

REMARKS:

THE PREPARATORY SURVEY ON ROAD IMPROVEMENT PLAN IN NACALA DEVELOPMENT CORRIDOR (N13: CUAMBA-MANDIMBA-LICHINGA)

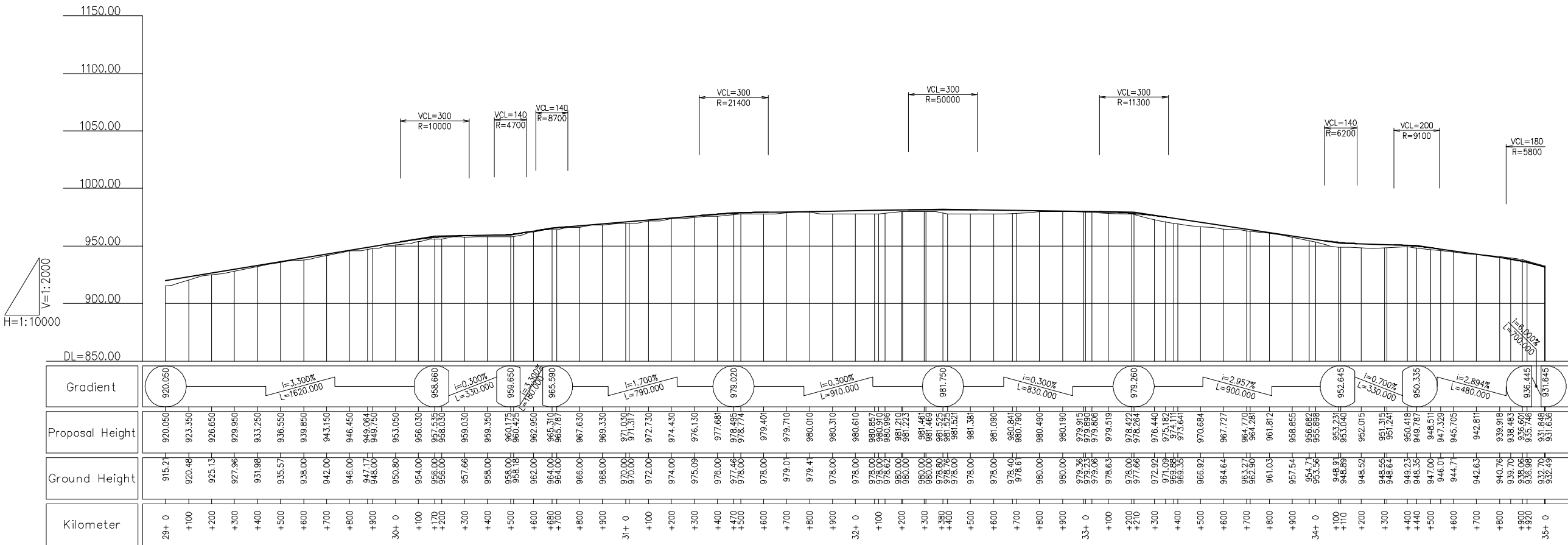
Eight-Japan Engineering Consultants Inc.
Oriental Consultants Co., Ltd

DRAWING TITLE

Plan and Profile (5)

	PREPARED BY	CHECKED BY	APPROVED BY
NAME			
SIGNATURE			
DATE			

SCALE	SHEET NO.	DRAWING NO.	REV. NO.
1/10,000		6	-



REMARKS:

THE PREPARATORY SURVEY ON ROAD IMPROVEMENT PLAN IN NACALA DEVELOPMENT CORRIDOR (N13: CUAMBA-MANDIMBA-LICHINGA)

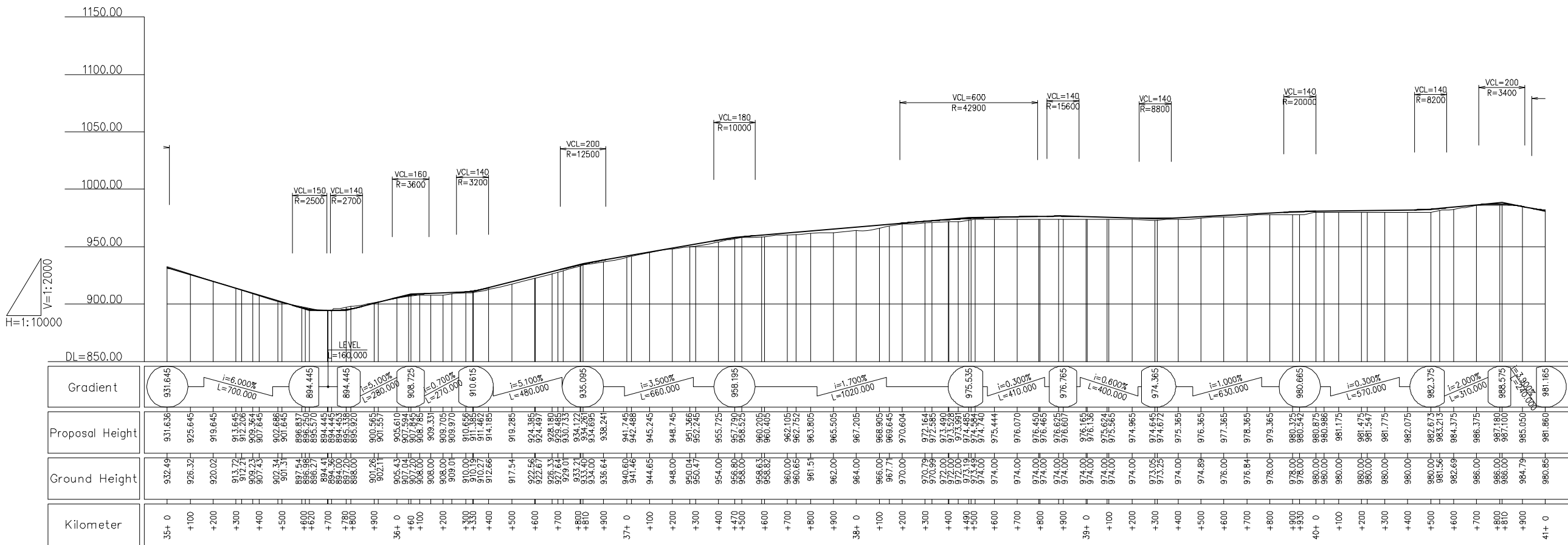
Eight-Japan Engineering Consultants Inc.
Oriental Consultants Co., Ltd

DRAWING TITLE

Plan and Profile (6)

	PREPARED BY	CHECKED BY	APPROVED BY
NAME			
SIGNATURE			
DATE			

SCALE	SHEET NO.	DRAWING NO.	REV. NO.
1/10,000	7	7	-



JICA JAPAN INTERNATIONAL COOPERATION AGENCY

ANE NATIONAL ROAD ADMINISTRATION

REMARKS:

THE PREPARATORY SURVEY ON ROAD IMPROVEMENT PLAN IN NACALA DEVELOPMENT CORRIDOR
(N13: CUAMBA-MANDIMBA-LICHINGA)

Eight-Japan Engineering Consultants Inc.
Oriental Consultants Co., Ltd

DRAWING TITLE

Plan and Profile (7)

	PREPARED BY	CHECKED BY	APPROVED BY
NAME			
SIGNATURE			
DATE			

SCALE	SHEET NO.	DRAWING NO.	REV. NO.
1/10,000		8	-

