

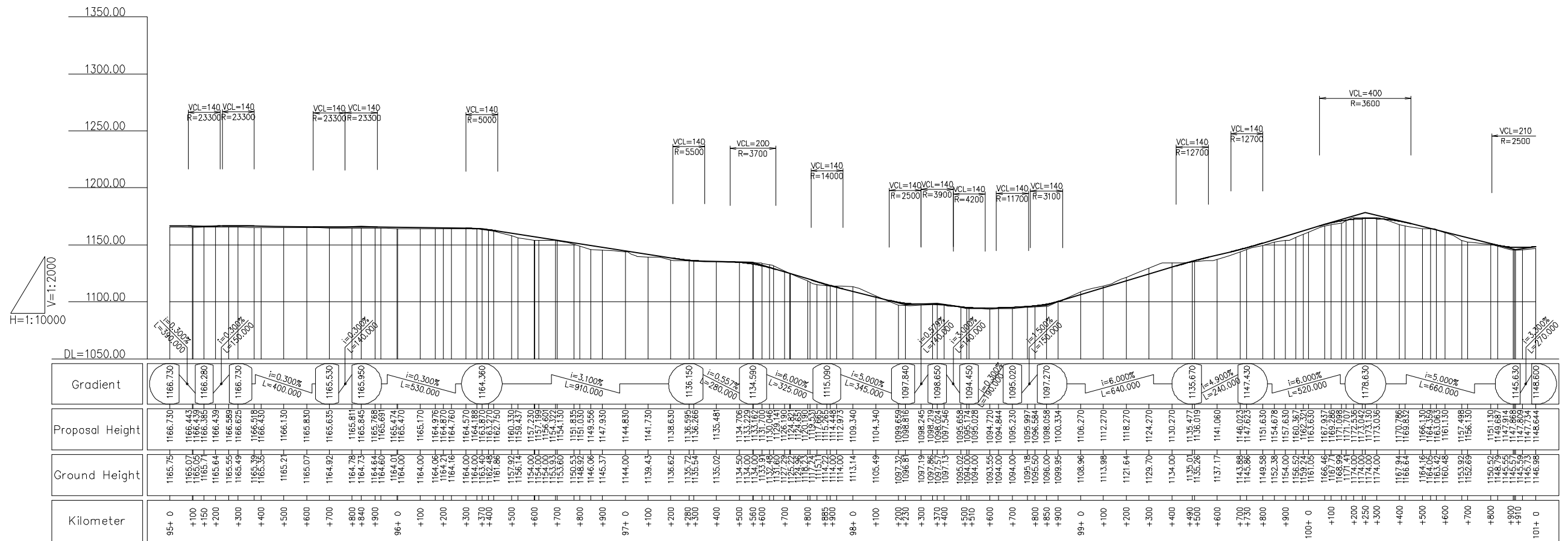
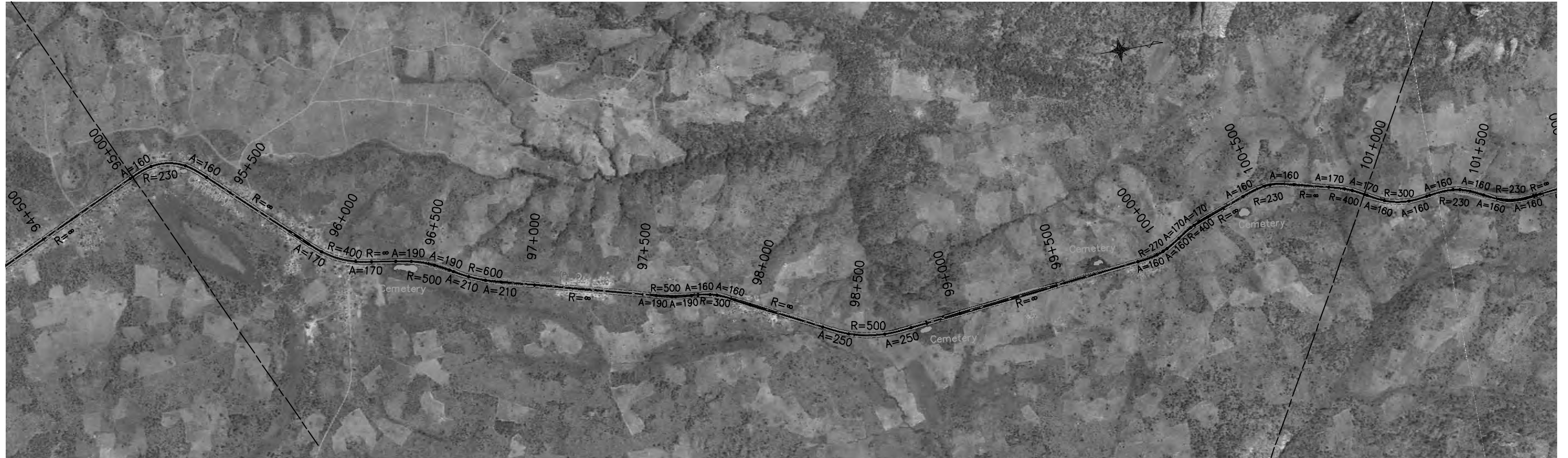
 JAPAN INTERNATIONAL COOPERATION AGENCY
 NATIONAL ROAD ADMINISTRATION

REMARKS:

THE PREPARATORY SURVEY ON ROAD IMPROVEMENT PLAN IN NACALA DEVELOPMENT CORRIDOR
 (N13: CUAMBA-MANDIMBA-LICHINGA)
 Eight-Japan Engineering Consultants Inc.
 Oriental Consultants Co., Ltd

PREPARED BY	CHECKED BY	APPROVED BY
NAME		
SIGNATURE		
DATE		

DRAWING TITLE: Plan and Profile (16)
 SCALE: 1/10,000
 SHEET NO.: 17
 DRAWING NO.: 17
 REV. NO.: -



REMARKS:

THE PREPARATORY SURVEY ON ROAD IMPROVEMENT PLAN IN NACALA DEVELOPMENT CORRIDOR
(N13: CUAMBA-MANDIMBA-LICHINGA)

Eight-Japan Engineering Consultants Inc.
Oriental Consultants Co., Ltd

DRAWING TITLE

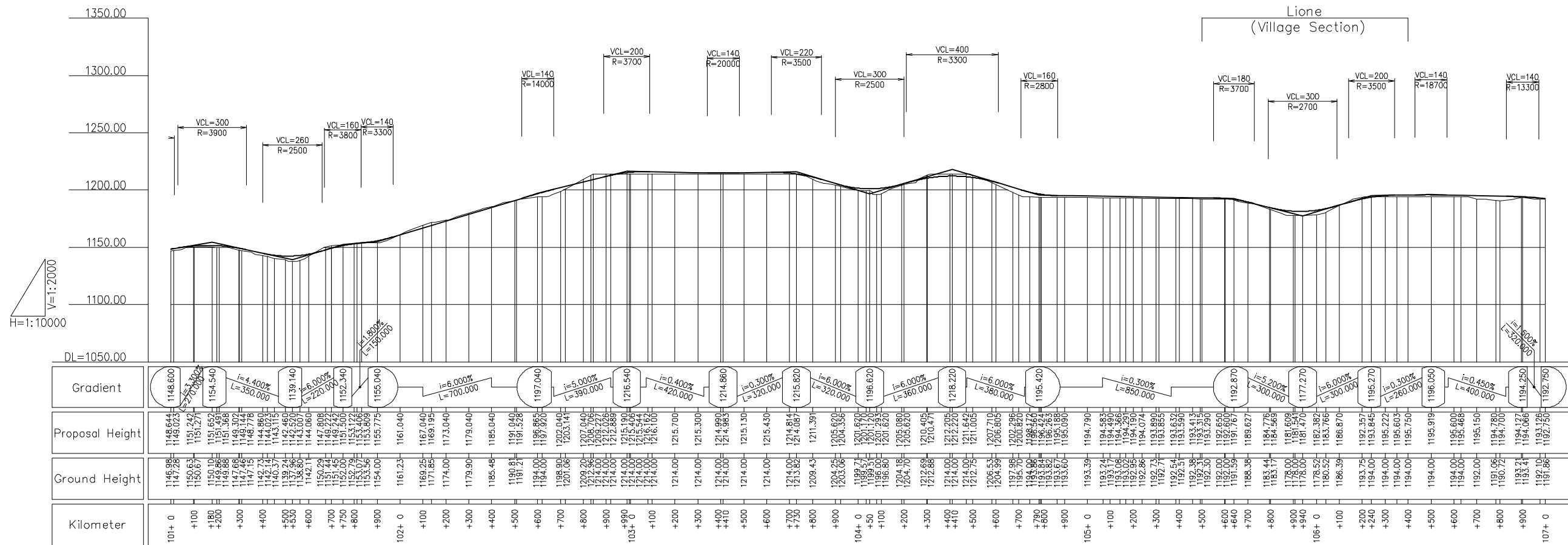
Plan and Profile (17)

	PREPARED BY	CHECKED BY	APPROVED BY
NAME			
SIGNATURE			
DATE			

SCALE	SHEET NO.	DRAWING NO.	REV. NO.
1/10,000		18	-

JICA JAPAN INTERNATIONAL COOPERATION AGENCY

ANE NATIONAL ROAD ADMINISTRATION

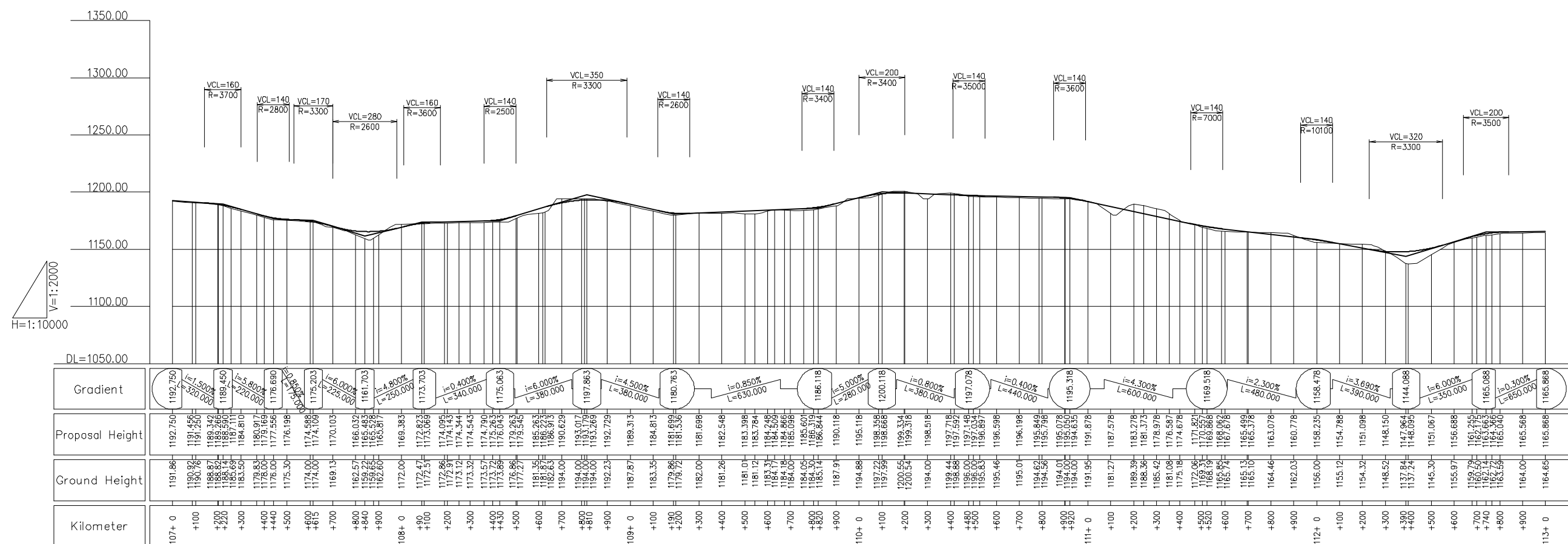
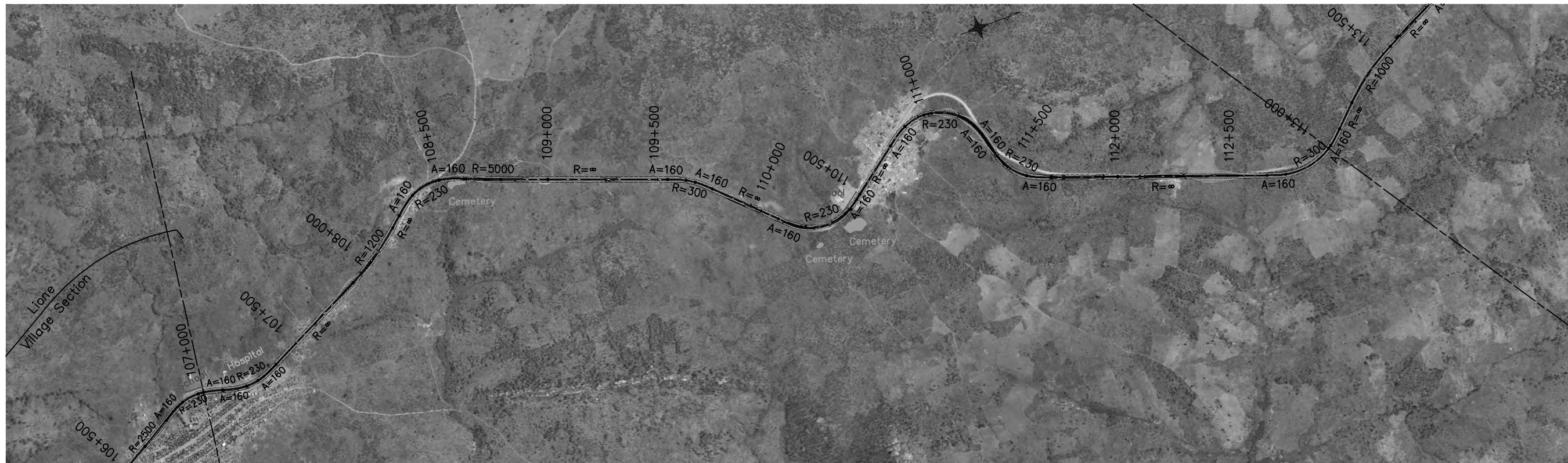


REMARKS:

THE PREPARATORY SURVEY ON ROAD IMPROVEMENT PLAN IN NACALA DEVELOPMENT CORRIDOR
(N13: CUAMBA-MANDIMBA-LICHINGA)

Eight-Japan Engineering Consultants Inc.
 Oriental Consultants Co., Ltd

DRAWING TITLE		
Plan and Profile (18)		
PREPARED BY	CHECKED BY	APPROVED BY
NAME		
SIGNATURE		
DATE		
SCALE	SHEET NO.	DRAWING NO.
1/10,000	19	
		REV. NO.
		-



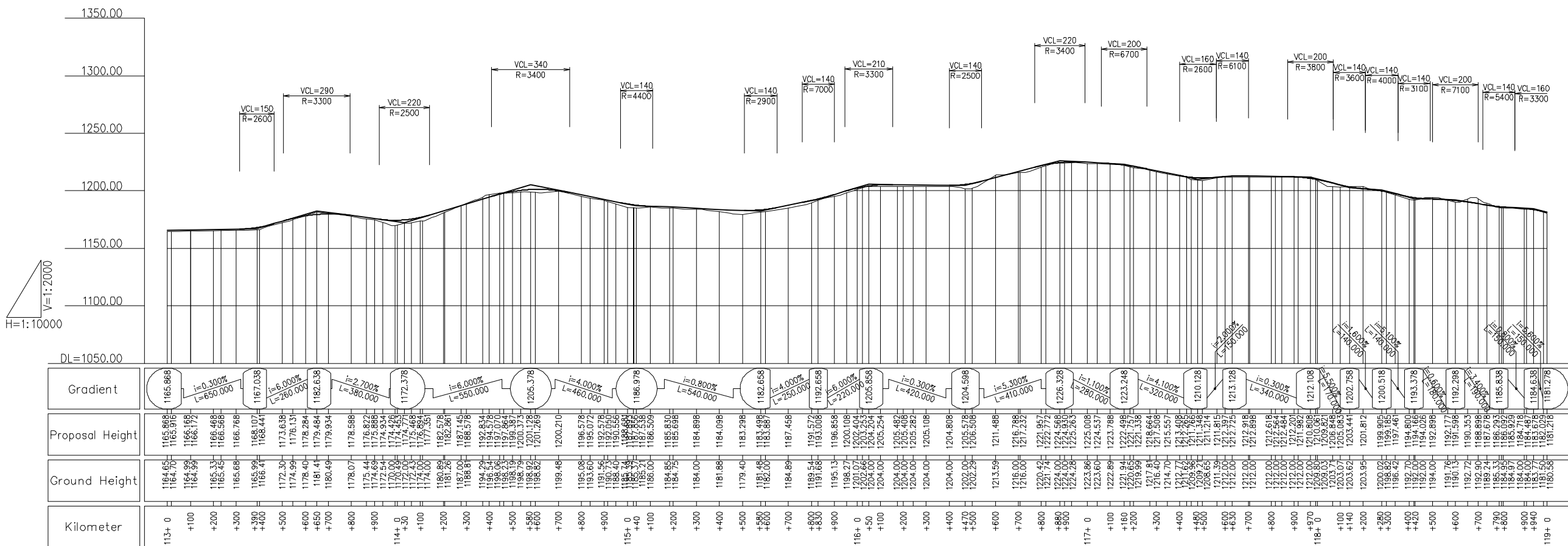

JAPAN INTERNATIONAL COOPERATION AGENCY

NATIONAL ROAD ADMINISTRATION

REMARKS:

THE PREPARATORY SURVEY ON ROAD IMPROVEMENT PLAN IN NACALA DEVELOPMENT CORRIDOR (N13: CUAMBA-MANDIMBA-LICHINGA)
 Eight-Japan Engineering Consultants Inc.
 Oriental Consultants Co., Ltd

DRAWING TITLE			Plan and Profile (19)		
PREPARED BY	CHECKED BY	APPROVED BY	SCALE	SHEET NO.	DRAWING NO.
NAME			1/10,000	20	20
SIGNATURE					REV. NO.
DATE					-



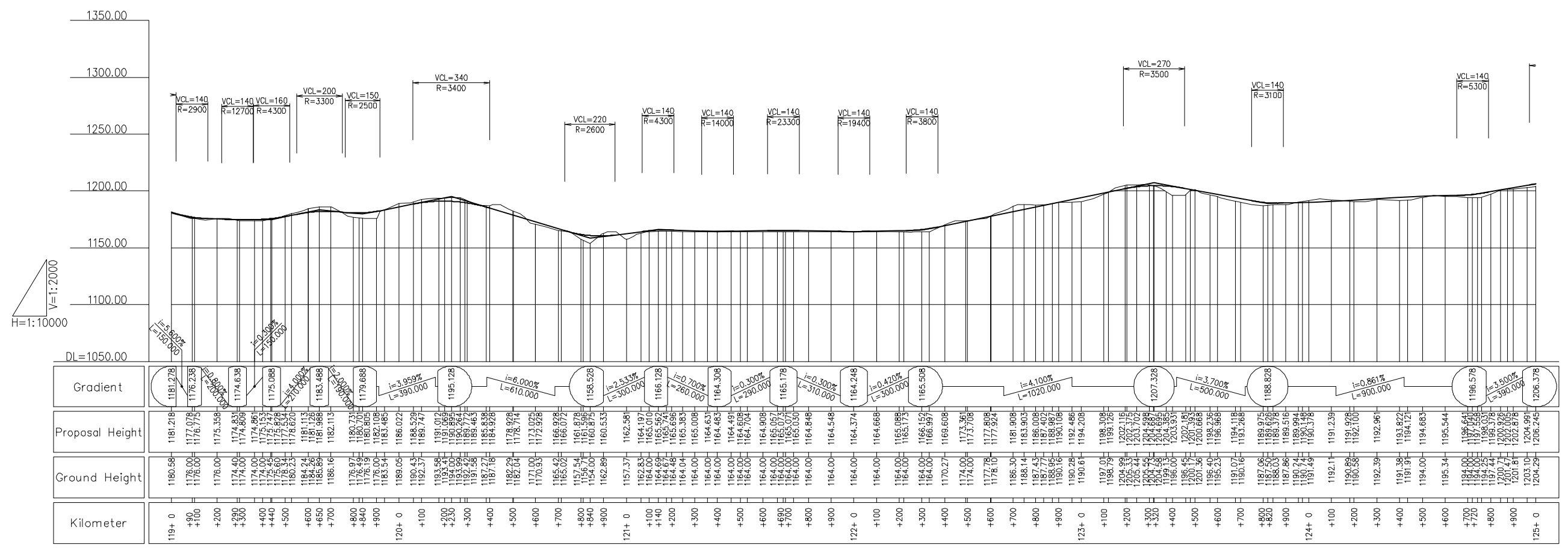
REMARKS:

THE PREPARATORY SURVEY ON ROAD IMPROVEMENT PLAN IN NACALA DEVELOPMENT CORRIDOR (N13: CUAMBA-MANDIMBA-LICHINGA)

Eight-Japan Engineering Consultants Inc.
Oriental Consultants Co., Ltd

DRAWING TITLE
Plan and Profile (20)

PREPARED BY	CHECKED BY	APPROVED BY	SCALE	SHEET NO.	DRAWING NO.	REV. NO.
NAME			1/10,000		21	-
SIGNATURE						
DATE						



DL=1050.00	$i=5.802\%$ $L=150.000$	$i=0.300\%$ $L=750.000$	$i=3.959\%$ $L=390.000$	$i=6.000\%$ $L=610.000$	$i=2.533\%$ $L=300.000$	$i=0.700\%$ $L=260.000$	$i=0.300\%$ $L=290.000$	$i=0.300\%$ $L=310.000$	$i=0.420\%$ $L=300.000$	$i=3.700\%$ $L=500.000$	$i=0.861\%$ $L=900.000$	$i=3.500\%$ $L=390.000$	$i=0.378\%$ $L=206.378$
Gradient	1181.278	1176.238	1174.831	1174.868	1174.868	1175.088	1175.088	1175.088	1175.088	1175.088	1175.088	1175.088	1175.088
Proposal Height	1181.218	1177.078	1176.775	1176.358	1174.831	1174.868	1174.868	1174.868	1174.868	1174.868	1174.868	1174.868	1174.868
Ground Height	1180.58	1176.00	1174.00	1174.00	1174.00	1174.00	1174.00	1174.00	1174.00	1174.00	1174.00	1174.00	1174.00
Kilometer	119+ 0	+90	+100	+200	+300	+400	+440	+500	+600	+650	+700	+800	+840

REMARKS:

THE PREPARATORY SURVEY ON ROAD IMPROVEMENT PLAN IN NACALA DEVELOPMENT CORRIDOR
 (N13: CUAMBA-MANDIMBA-LICHINGA)

Eight-Japan Engineering Consultants Inc.
 Oriental Consultants Co., Ltd

DRAWING TITLE

Plan and Profile (21)

PREPARED BY	CHECKED BY	APPROVED BY	SCALE	SHEET NO.	DRAWING NO.	REV. NO.
			1/10,000		22	-