

REMARKS:

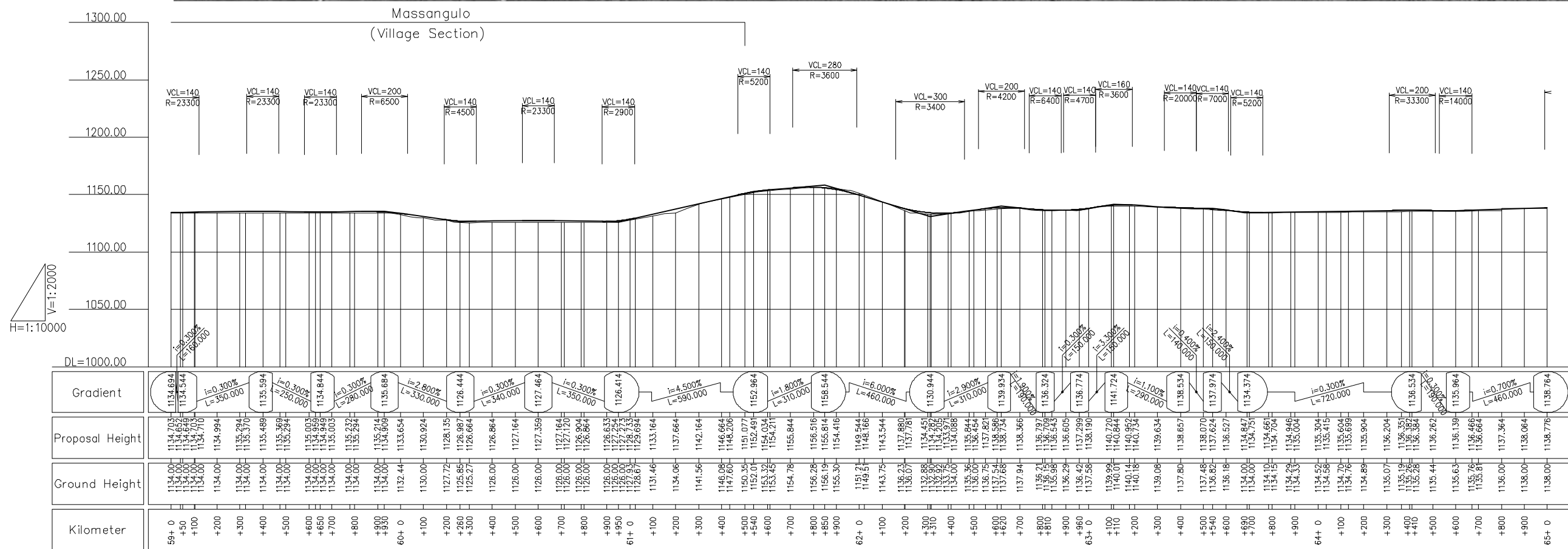
THE PREPARATORY SURVEY ON ROAD IMPROVEMENT PLAN IN NACALA DEVELOPMENT CORRIDOR
 (N13: CUAMBA-MANDIMBA-LICHINGA)

Eight-Japan Engineering Consultants Inc.
 Oriental Consultants Co., Ltd

DRAWING TITLE

Plan and Profile (10)

PREPARED BY	CHECKED BY	APPROVED BY	SCALE	SHEET NO.	DRAWING NO.	REV. NO.
			1/10,000		11	-



JICA JAPAN INTERNATIONAL COOPERATION AGENCY

ANE NATIONAL ROAD ADMINISTRATION

REMARKS:

THE PREPARATORY SURVEY ON ROAD IMPROVEMENT PLAN IN NACALA DEVELOPMENT CORRIDOR (N13: CUAMBA-MANDIMBA-LICHINGA)

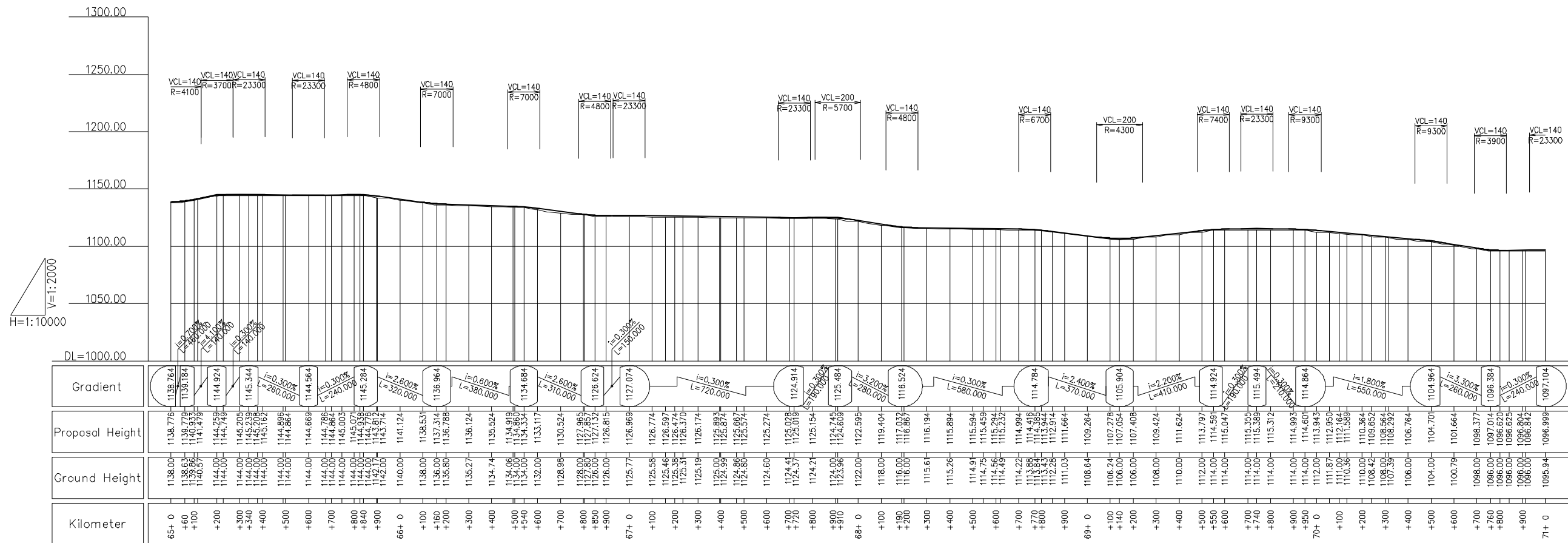
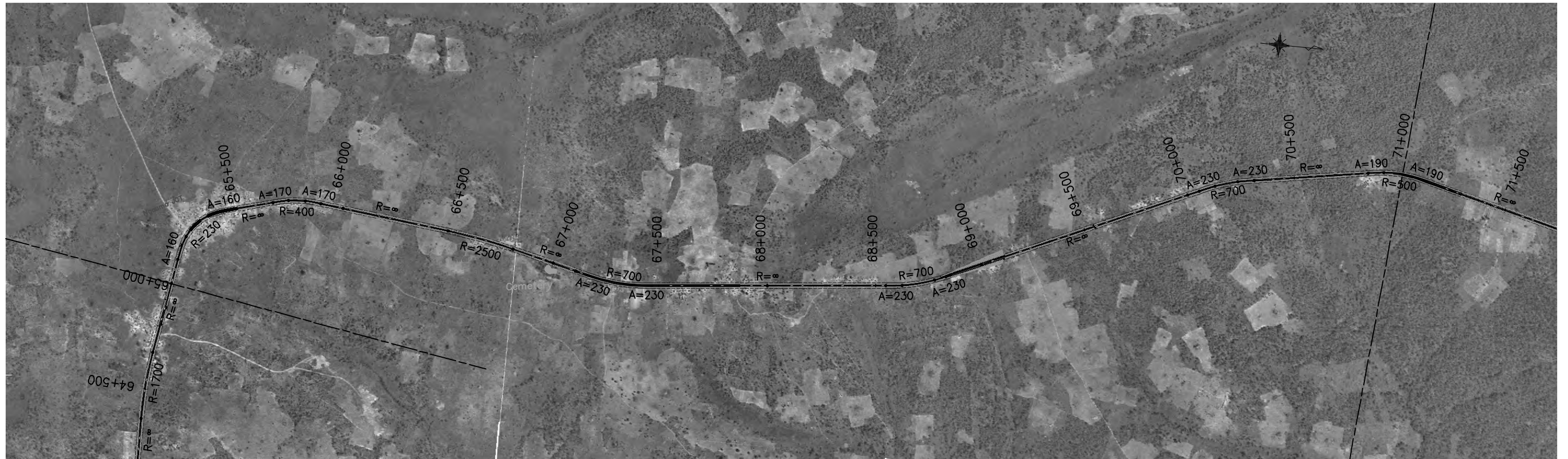
Eight-Japan Engineering Consultants Inc.
Oriental Consultants Co., Ltd

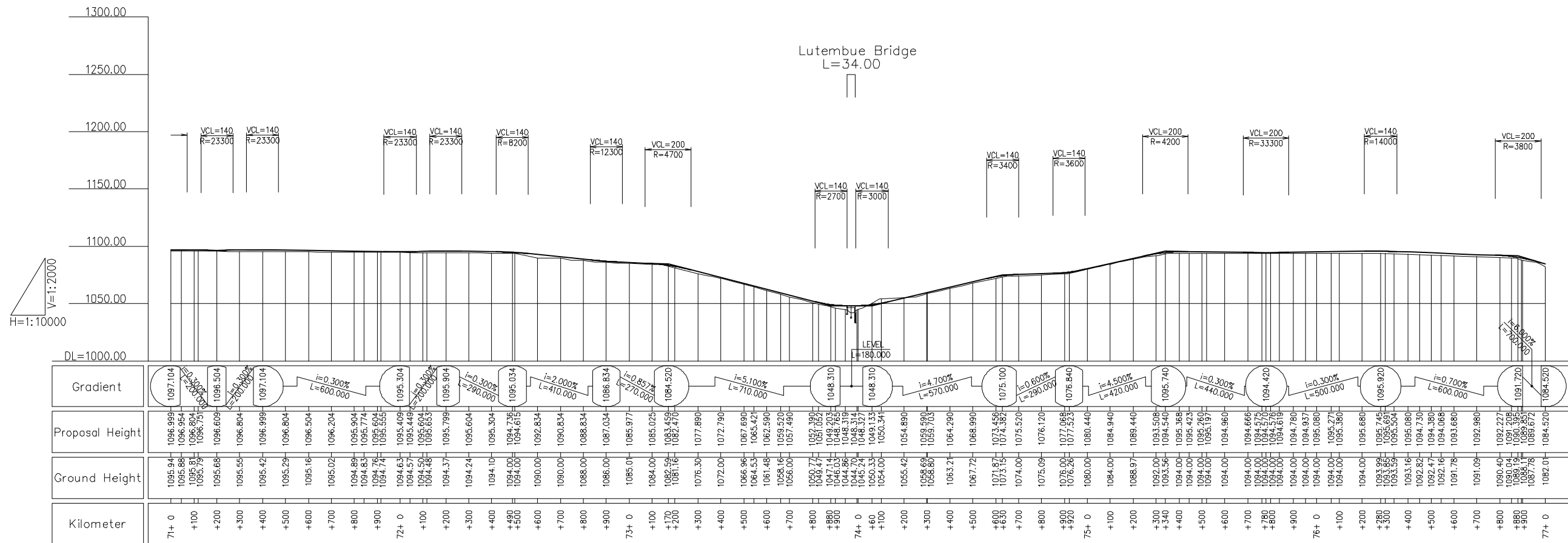
DRAWING TITLE

Plan and Profile (11)

PREPARED BY	CHECKED BY	APPROVED BY
NAME		
SIGNATURE		
DATE		

SCALE	SHEET NO.	DRAWING NO.	REV. NO.
1/10,000		12	-





JICA JAPAN INTERNATIONAL COOPERATION AGENCY

ANR NATIONAL ROAD ADMINISTRATION

REMARKS:

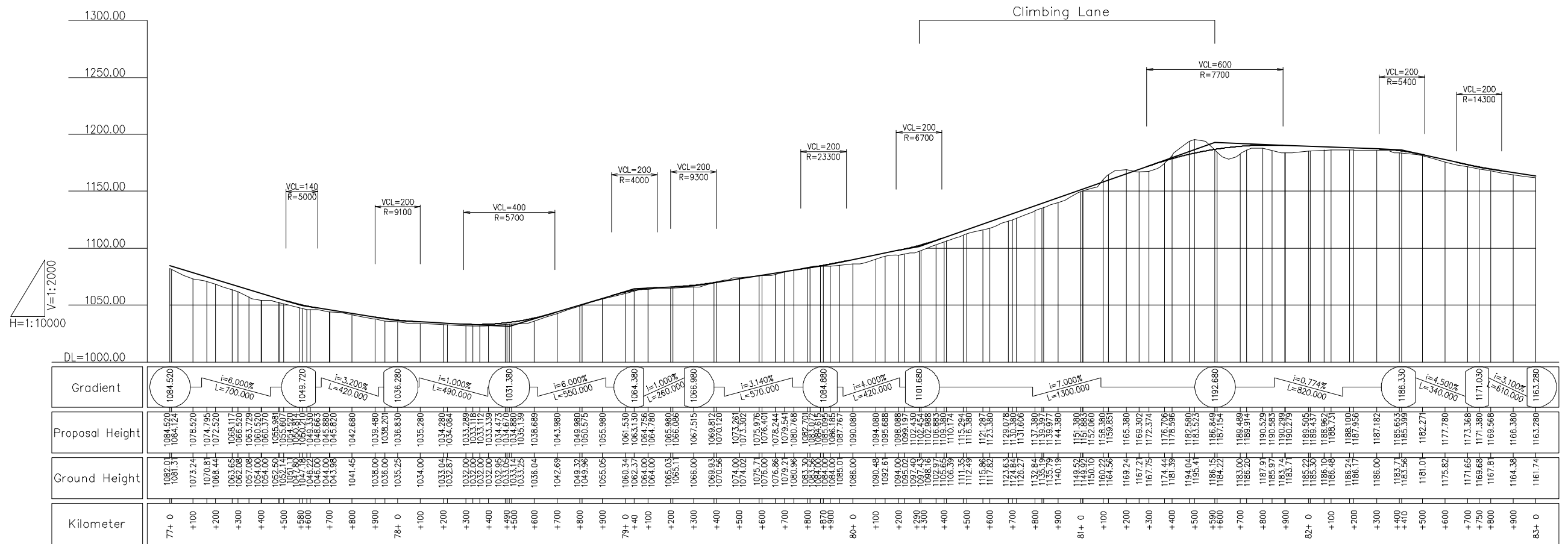
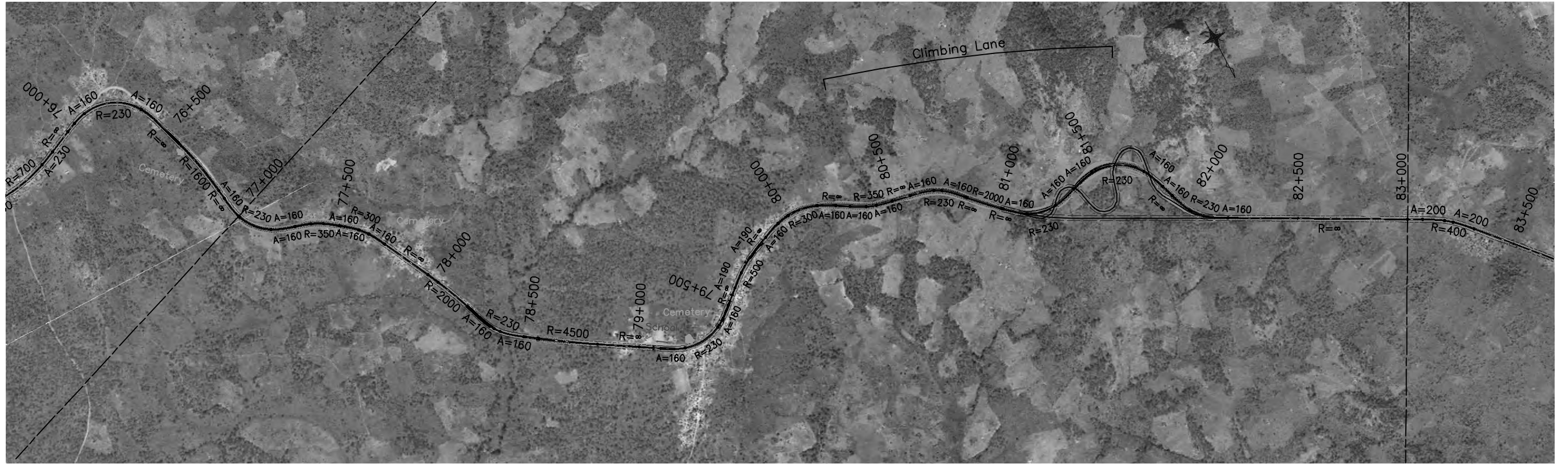
THE PREPARATORY SURVEY ON ROAD IMPROVEMENT PLAN IN NACALA DEVELOPMENT CORRIDOR (N13: CUAMBA-MANDIMBA-LICHINGA)

Eight-Japan Engineering Consultants Inc.
Oriental Consultants Co., Ltd

DRAWING TITLE
Plan and Profile (13)

NAME	PREPARED BY	CHECKED BY	APPROVED BY
SIGNATURE			
DATE			

SCALE	SHEET NO.	DRAWING NO.	REV. NO.
1/10,000		14	-






 JAPAN INTERNATIONAL COOPERATION AGENCY

 NATIONAL ROAD ADMINISTRATION

REMARKS:

THE PREPARATORY SURVEY ON ROAD IMPROVEMENT PLAN IN NACALA DEVELOPMENT CORRIDOR (N13: CUAMBA-MANDIMBA-LICHINGA)


 Eight-Japan Engineering Consultants Inc.

 Oriental Consultants Co., Ltd

PREPARED BY	CHECKED BY	APPROVED BY
NAME	NAME	NAME
SIGNATURE	SIGNATURE	SIGNATURE
DATE	DATE	DATE

DRAWING TITLE

Plan and Profile (14)

SCALE	SHEET NO.	DRAWING NO.	REV. NO.
1/10,000		15	-

