

**NATIONAL ROAD ADMINISTRATION
REPUBLIC OF MOZAMBIQUE**

**THE PREPARATORY STUDY
ON
ROAD IMPROVEMENT PLAN
IN NACALA DEVELOPMENT CORRIDOR
(N13: CUAMBA-MANDIMBA-LICHINGA)
IN
THE REPUBLIC OF MOZAMBIQUE**

**FINAL REPORT
3 of 3
Drawings**

Mandimba-Lichinga Section

February 2010

JAPAN INTERNATIONAL COOPERATION AGENCY

Eight - Japan Engineering Consultants Inc.

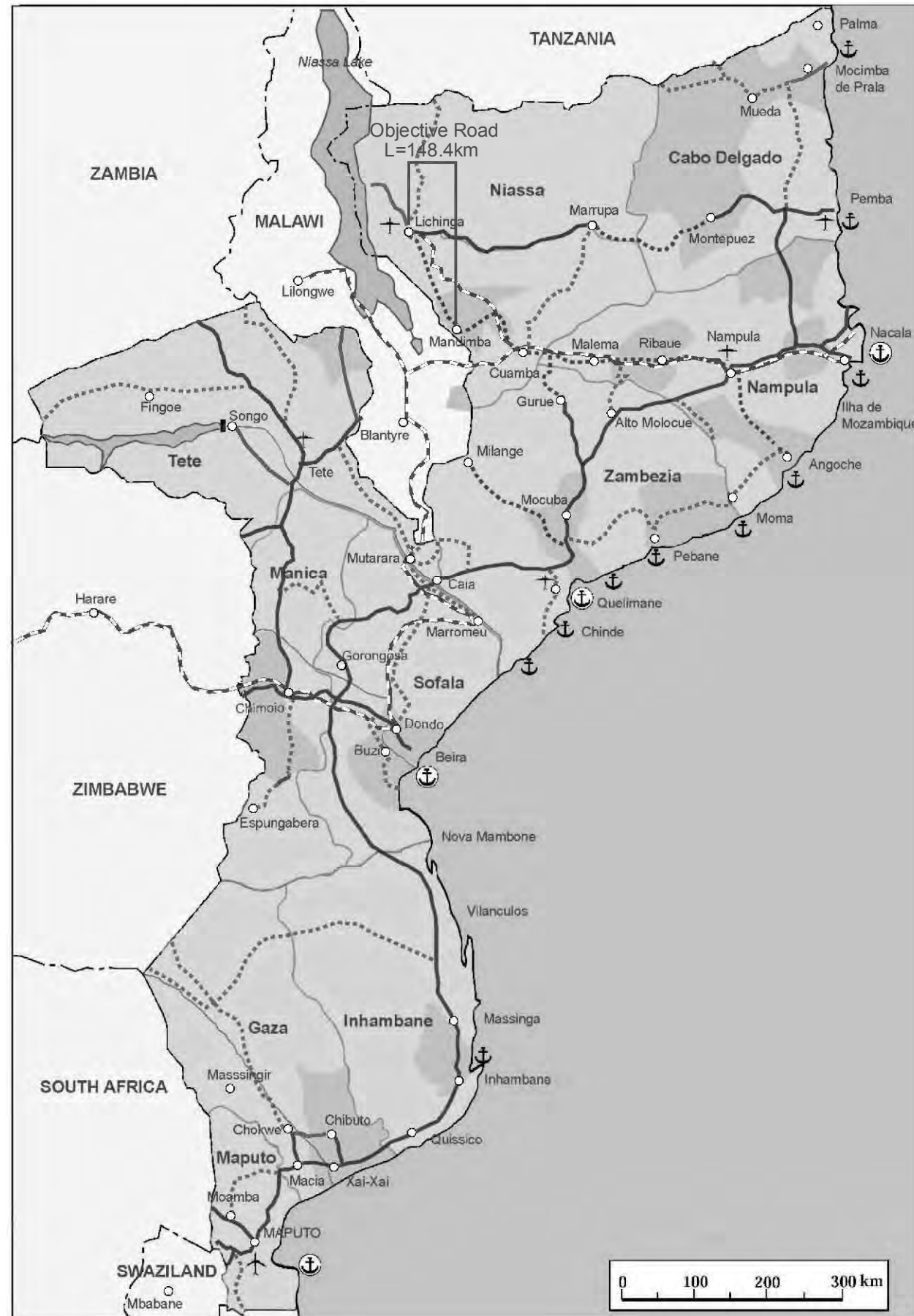
Oriental Consultants Co., Ltd.

Location Map

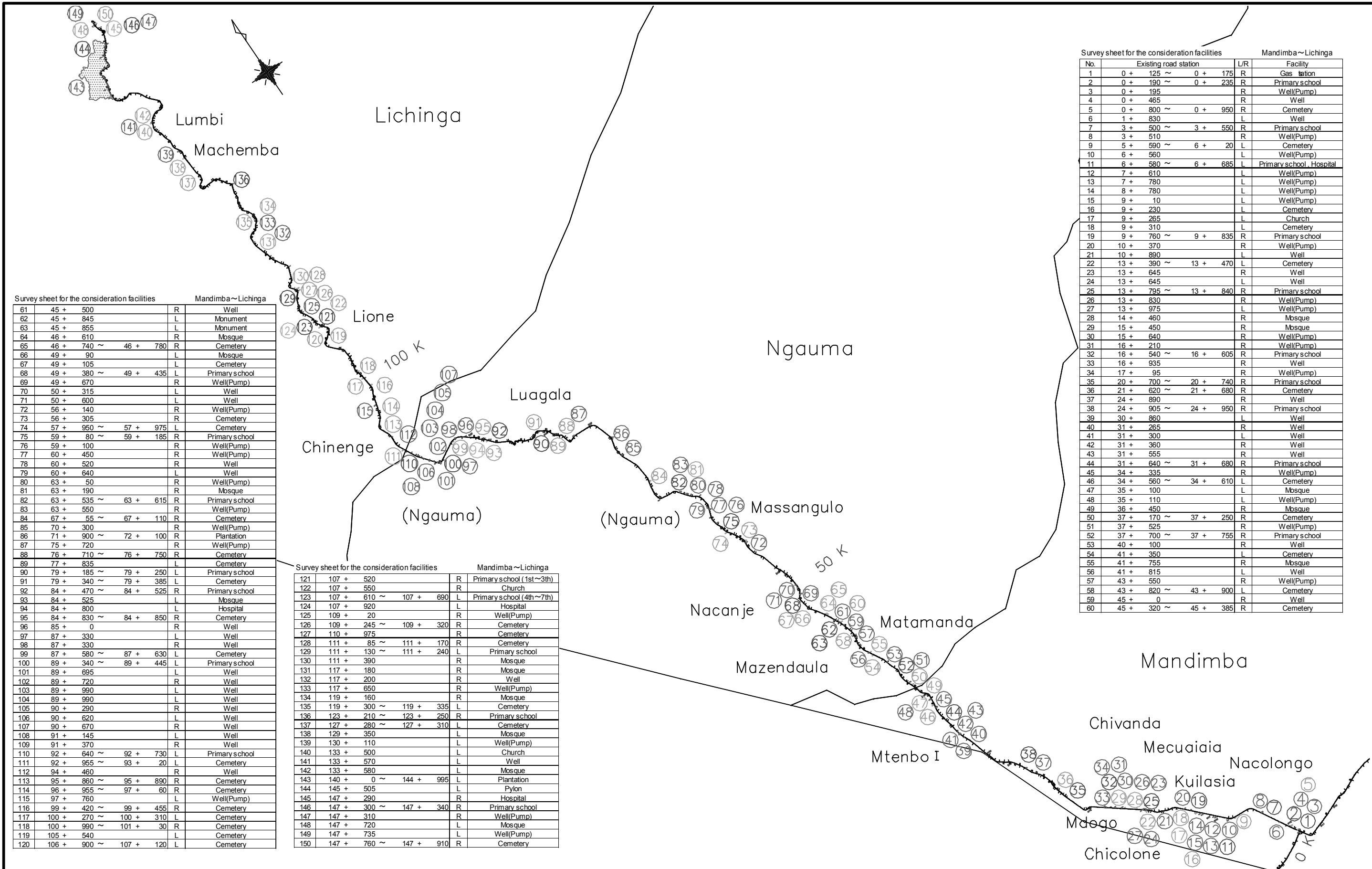
Table of Contents

Drawing Title

No.



1. Location Map of the Consideration Facilities	1
2. Plan and Profile	2~26
3. Typical Cross Section	27~29
4. General View of the Bridge	30~35
5. Box Culvert Structural Details	36~45
6. Pipe Culvert Structural Details	46~49
7. Drainage Details	50
8. Ancillary Work	51
9. Guardrail Placing Details	52
10. Traffic Signs	53
11. Traffic Marking	54~55



Survey sheet for the consideration facilities Mandimba~Lichinga

No.	Existing road station	L/R	Facility
61	45 + 500	R	Well
62	45 + 845	L	Monument
63	45 + 855	L	Monument
64	46 + 610	R	Mosque
65	46 + 740 ~ 46 + 780	R	Cemetery
66	49 + 90	L	Mosque
67	49 + 105	L	Cemetery
68	49 + 380 ~ 49 + 435	L	Primary school
69	49 + 670	R	Well(Pump)
70	50 + 315	L	Well
71	50 + 600	L	Well
72	56 + 140	R	Well(Pump)
73	56 + 305	R	Cemetery
74	57 + 950 ~ 57 + 975	L	Cemetery
75	59 + 80 ~ 59 + 185	R	Primary school
76	59 + 100	R	Well(Pump)
77	60 + 450	R	Well(Pump)
78	60 + 520	R	Well
79	60 + 640	L	Well
80	63 + 50	R	Well(Pump)
81	63 + 190	R	Mosque
82	63 + 535 ~ 63 + 615	R	Primary school
83	63 + 550	R	Well(Pump)
84	67 + 55 ~ 67 + 110	R	Cemetery
85	70 + 300	R	Well(Pump)
86	71 + 900 ~ 72 + 100	R	Plantation
87	75 + 720	R	Well(Pump)
88	76 + 710 ~ 76 + 750	R	Cemetery
89	77 + 835	L	Cemetery
90	79 + 185 ~ 79 + 250	L	Primary school
91	79 + 340 ~ 79 + 385	L	Cemetery
92	84 + 470 ~ 84 + 525	R	Primary school
93	84 + 525	L	Mosque
94	84 + 800	L	Hospital
95	84 + 830 ~ 84 + 850	R	Cemetery
96	85 + 0	R	Well
97	87 + 330	L	Well
98	87 + 330	R	Well
99	87 + 580 ~ 87 + 630	L	Cemetery
100	89 + 340 ~ 89 + 445	L	Primary school
101	89 + 695	L	Well
102	89 + 720	R	Well
103	89 + 990	L	Well
104	89 + 990	L	Well
105	90 + 290	R	Well
106	90 + 620	L	Well
107	90 + 670	R	Well
108	91 + 145	L	Well
109	91 + 370	R	Well
110	92 + 640 ~ 92 + 730	L	Primary school
111	92 + 955 ~ 93 + 20	L	Cemetery
112	94 + 460	R	Well
113	95 + 860 ~ 95 + 890	R	Cemetery
114	96 + 955 ~ 97 + 60	R	Cemetery
115	97 + 760	L	Well(Pump)
116	99 + 420 ~ 99 + 455	R	Cemetery
117	100 + 270 ~ 100 + 310	L	Cemetery
118	100 + 990 ~ 101 + 30	R	Cemetery
119	105 + 540	L	Cemetery
120	106 + 900 ~ 107 + 120	L	Cemetery

Survey sheet for the consideration facilities Mandimba~Lichinga

No.	Existing road station	L/R	Facility
121	107 + 520	R	Primary school (1st~3th)
122	107 + 550	R	Church
123	107 + 610 ~ 107 + 690	L	Primary school (4th~7th)
124	107 + 920	L	Hospital
125	109 + 20	R	Well(Pump)
126	109 + 245 ~ 109 + 320	R	Cemetery
127	110 + 975	R	Cemetery
128	111 + 85 ~ 111 + 170	R	Cemetery
129	111 + 130 ~ 111 + 240	L	Primary school
130	111 + 390	R	Mosque
131	117 + 180	R	Mosque
132	117 + 200	R	Well
133	117 + 650	R	Well(Pump)
134	119 + 160	R	Mosque
135	119 + 300 ~ 119 + 335	L	Cemetery
136	123 + 210 ~ 123 + 250	R	Primary school
137	127 + 280 ~ 127 + 310	L	Cemetery
138	129 + 350	L	Mosque
139	130 + 110	L	Well(Pump)
140	133 + 500	L	Church
141	133 + 570	L	Well
142	133 + 580	L	Mosque
143	140 + 0 ~ 144 + 995	L	Plantation
144	145 + 505	L	Pylon
145	147 + 290	R	Hospital
146	147 + 300 ~ 147 + 340	R	Primary school
147	147 + 310	R	Well(Pump)
148	147 + 720	L	Mosque
149	147 + 735	L	Well(Pump)
150	147 + 760 ~ 147 + 910	R	Cemetery

Survey sheet for the consideration facilities Mandimba~Lichinga

No.	Existing road station	L/R	Facility
1	0 + 125 ~ 0 + 175	R	Gas station
2	0 + 190 ~ 0 + 235	R	Primary school
3	0 + 195	R	Well(Pump)
4	0 + 465	R	Well
5	0 + 800 ~ 0 + 950	R	Cemetery
6	1 + 830	L	Well
7	3 + 500 ~ 3 + 550	R	Primary school
8	3 + 510	R	Well(Pump)
9	5 + 590 ~ 6 + 20	L	Cemetery
10	6 + 560	L	Well(Pump)
11	6 + 580 ~ 6 + 685	L	Primary school, Hospital
12	7 + 610	L	Well(Pump)
13	7 + 780	L	Well(Pump)
14	8 + 780	L	Well(Pump)
15	9 + 10	L	Well(Pump)
16	9 + 230	L	Cemetery
17	9 + 265	L	Church
18	9 + 310	L	Cemetery
19	9 + 760 ~ 9 + 835	R	Primary school
20	10 + 370	R	Well(Pump)
21	10 + 890	L	Well
22	13 + 390 ~ 13 + 470	L	Cemetery
23	13 + 645	R	Well
24	13 + 645	L	Well
25	13 + 795 ~ 13 + 840	R	Primary school
26	13 + 830	R	Well(Pump)
27	13 + 975	L	Well(Pump)
28	14 + 460	R	Mosque
29	15 + 450	R	Mosque
30	15 + 640	R	Well(Pump)
31	16 + 210	R	Well(Pump)
32	16 + 540 ~ 16 + 605	R	Primary school
33	16 + 935	R	Well
34	17 + 95	R	Well(Pump)
35	20 + 700 ~ 20 + 740	R	Primary school
36	21 + 620 ~ 21 + 680	R	Cemetery
37	24 + 890	R	Well
38	24 + 905 ~ 24 + 950	R	Primary school
39	30 + 860	L	Well
40	31 + 265	R	Well
41	31 + 300	L	Well
42	31 + 360	R	Well
43	31 + 555	R	Well
44	31 + 640 ~ 31 + 680	R	Primary school
45	34 + 335	R	Well(Pump)
46	34 + 560 ~ 34 + 610	L	Cemetery
47	35 + 100	L	Mosque
48	35 + 110	L	Well(Pump)
49	36 + 450	R	Mosque
50	37 + 170 ~ 37 + 250	R	Cemetery
51	37 + 525	R	Well(Pump)
52	37 + 700 ~ 37 + 755	R	Primary school
53	40 + 100	R	Well
54	41 + 350	L	Cemetery
55	41 + 755	R	Mosque
56	41 + 815	L	Well
57	43 + 550	R	Well(Pump)
58	43 + 820 ~ 43 + 900	L	Cemetery
59	45 + 0	R	Well
60	45 + 320 ~ 45 + 385	R	Cemetery

JICA JAPAN INTERNATIONAL COOPERATION AGENCY

ANE NATIONAL ROAD ADMINISTRATION

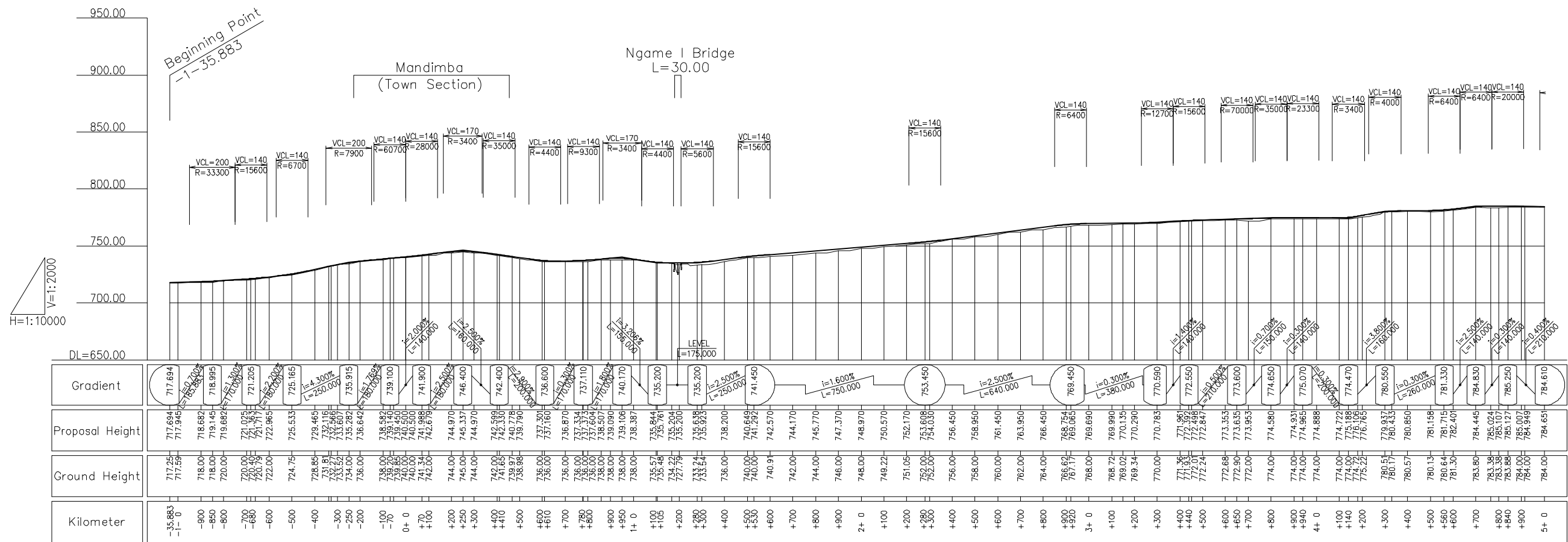
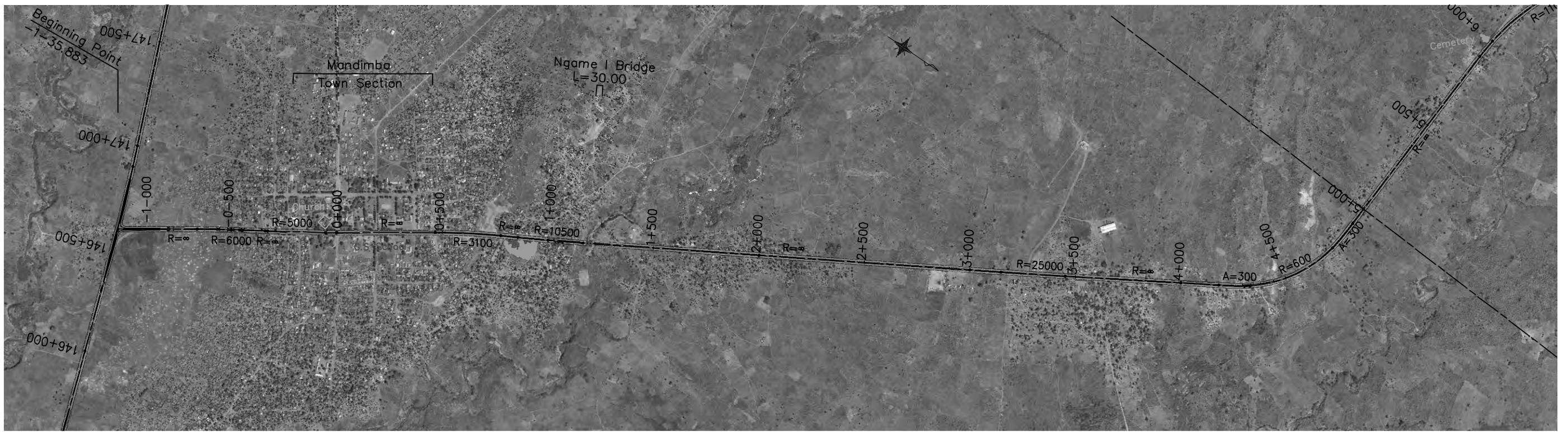
REMARKS:

THE PREPARATORY SURVEY ON ROAD IMPROVEMENT PLAN IN NACALA DEVELOPMENT CORRIDOR (N13: CUAMBA-MANDIMBA-LICHINGA)

Eight-Japan Engineering Consultants Inc.
Oriental Consultants Co., Ltd

DRAWING TITLE
Location Map of the Consideration Facilities

PREPARED BY	CHECKED BY	APPROVED BY	SCALE	SHEET NO.	DRAWING NO.	REV. NO.
NAME			1/150,000		1	-
SIGNATURE						
DATE						



JICA JAPAN INTERNATIONAL COOPERATION AGENCY

ANR NATIONAL ROAD ADMINISTRATION

REMARKS:

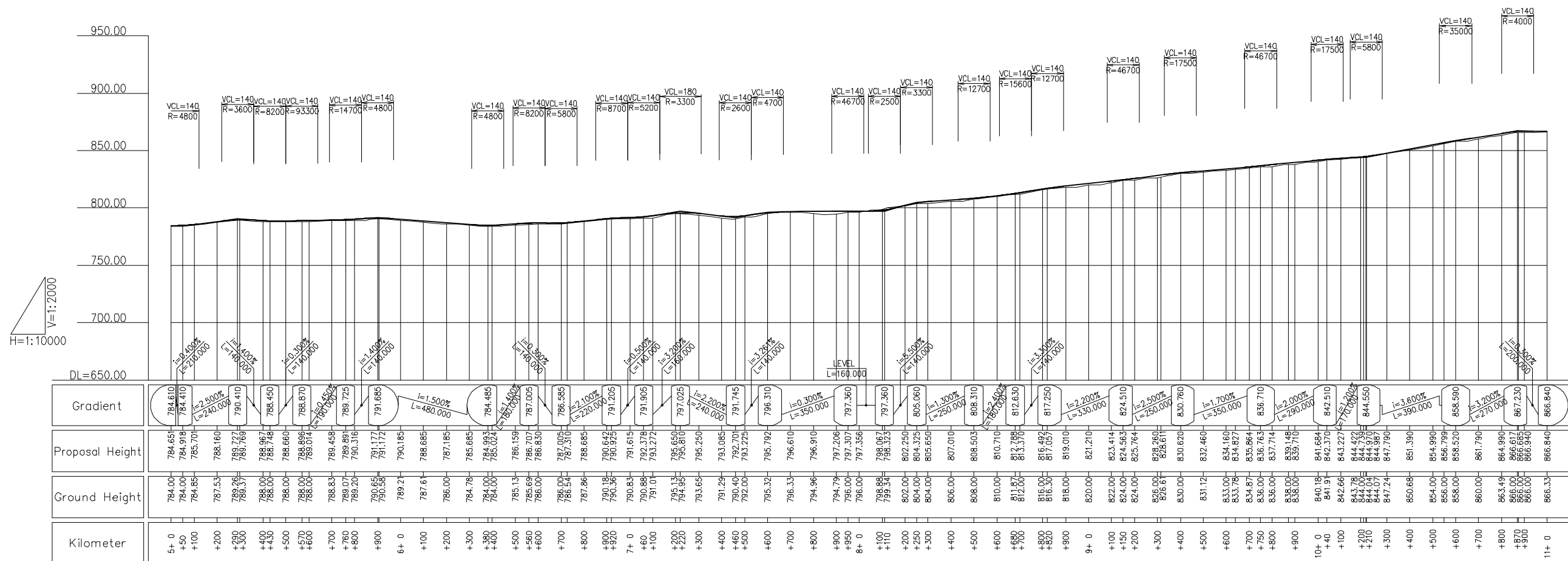
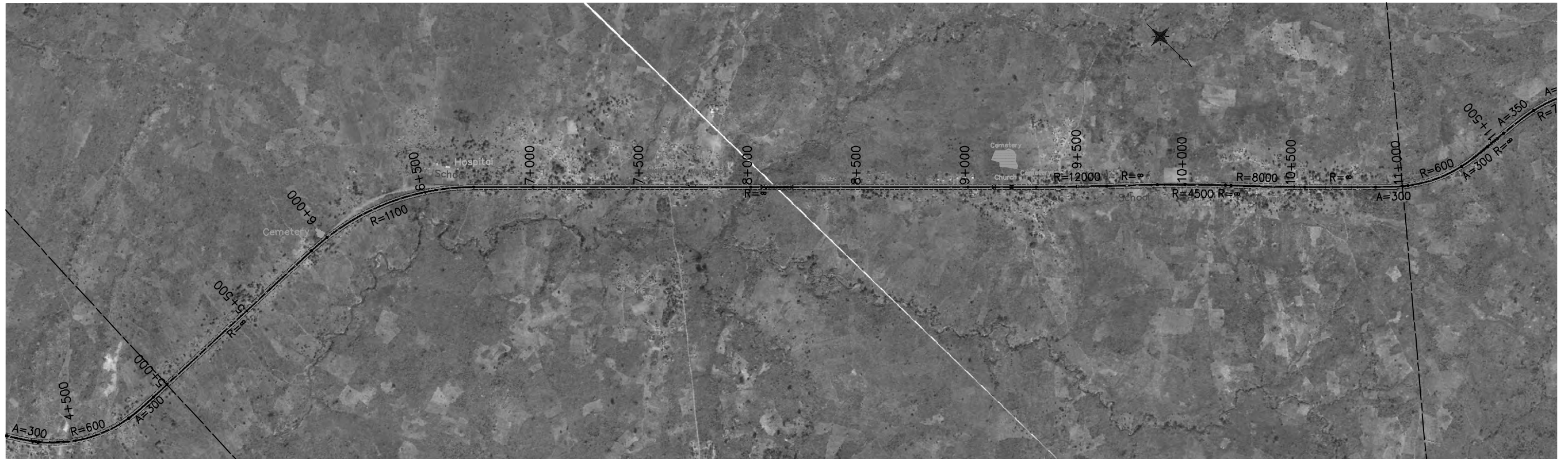
THE PREPARATORY SURVEY ON ROAD IMPROVEMENT PLAN IN NACALA DEVELOPMENT CORRIDOR (N13: CUAMBA-MANDIMBA-LICHINGA)

Eight-Japan Engineering Consultants Inc.
Oriental Consultants Co., Ltd

DRAWING TITLE: **Plan and Profile (1)**

PREPARED BY	CHECKED BY	APPROVED BY
NAME		
SIGNATURE		
DATE		

SCALE	SHEET NO.	DRAWING NO.	REV. NO.
1/10,000		2	-



JICA JAPAN INTERNATIONAL COOPERATION AGENCY

NAE NATIONAL ROAD ADMINISTRATION

REMARKS:

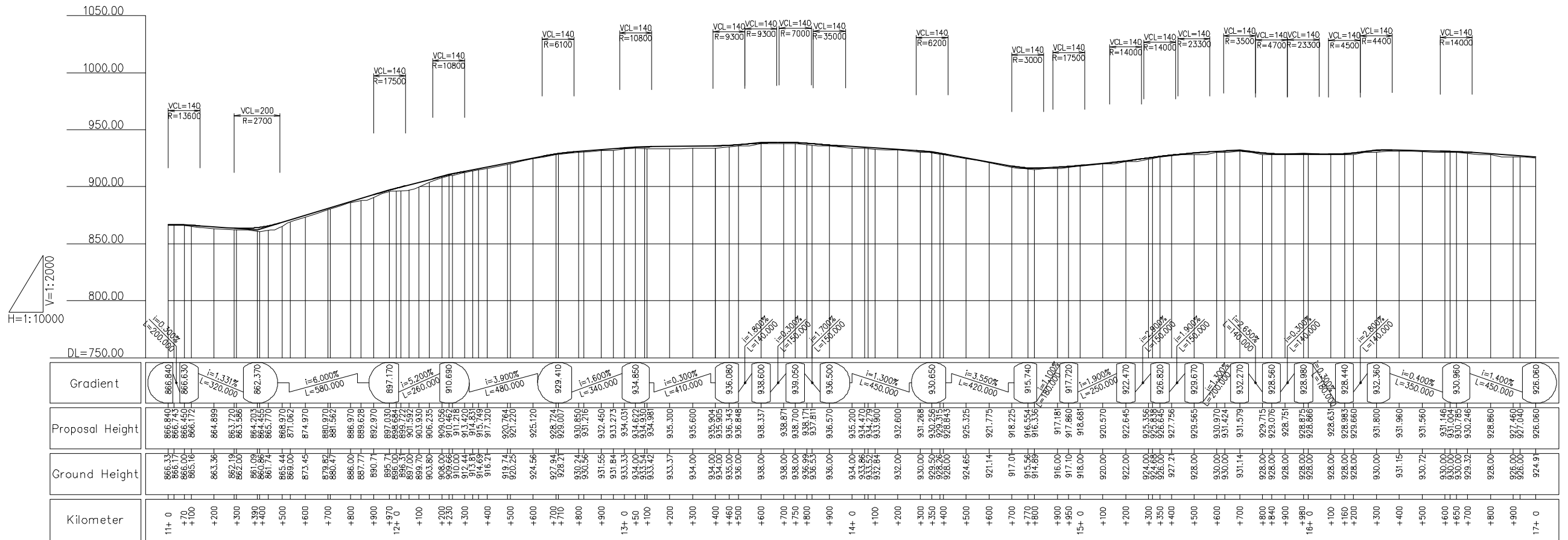
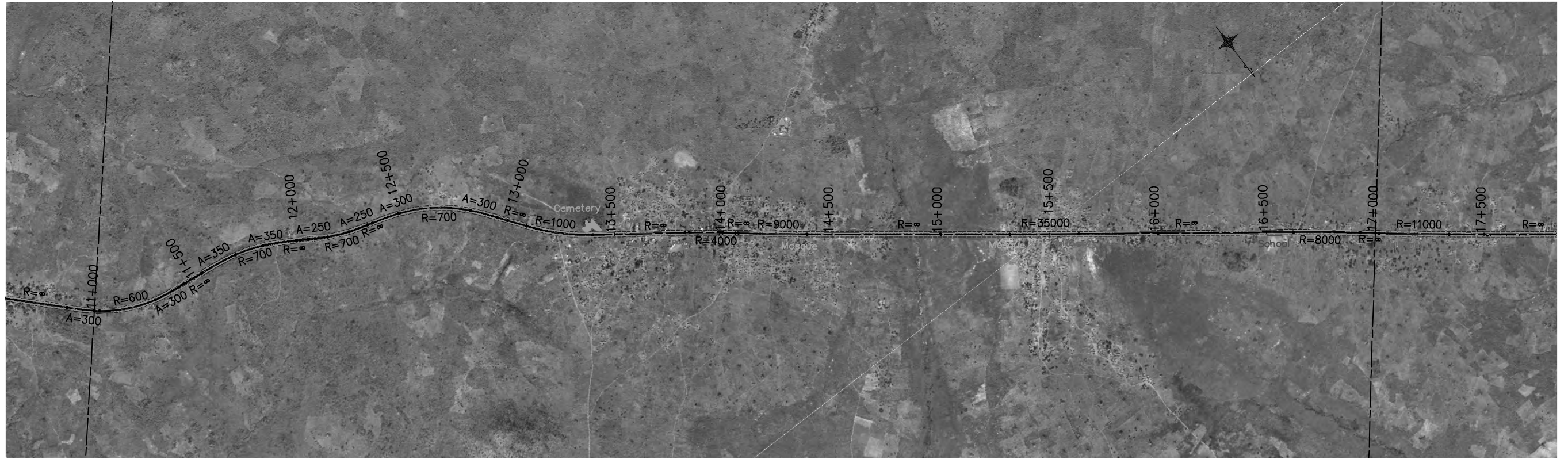
THE PREPARATORY SURVEY ON ROAD IMPROVEMENT PLAN IN NACALA DEVELOPMENT CORRIDOR (N13: CUAMBA-MANDIMBA-LICHINGA)

Eight-Japan Engineering Consultants Inc.
Oriental Consultants Co., Ltd

DRAWING TITLE
Plan and Profile (2)

PREPARED BY	CHECKED BY	APPROVED BY
NAME		
SIGNATURE		
DATE		

SCALE	SHEET NO.	DRAWING NO.	REV. NO.
1/10,000		3	-



JICA JAPAN INTERNATIONAL COOPERATION AGENCY
 ANE NATIONAL ROAD ADMINISTRATION

REMARKS:

THE PREPARATORY SURVEY ON ROAD IMPROVEMENT PLAN IN NACALA DEVELOPMENT CORRIDOR (N13: CUAMBA-MANDIMBA-LICHINGA)

Eight-Japan Engineering Consultants Inc.
 Oriental Consultants Co., Ltd

DRAWING TITLE
 Plan and Profile (3)

PREPARED BY	CHECKED BY	APPROVED BY	SCALE	SHEET NO.	DRAWING NO.	REV. NO.
NAME			1/10,000		4	-
SIGNATURE						
DATE						