

JAPAN INTERNATIONAL COOPERATION AGENCY  
 NATIONAL ROAD ADMINISTRATION

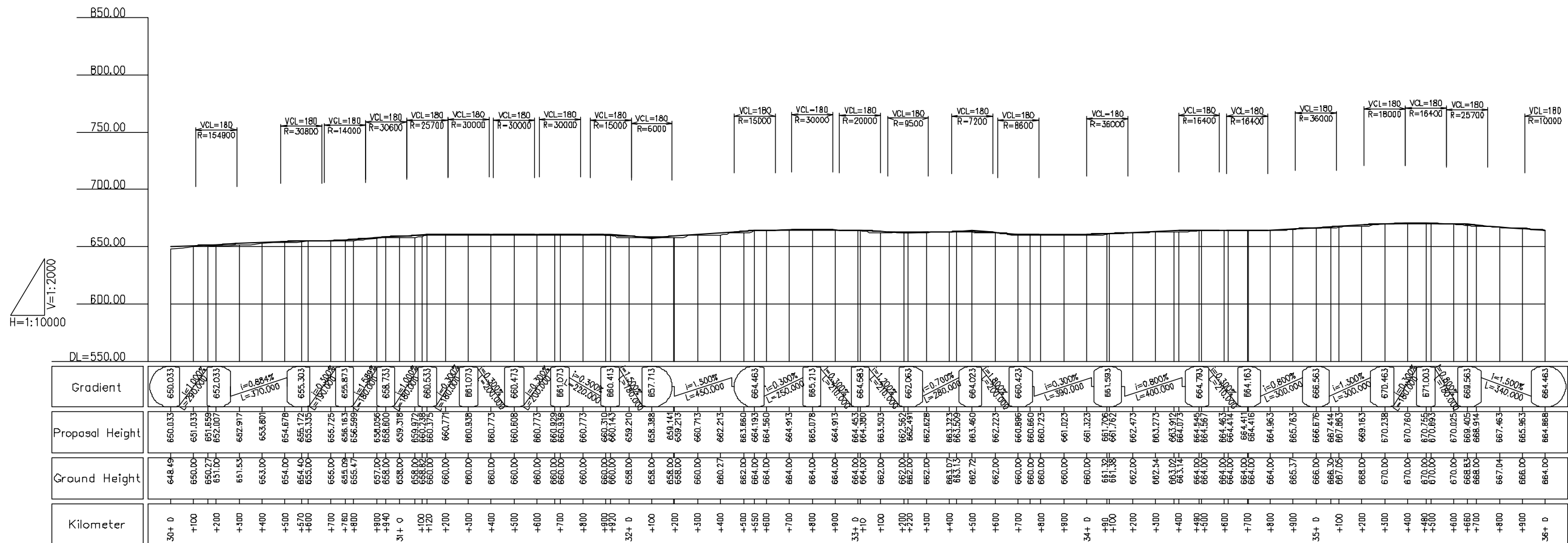
REMARKS:

THE PREPARATORY SURVEY ON ROAD IMPROVEMENT PLAN IN NACALA DEVELOPMENT CORRIDOR  
 (N13: CUAMBA-MANDIMBA-LICHINGA)  
 Eight-Japan Engineering Consultants Inc.  
 Oriental Consultants Co., Ltd

DRAWING TITLE: Plan and Profile (5)

PREPARED BY	CHECKED BY	APPROVED BY
NAME		
SIGNATURE		
DATE		

SCALE	SHEET NO.	DRAWING NO.	REV. NO.
1/10,000		6	-



JAPAN INTERNATIONAL COOPERATION AGENCY  
 NATIONAL ROAD ADMINISTRATION

REMARKS:

THE PREPARATORY SURVEY ON ROAD IMPROVEMENT PLAN IN NACALA DEVELOPMENT CORRIDOR  
 (N13: CUAMBA-MANDIMBA-LICHINGA)

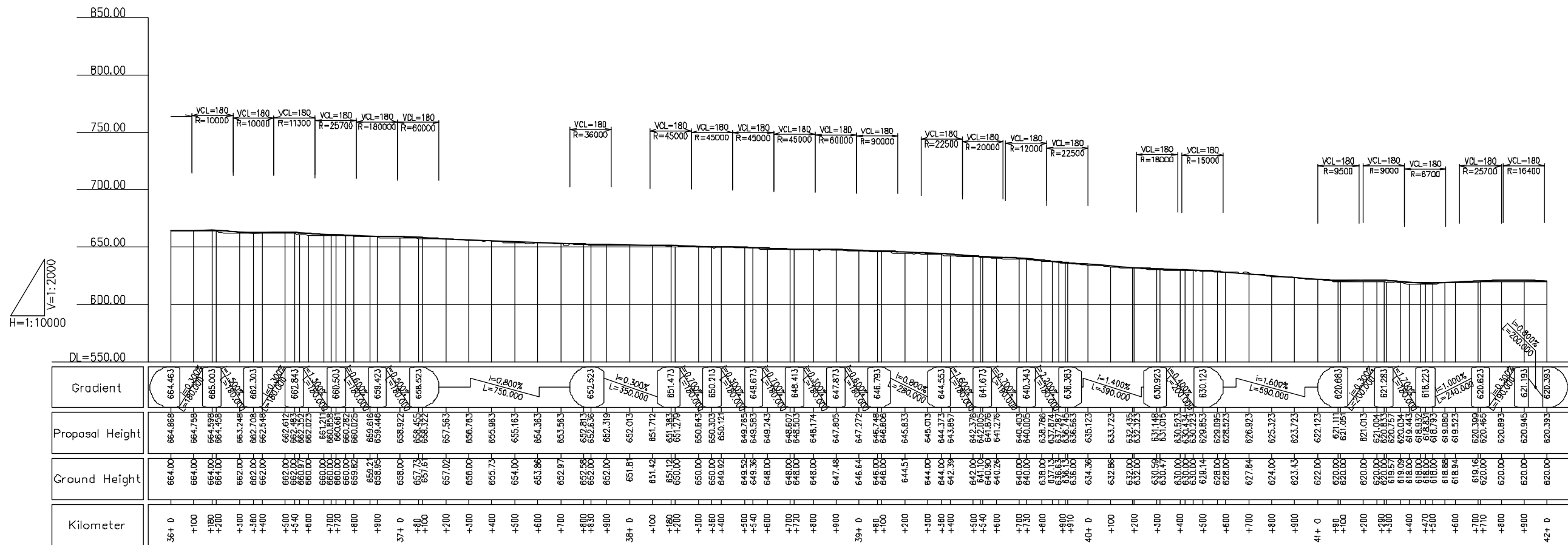
Eight-Japan Engineering Consultants Inc.  
 Oriental Consultants Co., Ltd

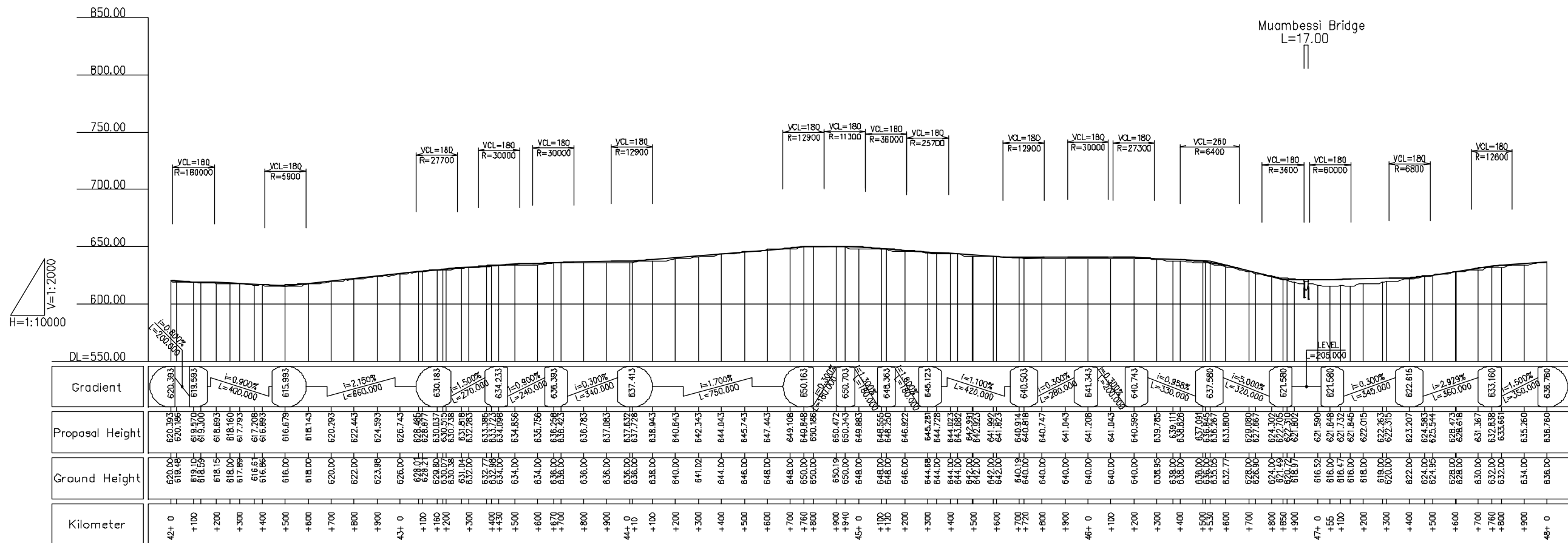
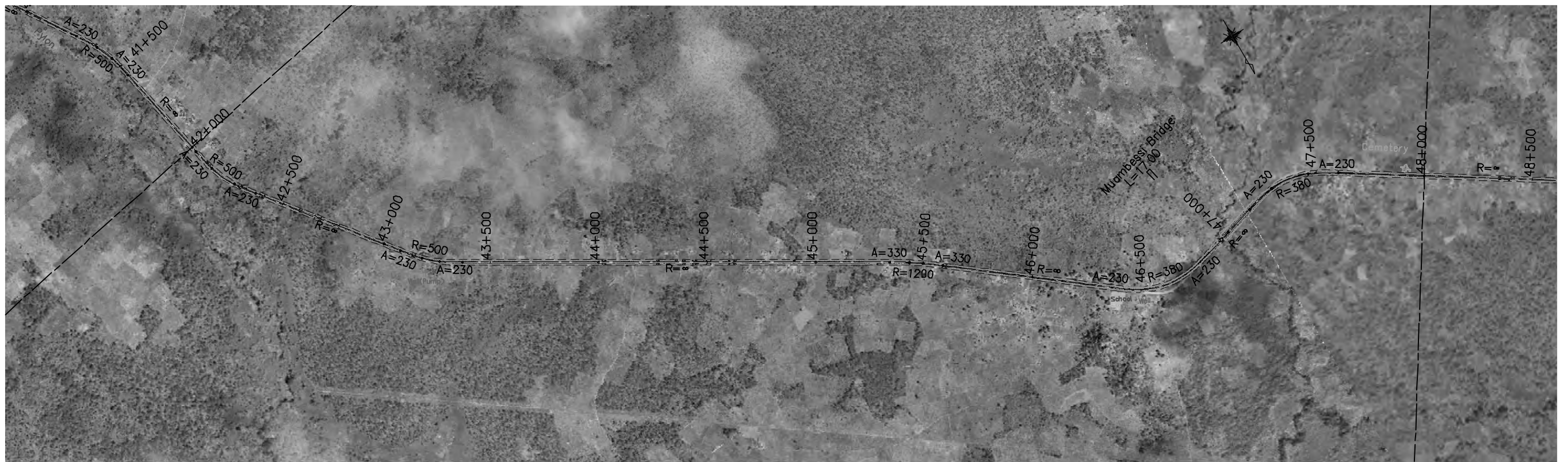
DRAWING TITLE

Plan and Profile (6)

PREPARED BY	CHECKED BY	APPROVED BY
NAME		
SIGNATURE		
DATE		

SCALE	SHEET NO.	DRAWING NO.	REV. NO.
1/10,000	7	7	-





JICA JAPAN INTERNATIONAL COOPERATION AGENCY

ANE NATIONAL ROAD ADMINISTRATION

REMARKS:

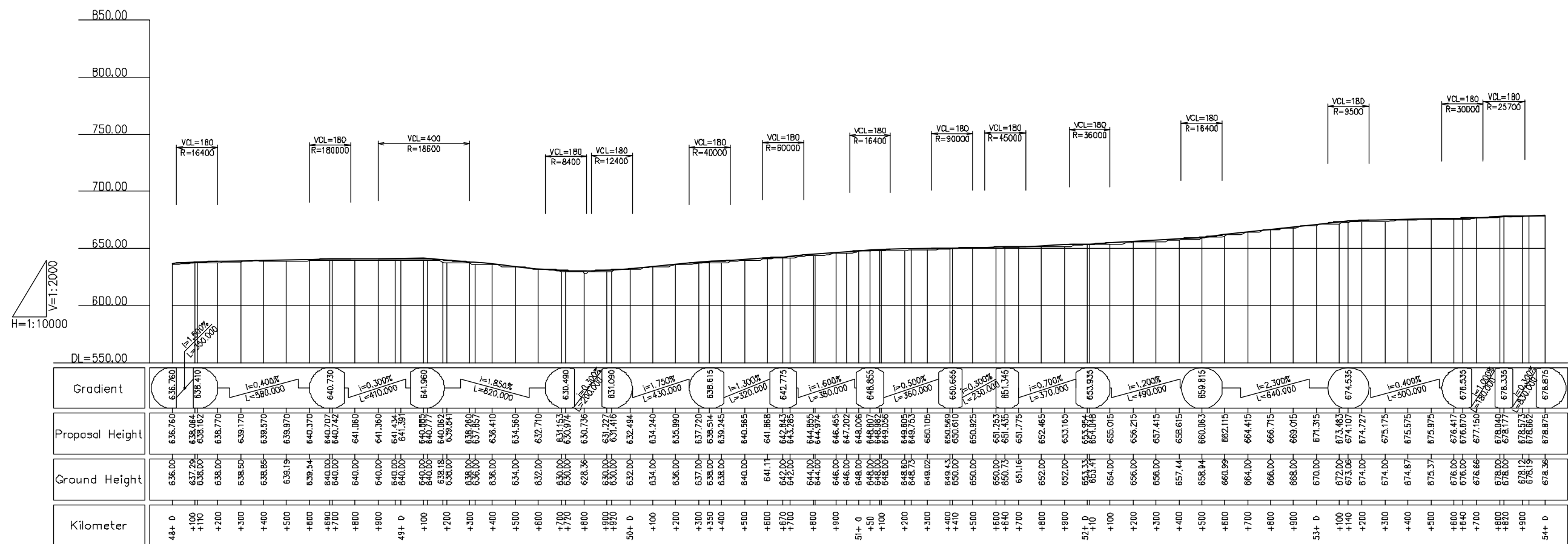
THE PREPARATORY SURVEY ON ROAD IMPROVEMENT PLAN IN NACALA DEVELOPMENT CORRIDOR (N13: CUAMBA-MANDIMBA-LICHINGA)

Eight-Japan Engineering Consultants Inc.  
Oriental Consultants Co., Ltd

DRAWING TITLE  
Plan and Profile (8)

	PREPARED BY	CHECKED BY	APPROVED BY
NAME			
SIGNATURE			
DATE			

SCALE	SHEET NO.	DRAWING NO.	REV. NO.
1/10,000	9		-



	REMARKS:	<b>THE PREPARATORY SURVEY ON ROAD IMPROVEMENT PLAN IN NACALA DEVELOPMENT CORRIDOR (N13: CUAMBA-MANDIMBA-LICHINGA)</b>		
		Eight-Japan Engineering Consultants Inc. Oriental Consultants Co., Ltd		DRAWING TITLE <b>Plan and Profile (9)</b>
		PREPARED BY	CHECKED BY	APPROVED BY
		NAME		
		SIGNATURE		
		DATE		
		SCALE	SHEET NO.	DRAWING NO.
		1/10,000	10	REV. NO.
				-