

1:275,000

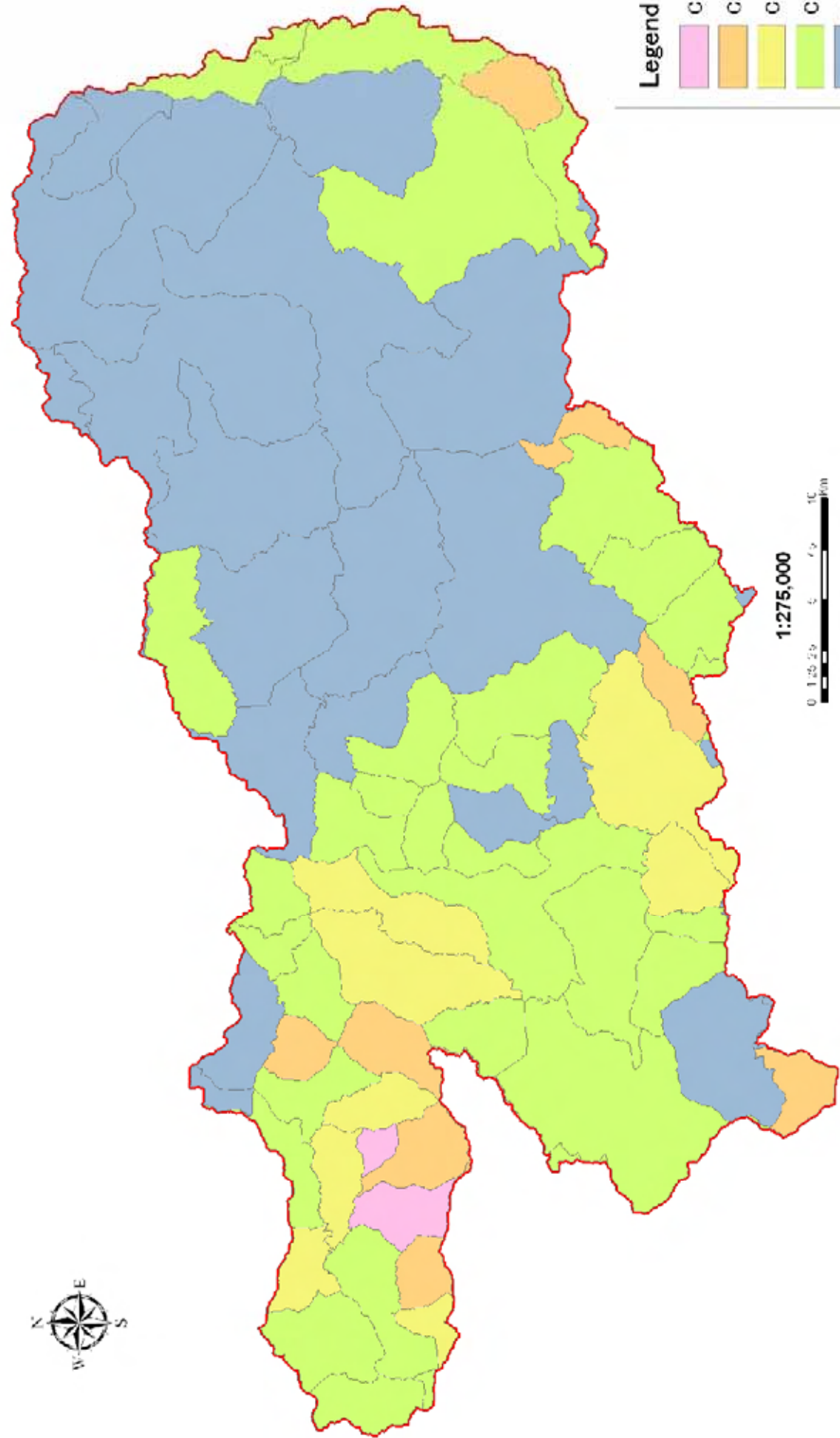


Community-based Integrated Watershed Management in Lacio and Comoro River Basins in the Democratic Republic of Timor-Leste

Figure 5.7 Potential Area for Grazing Control with Protein Bank Sub-program

Indicator	Class				
	1: Highly Suitable	2: Moderate Suitable	3: Marginal Suitable	4: Limited Suitable	5: Not Suitable
Degree of Animal Pressure (No. of Animals/Herd/ing Area)*	10 unit/ha	5 - 10 unit/ha	2.5 - 5 unit/ha	0.5 - 2.5 unit/ha	< 0.5 unit/ha

\*Herd/ing Area : Sparse and Grass land in SU and C-zone



**Legend**

Class 1
Class 2
Class 3
Class 4
Class 5

1:275,000

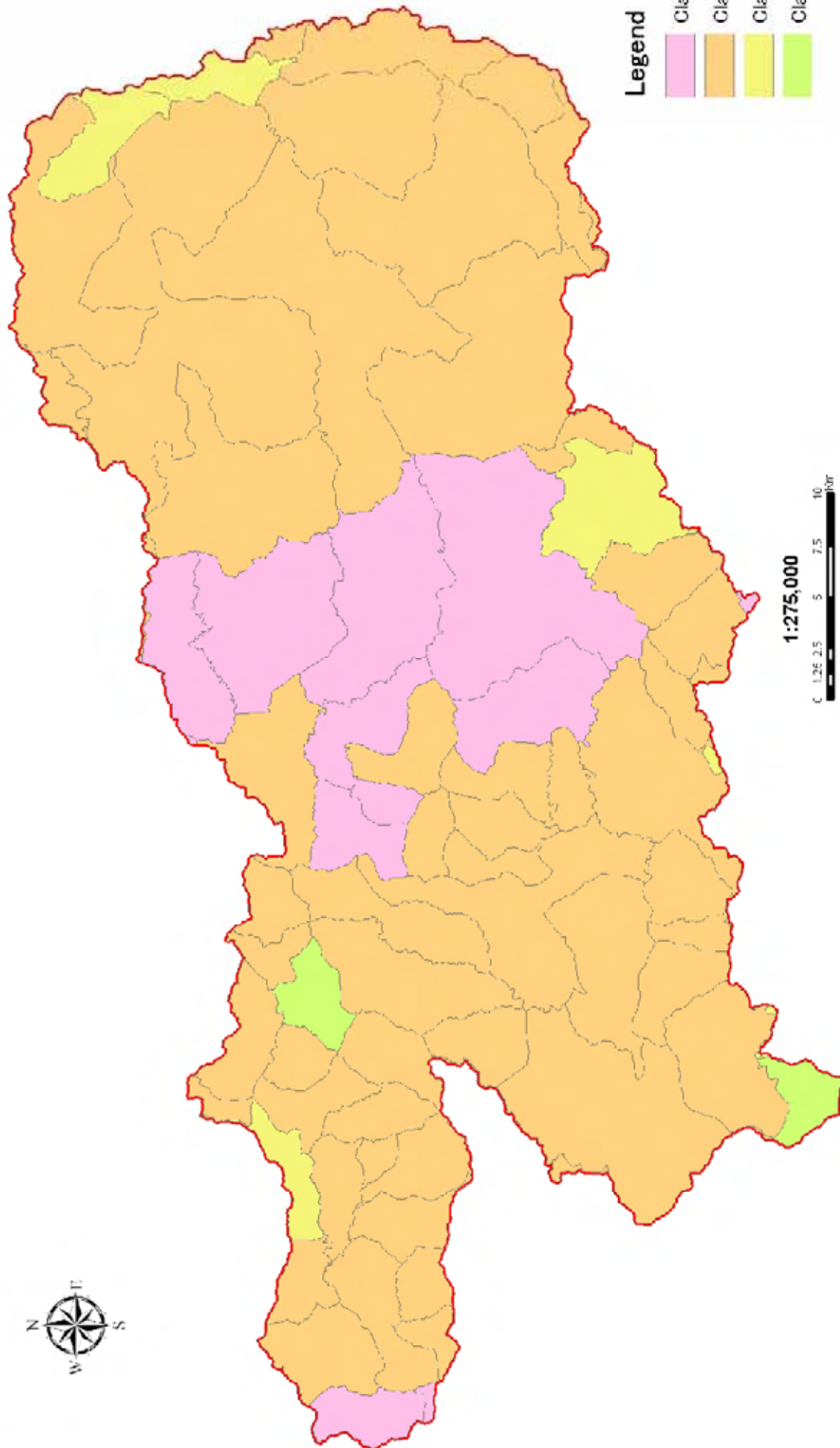


**Community-based Integrated Watershed Management in Lacio and Comoro River Basins in the Democratic Republic of Timor-Leste**

**Figure 5.8 Potential Area for Animal Feed Preservation Sub-program**

Indicator	Class				
	1: Highly Suitable	2: Moderate Suitable	3: Marginal Suitable	4: Limited Suitable	5: Not Suitable
Degree of Animal Pressure (No. of Animals/Herding Area)*	10 unit/ha	5 - 10 unit/ha	2.5 - 5 unit/ha	0.5 - 2.5 unit/ha	- 0.5 unit/ha

\*Herding Area : Sparse and Grass land in SU and C-zone



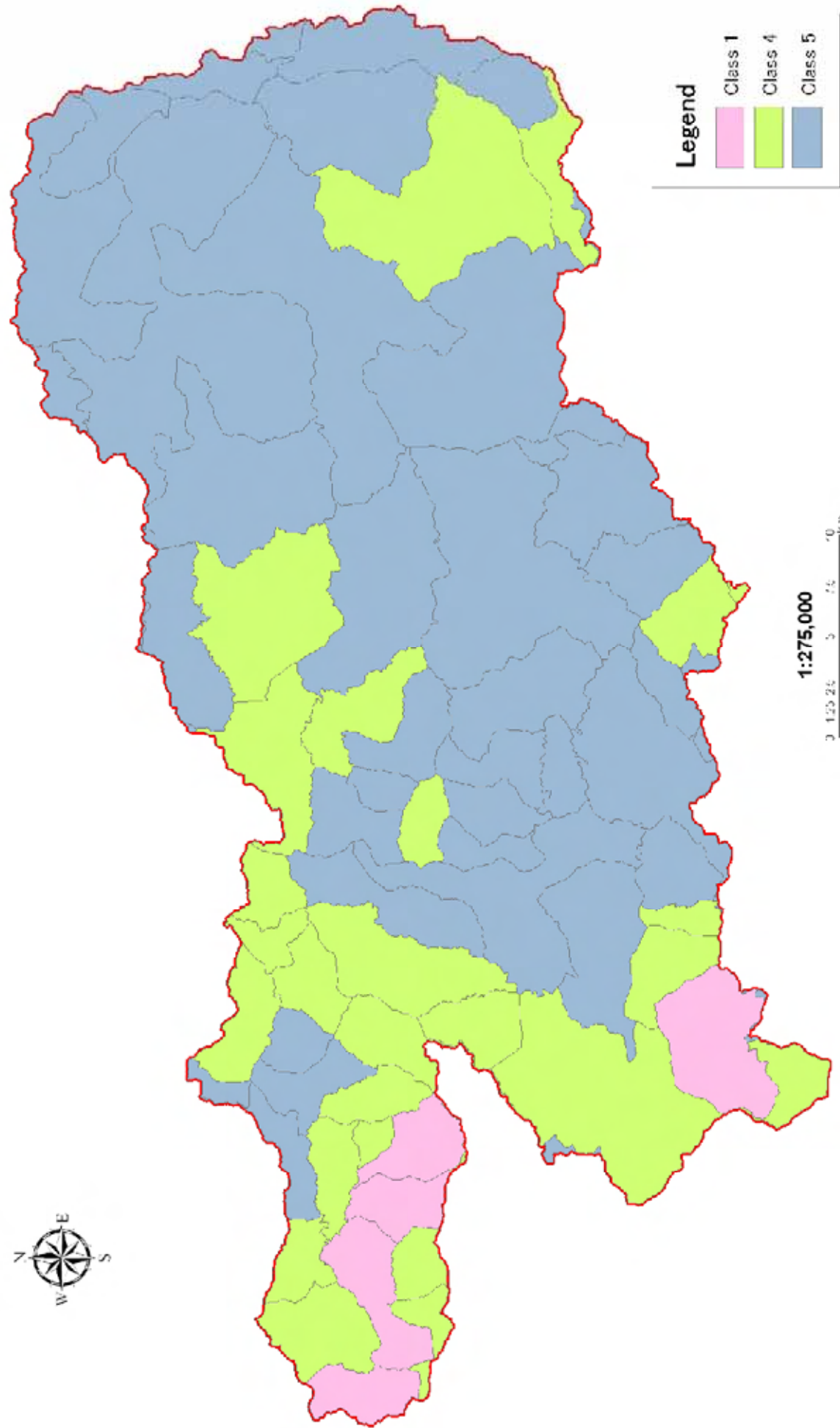
**Legend**

- Class 1
- Class 2
- Class 3
- Class 4

1:275,000  
 0 1.25 2.5 5 7.5 10 Kilometers

**Community-based Integrated Watershed Management in Lacio and Comoro River Basins in the Democratic Republic of Timor-Leste**  
**Figure 5.9 Potential Area for Sustainable Upland Farming Promotion Sub-program**

Indicator	Class			
	1 Highly Suitable	2 Moderate Suitable	3 Marginal Suitable	4 Limited Suitable
Proportion of SLM-zone and S-J-zone in the territory of subo	> 60%	30-70	40-50%	20-40%
				0-20%



**Legend**

- Class 1
- Class 4
- Class 5

1:275,000



**Community-based Integrated Watershed Management in Lacio and Comoro River Basins in the Democratic Republic of Timor-Leste**  
**Figure 5.10 Potential Area for Coffee Plantation Rehabilitation Sub-program**

Indicator	Class				
	1. Highly Suitable	2. Moderate Suitable	3. Marginal Suitable	4. Limited Suitable	5. Not Suitable
Area of coffee plantations in the territory of subco	> 200 ha	100 - 200 ha	50 - 100 ha	10 - 50 ha	0 - 10 ha

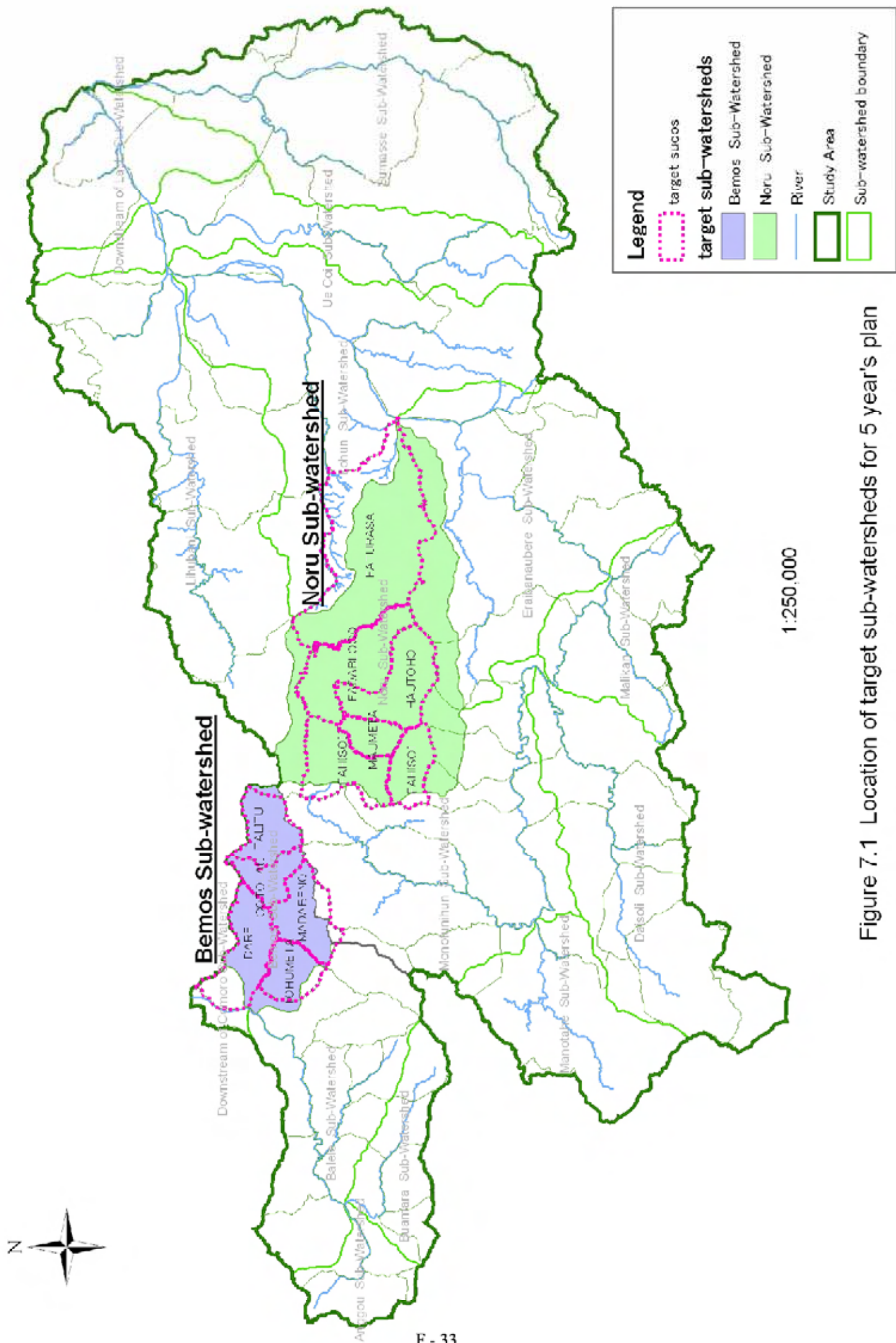


Figure 7.1 Location of target sub-watersheds for 5 year's plan

Figure 7.2 Implementation Schedule for Watershed Management in Priority Sub-watershed for the next Five Years

Banos	Year 2011			Year 2012			Year 2013			Year 2014			Year 2015											
	J	F	M	A	M	J	J	A	S	O	N	D	J	F	M	A	M	J	J	A	S	O	N	D
1. Preparatory Work																								
1.1 Procurement of Staff (Facilitators, Experts, Community Workers, etc.)																								
1.2 Procurement of Facilities and Equipment																								
1.3 Orientation/Guidance to the Staff																								
1.4 Socialization/Consultation with Target Villages																								
2. Implementation of the Identified Sub-programs																								
2.1 Implementation of CD-SP																								
2.1.1 Capacity Development Sub-program																								
2.2 Implementation of the sub-programs in success of Group 1 (Suco Tohumea, Suco Taliba, and Suco Cotulac)																								
2.2.1 Implementation of PLUP and PAC																								
(1) Participatory Land Use Planning Sub-program																								
(2) Public Awareness Campaign Sub-program																								
2.2.2 Implementation of the Other Sub-programs																								
(1) Sustainable Upland Farming Sub-program (in 3 sites)																								
(2) Initial Gully Control Sub-program (in 2 sites)																								
(3) Livestock Management/Seedling Production Promotion Sub-program (in 1 site)																								
(4) Grazing Control & Prohibit Bank Sub-program (in 1 suco)																								
(5) Corridor Rehabilitation Sub-program (in 1 suco)																								
(6) Community Based Seed Extension Sub-program (in 1 suco)																								
2.3 Implementation of the sub-programs in success of Group 2 (Suco Dare and Suco Machidico)																								
2.3.1 Implementation of PLUP and PAC																								
(1) Participatory Land Use Planning Sub-program																								
(2) Public Awareness Campaign Sub-program																								
2.3.2 Implementation of the Other Sub-programs																								
(1) Community Based Seed Extension Sub-program (in 2 sites)																								
(2) Home Garden Sub-program (in 2 sites)																								
(3) Sustainable Upland Farming Sub-program																								
(4) Income Generation / Cost Saving Sub-program																								

Noru	Year 2011			Year 2012			Year 2013			Year 2014			Year 2015											
	J	F	M	A	M	J	J	A	S	O	N	D	J	F	M	A	M	J	J	A	S	O	N	D
1. Preparatory Work																								
1.1 Procurement of Staff (Facilitators, Experts, Community Workers, etc.)																								
1.2 Procurement of Facilities and Equipment																								
1.3 Orientation/Guidance to the Staff																								
1.4 Socialization/Consultation with Target Villages																								
2. Implementation of the Identified Sub-programs																								
2.1 Implementation of CD-SP																								
2.1.1 Capacity Development Sub-program																								
2.2 Implementation of the sub-programs in success of Group 1 (Suco Tohumea, Suco Taliba, and Suco Cotulac)																								
2.2.1 Implementation of PLUP and PAC																								
(1) Participatory Land Use Planning Sub-program																								
(2) Public Awareness Campaign Sub-program																								
2.2.2 Implementation of the Other Sub-programs																								
(1) Sustainable Upland Farming Sub-program																								
(2) Community Based Seed Extension Sub-program																								
(3) Income Generation / Cost Saving Sub-program																								
2.3 Implementation of the sub-programs in success of Group 2 (Suco Ebatoka, Suco Fabisol (Liquidoc), and Suco Mauneta)																								
2.3.1 Implementation of PLUP and PAC																								
(1) Participatory Land Use Planning Sub-program																								
(2) Public Awareness Campaign Sub-program																								
2.3.2 Implementation of the Other Sub-programs																								
(1) Sustainable Upland Farming Sub-program																								
(2) Community Based Seed Extension Sub-program																								
(3) Income Generation / Cost Saving Sub-program																								