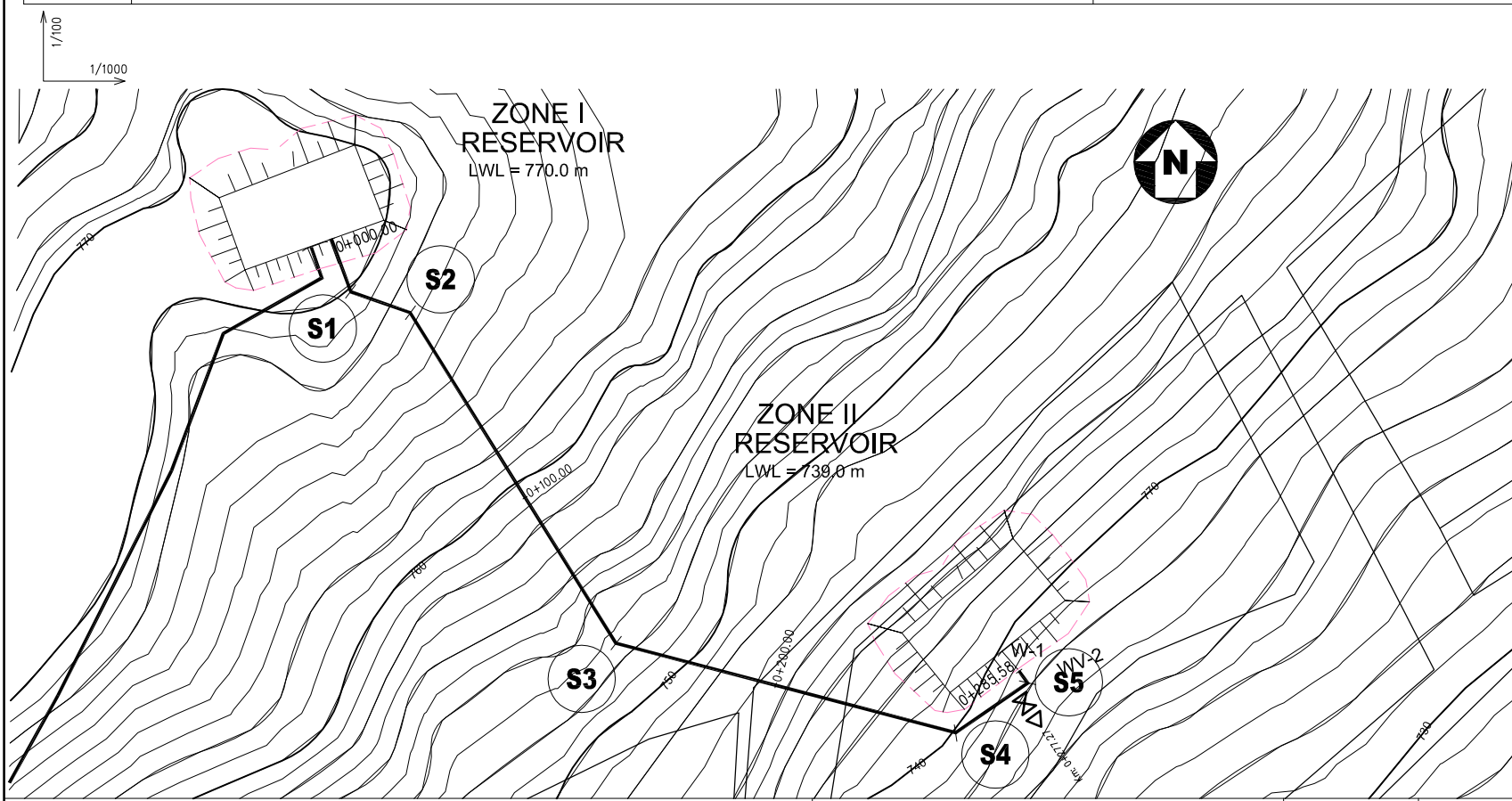
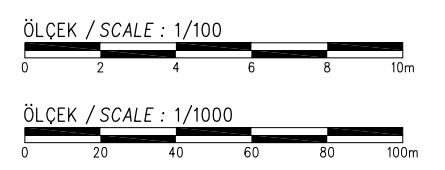
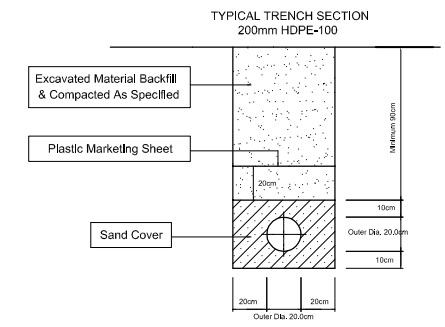


START OF LINE Km+000.00	V.BEND H.A. = 8.668 Km+009.79	H.BEND H.A. = 56.159 Km+016.66	V.A. = 58 Km+029.06	H.BEND H.A. = 43.229 Km+035.29	H.BEND H.A. = 46.229 Km+150.92	V.A. = 4099 Km+237.00	H.BEND H.A. = 54.629 Km+252.26	WASHOUT V.A. = 109, W.A.Z. = 94.49 Km+281.23	END OF LINE Km+285.58																						
769																															
768																															
767																															
766																															
765																															
764																															
763																															
762																															
761																															
760																															
759																															
758																															
757																															
756																															
755																															
NODE NR	0	1	2	3	4	5	6	7	8	9	10	11	12	13	14	15	16	17	18	19	20	21	22	23	24	25	26				
EXC. DEPTH	0.6	0.62	1.36	1.3	2.35	1.85	1.74	1.94	2.07	1.34	1.65	1.69	1.52	1.53	1.61	1.69	1.52	1.43	1.33	0.38	0.38	0.38	0.38	0.38	0.38	0.38	0.38	0.38			
GROUND ELEVATION	770.00	770.00	769.78	768.00	762.00	759.15	758.00	756.77	756.00	754.00	753.24	752.60	752.00	750.81	749.80	748.00	747.27	742.00	741.45	739.88	738.49	738.21	738.21	738.21	738.21	738.21	738.21	738.21	738.21		
PIPE AXIS ELEVATION	769.60	769.58	768.62	766.90	759.85	757.50	756.46	755.03	754.13	752.86	751.79	751.11	750.34	749.09	748.03	746.90	745.77	744.26	743.74	739.96	737.36	737.95	737.95	737.95	737.95	737.95	737.95	737.95			
DISTANCE (m)	9.79	8.89	12.40	6.23	48.15	18.16	8.04	11.05	6.92	9.80	8.28	5.25	9.3	9.66	8.18	8.74	8.70	11.68	4.08	9.37	5.50	7.11	14.90	3.96	4.34	4.34	4.34	4.34			
STATION	0+000.00	0+009.79	0+016.66	0+029.06	0+035.29	0+083.44	0+101.60	0+109.64	0+120.69	0+127.61	0+137.41	0+145.69	0+150.92	0+156.85	0+165.51	0+174.69	0+183.43	0+192.13	0+203.81	0+207.86	0+215.49	0+220.80	0+232.16	0+237.00	0+240.39	0+249.76	0+255.26	0+262.37	0+277.27	0+281.23	0+285.58
PIPE SLOPE (m/m)	0.02039 8.79	0.01468 19.27	0.01666 19.27	0.02906 19.27	0.03529 19.27	0.08344 19.27	0.10160 19.27	0.10964 19.27	0.12069 19.27	0.12761 19.27	0.13741 19.27	0.14569 19.27	0.15092 19.27	0.15685 19.27	0.16551 19.27	0.17469 19.27	0.18343 19.27	0.19213 19.27	0.20381 19.27	0.20786 19.27	0.21549 19.27	0.22080 19.27	0.23216 19.27	0.23700 19.27	0.24039 19.27	0.24976 19.27	0.25526 19.27	0.26237 19.27	0.27727 19.27	0.28123 19.27	0.28558 19.27
DISTANCE BTW. H. BENDS (m)	56.159	43.229	18.63	18.63	115.62	18.16	8.04	11.05	6.92	9.80	8.28	5.25	9.3	9.66	8.18	8.74	8.70	11.68	4.08	9.37	5.50	7.11	14.90	3.96	4.34	4.34	4.34	4.34	4.34	4.34	4.34
PIPE DIAMETER	DN200 HDPE-100 PIPE (PN6, OUTER DIAMETER=200mm, t=7.3mm)																														
PIPE TYPE																															

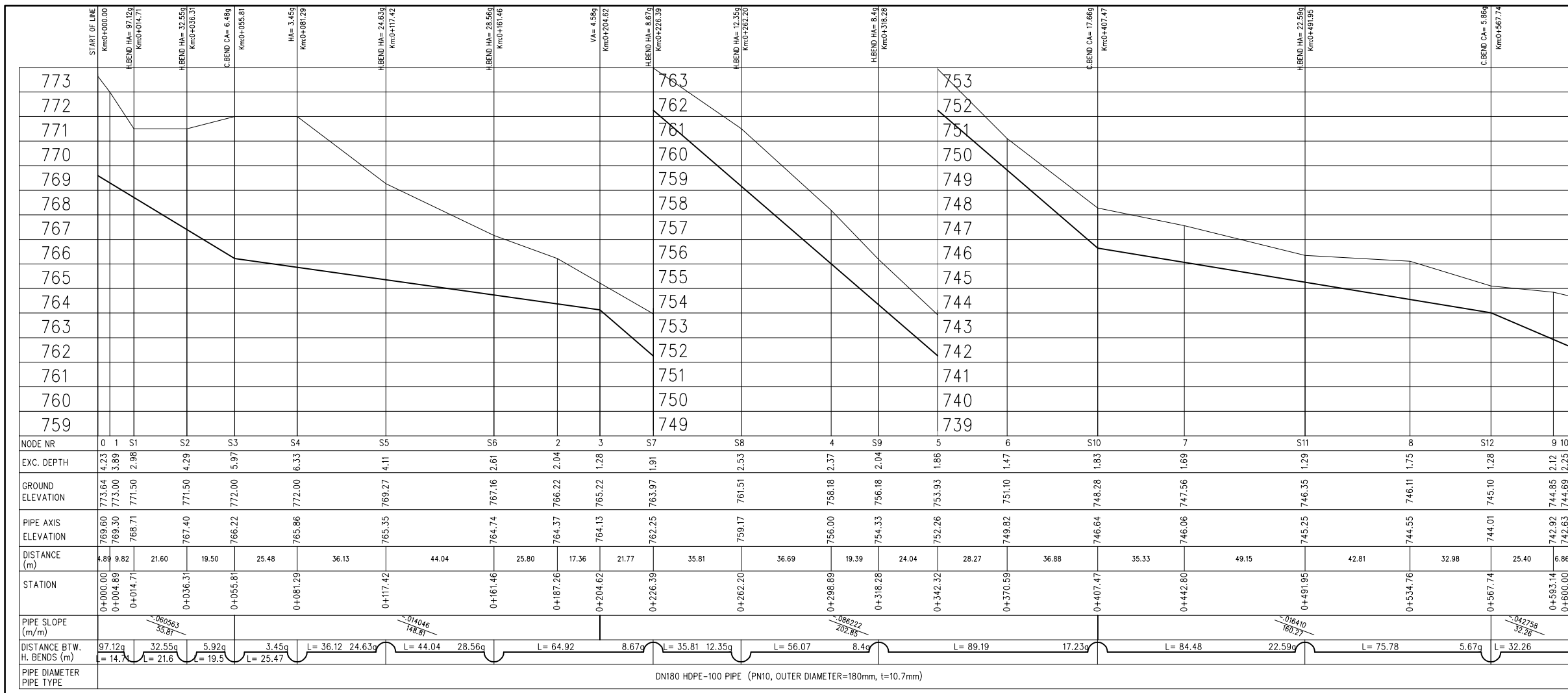
**LEGEND**

	AIR VALVE	V. BEND	= VERTICAL BEND
	WASHOUT VALVE	H. BEND	= HORIZONTAL BEND
	LINE VALVE	C. BEND	= COMBINED BEND
		VA	= VERTICAL ANGLE (in grad)
		HA	= HORIZONTAL ANGLE (in grad)
		CA	= COMBINED ANGLE (in grad)
		AV	= AIR VALVE
		WV	= WASHOUT VALVE
		LV	= LINE VALVE

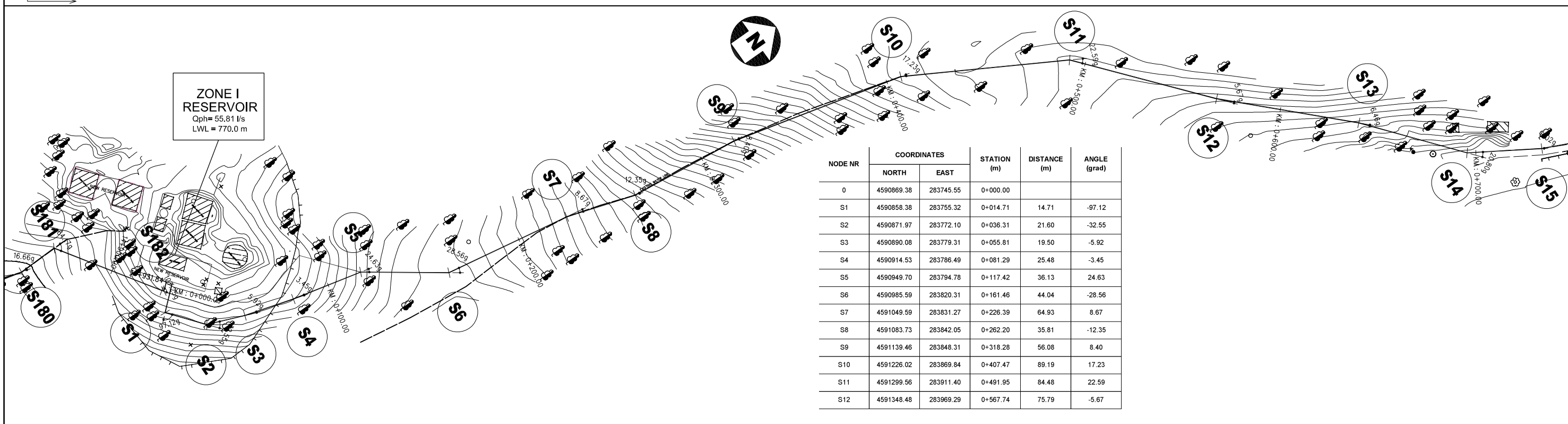
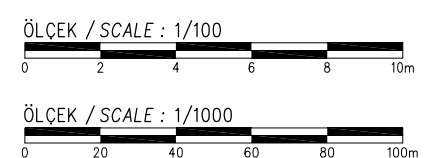
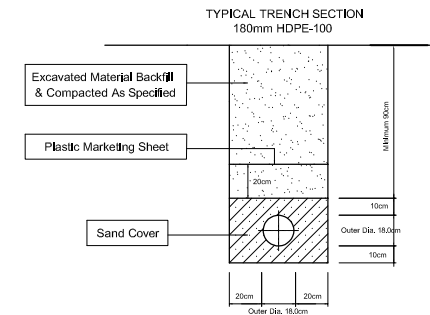


NODE NR	COORDINATES		STATION (m)	DISTANCE (m)	ANGLE (grad)
	NORTH	EAST			
0	4590871.17	283746.32	0+000.00		
S1	4590858.78	283757.46	0+016.66	16.66	-56.15
S2	4590859.60	283776.07	0+035.29	18.63	43.22
S3	4590791.00	283869.16	0+150.92	115.63	-48.22
S4	4590803.73	283972.72	0+255.26	104.34	-54.62
S5	4590825.31	283987.18	0+281.23	25.98	-101.77
26	4590827.63	283983.50	0+285.58	4.35	

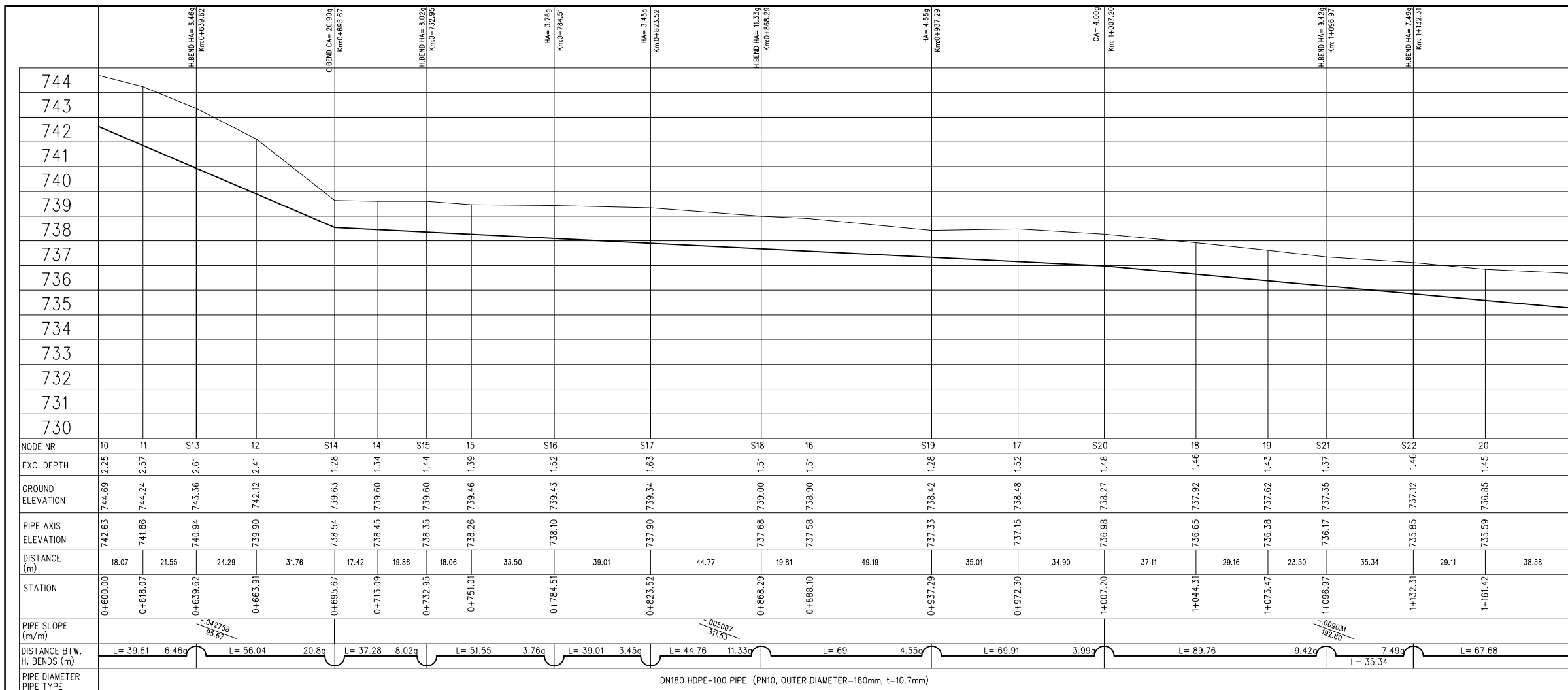
SPECIAL ASSISTANCE FOR PROJECT IMPLEMENTATION (SAPI) FOR THE PROVINCIAL CITIES WATER SUPPLY AND SEWERAGE PROJECT IN THE REPUBLIC OF AZERBAIJAN	AZERSU JOINT STOCK COMPANY, the Republic of Azerbaijan		Site :	Facility :	Title :	Scale of Drawing :	Category - City	Facility Code - Number
	Japan International Cooperation Agency (JICA), Japan		Gusar	Plan & Profile of TL from Zone I Service Reservoir to Zone II Service Reservoir	Between KM: 0+000.00 - 0+285.58	1/1000	SU-GUS-	09-03(01)
						Original Size of Paper :	Date	Revision Number
						A1	March 2010	Rev.0



- LEGEND**
- AIR VALVE
  - WASHOUT VALVE
  - LINE VALVE
  - V. BEND = VERTICAL BEND
  - H. BEND = HORIZONTAL BEND
  - C. BEND = COMBINED BEND
  - VA = VERTICAL ANGLE (in grad)
  - HA = HORIZONTAL ANGLE (in grad)
  - CA = COMBINED ANGLE (in grad)
  - AV = AIR VALVE
  - WV = WASHOUT VALVE
  - LV = LINE VALVE

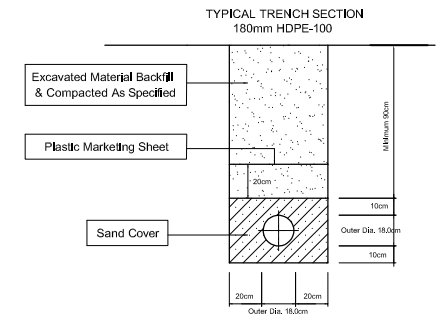


SPECIAL ASSISTANCE FOR PROJECT IMPLEMENTATION (SAPI) FOR THE PROVINCIAL CITIES WATER SUPPLY AND SEWERAGE PROJECT IN THE REPUBLIC OF AZERBAIJAN	AZERSU JOINT STOCK COMPANY, the Republic of Azerbaijan		Site :	Facility :	Title :	Scale of Drawing :	Category - City	Facility Code - Number
	Japan International Cooperation Agency (JICA), Japan		Gusar	Plan & Profile of TL From Zone I Service Reservoir to Zone III Service Reservoir	Between KM: 0+000.00 - 0+600.00	1/1000	SU-GUS-	09-04(01)
						Original Size of Paper : A1	Date : March 2010	Revision Number : Rev.0

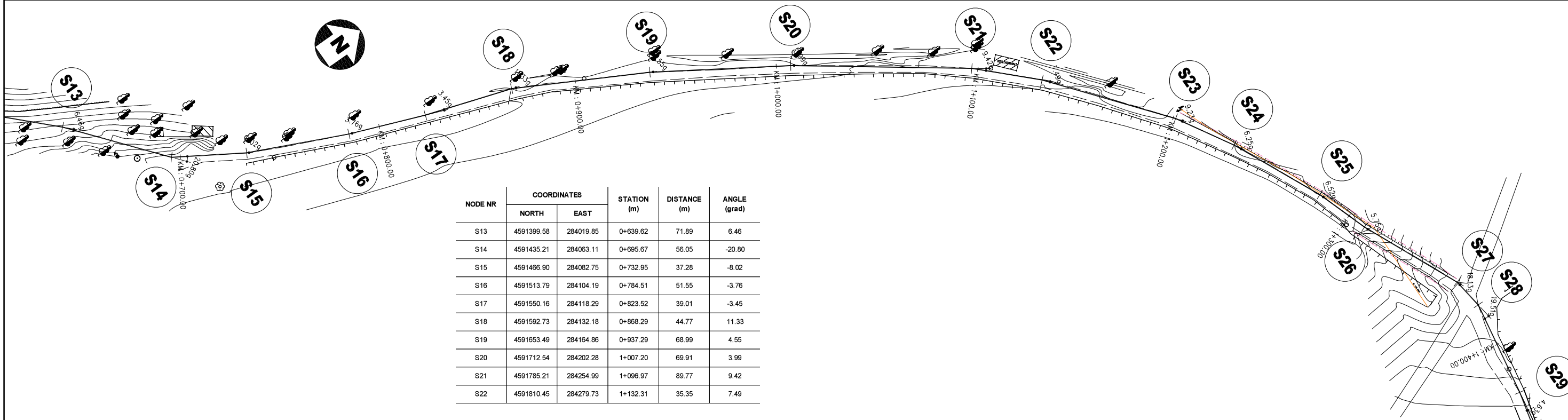
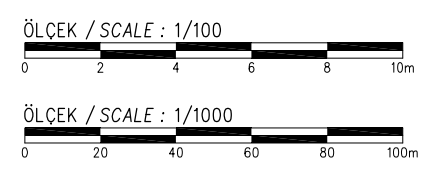


**LEGEND**

	AIR VALVE	V. BEND	= VERTICAL BEND
	WASHOUT VALVE	H. BEND	= HORIZONTAL BEND
	LINE VALVE	C. BEND	= COMBINED BEND
		VA	= VERTICAL ANGLE (in grad)
		HA	= HORIZONTAL ANGLE (in grad)
		CA	= COMBINED ANGLE (in grad)
		AV	= AIR VALVE
		WV	= WASHOUT VALVE
		LV	= LINE VALVE

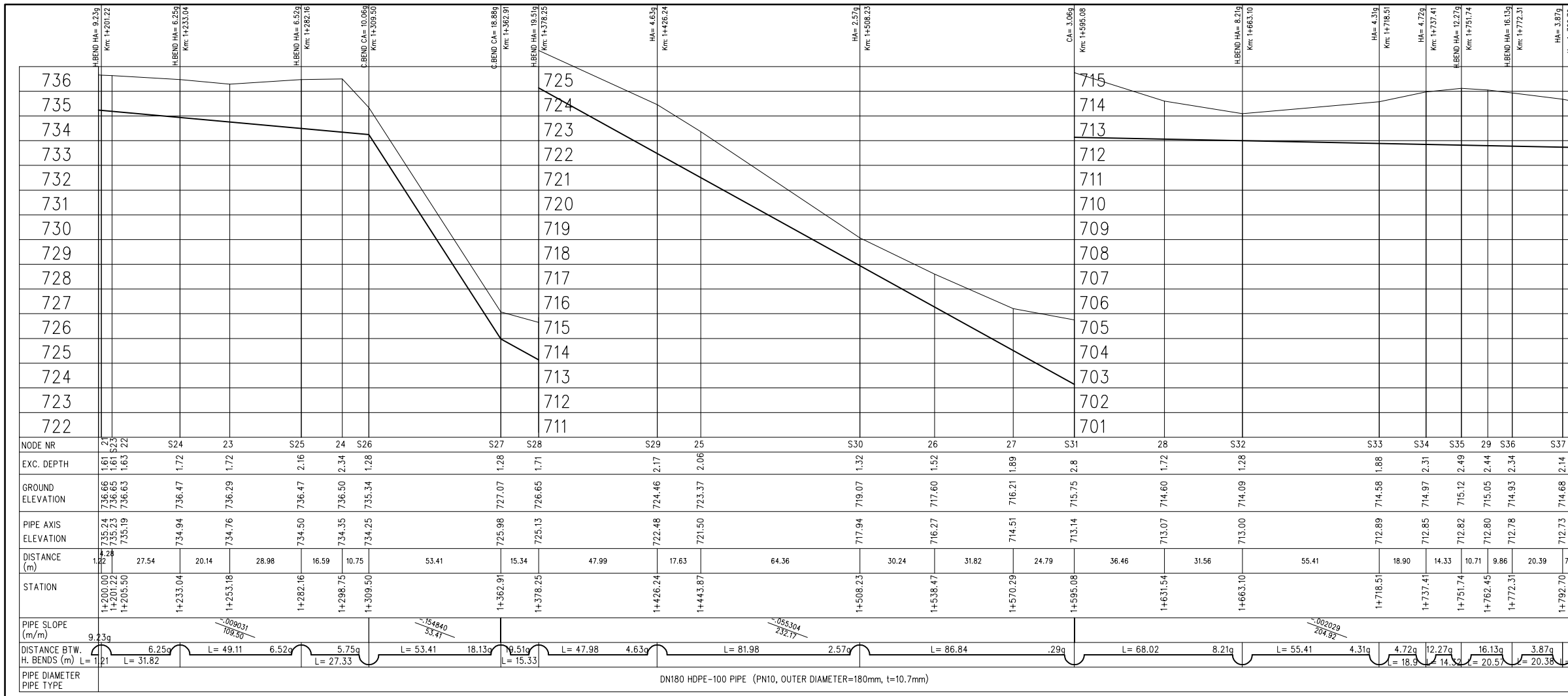


NODE NR	10	11	S13	12	S14	14	S15	15	S16	16	S17	18	S19	17	S20	18	19	S21	20	21	
EXC. DEPTH	2.25	2.57	2.61	2.41	1.28	1.34	1.44	1.39	1.52	1.63	1.51	1.46	1.52	1.48	1.46	1.43	1.37	1.46	1.45	1.61	
GROUND ELEVATION	744.69	744.24	743.36	742.12	739.63	739.60	739.60	739.46	739.43	739.34	739.00	738.90	738.48	738.27	737.92	737.62	737.35	737.12	736.85	736.66	
PIPE AXIS ELEVATION	742.63	741.86	740.94	739.90	738.54	738.45	738.35	738.26	738.10	737.90	737.68	737.58	737.33	737.15	736.98	736.65	736.38	736.17	735.85	735.24	
DISTANCE (m)	18.07	21.55	24.29	31.76	17.42	19.86	18.06	33.50	39.01	44.77	19.81	49.19	35.01	34.90	37.11	29.16	23.50	35.34	29.11	38.58	
STATION	0+600.00	0+618.07	0+639.62	0+665.91	0+695.67	0+713.09	0+732.95	0+751.01	0+784.51	0+823.52	0+868.29	0+888.10	0+937.29	0+972.30	1+007.20	1+044.31	1+073.47	1+096.97	1+132.31	1+161.42	1+200.00
PIPE SLOPE (m/m)					-0.43758 95.67						-0.06207 311.33								-0.09031 192.80		
DISTANCE BTW. H. BENDS (m)	L= 39.61	6.46g	L= 56.04	20.8g	L= 37.28	8.02g	L= 51.55	3.76g	L= 39.01	3.45g	L= 44.76	11.33g	L= 69	4.55g	L= 69.91	3.99g	L= 89.76	9.42g	L= 35.34	7.49g	L= 67.68
PIPE DIAMETER	DN180 HDPE-100 PIPE (PN10, OUTER DIAMETER=180mm, t=10.7mm)																				
PIPE TYPE																					



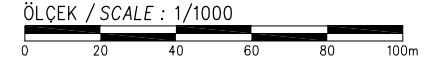
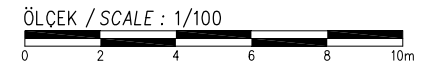
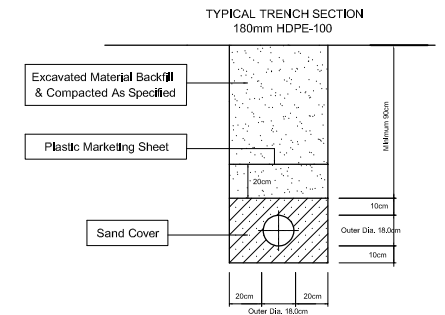
NODE NR	COORDINATES		STATION (m)	DISTANCE (m)	ANGLE (grad)
	NORTH	EAST			
S13	4591399.58	284019.85	0+639.62	71.89	6.46
S14	4591435.21	284063.11	0+695.67	56.05	-20.80
S15	4591466.90	284082.75	0+732.95	37.28	-8.02
S16	4591513.79	284104.19	0+784.51	51.55	-3.76
S17	4591550.16	284118.29	0+823.52	39.01	-3.45
S18	4591592.73	284132.18	0+868.29	44.77	11.33
S19	4591653.49	284164.86	0+937.29	68.99	4.55
S20	4591712.54	284202.28	1+007.20	69.91	3.99
S21	4591785.21	284254.99	1+096.97	89.77	9.42
S22	4591810.45	284279.73	1+132.31	35.35	7.49

SPECIAL ASSISTANCE FOR PROJECT IMPLEMENTATION (SAPI) FOR THE PROVINCIAL CITIES WATER SUPPLY AND SEWERAGE PROJECT IN THE REPUBLIC OF AZERBAIJAN	AZERSU JOINT STOCK COMPANY, the Republic of Azerbaijan		Site :	Facility :	Title :	Scale of Drawing :	Category - City	Facility Code - Number
	Japan International Cooperation Agency (JICA), Japan		Gusar	Plan & Profile of TL From Zone I Service Reservoir to Zone III Service Reservoir	Between KM: 0+600.00 - 1+200.00	1/1000	SU-GUS-	09-04(02)
						Original Size of Paper : A1	Date	Revision Number
							March 2010	Rev.0

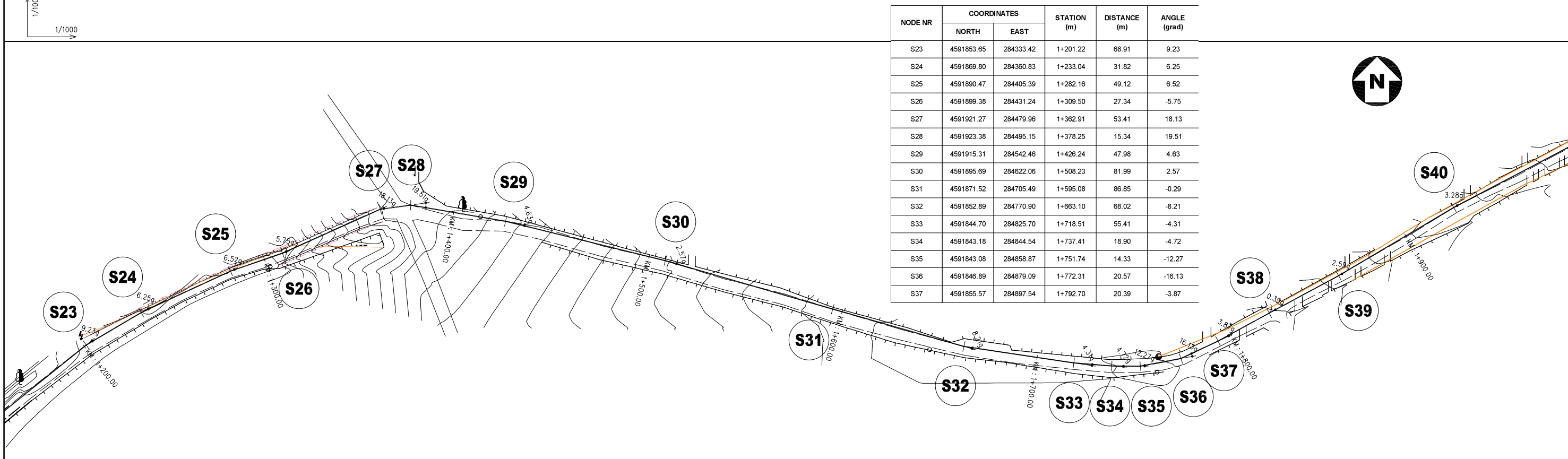


**LEGEND**

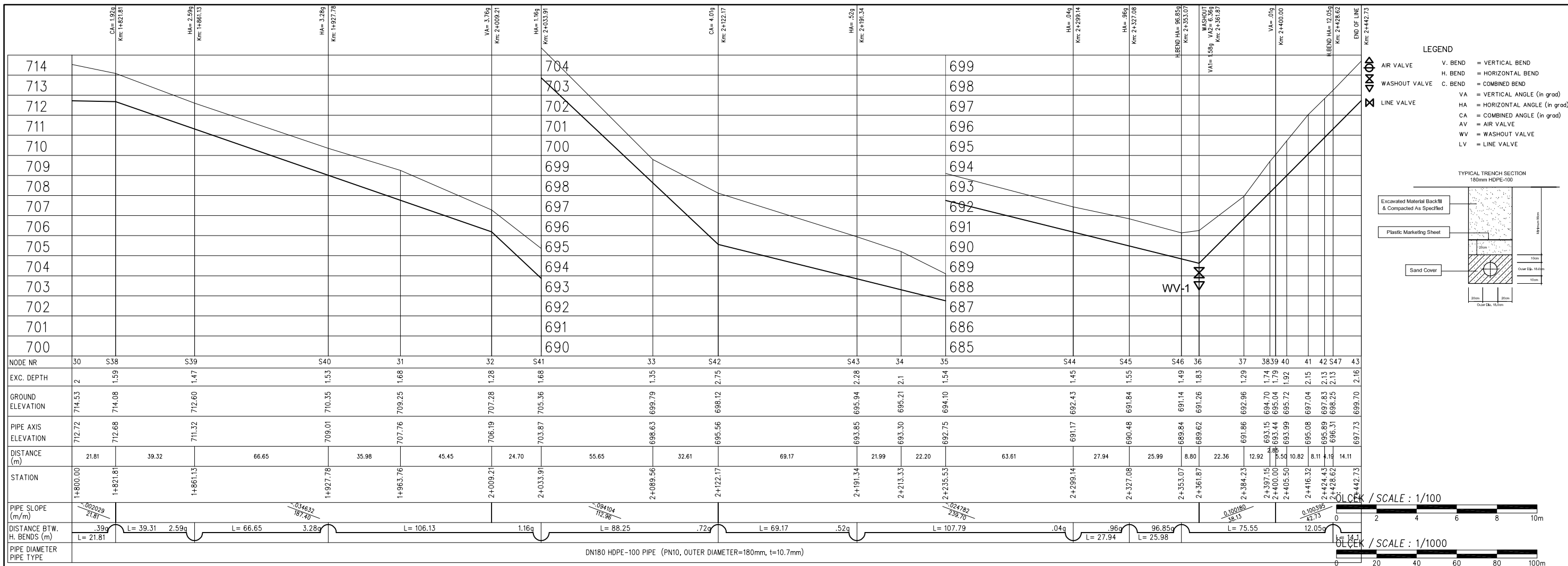
- AIR VALVE
- WASHOUT VALVE
- LINE VALVE
- V. BEND = VERTICAL BEND
- H. BEND = HORIZONTAL BEND
- C. BEND = COMBINED BEND
- VA = VERTICAL ANGLE (in grad)
- HA = HORIZONTAL ANGLE (in grad)
- CA = COMBINED ANGLE (in grad)
- AV = AIR VALVE
- WV = WASHOUT VALVE
- LV = LINE VALVE



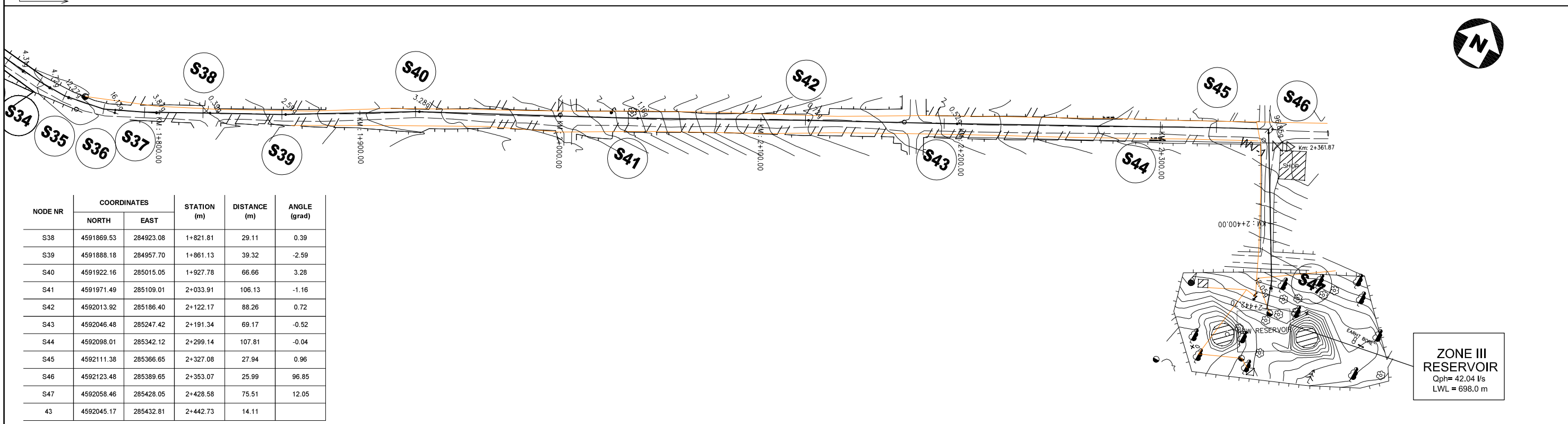
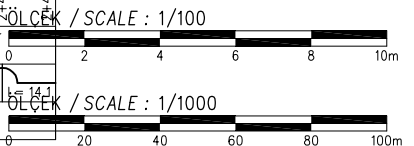
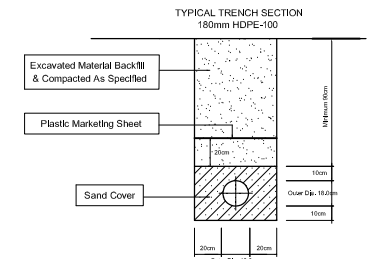
NODE NR	COORDINATES		STATION (m)	DISTANCE (m)	ANGLE (grad)
	NORTH	EAST			
S23	4591853.65	284333.42	1+201.22	68.91	9.23
S24	4591869.80	284360.83	1+233.04	31.82	6.25
S25	4591890.47	284405.39	1+282.16	49.12	6.52
S26	4591899.38	284431.24	1+309.50	27.34	-5.75
S27	4591921.27	284479.96	1+362.91	53.41	18.13
S28	4591923.38	284495.15	1+378.25	15.34	19.51
S29	4591915.31	284542.46	1+426.24	47.98	4.63
S30	4591895.69	284622.06	1+508.23	81.99	2.57
S31	4591871.52	284705.49	1+595.08	86.85	-0.29
S32	4591852.89	284770.90	1+663.10	68.02	-8.21
S33	4591844.70	284825.70	1+718.51	55.41	-4.31
S34	4591843.18	284844.54	1+737.41	18.90	-4.72
S35	4591843.08	284858.87	1+751.74	14.33	-12.27
S36	4591846.89	284879.09	1+772.31	20.57	-16.13
S37	4591855.57	284897.54	1+792.70	20.39	-3.87



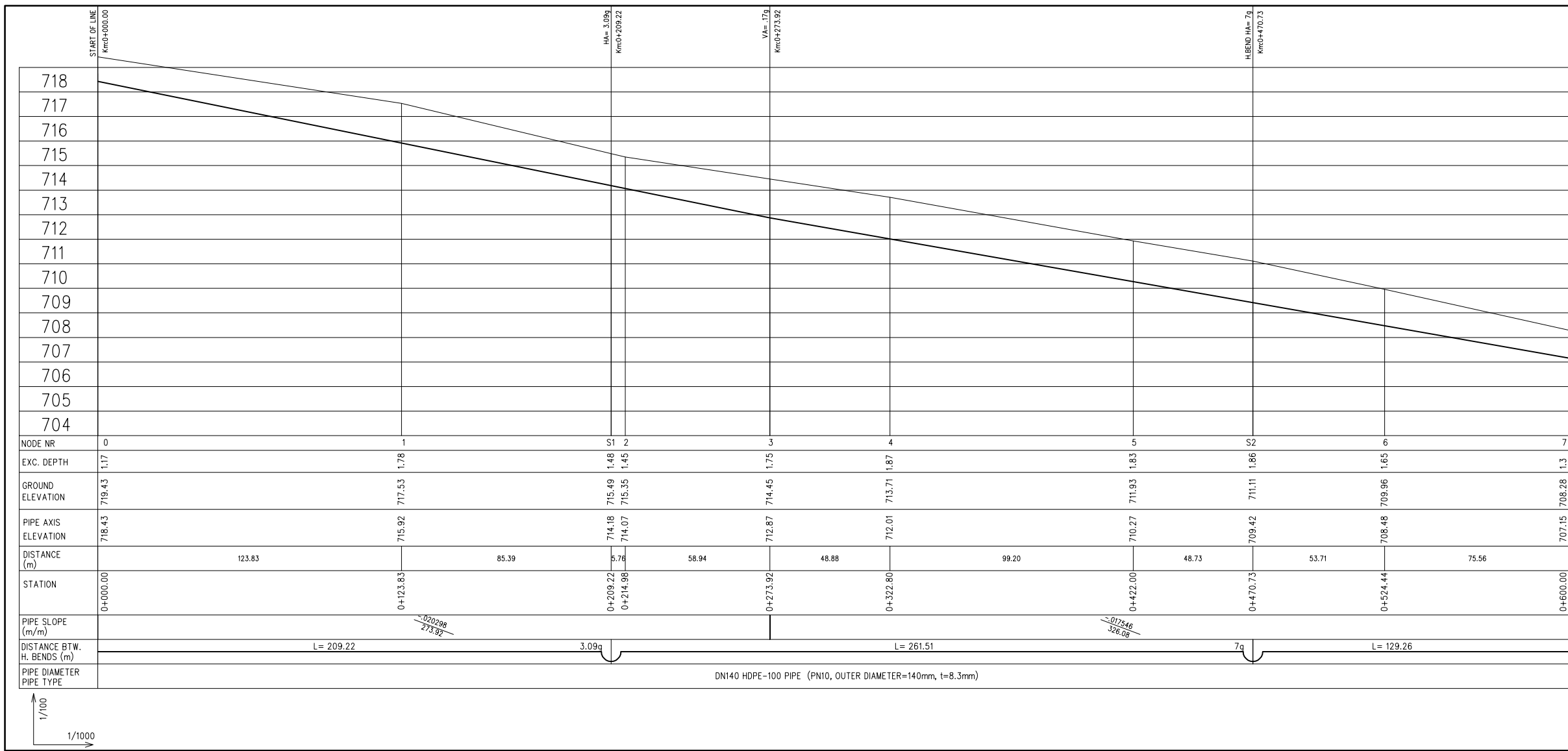
SPECIAL ASSISTANCE FOR PROJECT IMPLEMENTATION (SAPI) FOR THE PROVINCIAL CITIES WATER SUPPLY AND SEWERAGE PROJECT IN THE REPUBLIC OF AZERBAIJAN	AZERSU JOINT STOCK COMPANY, the Republic of Azerbaijan	Site : Gusar	Facility : Plan & Profile of TL From Zone I Service Reservoir to Zone III Service Reservoir	Title : Between KM: 1+200.00 - 1+800.00	Scale of Drawing : 1/1000	Category - City : SU-GUS-	Facility Code - Number : 09-04(03)
	Japan International Cooperation Agency (JICA), Japan				Original Size of Paper : A1	Date : March 2010	Revision Number : Rev.0



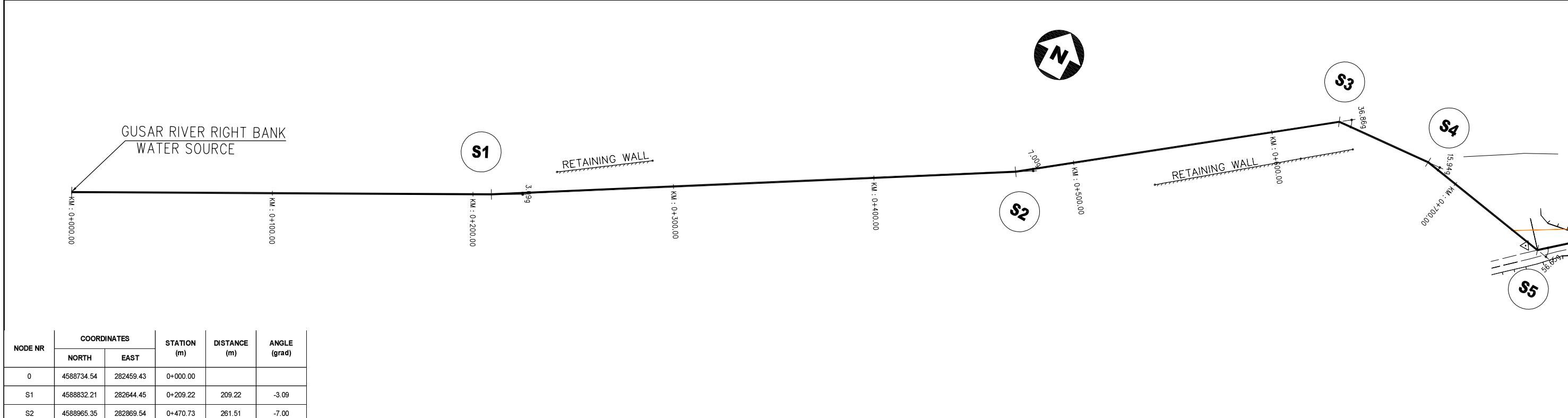
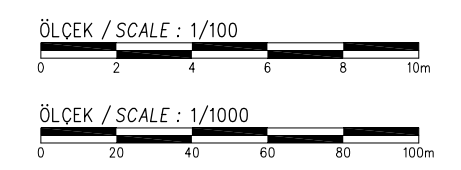
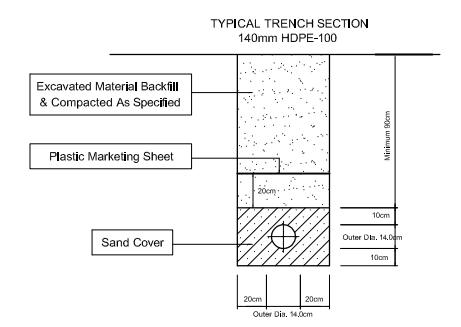
- LEGEND**
- V. BEND = VERTICAL BEND
  - H. BEND = HORIZONTAL BEND
  - C. BEND = COMBINED BEND
  - VA = VERTICAL ANGLE (in grad)
  - HA = HORIZONTAL ANGLE (in grad)
  - CA = COMBINED ANGLE (in grad)
  - AV = AIR VALVE
  - WV = WASHOUT VALVE
  - LV = LINE VALVE



SPECIAL ASSISTANCE FOR PROJECT IMPLEMENTATION (SAPI) FOR THE PROVINCIAL CITIES WATER SUPPLY AND SEWERAGE PROJECT IN THE REPUBLIC OF AZERBAIJAN	AZERSU JOINT STOCK COMPANY, the Republic of Azerbaijan		Site :	Facility :	Title :	Scale of Drawing :	Category - City	Facility Code - Number
	Japan International Cooperation Agency (JICA), Japan		Gusar	Plan & Profile of TL From Zone I Service Reservoir to Zone III Service Reservoir	Between KM: 1+800.00 - 2+442.73	1/1000	SU-GUS-	09-04(04)
						Original Size of Paper : A1	Date : March 2010	Revision Number : Rev.0

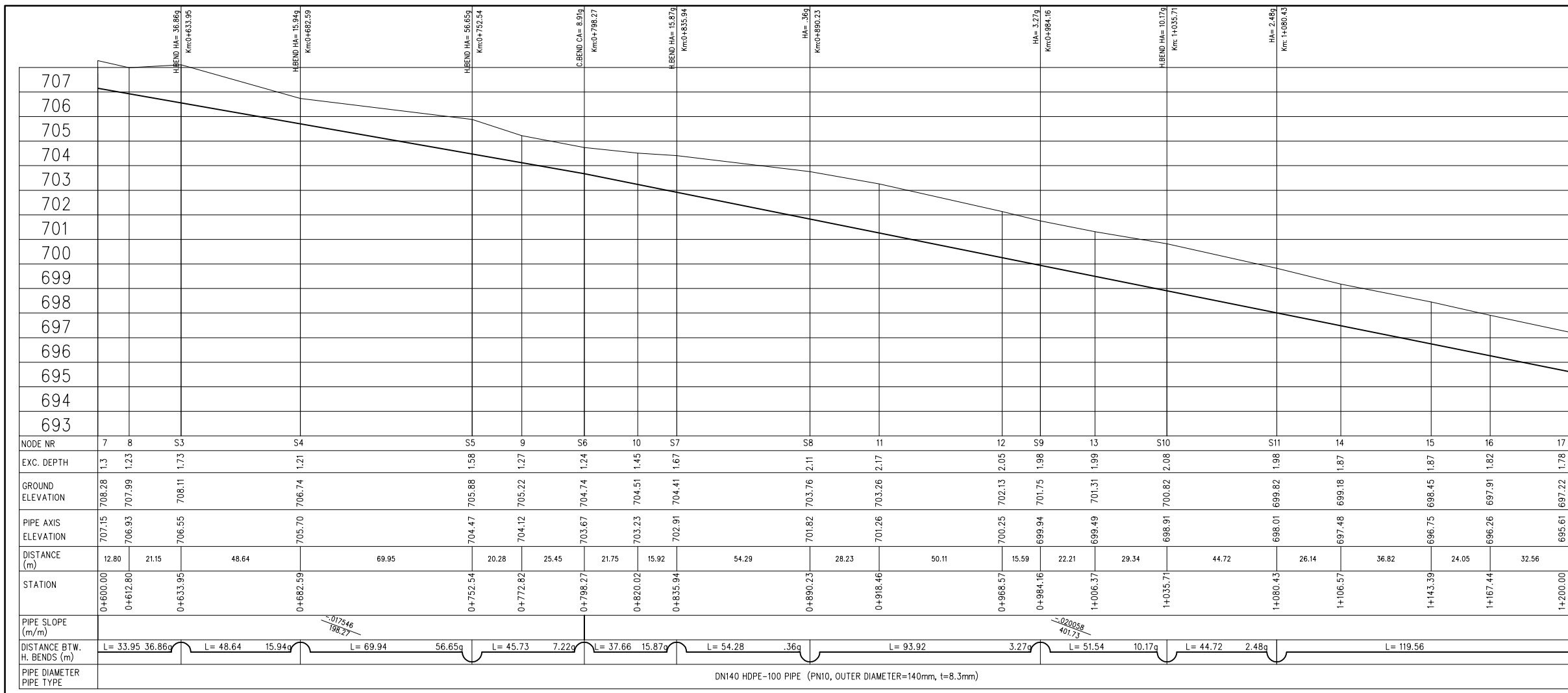


- LEGEND**
- AIR VALVE
  - WASHOUT VALVE
  - LINE VALVE
  - V. BEND = VERTICAL BEND
  - H. BEND = HORIZONTAL BEND
  - C. BEND = COMBINED BEND
  - VA = VERTICAL ANGLE (in grad)
  - HA = HORIZONTAL ANGLE (in grad)
  - CA = COMBINED ANGLE (in grad)
  - AV = AIR VALVE
  - WV = WASHOUT VALVE
  - LV = LINE VALVE

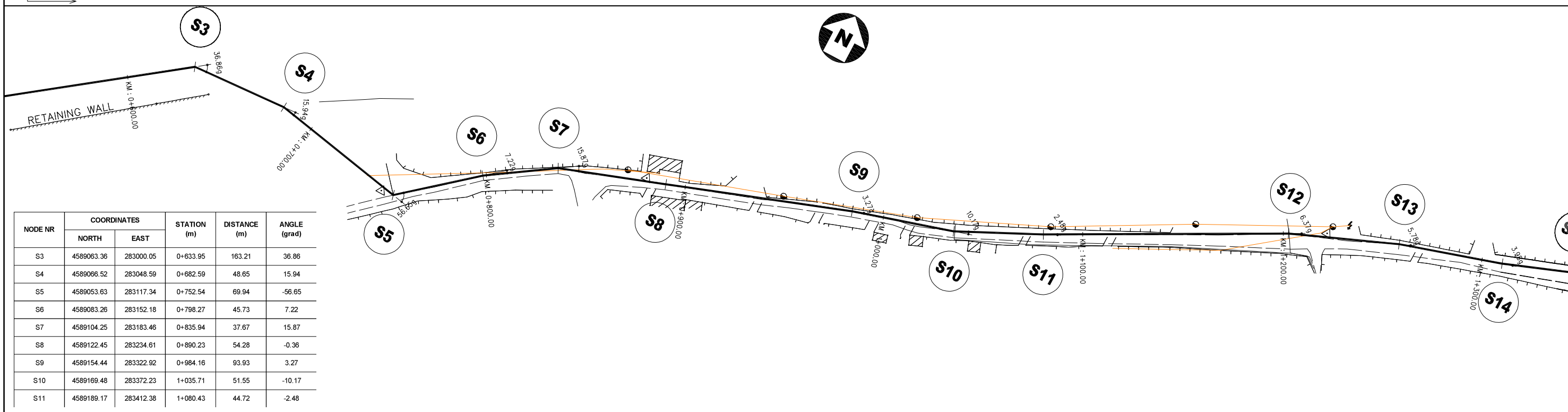
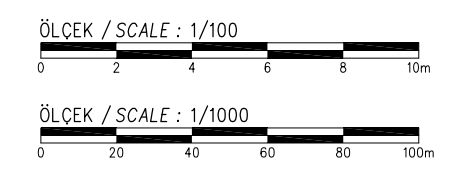
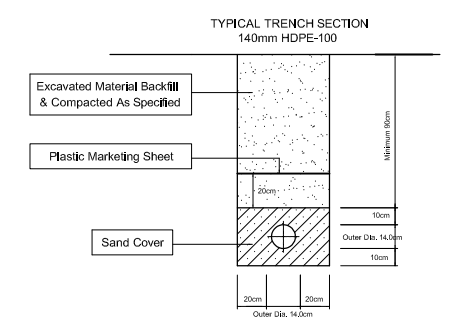


NODE NR	COORDINATES		STATION (m)	DISTANCE (m)	ANGLE (grad)
	NORTH	EAST			
0	4588734.54	282459.43	0+000.00		
S1	4588832.21	282644.45	0+209.22	209.22	-3.09
S2	4588965.35	282869.54	0+470.73	261.51	-7.00

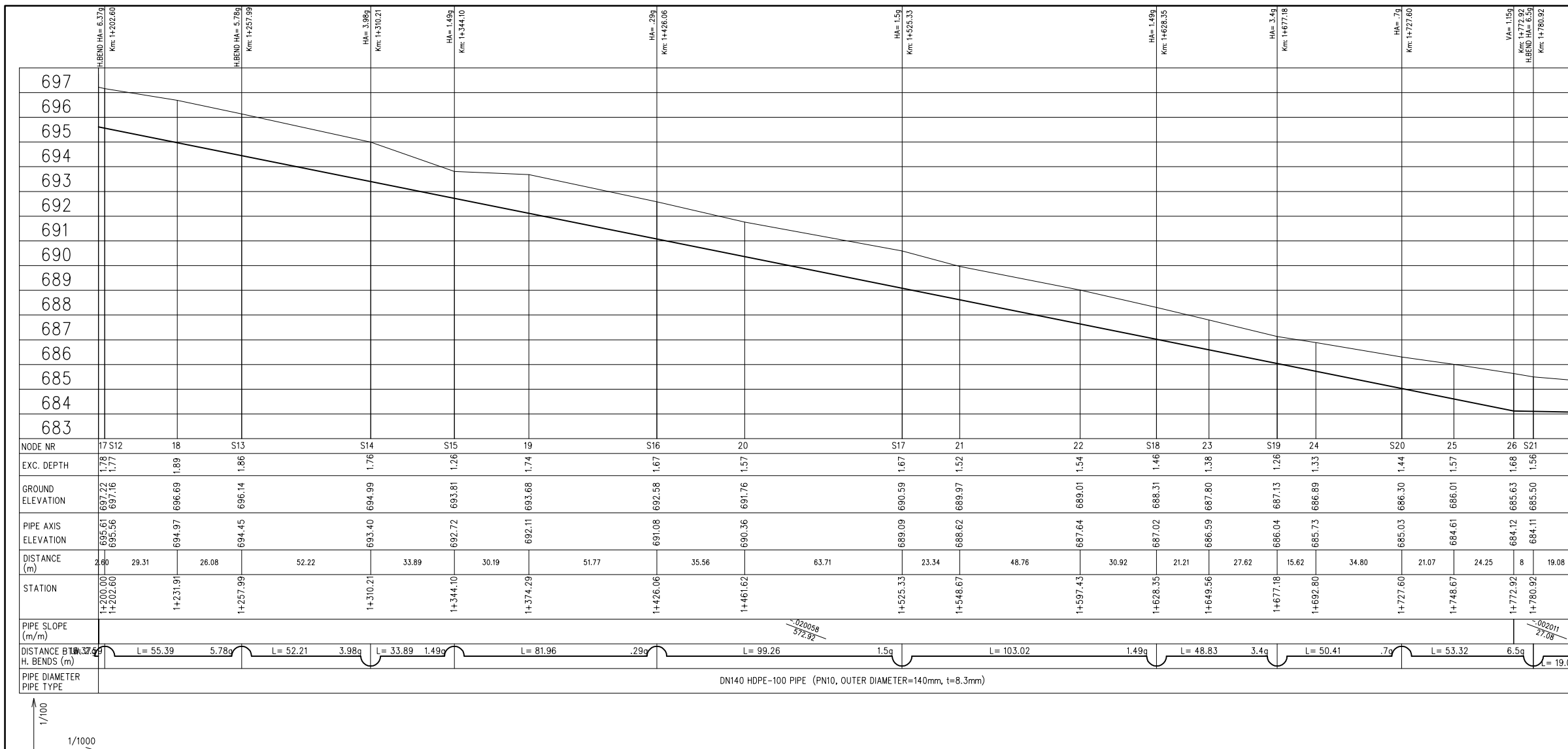
SPECIAL ASSISTANCE FOR PROJECT IMPLEMENTATION (SAPI) FOR THE PROVINCIAL CITIES WATER SUPPLY AND SEWERAGE PROJECT IN THE REPUBLIC OF AZERBAIJAN	AZERSU JOINT STOCK COMPANY, the Republic of Azerbaijan		Site :	Facility :	Title :	Scale of Drawing :	Category - City	Facility Code - Number
	Japan International Cooperation Agency (JICA), Japan		Gusar	Plan & Profile of TL from Gusar River Right Bank Water Source to Zone IV Serv.Res.	Between KM: 0+000.00 - 0+600.00	1/1000	SU-GUS-	09-05(01)
						Original Size of Paper : A1	Date : March 2010	Revision Number : Rev.0



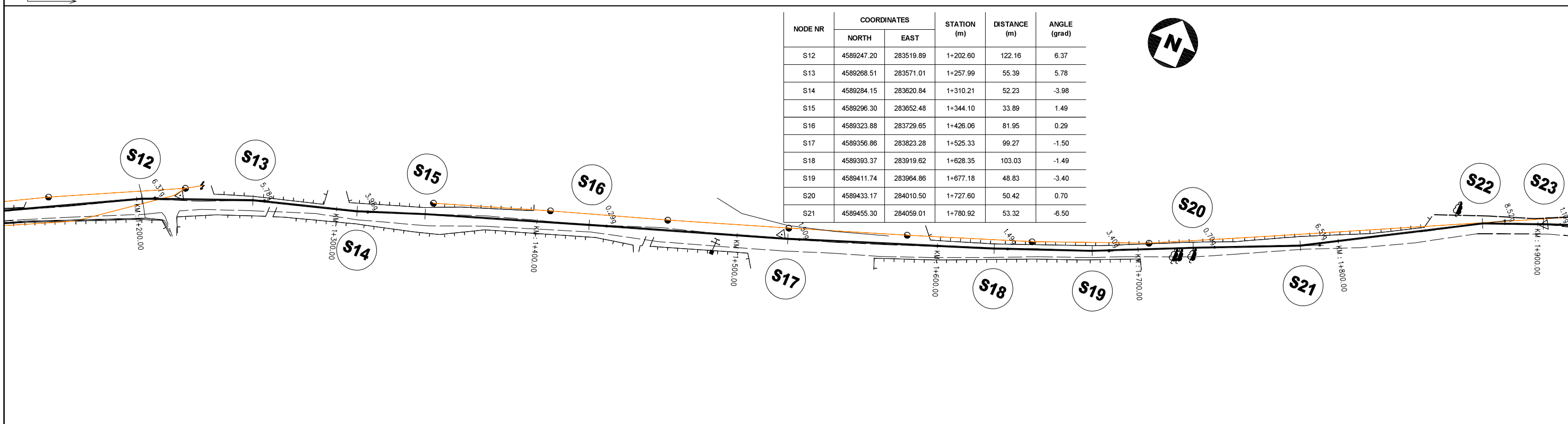
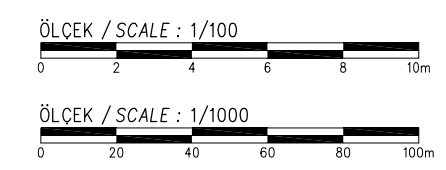
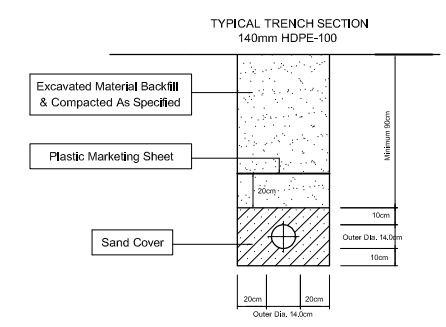
- LEGEND**
- AIR VALVE
  - WASHOUT VALVE
  - LINE VALVE
  - V. BEND = VERTICAL BEND
  - H. BEND = HORIZONTAL BEND
  - C. BEND = COMBINED BEND
  - VA = VERTICAL ANGLE (in grad)
  - HA = HORIZONTAL ANGLE (in grad)
  - CA = COMBINED ANGLE (in grad)
  - AV = AIR VALVE
  - WV = WASHOUT VALVE
  - LV = LINE VALVE



SPECIAL ASSISTANCE FOR PROJECT IMPLEMENTATION (SAPI) FOR THE PROVINCIAL CITIES WATER SUPPLY AND SEWERAGE PROJECT IN THE REPUBLIC OF AZERBAIJAN	AZERSU JOINT STOCK COMPANY, the Republic of Azerbaijan		Site :	Facility :	Title :	Scale of Drawing :	Category - City	Facility Code - Number
	Japan International Cooperation Agency (JICA), Japan		Gusar	Plan & Profile of TL from Gusar River Right Bank Water Source to Zone IV Serv.Res.	Between KM: 0+600.00 - 1+200.00	1/1000	SU-GUS-	09-05(02)
						Original Size of Paper : A1	Date	Revision Number
							March 2010	Rev.0

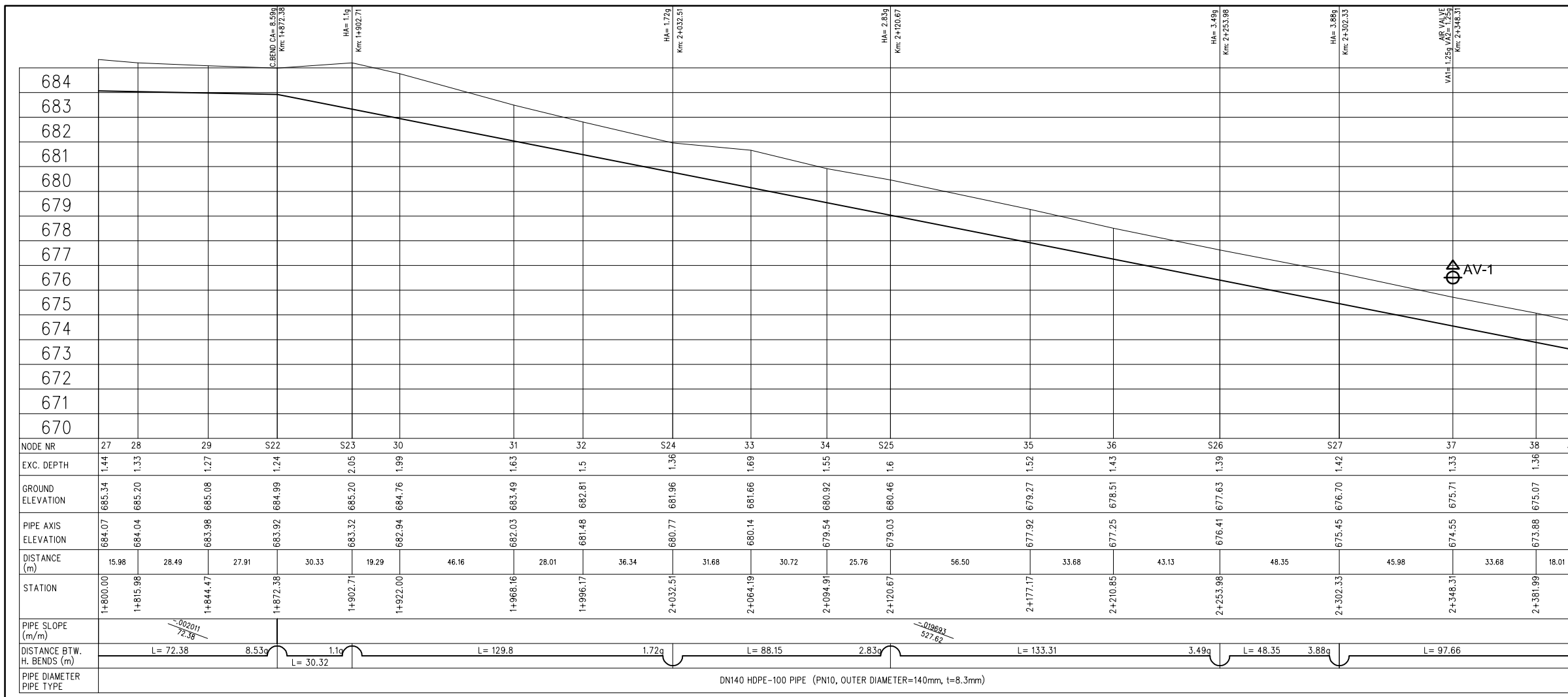


- LEGEND**
- AIR VALVE
  - WASHOUT VALVE
  - LINE VALVE
  - V. BEND = VERTICAL BEND
  - H. BEND = HORIZONTAL BEND
  - C. BEND = COMBINED BEND
  - VA = VERTICAL ANGLE (in grad)
  - HA = HORIZONTAL ANGLE (in grad)
  - CA = COMBINED ANGLE (in grad)
  - AV = AIR VALVE
  - WV = WASHOUT VALVE
  - LV = LINE VALVE



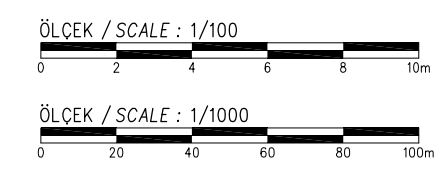
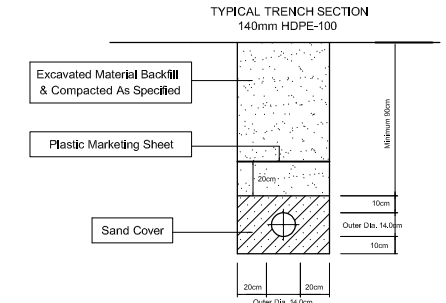
SPECIAL ASSISTANCE FOR PROJECT IMPLEMENTATION (SAPI) FOR THE PROVINCIAL CITIES WATER SUPPLY AND SEWERAGE PROJECT IN THE REPUBLIC OF AZERBAIJAN	AZERSU JOINT STOCK COMPANY, the Republic of Azerbaijan	Site :	Facility :	Title :	Scale of Drawing :	Category - City	Facility Code - Number
	Japan International Cooperation Agency (JICA), Japan	Gusar	Plan & Profile of TL from Gusar River Right Bank Water Source to Zone IV Serv.Res.	Between KM: 1+200.00 - 1+800.00	1/1000	SU-GUS-	09-05(03)
					Original Size of Paper : A1	Date	Revision Number
						March 2010	Rev.0



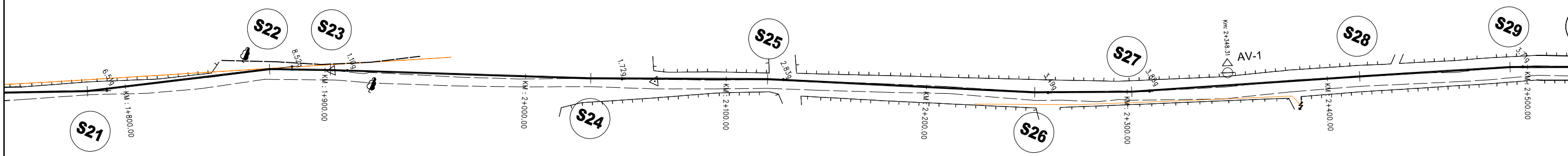


**LEGEND**

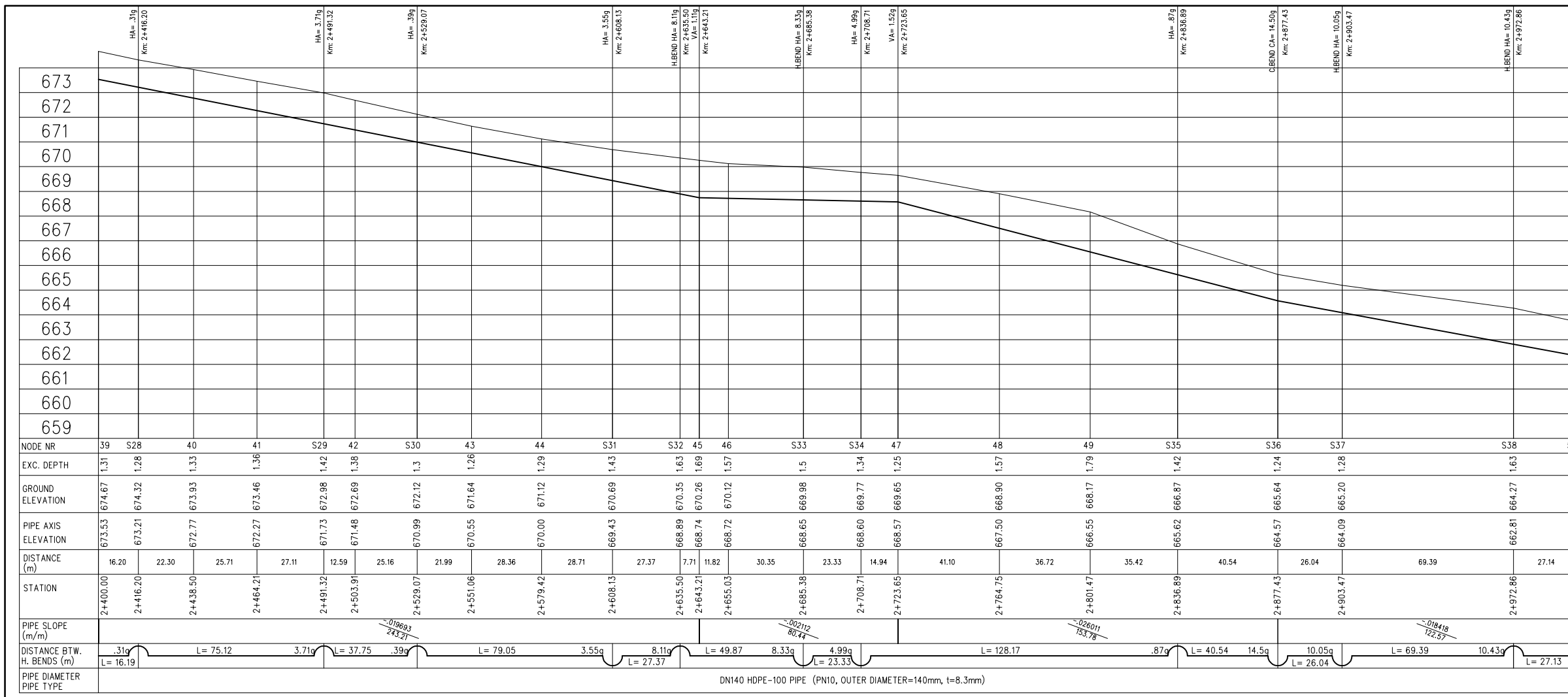
	AIR VALVE		V. BEND = VERTICAL BEND
	WASHOUT VALVE		H. BEND = HORIZONTAL BEND
	LINE VALVE		C. BEND = COMBINED BEND
			VA = VERTICAL ANGLE (in grad)
			HA = HORIZONTAL ANGLE (in grad)
			CA = COMBINED ANGLE (in grad)
			AV = AIR VALVE
			WV = WASHOUT VALVE
			LV = LINE VALVE



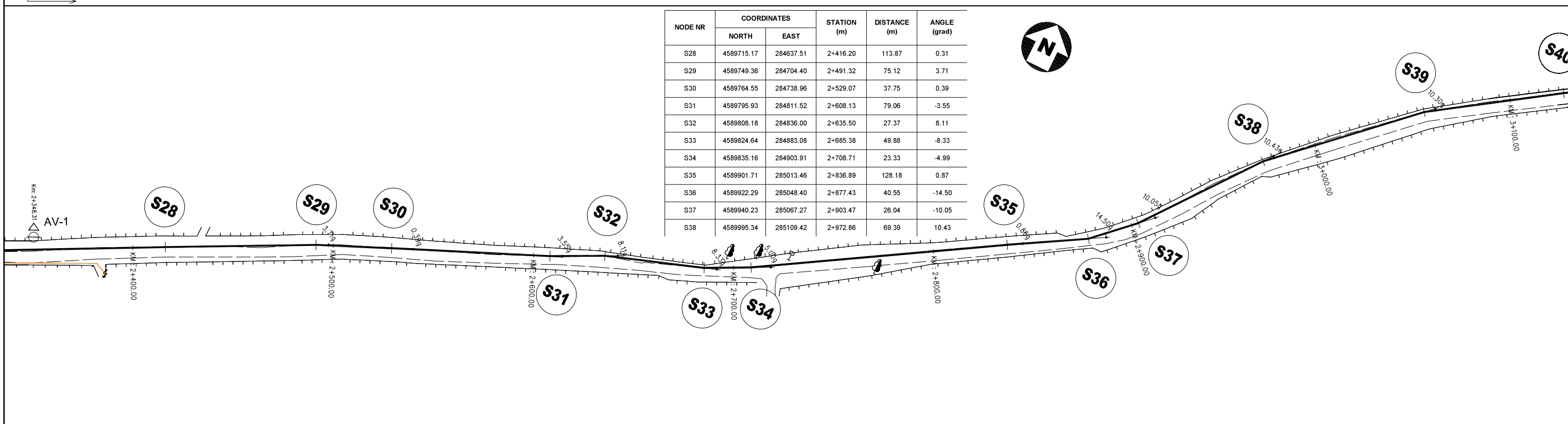
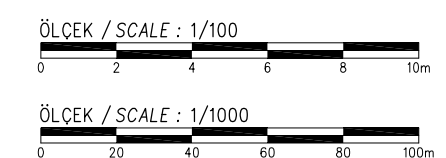
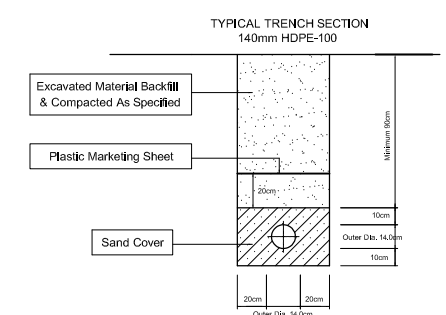
NODE NR	COORDINATES		STATION (m)	DISTANCE (m)	ANGLE (grad)
	NORTH	EAST			
S22	4589501.56	284137.91	1+872.38	91.46	8.53
S23	4589513.27	284165.89	1+902.71	30.33	1.10
S24	4589561.31	284286.47	2+032.51	129.80	-1.72
S25	4589596.14	284367.46	2+120.67	88.16	2.83
S26	4589643.30	284492.15	2+253.98	133.31	-3.49
S27	4589662.86	284536.37	2+302.33	48.35	-3.88



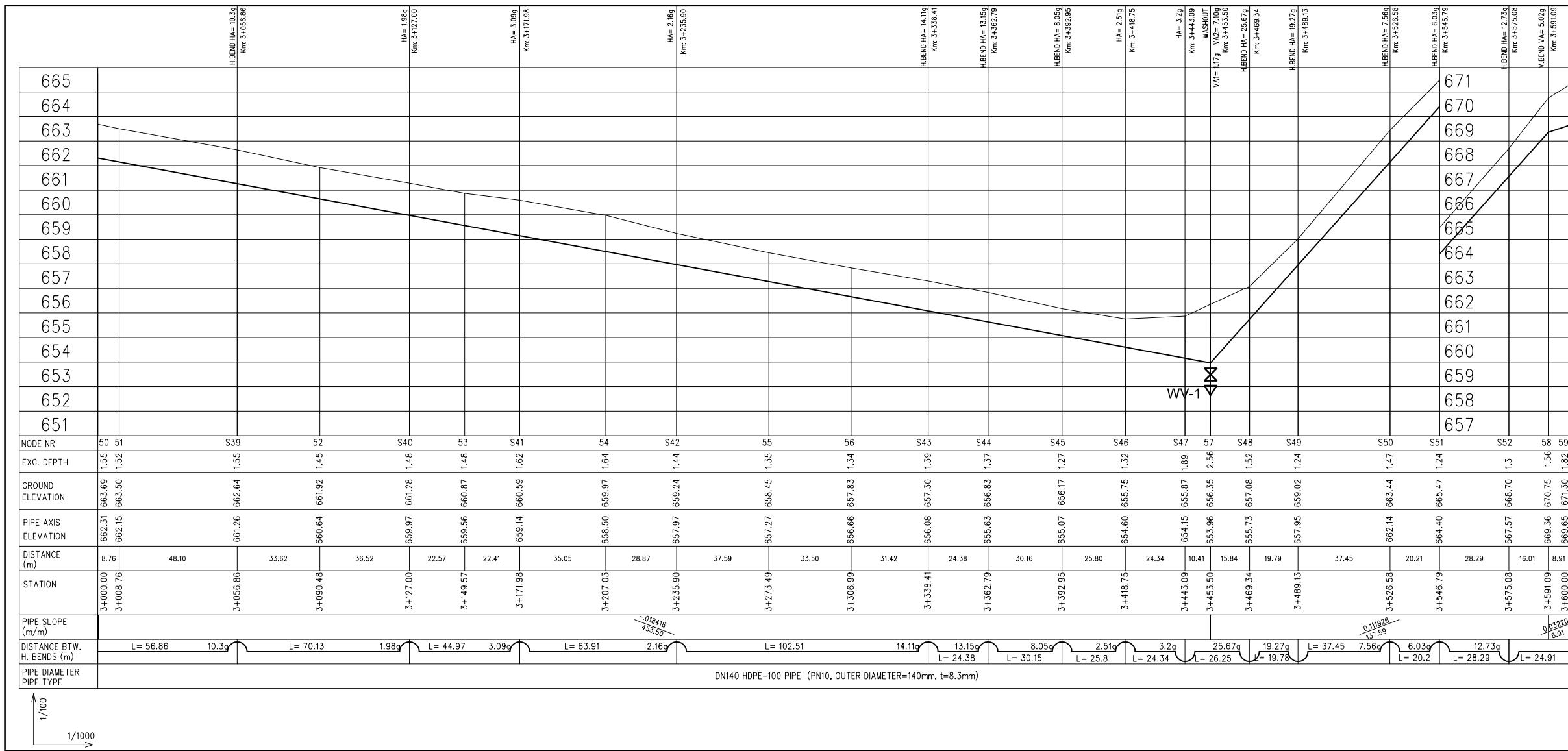
SPECIAL ASSISTANCE FOR PROJECT IMPLEMENTATION (SAPI) FOR THE PROVINCIAL CITIES WATER SUPPLY AND SEWERAGE PROJECT IN THE REPUBLIC OF AZERBAIJAN	AZERSU JOINT STOCK COMPANY, the Republic of Azerbaijan		Site :	Facility :	Title :	Scale of Drawing :	Category - City	Facility Code - Number
	Japan International Cooperation Agency (JICA), Japan		Gusar	Plan & Profile of TL from Gusar River Right Bank Water Source to Zone IV Serv.Res.	Between KM: 1+800.00 - 2+400.00	1/1000	SU-GUS-	09-05(04)
						Original Size of Paper : A1	Date	Revision Number
							March 2010	Rev.0



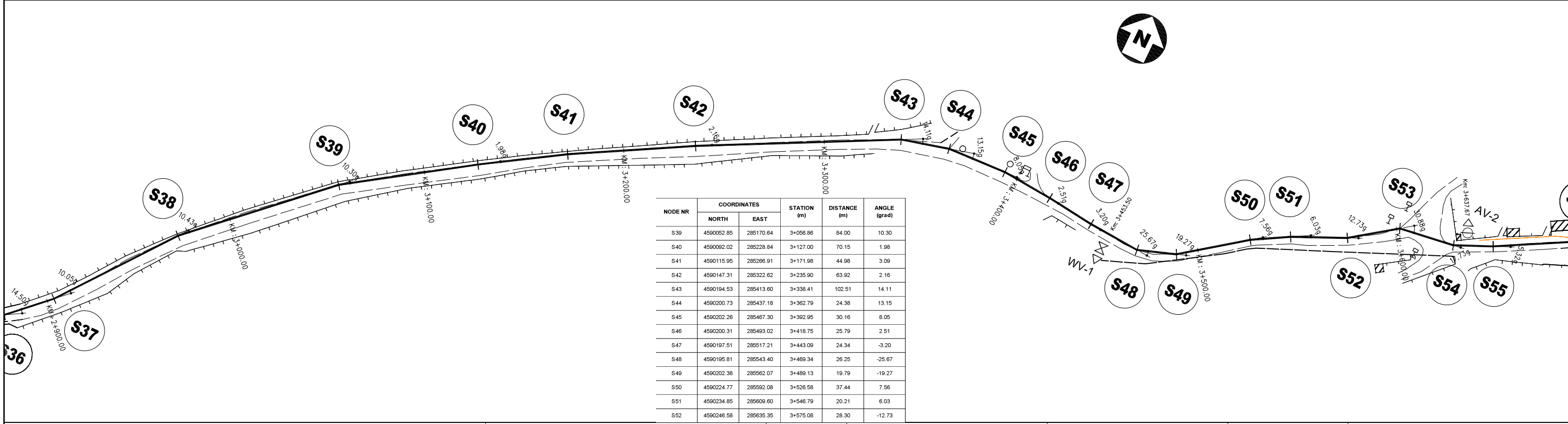
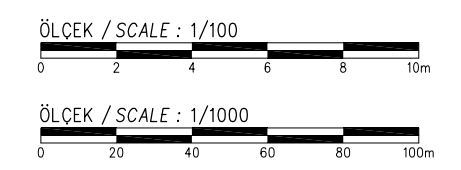
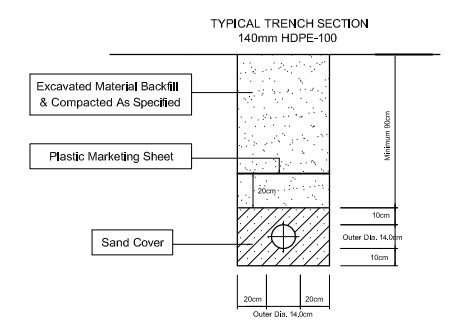
- LEGEND**
- ⊕ AIR VALVE
  - ⊕ WASHOUT VALVE
  - ⊕ LINE VALVE
  - V. BEND = VERTICAL BEND
  - H. BEND = HORIZONTAL BEND
  - C. BEND = COMBINED BEND
  - VA = VERTICAL ANGLE (in grad)
  - HA = HORIZONTAL ANGLE (in grad)
  - CA = COMBINED ANGLE (in grad)
  - AV = AIR VALVE
  - WV = WASHOUT VALVE
  - LV = LINE VALVE



SPECIAL ASSISTANCE FOR PROJECT IMPLEMENTATION (SAPI) FOR THE PROVINCIAL CITIES WATER SUPPLY AND SEWERAGE PROJECT IN THE REPUBLIC OF AZERBAIJAN	AZERSU JOINT STOCK COMPANY, the Republic of Azerbaijan	Site : Gusar	Facility : Plan & Profile of TL from Gusar River Right Bank Water Source to Zone IV Serv.Res.	Title : Between KM: 2+400.00 - 3+000.00	Scale of Drawing : 1/1000	Category - City : SU-GUS-	Facility Code - Number : 09-05(05)
	Japan International Cooperation Agency (JICA), Japan				Original Size of Paper : A1	Date : March 2010	Revision Number : Rev.0

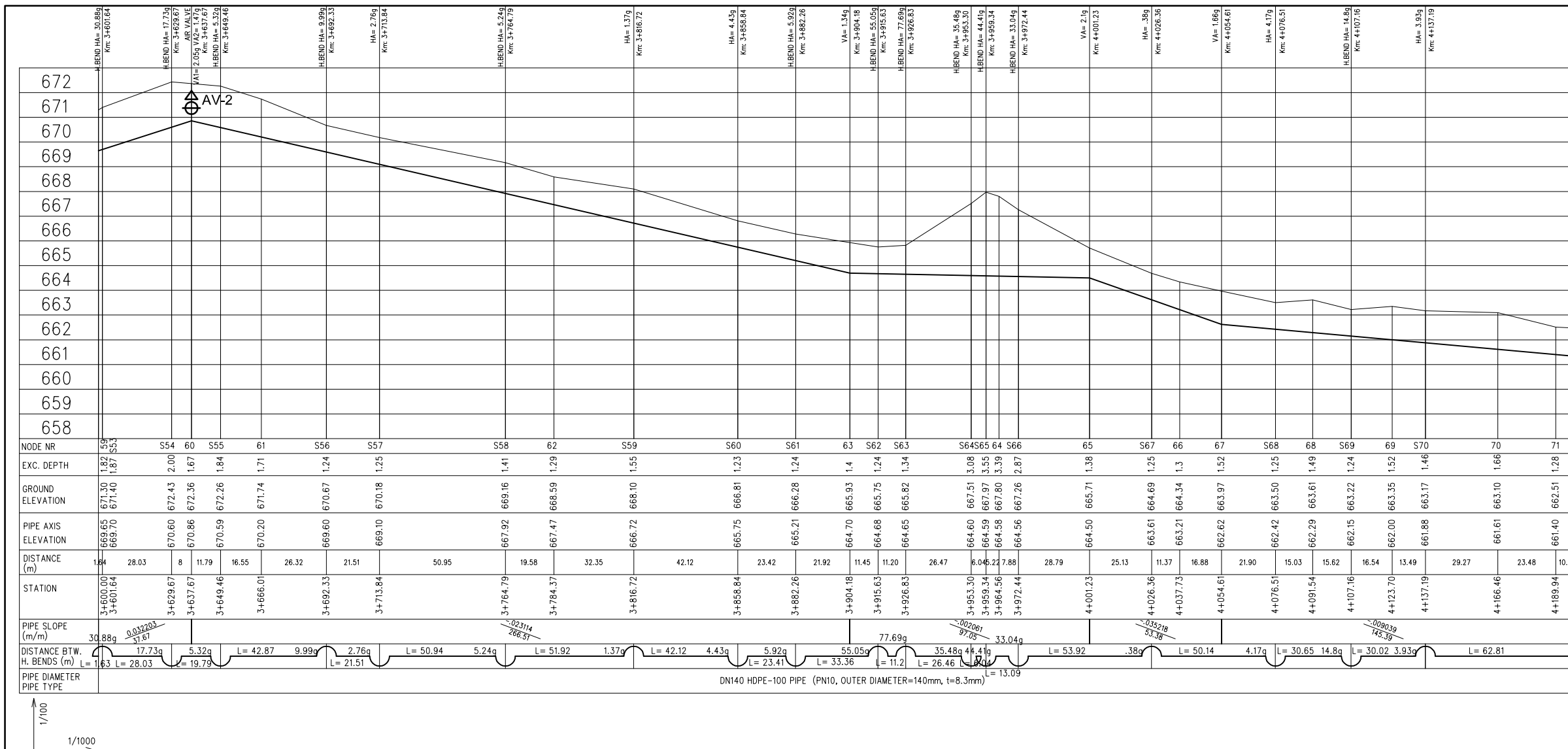


- LEGEND**
- ⊕ AIR VALVE
  - ⊕ WASHOUT VALVE
  - ⊕ LINE VALVE
  - V. BEND = VERTICAL BEND
  - H. BEND = HORIZONTAL BEND
  - C. BEND = COMBINED BEND
  - VA = VERTICAL ANGLE (in grad)
  - HA = HORIZONTAL ANGLE (in grad)
  - CA = COMBINED ANGLE (in grad)
  - AV = AIR VALVE
  - WV = WASHOUT VALVE
  - LV = LINE VALVE

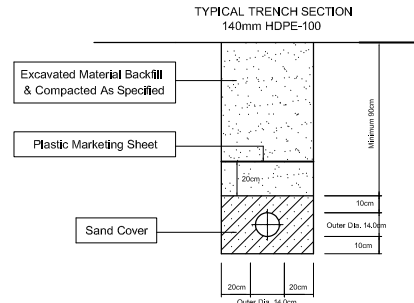


NODE NR	COORDINATES		STATION (m)	DISTANCE (m)	ANGLE (grad)
	NORTH	EAST			
S39	4590052.85	285170.64	3+056.86	84.00	10.30
S40	4590092.02	285228.84	3+127.00	70.15	1.98
S41	4590115.95	285266.91	3+171.98	44.98	3.09
S42	4590147.31	285322.62	3+235.90	63.92	2.16
S43	4590194.53	285413.80	3+338.41	102.51	14.11
S44	4590200.73	285437.18	3+362.79	24.38	13.15
S45	4590202.28	285467.30	3+392.95	30.16	8.05
S46	4590200.31	285493.02	3+418.75	25.79	2.51
S47	4590197.51	285517.21	3+443.09	24.34	-3.20
S48	4590195.81	285543.40	3+469.34	26.25	-25.67
S49	4590202.38	285562.07	3+489.13	19.79	-19.27
S50	4590224.77	285592.08	3+526.58	37.44	7.56
S51	4590234.85	285609.80	3+546.79	20.21	6.03
S52	4590246.58	285635.35	3+575.08	28.30	-12.73

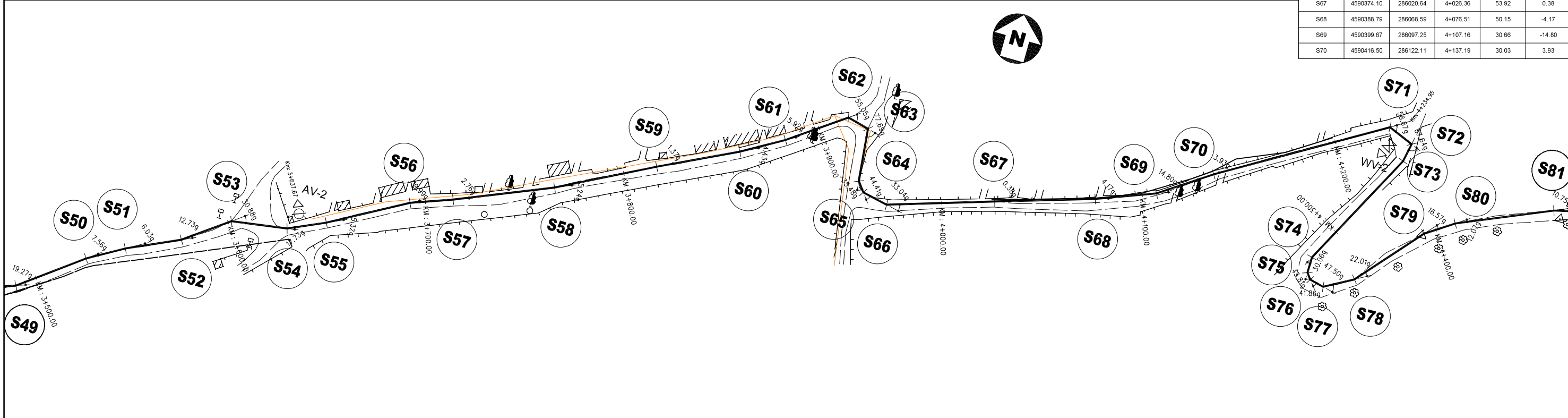
SPECIAL ASSISTANCE FOR PROJECT IMPLEMENTATION (SAPI) FOR THE PROVINCIAL CITIES WATER SUPPLY AND SEWERAGE PROJECT IN THE REPUBLIC OF AZERBAIJAN	AZERSU JOINT STOCK COMPANY, the Republic of Azerbaijan	Site :	Facility :	Title :	Scale of Drawing :	Category - City	Facility Code - Number
	Japan International Cooperation Agency (JICA), Japan	Gusar	Plan & Profile of TL from Gusar River Right Bank Water Source to Zone IV Serv.Res.	Between KM: 3+000.00 - 3+600.00	1/1000 Original Size of Paper : A1	March 2010	SU-GUS-09-05(06) Revision Number Rev.0



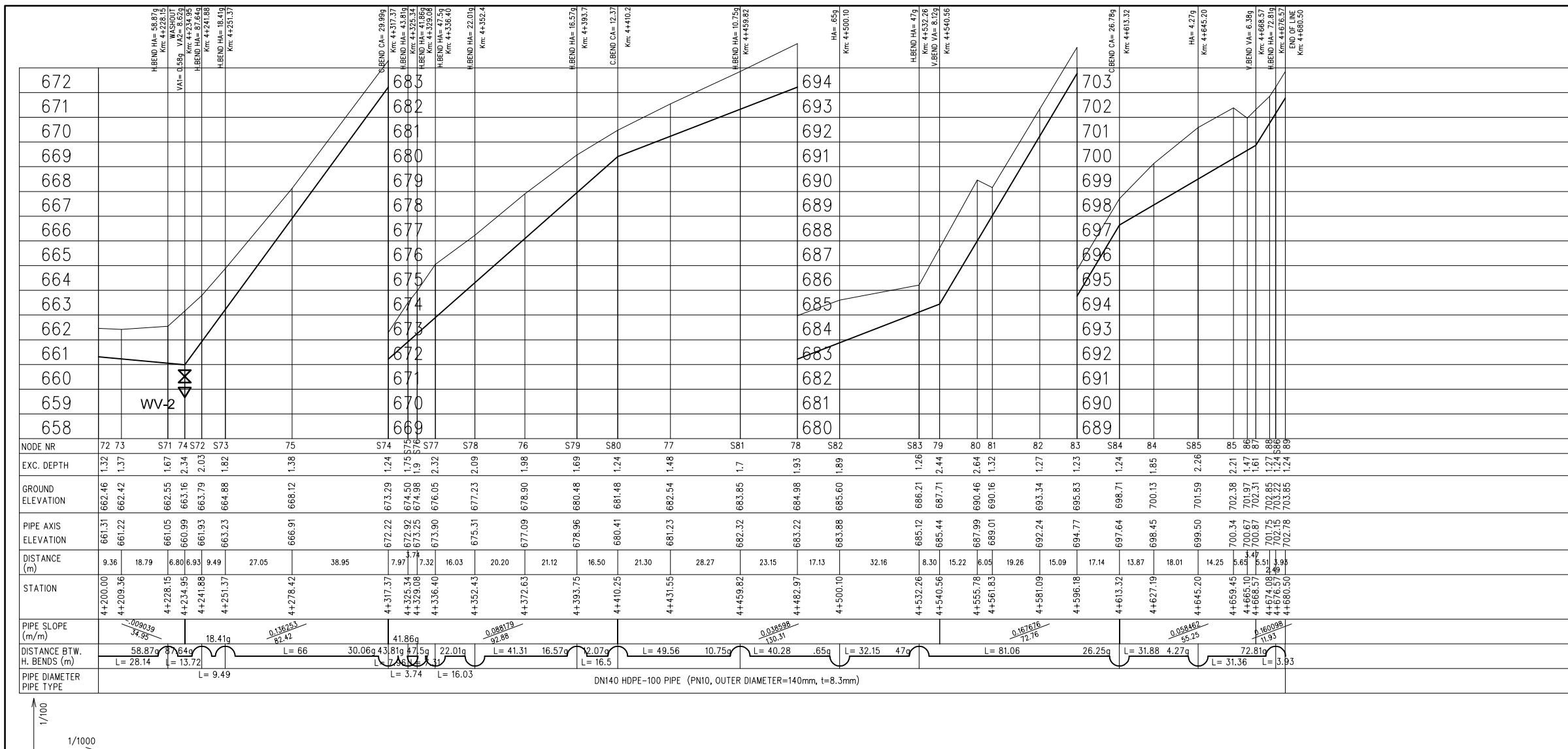
- LEGEND**
- ⊕ AIR VALVE
  - ⊗ WASHOUT VALVE
  - ⊗ LINE VALVE
  - V. BEND = VERTICAL BEND
  - H. BEND = HORIZONTAL BEND
  - C. BEND = COMBINED BEND
  - VA = VERTICAL ANGLE (in grad)
  - HA = HORIZONTAL ANGLE (in grad)
  - CA = COMBINED ANGLE (in grad)
  - AV = AIR VALVE
  - WV = WASHOUT VALVE
  - LV = LINE VALVE



NODE NR	COORDINATES		STATION (m)	DISTANCE (m)	ANGLE (grad)
	NORTH	EAST			
S53	4590262.17	285656.84	3+601.64	26.55	30.88
S54	4590266.16	285684.59	3+629.67	28.04	-17.73
S55	4590274.24	285702.66	3+649.46	19.79	-5.32
S56	4590294.97	285740.18	3+692.33	42.86	9.99
S57	4590302.30	285760.40	3+713.84	21.51	-2.76
S58	4590321.72	285807.50	3+764.79	50.95	-5.24
S59	4590345.40	285853.73	3+816.72	51.94	1.37
S60	4590365.58	285891.62	3+858.84	42.12	-4.43
S61	4590375.45	285911.93	3+882.26	23.42	-5.92
S62	4590394.69	285939.19	3+915.63	33.37	55.05
S63	4590391.92	285950.04	3+926.83	11.20	77.69
S64	4590365.58	285952.69	3+953.30	26.47	-35.48
S65	4590360.80	285956.39	3+959.34	6.04	-44.41
S66	4590358.00	285969.17	3+972.44	13.09	-33.04
S67	4590374.10	286020.64	4+026.36	53.92	0.38
S68	4590388.79	286068.59	4+076.51	50.15	-4.17
S69	4590399.67	286097.25	4+107.16	30.66	-14.80
S70	4590416.50	286122.11	4+137.19	30.03	3.93

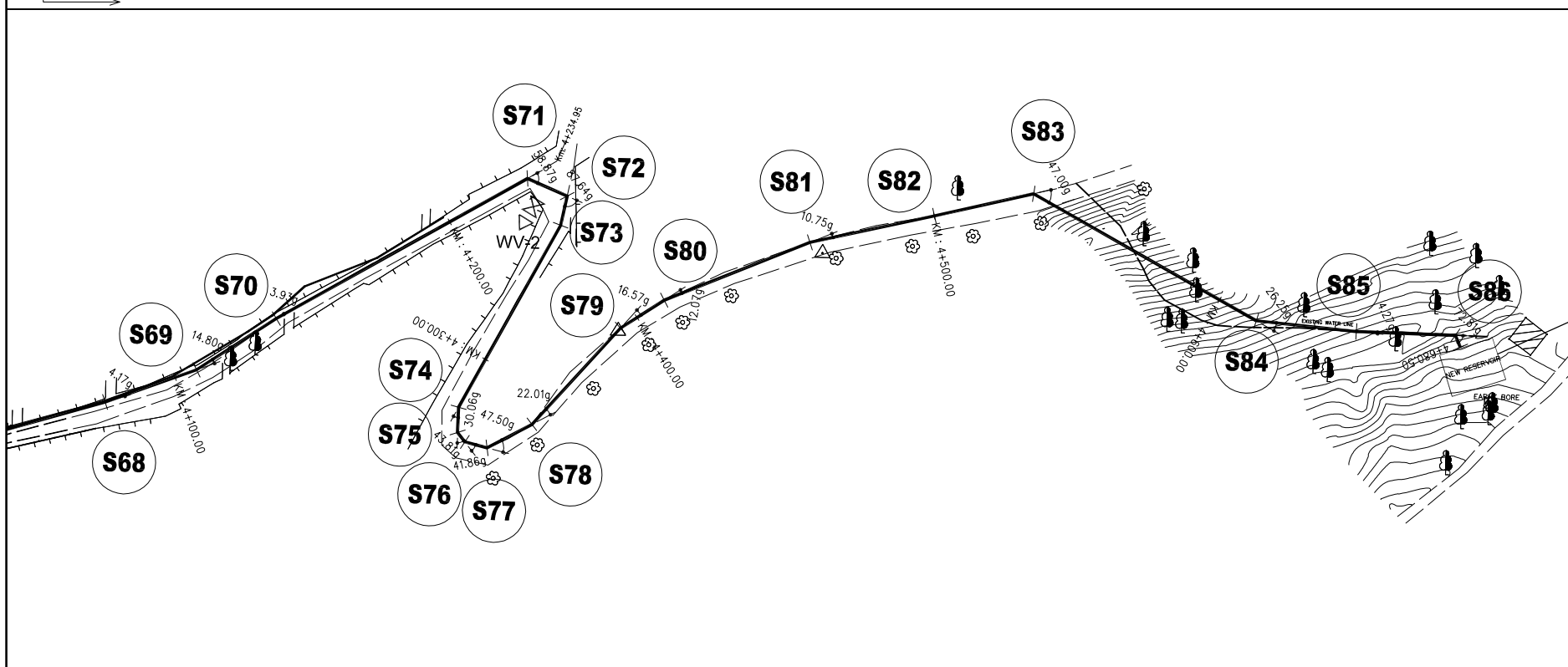
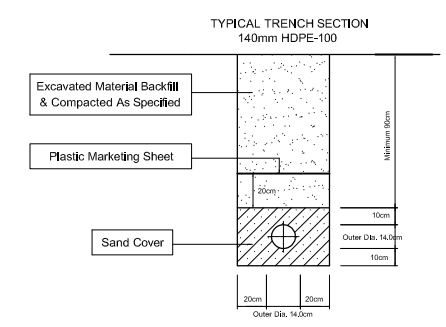


SPECIAL ASSISTANCE FOR PROJECT IMPLEMENTATION (SAPI) FOR THE PROVINCIAL CITIES WATER SUPPLY AND SEWERAGE PROJECT IN THE REPUBLIC OF AZERBAIJAN	AZERSU JOINT STOCK COMPANY, the Republic of Azerbaijan		Site :	Facility :	Title :	Scale of Drawing :	Category - City	Facility Code - Number
	Japan International Cooperation Agency (JICA), Japan		Gusar	Plan & Profile of TL from Gusar River Right Bank Water Source to Zone IV Serv.Res.	Between KM: 3+600.00 - 4+200.00	1/1000	SU-GUS-	09-05(07)
						Original Size of Paper : A1	Date	Revision Number
							March 2010	Rev.0



**LEGEND**

- V. BEND = VERTICAL BEND
- H. BEND = HORIZONTAL BEND
- C. BEND = COMBINED BEND
- VA = VERTICAL ANGLE (in grad)
- HA = HORIZONTAL ANGLE (in grad)
- CA = COMBINED ANGLE (in grad)
- AV = AIR VALVE
- WV = WASHOUT VALVE
- LV = LINE VALVE



NODE NR	COORDINATES		STATION (m)	DISTANCE (m)	ANGLE (grad)
	NORTH	EAST			
S71	4590462.75	286200.44	4+228.15	90.96	58.87
S72	4590457.52	286213.13	4+241.88	13.73	87.64
S73	4590448.22	286211.28	4+251.37	9.48	18.41
S74	4590389.87	286180.43	4+317.37	66.00	-30.06
S75	4590381.90	286180.32	4+325.34	7.97	-43.81
S76	4590378.98	286182.66	4+329.08	3.75	-41.86
S77	4590377.24	286189.77	4+336.40	7.32	-47.50
S78	4590385.02	286203.78	4+352.43	16.03	-22.01
S79	4590416.13	286230.97	4+393.75	41.32	16.57
S80	4590425.34	286244.66	4+410.25	16.50	12.07
S81	4590444.77	286290.27	4+459.82	49.57	10.75
S82	4590454.11	286329.45	4+500.10	40.29	-0.65
S83	4590461.88	286360.66	4+532.26	32.16	47.00
S84	4590423.43	286432.02	4+613.32	81.06	-26.25
S85	4590420.83	286463.79	4+645.20	31.88	-4.27
S86	4590420.37	286495.16	4+676.57	31.37	72.81
89	4590416.65	286496.79	4+680.50	3.93	

SPECIAL ASSISTANCE FOR PROJECT IMPLEMENTATION (SAPI) FOR THE PROVINCIAL CITIES WATER SUPPLY AND SEWERAGE PROJECT IN THE REPUBLIC OF AZERBAIJAN	AZERSU JOINT STOCK COMPANY, the Republic of Azerbaijan		Site :	Facility :	Title :	Scale of Drawing :	Category - City	Facility Code - Number
	Japan International Cooperation Agency (JICA), Japan		Gusar	Plan & Profile of TL from Gusar River Right Bank Water Source to Zone IV Serv.Res.	Between KM: 4+200.00 - 4+680.50	1/1000	SU-GUS-	09-05(08)
						Original Size of Paper : A1	Date	Revision Number
							March 2010	Rev.0