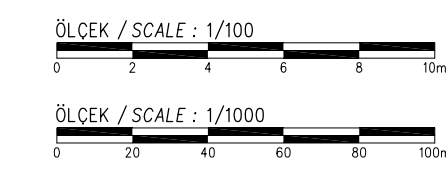
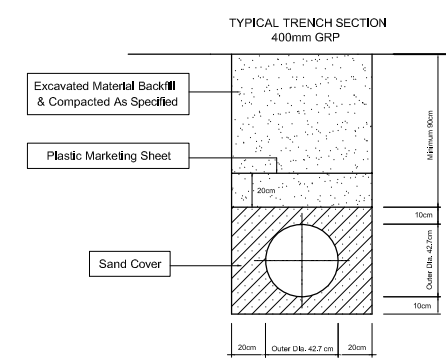
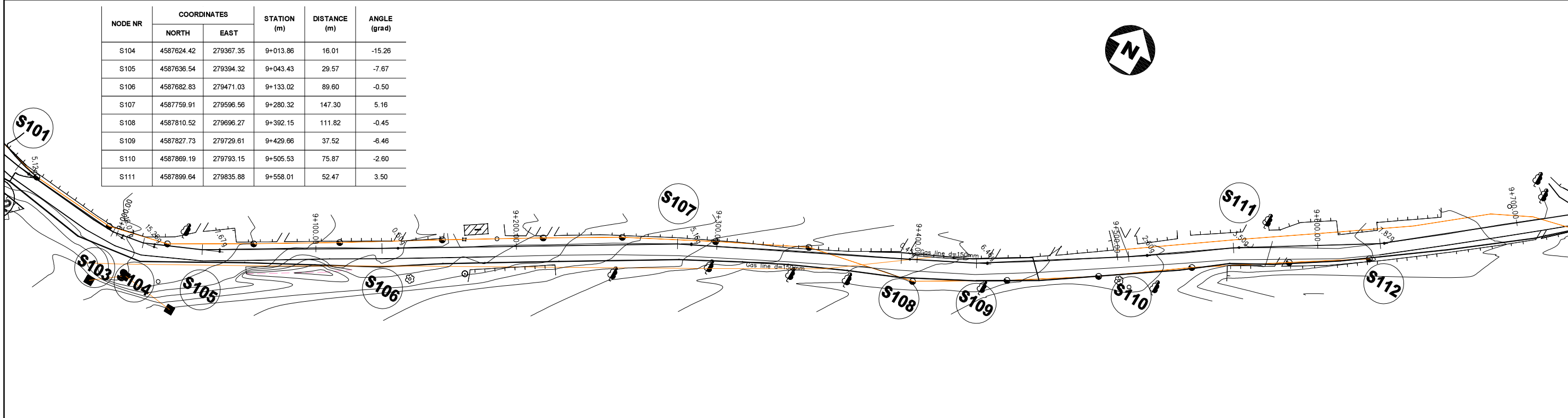


- LEGEND**
- AIR VALVE
 - WASHOUT VALVE
 - LINE VALVE
 - V. BEND = VERTICAL BEND
 - H. BEND = HORIZONTAL BEND
 - C. BEND = COMBINED BEND
 - VA = VERTICAL ANGLE (in grad)
 - HA = HORIZONTAL ANGLE (in grad)
 - CA = COMBINED ANGLE (in grad)
 - AV = AIR VALVE
 - WV = WASHOUT VALVE
 - LV = LINE VALVE

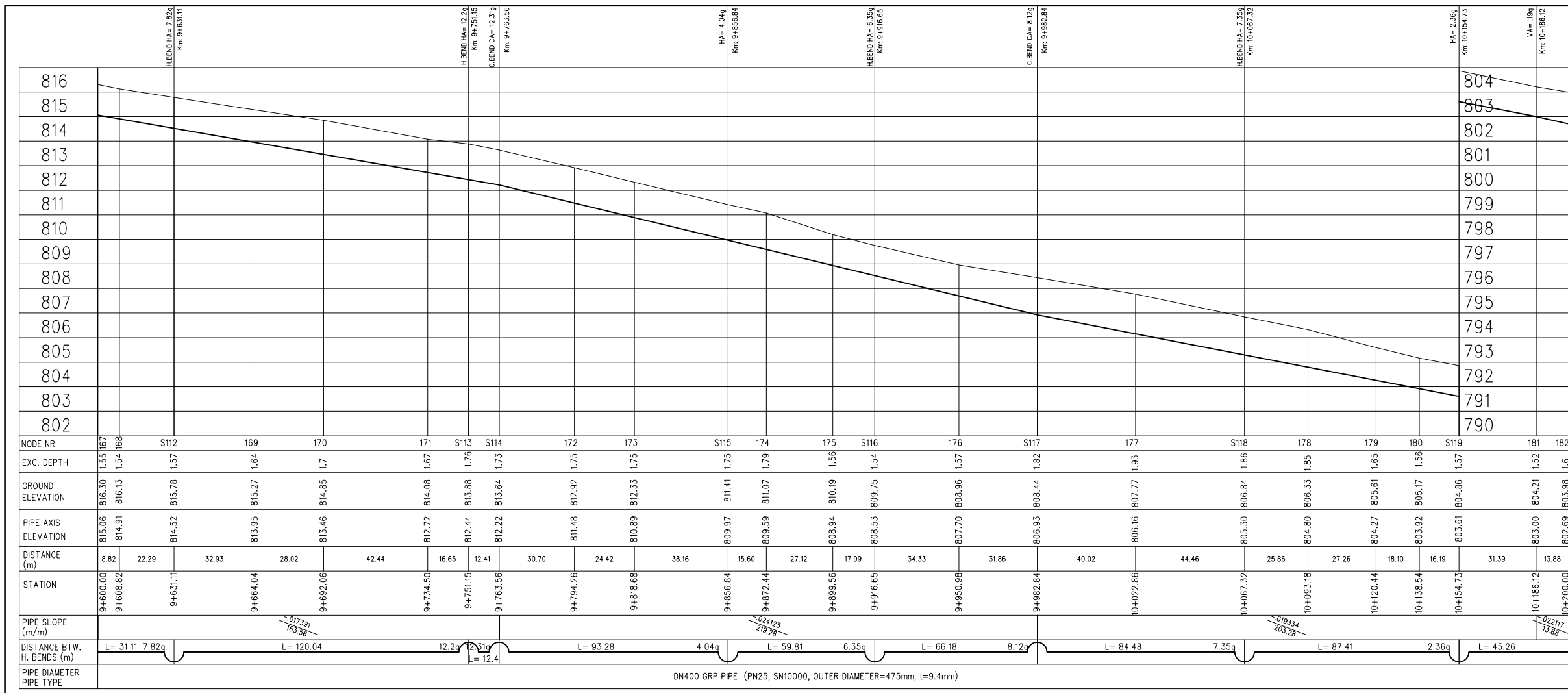


NODE NR	154	155	156	157	158	159	160	161	162	163	164	165	166	167
EXC. DEPTH	1.58	1.58	1.55	1.54	1.87	2.07	1.84	1.64	1.54	1.57	1.71	1.98	1.65	1.55
GROUND ELEVATION	829.07	828.80	828.44	826.60	825.53	825.09	824.10	823.18	821.46	820.92	820.52	817.91	817.13	816.30
PIPE AXIS ELEVATION	827.80	827.56	827.20	826.39	825.98	825.33	822.57	821.85	820.24	819.66	819.12	816.25	815.79	815.27
DISTANCE (m)	13.86	20.30	9.27	22.95	40.78	25.86	30.04	25.94	30.38	28.70	32.24	32.30	23.14	30.98
STATION	9+000.00	9+013.86	9+034.16	9+043.43	9+066.38	9+107.16	9+133.02	9+163.06	9+189.00	9+219.38	9+248.08	9+280.32	9+312.62	9+335.76
PIPE SLOPE (m/m)		-0.17446	-0.1476											
DISTANCE BTW. H. BENDS (m)	13.86	7.67	29.56	89.58	5.9	147.3	5.16	111.83	4.5	37.5	6.46	75.87	2.6	52.47
PIPE DIAMETER	DN400 GRP PIPE (PN25, SN10000, OUTER DIAMETER=475mm, t=9.4mm)													
PIPE TYPE														

NODE NR	COORDINATES		STATION (m)	DISTANCE (m)	ANGLE (grad)
	NORTH	EAST			
S104	4587624.42	279367.35	9+013.86	16.01	-15.26
S105	4587636.54	279394.32	9+043.43	29.57	-7.67
S106	4587682.83	279471.03	9+133.02	89.60	-0.50
S107	4587759.91	279596.56	9+280.32	147.30	5.16
S108	4587810.52	279696.27	9+392.15	111.82	-0.45
S109	4587827.73	279729.61	9+429.66	37.52	-6.46
S110	4587869.19	279793.15	9+505.53	75.87	-2.60
S111	4587899.64	279835.88	9+558.01	52.47	3.50

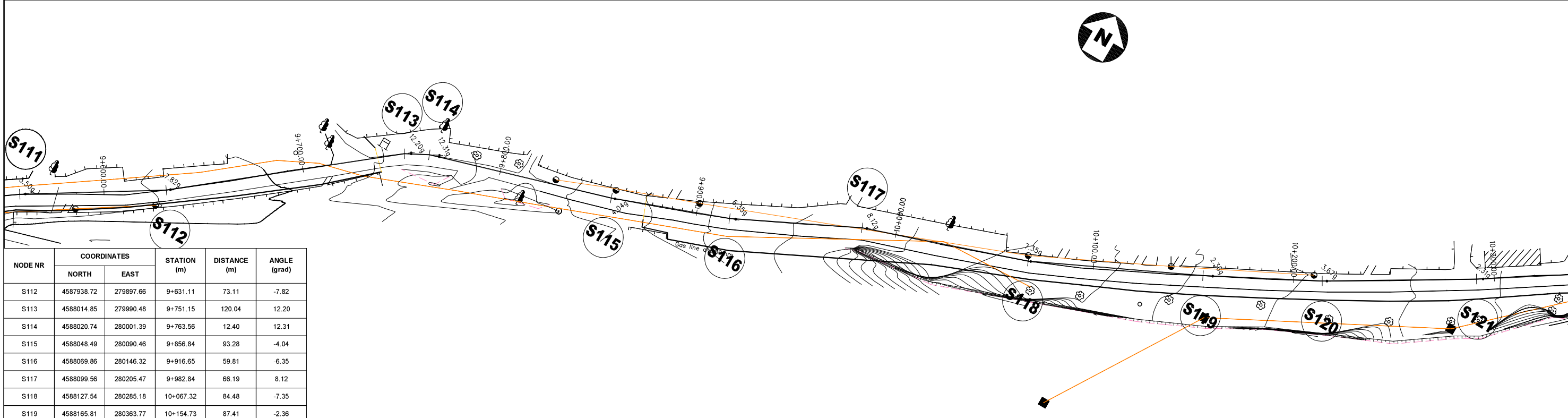
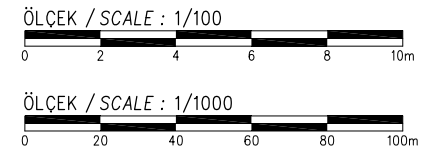
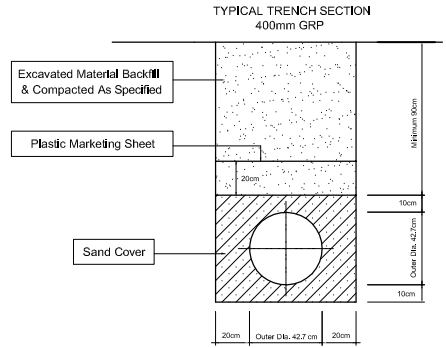


SPECIAL ASSISTANCE FOR PROJECT IMPLEMENTATION (SAPI) FOR THE PROVINCIAL CITIES WATER SUPPLY AND SEWERAGE PROJECT IN THE REPUBLIC OF AZERBAIJAN	AZERSU JOINT STOCK COMPANY, the Republic of Azerbaijan		Site :	Facility :	Title :	Scale of Drawing :	Category - City	Facility Code - Number
	Japan International Cooperation Agency (JICA), Japan		Gusar	Plan & Profile of TL From Gusar River Left Bank Water Source to Zone I Serv. Res.	Between KM: 9+000.00 - 9+600.00	1/1000	SU-GUS-	09-02(16)
						Original Size of Paper : A1	Date	Revision Number
							March 2010	Rev.0



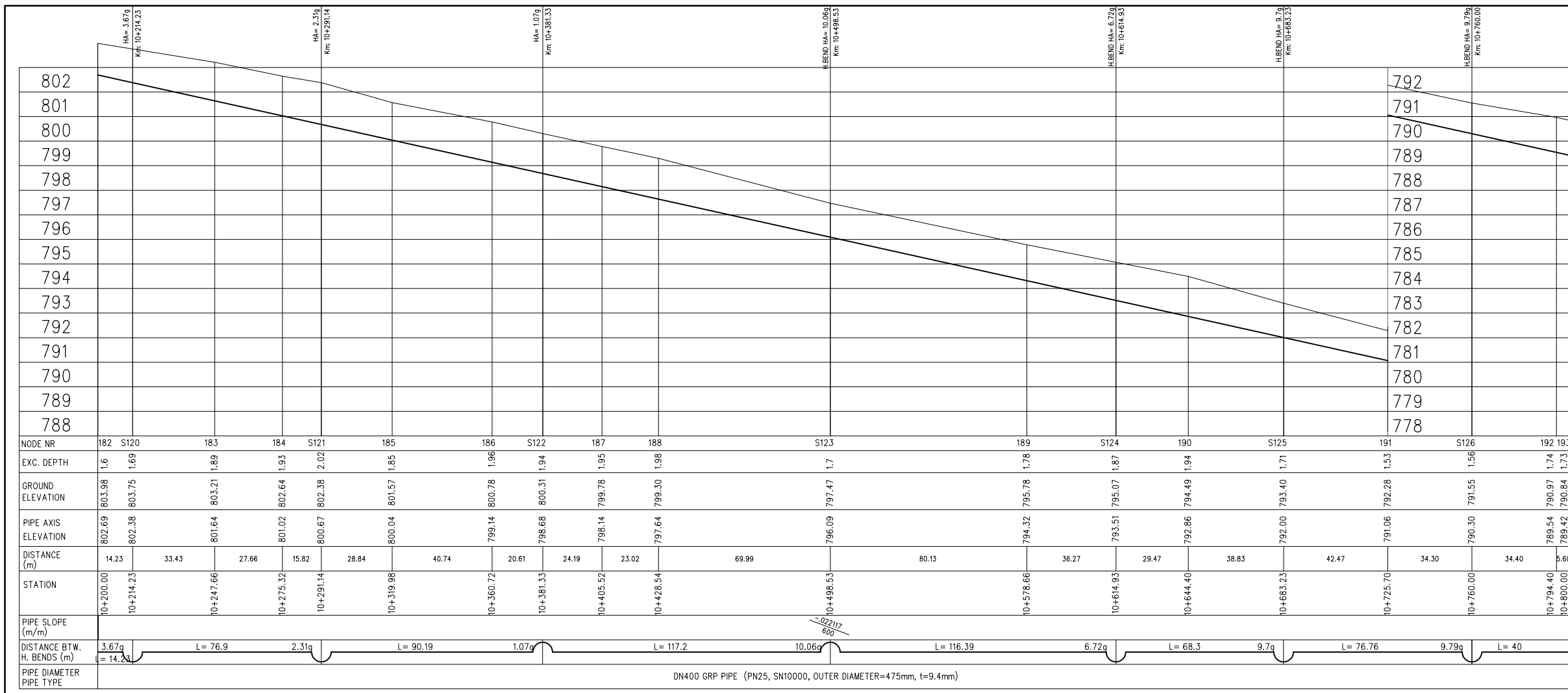
LEGEND

	AIR VALVE		V. BEND = VERTICAL BEND
	WASHOUT VALVE		H. BEND = HORIZONTAL BEND
	LINE VALVE		C. BEND = COMBINED BEND
			VA = VERTICAL ANGLE (in grad)
			HA = HORIZONTAL ANGLE (in grad)
			CA = COMBINED ANGLE (in grad)
			AV = AIR VALVE
			WV = WASHOUT VALVE
			LV = LINE VALVE

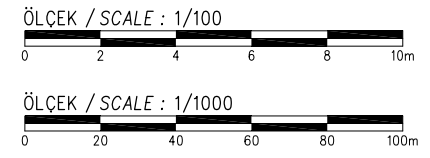
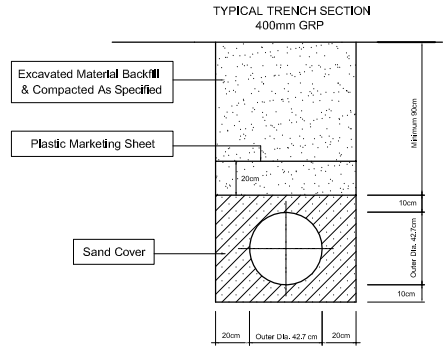


NODE NR	COORDINATES		STATION (m)	DISTANCE (m)	ANGLE (grad)
	NORTH	EAST			
S112	4587938.72	279897.66	9+631.11	73.11	-7.82
S113	4588014.85	279990.48	9+751.15	120.04	12.20
S114	4588020.74	280001.39	9+763.56	12.40	12.31
S115	4588048.49	280090.46	9+856.84	93.28	-4.04
S116	4588069.86	280146.32	9+916.65	59.81	-6.35
S117	4588099.56	280205.47	9+982.84	66.19	8.12
S118	4588127.54	280285.18	10+067.32	84.48	-7.35
S119	4588165.81	280363.77	10+154.73	87.41	-2.36

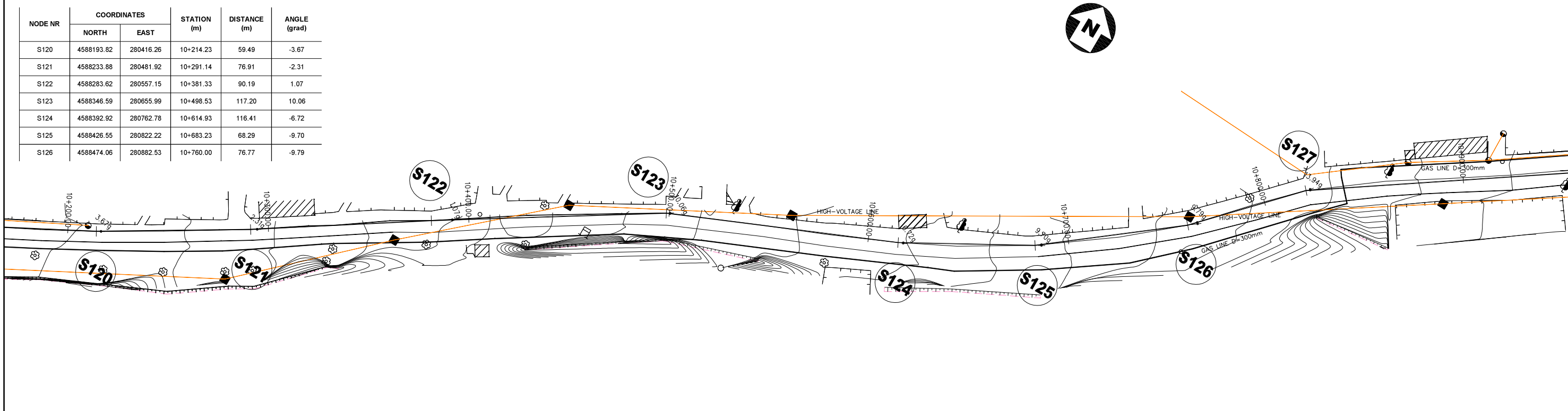
SPECIAL ASSISTANCE FOR PROJECT IMPLEMENTATION (SAPI) FOR THE PROVINCIAL CITIES WATER SUPPLY AND SEWERAGE PROJECT IN THE REPUBLIC OF AZERBAIJAN	AZERSU JOINT STOCK COMPANY, the Republic of Azerbaijan	Site :	Facility :	Title :	Scale of Drawing :	Category - City	Facility Code - Number
	Japan International Cooperation Agency (JICA), Japan	Gusar	Plan & Profile of TL From Gusar River Left Bank Water Source to Zone I Serv. Res.	Between KM: 9+600.00 - 10+200.00	1/1000	SU-GUS-	09-02(17)
					Original Size of Paper : A1	Date	Revision Number
						March 2010	Rev.0



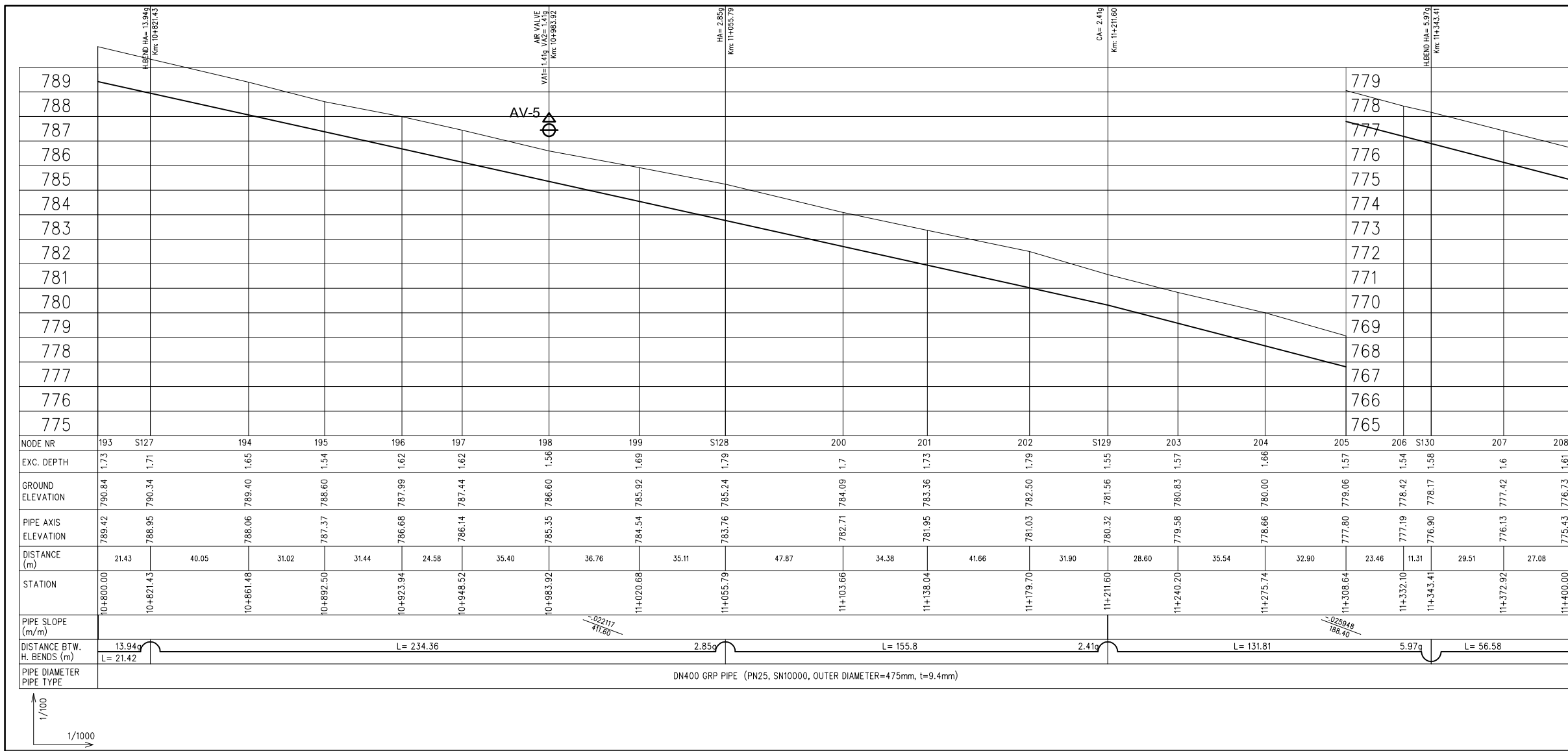
- LEGEND**
- AIR VALVE
 - H. BEND = HORIZONTAL BEND
 - WASHOUT VALVE
 - C. BEND = COMBINED BEND
 - LINE VALVE
 - VA = VERTICAL ANGLE (in grad)
 - HA = HORIZONTAL ANGLE (in grad)
 - CA = COMBINED ANGLE (in grad)
 - AV = AIR VALVE
 - WV = WASHOUT VALVE
 - LV = LINE VALVE



NODE NR	COORDINATES		STATION (m)	DISTANCE (m)	ANGLE (grad)
	NORTH	EAST			
S120	4588193.82	280416.26	10+214.23	59.49	-3.67
S121	4588233.98	280481.92	10+291.14	76.91	-2.31
S122	4588283.62	280557.15	10+381.33	90.19	1.07
S123	4588346.59	280655.99	10+498.53	117.20	10.06
S124	4588392.92	280762.78	10+614.93	116.41	-6.72
S125	4588426.55	280822.22	10+683.23	68.29	-9.70
S126	4588474.06	280882.53	10+760.00	76.77	-9.79

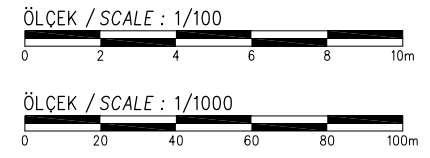
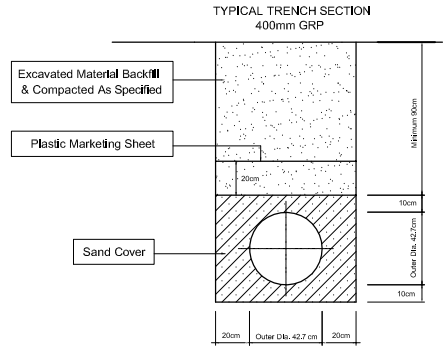


SPECIAL ASSISTANCE FOR PROJECT IMPLEMENTATION (SAPI) FOR THE PROVINCIAL CITIES WATER SUPPLY AND SEWERAGE PROJECT IN THE REPUBLIC OF AZERBAIJAN	AZERSU JOINT STOCK COMPANY, the Republic of Azerbaijan Japan International Cooperation Agency (JICA), Japan	Site :	Facility :	Title :	Scale of Drawing :	Category - City	Facility Code - Number
		Gusar	Plan & Profile of TL From Gusar River Left Bank Water Source to Zone I Serv. Res.	Between KM: 10+200.00 - 10+800.00	1/1000 Original Size of Paper : A1	SU-GUS-	09-02(18)
						Date	Revision Number
						March 2010	Rev.0

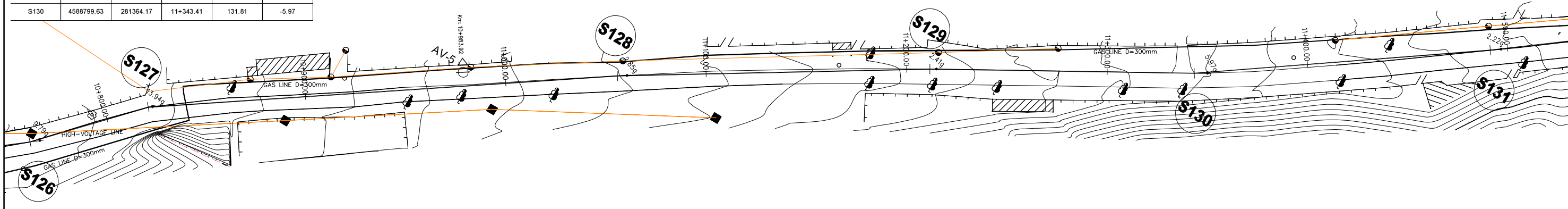


LEGEND

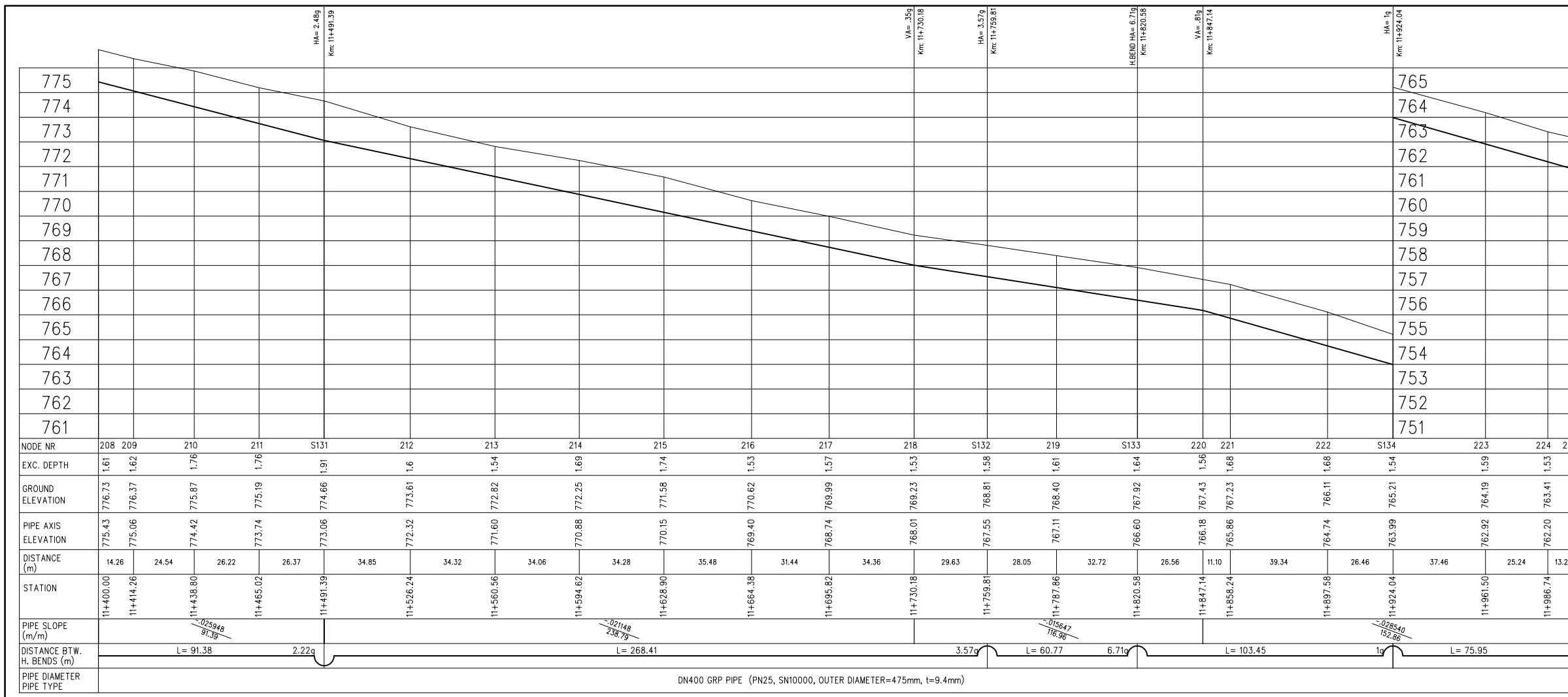
	AIR VALVE	V. BEND	= VERTICAL BEND
	WASHOUT VALVE	H. BEND	= HORIZONTAL BEND
	LINE VALVE	C. BEND	= COMBINED BEND
		VA	= VERTICAL ANGLE (in grad)
		HA	= HORIZONTAL ANGLE (in grad)
		CA	= COMBINED ANGLE (in grad)
		AV	= AIR VALVE
		WV	= WASHOUT VALVE
		LV	= LINE VALVE



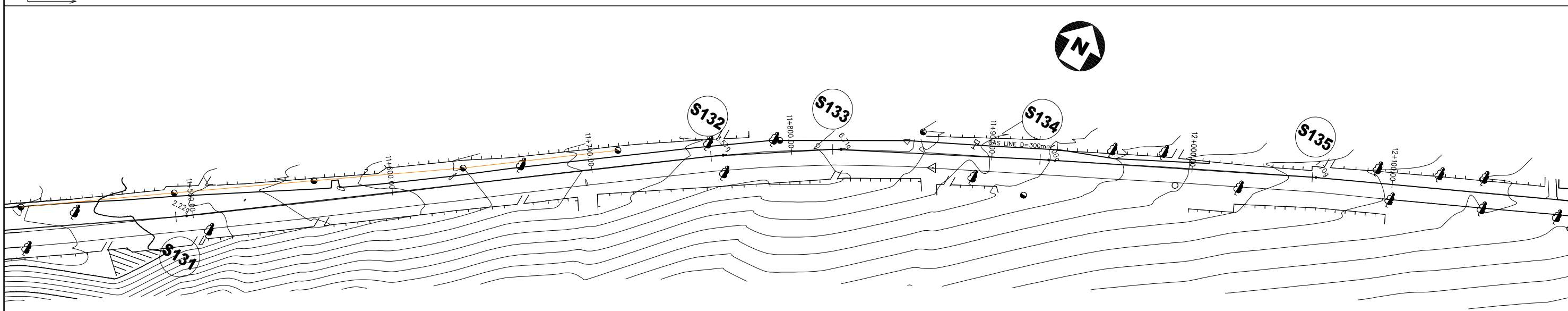
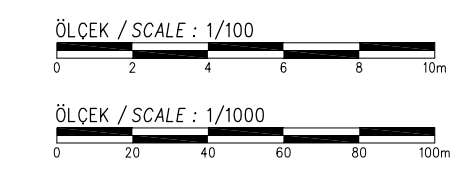
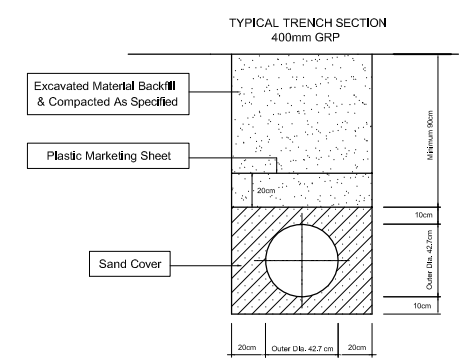
NODE NR	COORDINATES		STATION (m)	DISTANCE (m)	ANGLE (grad)
	NORTH	EAST			
S127	4588519.02	280924.39	10+821.43	61.43	13.94
S128	4588651.77	281117.53	11+055.79	234.37	2.85
S129	4588734.19	281249.75	11+211.60	155.81	2.41
S130	4588799.63	281364.17	11+343.41	131.81	-5.97



SPECIAL ASSISTANCE FOR PROJECT IMPLEMENTATION (SAPI) FOR THE PROVINCIAL CITIES WATER SUPPLY AND SEWERAGE PROJECT IN THE REPUBLIC OF AZERBAIJAN	AZERSU JOINT STOCK COMPANY, the Republic of Azerbaijan	Site : Gusar	Facility : Plan & Profile of TL From Gusar River Left Bank Water Source to Zone I Serv. Res.	Title : Between KM: 10+800.00 - 11+400.00	Scale of Drawing : 1/1000	Category - City : SU-GUS-	Facility Code - Number : 09-02(19)
	Japan International Cooperation Agency (JICA), Japan				Original Size of Paper : A1	Date : March 2010	Revision Number : Rev.0

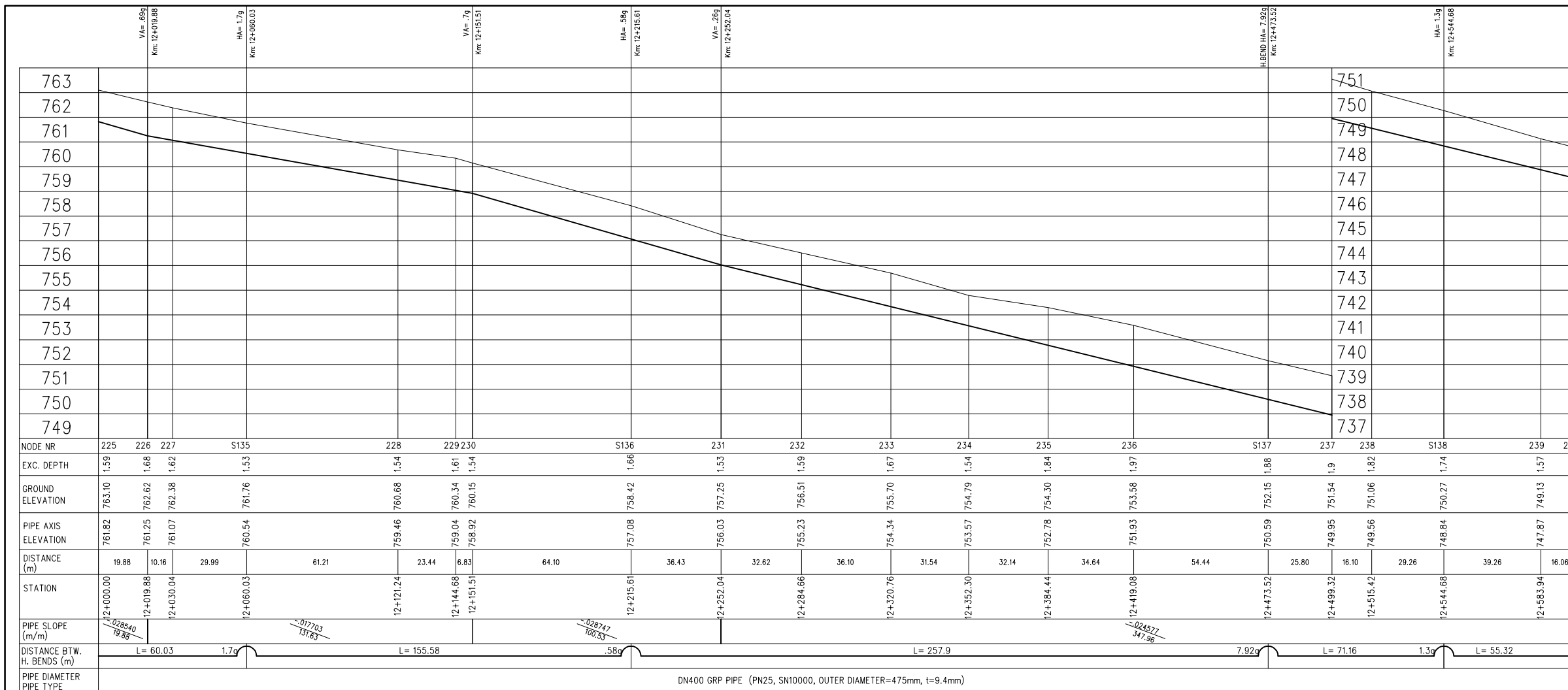


- LEGEND**
- △ AIR VALVE
 - WASHOUT VALVE
 - ⊗ LINE VALVE
 - V. BEND = VERTICAL BEND
 - H. BEND = HORIZONTAL BEND
 - C. BEND = COMBINED BEND
 - VA = VERTICAL ANGLE (in grad)
 - HA = HORIZONTAL ANGLE (in grad)
 - CA = COMBINED ANGLE (in grad)
 - AV = AIR VALVE
 - WV = WASHOUT VALVE
 - LV = LINE VALVE

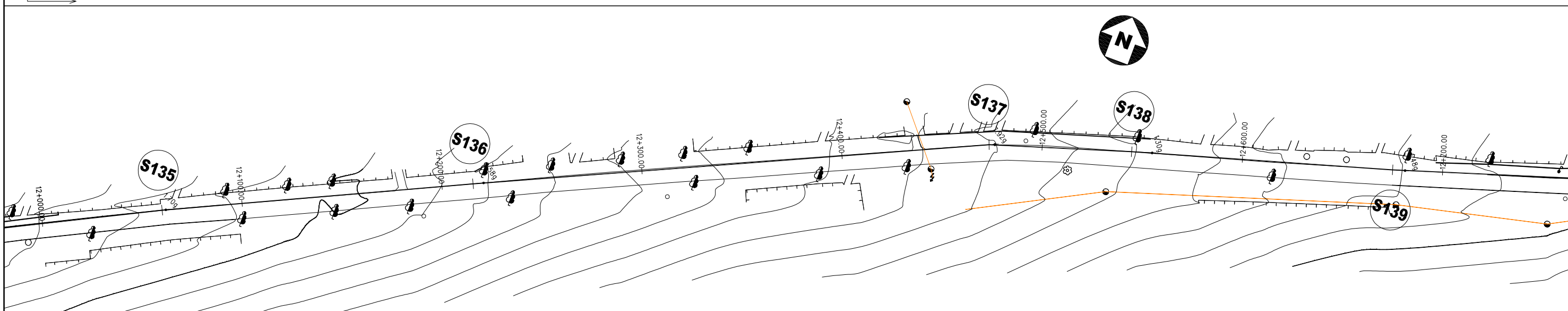
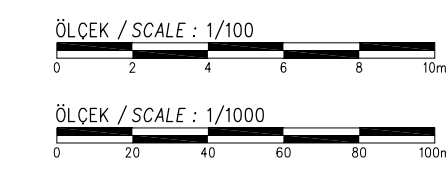
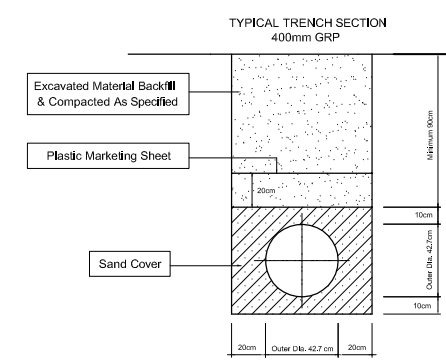


NODE NR	COORDINATES		STATION (m)	DISTANCE (m)	ANGLE (grad)
	NORTH	EAST			
S131	4588884.80	281485.18	11+491.39	147.98	-2.22
S132	4589046.85	281699.17	11+759.81	268.42	3.57
S133	4589080.76	281749.60	11+820.58	60.77	6.71
S134	4589129.15	281841.05	11+924.04	103.46	1.00

SPECIAL ASSISTANCE FOR PROJECT IMPLEMENTATION (SAPI) FOR THE PROVINCIAL CITIES WATER SUPPLY AND SEWERAGE PROJECT IN THE REPUBLIC OF AZERBAIJAN	AZERSU JOINT STOCK COMPANY, the Republic of Azerbaijan Japan International Cooperation Agency (JICA), Japan	Site :	Facility :	Title :	Scale of Drawing :	Category - City	Facility Code - Number
	Gusar	Gusar River Left Bank Water Source to Zone I Serv. Res.	Between KM: 11+400.00 - 12+000.00	1/1000	SU-GUS-	09-02(20)	
				Original Size of Paper : A1	Date : March 2010	Revision Number : Rev.0	

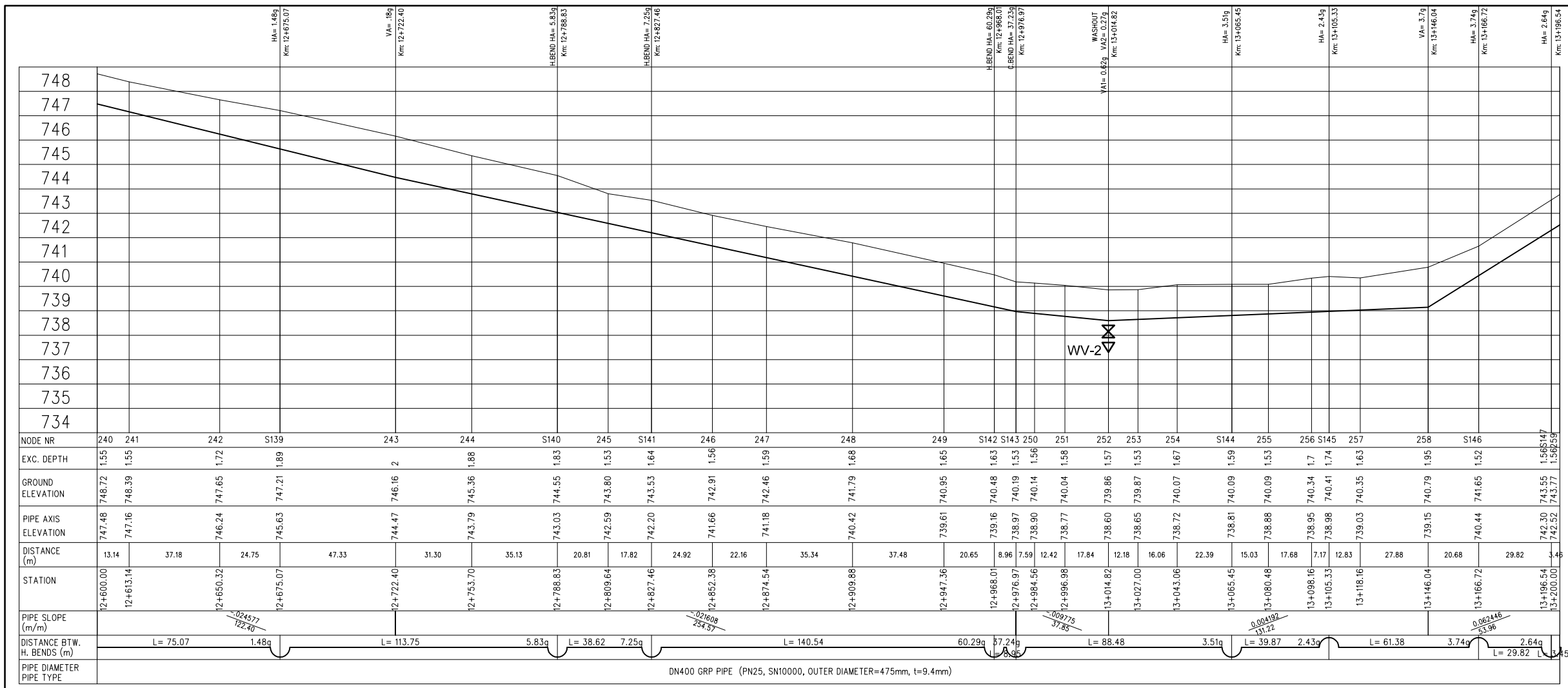


- LEGEND**
- AIR VALVE
 - WASHOUT VALVE
 - LINE VALVE
 - V. BEND = VERTICAL BEND
 - H. BEND = HORIZONTAL BEND
 - C. BEND = COMBINED BEND
 - VA = VERTICAL ANGLE (in grad)
 - HA = HORIZONTAL ANGLE (in grad)
 - CA = COMBINED ANGLE (in grad)
 - AV = AIR VALVE
 - WV = WASHOUT VALVE
 - LV = LINE VALVE



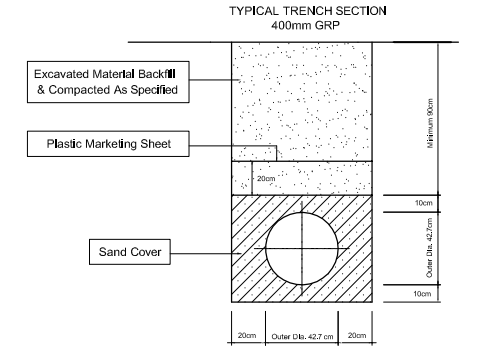
NODE NR	COORDINATES		STATION (m)	DISTANCE (m)	ANGLE (grad)
	NORTH	EAST			
S135	4589190.86	281962.23	12+060.03	135.99	1.70
S136	4589257.73	282102.70	12+215.61	155.58	0.58
S137	4589366.46	282336.57	12+473.52	257.91	7.92
S138	4589388.22	282404.32	12+544.68	71.16	1.30

SPECIAL ASSISTANCE FOR PROJECT IMPLEMENTATION (SAPI) FOR THE PROVINCIAL CITIES WATER SUPPLY AND SEWERAGE PROJECT IN THE REPUBLIC OF AZERBAIJAN	AZERSU JOINT STOCK COMPANY, the Republic of Azerbaijan		Site :	Facility :	Title :	Scale of Drawing :	Category - City	Facility Code - Number
	Japan International Cooperation Agency (JICA), Japan		Gusar	Plan & Profile of TL From Gusar River Left Bank Water Source to Zone I Serv. Res.	Between KM: 12+000.00 - 12+600.00	1/1000	SU-GUS-	09-02(21)
						Original Size of Paper : A1	Date : March 2010	Revision Number : Rev.0



LEGEND

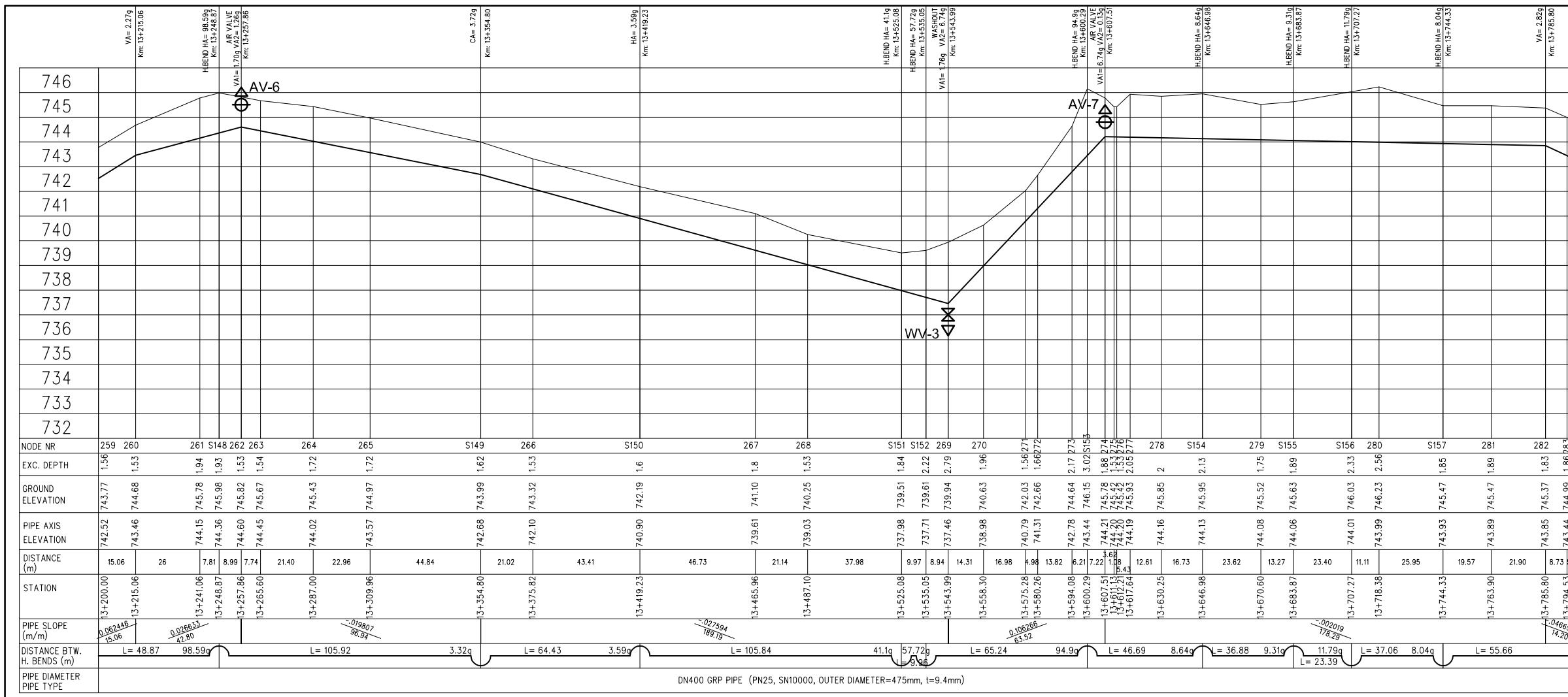
	AIR VALVE		V. BEND = VERTICAL BEND
	WASHOUT VALVE		H. BEND = HORIZONTAL BEND
	LINE VALVE		C. BEND = COMBINED BEND
			VA = VERTICAL ANGLE (in grad)
			HA = HORIZONTAL ANGLE (in grad)
			CA = COMBINED ANGLE (in grad)
			AV = AIR VALVE
			WV = WASHOUT VALVE
			LV = LINE VALVE



NODE NR	COORDINATES		STATION (m)	DISTANCE (m)	ANGLE (grad)
	NORTH	EAST			
S139	4589425.54	282529.25	12+875.07	130.38	-1.48
S140	4589460.63	282637.47	12+788.83	113.76	-5.83
S141	4589475.85	282672.97	12+827.46	38.63	-7.25
S142	4589545.56	282795.01	12+968.01	140.55	-60.29
S143	4589554.48	282795.95	12+976.97	8.97	-37.24
S144	4589632.95	282755.09	13+065.45	88.47	-3.51
S145	4589667.26	282734.75	13+105.33	39.88	2.43
S146	4589721.22	282705.48	13+166.72	61.39	3.74
S147	4589748.22	282692.83	13+196.54	29.82	-2.64

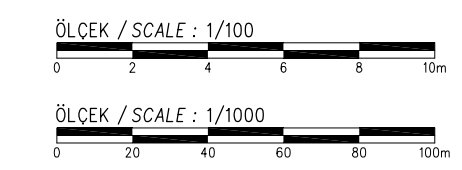
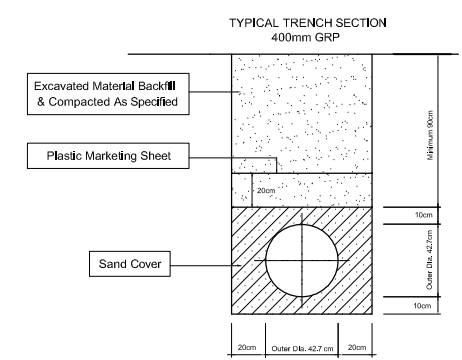


SPECIAL ASSISTANCE FOR PROJECT IMPLEMENTATION (SAPI) FOR THE PROVINCIAL CITIES WATER SUPPLY AND SEWERAGE PROJECT IN THE REPUBLIC OF AZERBAIJAN	AZERSU JOINT STOCK COMPANY, the Republic of Azerbaijan		Site :	Facility :	Title :	Scale of Drawing :	Category - City	Facility Code - Number
	Japan International Cooperation Agency (JICA), Japan		Gusar	Plan & Profile of TL From Gusar River Left Bank Water Source to Zone I Serv. Res.	Between KM: 12+600.00 - 13+200.00	1/1000	SU-GUS-	09-02(22)
						Original Size of Paper : A1	Date : March 2010	Revision Number : Rev.0

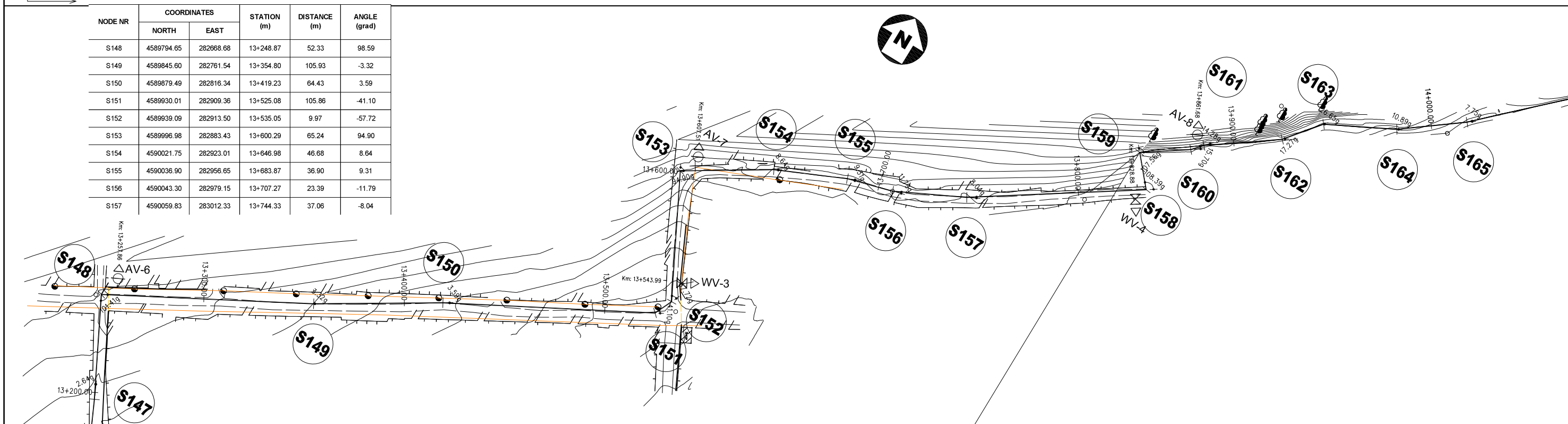


LEGEND

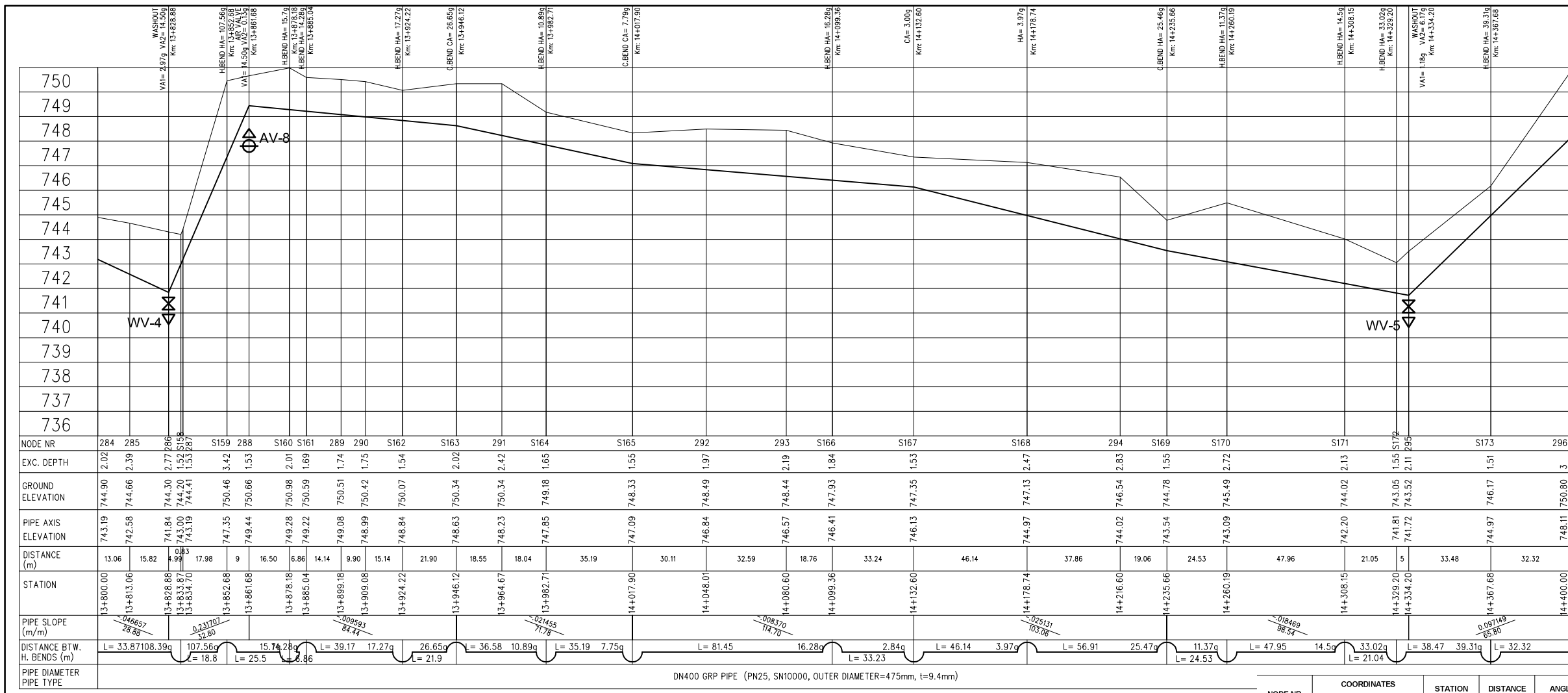
	V. BEND = VERTICAL BEND
	H. BEND = HORIZONTAL BEND
	C. BEND = COMBINED BEND
	VA = VERTICAL ANGLE (in grad)
	HA = HORIZONTAL ANGLE (in grad)
	CA = COMBINED ANGLE (in grad)
	AV = AIR VALVE
	WV = WASHOUT VALVE
	LV = LINE VALVE



NODE NR	COORDINATES		STATION (m)	DISTANCE (m)	ANGLE (grad)
	NORTH	EAST			
S148	4589794.65	282668.68	13+248.87	52.33	98.59
S149	4589845.60	282761.54	13+354.80	105.93	-3.32
S150	4589879.49	282816.34	13+419.23	64.43	3.59
S151	4589930.01	282909.36	13+525.08	105.86	-41.10
S152	4589939.09	282913.50	13+535.05	9.97	-57.72
S153	4589996.98	282883.43	13+600.29	65.24	94.90
S154	4590021.75	282923.01	13+646.98	46.68	8.64
S155	4590036.90	282956.65	13+683.87	36.90	9.31
S156	4590043.30	282979.15	13+707.27	23.39	-11.79
S157	4590059.83	283012.33	13+744.33	37.06	-8.04

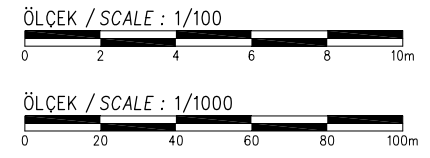
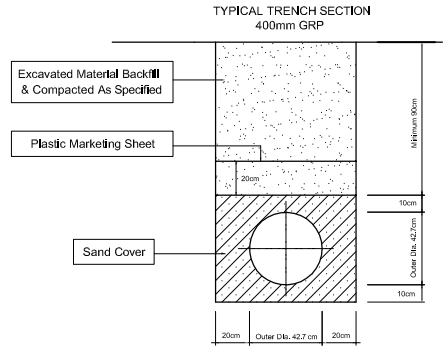


SPECIAL ASSISTANCE FOR PROJECT IMPLEMENTATION (SAPI) FOR THE PROVINCIAL CITIES WATER SUPPLY AND SEWERAGE PROJECT IN THE REPUBLIC OF AZERBAIJAN	AZERSU JOINT STOCK COMPANY, the Republic of Azerbaijan		Site :	Facility :	Title :	Scale of Drawing :	Category - City	Facility Code - Number
	Japan International Cooperation Agency (JICA), Japan		Gusar	Plan & Profile of TL From Gusar River Left Bank Water Source to Zone I Serv. Res.	Between KM: 13+200.00 - 13+800.00	1/1000	SU-GUS-	09-02(23)
						Original Size of Paper : A1	Date	Revision Number
							March 2010	Rev.0



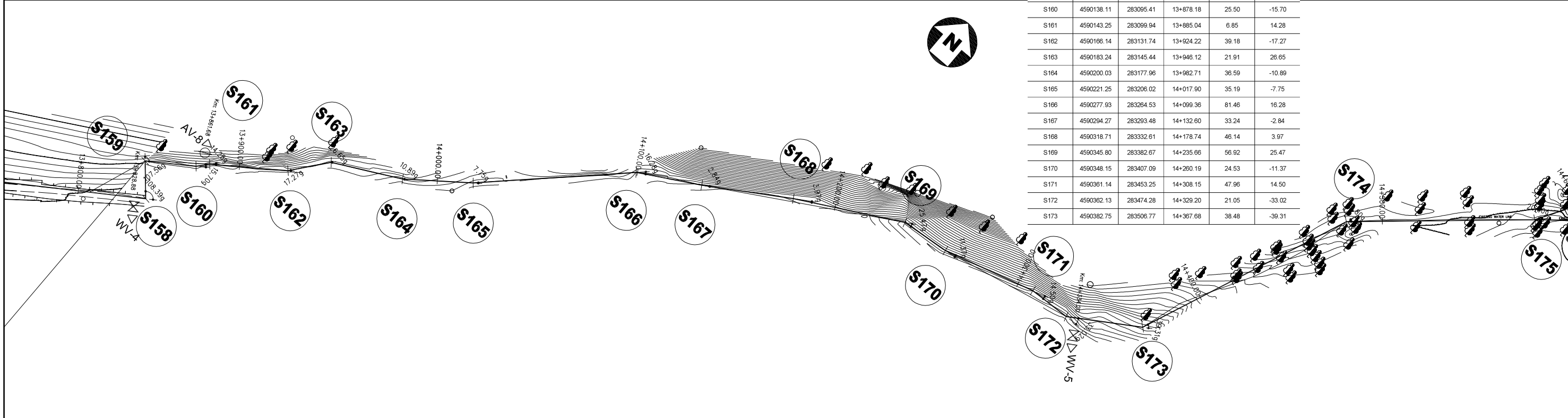
LEGEND

	AIR VALVE		V. BEND = VERTICAL BEND
	WASHOUT VALVE		H. BEND = HORIZONTAL BEND
	LINE VALVE		C. BEND = COMBINED BEND
		VA	= VERTICAL ANGLE (in grad)
		HA	= HORIZONTAL ANGLE (in grad)
		CA	= COMBINED ANGLE (in grad)
		AV	= AIR VALVE
		WV	= WASHOUT VALVE
		LV	= LINE VALVE

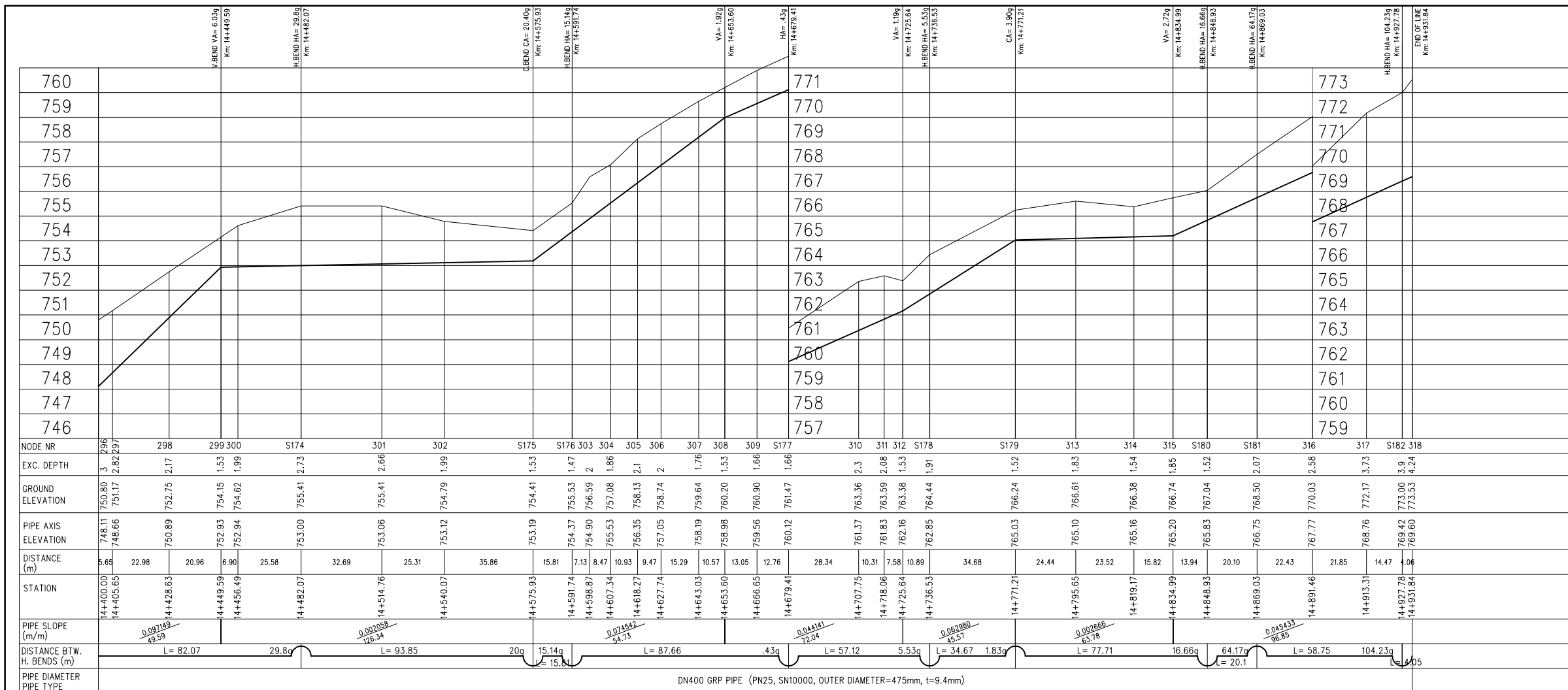


NODE NR	284	285	286	287	288	289	290	291	292	293	294	295	296
EXC. DEPTH	2.02	2.39	2.77	1.52	1.53	1.53	1.54	1.55	1.55	1.55	1.55	1.55	1.55
GROUND ELEVATION	744.90	744.86	744.30	744.20	744.41	750.46	750.66	750.98	750.59	750.34	748.44	746.54	748.11
PIPE AXIS ELEVATION	743.19	742.58	741.84	743.00	743.19	747.35	749.44	749.28	749.22	749.08	746.99	746.57	744.97
DISTANCE (m)	13.06	15.82	8.99	17.98	9	16.50	6.86	14.14	9.90	15.14	21.90	18.55	30.11
STATION	13+800.00	13+813.06	13+822.05	13+840.03	13+858.02	13+874.52	13+881.38	13+895.52	13+905.42	13+920.56	13+942.46	13+961.01	13+991.12
PIPE SLOPE (m/m)	-0.06657	-0.06657	0.231707	-0.06657	-0.06657	-0.06657	-0.06657	-0.06657	-0.06657	-0.06657	-0.06657	-0.06657	-0.06657
DISTANCE BTW. H. BENDS (m)	L= 33.87	L= 108.33	L= 18.8	L= 25.5	L= 15.74	L= 17.27	L= 26.65	L= 36.58	L= 10.89	L= 35.19	L= 7.75	L= 81.45	L= 16.28
PIPE DIAMETER	DN400 GRP PIPE (PN25, SN10000, OUTER DIAMETER=475mm, t=9.4mm)												
PIPE TYPE													

NODE NR	COORDINATES		STATION (m)	DISTANCE (m)	ANGLE (grad)
	NORTH	EAST			
S158	4590109.54	283086.80	13+833.87	89.54	-108.39
S159	4590123.68	283074.39	13+852.68	18.81	107.56
S160	4590138.11	283095.41	13+878.18	25.50	-15.70
S161	4590143.25	283099.94	13+885.04	6.85	14.28
S162	4590166.14	283131.74	13+924.22	39.18	-17.27
S163	4590183.24	283145.44	13+946.12	21.91	26.65
S164	4590200.03	283177.96	13+982.71	36.59	-10.89
S165	4590221.25	283206.02	14+017.90	35.19	-7.75
S166	4590277.93	283284.53	14+099.36	81.46	16.28
S167	4590294.27	283293.48	14+132.60	33.24	-2.84
S168	4590318.71	283332.61	14+178.74	46.14	3.97
S169	4590345.80	283382.67	14+235.66	56.92	25.47
S170	4590348.15	283407.09	14+260.19	24.53	-11.37
S171	4590361.14	283453.25	14+308.15	47.96	14.50
S172	4590362.13	283474.28	14+329.20	21.05	-33.02
S173	4590382.75	283506.77	14+367.68	38.48	-39.31

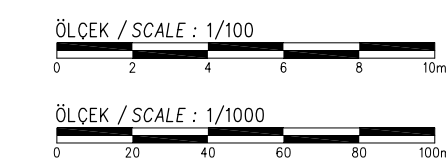
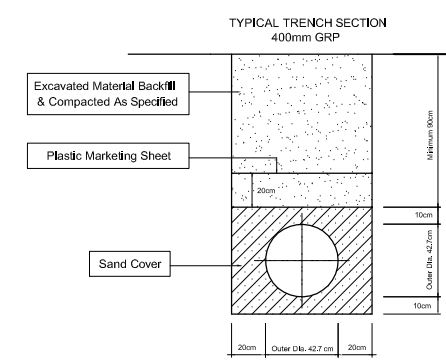


SPECIAL ASSISTANCE FOR PROJECT IMPLEMENTATION (SAPI) FOR THE PROVINCIAL CITIES WATER SUPPLY AND SEWERAGE PROJECT IN THE REPUBLIC OF AZERBAIJAN	AZERSU JOINT STOCK COMPANY, the Republic of Azerbaijan		Site :	Facility :	Title :	Scale of Drawing :	Category - City	Facility Code - Number
	Japan International Cooperation Agency (JICA), Japan		Gusar	Plan & Profile of TL From Gusar River Left Bank Water Source to Zone I Serv. Res.	Between KM: 13+800.00 - 14+400.00	1/1000	SU-GUS-	09-02(24)
						Original Size of Paper : A1	Date	Revision Number
							March 2010	Rev.0

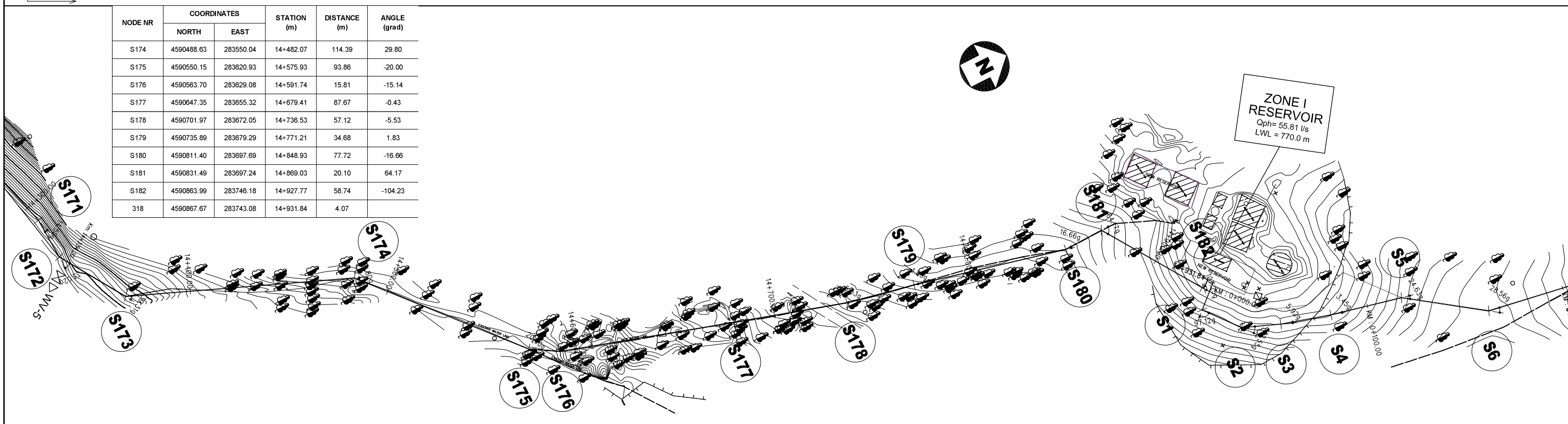


LEGEND

	AIR VALVE		V. BEND = VERTICAL BEND
	WASHOUT VALVE		H. BEND = HORIZONTAL BEND
	LINE VALVE		C. BEND = COMBINED BEND
		VA	= VERTICAL ANGLE (in grad)
		HA	= HORIZONTAL ANGLE (in grad)
		CA	= COMBINED ANGLE (in grad)
		AV	= AIR VALVE
		WV	= WASHOUT VALVE
		LV	= LINE VALVE



NODE NR	COORDINATES		STATION (m)	DISTANCE (m)	ANGLE (grad)
	NORTH	EAST			
S174	4590488.63	283550.04	14+482.07	114.39	29.80
S175	4590550.15	283620.93	14+575.93	93.86	-20.00
S176	4590563.70	283629.08	14+591.74	15.81	-15.14
S177	4590647.35	283655.32	14+679.41	87.67	-0.43
S178	4590701.97	283672.05	14+736.53	57.12	-5.53
S179	4590735.89	283679.29	14+771.21	34.68	1.83
S180	4590811.40	283697.69	14+848.93	77.72	-16.66
S181	4590831.49	283697.24	14+869.03	20.10	64.17
S182	4590863.99	283746.18	14+927.77	58.74	-104.23
S18	4590867.67	283743.08	14+931.84	4.07	



SPECIAL ASSISTANCE FOR PROJECT IMPLEMENTATION (SAPI) FOR THE PROVINCIAL CITIES WATER SUPPLY AND SEWERAGE PROJECT IN THE REPUBLIC OF AZERBAIJAN	AZERSU JOINT STOCK COMPANY, the Republic of Azerbaijan		Site :	Facility :	Title :	Scale of Drawing :	Category - City	Facility Code - Number
	Japan International Cooperation Agency (JICA), Japan		Gusar	Plan & Profile of TL From Gusar River Left Bank Water Source to Zone I Serv. Res.	Between KM: 14+400.00 - 14+931.84	1/1000	SU-GUS-	09-02(25)
						Original Size of Paper : A1	Date : March 2010	Revision Number : Rev.0