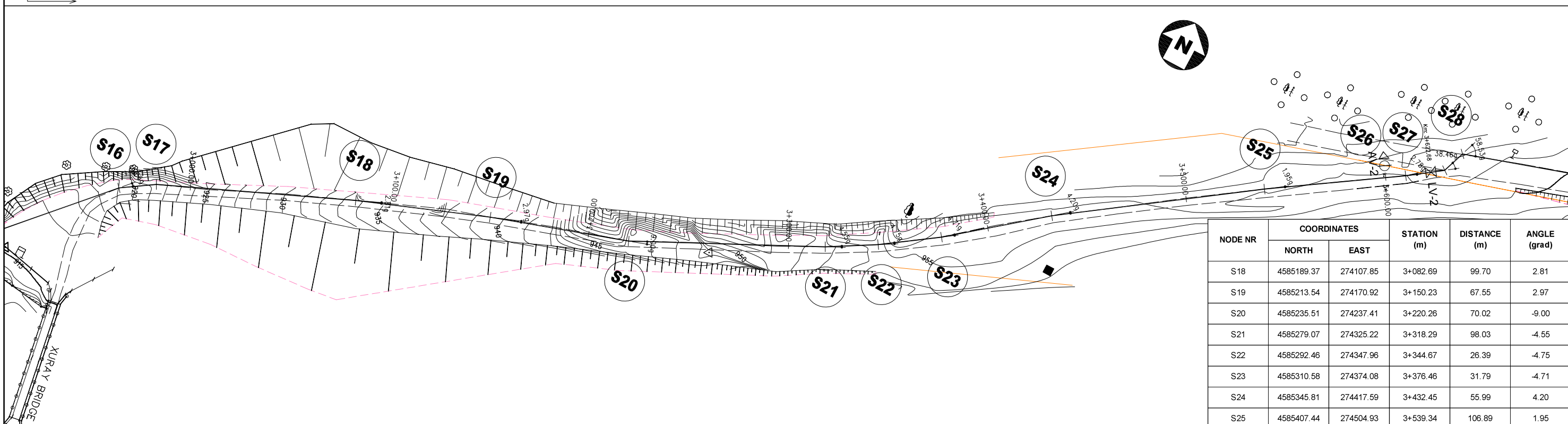
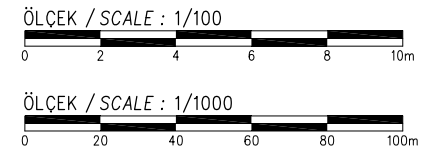
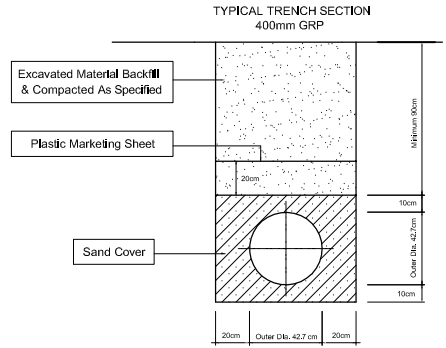


- LEGEND**
- △ AIR VALVE
 - ▽ WASHOUT VALVE
 - ⊗ LINE VALVE
 - V. BEND = VERTICAL BEND
 - H. BEND = HORIZONTAL BEND
 - C. BEND = COMBINED BEND
 - VA = VERTICAL ANGLE (in grad)
 - HA = HORIZONTAL ANGLE (in grad)
 - CA = COMBINED ANGLE (in grad)
 - AV = AIR VALVE
 - WV = WASHOUT VALVE
 - LV = LINE VALVE



NODE NR	COORDINATES		STATION (m)	DISTANCE (m)	ANGLE (grad)
	NORTH	EAST			
S18	4585189.37	274107.85	3+082.69	99.70	2.81
S19	4585213.54	274170.92	3+150.23	67.55	2.97
S20	4585235.51	274237.41	3+220.26	70.02	-9.00
S21	4585279.07	274325.22	3+318.29	98.03	-4.55
S22	4585292.46	274347.96	3+344.67	26.39	-4.75
S23	4585310.58	274374.08	3+376.46	31.79	-4.71
S24	4585345.81	274417.59	3+432.45	55.99	4.20
S25	4585407.44	274504.93	3+539.34	106.89	1.95

SPECIAL ASSISTANCE FOR PROJECT IMPLEMENTATION (SAPI) FOR THE PROVINCIAL CITIES WATER SUPPLY AND SEWERAGE PROJECT IN THE REPUBLIC OF AZERBAIJAN

AZERSU JOINT STOCK COMPANY, the Republic of Azerbaijan
Japan International Cooperation Agency (JICA), Japan

Site : Gusar

Facility : Plan & Profile of TL From Gusar River Left Bank Water Source to Zone I Serv. Res.

Title : Between KM: 3+000.00 - 3+600.00

Scale of Drawing : 1/1000

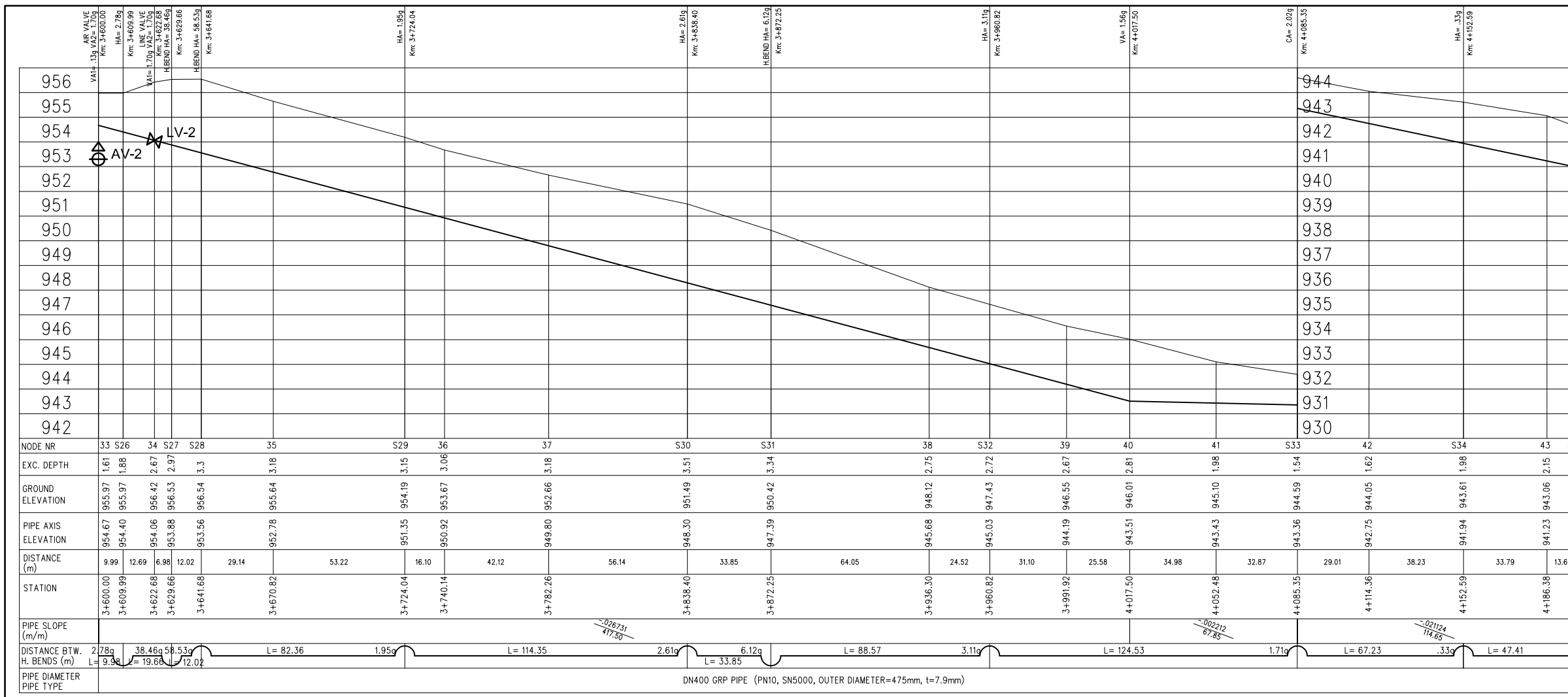
Original Size of Paper : A1

Category - City : SU-GUS-

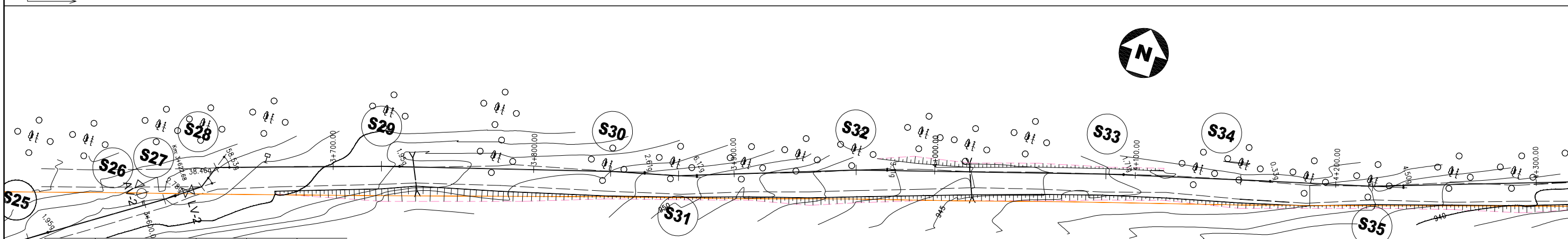
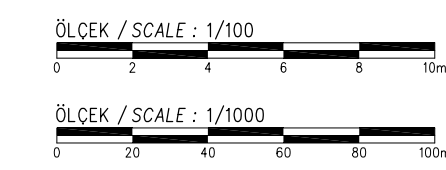
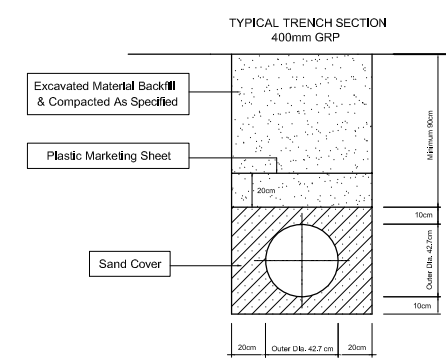
Facility Code - Number : 09-02(06)

Date : March 2010

Revision Number : Rev.0

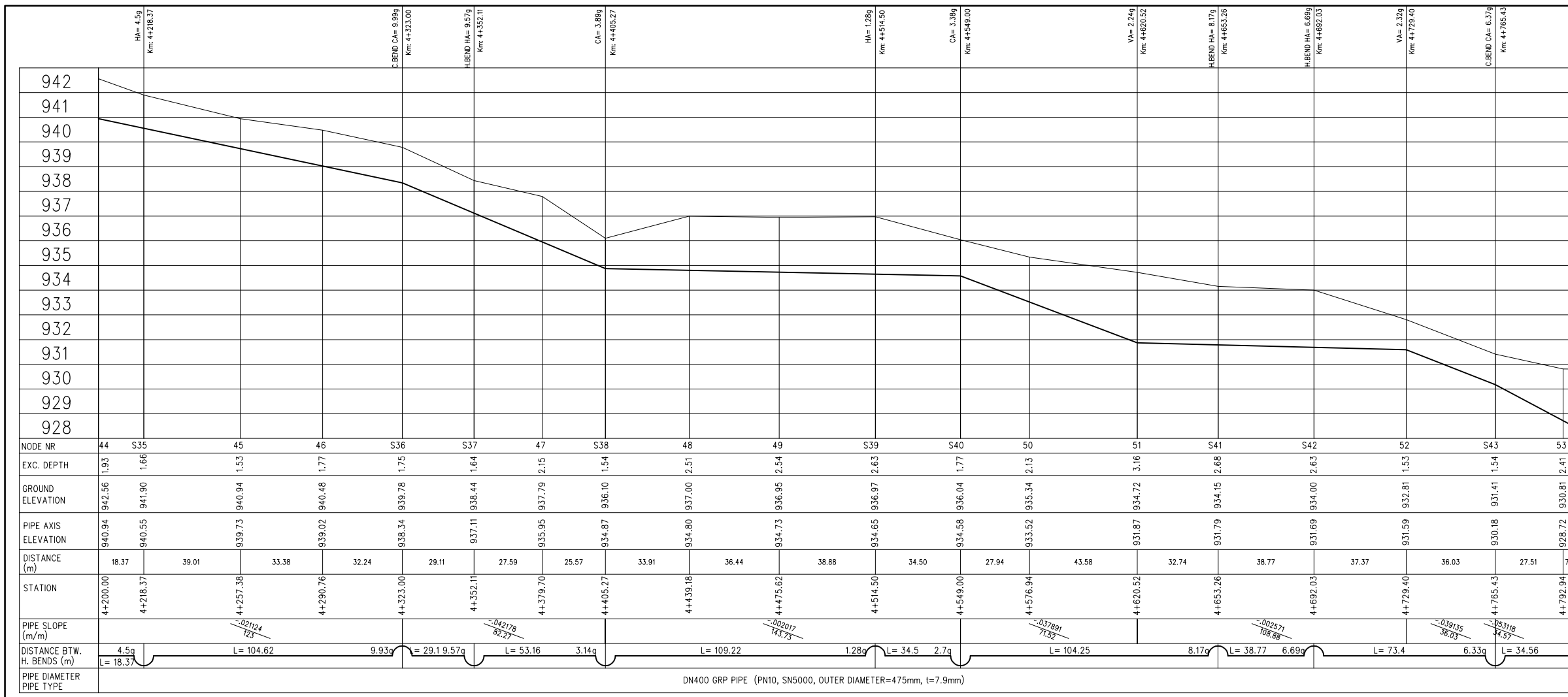


- LEGEND**
- V. BEND = VERTICAL BEND
 - H. BEND = HORIZONTAL BEND
 - C. BEND = COMBINED BEND
 - VA = VERTICAL ANGLE (in grad)
 - HA = HORIZONTAL ANGLE (in grad)
 - CA = COMBINED ANGLE (in grad)
 - AV = AIR VALVE
 - WV = WASHOUT VALVE
 - LV = LINE VALVE



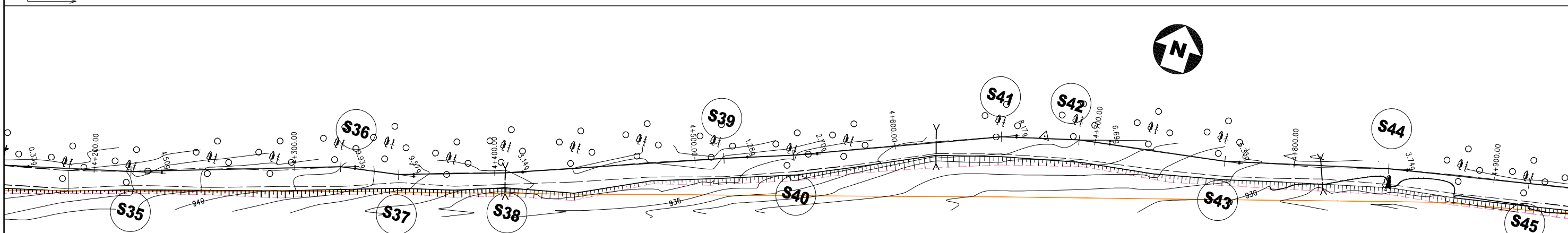
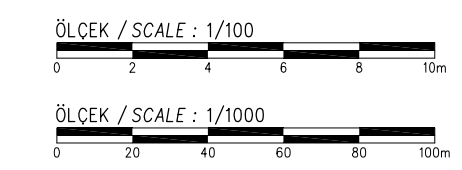
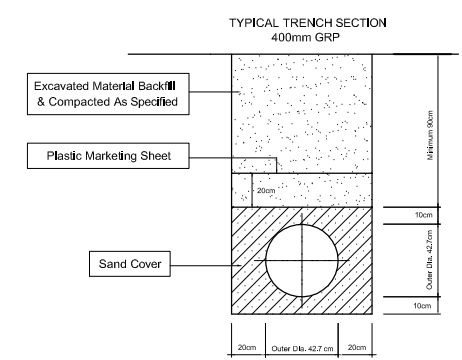
NODE NR	COORDINATES		STATION (m)	DISTANCE (m)	ANGLE (grad)
	NORTH	EAST			
S26	4585446.40	274563.87	3+609.99	70.66	-2.78
S27	4585457.95	274579.79	3+629.66	19.66	-38.46
S28	4585469.28	274583.78	3+641.68	12.02	58.53
S29	4585494.60	274662.16	3+724.04	82.36	1.95
S30	4585526.41	274772.01	3+838.40	114.37	2.61
S31	4585534.48	274804.88	3+872.25	33.84	-6.12
S32	4585563.77	274888.46	3+960.82	88.57	3.11
S33	4585599.16	275007.87	4+085.35	124.54	1.71
S34	4585616.53	275072.81	4+152.59	67.23	0.33

SPECIAL ASSISTANCE FOR PROJECT IMPLEMENTATION (SAPI) FOR THE PROVINCIAL CITIES WATER SUPPLY AND SEWERAGE PROJECT IN THE REPUBLIC OF AZERBAIJAN	AZERSU JOINT STOCK COMPANY, the Republic of Azerbaijan		Site :	Facility :	Title :	Scale of Drawing :	Category - City	Facility Code - Number
	Japan International Cooperation Agency (JICA), Japan		Gusar	Plan & Profile of TL From Gusar River Left Bank Water Source to Zone I Serv. Res.	Between KM: 3+600.00 - 4+200.00	1/1000	SU-GUS-	09-02(07)
						Original Size of Paper : A1	Date	Revision Number
							March 2010	Rev.0



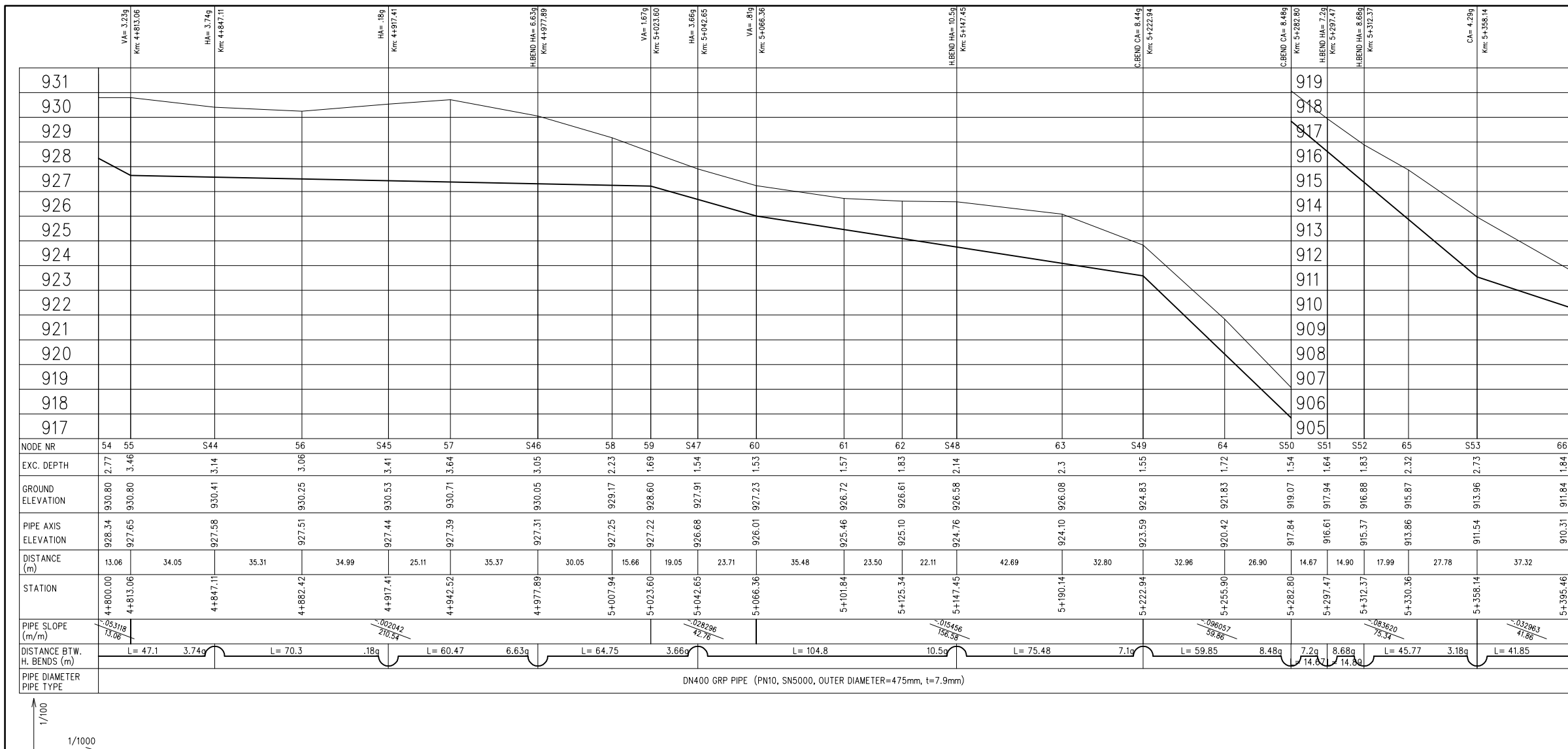
LEGEND

	AIR VALVE		V. BEND = VERTICAL BEND
	WASHOUT VALVE		H. BEND = HORIZONTAL BEND
	LINE VALVE		C. BEND = COMBINED BEND
			VA = VERTICAL ANGLE (in grad)
			HA = HORIZONTAL ANGLE (in grad)
			CA = COMBINED ANGLE (in grad)
			AV = AIR VALVE
			WV = WASHOUT VALVE
			LV = LINE VALVE

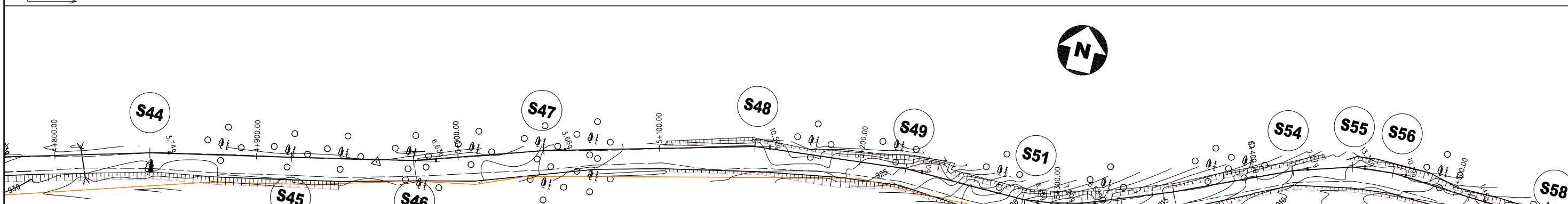
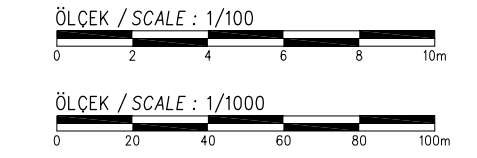
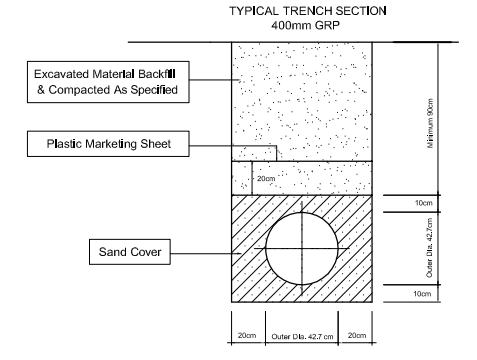


NODE NR	COORDINATES		STATION (m)	DISTANCE (m)	ANGLE (grad)
	NORTH	EAST			
S35	4585633.20	275136.45	4+218.37	65.78	-4.50
S36	4585666.79	275235.55	4+323.00	104.63	9.93
S37	4585671.73	275264.23	4+352.11	29.10	-9.57
S38	4585688.52	275314.68	4+405.27	53.17	-3.14
S39	4585728.05	275416.50	4+514.50	109.23	1.28
S40	4585739.89	275448.91	4+549.00	34.51	-2.70
S41	4585779.78	275545.23	4+653.26	104.26	8.17
S42	4585789.91	275582.66	4+692.03	38.77	6.69
S43	4585801.55	275655.12	4+765.43	73.40	-6.33

SPECIAL ASSISTANCE FOR PROJECT IMPLEMENTATION (SAPI) FOR THE PROVINCIAL CITIES WATER SUPPLY AND SEWERAGE PROJECT IN THE REPUBLIC OF AZERBAIJAN	AZERSU JOINT STOCK COMPANY, the Republic of Azerbaijan		Site :	Facility :	Title :	Scale of Drawing :	Category - City	Facility Code - Number
	Japan International Cooperation Agency (JICA), Japan		Gusar	Plan & Profile of TL From Gusar River Left Bank Water Source to Zone I Serv. Res.	Between KM: 4+200.00 - 4+800.00	1/1000	SU-GUS-	09-02(08)
						Original Size of Paper : A1	Date : March 2010	Revision Number : Rev.0

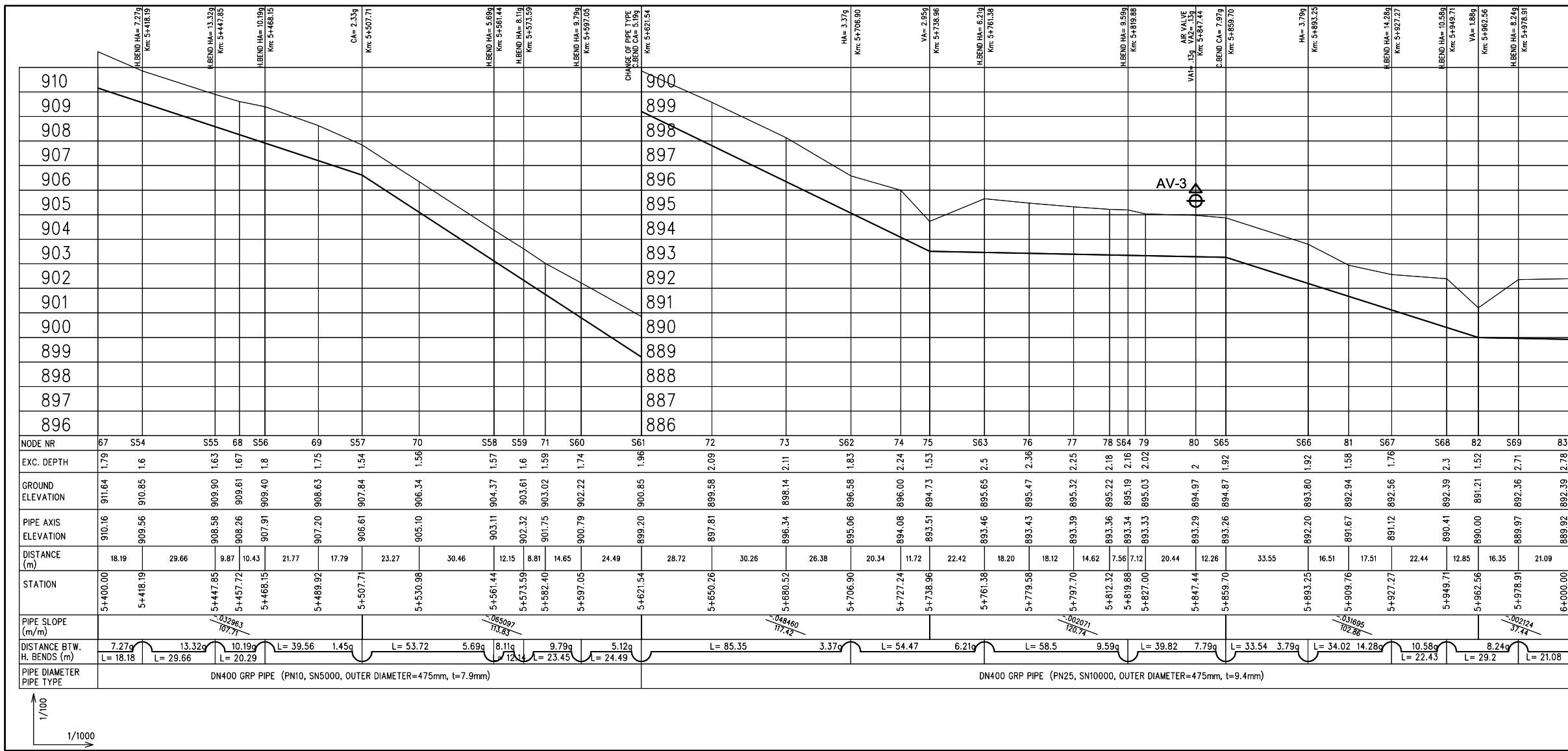


- LEGEND
- V. BEND = VERTICAL BEND
 - H. BEND = HORIZONTAL BEND
 - C. BEND = COMBINED BEND
 - VA = VERTICAL ANGLE (in grad)
 - HA = HORIZONTAL ANGLE (in grad)
 - CA = COMBINED ANGLE (in grad)
 - AV = AIR VALVE
 - WV = WASHOUT VALVE
 - LV = LINE VALVE



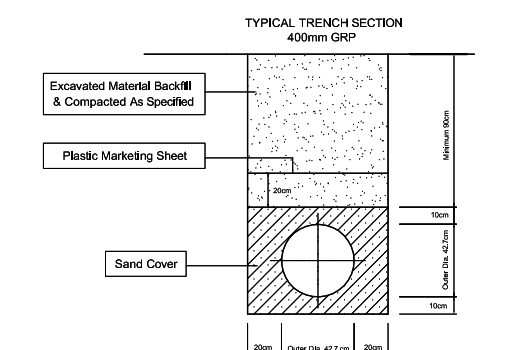
NODE NR	COORDINATES		STATION (m)	DISTANCE (m)	ANGLE (grad)
	NORTH	EAST			
S44	4585822.44	275734.09	4+847.11	81.68	3.74
S45	4585836.39	275802.98	4+917.41	70.29	-0.18
S46	4585848.58	275862.23	4+977.89	60.48	-6.63
S47	4585868.15	275923.96	5+042.65	64.76	3.66
S48	4585894.03	276025.51	5+147.45	104.80	10.50
S49	4585900.41	276100.74	5+222.94	75.50	7.10
S50	4585898.81	276160.57	5+282.80	59.86	-8.48
S51	4585900.37	276175.16	5+297.47	14.67	-7.20
S52	4585903.61	276189.71	5+312.37	14.90	-8.68
S53	4585919.55	276232.61	5+358.14	45.77	-3.18

SPECIAL ASSISTANCE FOR PROJECT IMPLEMENTATION (SAPI) FOR THE PROVINCIAL CITIES WATER SUPPLY AND SEWERAGE PROJECT IN THE REPUBLIC OF AZERBAIJAN	AZERSU JOINT STOCK COMPANY, the Republic of Azerbaijan		Site :	Facility :	Title :	Scale of Drawing :	Category - City	Facility Code - Number
	Japan International Cooperation Agency (JICA), Japan		Gusar	Plan & Profile of TL From Gusar River Left Bank Water Source to Zone I Serv. Res.	Between KM: 4+800.00 - 5+400.00	1/1000	SU-GUS-	09-02(09)
						Original Size of Paper : A1	Date	Revision Number
							March 2010	Rev.0

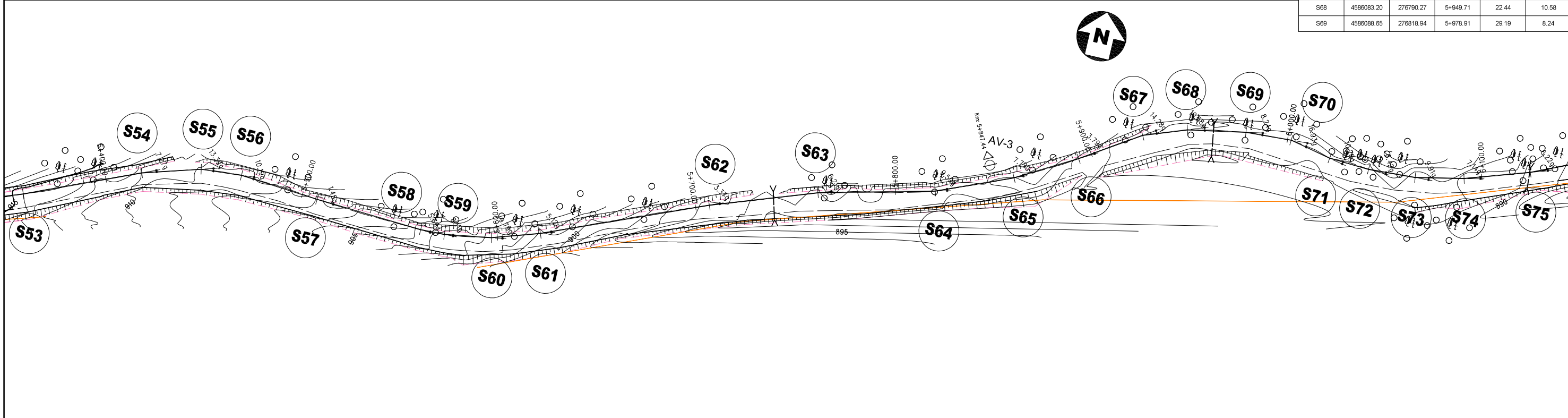


LEGEND

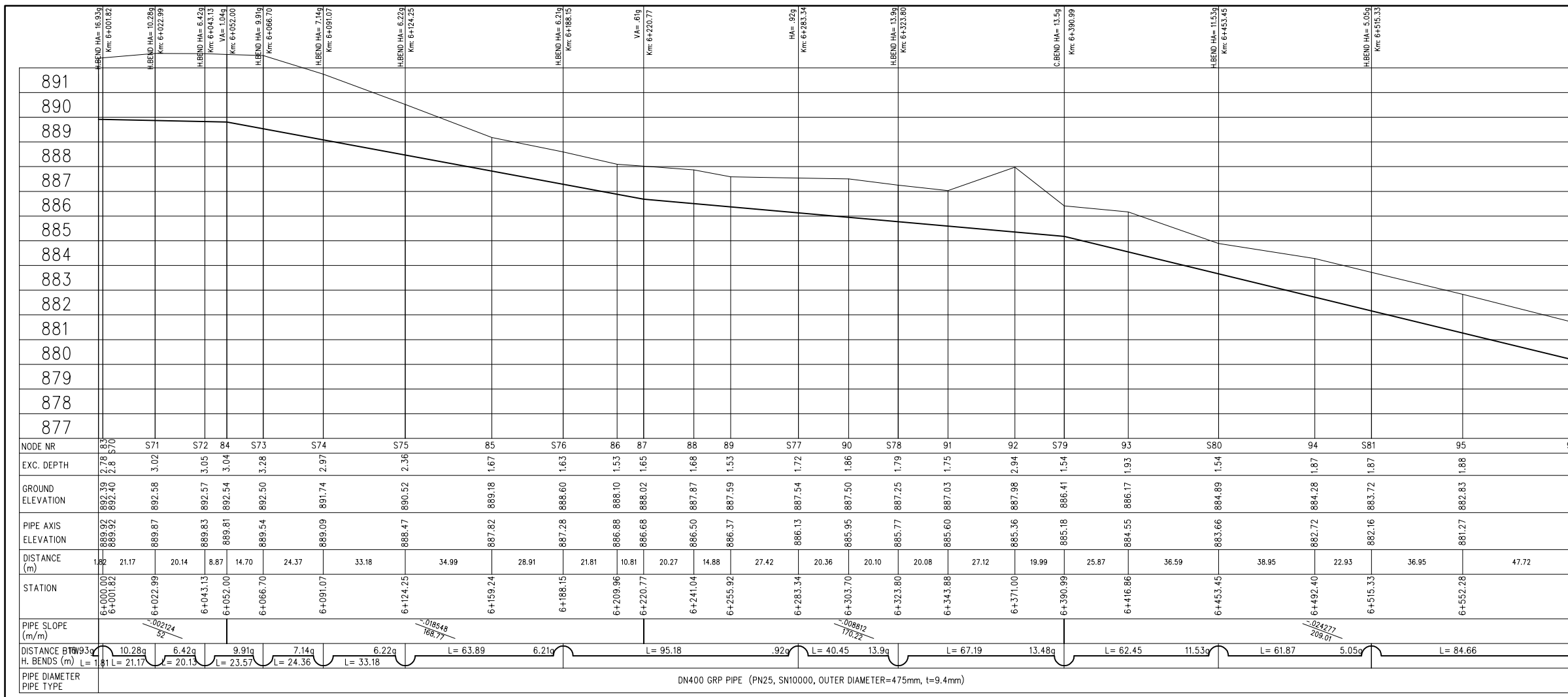
- V. BEND = VERTICAL BEND
- H. BEND = HORIZONTAL BEND
- C. BEND = COMBINED BEND
- VA = VERTICAL ANGLE (in grad)
- HA = HORIZONTAL ANGLE (in grad)
- CA = COMBINED ANGLE (in grad)
- AV = AIR VALVE
- WV = WASHOUT VALVE
- LV = LINE VALVE



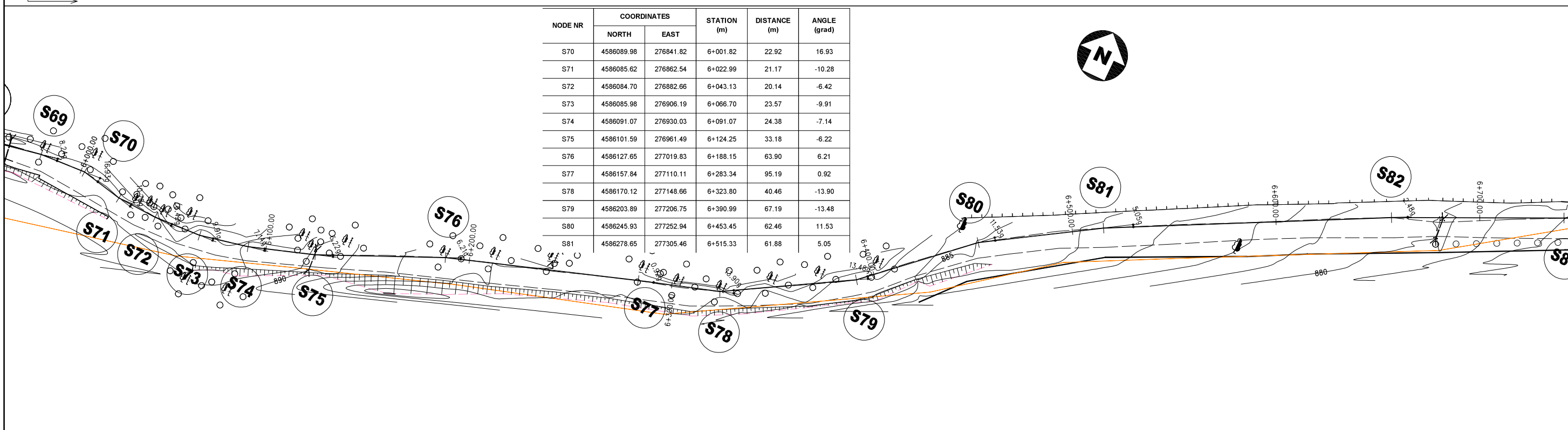
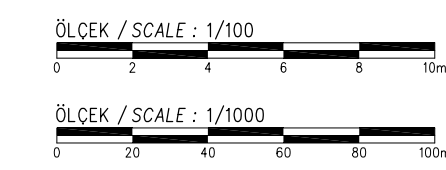
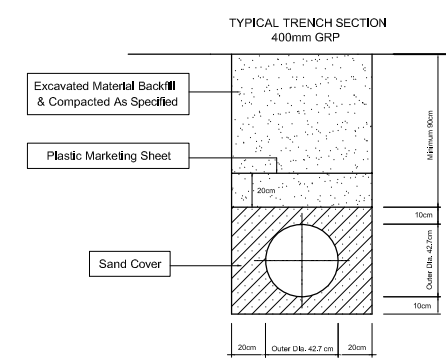
NODE NR	COORDINATES		STATION (m)	DISTANCE (m)	ANGLE (grad)
	NORTH	EAST			
S54	4585943.26	276287.78	5+418.19	60.05	7.27
S55	4585951.79	276316.18	5+447.85	28.65	13.32
S56	4585953.46	276336.41	5+468.15	20.30	10.19
S57	4585950.39	276375.86	5+507.71	39.56	-1.45
S58	4585947.45	276429.51	5+561.44	53.73	-5.69
S59	4585947.87	276441.65	5+573.59	12.15	-8.11
S60	4585951.65	276464.80	5+597.05	23.46	-9.79
S61	4585959.26	276488.08	5+621.54	24.49	-5.12
S62	4585962.22	276566.83	5+706.90	85.37	3.37
S63	458610.56	276618.12	5+761.38	54.48	6.21
S64	4586024.81	276674.86	5+819.88	58.50	-9.59
S65	4586040.18	276711.59	5+859.70	39.82	-7.79
S66	4586056.82	276740.73	5+893.25	33.55	-3.79
S67	4586075.41	276769.21	5+927.27	34.02	14.28
S68	4586083.20	276790.27	5+949.71	22.44	10.58
S69	4586088.65	276818.94	5+978.91	29.19	8.24



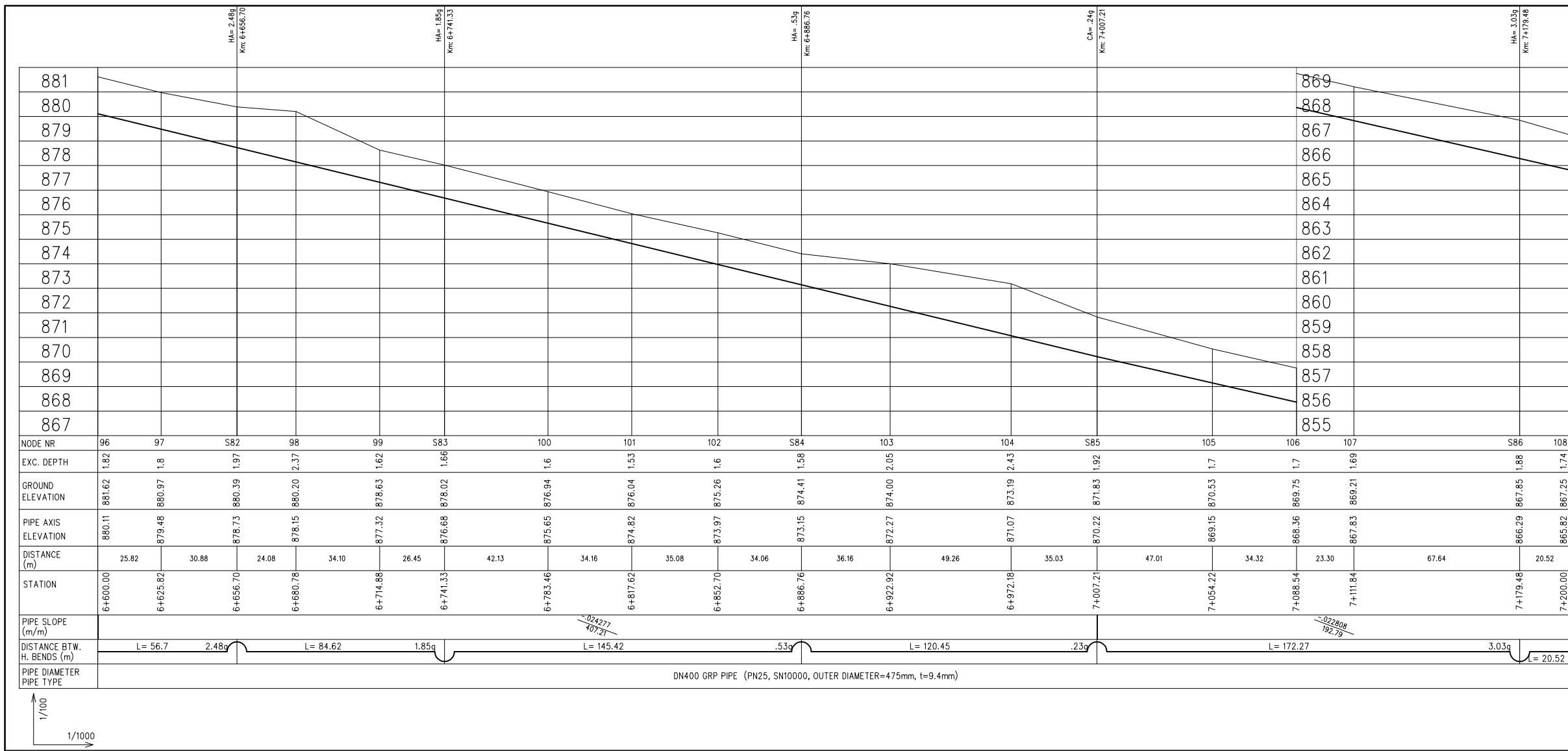
SPECIAL ASSISTANCE FOR PROJECT IMPLEMENTATION (SAPI) FOR THE PROVINCIAL CITIES WATER SUPPLY AND SEWERAGE PROJECT IN THE REPUBLIC OF AZERBAIJAN	AZERSU JOINT STOCK COMPANY, the Republic of Azerbaijan		Site :	Facility :	Title :	Scale of Drawing :	Category - City	Facility Code - Number
	Japan International Cooperation Agency (JICA), Japan		Gusar	Plan & Profile of TL From Gusar River Left Bank Water Source to Zone I Serv. Res.	Between KM: 5+400.00 - 6+000.00	1/1000	SU-GUS-	09-02(10)
						Original Size of Paper : A1	Date : March 2010	Revision Number : Rev.0



- LEGEND**
- V. BEND = VERTICAL BEND
 - H. BEND = HORIZONTAL BEND
 - C. BEND = COMBINED BEND
 - VA = VERTICAL ANGLE (in grad)
 - HA = HORIZONTAL ANGLE (in grad)
 - CA = COMBINED ANGLE (in grad)
 - AV = AIR VALVE
 - WV = WASHOUT VALVE
 - LV = LINE VALVE

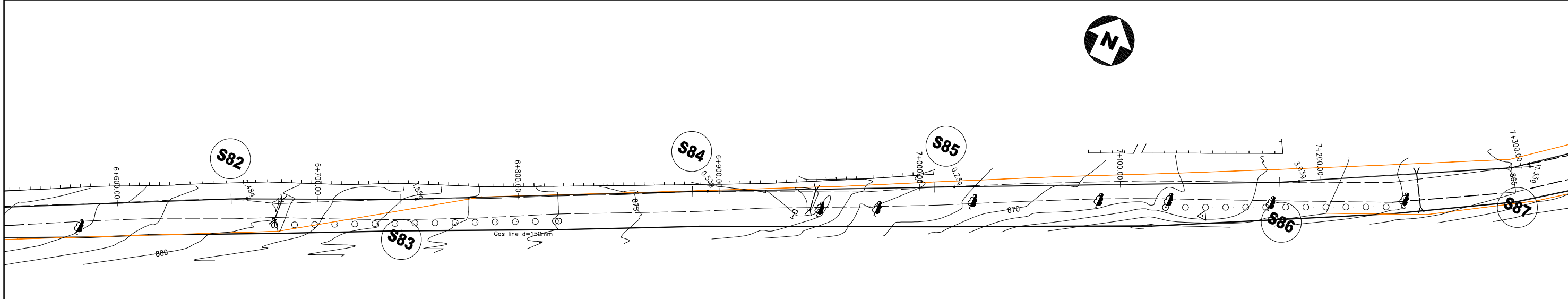
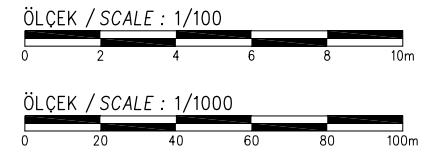
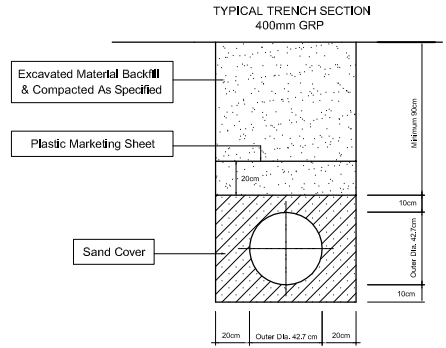


SPECIAL ASSISTANCE FOR PROJECT IMPLEMENTATION (SAPI) FOR THE PROVINCIAL CITIES WATER SUPPLY AND SEWERAGE PROJECT IN THE REPUBLIC OF AZERBAIJAN	AZERSU JOINT STOCK COMPANY, the Republic of Azerbaijan		Site :	Facility :	Title :	Scale of Drawing :	Category - City	Facility Code - Number
	Japan International Cooperation Agency (JICA), Japan		Gusar	Plan & Profile of TL From Gusar River Left Bank Water Source to Zone I Serv. Res.	Between KM: 6+000.00 - 6+600.00	1/1000	SU-GUS-	09-02(11)
						Original Size of Paper : A1	Date	Revision Number
							March 2010	Rev.0



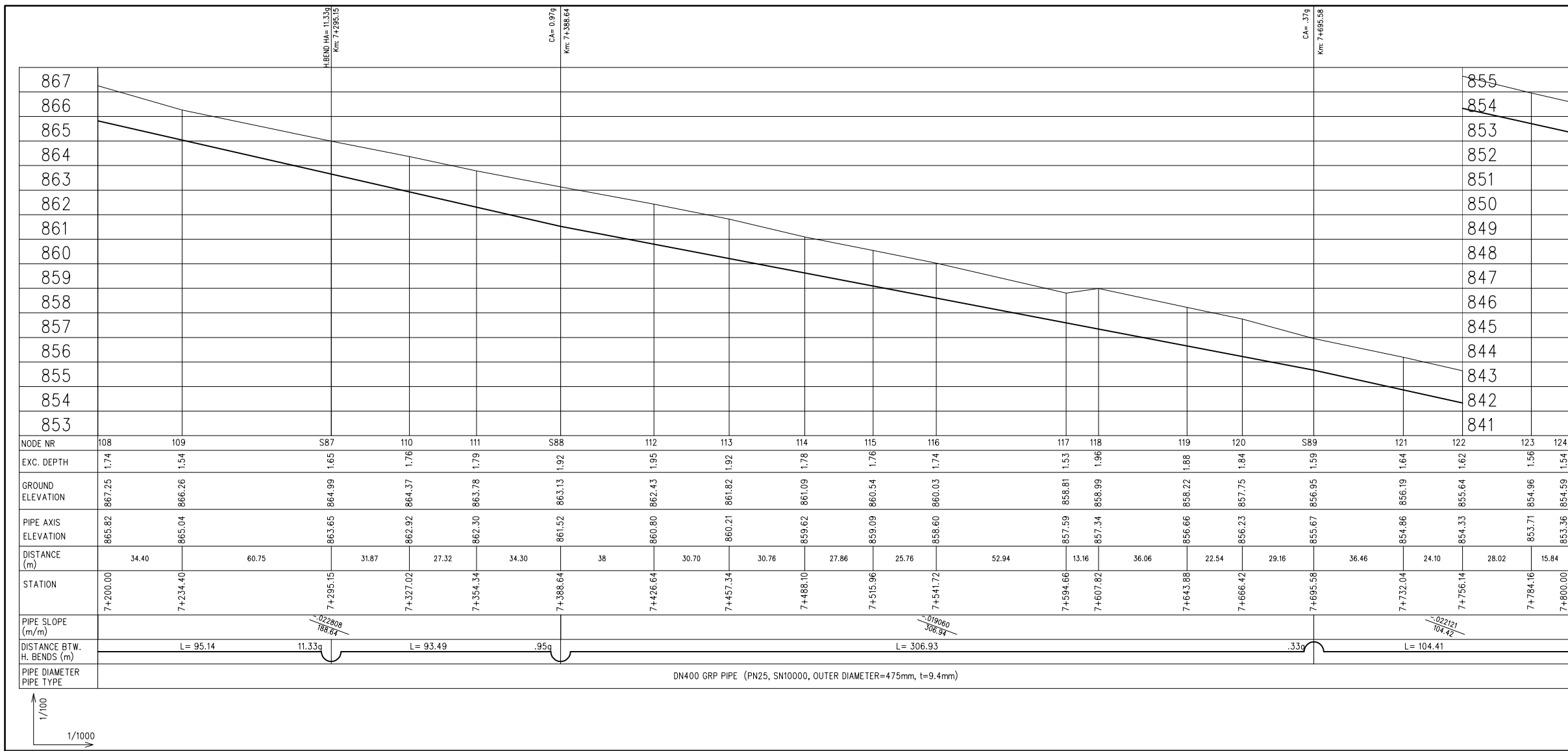
LEGEND

- △ AIR VALVE
- ▽ WASHOUT VALVE
- ⊗ LINE VALVE
- V. BEND = VERTICAL BEND
- H. BEND = HORIZONTAL BEND
- C. BEND = COMBINED BEND
- VA = VERTICAL ANGLE (in grad)
- HA = HORIZONTAL ANGLE (in grad)
- CA = COMBINED ANGLE (in grad)
- AV = AIR VALVE
- WV = WASHOUT VALVE
- LV = LINE VALVE

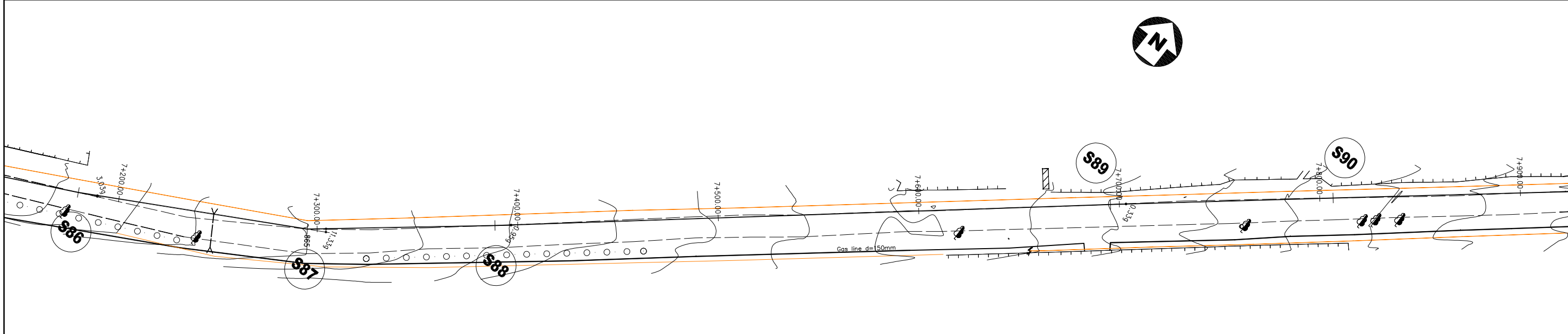
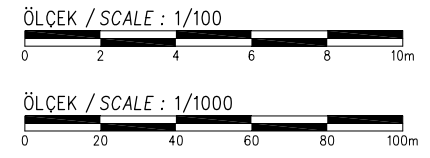
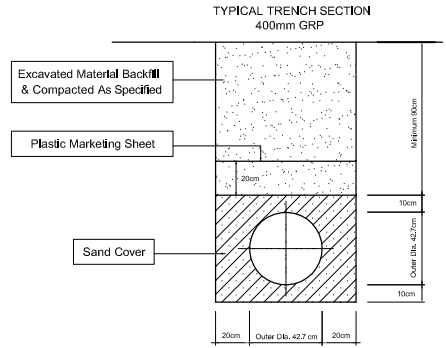


NODE NR	COORDINATES		STATION (m)	DISTANCE (m)	ANGLE (grad)
	NORTH	EAST			
S82	4586343.68	277430.99	6+656.70	141.37	2.48
S83	4586379.64	277507.59	6+741.33	84.63	-1.85
S84	4586445.26	277637.39	6+886.76	145.44	0.53
S85	4586498.69	277745.33	7+007.21	120.44	0.23
S86	4586574.57	277899.99	7+179.48	172.28	-3.03

SPECIAL ASSISTANCE FOR PROJECT IMPLEMENTATION (SAPI) FOR THE PROVINCIAL CITIES WATER SUPPLY AND SEWERAGE PROJECT IN THE REPUBLIC OF AZERBAIJAN	AZERSU JOINT STOCK COMPANY, the Republic of Azerbaijan Japan International Cooperation Agency (JICA), Japan	Site :	Facility :	Title :	Scale of Drawing :	Category - City	Facility Code - Number
	Gusar	Gusar River Left Bank Water Source to Zone I Serv. Res.	Between KM: 6+600.00 - 7+200.00	1/1000	SU-GUS-09-02(12)		
				Original Size of Paper :	Date	Revision Number	
				A1	March 2010	Rev.0	

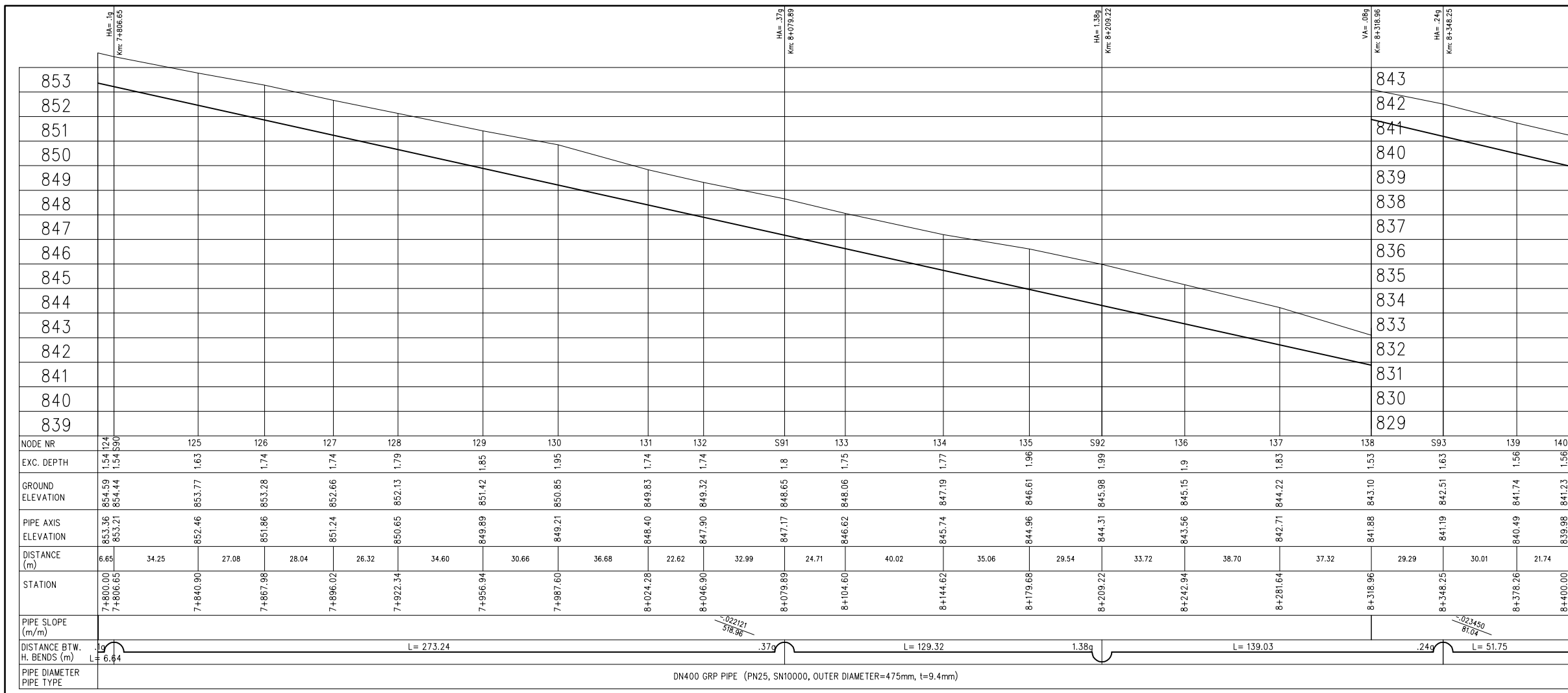


- LEGEND**
- AIR VALVE
 - ◇ WASHOUT VALVE
 - ⊗ LINE VALVE
 - V. BEND = VERTICAL BEND
 - H. BEND = HORIZONTAL BEND
 - C. BEND = COMBINED BEND
 - VA = VERTICAL ANGLE (in grad)
 - HA = HORIZONTAL ANGLE (in grad)
 - CA = COMBINED ANGLE (in grad)
 - AV = AIR VALVE
 - WV = WASHOUT VALVE
 - LV = LINE VALVE

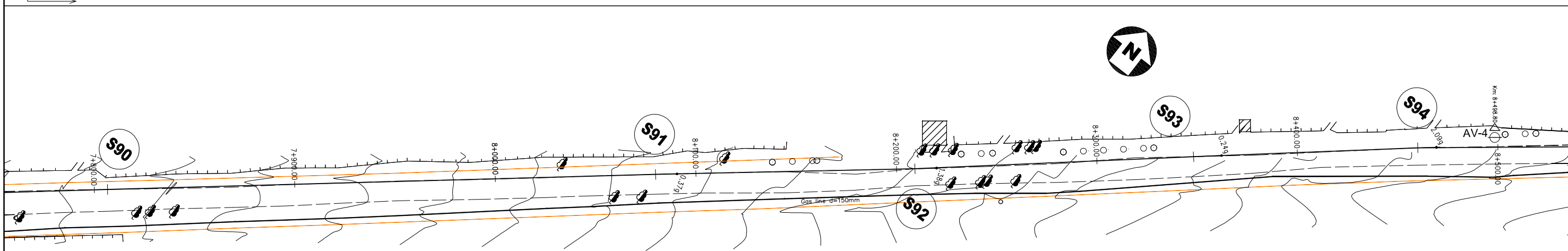
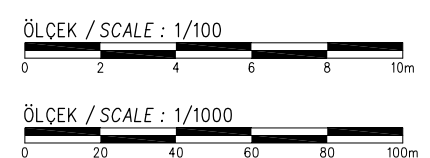
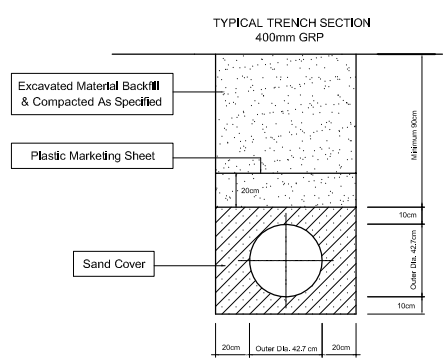


NODE NR	COORDINATES		STATION (m)	DISTANCE (m)	ANGLE (grad)
	NORTH	EAST			
S87	4586630.40	278001.29	7+295.15	115.67	-11.33
S88	4586689.31	278073.90	7+388.64	93.50	-0.95
S89	4586886.25	278309.32	7+695.58	306.94	0.33

SPECIAL ASSISTANCE FOR PROJECT IMPLEMENTATION (SAPI) FOR THE PROVINCIAL CITIES WATER SUPPLY AND SEWERAGE PROJECT IN THE REPUBLIC OF AZERBAIJAN	AZERSU JOINT STOCK COMPANY, the Republic of Azerbaijan		Site :	Facility :	Title :	Scale of Drawing :	Category - City	Facility Code - Number
	Japan International Cooperation Agency (JICA), Japan		Gusar	Plan & Profile of TL From Gusar River Left Bank Water Source to Zone I Serv. Res.	Between KM: 7+200.00 - 7+800.00	1/1000	SU-GUS-	09-02(13)
						Original Size of Paper : A1	Date	Revision Number
							March 2010	Rev.0

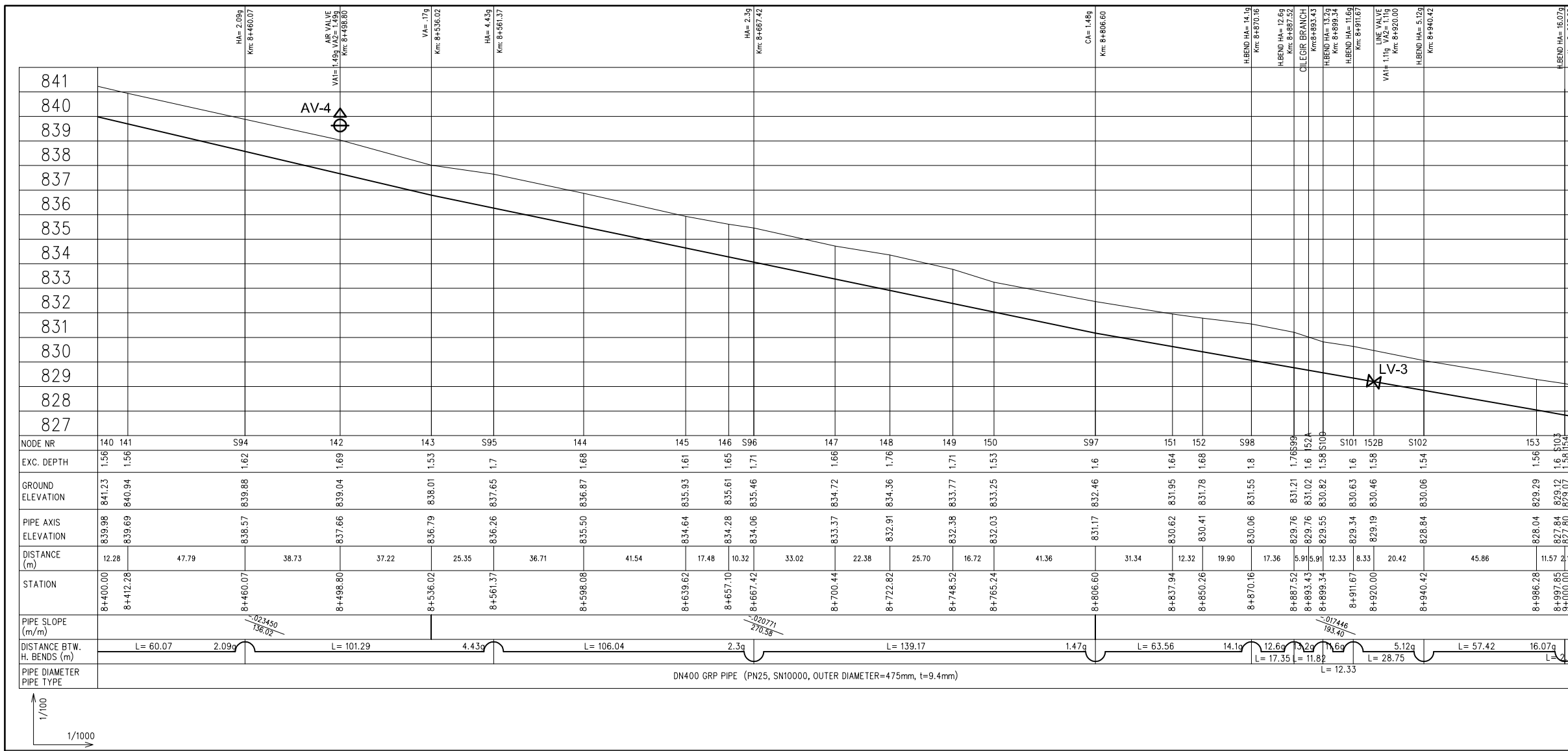


- LEGEND**
- △ AIR VALVE
 - WASHOUT VALVE
 - ▽ LINE VALVE
 - V. BEND = VERTICAL BEND
 - H. BEND = HORIZONTAL BEND
 - C. BEND = COMBINED BEND
 - VA = VERTICAL ANGLE (in grad)
 - HA = HORIZONTAL ANGLE (in grad)
 - CA = COMBINED ANGLE (in grad)
 - AV = AIR VALVE
 - WV = WASHOUT VALVE
 - LV = LINE VALVE



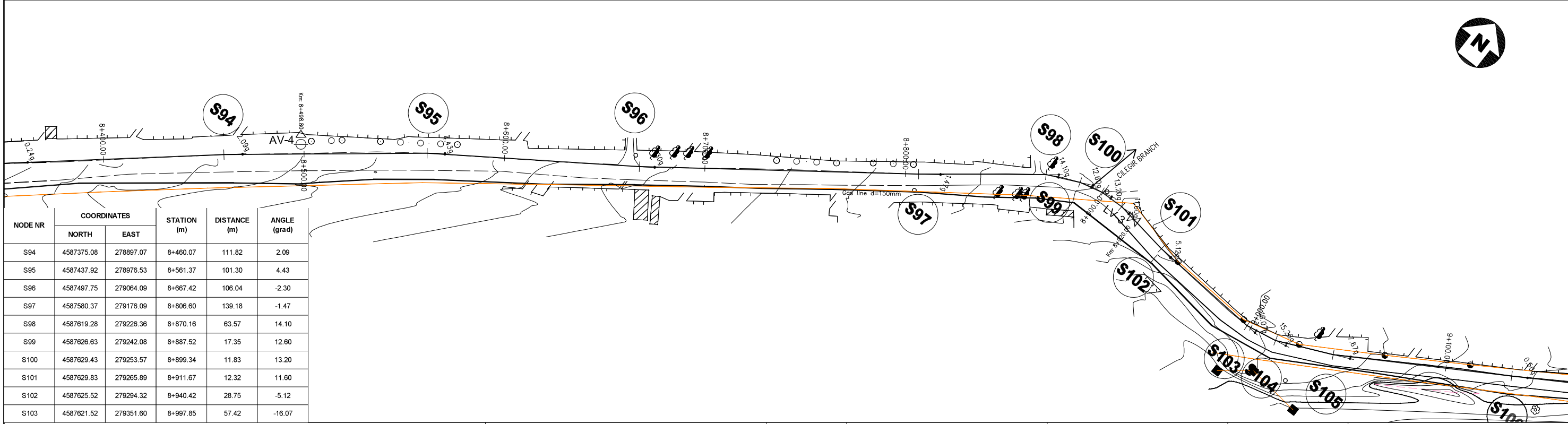
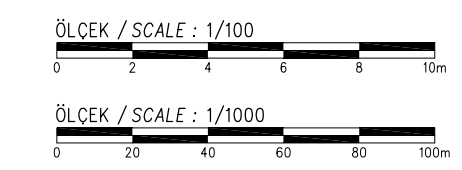
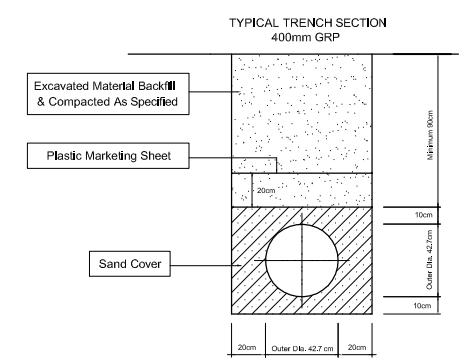
NODE NR	COORDINATES		STATION (m)	DISTANCE (m)	ANGLE (grad)
	NORTH	EAST			
S90	4586957.07	278394.89	7+806.65	111.07	0.10
S91	4587130.97	278605.64	8+079.89	273.24	0.37
S92	4587212.70	278705.88	8+209.22	129.33	-1.38
S93	4587302.88	278811.69	8+348.25	139.03	0.24

SPECIAL ASSISTANCE FOR PROJECT IMPLEMENTATION (SAPI) FOR THE PROVINCIAL CITIES WATER SUPPLY AND SEWERAGE PROJECT IN THE REPUBLIC OF AZERBAIJAN	AZERSU JOINT STOCK COMPANY, the Republic of Azerbaijan		Site :	Facility :	Title :	Scale of Drawing :	Category - City	Facility Code - Number
	Japan International Cooperation Agency (JICA), Japan		Gusar	Plan & Profile of TL From Gusar River Left Bank Water Source to Zone I Serv. Res.	Between KM: 7+800.00 - 8+400.00	1/1000	SU-GUS-	09-02(14)
						Original Size of Paper : A1	Date	Revision Number
							March 2010	Rev.0



LEGEND

- ⊕ AIR VALVE
- ⊕ WASHOUT VALVE
- ⊕ LINE VALVE
- V. BEND = VERTICAL BEND
- H. BEND = HORIZONTAL BEND
- C. BEND = COMBINED BEND
- VA = VERTICAL ANGLE (in grad)
- HA = HORIZONTAL ANGLE (in grad)
- CA = COMBINED ANGLE (in grad)
- AV = AIR VALVE
- WV = WASHOUT VALVE
- LV = LINE VALVE



NODE NR	COORDINATES		STATION (m)	DISTANCE (m)	ANGLE (grad)
	NORTH	EAST			
S94	4587375.08	278897.07	8+460.07	111.82	2.09
S95	4587437.92	278976.53	8+561.37	101.30	4.43
S96	4587497.75	279064.09	8+667.42	106.04	-2.30
S97	4587580.37	279176.09	8+806.60	139.18	-1.47
S98	4587619.28	279226.36	8+870.16	63.57	14.10
S99	4587626.63	279242.08	8+887.52	17.35	12.60
S100	4587629.43	279253.57	8+899.34	11.83	13.20
S101	4587629.83	279265.89	8+911.67	12.32	11.60
S102	4587625.52	279294.32	8+940.42	28.75	-5.12
S103	4587621.52	279351.60	8+997.85	57.42	-16.07

SPECIAL ASSISTANCE FOR PROJECT IMPLEMENTATION (SAPI) FOR THE PROVINCIAL CITIES WATER SUPPLY AND SEWERAGE PROJECT IN THE REPUBLIC OF AZERBAIJAN	AZERSU JOINT STOCK COMPANY, the Republic of Azerbaijan Japan International Cooperation Agency (JICA), Japan	Site : Gusar	Facility : Plan & Profile of TL From Gusar River Left Bank Water Source to Zone I Serv. Res.	Title : Between KM: 8+400.00 - 9+000.00	Scale of Drawing : 1/1000 Original Size of Paper : A1	Category - City SU-GUS-	Facility Code - Number 09-02(15)
						Date March 2010	Revision Number Rev.0