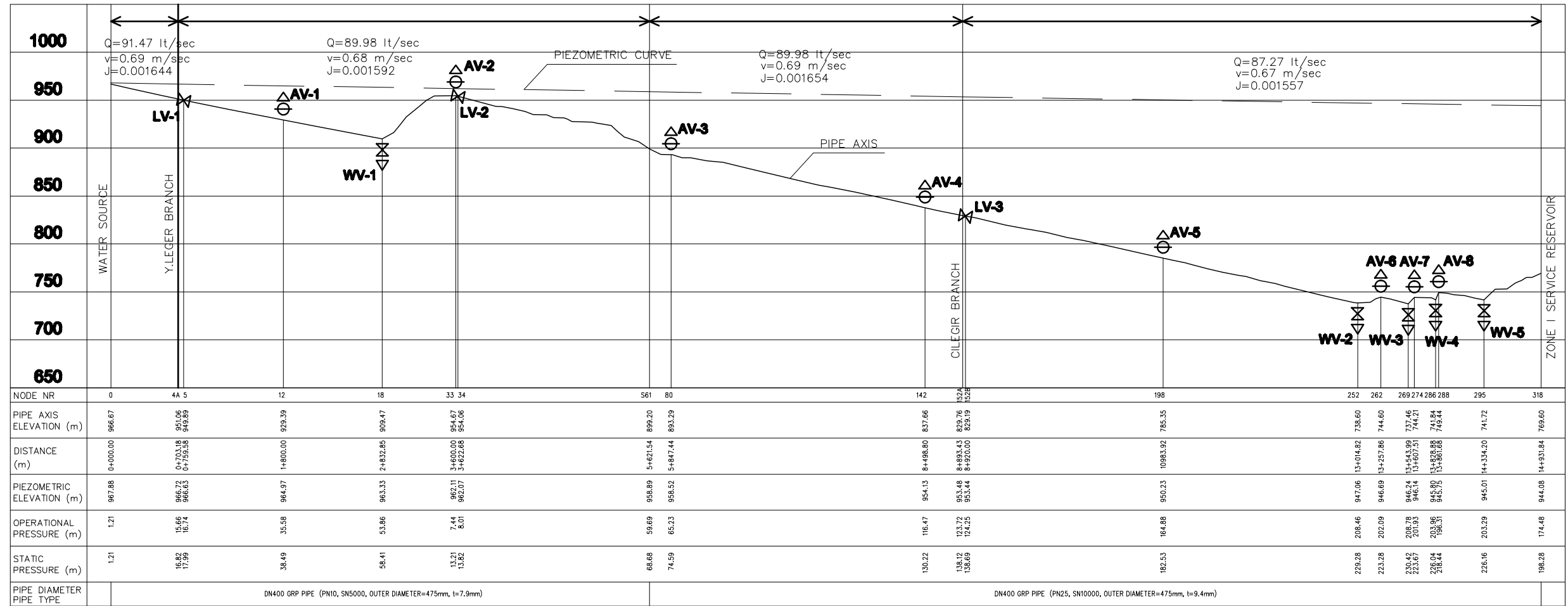


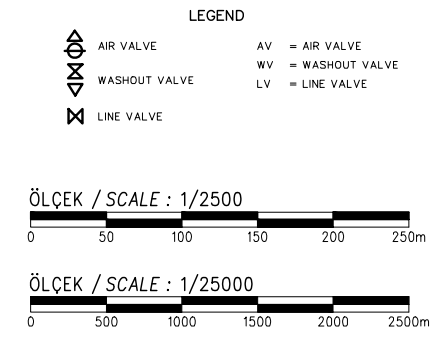
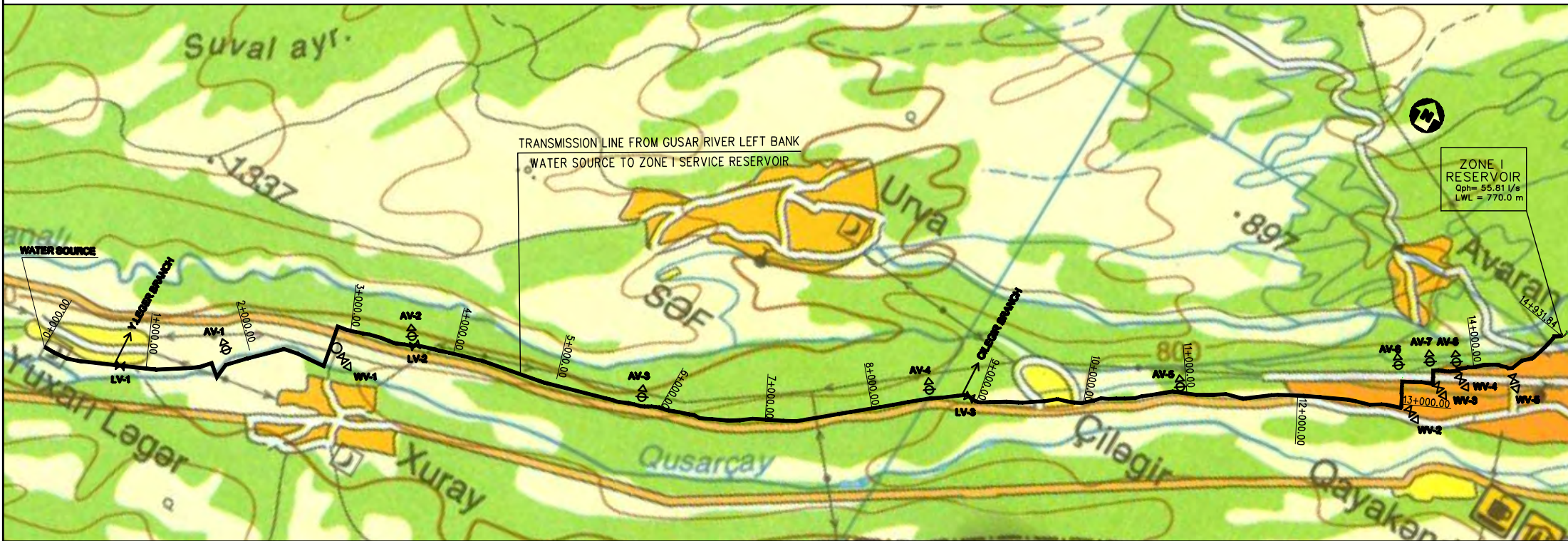
GUSAR

QUSAR

Gusar Transmission Lines From Water Source to Left Bank Zone I Service Reservoir

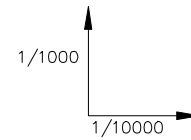
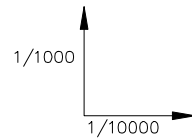
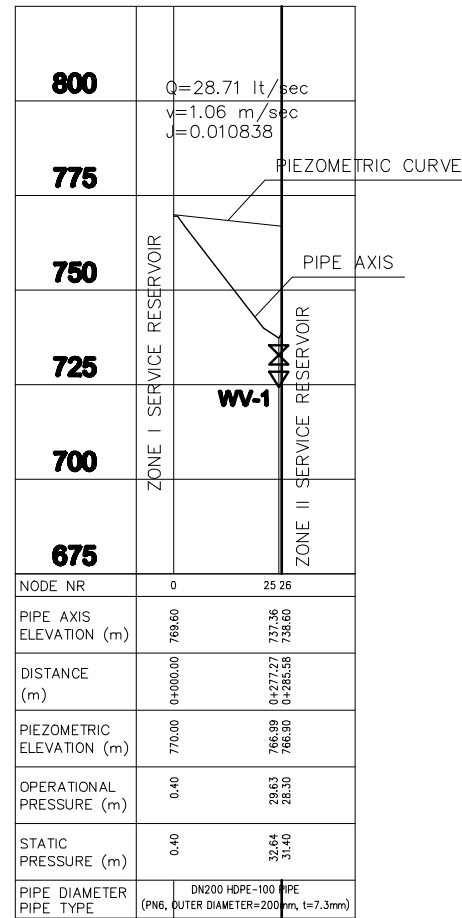


1/2500
1/25000

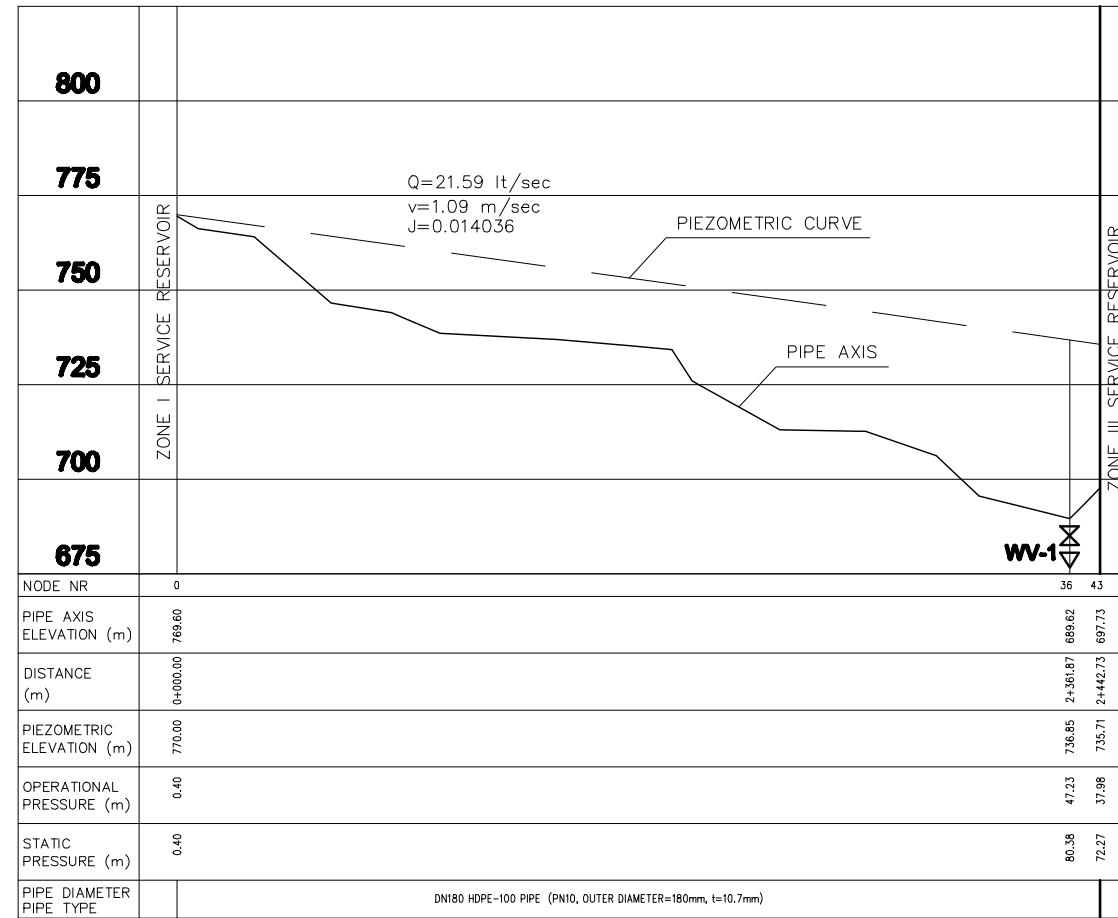


SPECIAL ASSISTANCE FOR PROJECT IMPLEMENTATION (SAPI) FOR THE PROVINCIAL CITIES WATER SUPPLY AND SEWERAGE PROJECT IN THE REPUBLIC OF AZERBAIJAN	AZERSU JOINT STOCK COMPANY, the Republic of Azerbaijan	Site :	Facility :	Title :	Scale of Drawing :	Category - City	Facility Code - Number
	Japan International Cooperation Agency (JICA), Japan	Gusar	Gusar Transmission Lines	Plan & Hydraulic Profile (1/3)	1/25000	SU-GUS-	09-01(01)
					Original Size of Paper : A1	Date	Revision Number
						March 2010	Rev.0

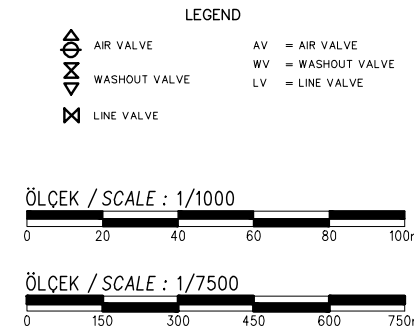
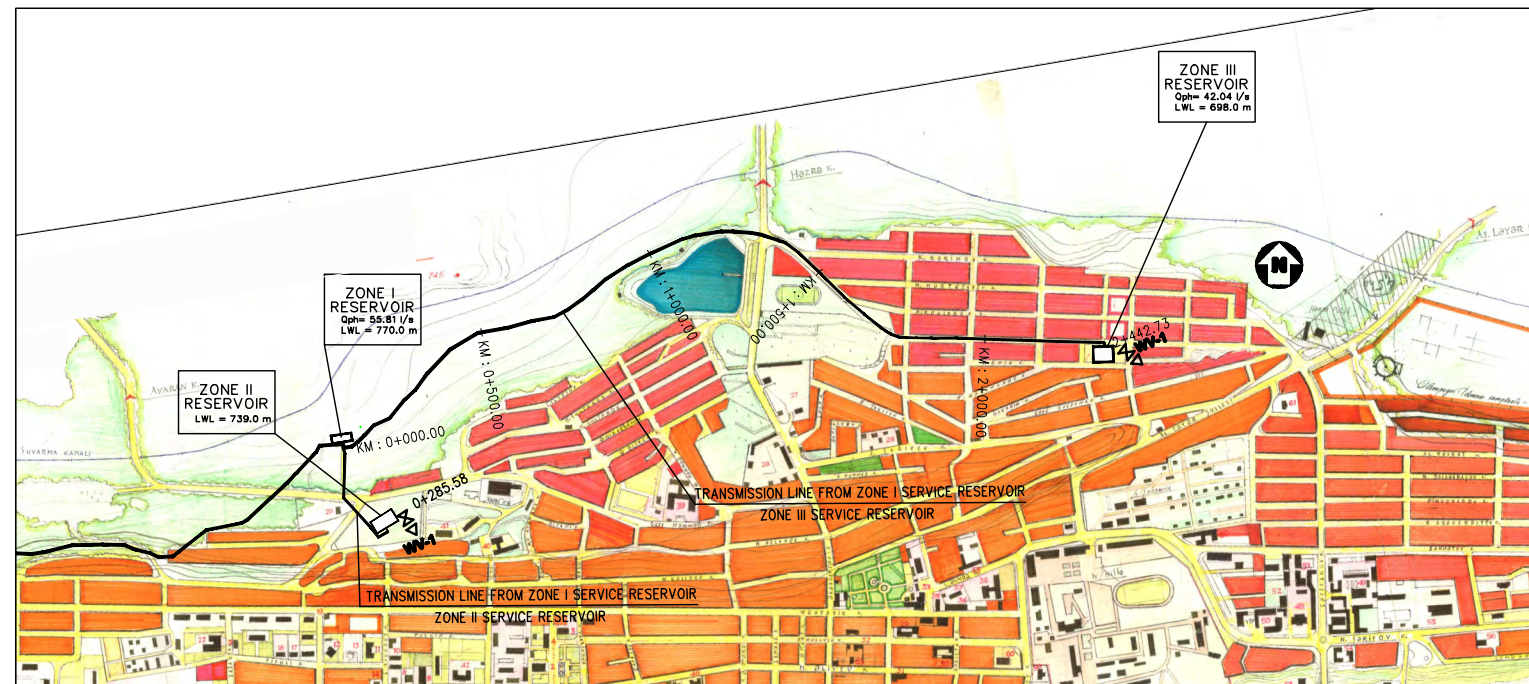
**Gusar Transmission Lines From Left Bank
Zone I Service Reservoir to Zone II Service Reservoir**



**Gusar Transmission Lines From Left Bank
Zone I Service Reservoir to Zone III Service Reservoir**



DN180 HDPE-100 PIPE (PN10, OUTER DIAMETER=180mm, t=10.7mm)



SPECIAL ASSISTANCE FOR PROJECT IMPLEMENTATION (SAPI) FOR THE PROVINCIAL CITIES WATER SUPPLY AND SEWERAGE PROJECT IN THE REPUBLIC OF AZERBAIJAN

AZERSU JOINT STOCK COMPANY, the Republic of Azerbaijan
Japan International Cooperation Agency (JICA), Japan

Site : Gusar

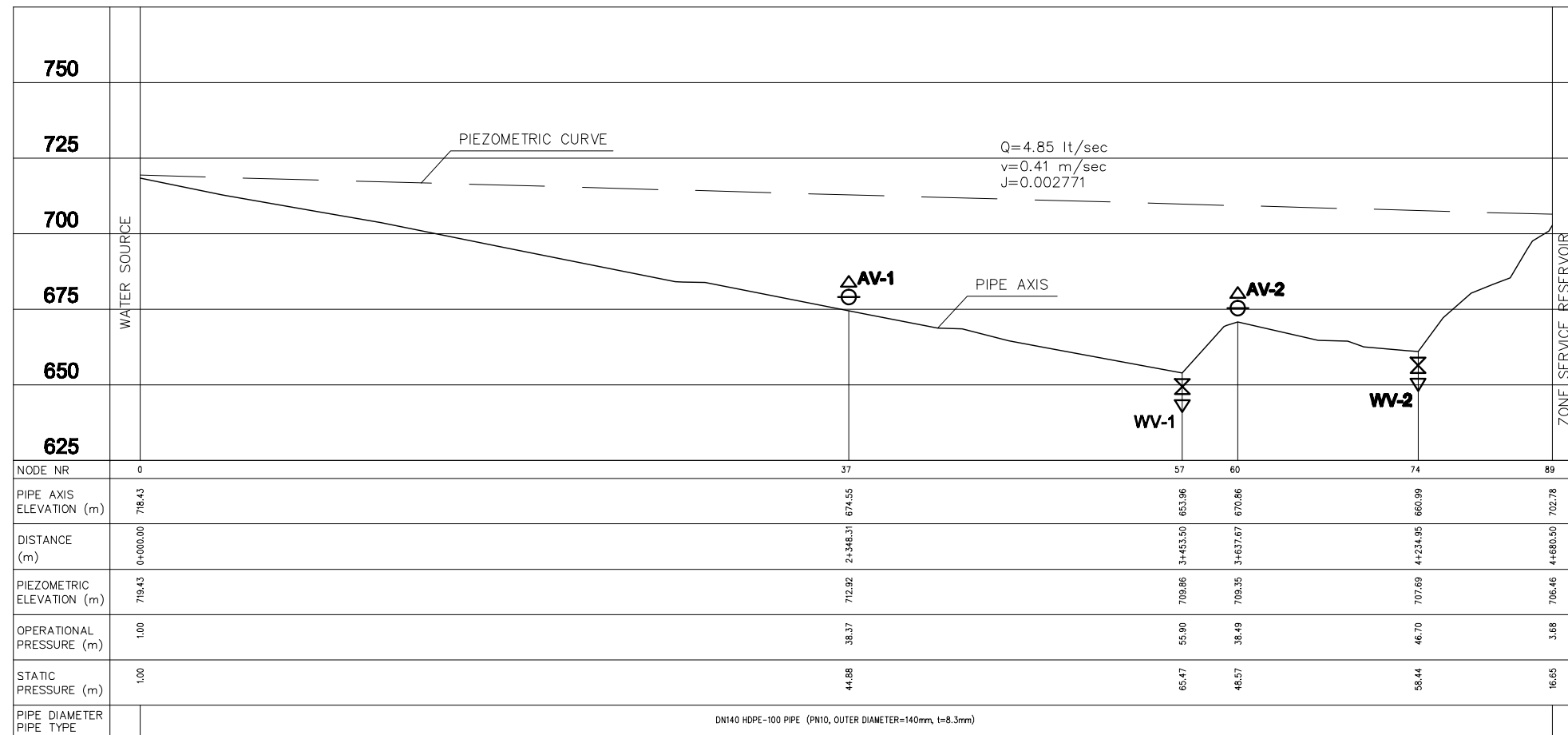
Facility : Gusar Transmission Lines

Title : Plan & Hydraulic Profile (2/3)

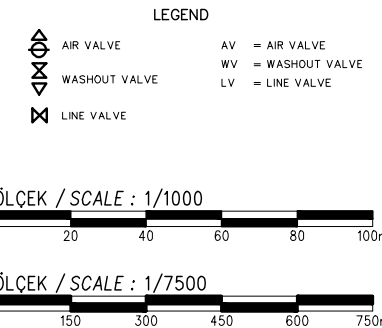
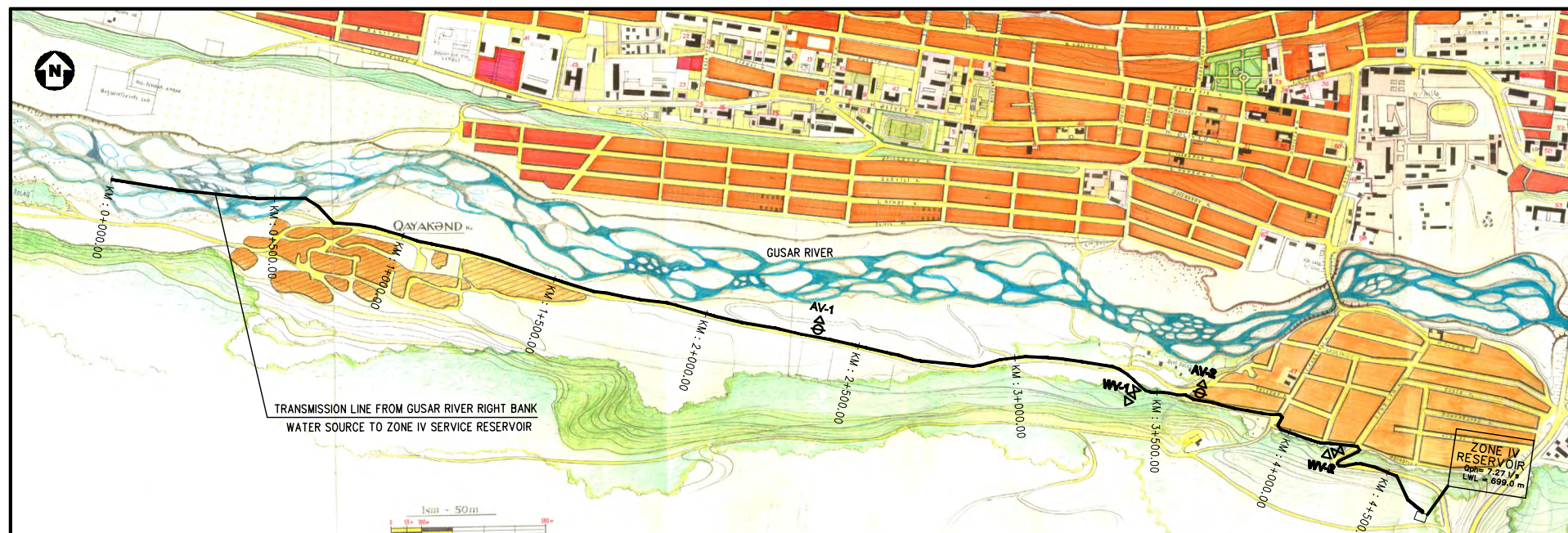
Scale of Drawing : 1/10000
Original Size of Paper : A1

Category - City : SU-GUS-
Facility Code - Number : 09-01(02)
Date : March 2010
Revision Number : Rev.0

**Gusar Transmission Lines From Righth Bank
Water Source to Zone Service Reservoir**



1/1000
1/10000



**SPECIAL ASSISTANCE FOR PROJECT IMPLEMENTATION (SAPI) FOR
THE PROVINCIAL CITIES WATER SUPPLY AND SEWERAGE PROJECT
IN THE REPUBLIC OF AZERBAIJAN**

**AZERSU JOINT STOCK COMPANY,
the Republic of Azerbaijan
Japan International Cooperation Agency
(JICA), Japan**

Site :
Gusar

Facility :
Gusar Transmission Lines

Title :
Plan & Hydraulic Profile (3/3)

Scale of
Drawing :
1/10000

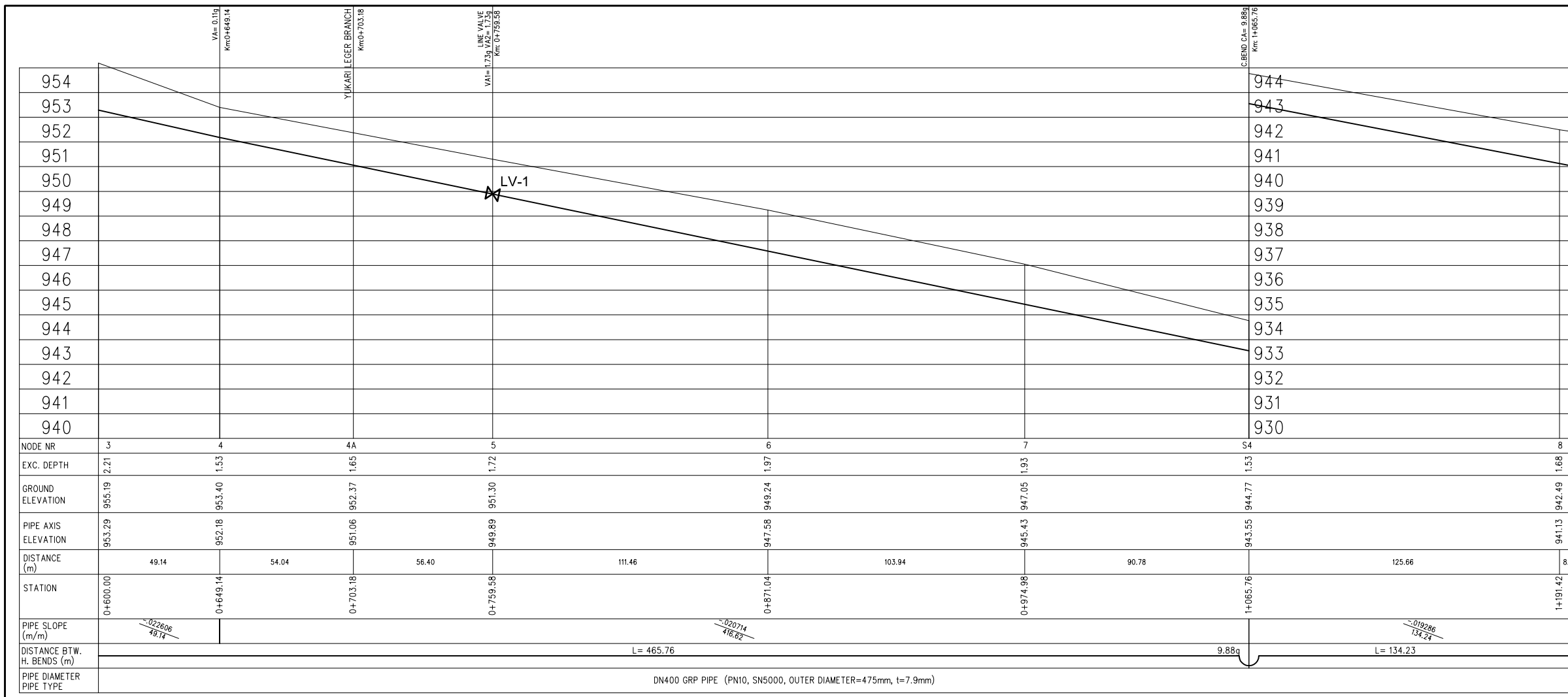
Original Size of
Paper :
A1

Category - City
SU-GUS-

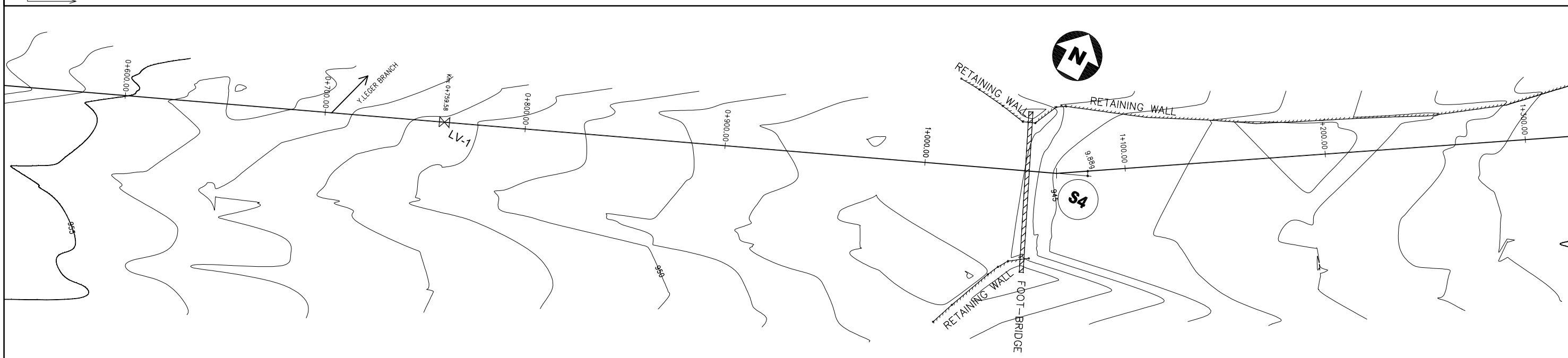
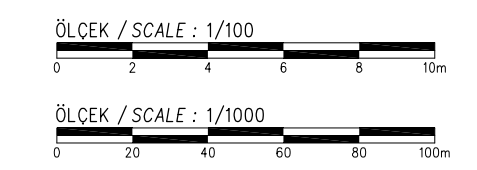
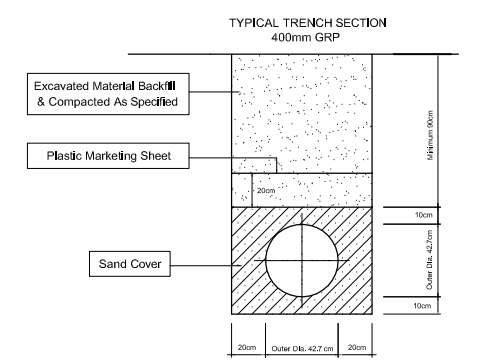
Facility Code -
Number
09-01(03)

Date
March 2010

Revision Number
Rev.0

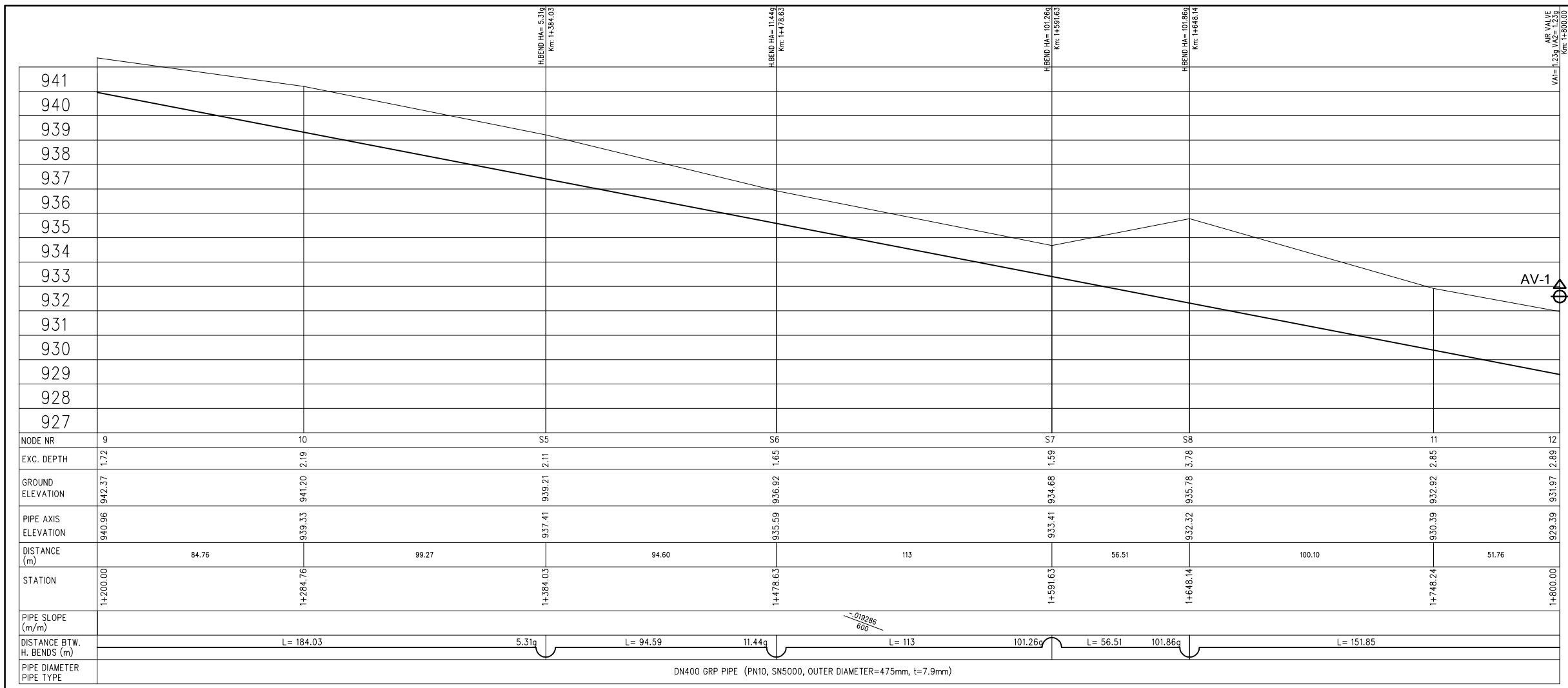


- LEGEND**
- △ AIR VALVE
 - ◇ WASHOUT VALVE
 - ⊗ LINE VALVE
 - V. BEND = VERTICAL BEND
 - H. BEND = HORIZONTAL BEND
 - C. BEND = COMBINED BEND
 - VA = VERTICAL ANGLE (in grad)
 - HA = HORIZONTAL ANGLE (in grad)
 - CA = COMBINED ANGLE (in grad)
 - AV = AIR VALVE
 - WV = WASHOUT VALVE
 - LV = LINE VALVE



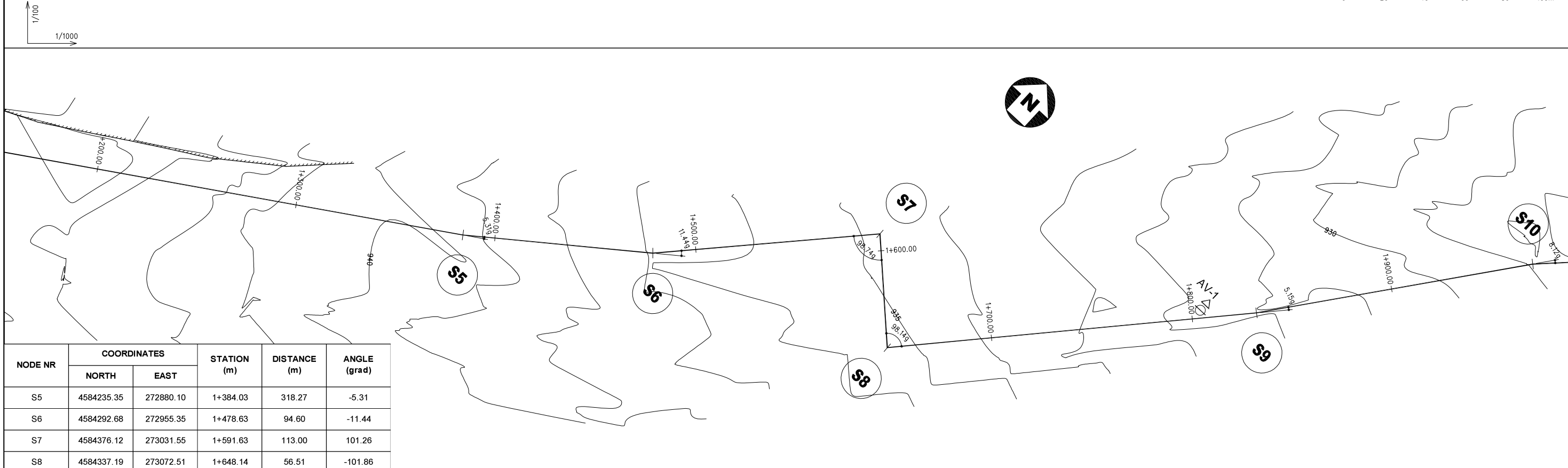
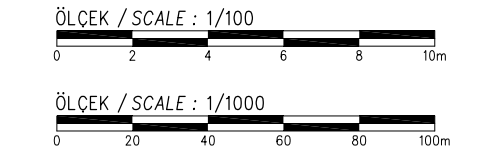
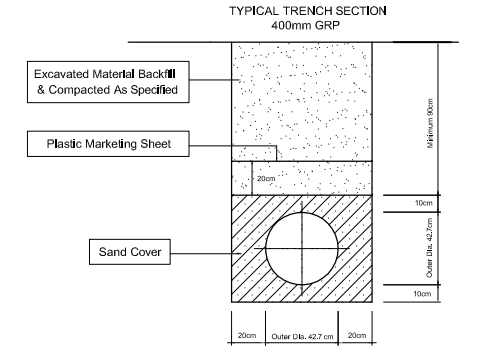
NODE NR	COORDINATES		STATION (m)	DISTANCE (m)	ANGLE (grad)
	NORTH	EAST			
S4	4584064.22	272611.74	1+065.76	725.15	-9.88

SPECIAL ASSISTANCE FOR PROJECT IMPLEMENTATION (SAPI) FOR THE PROVINCIAL CITIES WATER SUPPLY AND SEWERAGE PROJECT IN THE REPUBLIC OF AZERBAIJAN	AZERSU JOINT STOCK COMPANY, the Republic of Azerbaijan		Site : Gusar	Facility : Plan & Profile of TL From Gusar River Left Bank Water Source to Zone I Serv. Res.	Title : Between KM: 0+600.00 - 1+200.00	Scale of Drawing : 1/1000	Category - City : SU-GUS-	Facility Code - Number : 09-02(02)
	Japan International Cooperation Agency (JICA), Japan					Original Size of Paper : A1	Date : March 2010	Revision Number : Rev.0

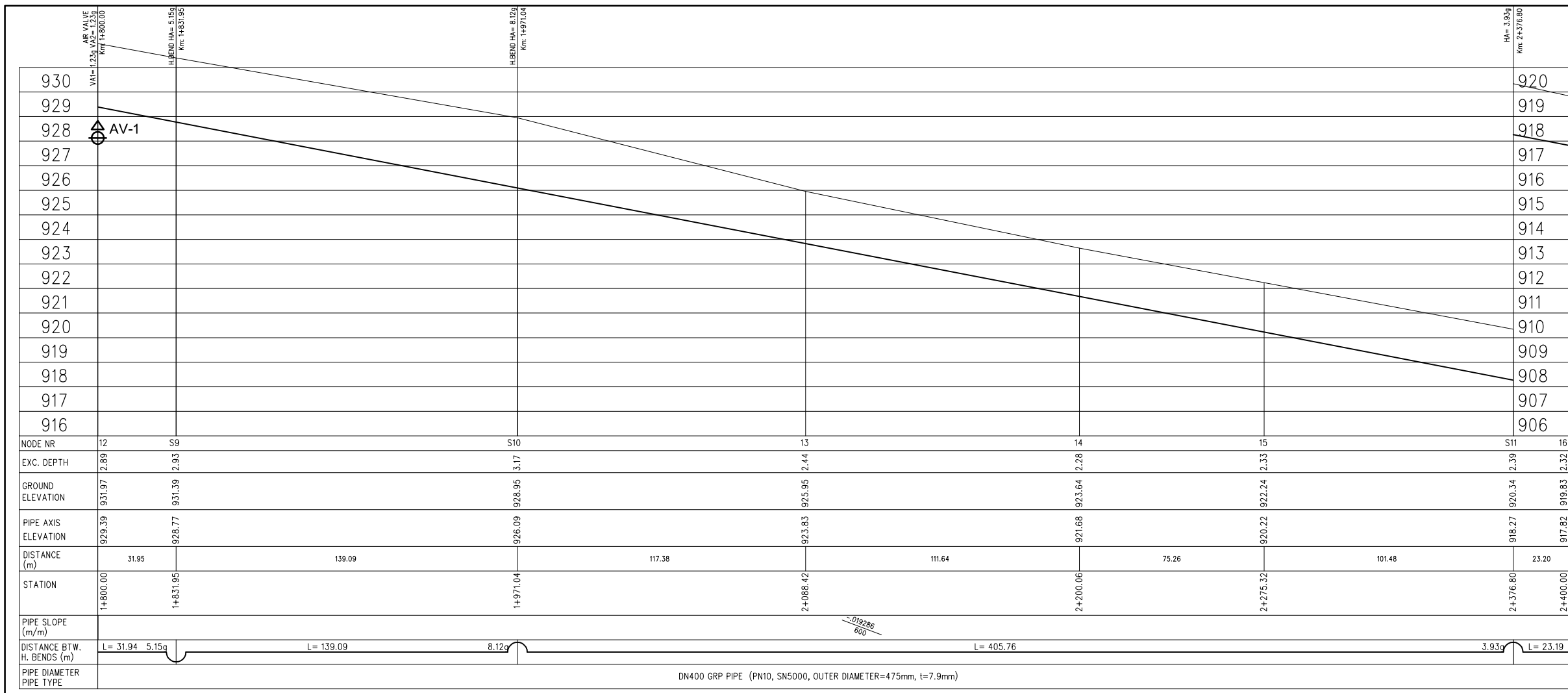


LEGEND

	AIR VALVE	V. BEND	= VERTICAL BEND
	WASHOUT VALVE	H. BEND	= HORIZONTAL BEND
	LINE VALVE	C. BEND	= COMBINED BEND
		VA	= VERTICAL ANGLE (in grad)
		HA	= HORIZONTAL ANGLE (in grad)
		CA	= COMBINED ANGLE (in grad)
		AV	= AIR VALVE
		WV	= WASHOUT VALVE
		LV	= LINE VALVE

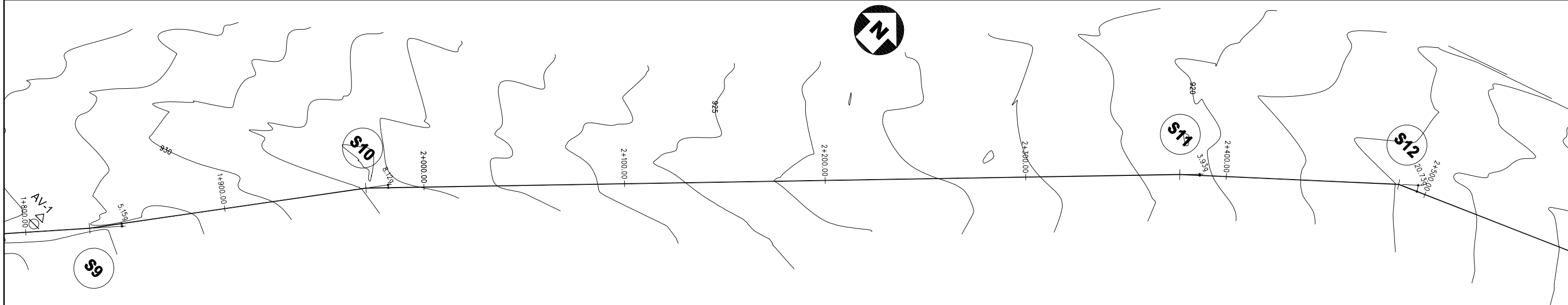
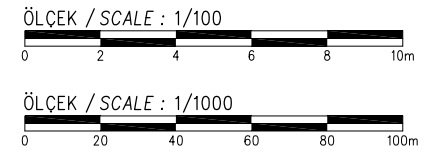
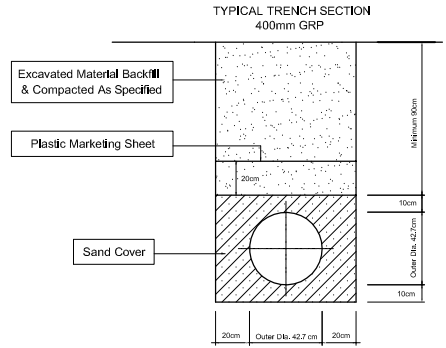


SPECIAL ASSISTANCE FOR PROJECT IMPLEMENTATION (SAPI) FOR THE PROVINCIAL CITIES WATER SUPPLY AND SEWERAGE PROJECT IN THE REPUBLIC OF AZERBAIJAN	AZERSU JOINT STOCK COMPANY, the Republic of Azerbaijan		Site :	Facility :	Title :	Scale of Drawing :	Category - City	Facility Code - Number
	Japan International Cooperation Agency (JICA), Japan		Gusar	Plan & Profile of TL From Gusar River Left Bank Water Source to Zone I Serv. Res.	Between KM: 1+200.00 - 1+800.00	1/1000	SU-GUS-	09-02(03)
						Original Size of Paper : A1	Date : March 2010	Revision Number : Rev.0



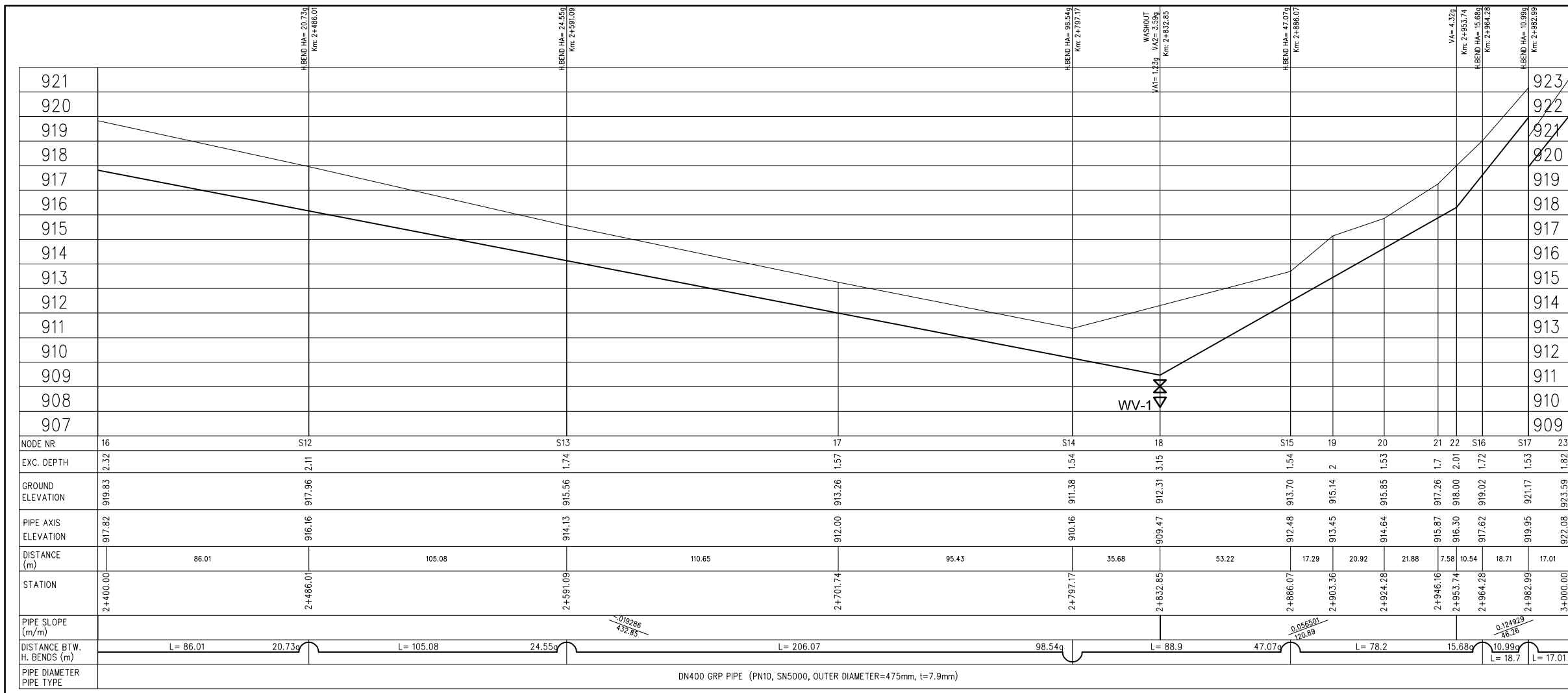
LEGEND

	AIR VALVE		V. BEND = VERTICAL BEND
	WASHOUT VALVE		H. BEND = HORIZONTAL BEND
	LINE VALVE		C. BEND = COMBINED BEND
		VA	= VERTICAL ANGLE (in grad)
		HA	= HORIZONTAL ANGLE (in grad)
		CA	= COMBINED ANGLE (in grad)
		AV	= AIR VALVE
		WV	= WASHOUT VALVE
		LV	= LINE VALVE

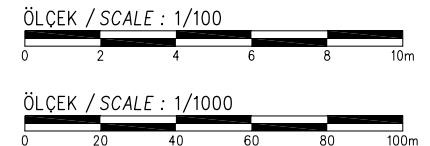
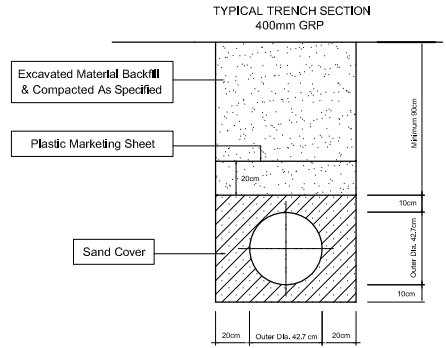


NODE NR	COORDINATES		STATION (m)	DISTANCE (m)	ANGLE (grad)
	NORTH	EAST			
S9	4584474.08	273195.18	1+831.95	183.81	-5.15
S10	4584584.83	273279.33	1+971.04	139.09	8.12
S11	4584874.06	273563.91	2+376.80	405.76	3.93

SPECIAL ASSISTANCE FOR PROJECT IMPLEMENTATION (SAPI) FOR THE PROVINCIAL CITIES WATER SUPPLY AND SEWERAGE PROJECT IN THE REPUBLIC OF AZERBAIJAN	AZERSU JOINT STOCK COMPANY, the Republic of Azerbaijan		Site :	Facility :	Title :	Scale of Drawing :	Category - City	Facility Code - Number
	Japan International Cooperation Agency (JICA), Japan		Gusar	Plan & Profile of TL From Gusar River Left Bank Water Source to Zone I Serv. Res.	Between KM: 1+800.00 - 2+400.00	1/1000	SU-GUS-	09-02(04)
						Original Size of Paper : A1	Date	Revision Number
							March 2010	Rev.0



- LEGEND**
- V. BEND = VERTICAL BEND
 - H. BEND = HORIZONTAL BEND
 - C. BEND = COMBINED BEND
 - VA = VERTICAL ANGLE (in grad)
 - HA = HORIZONTAL ANGLE (in grad)
 - CA = COMBINED ANGLE (in grad)
 - AV = AIR VALVE
 - WV = WASHOUT VALVE
 - LV = LINE VALVE



NODE NR	COORDINATES		STATION (m)	DISTANCE (m)	ANGLE (grad)
	NORTH	EAST			
S12	4584947.04	273645.16	2+486.01	109.21	20.73
S13	4584988.55	273741.68	2+591.09	105.07	24.55
S14	4584992.78	273947.72	2+797.17	206.08	-98.54
S15	4585081.68	273947.94	2+886.07	88.90	47.07
S16	4585139.34	274000.78	2+964.28	78.21	15.68
S17	4585149.63	274016.41	2+982.99	18.71	10.99

SPECIAL ASSISTANCE FOR PROJECT IMPLEMENTATION (SAPI) FOR THE PROVINCIAL CITIES WATER SUPPLY AND SEWERAGE PROJECT IN THE REPUBLIC OF AZERBAIJAN	AZERSU JOINT STOCK COMPANY, the Republic of Azerbaijan		Site : Gusar	Facility : Plan & Profile of TL From Gusar River Left Bank	Title : Between KM: 2+400.00 - 3+000.00	Scale of Drawing : 1/1000	Category - City : SU-GUS-	Facility Code - Number : 09-02(05)
	Japan International Cooperation Agency (JICA), Japan			Water Source to Zone I Serv. Res.		Original Size of Paper : A1	Date : March 2010	Revision Number : Rev.0