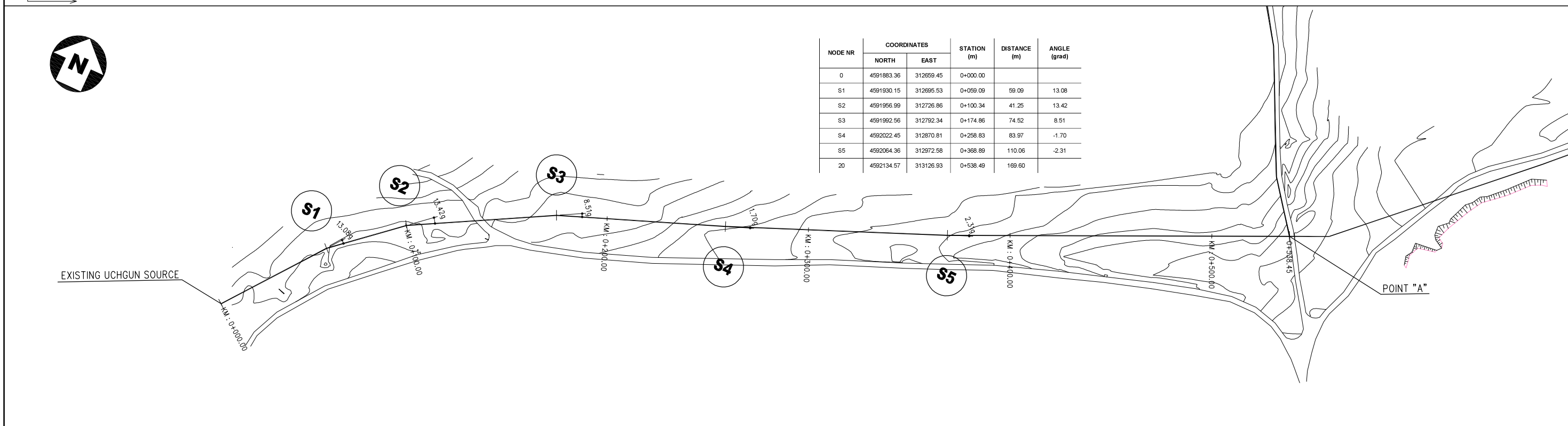
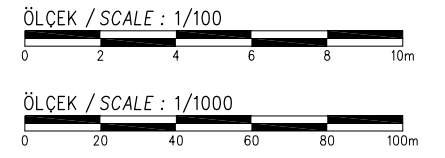
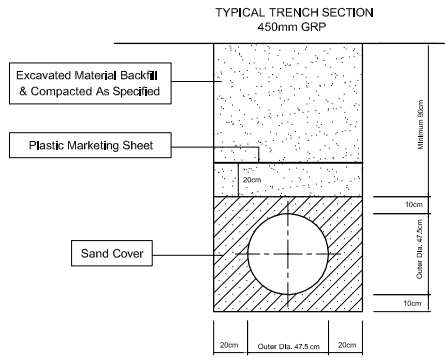
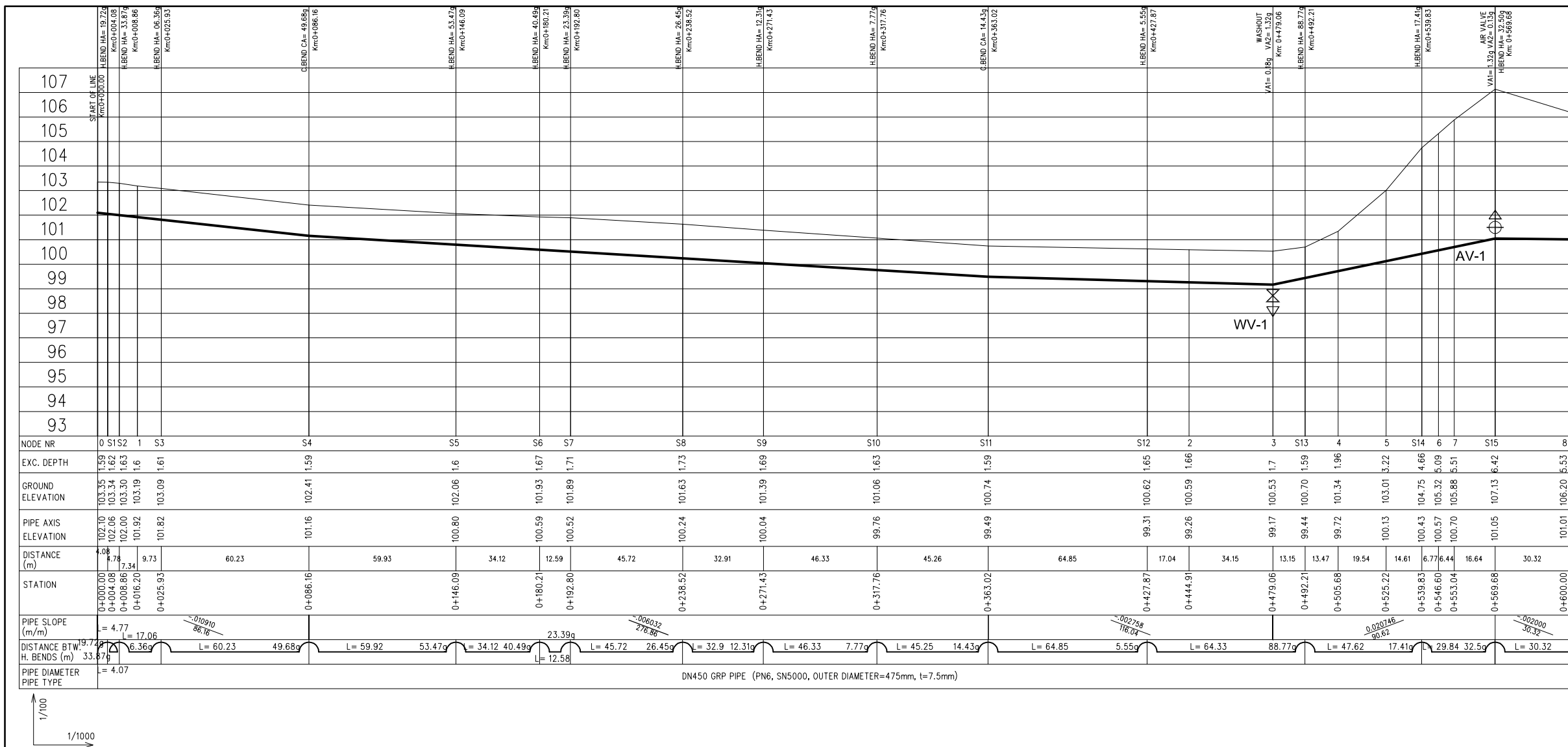


- LEGEND**
- AIR VALVE
 - WASHOUT VALVE
 - LINE VALVE
 - V. BEND = VERTICAL BEND
 - H. BEND = HORIZONTAL BEND
 - C. BEND = COMBINED BEND
 - VA = VERTICAL ANGLE (in grad)
 - HA = HORIZONTAL ANGLE (in grad)
 - CA = COMBINED ANGLE (in grad)
 - AV = AIR VALVE
 - WV = WASHOUT VALVE
 - LV = LINE VALVE

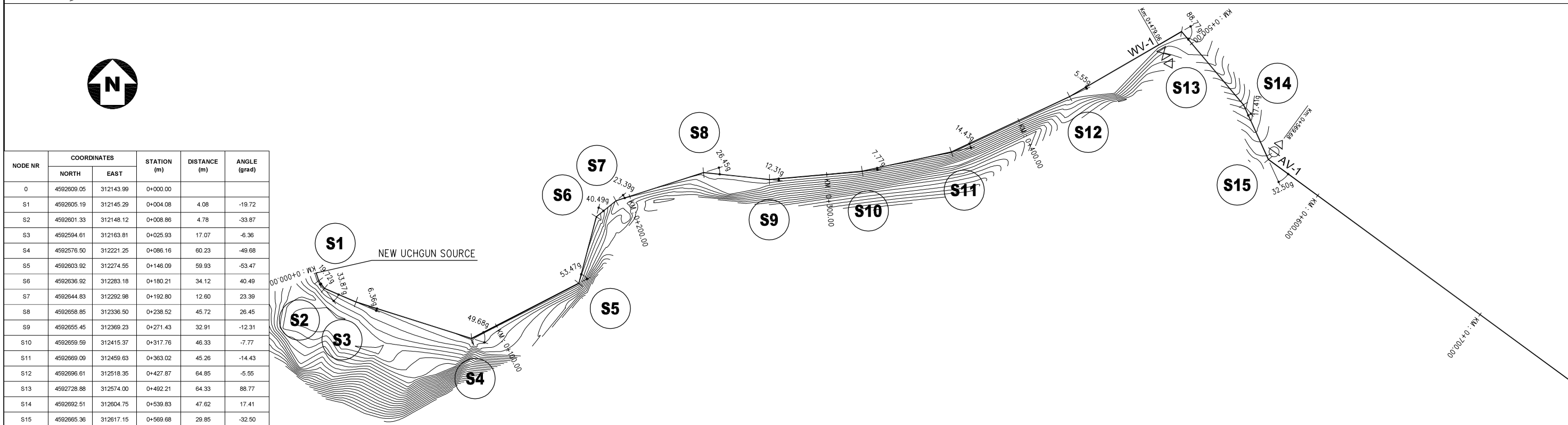
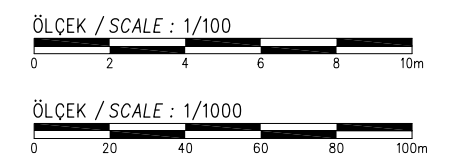
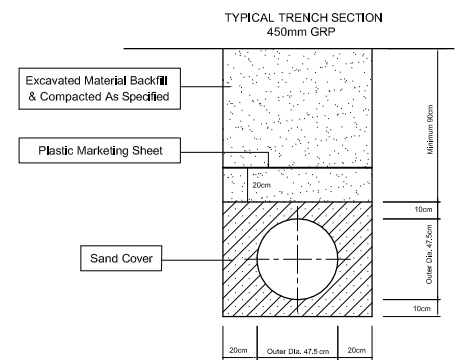


SPECIAL ASSISTANCE FOR PROJECT IMPLEMENTATION (SAPI) FOR THE PROVINCIAL CITIES WATER SUPPLY AND SEWERAGE PROJECT IN THE REPUBLIC OF AZERBAIJAN	AZERSU JOINT STOCK COMPANY, the Republic of Azerbaijan	Site : Khacmaz	Facility : Plan & Profile of TL from Existing Uchgun Source to Point "A"	Title : Between KM: 0+000.00 - 0+538.49	Scale of Drawing : 1/1000	Category - City SU-XAC	Facility Code - Number 09-02(01)
	Japan International Cooperation Agency (JICA), Japan				Original Size of Paper : A1	Date March 2010	Revision Number Rev.0



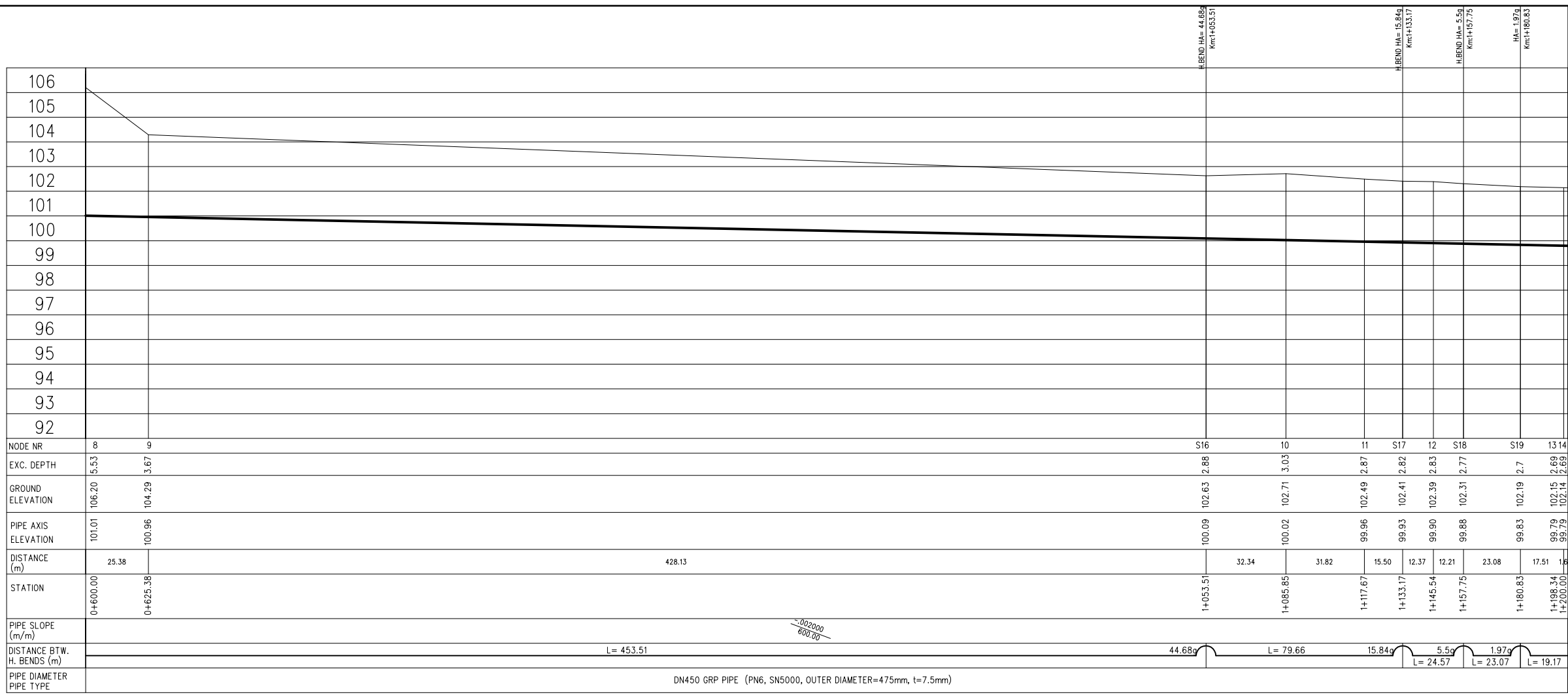
LEGEND

	AIR VALVE	V. BEND	= VERTICAL BEND
	H. BEND	= HORIZONTAL BEND	
	C. BEND	= COMBINED BEND	
	VA	= VERTICAL ANGLE (in grad)	
	HA	= HORIZONTAL ANGLE (in grad)	
	CA	= COMBINED ANGLE (in grad)	
	AV	= AIR VALVE	
	WV	= WASHOUT VALVE	
	LV	= LINE VALVE	

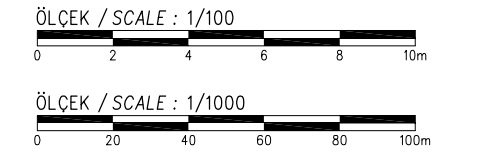
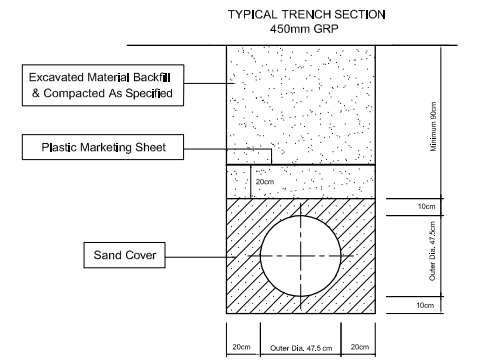


NODE NR	COORDINATES		STATION (m)	DISTANCE (m)	ANGLE (grad)
	NORTH	EAST			
0	4592609.05	312143.99	0+000.00		
S1	4592605.19	312145.29	0+004.08	4.08	-19.72
S2	4592601.33	312148.12	0+008.86	4.78	-33.87
S3	4592594.61	312163.81	0+025.93	17.07	-6.36
S4	4592576.50	312221.25	0+086.16	60.23	-49.68
S5	4592603.92	312274.55	0+146.09	59.93	-53.47
S6	4592636.92	312283.18	0+180.21	34.12	40.49
S7	4592644.83	312292.98	0+192.80	12.60	23.39
S8	4592658.85	312336.50	0+238.52	45.72	26.45
S9	4592655.45	312369.23	0+271.43	32.91	-12.31
S10	4592659.59	312415.37	0+317.76	46.33	-7.77
S11	4592669.09	312459.63	0+363.02	45.26	-14.43
S12	4592696.61	312518.35	0+427.87	64.85	-5.55
S13	4592728.88	312574.00	0+492.21	64.33	88.77
S14	4592692.51	312604.75	0+539.83	47.62	17.41
S15	4592665.36	312617.15	0+569.68	29.85	-32.50

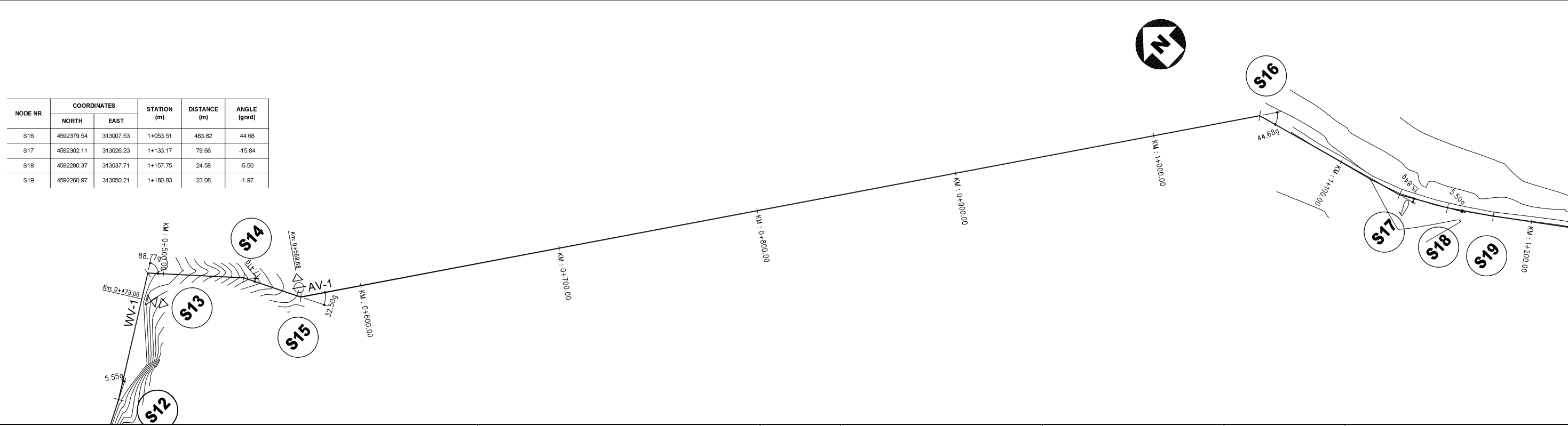
SPECIAL ASSISTANCE FOR PROJECT IMPLEMENTATION (SAPI) FOR THE PROVINCIAL CITIES WATER SUPPLY AND SEWERAGE PROJECT IN THE REPUBLIC OF AZERBAIJAN	AZERSU JOINT STOCK COMPANY, the Republic of Azerbaijan Japan International Cooperation Agency (JICA), Japan	Site : Khacmaz	Facility : Plan & Profile of TL from New Uchgun Source to Point "A"	Title : Between KM: 0+000.00 - 0+600.00	Scale of Drawing : 1/1000 Original Size of Paper : A1	Category - City SU-XAC Date March 2010	Facility Code - Number 09-03(01) Revision Number Rev.0
		SPECIAL ASSISTANCE FOR PROJECT IMPLEMENTATION (SAPI) FOR THE PROVINCIAL CITIES WATER SUPPLY AND SEWERAGE PROJECT IN THE REPUBLIC OF AZERBAIJAN					



- LEGEND**
- AIR VALVE
 - WASHOUT VALVE
 - LINE VALVE
 - V. BEND = VERTICAL BEND
 - H. BEND = HORIZONTAL BEND
 - C. BEND = COMBINED BEND
 - VA = VERTICAL ANGLE (in grad)
 - HA = HORIZONTAL ANGLE (in grad)
 - CA = COMBINED ANGLE (in grad)
 - AV = AIR VALVE
 - WV = WASHOUT VALVE
 - LV = LINE VALVE



1/100
1/1000



SPECIAL ASSISTANCE FOR PROJECT IMPLEMENTATION (SAPI) FOR THE PROVINCIAL CITIES WATER SUPPLY AND SEWERAGE PROJECT IN THE REPUBLIC OF AZERBAIJAN

AZERSU JOINT STOCK COMPANY, the Republic of Azerbaijan
Japan International Cooperation Agency (JICA), Japan

Site : Gusar

Facility : Plan & Profile of TL from New Uchgun Source to Point "A"

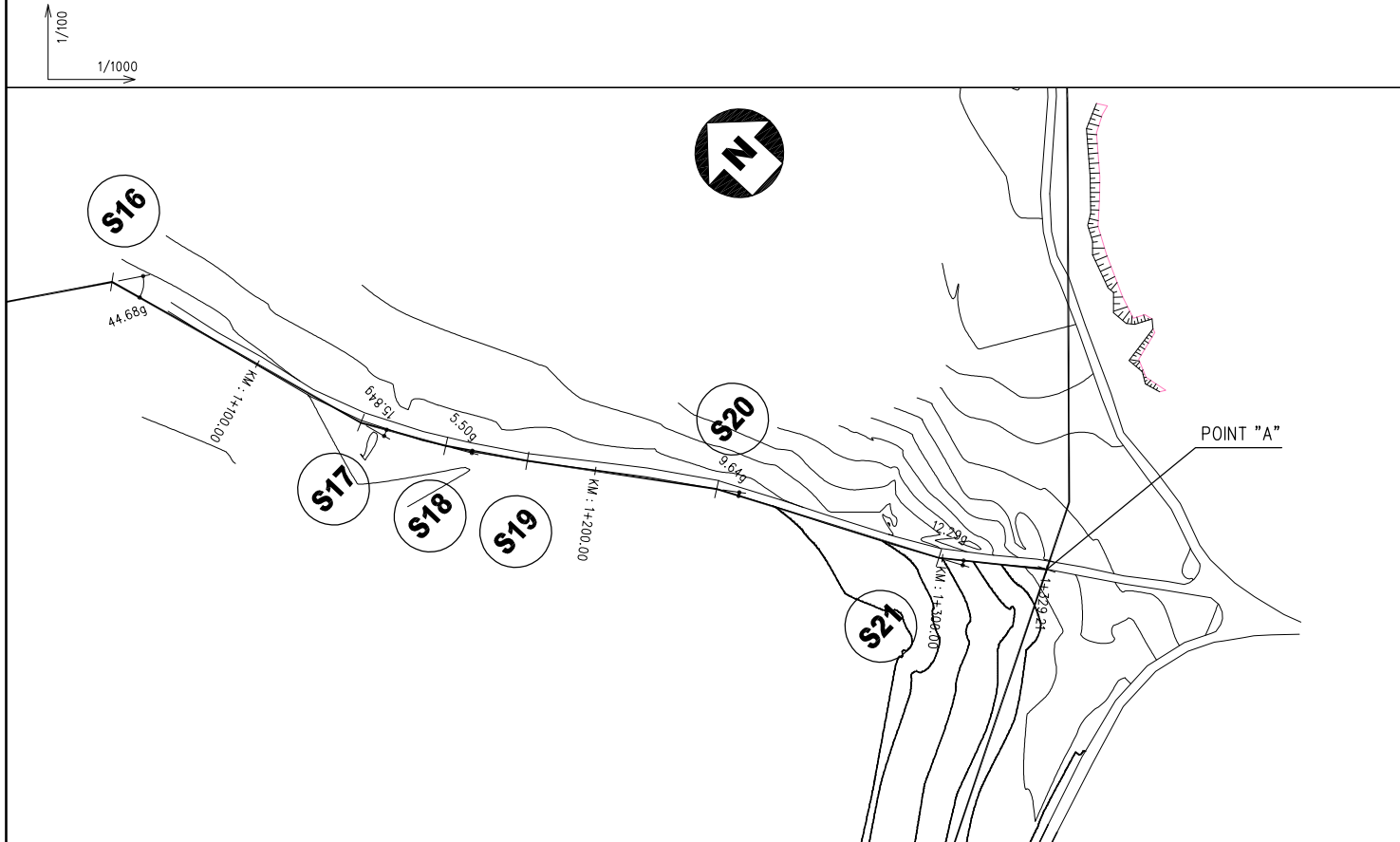
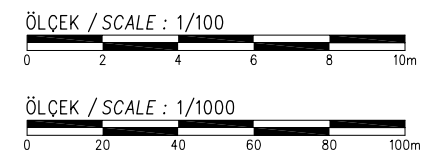
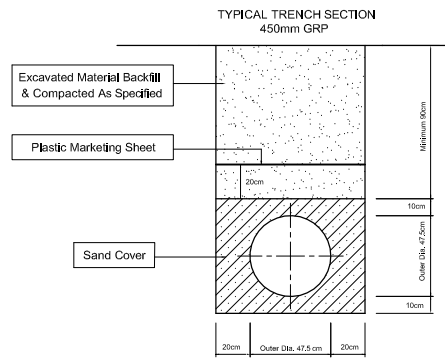
Title : Between KM: 0+600.00 - 1+200.00

Scale of Drawing : 1/1000
Original Size of Paper : A1

Category - City : SU-XAC
Facility Code - Number : 09-03(02)
Date : March 2010
Revision Number : Rev.0

	H.BEND HA= 9.64° Km:1+234.16		C.BEND CA= 12.65° Km:1+299.02		END OF LINE Km: 1+329.21				
102									
101									
100									
99									
98									
97									
96									
95									
94									
93									
92									
91									
90									
89									
88									
NODE NR	14	15	S20	16	17	18	S21	19	20
EXC. DEPTH	2.69	2.69	2.68	2.64	2.49	2.16	1.8	1.67	1.56
GROUND ELEVATION	102.14	102.11	102.06	101.99	101.81	101.44	101.05	99.84	99.15
PIPE AXIS ELEVATION	99.79	99.76	99.72	99.69	99.66	99.62	99.59	98.51	97.93
DISTANCE (m)	14.29	19.87	17.29	14.46	19.86	13.25	19.64	10.55	
STATION	1+200.00	1+214.29	1+234.16	1+251.45	1+265.91	1+285.77	1+299.02	1+318.66	1+329.21
PIPE SLOPE (m/m)			-0.00200 99.02				-0.04985 30.18		
DISTANCE BTW. H. BENDS (m)	L= 34.16	9.64g		L= 64.85	12.29g		21.39g	L= 30.18	
PIPE DIAMETER PIPE TYPE	DN450 GRP PIPE (PN6, SN5000, OUTER DIAMETER=475mm, t=7.5mm)								

- LEGEND**
- AIR VALVE
 - WASHOUT VALVE
 - LINE VALVE
 - V. BEND = VERTICAL BEND
 - H. BEND = HORIZONTAL BEND
 - C. BEND = COMBINED BEND
 - VA = VERTICAL ANGLE (in grad)
 - HA = HORIZONTAL ANGLE (in grad)
 - CA = COMBINED ANGLE (in grad)
 - AV = AIR VALVE
 - WV = WASHOUT VALVE
 - LV = LINE VALVE



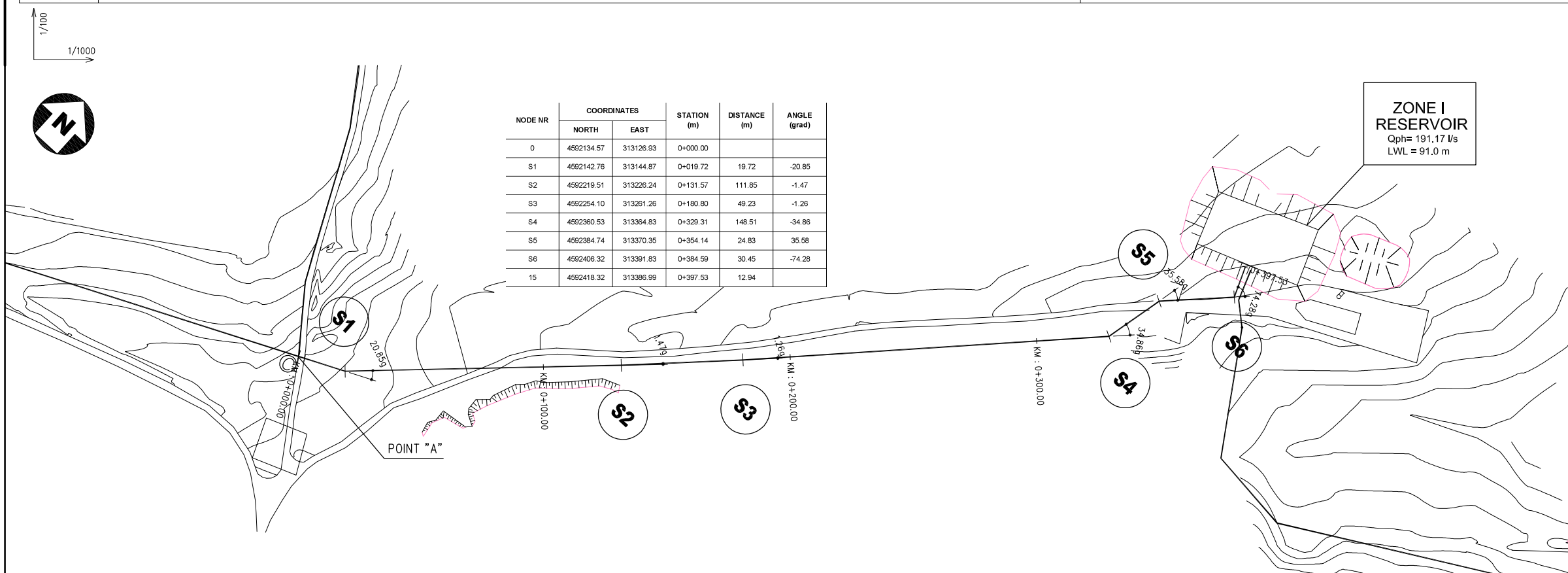
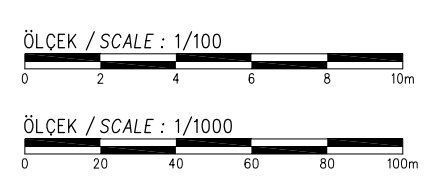
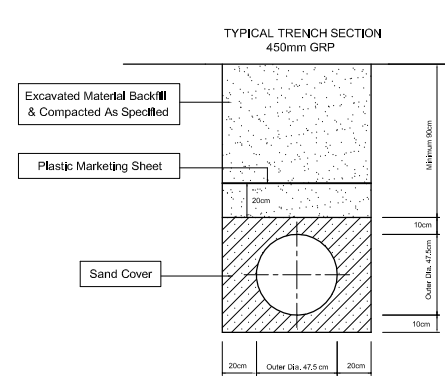
NODE NR	COORDINATES		STATION (m)	DISTANCE (m)	ANGLE (grad)
	NORTH	EAST			
S20	4592217.05	313080.47	1+234.16	53.33	9.64
S21	4592158.70	313108.78	1+299.02	64.85	-12.29
20	4592134.57	313126.93	1+329.21	30.20	

SPECIAL ASSISTANCE FOR PROJECT IMPLEMENTATION (SAPI) FOR THE PROVINCIAL CITIES WATER SUPPLY AND SEWERAGE PROJECT IN THE REPUBLIC OF AZERBAIJAN	AZERSU JOINT STOCK COMPANY, the Republic of Azerbaijan Japan International Cooperation Agency (JICA), Japan	Site : Gusar	Facility : Plan & Profile of TL from New Uchgun Source to Point "A"	Title : Between KM: 1+200.00 - 1+329.21	Scale of Drawing : 1/1000	Category - City SU-XAC	Facility Code - Number 09-03(03)
					Original Size of Paper : A1	Date March 2010	Revision Number Rev.0

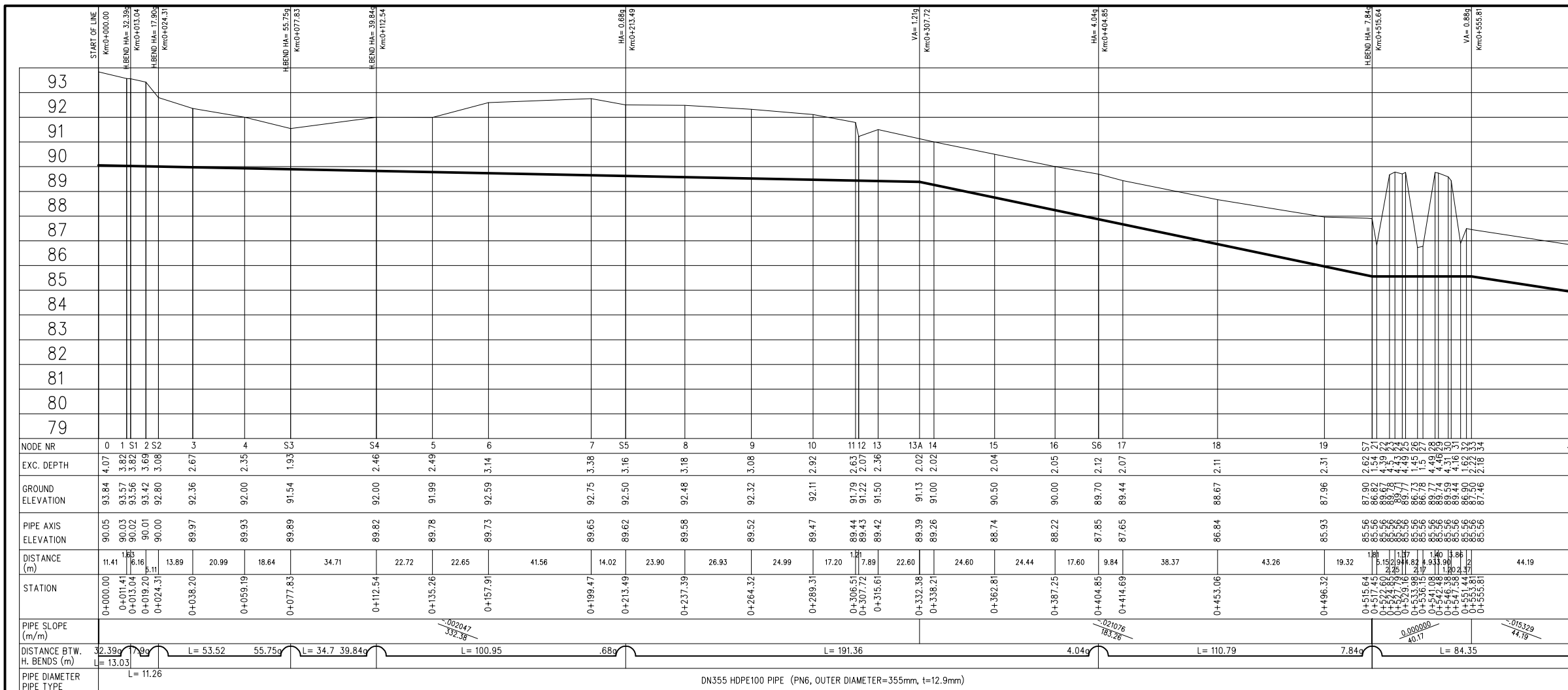
START OF LINE Km+000.00	H.BEND HA= 20.85 Km+019.72	VA= 0.412 Km+074.70	CA= 1.493 Km+131.57	HA= 1.266 Km+180.80	VA= 0.402 Km+227.52	C.BEND CA= 36.219 Km+329.31	H.BEND HA= 35.58 Km+354.14	H.BEND HA= 74.28 Km+384.59	END OF LINE Km+397.53																		
99																											
98																											
97																											
96																											
95																											
94																											
93																											
92																											
91																											
90																											
89																											
88																											
87																											
86																											
85																											
NODE NR	0	1	S1	2	3	4	5	S2	6	S3	7	8	9	10	11	12	S4	13	S5	14	S6	15					
EXC. DEPTH	2.59	2.49		1.81				1.59	1.85			1.59	1.69	1.93	1.83	1.8	1.59	2.48	3.10	3.44	4.13						
GROUND ELEVATION	99.16	99.02		97.36				96.10	95.97			94.87	94.50	94.40	94.00	93.75	93.45	93.76	93.64	93.56	93.84						
PIPE AXIS ELEVATION	96.91	96.87		95.89				94.85	94.45			93.53	93.25	93.05	92.81	92.29	92.20	91.62	90.88	90.46	90.05						
DISTANCE (m)	2.39	17.33		35.45				26.66	23.69			25.54	29.79	16.93	19.39	23.34	29.66	20.45	8.95	18.38	6.45	17.08	13.37	12.94			
STATION	0+000.00	0+002.39		0+019.72				0+074.70	0+082.72			0+104.91	0+131.57	0+155.26	0+180.80	0+210.59	0+227.52	0+246.91	0+270.25	0+299.91	0+320.36	0+329.31	0+347.69	0+354.14	0+371.22	0+384.59	0+397.53
PIPE SLOPE (m/m)				-0.018474 74.70				-0.01957 56.87				-0.016675 95.95		-0.010315 101.79				-0.031516 88.22									
DISTANCE BTW. H. BENDS (m)	L= 20.85			L= 111.85			L= 1.47	L= 49.22	L= 1.26			L= 148.5		L= 34.86		L= 24.83		L= 35.58		L= 74.28		L= 30.44		L= 12.94			
PIPE DIAMETER	DN450 GRP PIPE (PN6, SN5000, OUTER DIAMETER=475mm, t=7.5mm)																										
PIPE TYPE																											

LEGEND

	AIR VALVE	V. BEND	= VERTICAL BEND
	WASHOUT VALVE	H. BEND	= HORIZONTAL BEND
	LINE VALVE	C. BEND	= COMBINED BEND
		VA	= VERTICAL ANGLE (in grad)
		HA	= HORIZONTAL ANGLE (in grad)
		CA	= COMBINED ANGLE (in grad)
		AV	= AIR VALVE
		WV	= WASHOUT VALVE
		LV	= LINE VALVE

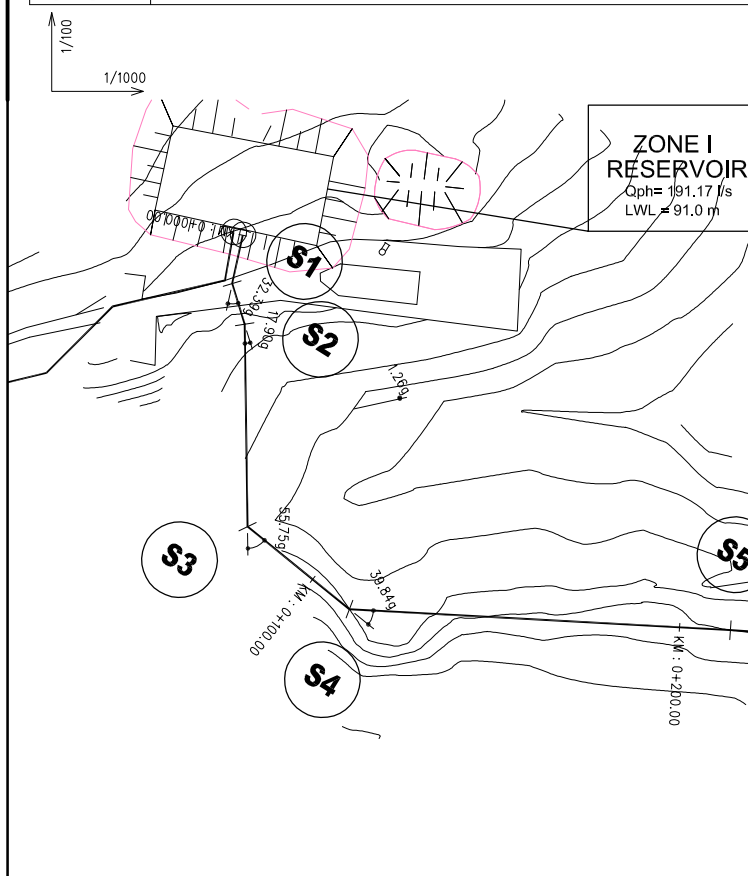
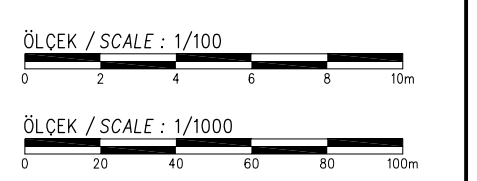
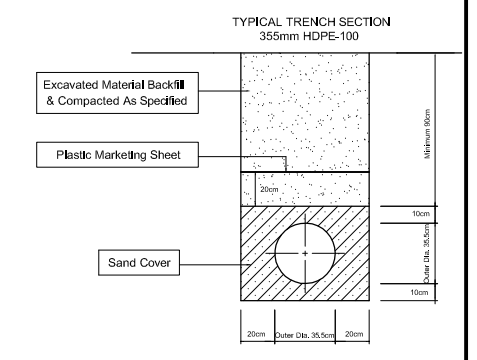


SPECIAL ASSISTANCE FOR PROJECT IMPLEMENTATION (SAPI) FOR THE PROVINCIAL CITIES WATER SUPPLY AND SEWERAGE PROJECT IN THE REPUBLIC OF AZERBAIJAN	AZERSU JOINT STOCK COMPANY, the Republic of Azerbaijan	Site : Khacmaz	Facility : Plan & Profile of TL from Point "A" to Zone I Service Reservoir	Title : Between KM: 0+000.00 - 0+397.53	Scale of Drawing : 1/1000	Category - City SU-XAC	Facility Code - Number 09-04(01)
	Japan International Cooperation Agency (JICA), Japan				Original Size of Paper : A1	Date March 2010	Revision Number Rev.0



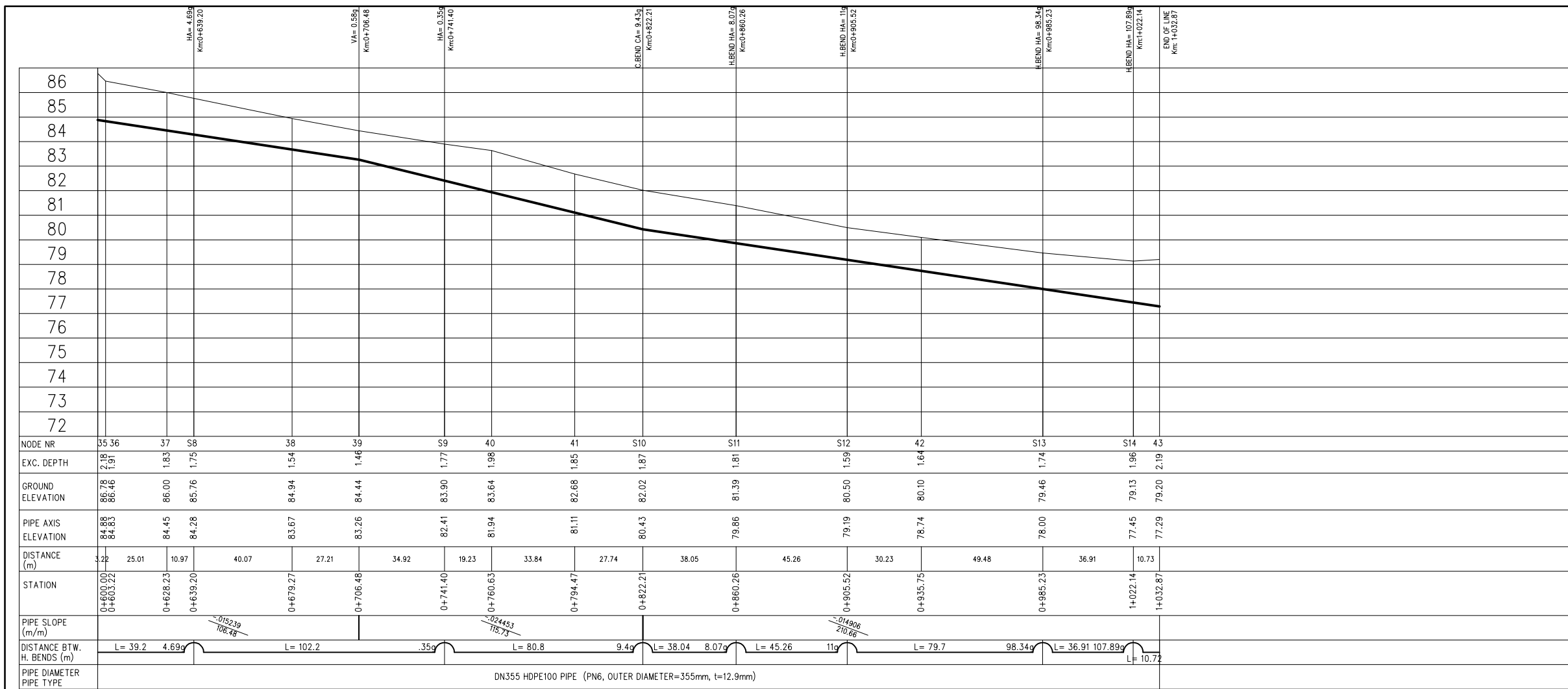
LEGEND

	AIR VALVE		V. BEND = VERTICAL BEND
	WASHOUT VALVE		H. BEND = HORIZONTAL BEND
	LINE VALVE		C. BEND = COMBINED BEND
			VA = VERTICAL ANGLE (in grad)
			HA = HORIZONTAL ANGLE (in grad)
			CA = COMBINED ANGLE (in grad)
			AV = AIR VALVE
			WV = WASHOUT VALVE
			LV = LINE VALVE

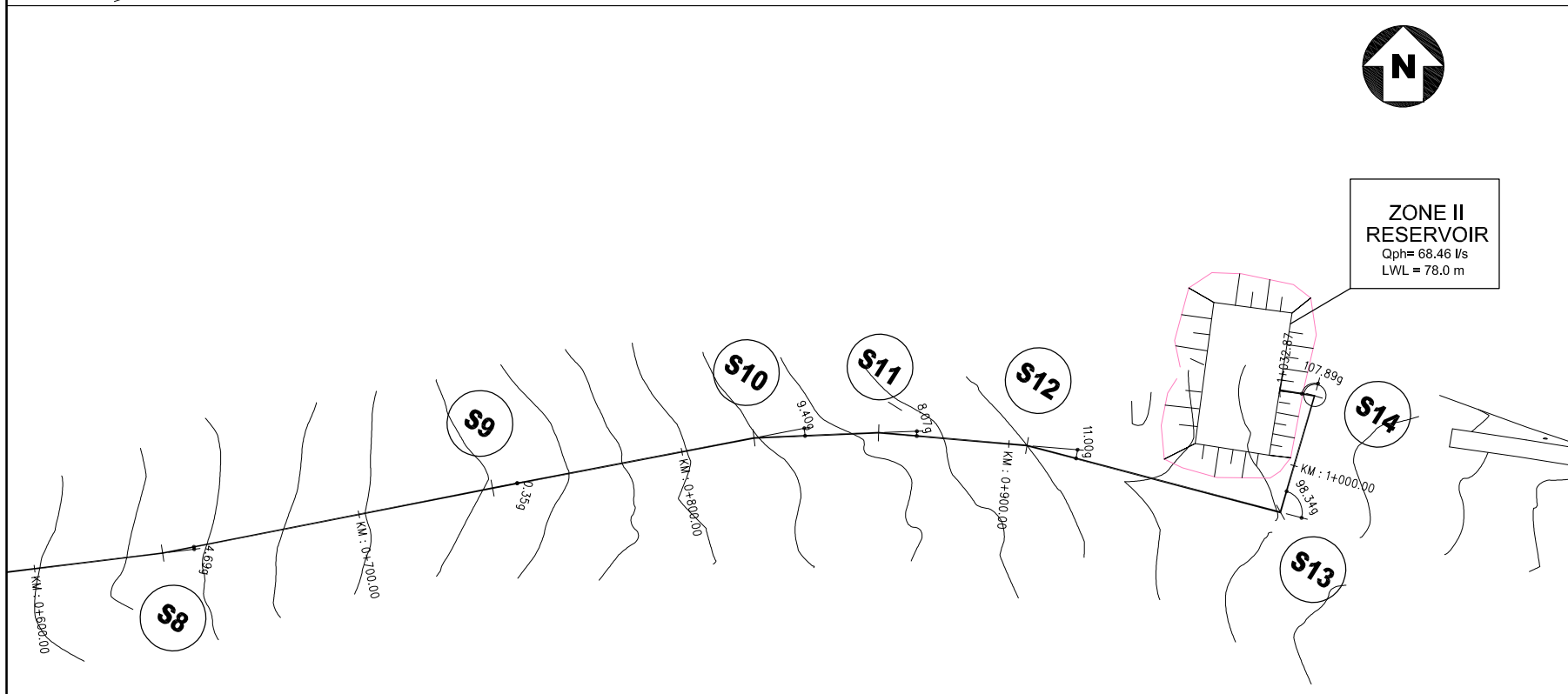
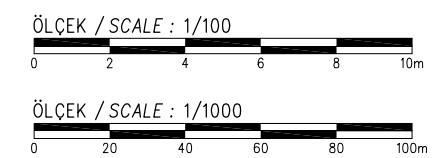
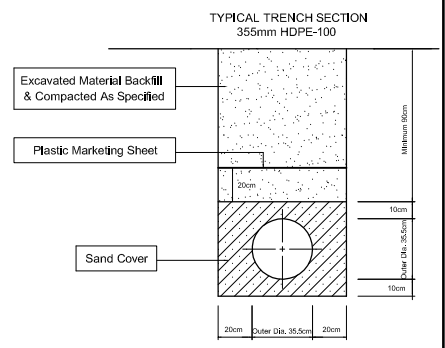


SOME NOKTASI	KOORDİNAT		KİLOMETRE (m)	ARA MESAFE (m)	AÇI (grad)	REEL AÇI (grad)
	KUZEY	DOĞU				
0	4592418.94	313389.47	0+000.00			
S1	4592406.68	313393.90	0+013.04	13.04	367.61	-32.39
S2	4592399.29	313402.41	0+024.31	11.27	17.90	17.90
S3	4592354.36	313431.50	0+077.83	53.52	344.25	-55.75
S4	4592350.20	313465.96	0+112.54	34.71	360.16	-39.84
S5	4592399.07	313554.29	0+213.49	100.95	0.68	0.68
S6	4592489.94	313722.70	0+404.85	191.35	395.96	-4.04
S7	4592548.62	313816.67	0+515.64	110.79	392.16	-7.84

SPECIAL ASSISTANCE FOR PROJECT IMPLEMENTATION (SAPI) FOR THE PROVINCIAL CITIES WATER SUPPLY AND SEWERAGE PROJECT IN THE REPUBLIC OF AZERBAIJAN	AZERSU JOINT STOCK COMPANY, the Republic of Azerbaijan		Site : Khacmaz	Facility : Plan & Profile of TL From Zone I Service Reservoir to Zone II Service Reservoir	Title : Between KM: 0+000.00 - 0+600.00	Scale of Drawing : 1/1000	Category - City SU-XAC	Facility Code - Number 09-05(01)
	Japan International Cooperation Agency (JICA), Japan					Original Size of Paper : A1	Date March 2010	Revision Number Rev.0



- LEGEND**
- AIR VALVE
 - WASHOUT VALVE
 - LINE VALVE
 - V. BEND = VERTICAL BEND
 - H. BEND = HORIZONTAL BEND
 - C. BEND = COMBINED BEND
 - VA = VERTICAL ANGLE (in grad)
 - HA = HORIZONTAL ANGLE (in grad)
 - CA = COMBINED ANGLE (in grad)
 - AV = AIR VALVE
 - WV = WASHOUT VALVE
 - LV = LINE VALVE



SOME NOKTASI	KOORDİNAT		KİLOMETRE (m)	ARA MESAFE (m)	AÇI (grad)	REEL AÇI (grad)
	KUZEY	DOĞU				
S8	4592626.46	313912.63	0+639.20	123.56	395.31	-4.69
S9	4592696.50	313987.05	0+741.40	102.20	0.35	0.35
S10	4592751.66	314046.30	0+822.34	80.94	9.40	9.40
S11	4592773.11	314077.53	0+860.24	37.90	8.07	8.07
S12	4592793.83	314117.80	0+905.51	45.28	11.00	11.00
S13	4592817.56	314193.89	0+985.22	79.71	301.66	-98.34
S14	4592853.07	314183.82	1+022.13	36.90	292.11	-107.89
43	4592848.88	314173.93	1+032.87	10.74		

SPECIAL ASSISTANCE FOR PROJECT IMPLEMENTATION (SAPI) FOR THE PROVINCIAL CITIES WATER SUPPLY AND SEWERAGE PROJECT IN THE REPUBLIC OF AZERBAIJAN	AZERSU JOINT STOCK COMPANY, the Republic of Azerbaijan Japan International Cooperation Agency (JICA), Japan	Site : Khacmaz	Facility : Plan & Profile of TL From Zone I Service Reservoir to Zone II Service Reservoir	Title : Between KM: 0+600.00 - 1+032.87	Scale of Drawing : 1/1000 Original Size of Paper : A1	Category - City SU-XAC Date March 2010	Facility Code - Number 09-05(02) Revision Number Rev.0
--	--	-------------------	---	---	--	---	---