

ƏLAVƏ 5

ÖTÜRÜCÜ BORU XƏTTİNİN CİZGİSİ (PLAN)

TRANSMISSION PIPELINE DRAWING

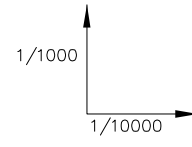
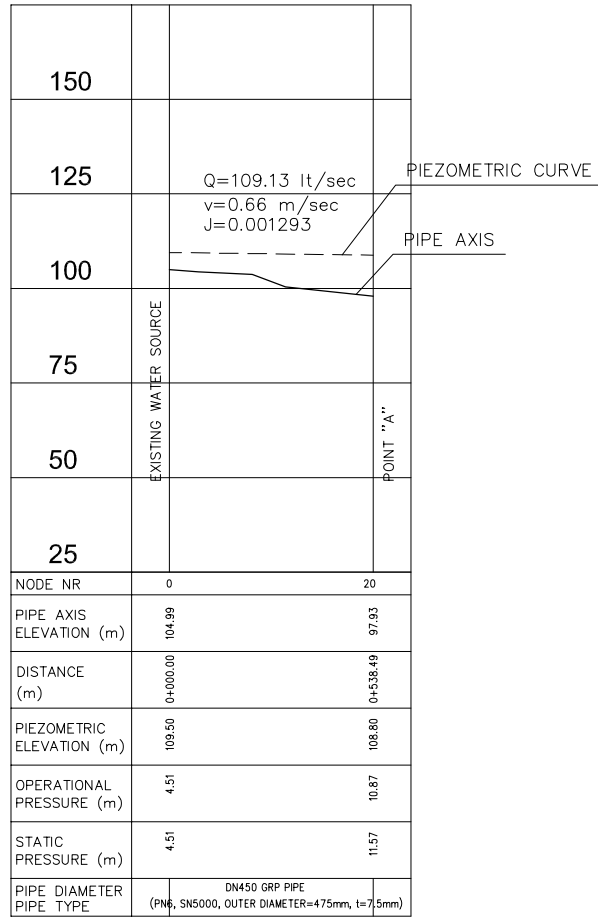
KHACHMAZ XAÇMAZ	Code
Hydraulic Profile of Khachmaz Transmission Lines (1/2)	SU-XAC 09-01(01)
Hydraulic Profile of Khachmaz Transmission Lines (2/2)	SU-XAC 09-01(02)
Plan & Profile of Existing Uchgun Source to Point "A"	SU-XAC 09-02(01)
Plan & Profile of New Uchgun Source to Point "A"	SU-XAC 09-03(01)
Plan & Profile of New Uchgun Source to Point "A"	SU-XAC 09-03(02)
Plan & Profile from Point "A" to Zone I Service Reservoir	SU-XAC 09-03(03)
Plan & Profile from Zone I Service Reservoir to Zone II Reservoir (1/3)	SU-XAC 09-04(01)
Plan & Profile from Zone I Service Reservoir to Zone II Reservoir (2/3)	SU-XAC 09-05(01)
Plan & Profile from Zone I Service Reservoir to Zone II Reservoir (3/3)	SU-XAC 09-05(02)
GUSAR QUSAR	Code
Hydraulic Profile of Gusar Transmission Lines (1/3)	SU-QUS 09-01(01)
Hydraulic Profile of Gusar Transmission Lines (2/3)	SU-QUS 09-01(02)
Hydraulic Profile of Gusar Transmission Lines (2/3)	SU-QUS 09-01(03)
Plan & Profile from Gusar River Left Bank Intake to Zone I Service Reservoir (1/25)	SU-QUS 09-02(01)
Plan & Profile from Gusar River Left Bank Intake to Zone I Service Reservoir (2/25)	SU-QUS 09-02(02)
Plan & Profile from Gusar River Left Bank Intake to Zone I Service Reservoir (3/25)	SU-QUS 09-02(03)
Plan & Profile from Gusar River Left Bank Intake to Zone I Service Reservoir (4/25)	SU-QUS 09-02(04)
Plan & Profile from Gusar River Left Bank Intake to Zone I Service Reservoir (5/25)	SU-QUS 09-02(05)
Plan & Profile from Gusar River Left Bank Intake to Zone I Service Reservoir (6/25)	SU-QUS 09-02(06)
Plan & Profile from Gusar River Left Bank Intake to Zone I Service Reservoir (7/25)	SU-QUS 09-02(07)
Plan & Profile from Gusar River Left Bank Intake to Zone I Service Reservoir (8/25)	SU-QUS 09-02(08)
Plan & Profile from Gusar River Left Bank Intake to Zone I Service Reservoir (9/25)	SU-QUS 09-02(09)
Plan & Profile from Gusar River Left Bank Intake to Zone I Service Reservoir (10/25)	SU-QUS 09-02(10)
Plan & Profile from Gusar River Left Bank Intake to Zone I Service Reservoir (11/25)	SU-QUS 09-02(11)
Plan & Profile from Gusar River Left Bank Intake to Zone I Service Reservoir (12/25)	SU-QUS 09-02(12)
Plan & Profile from Gusar River Left Bank Intake to Zone I Service Reservoir (13/25)	SU-QUS 09-02(13)
Plan & Profile from Gusar River Left Bank Intake to Zone I Service Reservoir (14/25)	SU-QUS 09-02(14)
Plan & Profile from Gusar River Left Bank Intake to Zone I Service Reservoir (15/25)	SU-QUS 09-02(15)
Plan & Profile from Gusar River Left Bank Intake to Zone I Service Reservoir (16/25)	SU-QUS 09-02(16)
Plan & Profile from Gusar River Left Bank Intake to Zone I Service Reservoir (17/25)	SU-QUS 09-02(17)
Plan & Profile from Gusar River Left Bank Intake to Zone I Service Reservoir (18/25)	SU-QUS 09-02(18)
Plan & Profile from Gusar River Left Bank Intake to Zone I Service Reservoir (19/25)	SU-QUS 09-02(19)
Plan & Profile from Gusar River Left Bank Intake to Zone I Service Reservoir (20/25)	SU-QUS 09-02(20)
Plan & Profile from Gusar River Left Bank Intake to Zone I Service Reservoir (21/25)	SU-QUS 09-02(21)
Plan & Profile from Gusar River Left Bank Intake to Zone I Service Reservoir (22/25)	SU-QUS 09-02(22)
Plan & Profile from Gusar River Left Bank Intake to Zone I Service Reservoir (23/25)	SU-QUS 09-02(23)
Plan & Profile from Gusar River Left Bank Intake to Zone I Service Reservoir (24/25)	SU-QUS 09-02(24)
Plan & Profile from Gusar River Left Bank Intake to Zone I Service Reservoir (25/25)	SU-QUS 09-02(25)
Plan & Profile from Zone I Service Reservoir to Zone II Reservoir	SU-QUS 09-03(01)

GUSAR QUSAR	Code
Plan & Profile from Zone I Service Reservoir to Zone III Reservoir (1/4)	SU-QUS 09-04(01)
Plan & Profile from Zone I Service Reservoir to Zone III Reservoir (2/4)	SU-QUS 09-04(02)
Plan & Profile from Zone I Service Reservoir to Zone III Reservoir (3/4)	SU-QUS 09-04(03)
Plan & Profile from Zone I Service Reservoir to Zone III Reservoir (4/4)	SU-QUS 09-04(04)
Plan & Profile from Gusar River Right Bank Intake to Zone IV Reservoir (1/8)	SU-QUS 09-05(01)
Plan & Profile from Gusar River Right Bank Intake to Zone IV Reservoir (2/8)	SU-QUS 09-05(02)
Plan & Profile from Gusar River Right Bank Intake to Zone IV Reservoir (3/8)	SU-QUS 09-05(03)
Plan & Profile from Gusar River Right Bank Intake to Zone IV Reservoir (4/8)	SU-QUS 09-05(04)
Plan & Profile from Gusar River Right Bank Intake to Zone IV Reservoir (5/8)	SU-QUS 09-05(05)
Plan & Profile from Gusar River Right Bank Intake to Zone IV Reservoir (6/8)	SU-QUS 09-05(06)
Plan & Profile from Gusar River Right Bank Intake to Zone IV Reservoir (7/8)	SU-QUS 09-05(07)
Plan & Profile from Gusar River Right Bank Intake to Zone IV Reservoir (8/8)	SU-QUS 09-05(08)
GENERAL	Code
Line Valve Chamber on HDPE Pipeline	SU-GEN 09-06(01)
Line Valve Chamber on GRP Pipeline	SU-GEN 09-06(02)
Air Valve Chamber on HDPE Pipeline	SU-GEN 09-06(03)
Air Valve Chamber on GRP Pipeline	SU-GEN 09-06(04)
Washout Valve Chamber on HDPE Pipeline	SU-GEN 09-06(05)
Washout Valve Chamber on GRP Pipeline	SU-GEN 09-06(06)
Junction Chamber on Point "A" on Khachmaz Transmission Pipeline	SU-GEN 09-06(07)

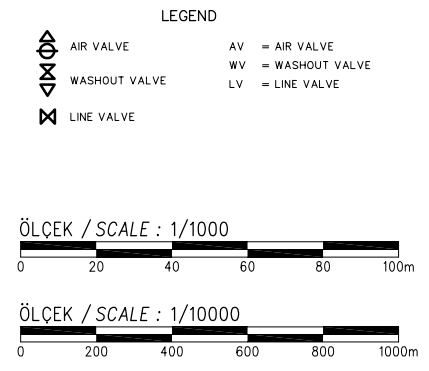
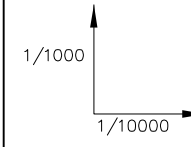
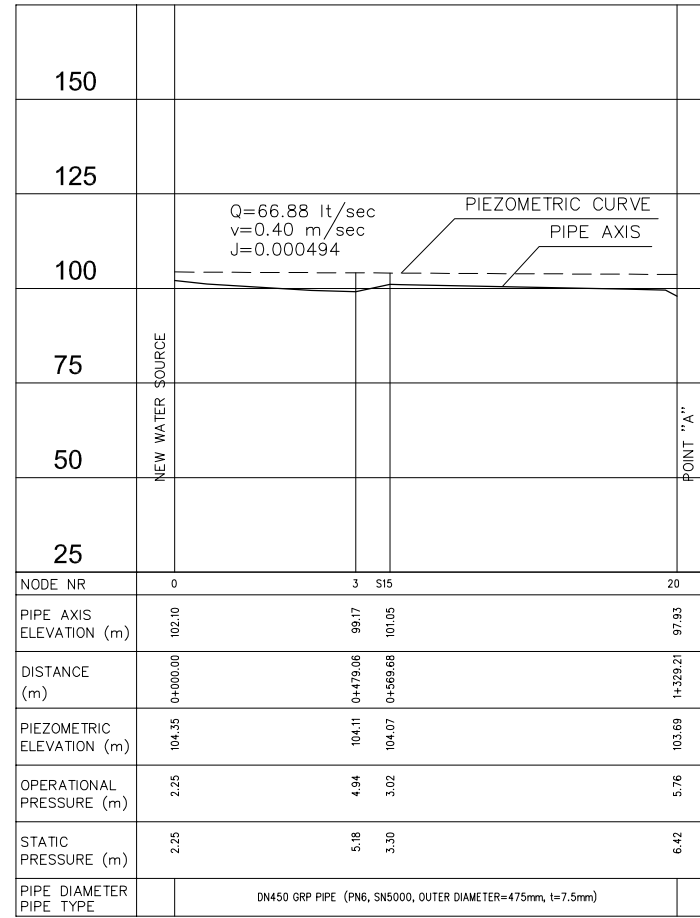
KHACHMAZ

XAÇMAZ

Khacmaz Transmission Line From Existing Uchgun Water Source to Junction Point "A"



Khacmaz Transmission Line From New Uchgun Water Source to Junction Point "A"



SPECIAL ASSISTANCE FOR PROJECT IMPLEMENTATION (SAPI) FOR THE PROVINCIAL CITIES WATER SUPPLY AND SEWERAGE PROJECT IN THE REPUBLIC OF AZERBAIJAN

AZERSU JOINT STOCK COMPANY, the Republic of Azerbaijan
Japan International Cooperation Agency (JICA), Japan

Site : Khacmaz

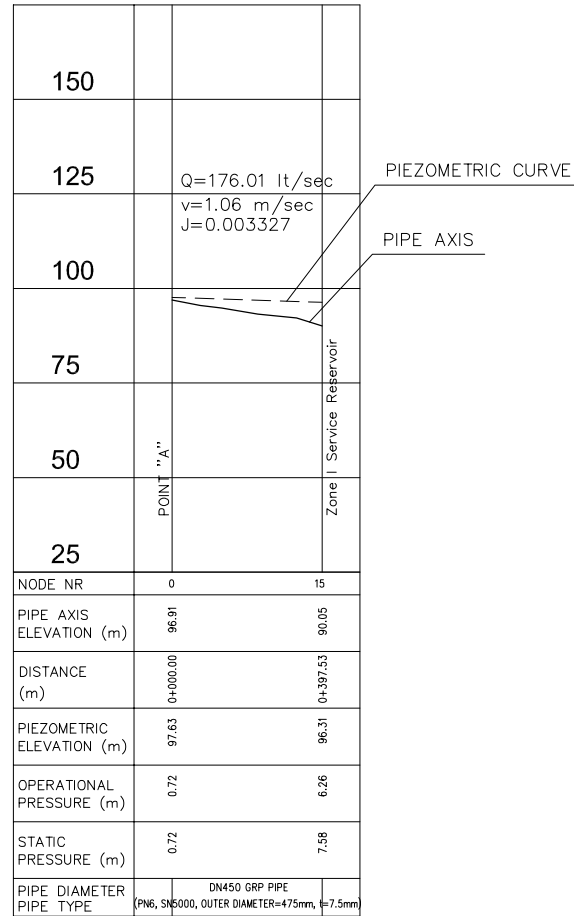
Facility : Khacmaz Transmission Lines

Title : Plan & Hydraulic Profile (1/2)

Scale of Drawing : 1/10000
Original Size of Paper : A1

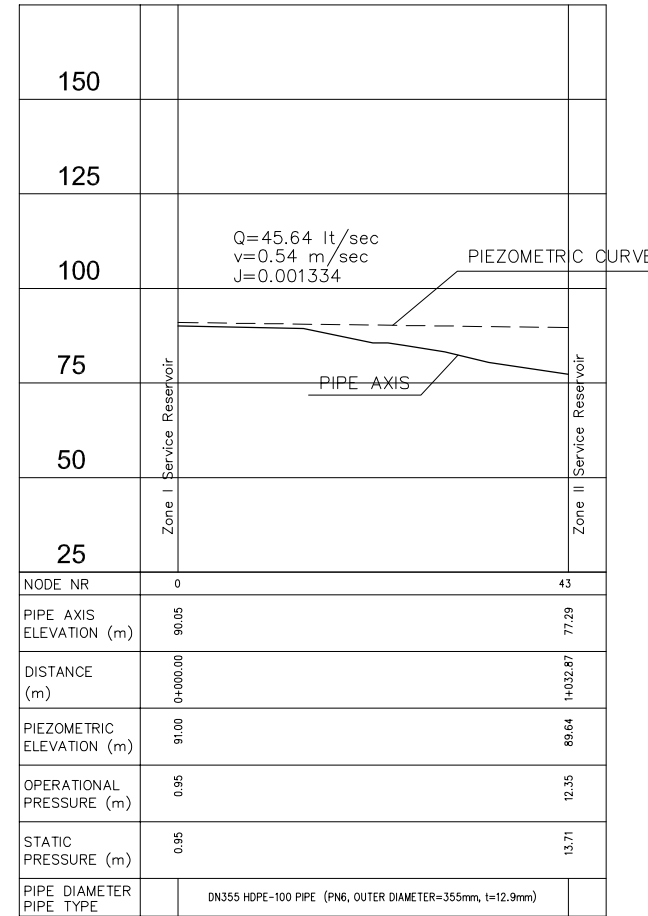
Category - City : SU-XAC
Facility Code - Number : 09-01(01)
Date : March 2010
Revision Number : Rev.0

Khacmaz Transmission Line From Junction Point "A" to Zone I Service Reservoir



1/1000
1/10000

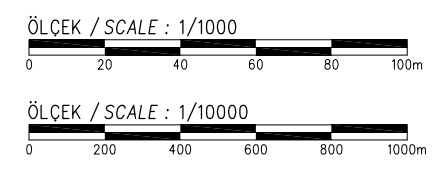
Khacmaz Transmission Line From Zone I Service Reservoir to Zone II Service Reservoir



1/1000
1/10000



- LEGEND
- AIR VALVE
 - WASHOUT VALVE
 - LINE VALVE
 - AV = AIR VALVE
 - WV = WASHOUT VALVE
 - LV = LINE VALVE



SPECIAL ASSISTANCE FOR PROJECT IMPLEMENTATION (SAPI) FOR THE PROVINCIAL CITIES WATER SUPPLY AND SEWERAGE PROJECT IN THE REPUBLIC OF AZERBAIJAN

AZERSU JOINT STOCK COMPANY, the Republic of Azerbaijan
Japan International Cooperation Agency (JICA), Japan

Site : Khacmaz

Facility : Khacmaz Transmission Lines

Title : Plan & Hydraulic Profile (2/2)

Scale of Drawing : 1/10000
Original Size of Paper : A1

Category - City : SU-XAC
Facility Code - Number : 09-01(02)
Date : March 2010
Revision Number : Rev.0