

SPECIAL ASSISTANCE FOR PROJECT IMPLEMENTATION (SAPI) FOR
THE PROVINCIAL CITIES WATER SUPPLY AND SEWERAGE PROJECT
IN THE REPUBLIC OF AZERBAIJAN

AZERSU JOINT STOCK COMPANY,
the Republic of Azerbaijan
Japan International Cooperation Agency
(JICA), Japan

Site :
Gusar

Facility :
Plan & Profile of TL From
Gusar River Left Bank
Water Source to Zone I Serv. Res.

Title :
Between
KM: 9+600.00 - 10+200.00

Scale of
Drawing :
1/1000

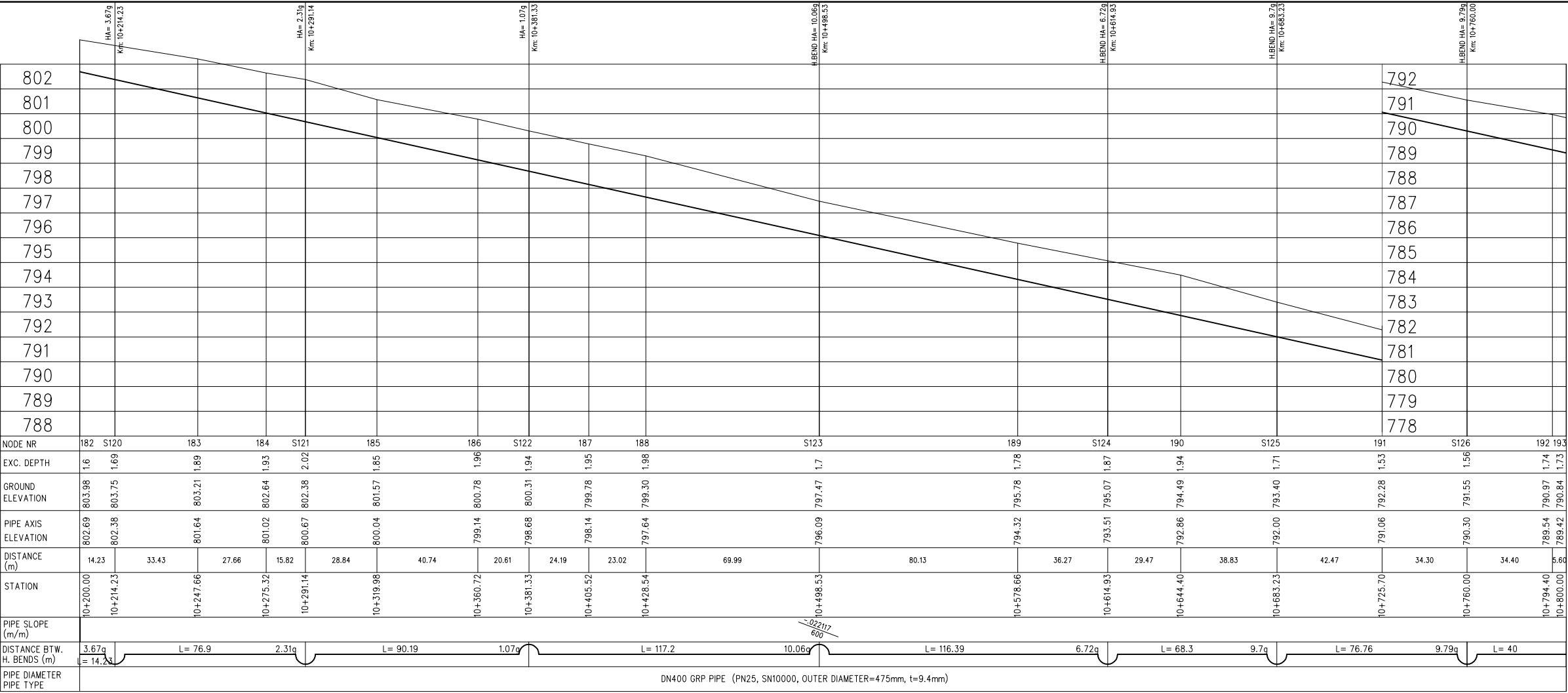
Original Size of
Paper :
A1

Category - City
SU-GUS-

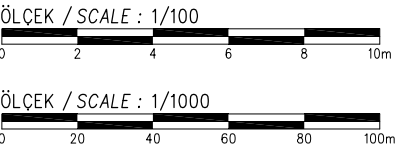
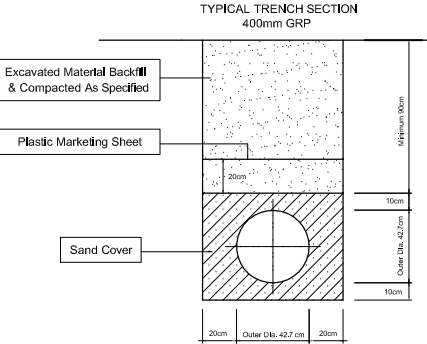
Facility Code -
Number
09-02(17)

Date
March 2010

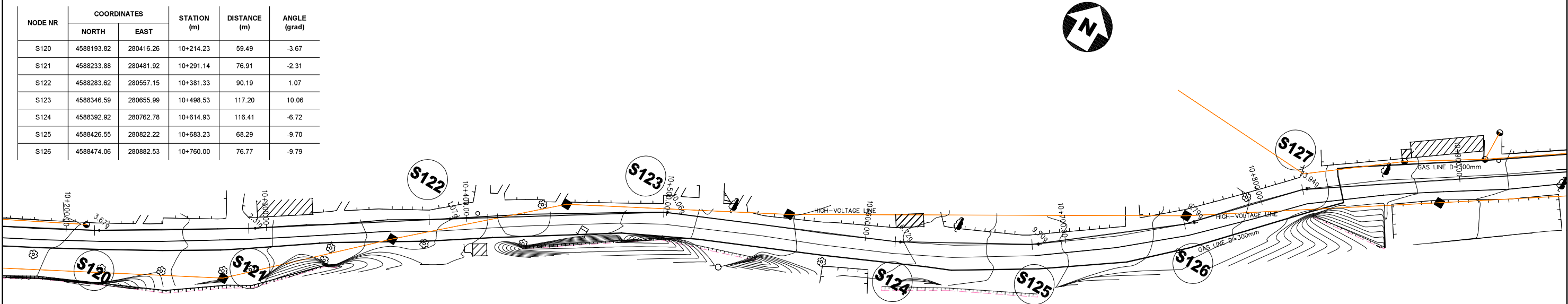
Revision Number
Rev.0



- LEGEND
- V. BEND = VERTICAL BEND
 - H. BEND = HORIZONTAL BEND
 - C. BEND = COMBINED BEND
 - VA = VERTICAL ANGLE (in grad)
 - HA = HORIZONTAL ANGLE (in grad)
 - CA = COMBINED ANGLE (in grad)
 - AV = AIR VALVE
 - WV = WASHOUT VALVE
 - LV = LINE VALVE



NODE NR	COORDINATES		STATION (m)	DISTANCE (m)	ANGLE (grad)
	NORTH	EAST			
S120	4588193.82	280416.26	10+214.23	59.49	-3.67
S121	4588233.88	280481.92	10+291.14	76.91	-2.31
S122	4588283.62	280557.15	10+381.33	90.19	1.07
S123	4588346.59	280655.99	10+498.53	117.20	10.06
S124	4588392.92	280762.78	10+614.93	116.41	-6.72
S125	4588426.55	280822.22	10+683.23	68.29	-9.70
S126	4588474.06	280882.53	10+760.00	76.77	-9.79



SPECIAL ASSISTANCE FOR PROJECT IMPLEMENTATION (SAPI) FOR
THE PROVINCIAL CITIES WATER SUPPLY AND SEWERAGE PROJECT
IN THE REPUBLIC OF AZERBAIJAN

AZERSU JOINT STOCK COMPANY,
the Republic of Azerbaijan
Japan International Cooperation Agency
(JICA), Japan

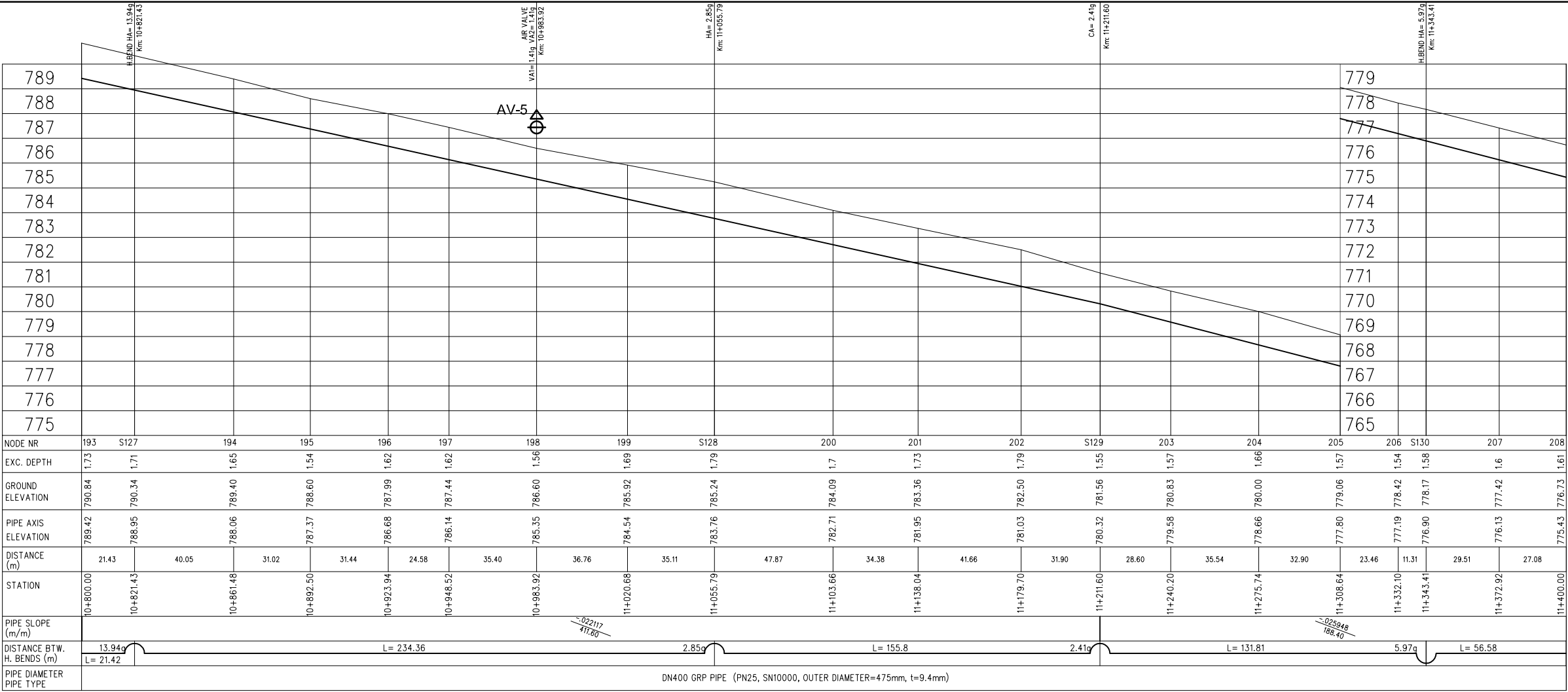
Site :
Gusar

Facility :
Plan & Profile of TL From
Gusar River Left Bank
Water Source to Zone I Serv. Res.

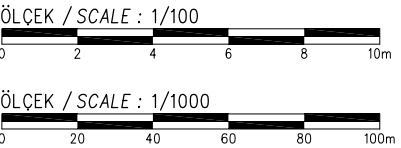
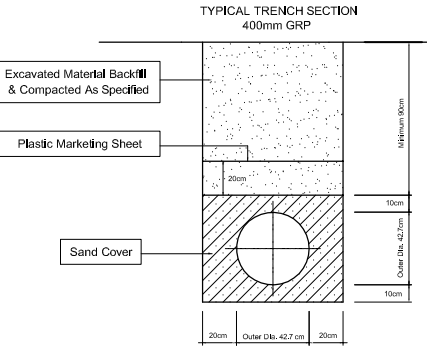
Title :
Between
KM: 10+200.00 - 10+800.00

Scale of
Drawing :
1/1000
Original Size of
Paper :
A1

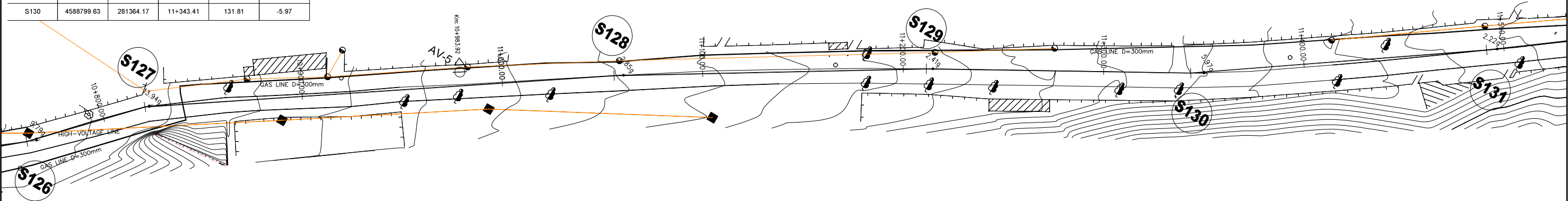
Category - City
SU-GUS-
Date
March 2010
Facility Code -
Number
09-02(18)
Revision Number
Rev.0



- LEGEND
- AIR VALVE
 - WASHOUT VALVE
 - LINE VALVE
 - V. BEND = VERTICAL BEND
 - H. BEND = HORIZONTAL BEND
 - C. BEND = COMBINED BEND
 - VA = VERTICAL ANGLE (in grad)
 - HA = HORIZONTAL ANGLE (in grad)
 - CA = COMBINED ANGLE (in grad)
 - AV = AIR VALVE
 - WV = WASHOUT VALVE
 - LV = LINE VALVE



NODE NR	COORDINATES		STATION (m)	DISTANCE (m)	ANGLE (grad)
	NORTH	EAST			
S127	4588519.02	280924.39	10+821.43	61.43	13.94
S128	4588651.77	281117.53	11+055.79	234.37	2.85
S129	4588734.19	281249.75	11+211.60	155.81	2.41
S130	4588799.63	281364.17	11+343.41	131.81	-5.97



SPECIAL ASSISTANCE FOR PROJECT IMPLEMENTATION (SAPI) FOR
THE PROVINCIAL CITIES WATER SUPPLY AND SEWERAGE PROJECT
IN THE REPUBLIC OF AZERBAIJAN

AZERSU JOINT STOCK COMPANY,
the Republic of Azerbaijan
Japan International Cooperation Agency
(JICA), Japan

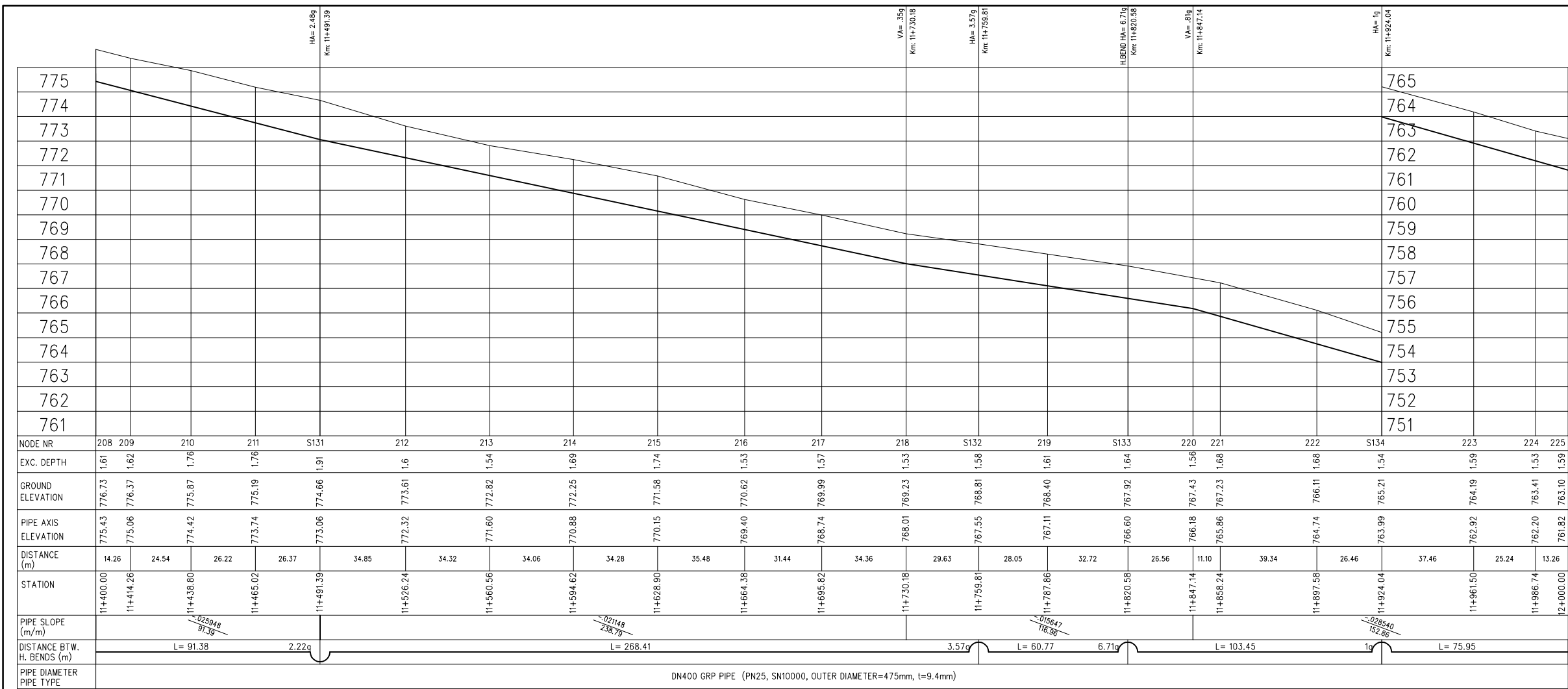
Site :
Gusar

Facility :
Plan & Profile of TL From
Gusar River Left Bank
Water Source to Zone I Serv. Res.

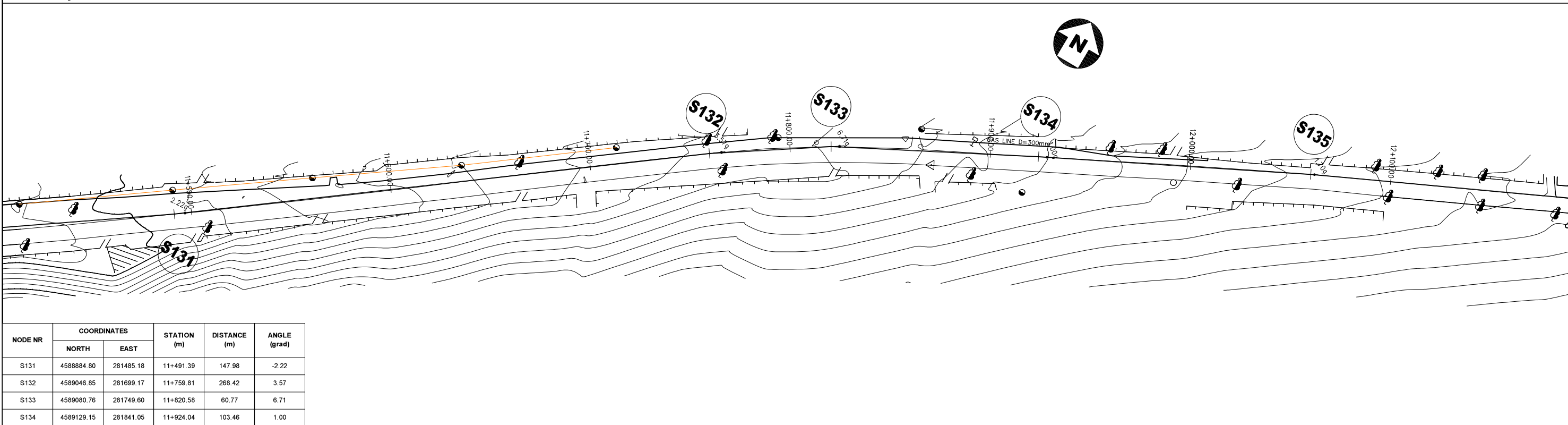
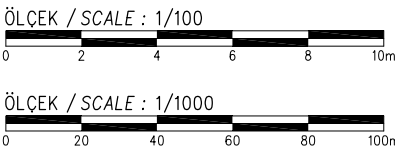
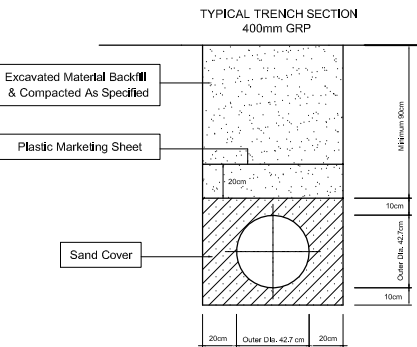
Title :
Between
KM: 10+800.00 - 11+400.00

Scale of
Drawing :
1/1000
Original Size of
Paper :
A1

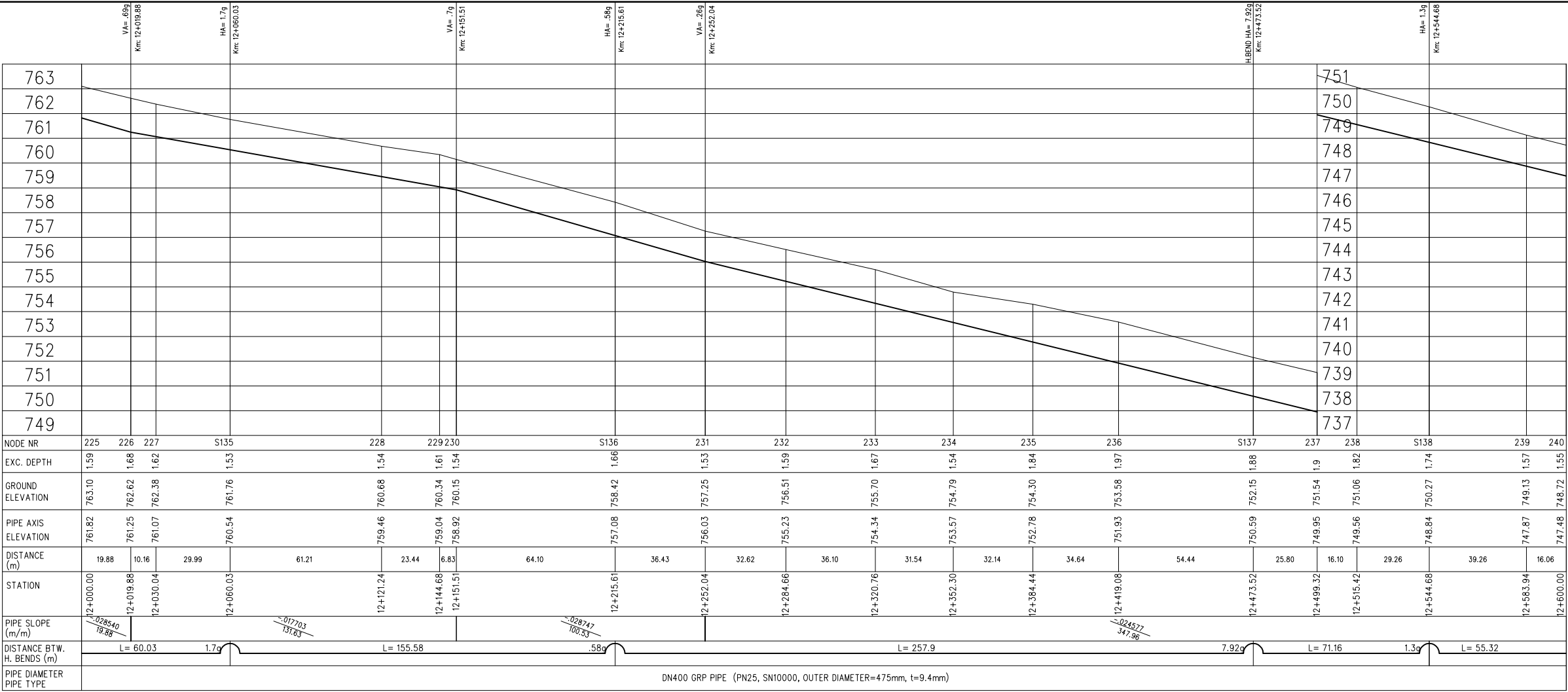
Category - City
SU-GUS-
Date
March 2010
Facility Code -
Number
09-02(19)
Revision Number
Rev.0



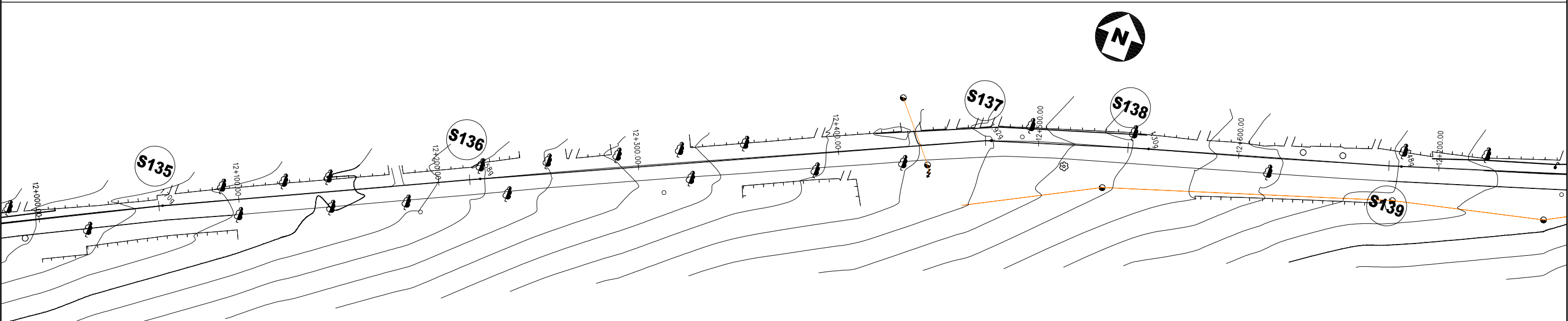
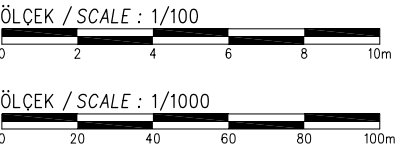
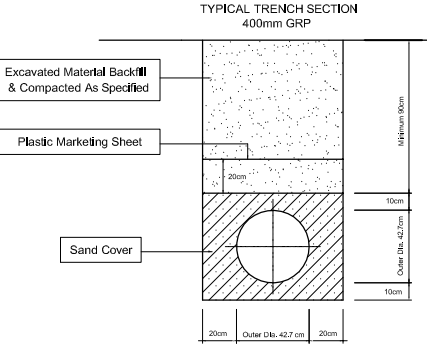
- LEGEND
- △ AIR VALVE
 - ▽ WASHOUT VALVE
 - ⊗ LINE VALVE
 - V. BEND = VERTICAL BEND
 - H. BEND = HORIZONTAL BEND
 - C. BEND = COMBINED BEND
 - VA = VERTICAL ANGLE (in grad)
 - HA = HORIZONTAL ANGLE (in grad)
 - CA = COMBINED ANGLE (in grad)
 - AV = AIR VALVE
 - WV = WASHOUT VALVE
 - LV = LINE VALVE



SPECIAL ASSISTANCE FOR PROJECT IMPLEMENTATION (SAPI) FOR THE PROVINCIAL CITIES WATER SUPPLY AND SEWERAGE PROJECT IN THE REPUBLIC OF AZERBAIJAN					AZERSU JOINT STOCK COMPANY, the Republic of Azerbaijan Japan International Cooperation Agency (JICA), Japan		Site : Gusar	Facility : Plan & Profile of TL From Gusar River Left Bank Water Source to Zone I Serv. Res.	Title : Between KM: 11+400.00 - 12+000.00	Scale of Drawing : 1/1000 Original Size of Paper : A1	Category - City SU-GUS- Date March 2010	Facility Code - Number 09-02(20) Revision Number Rev.0
--	--	--	--	--	--	--	-----------------	---	---	--	--	--



- LEGEND
- AIR VALVE
 - WASHOUT VALVE
 - LINE VALVE
 - V. BEND = VERTICAL BEND
 - H. BEND = HORIZONTAL BEND
 - C. BEND = COMBINED BEND
 - VA = VERTICAL ANGLE (in grad)
 - HA = HORIZONTAL ANGLE (in grad)
 - CA = COMBINED ANGLE (in grad)
 - AV = AIR VALVE
 - WV = WASHOUT VALVE
 - LV = LINE VALVE



NODE NR	COORDINATES		STATION (m)	DISTANCE (m)	ANGLE (grad)
	NORTH	EAST			
S135	4589190.86	281962.23	12+060.03	135.99	1.70
S136	4589257.73	282102.70	12+215.61	155.58	0.58
S137	4589366.46	282336.57	12+473.52	257.91	7.92
S138	4589388.22	282404.32	12+544.68	71.16	1.30

SPECIAL ASSISTANCE FOR PROJECT IMPLEMENTATION (SAPI) FOR
THE PROVINCIAL CITIES WATER SUPPLY AND SEWERAGE PROJECT
IN THE REPUBLIC OF AZERBAIJAN

AZERSU JOINT STOCK COMPANY,
the Republic of Azerbaijan
Japan International Cooperation Agency
(JICA), Japan

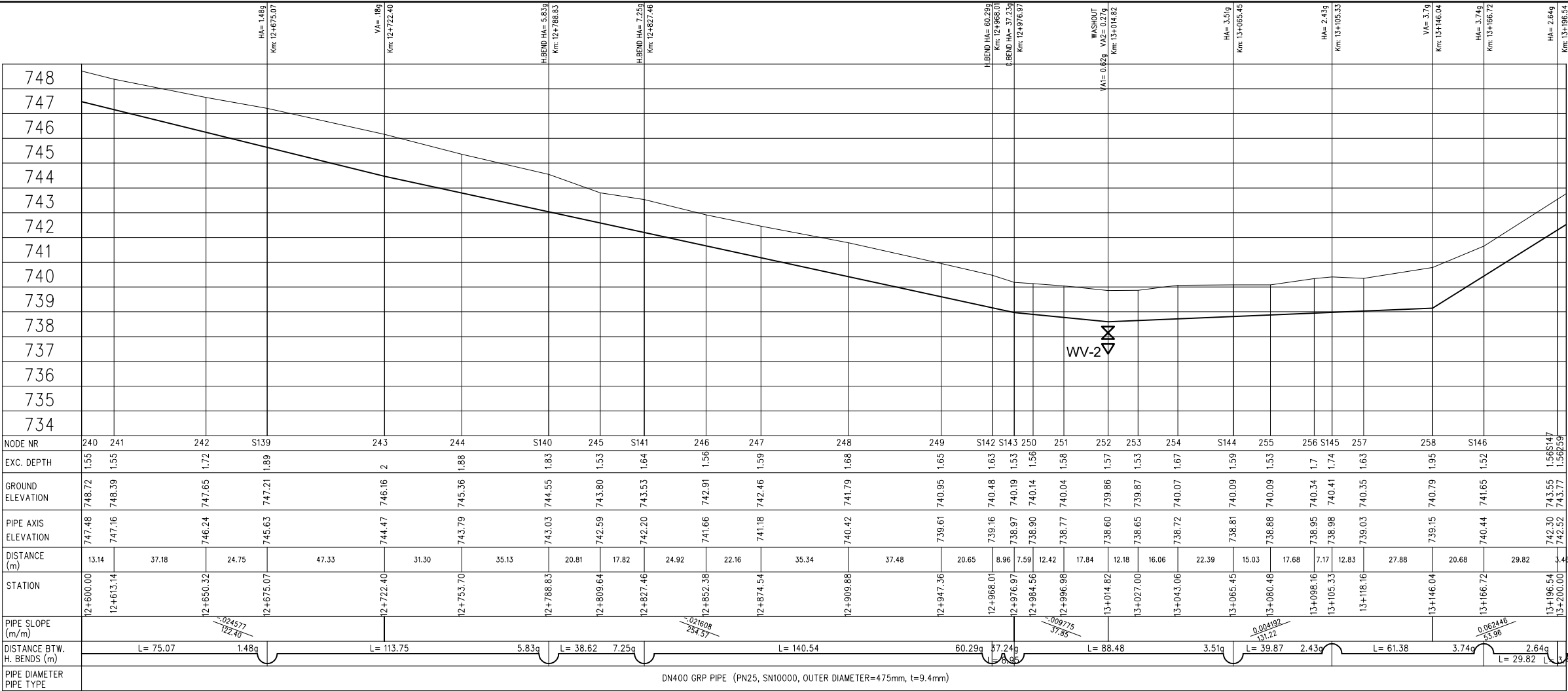
Site :
Gusar

Facility :
Plan & Profile of TL From
Gusar River Left Bank
Water Source to Zone I Serv. Res.

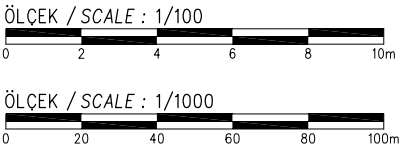
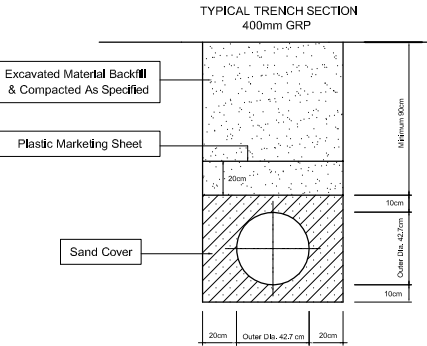
Title :
Between
KM: 12+000.00 - 12+600.00

Scale of
Drawing :
1/1000
Original Size of
Paper :
A1

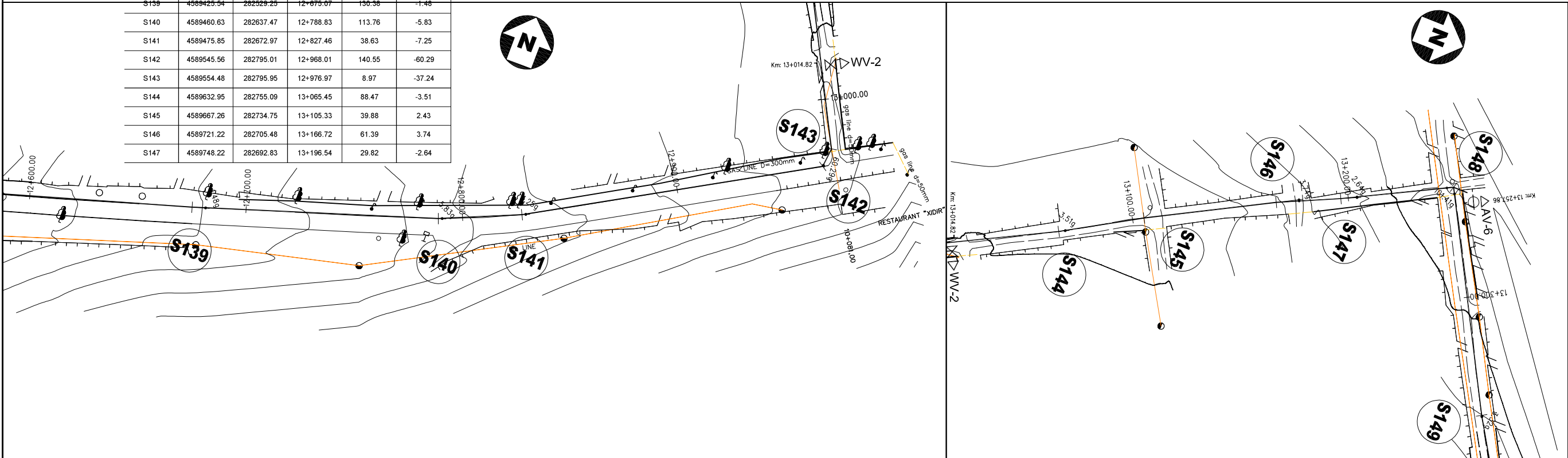
Category - City
SU-GUS-
Date
March 2010
Facility Code -
Number
09-02(21)
Revision Number
Rev.0



- LEGEND
- V. BEND = VERTICAL BEND
 - H. BEND = HORIZONTAL BEND
 - C. BEND = COMBINED BEND
 - VA = VERTICAL ANGLE (in grad)
 - HA = HORIZONTAL ANGLE (in grad)
 - CA = COMBINED ANGLE (in grad)
 - AV = AIR VALVE
 - WV = WASHOUT VALVE
 - LV = LINE VALVE



NODE NR	COORDINATES		STATION (m)	DISTANCE (m)	ANGLE (grad)
	NORTH	EAST			
S139	4589425.54	282529.25	12+675.07	130.38	-1.48
S140	4589460.63	282637.47	12+788.83	113.76	-5.83
S141	4589475.85	282672.97	12+827.46	38.63	-7.25
S142	4589545.56	282795.01	12+968.01	140.55	-60.29
S143	4589554.48	282795.95	12+976.97	8.97	-37.24
S144	4589632.95	282755.09	13+065.45	88.47	-3.51
S145	4589667.26	282734.75	13+105.33	39.88	2.43
S146	4589721.22	282705.48	13+166.72	61.39	3.74
S147	4589748.22	282692.83	13+196.54	29.82	-2.64



SPECIAL ASSISTANCE FOR PROJECT IMPLEMENTATION (SAPI) FOR THE PROVINCIAL CITIES WATER SUPPLY AND SEWERAGE PROJECT IN THE REPUBLIC OF AZERBAIJAN

AZERSU JOINT STOCK COMPANY,
the Republic of Azerbaijan
Japan International Cooperation Agency
(JICA), Japan

Site :
Gusar

Facility :
Plan & Profile of TL From
Gusar River Left Bank
Water Source to Zone I Serv. Res.

Title :
Between
KM: 12+600.00 - 13+200.00

Scale of
Drawing :
1/1000
Original Size of
Paper :
A1

Category - City
SU-GUS-
Date
March 2010
Facility Code -
Number
09-02(22)
Revision Number
Rev.0

