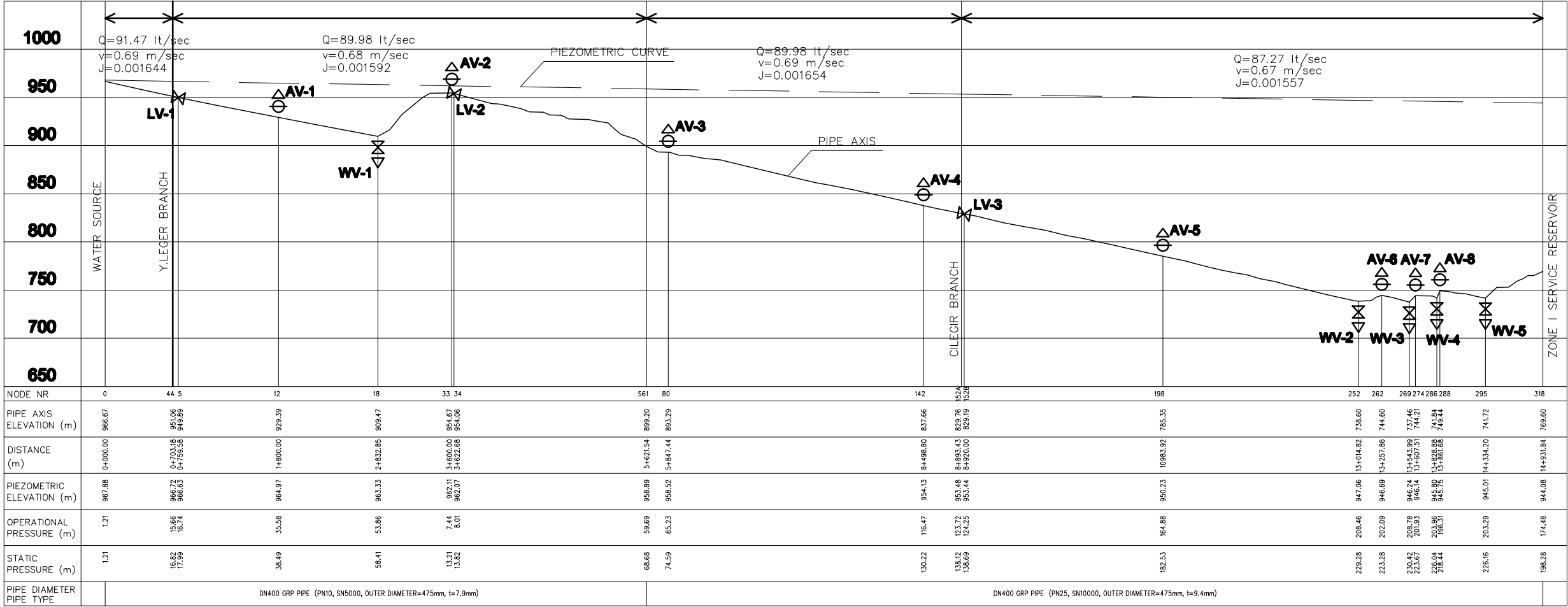


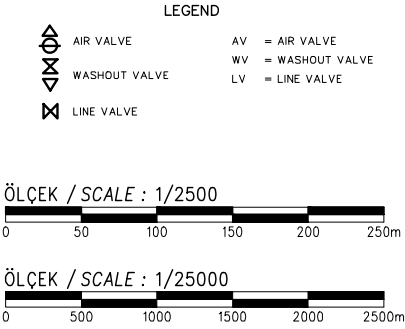
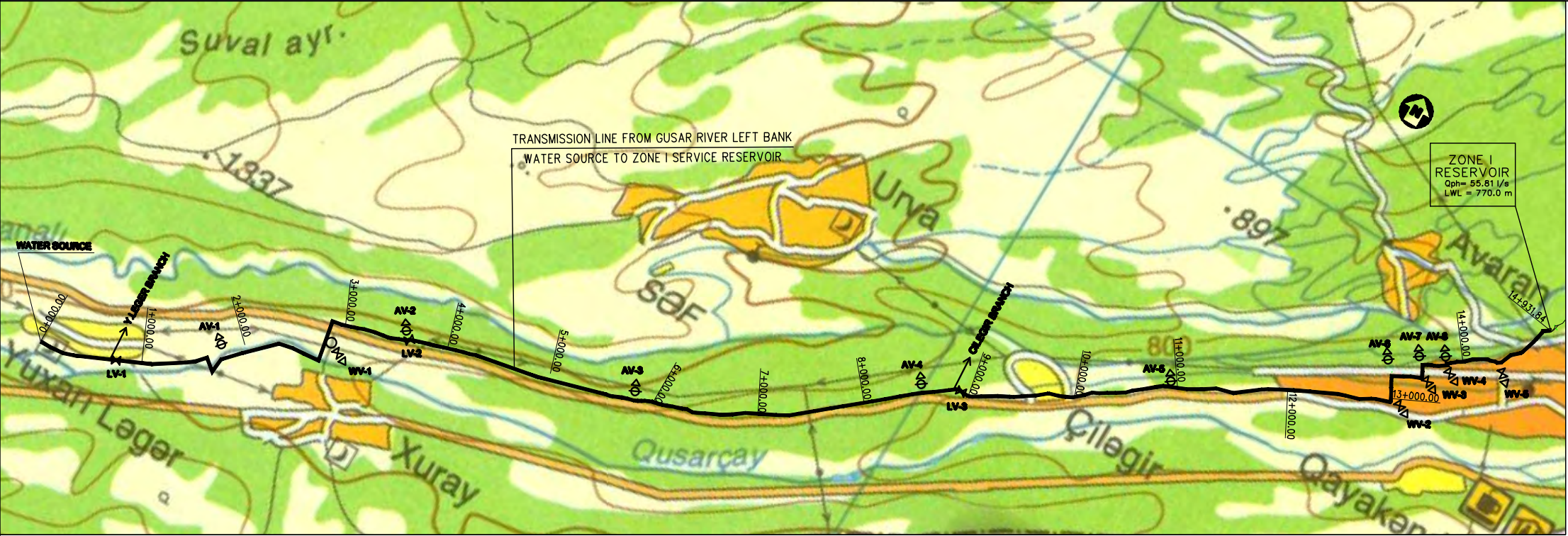
GUSAR

QUSAR

Gusar Transmission Lines From Water Source to Left Bank Zone I Service Reservoir

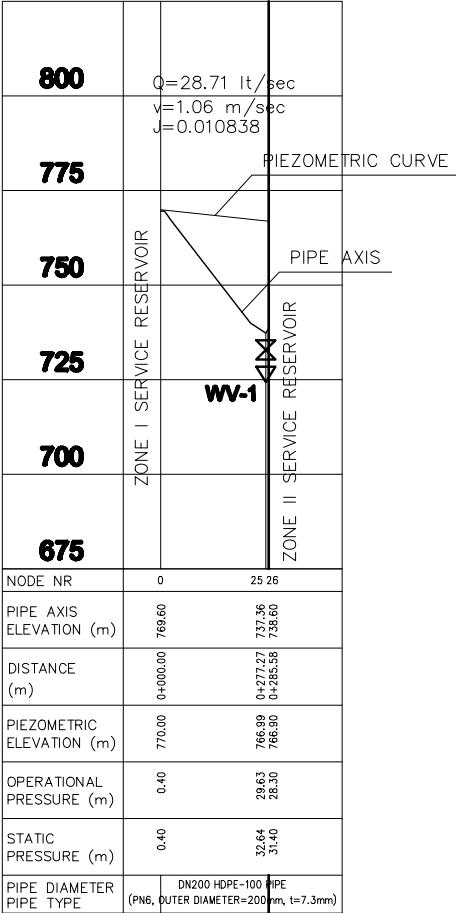


1/2500
1/25000

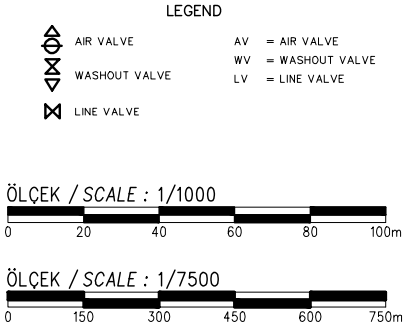
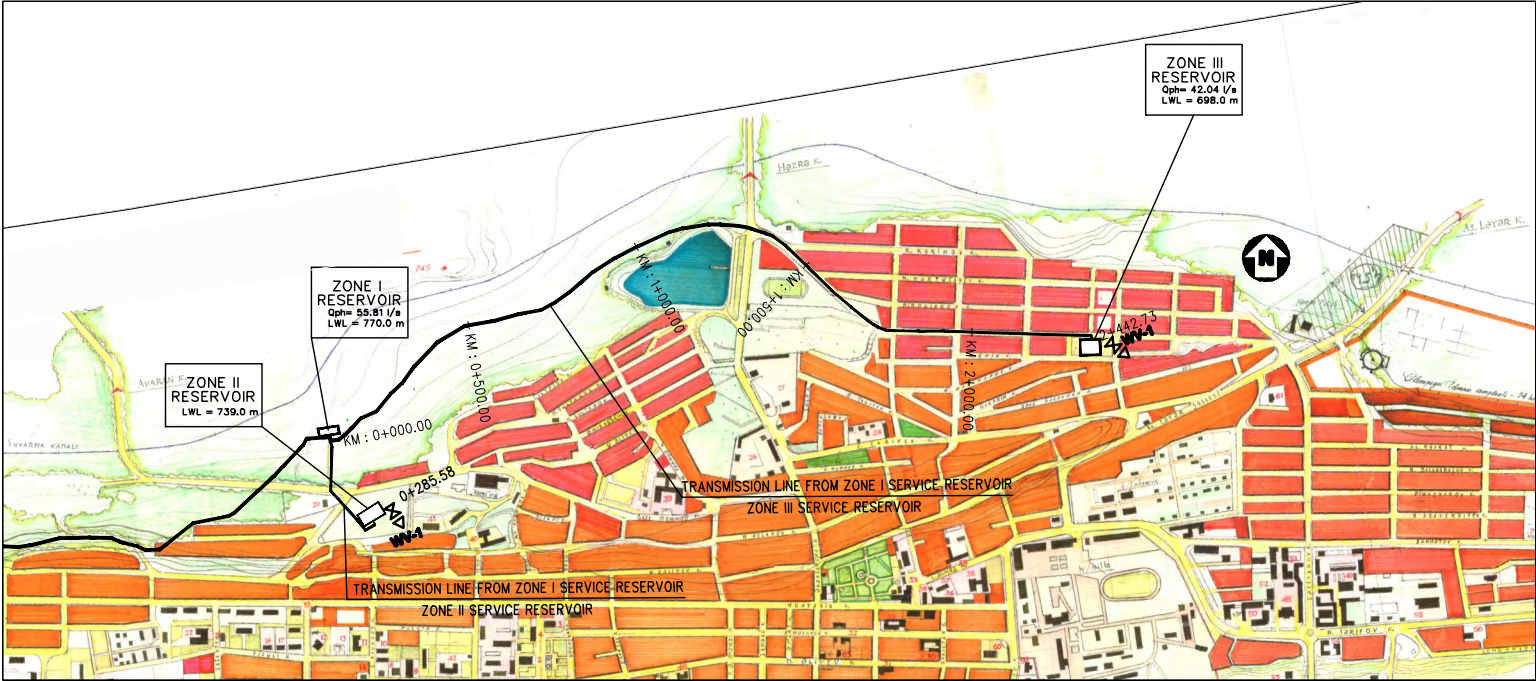
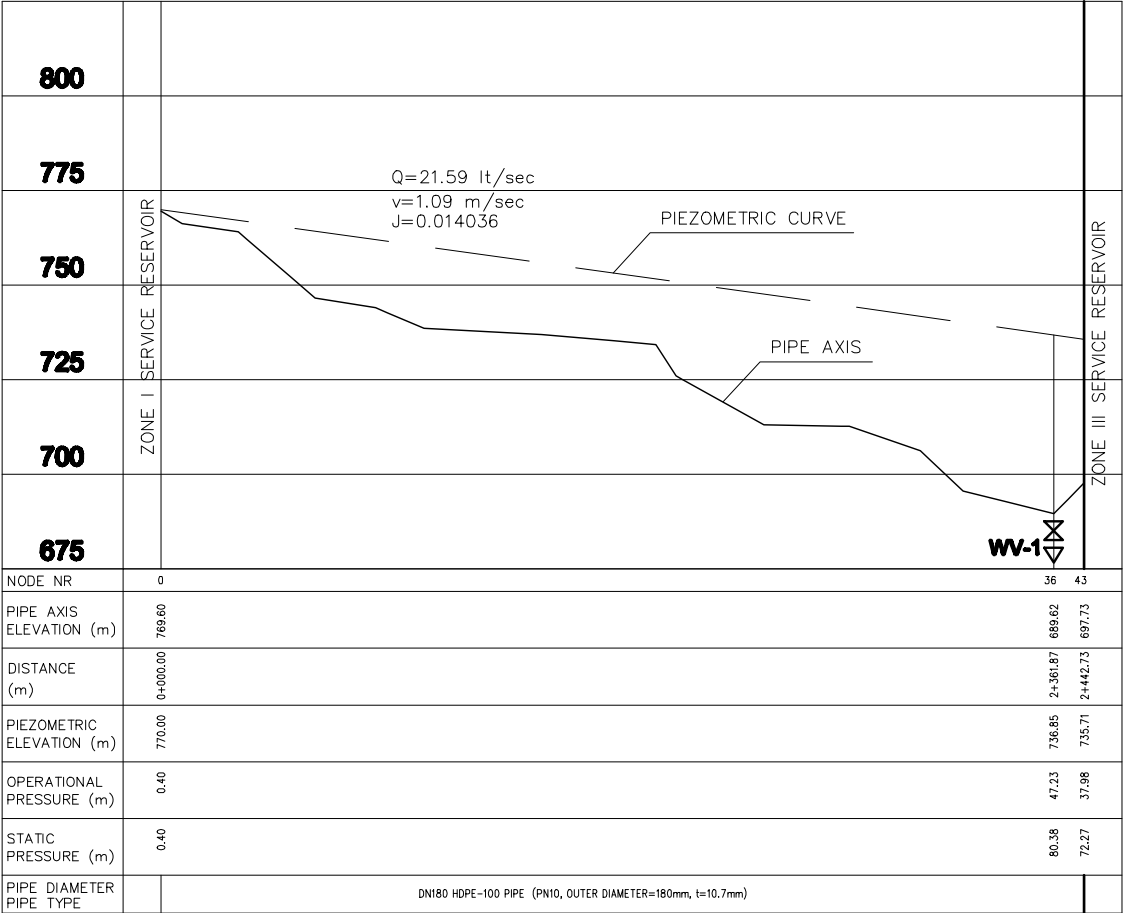


SPECIAL ASSISTANCE FOR PROJECT IMPLEMENTATION (SAPI) FOR THE PROVINCIAL CITIES WATER SUPPLY AND SEWERAGE PROJECT IN THE REPUBLIC OF AZERBAIJAN	AZERSU JOINT STOCK COMPANY, the Republic of Azerbaijan		Site :	Facility :	Title :	Scale of Drawing : 1/25000 Original Size of Paper : A1	Category - City SU-GUS-09-01(01) Date March 2010	Facility Code - Number 09-01(01) Revision Number Rev.0
	Japan International Cooperation Agency (JICA), Japan		Gusar	Gusar Transmission Lines	Plan & Hydraulic Profile (1/3)			

Gusar Transmission Lines From Left Bank
Zone I Service Reservoir to Zone II Service Reservoir



Gusar Transmission Lines From Left Bank
Zone I Service Reservoir to Zone III Service Reservoir



SPECIAL ASSISTANCE FOR PROJECT IMPLEMENTATION (SAPI) FOR
THE PROVINCIAL CITIES WATER SUPPLY AND SEWERAGE PROJECT
IN THE REPUBLIC OF AZERBAIJAN

AZERSU JOINT STOCK COMPANY,
the Republic of Azerbaijan
Japan International Cooperation Agency
(JICA), Japan

Site :
Gusar

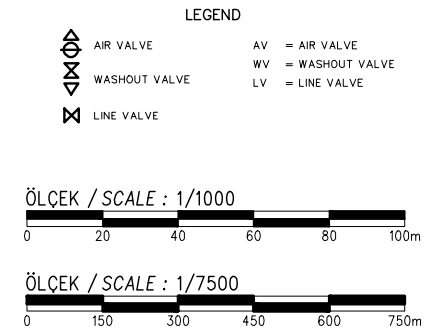
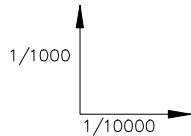
Facility :
Gusar Transmission Lines

Title :
Plan & Hydraulic Profile (2/3)

Scale of
Drawing :
Original Size of
Paper :
1/10000
A1

Category - City
SU-GUS-
Date
March 2010
Facility Code -
Number
09-01(02)
Revision Number
Rev.0

Gusar Transmission Lines From Righth Bank Water Source to Zone Service Reservoir

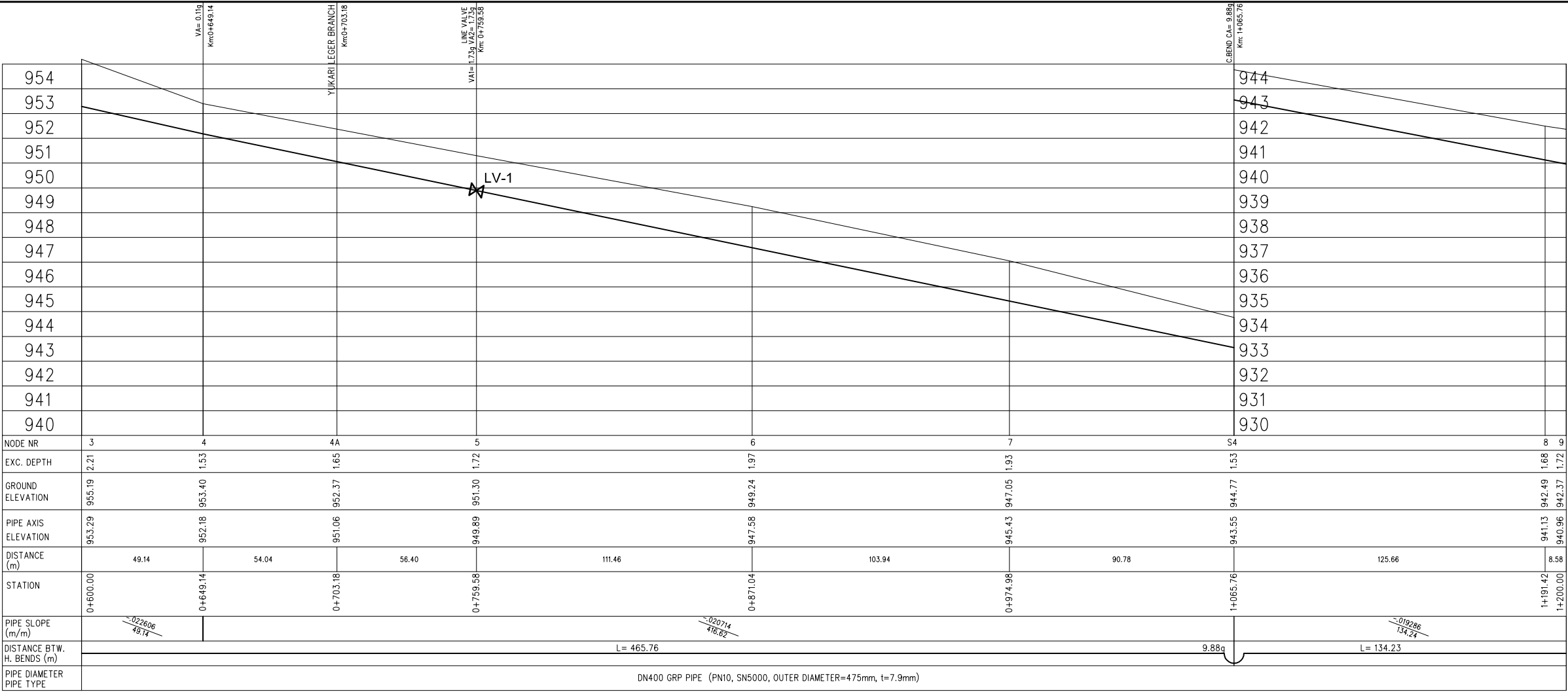


**AZERSU JOINT STOCK COMPANY,
the Republic of Azerbaijan
Japan International Cooperation Agency
(JICA), Japan**

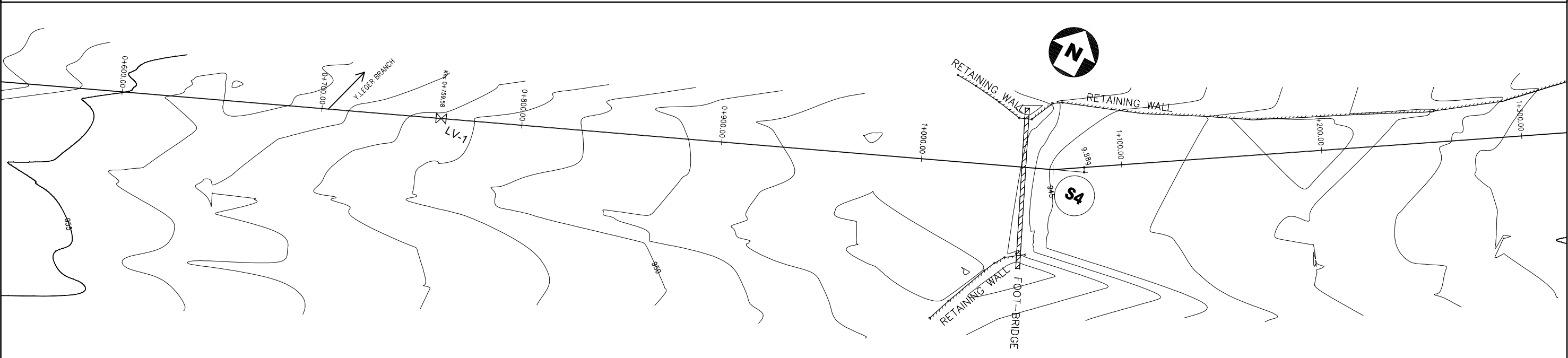
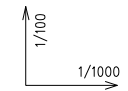
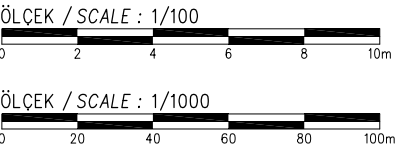
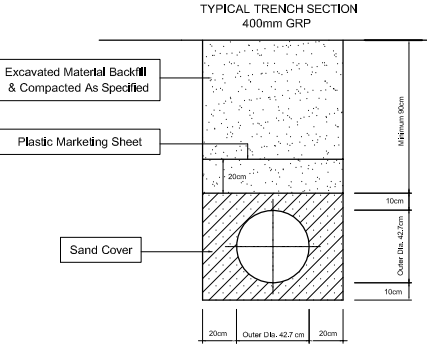
Facility :
Gusar Transmission Lines

Scale of Drawing :	1/10000
Original Size of Paper :	A1

Category - City	Facility Code - Number
SU-GUS-	09-01(03)
Date	Revision Number
March 2010	Rev.0



- LEGEND
- AIR VALVE
 - WASHOUT VALVE
 - LINE VALVE
 - V. BEND = VERTICAL BEND
 - H. BEND = HORIZONTAL BEND
 - C. BEND = COMBINED BEND
 - VA = VERTICAL ANGLE (in grad)
 - HA = HORIZONTAL ANGLE (in grad)
 - CA = COMBINED ANGLE (in grad)
 - AV = AIR VALVE
 - WV = WASHOUT VALVE
 - LV = LINE VALVE



NODE NR	COORDINATES		STATION (m)	DISTANCE (m)	ANGLE (grad)
	NORTH	EAST			
S4	4584064.22	272611.74	1+065.76	725.15	-9.88

SPECIAL ASSISTANCE FOR PROJECT IMPLEMENTATION (SAPI) FOR THE PROVINCIAL CITIES WATER SUPPLY AND SEWERAGE PROJECT IN THE REPUBLIC OF AZERBAIJAN

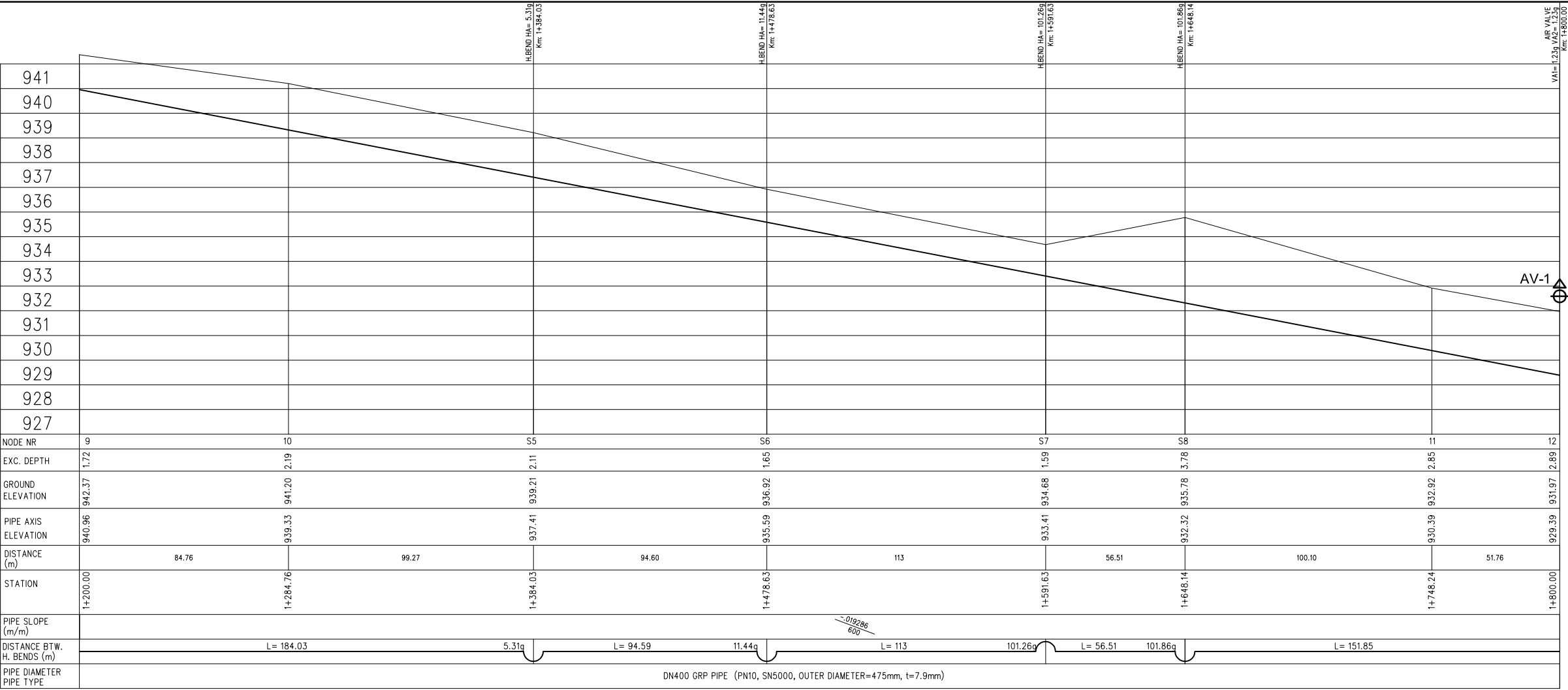
AZERSU JOINT STOCK COMPANY,
the Republic of Azerbaijan
Japan International Cooperation Agency
(JICA), Japan

Site :
Gusar
Facility :
Plan & Profile of TL From
Gusar River Left Bank
Water Source to Zone I Serv. Res.

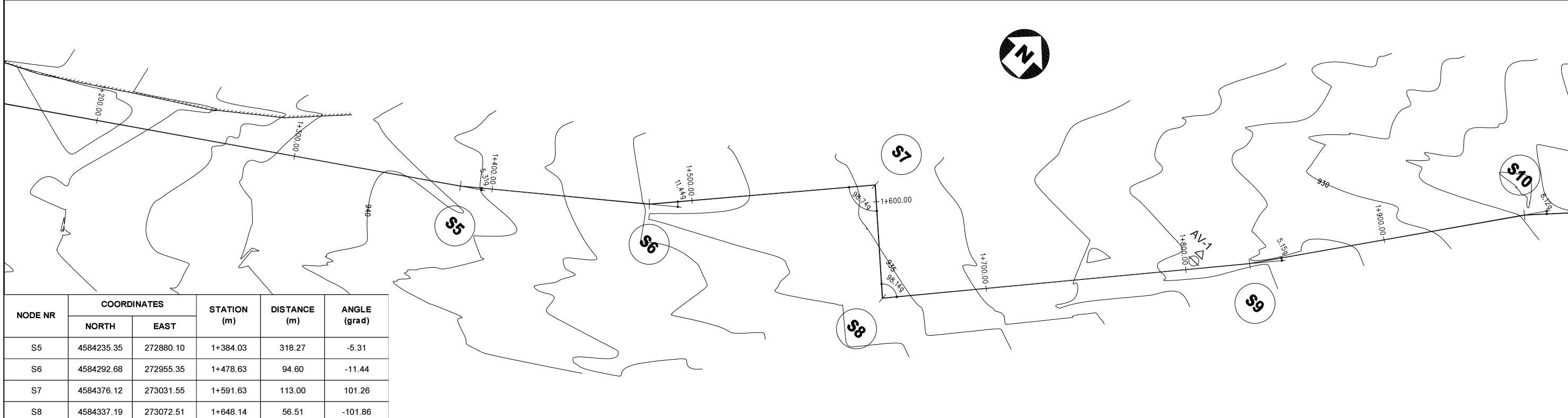
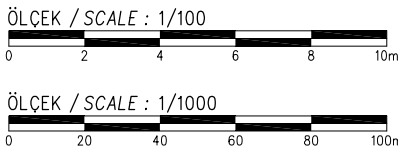
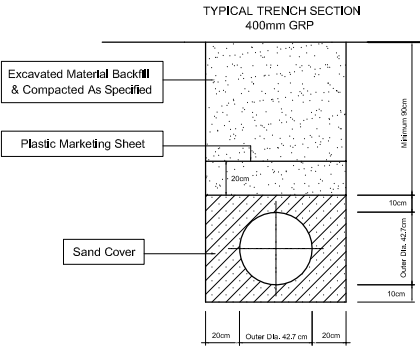
Title :
Between
KM: 0+600.00 - 1+200.00

Scale of
Drawing :
1/1000
Original Size of
Paper :
A1

Category - City
SU-GUS-
Date
March 2010
Facility Code -
Number
09-02(02)
Revision Number
Rev.0



- LEGEND
- V. BEND = VERTICAL BEND
 - H. BEND = HORIZONTAL BEND
 - C. BEND = COMBINED BEND
 - VA = VERTICAL ANGLE (in grad)
 - HA = HORIZONTAL ANGLE (in grad)
 - CA = COMBINED ANGLE (in grad)
 - AV = AIR VALVE
 - WV = WASHOUT VALVE
 - LV = LINE VALVE



SPECIAL ASSISTANCE FOR PROJECT IMPLEMENTATION (SAPI) FOR THE PROVINCIAL CITIES WATER SUPPLY AND SEWERAGE PROJECT IN THE REPUBLIC OF AZERBAIJAN

AZERSU JOINT STOCK COMPANY,
the Republic of Azerbaijan
Japan International Cooperation Agency
(JICA), Japan

Site :
Gusar

Facility :
Plan & Profile of TL From
Gusar River Left Bank
Water Source to Zone I Serv. Res.

Title :
Between
KM: 1+200.00 - 1+800.00

Scale of
Drawing :
1/1000

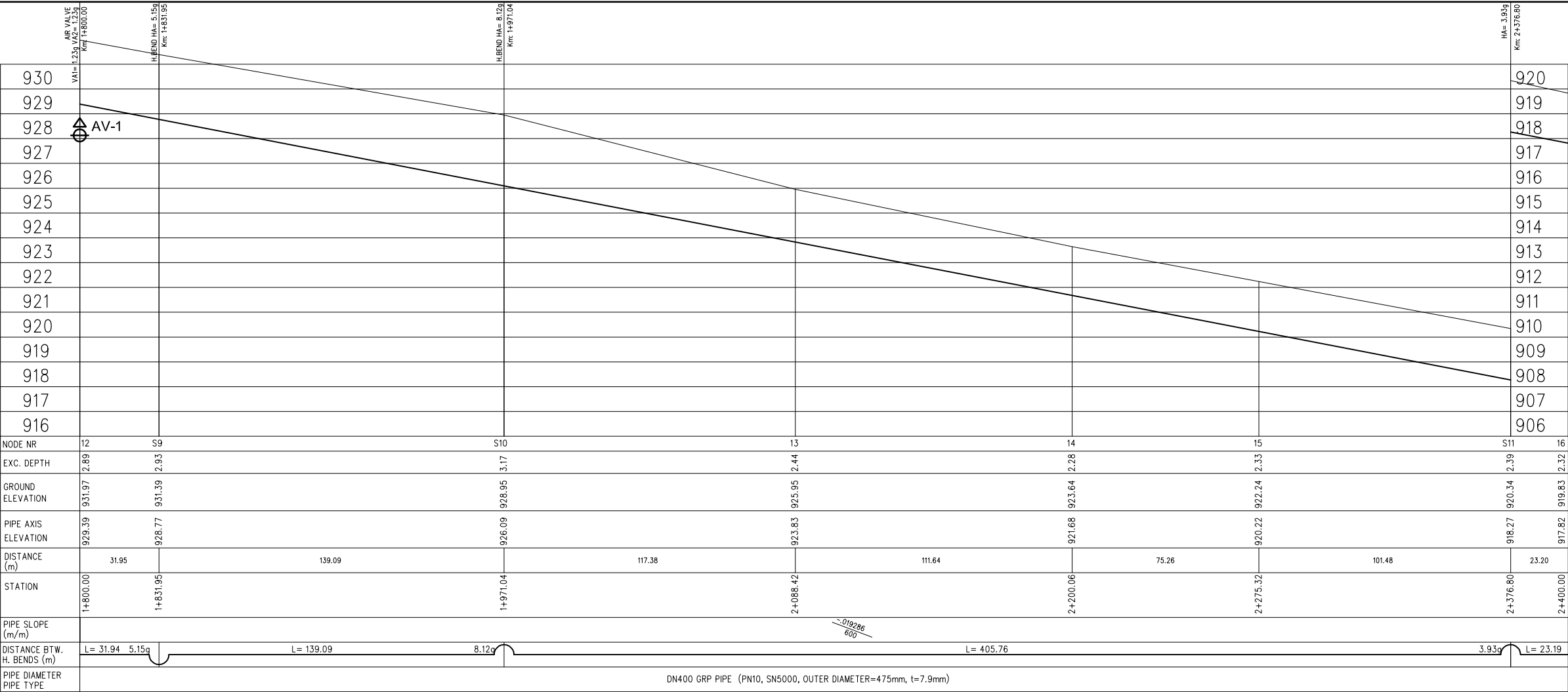
Original Size of
Paper :
A1

Category - City
SU-GUS-

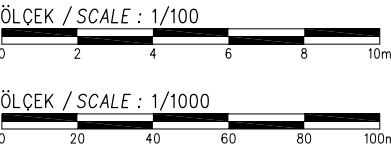
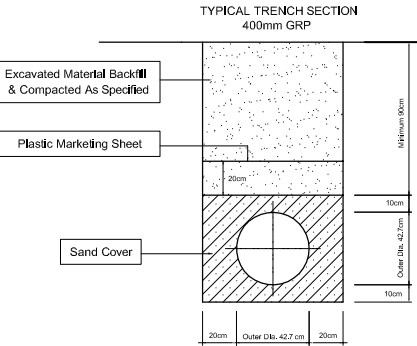
Facility Code -
Number
09-02(03)

Date
March 2010

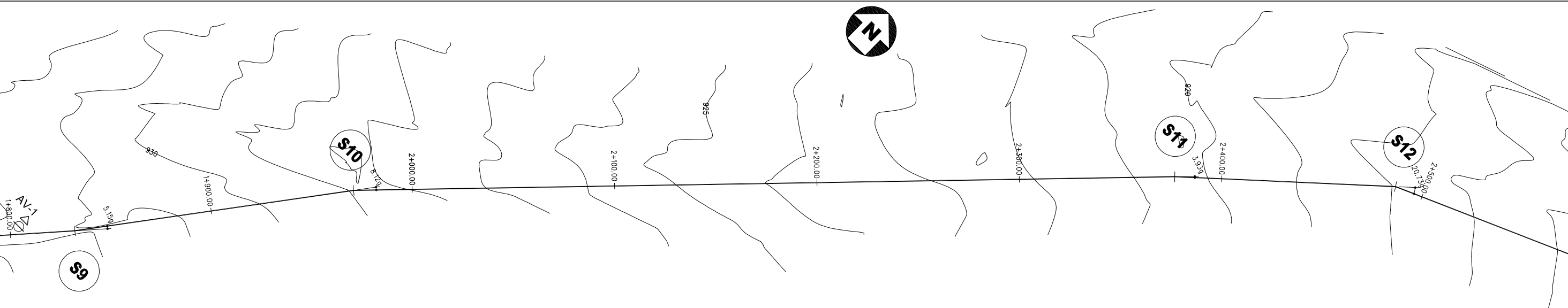
Revision Number
Rev.0



- LEGEND
- = VERTICAL BEND
 - = HORIZONTAL BEND
 - = COMBINED BEND
 - VA = VERTICAL ANGLE (in grad)
 - HA = HORIZONTAL ANGLE (in grad)
 - CA = COMBINED ANGLE (in grad)
 - AV = AIR VALVE
 - WV = WASHOUT VALVE
 - LV = LINE VALVE



1/100
1/1000



NODE NR	COORDINATES		STATION (m)	DISTANCE (m)	ANGLE (grad)
	NORTH	EAST			
S9	4584474.08	273195.18	1+831.95	183.81	-5.15
S10	4584584.83	273279.33	1+971.04	139.09	8.12
S11	4584874.06	273563.91	2+376.80	405.76	3.93

SPECIAL ASSISTANCE FOR PROJECT IMPLEMENTATION (SAPI) FOR
THE PROVINCIAL CITIES WATER SUPPLY AND SEWERAGE PROJECT
IN THE REPUBLIC OF AZERBAIJAN

AZERSU JOINT STOCK COMPANY,
the Republic of Azerbaijan
Japan International Cooperation Agency
(JICA), Japan

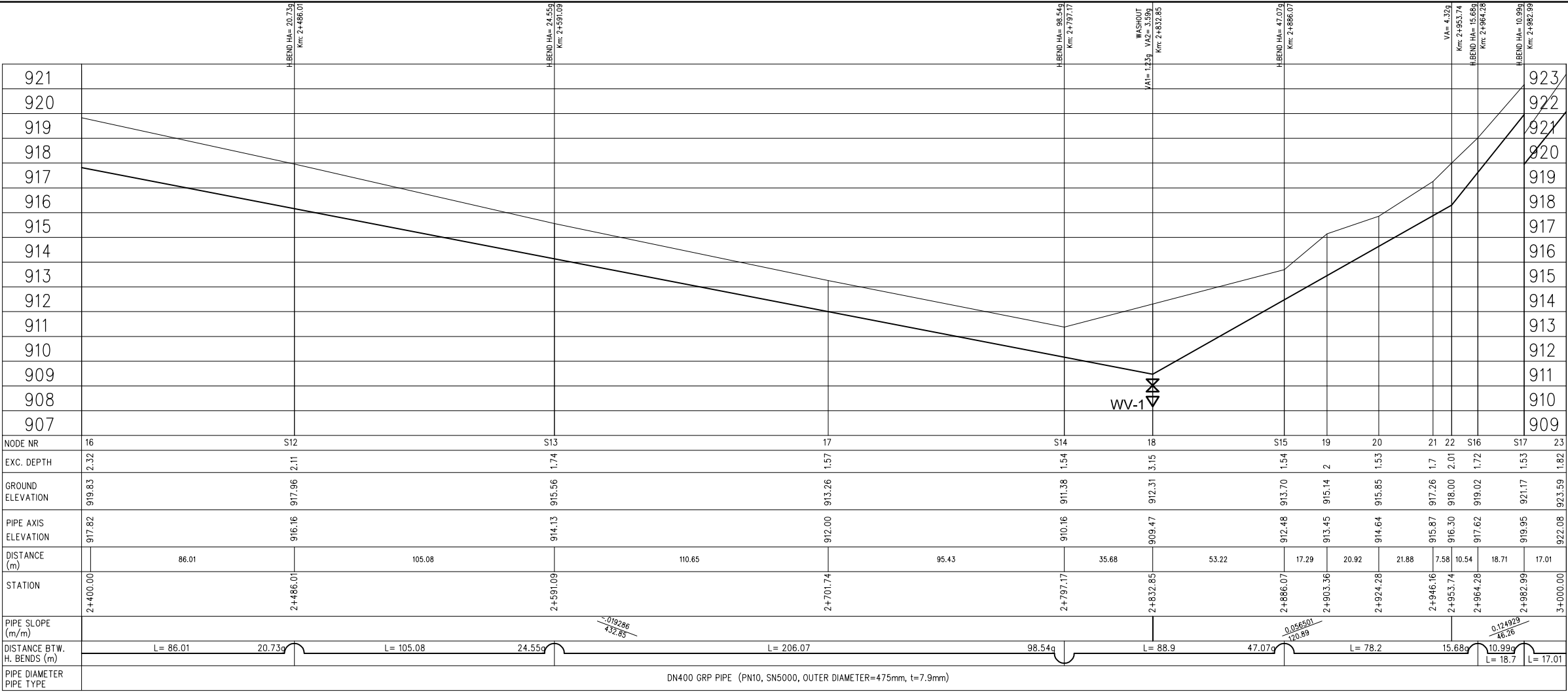
Site :
Gusar

Facility :
Plan & Profile of TL From
Gusar River Left Bank
Water Source to Zone I Serv. Res.

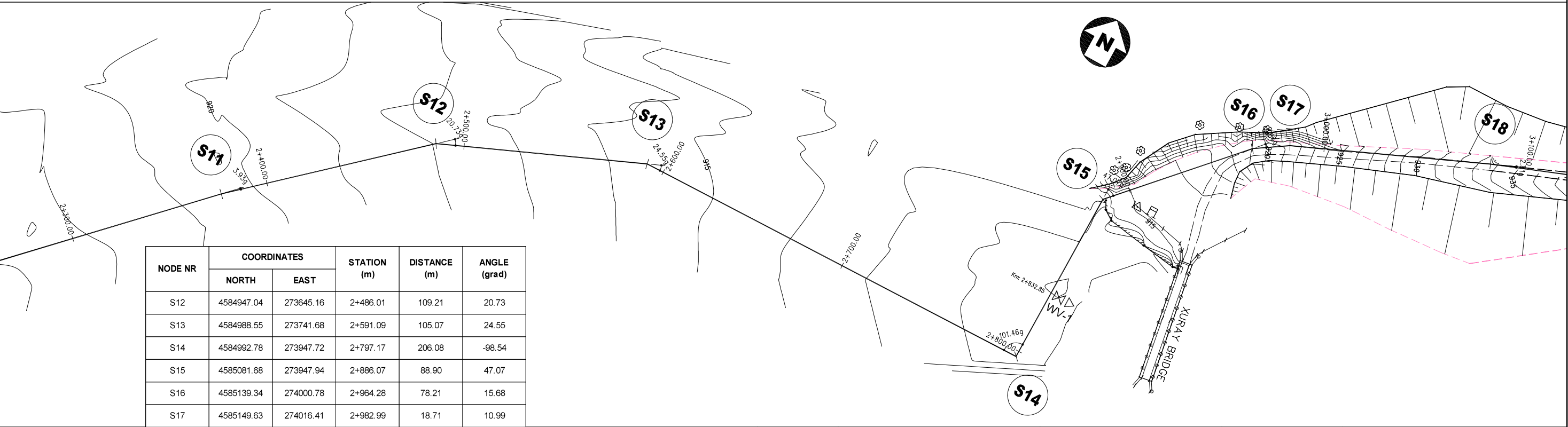
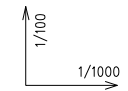
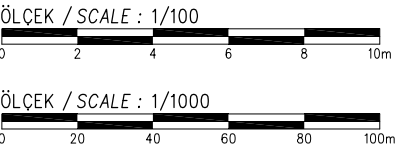
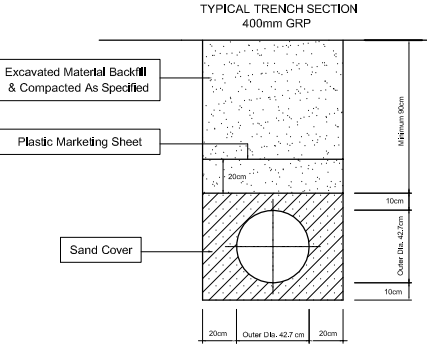
Title :
Between
KM: 1+800.00 - 2+400.00

Scale of
Drawing :
1/1000
Original Size of
Paper :
A1

Category - City
SU-GUS-
Date
March 2010
Facility Code -
Number
09-02(04)
Revision Number
Rev.0



- LEGEND
- V. BEND = VERTICAL BEND
 - H. BEND = HORIZONTAL BEND
 - C. BEND = COMBINED BEND
 - VA = VERTICAL ANGLE (in grad)
 - HA = HORIZONTAL ANGLE (in grad)
 - CA = COMBINED ANGLE (in grad)
 - AV = AIR VALVE
 - WV = WASHOUT VALVE
 - LV = LINE VALVE



SPECIAL ASSISTANCE FOR PROJECT IMPLEMENTATION (SAPI) FOR
THE PROVINCIAL CITIES WATER SUPPLY AND SEWERAGE PROJECT
IN THE REPUBLIC OF AZERBAIJAN

AZERSU JOINT STOCK COMPANY,
the Republic of Azerbaijan
Japan International Cooperation Agency
(JICA), Japan

Site :
Gusar

Facility :
Plan & Profile of TL From
Gusar River Left Bank
Water Source to Zone I Serv. Res.

Title :
Between
KM: 2+400.00 - 3+000.00

Scale of
Drawing :
1/1000
Original Size of
Paper :
A1

Category - City
SU-GUS-
Date
March 2010
Facility Code -
Number
09-02(05)
Revision Number
Rev.0