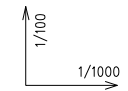
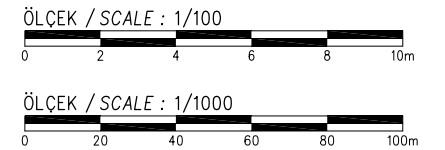
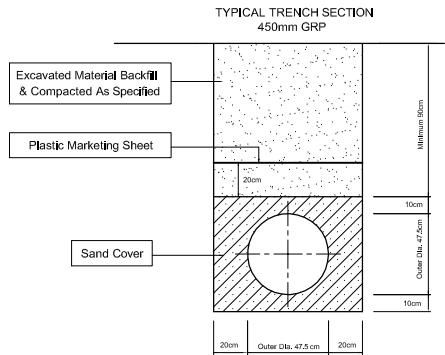
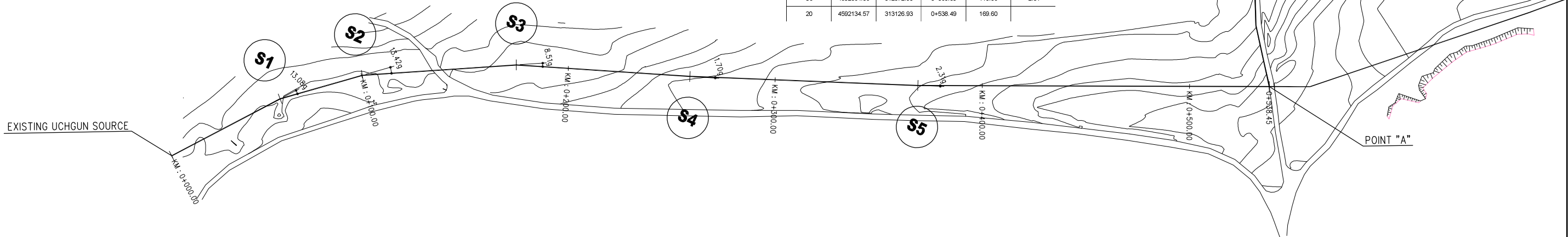


- LEGEND
- AIR VALVE
 - WASHOUT VALVE
 - LINE VALVE
 - V. BEND = VERTICAL BEND
 - H. BEND = HORIZONTAL BEND
 - C. BEND = COMBINED BEND
 - VA = VERTICAL ANGLE (in grad)
 - HA = HORIZONTAL ANGLE (in grad)
 - CA = COMBINED ANGLE (in grad)
 - AV = AIR VALVE
 - WV = WASHOUT VALVE
 - LV = LINE VALVE



NODE NR	COORDINATES		STATION (m)	DISTANCE (m)	ANGLE (grad)
	NORTH	EAST			
0	4591883.36	312659.45	0+000.00		
S1	4591930.15	312695.53	0+059.09	59.09	13.08
S2	4591956.99	312726.96	0+100.34	41.25	13.42
S3	4591992.56	312792.34	0+174.86	74.52	8.51
S4	4592022.45	312870.81	0+258.83	83.97	-1.70
S5	4592064.36	312972.58	0+368.89	110.06	-2.31
20	4592134.57	313126.93	0+538.49	169.60	



SPECIAL ASSISTANCE FOR PROJECT IMPLEMENTATION (SAPI) FOR
THE PROVINCIAL CITIES WATER SUPPLY AND SEWERAGE PROJECT
IN THE REPUBLIC OF AZERBAIJAN

AZERSU JOINT STOCK COMPANY,
the Republic of Azerbaijan
Japan International Cooperation Agency
(JICA), Japan

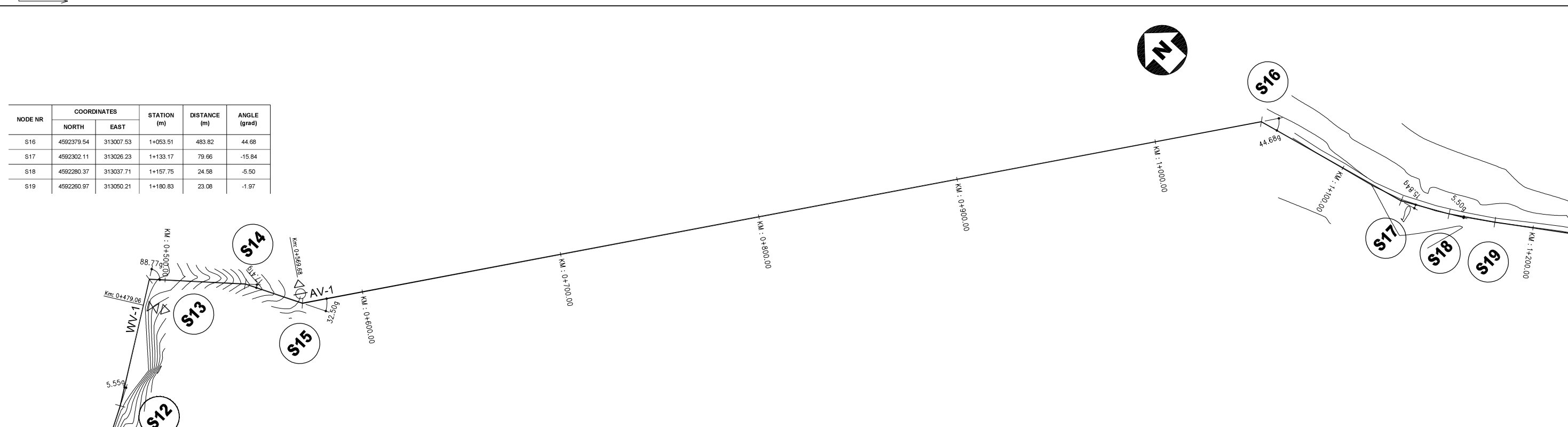
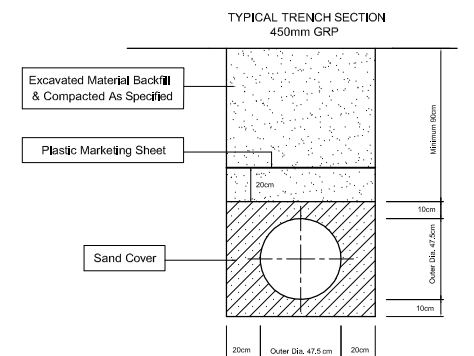
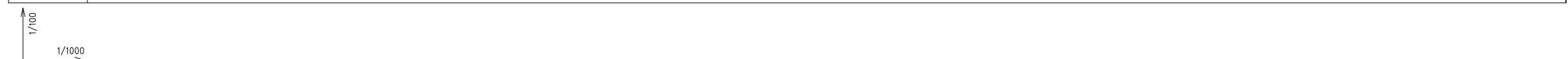
Site :
Khacmaz

Facility :
Plan & Profile of TL from
Existing Uchgun Source to
Point "A"

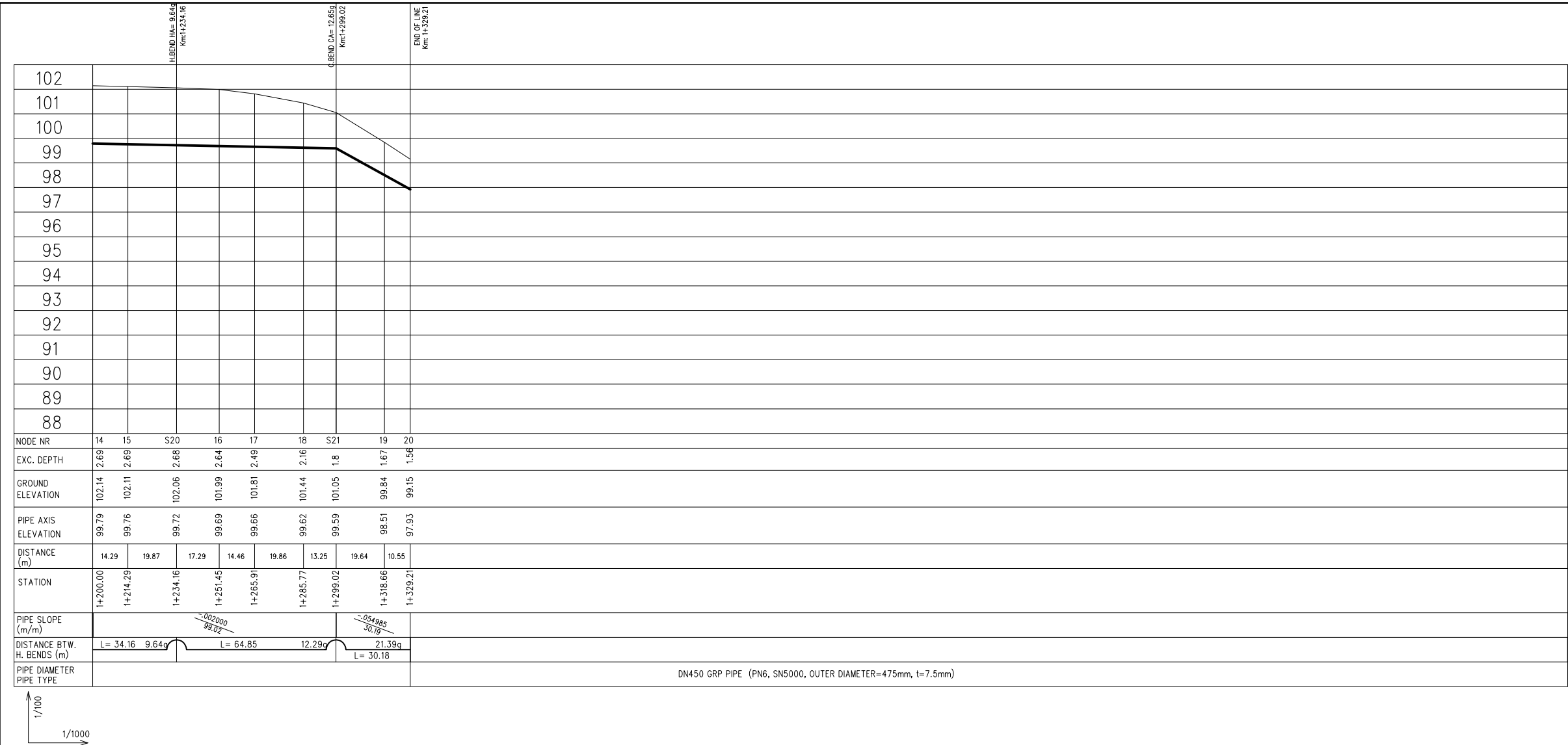
Title :
Between
KM: 0+000.00 - 0+538.49

Scale of
Drawing :
1/1000
Original Size of
Paper :
A1

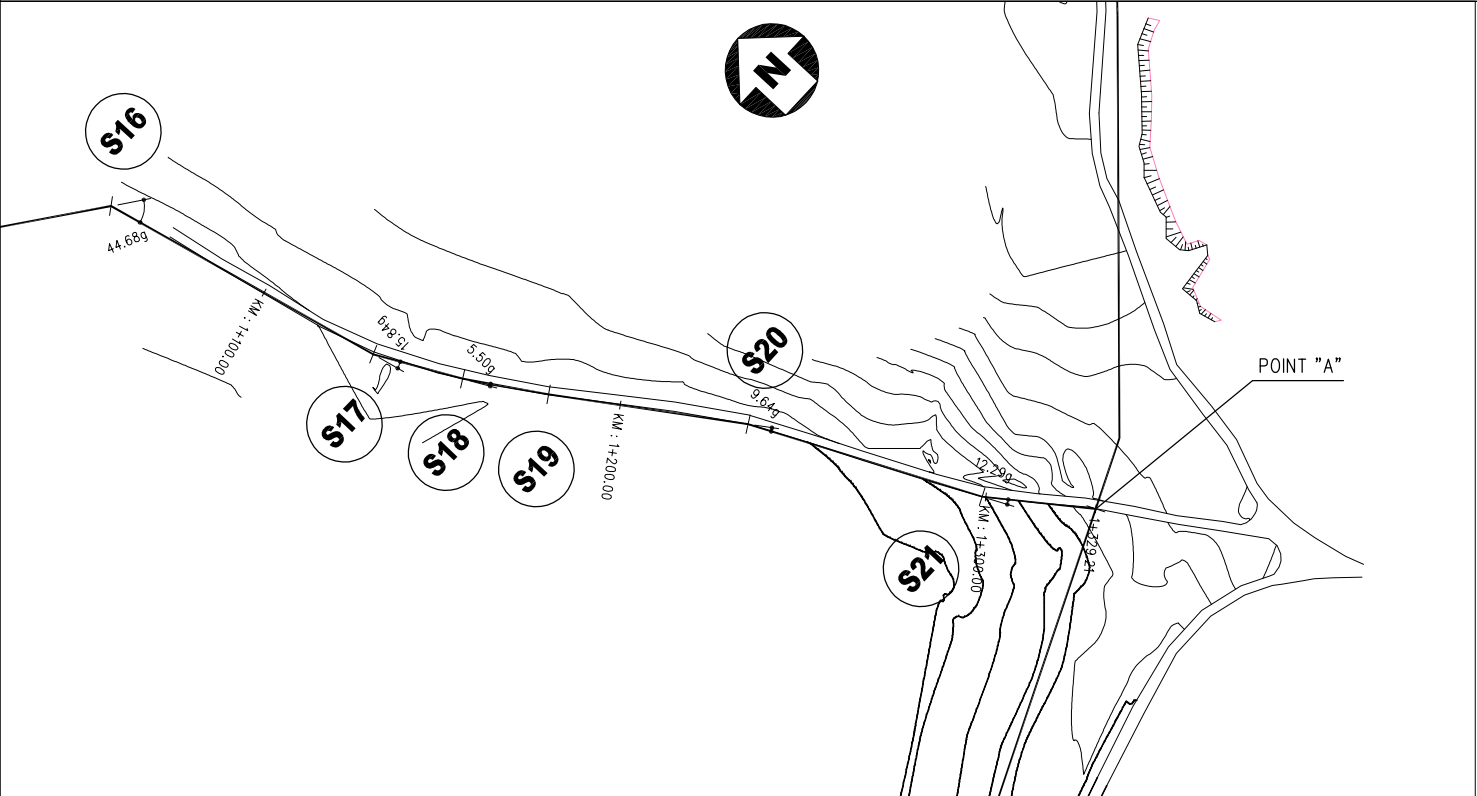
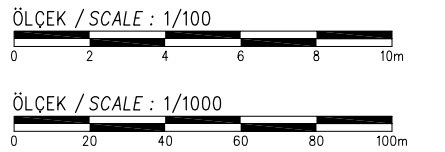
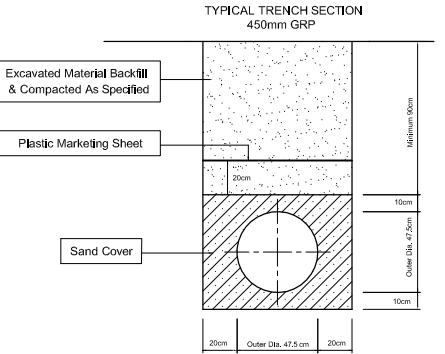
Category - City
SU-XAC
March 2010
Facility Code -
Number
09-02(01)
Revision Number
Rev.0



Category - City	Facility Code - Number
SU-XAC	09-03(02)
Date	Revision Number
March 2010	Rev 0

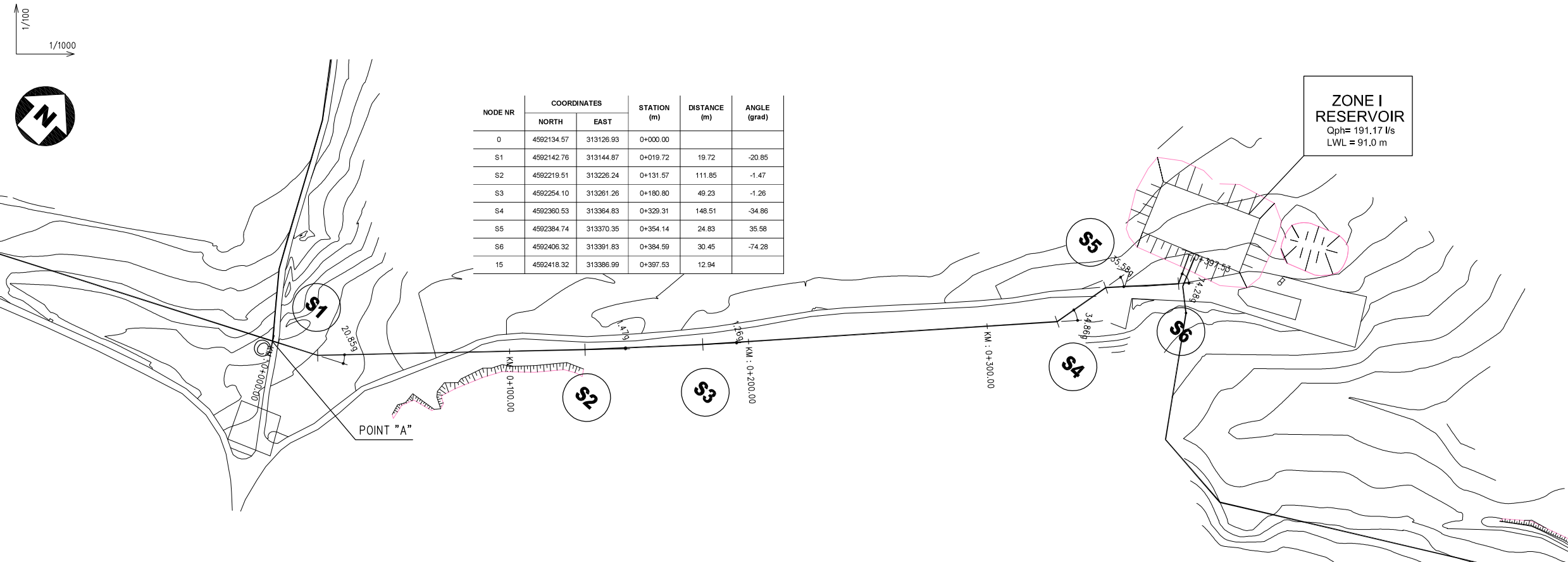
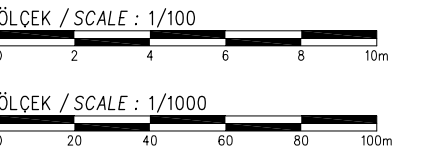
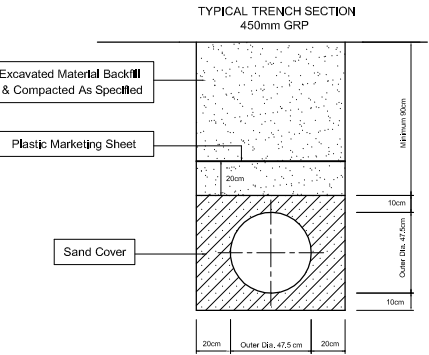
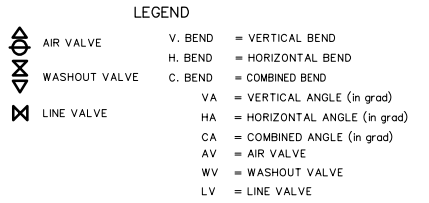
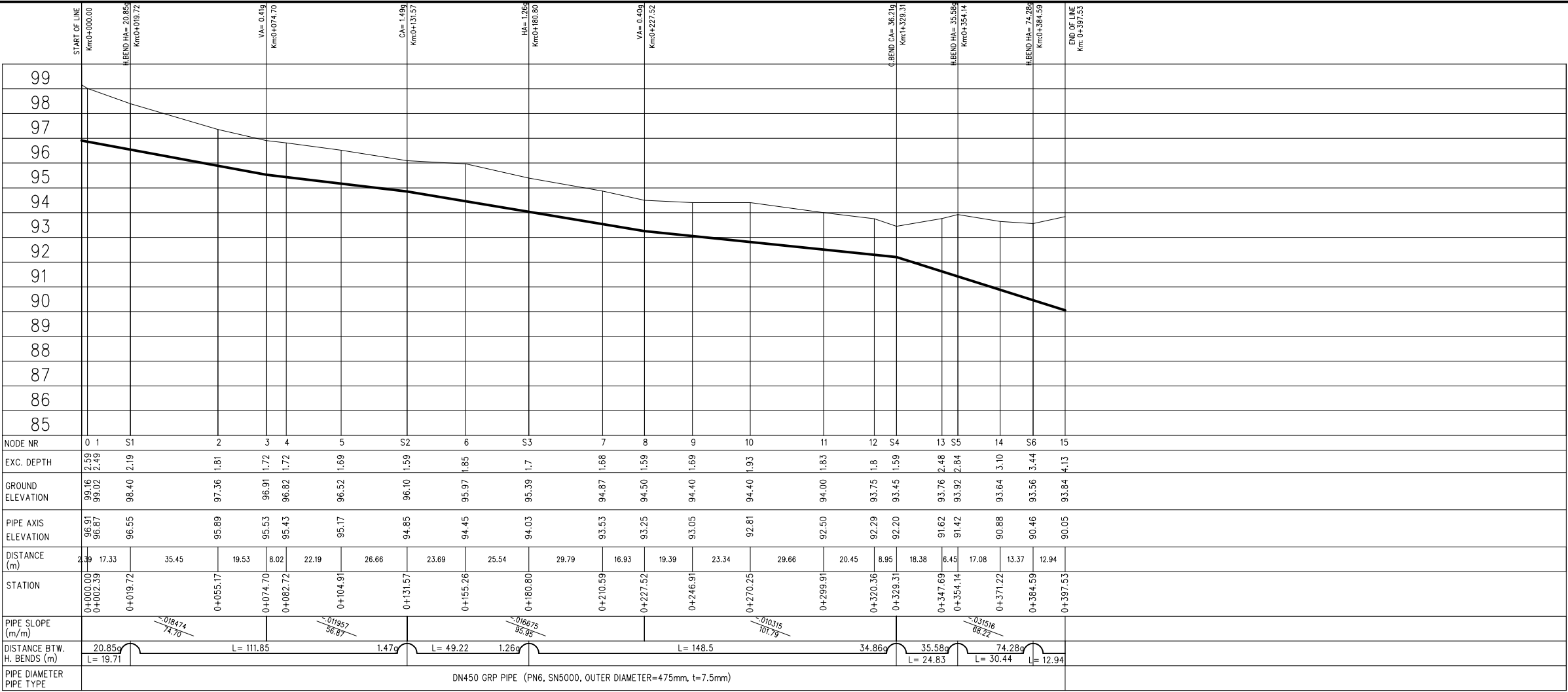


- LEGEND
- AIR VALVE
 - WASHOUT VALVE
 - LINE VALVE
 - V. BEND = VERTICAL BEND
 - H. BEND = HORIZONTAL BEND
 - C. BEND = COMBINED BEND
 - VA = VERTICAL ANGLE (in grad)
 - HA = HORIZONTAL ANGLE (in grad)
 - CA = COMBINED ANGLE (in grad)
 - AV = AIR VALVE
 - WV = WASHOUT VALVE
 - LV = LINE VALVE



NODE NR	COORDINATES		STATION (m)	DISTANCE (m)	ANGLE (grad)
	NORTH	EAST			
S20	4592217.05	313080.47	1+234.16	53.33	9.64
S21	4592158.70	313108.78	1+299.02	64.95	-12.29
20	4592134.57	313126.93	1+329.21	30.20	

SPECIAL ASSISTANCE FOR PROJECT IMPLEMENTATION (SAPI) FOR THE PROVINCIAL CITIES WATER SUPPLY AND SEWERAGE PROJECT IN THE REPUBLIC OF AZERBAIJAN	AZERSU JOINT STOCK COMPANY, the Republic of Azerbaijan Japan International Cooperation Agency (JICA), Japan	Site : Gusar	Facility : Plan & Profile of TL from New Uchgun Source to Point "A"	Title : Between KM: 1+200.00 - 1+329.21	Scale of Drawing : 1/1000	Category - City SU-XAC	Facility Code - Number 09-03(03)
					Original Size of Paper : A1	Date March 2010	Revision Number Rev.0



SPECIAL ASSISTANCE FOR PROJECT IMPLEMENTATION (SAPI) FOR THE PROVINCIAL CITIES WATER SUPPLY AND SEWERAGE PROJECT IN THE REPUBLIC OF AZERBAIJAN

AZERSU JOINT STOCK COMPANY, the Republic of Azerbaijan
Japan International Cooperation Agency (JICA), Japan

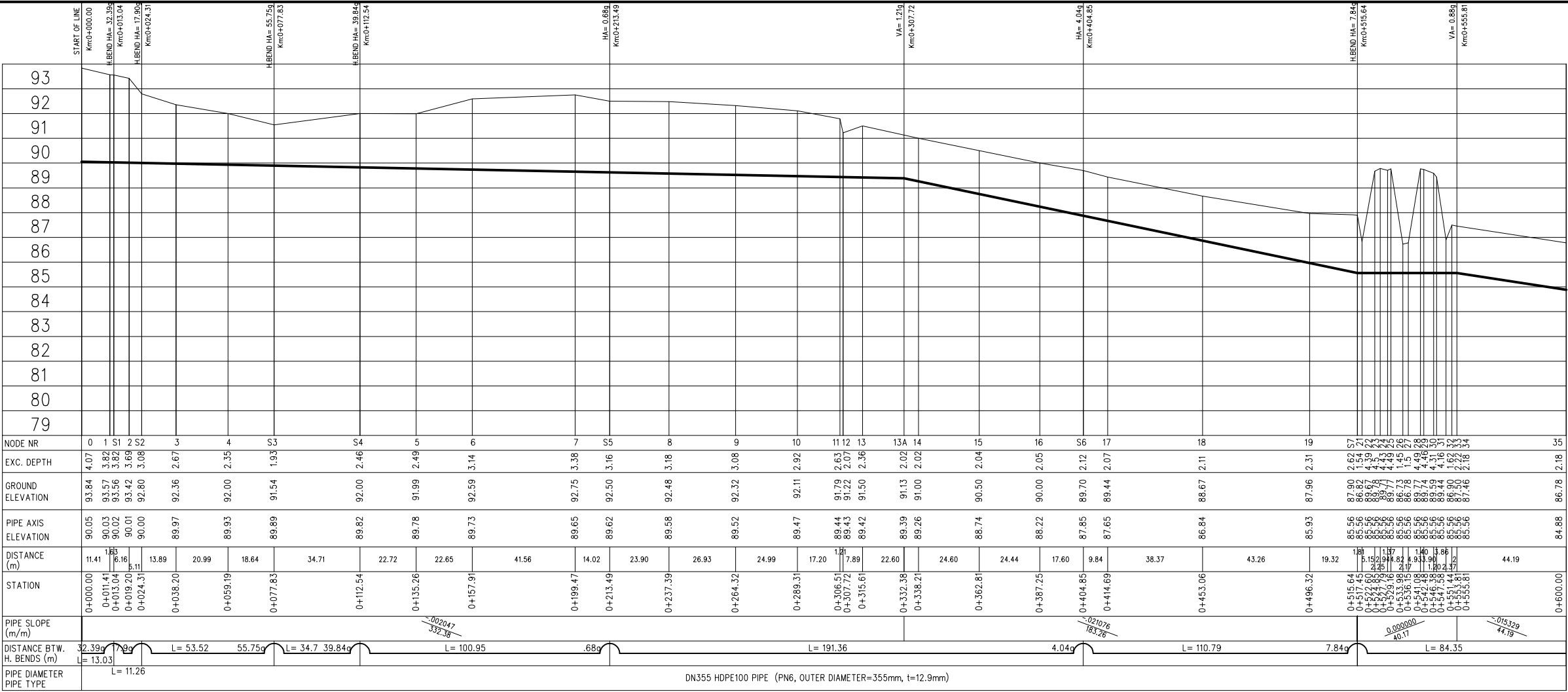
Site :
Khacmaz

Facility :
Plan & Profile of TL from Point "A" to Zone I Service Reservoir

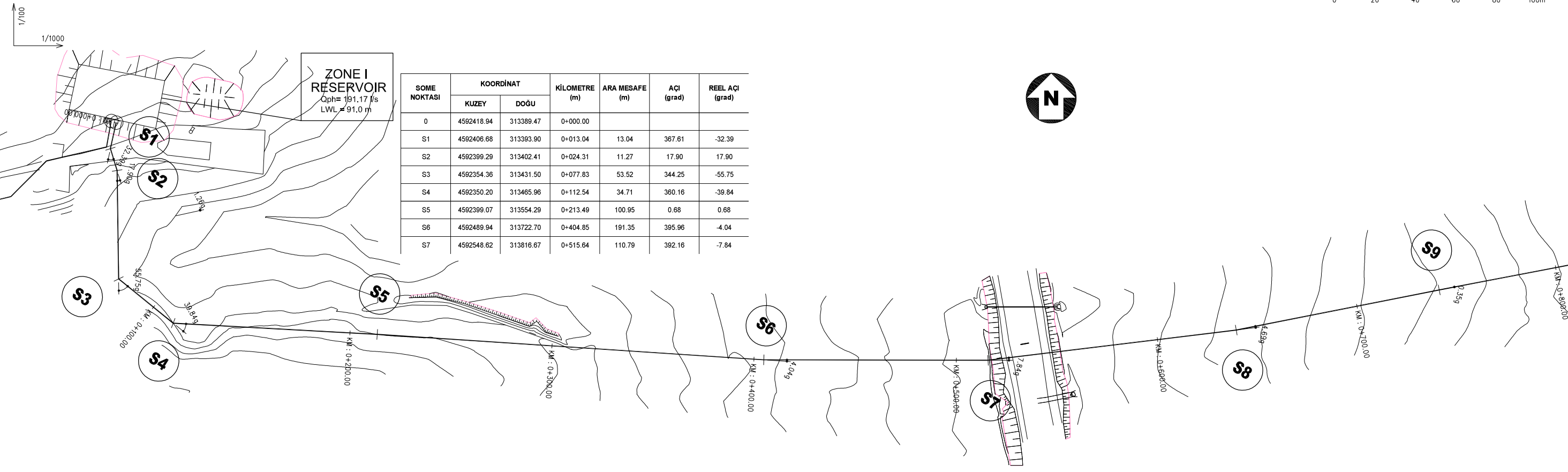
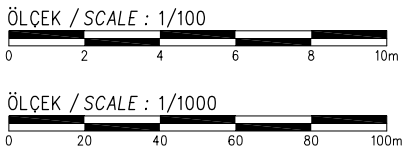
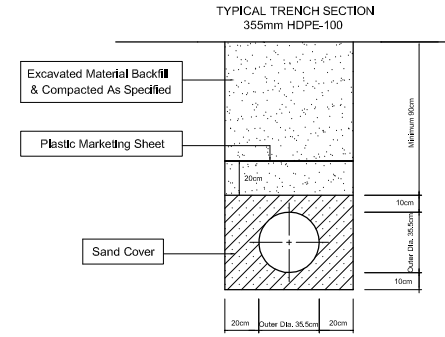
Title :
Between
KM: 0+000.00 - 0+397.53

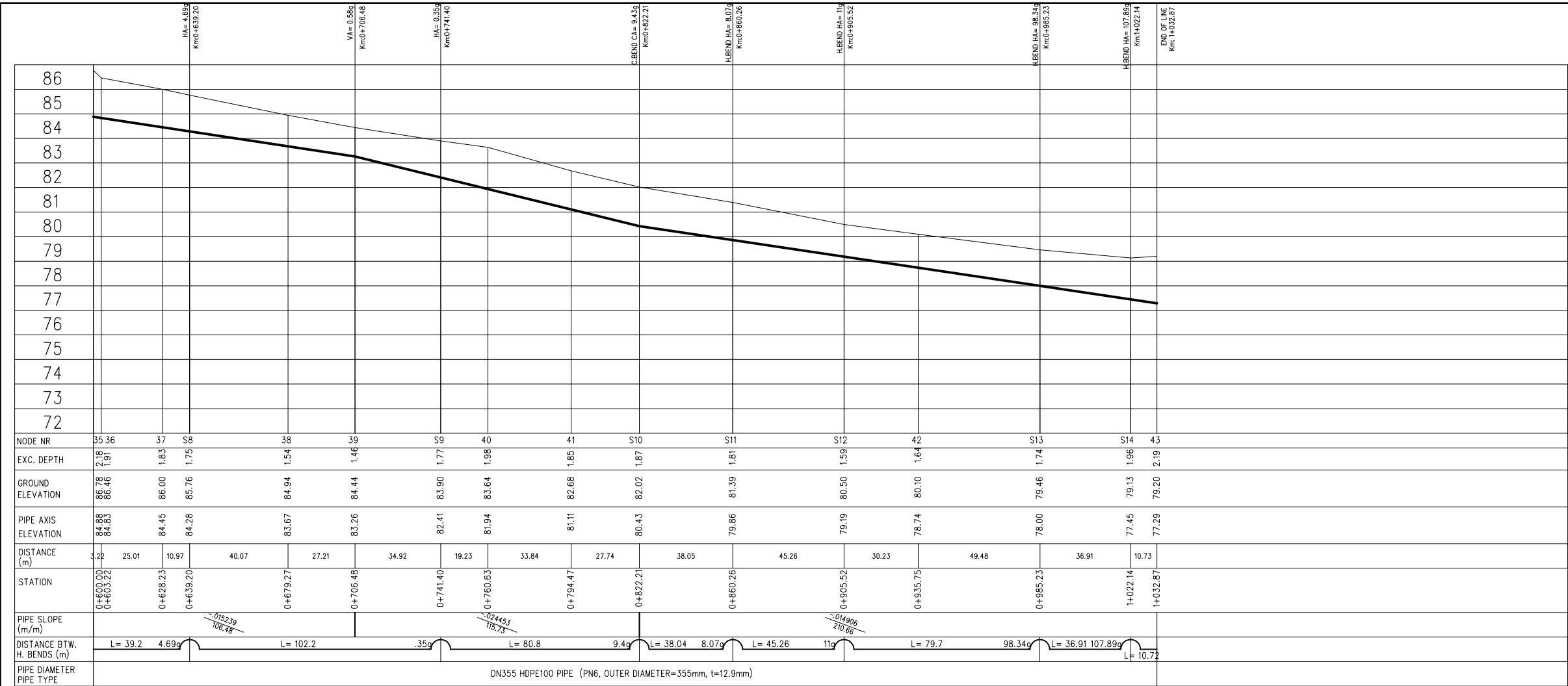
Scale of
Drawing :
1/1000
Original Size of
Paper :
A1

Category - City
SU-XAC
Date
March 2010
Facility Code -
Number
09-04(01)
Revision Number
Rev.0

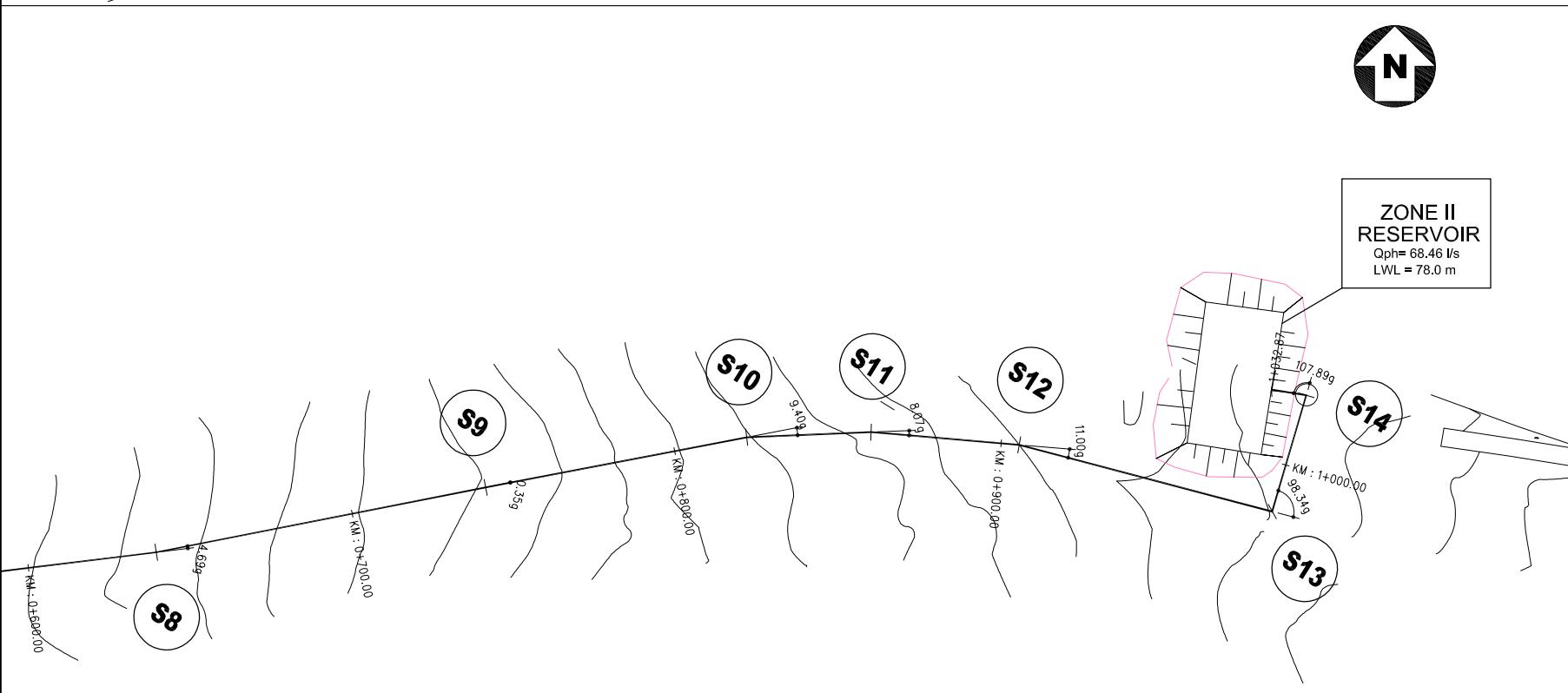
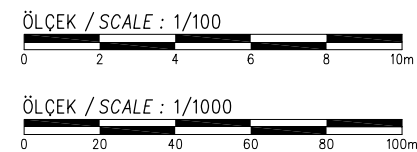
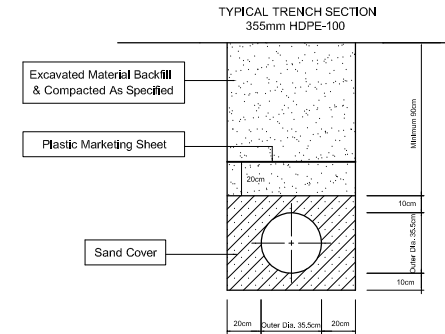


- LEGEND
- AIR VALVE
 - WASHOUT VALVE
 - LINE VALVE
 - V. BEND = VERTICAL BEND
 - H. BEND = HORIZONTAL BEND
 - C. BEND = COMBINED BEND
 - VA = VERTICAL ANGLE (in grad)
 - HA = HORIZONTAL ANGLE (in grad)
 - CA = COMBINED ANGLE (in grad)
 - AV = AIR VALVE
 - WV = WASHOUT VALVE
 - LV = LINE VALVE





- LEGEND
- AIR VALVE
 - WASHOUT VALVE
 - LINE VALVE
 - V. BEND = VERTICAL BEND
 - H. BEND = HORIZONTAL BEND
 - C. BEND = COMBINED BEND
 - VA = VERTICAL ANGLE (in grad)
 - HA = HORIZONTAL ANGLE (in grad)
 - CA = COMBINED ANGLE (in grad)
 - AV = AIR VALVE
 - WV = WASHOUT VALVE
 - LV = LINE VALVE



SOME NOKTASI	KOORDİNAT		KİLOMETRE (m)	ARA MESAFE (m)	AÇI (grad)	REEL AÇI (grad)
	KUZEY	DOĞU				
S8	4592626.46	313912.63	0+639.20	123.56	395.31	-4.69
S9	4592696.50	313987.05	0+741.40	102.20	0.35	0.35
S10	4592751.66	314046.30	0+822.34	80.94	9.40	9.40
S11	4592773.11	314077.53	0+860.24	37.90	8.07	8.07
S12	4592793.83	314117.80	0+905.51	45.28	11.00	11.00
S13	4592817.56	314193.89	0+985.22	79.71	301.86	-98.34
S14	4592853.07	314183.82	1+022.13	36.90	292.11	-107.89
43	4592848.88	314173.93	1+032.87	10.74		

SPECIAL ASSISTANCE FOR PROJECT IMPLEMENTATION (SAPI) FOR THE PROVINCIAL CITIES WATER SUPPLY AND SEWERAGE PROJECT IN THE REPUBLIC OF AZERBAIJAN	AZERSU JOINT STOCK COMPANY, the Republic of Azerbaijan Japan International Cooperation Agency (JICA), Japan	Site : Khacmaz	Facility : Plan & Profile of TL From Zone I Service Reservoir to Zone II Service Reservoir	Title : Between KM: 0+600.00 - 1+032.87	Scale of Drawing : 1/1000 Original Size of Paper : A1	Category - City SU-XAC	Facility Code - Number 09-05(02)
						Date March 2010	Revision Number Rev.0