

## 付 属 資 料

1. 調査日程表
2. 主要面談者
3. ミニッツ（評価レポートを含む）
4. 評価グリッド
5. カウンターパート向け質問票回答集計
6. 民間養殖業者向け質問票回答集計
7. PDM 3 和訳版とトルコ語版
8. PDM 2 和訳版と英語版
9. PO（和訳版）



## 調査日程

< 一次調査 >

March 2 <sup>nd</sup> (Sun)	From Japan to Laos
3 <sup>rd</sup> (Mon)	JICA
	PSO
	DOP
	JICA Expert of Agricultural Policy
4 <sup>th</sup> (Tue)	DOA
	DOLF
	JICA Expert of Agricultural Policy
5 <sup>th</sup> (Wed)	NAFES
	JICA Experts of RISEP
	NAFRI
	FORCOM Project Office Visit
6 <sup>th</sup> (Thu)	Dept of Inspection
	DOI
	JICA Expert of Irrigation Development Policy Advisor
	JICA Expert of AgriSTAT
	JICA Experts of AQIP2
7 <sup>th</sup> (Fri)	Dept of Organization and Personnel
	DOF
	JICA Expert of FSIP
	JICA
8 <sup>th</sup> (Sat)	Report making
9 <sup>th</sup> (Sun)	Move to LPB
10 <sup>th</sup> (Mon)	LPB PAFO
	DAFO
	Move to Xayaboury
11 <sup>th</sup> (Tue)	PAFO Xayaboury
	DAFO Xayaboury
	TSC in Xayaboury District
	Village Visit of AQIP2
12 <sup>th</sup> (Wed)	DAFO, Phieng District
	TSC, Phieng District
	Village

	Move to LPB
13 <sup>th</sup> (Thu)	JICA Expert of FORCOM
	FORCOM
	Move to VTE
14 <sup>th</sup> (Fri)	DOP
	WB
	JICA Expert of Irrigation Development Policy Advisor
	Additional information collection from JICA Experts of RISEP
	FAO
	AFD
15 <sup>th</sup> -16 <sup>th</sup>	Report making
17 <sup>th</sup> (Mon)	Additional information collecting, Report making
18 <sup>th</sup> (Tue)	TV conference with JICA headquarter
19 <sup>th</sup> (Wed)	FAO
20 <sup>th</sup> (Thu)	Internal Workshop
21 <sup>st</sup> (Fri)	Report to Embassy of Japan
	Report to JICA
	Leave Laos
22 <sup>nd</sup> (Sat)	Arrive in Japan

< 二次調査 >

June 16 <sup>th</sup> (Mon)	Department of Planning (DoP), MAF Planning Division Investment Division
	Department of Agriculture (DoA), MAF Technical Division
	Ministry of Industry and Commerce SMEPDO
17th (Tue)	NAFES, MAF
	Department of Planning Rural Development Division
	NAFRI, MAF Policy Research Center <Agricultural Cooperative, Farmer group> SALT (Sloping Agriculture Land Technology) Office
	Forest Strategy Implementation Project (FSIP)
18th (Web)	Faculty of Agriculture, National University of Laos
	Department of Domestic and Foreign Investment Investment Promotion Division
	Chamber of Commerce and Industry Lao Agricultural Production Company
	Agriculture Promotion Bank
19th (Thu)	PAFO, Vientiane City PROFIL Office Micro finance Center
	ADB (Agriculture and Natural Resources Sector Needs Assessment) NAYOBY BANK World Bank
	20th (Fri)
21st (Sat)	Report making
22nd (Sun)	Report making
23rd (Mon)	Internal Meeting Meeting at JICA Laos Office
	Embassy of Japan Meeting with JICA experts (AGRISTAT, RISEP and M&H)
24th (Tue)	Discussion for priority issues with senior officer of DoP Meeting with JICA experts (AQIP2 and FORCOM) PROSA (Programme Sectoriel en Agroecology) Office

	Irrigation Policy Advisor
25th (Web)	Workshop for making strategy for agriculture and rural development
	EC (Livestock Farmer Support Project)
26th (Thu)	Summarization of the result of workshop
	Report making Meeting at JICA Lao Office
27th (Fri)	Internal meeting on the strategy for agriculture and rural development Report to EoJ

## 主要面談者リスト

< 一次調査 >

1. MAF : Ministry of Agriculture and Forestry	
DOP : Department of Panning	
Mr. Xaypladeth CHOULAMANY	Deputy Director General
Mr. Inthadom AKKAHARATH	Deputy Director
PSO : Permanent Secretary Office	
Mr. Khamphanh MEUANSITTHIDA	Deputy Director General
DOA : Department of Agriculture	
Mr. Saloumsy PHITHATAPHONE	Deputy Director of Planning Division
Ms. Khampoui LOUANGLATH	Director of Regulatory Division
DOLF : Department of Livestock and Fisheries	
Mr. Chanthaboun SIRIMANOTHAM	Director of Planning Division
NAFES: National Agriculture & Forestry Extension Service	
Mr. Somxay SISANONH	Deputy Director General
NAFRI : National Agriculture & Forestry Research Institute	
Mr. Phouthone SOPHATHILATH	Deputy Director of Planning and Cooperation Division
DOIS : Department of Inspection	
Mr. Peung INGXAY	Director General
DOI : Department of Irrigation	
Mr. Thanousay OUNTHOUANG	Deputy Director General
Mr. Khamhou PHANTAVONG	Deputy Director of Planning Cooperation Division
Department of Organization and Personnel	
Mr. Bouhtavy SAYAPHETH	Head of HRD Division
DOF : Department of Forestry	
Mr. Oupakoe ALOUNSAVATH	Director for Planning Division
PAFO : Provincial Agriculture and Forestry Office	
Mr. Somphong PRADICHIT	Director General, Luang Prabang Province
Mr. Somchit CHANTHAVONG	Director General, Xayaboury Province
DAFO : District Agriculture and Forestry Office	
Mr. Ounhuane BAUTSADY	Deputy Director General, Luang Prabang District
Mr. Khamphanh KHAMPHOUBUA	Director, Pieng District

クラスターオフィス (Na Luam Cluster in Xayaboury District)	
Mr. Thoung One KHONGSP	Director
Mr. Bouchalang PHOHILAK	Agriculture and Extension staff
JICA 専門家	
農業政策アドバイザー	長岡明氏
稲種子増産・普及システム改善プロジェクト (RISEP)	片山克己氏
	清治 有氏
森林管理・住民支援プロジェクト (FORCOM)	石川みゆき氏
	宮崎香氏
	名村隆行氏
灌漑開発政策アドバイザー	渡邊和真氏
農業総計能力強化プロジェクト	上倉健司氏
養殖改善・普及計画フェーズ 2 (AQIP)	池之上宏氏
	枝浩樹氏
森林戦略実施促進計画 (FSIP)	北村徳喜氏
他ドナー	
FAO	Ms. Lynn HARNEDY, Associate Policy & Programme Officer
	Ms. Rebecca Host-Madsen, Food Security & Agricultural Development Officer
AFD	Mr. Zacharie MECHALI, Rural Sector
ADB	Mr. Christopher T. HHANGUIE, Country Economist, Lao PDR Resident Mission,
	Ms. Sisavanh PHANOUVONG, Project Implementation Officer (Environment and Natural Resources) Lao PDR Resident Mission

< 二次調査 >

氏名	所属機関・職位
Mr. Savanh Hanephom	Deputy Director General, Department of Planning, MAF
Mr. Oukham Phiathep	Deputy Director of Planning Division, Dept. of Planning, MAF
Dr. Ketkeo Phouangphet	Director of Investment Division, Dept. of Planning, MAF
Ms. Inthanongsith	Director of Agronomy Management Division, Dept. of Agriculture, MAF



Kommameuang	
Mr. Somxay Sisanonh	Director General of NAFES, MAF
Mr. Soudchay Nhouyvanisvong	Deputy Director, Rural Development Coordination Division, Department of Planning, MAF
Dr. Linkham Couangsavanh	Director, Agriculture and Forestry Policy Research Center (PRC) , NAFRI, MAF
Dr. Somboune Sayavong	Deputy Director, Agriculture and Forestry Policy Research Center (PRC) , NAFRI, MAF
Mr. Oloth Sengtaheuanghong	Deputy Director of Agriculture Land Research Center (ALRC) , NAFRI, MAF
Mr. Chantha Thipphavongphanh	Deputy Director, Agriculture and Forestry Office, Vientiane Capital
Mr. Vilaysak Souphanthong	Chief of Agriculture and Forestry Extension Service Division, Agriculture and Forestry Office, Vientiane Capital
Mr. Sayasith Khamphasith	Director of Productivity Division, SME Promotion and Development Office, Ministry of Industry and Commerce (MIC)
Mr. Phonethavong Singhalath	Director, Investment Promotion Division, Investment Promotion Department (IPD) , Ministry of Planning and Investment (MPI)
Dr. Sitha Khemmarath	Assoc.Prof.. Vice-Dean for Academic Affairs, Faculty of Agriculture, National University of Laos
Mr. Souklaty Sysaneth	Deputy Head of Academic Affair Division, Faculty of Agriculture, National University of Laos
Mr. Houmpheng Manixay	Director, NAYOBY BANK
Mr. Kongxy Thongphouvong	Head of Planning & International Relations Division, Agriculture Promotion Bank
Dr. Sisaliao Svengsuksa	Co-President of Lao Farmers' Products, Co-President of Batieng Product Laos, Advisor of Lao Agriculture Products Processing Group, Lao National Chamber of Commerce and Industry
Mr. Somphone Sisenglath	Director of Microfinance Center, Microfinance Specialist
Mr. Kevin Rutter	Project Economist, Agriculture and Natural Resources Sector Needs Assessment, ADB
Mr. Ulrich Schmitt	Natural Resources Economist, Rural Development & Natural Resources, East Asia and Pacific Region, World Bank
Mr. Mel Jones	Attache Cooperation, European Union
Mr. Andrew Wilson	Marketing Advisor, PROFIL (Promotion of Organic Farming and Marketing Project)
Mr. Khamxay Sipaseuth	Co-Manager, PROFIL (Promotion of Organic Farming and Marketing Project)
Mr. Thangchanh Bounthala	Coordinator of PROSA
長岡 明 専門家	農林省農業政策アドバイザー
北村 徳喜 専門家	森林戦略実施促進計画 (FSIP)

上倉 健司 専門家	農業統計能力強化計画 (Agri STAT)
片山 克己 専門家	稲種子増産・普及システム改善計画 (RISEP)
清治 有 専門家	稲種子増産・普及システム改善計画 (RISEP)
飽津 博史 専門家	気象水文業務改善計画
枝 浩樹 専門家	養殖改善・普及計画 (フェーズ2) (AQIP2)
石川みゆき 専門家	森林管理・住民支援計画 (FORCOM)
渡邊 和眞 専門家	灌漑開発政策アドバイザー
宮下 正明 大使	日本大使館
目徳 有二 書記官	日本大使館
高島 宏明 所長	JICA ラオス事務所
武井 耕一 次長	JICA ラオス事務所
波多野 誠 所員	JICA ラオス事務所
小谷 匡 所員	JICA ラオス事務所

## 参考資料・収集資料

< 1 次調査 >

< ADB >

Country Operation Business Plan Lao People's Democratic Republic 2008-2010  
August 2007, ADB (<http://www.adb.org/Documents/CSPs/LAO/2007/COBP-LAO-2007.pdf>)

Lao People's Democratic Republic Country Strategy and Program 2007-2011, September  
2006, ADB (<http://www.adb.org/Documents/CSPs/LAO/2006/default.asp>,  
<http://www.adb.org/Documents/CSPs/LAO/2006/appendixes.pdf>)

“Lao People's Democratic Republic: Agriculture and Natural Resources Sector Needs  
Assessment” September 2006, ADB

“Lao People's Democratic Republic: Agriculture and Natural Resources Sector Needs  
Assessment Field Trip Report” October, 2007

< フランス政府 >

Framework Partnership Document France- Lao (2007-2011), French Ministry of Foreign  
Affairs  
([http://www.diplomatie.gouv.fr/en/country-files\\_156/laos\\_491/france-and-laos\\_3120/frame  
work-partnership-document-france-lao-2007-2011\\_9106.html](http://www.diplomatie.gouv.fr/en/country-files_156/laos_491/france-and-laos_3120/framework-partnership-document-france-lao-2007-2011_9106.html))

< 世界銀行 >

“Lao PDR: Rural and Agriculture Sector Issues Paper” The World bank, May 2006  
([http://www-wds.worldbank.org/external/default/WDSContentServer/WDSP/IB/2006/10/04/  
000090341\\_20061004111902/Rendered/PDF/375660LAORural1ctor0Issues01PUBLIC1.pdf](http://www-wds.worldbank.org/external/default/WDSContentServer/WDSP/IB/2006/10/04/000090341_20061004111902/Rendered/PDF/375660LAORural1ctor0Issues01PUBLIC1.pdf))

“Poverty Assessment Report”, September 2006  
([http://www-wds.worldbank.org/external/default/main?pagePK=64193027&piPK=64187937  
&theSitePK=523679&menuPK=64187510&searchMenuPK=64187283&theSitePK=523679&  
entityID=000020439\\_20070626090246&searchMenuPK=64187283&theSitePK=523679](http://www-wds.worldbank.org/external/default/main?pagePK=64193027&piPK=64187937&theSitePK=523679&menuPK=64187510&searchMenuPK=64187283&theSitePK=523679&entityID=000020439_20070626090246&searchMenuPK=64187283&theSitePK=523679))

< FAO >

Country Brief “The Lao People's Democratic Republic” FAO, March 2007 (社内保有資料)  
October 2007

National Medium-Term Priority Framework in Lao PDR 2007-2011 (ドラフトコピー、FAO)

ラオス事務所より)

<MAF>

1. クラスタオフィスリスト (ラオス語コピー。ルアンパバン県は FORCOM 専門家より、サヤブリ県は PAFO より。)
2. Establishment of Agriculture and Forestry Technical Service Centre(JICA ラオス事務所より)
3. Donor activity list(NAFES, DOP)
4. Forestry Strategy to the Year 2020 of the LAO PDR(コピー、FSIP 専門家より入手)
5. (DRAFT) NAFRI Strategic Plan for 2007-2012 & Research Agenda for 2007 -2010 ver.3(ドラフトコピー、NAFRI より入手)
6. Draft Strategic Plan on Livestock Development in LAO PDR until 2020 (ドラフトコピー、DOLF より入手、ラオス語)
7. Draft Strategic Plan for fisheries from the present to 2020 Action Plan for 2006 to 2010 (ドラフトコピー、DOLF より入手)
8. The Fifth Implementation of Five-year Plan (2006-2010) and The Sixth Direction of Agriculture and Forestry Development Plan (コピー、JICA 事務所より)
9. National Socio Economic Development Plan (コピー、長岡専門家より入手)
10. Brief Summary of Achievement from the Implementation of Annual Action Plan 2006 -2007 and the Annual Plan 2007-2008 of the Agriculture and Forestry Sector (コピー、ラウンドテーブル会議での資料、農業政策アドバイザーより入手)

<プロジェクト、専門家活動関連資料>

Outline of Community Support Programme (CSP) January 2008 (簡易製本、FORCOM 専門家より入手)

Concept note for Agricultural Project (LEAP) Phase III (ドラフトコピー、FORCOM 専門家より入手)

<統計資料>

1. Agricultural Statistics 1976-2005, 2006, MAF (コピー、農業政策アドバイザーより入手)
2. Agricultural Statistics Year Book, Vientiane Capital, Department of Planning, May 2006, (農業政策アドバイザーより入手)
3. The Household of LAO PDR Social and economic indicators Lao Expenditure and Consumption Survey (LECS III), 2002/2003, March 2004, CPC, NSC (オリジナル)
4. Statistical Year Book 1975-2005, CPI, NSC, July 2005 (オリジナル)
5. Statistical Year Book 2006, CPI, NSC, June 2007 (オリジナル)

<個別イシュー>

## 1. 農業

国際林業協力 Vol. 29. No.2 「ラオス農林業の現状と課題」長岡明 pp.35-pp.43

## 2. 灌漑

“Irrigation Development in LAO PDR”, “WUA establishment Process”-パワーポイント資料他、(コピー、灌漑開発政策アドバイザーより入手)

## 3. 森林

北村徳喜[2008]「第4章ラオス森林セクターの現状と課題」鈴木基義・山田紀(編著)[2008]『内陸国ラオスの現状と課題』JICA ラオス事務所・ラオス日本人材開発センター。pp. 115～142.

“Selected NTFPs for development in Phokoum, Xieng Nguen, Ngoi and Pakxeng, Luang Prabang”, SNV, 2007

## 4. 畜水産

“Livestock Sector Brief” , FAO, March 2005

“FAO Fisheries Country Profile”, FAO, November, 2006

## 5. 貿易投資

“Impact of Manufactured Exports on Human Development in the LAO PDR”, UNDP, 2006

[http://www.nsc.gov.la/Products/NHDR%202006/Technical%20Background%20Papers%20in%20English/Manufactured\\_NHDR.pdf](http://www.nsc.gov.la/Products/NHDR%202006/Technical%20Background%20Papers%20in%20English/Manufactured_NHDR.pdf)

“Fighting Asia's postharvest problems”  
(<http://www.irri.org/irrc/outreach/Fighting%20Asia.asp>)

## 6. 農産加工、契約栽培等

“Contract Farming in Lao PDR: Cases and Questions”, LEAP, October 2007 (コピー、農業政策アドバイザーより入手)

“Promote Soybean as Cash Crop: Determinants and Possible Impacts”, Lao-Swedish Agriculture and Forestry Research Programme, September 2005

「ラオス農産物加工ビジネスの可能性」、JBIC、2007年9月

“Final Report for Preliminary Study on Food and Feed Processing Industry in Lao PDR”(CD、農業政策アドバイザーより入手)

## 7. ジェンダー

“National Workshop For Gender Mainstreaming in Agriculture and Forestry on 13-14 February 2008”(長岡専門家より入手)

“Lao PDR Gender Profile”, Lao Women’s Union(LWU)/Gender Resource Information and

Development Center, November 2005

8. マイクロファイナンス

“Rural & Micro Finance Statistic in LAO PDR”, NERI, CPI, December 2007(オリジナル)

9. マクロ経済

“Economic Review”, NERI, CPI, December, 2007 (オリジナル)

10. ドナー協調

「ラオスにおける農業・農村開発セクターのドナー協調の取り組み」2006年、JICA  
ラオス事務所（パワーポイント資料）

< 2次調査 >

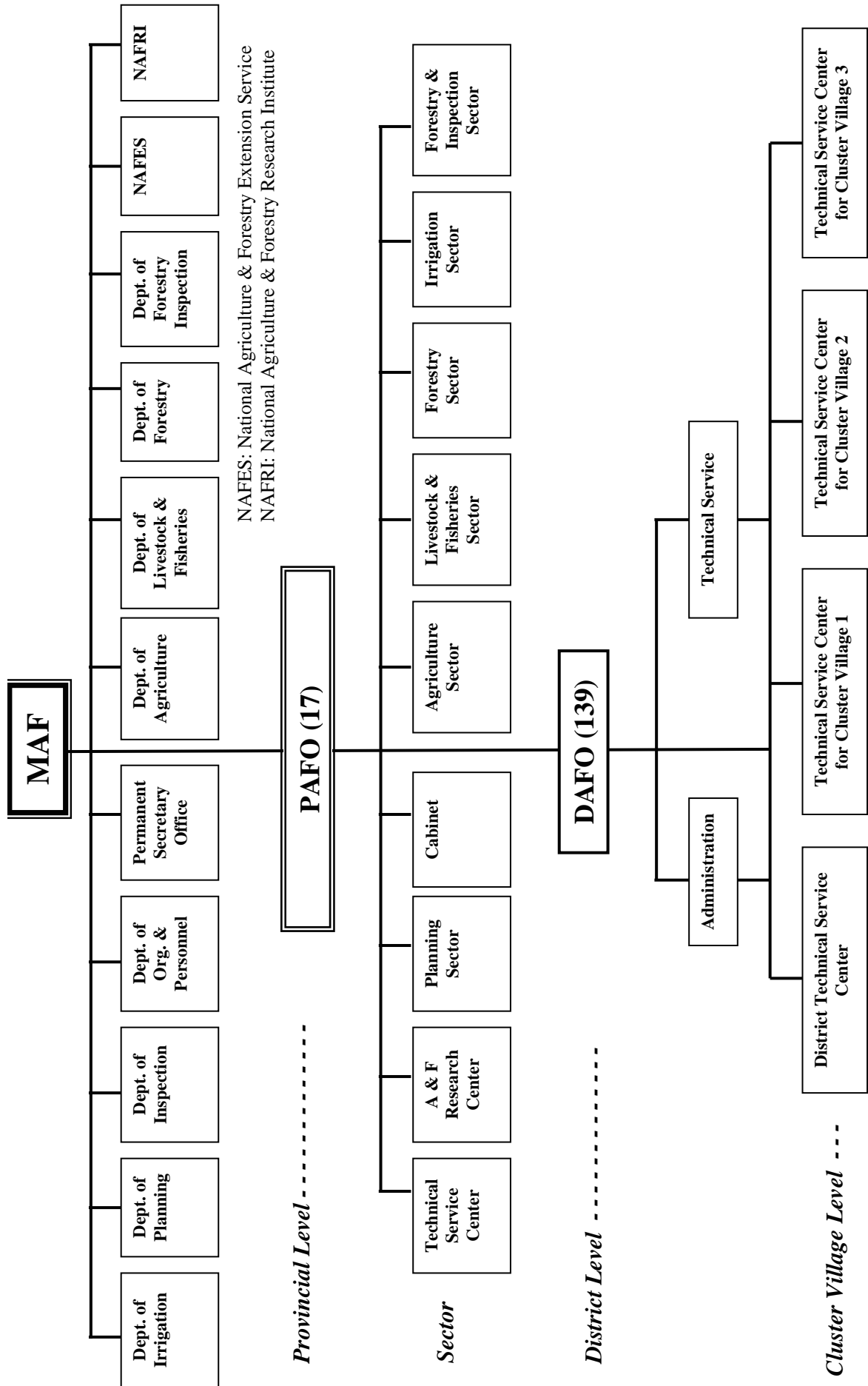
	Title	
1.	ラオス政府関係資料	ラオ語コピー
1)	Law on the Promotion of Foreign Investment in the Lao PDR, Second Edition, 2006	ラオ語＋英文、オリジナル冊子
2)	Decree on the Promotion and Development of Small and Medium Sized Enterprises, 2006	ラオ語＋英文、オリジナル冊子
3)	Approved Foreign Investment by Country 2000-2008 (January) by MPI	英文コピー
4)	Approved Foreign Investment by Sector 2000-2008 (January) by MPI	英文コピー
5)	Map of Conservation Forest, Production Forest, Watershed Protected Forest, and Survey Area of Companies in Savannakhet Province, by MAF	ラオ語コピー
6)	Summary of Domestic and Foreign Investment in Agriculture Sector by MAF	ラオ語コピー
7)	Pamphlet of NAYOBY BANK	ラオ語オリジナルおよび英訳版
8)	Pamphlet of Faculty of Agriculture (FOA), National University of Laos (NUOL) 2007-08	英文オリジナル
9)	Management of Soil Erosion Consortium (MSEC) Project in Laos, Field Guide, NAFRI, 07-Feb-2008	英文コピー
10)	Pamphlet of Agriculture and Forestry Policy Research Center, October 2007	英文コピー
11)	Ministerial Direction of the Minister of Agriculture and Forestry	英文コピー

	on “Establishing Agriculture and Forestry Technical Service Center” (un-official translation)	
12)	Guideline , Implementation of the Ministerial Decree on “the Establishment of the Agriculture-Forestry Technical Service Centers” (un-official translation)	英文コピー
13)	Establishment of Agriculture and Forestry Technical Service Center by NAFES	英文コピー
14)	Microfinance Capacity Building and Research Project (MCBR) <a href="http://www.microfinancelaopdr.org/en/index.cfm">http://www.microfinancelaopdr.org/en/index.cfm</a>	英文ウェブサイト情報
15)	Decision of the Minster of Agriculture and Forestry on Organic Agriculture Standards, 30 December 2005	英文（ソフトコピー）
2. 民間企業		
1)	Lao National Chamber of Commerce & Industry, 2008-09	英文コピー
2)	Microfinance Center < <a href="http://www.mfclao.com">http://www.mfclao.com</a> >	英文、ウェブサイト情報
3)	EMI (EKPHATTHANA Microfinance Institution) Company Profile	英文（ソフトコピー）
3. ドナー関連資料		
1)	International Development Association Country Assistance Strategy for the Lao PDR, March 10, 2005	英文コピー
2)	Lao PDR: Rural and Agriculture Sector Issues Paper, April 2006, by World Bank	英文（ソフトコピー）
3)	Lao PDR: Policy, Market and Agriculture Transition in the Northern Uplands, by World Bank, May 2008	英文（ソフトコピー）
4)	EU Livestock Project Outline	英文（ソフトコピー）
5)	Improving Soil Management and Smallholder Livelihood in Laos through Conservation Agriculture, Lao National Agro-Ecology Programme (PRONE), CIRAD/NAFRI	英文、パワーポイント資料（コピー）
6)	Programme Sectoriel en Agroecologie (PROSA), CIRAD/NAFRI	仏文、パワーポイント資料（コピー）
7)	PFOFIL Inception Workshop Presentation , 5 June 2008	英文、パワーポイント資料（ソフトコピー）
8)	Project Brief for the Proposed Agriculture Sector Capacity Enhancement Project in the Lao PDR (Draft, June 2008)	英文（ソフトコピー）
9)	United Nations Development Assistance Framework (UNDAF) Lao PDR, 2007-2011, June 2006	英文（ソフトコピー）

10)	ADB Country Operations Business Plan, Lao PDR 2008-2010, August 2007	英文 (ソフトコピー)
11)	Third Meeting of the Sub-Working Group for Upland Sustainable Development Program (SWGUp) 20 May 2008	英文 (コピー)
4. 専門家・プロジェクト関係資料		
1)	灌漑の現状と業務概要 (渡邊和眞専門家)	和文コピー
2)	灌漑サブセクター技術アドバイザー(TAISSS)インセプションレポートの概要	和文コピー
3)	養殖改善・普及計画 (フェーズ2) プロジェクト概要	和文コピー
4)	養殖改善・普及計画 (フェーズ2) (AQIP2)第4年次業務実施計画書 2008年4月	和文コピー
5)	First Step Proposal by AQIP2 toward Formulation of National Aquaculture Development Plan, June 2008	英文コピー
6)	Record of Discussions of the Brainstorming Session on Methodological issue of REDD (Draft)	英文コピー
7)	森林戦略実施促進プロジェクト(FSIP)の概要	和文コピー
8)	農業統計能力強化計画概要	和文コピー
9)	農業統計能力強化計画実施運営総括表 (2008年5月29日)	和文コピー
10)	森林管理・住民支援プロジェクト概要	和文コピー
11)	気象水文業務改善計画プロジェクト概要	和文コピー
12)	Concept of RISEP and Recent Activities, 23 June 2008	英文コピー
13)	Road Map of PLAN2020 (Summary Table) (Draft 20080520) for Rice Seed Project	英文コピー



# Organization Chart of the Ministry of Agriculture and Forestry (As of Oct. 2007)



ສັງລວມແຜນການລົງທຶນຂອງລັດ ສົກປີ 2006-2008 ຂອງກະຊວງກະສິກໍາ ແລະປ່າໄມ້ ຄັ້ງລົ້ມທີ 15/02/2008.

ລ/ດ	ສັງລວມ ບົດສະເໜີໂຄງການຂອງແຕ່ລະກົມ	ແຜນການລງທຸນ ສົກປີ 2005-2006				ແຜນການລງທຸນ ສົກປີ 2006-2007				ແຜນການລງທຸນ ສົກປີ 2007-2008			
		ຈຳນວນໄຄງການ	ທຸລະກິດ	ລວມ	Total	ຈຳນວນໄຄງການ	ທຸລະກິດ	ລວມ	Total	ຈຳນວນໄຄງການ	ທຸລະກິດ	ລວມ	Total
1	ຫ້ອງການກະຊວງ PSo	1	250	0	250	50.00	1	400	0	400	1	400.00	400.00
2	ກົມຈັດຕັ້ງ ແລະ ພະນັກງານ ກະຊວງກະສິກໍາ ແລະ ປ່າໄມ້	1	600	0	600	1	750	0	750	1	1,000.00	1,000.00	
3	ກົມແຜນການ	4	600	5,170	5,770	5	600	5,170	5,770	5	1,700.00	6,765.00	
4	ກົມກວດກາ	0	0	0	0	0	0	0	0	1	300.00	300.00	
5	ກົມຍຸກດັ່ງ	4	200	1,624	1,824	4	700	1,624	2,324	11	1,250.00	4,116.20	
6	ກົມລົງສັດ ແລະ ການປະມົງ	6	850	15,000	15,850	6	2,200	15,000	17,200	11	1,100.00	18,290.40	
7	ກົມຊຸມລະບະທານ	3	400	84,780	85,180	4	5,550	88,428	93,978	6	500.00	46,914.00	
8	ກົມປ່າໄມ້	4	250	6,390	6,640	4	250	6,390	6,640	1	7,308.77	7,308.77	
9	ກົມອຸຕຸ ແລະ ອຸທິກະສາດ	5	200	5,540	5,740	5	350	5,540	5,890	6	550.00	14,540.00	
10	ສະຖາບັນຄົ້ນຄວ້າທິດສະດີ ກະສິກໍາ ແລະ ປ່າໄມ້	5	200	26,166	26,366	7	350	55,333	55,683	8	400.00	32,790.00	
11	ກອງກຳລັງເສີມກະສິກໍາ ແລະ ປ່າໄມ້	6	100	13,233	13,333	6	100	18,233	18,333	7	400.00	18,233.00	
12	ກອງທຶນພັດທະນາປ່າໄມ້	1	10,000	0	10,000	7	10,000	0	10,000	11	12,000.00	12,000.00	

ສະແດງ: PFI ກະຊວງກະສິກໍາ ແລະ ປ່າໄມ້ (Prime Minister)

出所) 計画局 (DOP) より入手

ສັງລວມແຜນການລົງຂອງລັດ ແຕ່ສົກປີ 2006-2008 ຂອງຂະແໜງການ ກຳ ທົ່ວປະເທດ.

ຫົວໜ່ວຍລັດຖະການ  
ຄູ ກຳ ທົ່ວ

添付資料 6 地域ごとの予算配分(2005～2008 年)

付属資料 6 地域ごとの予算配分 (2005 ～ 2008 年)

ລ/ດ	ຊື່ ແລະ ທີ່ຕັ້ງຂອງແຂວງ	ແຜນການລ່າງທຳມະດາ			ແຜນການລ່າງທຳມະດາ			ແຜນການລ່າງທຳມະດາ		
		ສົກປີ 2005-2006			ສົກປີ 2006-2007			ສົກປີ 2007-2008		
		ພັນ	ຕຳແໜ່ງ	ລວມ	ພັນ	ຕຳແໜ່ງ	ລວມ	ພັນ	ຕຳແໜ່ງ	ລວມ
I	ຂະແໜງພູມສາດ	9,735.00	25,545.00	33,644.00	17,382.56	23,914.22	41,301.45	25,618.64	19,963.32	375,581.96
1	ແຂວງ ຜົງສາລີ Phongsaly	940.00	500.00	1,404.00	3,993.33	0.00	3,993.00	1,527.96	0.00	331,527.96
2	ແຂວງ ຫຼວງນໍ້າທາ Luang Nam Tho	416.00	686.00	1,102.00	534.00	0.00	534.00	1,677.50	0.00	1,677.50
3	ແຂວງ ອຸດົມໄຊ Oudomxay	2,451.00	1,110.00	3,561.00	3,704.00	1,500.00	5,200.00	8,604.32	11,595.32	20,199.64
4	ແຂວງ ບໍ່ແກ້ວ Bokeo	1,644.00	800.00	844.00	975.00	0.00	975.00	580.00	0.00	580.00
5	ແຂວງ ຫຼວງພະບາງ Luang Phabang	172.00	0.00	172.00	1,125.23	2,343.22	3,468.45	6,123.86	0.00	6,123.86
6	ແຂວງ ໄຊຍະບູລີ Xayaboury	1,640.00	5,184.00	6,824.00	2,759.00	1,087.00	3,846.00	3,055.00	2,875.00	5,930.00
7	ແຂວງ ຫົວພັນ Houaphanh	690.00	10,812.00	11,502.00	2,552.00	14,000.00	16,552.00	1,210.00	500.00	1,710.00
8	ແຂວງ ຊຽງຂວາງ Xiengkhouang	1,782.00	6,453.00	8,235.00	1,740.00	4,984.00	6,733.00	2,840.00	4,993.00	7,833.00
II	ຂະແໜງການກາງ	11,066.00	172,449.00	186,514.00	16,055.97	29,029.52	34,527.49	20,294.69	29,786.62	50,081.31
9	ນະຄອນຫຼວງວຽງຈັນ Vientiane (cap.)	2,639.00	33,691.00	36,330.00	4,932.27	4,053.00	2,261.27	8,633.51	691.00	9,324.51
10	ແຂວງ ວຽງຈັນ Vientiane Pr.	3,955.00	9,864.00	16,818.00	7,021.74	12,620.52	20,957.26	7,062.86	10,009.62	17,072.48
11	ແຂວງ ບໍລິຄຳໄຊ Bolikhamxay	786.00	82,867.00	83,653.00	1,132.50	6,536.00	7,668.50	1,036.00	0.00	1,036.00
12	ແຂວງ ຄຳມ່ວນ Khammouane	2,111.00	26,415.00	28,526.00	2,137.00	5,820.00	2,957.00	1,080.40	5,150.00	6,230.40
13	ແຂວງ ສະຫວັນນະເຂດ Savan.	1,575.00	19,612.00	21,187.00	832.46	0.00	683.46	2,481.92	13,936.00	16,417.92
III	ຂະແໜງກາງ	4,222.00	35,719.00	485,514.00	4,057.00	40,037.00	44,094.00	4,834.13	42,825.35	47,659.48
15	ແຂວງ ຈຳປາສັກ Champasak	1,997.00	21,022.00	468,592.00	795.00	33,172.00	33,967.00	1,973.41	30,890.35	32,863.76
16	ແຂວງ ສາລະວັນ Savanakh.	1,215.00	6,000.00	7,215.00	1,753.00	500.00	2,253.00	1,523.00	0.00	1,523.00
17	ແຂວງ ເຊກອງ Sekong	755.00	0.00	755.00	90.00	2,836.00	2,926.00	367.72	0.00	367.72
18	ແຂວງ ອັດຕະປື Attapeu	255.00	8,697.00	8,952.00	1,419.00	3,529.00	4,948.00	970.00	11,935.00	12,905.00
	ລວມ Total	25,023.00	233,713.00	705,672.00	37,495.53	92,980.74	119,922.94	50,747.46	92,575.29	473,322.75

出所) 計画局 (DOP) より入手