

original data table Measurement of Water Table inside Pressure Relief Holes In Gallery

Block	Pressure relief hole		Depth below the collar (m)							
	Holes	Hole level El	29/5/6	15.06.06	30.06.06	17.07.06	31.07.06	15.08.06	31.08.06	18.09.06
	No	El (m)								
	U/S W.L		199.8	199.66	199.66	201.61	204.48	206.04	208.9	210.08
	D/S W.L		167.5	167.5	167.5	167.5	167.6	167.6	167.8	166.8
7	7-1	187	3.7	3.82	4.1	3.66	3.17	3	2.52	2.42
	7-2	187	4.32	4.36	4.74	4.2	3.6	3.32	2.8	2.69
	7-3	187	4.44	4.58	5	4.4	3.8	3.53	2.92	2.8
8	8-1	187	4.44	4.66	5	4.4	3.17	3.02	2.92	2.8
	8-2	187	4.44	4.54	5	4.4	3.74	3.53	2.92	2.8
	8-3	187	4.74	4.7	5.15	4.56	3.84	3.66	3.05	2.93
	8-4	187	4.74	4.7	5.17	4.57	3.88	3.7	3.06	2.95
	8-5	187	5.2	5.17	5.63	4.93	4.16	3.8	3.1	2.9
	8-6	187	5.2	5.14	5.61	4.91	4.1	3.74	3.05	2.87
	8-7	187	5.16	5.14	5.61	4.91	4.1	3.77	3.06	2.85
9	9-1	187	9.6	9.5	10	9.4	8.62	8.2	7.72	7.73
	9-2	187	8.6	8.46	8.7	8.1	7.42	7.1	6.55	6.5
	9-3	187	9.92	9.87	10.26	9.6	9.1	8.63	7.96	8.1
	9-4	185.25	5.6	5.57	5.98	5.2	4.36	3.94	3.26	3.1
	9-5	185.25	4.85	4.78	5.28	4.43	3.5	3.1	2.3	2.3
	9-6	181	2.6	2.53	2.98	2.2	1.23	0.83	0	0
	9-7	179.5	4.25	1.41	4.5	3.9	3.2	2.95	1.3	2.4
	9-8	179.5	4.4	4.4	4.4	4.38	3.52	3.38	2.37	2.8
10	10-1	179.5	5.59	5.47	5.9	5.33	4.6	4.55	3.78	4.1
	10-2	179.5	5.92	5.9	6.23	5.7	5.1	5	4.5	4.7
	10-3	179.5	6.73	6.62	6.92	6.55	6.06	5.95	5.44	5.18
	10-4	179.5	6.83	6.77	7.6	6.7	6.1	6	5.45	5.66
	10-5	179.5	6.87	6.77	7.1	6.78	6.13	6	5.45	5.67
	10-6	179.5	10.6	10.42	10.8	10.56	10.17	10.1	9.93	10
	10-7	179.5	12.64	12.47	12.81	12.62	12.33	12.2	10.76	12.24
	10-8	179.5	0.6	0.6	0.6	0.6	0.6	0.6	0.6	12.43
11	11-1	179.5	12.82	12.1	13.15	12.83	12.43	12.33	10.62	11
	11-2	178.5	11.42	11.24	11.8	11.47	11.1	10.9	10.42	10
	11-3	176.75	10.4	10.19	10.67	10.4	10	9.86	8.32	6.65
	11-4	175	7.3	7.5	7.7	7.76	6.83	6.63	6.03	6
	11-5	175	6	6	6	6	6	6	8.05	8.92
	11-6	175	9.15	8.86	9.5	9.18	8.8	8.63	5	5
	11-7	175	5	5	5	5	5	5	0.77	0.79
	11-8	175	0.76	0.76	0.77	0.77	0.76	0.77	8.14	0.7
12	12-1	175	9.25	9	9.61	9.31	8.87	8.8	7.52	9
	12-2	175	7.52	7.52	7.52	7.52	7.52	7.52	5.48	7.52
	12-3	175	5.48	5.48	5.48	5.48	5.48	5.48	8.18	5.48
	12-4	175	9.3	9.1	9.76	9.4	9	8.9	8.43	9.15
	12-5	175	9.45	9.2	9.86	9.45	9.14	9	8.48	9.32
	12-6	175	9.5	9.1	9.93	9.6	9.23	9.1	5	9.4
	12-7	175	5	5	5	5	5	5	5	5
	12-8	175	2	2	2	2	2	2	5.2	2
13	13-1	175	0.6	0.6	0.6	0.6	0.6	0.6	6	0.6
	13-2	175	9.41	9.26	9.93	9.53	9.1	9	8.37	9.3
	13-3	174	8.4	8.22	8.9	8.5	8.1	8	7.34	8.26
	13-4	172	6.5	6.3	9.93	6.56	6.14	6.1	5.43	6.42
	13-5	170	4.82	4.62	5.28	4.92	4.57	4.45	3.91	4.7
	13-6	163	2.82	2.63	3.2	2.93	2.6	2.45	1.92	2.77
	13-7	166.25	1.2	1	1.64	1.3	2	0.86	0.3	1.1
	13-8	164.5			0.5	0	0	0	0	0
	13-9	164.5			0.37	1.1	1.1	0	0	0
14	14-1	164.5	1	0.8	1.31	1.8	0.8	0.72	0.31	0.95
	14-2	164.4	1.7	1.6	2.1	1.6	1.54	1.43	1.11	1.63
	14-3	162.4	1.55	1.44	1.8	1.1	1040	1.32	1	143
	14-4	160.4	1	1	1.2	1.6	1	1	0.77	1
	14-5	158.4	0.53	0.5	0.6	0.6	0.53	0.53	0.46	1.55
	14-6	157.15								
	14-7	155.5								
	14-8	155.5								

original data table Measurement

Block	Pressure relief hole									
	Holes	Hole level El	2.10.06	16.10.06	1.11.2006	15.11.2006	30.11.2006	15.12.2006	16.01.2007	31.01.2007
	No	El (m)								
	U/S W.L		210.99	211.33	211.16	210.8	210.34	209.76	208.36	207.67
	D/S W.L		166.8	166.9	166.1	166.7	166.6	167.1	167.4	167.2
7	7-1	187	2.04	1.8	1.72	2	2.14	2.3	2.6	2.7
	7-2	187	2.45	2.36	2.38	2.48	2.55	2.66	2.9	3
	7-3	187	2.55	2.45	2.51	2.63	2.7	2.82	3.03	3.13
8	8-1	187	2.55	2.45	2.51	2.63	2.7	2.8	3.03	3.13
	8-2	187	2.56	2.45	2.51	2.63	2.7	2.82	3.03	3.13
	8-3	187	2.68	2.58	2.66	2.79	2.88	3	3.3	3.4
	8-4	187	2.7	2.6	2.68	2.8	2.9	3	3.3	3.4
	8-5	187	2.65	2.49	2.6	2.74	2.85	3	3.4	3.6
	8-6	187	2.63	2.46	2.56	2.72	2.83	3	3.4	3.57
	8-7	187	2.63	2.46	2.65	2.72	2.83	3	3.36	3.57
9	9-1	187	7.72	7.5	7.63	7.8	7.84	7.93	8.13	8.3
	9-2	187	6.42	6.18	6.24	6.35	6.47	6.58	6.98	7.13
	9-3	187	8.12	8	7.99	8.08	8.08	8.54	8.72	8.69
	9-4	185.25	2.94	2.84	2.88	2.93	3	3.15	3.53	3.78
	9-5	185.25	2.25	2.25	2.55	2.25	2.25	2.34	2.68	2.9
	9-6	181	0	0	0	0	0	0	0.42	0.65
	9-7	179.5	0.89	0	0	0.98	1.35	2.32	2.53	2.6
	9-8	179.5	2.42	0.85	1.76	2.53	2.75	2.75	2.94	3.07
10	10-1	179.5	4.16	3.9	4	4.2	4.25	4.32	4.55	4.6
	10-2	179.5	4.7	4.5	4.69	4.76	4.8	4.86	4.95	5.03
	10-3	179.5	5.56	5.53	5.62	5.76	5.83	5.93	6	6.04
	10-4	179.5	5.67	5.53	5.6	5.74	5.82	5.9	6	6.04
	10-5	179.5	10.6	5.53	5.6	5.74	5.8	5.88	6	6.04
	10-6	179.5	12.45	9.96	10	10.06	10	10.08	10.16	10.03
	10-7	179.5	0.6	12.2	12.25	12.43	12.38	12.36	12.4	12.42
	10-8	179.5	12.7	0.6	0.6	0.6	0.6	0.6	0.6	0.6
11	11-1	179.5	12.2	12.44	10.9	10.91	11.18	12.6	12.63	10.8
	11-2	178.5	10.28	10.96	11	11.23	11.1	11.1	11.16	11.12
	11-3	176.75	6.79	10.05	10.09	10.31	10.2	10.2	10.27	10.22
	11-4	175	6	6.6	1.65	6.85	6.8	6.8	6.87	6.88
	11-5	175	9.13	6	6	6	6	6	6	6
	11-6	175	5	8.93	9	9.2	9.1	9.1	9.14	9.1
	11-7	175	0.78	5	5	5	5	5	5	5
	11-8	175	9.26	0.8	0.8	0.8	0.8	0.8	0.8	0.81
12	12-1	175	7.54	9.1	9.13	9.31	9.26	9.26	9.27	9.22
	12-2	175	5.49	7.52	7.52	7.5	7.52	7.52	7.52	7.52
	12-3	175	9.33	7.52	5.48	5.48	5.48	5.48	5.48	5.48
	12-4	175	9.45	5.48	9.2	9.44	9.34	9.34	9.35	9.3
	12-5	175	9.5	9.18	9.34	9.58	9.47	9.49	9.47	9.43
	12-6	175	5.03	9.31	9.4	9.63	9.52	9.52	9.5	9.48
	12-7	175	2	9.36	5	5	5	5	5	5
	12-8	175	0.55	5	2	2	2	2	2	2
13	13-1	175	9.46	2	0.6	0.6	0.6	0.58	0.58	0.58
	13-2	175	8.42	0.6	9.36	9.6	9.5	9.5	9.5	9.47
	13-3	174	6.55	9.32	8.32	8.5	8.46	8.46	8.44	8.43
	13-4	172	4.85	8.3	6.43	6.65	6.57	6.58	6.54	6.48
	13-5	170	2.87	6.4	4.75	4.97	4.89	4.9	4.87	4.84
	13-6	163	1.25	4.72	2.77	3.6	2.9	2.92	2.9	2.87
	13-7	166.25	1.1	2.74	1.16	1.4	1.29	1.3	1.3	1.26
	13-8	164.5	0	1.12	0	0.26	0	0	0.15	0.1
	13-9	164.5	0	0	0	0	0	0	0	
14	14-1	164.5	1.06	0.95	0.96	1.1	1.1	1.1	1.1	1.08
	14-2	164.4	1.74	1.65	1.65	1.82	1.76	1.76	1.76	1.75
	14-3	162.4	1.53	1.48	1.48	1.63	1.57	1.6	1.57	1.57
	14-4	160.4	1.12	1.1	1.1	1.18	1.16	1.17	1.2	1.17
	14-5	158.4	0.57	0.56	0.56	0.59	0.6	0.6	0.6	0.62
	14-6	157.15								
	14-7	155.5								
	14-8	155.5								

original data table Measurement

Block	Pressure relief hole		16.02.2007	2007/5/3	19/3/2007	2/4/2007	15/5/2007	30.5.2007	15/6/2007	30/6/2007
	Holes	Hole level El								
	No	El (m)								
	U/S W.L		206.84	205.78	204.83	203.85	200.76	199.89	199.43	199.79
	D/S W.L		166.9	167.5	167.5	167.5	167.40	167.5	166.9	167.4
7	7-1	187	2.86	2.86	3.03	3.13	3.67	3.64	3.82	3.63
	7-2	187	3.22	3.2	3.41	3.54	4.25	4.16	4.33	4.16
	7-3	187	3.34	3.3	3.52	3.63	4.38	4.27	4.49	4.2
8	8-1	187	3.34	3.3	3.52	3.63	4.38	4.54	4.78	4.5
	8-2	187	3.34	3.3	3.52	3.63	4.38	4.54	4.78	4.5
	8-3	187	3.6	3.59	3.79	3.93	4.69	4.72	4.98	4.68
	8-4	187	3.62	3.61	3.81	3.93	4.70	4.76	5	4.7
	8-5	187	3.8	3.86	4.1	4.3	5.27	5.31	5.6	5.26
	8-6	187	3.78	3.83	4.07	4.27	5.24	5.28	5.56	5.23
	8-7	187	3.78	3.821	4.07	4.28	5.24	5.28	5.56	5.23
9	9-1	187	8.37	8.45	8.62	8.74	9.40	9.52	9.83	9.4
	9-2	187	7.27	7.34	7.49	7.64	8.40	8.44	8.72	8.35
	9-3	187	9.05	9.18	9.31	9.44	10.10	10.21	10.6	10.16
	9-4	185.25	3.94	4.14	4.35	4.59	5.54	5.68	6.04	5.64
	9-5	185.25	3.08	3.3	3.51	3.67	4.72	4.93	5.28	4.85
	9-6	181	0.8	1.6	1.25	1.51	2.45	2.67	3	2.6
	9-7	179.5	2.73	2.9	3.05	3.22	3.90	4.04	4.41	3.95
	9-8	179.5	3.18	3.34	3.5	3.68	4.40	4.4	1.39	4.4
10	10-1	179.5	4.65	4.77	4.86	4.99	5.54	5.63	5.95	5.5
	10-2	179.5	5.05	5.18	5.26	5.37	5.85	5.96	6.27	5.88
	10-3	179.5	6.06	6.15	6.21	6.32	6.49	6.77	7.03	6.69
	10-4	179.5	6.06	6.16	6.23	6.35	6.49	6.88	7.14	6.79
	10-5	179.5	6.06	6.16	6.23	6.35	6.79	6.88	7.14	6.8
	10-6	179.5	10.19	10.28	10.28	10.23	10.69	10.96	11	10.67
	10-7	179.5	12.38	12.45	12.4	12.4	12.72	12.66	12.93	12.63
	10-8	179.5	0.6	0.6	0.6	0.6	0.60	0.6	0.6	0.6
11	11-1	179.5	12.55	12.14	12.55	12.55	12.92	12.84	13.3	12.79
	11-2	178.5	11.03	11.16	11.5	11	11.43	11.36	11.82	11.33
	11-3	176.75	10.15	10.25	10.16	10.14	10.50	10.42	10.91	10.39
	11-4	175	6.84	6.97	6.9	6.89	7.40	7.38	7.75	7.3
	11-5	175	6	6	6	6	6.00	6	6	6
	11-6	175	9	9.1	8.97	8.9	9.30	9.21	9.57	9.12
	11-7	175	5	5	5	5	5.00	5	5	5
	11-8	175	0.8	0.81	0.8	0.81	0.30	0.82	0.81	0.82
12	12-1	175	9.13	9.24	9.4	9.14	9.43	9.32	9.7	9.23
	12-2	175	7.52	7.52	7.52	7.52	7.52	7.52	7.52	7.52
	12-3	175	5.48	5.48	9.16	5.48	5.48	5.48	5.48	5.48
	12-4	175	9.3	9.32	9.29	9.1	9.50	9.42	9.76	9.32
	12-5	175	9.37	9.45	9.34	9.22	9.63	9.56	9.87	9.46
	12-6	175	9.43	9.5	5	9.26	9.68	9.61	9.93	9.52
	12-7	175	5	5	2	5	5.00	5	5	5
	12-8	175	2	2	2	2	2.00	3	2	2
13	13-1	175	0.58	0.58	0.58	0.58	0.58	0.6	0.58	0.58
	13-2	175	9.4	9.49	9.33	9.27	9.68	9.62	9.92	9.49
	13-3	174	8.36	8.45	8.3	8.22	8.64	8.58	8.87	8.45
	13-4	172	6.4	6.5	6.36	6.28	6.72	6.62	6.94	6.52
	13-5	170	4.8	4.86	4.71	4.65	5.00	4.94	5.26	4.87
	13-6	163	2.81	2.88	2.74	2.67	3.00	2.96	3.27	2.9
	13-7	166.25	1.03	1.26	1.12	1.05	1.44	1.32	1.64	1.27
	13-8	164.5	0	0	0		0.33	0	0.5	0
	13-9	164.5	0	0	0			0	0.56	0
14	14-1	164.5	1.4	1.08	0.97	0.92	1.24	1.12	1.4	1.12
	14-2	164.4	1.71	1.79	1.67	1.63	1.89	1.8	2.04	1.78
	14-3	162.4	1.55	1.85	1.51	1.48	1.70	1.67	1.854	1.67
	14-4	160.4	1.2	1.2	1.15	1.13	1.20	1.24	1.38	1.25
	14-5	158.4	0.6	0.6	0.61	0.6	0.63	0.63	0.7	0.64
	14-6	157.15							5	
	14-7	155.5							4.5	
	14-8	155.5								

original data table Measurement

Block	Pressure relief hole		16/7/2007	30/7/2007	2007/9/14	2007/9/30	15/10/2007	30/10/2007	30/11/2007	17/12/2007
	Holes	Hole level El								
	No	El (m)								
	U/S W.L		199.98	200.32	207.07	208.67	210.6	210.79	209.82	209.82
	D/S W.L		167.4	167.1	167.2	166.3	166.3	165.5	167	167
7	7-1	187	3.79	3.66	2.75	2.69	2.07	1.99	1.94	2.05
	7-2	187	4.37	4.22	3.14	3.1	2.62	2.55	2.57	2.73
	7-3	187	4.51	4.35	3.37	3.3	2.82	2.57	2.74	2.9
8	8-1	187	4.69	4.49	3.37	3.3	2.81	2.78	2.74	2.9
	8-2	187	4.69	4.49	3.37	3.3	2.82	2.75	2.74	2.9
	8-3	187	4.87	4.68	3.53	3.46	3.03	2.98	3.04	3.19
	8-4	187	4.89	4.7	3.57	3.5	3.05	3	3.05	3.2
	8-5	187	5.5	5.25	3.6	3.27	2.8	2.7	2.84	3.02
	8-6	187	5.48	5.24	3.75	3.35	2.77	2.7	2.8	2.99
	8-7	187	5.49	5.23	3.57	3.35	2.71	2.7	2.81	2.99
9	9-1	187	9.57	9.51	8.31	8.25	7.73	7.73	7.77	7.87
	9-2	187	8.47	8.31	7.07	7	6.52	5.56	6.62	6.75
	9-3	187	10.32	10.16	8.9	8.93	8.83	8.3	8.32	8.46
	9-4	185.25	5.79	5.6	3.91	3.72	3.14	3.1	3.6	3.33
	9-5	185.25	4.95	4.87	3.12	2.94	2.25	2.26	2.33	2.52
	9-6	181	2.68	2.6	0.8	0.7	0	0	0	0.26
	9-7	179.5	4.05	4.8	2.81	3.9	2.22	2.24	2.24	2.71
	9-8	179.5	4.4	4.4	3.59	3.7	3.09	2.85	3.09	3.24
10	10-1	179.5	5.63	5.62	4.56	4.7	4.21	4.24	4.2	4.36
	10-2	179.5	5.97	5.98	5.12	5.17	4.74	4.76	4.7	4.82
	10-3	179.5	6.77	6.8	6.1	6.13	5.79	5.8	5.73	5.87
	10-4	179.5	6.88	6.9	6.09	6.14	5.77	5.8	5.72	5.85
	10-5	179.5	6.88	6.9	6.1	6.14	5.77	5.8	5.72	5.85
	10-6	179.5	10.77	10.81	10.33	10.57	10.24	10.36	10.15	10.23
	10-7	179.5	12.76	12.8	12.46	12.82	12.5	12.54	12.36	12.48
	10-8	179.5	0.6	0.6	0.6	0.6	0.6	0.6	0.6	0.6
11	11-1	179.5	12.97	13.07	12.61	13.25	12.71	12.83	12.66	12.76
	11-2	178.5	1.5	11.61	11.24	11.8	11.26	11.3	11.08	11.14
	11-3	176.75	10.58	10.7	10.33	10.94	10.1	10.45	10.2	10.32
	11-4	175	7.45	7.59	7.14	7.6	7.02	7.1	6.84	6.93
	11-5	175	6	6	6	6	6	6	6	6
	11-6	175	9.31	9.45	9.27	9.85	9.36	9.5	9.14	9.23
	11-7	175	5	5	5	5	5	5	5	5
	11-8	175	0.81	0.82	0.82	0.85	0.82	0.85	0.83	0.83
12	12-1	175	9.42	9.58	9.43	9.99	9.52	9.61	9.29	9.36
	12-2	175	7.52	7.52	7.52	7.52	7.52	7.52	7.52	7.52
	12-3	175	5.48	5.48	5.48	5.48	5.48	5.48	5.48	5.48
	12-4	175	9.47	9.65	9.55	10.1	9.64	9.8	9.37	9.46
	12-5	175	9.57	9.77	9.7	10.27	9.78	9.78	9.51	9.6
	12-6	175	9.72	9.83	9.77	9.36	9.84	10.1	9.56	9.66
	12-7	175	5	5	5	5	5	5	5	5
	12-8	175	2	2	2	2	2	2	2	
13	13-1	175	0.58	0.58	0.58	0.58	0.58	0.58	0.58	0.58
	13-2	175	9.62	9.81	9.75	10.3	9.79	9.95	9.54	9.62
	13-3	174	8.58	8.78	8.11	9.27	8.75	8.93	8.5	8.58
	13-4	172	6.64	6.84	6.76	7.34	6.85	7.05	6.59	6.65
	13-5	170	4.98	5.17	5.08	5.62	5.18	5.33	4.92	5.01
	13-6	163	3	3.19	3.4	3.78	3.2	3.4	2.94	3.03
	13-7	166.25	1.38	1.57	1.46	2	1.59	1.76	1.33	1.41
	13-8	164.5	0	0.43	0	0.83	0.42	0.56	0.21	0.27
	13-9	164.5	0	0.43	0	0.71	0.25	0.37	0	0
14	14-1	164.5	1.2	1.36	1.22	1.74	1.37	4.5	1.18	1.24
	14-2	164.4	1.85	2	1.86	2.35	2.02	2.14	1.83	1.9
	14-3	162.4	1.71	1.82	1.76	2.1	1.87	2	1.73	1.79
	14-4	160.4	1.27	1.33	1.26	1.53	1.37	1.5	1.28	1.32
	14-5	158.4	0.67	0.86	0.64	0.72	0.66	1.7	0.75	0.65
	14-6	157.15								
	14-7	155.5								
	14-8	155.5								

original data table Measurement

Block	Pressure relief hole									
	Holes	Hole level El								
	No	El (m)	2008/2/1	15/01/2008	2008/2/5	2008/2/12	2008/2/27	2008/3/18	2008/3/31	2008/4/30
U/S W.L			209.82	209.82	206.92	206.92	207.1	204.98	204.18	202.22
D/S W.L			167	167	166.7	206.92	167.3	167.4	167.4	167.4
7	7-1	187	2.14	2.4	2.63	2.78	2.9	2.9	3.11	3.33
	7-2	187	2.83	2.96	3.1	3.2	3.31	3.3	3.56	3.76
	7-3	187	2.98	3.14	3.25	3.4	3.47	3.46	3.78	3.9
8	8-1	187	2.98	3.13	3.25	3.4	3.47	3.46	3.72	3.9
	8-2	187	2.99	3.13	3.57	3.35	3.47	3.46	3.72	3.95
	8-3	187	3.29	3.44	3.6	3.67	3.8	3.79	4.03	4.24
	8-4	187	3.32	3.46	3.63	3.7	3.82	3.81	4.04	4.26
	8-5	187	3.17	3.39	3.6	3.74	3.95	4.06	4.26	4.67
	8-6	187	3.16	3.36	3.6	3.71	3.93	4.04	4.23	4.65
	8-7	187	3.16	3.36	3.6	3.71	3.93	4.04	4.24	4.64
9	9-1	187	7.95	8.08	8.17	8.23	8.37	8.43	8.55	8.9
	9-2	187	6.68	6.98	7.17	7.25	7.36	7.43	7.54	7.9
	9-3	187	8.53	8.64	8.17	8.8	8.85	8.9	8.98	9.34
	9-4	185.25	3.47	3.59	3.82	3.93	4.41	4.29	4.46	4.96
	9-5	185.25	2.64	2.8	3	3.1	3.32	3.44	3.62	4.22
	9-6	181	0.38	0.55	0.73	0.82	0.98	1.18	1.36	1.9
	9-7	179.5	2.71	2.76	2.68	2.71	2.86	2.97	3.08	3.46
	9-8	179.5	3.33	3.47	3.55	3.7	3.8	3.87	3.96	4.4
10	10-1	179.5	4.4	4.51	4.6	4.64	4.7	4.71	4.79	5.14
	10-2	179.5	4.84	4.94	5.1	5.1	5.15	5.18	5.24	5.54
	10-3	179.5	5.88	5.97	6.1	6.14	6.16	6.19	6.25	6.5
	10-4	179.5	5.85	5.9	6.1	6.12	6.14	6.17	6.23	6.5
	10-5	179.5	5.85	5.9	6.1	6.13	6.14	6.17	6.22	6.5
	10-6	179.5	10.17	10.27	10.28	10.34	10.28	10.22	10.2	10.43
	10-7	179.5	12.38	12.27	12.4	12.48	12.35	12.22	12.18	12.36
	10-8	179.5	0.6	0.6	0.6	0.6	0.6	0.6	0.6	0.6
11	11-1	179.5	12.57	12.7	12.66	12.72	12.55	12.38	12.32	12.52
	11-2	178.5	10.9	11.06	11.1	11.1	10.93	10.8	10.72	10.93
	11-3	176.75	10.11	10.26	10.26	10.3	10.1	9.9	9.85	1
	11-4	175	6.71	6.9	6.9	7	6.8	6.69	6.62	6.86
	11-5	175	6	6	6	6	6	6	6	6
	11-6	175	8.95	9.12	9.1	9.23	8.91	8.73	8.61	8.8
	11-7	175	5	5	5	5	5	5	5	5
	11-8	175	0.84	0.83	0.85	0.85	0.84	0.84	0.84	0.87
12	12-1	175	9.08	9.24	9.22	9.27	9.04	8.83	8.73	8.9
	12-2	175	7.52	7.52	7.52	7.52	7.52	7.52	7.52	7.52
	12-3	175	5.48	5.48	5.48	5.48	5.48	5.48	5.48	5.48
	12-4	175	9.12	9.36	9.35	9.4	9.14	8.95	8.8	8.98
	12-5	175	9.26	9.48	9.5	9.53	9.27	9.08	8.92	9.14
	12-6	175	9.33	9.54	9.57	9.6	9.31	9.13	8.98	9.16
	12-7	175	5	5	5	5	5	5	5	5
	12-8	175	2	2	2	2	2	2	2	2
13	13-1	175	0.58	0.6	0.58	0.58	0.58	0.58	0.85	0.58
	13-2	175	9.31	9.5	9.55	9.57	9.31	9.12	8.96	9.18
	13-3	174	8.25	8.48	8.5	8.53	8.27	8.09	7.94	8.1
	13-4	172	6.33	6.54	6.55	6.59	6.3	6.13	5.98	6.14
	13-5	170	4.69	4.89	4.91	4.94	4.69	4.52	4.37	4.52
	13-6	163	2.7	2.93	2.92	2.94	2.7	2.55	2.47	2.54
	13-7	166.25	1.1	1.3	1.4	1.35	1.09	0.92	0.79	0.9
	13-8	164.5	0.21	0	0.15	0.18	0	0	0	0
	13-9	164.5	0	0	0	0.15	0	0	0	0
14	14-1	164.5	0.99	1.16	1.2	1.2	1	0.87	0.78	0.9
	14-2	164.4	1.7	1.83	1.83	1.88	1.7	1.58	1.51	1.62
	14-3	162.4	1.63	1.76	1.8	1.88	1.67	1.57	1.5	1.6
	14-4	160.4	1.21	1.3	1.32	1.32	1.23	1.17	1.12	1.2
	14-5	158.4	0.63	0.66	0.66	0.7	0.63	0.6	0.59	0.6
	14-6	157.15								
	14-7	155.5								
	14-8	155.5								

original data table Measurement

Block	Pressure relief hole				
	Holes	Hole level El			
	No	El (m)	2008/7/15	2008/7/31	2008/8/15
U/S W.L			208.69	211.57	212.26
D/S W.L			167.9	170.9	171.8
7	7-1	187	2.51	1.62	1.12
	7-2	187	2.91	1.79	1.46
	7-3	187	3.12	2	1.72
8	8-1	187	3.11	1.99	1.72
	8-2	187	3.11	1.99	1.72
	8-3	187	3.36	2.14	1.89
	8-4	187	3.38	2.19	1.9
	8-5	187	3.14	1.73	1.33
	8-6	187	3.11	1.7	1.3
	8-7	187	3.13	1.7	1.3
9	9-1	187	7.66	6.13	5.61
	9-2	187	6.54	5.43	5.02
	9-3	187	8.21	6.61	6.02
	9-4	185.25	3.3	2.4	2.07
	9-5	185.25	2.38	2.25	2.25
	9-6	181	0.2	0	0
	9-7	179.5	2.12	0	0
	9-8	179.5	3.07	0	0
10	10-1	179.5	4	2.07	1.49
	10-2	179.5	4.59	3.13	2.44
	10-3	179.5	5.7	4.34	3.66
	10-4	179.5	5.64	4.29	3.7
	10-5	179.5	5.65	4.29	7.6
	10-6	179.5	9.97	8.45	7.6
	10-7	179.5	11.86	8.83	7.92
	10-8	179.5	0.6	0.6	0.6
11	11-1	179.5	11.86	8.88	8
	11-2	178.5	10.38	7.36	6.48
	11-3	176.75	9.41	6.18	5.28
	11-4	175	6.13	3.07	2.27
	11-5	175	6	6	6
	11-6	175	8.17	4.81	4
	11-7	175	5	5	5
	11-8	175	0.86	0.85	0.85
12	12-1	175	8.33	5	4.2
	12-2	175	7.52	7.52	7.52
	12-3	175	5.48	5.48	5.48
	12-4	175	8.42	5.1	4.34
	12-5	175	8.57	5.3	4.6
	12-6	175	8.63	5.4	4.7
	12-7	175	5	5	5
	12-8	175	2	2	2
13	13-1	175	0.58	0.58	0.58
	13-2	175	8.62	5.54	4.86
	13-3	174	7.58	4.5	3.83
	13-4	172	5.64	2.69	2.05
	13-5	170	4.07	1.97	1.92
	13-6	163	2.09	0	0
	13-7	166.25	0.49	0	0
	13-8	164.5	0	0	0
	13-9	164.5	0	0	0
14	14-1	164.5	0.54	0	0
	14-2	164.4	1.32	0	0
	14-3	162.4	1.28	0	0
	14-4	160.4	1.03	0	0
	14-5	158.4	0.56	0	0
	14-6	157.15			
	14-7	155.5			
	14-8	155.5			

original data table Measurement of Water Table inside Pressure Relief Holes In Gallery

Block	Pressure releaf hole		Depth below the collar (m)							
	Holes	Hole level El	29/5/6	15.06.06	30.06.06	17.07.06	31.07.06	15.08.06	31.08.06	18.09.06
	No	El (m)								
19	19-1	155.5								
	19-2	155.5								
	19-3	157.25					0		0	
	19-4	159					0		0	
	19-5	160.75					0		0	
	19-6	162.75					0		0.67	
	19-7	164.5				1.22	1	0.96	0	1
	19-8	166.5			3.6	0	0	0	2.61	0
	19-9	167.5	3.35	3.17	3.3	3.37	3.1	3	0	3.1
20	20-1	167.5	0.89	0.7	1.3	6.83	0.52	0.44	0.55	0.7
	20-2	167.5	1	1	1	1	1	1	0.25	1
	20-3	167.5	0.25	0.25	2.25	0.25	0.25	2.85	1.17	0.25
	20-4	169	2	1.92	2.45	2	1.73	1.62	0	1.95
	20-5	171				0	0	0	0	0
	20-6	172.75				0	0	0	6.86	0
	20-7	174.75	7.7	7.57	8.1	7.7	7.36	7.3	8.68	7.6
	20-8	176.75	9.63	9.47	10.2	9.6	8.61	9.3	9.85	9.47
	20-9	178	10.75	10.6	1.22	9.77	10.37	10.3	1.35	10.57
21	21-1	178	1.4	1.4	1.4	1.4	1.4	1.4	1.35	1.4
	21-2	178	1.53	1.53	1.53	1.53	1.53	1.53	8.4	1.53
	21-3	178	9.8	9.54	10.23	9.62	9.2	9	7.18	9.1
	21-4	178	8.7	8.51	9.1	8.6	8.07	7.82	6.39	7.76
	21-5	178	8.1	7.95	8.42	8.1	7.45	7	6.39	6.85
	21-6	178	7.6	7.45	8	7.5	6.96	6.62	3	6.37
	21-7	178	5.7	5.63	6.1	5.6	4.83	4.43	0	4
	21-8	178				0	0	0	0	0
	22	22-1	178	2.3	2.25	2.75	2.12	1.12	0.5	0
22-2		178.75	1.8	1.73	2.22	1.6	0.4	0	0.27	0
22-3		180.75	3.27	3.2	3.68	3	1.73	1.1	0.36	0
22-4		182.75	0.36	0.36	0.36	0.35	0.36	0.36	3.4	0.36
22-5		184.75	6.67	6.63	7.16	6.54	5.15	4.43	4.66	2.95
22-6		186.75	7.4	7.4	7.4	7.4	7.4	7.4	6.67	4.17
22-7		188.75	10.25	10.25	10.6	10.1	8.5	7.7	7.78	6.15
23		23-1	190.75	11.48	11.5	12	11.4	9.8	8.9	9.62
	23-2	192.5	13.7	13.71	14.2	13.65	11.34	10.5	7.47	9.2
	23-3	193	10.33	10.33	10.33	10.33	10.33	10.33	7.45	10.33
	23-4	193	12.9	13	13.36	13	9.88	8.34	7.44	7.25
	23-5	193	12.9	13	13.4	13	9.87	8.24	7.09	7.25
	23-6	193	10.8	10.8	10.8	10.71	10.71	10.71	0.53	6.65
	23-7	193	0.53	0.53	0.53	0.53	0.53	0.53	3.2	0.53
	23-8	193	9.7	9.7	9.7	9.7	9.76	9.7	3.18	3
	24	24-1	193	10.7	10.7	10.7	10.76	10.7	10.7	3.19
24-2		193	7	7	7	7	7	6.64	2.7	2.96
24-3		193	6.55	6.66	6.65	6.64	6.64	4.3	0.33	3
24-4		193	6	6.4	6.55	6.14	4.4	0.32	2.41	2.68
24-5		193	0.32	0.32	0.32	0.32	0.32	3.57	1.85	0.32
24-6		193	3.86	4	4.53	4.31	3.8	1.85	1.69	2.4
24-7		193	1.13	1.4	1.53	1.7	1.76	2.1	2.1	1.3
24-8		193	2.1	2.1	2.1	2.1	2.1	5.1	1.55	1.6
25		25-1	193	5.1	5.1	5.1	5.1	5.1	1.43	1.55
	25-2	193	5.77	5	5.42	4.31	1.7	2.15	1.1	1
	25-3	193	2.15	2.15	2.15	2.15	2.15	1.2	0.91	0.85
	25-4	193	5.66	4.8	5.2	4	1.41	0.3	0	0.87
	25-5	193	5.78	4.3	4.8	3.17	0.57	0.47	0.22	0
	25-6	193.21	5.86	4.48	4.82	3	0.77	0.67	0.4	0.35
	25-7	193.42	5.77	5.77	5.77	5.77	5.77	0.87	0.56	0.55
	25-8	193.63	6.2	4.17	4.85	2.7	1.17	1.1	0.6	0.77
	26	26-1	193.84	5.82	3.87	4.32	2.9	1.36	1.25	0.97
26-2		194.05	4.57	2.53	2.6	2.5	1.5	0.94	1.5	1.1
26-3		194.26	2.5	2	2.1	1.9	1.23	0.45	1.23	0.77
26-4		194.5	1.84	1.4	1.53	1.3	0.77	2.35	0.77	0
26-5		196.5	7.77	3.34	3.4	3.18	2.64	2.62	2.64	1.92
26-6		196.75	4	4	3.75	3.5	2.93	2.93	2.93	2.93

original data table Measurement

Block	Pressure relief hole		2.10.06	16.10.06	1.11.2006	15.11.2006	30.11.2006	15.12.2006	16.01.2007	31.01.2007
	Holes	Hole level El								
	No	El (m)								
19	19-1	155.5								
	19-2	155.5								
	19-3	157.25								
	19-4	159			0	0	0			
	19-5	160.75			0	0	0			
	19-6	162.75			0	0	0			
	19-7	164.5	1.07	1	1	1.1	1.1	1.1	1.1	1.1
	19-8	166.5	0	0	0	0	0	0	0	0
	19-9	167.5	3.24	3.12	3.12	3.24	3.2	3.2	3.27	3.17
20	20-1	167.5	0.76	0.7	0.71	0.85	0.8	0.78	0.8	0.51
	20-2	167.5	1.03	1	1	0	1	1	1	1
	20-3	167.5	0.25	0.25	2.25	0.25	2.25	0.25	0.25	0.25
	20-4	169	1.9	1.8	1.2	2	1.88	1.67	1.9	1.84
	20-5	171	0	0	0	0	0	0	0	0.1
	20-6	172.75	0	0	0	0	0	0	0	0
	20-7	174.75	7.58	7.52	3.52	7.65	7.59	7.57	7.6	7.55
	20-8	176.75	9.57	9.48	9.53	9.64	9.63	9.58	9.7	9.54
	20-9	178	10.58	10.48	10.49	10.7	10.6	10.59	10.12	10.56
21	21-1	178	1.4	1.4	1.4	1.4	1.4	1.4	1.4	1.4
	21-2	178	1.53	1.53	1.53	1.5	1.53	1.53	1.53	1.53
	21-3	178	9.1	9	9	9.17	9.15	9.15	9.23	9.19
	21-4	178	7.8	7.66	6.67	7.82	7.82	7.82	7.95	7.92
	21-5	178	6.95	6.74	6.74	6.25	6.86	6.85	7	7
	21-6	178	6.4	6.25	6.27	6.4	6.42	6.44	6.58	6.59
	21-7	178	3.98	3.83	3.88	4	4	4	4.27	4.3
	21-8	178	0	0	0	0	0	0	0	0
22	22-1	178	0	0	0	0	0	0	0	0.17
	22-2	178.75	0	0	0	0	0	0	0	0
	22-3	180.75	0	0	0	0	0	0	0.42	0.59
	22-4	182.75	0.36	0.36	0.36	0.36	0.36	0.36	0.36	0.36
	22-5	184.75	3.78	2.76	2.7	2.73	2.83	2.9	3.3	3.45
	22-6	186.75	3.91	7.1	5.1	3.83	3.93	4	4.5	4.7
	22-7	188.75	5.9	5.74	5.72	5.79	5.92	6	6.52	6.74
23	23-1	190.75	6.92	6.75	6.76	6.89	7	6.18	7.6	7.78
	23-2	192.5	8.98	8.86	8.83	8.9	9	9.07	9.1	9.22
	23-3	193	7.11	10.33	10.33	7.23	7.4	7.15	10.33	6.56
	23-4	193	7.09	7.22	7.17	7.22	7.36	7.13	6.57	6.52
	23-5	193	7.08	7.22	7.17	7.2	7.36	7.13	6.6	6.52
	23-6	193	6.61	6.74	6.67	6.7	6.87	6.58	6.1	5.91
	23-7	193	0.53	0.53	0.53	0.53	0.53	0.53	0.53	0.53
	23-8	193	2.47	3.03	2.7	2.93	3.18	2.5	0.86	0.84
24	24-1	193	2.44	3	2.67	2.9	3.1	2.37	0.8	0.8
	24-2	193	2.44	3	2.68	2.88	3.1	2.38	0.82	0.82
	24-3	193	2.46	3	2.69	2.92	3.1	2.38	0.83	0.82
	24-4	193	2.2	2.7	2.39	2.62	2.74	1.92	0.6	0.64
	24-5	193	0.32	0.32	0.52	0.32	0.32	0.32	0.32	0.32
	24-6	193	1.94	2.32	2.1	2.32	2.44	1.53	0.33	0.39
	24-7	193	1.3	1.33	1.37	1.4	1.44	1.47	0.3	0.33
	24-8	193	1.5	1.64	1.57	1.68	1.76	1.55	1	1.11
25	25-1	193	1.5	1.68	1.64	1.71	2	1.93	1.5	1.53
	25-2	193	1	1.13	1	1.1	1.2	1.26	0.9	0.9
	25-3	193	1.02	1.19	0.8	0.9	1	1.1	0.7	0.7
	25-4	193	0.83	1.98	0.81	0.9	1	1.1	0.75	0.74
	25-5	193	0	0.28	0	0.2	0.27	0.4	0	0
	25-6	193.21	0.26	0.45	0.25	0.3	0.45	0.56	0.26	0.3
	25-7	193.42	0.46	0.65	0.45	0.5	0.63	0.76	0.46	0.35
	25-8	193.63	0.65	0.84	0.64	0.78	0.83	0.96	0.64	0.5
26	26-1	193.84	0.89	1.09	0.87	0.98	1	1.19	0.87	0.76
	26-2	194.05	1.03	1.2	1	1.11	1.17	1.3	0.95	0.87
	26-3	194.26	0.7	0.8	0.65	0.74	0.82	0.9	0.64	0.62
	26-4	194.5	0	0	0	0	0	0	0	0
	26-5	196.5	1.9	1.93	1.92	1.9	1.92	2	1.9	1.9
	26-6	196.75	2.19	2.2	2.2	2.2	2.2	2.27	2.52	2.18

original data table Measurement

Block	Pressure relief hole		16.02.2007	2007/5/3	19/3/2007	2/4/2007	15/5/2007	30.5.2007	15/6/2007	30/6/2007
	Holes	Hole level El								
	No	El (m)								
19	19-1	155.5								
	19-2	155.5								
	19-3	157.25		0	0		-			
	19-4	159		0	0		-		0.25	
	19-5	160.75		0	0		-		8.13	
	19-6	162.75		0	0				0	
	19-7	164.5	1.1	1.13	1.1	1.08	1.30	1.22	10.04	1.18
	19-8	166.5	0	0	0		-	0	0	0
	19-9	167.5	3.14	3.3	3.17	3.15	3.40	3.27	0.7	3.24
						0.94				
20	20-1	167.5	0	0.68	0.58	0.6		1	1	0.74
	20-2	167.5	0.75	1	1	1	1.00	1	1	1
	20-3	167.5	1	0.25	0.25	0.25	0.25	0.25	0.25	0.25
	20-4	169	0.25	1.73	1.73	1.74	2.00	2.22	2.22	1.97
	20-5	171	1.96	0	0	0	-	0	0	0
	20-6	172.75	0	0	0	0	-	0	0	0
	20-7	174.75	7.65	7.46	7.43	7.44	7.73	7.94	7.94	7.67
	20-8	176.75	9.52	9.48	9.43	9.42	9.74	9.81	9.81	5.52
	20-9	178	10.65	10.48	10.48	10.4	10.78	11	11	10.72
						1.40				
21	21-1	178	1.4	1.4	1.4	1.4		1.4	1.4	1.4
	21-2	178	1.53	1.53	1.5	1.53	1.50	1.53	1.53	1.53
	21-3	178	9.24	9.23	9.19	9.23	9.77	9.89	10.09	9.72
	21-4	178	7.95	8.1	8.3	8.09	8.60	8.85	9.12	8.65
	21-5	178	6.96	7.13	7.17	7.2	7.88	8.16	8.56	8.05
	21-6	178	6.11	6.75	6.7	6.86	7.49	7.7	8.04	7.59
	21-7	178	4.33	4.55	4.75	4.8	5.57	5.82	6.2	5.77
	21-8	178	0	0	0		-	0	0	0
							2.00			
22	22-1	178	0.31	0.57	0	0.95		2.49	2.49	2.47
	22-2	178.75	0	0	0		1.40	1.8	1.8	1.9
	22-3	180.75	0.77	1.1	0	1.61	2.85	3.28	3.28	3.34
	22-4	182.75	0.36	0.36	0.36	0.36	0.36	0.36	0.36	0.36
	22-5	184.75	3.65	4.1	4.34	4.56	5.83	0.38	0.38	0.87
	22-6	186.75	4.95	5.4	7.38	6.1	7.37	7.36	7.36	7.4
	22-7	188.75	7.03	7.54	7.89	8.21	9.60	10.1	10.1	10.5
							10.84			
23	23-1	190.75	8.1	8.64	10.45	9.38		11.43	11.43	11.75
	23-2	192.5	9.6	10.26	1.4	11.03	12.66	13.22	13.22	13.69
	23-3	193	7.28	8.32	1.5	10.37	10.34	10.33	10.33	10.33
	23-4	193	7.25	8.3	9.19	8.55	11.00	11.69	11.69	12.56
	23-5	193	7.25	8.3	8.3	8.54	11.00	11.69	11.69	12.56
	23-6	193	6.8	7.86	7.17	8.22	9.63	10.39	10.39	10.8
	23-7	193	0.53	0.53	6.7	0.53	0.53	0.53	0.53	0.53
	23-8	193	2.88	4.42	9.04	4.83	6.42	7.54	7.54	9.72
							6.40			
24	24-1	193	2.85	4.4	9.04	4.97		7.41	7.41	9.7
	24-2	193	2.85	4.4	10.12	4.97	6.30	7.1	7.1	7.1
	24-3	193	2.85	4.39	9.72	4.8	5.84	5.83	5.83	5.83
	24-4	193	1.9	2.99	8.38	3.34	3.94	4.26	4.26	4.45
	24-5	193	0.32	0.32	8.38	0.32	0.32	0.32	0.32	0.32
	24-6	193	1.17	2.15	8.02	2.53	3.30	3.58	3.58	3.68
	24-7	193	0.5	1.57	0.53	0.07	0.98	1.1	1.1	1.33
	24-8	193	1.45	2.15	4.58	2.21	2.20	2.21	2.21	2.2
							5.00			
25	25-1	193	1.8	2.45	4.55	3.13		5.13	5.13	5.14
	25-2	193	1.04	1.79	4.55	2.55	4.90	5.37	5.37	5.34
	25-3	193	0.81	1.64	4.56	2.15	2.16	2.15	2.15	2.16
	25-4	193	0.82	1.62	3.1	2.42	4.90	5.39	5.39	5.28
	25-5	193	0	1.12	0.32	1.66	5.00	5.49	5.49	5.16
	25-6	193.21	0.21	1.2	2.2	1.83	5.12	5.58	5.58	5.33
	25-7	193.42	0.4	1.4	0.62	2.09	5.66	5.76	5.76	5.3
	25-8	193.63	0.56	1.6	2.21	2.23	5.84	6.29	6.29	5.5
							5.83			
26	26-1	193.84	0.8	1.83	2.76	2.46		6.24	5.65	4.8
	26-2	194.05	0.93	1.9	2.14	2.46	5.88	6.3	4.97	2.59
	26-3	194.26	0.69	1.5	1.94	2.25	5.56	5.63	3.91	2.14
	26-4	194.5	0	0.55	2	2.7	5.00	5.07	2.93	1.46
	26-5	196.5	1.97	2.5	1.3	3.6	6.92	6.96	4.83	3.37
	26-6	196.75	2.24	2.75	1.47	3.88	7.20	7.25	5.11	3.65

original data table Measurement

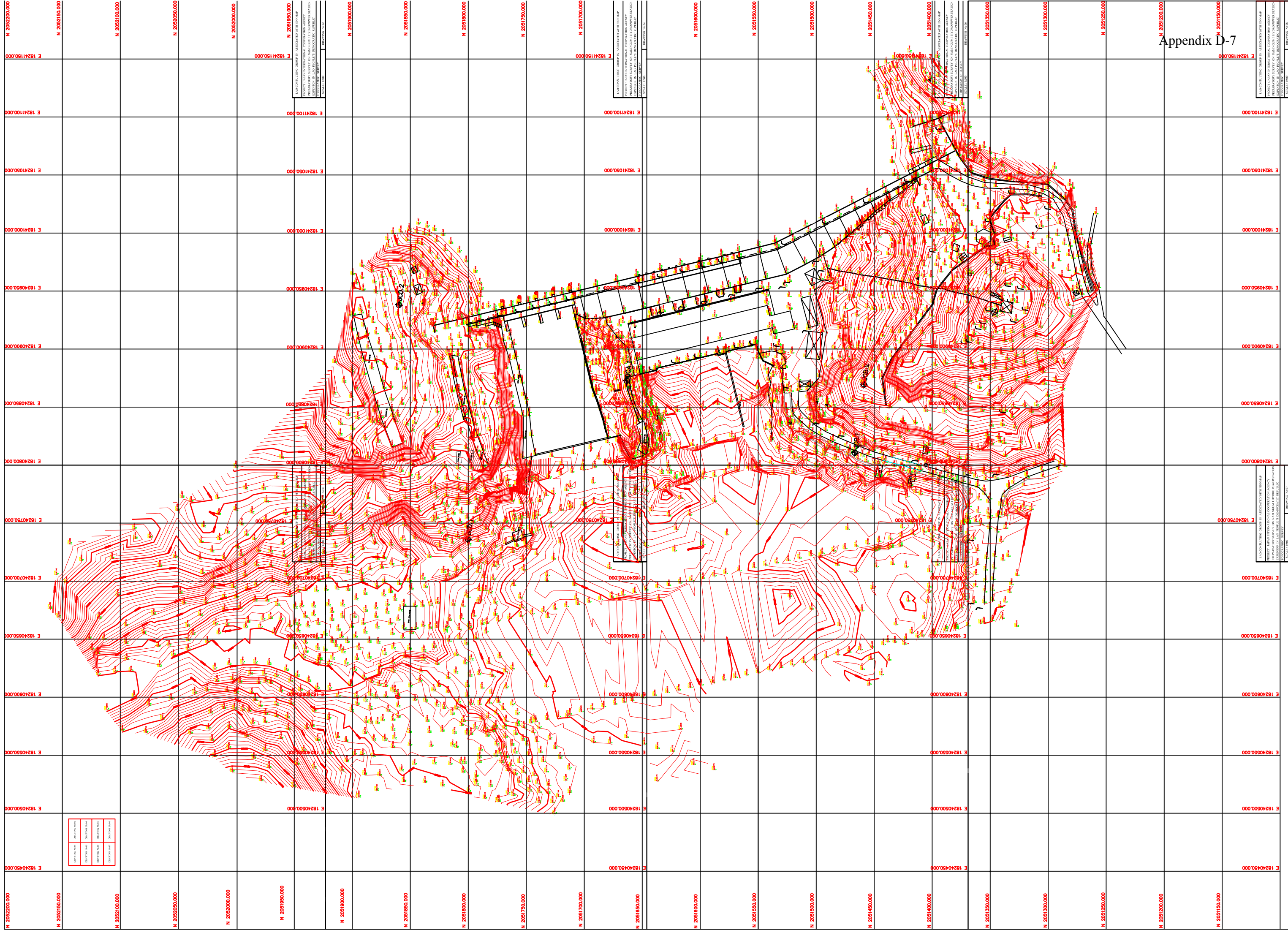
Block	Pressure relief hole		16/7/2007	30/7/2007	2007/9/14	2007/9/30	15/10/2007	30/10/2007	30/11/2007	17/12/2007
	Holes	Hole level El								
	No	El (m)								
19	19-1	155.5								
	19-2	155.5								
	19-3	157.25								
	19-4	159								
	19-5	160.75								
	19-6	162.75								
	19-7	164.5	1.25	1.33	1.14	1.5	1.21	1.43	1.07	1.12
	19-8	166.5	0	0	0	0	0	0	0	0
	19-9	167.5	3.45	3.5	3.21	3.73	3.42	3.46	3.22	3.27
20	20-1	167.5	0.92	1.05	1	1.3	1.06	1.3	0.74	0.81
	20-2	167.5	1	1	1	1	1	1	1	1
	20-3	167.5	0.25	0.25	0.25	2.25	0.25	0.25	0.25	0.25
	20-4	169	2.1	2.24	2.15	2.8	2.15	3.16	2	2.04
	20-5	171	0	0	0	0	0			
	20-6	172.75	0	0	0	0	0	0.26	0.26	0
	20-7	174.75	7.8	7.94	7.9	8.52	8.52	8.7	7.7	7.78
	20-8	176.75	9.8	9.9	7.73	10.43	9.95	10	9.67	9.72
	20-9	178	10.72	11	10.96	11.51	10.95	11.64	10.69	10.78
21	21-1	178	1.4	1.4	1.4	1.4	1.4	1.4	1.4	1.4
	21-2	178	1.53	1.53	1.53	1.53	1.53	1.53	1.53	1.53
	21-3	178	5.8	9.9	9.41	9.41	9.41	9.72	9.16	9.2
	21-4	178	8.83	8.9	8.34	8.7	8.13	8.29	7.86	7.94
	21-5	178	8.26	8.3	7.37	7.84	7.18	7.14	6.97	7.04
	21-6	178	7.77	7.83	6.96	7.27	6.7	6.7	6.47	6.57
	21-7	178	5.63	5.96	4.71	4.84	4.23	4.24	4.06	4.17
	21-8	178	0	0	0	0	0	0.2	0.2	0
22	22-1	178	2.58	2.57	0.66	0.51	0	0	0	0
	22-2	178.75	2	2	0	0	0	0	0	0
	22-3	180.75	3.42	3.43	1.17	0.8	0	0	0	0
	22-4	182.75	0.36	0.36	0.36	0.36	0.36	0.36	0.36	0.36
	22-5	184.75	6.92	6.92	4.43	4	3.2	2.9	2.9	3.08
	22-6	186.75	7.37	7.37	7.37	7.37	7.37	7.37	7.37	7.37
	22-7	188.75	10.57	10.54	7.7	7.3	6.46	6.15	6.19	6.36
23	23-1	190.75	11.8	11.78	8.97	8.49	7.51	7.2	7.25	7.47
	23-2	192.5	13.74	13.85	10.21	9.86	9.15	8.91	9	9.11
	23-3	193	10.33	10.33	10.33	10.33	10.33	10.33	10.33	10.33
	23-4	193	12.65	12.9	6.62	7.69	7.03	6.76	7.12	7.24
	23-5	193	12.75	12.9	7.62	7.53	7.07	6.76	7.12	7.23
	23-6	193	10.79	10.79	10.97	10.79	10.79	10.79	10.79	10.79
	23-7	193	0.53	0.53	0.53	0.53	0.53	0.53	0.53	0.53
	23-8	193	9.72	9.73	3.31	3.56	2.54	2	2.36	3.36
24	24-1	193	10.37	10.72	10.72	10.72	10.72	10.72	10.72	10.72
	24-2	193	7.1	7.1	7.1	7.1	7.1	7.1	7.1	7.1
	24-3	193	5.85	5.83	3.3	3.55	2.54	2	2.36	3.34
	24-4	193	4.69	4.67	2.25	2.34	1.65	1.13	2	2.2
	24-5	193	0.32	0.32	0.32	0.32	0.32	0.32	0.32	0.32
	24-6	193	3.78	3.71	1.85	1.62	0.95	0.4	1.51	1.4
	24-7	193	1.42	1.5	1.69	1.7	1.63	0.35	0.93	0.94
	24-8	193	2.21	2.21	2.21	2.21	2.21	2.21	2.21	2.21
25	25-1	193	5.13	5.13	5.13	5.13	5.13	5.13	5.13	5.13
	25-2	193	5.1	5.1	1.39	1.17	0.98	0.85	1.1	1.07
	25-3	193	2.16	2.16	2.16	2.16	2.16	2.16	2.16	2.16
	25-4	193	4.96	4.97	1.25	0.96	0.83	0.83	0.87	0.87
	25-5	193	4.73	4.74	0	0	0	0	0	0.21
	25-6	193.21	4.78	4.77	0.28	0.24	0.26	0.27	0.25	0.38
	25-7	193.42	4.74	4.64	0.51	0.43	0.45	0.47	0.45	0.58
	25-8	193.63	4.87	4.8	0.69	0.64	0.67	0.67	0.64	0.77
26	26-1	193.84	4.42	4.4	1.1	0.22	0.88	0.88	0.87	1
	26-2	194.05	4.54	2.56	0.9	1.03	1.05	1.06	1.05	1.15
	26-3	194.26	2.1	2.11	0.3	0.8	0.76	0.77	0.8	0.8
	26-4	194.5	1.59	1.58	2.22	0.15	0	0	0	0
	26-5	196.5	3.5	3.5	2.8	2.1	1.96	2	1.96	1.99
	26-6	196.75	3.78	3.77	2.25	2.24	2.24	2.25	2.23	2.25

original data table Measurement

Block	Pressure relief hole									
	Holes	Hole level El								
	No	El (m)	2008/2/1	15/01/2008	2008/2/5	2008/2/12	2008/2/27	2008/3/18	2008/3/31	2008/4/30
19	19-1	155.5								
	19-2	155.5								
	19-3	157.25								
	19-4	159								
	19-5	160.75								
	19-6	162.75								
	19-7	164.5	1	1.11	1.2	1.2	1.03	1	0.97	1.1
	19-8	166.5	0	0	0	0	0	0	0.05	0
	19-9	167.5	2.9	3.2	3.27	3.26	3.1	3	2.94	3.14
20	20-1	167.5	0.5	0.74	0.9	0.88	0.55	0.45	0.3	0.45
	20-2	167.5	1	1	1	1	1	1	1	1
	20-3	167.5	0.25	0.25	0.25	0.25	0.25	0.25	0.25	0.25
	20-4	169	1.8	1.96	2.1	2.1	1.84	1.7	1.52	1.74
	20-5	171			0	0	0	0	0	0
	20-6	172.75	0	0	0	0	0	0	0	0
	20-7	174.75	7.48	7.7	7.82	7.83	7.5	7.41	7.26	7.4
	20-8	176.75	9.41	9.63	9.72	9.8	9.45	9.32	9.2	9.4
	20-9	178	10.49	10.71	10.84	10.83	10.52	10.44	10.2	10.48
21	21-1	178	1.4	1.4	1.4	1.4	1.4	1.4	1.4	1.4
	21-2	178	1.53	1.53	1.53	1.53	1.53	1.53	1.53	1.35
	21-3	178	9.03	9.27	9.42	9.42	9.15	9.11	9	9.32
	21-4	178	7.77	7.29	8.1	8.1	8.8	7.92	7.88	8.2
	21-5	178	6.95	7.09	7.2	7.2	7.11	7.08	7.1	7.45
	21-6	178	6.45	6.64	6.8	6.8	6.7	6.66	6.68	7
	21-7	178	4.13	4.28	4.44	4.44	4.45	4.54	4.63	5.06
	21-8	178	0	0	0	0	0	0	0	0
22	22-1	178	0	0	0	0	0.53	0.69	0.85	1.51
	22-2	178.75	0	0	0.4	0.4	0	0	0	0.71
	22-3	180.75	0.3	0.53	0	0	0.95	1.2	1.44	2.13
	22-4	182.75	0.36	0.36	0.36	0.36	0.36	0.36	0.36	0.36
	22-5	184.75	3.24	3.44	3.7	3.7	3.94	4.25	4.52	5.3
	22-6	186.75	7.37	7.37	7.37	7.37	7.37	7.35	7.37	7.37
	22-7	188.75	6.55	6.79	7	7	7.31	7.75	8.16	9
23	23-1	190.75	7.67	7.9	8.1	8.1	8.45	8.91	9.36	10.27
	23-2	192.5	9.35	9.39	9.2	9.2	9.33	9.97	10.84	12.24
	23-3	193	10.33	10.33	10.33	10.33	10.33	10.33	10.37	10.33
	23-4	193	7.66	7.3	6.96	6.96	6.73	7.75	8.56	11
	23-5	193	10.14	7.3	6.7	6.7	6.76	7.75	8.56	11
	23-6	193	10.79	10.79	10.79	10.79	6.11	10.79	10.79	9.81
	23-7	193	0.53	0.53	0.53	0.53	0.53	0.53	0.53	0.53
	23-8	193	1.4	2.62	1.42	1.42	1.45	3.04	4.71	6.6
24	24-1	193	10.23	10.72	10.72	10.72	1.41	3	4.64	6.55
	24-2	193	7.1	7.1	7.1	7.1	1.44	3	4.64	6.44
	24-3	193	0.37	2.57	1.36	1.36	1.42	3	3	5.82
	24-4	193	0.56	1.17	0.5	0.5	0.53	1.47	0.3	4.1
	24-5	193	0.32	0.32	0.32	0.32	0.26	0.33	2.16	0.32
	24-6	193	0	0.43	0	0	0	0.72	0.54	3.22
	24-7	193	0	0.45	0	0	0	0.47	0.54	0.76
	24-8	193	2.21	2.21	2.21	2.21	1.4	1.8	2.13	2.22
25	25-1	193	5.13	5.13	5.13	5.13	1.5	2.07	2.49	4.32
	25-2	193	1.02	1.19	0.9	0.9	1.13	1.8	2.26	4.29
	25-3	193	0.84	1.02	0.7	0.7	0.95	1.64	2.08	2.16
	25-4	193	0.84	1.03	0.7	0.7	0.98	1.67	2.13	4.3
	25-5	193	0	0.46	0	0	0.4	1.25	1.73	3.91
	25-6	193.21	0.28	0.63	0.3	0.3	0.57	1.4	1.88	4.3
	25-7	193.42	0.48	0.83	0.5	0.5	0.77	1.62	2.11	4.2
	25-8	193.63	0.67	1.03	0.67	0.67	0.96	1.8	2.29	4.2
26	26-1	193.84	0.9	1.25	0.92	0.92	1.17	2.04	2.51	4.5
	26-2	194.05	1.06	1.38	1.1	1.1	1.32	4.14	2.52	4.74
	26-3	194.26	0.84	1.14	0.9	0.9	1.15	1.83	2.12	4.53
	26-4	194.5	0.6	0.25	0.2	0.2	0.4	0.92	1.23	4
	26-5	196.5	2	2.16	2.1	2.1	2.23	2.84	3.15	5.91
	26-6	196.75	2.28	2.44	2.4	2.4	2.62	3.1	3.43	6.17

original data table Measurement

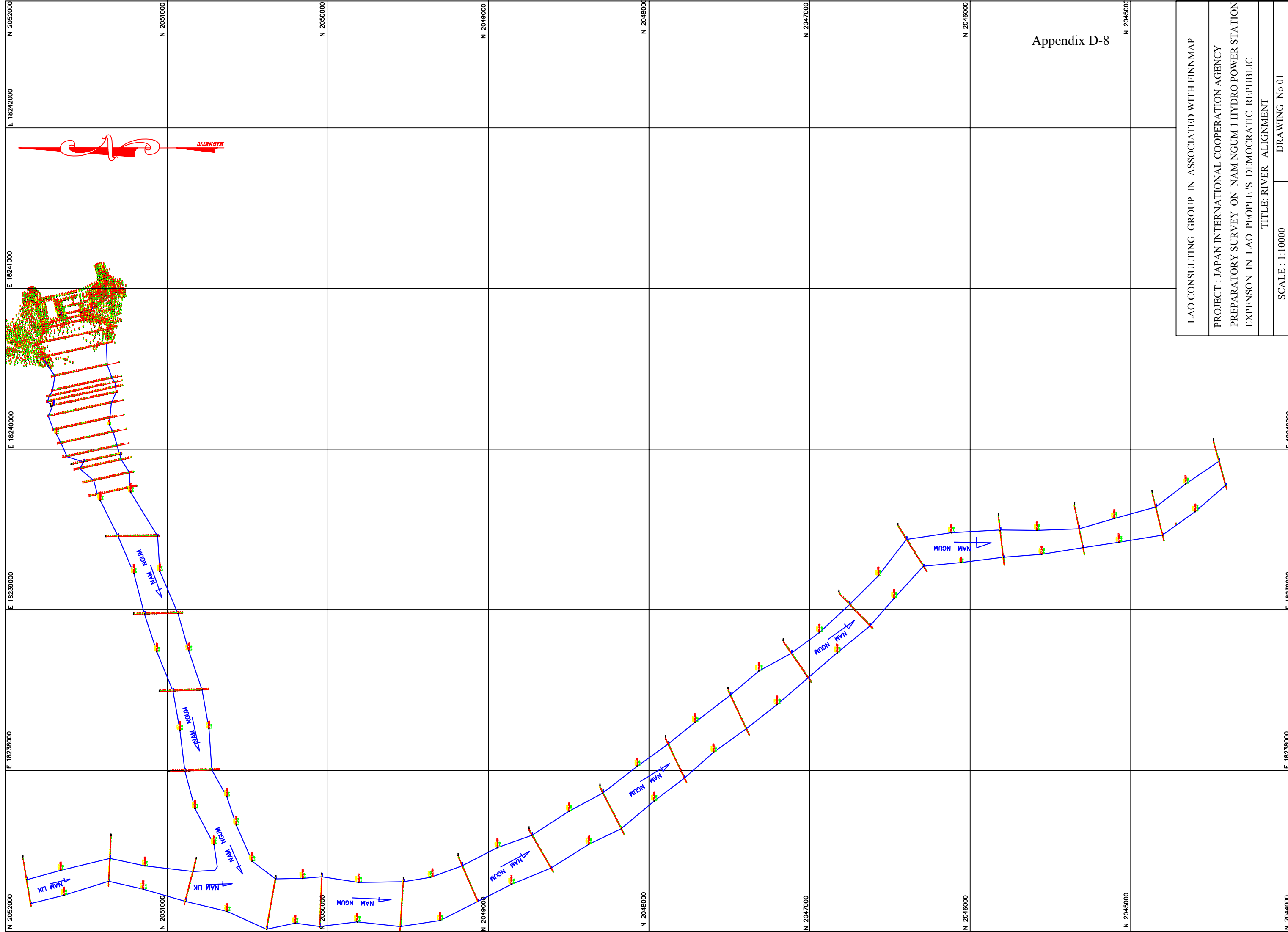
Block	Pressure relief hole				
	Holes	Hole level El			
	No	El (m)	2008/7/15	2008/7/31	2008/8/15
19	19-1	155.5			
	19-2	155.5			
	19-3	157.25		0	0
	19-4	159		0	0
	19-5	160.75		0	0
	19-6	162.75		0	0
	19-7	164.5	0.78	0	0
	19-8	166.5	0	0	0
	19-9	167.5	2.63	0.9	0.62
20	20-1	167.5	0	0	0
	20-2	167.5	1	0	1
	20-3	167.5	0.25	0	0
	20-4	169	1.21	1.21	
	20-5	171	0	0	0
	20-6	172.75	0	0	0
	20-7	174.75	6.87	4.67	4.05
	20-8	176.75	8.67	5.9	5.68
	20-9	178	9.89	7.55	6.86
21	21-1	178	1.4	1.4	1.4
	21-2	178	1.53	1.53	1.53
	21-3	178	8.42	6.18	4.35
	21-4	178	7.25	5.12	3.49
	21-5	178	6.45	4.38	3.26
	21-6	178	5.95	4	1.5
	21-7	178	3.75	2.14	2.14
	21-8	178	0	0	0
22	22-1	178	0	0	0
	22-2	178.75	0	0	0
	22-3	180.75	0	0	0
	22-4	182.75	0.36		
	22-5	184.75	3.1	0.36	0.36
	22-6	186.75	7.37	2.21	1.85
	22-7	188.75	6.59	7.37	7.37
23	23-1	190.75	7.69	5.91	5.34
	23-2	192.5	9.54	7.1	6.63
	23-3	193	10.33	10.33	10.3
	23-4	193	7.57	4.53	4.28
	23-5	193	7.56	4.52	4.28
	23-6	193	7.06	4.16	3.86
	23-7	193	0.53	0.53	0.53
	23-8	193	2.97	0	0
24	24-1	193	2.93	0	0
	24-2	193	2.93	0	0
	24-3	193	2.93	0	0
	24-4	193	1.1	0	0
	24-5	193	0.31	0	0.31
	24-6	193	0	0	0
	24-7	193	0	0	0
	24-8	193	1.1	0.36	5
25	25-1	193	1.370.80	0.63	0
	25-2	193	0.69	0.33	0
	25-3	193	0.7	0	0
	25-4	193	0	0	
	25-5	193	0.24	0	
	25-6	193.21	0.42	0	0
	25-7	193.42	0.62	0	
	25-8	193.63	0.62	0	0.32
26	26-1	193.84	0.85	0.33	0.53
	26-2	194.05	1.04	0.54	0.62
	26-3	194.26	1.04	0.53	0
	26-4	194.5	0.21	0	1.91
	26-5	196.5	2.12	1.91	2.19
	26-6	196.75	2.4	2.19	2.19



CONSULTING GROUP IN ASSOCIATION WITH INMAP
PROJECT: JAPAN INTERNATIONAL COOPERATION AGENCY
PREPARATION OF STUDY ON NANGA-SHI FLOODPROOF STATION
LAWSONSON IN LAO PEOPLE'S DEMOCRATIC REPUBLIC
CONSULTING GROUP
SCALE: 1:500
DRAWING NO. 04

CONSULTING GROUP IN ASSOCIATION WITH INMAP
PROJECT: JAPAN INTERNATIONAL COOPERATION AGENCY
PREPARATION OF STUDY ON NANGA-SHI FLOODPROOF STATION
LAWSONSON IN LAO PEOPLE'S DEMOCRATIC REPUBLIC
CONSULTING GROUP
SCALE: 1:500
DRAWING NO. 04

CONSULTING GROUP IN ASSOCIATION WITH INMAP
PROJECT: JAPAN INTERNATIONAL COOPERATION AGENCY
PREPARATION OF STUDY ON NANGA-SHI FLOODPROOF STATION
LAWSONSON IN LAO PEOPLE'S DEMOCRATIC REPUBLIC
CONSULTING GROUP
SCALE: 1:500
DRAWING NO. 04



Appendix D-8

LAO CONSULTING GROUP IN ASSOCIATED WITH FINNMAP	
PROJECT : JAPAN INTERNATIONAL COOPERATION AGENCY	
PREPARATORY SURVEY ON NAM NGUM 1 HYDRO POWER STATION	
EXPENSION IN LAO PEOPLE'S DEMOCRATIC REPUBLIC	
TITLE: RIVER ALIGNMENT	
SCALE : 1:10000	DRAWING No 01