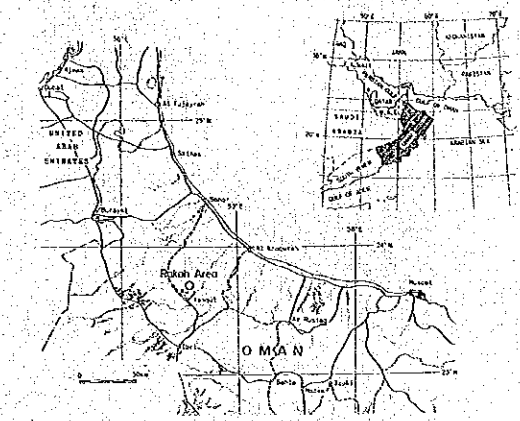
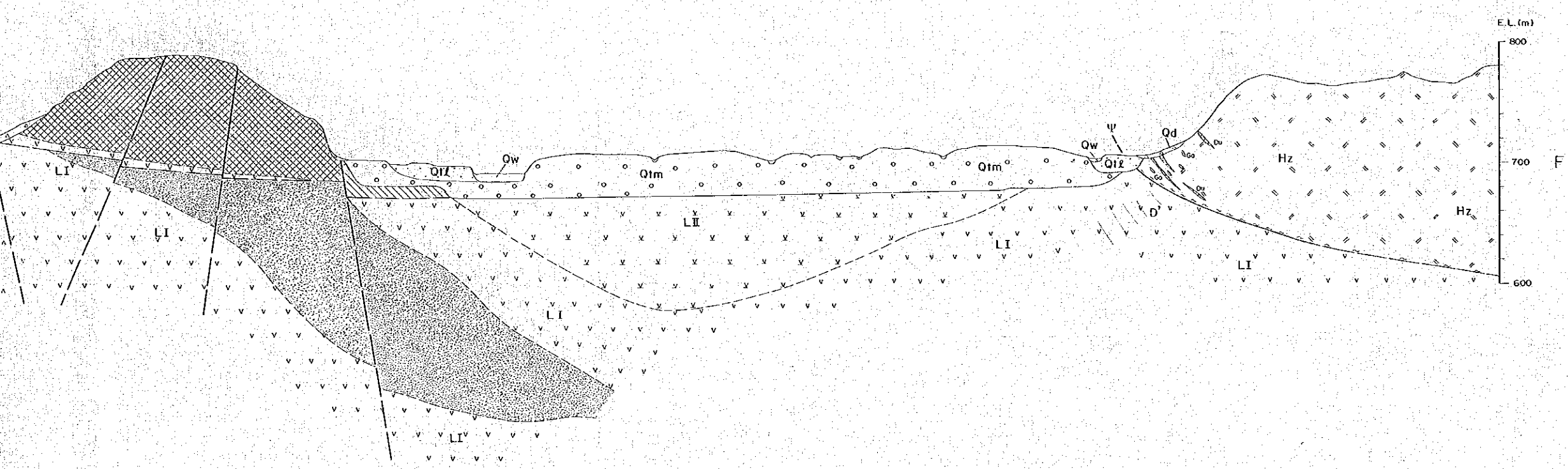
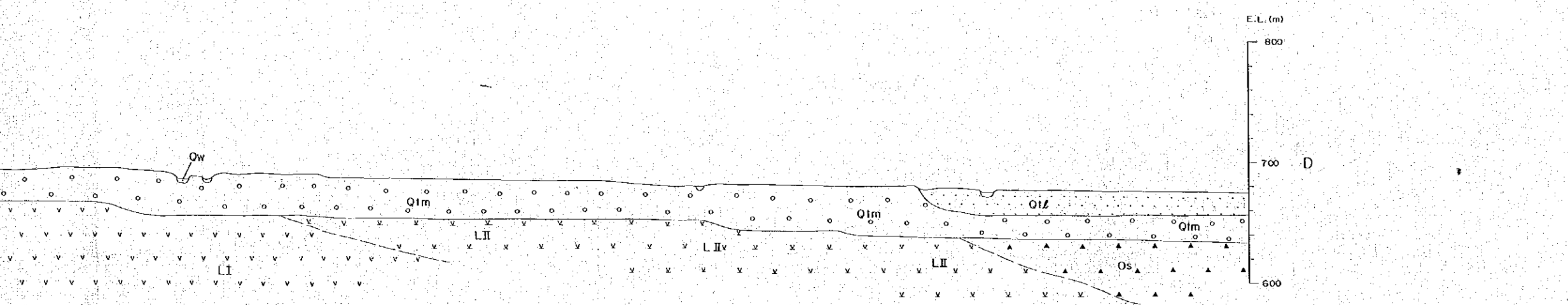
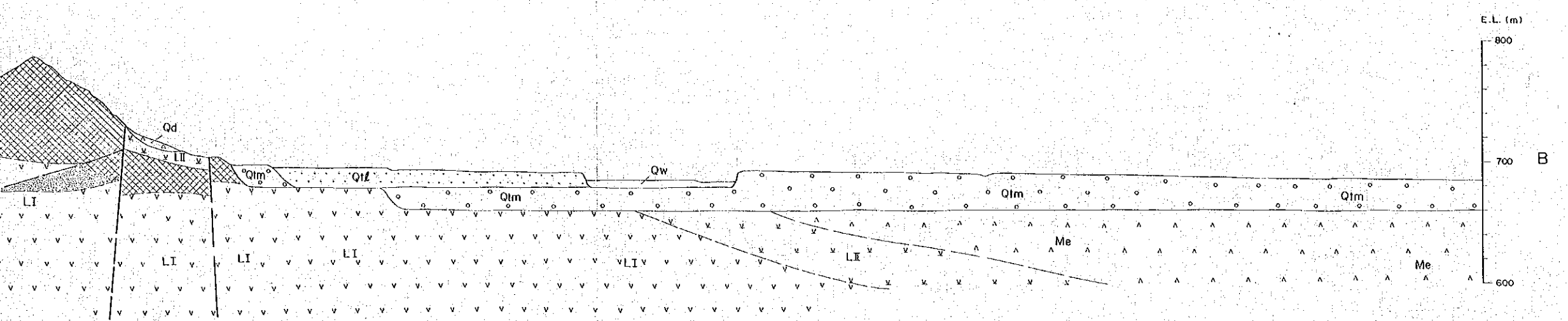
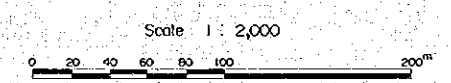


REPORT ON THE MINERAL EXPLORATION
IN
THE RAKAH AREA, SULTANATE OF OMAN

GEOLOGIC SECTIONS OF AREA A



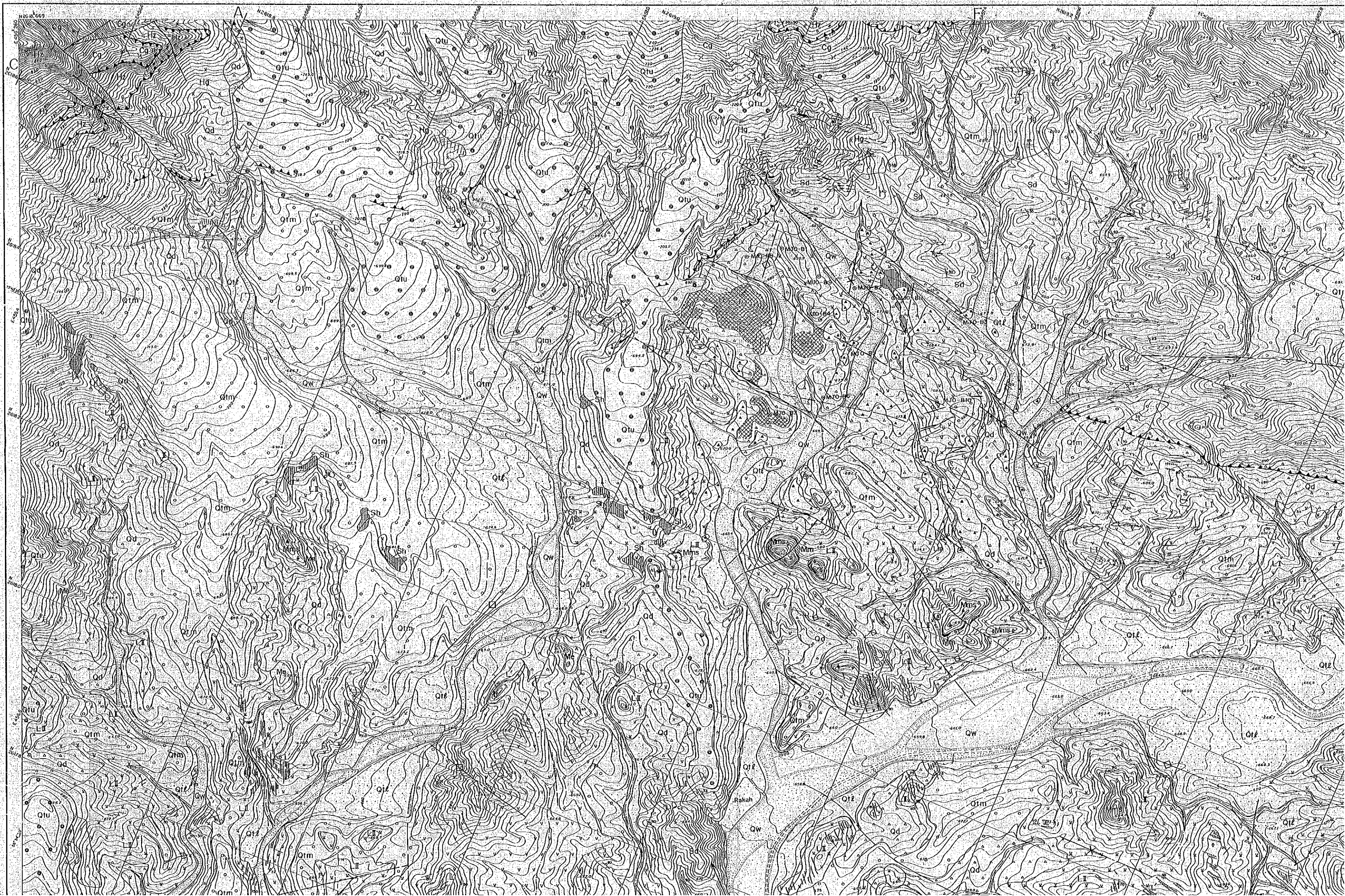
JAPAN INTERNATIONAL COOPERATION AGENCY
METAL MINING AGENCY OF JAPAN
FEBRUARY, 1990



LEGEND

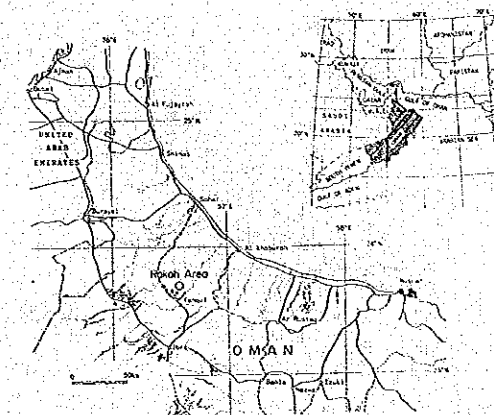
Quaternary	Wadi Sediments	Qw	Gravel, sand	
	Debris	Qd	Talus breccia	
Pleistocene-Holocene	Terrace Deposits	Lower Terrace Deposits	Atl	Gravel, sand
		Middle Terrace Deposits	Atm	Gravel, sand
Sinnai Nappe	Balinah Olistostrome	Os	Olistostromes	
	Small Volcanic Rocks	Me	Pillow and massive lavas	
		Lower Volcanic Rocks	LI	Pillow and massive lavas
	Sheeted-dyke Complex	LI	Pillow lavas	
		Sd	Sheeted dykes	
	High-level Gabbro	Hg	High-level gabbro	
	Cumulate Sequence	Cg	Cumulate layered gabbro	
		Hr	Harzburgite	
	Tectonites	Du	Dunite	
		Cr	Chromitite	
Intrusive Rocks	Ga	Gabbro		
	D	Dykes		
Mineralization				
Contact			Gossanized zone	
Fault; dashed where inferred or concealed			Brecciated ore zone	
Thrust fault; saw-teeth, showing dip			Massive ore zone	
Shear zone			Stockwork ore zone	

RAKAH B AREA



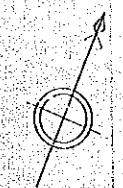
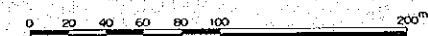
REPORT ON THE MINERAL EXPLORATION
IN
THE RAKAH AREA, SULTANATE OF OMAN

GEOLOGIC MAP OF AREA B



JAPAN INTERNATIONAL COOPERATION AGENCY
METAL MINING AGENCY OF JAPAN
FEBRUARY, 1950

Scale 1 : 2,000



LEGEND

Quaternary	Wadi Sediments	Qw, Gravel, sand	
	Debris	Qd, Talus breccia	
Pleistocene, Holocene	Terrace Deposits	Qtl, Gravel, sand	
		Qtm, Gravel, sand	
		Qtu, Gravel, sand	
		Qts, Olistolith of limestone	
Late Cretaceous	Basinah Olistostrome	Och, Olistolith of chert	
	Suhaylah Formation	Sp, Serpentine	
		Sh, Chert	
Sama'il Nappe	Sama'il Volcanic Rocks	Me, Pillow lavas	
		Mms, Massive lavas	
		Mm, Metalliferous sediments	
		LH, Pillow and massive lavas	
		Lm, Metalliferous sediments	
	Sama'il Ophiolite	Lower Extrusives II	LI, Pillow lavas
		Lower Extrusives I	LI, Pillow lavas
		Sheeted-dyke Complex	Sd, Sheeted-dykes
	Early to Middle Cretaceous	High-level Gabbro	Hg, High-level gabbro
		Cumulate Sequence	Cg, Cumulate layered gabbro
Tectonites		Hr, Harzburgite	
Intrusive Rocks		D, Dykes	
		L, Late dykes	
Stratification, inclined		Fault, dashed where inferred or concealed	
Stratification of pillow lavas, inclined		Thrust fault; saw-teeth, showing dip	
Layering, inclined		Vein	
Foliation, inclined		Geopon	
Dyke, inclined		Drill hole	
Shear zone		Slag dump	
Contact		Section	



1:2,000

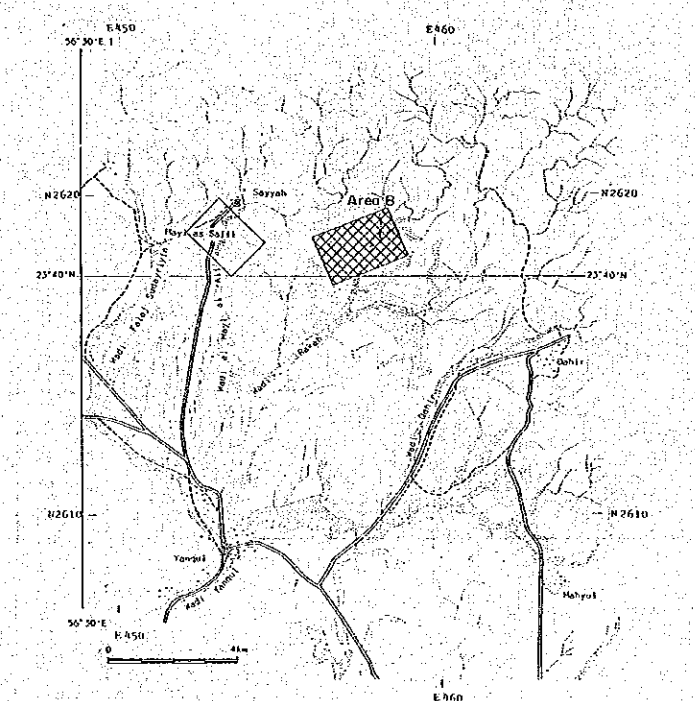
A graphic scale bar located at the bottom right of the map. It consists of a horizontal line with tick marks at intervals of 100 units, labeled 0, 100, 200, and 300. The scale is used to measure distances on the map.

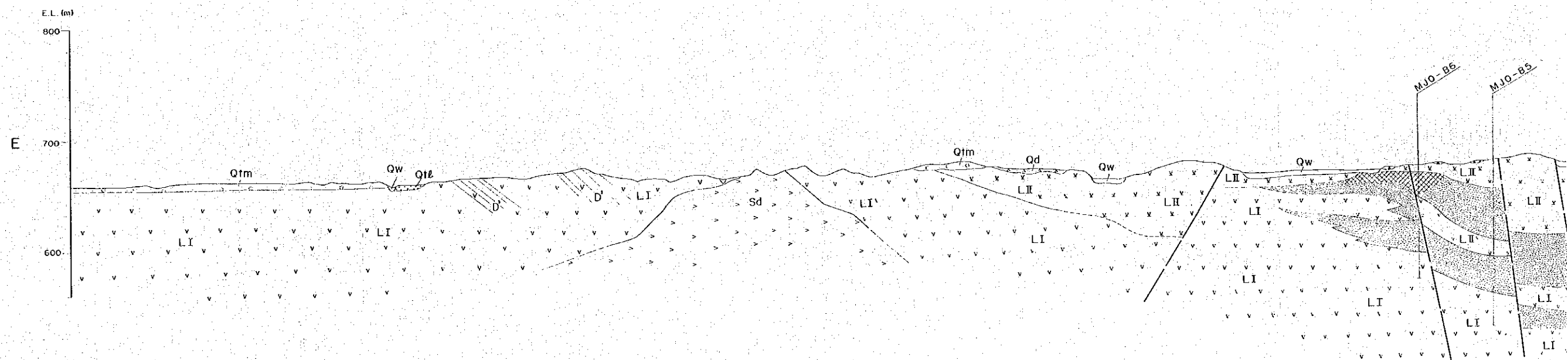
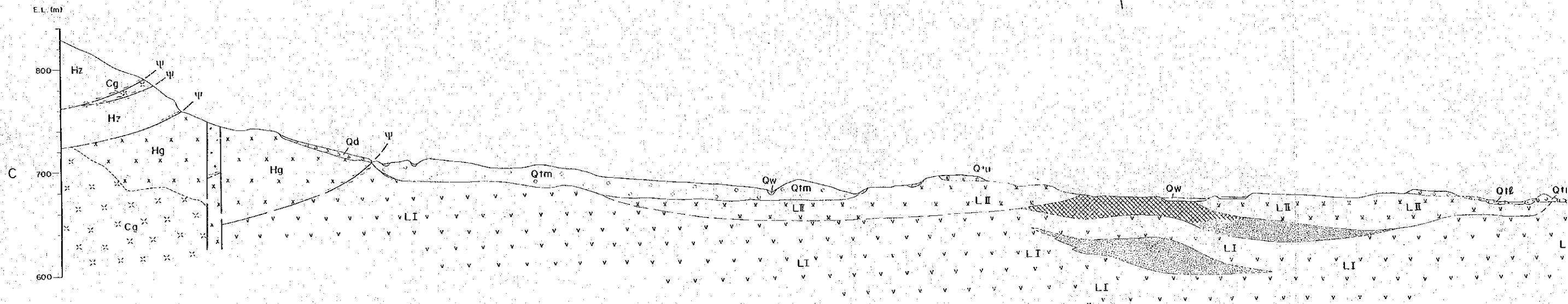
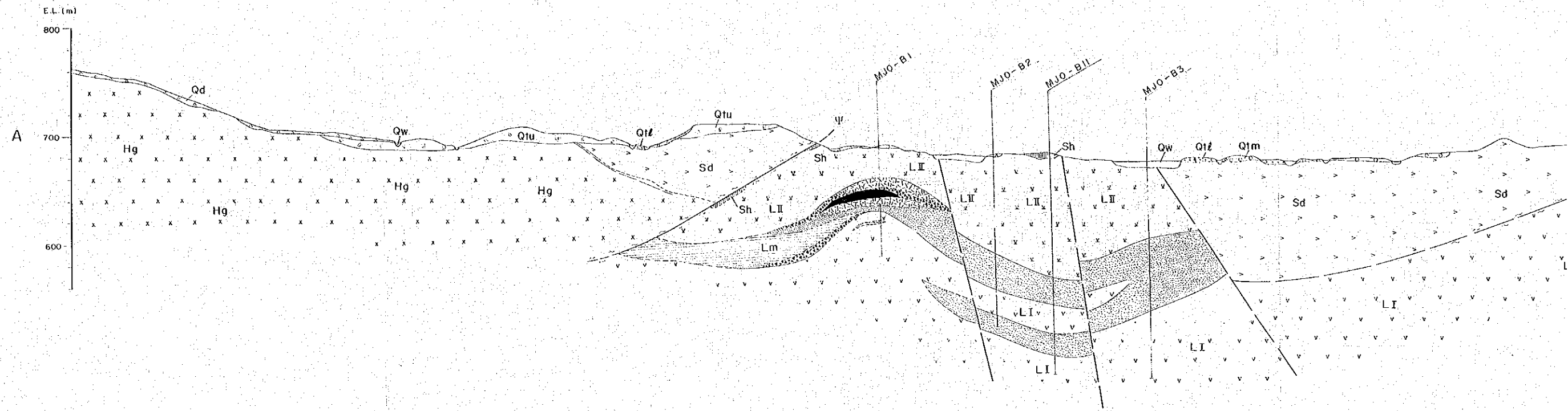


LEGEND

Quaternary	Wadi Sediments	Qw	Gravel, sand	
	Debris	Qd	Talus breccia	
Pliocene	Terrace Deposits	Ql	Gravel, sand	
		Qlm	Gravel, sand	
		Qlu	Gravel, sand	
Late Cretaceous Supra-orogenic Sediments	Batimah Olistostrome	Ol	Olistolith of limestone	
	Subaylah Formation	Och	Olistolith of chert	
		Sp	Serpentinite	
	Sama'il Volcanic Rocks	Me	Pillow lavas	
		Mms	Massive lavas	
		Mm	Metalliferous sediments	
	Early to Middle Cretaceous	Lower Volcanic Rocks	Lil	Pillow and massive lavas
			Lm	Metalliferous sediments
	Sama'il Nappe	Sheeted-dyke Complex	Ll	Pillow lavas
			Sd	Sheeted dykes
High-level Gabbro		Hg	High-level gabbro	
Cumulate Sequence		Cg	Cumulate layered gabbro	
Intrusive Rocks		Hr	Harzburgite	
		D	Dykes	
L		Late dykes		

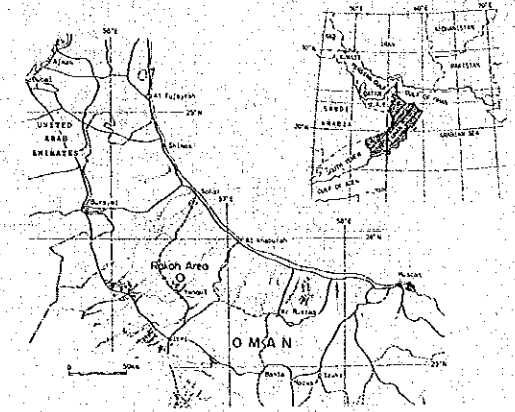
Stratification; inclined	Fault; dashed where inferred or concealed
Stratification of pillow lavas; inclined	Thrust fault, saw-teeth, showing dip
Layering; inclined	Vein
Poliation; inclined	Geosyn
Dyke; inclined	Drill hole
Shear zone	Slag dump
Contact	Section





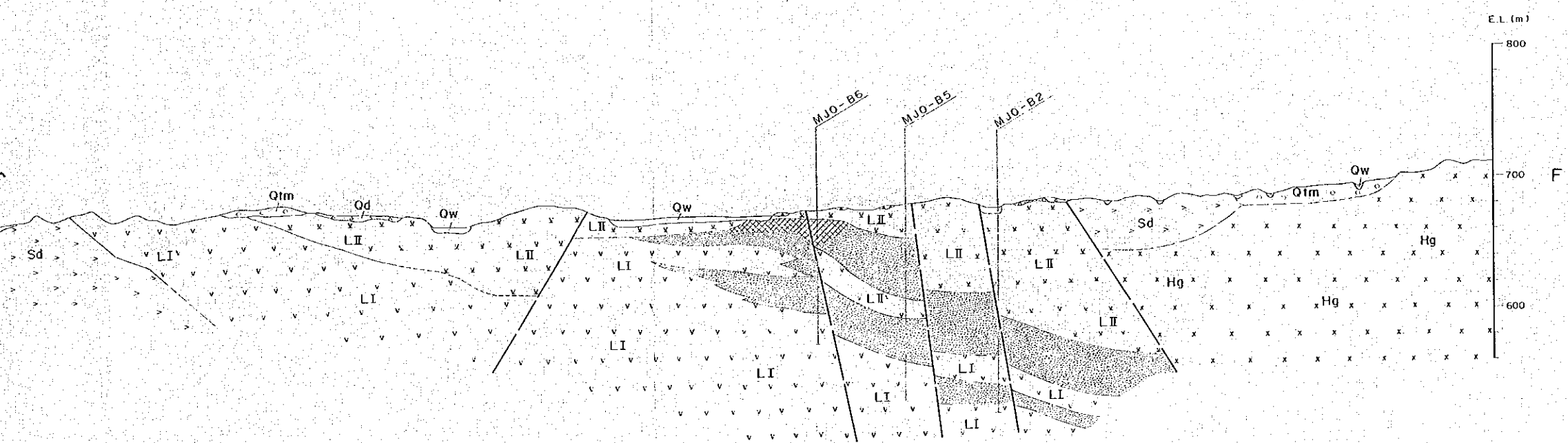
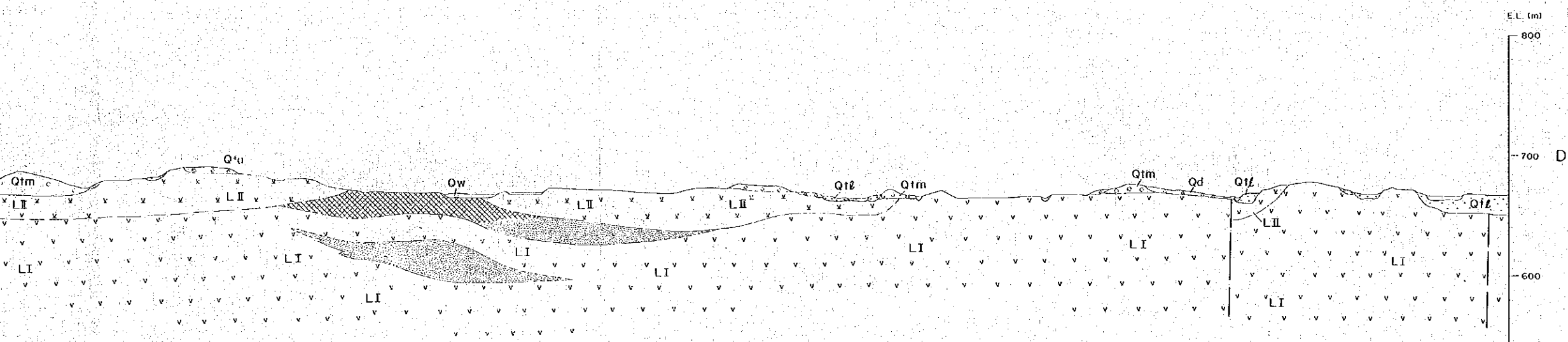
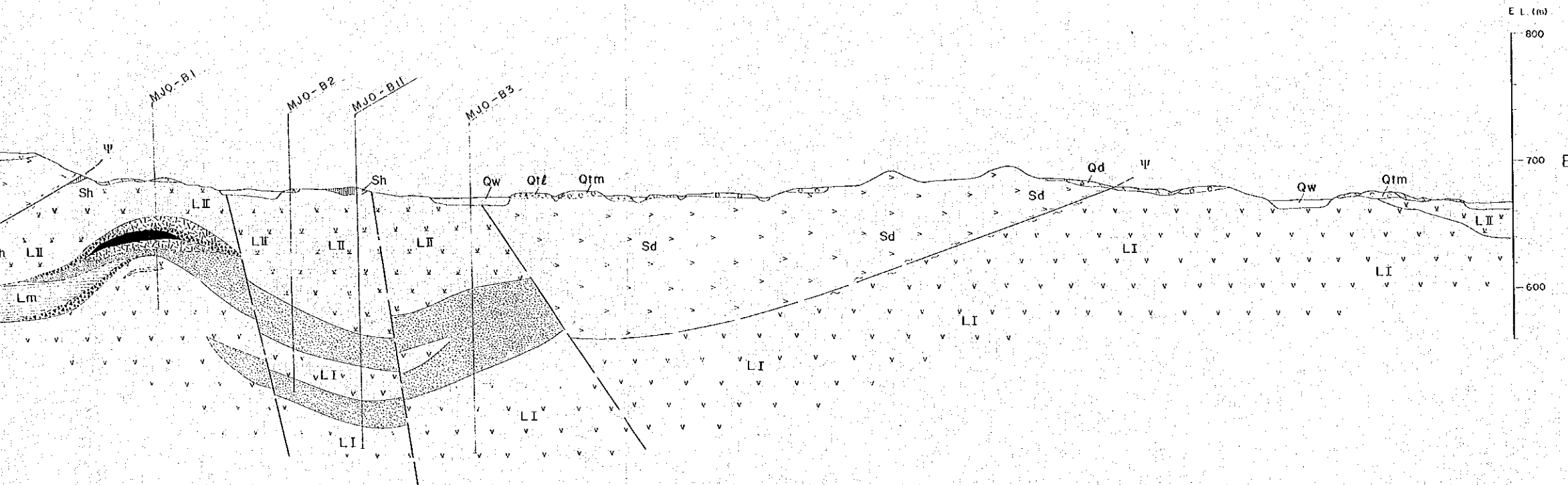
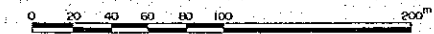
REPORT ON THE MINERAL EXPLORATION
IN
THE RAKAH AREA, SULTANATE OF OMAN

GEOLOGIC SECTIONS OF AREA B



JAPAN INTERNATIONAL COOPERATION AGENCY
METAL MINING AGENCY OF JAPAN
FEBRUARY, 1990

Scale 1 : 2,000

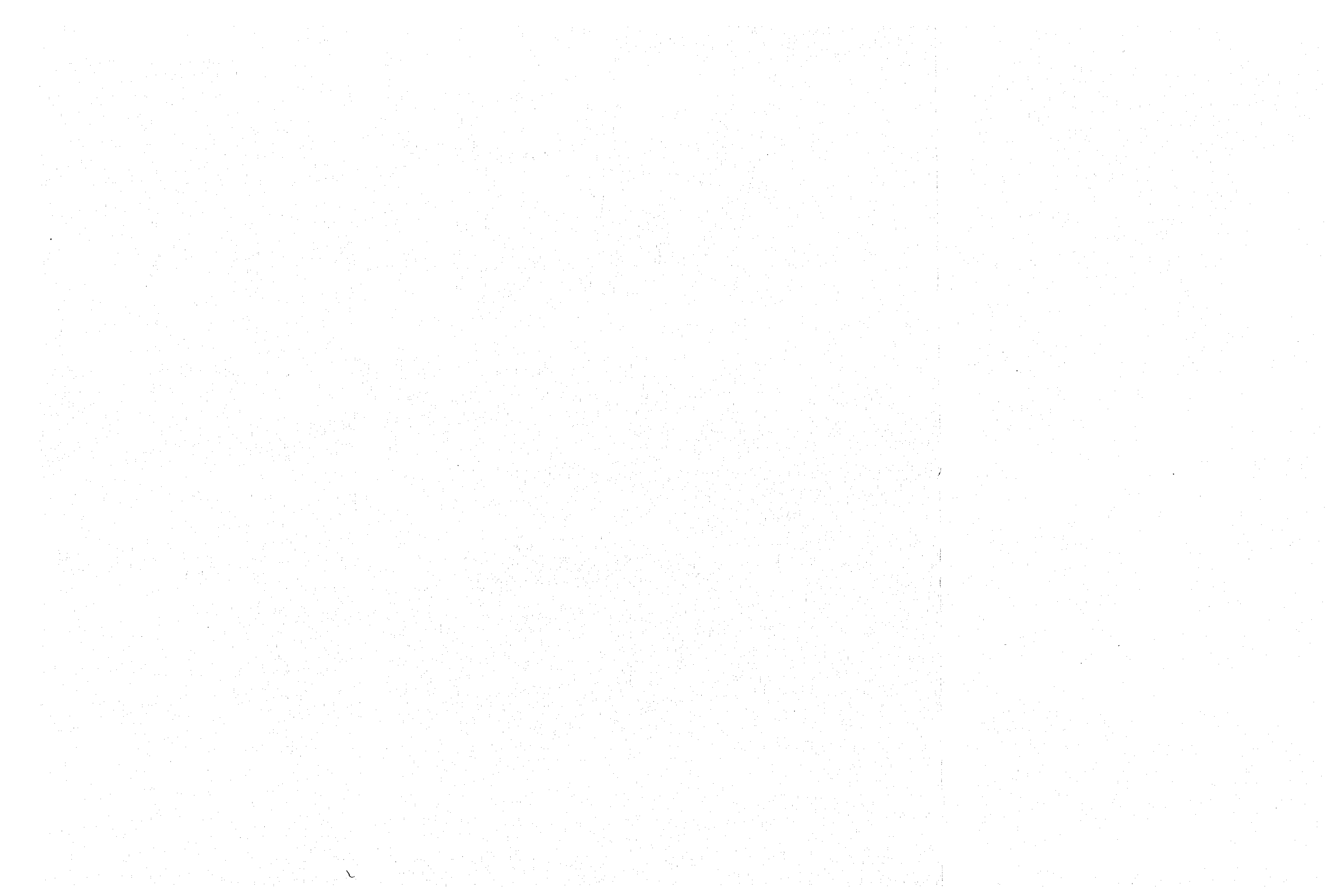


LEGEND

Quaternary	Wadi Sediments	Qw, Gravel, sand
	Debris	Qd, Talus breccia
Pleistocene	Terrace Deposits	Ql, Gravel, sand
		Qtm, Gravel, sand
		Qtu, Gravel, sand
Cretaceous - Paleogene	Suhaylah Formation	
	Small Volcanic Rocks	LI, Pillow and massive lavas
		LI, Metalliferous sediments
	Sheeted-dyke Complex	LI, Pillow lavas
		Sd, Sheeted dykes
	High-level Gabbro	Hg, High-level gabbro
	Cumulate Sequence	Cg, Cumulate layered gabbro
	Tectonites	Ht, Hornblende gabbro
	Intrusive Rocks	D, Dykes
	Mineralization	Gossanized zone
Siliceous ore zone		
Brecciated ore zone		
Massive ore zone		
Stockwork ore zone		

Structural Features:

- Contact
- Fault; dashed where inferred or concealed
- Thrust fault; saw-teeth, showing dip
- Shear zone
- Slag dump
- Drill hole



REPORT ON THE MINERAL EXPLORATION
IN THE RAICAH AREA, SULTANATE OF OMAN

FINAL REPORT

VOLUME II (MINE DEVELOPMENT)

FEBRUARY, 1990

1-00



JICA