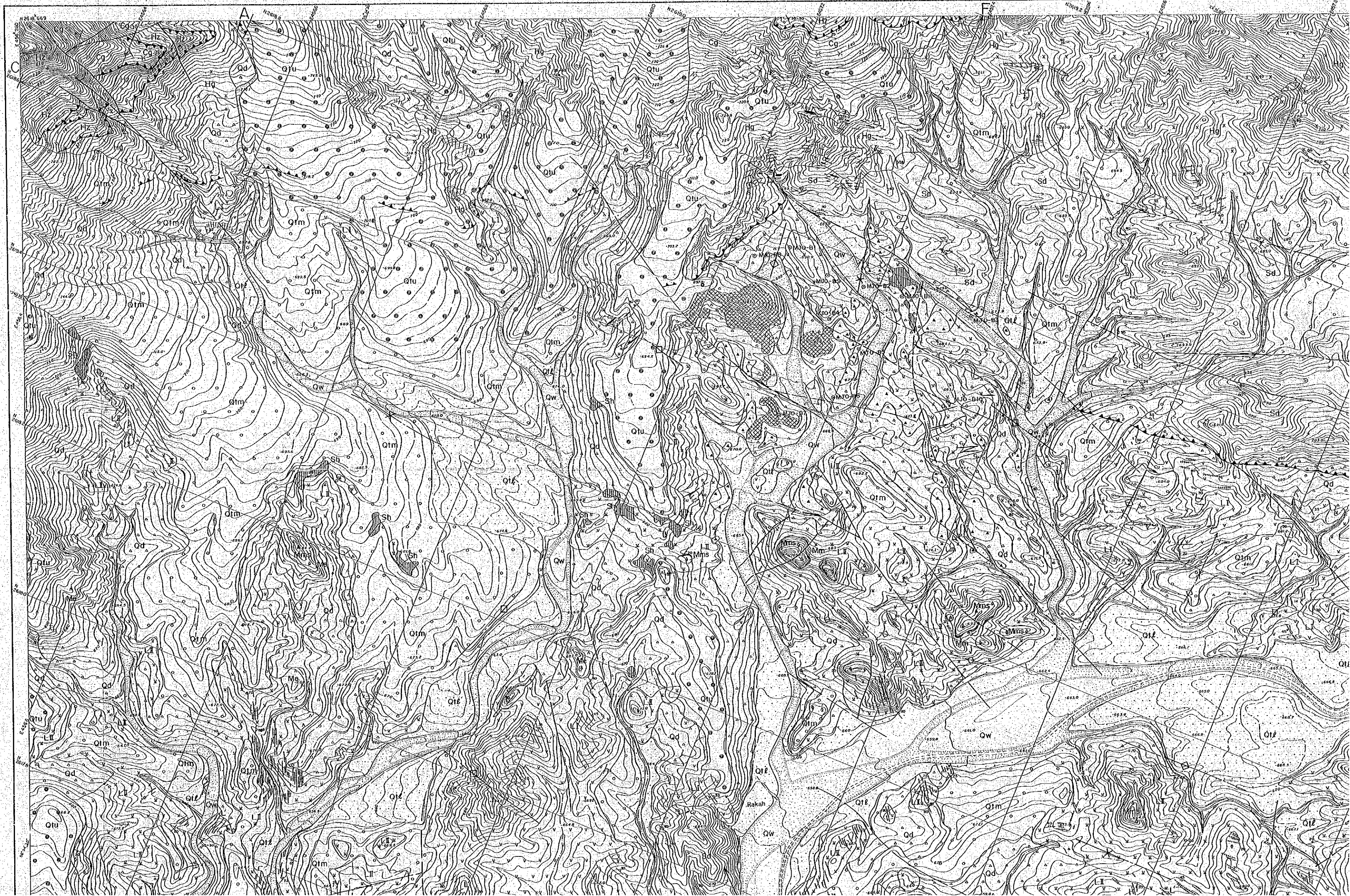
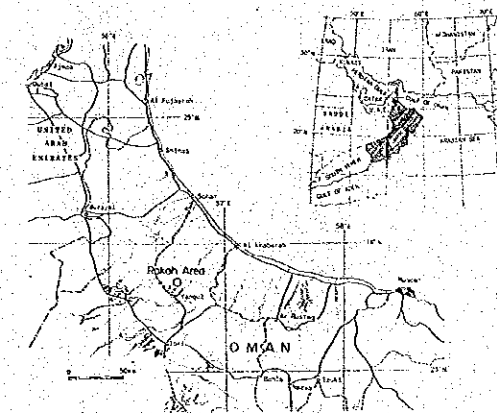


RAKAH B AREA

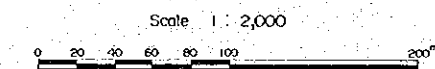


REPORT ON THE MINERAL EXPLORATION
IN
THE RAKAH AREA, SULTANATE OF OMAN

GEOLOGIC MAP OF AREA B



JAPAN INTERNATIONAL COOPERATION AGENCY
METAL MINING AGENCY OF JAPAN
FEBRUARY, 1990



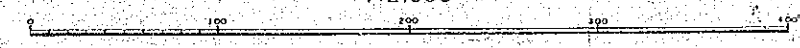
LEGEND

Quaternary	Holocene	Wadi Sediments	Qw	Gravel, sand		
		Debris	Qd	Talus breccia		
Pliocene	Superficial Deposits	Lower Terrace Deposits	Qtl	Gravel, sand		
		Middle Terrace Deposits	Qtm	Gravel, sand		
		Upper Terrace Deposits	Qtu	Gravel, sand		
Late Cretaceous	Supra-ophiolite Sediments	Hatishah Olistostrome	Ols	Olistolith of limestone		
			Och	Olistolith of chert		
			Sp	Serpentine		
			Sh	Chert		
Samail Nappe	Early to Middle Cretaceous	Sana'il Volcanic Rocks	Middle Volcanic Rocks	Me	Pillow lavas	
				Mms	Massive lavas	
				Mm	Metalliferous sediments	
			Lower Volcanic Rocks	Lower Extrusives II	LlI	Pillow and massive lavas
				Lower Extrusives I	Ll	Metalliferous sediments
					Ll	Pillow lavas
Intrusive Rocks		Sheeted dyke Complex	Sd	Sheeted dykes		
		High-level Gabbro	Hg	High-level gabbro		
		Cumulate Sequence	Cg	Cumulate layered gabbro		
		Teclenites	Hr	Harzburgite		
			D	Dykes		
			L	Late dykes		

Stratification, inclined	Fault, dashed where inferred or concealed
Stratification of pillow lavas, inclined	Thrust fault, saw-teeth, showing dip
Layering, inclined	Vein
Foliation, inclined	Qossan
Dyke, inclined	Drill hole
Shear zone	Slag dump
Contact	Section



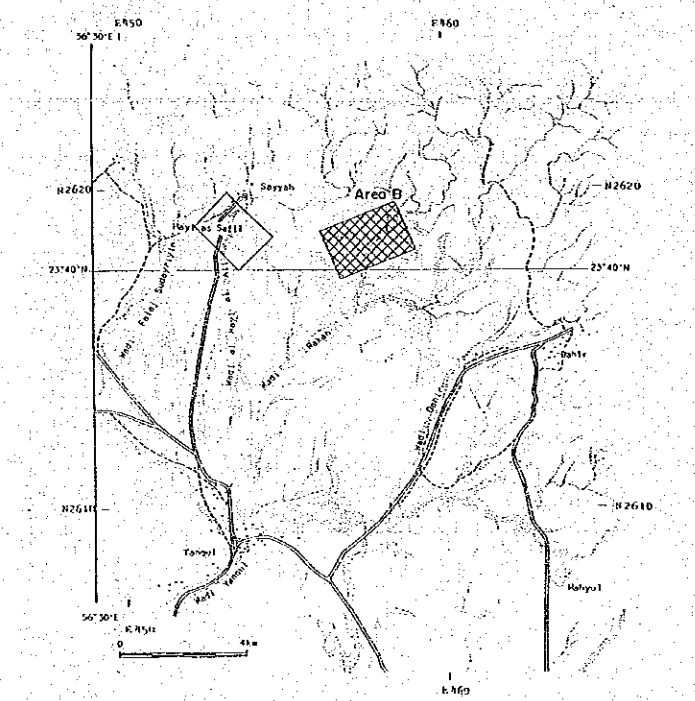
1:2,000

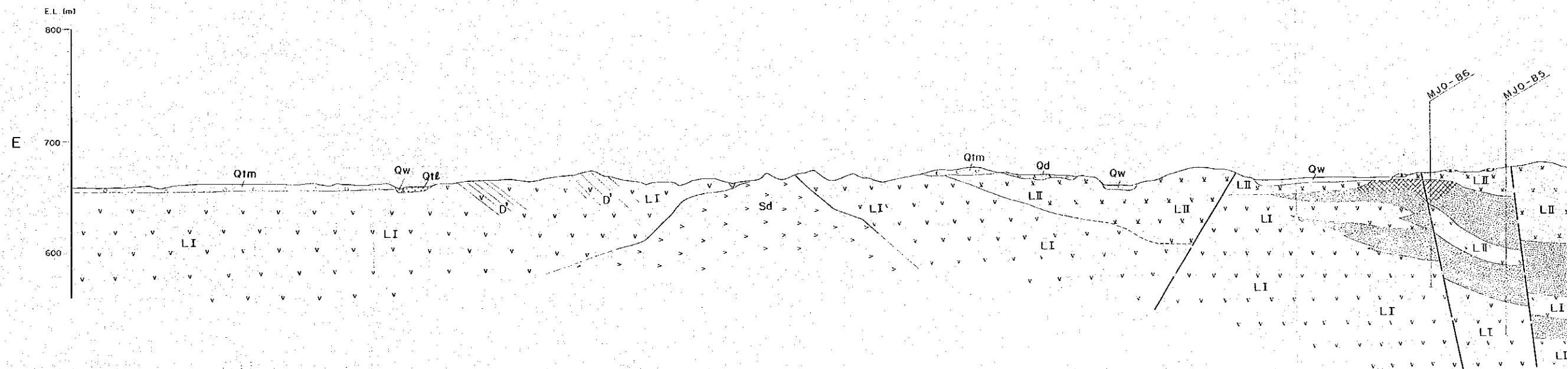
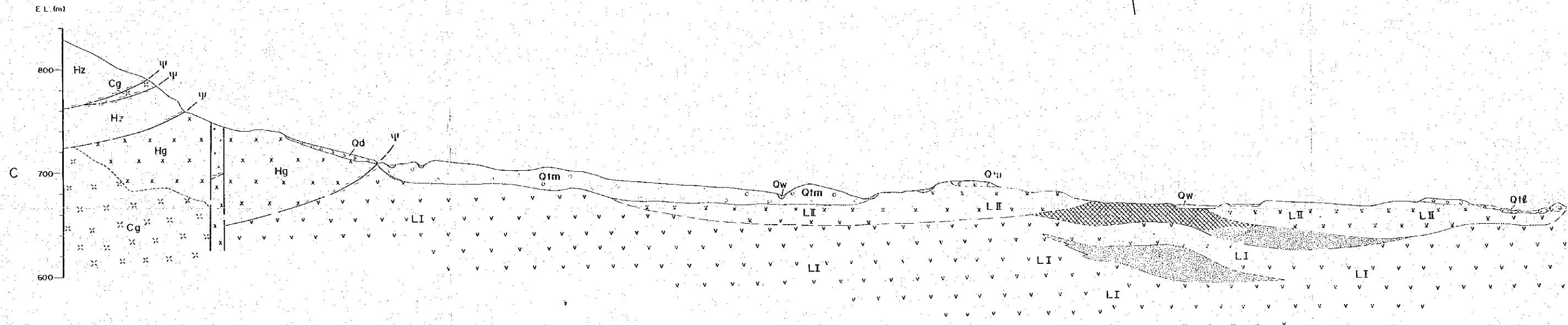
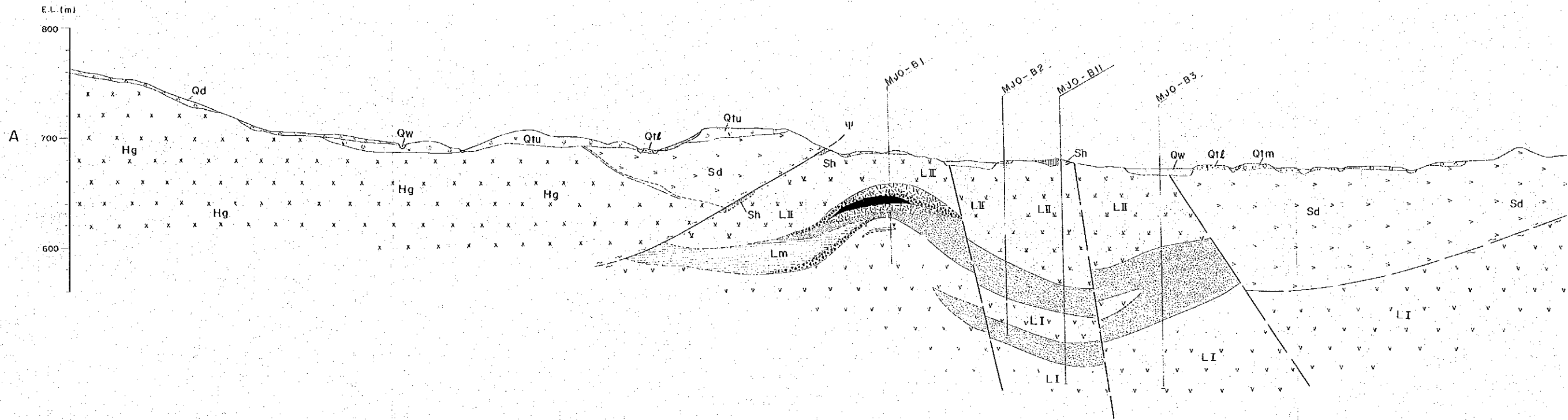




LEGEND

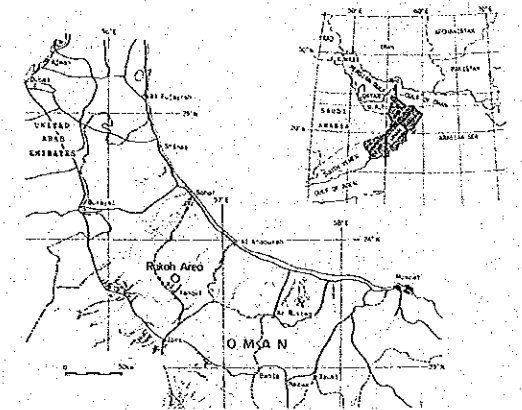
Quaternary	Wadi Sediments	Qv, Gravel, sand	Qv, Gravel, sand
	Debris	Qd, Talus breccia	Qd, Talus breccia
Pleistocene	Terrace Deposits	Lower Terrace Deposits	Qtl, Gravel, sand
		Middle Terrace Deposits	Qtm, Gravel, sand
		Upper Terrace Deposits	Qtu, Gravel, sand
Late Cretaceous	Suhaylah Formation	Olistostromes	Ols, Olistolith of limestone
			Och, Olistolith of chert
Samail Nappe	Samail Ophiolite	Sp, Serpentinite	Sp, Serpentinite
		Sb, Chert	Sb, Chert
		Me, Pillow lavas	Me, Pillow lavas
		Mms, Massive lavas	Mms, Massive lavas
		Mm, Metalliferous sediments	Mm, Metalliferous sediments
		LIII, Pillow and massive lavas	LIII, Pillow and massive lavas
		LII, Metalliferous sediments	LII, Metalliferous sediments
		LI, Pillow lavas	LI, Pillow lavas
		Ls, Sheeted dykes	Ls, Sheeted dykes
		Lg, High-level gabbro	Lg, High-level gabbro
		Cg, Cumulate layered gabbro	Cg, Cumulate layered gabbro
		Lz, Harzburgite	Lz, Harzburgite
Intrusive Rocks	D, Dykes	D, Dykes	
	L, Late dykes	L, Late dykes	
	Stratification; inclined	Fault; dashed where inferred or concealed	
	Stratification of pillow lavas; inclined	Thrust fault; saw-teeth, showing dip	
	Layering; inclined	Vein	
	Pollution; inclined	Gossan	
	Dyke; inclined	Drill hole	
	Shear zone	Slag dump	
	Contact	A — B Section	



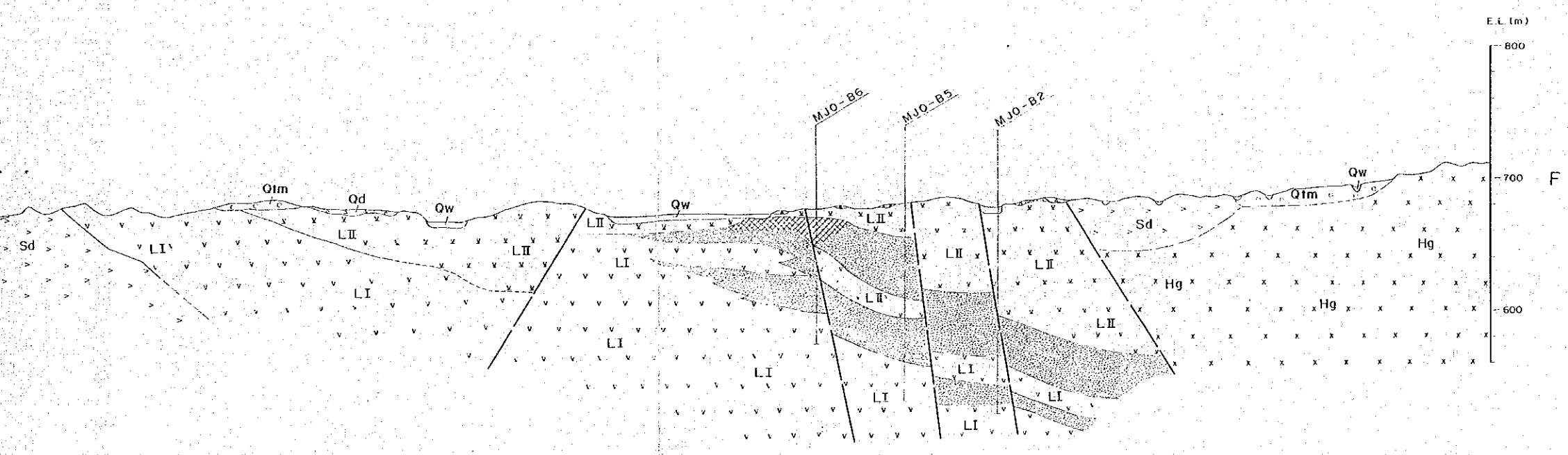
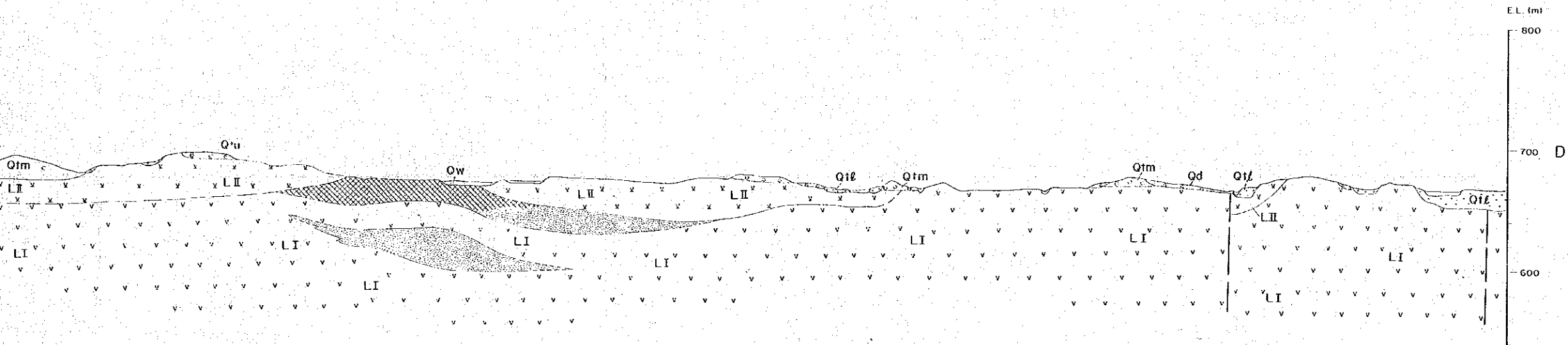
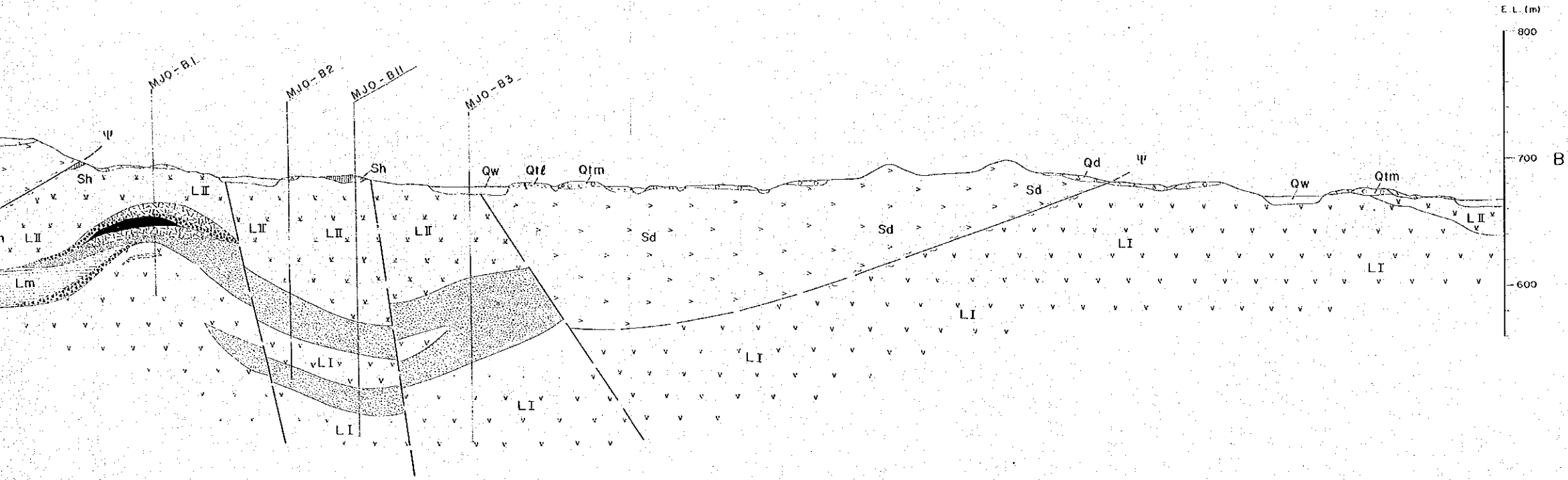
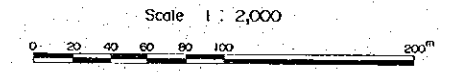


REPORT ON THE MINERAL EXPLORATION
IN
THE RAKAH AREA, SULTANATE OF OMAN

GEOLOGIC SECTIONS OF AREA B



JAPAN INTERNATIONAL COOPERATION AGENCY
METAL MINING AGENCY OF JAPAN
FEBRUARY, 1990



LEGEND

Quaternary	Wadi Sediments	Qw, Gravel, sand
	Debris	Qd, Talus breccia
Pleistocene	Terrace Deposits	Lower Terrace Deposits
		Middle Terrace Deposits
		Upper Terrace Deposits
Qtl, Gravel, sand		
Qtm, Gravel, sand		
Qtu, Gravel, sand		
Cenozoic	Suhaylah Formation	Sh, Chert
	Samail Volcanic Rocks	Lower Extrusives II
Lower Extrusives I		
Samail Ophiolite	Sheeted dyke Complex	Sd, Sheeted-dykes
	High-level Gabbro	Hg, High-level gabbro
Early to Middle Cretaceous	Cumulate Sequence	Cg, Cumulate layered gabbro
	Tectonites	Itz, Harzburgite
Intrusive Rocks	Dykes	D', Dykes

Mineralization

Contact	Gossanized zone
Fault; dashed where inferred or concealed	Siliceous ore zone
Thrust fault; saw teeth, showing dip	Brecciated ore zone
Shear zone	Massive ore zone
Slag dump	Stockwork ore zone
Drill hole	

