

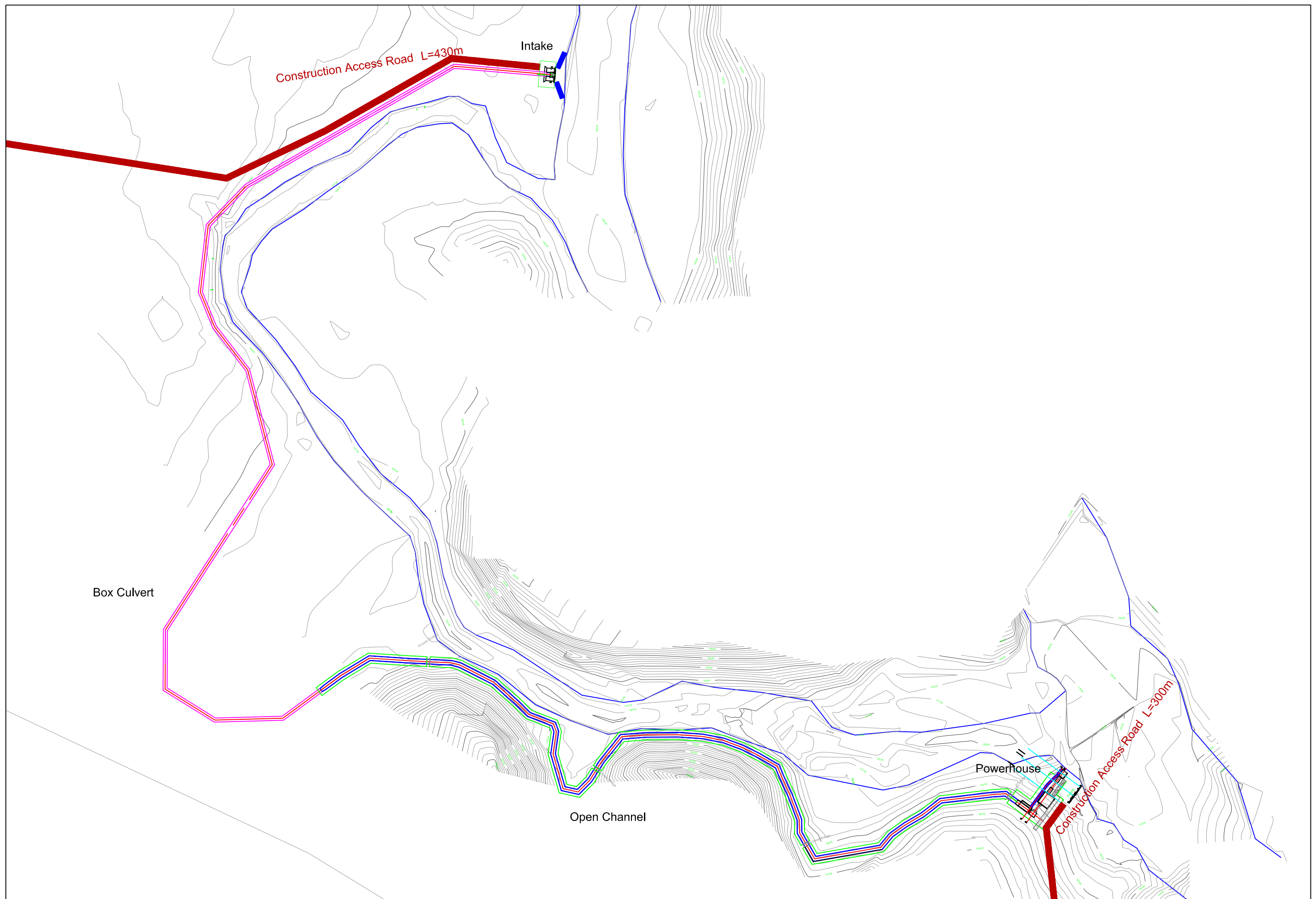
圖 面

図面リスト

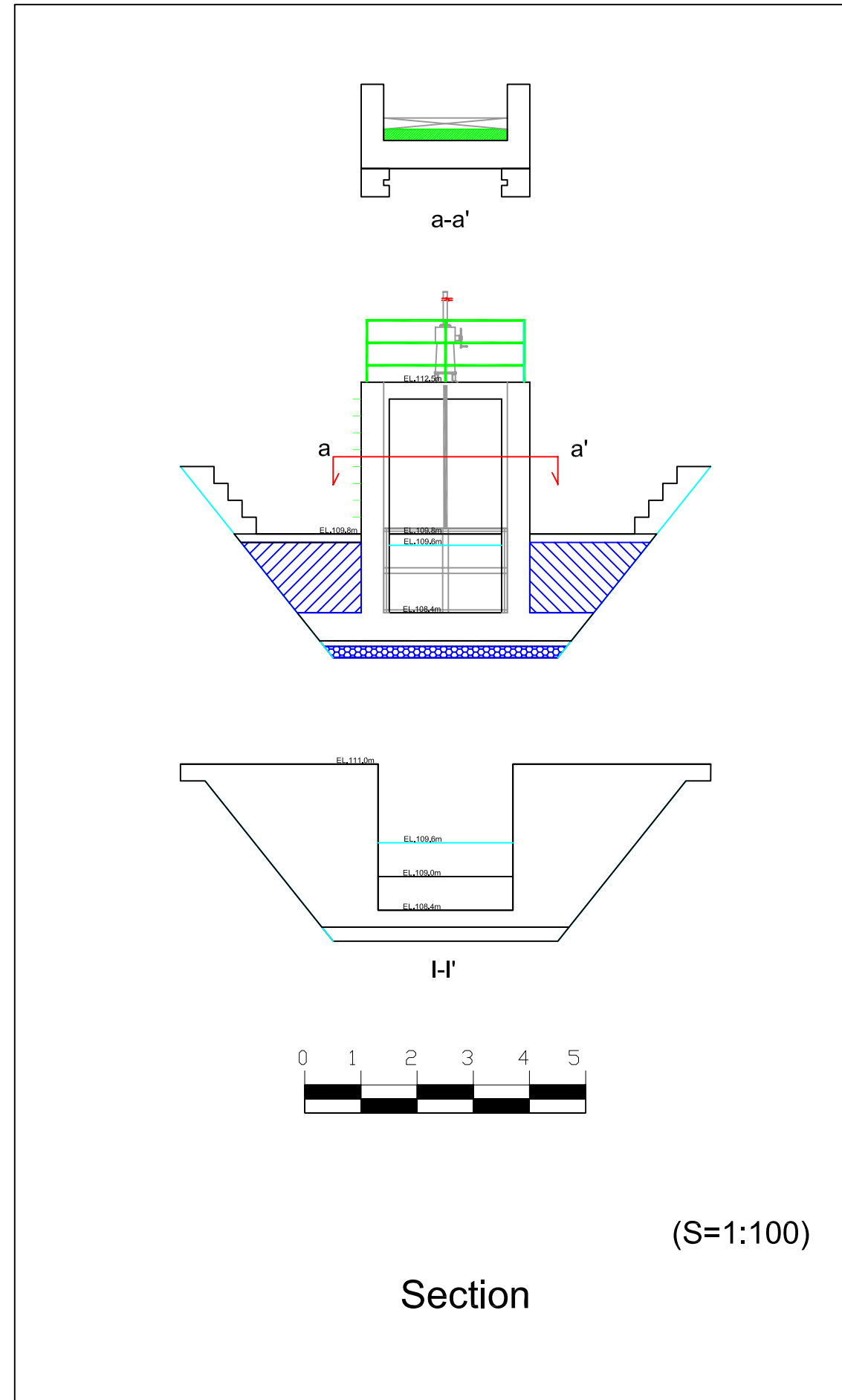
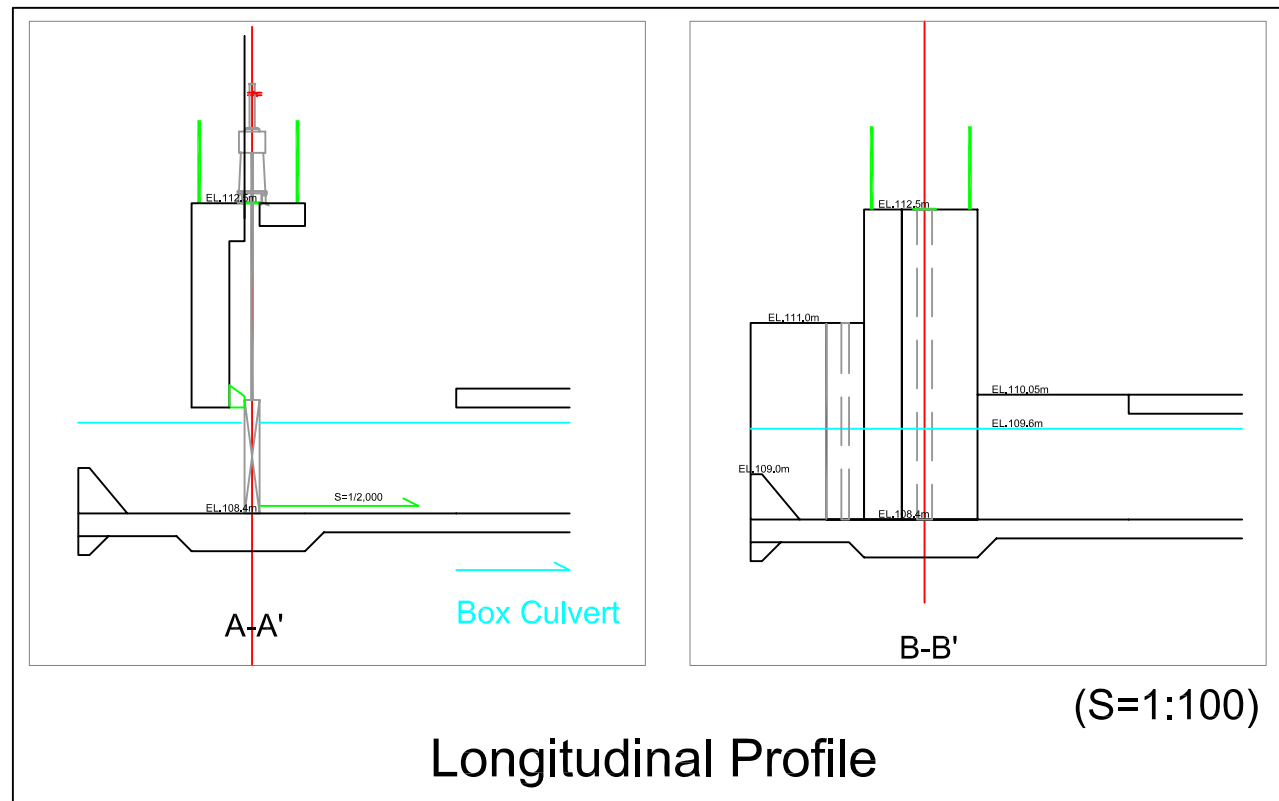
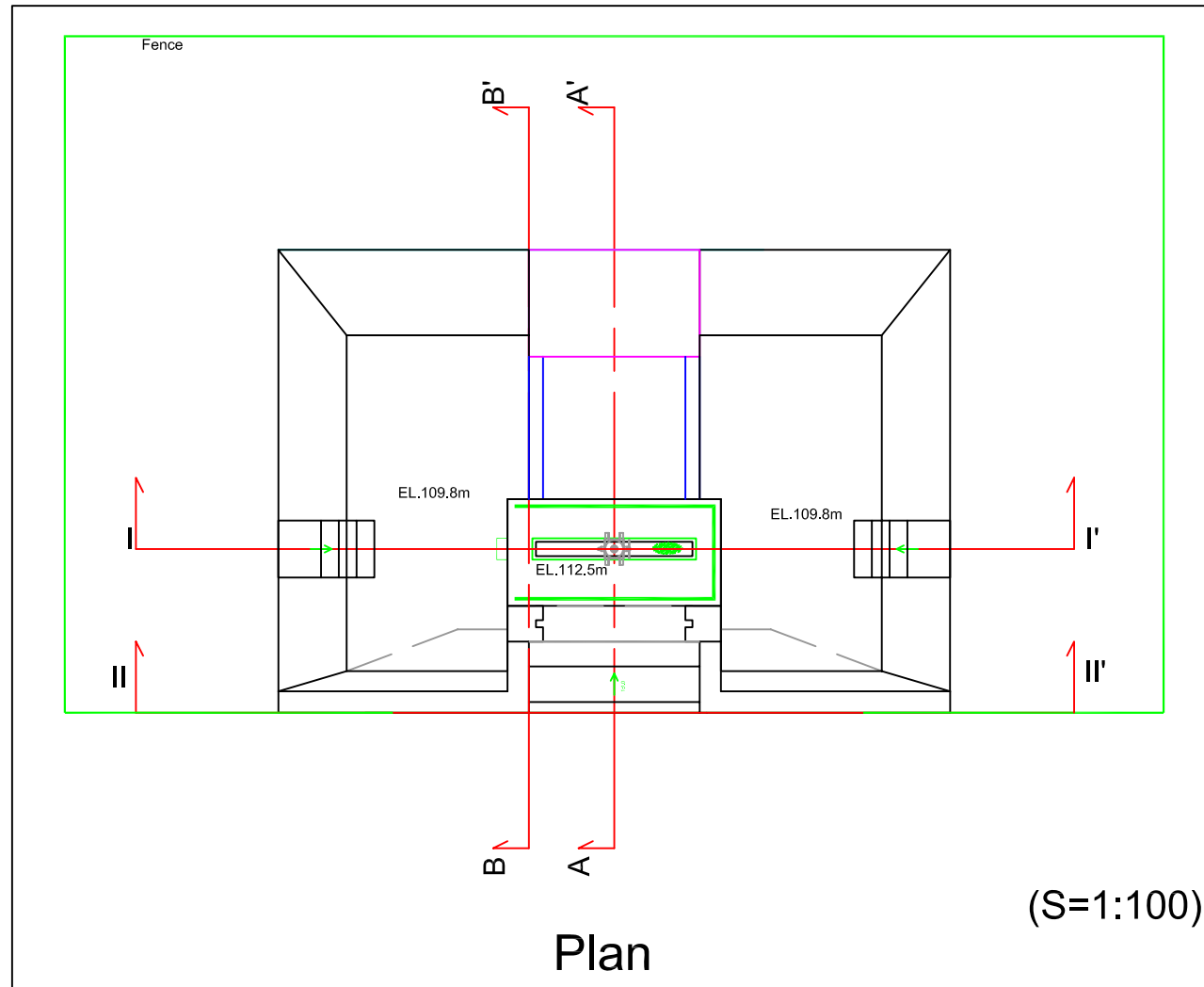
Draw. No.	Title
Las Conchas	
L-G-001	Las Conchas Micro Hydro Power Project Plan View
L-C-001	Las Conchas Micro Hydro Power Project Intake
L-C-002	Las Conchas Micro Hydro Power Project Water Way
L-C-003	Las Conchas Micro Hydro Power Project Head Tank and Powerhouse
L-E-001	Las Conchas Micro Hydro Power Project Layout Plan in the Powerhouse
L-E-002	Las Conchas I Micro Hydro Power Project Transmission Line Plan
L-E-003	Las Conchas Micro Hydro Power Project Transmission Single Line Diagram
Seasir	
S-G-001	Seasir Micro Hydro Power Project Plan View
S-C-001	Seasir Micro Hydro Power Project Intake Weir No.1
S-C-002	Seasir Micro Hydro Power Project Intake Weir No.2
S-C-003	Seasir Micro Hydro Power Project Intake Weir No.3
S-C-004	Seasir Micro Hydro Power Project Water Way
S-C-005	Seasir Micro Hydro Power Project Head Tank
S-C-006	Seasir Micro Hydro Power Project Powerhouse
S-C-007	Seasir Micro Hydro Power Project Outlet
S-E-001	Seasir Micro Hydro Power Project Layout Plan in the Powerhouse
S-E-002	Seasir Micro Hydro Power Project Transmission Line Plan
S-E-003	Seasir Micro Hydro Power Project Transmission Single Line Diagram

Draw. No.	Title
Jolom Ijix	
J-G-001	Jolom Ijix Micro Hydro Power Project Plan View
J-C-001	Jolom Ijix Micro Hydro Power Project Intake Weir
J-C-002	Jolom Ijix Micro Hydro Power Project Intake Weir- Stilling Basin
J-C-003	Jolom Ijix Micro Hydro Power Project Water Way
J-C-004	Jolom Ijix Micro Hydro Power Project Head Tank
J-C-005	Jolom Ijix Micro Hydro Power Project Powerhouse and Outlet
J-E-001	Jolom Ijix Micro Hydro Power Project Layout Plan in the Powerhouse
J-E-002	Jolom Ijix Micro Hydro Power Project Transmission Line Plan
J-E-003	Jolom Ijix Micro Hydro Power Project Transmission Single Line Diagram
Three Projects	
TP-E-001	Support Fitting Types for Single Phase
TP-E-002	Support Fitting Types for Two Phase
TP-E-003	Support Fitting Types for Three Phase

LAS CONCHAS



<p>JAPAN INTERNATIONAL COOPERATION AGENCY</p>	<p>PROJECT & LOCATION:</p>	<p>SHEET CONTENTS</p>	<p>DRAWING NO.</p>
	<p>Preparatory Survey on the Project for Promotion of Production Activities by Clean Energy in the North Villages The Republic of Guatemala</p>	<p>Las Conchas Micro Hydropower Project Plan View (Scale: 1:2,000)</p>	<p>L-G-001</p>

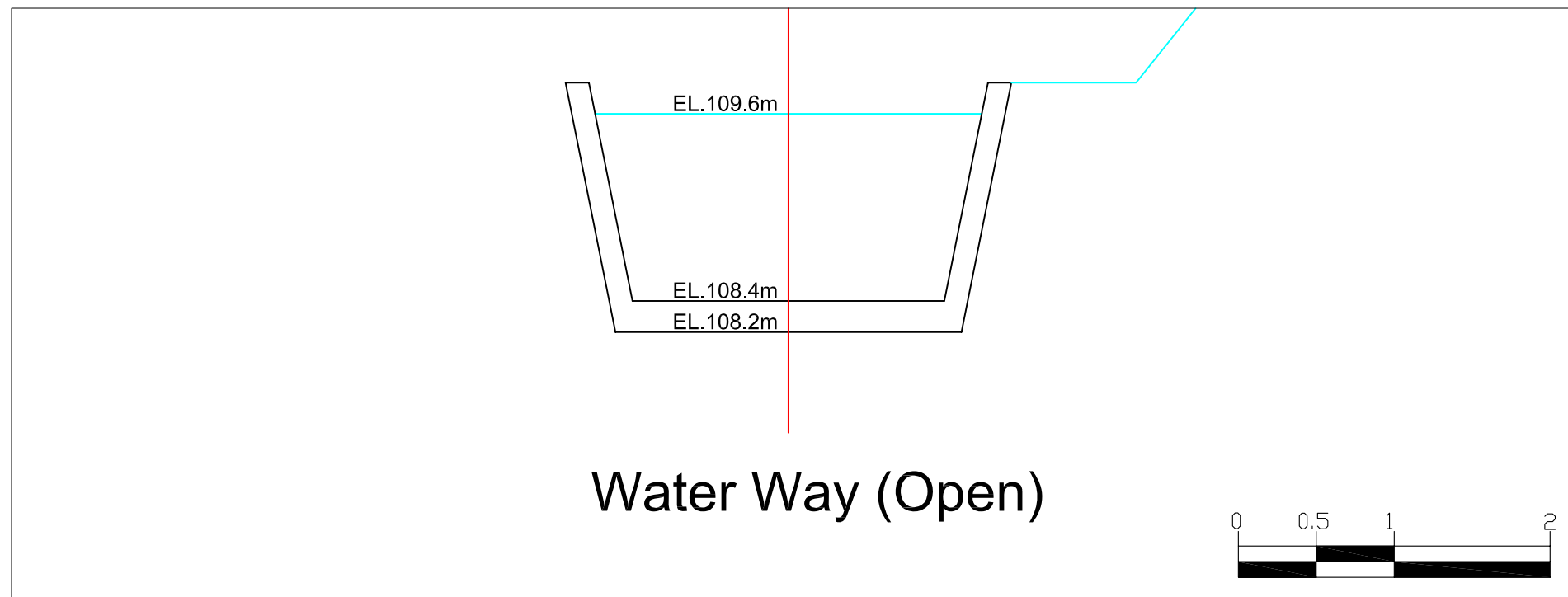
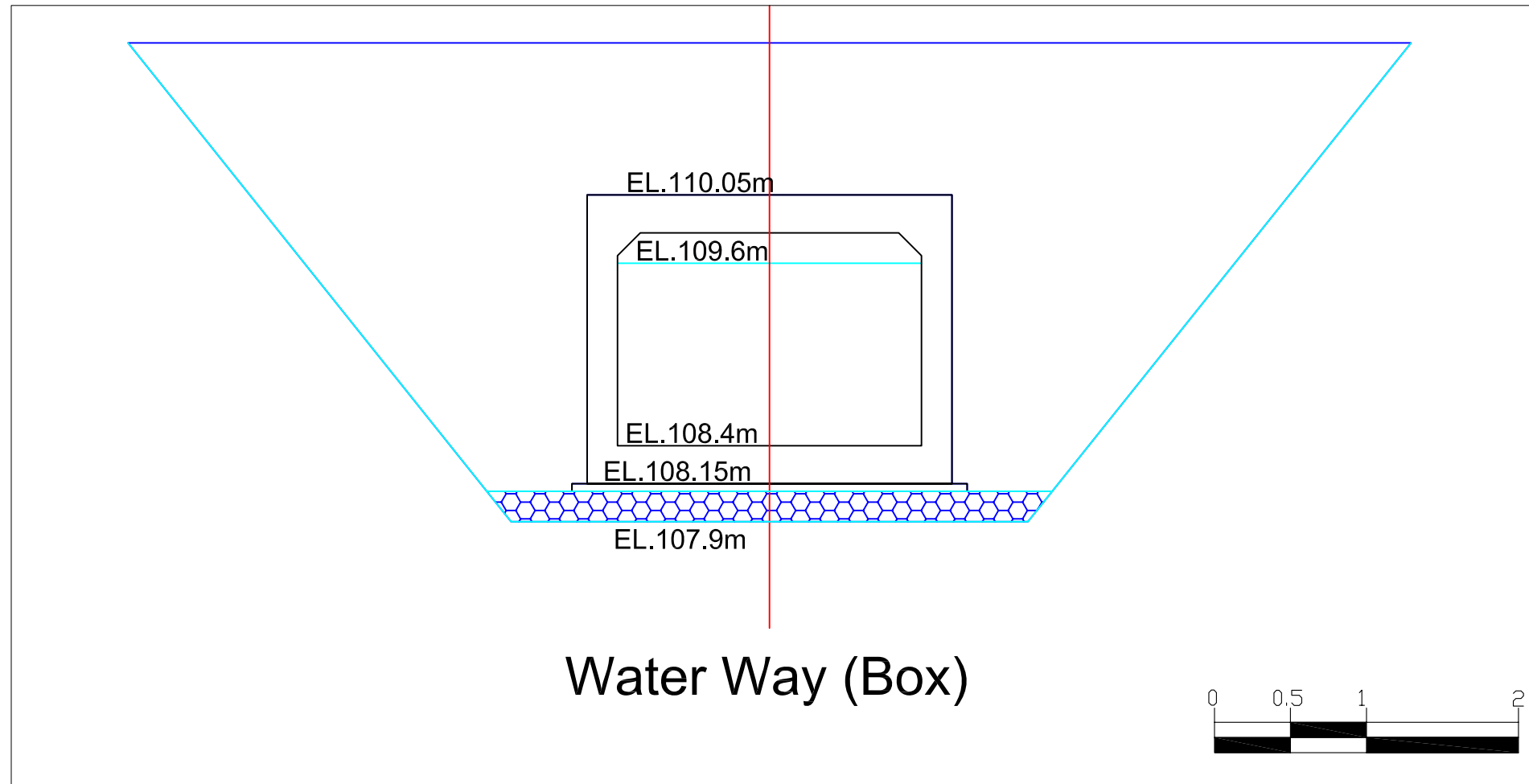


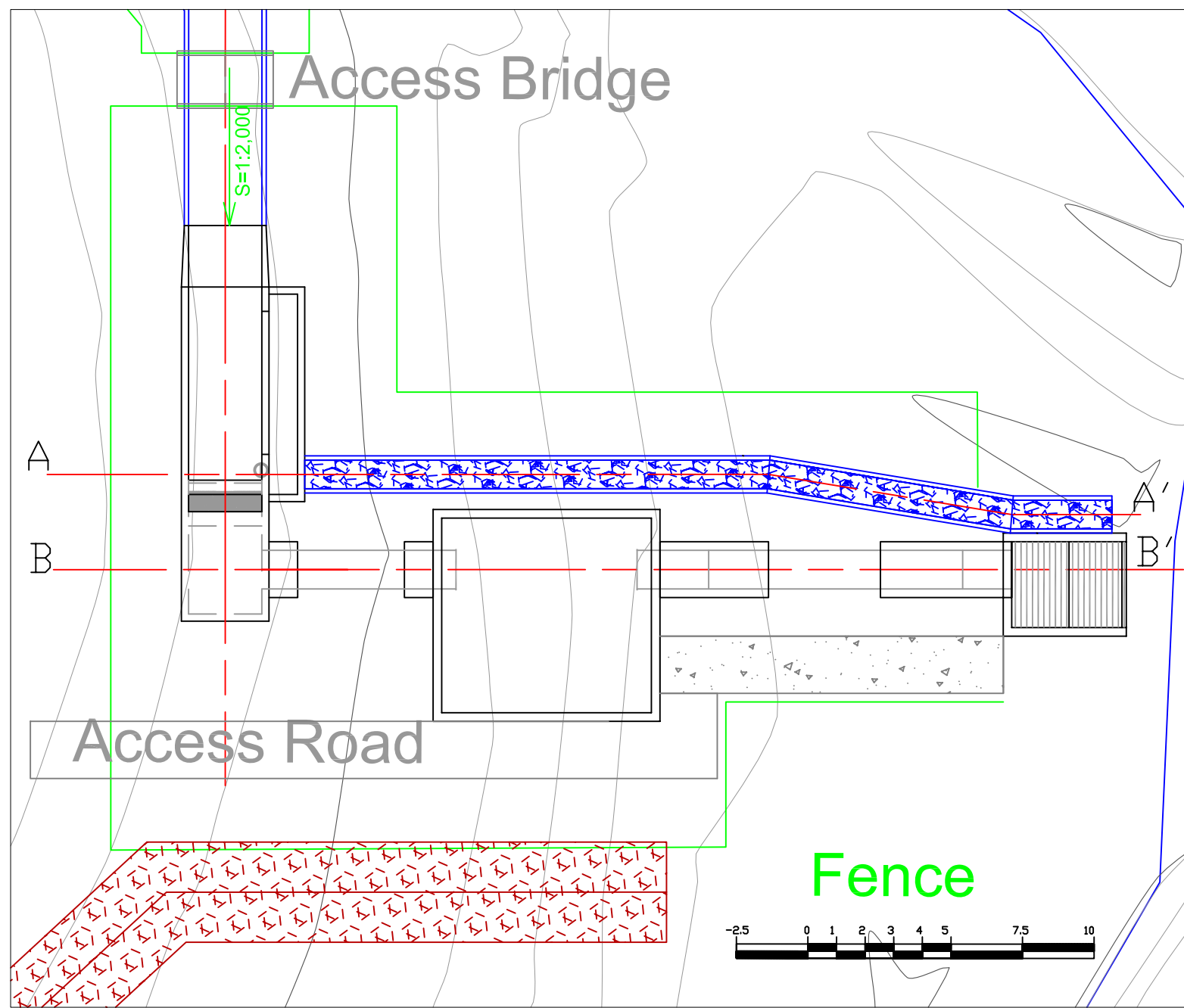
JAPAN INTERNATIONAL COOPERATION AGENCY

PROJECT & LOCATION:
Preparatory Survey on the Project for Promotion of
Production Activities by Clean Energy in the North Villages
The Republic of Guatemala

SHEET CONTENTS
Las Conchas Micro Hydropower Project
Intake
(Scale: As Drawing)

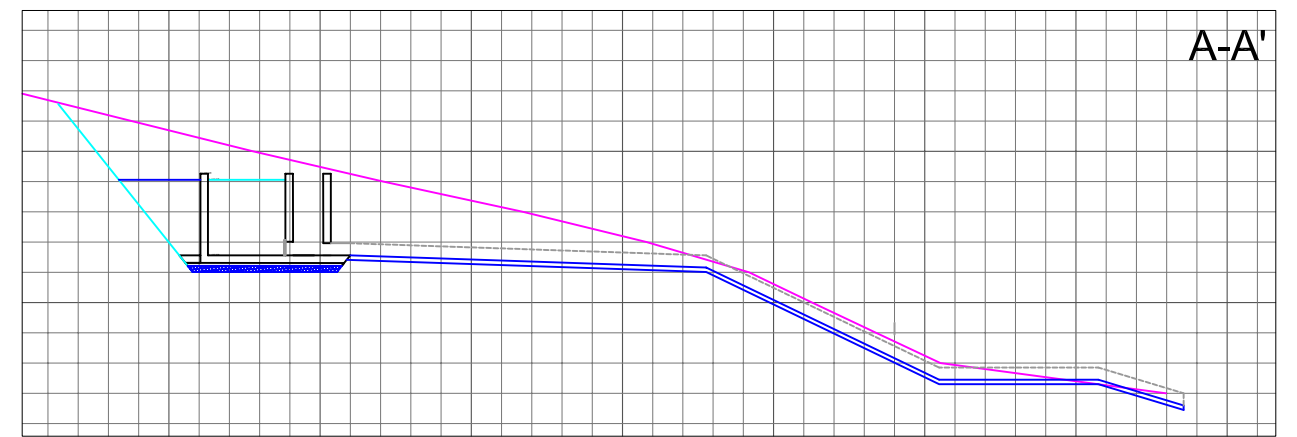
DRAWING NO.
L-C-001





Plan

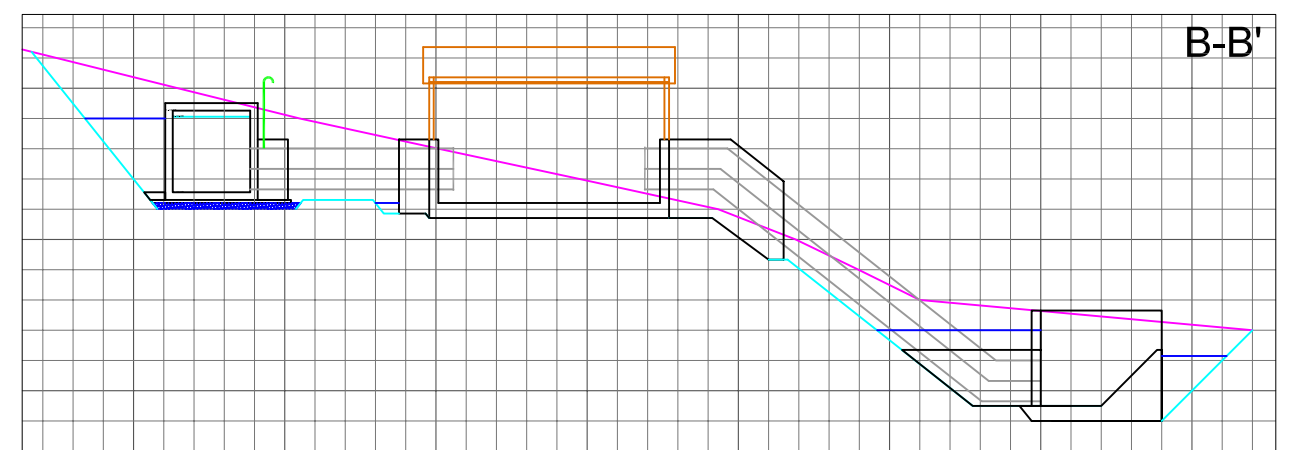
(S=1:200)



A-A'

(S=1:250)

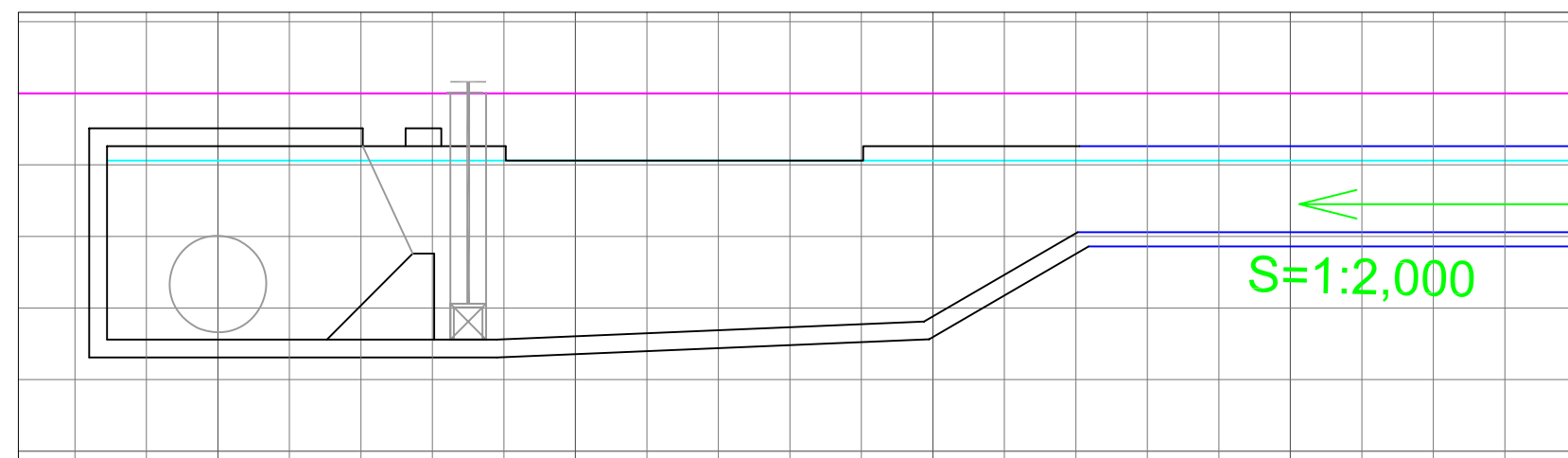
Section



B-B'

(S=1:250)

Section
(Head Tank - Powerhouse - Outlet)



Longitudinal Profile

(S=1:100)



JAPAN INTERNATIONAL COOPERATION AGENCY

PROJECT & LOCATION:

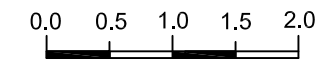
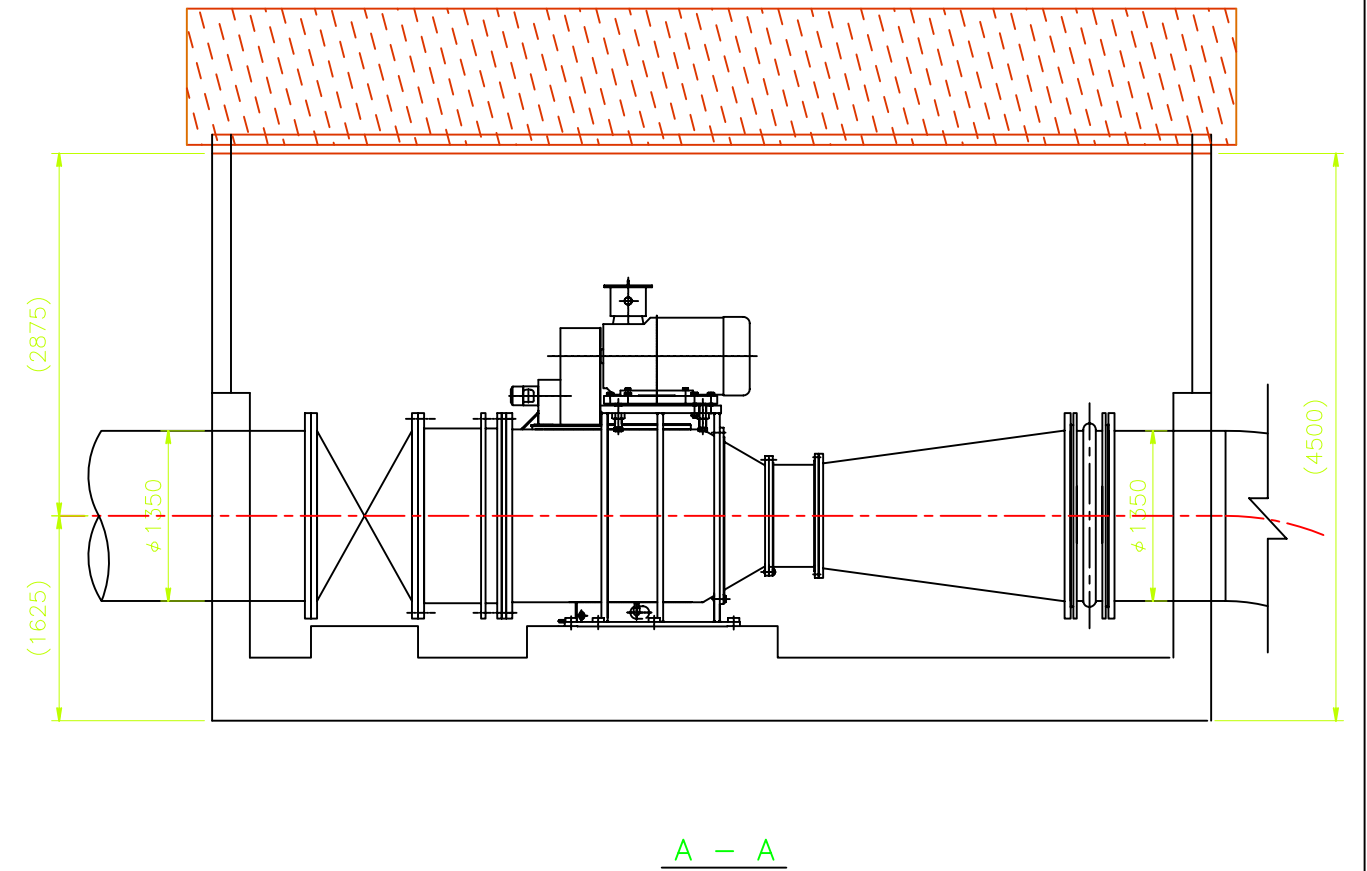
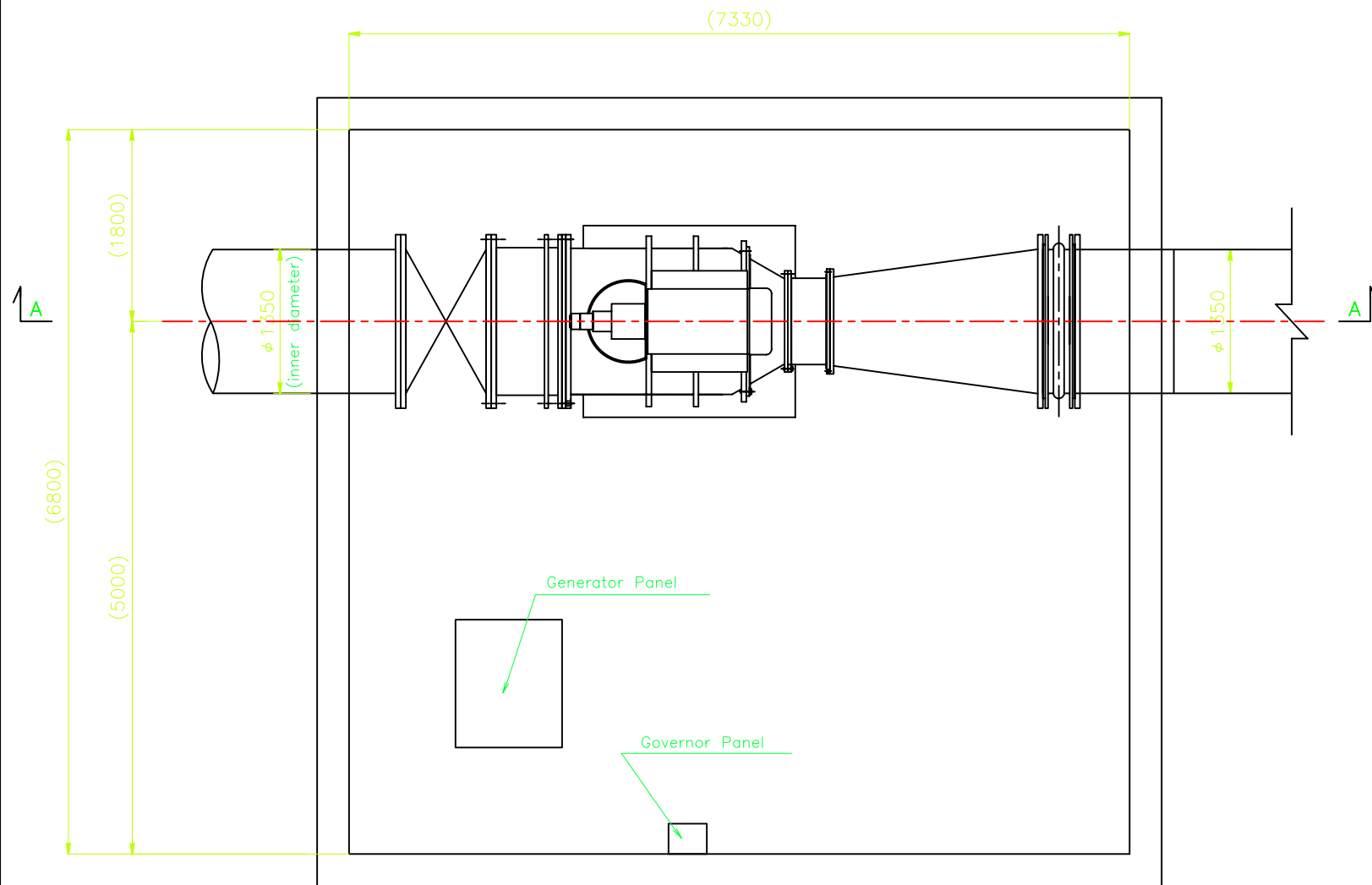
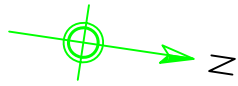
Preparatory Survey on the Project for Promotion of
Production Activities by Clean Energy in the North Villages
The Republic of Guatemala

SHEET CONTENTS

Las Conchas Micro Hydropower Project
Head Tank and Powerhouse
(Scale: As Drawing)

DRAWING NO.

L-C-003



	Turbine Discharge (m ³ /s)	Effective Head (m)	Speed (min ⁻¹)	Rated Capacity (kVA)
Las Conchas	2.5	5.8	600	120



JAPAN INTERNATIONAL COOPERATION AGENCY

PROJECT & LOCATION:

Preparatory Survey on the Project for Promotion of
Production Activities by Clean Energy in the North Villages
The Republic of Guatemala

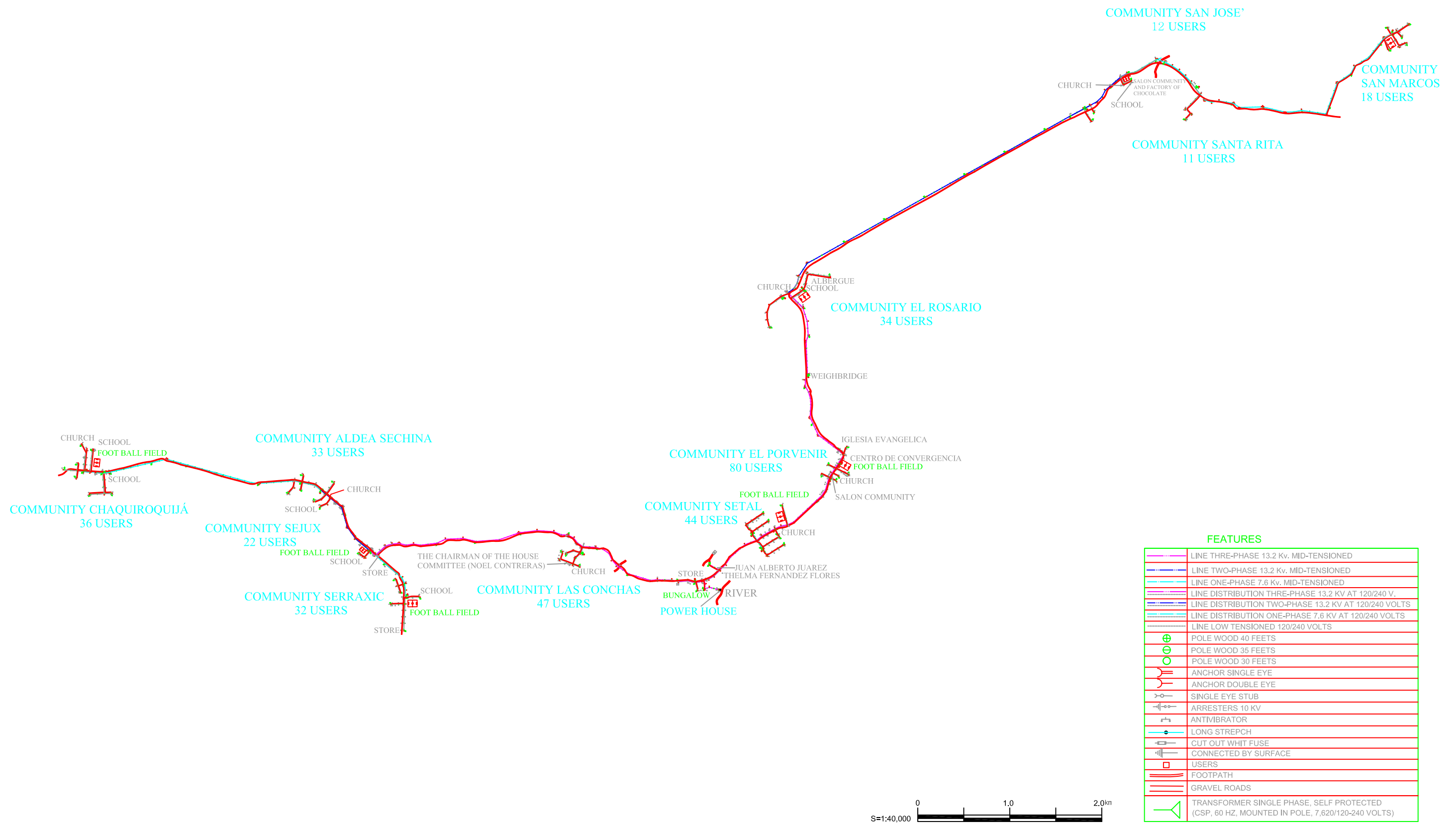
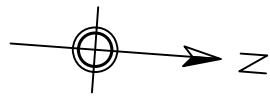
SHEET CONTENTS

Las Conchas Micro Hydro power
Project Layout Plan in the powerhouse

DRAWING NO.

L-E-001

(S=1:60)



FEATURES

	LINE THREE-PHASE 13.2 Kv. MID-TENSIONED
	LINE TWO-PHASE 13.2 Kv. MID-TENSIONED
	LINE ONE-PHASE 7.6 Kv. MID-TENSIONED
	LINE DISTRIBUTION THREE-PHASE 13.2 KV AT 120/240 V.
	LINE DISTRIBUTION TWO-PHASE 13.2 KV AT 120/240 VOLTS
	LINE DISTRIBUTION ONE-PHASE 7.6 KV AT 120/240 VOLTS
	LINE LOW TENSIONED 120/240 VOLTS
	POLE WOOD 40 FEETS
	POLE WOOD 35 FEETS
	POLE WOOD 30 FEETS
	ANCHOR SINGLE EYE
	ANCHOR DOUBLE EYE
	SINGLE EYE STUB
	ARRESTERS 10 KV
	ANTIVIBRATOR
	LONG STREPCH
	CUT OUT WHIT FUSE
	CONNECTED BY SURFACE
	USERS
	FOOTPATH
	GRAVEL ROADS
	TRANSFORMER SINGLE PHASE, SELF PROTECTED (CSP, 60 HZ, MOUNTED IN POLE, 7,620/120-240 VOLTS)



JAPAN INTERNATIONAL COOPERATION AGENCY

PROJECT & LOCATION:

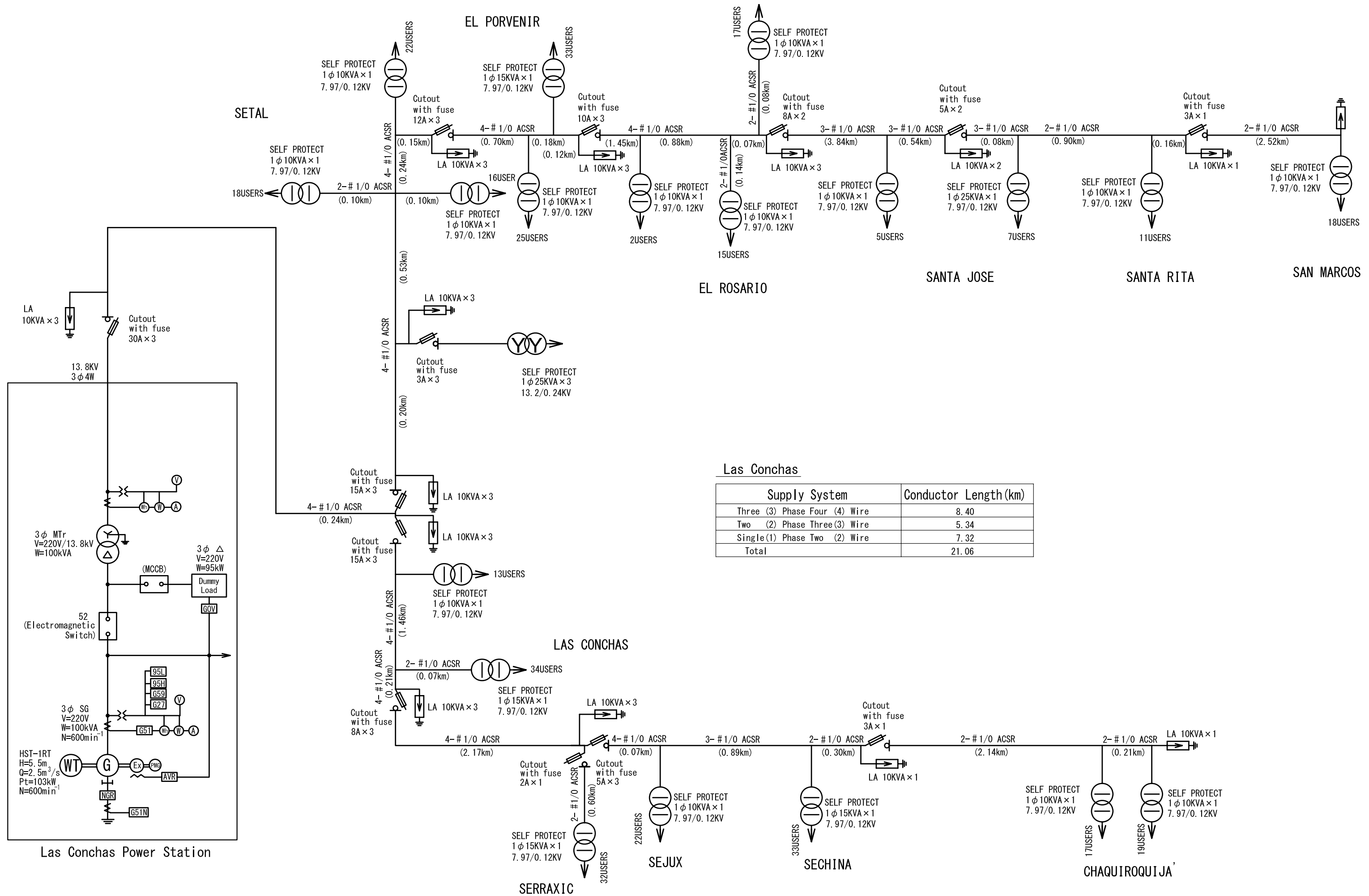
Preparatory Survey on the Project for Promotion of Production Activities by Clean Energy in the North Villages The Republic of Guatemala

SHEET CONTENTS

Las Conchas Micro Hydropower Project
Transmission Line Plan
(Scale: 1:40,000)

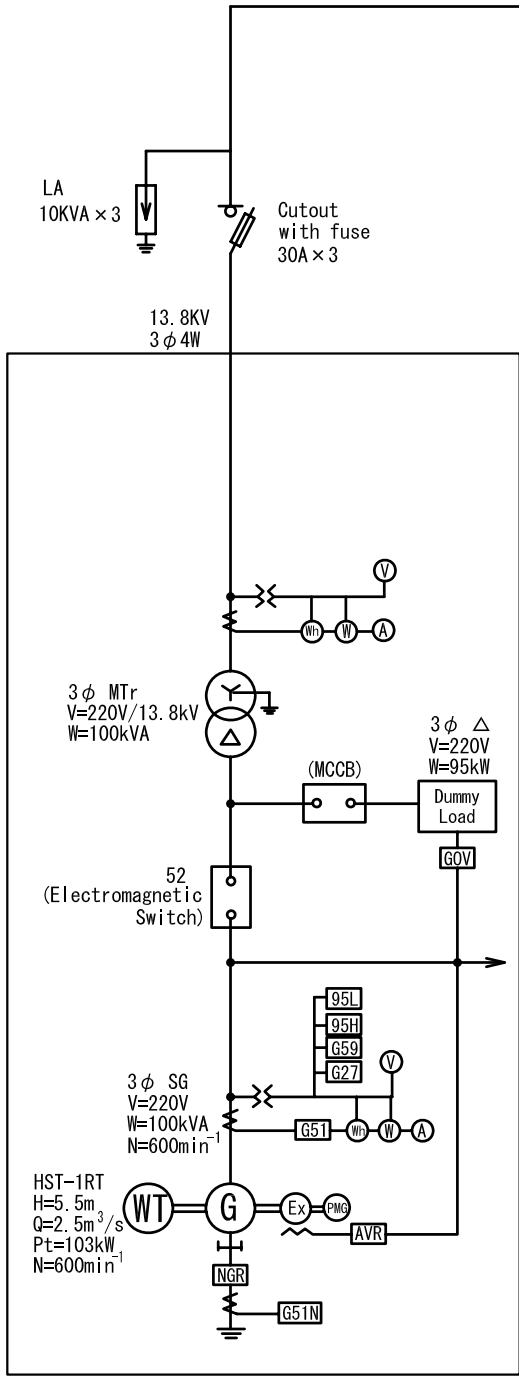
DRAWING NO.

L-E-002



Las Conchas

Supply System	Conductor Length (km)
Three (3) Phase Four (4) Wire	8.40
Two (2) Phase Three (3) Wire	5.34
Single (1) Phase Two (2) Wire	7.32
Total	21.06



Las Conchas Power Station

