

Japan International Cooperation Agency (JICA)
Ministry of Industry, Mines and Energy (MIME)
Electricity Authority of Cambodia (EAC)
Kingdom of Cambodia

GLOSSARY
FOR
SPECIFIC REQUIREMENTS
OF
ELECTRIC POWER
TECHNICAL STANDARDS
FOR
HYDROPOWER FACILITIES
(DRAFT)

October 2009

Electric Power Development Co., Ltd.
Tokyo, Japan
The Chugoku Electric Power Co., Inc.
Hiroshima, Japan

Table of Contents

Part 1 Civil Structures and Hydromechanical Equipment

Air Intrusion.....	1
Allowable Compressive Stress	1
Allowable Tensile Stress.....	1
Anchor Block.....	1
Area Affected by River Diversion	1
Back-up Device.....	2
Buoyancy	2
Check Dam	2
Circular Arc Method.....	2
Coefficient of Permeability.....	3
Compressive Strength.....	3
Contraction Joint.....	3
Cracking.....	3
Dam.....	3
Design Flood.....	3
Discharge facility	3
Drainage Hole	3
Dredging	3
Dynamic Analysis.....	4
Earth Pressure	4
Earth-Embedded type (Penstock)	4
Embankment Material.....	4
Emergency Inspection.....	4
Exceedance Probability.....	5
Exposed type (Penstock).....	5
External water pressure.....	5
Fault	5
Flood.....	5
Flood Water Level.....	6
Flushing	6
Force Caused by Wind.....	6
Freeboard	6
Gallery	7
Gate.....	7
Geologic Investigation.....	7

Grouting	7
Head Tank	7
Headrace (Headrace Waterway).....	7
Hoisted Gate Leaf	8
Homogenous Fill Dam.....	8
Hydraulic Gradient	8
Hydraulic Model Test	8
Hydrodynamic Pressure	9
Hydrostatic Pressure	9
Impervious Material.....	9
Impounding.....	9
In-situ Test	9
Intake	9
Intake Weir.....	10
Internal Friction Coefficient (Angle).....	10
ISO.....	10
Landslide.....	10
Liquefaction.....	10
Load Rejection.....	10
Low Water Level.....	10
Modulus of Deformation	10
Mud Pressure	10
Non-overflow Section.....	11
Normal High Water Level.....	11
Outlet	11
Overflowing Water Surface	11
Overtopping.....	11
Overturning.....	11
Penstock	11
Permeability Test	11
Pervious Material.....	11
Poisson's Ratio	11
Pore Pressure	11
Power-drive Device	12
Powerhouse.....	12
Pressure Conduit.....	12
Probable Maximum Flood (PMF).....	12
Proportioning Strength.....	12

Rapid Drawdown	12
Re-regulation Pond	12
Reservoir	12
Rock-Embedded type (Penstock).....	13
Saddle	13
Sand Flushing Gate.....	13
Screen Bar.....	13
Sedimentation	13
Seepage Failure.....	13
Seepage Line.....	14
Seismic Coefficient.....	14
Seismic Force.....	14
Self-weight.....	14
Semi-pervious Material.....	14
Settlement	14
Settling Basin.....	15
Shear Strength.....	15
Sliding.....	15
Solidifying	15
Spillway	15
Spillway Gate.....	16
Static Analysis.....	16
Stop Log.....	17
Storage Effect.....	17
Strength Test	17
Surcharge Load	17
Surface Diaphragm Type Fill Dam	17
Surge Tank	17
Surging.....	18
Tailrace (Tailrace Waterway)	18
Tailrace Bay	18
Temperature load	18
Temporary Facilities for Construction	18
Transverse Joint	19
Trash Rake	19
Uplift.....	19
Valve	19
Water Hammer Pressure	19

Waterstop	19
Water-tightness	20
Waterway	20
Weak Stratum.....	20
Zoned Type Fill Dam.....	20
Fig. 1 Reservoir Type.....	21
Fig. 2 Run-of-river Type.....	21

Part 2 Electrical Facilities

1. General Terms

Telecommunication Equipment for Electric Power System	22
Load Dispatching Center	22

2. Physics Terms

Capacitance.....	22
Electrical Conductivity	22
Electromagnetic Induction.....	22
Electrostatic Induction	22
Illuminance	22
Power Factor.....	22
Reactive Power	23

3. Mechanical Terms

Bypass Valve.....	23
Compressed Air Supply System	23
Counter Weight	23
Counter Weight Closing Device	23
Deflector of Pelton Turbine	23
Francis Turbine	23
Guide Vane.....	24
Pressure Oil Supply System.....	24
Kaplan Turbine	24
Inlet Valve.....	24
Maximum Momentary Pressure.....	25
Momentary Pressure Variation.....	25
Needle of Pelton Turbine	25
Pelton Turbine.....	25
Safety Valve	26
Self Closing Tendency of Guide Vanes or Main Inlet Valve.....	26

Steady State Runaway Speed.....	26
Turbine.....	26
4. Electrical Terms	
Automatic Voltage Regulator (AVR).....	26
Battery.....	26
Bus-bar.....	26
Capacitor Voltage Transformer (CVT).....	26
Circuit Breaker.....	27
Contact Preventing Plate.....	27
Current Transformer (CT).....	27
Dielectric Breakdown.....	27
Dielectric Strength.....	27
Disconnecting Switch.....	27
Earth Fault.....	27
Earth Fault Circuit Breaker.....	28
Enclosed Fuse.....	28
Expulsion Fuse.....	28
Fuel Cell.....	28
Gas Insulated Equipment.....	28
Generator.....	28
Ground or Earth.....	28
Idle Winding.....	28
Induction Motor.....	28
Instrument Transformers.....	28
Insulation Oil.....	28
Insulation Level.....	29
Insulation Resistance.....	29
Isolated-Phase Bus (IPB).....	29
Leakage Current.....	29
Lightning Impulse Voltage.....	29
Lightning Surge.....	29
LIWL (Lightning Impulse Withstand Voltage).....	29
Neutral Point of Transformer.....	29
On-Load Tap Changer (OLTC).....	29
Over-current.....	29
Over-current Protective Device.....	30
Overload Protective Device.....	30
Polychlorinated Biphenyl (PCB).....	30

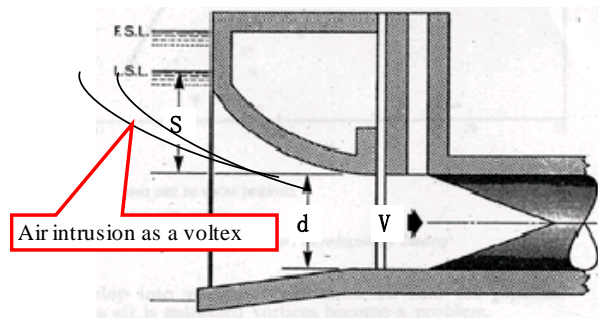
Power-frequency Voltage	30
Rectifier	30
Short Circuit Current	30
Solidly Earthed Neutral System.....	30
Stabilizing Winding	30
Surge Arrester	30
Synchronous Motor.....	30
Transformer.....	30
Voltage Transformer (VT).....	31
5. Electricwires and Cables Terms	
Bare Wire	31
Cable	31
Connected Branch Electrical Line	31
Guy Wire.....	31
Insulators.....	31
Mobile Cable	31
Multi-core Cable	31
Optical Fiber Cable.....	31
Overhead Lines	31
Sheath	32
Trolley Cable	32
Trunk Line	32
Underground Electrical Line.....	32
Wind Load	32
Stranded Wire	32
Crosslinked Polyethylene Cable (XLPE Cable)	32

Part 1 Civil Structures and Hydromechanical Equipment

Air Intrusion

A phenomenon that air intrudes in headrace when water head in it is too small.

In this case, negative pressure will happen inside the conduit and it leads to some trouble such as break of lining concrete, fluctuation of output, etc.



Allowable Compressive Stress

An upper limit of compressive stress which may not break nor give harmful damage to a structure during its life span.

Allowable Tensile Stress

An upper limit of tensile stress which may not break nor give harmful damage to a structure during its life span.

Anchor Block

A structure for anchoring penstock.



Area Affected by River Diversion

River course between dam/intake weir and outlet where river flow is decreased due to taking of water for hydropower generation.

Coefficient of Permeability

Velocity of water in a unit area of porous material made by unit hydraulic gradient.

Compressive Strength

Ultimate resistance against compressive load.

Contraction Joint

A joint arranged to absorb contraction of concrete.

Cracking

A phenomenon that an object cracks inside it.

Dam

An artificial barrier across a stream, its foundations and affiliated facilities such as spillways constructed to store flowing water or divert it to intakes for power generation or other purpose.

See Fig. 1 (p.21).**Design Flood**

A flood discharge used for dam and spillway design.

Discharge facility

Facilities for discharging water downstream of dam for the purposes other than hydropower such as preservation of environment, plantations and fishes.

**Drainage Hole**

Holes installed in foundation of dam or other structures to decrease uplift force by releasing seepage water.

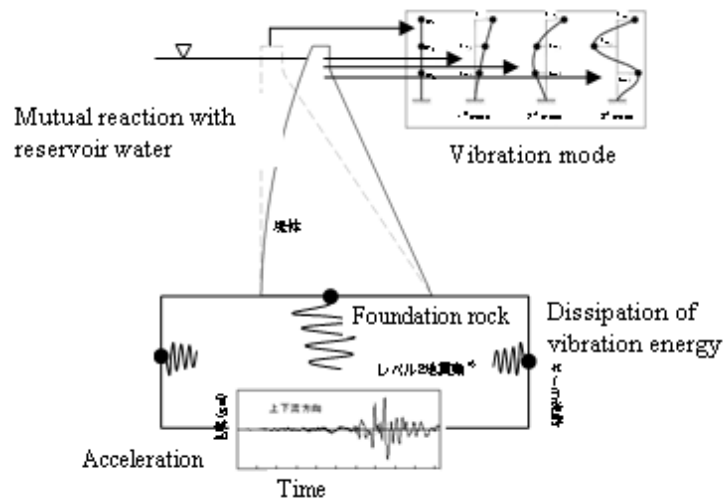
Dredging

Removing sediment out of a reservoir by excavating or pumping it.



Dynamic Analysis

A method to calculate stability and stress of a concrete dam considering dynamic effects of external loads and vibration characteristics of a dam body.



Earth Pressure

Pressure or force by soil layer such as backfill soil.

Earth-Embedded type (Penstock)

A type of penstock that is installed underground backfilled in soil layer.

Embankment Material

Material used for fill dams.

Emergency Inspection

Special inspection of structures conducted immediately after earthquake, flood or any other disasters.

Exceedance Probability

Probability that a phenomenon exceeding a certain criterion occurs.

Exposed type (Penstock)

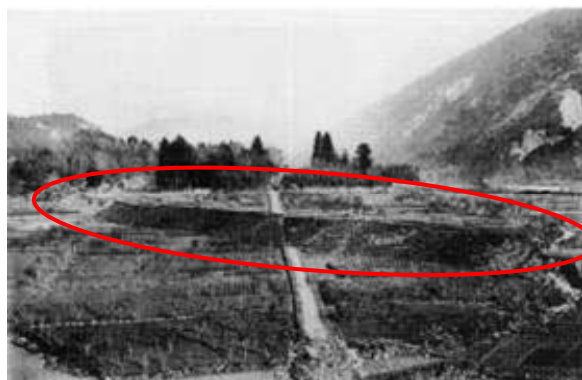
A type of penstock that is installed above ground.

**External water pressure**

Water pressure that acts on outer surface of structures.

Fault

Discontinuity in the ground made by its movement caused by earthquake or orogeny.

**Flood**

A phenomenon that river flow increases by a heavy rain, thawing, etc.

Flood Water Level

The highest elevation of reservoir water at discharging design flood.

Flushing

Removing sediment out of a reservoir using tractive force of water flow.

**Force Caused by Wind**

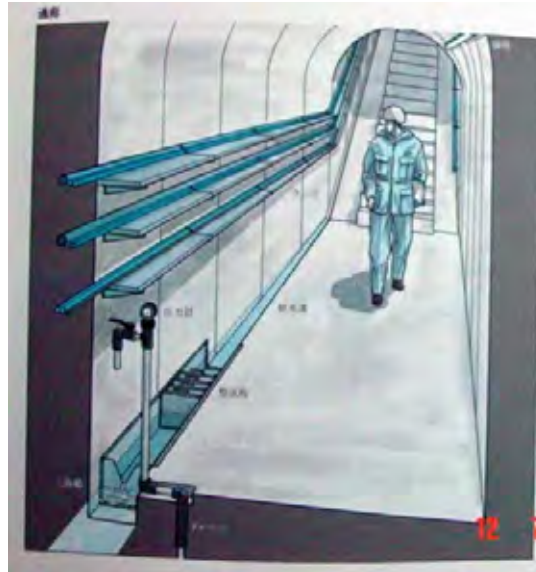
Force of wind or wind pressure acting on surface of an object.

Freeboard

A height between a dam crest and maximum design reservoir water level to be provided for non-overflow section to prevent it from overtopping.

Gallery

A passage constructed in a dam to inspect a condition of a dam body, to release seepage water from dam foundation, to install measuring devices, etc.



Gate

A structure component mainly used for discharging water, regulating water and flushing debris/sedimentation.

Geologic Investigation

Investigation conducted by geologic method to examine characteristics and structure of bedrock.

Grouting

Injecting mixture of cement and water or mortar to cracks and spaces in bedrock of dam foundation, a gap of dam concrete, etc.

Head Tank

A facility that has a function to adjust the fluctuation and differences of discharge between in the waterway and in the penstock.

It also has a function to absorb raise of water pressure inside a headrace in shutting off the load.

It's installed between headrace waterway and penstock and applied only for the run-of-river type.

See Fig. 2 (p.21).

Headrace (Headrace Waterway)

A facility installed to convey water from the intake mouth to penstock.

A gradient of the waterway is designed as gentle as possible to take the water head between the river and the waterway.

See Fig. 1 and Fig. 2 (p.21).

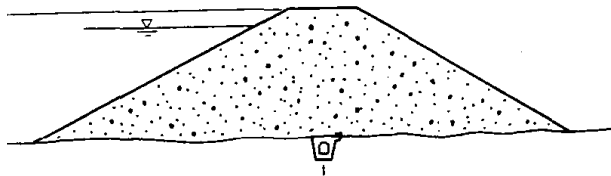
Hoisted Gate Leaf

A leaf of gate in hoisted type.



Homogenous Fill Dam

A fill dam consisting of homogeneous zone of soil material.



Hydraulic Gradient

Gradient of water head that is calculated from the difference of the head and distance between two points.

Hydraulic Model Test

A kind of experiment with a model that reflect the actual hydraulic phenomena.



Hydrodynamic Pressure

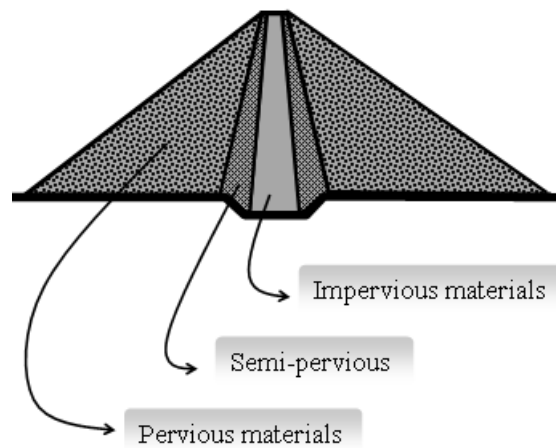
Load which reservoir water acts on a dam in case of earthquake.

Hydrostatic Pressure

Load acting on an object from standing water in touch with it.

Impervious Material

Material which has water-tight characteristics and used for an impervious zone of fill dams.

**Impounding**

Filling a reservoir with stopping river flow or restricting discharge from a dam.

In-situ Test

Tests conducted at the site.

Intake

An inlet for taking water for hydropower from river or reservoir.

This should be designed to take water effectively and not to be affected by debris from upstream.

See Fig. 1 and Fig. 2 (p.21).

Intake Weir

A small dam with height less than 15m.

**Internal Friction Coefficient (Angle)**

Tangential angle between perpendicular stress and shear resistance.

ISO

Abbreviation of “International Organization for Standardization”

Landslide

A phenomenon that a part of the ground moves by gravity or external force.

Liquefaction

A phenomenon that non-adhesive soil or sand loses shear resistance due to vibration of earthquake.

Load Rejection

A kind of action at failure in case of sudden stop of hydropower operation.

Low Water Level

The lowest elevation of reservoir water during the normal operation.

Modulus of Deformation

Ratio of stress to strain applied to objects which do not have linear relation of stress and strain.

Mud Pressure

Load acting on a dam from sediment.

Non-overflow Section

A part of a dam section where crest spillway does not exist and no overtopping is allowed.

Normal High Water Level

The highest elevation of reservoir water during the normal operation.

Outlet

A kind of mouth for releasing water after generation into river.

See Fig. 1 and Fig. 2 (p.21).

Overflowing Water Surface

Water surface line of overflowing through the spillway.

Overtopping

A phenomenon that water stored in a reservoir flows over a non-overflow section of a dam.

Overturning

A phenomenon that a structure overturns by external force.

Penstock

Structures installed to guide water directly from intakes, head tanks or surge tanks to hydraulic turbines consisting of pressure lining parts and their attachment facilities.

See Fig. 1 and Fig. 2 (p.21).

Permeability Test

A test to measure a coefficient of permeability.

Pervious Material

Material used for a pervious zone of fill dams.

See "Impervious Material".

Poisson's Ratio

A ratio of strain perpendicular to a load to that along a load.

Pore Pressure

Stress made by pore water.

Power-drive Device

Powered device for operating equipment such as a gate mechanically.

**Powerhouse**

A building to install water turbines, generators and other equipment for power generation.

Pressure Conduit

A headrace/tailrace waterway of which inside is pressured.

This type of waterway is adopted in the pondage type and reservoir type hydropower project.

Probable Maximum Flood (PMF)

The flood that may occur under the theoretical combination of the most severe meteorological and hydrological conditions for rainfall. (PMP: Probable Maximum Precipitation)

Proportioning Strength

Strength of concrete to indicate design strength considering deviation.

Rapid Drawdown

A condition lowering reservoir water level rapidly. It may cause slip failure in a fill dam.

Re-regulation Pond

A pond constructed to regulate fluctuation of discharge for power generation from a powerhouse and to discharge constant flow downstream.

Reservoir

An artificial lake or pond appeared by construction of dam.

See Fig. 1 (p.21).

Rock-Embedded type (Penstock)

A type of penstock that is installed underground in surrounded rock.

Saddle

One of the support structures for penstock applied to exposed type.

**Sand Flushing Gate**

A gate for flushing sedimentation sand in the bottom of hydro facilities such as intake weir.

Screen Bar

A facility for preventing suspending trash in the river from coming into intake.

Sedimentation

A phenomenon that sediment is stored in a reservoir.

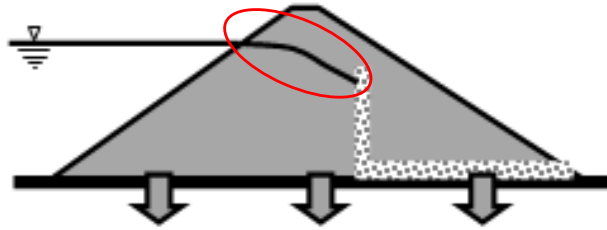
Seepage Failure

A phenomenon that excessive amount of seepage water through a dam embankment or foundation stratum causes piping and brings about a dam breach.



Seepage Line

A line of water surface formed in embankment when water infiltrates it.

**Seismic Coefficient**

Ratio of design seismic load to self-weight of a structure.

Seismic Force

Force induced by earthquake.

Self-weight

Own weight of a structure.

Semi-pervious Material

Material used for a semi-pervious zone of fill dams.

Settlement

A phenomenon that elevation of embankment or foundation goes down.

Settling Basin

A facility for making suspended sands in the water descend to the bottom and preventing them from going into headrace waterway.

It's installed between intake and headrace waterway and applied only for the run-of-river type.

**Shear Strength**

Ultimate resistance against shear load.

Sliding

A phenomenon that a structure slides by external force.

Solidifying

Hardening of cement by hydration.

Spillway

An outlet or waterway for introducing spilling flood water to downstream of dam safely.



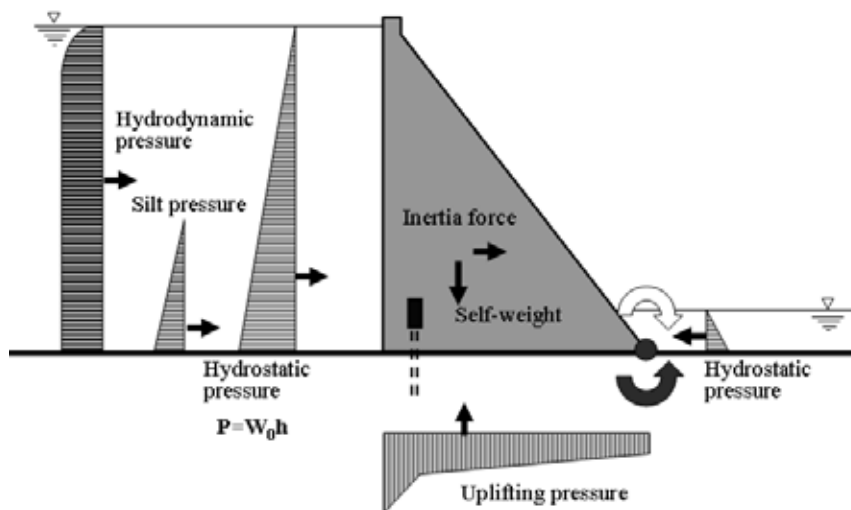
Spillway Gate

A gate installed at the spillway.



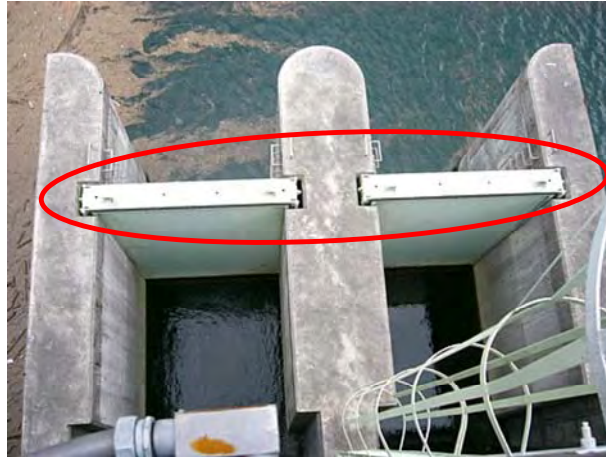
Static Analysis

A method to calculate stability and stress of a structure from equilibrium of external loads and self-weight of a structure.



Stop Log

Temporary shut down gate used in case of emergency or maintenance work under the dry condition.

**Storage Effect**

An effect that a reservoir with a capacity reduces peak discharge of an inflow flood hydrograph.

Strength Test

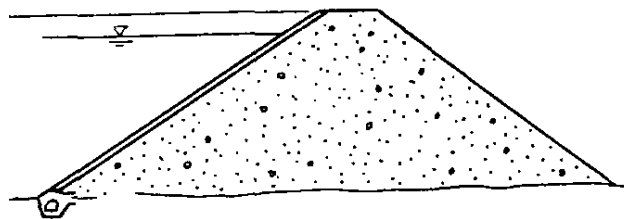
A test to measure ultimate resistance of material against failure.

Surcharge Load

Weight of an object on a structure.

Surface Diaphragm Type Fill Dam

A fill dam consisting of a dam body with pervious material and an impervious diaphragm installed on the upstream slope of the dam.

**Surge Tank**

A facility that has a function to adjust the fluctuation and differences of discharge between in the waterway and in the penstock.

It also has a function to absorb raise of water pressure inside a headrace in shutting off the load.

It's installed between headrace waterway and penstock and applied only for the pondage type or reservoir type that install pressure type headrace waterway.



Surging

Swing of water level in a surge tank due to pressure increase or decrease by load rejection or rapid load variation.

Tailrace (Tailrace Waterway)

A waterway that is installed between draft tube and outlet.

It's a waterway for conducting water after generation into river.

See Fig. 1 (p.21).

Tailrace Bay

A kind of bay that is installed between draft tube and tailrace waterway.

This has a function for making water after generation stabilized by setting wide pool.

Temperature load

Load acting in facilities itself according to expansion or shrinkage of material due to change of temperature.

Temporary Facilities for Construction

Temporary facilities that are installed only in construction period and removed after construction.

Transverse Joint

A contraction joint in concrete structure arranged perpendicular to a dam axis.

**Trash Rake**

Equipment for removing trash trapped in front of screen bar.

Uplift

Upward pressure of seepage water through dam foundation acting at the bottom of dam.

Valve

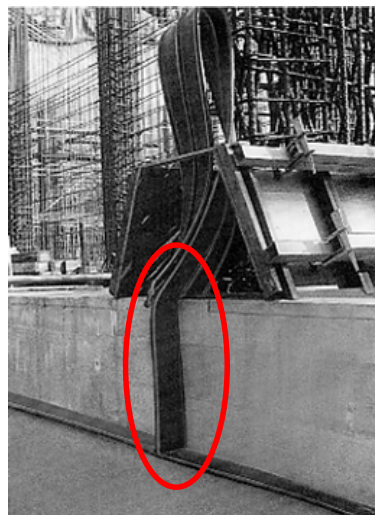
A device to regulate flow of fluid by opening, closing or partially obstructing various passage way.

Water Hammer Pressure

A pressure surge or wave resulting when a fluid in motion is forced to stop or change direction suddenly.

Waterstop

A plate made of metal or plastics installed in a contraction joint and construction joint of concrete structures.



Water-tightness

Characteristics of material or structure how it resists against water by infiltration through it.

Waterway

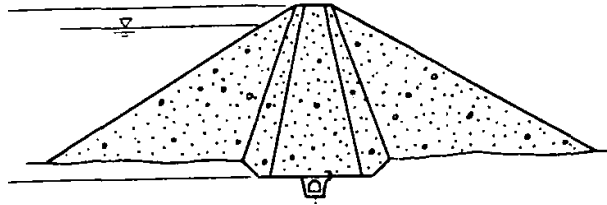
A general term of channels and auxiliaries including gates and valves that take flowing or stored water, convey it to hydro-turbines, and discharge it into a river and so on for power generation.

Weak Stratum

A part of the ground deteriorated by some reasons.

Zoned Type Fill Dam

A fill dam consisting of impervious, semi-pervious and pervious zones.



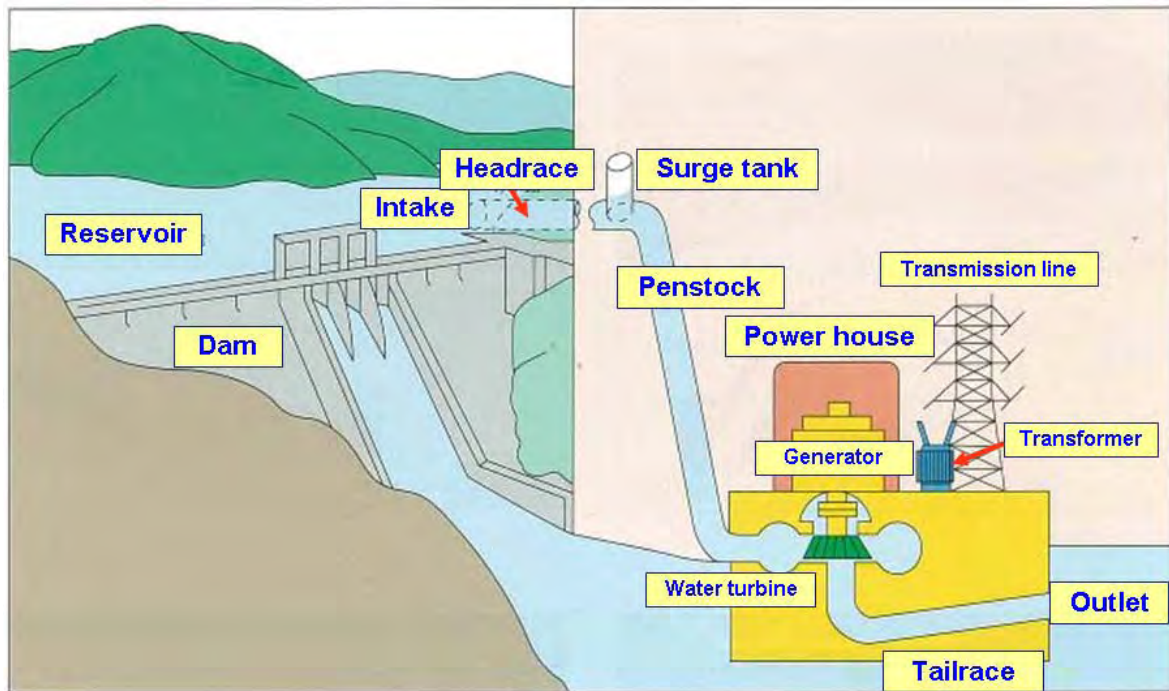


Fig. 1 Reservoir Type

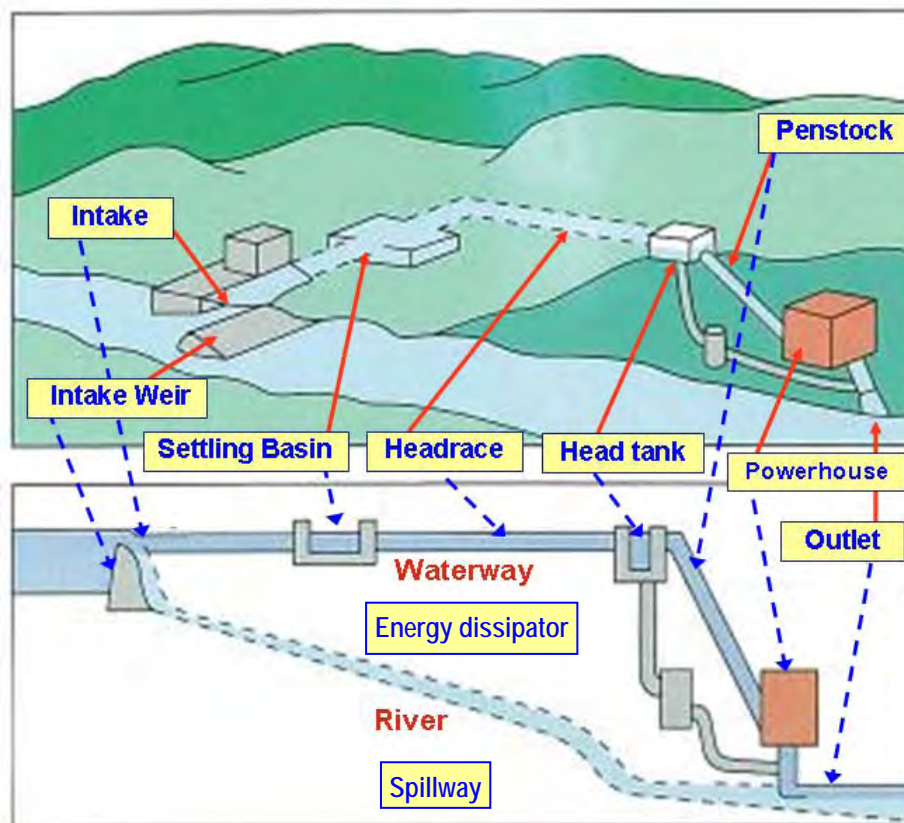


Fig. 2 Run-of-river Type

Part 2 Electrical Facilities

1. General Terms

Telecommunication Equipment for Electric Power System

Telecommunication equipment which is exclusively used for maintaining the electrical facilities.

Load Dispatching Center

The place which control the power stations, substations, switching stations, distribution lines and transmission lines.

2. Physics Terms

Capacitance

Amount of electric charge stored for a given electric potential.

Electrical Conductivity

Degree of a material's ability to conduct an electric current.

Electromagnetic Induction

Connecting the electromotive force with relation to the magnetic flux through the circuit. Faraday's law of induction describes a basic law of electromagnetism.

Electrostatic Induction

A redistribution of electrical charge in an object, caused by the influence of nearby charges.

Illuminance

In photometry, illuminance is the total luminous flux incident on a surface, per unit area. It is a measure of the intensity of the incident light, wavelength-weighted by the luminosity function to correlate with human brightness perception. Similarly, luminous emittance is the luminous flux per unit area emitted from a surface. Luminous emittance is also known as luminous existence.

In SI derived units, these are both measured in lux (lx) or lumens per square meter ($\text{cd}\cdot\text{sr}\cdot\text{m}^{-2}$). In the CGS system, the unit of illuminance is the phot. One phot is equal to 10,000 lux.

Power Factor

Under periodic conditions, ratio of the absolute value of the active power to the apparent power.

Reactive Power

Non-active power for a linear two-terminal element or two-terminal circuit.

3. Mechanical Terms**Bypass Valve**

A valve for pipe providing an auxiliary passage for main water way. Bypass valve shall open before operation of main inlet valve to equalize a pressure of penstock and spiral casing.

Compressed Air Supply System

A system which supplies compressed air for oil supply system and breaks of unit. In case of condenser operation, air is also used for depressing water level in draft tube liner. Normally system consists of air compressor, air tanks, pressure gauge, relays and so on.

Counter Weight

A weight equal to another; counterbalance.

Counter Weight Closing Device

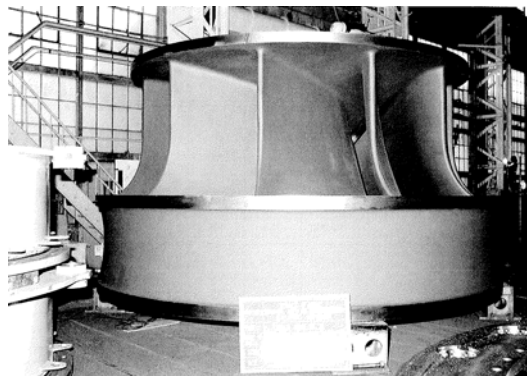
Guide vanes or main inlet valve closing by means of the force of counter weight with single action servomotor.

Deflector of Pelton Turbine

Device of Pelton turbine controlled by the regulator to deflect the water jet away from the buckets. Normally the deflectors are used at emergency cases.

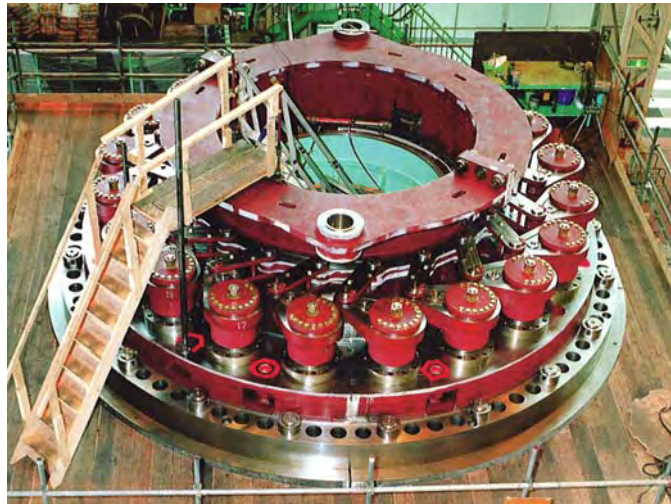
Francis Turbine

Reaction type turbine with meridional flow which is approximately radial between usually adjustable guide vanes and changes gradually direction inside the fixed runner blades so that the flow approaches axial flow at the outlet of runner.



Guide Vane

Adjustable elements which control the discharge of water to turbine runner.



Pressure Oil Supply System

A system which supplies high pressure oil for control and operation of turbine. Normally system consists of oil pumps, oil tanks, oil sump tanks, oil pressure gauge, oil level gauge, relays and so on.

Kaplan Turbine

Axial turbine with radial inflow to the guide vanes, usually with vertical shaft and elbow draft tube. Adjustable guide vanes and adjustable runner blades, double-regulated.



Inlet Valve

Main water valve located at the inlet of turbine distributor.

Maximum Momentary Pressure

Maximum momentary pressure is maximum water pressure in case of sudden change of inflow water to turbine.

Momentary Pressure Variation

Difference between maximum water pressure at test and static head of turbine center at stand still condition is called momentary pressure variation. Ratio of momentary pressure value to static head is also called momentary pressure variation.

Needle of Pelton Turbine

Streamlined moving element which controls nozzle discharge of Pelton type turbine.

**Pelton Turbine**

Impulse turbine in which the runner has double bowl buckets, and the nozzle axes are located in the plane of symmetry of the buckets.



Safety Valve

A safety valve is a valve mechanism for the automatic release of a gas from a boiler, pressure vessel, or other system when the pressure or temperature exceeds preset limits.

Self Closing Tendency of Guide Vanes or Main Inlet Valve

Characteristic of guide vanes or inlet valve to close automatically by means of eccentric construction with water force.

Steady State Runaway Speed

Possible maximum rotating speed of turbine with no-load at some head with some opening of guide vane, runner vane or needle.

Turbine

Prime mover for transforming hydraulic energy into mechanical energy. The term does not include the inlet or outlet valves nor the associated generator or regulator.

4. Electrical Terms**Automatic Voltage Regulator (AVR)**

AVR is an abbreviation for Automatic Voltage Regulator. It is important part in synchronous generators. It controls the output voltage of the generator by controlling its excitation current. Thus it can control the output reactive power of the generator.

Battery

Combination of one or more electrochemical galvanic cells which store chemical energy that can be converted into electric potential energy, creating electricity.

Bus-bar

Low impedance conductor to which several electric circuits can be separately connected.

Capacitor Voltage Transformer (CVT)

A capacitor voltage transformer is one kind of VT. In its most basic form the device consists of three (3) parts: two (2) capacitors across which the voltage signal is split, an inductive element used to tune the device to the supply frequency and a transformer used to isolate and further step down the voltage for the instrumentation or protective relay.

Circuit Breaker

Automatically-operated electrical switch designed to protect an electrical circuit from damage caused by overload or short circuit.

Contact Preventing Plate

Kind of earthed metal plate which is placed between medium and low voltage winding to prevent the mixture of them.

Current Transformer (CT)

A type of instrument transformer designed to provide a current in its secondary winding proportional to the alternating current flowing in its primary. They are commonly used in metering and protective relaying in the electrical power industry where they facilitate the safe measurement of large currents, often in the presence of high voltages. The current transformer safely isolates measurement and control circuitry from the high voltages typically present on the circuit.

Dielectric Breakdown

A reference to the breakdown of the insulation of an electrical wire or other electrical component. Such breakdown usually results in short circuit or blown fuse. This occurs at the breakdown voltage. The breakdown is often associated with the failure of solid or liquid insulating materials used in high voltages transformers or capacitors in the electricity distribution grid. The breakdown can also occur across the strings of insulators that suspend overhead power lines, within underground power cables, or lines arcing to nearby branch of trees.

Dielectric Strength

Electric field strength which can withstand intrinsically without breaking down without experiencing failure of its insulating properties.

Disconnecting Switch

Switches are safety devices to open or to close a circuit when there is no current through them. They are used to isolate a part of a circuit, a machine, a part of an overhead line or an underground line. In principle, disconnecting switches do not have to interrupt currents, as they are designed for use on de-energized circuits.

Earth Fault

Insulation fault between one phase conductor and earth only.

Earth Fault Circuit Breaker

Circuit breaker which is automatic device for stopping the earth fault current flow in an electric circuit as a safety to prevent electrical shock.

Enclosed Fuse

Plug fuse or cartridge fuse, which has metal or insulated material housing, having capacity to shut-off rated current by melting material without arc nor gas safety.

Expulsion Fuse

Fuse of which operation is accomplished by expulsion of gases produced by the arc.

Fuel Cell

Cell which produces an electric current directly from a chemical reaction.

Gas Insulated Equipment

Electrical equipments whose conductors are contained in an enclosure and insulated with a compressed insulated gas. Normally sulfur hexafluoride (SF₆) gas is applied.

Generator

Machine which converts mechanical energy into electrical energy.

Ground or Earth

Direct physical connection to earth.

Idle Winding

Winding which is not used normal operating conditions.

Induction Motor

A type of asynchronous AC motor where power is supplied to the rotating device by means of electromagnetic induction.

Instrument Transformers

Transformer intended to transmit an information signal to measuring instruments, meters and protective and control device.

Insulation Oil

Normally mineral oils, as delivered, intended for use in transformers, switchgear and similar electrical equipment in which oil is required as an insulant or for heat transfer.

Insulation Level

A set of standard withstand voltages which characterize the dielectric strength of the insulation.

Insulation Resistance

Resistance under specified conditions between two conductive elements separated by insulating materials.

Isolated-Phase Bus (IPB)

A method of construction for circuit carrying very large currents, typically between a generator and its step-up transformer in a thermal or hydropower station. Each phase current is carried on a separate conductor, enclosed in a separate grounded metal housing. Conductors are usually hollow aluminum tubes or aluminum bars, supported within housing on porcelain or polymer insulators.

Leakage Current

It is a result of the dielectric material not being a perfect insulator and having some non-zero conductivity, allowing a leakage current to flow, slowly discharging the capacitor.

Lightning Impulse Voltage

Impulse having a wave shape designation of 8/20 μ s.

Lightning Surge

Surge current or voltage caused by lightning.

LIWL (Lightning Impulse Withstand Voltage)

LIWL is abbreviation of lightning impulse withstand voltage. LIWL means insulation strength of electrical equipment against standard lightning impulse voltage. LIWL shall be indicated as voltage.

Neutral Point of Transformer

Point of a symmetrical system of voltage which is normally at zero potential.

On-Load Tap Changer (OLTC)

The tap which can be changed without interruption.

Over-current

A situation where a larger than intended electric current exists through a conductor, leading to excessive generation of heat and the risk of damaging infrastructure and equipment and causing fires. Possible causes for over-current include short circuits, excessive load, and incorrect design.

Over-current Protective Device

Circuit breaker or fuse which breaks the over current in an electric circuit as a safety.

Overload Protective Device

Device intended to operate in the event of overload on the protected section.

Polychlorinated Biphenyl (PCB)

High toxicity organic compounds which were used as coolants and insulating fluids for transformers and capacitors.

Power-frequency Voltage

Voltage at rated frequency of the power system.

Rectifier

Electrical device which rectifies an alternating current into a direct current.

Short Circuit Current

Current flowing at a given point of a network resulting from a short circuit at another point of this network.

Solidly Earthed Neutral System

System whose neutral point is physically earthed directly

Stabilizing Winding

Supplementary delta-connected winding, especially provided on star-star or star-zigzag connected transformers to decrease the zero-sequence impedance of the star-connected winding.

Surge Arrester

An appliance designed to protect electrical devices from voltage spikes. The surge arrester attempts to regulate the voltage supplied to an electric device by either blocking or by shorting to ground voltages above a safe threshold.

Synchronous Motor

Synchronous machine which converts electrical energy into mechanical energy.

Transformer

Equipment which transfers electrical energy from one circuit to another through inductive coupled electrical conductors.

Voltage Transformer (VT)

A transformer used in power system to step down some voltage signals and provide low voltage signals either for measurement or to operate a protective relay.

5. Electricwires and Cables Terms**Bare Wire**

Conductor which is not covered or insulated any insulation.

Cable

One or more strands bound together. Electrical cable may contain one or more metal conductors, which may be individually insulated or covered.

Connected Branch Electrical Line

Branch electrical line which is connected from service point to other service point not through any supporting structure.

Guy Wire

Steel wire rope or rod, working under tension, connecting a point of a support to a separate anchor, or connecting two points of the support.

Insulators

Apparatus intended for electrical insulation and mechanical fixing of equipment or conductors which are subject to potential differences.

Mobile Cable

Cable which is movable from one place to the other.

Multi-core Cable

Kind of electrical cable which has multi cores.

Optical Fiber Cable

Cable in which filament-shaped waveguide made of dielectric materials for guiding optical waves.

Overhead Lines

Metallic conductors which are used to transmit electrical energy to electrical facilities at a distance from the energy supply point.

Sheath

Uniform and continuous tubular covering made of conductive or insulating material.

Trolley Cable

Electric power supply cable which is being contacted to trolley directly supplying for such as trams, trolleybus, train or crane.

Trunk Line

Main line for the electrical line.

Underground Electrical Line

Electric line with insulated conductors buried directly in the ground or laid in cable ducts, pipes etc.

Wind Load

A load resulting from perpendicular wind pressure applied to any element of the overhead line, with or without ice loading.

Stranded Wire

One of the wires of a stranded conductor.

Crosslinked Polyethylene Cable (XLPE Cable)

Cable which has sheath of cross-linked polyethylene.