

Annex7: List of Equipment provision and Facilities construction by Japanese side

No.	Item	Price	Budget type (P.Y.)	Purchase/Delivery date	unit	Manufacturer	Model type	management incharge (section/place/person)
F.Y.2003								
1	Laser printer	108.000	2003, Equipment donation	30/03/2004	4	HP	Laser Jet 1300	Project office (3), DFO-Kitui (1)
2	Laser printer	164.000	2003, Equipment donation	30/03/2004	2	HP	Laser Jet 2300N	Project office (2)
3	UPS	51.600	2003, Equipment donation	30/03/2004	6	APC	650VA	Project office (5), DFO-Kitui (1)
4	Scanner	114.750	2003, Equipment donation	31/03/2004	1	Epson	GT-J5000	Project office
5	Projector	291.500	2003, Equipment donation	30/03/2004	1	Canon	LV7345	Project office
6	Inkjet Plotter	1.011.375	2003, Equipment donation	30/03/2004	1	HP	DesignJet500	Project office
7	GIS Workstation (Computer)	119.404	2003, Equipment donation	30/03/2004	1	Dell	Opti Plex	Project office
8	Digital Copiers AR-M450N	1.120.000	2003, Equipment donation	30/03/2004	2	Sharp	AR450	F.D.-Tharaka(1), Mberre(1)
9	Personal Computer	480.000	2003, Equipment donation	30/03/2004	6	IBM	NetVista	Project office (5), DFO-Kitui (1)
10	TA Copier DC 2068	1.007.000	2003, Equipment donation	31/03/2004	1	Kyosera	KM6330	Project office
11	Facsimile	117.340	2003, Equipment donation	31/03/2004	4	Canon	L220	Project office
12	4x4 Station Wagon	2.550.643	2003, Equipment donation	06/07/2004	1	Toyota	Landcruiser	F.D.H.Q.
13	4x4 Pick Up	5.926.221	2003, Equipment donation	01/09/2004	3	Toyota	Landcruiser	F.D.-Kitui(1), Tharaka(1), Mberre(1)
14	4x4 Station Wagon Y 61	4.164.952	2003, Equipment donation	16/06/2004	2	Nissan	Patrol	F.D.H.Q.
15	Motor Cycle	1.558.550	2003, Equipment donation	06/07/2004	7	Suzuki	TF-125	F.D.-Tharaka(3), Mberre(4)
Sub-total of 2003, Equipment donation			18.785.335					
16	Digital still camera	69.386	2003, Expert equipment	16/04/2004	1	Olimpus	C-5060 Widezoom	Project office
17	Compactflash memory card	21.897	2003, Expert equipment	16/04/2004	1	Buffalo	RCF-XXS12M	Project office
18	Digital video camera	117.852	2003, Expert equipment	16/04/2004	1	Sony	DCR-PC330E	Project office
19	GPS	46.722	2003, Expert equipment	16/04/2004	1	Garmin	eTREX VISTA	Project office
20	World map	15.411	2003, Expert equipment	16/04/2004	1	Garmin		Project office
21	Lap top computer	150.628	2003, Expert equipment	16/04/2004	1	Fujitsu	FMVLT50E	Project office
22	Lap top computer & soft ware	225.941	2003, Expert equipment	26/04/2004	1	Hitachi	Prius note 200H15XVP3W	Project office
23	Color printer	26.499	2003, Expert equipment	26/04/2004	1	Canon	Pixus 80i	Project office
24	Digital camera	62.762	2003, Expert equipment	26/04/2004	1	Olimpus	Camedia C-5060 Widezoom	Project office
25	GPS	25.105	2003, Expert equipment	26/04/2004	1	magellan	Sportrak 27i-3812	Project office
Sub-total of 2003, Expert equipment			762.203					
26	Office renovation	144.470	2003, Local activity cost	30/03/2004		Patu Constructions		Project office
27	Office furniture	777.572	2003, Local activity cost	29/03/2004		Victoria Furnitures		Project office
28	Telephone line construction	105.600	2003, Local activity cost	30/03/2004		Beamsport		Project office
29	Generator	1.415.800	2003, Local activity cost	30/03/2004	1	Olympian	GEP 110	F.D.H.Q.
30	Project Pamphlet	65.000	2003, Local activity cost	30/03/2004	500	Penguin Business Systems		Project office
Sub-total of 2003, Local activity cost			2.508.442					
Total		22.055.980						
F.Y.2004								
1	VHF/HF Radio Equipment	1.730.000	2004, Equipment donation	23/02/2005	1	Beamspot Communications		Project office & DFO-Kitui, Mberre, Tharaka
2	Mini Bus	3.300.600	2004, Equipment donation	28/02/2005	2	Toyota	HiAce(LH114)	Project office
3	Motor Cycle	1.225.000	2004, Equipment donation	23/03/2005	5	Honda	XL200	DFO-Kitui
4	Laptop Computer	297.000	2004, Equipment donation	25/11/2004	2	Toshiba	A70-S256	Project office
5	Bicycle	134.000	2004, Equipment donation	24/11/2004	30	Phonex	26inch	DFO-Kitui, Mberre, Tharaka
6	Generator	960.000	2004, Equipment donation	31/03/2005	1	F.G.Wilson	XP50E1	DFO- Tharaka
Sub-total of 2004, Equipment donation			7.646.600					
7	Office construction Mberre	1.593.918	2004, Local activity cost	14/03/2005	1	Mwanja General Contractors		DFO-Mberre
8	Office construction Tharaka	1.658.890	2004, Local activity cost	14/03/2005	1	Mukasi Builders& General Suppliers		DFO-Tharaka
9	Software	136.200	2004, Local activity cost	13/04/2004	6	MS	Office 2003 Pro OEM	Project office
10	B/Bar winch & Air con fitted	267.600	2004, Local activity cost	11/08/2004	1	Toyota/Nissan		Accessory for 3 station wagon car
11	Drawer Fireproof filing Cabinet	100.201	2004, Local activity cost	27/07/2004	1	TA		Project office
12	Fridge	24.595	2004, Local activity cost	27/07/2004	1	Toshiba		Project office
13	Car transmission lock	49.173	2004, Local activity cost	06/07/2004	3	Multi high security systems		Accessory for 3 station wagon car office
14	Binding machine, Typewriter	42.500	2004, Local activity cost	02/06/2004	1	Office Technologies		office
15	Cable installation for Generator	144.536	2004, Local activity cost	25/05/2004	1	Mantrac		F.D.H.Q.
16	White board	14.735	2004, Local activity cost	02/05/2004	1	Victoria Furnitures		Project office
17	Finisher	221.950	2004, Local activity cost	27/08/2004	1	Office Technologies		Project office
Sub-total of 2004, Local activity cost			4.254.298					
Total		11.900.898						
F.Y.2005								
1	Lap-top computer	405.900	2005, Equipment donation	22/07/2005	3	TOSHIBA	Satellite A60	Dryland forestry branch Farm forestry & exten. Branch KEFRI-Kitui office(Stolen Nov.2005)
2	LCD Projector	390.000	2005, Equipment donation	22/07/2005	3	Epson	EMP-SIH LCD	Project office, KEFRI HQ training office, KEFRI-Kitui office
3	Color laser printer	375.000	2005, Equipment donation	22/07/2005	1	Epson	C9100	Project office
4	Copier	381.400	2005, Equipment donation	22/07/2005	2	Kyocera Mita	KM 2050, Digital copier	FD.H.Q., KEFRI-Kitui
5	4WD Station Wagon	2.377.796	2005, Equipment donation	27/10/2005	1	Toyota	Land Cruiser Hardtop	Project office
6	Motorbike	1.309.500	2005, Equipment donation	08/11/2005	5	Yamaha	AG200, 4stroke	(Project office)
7	VHF/HF Radio Equipment	999.900	2005, Equipment donation	29/10/2005		BEAMSPOT COMMUNICATIONS		DFO-Kitui, Mberre, DFO- M... ..
Sub-total of 2005, Equipment donation			6.239.496					
8	Software	17.800.00	2005, Local activity cost	18/05/2005	1	Windows	Power point 2003	Project office coordinator room
9	Laptop computer for field	127.600.00	2005, Local activity cost	24/05/2005	1	Toshiba	Satellite M40X-S168	KEFRI HQ training office
10	Accessories instauration for computer	68.380.00	2005, Local activity cost	24/05/2005	1	Office technologies Ltd.	Floppy drive, USB-OEM, Software	KEFRI HQ training office
11	Database server	68.500.00	2005, Local activity cost	02/06/2005	1	Kaiza computers services	60GB HD, 256MB Ram, Pentium 3 processor	Project office PM room
12	Digital camera & accessories	79.350.00	2005, Local activity cost	07/06/2005	3	Olympus	Camedia 160	Dryland forestry branch, Farm forestry & exten. branch, KEFRI-Kitui director office
13	Office networking	40.600.00	2005, Local activity cost	24/06/2005	1	Kaiza compute's services	Network switch & instauration	Extension & partnership division office
14	Adaptor	23.200.00	2005, Local activity cost	13/07/2005	1	Toshiba	AC type for computer	Dryland forestry branch
15	Glass book shelf	28.000.00	2005, Local activity cost	18/08/2005	2	Furniture palace	DT3015, DT3017	Project office PM room
16	Office extension Kitui	576.473.60	2006, Local activity cost	09/03/2006	1	Kyamboo building contractors and civil engineering		DFO-Kitui
Sub-total of 2005, Local activity cost			1.029.904					
Total		7.269.400						

Annex 8: List of Kenyan Couterpart Personnel

Project inputs

⟨Input by Kenyan side⟩

	Name	Post	Assignment	Period
Administrative Personnel				
1	D. K. Mbugua	Director, KFS	Project Director	April 2004 to date
2	Paul K. Konuche	Director, KEFRI	Project Co-Director	April 2004 to date
3	Jennifer W. Njige	1. Senior Conservator of Forests	Head, Farm Forestry & Extension Branch;	April 2004 to April 2006
		2. Acting Deputy Chief Conservator of Forests	Head, Forestry Extension and Partnerships Division	May 2006 to December 2007
FD Headquarters				
4	P. M. Kariuki	Senior Conservator of Forests	Project Manager	April 2004 to date
5	Jane N. Ndeti	Conservator of Forests I	Assistant Project Manager	July 2004 to Date
6	Monicah N. Kalenda	1. Conservator of Forests I	Head Farm Forestry & Extension Branch	May 2006 to November 2007
		2. Deputy Director	Forest Extension Services Division	From December 2007
7	Anthony M. Maina	Senior Conservator of Forests	Head Dryland Forestry Branch	April 2004 to December 2007
8	Esther Wangombe	Conservator of Forests I	Head, Dryland Forestry Branch	December 2007 to date
Kitui District				
8	Elizabeth W. Wambugu	Conservator of Forests I	District Forest Officer, Kitui	April 2004 to June 2005
9	Joseph N. Njigoya	Conservator of Forests I	District Forest Officer, Kitui	July 2005 to date
10	Kenneth M. Riungu	Forester	Assistant District Forest Officer, Kitui	May, 2005 to date
11	Cyrus Nduku	Forester	Divisional Forest Extension Officer, Mutonguni Div.	April 2004 - May 2006
12	Kapula Ali	Forester	Divisional Forest Extension Officer, Mutonguni Div.	May 2006 to date
13	Peter Kyenze	Forester	Divisional Forest Extension Officer, Chuluni Div.	June 2004 - May 2006
14	Joseph Ndirangu	Forester	Divisional Forest Extension Officer, Chuluni Div.	May 2006 to date
15	B. N. Kakuku	Forester	Divisional Forest Extension Officer, Mutitu Div.	April 2004 to date
16	Oyieko Manoa	Forester	Divisional Forest Extension Officer, Mwitika Div.	April 2004 to September 2005
17	Karimi Maina	Forester	Divisional Forest Extension Officer, Mwitika Div.	November, 2005 to date
18	Paul Musembi	Forester	Divisional Forest Extension Officer, Matinyani Div.	April 2004 to date
19	Charles M. Makau	Forester	Divisional Forest Extension Officer, Yatta Div.	April 2004 to October 2007
	William Langat	Forester	Divisional Forest Extension Officer, Yatta Div.	November 2007 to March 2008
20	J. N. Miruri	Forester	Divisional Forest Extension Officer, Mutomo Div.	April 2004 to date

	Name	Post	Assignment	Period
21	Benedict M. Mainga	Forester	Divisional Forest Extension Officer, Ikutha Div.	April 2004 to date
22	Remmy Manzi	Forester	Divisional Forest Extension Officer, Central Div.	April 2004 to December 2007
	Charles Kavithi	Forester	Divisional Forest Extension Officer, Central Div.	July 2006 to date
23	Sammy Mbuko	Snr. Subordinate Staff	Divisional Extension Worker, Mutha Div.	April 2004 to date

	Name	Post	Assignment	Period
Mbeere District				
24	P. N. Karanja	Conservator of Forests I	District Forest Officer, Mbeere	April 2004 to date
25	Wellington Ndaka	Forester	Assistant District Forest Officer, Mbeere	March 2005 to date
26	Elvis K. Fondo	Forester	Divisional Forest Extension Officer, Siakago Div.	April 2004 to date
27	Chritopher Maina	Senior Forester	Divisional Forest Extension Officer, Gachoka Div.	April 2004 to August 2007
	Kariuki Kooro	Forester	Divisional Forest Extension Officer, Gachoka Div.	October 2007 to date
28	Peter O. Aloo	Forester	Divisional Forest Extension Officer, Mwea Div.	April 2004 to date
29	Peter King'oo	Forester	Divisional Forest Extension Officer, Evurore Div.	November, 2004 - August 2005
30	Theophilus Muasya	Forester	Divisional Forest Extension Officer, Evurore Div.	August 2005 to date
Tharaka District				
31	James R. Chomba	Conservator of Forests I	District Forest Officer	April 2004 to date
32	George K. Nduati	Forester	Assistant District Forest Officer	March 2005 to date
33	Phineas Rewa	Forester	Divisional Forest Extension Officer, Tharaka North Div.	April 2004 to date
34	Silas Mutea	Forester	Divisional Forest Extension Officer, Tharaka South Div.	April 2004 to date
35	Samuel M. Gachagua	Forester	Divisional Forest Extension Officer, Tharaka Central Div.	April 2004 to date
36	Peter Nyabuti	Forester	Forester, Tharaka District Hq. Office	April 2005 to August 2007
Kenya Forestry Research Institute, Kitui				
37	James M. Kimondo	Centre Director, KEFRI-Kitui	Project Co-Manager	April 2004 to May 2007
	M. T. E. Mbuvi	Centre Director, KEFRI-Kitui	Project Co-Manager	May 2007 to date
38	Daudi Kyalo	Technologist	Tiva Tree nursery manager	April 2004 to date
39	Samuel Auka	Research Assistant	Pilot Forest	April 2004 to date
40	Ali Atanas (Deceased)	Research Assistant	Technology transfer	April 2004 - December 2005
41	Bernard Kigwa	Research Officer	Technology development	June 2006 to date
42	Akula Mwamburi	Research Officer	Technology transfer	April 2004 to date

No.	Name	Post	Assignment	Period
Support Staff				
1. FD Headquarters				
1	John M. Kamau	Driver	FD. Hq Office	April 2004 todate
2	Paul K. Muthaki	Driver	FD. Hq Office	August 2004 todate
3	Titus M. Kyosi	Driver	FD. Hq Office	February 2006 todate
4	Lucy Wangeci	Secretary	FD. Hq Office	June 2004 todate
5	Rachel Wambui	Subordinate staff	FD. Hq Office	May 2004 todate
2. Kitui District				
6	Mary Nganza	Typist / Receptionist	Kitui District Office	April 2004 todate
7	Bosco Wambua	Driver	Kitui District Office	April 2004 todate
	Jason Kioko	Driver	Kitui District Office	April 2004 todate
9		Nursery Headman	Mutitu Tree Nursery	April 2004 todate
10-13	Nursery Workers	4 Nursery workers	Mutitu Tree Nursery	April 2004 todate
3. Tharaka District				
14	Ignatius Mutaku	Driver	Tharaka District Office	April 2004 - January 2005
15	Raphael Nkanya	Driver	Tharaka District Office	February 2005 todate
16	Grace Mucee	Typist / Receptionist	Tharaka District Office	April 2005 todate
17.18		2 Nursery workers	Mutonga Tree Nursery	April 2004 todate
4. Mbeere District				
19	Cyrus Njiru	Driver	Mbeere District Office	April 2004 todate
20	Mary Njoki	Typist / Receptionist	Mbeere District Office	April 2004 todate
21	Joseph Mugo	Nursery Headman	Mbeere District Office Tree Nursery	April 2004 todate
22-24		3 Nursery workers	Mbeere District Office Tree Nursery	April 2004 todate
Kenya Forestry Research Institute, Kitui				
25-28		4 Nursery workers	Tiva Tree nursery	April 2004 todate
29	Nyambati Mutego	1 Driver		April 2004 todate
30	Redemta Mutembei	1 Secretary		April 2004 todate

Annex 9: Project Cost sharing by Kenyan side and Japanese Side
(Japanese Side)

(Unit : Ksh)

Items of Expenditure	JY2003 (Result)	JY2004 (Result)	JY2005 (Result)	JY2006 (Plan)	2007/2008 (Result)	2008/2009 (Plan)	Total
(1)Extension routine activity cost	0.00	3,241,262.70	4,493,000.00	5,143,000.00	6,999,094.50	7,311,000.00	27,187,357.20
(2)Extension backstopping cost	0.00	0.00	2,568,000.00	1,275,000.00	977,920.00	1,750,000.00	6,570,320.00
(3)Extension special activity cost	0.00	1,437,838.00	8,419,000.00	4,700,000.00	2,610,116.00	3,112,000.00	20,278,954.00
(4)Research & Monitoring cost	0.00	1,398,469.20	2,730,000.00	2,118,000.00	1,760,272.35	1,248,000.00	9,254,741.55
(5)General routine cost	0.00	8,593,965.30	4,413,000.00	4,804,000.00	5,455,197.95	4,848,000.00	28,114,163.25
(6)Consultation survey cost	0.00	6,929,157.60	0.00	0.00	0.00	0.00	6,929,157.60
(7)Extension office maintenance cost	0.00	3,525,175.00	576,000.00	0	0	0	4,101,175.00
Local activity cost Total	0.00	25,125,867.80	23,199,000.00	18,040,000.00	17,802,000.80	18,269,000.00	66,364,867.80
Equipment	22,055,980.00	7,646,600.00	6,239,496.00	531,250.00	1,630,600.00	0.00	38,103,926.00
Total of JICA	22,055,980.00	32,772,467.80	29,438,496.00	18,571,250.00	19,432,600.80	18,269,000.00	102,838,193.80

(Kenyan Side)

1) Operational / Maintenance costs

Items of Expenditure
[See Attached Sheet with Detailed
Expenditure Items as per GOK
Requirement. 2007/08 - Example]

	FY2003	FY2004/05	FY2005/06	FY2006/07	FY 2007/08	FY 2008/09	Total
1. FD /KFS --- Plan (i)	0.00	1,633,519.40	3,112,000.00	6,200,000.00	6,200,000.00	6,200,000.00	23,545,519.40 (on planning)
2. KEFRI (iii)	0.00	491,000.00	500,000.00	500,000.00	600,000.00	900,000.00	2,991,000.00
Total Cost (GOK) (ii + iii)	0.00	2,324,519.40	3,612,000.00	6,700,000.00	6,800,000.00	7,100,000.00	26,536,519.40

*note: In Expenditure for JFY2003, expenditure for construction of facilities is included.(amount=2,508,442)
In the M/M(4.2.(d)), local cost is calculated as follows:
For FY2004 25,125,867.80-4,254,298(Construction cost) =20,871,569.80
For FY2005 23,199,000 -1,029,904(Construction cost) =22,169,096
For FY2006
5,666,963.70
=48,707,629.5
Sum

Annex 10: Development plan and strategies and Forestry

Plans/Strategies/Guidelines

International Policy and Strategies

Policy/Strategy Title	Level	Relevance
United Nations Framework Convention on Climate Change (UNFCCC)		<ul style="list-style-type: none"> • Kenya is signatory to UNFCCC • Identifies importance of forests in the mitigation and adaptation to climate change • Provides opportunities for resource mobilization for supporting measures aimed at mitigating and adaptation to climate change

Development plan and strategies

Document Title	Level	Relevance
National Development Plan (2002-2008)	National	<ul style="list-style-type: none"> • Biodiversity conservation • Sustainable forestry development and management • Recognition and institutionalization of conventions, etc. relating to sustainable indigenous forest management • Valuation of forest resources
District Development Plans (2002-2008)	District	<ul style="list-style-type: none"> • Protection and conservation of forest areas • Promotion of agro forestry/farm forestry • Environmental management; farmer training; soil and water conservation
Economic Recovery Strategy for Wealth and Employment Creation (2003)	National	<ul style="list-style-type: none"> • Promotion of agro-forestry • Community participation in efficient management of forests • Alternative and affordable energy sources • Afforestation
- Medium Term Plan 2008-2012		<ul style="list-style-type: none"> • Identifies activities for implementing vision 2030 for the initial five year period. • Indicates resource requirements for realization the objectives of the key pillars
- Vision 2030		<ul style="list-style-type: none"> • (on compiling at Kenya Office)

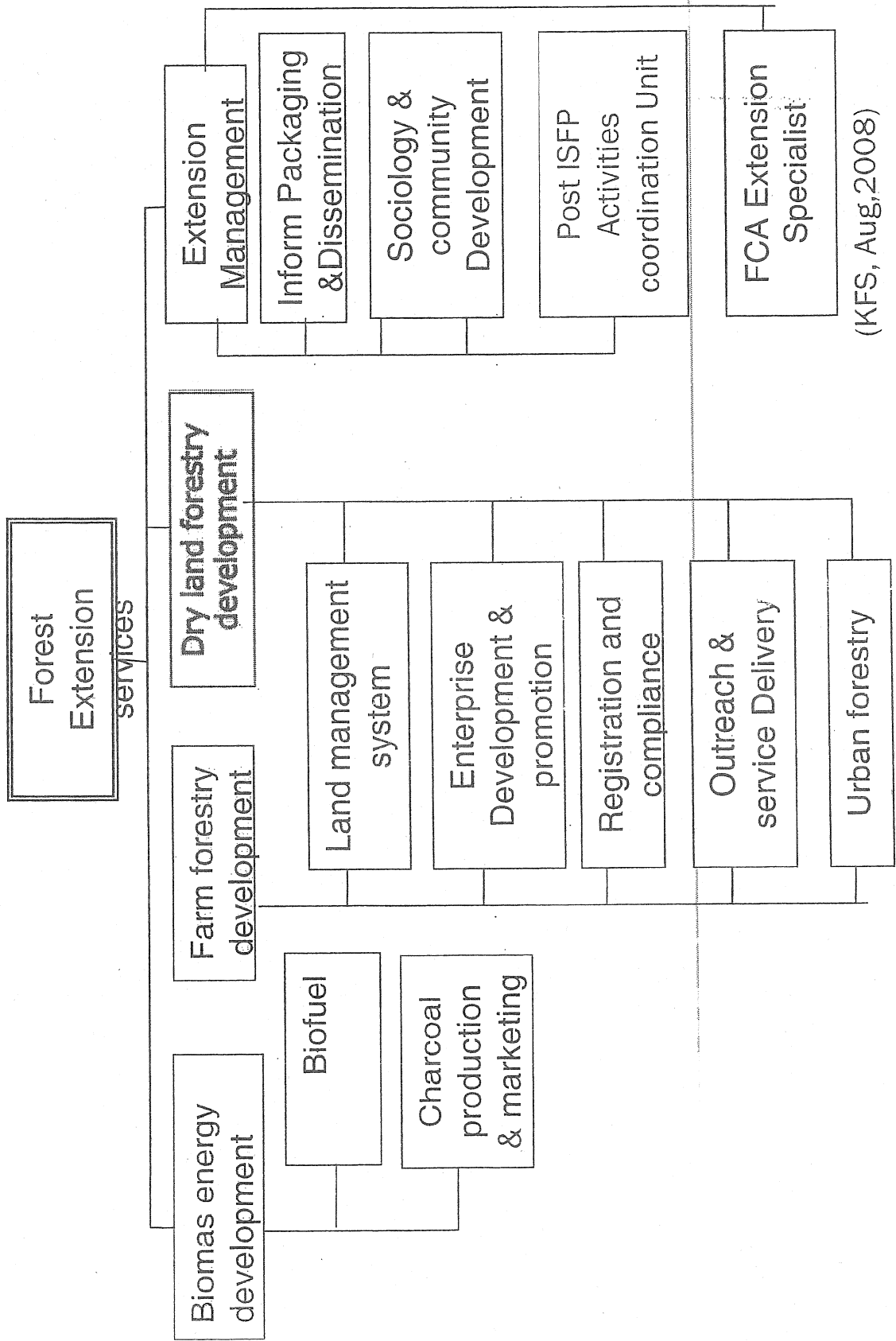
Forestry Plans/Strategies/Guidelines

Document Title	Level	Year	Relevance
- Draft Forest Policy (Session Paper No.4 of 2006)	National	2006	<ul style="list-style-type: none"> Identifies key challenges of the forestry sector. Defines forestry development programs for the promotion of forestry development in Kenya. Specifically farm forestry and dryland forestry programmes are tasked to promote forestry development outside state forests. Pronounces key policy statements indicating government commitments to support forestry development. Identifies importance of stakeholder involvement in for forestry development. Commits government in the domestication of ratified international conventions.
- Draft Kenya Forest Service Strategic Plan 2008-2012			<ul style="list-style-type: none"> Sets out KFS vision, mission, mandate provides a situational analysis for the sector. Defines strategic objectives and strategies for implementing the forestry programmes for the next five years. Promotion of farm forestry and commercial tree planting Promotion of efficient utilisation and marketing of forestry products Promote sustainable management of forests in the drylands Increase productivity of the industrial forest plantations Identifies resource requirement for programme implementation
- Draft Forest Extension Strategy 2007			<ul style="list-style-type: none"> Provides a review of the various forestry extension methods and an analysis of suitability of each method in the various agro-ecological zones
-District Extension Guidelines (KFS, 2007)			(Delete)
-District Extension Implementation			<ul style="list-style-type: none"> Prepared by the 7 non-project districts for the piloting of FFS activities

Document Title	Level	Year	Relevance
Plan (KFS, 2006-)			<ul style="list-style-type: none"> • Provides an analysis of available district resources for extension activities and FFS, including natural resources, infrastructure, and transport. • States annual plan of extension activities and FFS including budgetary arrangements.
-Farm Forestry Field Schools Management Manual (ISFP, 2007)			<ul style="list-style-type: none"> • Provides key features of farm forestry FFS, steps in FFS implementation, FFS formats for farm forestry enterprise planning, budgeting and participatory monitoring and evaluation and reporting.
- Study Guide for Farm Forestry Tree Nursery Establishment			<ul style="list-style-type: none"> • Provides detailed guidelines and procedures for participatory farm and tree nursery forestry enterprise establishment by Farmer Field Schools
Kenya Forestry Master Plan	Department	1994	<ul style="list-style-type: none"> • Enhance the role of the forestry sector in the socio-economic development of Kenya by strengthening the capabilities of the forestry-related agencies, the private sector, the rural people and the NGO's to manage and develop forest resources; contribute to environmental conservation
Technical Orders	Department	1996	<ul style="list-style-type: none"> • Technical instructions/guidelines on organization and administration of forests, management of natural forests, management of forest plantations, research and information
Forest Department General Orders	Department		<ul style="list-style-type: none"> • General instructions/guidelines on forest management e.g. review of forest products royalties
MENR Strategic Plan	Ministerial	2002	<ul style="list-style-type: none"> • Development, conservation, protection and sustainable management of environmental and natural resources
FD Strategic Plan	Department	2002	<ul style="list-style-type: none"> • Management of natural forests and water catchments areas • Development and management of industrial forest plantations • Promotion of farm forestry • Forest protection • Conservation and management of dry-land forests • forest policy and legislation
District Annual	District	Ever	<ul style="list-style-type: none"> • Planning, implementation and monitoring of forestry activities in the

Document Title	Level	Year	Relevance
Work Plans		y year	districts
Kenya Forest Act	National	2005	<ul style="list-style-type: none"> Establishment of Kenya Forest Service; ownership of forests and right to forest produce; creation and management of forests; community participation; enforcement of the Forest Act.
Kenya Forest Service Draft Strategic Plan (2006 - 2011)	Department	2005	<ul style="list-style-type: none"> Guide to efficient forest management and administration Sets out KFS vision, mission, goals and objectives for the period 2006 - 2011 to ensure achievement of positive outcomes for the forestry sector.

Annex 11: Organization Chart for Extension Division, KFS



(KFS, Aug, 2008)

Annex-12: Draft Terms of Reference of the Post ISFP Activities coordination Unit under Extension Management of Forest Extension services

Terms of Reference (TOR)
of
the Post ISFP Activities coordination Unit under Extension Management
of Forest Extension services

1. Background

The Intensified Social Forestry Project (ISFP) has, since its inception in 2004, adopted and customised the Farmers Fields Schools (FFS) extension methodology for farm forestry extension. This methodology has been utilised successfully within the ISFP project area (Tharaka, Mbeere, Kitui districts) and has been widely shared with other projects, particularly the Green Zones Development Support Project (GZDSP) which is funded by the Africa Development Bank. GZDSP is implemented in 24 districts in the high and medium rainfall areas of Kenya. In addition, the Farm Forestry Field Schools (FFS) extension methodology has been introduced through the efforts of ISFP in the Coast Province in Kwale, Malindi, Kilifi districts and in West Pokot and Laikipia districts in the Rift Valley Province where pilot activities have been implemented using government funds and backstopping from ISFP.

Under ISFP alone, by March, 2009 which is the project closure date, 330 farmer field schools shall have graduated with about 4,950 farmers in Tharaka, Mbeere and Kitui districts. These field schools represent about 3% of the households (HH) in the three districts, whereas, about 40% of the HH in the project area shall have been indirectly reached through field days and farmer graduation activities.

In the Kenya Forest Service (KFS), the FFS extension methodology is well appreciated as one of the most viable group-based extension methods because of its good attributes of capacity building, team building and empowerment for farmers, community mobilisation, and monitorability of activities, cost effectiveness, accountability and consistency. In addition, KFS is recognised by FAO as a pioneer organization with respect to the customisation of FFS methodology for farm forestry extension.

Although the formal technical cooperation under ISFP will end in March 2009, it is necessary that KFS retains a functional unit to provide for the continuity of FFS activities. The unit/office will not only support the promotion and mainstreaming of FFS activities in KFS, but will also be a point of reference for the dispatch of information and provide necessary linkages with other organizations which are using the FFS methodology.

2. Assignment of an officer to run the functional unit

An officer will be assigned the duties for running the functional unit.

3. Purpose

1. To institutionalise and promote use of FFS methodology for social forestry extension in KFS
2. To provide a linkage and point of reference for the dispatch and information sharing regarding the outputs of ISFP

4. Scope of Work

Working under the overall direction of the Deputy Director, Forest Extension Services, the functional unit shall be managed by one of the sectional heads of the Extension Management Department, Forest Extension Division with the following duties,

1. Provide backstopping services for the coordination and implementation of Training of Trainers (TOT) in FFS methodology
2. Take a leading role in the development of materials necessary for FFS management and implementation.
3. In consultation with the other projects and Departmental Heads of the Forest Extension Division, coordinate, plan and implement backstopping for FFS activities
4. Custodian of important / key FFS documents particularly the FFS management manual, FFS study guide, and ISFP multimedia materials.
5. In consultation with the District Forest Officers, maintain a register of farmer facilitators (FF) and continuously advise the Deputy Director, Forest Extension Services on the FF activities and requirements.
6. Review the FFS training manual and implementation procedures in partnership with other stakeholders

5. Ex-official members of the functional unit

Internal members

1. Former counterparts of ISFP
2. Officer in-charge of the Japan Social Development Fund (JSDF) Project
3. Departmental Heads of the Forest Extension Division
4. Other Project Managers using the FFS extension methodology
5. JICA Expert – KFS anticipates deployment of Individual Expert by JICA in (or about) April 2009

External members

1. Kenya Forestry Research Institute
2. FFS coordinators from other organisations mainly Ministry of Agriculture (MoA)

6. Office Space

Well equipped room(s) within the Forest Extension Service Division to be assigned by the Deputy Director, Forest Extension Services.

h

h

2. Achievement Grid

Achievement Grid of Outputs (on finalizing)

Planned		Actual		Evaluation
No.	Indicators	Achievement	Issues Countermeasures/assistance/remarks	
Output 1				
Institutional and technical capacities for social forestry extension in Forest Department are strengthened.				
Summary of Achievement of Output1				
In the important 3 Districts, the outcomes of the Output 1 will be achieved by 2009. The Project will assist for area of backstopping of other 7 Districts. Good progress has been made in the development of policy and planning document. 42 KFS officers are trained, 7 Senior officers are trained, 4 KEFRI officers.(as of Aug, 2008) Functional Unit is in process of been developed at KFS Head Quarters. In sum, Most policy and planning documents have been developed and capacity strengthened both at the Headquarters and field level. Some progress has also been made in the 7 Districts outside project area. The outcomes of the Output 1 will therefore be achieved by 2009.				
1.1	By March 2009, Policy and planning for forestry development is elaborated.	<p>For example, New Forest Law is endorsed/adopted/passed by the parliament in July of 2005, signed in November and come into effect in February of 2007. In the district level, the strategy plan of social forestry is formulated and implemented the social forestry in the important 3 Districts (Kitui, Mbeere, and Tharaka) and Region Coast of 3 Districts (Kilifi, Kwale, Malindi).</p> <p>Several policy and planning documents have been formulated as follows;</p> <ul style="list-style-type: none"> - Proposed Forest Policy (Session Paper No.4 of 2006) - Draft Kenya Forest Strategy 2007-2012 - Draft Forest Extension Strategy 2007 - Extension Operational Guidelines (ISFP, 2005) - District Extension Guideline(s) (KFS, 2007)/Farm Forestry Management Manual (ISFP, 2007) - Study Guide for Farm Forestry Tree Nursery Establishment - Strategy for National Transformation: Vision 2030 - Vision 2030 		100
1.2	By March 2009, Implementation plan on social forestry extension prepared, piloted and improved in 10 districts in semi-arid	<p>Implementation plans on social forestry extension are prepared in the important 3 Districts.</p> <p>In other 7 Districts, Malindi, Kilifi, Kwale, Lakipia, West Pokot, Meru South and Rachuonyo, the implementation plan have been prepared and submitted. However, the 4 Districts (Lakipia, West Pokot, Meru South and Rachuonyo) have not fully updated yet.</p>	Because of the turmoil due to post-president election and personnel transfer of a Chief of the Forestry Office,	80

	area.	When Project will strength the technical assistance of updating plan and promoting social forestry extension activities with KFS, Indicator 1.2 has possibilities to be achieved. (IFSP, 2008)	piloting and improving social forest activities for 4 (Lakipia, West Poko, Meru South, and Rachuonyo) are still on initiating.															
1.3	By March 2009, a functional unit for social forestry extension planning, monitoring and evaluation is established at KFS.	A functional unit for social forestry extension planning, monitoring and evaluation is on organizing in KSF.(Source: Organization chart) Draft "Terms of Reference (TOR) for a functional unit for social forestry extension in Kenya Service (KFS)" is drafted as of July 16 th , 2008. In the situation mentioned the above, Indicator 1.3 will be attained by 2009.	100															
	Outputs2.																	
	Social forestry extension activities among individual farmers and farmer groups are promoted.																	
	Summary of Achievement of Output2		100															
2.1	By March 2009, 60 % of individual farmers who participated in the project apply social forestry practiced by groups to their own farms.	Good progress has been achieved in social forestry activities among farmers groups. As a result of FFS, 80% individual and farmer groups have adopted social forestry technology and skills. 234 farmer facilitators have been trained and have facilitated 227 farmer groups. (approximately 3,400 farmers.(KFS, 2008) With the result of the current data as of 2008, Indicator 2.1 has already achieved. Table 2-1 Percentage of Target Farmers and Surrounding Farmers Practicing Farm Forestry on their farms as a result of FFS <table border="1" data-bbox="901 772 1069 1691"> <thead> <tr> <th></th> <th>Kitui</th> <th>Mbeere</th> <th>Taraka</th> <th>Average</th> </tr> </thead> <tbody> <tr> <td>Target Farmers</td> <td>98%</td> <td>90%</td> <td>100%</td> <td>96%</td> </tr> <tr> <td>Surrounding Farmers</td> <td>94%</td> <td>89%</td> <td>87%</td> <td>90%</td> </tr> </tbody> </table> Note: The percentages are computed by the Project based on the source of result of Survey of "Enterprises Practiced by the groups" (Implemented since June 2008y (ISFP,2008))		Kitui	Mbeere	Taraka	Average	Target Farmers	98%	90%	100%	96%	Surrounding Farmers	94%	89%	87%	90%	100
	Kitui	Mbeere	Taraka	Average														
Target Farmers	98%	90%	100%	96%														
Surrounding Farmers	94%	89%	87%	90%														
2.2	By March 2009, 120 farmer groups are involved in social forestry related group network.	According the result of survey by ISFP, Tabulate "ISFP Group Involved in Social Forestry FFS Network by July 2008" indicates as follows.	100															

	Table 2.2 Total Number of ISFP Group Involved in Social Forestry FFS Network by July 2008 in 3 Districts																						
	<table border="1"> <thead> <tr> <th>District</th> <th>Number of Group</th> </tr> </thead> <tbody> <tr> <td>Kitui</td> <td>102</td> </tr> <tr> <td>Mbeere</td> <td>21</td> </tr> <tr> <td>Tharaka</td> <td>41</td> </tr> <tr> <td>total</td> <td>164</td> </tr> </tbody> </table>	District	Number of Group	Kitui	102	Mbeere	21	Tharaka	41	total	164												
District	Number of Group																						
Kitui	102																						
Mbeere	21																						
Tharaka	41																						
total	164																						
2.3	<p>By March 2009, 150 farmer groups are facilitated by farmer groups in the area.</p>	<p>In the result, more than 120 farmer groups are involved in social forestry related group network at this moment of August 2008.</p> <p>According Bar chart and Table of ISFP Coverage Scenario (2008, ISFP), 125 farmers groups are already facilitated by farmers facilitator in the area. 94 farmer groups of Farmer Run FFS have been facilitated by them since April 2008. In the current monitoring result, 234 farmer facilitators have been trained and have facilitated 227 farmer groups. (Approximately 3,400 farmers.(KFS, 2008) Hence, Indicator 2.3 has already been surpassed.</p>	100																				
2.4	<p>By March 2009, 7,500 farmers attend field days conducted by farmer groups participated in the project.</p>	<p>According "List of Field Day Attendance" (ISFP, 2008), visitors are 11,345, estimated visitors are 15,165.</p> <p>Hence, Output 2.4 has possibilities to be achieved by 2009.</p>	100																				
2.5	<p>By March 2009, 70 % of farmers who participated the project appreciate the extension model.</p>	<p>As table 2.5-i) and -ii) shown below, the farmers who learned new technique are more than 70%. It passed Indicator 2.5.</p> <p>Table 2.5-i) Farmers who Participated the Project Appreciate the Project Extension Model (Target Farmers)</p> <table border="1"> <thead> <tr> <th></th> <th>Total answered "Excellent"</th> <th>Total answered "Good"</th> <th>Sample Number</th> <th>Rate of answered "Excellent" and "Good" in the sample</th> </tr> </thead> <tbody> <tr> <td>Kitui</td> <td>18</td> <td>25</td> <td>41</td> <td>80%</td> </tr> <tr> <td>Mbeere</td> <td>29</td> <td>19</td> <td>49</td> <td>98%</td> </tr> <tr> <td>Tharaka</td> <td>16</td> <td>12</td> <td>39</td> <td>71%</td> </tr> </tbody> </table> <p>Source: Result of Survey of "Evaluation of ISFP extension model/package" (June,2008, implemented by the Project)</p> <p>(Average: 83%)</p>		Total answered "Excellent"	Total answered "Good"	Sample Number	Rate of answered "Excellent" and "Good" in the sample	Kitui	18	25	41	80%	Mbeere	29	19	49	98%	Tharaka	16	12	39	71%	100
	Total answered "Excellent"	Total answered "Good"	Sample Number	Rate of answered "Excellent" and "Good" in the sample																			
Kitui	18	25	41	80%																			
Mbeere	29	19	49	98%																			
Tharaka	16	12	39	71%																			

		Table 2.5-ii) Farmers who Participated the Project Appreciate the Project Extension Model (Surrounding Farmers)				
		Total answered "Excellent"	Total answered "Good"	Sample Number	Rate of answered "Excellent" and "Good" in the sample	
		23	52	113	70%	
		21	41	85	68%	
		21	41	96	64%	
Source: Result of Survey of "Evaluation of ISFP extension model/package" (June,2008, implemented by the Project) (Average: 67.3)						
2.6	By March 2009, 60 % of KFS extension staff involved in the project implementation are recognized as qualified farm forestry FFS facilitators.	The check sheet was developed in June and only pretested check was implemented. (see the check sheet: Name of "Check Sheet of Evaluate FFS Facilitators", developed in June, 2008, by ISFP) In the result of pretest, the qualified 66% of KFS extension staff are involved in the project implementation. (Number of DFEO who get point of more than 80% divided by sample number of DFEOs (3) is 66%) (KFS,2008) Although the result of pretest is 66%, the percentage is passed over 60% of Indicator 2.6 of Output 2.				100
2.7	By March 2009, 120 farmers groups are facilitated by KFS extension staff in the area.	91 farmers groups are already facilitated by DFEOs. 22 farmers groups have been facilitated by DFEOs since Sep.2007. In case, it includes farmers groups facilitated by DFEOs in other district (except Kitui, Mbeere, and Tharaka) (IFSP, 2008) According to a bar chart of "ISFP FFS Coverage Scenario", (ISFP, 2007), 216 groups are facilitated by DFEO including with backstopping. More than 17 Extension Run farmer groups and 94 Farmer Run groups will be facilitated by March of 2009. Hence, the number will exceed more than 120 groups by the end of the Project.				100
	Others					
Output 3.						
3 farmers and other stakeholders obtain enough practical knowledge and techniques.						
Summary of Achievement of Output 3						
80% of the 4,965 target farmers appreciate the knowledge and techniques learnt through FFS and many have planted trees on their farms.						100

<p>3.1 By March 2009, 50% of farmers who participated in the project implemented new techniques learned through the project in their own farms.</p>	<p>As table 3.1.1-i)-ii) -iii) an -iv) shown below, the farmers who learned new technique are more than 50%. It passed Indicator 3.1.</p> <p>Table 3.1-i) Percentage of farmers who participated in the project implemented new techniques learned (Extension-Run Target Farmers)</p> <table border="1"> <thead> <tr> <th></th> <th>Total number of over 50% of rate of application</th> <th>Total number of technique items</th> <th>%</th> </tr> </thead> <tbody> <tr> <td>Kitui</td> <td>52</td> <td>58</td> <td>90</td> </tr> <tr> <td>Mbeere</td> <td>71</td> <td>80</td> <td>89</td> </tr> <tr> <td>Tharaka</td> <td>79</td> <td>80</td> <td>99</td> </tr> </tbody> </table> <p>Source: Result of survey of tabulate "Application of FFS techniques on individual farms" (June, 2007), "Extension Run 2G (2nd Generation) and 3G (3rd Generation)"</p> <p>Table 3.1-ii) Percentage of farmers who participated in the project implemented new techniques learned (Extension-Run Surrounding Farmers)</p> <table border="1"> <thead> <tr> <th></th> <th>Total number of over 50% of rate of application</th> <th>Total number of technique items</th> <th>%</th> </tr> </thead> <tbody> <tr> <td>Kitui</td> <td>61</td> <td>70</td> <td>87</td> </tr> <tr> <td>Mbeere</td> <td>48</td> <td>70</td> <td>68</td> </tr> <tr> <td>Tharaka</td> <td>79</td> <td>80</td> <td>99</td> </tr> </tbody> </table> <p>Source: Result of survey of tabulate "Application of FFS techniques on individual farms" (June, 2007), "Extension Run 2G and 3G"</p> <p>Table 3.1-iii) Percentage of farmers who participated in the project implemented new techniques learned (Farmer-Run Target Farmers)</p> <table border="1"> <thead> <tr> <th></th> <th>Total number of over 50% of rate of application</th> <th>Total number of technique items</th> <th>%</th> </tr> </thead> <tbody> <tr> <td>Kitui</td> <td>71</td> <td>80</td> <td>89</td> </tr> <tr> <td>Mbeere</td> <td>63</td> <td>80</td> <td>79</td> </tr> <tr> <td>Tharaka</td> <td>70</td> <td>80</td> <td>88</td> </tr> </tbody> </table> <p>Source: Result of survey of tabulate "Application of FFS techniques on individual farms" (June, 2007), "Extension Run 2G and 3G"</p>		Total number of over 50% of rate of application	Total number of technique items	%	Kitui	52	58	90	Mbeere	71	80	89	Tharaka	79	80	99		Total number of over 50% of rate of application	Total number of technique items	%	Kitui	61	70	87	Mbeere	48	70	68	Tharaka	79	80	99		Total number of over 50% of rate of application	Total number of technique items	%	Kitui	71	80	89	Mbeere	63	80	79	Tharaka	70	80	88	100
	Total number of over 50% of rate of application	Total number of technique items	%																																															
Kitui	52	58	90																																															
Mbeere	71	80	89																																															
Tharaka	79	80	99																																															
	Total number of over 50% of rate of application	Total number of technique items	%																																															
Kitui	61	70	87																																															
Mbeere	48	70	68																																															
Tharaka	79	80	99																																															
	Total number of over 50% of rate of application	Total number of technique items	%																																															
Kitui	71	80	89																																															
Mbeere	63	80	79																																															
Tharaka	70	80	88																																															

		<p>Table 3.1-iv) Percentage of farmers who participated in the project implemented new techniques learned (Farmer-Run Surrounding Farmers)</p> <table border="1" data-bbox="247 840 422 1691"> <thead> <tr> <th></th> <th>Total number of over 50% of rate of application</th> <th>Total number of technique items</th> <th>%</th> </tr> </thead> <tbody> <tr> <td>Kitui</td> <td>62</td> <td>80</td> <td>78</td> </tr> <tr> <td>Mbeere</td> <td>43</td> <td>80</td> <td>54</td> </tr> <tr> <td>Tharaka</td> <td>43</td> <td>80</td> <td>54</td> </tr> </tbody> </table> <p>Source: Result of survey of tabulate "Application of FFS techniques on individual farms" (June, 2007), "Extension Run 2G and 3G"</p>		Total number of over 50% of rate of application	Total number of technique items	%	Kitui	62	80	78	Mbeere	43	80	54	Tharaka	43	80	54		
	Total number of over 50% of rate of application	Total number of technique items	%																	
Kitui	62	80	78																	
Mbeere	43	80	54																	
Tharaka	43	80	54																	
3.2	<p>By March 2009, 70% of farmers who participated in the project appreciate knowledge and techniques provided by the project.</p>	<p>According to the Project, the following accomplishment is stated;</p> <p>Table 3.2 Usefulness of techniques learnt through ISFP FFS, answered: YES</p> <table border="1" data-bbox="614 795 758 1691"> <thead> <tr> <th></th> <th>Yes</th> <th>Total</th> <th>Percentage</th> </tr> </thead> <tbody> <tr> <td>Kitui</td> <td>41</td> <td>50</td> <td>82%</td> </tr> <tr> <td>Mbeere</td> <td>38</td> <td>47</td> <td>81%</td> </tr> <tr> <td>Tharaka</td> <td>35</td> <td>39</td> <td>89%</td> </tr> </tbody> </table> <p>(Average:84%)</p> <p>(Relevance resource: Result of Survey of "Usefulness of techniques learnt through ISFP FFS" (surveyed by the Project, June 2008), untitled table of "Extension Model", ISFP, 2008) Note: (total number of yes "4-1 Have you found any new techniques usefully?") divided by (total sample numbers).</p> <p>With the result of the current data as of 2008, average is 84%. Hence, Indicator 3.2 has possibilities to be achieved.</p>		Yes	Total	Percentage	Kitui	41	50	82%	Mbeere	38	47	81%	Tharaka	35	39	89%	100	
	Yes	Total	Percentage																	
Kitui	41	50	82%																	
Mbeere	38	47	81%																	
Tharaka	35	39	89%																	
<p>Output 4. Information on social forestry extension and related issues is shared among the stakeholders</p> <p>Summary of Achievement Output 4 Although the target number of people visiting the project website was at 4,000, the actual number to date stands at 10,451, indicating and an increased interest in social forestry</p>	<p>4.1 By March 2009, number of stakeholders, who are aware of information on social forestry extension, is increased by 5 %</p>	<p>Based on the Mid-term evaluation, the numbers of the stakeholders are as follows;</p>	80	80																

	<p>compared to 2004 level.</p>	<p>Table 4.1 Numbers of stakeholders who are aware of social forestry extension</p> <table border="1" data-bbox="247 896 319 1635"> <tr> <td>Nairobi</td> <td>Kitui</td> <td>Mbeere</td> <td>Tharaka</td> </tr> <tr> <td>11%</td> <td>7%</td> <td>14%</td> <td>32%</td> </tr> </table> <p>Source: Report of Midterm Evaluation, p89, DIC, July, 2006)</p>	Nairobi	Kitui	Mbeere	Tharaka	11%	7%	14%	32%	
Nairobi	Kitui	Mbeere	Tharaka								
11%	7%	14%	32%								
4.2	<p>By March 2009, 4,000 people visit the project website.</p>	<p>Number of visitors : 8,432 (as of August 4, 2008) We can check the latest number at http://www.isfp-fd.org/awstats.pl/?config=isfp-fd.org (Source: Web site of statistics of visitors number, isfp-fd.org, :http://www.isfp-fd.org/awstats.pl/?config=isfp-fd.org)</p>	80								

*The “Evaluation” in this GRID is based on agreement by Joint Evaluation team of Terminal Evaluation.

*Scale: 20, 40, 60, 80, 100% at this term of Aug, 2008.

*The statistic tables are arranged based on the collected data monitored in the field level to assess the project achievement.

*Some of the data is reported by the Project in this term of Aug, 2008.

Achievement GRID of Project Purpose and Overall Goal (on finalizing)

No.	Planned		Actual		Issues Countermeasures/assistance	Evaluation
	Indicators		Achievement			
<p>Overall Goal: Living standards of the people in semi-arid areas are improved while enhancing sustainable environmental conservation</p> <p>Overall Evaluation of Overall Goal: Farmers are already generating income from sales of productions from social forest products, such as Mango orchard, three numbers and woodlots in the project area. The interest generated will enhance tree planting and sustainable wood production in target and other areas. Hence, Farmers are already generating income from sales of social forest products from e.g. Mango orchard, tree nurseries and woodlots in the project area.</p>						
1.1	By 2014, agricultural contribution to household income in semi-arid areas is improved by 1 % through the use and sale of social forestry products compared to year 2004 level.	In the field survey, some agriculture activities contribute the livelihood are selected by farmers/groups; e.g.) - Maize production - Mango - Daily goods - Poles - Onions, tomatos Some farmers/groups have plan of common account for future investment. They are accessing funding from other resources through FFS.	- Grasses for cattle - Seeding (tree/fruits) - Honey - Poultry (Chicken/eggs)	The data for the statistic of Indicators (1.1/1.2) are not collected during IFSP. Instead, the achievement accomplish statement is verified the information collected in Field Survey by JET members.	100	87
1.2	By 2014, accessible sustainable wood production related to farmlands is predicted to increase by 3 % compared to year 2004 level.	In field survey, factors to contribute the livelihood are found as follows/groups; - Tree nursery enterprise - Woodlots - Fuel woods (e.g. Melia, Gravelia, Yukaliptus, Sennasimea, Jatropaha, etc)		ditto	80	
(1.3)	Others: Social Network	In field survey, factors to contribute the livelihood are found as follows/groups; e.g.) Network, Social, Marketing, and Tree planting			80	

seedling production or tree planting on farm at least one species.:50%	<p>Table 1-iii) -1) Increase rate of numbers of individual farmers and farmer groups who introduce highly marketable tree species (Kitui, Mbeere, and Tharaka).</p> <p>Kitui</p> <table border="1" data-bbox="247 1108 319 1691"> <tr> <td>m/Melia v</td> <td>Neem</td> <td>Eucalyptus</td> <td>Mango</td> </tr> <tr> <td>+33%</td> <td>+56%</td> <td>+11%</td> <td>+28%</td> </tr> </table> <p>Mbeere</p> <table border="1" data-bbox="383 1108 454 1691"> <tr> <td>m/Melia v</td> <td>Neem</td> <td>Eucalyptus</td> <td>Mango</td> </tr> <tr> <td>+56%</td> <td>+56%</td> <td>+33%</td> <td>+56%</td> </tr> </table> <p>Tharaka</p> <table border="1" data-bbox="518 1108 590 1691"> <tr> <td>m/Melia v</td> <td>Neem</td> <td>Eucalyptus</td> <td>Mango</td> </tr> <tr> <td>+44%</td> <td>+56%</td> <td>+56%</td> <td>+33%</td> </tr> </table> <p>Source: "Number of individual farmers who introduced highly marketable tree species for seedling production on farm" (ISFP, 2008)</p> <p>Table 1-iii)-2) Increased rate of individual farmers and farmer groups who plant newly tree species (3 Districts).</p> <p>Kitui</p> <table border="1" data-bbox="782 1108 853 1691"> <tr> <td>m/Melia v</td> <td>Neem</td> <td>Eucalyptus</td> <td>Mango</td> </tr> <tr> <td>+72%</td> <td>+50%</td> <td>+28%</td> <td>+83%</td> </tr> </table> <p>Mbeere</p> <table border="1" data-bbox="917 1108 989 1691"> <tr> <td>m/Melia v</td> <td>Neem</td> <td>Eucalyptus</td> <td>Mango</td> </tr> <tr> <td>+56%</td> <td>+89%</td> <td>+100%</td> <td>+78%</td> </tr> </table> <p>Tharaka</p> <table border="1" data-bbox="1053 1108 1125 1691"> <tr> <td>m/Melia v</td> <td>Neem</td> <td>Eucalyptus</td> <td>Mango</td> </tr> <tr> <td>+78%</td> <td>+7%</td> <td>+44%</td> <td>+56%</td> </tr> </table> <p>Source: "Number of individual farmers who introduced highly marketable tree species for planting on farm" (ISFP, 2008)</p>	m/Melia v	Neem	Eucalyptus	Mango	+33%	+56%	+11%	+28%	m/Melia v	Neem	Eucalyptus	Mango	+56%	+56%	+33%	+56%	m/Melia v	Neem	Eucalyptus	Mango	+44%	+56%	+56%	+33%	m/Melia v	Neem	Eucalyptus	Mango	+72%	+50%	+28%	+83%	m/Melia v	Neem	Eucalyptus	Mango	+56%	+89%	+100%	+78%	m/Melia v	Neem	Eucalyptus	Mango	+78%	+7%	+44%	+56%	<p>iv) Numbers of Individual farmers and farmer groups who implement newly social forestry activities.(or target</p>	100
m/Melia v	Neem	Eucalyptus	Mango																																																
+33%	+56%	+11%	+28%																																																
m/Melia v	Neem	Eucalyptus	Mango																																																
+56%	+56%	+33%	+56%																																																
m/Melia v	Neem	Eucalyptus	Mango																																																
+44%	+56%	+56%	+33%																																																
m/Melia v	Neem	Eucalyptus	Mango																																																
+72%	+50%	+28%	+83%																																																
m/Melia v	Neem	Eucalyptus	Mango																																																
+56%	+89%	+100%	+78%																																																
m/Melia v	Neem	Eucalyptus	Mango																																																
+78%	+7%	+44%	+56%																																																
<p>Table 1-iv) Number of Surrounding and Target Farmers of 3 Districts</p>		<p>Reviewing the Table 1-iv). The 70% of Indicator 1-vi) is already exceeded.</p>	100																																																

	households of farmers):70%	Kitui			Mbeere			Tharaka				
		98%			90%			100%				
2. Data noted below show the increase by 2009 compared to 2004 in Kitui, Mbeere and Tharaka Districts in surrounding area of target groups.												
i)	Number of tree seedling annually produced on farm. :5%	According to the Project, the following accomplishment is stated; Table 2-i) Number of Tree Seedlings Annually Produced on farms in 3 Districts (1st Generation Extension Run, Surrounding farmers)									100	
		Year04	Year05	Year06	Year07							
		Kitui	8,829	40,826	62,111	42,329						
		Mbeere	117	65	3,138	469						
		Tharaka	1325	640	1409	-						
		Note Number of the target farmhouses is 36, which are the first generation of extension-run. Source:"Number of tree seedlings annually planted on farm among 1st Generation Extension run surrounding farmers"(ISFP,2008)										
ii)	Number of trees annually planted on farm. :5%	According to the Project, the following accomplishment is stated; Table 2-ii) Number of Trees annually planted on farm in 3 Districts (1st Generation Extension Run, Surrounding farmers)									100	
		Year03	Year04	Year05	Year06	Year07						
		Kitui	2,295	1,221	1,728	13,325	14,594					
		Mbeere	2,357	552	780	1,996	1,778					
		Tharaka	162	1,365	838	1,766	-					
		Note: Number of the target farmhouses is 36, which are the first generation of extension-run. Source:"Number of tree seedlings annually planted on farm among 1st Generation Extension run surrounding farmers"(ISFP,2008)										
iii)	Individual farmers and farmer groups who introduced highly marketable tree species for seedling production or tree planting on farm at	Reviewing the Table 2-iii)-1) and -2) below, most of increase rate of the highly marketable tree species for seedling production or tree planting on farm is exceeded 5% . Table 2-iii)-1) Increase rate of Number of Seedling Productions Kitui									100	

	<p>least species.:5% one</p>	<table border="1" data-bbox="151 1108 231 1702"> <tr> <td>m/Melia v</td> <td>Neem</td> <td>Eucalyptus</td> <td>Mango</td> </tr> <tr> <td>+31%</td> <td>+53%</td> <td>+17%</td> <td>+17%</td> </tr> </table> <p>Mbeere</p> <table border="1" data-bbox="295 1108 375 1702"> <tr> <td>m/Melia v</td> <td>Neem</td> <td>Eucalyptus</td> <td>Mango</td> </tr> <tr> <td>+56%</td> <td>+11%</td> <td>0%</td> <td>+39%</td> </tr> </table> <p>Tharaka</p> <table border="1" data-bbox="454 1108 534 1702"> <tr> <td>m/Melia v</td> <td>Neem</td> <td>Eucalyptus</td> <td>Mango</td> </tr> <tr> <td>+56%</td> <td>+61%</td> <td>+6%</td> <td>+39%</td> </tr> </table> <p>Source: "Number of seedling productions on farm" (ISFP,2008)</p> <p>Table 2-iii)-2) Increased rate of number of tree plantation</p> <p>Kitui</p> <table border="1" data-bbox="678 1108 758 1702"> <tr> <td>m/Melia v</td> <td>Neem</td> <td>Eucalyptus</td> <td>Mango</td> </tr> <tr> <td>+25%</td> <td>36%</td> <td>22%</td> <td>36%</td> </tr> </table> <p>Mbeere</p> <table border="1" data-bbox="837 1108 917 1702"> <tr> <td>m/Melia v</td> <td>Neem</td> <td>Eucalyptus</td> <td>Mango</td> </tr> <tr> <td>94%</td> <td>50%</td> <td>6%</td> <td>50%</td> </tr> </table> <p>Tharaka</p> <table border="1" data-bbox="997 1108 1077 1702"> <tr> <td>m/Melia v</td> <td>Neem</td> <td>Eucalyptus</td> <td>Mango</td> </tr> <tr> <td>28%</td> <td>56%</td> <td>17%</td> <td>11%</td> </tr> </table> <p>Source: "Number of tree annually planted on farm" (ISFP,2008)</p>	m/Melia v	Neem	Eucalyptus	Mango	+31%	+53%	+17%	+17%	m/Melia v	Neem	Eucalyptus	Mango	+56%	+11%	0%	+39%	m/Melia v	Neem	Eucalyptus	Mango	+56%	+61%	+6%	+39%	m/Melia v	Neem	Eucalyptus	Mango	+25%	36%	22%	36%	m/Melia v	Neem	Eucalyptus	Mango	94%	50%	6%	50%	m/Melia v	Neem	Eucalyptus	Mango	28%	56%	17%	11%		
m/Melia v	Neem	Eucalyptus	Mango																																																	
+31%	+53%	+17%	+17%																																																	
m/Melia v	Neem	Eucalyptus	Mango																																																	
+56%	+11%	0%	+39%																																																	
m/Melia v	Neem	Eucalyptus	Mango																																																	
+56%	+61%	+6%	+39%																																																	
m/Melia v	Neem	Eucalyptus	Mango																																																	
+25%	36%	22%	36%																																																	
m/Melia v	Neem	Eucalyptus	Mango																																																	
94%	50%	6%	50%																																																	
m/Melia v	Neem	Eucalyptus	Mango																																																	
28%	56%	17%	11%																																																	
iv)	<p>Number of individual farmers and farmer groups who newly implement social forestry activities.:5%</p>	<p>Reviewing the Table 2-iv)-1, -2 and -3 below, most of increase rate of surrounding farmers is exceeded 5% of Indicator 2-iv) .</p> <p>Table 2-iv)-1 Percentage of Surrounding Farmers</p> <table border="1" data-bbox="1268 1108 1348 1702"> <tr> <td>Kitui</td> <td>Mbeere</td> <td>Tharaka</td> </tr> <tr> <td>94%</td> <td>89%</td> <td>87%</td> </tr> </table> <p>Note: % is a rate of surrounding farmer.</p> <p>Source: Tabulated "enterprise of surrounding and target farmers in 3 Districts", ISFP, Aug.</p>	Kitui	Mbeere	Tharaka	94%	89%	87%		100																																										
Kitui	Mbeere	Tharaka																																																		
94%	89%	87%																																																		

	<p>2008 (ISFR, 2008)</p> <p>Table 2-iv)-2 Number of Individual Farmers and Surrounding Farmers at the Mid-term Evaluation (Aug, 2006)</p> <table border="1" data-bbox="279 649 383 806"> <thead> <tr> <th></th> <th>Kitui</th> <th>Mbeere</th> <th>Tharaka</th> <th>Total</th> </tr> </thead> <tbody> <tr> <td>Number of Target Farmers</td> <td>18</td> <td>9</td> <td>9</td> <td>36</td> </tr> <tr> <td>Number of Surrounding Farmers</td> <td>36</td> <td>18</td> <td>18</td> <td>72</td> </tr> </tbody> </table> <p>Source: "Number of Sample of Final Evaluation" (The Project, 2008, Aug.)</p> <p>Table 2-iv)-3 Number of Individual Farmers and Surrounding Farmers at the time of August, 2008</p> <table border="1" data-bbox="510 649 614 806"> <thead> <tr> <th></th> <th>Kitui</th> <th>Mbeere</th> <th>Tharaka</th> <th>Total</th> </tr> </thead> <tbody> <tr> <td>Number of Target Farmers</td> <td>30</td> <td>24</td> <td>24</td> <td>78</td> </tr> <tr> <td>Number of Surrounding Farmers</td> <td>60</td> <td>48</td> <td>48</td> <td>156</td> </tr> </tbody> </table> <p>Source: "Number of Sample of Final Evaluation" (The Project, 2008, Aug.)</p>		Kitui	Mbeere	Tharaka	Total	Number of Target Farmers	18	9	9	36	Number of Surrounding Farmers	36	18	18	72		Kitui	Mbeere	Tharaka	Total	Number of Target Farmers	30	24	24	78	Number of Surrounding Farmers	60	48	48	156	
	Kitui	Mbeere	Tharaka	Total																												
Number of Target Farmers	18	9	9	36																												
Number of Surrounding Farmers	36	18	18	72																												
	Kitui	Mbeere	Tharaka	Total																												
Number of Target Farmers	30	24	24	78																												
Number of Surrounding Farmers	60	48	48	156																												
3	<p>Planning on social forestry extension is promoted in 10 districts in semi-arid areas.</p> <p>Plan of the target 3 districts is formulated. (The plans are collected by JET of Terminal Evaluation in Aug, 2008) In other 3 districts (Malindi, Kilifi, Kwale) FFS is run in 2007/8.</p> <p>Because of the confusing during president election term, and personnel transferred of Director of HQ, four districts of seven had some problems. A part of the districts are re-defined in year 2007 and 2008. In the four districts, Laikipia, West Pokot, and Meru South, the social forestry extension in on implementing.</p> <p>If the Project keeps assisting by the end of 2009, Indicator 3 will be realized.</p>	<p>The rests have problems e.g. personnel transfer, post-election turmoil. (The Project)</p>																														

*The "Evaluation" in this GRID is based on agreement by Joint Evaluation team of Terminal Evaluation.

*Scale: 20, 40, 60, 80, 100% at this term of Aug, 2008.

*The statistic tables are arranged based on the collected data monitored in the field level to assess the project achievement.

*Some of the data is reported by the Project in this term of Aug, 2008.