



Asian Forum on Disaster Management and Climate Change Adaptation

**Hyogo, Japan
21-26 Apr 2009**

**Presentation by: LTC A. Razak
Deputy Division Commander
4th Division,
Singapore Civil Defence Force**

Scope

- Introduction
- Disaster Management **Organization & Coordinating System**
- Disaster Management **Capacity In The Community**
- What We Can Offer





(I) Introduction



Singapore

- **Total Land Area: 707 square km.**
- **Location: Southern tip of the Straits of Malacca.**
- **Population: 4.6 million; 2nd most densely populated country in the world.**
- **Official Languages: English, Mandarin, Malay, Tamil.**



A Cosmopolitan City

- ❑ Over 2,000 blocks of high-rise commercial & industrial buildings.
- ❑ More than 8,000 high-rise residential buildings, some beyond 30 storey.
- ❑ By 2010, some residential buildings will be as tall as 70 storeys
- ❑ 3200km road network connecting satellite towns to business centre.



Located outside Pacific Rim of Fire; spared from Natural Disasters like earthquakes & volcanic eruptions...



Disaster management geared towards handling urban hazards.



Major Disasters In Last Decade

- ❑ Nicoll Highway Collapse, 20 April 2004.
- ❑ Pulau Merlimau Fire, 25 October 1988.
- ❑ Hotel New World Collapse, 15 March 1986.





**(II) Disaster Management
Organization &
Coordinating System**

DISASTER MANAGEMENT STRUCTURE

Policy Layer

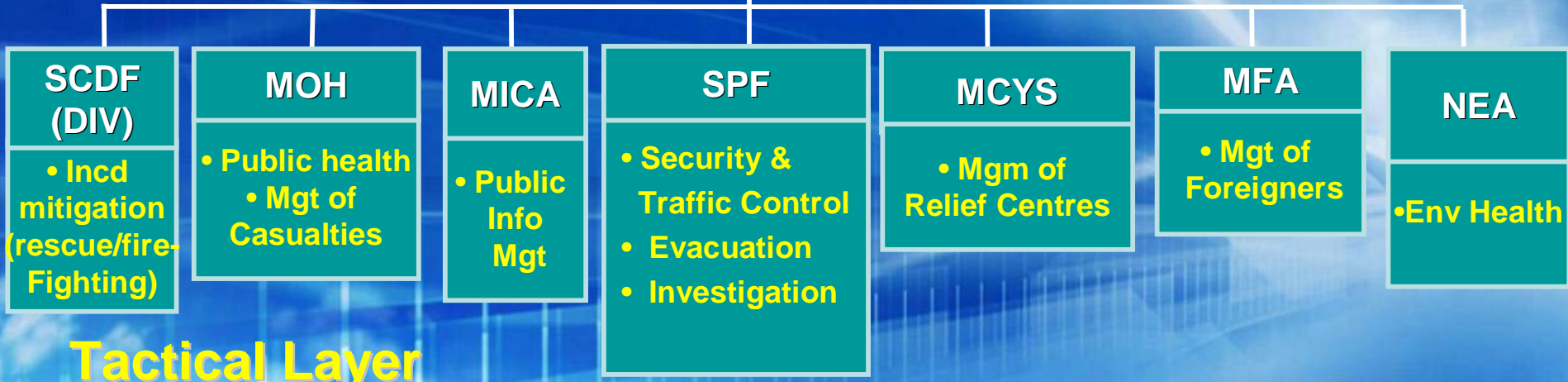
Homefront Crisis Executive Group (HCEG)

HCEG Secretariat

Strategic Layer

Incident Manager (SCDF)

Joint Planning Staff





Under the Ops CE Plan, SCDF is the IM for Civil Emergencies & overall in-charge of the multi-agency response

Operations Civil Emergency (Ops CE) Plan

- **National-level contingency plan.**
- **Spells out roles and functions of respective agencies.**
- **Validated through joint-exercises.**



Ops CE 6 Key Scenarios

- ✓ Major fires
- ✓ Collapsed buildings and structures
- ✓ Major transport incidents
- ✓ Major industrial accidents
- ✓ Toxic industrial chemical release
- ✓ CBRE incidents



Exercise Northstar V – Jan 2006

- **First large-scale Civil Emergency exercise held in Singapore.**
- **Multi-agencies' response to multiple bomb blasts affecting Singapore's land transport system.**
- **More than 2000 emergency responders & 3400 'surprise' commuters.**
- **Foreign guests / observers include the Chief Constable from British Transport Police.**

**Toa Payoh Station
0639 Hrs**

**13 MRT stations CLOSED
during the 1/2 day exercise**

**Toa Payoh Bus Interchange
0650 Hrs**

**Dhoby Ghaut Tunnel
0637 hrs**

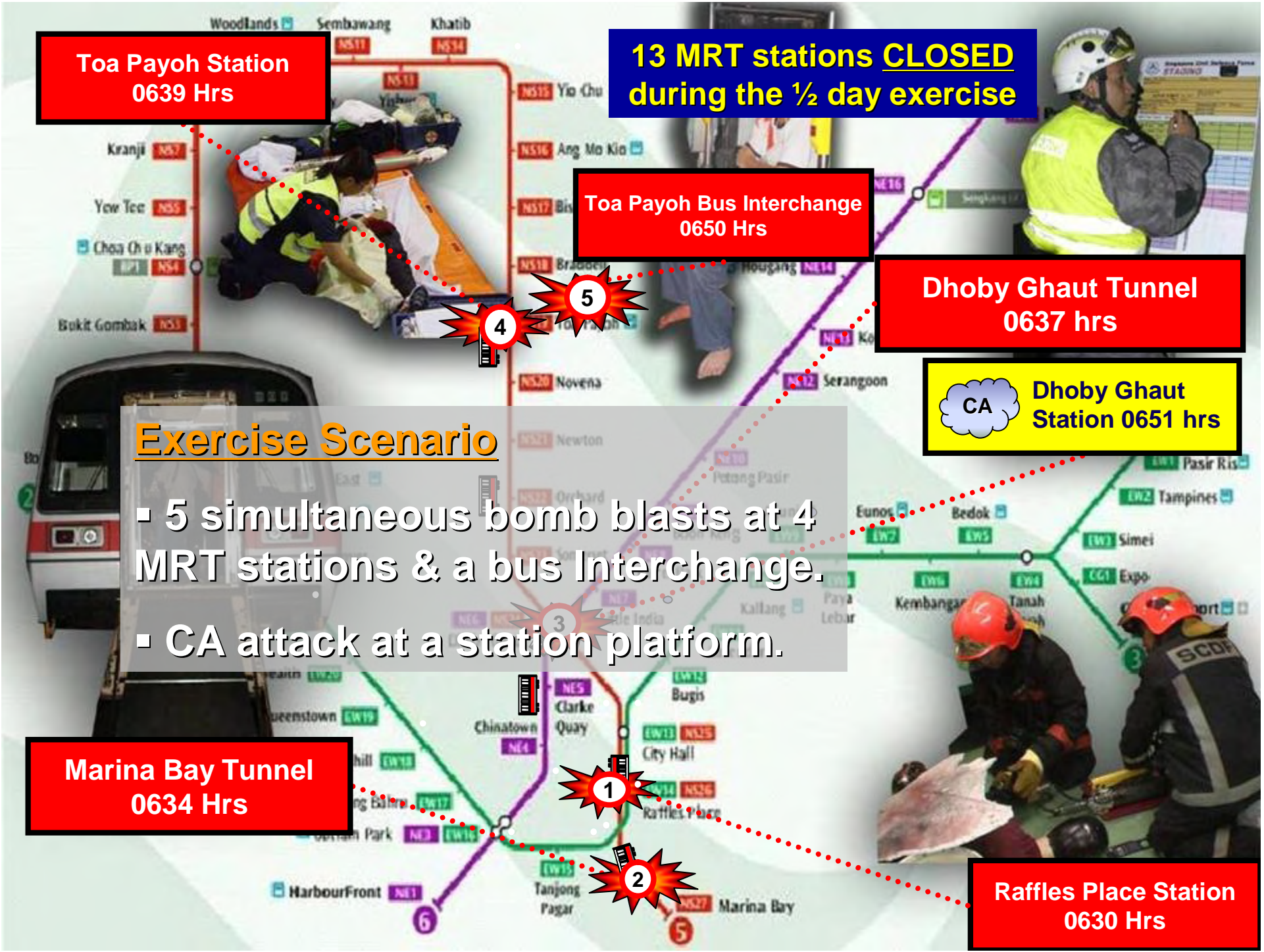
**CA Dhoby Ghaut
Station 0651 hrs**

Exercise Scenario

- 5 simultaneous bomb blasts at 4 MRT stations & a bus Interchange.
- CA attack at a station platform.

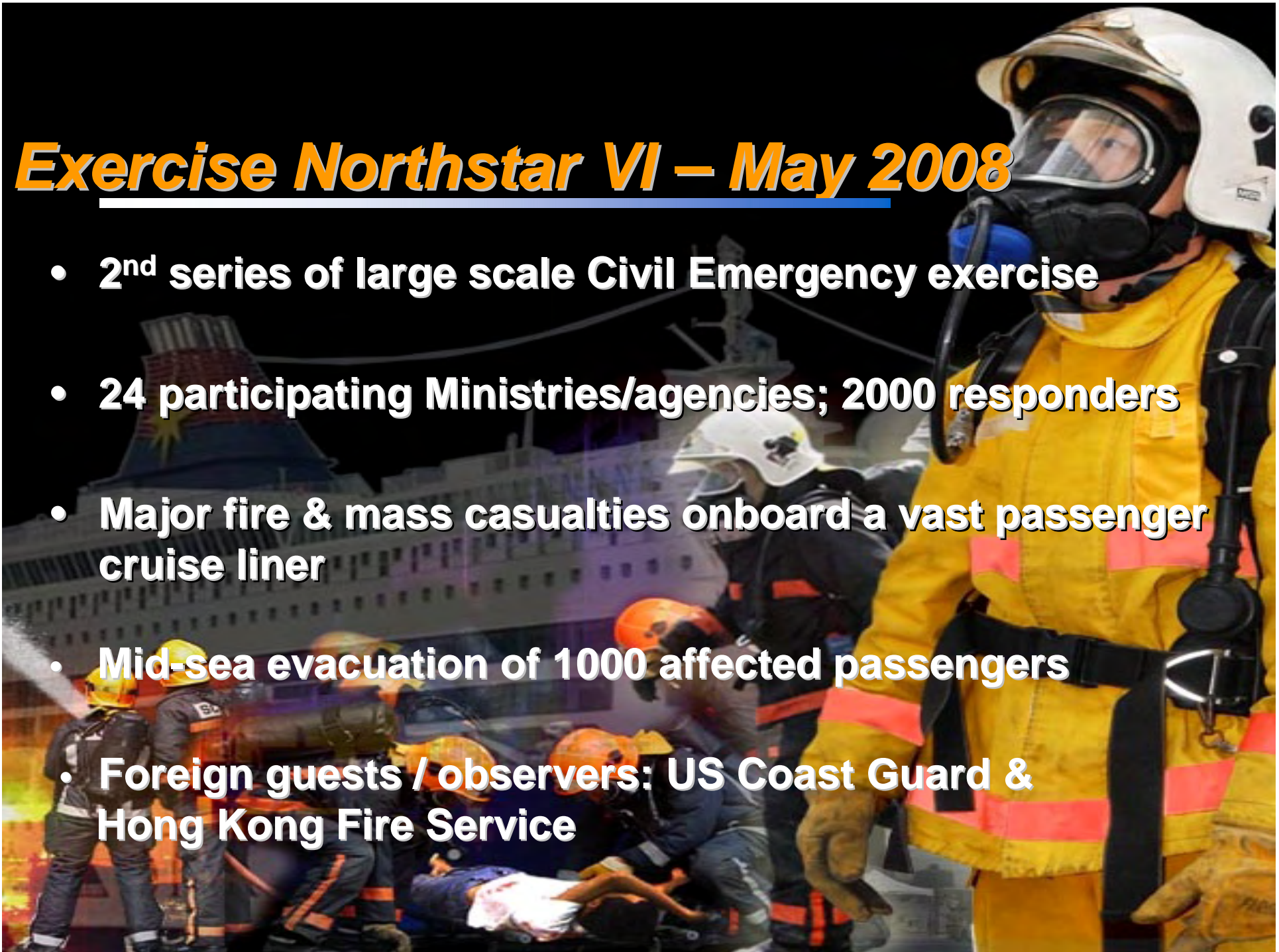
**Marina Bay Tunnel
0634 Hrs**

**Raffles Place Station
0630 Hrs**



Exercise Northstar VI – May 2008

- **2nd series of large scale Civil Emergency exercise**
- **24 participating Ministries/agencies; 2000 responders**
- **Major fire & mass casualties onboard a vast passenger cruise liner**
- **Mid-sea evacuation of 1000 affected passengers**
- **Foreign guests / observers: US Coast Guard & Hong Kong Fire Service**



Infrastructure - Public Warning System (PWS)



- A network of sirens strategically located island-wide & managed by the SCDF.
- A crucial aspect of national disaster management system with regards to public protection.
- Alert populace to **imminent danger** or to tune in to emergency broadcast messages for the adoption of appropriate protective measure.

Infrastructure - PWS (Cont'd)

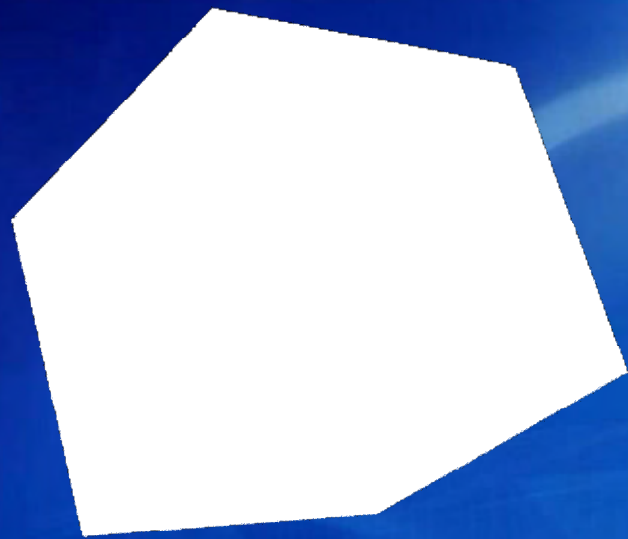
- PWS has 3 signals:

Alarm – to move immediately to civil defence shelter in view of imminent danger.

All Clear – to leave the shelter as threat is over.

Important Message – to immediately tune in to local TV or radio station for emergency broadcast messages/public advisory.

- Hold twice yearly PWS island-wide sounding exercise to familiarize the populace to the signals.



**(III) Disaster Management
Capacity In The Community**



Disaster Management Capacity In The Community

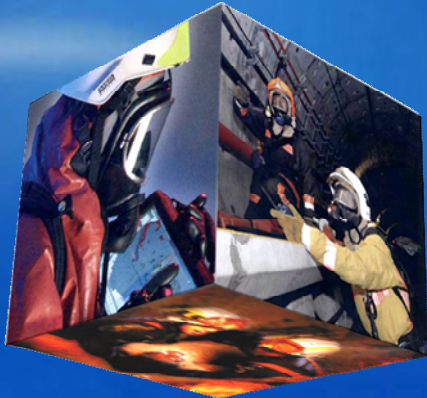
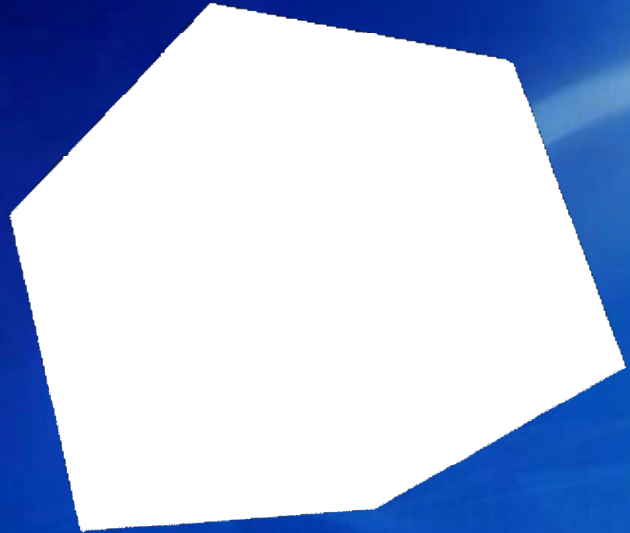
- **Key challenge:** Public generally aloof towards emergency preparedness/disaster management capacity.
- SCDF adopts a **two-pronged approach** to enhance disaster management capacity in the community:
 - Promote “**Community Emergency Preparedness**” as a way of life in Singapore;
 - Generate platform for community participation in emergency preparedness.

Disaster Management Capacity In The Community

4 Target Groups:

- **Residents**
- **Commercial & Industrial**
- **Learning Institutions**
- **Netizens**





(IV) What We Can Offer

- **International Courses/Workshops**
- **Humanitarian Assistance**



International Courses Conducted at Singapore

International Courses	Runs	Partners
Intl Urban Search and Rescue Cse	36	JICA, ADRC & MFA
Intl Hazardous Material Cse	5	MFA – yr 2009
ASEAN Exchange Programme	4	ASEAN Sec
CBRNE Workshop	1	CBRNE Journal
Emergency Response Specialist Cse	33	Accreditation by Charles Sturt University since 28th batch
Basic Officer Cse	42	Accreditation by Charles Sturt University since 40th batch

International Courses Conducted at Singapore

International Courses	Runs	Partners
Intl Officer Commanding Cse	1	-
Intl Incident Command Cse	1	MFA
UN Level 1 Responder Cse	1	UN OCHA
Fire Investigation Specialist Cse	1	-
ASEAN Ex Design Workshop	2	ACDM, UN OCHA
Fire Safety Specialist Cse	2	-

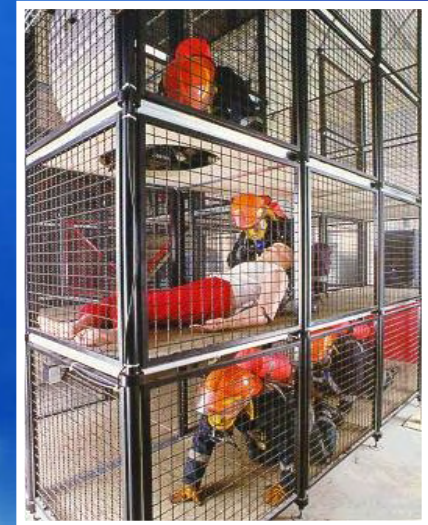
International Courses Conducted at Singapore

International Courses	Runs	Partners
Ship Fire Fighting For FESA	1	FESA
Fire Station Commander Cse	5	-
Emergency Response to Chemical	1	ICA (State Authority OPCW)
Intl Fire-fighting Cse	3	JICA & MFA
Emergency Preparedness and Disaster Mgt Cse	1	MFA, JICA
Intl Disaster Mgt Cse	3	MFA, JICA & Commonwealth Sec

Snap Shot of CDA Field Training Area



Breathing Apparatus
Maze



Profile Of CDA International Participants



From Over 80 Countries, 1500 participants...

Humanitarian Assistance (Operation Lionheart)



Overseas Humanitarian Assistance Missions

- **Philippines Earthquake (1990)**



- **KL Highland Towers Collapse, Malaysia (1993)**

- **Taiwan Earthquake (1999)**



Overseas Humanitarian Assistance Missions (Cont'd)

- Aceh, Indonesia Tsunami (2004)
- Phuket, Thailand Tsunami (2004)



- Nias Sumatra, Indonesia Earthquake (2005)

- Sumatra Bush Fire (2005)



Overseas Humanitarian Assistance Missions (Cont'd)

- **Pakistan, Earthquake (2005)**



Overseas Humanitarian Assistance Missions (Cont'd)

- Central Java, Indonesia Earthquake, (2006)

- Sichuan, China Earthquake, (2008)



UN Highest Classification For Singapore USAR Contingent

- In Jan 2008, SCDF's Operation LionHeart Contingent attained the **"Heavy USAR Classification"** from UN's International Search & Rescue Advisory Group (INSARAG).
- Singapore is the 7th Country in the World & the first rescue team in Asia to earn the **"Heavy USAR Classification"**.





SCDF – The Life Saving Force

Thank you

