

## 添付資料

要請書

事前調査ミニッツ

R/D

実施協議ミニッツ（含むプロジェクト・ドキュメント英文）

事前評価表

プロジェクト・ドキュメント和文





GOVERNMENT OF THE UNION OF MYANMAR  
Ministry of Foreign Affairs  
Yangon

No. 32 33 29 ( 796 )

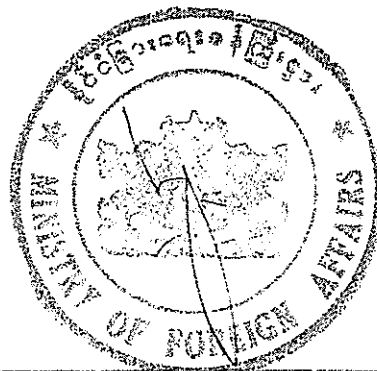
The Ministry of Foreign Affairs of the Union of Myanmar presents its compliments to the Embassy of Japan and, with reference to the JICA Office Note No. JICA.(NY)2-18004 Dated 18 February 2005, has the honour to forward herewith the Application form for Japan's Technical Cooperation sent by the Ministry of Forestry, regarding the Integrated Mangrove Rehabilitation and Management Project through Community Participation in the Ayeyawady Delta and Agricultural Extension Resource Development Project.

Therefore, the Ministry would appreciate if the Embassy of Japan could kindly forward the attached application form.

The Ministry of Foreign Affairs avails itself of this opportunity to renew to the Embassy of Japan the assurances of its highest consideration.

Dated. 16<sup>th</sup> May, 2005.

The Embassy of Japan,  
Yangon.



လျှို့ဝှက်

APPLICATION FORM FOR JAPAN'S TECHNICAL COOPERATION

1. **Date of Entry:** Day 21 Month September Year 2004
2. **Applicant:** The Government of Myanmar
3. **Project Title:** Integrated Mangrove Rehabilitation and Management  
Project through Community Participation in the  
Ayeyawady Delta
4. **Implementing Agency:** Forest Department, Ministry of Forestry  
Address: Bayinaung Road, West Gyogone, Insein Township, Yangon,  
MYANMAR

Contact Person: U San Lwin, Director, Planning & Statistics Division  
Tel. No.: 95-1-681616 Fax No. 95-1-681616  
E-Mail: teaknet@mptmail.net.mm dgfd@forest.gov.mm

5. **Background of the Project**

*(Current conditions of the sector, Government's development policy for the sector, issues and problems to be solved, existing development activities in the sector, etc.)*

preamble

Mangrove vegetation is one of the most precious ecosystems sustaining natural environment and production. However, the mangrove existing in the Ayeyawady delta of the Union of Myanmar is rapidly decreasing due to the activation of economic activities for many years. Provided that the decreasing rate of the mangrove remains unchanged, the mangrove will be lost by the year 2010. Even though no settlement or economic activities in reserved forests are permitted according to the Forest Law of Myanmar, over 200,000 people have already settled in the four reserved forests in the project area. To achieve the conservation and rehabilitation of the mangrove, the security of basic human needs of the inhabitants, the livelihood improvement of the inhabitants is required as the inevitable precondition.

Through the cooperation between the Forest Department (FD) of the Union of Myanmar and a JICA development study 'the study on integrated mangrove management through community participation in the Ayeyawady delta in the Union of Myanmar', a master plan (IMMP: integrated mangrove management plan) will be drawn up in the beginning of 2005 to enable the coexistence of conservation of the mangrove and the livelihood improvement of the people in the project area. To implement the IMMP, the Forest Department has already formulated community forestry (CF) task force for management and support for community forestry (CF) activities. However, Forest Department's capacity is not fully ready for commencement of community forestry activity by itself yet, so a technical cooperation from donors is required to develop the capacity of the

လျှို့ဝှက်

## လျှို့ဝှက်

Forest Department and inhabitants for successful implementation of the IMMP. Especially, the first five years of the IMMP are the most crucial because this period will effect the overall prospective of the IMMP. Hence, the Forest Department requests this project to Japan to enforce and support the Forest Department's community forestry activities sustainably through the implementation of IMMP.

### Government Development Policy

Mangrove rehabilitation is one of the highest prioritized activities/projects in Myanmar that shall be executed immediately for not only improvement of natural and socioeconomic conditions but also mitigations of natural disaster such as cyclone which is causing tremendous damages to the people in the coastal area. On the environmental day ceremony held in May 2004, the prime minister of the Union of Myanmar addressed the environmental conservation in general and mangrove forest conservation and rehabilitation in particular. Recently the Government of Myanmar has set up 10 Environmental Conservation Committees in which Costal Conservation Committee is one with a view to substantially preserve the nations' costal environment. The implementation agency, the Forest Department, the ministry of forestry also confirms that the mangrove rehabilitation project in Ayeyawady delta is one of the highest priority mangrove projects as well as mangrove rehabilitation of Yakhine and Taniatharyi divisions.

The Forest Department has been promoting the community forestry based on the community forestry instruction (CFI) that was issued in 1995 by the director general of the Forest Department. The 30-year National Forestry Sector Master Plan from April 2001 to March 2031 presents a community forestry promotion plan by year for each state/division. Currently for the acceleration of the community forestry, the Forest Department intends to strengthen the legal statusof the instruction for protection of the right of community forestry user group members such as legally protected right for 30 year land use, properties belonging to community forestry areas, and etc. Also, in June 2004, the Forest Department initiated community forestry task force at its township offices to enable the Forest Department for management and support of CF activities by the user group.

### Current condition of the sector

Currently, the so called "delta-type" mangrove vegetation in Myanmar is mainly surviving at the following five reserved forests in Ayeyawady Delta; Pyindaye, Meinmahla, Kadonkani, Pyinalan and Kyakankwinpawk reserved forests, the total area of five reserved forests is approximately 200,000ha. The GIS section of the Forest Department is observing mangrove vegetation through analysis of satellite imageries. According to the observation, during the six years from 1996

လျှို့ဝှက်

လျှို့ဝှက်

to 2001, 60,000 ha, or 30 percents of the mangrove vegetation in the five reserved forests had disappeared, and indicating an average of 10,000 ha of the mangrove area is vanishing annually. If the mangrove vegetation decreasing rate has been maintained at the current rate, by 2009, after 8 years from 2001, all mangrove vegetation will disappear from the area and there remains only unfertile degraded areas.

*Issues and problems to be solved*

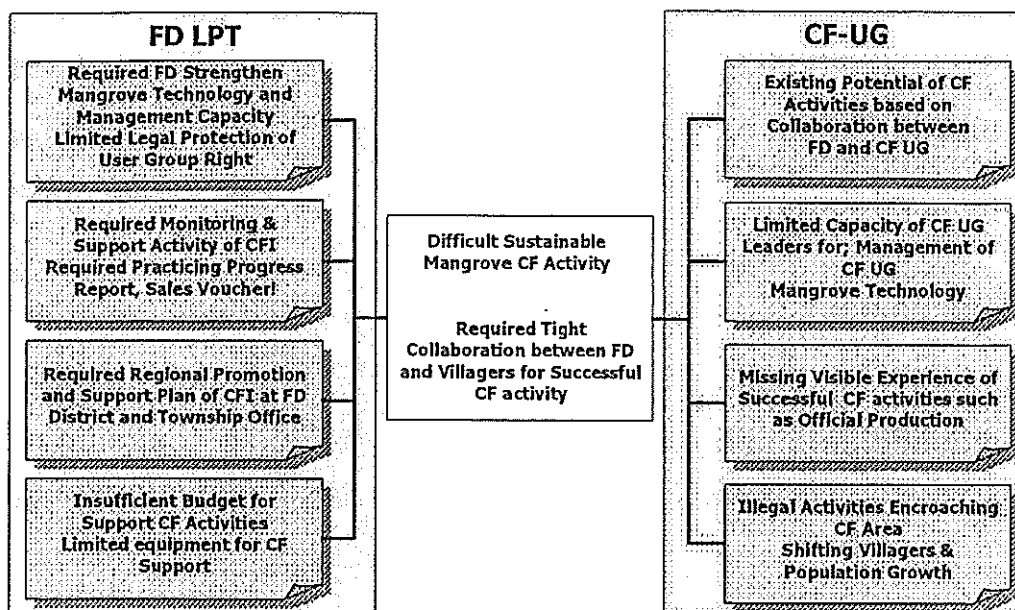
Major reasons of the disappearing mangrove vegetation are analyzed under the ongoing JICA development study as a) encroachment by the population, however people settled in the delta area have limited income chances for their livelihood except for extraction of natural resources through activities such as crab catching, shrimp catching, illegal fire wood cutting, etc. Therefore, it is required to establish a system to meet mangrove conservation and people's demands; b) limited capacity of the Forest Department for management of the reserved forests, such as patrolling capacity, supporting capacity for community forestry users, or insufficient mangrove forestry technology, etc. Therefore, the Forest Department is working on mangrove rehabilitation in collaboration with the JICA development study team.

The following image shows preliminary evaluation results regarding the current potential for practicing sustainable community forestry by stakeholders concerned, based on conducting pilot project during February 2003 up to June 2004 under the JICA development study.

Implication of the evaluation result is shown in the following figure as "Difficult sustainable mangrove management" and "Required tight collaboration between villagers and FD for sustainable community forestry activities". It suggests that the potential of successful and sustainable community forestry will be based on institutional and capacity development of Forest Department and community forestry user group.

လျှို့ဝှက်

လျှို့ဝှက်



Current efforts of the Forest Department for the promotion of the community forestry accumulate up to 86,994 acres of the community forestry certified areas where thirty years land use right is granted to user group. Granting community forestry certificate is the first step of the community forestry activity. After succeeding the first step, the department needs to forward to next stage of the community forestry; implementation of sustainable community forestry.

Meanwhile, the majority of villagers who work as casual labors in targeted reserved forests are facing severe poverty conditions. Nearly the half of their household annual income is less than US\$100. Their daily life is situated at exact difficulty of livelihood of hand-to-mouth, mainly relying on crab catching which has instability for its catch and selling price. Unofficially, land use right of the reserved forest is occupied by fast comers who are currently so called "land owners" for paddy, and the remaining majority of villagers' income chances are limited through casual works at the paddy and the crab catching.

First countermeasure that has to be undertaken to ease such severe poverty conditions is an establishment of stable daily life for the majority of residents who are casual labors, by means of the community forestry.

In principle, "the community forestry" aims at production of forestry products such as firewood, poles, and posts for self-consumption of the community forestry users group. Then surplus of production can bring earnings to user groups. Of course, earning from the production is expected only after the growth of planted seedlings. Firewood and poles can be harvested from thinning or branch cutting after 5 years.

လျှို့ဝှက်

## လျှို့ဝှက်

Meanwhile, the community forestry instruction has a potential for improving mangrove rehabilitation by various kinds of application methods for user groups. Application methods for each benefit period are described in the following:

### Long-term benefits through wood production

- CF Individual and Communal Plantation
- CF Individual Natural Forest Improvement Operation (NFIO)

### Mid-term or seasonal incentives by means of agriculture production

- CF agroforestry: combined land use of certain extent of land by tree-fruits, vegetable and animal husbandry at same time

### Short-term or immediate incomes/incentives by means of fish culture

- CF aqua-agroforestry: for countermeasures against illegal shrimp ponds and immediate income generation
- CF water reservoir: for supply drinking, daily water and small scale irrigation for improvement of water supply, the most limited factor of economic activity and daily life of the area, especially during the dry season

### Protection of National Land and Rehabilitation of Public Infrastructure

- CF Paddy Woodlot: Protection of paddy from soil erosion and improvement of soil fertility.
- CF Public Woodlot: for villages common woodlots such as school, village, river bank stabilization, monastery, church, road side, homestead woodlot, etc

Based on the natural and socioeconomic condition of the community forestry application areas, proper types of community forestry can be applied in accordance with demands, intentions of villagers and technical feasibilities.

### *Current consideration on further collaboration between JICA and the Forest Department on the mangrove rehabilitation*

Now the Forest Department is working on a preparation of the master plan for mangrove rehabilitation namely “integrated mangrove management plan (IMMP)” in collaboration with the JICA development study. The IMMP is drafted in January, 2003 and will be revised by the end of December, 2004, in accordance with results of pilot project that is under going for confirmation about practicability of the drafted IMMP.

The proposed project that the Forest Department requests to Japan for the support will play the key role in the implementation of IMMP. The IMMP would be composed by following three phases, a) development foundation period (Short term, first five years), b) extension period (Mid-term, following five years), and decentralization period (Long-term plan, succeeding 30 years).

လျှို့ဝှက်



## လျှို့ဝှက်

A role of the development foundation period is to establish the foundation of implementation for the community forestry by means of a) institutional development of the both community forestry instruction and Forest Department that enable the Forest Department to manage and support community forestry activities by user group, b) integration of mangrove forest technology, and c) development of model community forestry user groups for future extension and decentralization of community forestry activities.

The first five-year activity of the development foundation period is the minimum and essential activities for mangrove rehabilitation in accordance with committed maximum efforts by the Forest Department. The maximum effort of the Forest Department is setting staffing and budgeting of the Myanmar side for implementation of the proposed project, which the Forest Department requests to Japan for support.

### 6. Outline of the Project

#### (1) Overall Goal

*(Development effect expected as a result of achievement of the "Project Purpose" in several years after the end of the project period)*

**Establishing coexistence of vivid mangrove vegetation and peoples' life in the project target area, particularly at the demonstration community forestry area**

#### (2) Project Purpose

*(Objective expected to be achieved by the end of the project period. Elaborate with quantitative indicators if possible)*

Visible mangrove rehabilitation of 2,400 ha comprising 1,100 ha of CF area and 1,300 ha of FD action-research plantation/forest operations are established

#### (3) Outputs

*(Objectives to be realized by the "Project Activities" in order to achieve the "Project Purpose")*

- 1) Demonstration community forestry user groups engaged in sustainable CF activities are developed and maintained
- 2) Community forestry management and support system of the Forest Department is established and functions sustainably
- 3) Integrated forestry technology of the Ayeyawady delta is established through action-research plantation during the five-year activities

လျှို့ဝှက်

## လျှို့ဝှက်

### (4) Project Activities

*(Specific actions intended to produce each "Output" of the project by effective use of the "Input")*

- 1) Sustainable CF activities are achieved by demonstration CF user groups based on CF prototypes
  - Formulation of demonstration CF user groups as model groups for development of demonstration CF activities
  - Preparation of CF management Plan and drawing map for formulated model CF user groups
  - Implementation of CF activities such as CF plantation, CF NFIO, CF public woodlot, CF paddy woodlot, CF aqua-agroforestry, CF agroforestry, CF FD camp and etc., including production and selling by model CF user groups
  - Monitoring and evaluation of CF activities by the model user groups
  - Patrolling for encroachment through cooperation among Forest Department CF IMMP task force, local authorities and user groups
  - Training of user group member
- 2) Forest Department Capacity Development
  - Activation of FD rules and regulation for CF management and supporting activities
  - Constructions and renovations of FD mangrove nurseries / extension centers in each of four reserved forests (Pyindaye, Kadonkani, Pyinalan, and Kyakankwinpawk)
  - Operation and management of FD mangrove nurseries / extension centers
  - Equipment and material supply for empowerment of FD capacity for acceleration of initiation of CF management and support
  - Public Awareness and patrol
  - Training of FD staffs
- 3) Establishment of integrated forestry technology in the delta area
  - Action-research plantation for development of integrated forestry technology for the Ayeyawady delta

### (5) Input from the Recipient Government

*(Counterpart personnel (identify the name and position of the Project manager), support staff, office space, running expenses, vehicles, equipment, etc.)*

#### Input: User Groups (UG)

Manpower: Labor force for all CF activities including management, patrol, meeting, etc

လျှို့ဝှက်

လျှို့ဝှက်

Input: FD

Manpower: Manpower with salary and administration cost for the project implementation

Office name	Manpower
IMMP FD DG Office	Deputy Director: x 1 Range Officer: x 1
IMMP FD CF Task Force	Assistant Director: x 1 Staff officer: x 1 Range Officer: x 1
Pyindaye CF Task Force	Range Officer: x 1 Deputy Ranger: x 2 Forester: x 2
Kadonkani CF Task Force	Range Officer: x 1 Deputy Ranger: x 2 Forester: x 2
Pyinalan CF Task Force	Range Officer: x 1 Deputy Ranger: x 2 Forester: x 2
Kyakankwinpaw CF Task Force	Range Officer: x 1 Deputy Ranger: x 2 Forester: x 2

Others: Project Implementation frontline offices

Implementation of the Project:

- 1) CF management and support for model community forestry user group for achievement of sustainable CF activities based on CF prototypes
- 2) Implementation of capacity development activities of the Forest Department
  - Implementation of CF management and support activities based on rules and regulation of CF management and support
  - Operation and maintenance of mangrove extension centers/nurseries,
  - Public awareness and patrolling
  - Capacity development of model community forestry user groups
- 3) Establishment of integrated forestry technology of the Ayeyawady delta through action- research plantation

Security: FD secures all kinds of safety condition regarding the input and the activities

Permission: FD obtains all kinds of necessary permission and legal clearance regarding the input and activities

Coordination: FD coordinates related agencies such as local authorities, agriculture and fishery agencies.

လျှို့ဝှက်

## လျှို့ဝှက်

(6) Input from the Japanese Government  
*(Number and qualification of Japanese experts, training (in Japan and in-country) courses, seminars and workshops, equipment, etc.)*

Manpower and Project Cost for the empowerment of stakeholders and the support for implementation in the initial stage of the project

Manpower:

### Foreign Experts:

Expert: Long term

- Chief Advisor

Expert: Short term

- Community based project management
- Mangrove forestry
- Extension
- GIS
- Agroforestry
- Fish culture (aquatic resources)
- Forestry value adding production, marketing and distribution
- Design and cost estimation

### National Experts:

- Procurement and Construction Supervision (S/V) (2)
- S/V for seedling production and UG member support (2)
- Socioeconomic
- Mangrove forestry

### Construction

- Construction of new mangrove extension center/nursery at Pyindaye reserved forest
- Renovation of mangrove extension centers/nurseries in the Kadonkani reserved forest (Byone Mwe Island) and the Kyakankwinpawk reserved forest (Kwa Kwa Lay).

### Plantation/Forestry Activities

- Action-research plantation for development of integrated forest technology of the area and for demonstration FD plantation,
- Development of demonstration CF plantation through community forestry activities

### Equipment

- Nursery
- Plantation/forestry activities
- Extension center
- CF Task Force Transportation Facility (boats, small vehicles, etc)
- Public awareness related equipment
- etc

လျှို့ဝှက်

လျှို့ဝှက်

Operation Materials

- Public Information supporting materials
- Nursery operation materials
- Demonstration CF activities supporting materials
- Training materials
- Satellite Imagery

Training

- Counterpart training at third countries
- Counterpart training in Japan
- UG training at FD mangrove extension centers
- Trips for technology exchange

**7. Implementation Schedule**

Whole implementation period is five years during;

Month      May Year 2005 - Month March Year 2010

Summary of implementation schedule is shown in following table.

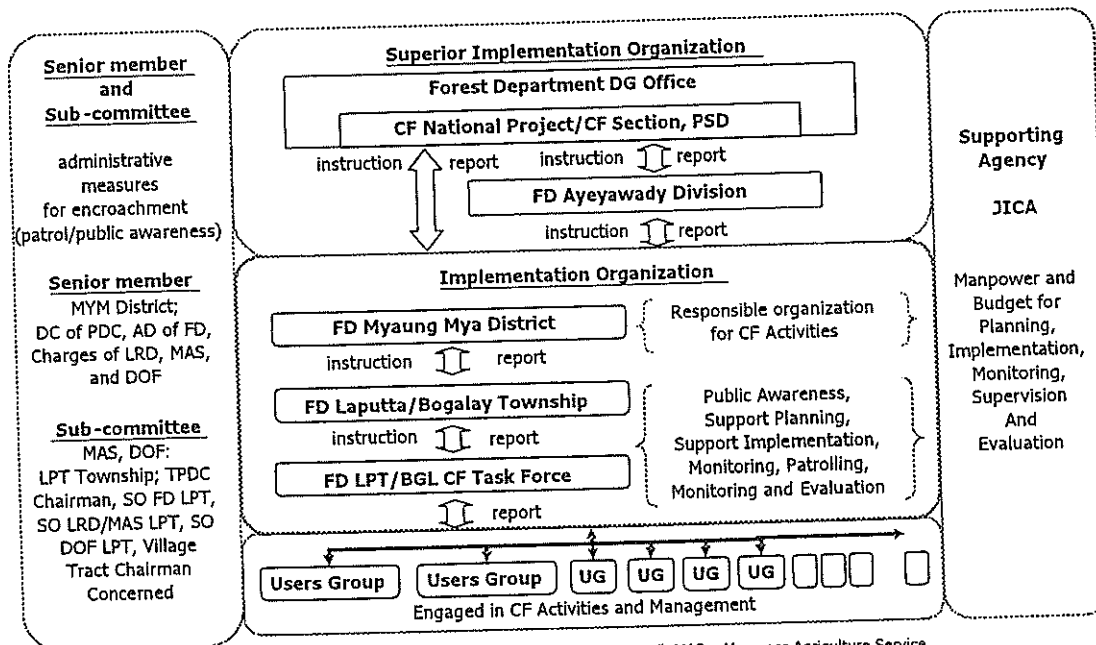
Activity / year	Month	1				2				3				4				5				
		1	3	6	9	1	3	6	9	1	3	6	9	1	3	6	9	1	3	6	9	
1 Overall coordination																						
Project implementation arrangement		—																				
Survey		—																				
Procurement		—																				
2 Achievement of sustainable community forestry activities																						
Public awareness for target villagers			—	—	—																	
Formulation of model CF user groups			—	—	—																	
Preparation of CF management plans and drawing maps			—	—	—																	
Implementatin of CF activities based on the plans including selling						—	—	—	—													
Monitoring and evaluation of the CF activities																						
Patrolling for encroachment																						
Training of CF user groups																						
3 FD capacity development																						
Activation of FD rules and regulations for CF management and support		—																				
Construction and rehabilitation of FD mangrove extension center/nursery			—	—	—																	
Operation and management of FD mangrove extension center/ nursery						—	—	—	—													
Equipment and material supply for CF management and support			—	—	—																	
Public awareness			—	—	—																	
4 Establishment of integrated forestry technology in the delta																						
Research plantation																						
Development of integrated forestry technology of the delta																						
5 Monitoring and evaluation																						
Monitoring																						
Evaluation																						

လျှို့ဝှက်

လျှို့ဝှက်

8. Implementing Agency  
(Budget, staffing, etc.)

The Forest Department will contribute an annual budget for the project implementation, excluding salary for the staff of the CF Task Force is estimated as equivalent to US\$20,000 (Kyat/US\$:1000/1). The Forest Department will prepare the budget based on proposal of IMMP FD CF Task Force. Following chart shows overall organization related to the proposed project that is centered to the implementing agency, the Forest Department, Ministry of forestry and also including supporting agencies such as JICA, related ministries and the Peace and Development Council of districts and townships concerned.



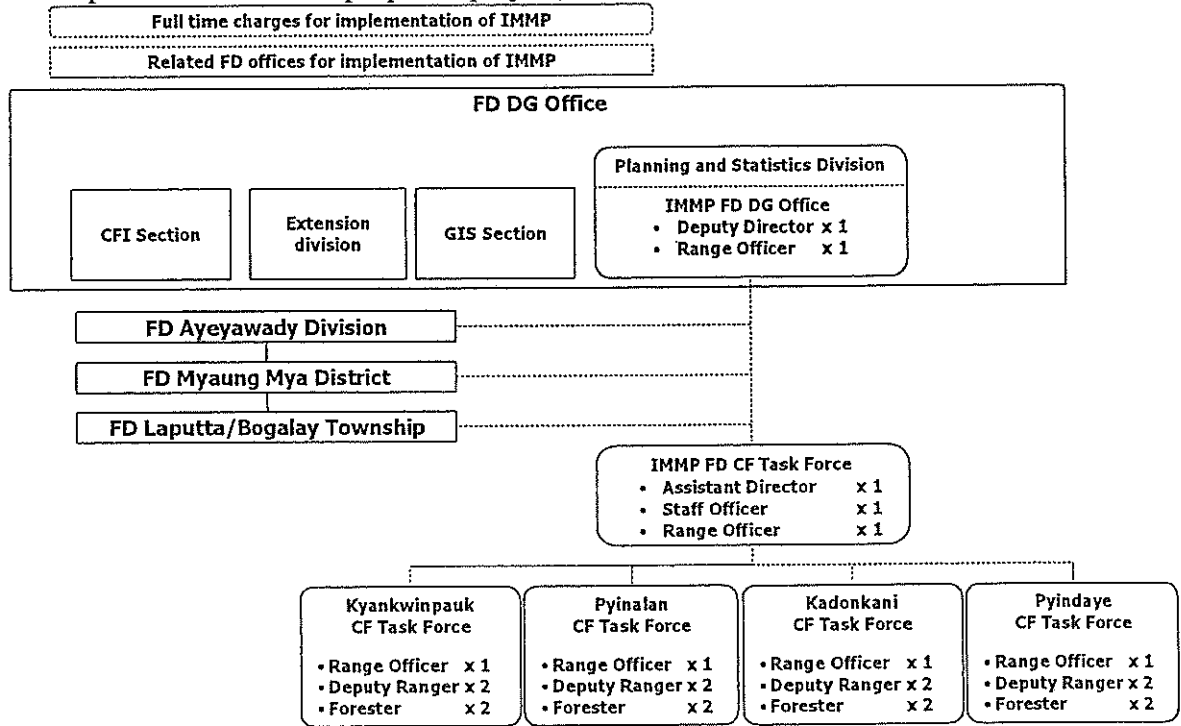
MYM: Myaung Mya District, DC: District Chairman, PDC: Peace and Development Council, MAS: Myanmar Agriculture Service, LRD: Land Record Department, DOF: Department of Fishery, LPT: La putta, BGL: Bogalay, SO: Staff Officer

Note: Now the Forest Department is confirming Pyar Pon district administrative offices to join in senior members as well as Myaung Mya district offices"

လျှို့ဝှက်

လျှို့ဝှက်

Detailed organization chart of the implementing agency, the Forest Department, for implementation of the proposed project, is shown below;



9. Related Activities

*(Activities in the sector by the recipient government, other donors and NGOs)*

Forest department activities: Integrated resource management (IRM) project, promotion of community forestry, Forest Department direct plantation. Community Forestry Training and Extension Project in Dry Zone (COMFORT: supported by JICA)

Other donors: UNDP is currently implementing an integrated community development project (ICDP:MYA/03/001) in the delta.

NGOs: FREDA financed by Tokyo Marine Co. Ltd., assisted by ACTMANG (action for mangrove reforestation)

10. Gender Consideration

*(Any relevant information of the project from gender perspective.)*

In principle, majority of participants to the meetings held by CF user groups are men. Information about the CF activities distributed on the meetings are not reached to family members such as housewives or widow families depend on interview surveys conducted under the JICA development study. However, women possess their own opinions through sharing work for home economic activities such as transplanting of rice seedlings, growing of vegetables, domestic fowl, etc. Women have a potential for contribution to regional economic development and participation by their production activities through formulation of women groups in the area.

လျှို့ဝှက်

လွှဲ.၄၀

**11. Environmental and Social Considerations**

(Please fill in the attached screening format.)—

**12 . Beneficiaries**

*(Population for which positive changes are intended directly and indirectly by implementing the project and gender disaggregated data, if available)*

Population of the proposed project area: Approximately 207,000

Staff of the Forest Department: 1) Direct beneficiaries: 30 staffs (of Myaung Mya district office, Laputta and Bogalay township offices who are directly engaged in the proposed project). 2) Indirect beneficiaries: 300 staffs (of Myaung Mya district office, Laputta and Bogalay township offices)

**13. Security Conditions**

No security problem

**14. Others**

လွှဲ.၄၀



လျှို့ဝှက်

Screening Format

Question 1 Address of a project site

Four reserved forests located in following two townships are project site;  
Laputta Township, Myaung Mya District, Ayeyawady Division, Myanmar  
Bogalay Township, Pyar Pon District, Ayeyawady Division, Myanmar

Question 2 Outline of the project

2-1 Does the project come under following sectors?

Yes  No

If yes, please mark corresponding items.

- Mining development
- Industrial development
- Thermal power (including geothermal power)
- Hydropower, dams and reservoirs
- River/erosion control
- Power transmission and distribution lines
- Roads, railways and bridges
- Airports
- Ports and harbors
- Water supply, sewage and waste treatment
- Waste management and disposal
- Agriculture involving large-scale land-clearing or irrigation
- Forestry
- Fishery
- Tourism

2-2 Does the project include the following items?

Yes  No

If yes, please mark following items.

Involuntary resettlement (scale: \_\_\_\_\_ households, \_\_\_\_\_ persons)

Groundwater pumping (scale: \_\_\_\_\_ m<sup>3</sup>/year)

Land reclamation, land development and land-clearing (scale: \_\_\_\_\_ hectares)

Logging \_\_\_\_\_ (in the project area, officially there is no significant commercial logging by the Forest Department except for phoenix poles which are normally harvested by local people and royalties are paid to the Forest Department for harvesting and trading, however, logging activities occur for local consumption by CF user group through NFIO operation such as thinning or branch cutting, and the operation scale is estimated as 100 hectares in the project area)

2-3 Did the proponent consider alternatives before request?

Yes: Please describe outline of the alternatives

( \_\_\_\_\_ )

No

လျှို့ဝှက်

လျှို့ဝှက်

2-4 Did the proponent have meetings with related stakeholders before request?

Yes  No

If yes, please mark the corresponding stakeholders.

Administrative body

Local residents

NGO

Others ( ministry of agriculture and irrigation and ministry of livestock and fishery related to the project )

Question 3

Is the project a new one or an on-going one? In case of an on-going one, have you received strong complaints etc. from local residents?

New  On-going (there are complaints)  On-going (there are no complaints)

Others

This project is formulated under the JICA development study "the study on integrated mangrove management through community participation (02/2002 - 03/2005) by collaboration of the Forest Department, JICA Myanmar office and the study team.

Question 4 Name of laws or guidelines:

Is Environmental Impact Assessment (EIA) including Initial Environmental Examination (IEE) required for the project according to laws or guidelines in the host country?

Yes  No

If yes, please mark corresponding items.

Required only IEE (  Implemented,  on going,  planning )

Required both IEE and EIA (  Implemented,  on going,  planning )

Required only EIA (  Implemented,  on going,  planning )

Others:

Question 5

In case of that EIA was taken steps, was EIA approved by relevant laws in the host country?

If yes, please mark date of approval and the competent authority.

<input type="checkbox"/> Approved: without a supplementary condition	<input type="checkbox"/> Approved: with a supplementary condition	<input type="checkbox"/> Under appraisal
--	---	--

လျှို့ဝှက်

လှိုင်စန်း

(Date of approval: \_\_\_\_\_ Competent authority: \_\_\_\_\_ )  
 Not yet started an appraisal process  
 Others: ( \_\_\_\_\_ )

Question 6

If a certificate regarding the environment and society other than EIA, is required, please indicate the title of certificate.

Already certified \_\_\_\_\_  Required a certificate but not yet done

Title of the certificate : ( \_\_\_\_\_ )

Not required

Others

( \_\_\_\_\_ )

Question 7

Are following areas located inside or around the project site?

Yes  No  Not identified

If yes, please mark the corresponding items.

National parks, protected areas designated by the government (coast line, wetlands, reserved area for ethnic or indigenous people, cultural heritage) and areas being considered for national parks or protected areas

Virgin forests, tropical forests

Ecological important habitat areas (coral reef, mangrove wetland, tidal flats)

Habitat of valuable species protected by domestic laws or international treaties

Likely salts cumulus or soil erosion areas on a massive scale

Remarkable desertification trend areas

Archaeological, historical or cultural valuable areas

Living areas of ethnic, indigenous people or nomads who have a traditional lifestyle, or special socially valuable area

Question 8

Does the project have adverse impacts on the environment and local communities?

Yes  No  Not identified

Reason:

( Project objective is for achievement coexistence between vegetation and local residence )

လှိုင်စန်း

လျှို့ဝှက်Question 9

Please mark related environmental and social impacts, and describe their outlines.

- Air pollution
- Water pollution
- Soil pollution
- Waste
- Noise and vibration
- Ground subsidence
- Offensive odors
- Geographical features
- Bottom sediment
- Biota and ecosystem
- Water usage
- Accidents
- Global warming
- Involuntary resettlement
- Local economy such as employment and livelihood etc.
- Land use and utilization of local resources
- Social institutions such as social infrastructure and local decision-making institutions
- Existing social infrastructures and services
- The poor, indigenous of ethnic people
- Maldistribution of benefit and damage
- Local conflict of interests
- Gender
- Children's rights
- Cultural heritage
- Infectious diseases such as HIV/AIDS etc.
- Others ( \_\_\_\_\_ )

လျှို့ဝှက်

လျှို့ဝှက်Outline of related impacts:

Local economy: The project contributes to the stability of local economy and livelihood  
 Landuse and utilization: The project supports demarcation of land use based on intention of user group members  
 The poor indigenous ethnic people: The project contributes to the livelihood improvement of those people.  
 Gender: the project support capacity development of women groups  
 Biota and ecosystem, global warming: The project contributes to conservation of mangrove ecosystems and to global warning through reforestation activities

Question 10Information disclosure and meetings with stakeholders

10-1 If the environmental and social considerations are required, does the proponent agree on information disclosure and meetings with stakeholders in accordance with JICA Guidelines for Environmental and Social Considerations?

Yes  No

10-2 If no, please describe reasons below.

[ ]

လျှို့ဝှက်

**Proposed JICA Inputs (5 years) (US\$)**

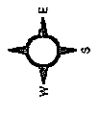
No	Subject	Cost	Remark
a.	Construction and renovation of 4 Extension Centers and Nurseries at 4 Mangrove Reserved Forests	500,000	
b.	Annual meetings for CF and mangrove rehabilitation activities, Joint trainings (in country)	100,000	
c.	Institutional Development of Forest Department for CF Management and support	320,000	
d.	Implementation of Modal CF Users' Groups	500,000	
e.	Travelling of Experts, Counterparts and Forest Department staff	730,000	
f.	Purchasing of Expendable and Non-expendable Equipment	800,000	
h.	Operation and Maintenance costs	300,000	
g.	Physical contingencies	670,000	
j.	Technical assistance	1300,000	
h.	Monitorings, evaluations and the reportings	100,000	
	Total	5,320,000	

**Proposed Myanmar Inputs (5 years) (Myanmar Kyats)**


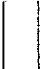


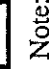
No	Subject	Cost (Million)	Remark
1.	Man Power Support	13.86	
	a. Salaries of Forest Department Staff	31.45	
	b. Local communities' labour contribution for CF		
2.	Provision of locally available rawmaterial		
	a. Wood for Constructions (Government Rate)	7.2	
	b. others		
3.	Diesel and patrol for Forest Department staff field trips (Government Rate)	1.8	
4.	Implementation of Action Research Plantations	33.7	
	Total	88.01	

Filename C/ad ~1

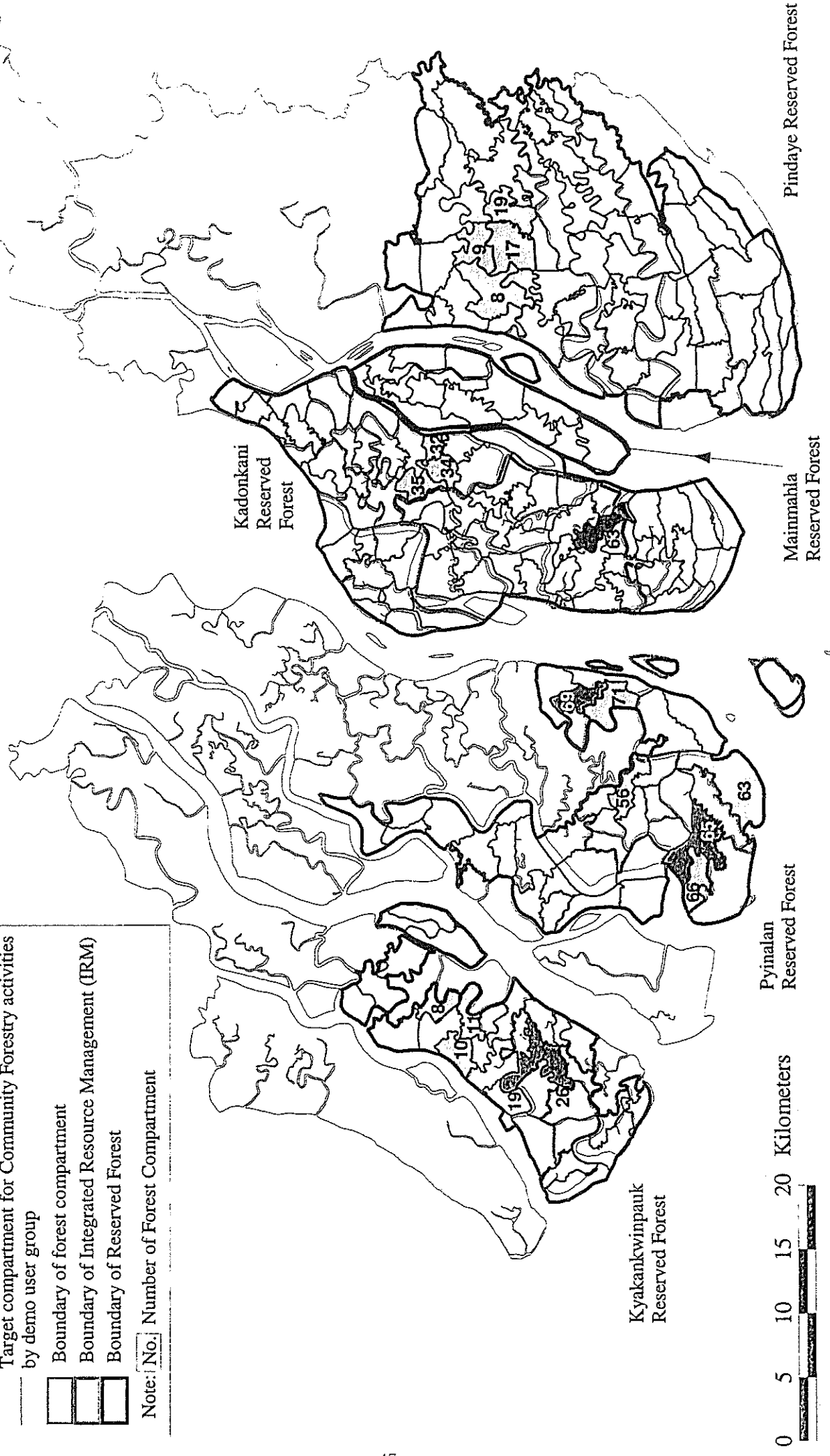
**Target Area for Integrated Mangrove Management Plan (Short Term)**



**Legend**

-  Action research target forest compartment (FD direct plantation)
-  Target compartment for Community Forestry activities by demo user group
-  Boundary of forest compartment
-  Boundary of Integrated Resource Management (IRM)
-  Boundary of Reserved Forest

Note: [No.] Number of Forest Compartment







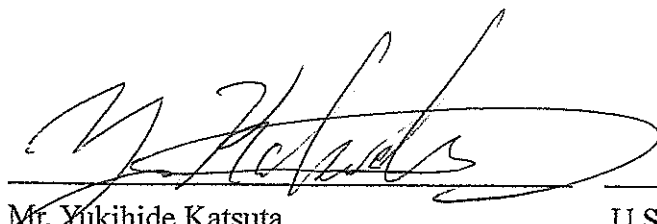
**MINUTES OF MEETINGS  
BETWEEN  
JAPAN INTERNATIONAL COOPERATION AGENCY  
AND  
AUTHORITIES CONCERNED OF THE GOVERNMENT OF  
THE UNION OF MYANMAR  
ON  
THE INTEGRATED MANGROVE REHABILITATION AND MANAGEMENT  
PROJECT THROUGH COMMUNITY PARTICIPATION IN  
THE AYEYAWADY DELTA**

The Japanese Preparatory Study Team (hereinafter referred to as “the Team”) organized by Japan International Cooperation Agency (hereinafter referred to as “JICA”) and headed by Mr. Yukihide Katsuta, visited the Union of Myanmar for the purpose of conducting a preparatory study on the Integrated Mangrove Rehabilitation and Management Project through Community Participation in the Ayeyawady Delta (hereinafter referred to as “the Project”).

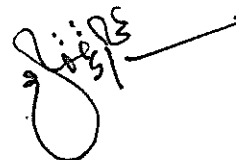
During its stay, both the Team and authorities concerned of the Union of Myanmar had a series of discussions and exchanged views on the Project based on the field observations. Both sides also held a workshop to prepare the drafts of the Record of Discussions (R/D), the Project Design Matrix (PDM) and the Plan of Operation (PO) of the Project.

As a result of the discussions and the workshop, both sides agreed to the matters referred to in the documents attached hereto.

Yangon, 22 December, 2005



Mr. Yukihide Katsuta  
Leader,  
Preparatory Study Team  
Japan International Cooperation Agency



U Soe Win Hlaing  
Director General, Forest Department,  
Ministry of Forestry  
The Union of Myanmar

## THE ATTACHED DOCUMENT

### 1. Draft PDM and PO

The draft PDM and PO of the Project were prepared in consultation with a broad spectrum of stakeholders and through a participatory workshop as attached in Appendix 1 and 2. The PDM and the PO will be used as management tools of the Project, and will be finalized prior to the signing of the R/D.

### 2. Draft Record of Discussions (R/D)

The Record of Discussions (R/D), as the official document which defines the contents of a technical cooperation project, was prepared and agreed through a series of discussions as attached in Appendix 3. The draft R/D will be finalized in the course of further consultations towards the signing.

### 3. Nature of the Project

The Project intends to promote co-existence of the communities and the mangrove forests. The mangrove forests will need to be sustainably managed and poverty alleviated in the Ayeyawady Delta. Therefore, it is essential to promote cross-sectoral approach within the framework of the Project. In particular, cooperation with the fisheries and agricultural sectors is important. It was agreed that the relevant authorities will be a part of the official project administration structure as stipulated in Appendix 4.

### 4. Responsibility of the Forest Department

Fulfilment of the responsibility of the Myanmar side, which is mentioned in the draft R/D is essential for the success of the Project. Especially the following issues were discussed, and agreed by the Myanmar side.

#### (1) Assignment of the counterparts

Quality and continuity of the key Project staff are essential. The Forest Department will assign qualified counterparts to the Project. The Forest Department intends to maintain continuity unless unavoidable reason occurs.

#### (2) Allocation of budget

The Forest Department confirmed that they would provide an annual budget equivalent to US\$20,000 for the Project, excluding salary of the staff. The amount of the budget will increase year by year toward the termination of the JICA's cooperation in order to secure the smooth handing-over of the Project to the Myanmar side.

(3) The Forest Department will take the initiative for cooperating with other concerned agencies such as Department of Fisheries and Myanma Agriculture Service.

#### 5. CF Task Force in the field

In order to operationalize all the activities listed in the PDM, the Forest Department is requested to allocate sufficient resources, in particular human resources at the field level. It was considered that five (5) CF Task Force members in each reserved forest are not sufficient.

#### 6. Project office

Based on the findings from the Team, JICA considers the Forest Department Myaung Mya District office is the most appropriate location for the main office of the Project. FD will consult with relevant authorities of the Government of Myanmar and JICA Myanmar Office in the course of finalization of the R/D.

#### 7. Contribution from JICA for development and renovation of facilities and action research plots

The Forest Department indicated its limitation to allocate budget for the execution of the action research plots and development/renovation of the facilities such as nurseries, extension centres and camps. JICA will consider its financial contribution based on the submission of the plans and the cost estimates.

#### 8. Provisional schedule until the project commencement

- (1) Internal procedure for the approvals in both Government of Myanmar and JICA  
(Up to May, 2006)
- (2) Signing on the R/D (June, 2006)
- (3) Commencement of the Project (October, 2006)

#### List of Appendices

- Appendix 1: Draft Project Design Matrix (PDM)
- Appendix 2: Draft Plan of Operation (PO)
- Appendix 3: Draft Record of Discussions (R/D)
- Appendix 4: Project management structure
- Appendix 5: List of stakeholders consulted by the Team

# Appendix 1 Draft Project Design Matrix (PDM)

## Project Title: Integrated Mangrove Rehabilitation and Management Project through Community Participation in the Ayeyawady Delta

Project Duration: October 2006 - September 2011 (tentative)

Version Number: Version 0 (draft)

Target Area: Four reserved forests (Kyakankwinpauk, Pyinalan, Kadonkani, Pyindaye) in the Ayeyawady Delta

Date: 22 December 2005

### Target Group:

- Communities practicing community forestry in the four reserved forests (Kyakankwinpauk, Pyinalan, Kadonkani, Pyindaye) in the Ayeyawady Delta
- Community Forestry Task Force and other relevant staff from the Forest Department

Narrative Summary	Objectively Verifiable Indicators	Means of Verification	Important Assumptions
<p><b>Overall Goal:</b> The mangrove forests are sustainably managed and poverty is alleviated among the communities in the Ayeyawady Delta.</p>	<p>1. Mangrove forest coverage increases from XX acres in 2006 to YY acres in 2016 in the project target area. 2. Income levels of communities in the Ayeyawady Delta improve than that of 2004.</p>	<p>1. Forests resource assessment by FD (remote sensing ) 2. Agricultural Census report</p>	<p>-Favourable markets exist for CF products. -FD's policy on the management of the four reserved forests does not change significantly. -Sufficient financial and other resources are allocated for the sustainable management of mangrove forests.</p>
<p><b>Project Purpose:</b> The communities and the mangrove forests co-exist in a sustainable manner in the selected areas where project activities were implemented within the Ayeyawady Delta.</p>	<p>1. Mangrove forest coverage increases from XX acres in 2006 to YY acres in 2011 in the selected areas where project activities were implemented. 2. In more than 80% of the CF villages, the percentage of households earning less than the average income of 100,000 kyats equivalent per year (base year 2002) decrease from the base year of CF establishment. 3. Among the CF participants supported by the Project, more than 80% consider CF useful.</p>	<p>1. Project reports 2. Results from the CF Impact survey 3. Results from the CF Impact survey</p>	<p>- No drastic increase in the population within the four reserved forests. - External pressure to convert the mangrove forests to other land uses does not increase. - Prices for CF products do not change significantly.</p>
<p><b>Outputs:</b> 1. The selected communities practice environmentally and economically sustainable community forestry (CF). 2. The management and the support system of the Forest Department (FD) for CF is effective.</p>	<p>1-1 More than XX acres of mangrove forests are rehabilitated and managed through CF by the end of the Project. 1-2 More than XX% of all new CF user groups gain profit from CF activities by the end of the Project. 2-1 More than 80% of all registered user groups are active in CF. 2-2 New communities continue to express interest in forming CF user groups each year.</p>	<p>1-1 CF management plans, monitoring reports 1-2 Project reports 2-1 Project reports 2-2 Project reports</p>	<p>3-1 Project reports</p>
<p>3. Some sivilcultural techniques for the rehabilitation of the degraded and the management of the mangrove and its associated forests for the Ayeyawady Delta are established. 4. A coordination mechanism is established among key sectors to address the underlying causes of mangrove deforestation in the Ayeyawady Delta.</p>	<p>3-1 Technical reports/ draft guidelines are prepared based on action research findings. 4-1 Interdisciplinary committee is officialized. 4-2 Specific recommendations are made and/or actions are taken by the committee.</p>	<p>4-1 Authorities' letter of announcement 4-2 Meeting records</p>	

Activities:	Inputs (Myanmar side)	Inputs (Japanese side)
<p>1-1 Select villages to introduce CF from the ones that express interest.</p> <p>1-2 Conduct baseline survey on the basic socio-economic conditions of the selected communities.</p> <p>1-3 Mobilize the selected communities for user group formation and conduct introductory meetings on CF.</p> <p>1-4 Introduce participatory planning processes for the user groups on CF to facilitate preparation of proposals for CF certificates and formulation of management plans.</p> <p>1-5 Facilitate implementation of the management plans formulated by the user groups.</p> <p>1-6 Organize meetings to assess various socio-economic needs of the selected communities and design programmes to strengthen their income generating capacities.</p> <p>1-7 Implement various programmes to enhance the income levels of the user groups in the selected villages in partnership with cooperating agencies such as Department of Fisheries, Myanma Agriculture Service, and other institutions.</p> <p>1-8 Establish monitoring and evaluation systems for the management plans formulated by the user groups.</p> <p>1-9 Conduct impact survey regarding the effects of CF on the livelihoods of the selected communities.</p>	<p><b>Personnel</b></p> <ol style="list-style-type: none"> <li>1. Project Director</li> <li>2. Project Manager</li> <li>3. Project Coordinator</li> <li>4. Field Project Manager</li> <li>5. CF Task Force members</li> <li>6. Other personnel mutually agreed upon as necessary</li> </ol> <p><b>Land, Building and Facilities</b></p> <ol style="list-style-type: none"> <li>1. Office building and facilities necessary for the implementation of the Project</li> <li>2. Office space and necessary facilities for the Japanese experts and related staff members</li> <li>3. Land for the action research</li> <li>4. Jetty and space necessary for storage of boats and vehicles</li> <li>5. Other facilities mutually agreed upon as necessary</li> </ol> <p><b>Local Operational Costs</b></p> <p>Minimum of US\$100,000 equivalent in 5 years</p>	<p>-No significant natural hazards occur that will impact the rehabilitation of mangrove forests (e.g. cyclones, tsunami, floods, pests, diseases).</p> <p>-Relevant authorities and stakeholders are supportive to promote sustainable management of mangrove forests.</p>
<p>2-1 Review the contents of the Integrated Mangrove Management Plan (IMMP) among all CF Task Force members and break down necessary activities for the first phase, by each reserved forest.</p> <p>2-2 Confirm the various roles and responsibilities of the CF Task Force at each level to implement the IMMP.</p> <p>2-3 Assess the needs of the CF Task Force members (e.g. financial, logistics and human resource development).</p> <p>2-4 Develop training materials on the standard operational procedures for CF for the mangrove forests.</p> <p>2-5 Train field level staff on CF extension services and support.</p> <p>2-6 Facilitate FD to carry out public information campaigns regarding CF and the conservation of mangrove forests.</p> <p>2-7 Draft detailed standard operational procedures for CF for the mangrove forests</p>	<p><b>Personnel</b></p> <ol style="list-style-type: none"> <li>1. Chief Advisor</li> <li>2. Participatory community development</li> <li>3. Mangrove forestry</li> <li>4. Coordinator</li> <li>5. Other experts in specific fields (e.g. Extension, GIS, Agro-forestry, Fish culture, Forestry Value-added Production, Marketing and Distribution) upon mutual agreement</li> </ol> <p><b>Machinery and Equipment</b></p> <ol style="list-style-type: none"> <li>1. Boat(s)</li> <li>2. Vehicle(s)</li> <li>3. Other equipment would be provided if necessary upon mutual agreement.</li> </ol> <p><b>Training in Japan</b></p>	

<p>3-1 Conduct surveys for identification of silvicultural models for both community and non-community forestry with respect to the eco-geographical / management zones in the Ayeyawady Delta.</p> <p>3-2 Prepare the specific action research test designs with respect to each silvicultural model (e.g. seedling production, planting designs and methods, thinning, pruning, forest management).</p> <p>3-3 Plan execution of the tests.</p> <p>3-4 Prepare the facilities (e.g. nurseries).</p> <p>3-5 Prepare plots and test materials (e.g. seeds, seedlings) and execute the test plots.</p> <p>3-6 Conduct patrols and periodic technical monitoring /preliminary assessment.</p> <p>3-7 Prepare draft technical guidelines of some action research items (e.g. species identification, nursery, seed collection and management, planting techniques).</p>	<p><b>Preconditions:</b></p> <ul style="list-style-type: none"> <li>-Local communities accept CF Instructions.</li> <li>-No significant changes occur in the Government's policy on CF.</li> </ul>
<p>4-1 Formulate an inter-disciplinary committee consisting of relevant authorities (e.g. agriculture, fisheries, settlement and land records) at the District level to examine the underlying causes for mangrove deforestation in the Ayeyawady Delta.</p> <p>4-2 Update the most recent land use information on periodic basis, including overall forest resource assessment of the region and mangrove forest conversion.</p> <p>4-3 Conduct coordination among the committee members upon demand to coordinate instructions for the implementation of appropriate land use policies.</p> <p>4-4 Organize seminars to promote synergies among the relevant sectors for the sustainable management of the mangrove ecosystem in the Ayeyawady Delta.</p>	



	FY 2006			FY 2007			FY 2008			FY 2009			FY 2010			FY 2011								
	4	5	6	7	8	9	10	11	12	1	2	3	4	5	6	7	8	9	10	11	12	1	2	3
2-6 Facilitate the Forest Department to carry out public information campaigns regarding CF and the conservation of mangrove forests.																								
2-7 Draft detailed standard operational procedures for CF for the mangrove forests.																								
3. Some silvicultural techniques for the rehabilitation of the degraded and the management of the mangrove and its associated forests for the Ayeayawady Delta are established.																								
3-1 Conduct surveys for identification of silvicultural models for both community and non-community forestry with respect to the ecological / management zones in the Ayeayawady Delta.																								
3-2 Prepare the specific action research test designs with respect to each silvicultural model (e.g. seedling production, planting designs and methods, thinning, pruning, forest management).																								
3-3 Plan execution of the tests.																								
3-4 Prepare the facilities (e.g. nurseries).																								
3-5 Prepare plots and test materials (e.g. seeds, seedlings) and execute the test plots.																								
3-6 Conduct patrols and periodic technical monitoring /preliminary assessment.																								
3-7 Prepare draft technical guidelines of some action research items (e.g. species identification, nursery, seed collection and management, planting techniques).																								
4. A coordination mechanism is established among key sectors to address the underlying causes of mangrove deforestation in the Ayeayawady Delta.																								
4-1 Formulate an inter-disciplinary committee consisting of relevant authorities (e.g. agriculture, fisheries, settlement and land records) at the District level to examine the underlying causes for mangrove deforestation in the Ayeayawady Delta.																								
4-2 Update the most recent land use information on periodic basis, including overall forest resource assessment of the region and mangrove forest conversion.																								
4-3 Conduct coordination among the committee members upon demand to coordinate instructions for the implementation of appropriate land use policies.																								
4-4 Organize seminars to promote synergies among the relevant sectors for the sustainable management of the mangrove ecosystem in the Ayeayawady Delta.																								



**<Draft>**  
**RECORD OF DISCUSSIONS**  
**BETWEEN**  
**JAPAN INTERNATIONAL COOPERATION AGENCY**  
**AND**  
**AUTHORITIES CONCERNED OF THE GOVERNMENT OF**  
**THE UNION OF MYANMAR**  
**ON**  
**THE INTEGRATED MANGROVE REHABILITATION AND MANAGEMENT**  
**PROJECT THROUGH COMMUNITY PARTICIPATION IN**  
**THE AYEYAWADY DELTA**

With regard to the Minutes of Meetings between the Preparatory Study Team (hereinafter referred to as the "Team") and the Government of the Union of Myanmar (hereinafter referred to as the "Myanmar") dated on 22 December 2005, Japan International Cooperation Agency (hereinafter referred to as "JICA") had series of discussions through the Resident Representative of JICA Myanmar Office, with Myanmar authorities concerned with respect to desirable measures to be taken by JICA and the Government of Myanmar for the successful implementation of the Integrated Mangrove Rehabilitation and Management Project through Community Participation in the Ayeyawady Delta.

As a result of the discussions, JICA and the relevant Myanmar authorities concerned agreed to recommend to their respective Governments the matters referred to in the document attached hereto.

Yangon, , 2006

---

Mr. Takahiro Sasaki  
 Resident Representative,  
 Myanmar Office  
 Japan International Cooperation Agency

---

U Soe Win Hlaing  
 Director General, Forest Department,  
 Ministry of Forestry  
 The Union of Myanmar

Cooperating agencies:

---

U Than Tun  
 Director General,  
 Department of Fisheries  
 Ministry of Livestock and Fisheries  
 The Union of Myanmar

---

U Ohn Than  
 Managing Director,  
 Myanma Agriculture Service  
 Ministry of Agriculture and Irrigation  
 The Union of Myanmar

## THE ATTACHED DOCUMENT

### I. COOPERATION BETWEEN JICA AND THE GOVERNMENT OF MYANMAR

1. The Government of Myanmar will implement the Integrated Mangrove Rehabilitation and Management Project through Community Participation in the Ayeyawady Delta (hereinafter referred to as "the Project") in cooperation with JICA.
2. The Project will be implemented in accordance with the Master Plan which is given in Annex I.

### II. MEASURES TO BE TAKEN BY JICA

In accordance with the laws and regulations in force in Japan, JICA will take, at its own expense, the following measures according to the normal procedures under the Colombo Plan Technical Cooperation Scheme.

#### 1. DISPATCH OF JAPANESE EXPERTS

JICA will provide the services of the Japanese experts as listed in Annex II.

#### 2. PROVISION OF MACHINERY AND EQUIPMENT

JICA will provide such machinery, equipment and other materials (hereinafter referred to as "the Equipment") necessary for the implementation of the Project as listed in Annex III. The Equipment will become the property of the Government of Myanmar upon being delivered C.I.F. (cost, insurance and freight) to the Myanmar authorities concerned at the ports and/or airports of disembarkation.

#### 3. TRAINING OF MYANMAR PERSONNEL IN JAPAN

JICA will receive the Myanmar personnel connected with the Project for technical training in Japan.

### III. MEASURES TO BE TAKEN BY THE GOVERNMENT OF MYANMAR

1. The Government of Myanmar will take necessary measures to ensure that the self-reliant operation of the Project will be sustained during and after the period of Japanese technical cooperation, through the full and active involvement in the Project by all related authorities, beneficiary groups and institutions.
2. The Government of Myanmar will ensure that the technologies and knowledge acquired by the Myanmar nationals as a result of Japanese technical cooperation will contribute to the economic and social development of Myanmar.
3. The Government of Myanmar will grant in Myanmar privileges, exemptions and benefits to the Japanese experts referred to in II-1 above and their families, which are no less favorable than those accorded to experts of third countries working in Myanmar under the Colombo Plan Technical Cooperation Scheme.
4. The Government of Myanmar will ensure that the Equipment referred to in II-2 above will be utilized effectively for the implementation of the Project in consultation with the Japanese experts referred to in Annex II.
5. The Government of Myanmar will take necessary measures to ensure that the knowledge and experience acquired by the Myanmar personnel from technical training in Japan will be utilized effectively in the implementation of the Project.
6. In accordance with the laws and regulations in force in Myanmar, the Government of Myanmar will take necessary measures to provide at its own expense:
  - (1) Services of the Myanmar counterpart personnel and administrative personnel as listed in Annex IV;
  - (2) Land, buildings and facilities as listed in Annex V; and

- (3) Supply or replacement of machinery, equipment, instruments, vehicles, tools, spare parts and any other materials necessary for the implementation of the Project other than the Equipment provided by JICA under II-2 above.
7. In accordance with the laws and regulations in force in Myanmar, the Government of Myanmar will take necessary measures to meet:
    - (1) Expenses necessary for transportation within Myanmar of the Equipment referred to in II-2 above as well as for the installation, operation and maintenance thereof;
    - (2) Customs duties, internal taxes and any other charges, imposed in Myanmar on the Equipment referred to in II-2 above; and
    - (3) Running expenses necessary for the implementation of the Project.

#### IV. ADMINISTRATION OF THE PROJECT

1. Director General of the Forest Department (FD), as the Project Director, will bear overall responsibility for the administration and implementation of the Project.
2. Director of Planning and Statistics Division, FD, as the Project Manager, will be responsible for the managerial and technical matters of the Project.
3. Assistant Director of Planning and Statistics Division, FD, as the Project Coordinator will be responsible for the coordination of the Project.
4. Assistant Director of FD Myaung Mya District, as the Field Project Manager, will be responsible for the implementation of the Project at the field level.
5. The Japanese Team Leader will provide necessary recommendations and advice to the Project Director, the Project Manager, the Project Coordinator, and the

Field Project Manager on any matters pertaining to the implementation of the Project.

6. The Japanese experts will give necessary technical guidance and advice to the Myanmar counterpart personnel on technical matters pertaining to the implementation of the Project.
7. The Project will be executed in cooperation with Department of Fisheries and Myanma Agriculture Service to promote mangrove-friendly practices.
8. For the effective and successful implementation of technical cooperation for the Project, a Joint Coordinating Committee will be established whose functions and composition are described in Annex VI.

#### V. JOINT EVALUATION

Evaluation of the Project will be conducted jointly by JICA and the Myanmar authorities concerned, at the middle and during the last six months of the cooperation term in order to examine the level of achievement.

#### VI. CLAIMS AGAINST JAPANESE EXPERTS

The Government of Myanmar undertakes to bear claims, if any arises, against the Japanese experts engaged in technical cooperation for the Project resulting from, occurring in the course of, or otherwise connected with the discharge of their official functions in Myanmar except for those arising from the willful misconduct or gross negligence of the Japanese experts.

#### VII. MUTUAL CONSULTATION

There will be mutual consultation between JICA and the Government of Myanmar on any major issues arising from, or in connection with this Attached Document.

## VIII. MEASURES TO PROMOTE UNDERSTANDING OF AND SUPPORT FOR THE PROJECT

For the purpose of promoting support for the Project among the people of Myanmar, the Government of Myanmar will take appropriate measures to make the Project widely known to the people of Myanmar.

## IX. TERM OF COOPERATION

The duration of the technical cooperation for the Project under this Attached Document will be five (5) years from October 2006 (tentatively).

- ANNEX I      MASTER PLAN
- ANNEX II     LIST OF JAPANESE EXPERTS
- ANNEX III    LIST OF MACHINERY AND EQUIPMENT
- ANNEX IV    LIST OF MYANMAR COUNTERPART AND ADMINISTRATIVE PERSONNEL
- ANNEX V     LIST OF LAND, BUILDINGS AND FACILITIES
- ANNEX VI    JOINT COORDINATING COMMITTEE

## ANNEX I      MASTER PLAN

### 1. Project Title

Integrated Mangrove Rehabilitation and Management Project through Community Participation in the Ayeyawady Delta

### 2. Overall Goal

The mangrove forests are sustainably managed and poverty is alleviated among the communities in the Ayeyawady Delta.

### 3. Project Purpose

The communities and the mangrove forests co-exist in a sustainable manner in the selected areas where project activities are implemented within the Ayeyawady Delta.

### 4. Output of the Project

- (1) The selected communities practice environmentally and economically sustainable community forestry (CF).
- (2) The management and the support system of the Forest Department for CF is effective.
- (3) Some silvicultural techniques for the rehabilitation of the degraded and the management of the mangrove and its associated forests for the Ayeyawady Delta are established.
- (4) A coordination mechanism is established among key sectors to address the underlying causes of mangrove deforestation in the Ayeyawady Delta.

### 5. Activities

Output 1: The selected communities practice environmentally and economically sustainable CF.

- 1-1 Select villages to introduce CF from the ones that express interest.
- 1-2 Conduct baseline survey on the basic socio-economic conditions of the selected communities.
- 1-3 Mobilize the selected communities for user group formation and conduct introductory meetings on CF.
- 1-4 Introduce participatory planning processes for the user groups on CF to facilitate preparation of proposals for CF certificate and formulation of management plans.

- 1-5 Facilitate implementation of the management plans formulated by the user groups.
- 1-6 Organize meetings to assess various socio-economic needs of the selected communities and design programmes to strengthen their income generating capacities.
- 1-7 Implement various programmes to enhance the income levels of the user groups in the selected villages in partnership with cooperating agencies such as Department of Fisheries, Myanmar Agriculture Service, and other institutions.
- 1-8 Establish monitoring and evaluation systems for the management plans formulated by the user groups.
- 1-9 Conduct impact survey regarding the effects of CF on the livelihoods of the selected communities.

Output 2: The management and the support system of the Forest Department for CF is effective.

- 2-1 Review the contents of the Integrated Mangrove Management Plan (IMMP) among all CF Task Force members and break down necessary activities for the first phase by each reserved forest.
- 2-2 Confirm the various roles and responsibilities of the CF Task Force at each level to implement the IMMP.
- 2-3 Assess the needs of the CF Task Force members (e.g. financial, logistics and human resource development).
- 2-4 Develop training materials on standard operational procedures for CF for the mangrove forests.
- 2-5 Train field level staff on CF extension services and support.
- 2-6 Facilitate the Forest Department to carry out public information campaigns regarding CF and the conservation of mangrove forests.
- 2-7 Draft detailed standard operational procedures for CF for the mangrove forests.

Output 3: Some silvicultural techniques for the rehabilitation of the degraded and the management of the mangrove and its associated forests for the Ayeyawady Delta are established.

- 3-1 Conduct surveys for identification of silvicultural models for both community and non-community forestry with respect to the eco-geographical / management zones in the Ayeyawady Delta.
- 3-2 Prepare the specific action research test designs with respect to each silvicultural



model (e.g. seedling production, planting designs and methods, thinning, pruning, forest management).

- 3-3 Plan execution of the tests.
- 3-4 Prepare the facilities (e.g. nurseries).
- 3-5 Prepare plots and test materials (e.g. seeds, seedlings) and execute the test plots.
- 3-6 Conduct patrols and periodic technical monitoring /preliminary assessment.
- 3-7 Prepare draft technical guidelines of some action research items (e.g.. species identification, nursery, seed collection and management, planting techniques).

Output 4: A coordination mechanism is established among key sectors to address the underlying causes of mangrove deforestation in the Ayeyawady Delta.

- 4-1 Formulate an inter-disciplinary committee consisting of relevant authorities (e.g. agriculture, fisheries, settlement and land records) at the District level to examine the underlying causes for mangrove deforestation in the Ayeyawady Delta.
- 4-2 Update the most recent land use information on periodic basis, including overall forest resource assessment of the region and mangrove forest conversion.
- 4-3 Conduct coordination among the committee members upon demand to coordinate instructions for the implementation of appropriate land use policies.
- 4-4 Organize seminars to promote synergies among the relevant sectors for the sustainable management of the mangrove ecosystem in the Ayeyawady Delta.

## ANNEX II LIST OF JAPANESE EXPERTS

The Project experts, who will be in charge of the following fields, will be dispatched:

1. Chief Advisor
2. Participatory community development
3. Mangrove forestry
4. Coordinator
5. Other experts in specific fields (e.g. Extension, GIS, Agro-forestry, Fish culture, Forestry value-added production, marketing and distribution) would be dispatched if necessary upon mutual agreement.

### ANNEX III LIST OF MACHINERY AND EQUIPMENT

Part of machinery and equipment necessary for the effective implementation of the Project will be provided by the Japanese side within the budget allocated for technical cooperation.

1. Boat(s)
2. Vehicle(s)
3. Other equipment would be provided if necessary upon mutual agreement.  
e.g. (Not exhaustive)
  - Public awareness related equipment
  - Public information supporting equipment and materials
  - Nursery operation materials
  - Demonstration CF activities supporting materials
  - Training materials
  - Satellite Imagery
  - Planting materials
  - GPS
  - Salinity readers
  - Office equipment
  - Seeds (exotic species)

ANNEX IV LIST OF MYANMAR COUNTERPART AND ADMINISTRATIVE PERSONNEL

1. Counterpart personnel

- (1) Project Director is to be Director General, Forestry Department (FD).
- (2) Project Manager is to be Director of Planning and Statistics Division, FD.
- (3) Project Coordinator is to be Assistant Director of Planning and Statistics Division, FD.
- (4) Field Project Manager is to be Assistant Director of FD Myaug Mya District.
- (5) CF Task Force members
- (6) Other personnel mutually agreed upon as necessary

2. Administrative personnel

- (1) Clerks
- (2) Drivers (boat and vehicle)
- (3) Other supporting staff necessary for the Project implementation

## ANNEX V LIST OF LAND, BUILDINGS AND FACILITIES

The following will be prepared by the Government of Myanmar for the implementation of the Project;

1. Office building and facilities necessary for the implementation of the Project
2. Office space and necessary facilities for the Japanese experts and related staff members
3. Land for the action research
4. Jetty and space necessary for storage of boats and vehicles
5. Other facilities mutually agreed upon as necessary

## ANNEX VI JOINT COORDINATING COMMITTEE

### 1. Function

The Joint Coordinating Committee (JCC) will meet at least once a year or whenever necessity arises. The main functions of JCC are:

- (1) To approve the Annual Plan of Operation formulated by the Project in accordance with the Record of Discussions
- (2) To review the overall progress of the Project and activities carried out under the above-mentioned Annual Plan of Operation in particular
- (3) To review and exchange views on major issues arising from or concerning the Project
- (4) To facilitate coordination with other relevant authorities.

### 2. Composition

#### (1) Chairperson:

Director General of the Forest Department (FD)

#### (2) Vice chairperson:

Director of Planning and Statistics Division, FD

#### (3) Myanmar side:

Representative of Department of Planning and Statistics, Ministry of Forestry

Director of Administration Division, FD

Director of Finance Division, FD

Director of Training and Research Division, FD

Director of FD Ayeyawady Division

Representative of Forest Research Institute

Representative of Department of Fisheries, Ministry of Livestock and Fisheries

Representative of Myanma Agriculture Service, Ministry of Agriculture and Irrigation

Representative of Department of Settlements and Land Records, Ministry of Agriculture and Irrigation

Assistant Director of Planning and Statistics Division, FD

Assistant Director of FD Myaung Mya District

#### (4) Japanese side:

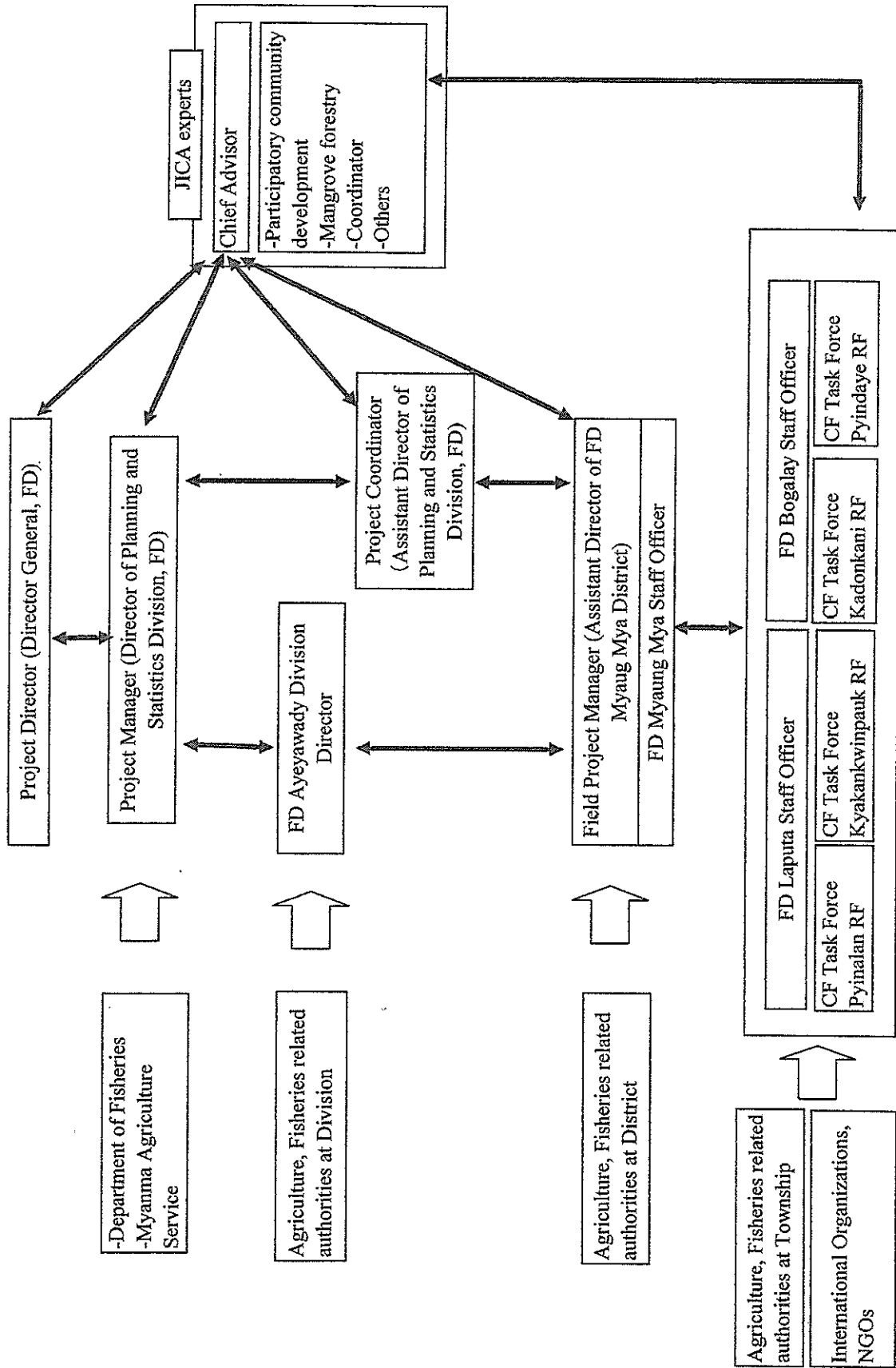
Representative JICA Myanmar Office

JICA experts

Personnel to be dispatched by JICA, if necessary

Note: Official(s) of the Embassy of Japan may attend the JCC as an observer(s).  
Chairperson can request and admit attendance of other relevant personnel.

Project management structure



List of stakeholders consulted by the Team

**Forest Department, Ministry of Forestry**

*<Head Office>*

U Soe Win Hlaing, Director General

U Aye Myint Maung, Deputy Director General

U Sann Lwin, Pro-Rector and Director of Planning and Statistics Division

U Saw Eh Dah, Director, Training and Research Development Division

U Let Yar Aung, Director, Extension Division

U Zaw Weik, Director, Natural Forest and Plantation Division

Daw Yi Yi Tint, Director, Finance Division

U Myint Swe, Deputy Director, Planning and Statistics Division

U Bo Ni, Assistant Director, Planning and Statistics Division

Dr. Nyi Nyi Kyaw, Assistant Director, Forest Research Institute

U Toe Toe Aung, Range Officer, Planning and Statistics Division

*<Ayeyawady Division>*

U Win Myint, Director

U Hla Maung Thein, Assistant Director

U Aung Min, Assistant Director

U Win Maung, Assistant Director, FD Myaung Mya

U Win Naing, Range Officer, FD Laputta

U Aung Myat San, Range Officer, FD Laputta

U Soe Lwin, Range Officer, Nature and Wildlife Conservation Division

Community Forestry Task Force Members in Laputta and Bogalay Townships

**Department of Fisheries, Ministry of Livestock and Fisheries**

*<Head Office>*

U Than Tun, Director General

U Hla Win, Advisor, Deputy Director General, (Retd.)

U Minn Thame, Deputy Director (Retd.)

U Khin Ko Lay, Director, Research and Development

U San Tin, Director, Planning

*<Ayeyawady Division>*

U Min Naung, Deputy Division Officer



**Myanma Agriculture Service (MAS)**

*<Head Office>*

U Hla Myo, General Manager, Extension Division

U Than Aye, General Manager, Project Planning Management and Evaluation Division

U San Nyunt, Deputy General Manager, Extension Division

U Tin Win, Deputy General Manager, Planning Division

*<Ayeyawady Division>*

U Maung Maung Aye, Manager

Daw Than Myaing, Assistant Manager, Plant Protection

U Hla Than, Assistant Manager

**United Nations Development Programme (UNDP)**

Ms. Akiko Suzuki, Deputy Resident Representative, Programme

U David Dallah, Assistant Resident Representative

**Forest Resource Environment Development and Conservation Association  
(FREDA)**

U Sein Maung Wint, Chairman

U Ohn, General Secretary

**Mangrove Service Network (MSN)**

U Win Sein Naing, Small Scale Fisheries

U Mying Aye, Mangrove Technician

U Aung Swe Myint, Community Forestry Extension and Social Mobilization

**Technical Development Group (TDG)**

U Win Thein, Senior Researcher

Daw Khin Khin Nyunt, Researcher

U Than Myint, Development Economist

**Community members from the following villages:**

Thar Ya Kone

Nyaung Ta Pin

Kwa Kwa Lay

Aung Hlaing

Ngat Kyi Daung



**RECORD OF DISCUSSIONS  
BETWEEN  
JAPAN INTERNATIONAL COOPERATION AGENCY  
AND  
AUTHORITIES CONCERNED OF THE GOVERNMENT OF  
THE UNION OF MYANMAR  
ON  
THE INTEGRATED MANGROVE REHABILITATION AND MANAGEMENT  
PROJECT THROUGH COMMUNITY PARTICIPATION IN  
THE AYEYAWADY DELTA**

With regard to the Minutes of Meetings between the Preparatory Study Team (hereinafter referred to as the “Team”) and the Government of the Union of Myanmar (hereinafter referred to as the “Myanmar”) dated on 22 December 2005, Japan International Cooperation Agency (hereinafter referred to as “JICA”) had series of discussions through the Resident Representative of JICA Myanmar Office, with Myanmar authorities concerned with respect to desirable measures to be taken by JICA and the Government of Myanmar for the successful implementation of the Integrated Mangrove Rehabilitation and Management Project through Community Participation in the Ayeyawady Delta.

As a result of the discussions, JICA and the relevant Myanmar authorities concerned agreed to recommend to their respective Governments the matters referred to in the document attached hereto.

Yangon,                      , 2006

---

U Soe Win Hlaing  
Director General, Forest Department,  
Ministry of Forestry  
The Union of Myanmar

---

Ms. Michiko Umezaki  
Resident Representative,  
Myanmar Office  
Japan International Cooperation Agency

Cooperating agencies:

---

U Than Tun  
Director General,  
Department of Fisheries  
Ministry of Livestock and Fisheries  
The Union of Myanmar

---

U Ohn Than  
Managing Director,  
Myanma Agriculture Service  
Ministry of Agriculture and Irrigation  
The Union of Myanmar



## THE ATTACHED DOCUMENT

### I. COOPERATION BETWEEN JICA AND THE GOVERNMENT OF MYANMAR

1. The Government of Myanmar will implement the Integrated Mangrove Rehabilitation and Management Project through Community Participation in the Ayeyawady Delta (hereinafter referred to as "the Project") in cooperation with JICA.
2. The Project will be implemented in accordance with the Master Plan which is given in Annex I.

### II. MEASURES TO BE TAKEN BY JICA

In accordance with the laws and regulations in force in Japan, JICA will take, at its own expense, the following measures according to the normal procedures under the Colombo Plan Technical Cooperation Scheme.

#### 1. DISPATCH OF JAPANESE EXPERTS

JICA will provide the services of the Japanese experts as listed in Annex II.

#### 2. PROVISION OF MACHINERY AND EQUIPMENT

JICA will provide such machinery, equipment and other materials (hereinafter referred to as "the Equipment") necessary for the implementation of the Project as listed in Annex III. The Equipment will become the property of the Government of Myanmar upon being delivered C.I.F. (cost, insurance and freight) to the Myanmar authorities concerned at the ports and/or airports of disembarkation.

#### 3. TRAINING OF MYANMAR PERSONNEL IN JAPAN

JICA will receive the Myanmar personnel connected with the Project for technical training in Japan.

### III. MEASURES TO BE TAKEN BY THE GOVERNMENT OF MYANMAR

1. The Government of Myanmar will take necessary measures to ensure that the self-reliant operation of the Project will be sustained during and after the period of Japanese technical cooperation, through the full and active involvement in the Project by all related authorities, beneficiary groups and institutions.
2. The Government of Myanmar will ensure that the technologies and knowledge acquired by the Myanmar nationals as a result of Japanese technical cooperation will contribute to the economic and social development of Myanmar.
3. The Government of Myanmar will grant in Myanmar privileges, exemptions and benefits to the Japanese experts referred to in II-1 above and their families, which are no less favorable than those accorded to experts of third countries working in Myanmar under the Colombo Plan Technical Cooperation Scheme.
4. The Government of Myanmar will ensure that the Equipment referred to in II-2 above will be utilized effectively for the implementation of the Project in consultation with the Japanese experts referred to in Annex II.
5. The Government of Myanmar will take necessary measures to ensure that the knowledge and experience acquired by the Myanmar personnel from technical training in Japan will be utilized effectively in the implementation of the Project.
6. In accordance with the laws and regulations in force in Myanmar, the Government of Myanmar will take necessary measures to provide at its own expense:
  - (1) Services of the Myanmar counterpart personnel and administrative personnel as listed in Annex IV;
  - (2) Land, buildings and facilities as listed in Annex V; and

- (3) Supply or replacement of machinery, equipment, instruments, vehicles, tools, spare parts and any other materials necessary for the implementation of the Project other than the Equipment provided by JICA under II-2 above.
7. In accordance with the laws and regulations in force in Myanmar, the Government of Myanmar will take necessary measures to meet:
  - (1) Expenses necessary for transportation within Myanmar of the Equipment referred to in II-2 above as well as for the installation, operation and maintenance thereof;
  - (2) Customs duties, internal taxes and any other charges, imposed in Myanmar on the Equipment referred to in II-2 above; and
  - (3) Running expenses necessary for the implementation of the Project.

#### IV. ADMINISTRATION OF THE PROJECT

1. Director General of the Forest Department (FD), as the Project Director, will bear overall responsibility for the administration and implementation of the Project.
2. Director of Planning and Statistics Division, FD, as the Project Manager, will be responsible for the managerial and technical matters of the Project.
3. Assistant Director of Planning and Statistics Division, FD, as the Project Coordinator will be responsible for the coordination of the Project.
4. Assistant Director of FD Myaung Mya District, as the Field Project Manager, will be responsible for the implementation of the Project at the field level.
5. The Japanese Team Leader will provide necessary recommendations and advice to the Project Director, the Project Manager, the Project Coordinator, and the

Field Project Manager on any matters pertaining to the implementation of the Project.

6. The Japanese experts will give necessary technical guidance and advice to the Myanmar counterpart personnel on technical matters pertaining to the implementation of the Project.
7. The Project will be executed in cooperation with Department of Fisheries and Myanmar Agriculture Service to promote mangrove-friendly practices.
8. For the effective and successful implementation of technical cooperation for the Project, a Joint Coordinating Committee will be established whose functions and composition are described in Annex VI.

#### V. JOINT EVALUATION

Evaluation of the Project will be conducted jointly by JICA and the Myanmar authorities concerned, at the middle and during the last six months of the cooperation term in order to examine the level of achievement.

#### VI. CLAIMS AGAINST JAPANESE EXPERTS

The Government of Myanmar undertakes to bear claims, if any arises, against the Japanese experts engaged in technical cooperation for the Project resulting from, occurring in the course of, or otherwise connected with the discharge of their official functions in Myanmar except for those arising from the willful misconduct or gross negligence of the Japanese experts.

#### VII. MUTUAL CONSULTATION

There will be mutual consultation between JICA and the Government of Myanmar on any major issues arising from, or in connection with this Attached Document.



## VIII. MEASURES TO PROMOTE UNDERSTANDING OF AND SUPPORT FOR THE PROJECT

For the purpose of promoting support for the Project among the people of Myanmar, the Government of Myanmar will take appropriate measures to make the Project widely known to the people of Myanmar.

## IX. TERM OF COOPERATION

The duration of the technical cooperation for the Project under this Attached Document will be five (5) years from October 2006 (tentatively).

ANNEX I	MASTER PLAN
ANNEX II	LIST OF JAPANESE EXPERTS
ANNEX III	LIST OF MACHINERY AND EQUIPMENT
ANNEX IV	LIST OF MYANMAR COUNTERPART AND ADMINISTRATIVE PERSONNEL
ANNEX V	LIST OF LAND, BUILDINGS AND FACILITIES
ANNEX VI	JOINT COORDINATING COMMITTEE



## ANNEX I      MASTER PLAN

### 1. Project Title

Integrated Mangrove Rehabilitation and Management Project through Community Participation in the Ayeyawady Delta

### 2. Overall Goal

The mangrove forests are sustainably managed and poverty is alleviated among the communities in the Ayeyawady Delta.

### 3. Project Purpose

The communities and the mangrove forests co-exist in a sustainable manner in the selected areas where project activities are implemented within the Ayeyawady Delta.

### 4. Output of the Project

- (1) The selected communities practice environmentally and economically sustainable community forestry (CF).
- (2) The management and the support system of the Forest Department for CF is effective.
- (3) Some silvicultural techniques for the rehabilitation of the degraded and the management of the mangrove and its associated forests for the Ayeyawady Delta are established.
- (4) A coordination mechanism is established among key sectors to address the underlying causes of mangrove deforestation in the Ayeyawady Delta.

### 5. Activities

Output 1: The selected communities practice environmentally and economically sustainable CF.

- 1-1 Select villages to introduce CF from the ones that express interest.
- 1-2 Conduct baseline survey on the basic socio-economic conditions of the selected communities.
- 1-3 Mobilize the selected communities for user group formation and conduct introductory meetings on CF.
- 1-4 Introduce participatory planning processes for the user groups on CF to facilitate preparation of proposals for CF certificate and formulation of management plans.

- 1-5 Facilitate implementation of the management plans formulated by the user groups.
- 1-6 Organize meetings to assess various socio-economic needs of the selected communities and design programmes to strengthen their income generating capacities.
- 1-7 Implement various programmes to enhance the income levels of the user groups in the selected villages in partnership with cooperating agencies such as Department of Fisheries, Myanmar Agriculture Service, and other institutions.
- 1-8 Establish monitoring and evaluation systems for the management plans formulated by the user groups.
- 1-9 Conduct impact survey regarding the effects of CF on the livelihoods of the selected communities.

Output 2: The management and the support system of the Forest Department for CF is effective.

- 2-1 Review the contents of the Integrated Mangrove Management Plan (IMMP) among all CF Task Force members and break down necessary activities for the first phase by each reserved forest.
- 2-2 Confirm the various roles and responsibilities of the CF Task Force at each level to implement the IMMP.
- 2-3 Assess the needs of the CF Task Force members (e.g. financial, logistics and human resource development).
- 2-4 Develop training materials on standard operational procedures for CF for the mangrove forests.
- 2-5 Train field level staff on CF extension services and support.
- 2-6 Facilitate the Forest Department to carry out public information campaigns regarding CF and the conservation of mangrove forests.
- 2-7 Draft detailed standard operational procedures for CF for the mangrove forests.

Output 3: Some silvicultural techniques for the rehabilitation of the degraded and the management of the mangrove and its associated forests for the Ayeyawady Delta are established.

- 3-1 Conduct surveys for identification of silvicultural models for both community and non-community forestry with respect to the eco-geographical / management zones in the Ayeyawady Delta.
- 3-2 Prepare the specific action research test designs with respect to each silvicultural

model (e.g. seedling production, planting designs and methods, thinning, pruning, forest management).

- 3-3 Plan execution of the tests.
- 3-4 Prepare the facilities (e.g. nurseries).
- 3-5 Prepare plots and test materials (e.g. seeds, seedlings) and execute the test plots.
- 3-6 Conduct patrols and periodic technical monitoring /preliminary assessment.
- 3-7 Prepare draft technical guidelines of some action research items (e.g.. species identification, nursery, seed collection and management, planting techniques).

Output 4: A coordination mechanism is established among key sectors to address the underlying causes of mangrove deforestation in the Ayeyawady Delta.

- 4-1 Formulate an inter-disciplinary committee consisting of relevant authorities (e.g. agriculture, fisheries, settlement and land records) at the District level to examine the underlying causes for mangrove deforestation in the Ayeyawady Delta.
- 4-2 Update the most recent land use information on periodic basis, including overall forest resource assessment of the region and mangrove forest conversion.
- 4-3 Conduct coordination among the committee members upon demand to coordinate instructions for the implementation of appropriate land use policies.
- 4-4 Organize seminars to promote synergies among the relevant sectors for the sustainable management of the mangrove ecosystem in the Ayeyawady Delta.

## ANNEX II LIST OF JAPANESE EXPERTS

The Project experts, who will be in charge of the following fields, will be dispatched:

1. Chief Advisor
2. Participatory community development
3. Mangrove forestry
4. Coordinator
5. Other experts in specific fields (e.g. Extension, GIS, Agro-forestry, Fish culture, Forestry value-added production, marketing and distribution) would be dispatched if necessary upon mutual agreement.

## ANNEX III LIST OF MACHINERY AND EQUIPMENT

Part of machinery and equipment necessary for the effective implementation of the Project will be provided by the Japanese side within the budget allocated for technical cooperation.

1. Boat(s)
2. Vehicle(s)
3. Other equipment would be provided if necessary upon mutual agreement.  
e.g. (Not exhaustive)
  - Public awareness related equipment
  - Public information supporting equipment and materials
  - Nursery operation materials
  - Demonstration CF activities supporting materials
  - Training materials
  - Satellite Imagery
  - Planting materials
  - GPS
  - Salinity readers
  - Office equipment
  - Seeds (exotic species)

ANNEX IV LIST OF MYANMAR COUNTERPART AND ADMINISTRATIVE PERSONNEL

1. Counterpart personnel

- (1) Project Director is to be Director General, Forestry Department (FD).
- (2) Project Manager is to be Director of Planning and Statistics Division, FD.
- (3) Project Coordinator is to be Assistant Director of Planning and Statistics Division, FD.
- (4) Field Project Manager is to be Assistant Director of FD Myaug Mya District.
- (5) CF Task Force members
- (6) Other personnel mutually agreed upon as necessary

2. Administrative personnel

- (1) Clerks
- (2) Drivers (boat and vehicle)
- (3) Other supporting staff necessary for the Project implementation



## ANNEX V LIST OF LAND, BUILDINGS AND FACILITIES

The following will be prepared by the Government of Myanmar for the implementation of the Project;

1. Office building and facilities necessary for the implementation of the Project
2. Office space and necessary facilities for the Japanese experts and related staff members
3. Land for the action research
4. Jetty and space necessary for storage of boats and vehicles
5. Other facilities mutually agreed upon as necessary

## ANNEX VI JOINT COORDINATING COMMITTEE

### 1. Function

The Joint Coordinating Committee (JCC) will meet at least once a year or whenever necessity arises. The main functions of JCC are:

- (1) To approve the Annual Plan of Operation formulated by the Project in accordance with the Record of Discussions
- (2) To review the overall progress of the Project and activities carried out under the above-mentioned Annual Plan of Operation in particular
- (3) To review and exchange views on major issues arising from or concerning the Project
- (4) To facilitate coordination with other relevant authorities.

### 2. Composition

#### (1) Chairperson:

Director General of the Forest Department (FD)

#### (2) Vice chairperson:

Director of Planning and Statistics Division, FD

#### (3) Myanmar side:

Representative of Department of Planning and Statistics, Ministry of Forestry

Director of Administration Division, FD

Director of Finance Division, FD

Director of Training and Research Division, FD

Director of FD Ayeyawady Division

Representative of Forest Research Institute

Representative of Department of Fisheries, Ministry of Livestock and Fisheries

Representative of Myanma Agriculture Service, Ministry of Agriculture and Irrigation

Representative of Department of Settlements and Land Records, Ministry of Agriculture and Irrigation

Assistant Director of Planning and Statistics Division, FD

Assistant Director of FD Myaung Mya District

#### (4) Japanese side:

Representative JICA Myanmar Office

JICA experts

Personnel to be dispatched by JICA, if necessary

Note: Official(s) of the Embassy of Japan may attend the JCC as an observer(s). Chairperson can request and admit attendance of other relevant personnel.