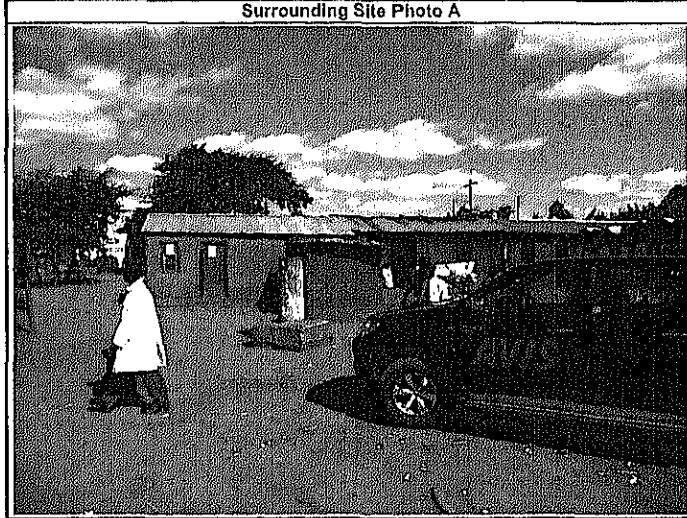


# Descriptions for Ground Control Point

LCA/ DOS/ JICA

Point No.	79/ MWT	Point Name	KALUMBA		Operated by	S. Nishio
Photo Signal Type	Pricking	Date of Observation	7-Apr-2009		Inspected by	A. Nishimura
Coordinate Zone: UTM 36		Horizontal Coordinates (m)			Ortho Height (m)	
		Easting (E)	Northing (N)		Pillar Point	Ground Height
WGS-84		586,526 Handy GPS	8,445,476 Handy GPS		-----	-1.60
Clarke 1880 (Modified)		586,505.457	8,445,795.969		1,143.400	1,141.800



Position on QB Images



Notes:



## Descriptions for Ground Control Point

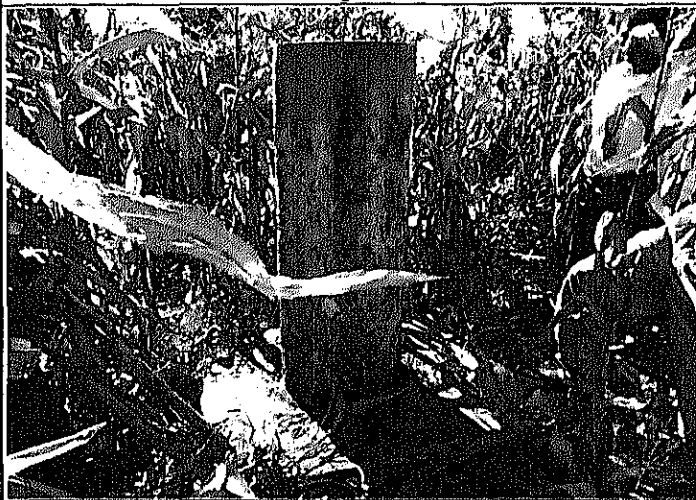
LCA/ DOS/ JICA

Point No.	201/ MWT	Point Name	TAMBALALE		Operated by	S. Nishio
Photo Signal Type	Pricking	Date of Observation	7-Apr-2009		Inspected by	A. Nishimura
Coordinate Zone: UTM 36		Horizontal Coordinates (m)			Ortho Height (m)	
		Easting (E)	Northing (N)		Pillar Point	Ground Height
WGS-84		590,736 Handy GPS	8,453,092 Handy GPS		-----	-1.40
Clarke 1880 (Modified)		590,712.910	8,453,412.334		1,133.000	1,131.600

Surrounding Site Photo A



Surrounding Site Photo B



Position on QB Images



Notes:





# Descriptions for Ground Control Point

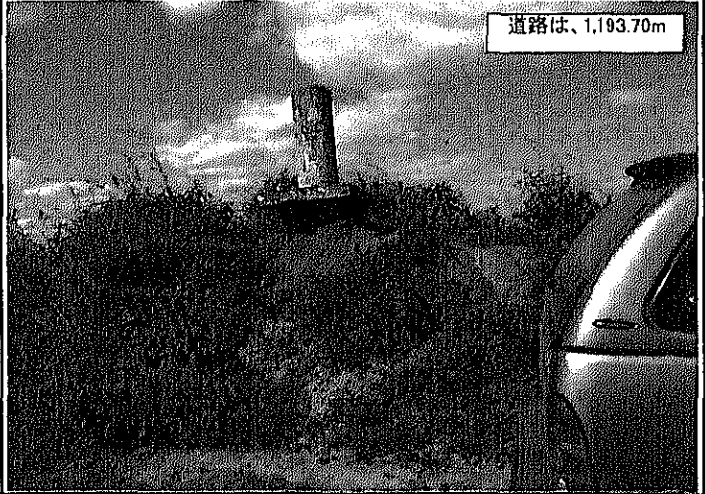
LCA/ DOS/ JICA

Point No.	141/ MWT	Point Name	CHITUKULA		Operated by	A. Nishimura
Photo Signal Type	Pricking	Date of Observation	7-Apr-2009		Inspected by	S. Nishio
Coordinate Zone: UTM 36		Horizontal Coordinates (m)			Ortho Height (m)	
		Easting (E)	Northing (N)		Pillar Point	Ground Height
WGS-84		581,404 Handy GPS	8,470,220 Handy GPS		-----	-1.60
Clarke 1880 (Modified)		581,380.069	8,470,343.071		1,196.900	1,195.300

Surrounding Site Photo A



Surrounding Site Photo B



Position on QB Images



Notes:



# Descriptions for Ground Control Point

LCA/ DOS/ JICA

Point No.	146/ MWT	Point Name	KAMLEMBO	Operated by	S. Nishio
Photo Signal Type	Pricking	Date of Observation	8-Apr-2009	Inspected by	A. Nishimura
Coordinate Zone: UTM 36	Horizontal Coordinates (m)			Ortho Height (m)	
	Easting (E)	Northing (N)	Pillar Point	Ground Height	
WGS-84	582,801 Handy GPS	8,475,463 Handy GPS	-----	-1.70	
Clarke 1880 (Modified)	582,774.405	8,475,782.808	1,227.100	1,225.400	



Position on QB Images



Notes:

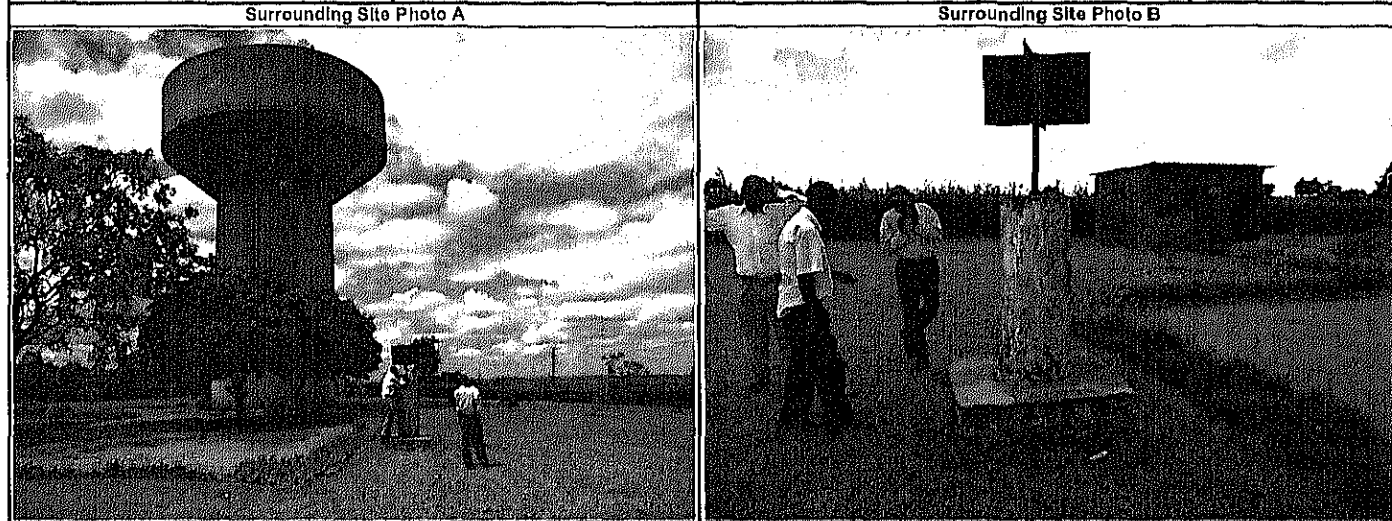




# Descriptions for Ground Control Point

LCA/ DOS/ JICA

Point No.	434/ MWT	Point Name	KALIMA		Operated by	S .Nishio
Photo Signal Type	Pricking	Date of Observation	8-Apr-2009		Inspected by	A. Nishimura
Coordinate Zone: UTM 36		Horizontal Coordinates (m)			Ortho Height (m)	
		Easting (E)	Northing (N)	Pillar Point	Ground Height	
WGS-84		587,360 Handy GPS	8,478,838 Handy GPS		-----	-1.45
Clarke 1880 (Modified)		587,339.864	8,479,160.783		1,247.200	1,245.750



Position on QB Images



Notes:



# Descriptions for Ground Control Point

LCA/DOS/JICA

Point No.	432/ MWT	Point Name	THAMBWE		Operated by	S. Nishio
Photo Signal Type	Pricking	Date of Observation	8-Apr-2009		Inspected by	A. Nishimura
Coordinate Zone: UTM 36	Horizontal Coordinates (m)				Ortho Height (m)	
	Easting (E)		Northing (N)		Pillar Point	Ground Height
WGS-84	587,316	Handy GPS	8,483,268	Handy GPS	-----	-1.40
Clarke 1880 (Modified)	587,289.217		8,483,590.973		1,292.700	1,291.300

Surrounding Site Photo A



Surrounding Site Photo B



Position on QB Images



Notes:



# Descriptions for Ground Control Point

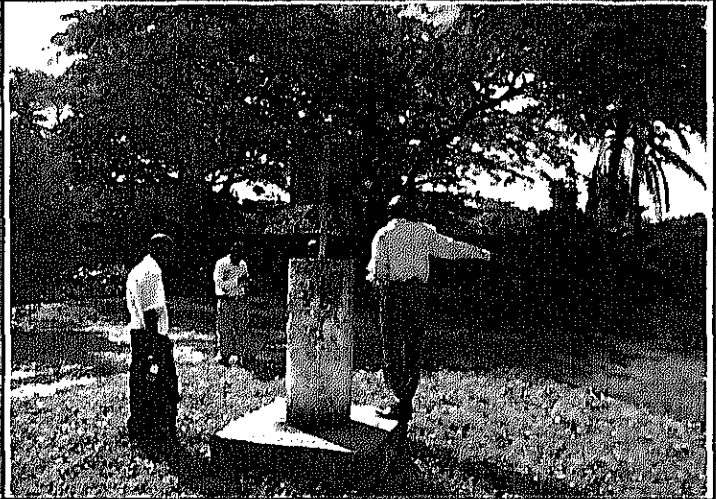
LCA/DOS/JICA

Point No.	88/ MWT	Point Name	AERO 2		Operated by	S. Nishio
Photo Signal Type	Pricking	Date of Observation	8-Apr-2009		Inspected by	A. Nishimura
Coordinate Zone: UTM 36		Horizontal Coordinates (m)			Ortho Height (m)	
		Easting (E)	Northing (N)	Pillar Point	Ground Height	
WGS-84		581,846 Handy GPS	8,454,006 Handy GPS		-----	-1.50
Clarke 1880 (Modified)		581,829.097	8,454,326.523		1,106.600	1,105.100

Surrounding Site Photo A



Surrounding Site Photo B



Position on QB Images



Notes:





# Descriptions for Ground Control Point

LCA/ DOS/ JICA

Point No.	89/ MWT	Point Name	TANK SOUTH		Operated by	S. Nishio
Photo Signal Type	Pricking	Date of Observation	8-Apr-2009		Inspected by	A. Nishimura
Coordinate Zone: UTM 36	Horizontal Coordinates (m)			Ortho Height (m)		
	Easting (E)		Northing (N)		Pillar Point	Ground Height
WGS-84	584,917	Handy GPS	8,451,102	Handy GPS	-----	-0.75
Clarke 1880 (Modified)	584,894.036		8,451,422.514		1,107.300	1,106.550

Surrounding Site Photo A



Surrounding Site Photo B



Position on QB Images



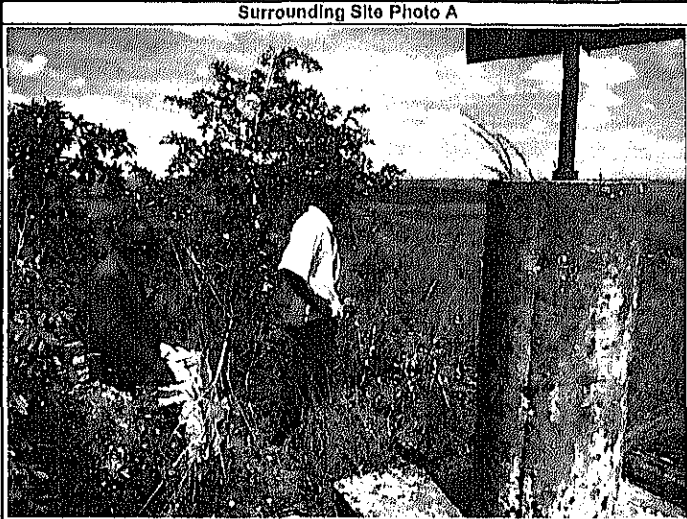
Notes:



# Descriptions for Ground Control Point

LCA/ DOS/ JICA

Point No.	200/ MWT	Point Name	NGULI		Operated by	S. Nishio
Photo Signal Type	Prickling	Date of Observation	9-Apr-2009		Inspected by	A. Nishimura
Coordinate Zone: UTM 36		Horizontal Coordinates (m)			Ortho Height (m)	
		Easting (E)	Northing (N)	Pillar Point	Ground Height	
WGS-84		595,237 Handy GPS	8,456,574 Handy GPS	-----	-1.60	
Clarke 1880 (Modified)		595,215.773	8,456,893.419	1,113.800	1,112.200	



Position on QB Images



Notes:

