


JAPAN INTERNATIONAL COOPERATION AGENCY (JICA)  
MINISTRY OF LABOR, THE GOVERNMENT OF MOZAMBIQUE

THE STUDY  
ON  
DEVELOPMENT OF THE RESETTLEMENT AREA  
FOR  
DEMOBILIZED SOLDIERS AND  
MINE LABORERS FROM SOUTH AFRICA  
IN THE REPUBLIC OF MOZAMBIQUE

FINAL REPORT

JICA LIBRARY  
  
1194540 [9]

NOVEMBER 2002

INTERNATIONAL DEVELOPMENT CENTER OF JAPAN  
SANYU CONSULTANTS INC.

|       |
|-------|
| AFA   |
| JR    |
| 02-76 |

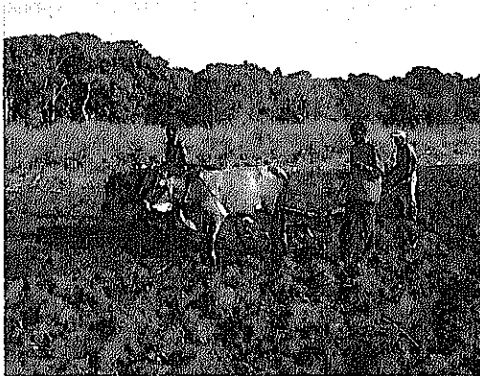




**JAPAN INTERNATIONAL COOPERATION AGENCY (JICA)  
MINISTRY OF LABOR, THE GOVERNMENT OF MOZAMBIQUE**

**THE STUDY  
ON  
DEVELOPMENT OF THE RESETTLEMENT AREA  
FOR  
DEMOBILIZED SOLDIERS AND  
MINE LABORERS FROM SOUTH AFRICA  
IN THE REPUBLIC OF MOZAMBIQUE**

**FINAL REPORT**



**NOVEMBER 2002**

**INTERNATIONAL DEVELOPMENT CENTER OF JAPAN  
SANYU CONSULTANTS INC.**



1194540 [9]

## PREFACE

In response to the request from the Government of the Republic of Mozambique, the Government of Japan decided to conduct a Master Plan study on Development of the Resettlement Area for Demobilized Soldiers and Mine Laborers from South Africa and entrusted the study to the Japan International Cooperation Agency (JICA).

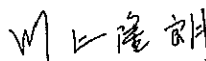
JICA sent to Mozambique a study team headed by Mr. Kiyofumi Tanaka, International Development Center of Japan, four times between August 2000 and October 2002.

The team held discussion with the officials concerned of the Government of the Republic of Mozambique, and conducted field surveys at the study area. After the team returned to Japan, further studies were made and the present report was prepared.

I hope that this report will contribute to the promotion of the project and to the enhancement of friendly relation between our two countries.

I wish to express my sincere appreciation to the officials concerned of the Government of the Republic of Mozambique for their close cooperation extended to the Team.

November 2002



---

Takao Kawakami  
President  
Japan International Cooperation Agency



November 2002

Mr. Takao Kawakami  
President  
Japan International Cooperation Agency  
Tokyo, Japan

Dear Mr. Kawakami;

### **Letter of Transmittal**

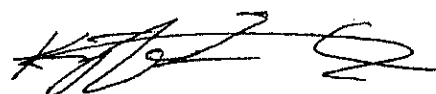
We are pleased to submit to you the final report for the Study on Development of the Resettlement Area for Demobilized Soldiers and Mine Laborers from South Africa in the Republic of Mozambique. This report summarizes the results of the study carried out by a consortium of the International Development Center of Japan and Sanyu Consultants, Inc.

The report is divided into three parts: 1) situation analysis of the study area; 2) description of nine pilot action plans, which were implemented from May 2001 to February 2002; and 3) a village development master plan for the study area and a model approach for self-reliant village development in Mozambique, both of which were formulated from our experiences of planning and implementing the pilot action plans in the study area.

We wish to take this opportunity to express our sincere gratitude to your Agency, Ministry of Foreign Affairs and Ministry of Agriculture, Forestry and Fisheries of the Government of Japan. We also wish to express our deep gratitude to the Department of Job Promotion (GPE) in the Ministry of Labor and other authorities concerned for their close cooperation and assistance extended to us during our study. Our appreciation also extends to the local villagers in the Study Area who actively participated in our pilot action plans.

We hope that this report will contribute to sustainable rural and agricultural development in Mozambique, and to further cooperation between Mozambique and Japan.

Very truly yours,



---

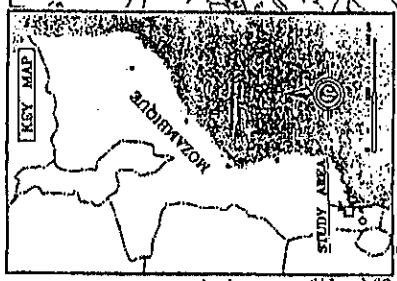
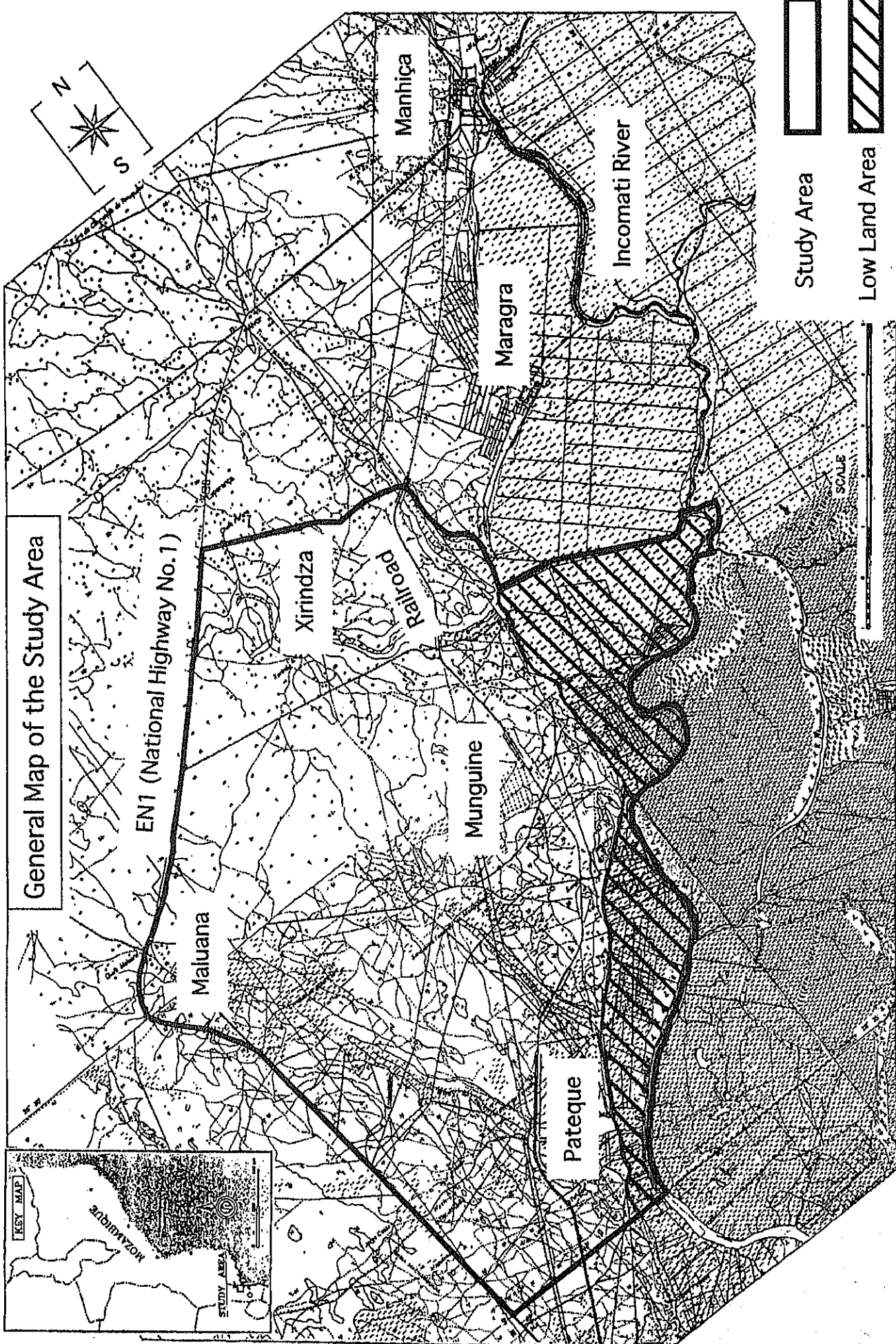
Kiyofumi Tanaka

Team Leader

The Study on Development of the Resettlement Area  
for Demobilized Soldiers and Mine Laborers from South Africa  
in the Republic of Mozambique







General Map of the Study Area

Study Area  
 Low Land Area

SCALE  
 1:50,000



# Table of Contents

## General Map of the Study Area

|   |             |
|---|-------------|
| <b>List of Tables and Figures</b>   | <b>xi</b>   |
| <b>List of Abbreviations</b>  | <b>xvii</b> |
| <b>Photo Album</b>  | <b>P-1</b>  |
| <b>Executive Summary</b>  | <b>S-1</b>  |
| <b>1. Introduction</b>  | <b>1-1</b>  |
| 1.1 Background of the Study   | 1-1         |
| 1.2 Objectives of the Study   | 1-2         |
| 1.3 Study Area  | 1-2         |
| 1.4 Basic Approaches of the Study   | 1-2         |
| 1.5 Study Team Members  | 1-4         |
| 1.6 Counterparts  | 1-8         |
| 1.7 Steering Committee Members  | 1-9         |
| 1.8 Work Flowchart and Schedule   | 1-10        |
| <b>Part I: Situation Analysis of the Study Area</b>                           |             |
| <b>2. Local Administration</b>  | <b>2-1</b>  |
| 2.1 Overview of Local Administration System in Mozambique                     | 2-1         |
| 2.2 Current Situation of the Administrative Post of Maluana, Manhiça District | 2-1         |
| 2.3 Decentralization in Mozambique and Donors' Assistance                     | 2-3         |
| 2.4 National System for Training in Public Administration (SIFAP)             | 2-10        |
| 2.5 Decentralization and Financing  | 2-11        |
| <b>3. Village Organizations, NGOs, Land Tenure</b>                            | <b>3-1</b>  |
| 3.1 Village Organizations: Associations and Co-operatives                     | 3-1         |
| 3.2 Non-Governmental Organizations (NGOs) Working in the Study Area           | 3-6         |
| 3.3 Land Tenure   | 3-7         |

|  |            |
|--|------------|
| <b>4. Women</b>                                      | <b>4-1</b> |
| 4.1 Introduction                                     | 4-1        |
| 4.2 Current Situation of Women in the Study Area     | 4-1        |
| 4.3 Planning for the Future                          | 4-8        |
| <br>   |            |
| <b>5. Rural Water Supply</b>                         | <b>5-1</b> |
| 5.1 Current Water Supply Situation in the Study Area | 5-1        |
| 5.2 Analysis of Potentials and Constraints           | 5-10       |
| 5.3 Planning for the Future (Recommendations)        | 5-12       |
| <br>   |            |
| <b>6. Agricultural Production and Marketing</b>      | <b>6-1</b> |
| 6.1 Current Situation in the Study Area              | 6-1        |
| 6.1.1 Agricultural Production                        | 6-1        |
| 6.1.2 Agricultural Marketing                         | 6-5        |
| 6.2 Potentials and Constrains                        | 6-8        |
| 6.3 Planning for the Future                          | 6-9        |
| <br>   |            |
| <b>7. Agricultural Infrastructure</b>                | <b>7-1</b> |
| 7.1 General  | 7-1        |
| 7.2 Existing Agricultural Infrastructure             | 7-1        |
| 7.2.1 Dike   | 7-1        |
| 7.2.2 Road   | 7-3        |
| 7.2.3 Irrigation and Drainage                        | 7-3        |
| 7.3 Hydrograph of the Incomati River                 | 7-6        |
| 7.3.1 The River                                      | 7-6        |
| 7.3.2 River Stage Observation                        | 7-6        |
| 7.3.3 Floods in 2000                                 | 7-7        |
| 7.3.4 Annual Maximum Flood Levels                    | 7-7        |
| 7.4 Potentials and Constraints                       | 7-8        |
| 7.4.1 Floods of Incomati River                       | 7-8        |
| 7.4.2 Drainage                                       | 7-8        |
| 7.4.3 Irrigation                                     | 7-9        |
| 7.5 Planning for the Future                          | 7-9        |
| 7.5.1 General  | 7-9        |

|   |             |
|---|-------------|
| 7.5.2 Flood Protection Dikes                                  | 7-10        |
| 7.5.3 Drainage Improvement                                    | 7-10        |
| 7.5.4 Irrigation Improvement                                  | 7-11        |
| <b>8. Livestock</b>   | <b>8-1</b>  |
| 8.1 Current Situation   | 8-1         |
| 8.2 Potentials and Constraints                                | 8-1         |
| 8.3 Planning for the Future                                   | 8-3         |
| <b>9. Land-mine Situation</b>                                 | <b>9-1</b>  |
| <b>10. Assistance to Flood Victims</b>                        | <b>10-1</b> |
| 10.1 Introduction   | 10-1        |
| 10.2 Flood Damages  | 10-1        |
| 10.3 Survey for Assistance to Flood Victims                   | 10-1        |
| 10.4 Participation of Villagers                               | 10-3        |
| 10.5 Design and Implementation of Dike Rehabilitation Program | 10-3        |
| 10.6 Topics on Dike Rehabilitation                            | 10-7        |
| 10.7 Impacts of the Program                                   | 10-10       |
| <b>Part II: Pilot Action Plans</b>                            |             |
| <b>11. Selection Process of the Pilot Action Plans</b>        | <b>11-1</b> |
| 11.1 Background and Objective                                 | 11-1        |
| 11.2 Methodology  | 11-1        |
| 11.3 Selection Processes of the Pilot Action Plans            | 11-2        |
| 11.4 Monitoring of the Pilot Action Plans                     | 11-8        |
| 11.5 Lessons for the Master Plan                              | 11-8        |
| <b>12. Village Organization Development Program</b>           | <b>12-1</b> |
| 12.1 Objectives   | 12-1        |
| 12.2 Target Groups and Areas                                  | 12-1        |
| 12.3 Main Features (Approaches and Strategies)                | 12-1        |
| 12.4 Organization for Implementation and Monitoring           | 12-2        |
| 12.5 Planned and Actual Activities                            | 12-3        |

|  |             |
|--|-------------|
| 12.6 Results of Process Monitoring and Evaluation                              | 12-5        |
| 12.7 Lessons for Master Plan   | 12-5        |
| <b>13. Animal Traction Program</b>   | <b>13-1</b> |
| 13.1 Objectives  | 13-1        |
| 13.2 Target Groups and Areas   | 13-1        |
| 13.3 Main Features (Approaches and Strategies)                                 | 13-2        |
| 13.4 Organization for Implementation and Monitoring                            | 13-3        |
| 13.5 Planned and Actual Activities   | 13-4        |
| 13.6 Results of Process Monitoring   | 13-6        |
| 13.7 Results of Evaluation   | 13-7        |
| 13.8 Lessons for Master Plan   | 13-8        |
| <b>14. Low External Input Agriculture Program</b>                              | <b>14-1</b> |
| 14.1 Objectives  | 14-1        |
| 14.2 Target Groups and Areas   | 14-1        |
| 14.3 Main Features (Approaches and Strategies)                                 | 14-1        |
| 14.4 Organization for Implementation and Monitoring                            | 14-2        |
| 14.5 Planned and Actual Activities   | 14-2        |
| 14.6 Results of Process Monitoring   | 14-3        |
| 14.7 Results of Evaluation   | 14-4        |
| 14.8 Lessons for Master Plan   | 14-7        |
| <b>15. Rural Water Supply and Water Users' Group Capacity Building Program</b> | <b>15-1</b> |
| 15.1 Objectives  | 15-1        |
| 15.2 Target Groups and Areas   | 15-1        |
| 15.3 Main Features (Approaches and Strategies)                                 | 15-1        |
| 15.4 Organization for Implementation and Monitoring                            | 15-2        |
| 15.5 Planned and Actual Activities   | 15-3        |
| 15.6 Results of Process Monitoring   | 15-5        |
| 15.7 Results of Evaluation   | 15-5        |
| 15.8 Lessons for the Master Plan   | 15-8        |
| <b>16. Improved Cooking Stove Program</b>                                      | <b>16-1</b> |
| 16.1 Objectives  | 16-1        |

|  |             |
|--|-------------|
| 16.2 Target Groups   | 16-1        |
| 16.3 Main Features (Approaches and Strategies)                         | 16-1        |
| 16.4 Organization for Implementation and Monitoring                    | 16-3        |
| 16.5 Planned and Actual Activities (including reasons for differences) | 16-3        |
| 16.6 Result of Process Monitoring                                      | 16-5        |
| 16.7 Result of Evaluation  | 16-6        |
| 16.8 Lessons for Master Plan   | 16-6        |
| <b>17. Chicken Raising Program</b>                                     | <b>17-1</b> |
| 17.1 Objectives  | 17-1        |
| 17.2 Target Group and Area   | 17-1        |
| 17.3 Main Features (Approaches and Strategies)                         | 17-1        |
| 17.4 Organization for Implementation and Monitoring                    | 17-1        |
| 17.5 Planned and Actual Activities                                     | 17-2        |
| 17.6 Results of Process Monitoring                                     | 17-3        |
| 17.7 Results of Evaluation   | 17-4        |
| 17.8 Lessons for Master Plan   | 17-4        |
| <b>18. Food Shop Management Program for Widows and Single Mothers</b>  | <b>18-1</b> |
| 18.1 Objectives  | 18-1        |
| 18.2 Target Groups   | 18-1        |
| 18.3 Main Features (Approaches and Strategies)                         | 18-1        |
| 18.4 Organization for Implementation and Monitoring                    | 18-1        |
| 18.5 Planned and Actual Activities                                     | 18-1        |
| 18.6 Result of Process Monitoring and Evaluation                       | 18-3        |
| 18.7 Lessons for Master Plan   | 18-3        |
| <b>19. Sewing Training Program for Youth</b>                           | <b>19-1</b> |
| 19.1 Objectives  | 19-1        |
| 19.2 Target Groups and Areas   | 19-1        |
| 19.3 Main Features (Approaches and Strategies)                         | 19-1        |
| 19.4 Organization for Implementation and Monitoring                    | 19-2        |
| 19.5 Planned and Actual Activities                                     | 19-2        |
| 19.6 Result of Process Monitoring and Evaluation                       | 19-3        |

|   |             |
|---|-------------|
| <b>20. Local Administration Capacity Building Program</b>               | <b>20-1</b> |
| 20.1 Objectives   | 20-1        |
| 20.2 Target Groups  | 20-1        |
| 20.3 Approaches   | 20-1        |
| 20.4 First Workshop Conducted on August 30th, 2001                      | 20-1        |
| 20.5 Second Workshop Conducted on November 21st and 22nd, 2001          | 20-4        |
| 20.6 Third Workshop Conducted on February 28th, 2002                    | 20-7        |
| 20.7 Workshop Conducted on March 9th, 2002 for the Instructors of IFAPA | 20-10       |

### **Part III: Master Plan and a Model Approach**

|  |             |
|--|-------------|
| <b>21. Process of Formulating Village Development Master Plan</b>                | <b>21-1</b> |
| 21.1 Process of Formulating Village Development Master Plan                      | 21-1        |
| 21.2 Basic Development Objectives Based on Analysis of Five Capitals             | 21-2        |
| 21.3 Needs Identified through PRA  | 21-5        |
| 21.4 Basic Framework of Village Development Master Plan                          | 21-6        |
| <b>22. Major Lessons Learned from Pilot Action Plans</b>                         | <b>22-1</b> |
| 22.1 Strengths and Limits of the Pilot Action Plans                              | 22-1        |
| 22.2 Major Lessons Learned for the Implementation Methods of Action Programs     | 22-1        |
| 22.3 Major Lessons Learned for Village Development Master Plan in the Study Area | 22-6        |
| <b>23. Village Development Mater Plan for the Study Area</b>                     | <b>23-1</b> |
| 23.1 Agriculture and Livestock   | 23-6        |
| 23.1.1 Agriculture   | 23-6        |
| 23.1.2 Agricultural Infrastructure   | 23-11       |
| 23.1.3 Livestock   | 23-15       |
| 23.2 Basic Human Needs   | 23-19       |
| 23.2.1 Education   | 23-19       |
| 23.2.2 Health  | 23-23       |
| 23.2.3 Water Supply  | 23-27       |
| 23.2.4 Road  | 23-34       |
| 23.2.5 Electricity   | 23-39       |
| 23.2.6 Women   | 23-44       |
| 23.3 Income Generation and Self-Employment Creation                              | 23-47       |



|  |             |
|--|-------------|
| 23.4 Natural Resource and Environment  | 23-51       |
| 23.5 Capacity Building   | 23-54       |
| 23.5.1 Village Organizations   | 23-54       |
| 23.5.2 Local Administration  | 23-58       |
| <b>24. Model Approach for Self-Reliant Village Development in Mozambique</b>                     | <b>24-1</b> |
| 24.1 Common Situation of Rural Villages in Mozambique  | 24-1        |
| 24.2 Typical Steps for Self-Reliant Village Development  | 24-2        |
| 24.3 Example of Appropriate Program for Self-Reliant Village Development                         | 24-11       |
| 24.4 Possible Funding Mechanism for Village Development: Community Development<br>Revolving Fund | 24-13       |
| 24.5 Internet Resources for Self-Reliant Village Development                                     | 24-16       |

## **Appendix**

### **A.1 Minutes of Meetings**

|  |          |
|--|----------|
| A.1.1 Scope of Work (on February 8, 2000)  | A.1-1-1  |
| A.1.2 Minutes of the Meeting on the Scope of Work (on February 8, 2000)                              | A.1-2-1  |
| A.1.3 Minutes of the Meetings on Inception Report (on July 18 and 19, 2000)                          | A.1-3-1  |
| A.1.4 Minutes of the Meeting on Emergency Assistance to Flood Victim<br>(on September 7, 2000)       | A.1-4-1  |
| A.1.5 Minutes of the Working Group Meeting on Dike Rehabilitation Program<br>(on September 20, 2000) | A.1-5-1  |
| A.1.6 Minutes of the Meeting on Progress Report (1) (on November 9, 2000)                            | A.1-6-1  |
| A.1.7 Minutes of the Meeting on Interim Report (on February 7, 2001)                                 | A.1-7-1  |
| A.1.8 Minutes of the Meeting on Progress Report (2) (on March 20, 2001)                              | A.1-8-1  |
| A.1.9 Minutes of the Meeting on Progress Report (3) (on September 4, 2001)                           | A.1-9-1  |
| A.1.10 Minutes of the Meeting on Progress Report (4) (on March 14, 2002)                             | A.1-10-1 |
| A.1.11 Minutes of the Meetings on Draft Final Report (on October 22, 23 and 24, 2002)                | A.1-11-1 |
| A.1.12 Report of the Rural Development Seminar in Maputo (on October 24, 2002)                       | A.1-12-1 |

### **A.2 Results of Surveys and Workshops**

|   |                |
|---|----------------|
| <b>A.2.1 Participatory Rural Appraisal (PRA)</b>                | <b>A.2-1-1</b> |
| A.2.1.1 Methodology   | A.2-1-1        |
| A.2.1.2 Major Results form Participatory Rural Appraisal (PRA)  | A.2-1-3        |
| A.2.1.3 Problems Encountered During PRA                         | A.2-1-14       |
| A.2.1.4 Lessons for Participatory Development in the Study Area | A.2-1-15       |
| <b>A.2.2 Village Organizations Self-Diagnosis Workshop</b>      | <b>A.2-2-1</b> |
| A.2.2.1 Background and Objectives                               | A.2-2-1        |
| A.2.2.2 Methodology   | A.2-2-1        |
| A.2.2.3 Findings through the Workshops                          | A.2-2-3        |
| A.2.2.4 Facilitating Issues                                     | A.2-2-5        |
| A.2.2.5 Conclusions and Recommendations                         | A.2-2-6        |

|  |                |
|--|----------------|
| <b>A.2.3 Survey of Water Users' Groups</b>                       | <b>A.2-3-1</b> |
| A.2.3.1 Introduction   | A.2-3-1        |
| A.2.3.2 Objectives   | A.2-3-1        |
| A.2.3.3 Methodology  | A.2-3-2        |
| A.2.3.4 Organization for Implementation                          | A.2-3-2        |
| A.2.3.5 Summary of Survey Results                                | A.2-3-3        |
| A.2.3.6 Feedback from the Study Team                             | A.2-3-8        |
| <br>   |                |
| <b>A.2.4 Survey of Livestock Production</b>                      | <b>A.2-4-1</b> |
| A.2.4.1 Introduction   | A.2-4-1        |
| A.2.4.2 Objectives   | A.2-4-1        |
| A.2.4.3 Methodology  | A.2-4-1        |
| A.2.4.4 Organization for Implementation                          | A.2-4-1        |
| A.2.4.5 Summary of Survey Results                                | A.2-4-1        |
| A.2.4.5.1 Number of Livestock                                    | A.2-4-1        |
| A.2.4.5.2 Breeds   | A.2-4-2        |
| A.2.4.5.3 Reproductive Management                                | A.2-4-3        |
| A.2.4.5.4 Feeding Management                                     | A.2-4-4        |
| A.2.4.5.5 Sanitary Management                                    | A.2-4-4        |
| A.2.4.5.7 Marketing and Consumption                              | A.2-4-5        |
| A.2.4.5.8 National Policy and Strategy for Livestock Development | A.2-4-6        |
| A.2.4.5.9 Livestock Restocking Program                           | A.2-4-6        |
| A.2.4.5.10 ATAP activities in the Study Area                     | A.2-4-8        |
| A.2.4.5.11 Conclusion and Recommendations                        | A.2-4-10       |
| <br>   |                |
| <b>A.2.5 Baseline Survey</b>                                     | <b>A.2-5-1</b> |
| A.2.5.1 Objectives   | A.2-5-1        |
| A.2.5.2 Methodology  | A.2-5-1        |
| A.2.5.3 Selection and Training of Local Facilitators             | A.2-5-3        |
| A.2.5.4 Results of Pre-testing                                   | A.2-5-3        |
| A.2.5.5 Results of the Focus Group Discussions                   | A.2-5-4        |
| A.2.5.6 Results of the Household Questionnaire Survey            | A.2-5-11       |
| Annex 1 Manual for Facilitators on Baseline Survey               | A.2-5-20       |
| Annex 2 Household Questionnaire Form                             | A.2-5-24       |

|  |                |
|--|----------------|
| <b>A.2.6 Post-Pilot Survey</b>                               | <b>A.2-6-1</b> |
| A.2.6.1 Introduction   | A.2-6-1        |
| A.2.6.2 Objective  | A.2-6-1        |
| A.2.6.3 Methodology  | A.2-6-3        |
| A.2.6.4 Organization for Implementing the Survey             | A.2-6-3        |
| A.2.6.5 Summary of Survey Results                            | A.2-6-4        |
| <br>   |                |
| <b>A.2.7 Participatory Evaluation Workshop</b>               | <b>A.2-7-1</b> |
| A.2.7.1 Introduction   | A.2-7-1        |
| A.2.7.2 Objectives   | A.2-7-1        |
| A.2.7.3 Participatory Evaluation Workshop in Munguine        | A.2-7-1        |
| A.2.7.3.1 Plenary Session                                    | A.2-7-2        |
| A.2.7.3.2 Lessons Learned                                    | A.2-7-5        |
| A.2.7.4 Participatory Evaluation Workshop in Pateque/Maluana | A.2-7-5        |
| A.2.7.4.1 Plenary Session                                    | A.2-7-5        |
| A.2.7.4.2 Lessons Learned                                    | A.2-7-7        |
| <br>   |                |
| <b>A.2.8 Survey of a Nearby Village</b>                      | <b>A.2-8-1</b> |
| A.2.8.1 Objectives   | A.2-8-1        |
| A.2.8.2 Methodology  | A.2-8-1        |
| A.2.8.3 Organisation for Implementation                      | A.2-8-2        |
| A.2.8.4 Summary of the Results                               | A.2-8-3        |

# List of Tables and Figures

## 1. Introduction

|  |      |
|--|------|
| Table 1.1 Assignment Schedule (First Fiscal Year)  | 1-5  |
| Table 1.2 Assignment Schedule (Second Fiscal Year) | 1-6  |
| Table 1.3 Assignment Schedule (Third Fiscal Year)  | 1-7  |
| Table 1.4 Work Flowchart of the Study              | 1-12 |
| Table 1.5 Work Schedule                            | 1-14 |

## 2. Local Administration

|  |      |
|--|------|
| Table 2.1 Summarize Donors' Activities in the Area of Decentralization | 2-5  |
| Figure 2.1 Three Components of the Nampula Model                       | 2-9  |
| Box 2.1. The Case of Model Decentralization in Nampula Province        | 2-17 |

## 3. Village Organizations, NGOs, Land Tenure

|  |     |
|--|-----|
| Table 3.1 Overview of Village Organizations in Munguine and Maluana Localities   | 3-3 |
| Figure 3.1 Farm Land Allocated for Village Organizations in Munguine and Maluana |     |
| Locality   | 3-4 |
| Box 3.1 Association Tchuri   | 3-2 |
| Box 3.2 Association Matchanihomo   | 3-2 |
| Box 3.3 Co-operative Independence or Death                                       | 3-5 |
| Box 3.4 Co-operative Pateque   | 3-5 |

## 4. Women

|   |     |
|---|-----|
| Box 4.1. A Talk with Ms. Elisabeta Mondlane in Munguine | 4-1 |
| Box 4.2. A Talk with Mr. Sonâncio Chirindza in Maluana  | 4-4 |
| Box 4.3. A Talk with Mr. Filipe Mucave in Maluana       | 4-5 |

## 5. Rural Water Supply

|   |      |
|---|------|
| Table 5.1 Technical Data: Compilation of all boreholes studied in Maluana Administrative Post   | 5-15 |
| Table 5.2 Management Data: Compilation of all boreholes studied in Maluana Administrative Post  | 5-16 |
| Table 5.3 Locations where Water Samples were collected - Maluana / Munguine Water Point<br>Inventory and tested at the Aguas de Moçambique Laboratory (Full Chemical Analysis - |      |

|   |      |
|---|------|
| September 2000)   | 5-17 |
| Table 5.4 Water Sample Results - Maluana / Munguine Water Point Inventory Tested at the<br>Aguas de Moçambique Laboratory (Full Chemical Analysis - September 2000) | 5-18 |
| Figure 5.1 Map of Water Points in the Study Area  | 5-14 |
| <br>  |      |
| <b>6. Agricultural Production and Marketing</b>   |      |
| Table 6.1 Yield of the Major Crops  | 6-4  |
| Table 6.2 Farm-gate Prices of the Major Crops   | 6-5  |
| Table 6.3 Price Fluctuation for Selected Vegetables in 1998-2000  | 6-8  |
| Figure 6.1 Meteorological Data (Manhiça Station, 1990-1999)   | 6-1  |
| Figure 6.2 Cropping Pattern of the Major Crops  | 6-3  |
| <br>  |      |
| <b>7. Agricultural Infrastructure</b>   |      |
| Table 7.1 Flood Protection Dike   | 7-2  |
| Table 7.2 Road Length   | 7-3  |
| Table 7.3 Average Monthly Rainfall  | 7-4  |
| Table 7.4 Main Canals   | 7-6  |
| Table 7.5 The Highest Five Flood Levels   | 7-7  |
| Table 7.6 Probable Maximum Flood Levels   | 7-8  |
| <br>  |      |
| <b>9. Land-mine Situation</b>   |      |
| Figure 9.1 Location of Uncleared Land-mines around Manhiça District, Maputo Province  | 9-2  |
| <br>  |      |
| <b>10. Assistance to Flood Victims</b>  |      |
| Table 10.1 Numbers of Patients in Manhiça District  | 10-3 |
| Table 10.2 Participatory Approaches in the Study  | 10-4 |
| Table 10.3 Working Volume for Damages of Dikes  | 10-5 |
| Table 10.4 Compensation for Workers (20 net working days)   | 10-6 |
| Table 10.5 Participants and Working Period  | 10-6 |
| Table 10.6 Work Period (Year: 2000)   | 10-8 |
| <br>  |      |
| <b>11. Selection Process of the Pilot Action Plans</b>  |      |
| Table 11.1 List of the Proposed Pilot Action Plans for the First Selection (Phase 1)  | 11-4 |
| Table 11.2 List of the Proposed Pilot Action Plans for the Second Selection (Phase 2)   | 11-5 |

#### **14. Low External Input Agriculture Program**

|   |      |
|---|------|
| Table 14.1 Village Organizations Participating in the Program | 14-1 |
| Table 14.2 Differences between Planned and Actual Activities  | 14-3 |
| Table 14.3 Performance of Community Work during the Program   | 14-5 |

#### **16. Improved Cooking Stove Program**

|  |      |
|--|------|
| Table 16.1 Calendar and Objectives of the Survey and Seminars            | 16-3 |
| Figure 16.1 Portable Cooking Stoves Under Experimentation in GTZ Project | 16-2 |
| Figure 16.2 Home-made Enzaro Jiko in Kenya                               | 16-2 |
| Figure 16.3 Fixed Cooking Stove with Locally Available Materials         | 16-2 |

#### **20. Local Administration Capacity Building Program**

|  |       |
|--|-------|
| Figure 20.1 Sample Image of the Present and Ideal States of the District from the First Workshop | 20-2  |
| Annex to Chapter 20. Self-Diagnosis of Meetings: 20 Questions on Meetings                        | 20-13 |

#### **21. Process of Formulating Village Development Master Plan**

|  |      |
|--|------|
| Table 21.1 Strength, Weakness, Opportunity and Threat (SWOT) regarding Five Capitals   | 21-3 |
| Table 21.2 Short-, Mid- and Long-Term Objectives in Village Development Master Plan    | 21-7 |
| Table 21.3 Relationship between Village Development Master Plan and Pilot Action Plans | 21-8 |
| Figure 21.1 Process of Formulating Village Development Plan in the Study Area          | 21-2 |
| Figure 21.2 Translating Results of SWOT Analysis into Basic Development Objectives     | 21-4 |
| Figure 21.3 Relationship among Five Basic Development Objectives                       | 21-5 |

#### **22. Major Lessons Learned from Pilot Action Plans**

|  |      |
|--|------|
| Table 22.1 Target Groups and Major Activities of the Pilot Action Plans            | 22-2 |
| Table 22.2 Strengths and Limits of the Pilot Action Plans: Lessons for Master Plan | 22-4 |

#### **23. Village Development Mater Plan for the Study Area**

|  |       |
|--|-------|
| Table 23.1 Implementation Schedule of Action Programs in Village Development Master Plan | 23-2  |
| Table 23.2 Zoning of the Study Area Based on the Result of PRA                           | 23-3  |
| Table 23.3 Target Area and Groups in Action Programs in Village Development Master Plan  | 23-4  |
| Table 23.4 Roughly Estimated Cost of Action Programs in Village Development Master Plan  | 23-5  |
| Table 23.5 Program Digest  | 23-8  |
| Table 23.6 Flood Protection Dike Program   | 23-11 |

|                                      |       |
|--------------------------------------|-------|
| Table 23.7 Canal Improvement Program | 23-12 |
|--------------------------------------|-------|

## **24. Model Approach for Self-Reliant Village Development in Mozambique**

|   |       |
|---|-------|
| Table 24.1 Process of Capacity Development of Rural Women's Groups in Post-War Japan              | 24-6  |
| Table 24.2 Model Process of Capacity Building of Village Organizations                            | 24-7  |
| Table 24.3 Sample of Capacity Assessment Sheet for Village Organizations                          | 24-8  |
| Table 24.4 Comparison between Growth-oriented Approach and Equity-oriented Approach               | 24-9  |
| Figure 24.1 Structure of the Common Problems in Rural Villages in Mozambique                      | 24-3  |
| Figure 24.2 Typical Steps for Planning and Implementing Self-Reliant Village Development Programs | 24-4  |
| Figure 24. 3 One Example of Appropriate Programs for Self-reliant Village Development             | 24-12 |

## **Appendix**

### **A.2.1 Participatory Rural Appraisal (PRA)**

|  |          |
|--|----------|
| Table.A.2.1.1 Women's Daily Routine – Munguine <i>Bairro</i> 1 | A.2-1-12 |
| Table.A.2.1.2 Men's Daily Routine - Munguine <i>Bairro</i> 1   | A.2-1-12 |
| Table A.2.1.3 Problems as Prioritized by Communities           | A.2-1-14 |
| Figure A.2.1.1 Seasonal Calendar of the Highland Area          | A.2-1-10 |
| Figure A.2.1.2 Seasonal Calendar of the Lowland Area           | A.2-1-11 |

### **A.2.2 Village Organizations Self-Diagnosis Workshop**

|  |          |
|--|----------|
| Table A.2.2.1 Problems and Solutions Tree                | A.2-2-9  |
| Table A.2.2.2 SWOT Analysis                              | A.2-2-10 |
| Figure A.2.2.1 Weisbord's Organization Diagnosis Diagram | A.2-2-1  |
| Figure A.2.2.2 Tree of Problems - Munguine Associations  | A.2-2-7  |
| Figure A.2.2.3 Tree of Solutions - Munguine Associations | A.2-2-8  |

### **A.2.3 Survey of Water Users' Groups**

|   |          |
|---|----------|
| Table A.2.3.1 Technical Data for Water Points Proposed for Rehabilitation | A.2-3-11 |
|---|----------|

### **A.2.4 Survey of Livestock Production**

|   |         |
|---|---------|
| Table A.2.4.1 Type and Number of Livestock in Manhiça District (2000) | A.2-4-2 |
| Table A.2.4.2 Number of Livestock in Munguine and Maluana Localities  | A.2-4-2 |
| Table A.2.4.3 Price of Livestock                                      | A.2-4-5 |



|  |          |
|--|----------|
| Table A.2.4.4 Costs of Cattle to the Beneficiaries   | A.2-4-7  |
| Table A.2.4.5 List of ATAP Activities  | A.2-4-9  |
| <b>A.2.5 Baseline Survey</b>   |          |
| Table A.2.5.1 Composition of Households Interviewed by the Household Questionnaire Survey            | A.2-5-3  |
| Table A.2.5.2 Characteristics of Socio-Economic Strata in Bairros 1, 2, 3 and 4 of Munguine Locality | A.2-5-5  |
| Table A.2.5.3 Characteristics of Socio-Economic Strata in Bairro 5 and Xirindza (Munguine Locality)  | A.2-5-5  |
| Table A.2.5.4 Characteristics of Socio-Economic Strata in Bairros 1, 2, 3 in Maluana and Pateque     | A.2-5-6  |
| Table A.2.5.5 Estimated Percentage of the Socio-Economic Strata                                      | A.2-5-7  |
| Figure A.2.5.1 Map of Distribution of Different Socio-Economic Strata in Bairros 1, 2, 3 of Munguine | A.2-5-9  |
| Figure A.2.5.2 Map of Distribution of Different Socio-Economic Strata in Pateque                     | A.2-5-10 |
| Table A.2.5.6 Main Local Language Used by the Heads of Household and Knowledge of Portuguese         | A.2-5-11 |
| Table A.2.5.7 Distribution According to Number of People per Household Interviewed                   | A.2-5-12 |
| Table A.2.5.8 Declared Non-agricultural Income of Households Interviewed                             | A.2-5-12 |
| Table A.2.5.9 Total Livestock Numbers of the Households Interviewed in Munguine                      | A.2-5-13 |
| Table A.2.5.10 Total Livestock Numbers of the Households Interviewed in Maluana                      | A.2-5-13 |
| Table A.2.5.11 Distribution of Livestock per Different Socio-economic Strata, Part 1                 | A.2-5-13 |
| Table A.2.5.12 Distribution of Livestock per Different Socio-economic Strata, Part 2                 | A.2-5-13 |
| Table A.2.5.13 Total of Interviewed Households with Cultivated Lowland Area (Rainy Season Crops)     | A.2-5-16 |
| Table A.2.5.14 Total of Households Interviewed with Cultivated Lowland Area (Dry Season Crops)       | A.2-5-16 |
| Table A.2.5.15 Total of Households Interviewed with Cultivated Highland Area                         | A.2-5-17 |
| Table A.2.5.16 Total of Households Interviewed with Non-Cultivated Land per Socio-economic Strata    | A.2-5-17 |
| Table A.2.5.17 Total Harvest in 2000/2001 Amongst the Households Interviewed                         | A.2-5-18 |
| Table A.2.5.18 Munguine and Maluana Average Time (hours) Spent by People for Each Daily Activity     | A.2-5-18 |
| Table A.2.5.19 Household Access to Water Points  | A.2-5-19 |

### **A.2.6 Post-Pilot Survey**

|  |         |
|--|---------|
| Table A.2.6.1 Key Indicators for Evaluating the Pilot Action Plans | A.2-6-2 |
| Table A.2.6.2 Key Questions to Be Asked                            | A.2-6-3 |
| Table A.2.6.3 Organization for Implementation and Monitoring       | A.2-6-4 |

### **A.2.8 Survey of a Nearby Village**

|  |         |
|--|---------|
| Table.A.2.8.1 Summary Profile of the Targeted Projects - from Focus Group Discussions  | A.2-8-2 |
| Table.A.2.8.2 List of Emergency and Development Activities implemented by ActionAid UK | A.2-8-6 |
| Table.A.2.8.3 Goat Project Beneficiary Contribution Payments by Socio-economic Strata  | A.2-8-8 |
| Table.A.2.8.4 Cattle Project Beneficiary Contribution Payment by Socio-economic Strata | A.2-8-9 |

## List of Abbreviations

|         |  |
|---------|--|
| AAR     | Association for Aid and Relief, Japan  |
| AIDS    | Acquired Immune Deficiency Syndrome  |
| AMODEFA | Mozambican Association for Family Development  |
| AMRU    | Mozambican Association for Rural Women   |
| ANE     | National Roads Administration  |
| a.s.l.  | above sea level  |
| ATAP    | Association of Agro-Livestock Technicians  |
| AWEPA   | Association of European Parliamentarians for Africa                                      |
| BHN     | Basic Human Needs  |
| CBO     | Community-Based Organization   |
| CEFE    | Training and Consulting Unit in Ministry of Labor  |
| DA      | Development Area   |
| DDOPH   | District Department of Public Works and Housing  |
| DESOPOL | Decentralized Social Policy Project (GTZ project)  |
| DFID    | Department for International Development in the United Kingdom                           |
| DINAP   | National Directorate of Livestock  |
| DNA     | National Directorate of Water  |
| DNE     | National Directorate of Energy   |
| DNER    | National Directorate of Rural Extension in Ministry of Agriculture and Rural Development |
| DPOPH   | Provincial Directorate for Public Works and Housing                                      |
| DPPF    | Provincial Directorate for Planning and Finance  |
| DRA     | Demand-Responsive Approach   |
| EN      | National Road  |
| EPAR    | Provincial Rural Water and Sanitation  |
| EP1     | First-level primary education (1st to 5th grades)  |
| EP2     | Second-level primary education (6th and 7th grades)                                      |
| ESG1    | General secondary education (8th to 10th grades)   |
| EU      | European Union   |
| FAO     | Food and Agriculture Organization of the United Nations                                  |
| FRELIMO | Front for the Liberation of Mozambique   |
| GB      | Great Britain  |
| GDP     | Gross Domestic Product   |

|       |   |
|-------|---|
| GOM   | Government of Mozambique  |
| GPS   | Global Positioning System   |
| GTZ   | German Technical Assistance Agency  |
| GPE   | Department of Job Promotion in Ministry of Labor                                |
| HEP   | Hygiene Education Promoter  |
| HDPL  | Human Development Program at Local Level (UNDP project)                         |
| HIV   | Human Immuno-deficiency Virus   |
| IAP   | Teacher Improvement Institute   |
| IDS   | Institute of Development Studies (such as one at University of Sussex in UK)    |
| IFAPA | New Training Institute for Medium-level Civil Servants                          |
| IMAP  | Training Institute for Medium-level Civil Servants (now transformed into IFAPA) |
| IND   | National Institute of Demining  |
| INIA  | National Institute for Agronomic Investigation                                  |
| IPPM  | Integrated Pest and Production Management                                       |
| IRC   | International Water and Sanitation Center                                       |
| JICA  | Mozambican and International NGO Forum in Mozambique                            |
| MADER | Ministry of Agriculture and Rural Development                                   |
| MAE   | Ministry of State Administration  |
| MOL   | Ministry of Labor   |
| MOPH  | Ministry of Public Works and Housing  |
| MPF   | Ministry of Planning and Finance  |
| MRG   | Maintenance and Repair Group  |
| MSL   | Mean Sea Level  |
| MT    | Metical (plural: Meticais) (Mozambican local currency)                          |
| NE    | North East  |
| NGO   | Non-Governmental Organization   |
| NOK   | Norway Kroner   |
| NORAD | Norwegian Agency for Development Cooperation                                    |
| OMM   | Operation, Maintenance and Management   |
| OMR   | Operation, Maintenance and Repair   |
| ORAM  | Rural Association for Mutual Support  |
| PDDM  | Decentralization and Municipal Development Project (GTZ project)                |
| PEC   | Community Participation and Education Facilitator                               |
| PHAST | Participatory Hygiene and Sanitation Transformation (a new methodology for      |

|         |   |
|---------|---|
|         | hygiene education)  |
| PRA     | Participatory Rural Appraisal   |
| PVC     | Polyvinyl Chloride  |
| REFLECT | Regenerated Freirean Literacy through Empowering Community Techniques |
| RENAMO  | Mozambique National Resistance  |
| SA      | South Africa  |
| SAEGA   | Socioeconomic and Gender Anaysis Programme                            |
| SIDA    | Swedish International Development Agency                              |
| SIFAP   | System for Training in Public Administration                          |
| SIP     | Personnel Information System  |
| SNV     | Dutch NGO   |
| SPER    | Provincial Agricultural Services                                      |
| STD     | Sexually Transmitted Diseases   |
| SWAP    | Sector-wide Approach  |
| SWL     | Static Water Level  |
| SWOT    | Strength, Weakness, Opportunity and Threat                            |
| UEM     | University of Eduardo Mondlane  |
| UGC     | General Union of Co-operatives  |
| UK      | United Kingdom  |
| UNAC    | Peasants National Union   |
| UNICEF  | United Nations Children's Fund  |
| UNDP    | United Nations Development Programme                                  |
| USAID   | United States Agency for International Development                    |
| USD     | United States Dollar  |
| VAT     | Value-added Tax   |
| WES     | Vertical Electrical Sounding  |
| VLOM    | Village Level Operation and Maintenance                               |
| WFP     | World Food Programme  |
| WG      | Water Group   |

**Average Exchange Rate:**

1 US Dollar = 24,000 MT (as of March 1st, 2002)

