

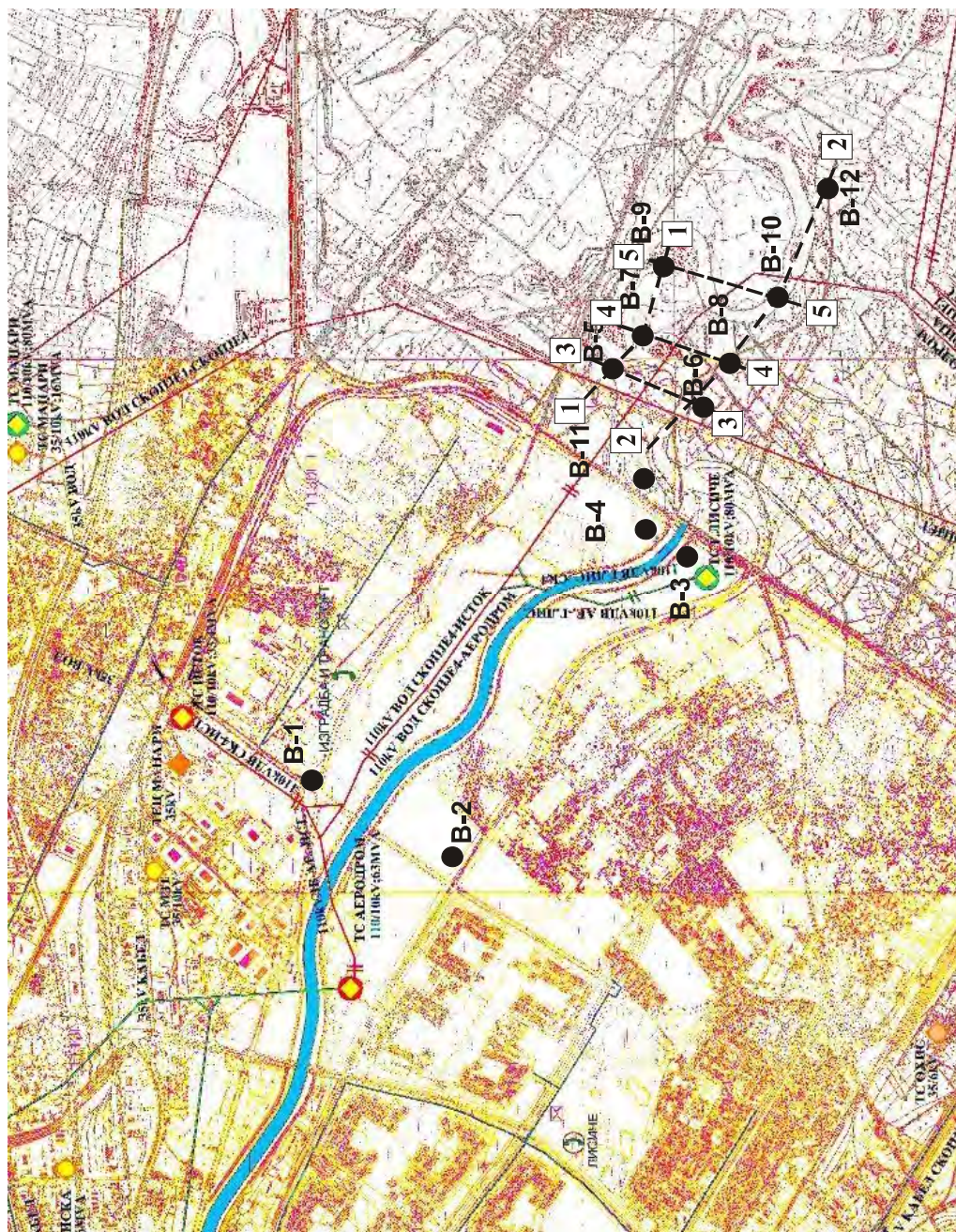
APPENDIXES



DGR "GEOTEHNIKA"
DОО - Skopje

LAYOUT WITH POSITION OF THE BOREHOLES

Structure : The study of wastewater management in Skopje

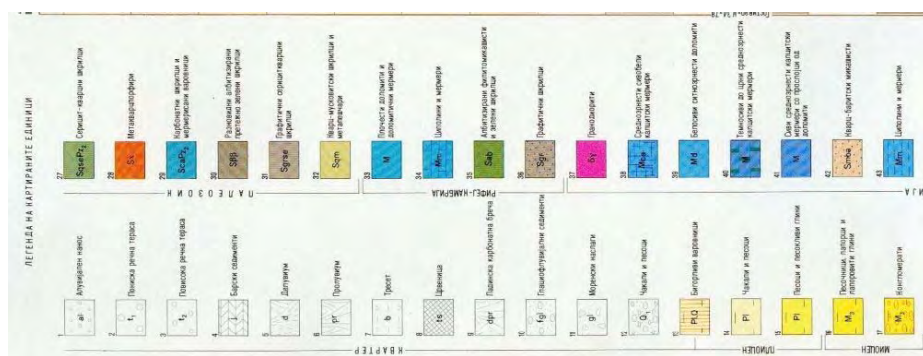
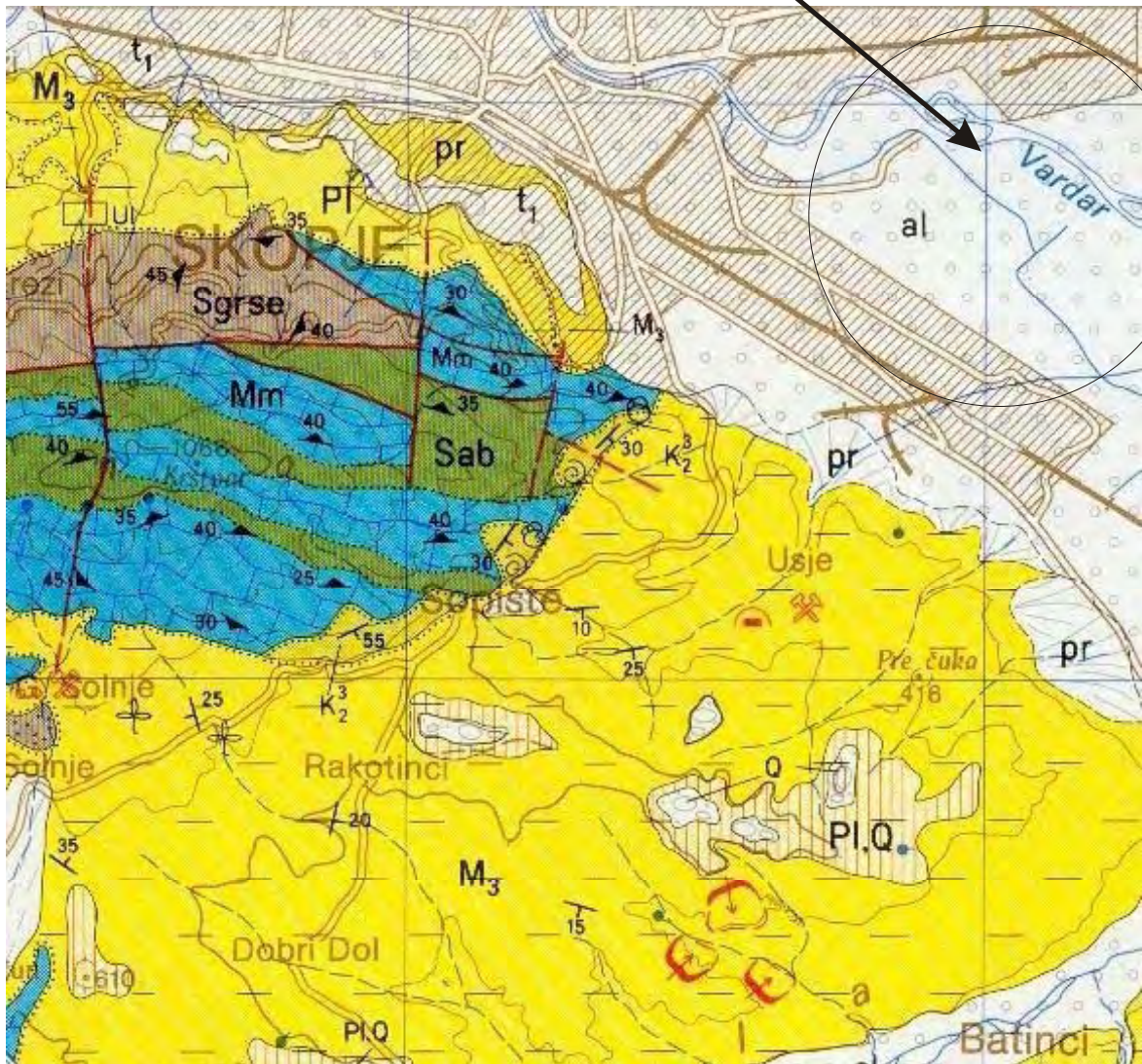


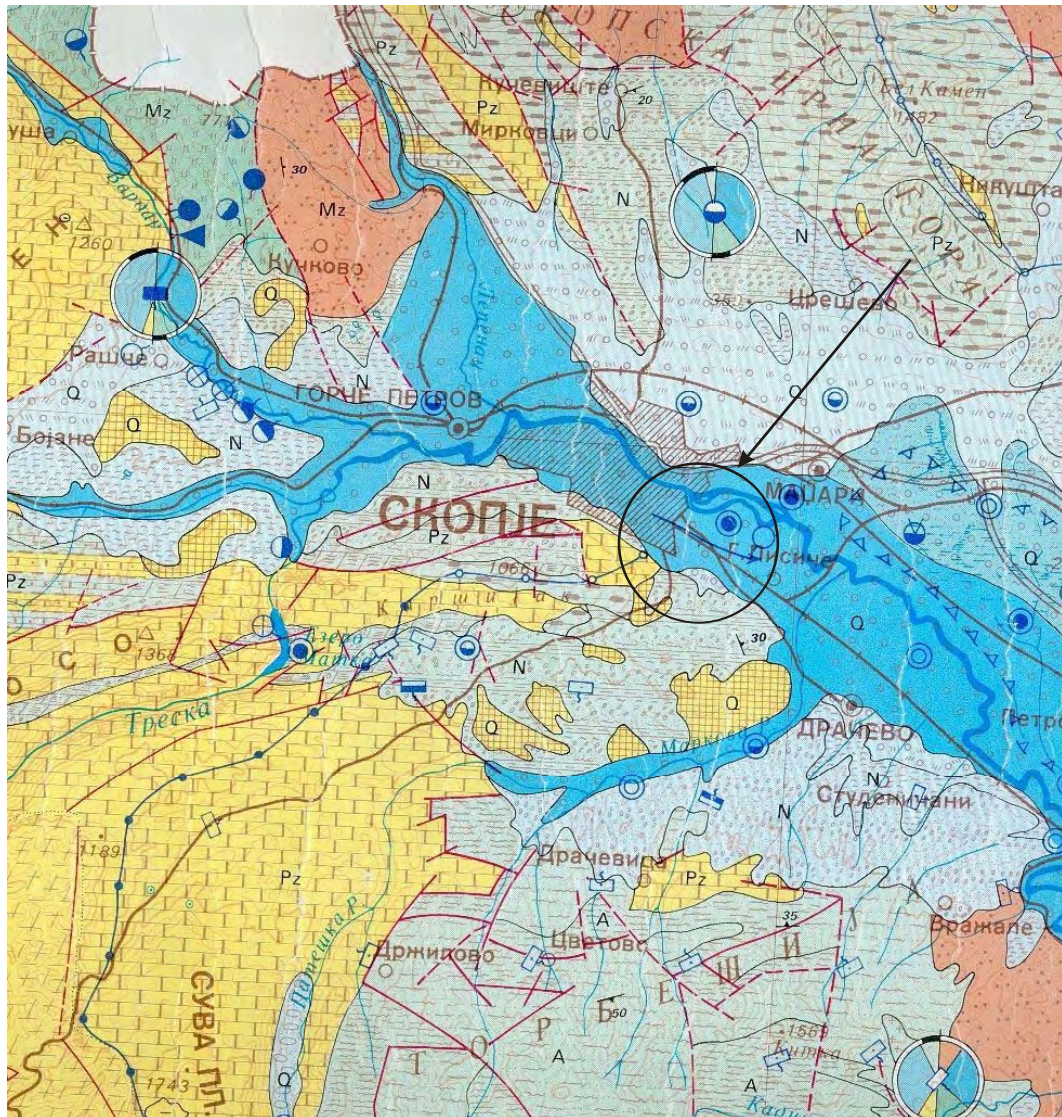
Legend:

● B-i borehole

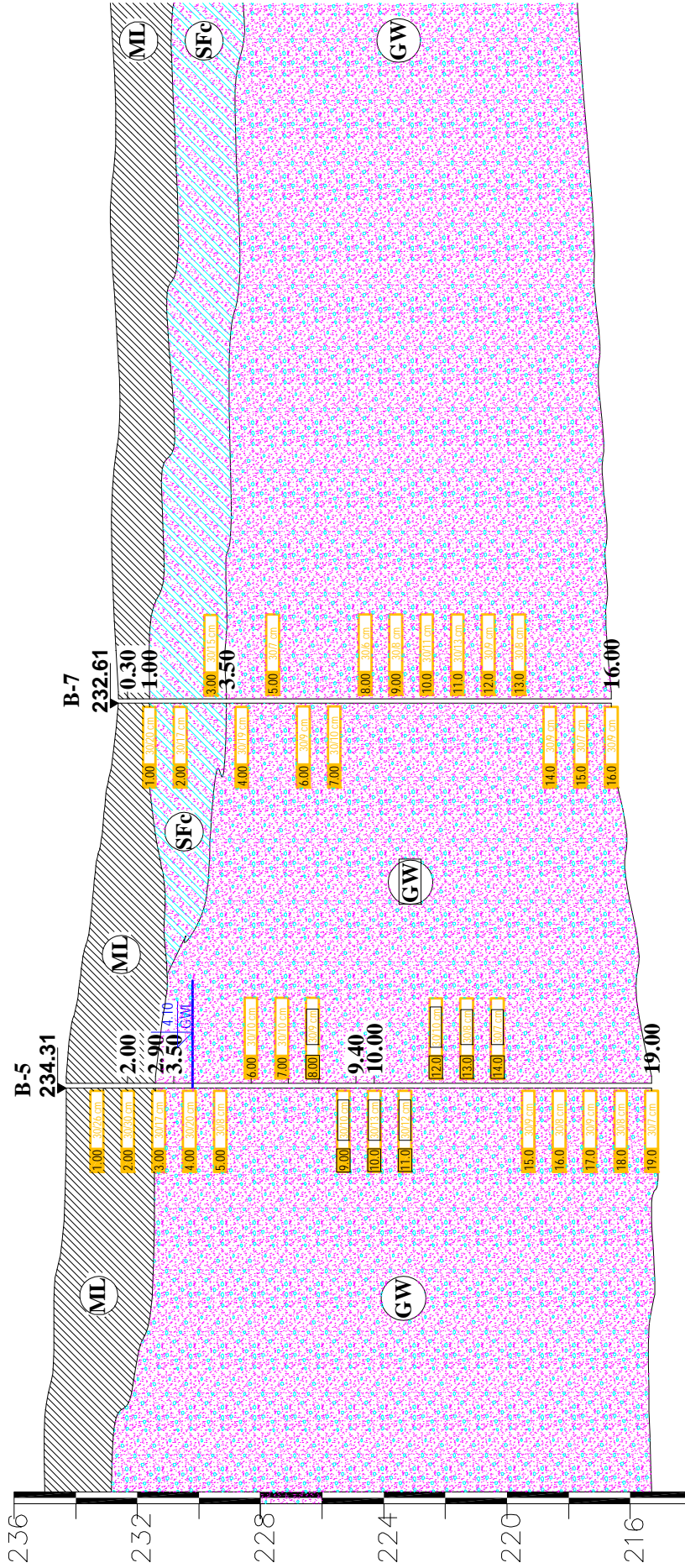
--- i - i

longitudinal profiles



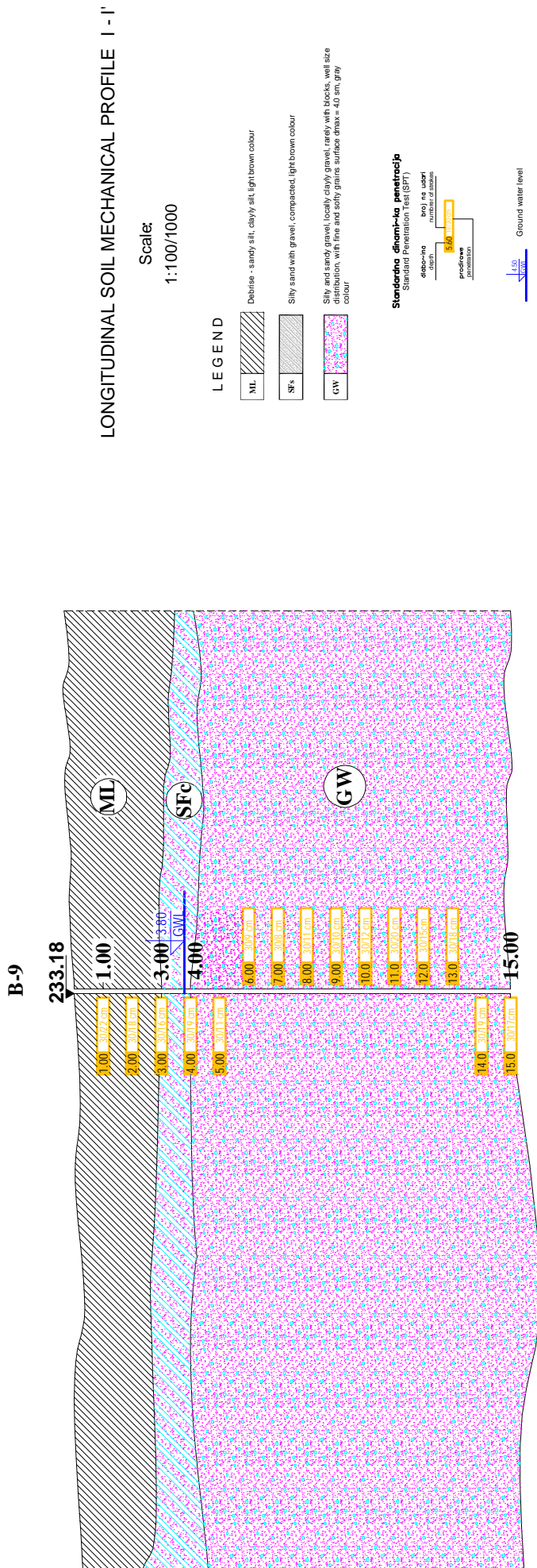


III РЕОНИЗАЦИЈА НА ТЕРЕНОТ ПО ТИПОВИ НА ИЗДАНИ И ИЗДАШНОСТ	
ЗБИЕНИ ТИП НА ИЗДАНИ	
Мошне издашни терени (претемно) преку $10 \text{ lit/sec (kf)} > 10^{-3} \text{ cm/sec}$	
Добро издашни терени (претемно) од $1-10 \text{ lit/sec (kf)} = 10^{-2} - 10^{-3} \text{ cm/sec}$	
Слабо издашни терени (претемно) од $0,1-1 \text{ lit/sec (kf)} < 10^{-3} \text{ cm/sec}$	
ПУКОТИНСКИ ТИП НА ИЗДАНИ	
Добро издашни терени со извори (претемно) $Q > 1 \text{ lit/sec}$	
Слабо издашни терени со извори (претемно) $Q < 1 \text{ lit/sec}$	
КАРСНИ ТИП НА ИЗДАНИ	
Од мошне до слабо издашни терени (наместа извори и $Q > 100 \text{ lit/sec}$)	
Карсно-пукотински тип на издани со мошне променлива издашност	
Безводни терени со извори (претемно) $Q < 0,1 \text{ lit/sec}$	

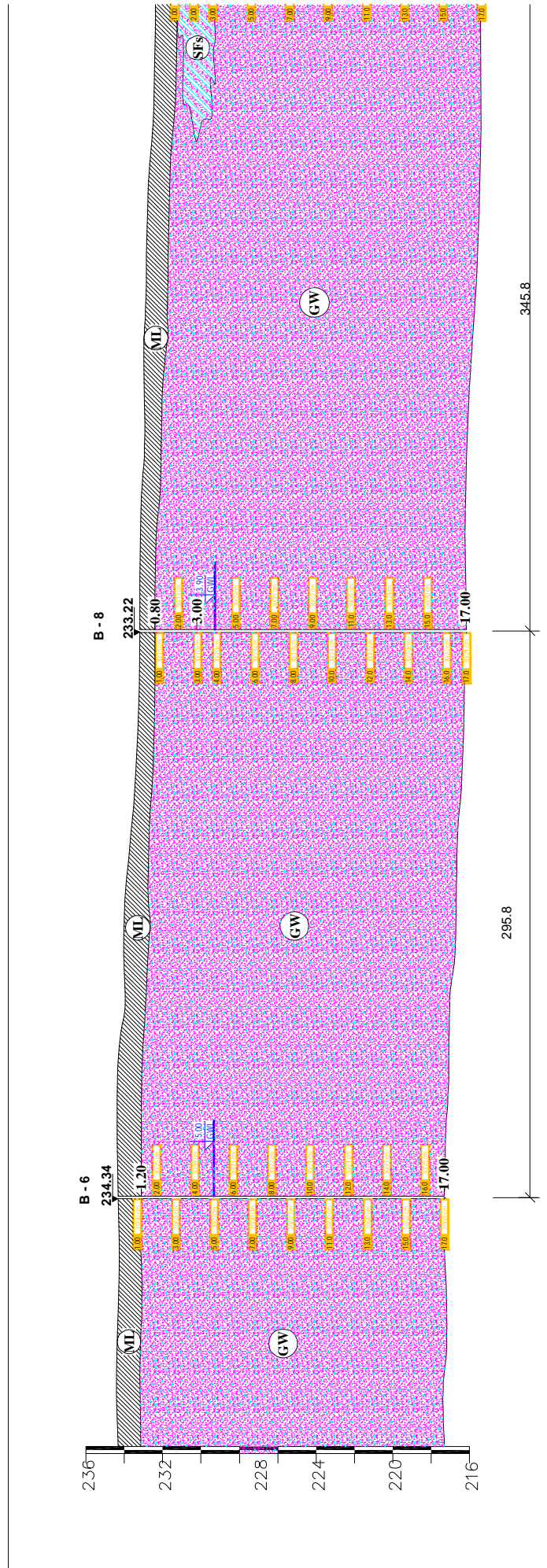


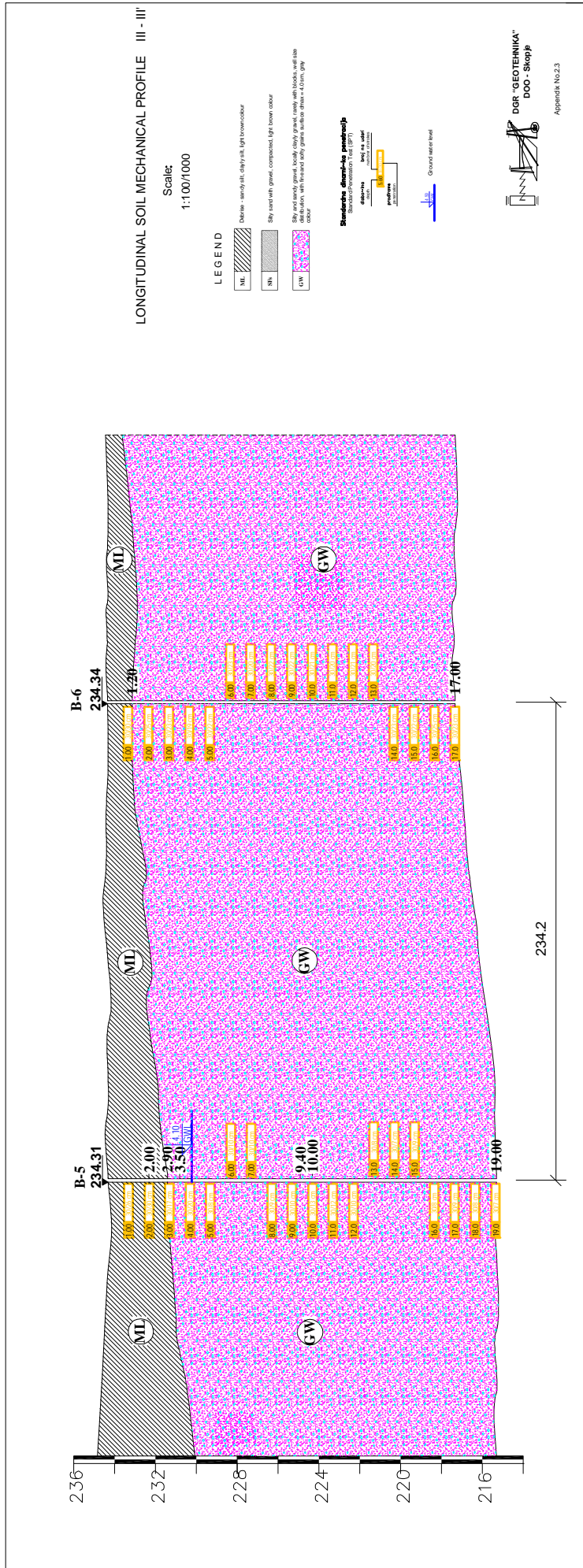
42'

124.9



Appendix No.2.1



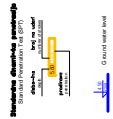


LONGITUDINAL SOIL MECHANICAL PROFILE IV - IV

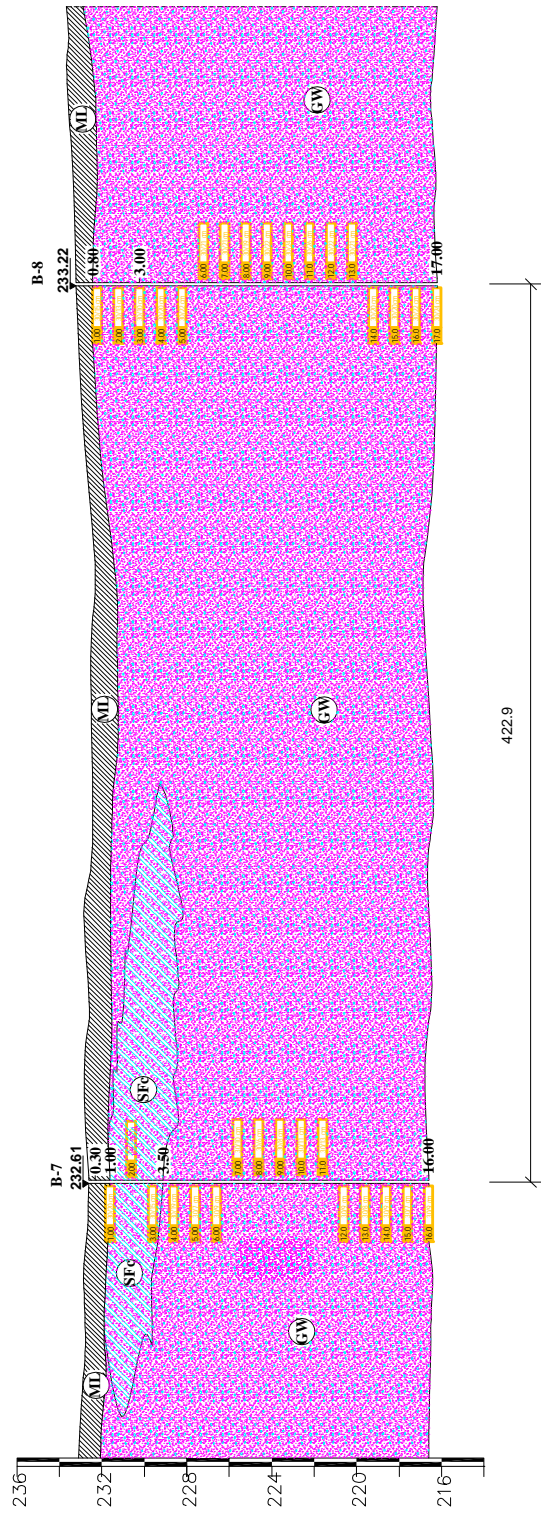
Scale
1:100/1000

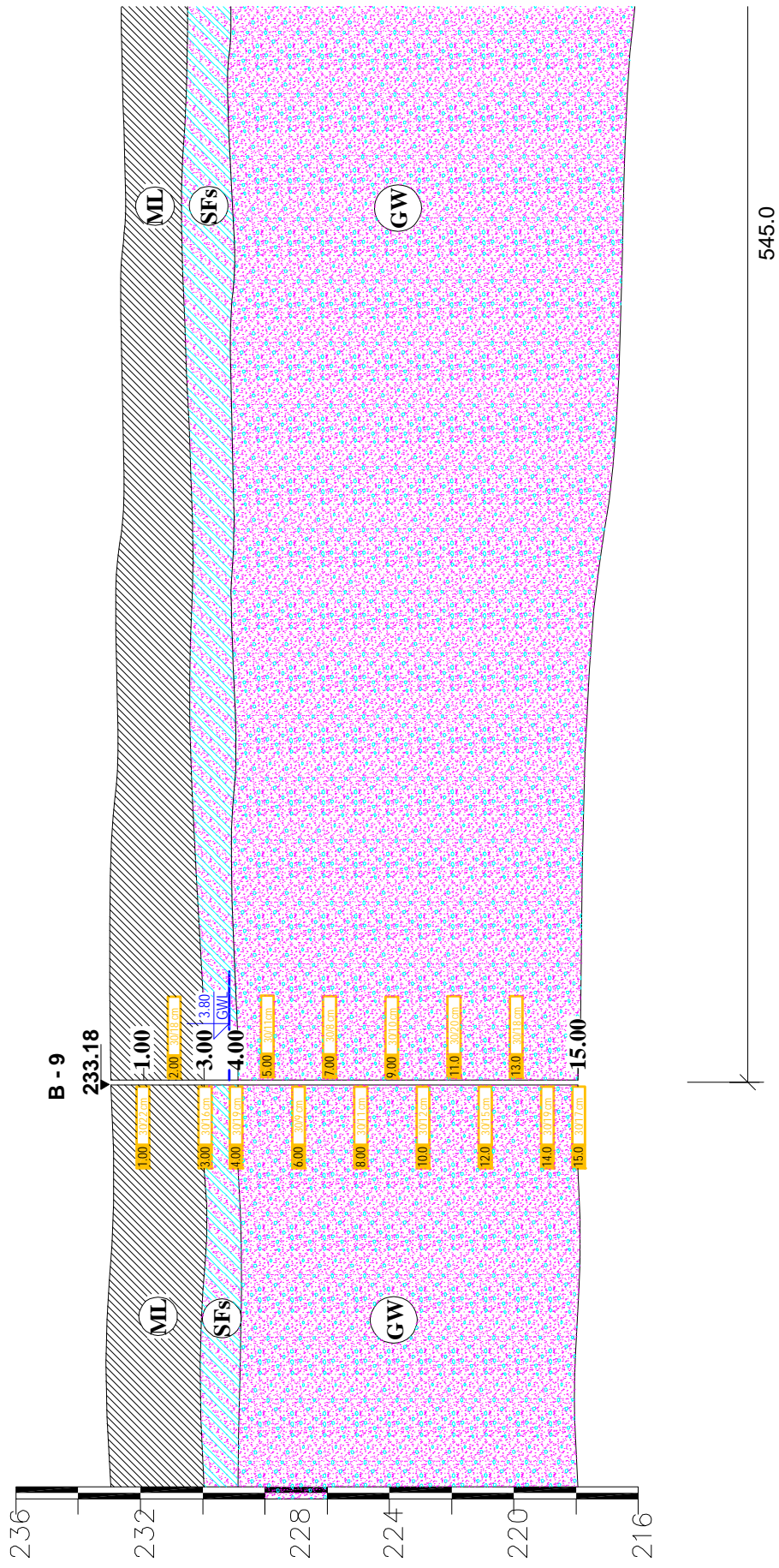
LEGEND

- MI (hatched pattern) - Dva vrsta od, najviše i najniže slojeve
- SH (grey pattern) - Slojevi koji su najviše kompresivni i najviše elastični
- CW (pink pattern) - Slojevi koji su najviše propusni i najviše vodopropusni



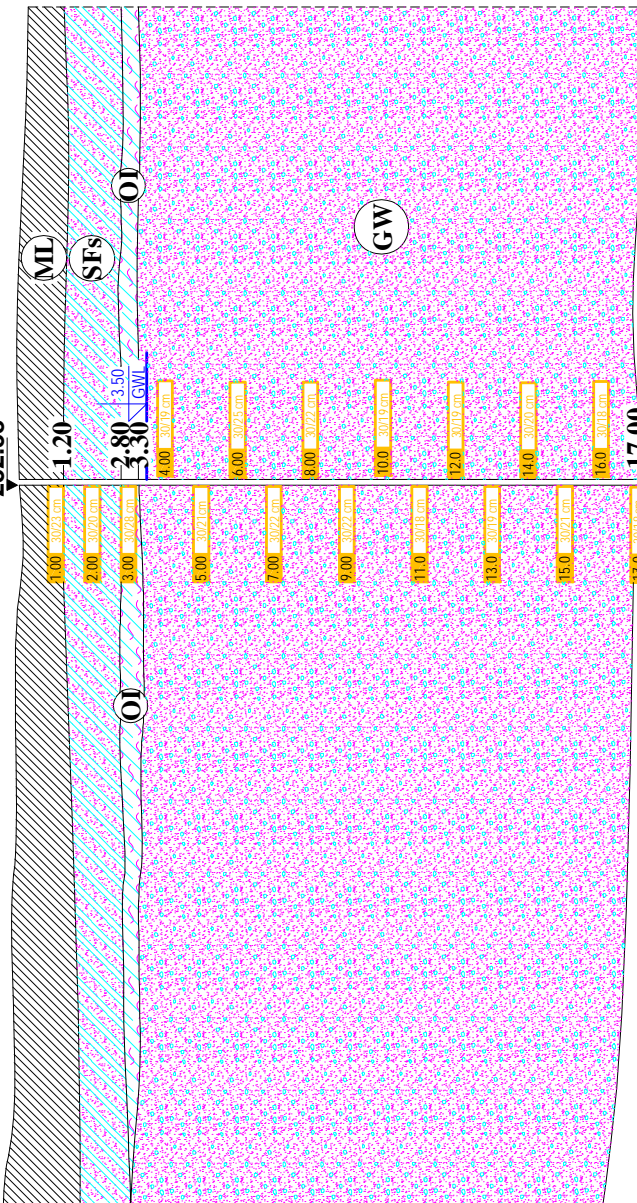
Appendix No.24





B - 10

232.38



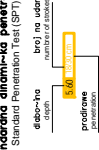
LONGITUDINAL SOIL MECHANICAL PROFILE V - V'

Scale:
1:100/1000

LEGEND

- ML** Debris - sandy silt, clayey silt, light brown colour
- SFs** Silty sand with gravel, compacted, light brown colour
- GW** Silty and sandy gravel, locally clayey gravel, rarely with blocks, well size distribution, with fine and soft grains surface diamax = 4.0 mm, gray colour
- OI** Mud with gray - blue colour

Standarda dinamika penetracija



Ground water level

