

付属資料 3 質問票及び河川流域機関
(RBO)、水資源公社 (PJT
I&II) の回答

QUESTIONNAIRES

On The water resources development/management and The preservation of water environment in Indonesia

Question	Answer
1. On policy / regulatory system	
1-1. Do you have any documents on government policy / regulatory system for the water resources development / management and the preservation of water environment?	(if yes, write the name of document)
1-2. Do you have any regulations on the demarcation of the related government bodies?	(if yes, write the name of document)
1-3. Do you have any regulations on the coordination among the related government bodies?	(if yes, write the name of document)
1-4. Do you have any regulations on the demarcation between the central government level and the provincial government level?	(if yes, write the name of document)
2. On organization related to the project	
2-1. What are your roles on the water resources development/management and the preservation of water environment?	
2-2. How is the role demarcation among the related organizations?	
2-3. Please explain the items below on the water resources development/management and the preservation of water environment in your	
a) Power	
b) Scope of work	
c) Budget (Balance of revenue, breakdown: management, construction cost, etc.)	
d) Organization/ number of personnel (educational history, year of experience, age, etc.)	
e) Practical ability (actual record of performances, plan of activities)	
f) Deemed subject of the system in the course of the project implementation	
g) Coordination mechanism with the related organizations in the deemed project implementation	
3. Do you have practical guideline / manual on the water resources development?	(If yes, name the title, situation of their application and the process of their establishment)
4. Situation of the base for the project implementation (in Solo City)	
a) Present situation of facilities	
b) Present situation of material and equipment	
5. Are there any activities by the related donors on the water resources development / management? If yes, let us know the items below on the activities;	
a) Principle of cooperation	
b) Present activities including hard component and soft component	

Table Comparison of Answer from RBOs and PJT I & II

Question	BBWS Brantas	BBWS Citarum
1. On organization related to your river basin management		
1-1. What are your roles on the water resources development/management and the preservation of water environment?	<p>The roles of Balai Besar Wilayah Sungai Brantas (BBWS) is development and conservation of water resources in Brantas basin.</p>	<p>Carry out the water resources management that comprises of planning, construction, operation and maintenance in any aspect of water resources conservation, utilization, and water damaging potential management in basin, included develop and manage hydrology system.</p>
1-2. How is the role demarcation among the related organizations regarding to flood control, water allocation, and conservation of environment, respectively?	<p>The role demarcation among: Flood water: BBWS Brantas only handle the flood at Brantas river and tributary and rivers in region work which not managed by local government. Water allocation: in recent BBWS not yet do it, water allocation done by PJT-I. Conservation of environment: Conservation is one of role of BBWS Brantas.</p>	<p>The River Basin Organizations in basin implementing coordination and prepare the concerned programme either regarding to flood control, water allocation or conservation of environment, and the each river basin organization operate the program under a clear mandate.</p>
1-3. Please explain the items below on the water resources development/management and the preservation of water environment in your organization.		
a) Obligation and responsibility	<p>Development, management and operation & maintenance water resources facilities in Region work of BBWS Brantas.</p>	<p>Institutional strengthening and prepare the integrated water resources management program.</p> <ul style="list-style-type: none"> • Develop the utilization of water resources in basin by means of a partnership accountable and sustainable. • Protection and preservation of environment. • Develop and manage the water damaging potential regarding to environment preservation. • Empower and strengthen the basin community in water resources management. • Develop and establish water resources data and information system.
b) Scope of work	<p>Planning, Construction, operation and maintenance</p>	<p>prepare the strategic planning and the integrated master plan in basin.</p> <ul style="list-style-type: none"> • Prepare the program and implementation of water environment preservation basin. • Carry out the water resources management that comprises of conservation, development, utilization and water damaging potential management in basin. • Prepare technical recommendation for water abstraction from river basin. • Develop and manage the hydrology system. • Develop and establish water resources data and information system. • Facilitate the operational of SKPTA (secretariat for implementation coordination of water resources management body in basin level) and PPTPA (operational committed for water resources management in citarum basin). • Empower and strengthen the basin community in water resources management. • Carry out the routine operational and all activities based on the national budget document (DIPA) every year and the guidelines of activities operational.
c) Budget (Balance of revenue, breakdown: management, construction cost, etc.) in 2004, 2005 and 2006.	<p>(Table to be attached) - Budget in 2007 Total budget 525.519.323.000,000 Rp., (Operation 15.01.528.000,000 Rp.) See Table BR-1</p>	<p>See Table Cl-1</p>
d) Organization/ number of personnel (educational history, year of experience, age, etc.)	<p>(Table and figure to be attached) Number of personnel is: - Government employee 635 person (table to be attached) - Non Government employee 610 person</p>	<p>See Table Cl-2</p>

Table Comparison of Answer from RBOs and PJT I & II

Question	BBWS Brantas (Annual implementation plan for requesting budget for 2007/01)	BBWS Citarum
<p>e) Practical ability (actual record of performances, plan of project implementation / requesting items at the time of implementation plan)</p>		<p>See Table CI-3</p>
<p>f) Deemed subject of the system in the course of the project implementation / requesting items at the time of implementation of project</p>	<p>Deemed subject of implementation project is requesting from local government cover drought water, flood and conservation</p>	<ul style="list-style-type: none"> • No land acquisition & Resettlement. • Check the drawings, complete or not. • Carry out the manual check before construction (MC-O) and prepare the construction drawings. • Prepare the volume of additional works (if any) and amendment contract (if approved)
<p>g) What kind of training is given as the capacity building? Please raise the past record of training in recent 3 years in the category as shown in the right column.</p>	<p>(1) As the internal training in PU a. Counseling of river, lake and reservoir operation and maintenance b. Counseling of National of hydrology c. Workshop of supervise and Operation & maintenance of reservoir d. workshop of raise ability of technical planning of safety at beach.</p>	<p>1. The Internal Training in PU (2007) • OM of water resources facilities in Basin. • Develop on human resources, Budgeting and structure of River Basin Organization. • E-Monitoring for fiscal & financial program report. • Good and services procurement. • Implementation of accountability system. • Completion of personnel Data Base in RBO. • Land sliding and flood control counter measure. • Preparing program and budgeting document by computerize. • Sabo engineering • The institutional revitalization for flood management in Jabodetabek (6 river basins). • OM of water resources infrastructures in coordinator level. • Administration and financial management. • Law aspect. • Operational of hydrology system. • Irrigation water efficiency by SRI method.</p>
	<p>(2) As the external training outside of PU None</p>	<p>The external training outside of PU (2007). • NARBO (Network Asian River Basin Organization)</p>

Table Comparison of Answer from RBOs and PJT I & II

Question	BBWS Brantas (If you have, which DG you receive in DGWR and DGRD)? We are never get counseling about it from DGWRD or other. (Write here concrete example(s)) None	BBWS Citarum
b) In the course of water resources management, what kind of counseling do you receive? Please raise concrete example such as water pollution problem or others.		<ul style="list-style-type: none"> - Irrigation efficiency by means of Demploir SRI Method → shortage of water availability in reservoirs. - Land sliding and flood control counter measure → mud flow and flood in lower basin. - OM of water resources facilities → limited government budget allocated for OM.
j) When the training is not well done, what kind of affect is derived in your organization? If you have some affect, how did you tackle the situation?	None	Nothing, so far.
2. Practical guidelines, manuals, etc. 2.1 Do you have practical guideline / manual on the water resources management? Which guidelines are used in your organization in the attached table of guidelines?	If yes, check the manuals you used in the table of guidelines as attached and describe the process of some standard manual establishment and revising) No.	LIST OF EXISTING GUIDELINES See Table C1-4
2.2 Do you have any frame work / master plan for project implementation?	(Just yes or no) Yes.	

Table Comparison of Answer from RBOs and PJT I & II

Question	BBWS Pemali- Juana	BBWS Serayu-Opak	BWS Bali-Penida
<p>1. On organization related to your river basin management</p> <p>1-1. What are your roles on the water resources development/management and the preservation of water environment?</p>	<p>RBMU assignment is to execute management of water resources at River Basin covering</p> <ul style="list-style-type: none"> • Planning • Construction • Operation & Maintenance • Development of water resources • Utilization of water resources • Mitigation of Water Related Disaster <p>See Fig. P1-1 ~ P1-4</p>	<ul style="list-style-type: none"> • Serayu-Bogowonto River are: Progo, Bogowont, Oyo river... Each: Cross Province river • Progo, Opak & Serang River are: Dealing within Jogjakarta Province • Planning → Implementation → O & M for Water Resources, Management 	<p>As the Technical Executor at the Water Resources conservation, Water Resources efficiency and control on water damaging ability on catchment area located below and responsible to the Directorate General of Water Resources through the related Director (Permen PU No.13/PRT/M/2006 Chapter 1, Article 1)</p> <p>See Table BP-1</p>
<p>1-2. How is the role demarcation among the related organizations regarding to flood control, water allocation, and conservation of environment, respectively?</p>	<p>Water Law No.7/2004 describes roles of RBO clearly for river in general and for the irrigation facility, but others such as "Flood Control" are now under discussion as "Role Sharing Discussion".</p>		
<p>1-3. Please explain the items below on the water resources development/management and the preservation of water environment in your organization.</p>			
<p>a) Obligation and responsibility</p>	<p>(Write brief explanation, and details by copies of relevant document) OHP 20, RBMU assignment is to execute management of water resources at River Basin covering</p> <ul style="list-style-type: none"> • Planning • Construction • Operation & Maintenance • Development of water resources • Utilization of water resources • Mitigation of Water Related Disaster 	<p>(Write brief explanation, and details by copies of relevant document)</p> <ul style="list-style-type: none"> • RBO's duties are specified in Ministerial Regulation No.2/PRT/M/2006. See attached Table SO-1. 	<p>Balai Wilayah Sungai is responsible to manage the Water Resources, including design, construction, operational & maintenance, attempt of water resources conservation, water resources efficiency and control on water damaging ability on the catchment Area (Permen PU No.13/PRT/M/2006 Chapter 1, Article 2)</p>
<p>b) Scope of work</p>	<p>There are two River Basins, Jatunseluna River Basin in east part and Pemali Comal River Basin in west part. The rivers consist of Garang, Jagung, Tuntang, Serang, Lusi, Juana, Bodri, Anyar, Klampok, Semarang, Randugunting (Jatunseluna Basins), and Cacaban, Waluh, Comal, Sragi, Sengkarang, Sambong (Pemali Comal Basins) according to the Permen PU 11A.2006.</p>	<p>(Write brief explanation, and details by copies of relevant document)</p> <ul style="list-style-type: none"> • Scope of RBO Serayu-Opak is characterized as i) Sungai Bawah Tanah (Utilization of underground river) in the south-east area, ii) Countermeasures against Mt. Merapi activity, iii) Irrigation on the sand dune near sea coast. 	<ul style="list-style-type: none"> • Composing pattern and design of water resources on catchment area / preservation area on catchment area. / Water resources management on catchment area / Preparing the technical recommendation in providing permission over allocation, efficiency and effort of water resources on catchment area / Hydrological system management / Compiling data and information of water resources / Facilitating the activities of resources management coordination on catchment area / People efficiency in water resources management / Implementating the administration of Balai WS (Permen PU No.13/PRT/M/2006, Chapter 1, Article 3)
<p>c) Budget (Balance of revenue, breakdown: management, construction cost, etc.) in 2004, 2005 and 2006.</p>	<p>(Table to be attached) See Fig. P1-5</p>	<p>(Table to be attached) See Table SO-2 ~ Table SO-3</p>	<p>See Table BP-2</p>
<p>d) Organization/ number of personnel (educational history, year of experience, age, etc.)</p>	<p>(Table and figure to be attached) See Fig. P1-6 ~ P1-7, Table P1-1 ~ P1-2</p>	<p>(Table and figure to be attached)</p> <p>See attached Figure SO-1 (Organization chart) and table (distribution of age, rank in RBO staffs).</p>	<p>See Figure BP-1</p>

Table Comparison of Answer from RBOs and PJT I & II

Question	BBWS Pemali-Juana (Annual implementation plan for requesting budget for 2007/01) See Fig. P1-8 ~ P120 and Table P1-1 ~ P1-2	BBWS Serayu-Opak (Annual implementation plan for requesting budget for 2007/01) Before year 2007, SABO works and irrigation works and jetty construction near river mouth were done. Part of jetty construction, irrigation utilizing underground river are on-going.	BWS Bali-Penida
e) Practical ability (actual record of performances, plan of project implementation / requesting items at the time of implementation plan)			See Table BP-3
f) Deemed subject of the system in the course of the project implementation / requesting items at the time of implementation of project	<p>1) As for number of staff : Number of staffs is not enough. More than 60% of staffs is over 50 years old. Generation gap between young and old one is more than 25 years.</p> <p>2) As for coordination between Balai Besar and Dinas SDA Bain-wide flood scheme in Juana area is not well done.</p>	<p>-Lack of O & M budget. Now trying to apply BLU scheme for improving revenue to get tariff from ,for example, water supply, water use of hydro-electric power and others.</p>	
g) What kind of training is given as the capacity building? Please raise the past record of training in recent 3 years in the category as shown in the right column.	<p>(1) As the internal training in PU Many training were done so far, a list of training received will be prepared. Fig. P1-21 shows example of the training course received. (See Table P1-3)</p>	<p>(1) As the internal training in PU -"Education and Training Region III of Ministry of PU, Water Supply, Roads and Infrastructure"</p>	<p>(1) internal training:</p>
	<p>(2) As the external training outside of PU A finance management course</p>	<p>(2) As the external training outside of PU -Flood Control / Water harvest in Diponegoro University and Gajamada University as 5 days training course.</p>	<p>(2) external training:</p>

Table Comparison of Answer from RBOs and PJT I & II

Question	BBWS Pemali-Juana (If you have, which DG you receive in DGWR and DGRD?) We have counseling with DGRD. (Write here concrete example(s)) Joint activity with Puslitbang on the diversion structure of Pucunggading wier. With Diponegoro University on WL Recorder and Telemetering system.	BBWS Srayu-Opak (If you have, which DG you receive in DGWR and DGRD?) - From Balai Bundungan of DGWR. (Write here concrete example(s)) - For large dam construction, received counseling	BWS Bali-Penida Obtained from Directorate General of Water Resources
h) In the course of water resources management, what kind of counseling do you receive? Please raise concrete example such as water pollution problem or others.			Real sample as problem of pollution on water quality at Badung River, Mati River, Ayung River, Beratan Lake, Buyan Lake, Tambingan Lake and Batur Lake (as attached)
j) When the training is not well done, what kind of affect is derived in your organization? If you have some affect, how did you tackle the situation?	Formal education such as studying abroad for Dipl., HE in Netherlands, SABO coerve in Japan, etc. is important. But it takes time and costs.	<ul style="list-style-type: none"> • Difficult to answer, because of no indication of success and no follow up done. • To compensate the generation gap of engineers, co-working of experienced engineers and young engineers has been done. But reverse generation gap in the filed of IT, CAD, etc. also happens. 	Many of the project facilities such as wave resorder, calbewaya (flood), AWLR and other are not well functioned / The operational needed then manually operated/fidle
2. Practical guidelines, manuals, etc. 2.1 Do you have practical guideline / manual on the water resources management? Which guidelines are used in your organization in the attached table of guidelines?	(If yes, check the manuals you used in the table of guidelines as attached and describe the process of some standard manual establishment and revising) We have list of guidelines as CD form. Consultants will refer on the necessary situation. ROB has intention to have a library in the future.	(If yes, check the manuals you used in the table of guidelines as attached and describe the process of some standard manual establishment and revising) <ul style="list-style-type: none"> • Numbers in the list of existing Guidelines as 1-10, 13-28, 30-32, and 37-79 are ones we used. 	Yes, some of the guideline/manual regarding of certain purposes are shown on attachment 6 as identified using 'tichk' mark. The number in the list of existing Guidelines are : 2-10, 14-16, 24, 29, 32-33, 35, 42-43, 50, 52, 53, 58-60, 63, 66, and 76.
2.2 Do you have any frame work / master plan for project implementation?	Yes, but still on going.	(Just yes or no) <ul style="list-style-type: none"> • Yes 	yes

Table Comparison of Answer from RBOs and PJI I & II

Question	PJI I	PJI II
1. On organization related to your river basin management		
1-1. What are your roles on the water resources development/management and the preservation of water environment?	<p>PJI I manages water supply allocation, water quality, flood control, river environment and water resources infrastructures for 40 rivers in Brantas River basin and 25 rivers in Bengawan Solo River basin, constituting the majority of significant water resources in the basins.</p>	<p>Government Regulation No. 94 of 1999 concerning : Establishment of PJI II (PP No. 94 Tahun 1999) / Law of The Republic of Indonesia no. 7 of 2004 concerning : Water Resources / (UU No. 7 Tahun 2004 tentang Sumber Daya Air) / Government Regulation No. 82 of 2001 Concerning : Water Quality Management and Pollution Control / (PP no.82 Tahun 2001 Tentang Pengelolaan Kualitas dan Pengendalian Pencemaran Air.</p>
1-2. How is the role demarcation among the related organizations regarding to flood control, water allocation, and conservation of environment, respectively?	<p>See Table PJI I-1</p>	<p>Formally, It is not Provided yet. Informally, it is provided by The Agencies by consensus among The Agencies. In case PJI II and Balai Besar, PJI II handles the operation, maintenance, minor rehabilitations & conservations, and Balai handles the major rehabilitations and new constructions projects (including its Survey, Investigations and Designs)</p>
1-3. Please explain the items below on the water resources development/management and the preservation of water environment in your organization.		
a) Obligation and responsibility	<p>Based on the Ministry of Public Works Regulation No. 56/PRT/1991, Article 6, main tasks (obligation and responsibility) of PJI I include:</p> <ol style="list-style-type: none"> Performing operation and maintenance of water resources infrastructures; Water supply services; Management of the river basin, including water resources conservation, development and utilization; and Rehabilitation of water resources infrastructures. 	<p>To operate water for public utilization and its qualifying water sources which sufficient to fulfill the necessity of all the people. / To manage the river basin and/or its sources including to give information, recommendation, consultation and guidance. / To develop the national economy by participating in the program of national development in water management, water source and electric power.</p>
b) Scope of work	<ol style="list-style-type: none"> Preparation of water allocation and drought allocation plan for Provincial Water Resources Management Committee (Panitia Tata Pengaturan Air – PTPA) approval and bulk water allocation based on the agreed plan and user licenses; Planning and operating the flood control and the flood forecasting and warning system; Undertaking watershed management in cooperation with related agencies; Provision of technical recommendation for water licensing; and Undertaking water quality monitoring, provision of technical recommendations for wastewater discharge and participation in the Clean River Program. <p>Concerning operation and maintenance of water resources infrastructures, tasks of PJI I include development and implementation programs concerning:</p> <ol style="list-style-type: none"> General maintenance and some less expensive rehabilitation of infrastructure; Sediment removal in reservoir and river channel; Monitoring and controlling sand mining activities in rivers; Preparation land use plans (especially in the green belt area of the reservoirs and river corridors); and Providing technical recommendation for licensing of river corridor utilization and its monitoring. 	<ol style="list-style-type: none"> EXPLOITATE AND MAINTAIN water resources infrastructures and hydro-electric power generation. / 2. Water resources and hydro-electric power UTILIZATION / 3. WATERSHED MANAGEMENT, such as: control, develop, and utilize water resources in Citirum River Basin / 4. REHABILITATE water resources infrastructures and hydro-electric power plant as well
c) Budget (Balance of revenue, breakdown: management, construction cost, etc.) in 2004, 2005 and 2006.	<p>See Table PJI-2</p>	<p>See Table PJI I-1</p>
d) Organization/ number of personnel (educational history, year of experience, age, etc.)	<p>See Table PJI -3 ~ Table PJI-5.</p>	<p>See Table PJI-2</p>

Table Comparison of Answer from RBOs and PJT I & II

Question	PJT I	PJT II
<p>e) Practical ability (actual record of performances, plan of activities such as annual implementation plan)</p>	<p>(Annual implementation plan for requesting budget for 2007/01)</p> <p>1. Perform operation and maintenance of the water resources infrastructures.</p> <p>a. Operation</p> <ul style="list-style-type: none"> - Flood control in Brantas River - Using FFWS, PJT I conducts water quantity monitoring in Brantas basin in order to control flood of 50 year period. - Water allocation and distribution <p>Present major water uses in the Brantas River and Bengawan Solo River and its main tributaries are for the various purposes as follows: electricity generation, irrigation (as the largest consumer), brackish water fish ponds (in the coastal belt of the Delta), domestic water supply, industrial water supply and river maintenance flow.</p> <ul style="list-style-type: none"> - Water quality control <p>In 2007, PJT I carries out water quality monitoring in Brantas River basin via 23 on-line water quality-monitoring stations along the river and at 51 sampling points off-line monitoring stations along the river and 56 points at potential industries pollution sources, 11 point at domestic disposal outlets of hospital, hotels and public sanitations.</p> <p>b. Maintenance</p> <p>Maintenance works of the water resources infrastructures will be done by PJT I in 2007 consists of sediment dredging</p> <p>2. Water utilization</p> <p>In 2007, total electricity production in the Brantas basin and Bengawan Solo basin is estimated about 1,020 million kW</p> <p>3. River basin management including water resources conservation, development and utilization</p> <p>In 2007, PJT I carries out some activities related to watershed conservation in Brantas basin e.g. construction of check</p>	<p>Rencana Kerja Anggaran Perusahaan (RKAP) PJT II 2005. (It is an annual plan of PJT II for fiscal year 2005. © Will be Attached and sent by the Courier)</p>
<p>f) Deemed subject of the system in the course of the project implementation / requesting items at the time of implementation of project</p>	<p>None</p>	<p>According to the latest study/technical assistance on the Citarum River Basin named INTEGRATED CITARUM WATER RESOURCES MANAGEMENT PROJECT (ICWRMP), the following deemed projects are: 1) Upgrading of Water Sources for Irrigation (Upper Cipunegara, Cipancuh and Ciharang), 2) Rehabilitation of The West Tarum Canal for Improved Water Resources Utilization, 3) West Tarum "Canal 2" Project for raw water supplied, 4) System Service Improvement and Irrigation Modernization of West Tarum Canal, East Tarum Canal and North Tarum Canal.</p>
<p>g) What kind of training is given as the capacity building? Please raise the past record of training in recent 3 years in the category as shown in the right column.</p>	<p>(1) As the internal training in PU</p> <ul style="list-style-type: none"> - Using of water quality monitoring application (2005) - O&M river planning (2005) - Training for mechanic and operator (2006) - Service and goods procurement (2006) - State Owned Company - Entrepreneurship management (2005-2007) - Negotiation skill in business (2007) - Empowering public relations staff (2007) 	<p>1) As the internal training in PJT II / - The Operation and Maintenance Irrigation Training / - The River Discharge Measurement Training / - The Soil Test and Measurement Training / - The GIS Training / - The Safety Dam Training / etc.</p>
	<p>(2) As the external training outside of PU</p> <ul style="list-style-type: none"> - GIS mapping (2005,2006) - Electricity measurement and calibration (2005) - Liquid waste processing technology (2005) - River rehabilitation (2005) - Water update monitoring (2005) - Electronics and basic measurement (2005) - Sediment management (2005) - Water quality modeling (2006) - Advanced electronics (2006) - Flood forecasting and warning system (2007) - Calibration of flood runoff model (2007) - Hydromechanics and Electric (2007) - Sabo dam (2007) - Sediment transport (2007) - Managing Project risk (2007) - Watershed and river basin management (2007) 	<p>2) As the external training in PJT II / - The Water Quality Management System Training / (K-Water - South Korea) / - The Narbo Twinning Programs on IWRM / (JWA - Japan) / - The Narbo Training Program on IWRM / - etc</p>

Table Comparison of Answer from RBOs and PTT I & II

Question	PTT I	PTT II
<p>b) In the course of water resources management, what kind of counseling do you receive? Please raise concrete example such as water pollution problem or others.</p>	<p>(Write here concrete example(s)) DGWR gives counselling on all matters related to water resources management in the aspects of water resources conservation, water resources utilization management and water resources disaster control. DGRD doesn't give any counseling, but conducts joint research on specific matters related to water resources management. Mitigation of eutrophication problem in Sutami Reservoir. Present serious problem encountered in Sutami Reservoir is contamination of reservoir water by nutrients flowing into reservoir from agricultural, domestic and industrial sources from upstream cities and villages; agriculture lands; paper mills, sugar and tobacco factories along the rivers. The lacks of effective measures in wastewater treatment in the upstream finally decrease the quality of water in the reservoir. This condition leads to potential pollution and eutrophication phenomenon in the reservoir. The Research Institute Water Resources (Pusatbang SDA) under DGRD has conducted joint research on mitigation of eutrophication problem in Sutami Reservoir since 2002.</p>	<p>1. West Tarun Canal Improvement Project, Main Report, Volume 1, Nede Co. & Virama Karya, Government of the Republic of Indonesia Ministry of Public Works Directorate General of Water Resources Development, May 1985 / 2. Pekerjaan Konsultansi untuk pengoperasian dan pemeliharaan pengembangan sistem irigasi Jatiluhur dan latihan pegawai, BCEO& PT. Wiratman & Ass. Agustus 1990 / 3. Hydrological Crash Program Phase II, Technical Note2, Water Quality Part II, Haskoning & Virama Karya, Government of the Republic of Indonesia Ministry of Public Works Directorate General of Water Resources Development, November 1991 / 4. Jabotabek Water Resources Management Study, Final Report Volume 1, IWACO, DHV Consultant, DELFT Hydraulics, TNO, Persero PT. Indah Karya, PT. Karsa Hexagon & PT. Wiratman & Ass, Government of the Republic of Indonesia Ministry of Public Works Director / 5. Jatiluhur Water Resources Management Project, Preparation (WRMP), Feasibility Report, Draft, Nedeco, INDEC, PT. Virama Karya, PT. Gamma Epsilon, Government of the Republic of Indonesia Ministry of Public Works Directorate General of Water Resources De / 6. Project Type Sector Loan In Water Resources Development OECD Loan</p>
<p>j) When the training is not well done, what kind of affect is derived in your organization? If you have some affect, how did you tackle the situation?</p>	<p>No effect.</p>	<p>If some times the substances of the training is not relevant with the recent condition and too general, thus the knowledge will not be applicable, the organization just consider that the training was not efficient and will be adjusted for the incoming training programs.</p>
<p>2. Practical guidelines, manuals, etc. 2.1 Do you have practical guideline / manual on the water resources management? Which guidelines are used in your organization in the attached table of guidelines?</p>	<p>Yes. See enclosed table (Table PTTI-6) (If yes, check the manuals you used in the table of guidelines as attached and describe the process of some standard manual establishment and revising) The general process of manual establishment and revising can be seen in Figure PTTI-1 and Figure PTTI-2.</p>	<p>See Table PTTII-3</p>
<p>2.2 Do you have any frame work / master plan for project implementation?</p>	<p>No</p>	<p>NO</p>

Sheeted - e

Financial & Physic Progress Recapitulation

BB.WS. BRANTAS
胡定才 李坤

Table BR-1 REKAPITULASI PROGRES FISIK DAN KEUANGAN
(e-MONITORING PER 28 Agustus 2007)

NO	UNIT	PAGU Anggaran Realizing	KEUANGAN		FISIK	
			PENYERAPAN (Rp) Attendance	Financing %	% percent	% percent
1	TATA LAKSANA procedure	13.097.536.000,00	4.851.800.074,00	37,04	25,75	
2	PERENCANAAN DAN PROGRAM planning programming	9.096.673.000,00	1.542.143.570,00	16,95	0	
3	PBPS I	29.610.535.000,00	13.822.740.454,00	46,68	74,86	
4	PBPS II	111.869.604.000,00	49.249.286.351,00	44,02	72,14	
5	PBPS III	103.093.572.000,00	56.967.283.890,00	55,26	69,37	
6	PL KELUD	38.645.609.000,00	23.765.435.575,00	61,50	61	
7	PL SEMERU	13.701.015.000,00	11.625.494.356,00	84,85	98,8	
8	BAJUL MATI (?)	11.256.007.000,00	4.058.398.842,00	36,06	60,5	
9	PKSDA	37.206.274.000,00	5.759.193.518,00	15,48	47,88	
10	PEKSAM	98.954.312.000,00	49.557.228.670,00	50,08	57,97	
11	PAB	22.837.934.000,00	10.219.278.643,00	44,75	60,37	
12	IRIGASI irrigation	8.809.792.000,00	3.111.556.425,00	35,32	93,48	
13	PAT ?	9.754.325.000,00	8.876.407.893,00	91,00	96,16	
14	ALAT Equipment	2.514.608.000,00	1.748.751.491,00	69,54	100,00	
15	OP ?	15.071.528.000,00	2.031.334.073,00	13,48	58,96	
	JUMLAH	525.519.324.000,00	247.186.333.825,00			
	BALAI (GAB e-MONITORING)	525.519.324.000,00	247.186.333.825,00	47,04	65,85	

Table CI-1 Budget of BBWS Citarum

No	Division	Current	
		In Million Rp.	%
1.	Administration	5,593	2.25
2.	Program and planning	23,738	9.56
3.	Conservation	15,658	6.31
4.	Flood control	124,324	50.08
5.	Irrigation network 1	22,459	9.05
6.	Irrigation network 11	4,081	1.64
7.	Groundwater network	8,953	3.61
8.	Raw water supply	32,944	13.27
9.	Operation & Maintenance	10,498	4.23
	Total	248,248	100,00

Table CI-2 Educational History of Staffs in BBWS Citarum

NO	EDUCATIONAL HISTORY	YEAR OF EXPERIMEN	AGE	TOTAL
I.	<u>Pasca Scholar</u>			<u>22</u>
1.	Technical	10 ~ 25	35 ~ 54	21
2.	Non Technical	20	50	1
II.	<u>Scholar</u>			<u>56</u>
1.	Technical	15 ~ 26	40 ~ 55	34
2.	Non Technical	15 ~ 26	40 ~ 55	22
III.	<u>Bachelor</u>			<u>30</u>
1.	Technical	20 ~ 26	45 ~ 55	24
2.	Non Technical	20 ~ 26	45 ~ 55	6
IV.	<u>Senior High School</u>			<u>109</u>
1.	Technical		30 ~ 55	63
2.	Non Technical		30 ~ 55	46
V.	<u>Junior High School</u>			<u>53</u>
VI.	<u>Elementary</u>			<u>68</u>

Table CI-3 Annual implementation plan for requesting budget for 2007/01
Of BBWS Citarum

NO.	DIVISIONS	Current	
		In Million Rp.	%
1.	Administration	5,401	3.09
2.	Program & Planning	23,525	13.46
3.	Conservation	15,615	8.93
4.	Flood Control	50,823	29.09
5.	Irrigation Network I	22,464	12.85
6.	Irrigation Network II	4,105	2.35
7.	Groundwater Network	8,978	5.14
8.	Raw Water Supply	32,945	18.86
9.	Operation and Maintenance	10,907	6.24
	Total	174,765	100.00

Table CI-5 LIST OF EXISTING GUIDELINES

1. Data entry and data management
2. Measurement & analysis of rainfall and climate data
3. Frequency Analysis for hydrological data
4. O&M of Hydrology station
5. Calibration and Maintenance of hydrological equipments
6. Flows Measurement
7. Management of River flows data
8. Survey and Analysis of hydrology for river
9. Collection and Monitoring Hydrological data
10. Work Instructions of II-V Curve
11. General Procedure of Calibration
12. Procedure Hydrology Collecting and Monitoring
13. Work Instruction of measurement of river velocity & discharge
14. Work Instructions of H-Q Curve Preparation
15. River flow measurements
16. Water Requirement
17. Basic Concept of Water Allocation
18. Water allocation management
19. Preparation. of Model of Water Allocation
20. Preparation for Reservoir operation & Water Allocation
21. Technical Recommendation for Water Use
22. Preparing Reservoir Operation & Water Allocation pattern
23. Daily Water Allocation planning, implementation and controlling
24. Procedure of Reservoir Daily Operation
25. Water Volume Measurement Device Monitoring
26. Operation of WR Infrastructure
27. Basic Water Quality Management
28. Method of sampling water & Its management
29. Water Quality parameters
30. Monitoring of Water Quality Analysis
31. Analysis of Water Quality
32. Water Quality Monitoring & Action for Pollution
33. Technical Recommendation on Waste Water Discharge
34. Water Quality Inspection
35. Program of River Maintenance
36. River Maintenance Planning
37. Inventory of river data and river infrastructures

38. Engineering of River Environments
39. River Morphology
40. O&M of River & River Infrastructures
41. O&M of River & River Infrastructures Cost
42. Survey and Analysis of hydraulic for river
43. Geological Survey
44. Survey and Analysis for Soil Mechanic
45. Analysis of river structures
46. Survey and Analysis of Dam Monitoring
47. Planning & Implementation of Maintenance of WR Infrastructures
48. Survey, Monitoring & Evaluation of Dam safety Analysis
49. Recommendation of River Corridor
50. Monitoring of the Dam instrumentation
51. SOP of Flood Control
52. Flood Early-warning System
53. Planning for Flood Control
54. Identification for Flood Routing
55. Flood control for Sutami-Lahor Dam
56. Preparing Flood Alert Manual
57. General Procedure or Food Control
58. Job Description of Provincial RBO
59. Guideline of WR Institution for Provincial RBO
60. Provincial & Basin WR Coordination Body
61. Terrestrial Mapping for River
62. Preparation of Corporate Work Plan and Operational

Table PJ-1 REKAP PEGAWAI
BALAI BESAR WILAYAH SUNGAI PEMALI JUANA
BERDASARKAN GOLONGAN

File Admin
Soney water ref wash
Utusan Jawa
o R.M

GOLONGAN	BID. TATA USAHA		BID. PROGRAM		BID. PJSA		BID. PJRA		BID OP	
	PNS	NPNS	PNS	NPNS	PNS	NPNS	PNS	NPNS	PNS	NPNS
1	2		3		4		5		6	
IV/b	1									
IV/a	1		1		4		2		2	
III/d	4		2		3		4		2	
III/c	3		4		6		9		3	
III/b	6	1	3		20		19		11	
III/a	4	1	1		9	2	28	1	3	2
II/d	4				5		8		2	
II/c	1				1		1	1	1	
II/b	6	12		3	1	20	2	14		18
II/a	5				7	3	4	5	6	1
I/d					1		5			
I/c	5	14			1	9		7	1	5
I/b		7			3	5		5		9
I/a	2				2	2	1	5	1	4
JUMLAH	42	35	11	3	63	41	83	38	32	39
I. JUMLAH PNS	231									
II. JUMLAH NPNS	156									
JUMLAH TOTAL I + II	387									

total
1
10
15
25
60
51
19
5
76
31
6
42
29
17
387

Table PJ-2 **REKAP PEGAWAI**
BALAI BESAR WILAYAH SUNGAI PEMALI JUANA
BERDASARKAN PENDIDIKAN

PENDIDIKAN	BID. TATA USAHA		BID. PROGRAM		BID. PJSA		BID. PJPA		BID OP	
	PNS	NPNS	PNS	NPNS	PNS	NPNS	PNS	NPNS	PNS	NPNS
1	2		3		4		5		6	
S3	1		-		-		-		-	
S2	3		3		8		7		4	
S1	11		3		6		11		5	
D.IV	-		-		4		2		-	
D.III	2		3		12		11		6	
STM	6		1		14		27		6	
SMA	3		-		7		7		5	
SMEA	2		1		2		10		1	
SMP / ST	10		-		3		2		4	
SD / SR	4		-		7		6		1	
JUMLAH	42		11		63		83		32	
JUMLAH TOTAL	231									231

D
M
B
D
3
H
J
F

Table PJ-3 A LIST OF TRAINING 2007

NO	DATE	TYPE OF TRAINING	INTERNAL TRAINING		EXTERNAL TRAINING OUTSIDE OF PU
			RBMU	In PU	
1	Feb-05-2007	Training of Quality Assurance	√		
2	Feb-21-2007	Sort Course of Region III in Yogyakarta		√	
3	Mar-15-2007	Eselon IV Functionary Staff Training		√	
4	Mar-28-2007	Training and National Test of Procurement	√		
5	Apr-05-2007	Sort Course of Functionary of Faction I and II		√	
6	Apr-13-2007	Training of UU No. 7 th 2004	√		
7	Apr-25-2007	Sort Course of National Adiministration Institute		√	
8	Mei-03-2007	Training of SABMIN		√	
9	Mei-07-2007	Training of Retirement Staff		√	
10	Mei-14-2007	Training of Water Resource Information System		√	
11	Mei-14-2007	Training of Operation and Maintenance		√	
12	Mei-28-2007	Training of Human Resource Development for Archives Division		√	
13	Mei-29-2007	PIM Sort Course for Structural Functionary		√	
14	Mei-05-2007	Workshop of Strategic Plan		√	
15	Jun-05-2007	Technical Training of Personality Data Base		√	
16	Jun-06-2007	Training of Technical Planning Dam		√	
17	Jun-07-2007	Functional Sort Course for First Lifting		√	
18	Jun-11-2007	Training of Geological Technique and Soil Mechanics		√	
19	Jun-21-2007	Training of Using Echo Sounding Device		√	
20	Jun-21-2007	Administration Training for Candidate of Finance Staff and Training of Accounting System			√
21	Jun-26-2007	Training of Electronic Procurement Technique		√	
22	Jun-28-2007	Training of Construction Management in West Part		√	
23	Jun-28-2007	Training of obligation and responsibility of RBMU	√		
24	Jul-17-2007	Training of Law Aspect			√
25	Jul-19-2007	Training of Regular DIM III		√	
26	Jul-23-2007	Training for Administration and finance staff		√	√
27	Jul-26-2007	Training for staff faction I and II		√	
28	Jul-26-2007	Training of installation and maintenance technique for pipe		√	
29	Jul-26-2007	Training of Hidrological Operation		√	
30	Jul-30-2007	Training of Technological Information Technique		√	
31	Jul-30-2007	Training of Documentation Information in PU Division		√	
32	2007	Training of Water User Association	√	√	
33	2007	Training of Coordination Water Resources Management	√	√	

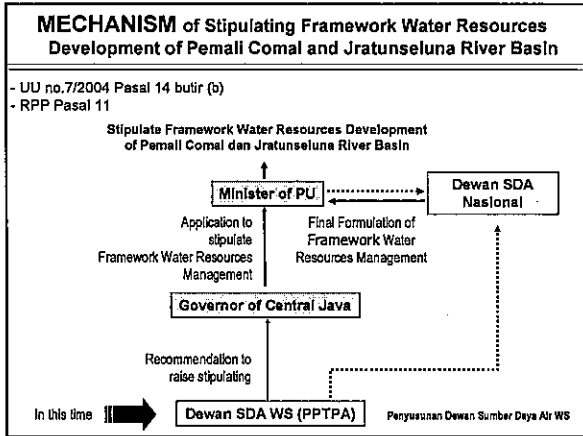


Fig. PJ-1

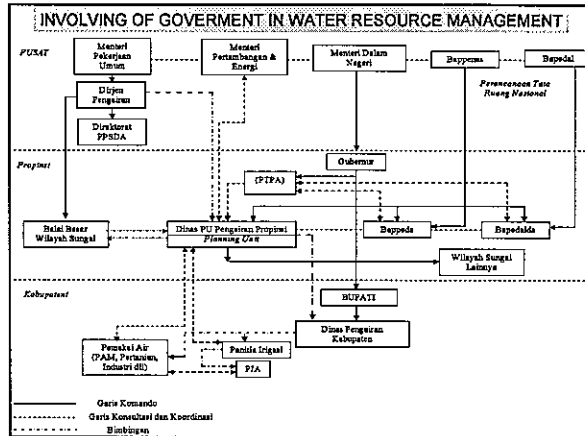


Fig. PJ-2

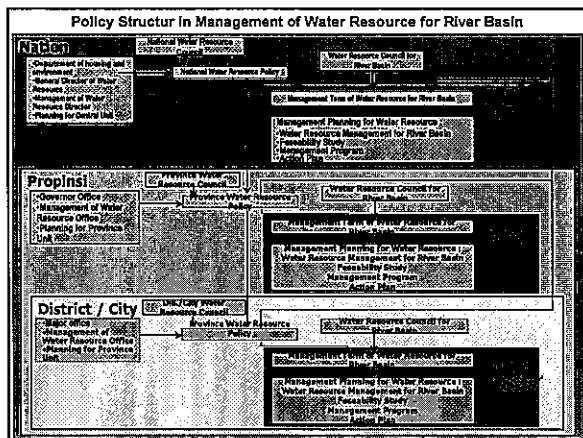


Fig. PJ-3

Sectoral crossing conection

	Farming Improvement	Environment Conservation	Spatial Management Improvement	Irigation Improvement	Water Improvement	City Development	Flood Control	Water Resource Conservation	Economical Development
Farming Improvement									
Environment Conservation	X								
Spatial Management Improvement	X	X							
Irigation Improvement	X	X	X						
Water Improvement			X	X					
City Development			X	X		X			
Flood Control			X	X			X		
Water Resource Conservation	X	X	X	X			X	X	
Economical Development		X	X	X	X	X	X	X	X

Fig. PJ-4

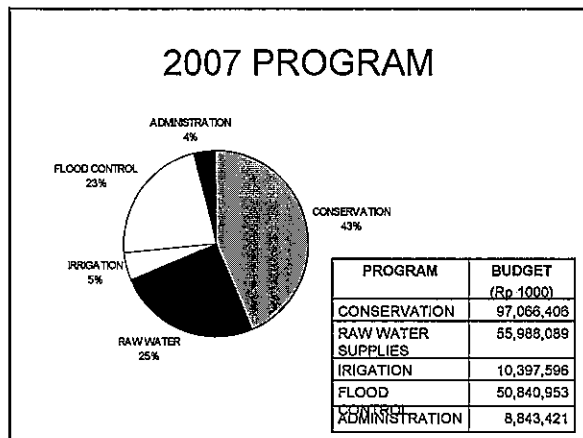


Fig. PJ-5

Total 223.135 miliar Rp.

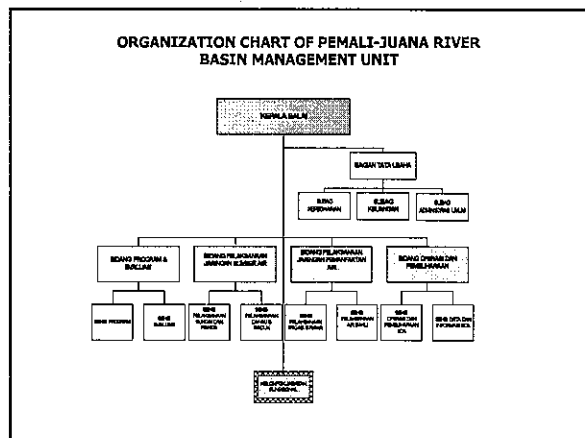


Fig. PJ-6

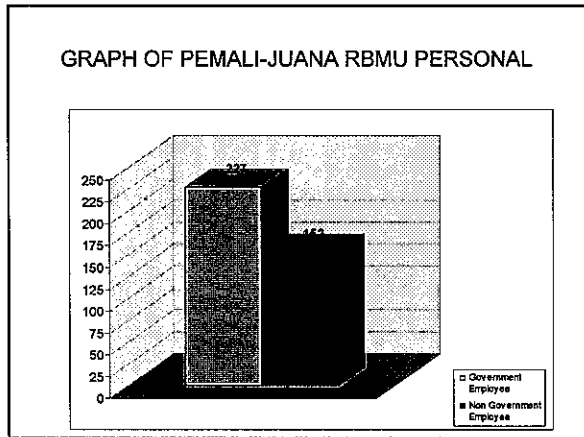


Fig. PJ-7

2007 PROGRAM

CONSERVATION OF WATER RESOURCES

- Development of Dam (1 location)
- Arboretum (2 location)
- Rehabilitation of Small Dam (3 location)
- Rehabilitation of Dam (3 location)
- Repair of Small Dam (8 location)

Fig. PJ-8

2007 PROGRAM

COASTAL REVETMENT

- Sarang Coastal Revetment
- Slamaran Coastal Revetment

Fig. PJ-9

2007 PROGRAM

Operation/Management of Floods & Repair of River

No	Program	Amount
1.	Development of Floodway	1
2.	Relocation	1
3.	Work of Dike and Parapet	1
4.	Work of Bank Protector	3
5.	Work of Bank Protector and Parapet	2
6.	Repair of Path and Dike	1
7.	Repair of Path, Dike and Bank Protector	1
8.	Repair of Dike and Bank Protector	1

Fig. PJ-10

2007 PROGRAM

IRRIGATION

- Rehabilitation of Cacaban Irrigation System
- Rehabilitation of Left Klambu Irrigation System

Fig. PJ-11

2007 PROGRAM

DEVELOPMENT OF RAW WATER

NO	PROGRAM	AMOUNT
1.	Improvement of Raw Water System	1
2.	Function	1
3.	Repair of Operating System	1
4.	Development of Transmission Pipe	5
5.	Development of Water Reservoir Deep Well	1

Fig. PJ-12

2007 PROGRAM

UTILIZATION OF GROUND WATER

- Drilling of Well
- Rehabilitation of Ground Water Irrigation System






Fig. PJ-13

2007 PROGRAM

OPERATION & MAINTENANCE OF WATER RESOURCES

- Rehabilitation of Irrigation System (8 Location)




Fig. PJ-14

2007 PROGRAM



PROGRAM IN SUPPORTING CENTRAL JAVA PROVINCE

RELOCATION OF SILANDAK RIVER

No	Description	T.A	Length (m)	Cost Rp (x1000)
1	Phase I - Reshape of River - Making of Floods Dike	2004	2,500 2,500	4,000,000
2	Phase II (APBN) - Galian Alur - Making of Floods Dike	2005	1,528 521	6,449,049
3	Phase III (APBN) - Making of Floods Dike	2006	130	2,510,510
4	Phase IV (APBN) - Making of Floods Dike	2006	484	3,567,840
5	Phase V (APBN) - Making of Floods Dike	2007	393	4,067,900
Total			4,028	20,595,299

Fig. PJ-15

PHOTO OF THE RELOCATION OF SILANDAK RIVER





Fig. PJ-16

PROGRAM IN SUPPORTING UNDERDEVELOPED AREA OF REMBANG DISTRICT

- Lodan Dam
- Banyukuwung Small Dam
- Grawan Small Dam
- Panohan Small Dam (under construction)






Fig. PJ-17

PROGRAM IN ORDER TO 500 THOUSAND RICE PRODUCTION OF CENTRAL JAVA PROVINCE

- Rehabilitate Cacaban Irrigation Area in District of Tegal : 1.545 Ha
- Rehabilitate Klambu Irrigation Area in District of Grobogan, Demak, Kudus, Pati and Jepara
- And the rest handled by Province, District and Town

Fig. PJ-18

CONSTRUCTION OF JATIBARANG DAM IN KREO RIVER

- Land Availability is 223,58 ha.
- Access road construction from West direction (22 x 509 m) and East (22 x 754 m).
- Construction of Diversion Tunnel which length is 441 meters.
- Construction of Dam which its height is 77 meters and its length is 200 meters.
- Construction of Intake tunnel which its length is 392 meters.
- Construction of electric power which its product is 1,5 MW.
- Construction of Supporting building, bridge, etc.
- Construction of Dam Management Buildings.
- Removing of several transmission towers.

Fig. PJ-19

Jatibarang Dam Specification

Type of Dam	: Rockfill Dam
• Height	: 77 m
• Length of Crest Dam	: 200 m
• Spillway Discharge Capacity m ³ /dt (PMF)	: 1.600
• Total reservoir capacity	: 20.400.000 m ³
- Flood Control Capacity	: 2.700.000 m ³
- Water Supply Capacity	: 10.900.000 m ³
- Sediment Capacity	: 6.800.000 m ³
• Electric Power	: 1,5 MW

Fig. PJ-20

KIND OF TRAINING

- TRAINING OF WATER USER ASSOCIATIONS
- TRAINING OF COORDINATION OF WATER MANAGEMENT

IF THE TRAINING IS NOT WELL DONE, THE EFFECT IS :

- FAILURE OF IRRIGATION MANAGEMENT
- LACK OF COORDINATION AMONG GOVERNMENT AND STAKEHOLDER

Fig. PJ-21



PRESIDEN
REPUBLIK INDONESIA

Table 30-1

- 26 -

C. PEMBAGIAN URUSAN PEMERINTAHAN BIDANG PEKERJAAN UMUM

SUBBIDANG	SUB/SUB BIDANG	PEMERINTAH	PEMERINTAHAN DAERAH PROVINSI	PEMERINTAHAN DAERAH KABUPATEN/KOTA
1. Sumber Daya Air	1. Pengaturan	1. Penetapan kebijakan nasional sumber daya air. 2. Penetapan pola pengelolaan sumber daya air pada wilayah sungai lintas provinsi, wilayah sungai lintas negara, dan wilayah sungai strategis nasional. 3. Penetapan rencana pengelolaan sumber daya air pada wilayah sungai lintas provinsi, wilayah sungai lintas negara, dan wilayah sungai strategis nasional. 4. Penetapan dan pengelolaan kawasan lindung sumber air pada wilayah sungai lintas provinsi, wilayah sungai lintas negara, dan wilayah sungai strategis nasional.	1. Penetapan kebijakan pengelolaan sumber daya air provinsi. 2. Penetapan pola pengelolaan sumber daya air pada wilayah sungai lintas kabupaten/kota. <i>hanya → tidak ada</i> 3. Penetapan rencana pengelolaan sumber daya air pada wilayah sungai kabupaten/kota. <i>hanya → tidak ada</i> 4. Penetapan dan pengelolaan kawasan lindung sumber air pada wilayah sungai lintas kabupaten/kota.	1. Penetapan kebijakan pengelolaan sumber daya air kabupaten/kota. 2. Penetapan pola pengelolaan sumber daya air pada wilayah sungai dalam satu kabupaten/kota. 3. Penetapan rencana pengelolaan sumber daya air pada wilayah sungai dalam satu kabupaten/kota. 4. Penetapan dan pengelolaan kawasan lindung sumber air pada wilayah sungai dalam satu kabupaten/kota.

RDO Serayu-Opak

Mr. Bambang Hargono
9/18
RZR W32

PDF 23

"PEMBAGIAN URUSAN PJ"

No 48 / 2006 - 7



PRESIDEN
REPUBLIK INDONESIA

- 27 -

SUB BIDANG	SUB SUB BIDANG	PEMERINTAH	PEMERINTAHAN DAERAH PROVINSI	PEMERINTAHAN DAERAH KABUPATEN/KOTA
		5. Pembentukan Dewan Sumber Daya Air Nasional, wadah koordinasi sumber daya air wilayah sungai lintas provinsi, dan wadah koordinasi sumber daya air wilayah sungai strategis nasional.	5. Pembentukan wadah koordinasi sumber daya air di tingkat provinsi dan/atau pada wilayah sungai lintas kabupaten/kota.	5. Pembentukan wadah koordinasi sumber daya air di tingkat kabupaten/kota dan/atau pada wilayah sungai dalam satu kabupaten/kota.
		6. Penetapan norma, standar, prosedur, dan kriteria (NSPK) pengelolaan sumber daya air.	6. —	6. —
		7. Penetapan wilayah sungai dalam satu kabupaten/kota, wilayah sungai lintas kabupaten/kota, wilayah sungai lintas provinsi, wilayah lintas negara, dan wilayah sungai strategis nasional.	7. —	7. —



PRESIDEN
REPUBLIK INDONESIA

SUB BIDANG	SUB SUB BIDANG	PEMERINTAH	PEMERINTAHAN DAERAH PROVINSI	PEMERINTAHAN DAERAH KABUPATEN/KOTA
		<p>8. Penetapan status daerah irigasi yang sudah dibangun yang menjadi wewenang dan tanggung jawab Pemerintah, pemerintah provinsi, dan pemerintah kabupaten/kota.</p> <p>9. Pengesahan pembentukan komisi irigasi antar provinsi</p>	<p>8. —</p> <p>9. Pembentukan komisi irigasi ✓ provinsi dan pengesahan pembentukan komisi irigasi antar kabupaten/kota.</p>	<p>8. —</p> <p>9. Pembentukan komisi irigasi kabupaten/kota</p>
	<p>2. Pembinaan</p>	<p>1. Penetapan dan pemberian izin atas penyediaan, peruntukan, penggunaan, dan pengusahaan sumber daya air pada wilayah sungai lintas provinsi, wilayah sungai lintas negara, dan wilayah sungai strategis nasional.</p>	<p>1. Penetapan dan pemberian izin atas penyediaan, peruntukan, penggunaan, dan pengusahaan sumber daya air pada wilayah lintas kabupaten/kota.</p>	<p>1. Penetapan dan pemberian izin atas penyediaan, peruntukan, penggunaan, dan pengusahaan sumber daya air pada wilayah sungai dalam satu kabupaten/kota.</p>



PRESIDEN
REPUBLIK INDONESIA

- 29 -

SUB BIDANG	SUB SUB BIDANG	PEMERINTAH	PEMERINTAHAN DAERAH PROVINSI	PEMERINTAHAN DAERAH KABUPATEN/KOTA
		<p>2. Penetapan dan pemberian rekomendasi teknis atas penyediaan, peruntukan, penggunaan, dan pengusahaan air tanah pada cekungan air tanah lintas provinsi dan cekungan air tanah lintas negara.</p> <p>3. Menjaga efektivitas, efisiensi, kualitas, dan ketertiban pelaksanaan pengelolaan sumber daya air pada wilayah sungai lintas provinsi, wilayah sungai lintas negara, dan wilayah sungai strategis nasional.</p> <p>4. Pemberian bantuan teknis dalam pengelolaan sumber daya air kepada provinsi dan kabupaten/kota.</p>	<p>2. Penetapan dan pemberian rekomendasi teknis atas penyediaan, pengambilan, peruntukan, penggunaan dan pengusahaan air tanah pada cekungan air tanah lintas kabupaten/kota.</p> <p><i>Pembangunan</i> ✓</p> <p>3. Menjaga efektivitas, efisiensi, kualitas, dan ketertiban pelaksanaan pengelolaan sumber daya air pada wilayah sungai lintas kabupaten/kota.</p> <p>4. Pemberian bantuan teknis dalam pengelolaan sumber daya air kepada kabupaten/kota.</p>	<p>2. Penetapan dan pemberian izin penyediaan, peruntukan, penggunaan, dan pengusahaan air tanah.</p> <p>3. Menjaga efektivitas, efisiensi, kualitas, dan ketertiban pelaksanaan pengelolaan sumber daya air pada wilayah sungai dalam satu kabupaten/kota.</p> <p>4. —</p>

REPUBLIK INDONESIA
PRESIDEN



- 30 -

SUB BUDANG	SUB SUB BUDANG	PEMERINTAH	PEMERINTAHAN DAERAH PROVINSI	PEMERINTAHAN DAERAH KABUPATEN/KOTA
		<p>5. Fasilitas penyelesaian sengketa antar provinsi dalam pengelolaan sumber daya air.</p> <p>6. Pemberian izin pembangunan, pemanfaatan, dan/atau pembongkaran bangunan dan/atau saluran irigasi pada jaringan irigasi primer dan sekunder dalam daerah irigasi lintas provinsi, daerah irigasi lintas negara, dan daerah irigasi strategis nasional.</p> <p>7. Pemberdayaan para pemilik kepentingan dalam pengelolaan sumber daya air tingkat pusat, provinsi, dan kabupaten/kota.</p>	<p>5. Fasilitas penyelesaian sengketa antar kabupaten/kota dalam pengelolaan sumber daya air.</p> <p>6. Pemberian izin pembangunan, pemanfaatan, dan/atau pembongkaran bangunan dan/atau saluran irigasi pada jaringan irigasi primer dan sekunder dalam daerah irigasi lintas kabupaten/kota.</p> <p>7. Pemberdayaan para pemilik kepentingan dalam pengelolaan sumber daya air tingkat provinsi dan kabupaten/kota.</p>	<p>5. —</p> <p>6. Pemberian izin pembangunan, pemanfaatan, dan/atau pembongkaran bangunan dan/atau saluran irigasi pada jaringan irigasi primer dan sekunder dalam daerah irigasi yang berada dalam satu kabupaten/kota.</p> <p>7. Pemberdayaan para pemilik kepentingan dalam pengelolaan sumber daya air tingkat kabupaten/kota.</p>



PRESIDEN
REPUBLIK INDONESIA

- 31 -

SUB BIDANG	SUB SUB BIDANG	PEMERINTAH	PEMERINTAHAN DAERAH PROVINSI	PEMERINTAHAN DAERAH KABUPATEN/KOTA
		<p>8. Pemberdayaan kelembagaan sumber daya air tingkat pusat, provinsi dan kabupaten/kota.</p>	<p>8. Pemberdayaan kelembagaan sumber daya air tingkat provinsi dan kabupaten/kota.</p>	<p>8. Pemberdayaan kelembagaan sumber daya air tingkat kabupaten/kota.</p>
<p>3. Pembangunan/ Pengelolaan</p>		<p>1. Konservasi sumber daya air pada wilayah sungai lintas provinsi, wilayah sungai lintas negara, dan wilayah sungai strategis nasional.</p> <p>2. Pendayagunaan sumber daya air pada wilayah sungai lintas provinsi, wilayah sungai lintas negara, dan wilayah sungai strategis nasional.</p> <p>3. Pengendalian daya rusak air yang berdampak skala nasional.</p> <p>4. Penyelenggaraan sistem informasi sumber daya air tingkat nasional.</p>	<p>1. Konservasi sumber daya air pada wilayah sungai lintas kabupaten/kota.</p> <p>2. Pendayagunaan sumber daya air pada wilayah sungai lintas kabupaten/kota.</p> <p>3. Pengendalian daya rusak air yang berdampak skala provinsi.</p> <p>4. Penyelenggaraan sistem informasi sumber daya air tingkat provinsi.</p>	<p>1. Konservasi sumber daya air pada wilayah sungai dalam satu kabupaten/kota.</p> <p>2. Pendayagunaan sumber daya air pada wilayah sungai dalam satu kabupaten/kota.</p> <p>3. Pengendalian daya rusak air yang berdampak skala kabupaten/kota.</p> <p>4. Penyelenggaraan sistem informasi sumber daya air tingkat kabupaten/kota.</p>



PRESIDEN
REPUBLIK INDONESIA

- 32 -

SUB-BIDANG	SUB SUB-BIDANG	PEMERINTAH	PEMERINTAHAN DAERAH PROVINSI	PEMERINTAHAN DAERAH KABUPATEN/KOTA
		<p>5. Pembangunan dan peningkatan sistem irigasi primer dan sekunder pada daerah irigasi lintas provinsi, daerah irigasi lintas negara, dan daerah irigasi strategis nasional.</p> <p>6. Operasi, pemeliharaan dan rehabilitasi sistem irigasi primer dan sekunder pada daerah irigasi yang luasnya lebih dari 3.000 ha atau pada daerah irigasi lintas provinsi, daerah irigasi lintas negara, dan daerah irigasi strategis nasional.</p> <p>7. Operasi, pemeliharaan dan rehabilitasi pada sungai, danau, waduk dan pantai pada wilayah sungai lintas provinsi, wilayah sungai lintas negara dan wilayah sungai strategis nasional.</p>	<p>5. Pembangunan dan peningkatan sistem irigasi primer dan sekunder pada daerah irigasi lintas kabupaten/kota.</p> <p>6. Operasi, pemeliharaan dan rehabilitasi sistem irigasi primer dan sekunder pada daerah irigasi yang luasnya 1.000 ha sampai dengan 3.000 ha atau pada daerah irigasi yang bersifat lintas kabupaten/kota.</p> <p>7. Operasi, pemeliharaan dan rehabilitasi pada sungai, danau, waduk dan pantai pada wilayah sungai lintas kabupaten/kota.</p>	<p>5. Pembangunan dan peningkatan sistem irigasi primer dan sekunder pada daerah irigasi dalam satu kabupaten/kota.</p> <p>6. Operasi, pemeliharaan dan rehabilitasi sistem irigasi primer dan sekunder pada daerah irigasi dalam satu kabupaten/kota yang luasnya kurang dari 1.000 ha.</p> <p>7. Operasi, pemeliharaan dan rehabilitasi pada sungai, danau, waduk dan pantai pada wilayah sungai dalam satu kabupaten/kota.</p>



PRESIDEN
REPUBLIK INDONESIA

- 33 -

SUB BIDANG	SUB SUB BIDANG	PEMERINTAH	PEMERINTAHAN DAERAH PROVINSI	PEMERINTAHAN DAERAH KABUPATEN/KOTA
	4. Pengawasan dan Pengendalian	1. Pengawasan pengelolaan sumber daya air pada wilayah sungai lintas provinsi, wilayah sungai lintas negara, dan wilayah sungai strategis nasional.	1. Pengawasan pengelolaan sumber daya air pada wilayah sungai lintas kabupaten/kota.	1. Pengawasan pengelolaan sumber daya air pada wilayah sungai dalam kabupaten/kota.
2. Bina Marga	1. Pengaturan	1. Pengaturan jalan secara umum: a. Pembentukan peraturan perundang-undangan sesuai dengan kewenangannya. b. Perumusan kebijakan perencanaan. c. Pengendalian penyelenggaraan jalan secara makro.	1. — a. — b. — c. —	1. — a. — b. — c. —

**TABULASI RKA - KL 2007
BALAI BESAR WILAYAH SUNGAI SERAYU OPAK**

Table SO-2

Kode	KEGIATAN	Nilai Pagu pada Pejabat Pembuat Komitmen (PKK)										
		Ketataaksanaan BBWS Serayu Opak	Perencanaan & Program	Pengendalian Banjir & Perbaikan sungai I	Pengendalian Banjir & Perbaikan sungai II	Pengendalian Lahar Gn. Merapi	Pengemb. & Konservasi SDA	Pengamanan Pantai	Air Baku	Irigasi I	Irigasi II	O & P Sumber Daya Air
04.04.01	Program Pengembangan, Pengelolaan, & Konservasi Sungai, Danau dan Sumber Air Lainnya.	1.761.294.000	6.824.889.000	0	0	0	32.175.138.000	0	4.436.702.000	0	0	5.069.430.000
04.04.03	Program Pengembangan dan Pengelolaan Jaringan Irigasi, Rawa dan Jaringan Pengairan	943.373.000	2.487.285.000	0	0	0	0	0	3.355.200.000	41.705.814.000	1.239.665.000	
04.90.19	Program Penyelenggaraan Pimpinan Kenegaraan & Pemerintahan	4.648.860.000	0	0	0	0	0	0	0	0	0	0
05.04.04	Program Pengendalian Banjir & Pengamanan Pantai	4.254.919.000	2.998.588.000	28.382.026.000	4.425.422.000	98.173.596.000	0	28.665.312.000	0	0	0	5.520.861.000
05.90.19	Program Penyelenggaraan Pimpinan Kenegaraan & Pemerintahan	1.692.963.000	0	0	0	0	0	0	0	0	0	0
06.03.01	Program Penyediaan dan Pengelolaan Air Baku	1.122.297.000	650.000.000	0	0	0	0	0	16.177.135.000	0	0	93.960.000
06.90.19	Program Penyelenggaraan Pimpinan Kenegaraan & Pemerintahan	481.639.000	0	0	0	0	0	0	0	0	0	0
SUB TOTAL :		14.895.365.000	12.960.742.000	28.382.026.000	4.425.422.000	98.173.596.000	32.175.138.000	28.665.312.000	20.813.837.000	3.355.200.000	41.705.814.000	11.923.916.000
TOTAL :		297.276.368.000										

Table 50-3 Daftar Tingkat Pendidikan dan Umur Pegawai
Balai Besar Wilayah Sungai Serayu - Opak
Tahun 2007

No	Gol	Pendidikan						Umur				Total
		SD	SLTP	SLTA	D3	S1	S2	20 - 30	31 - 40	41 - 50	51 - 56	
1	IV/d	-	-	-	-	-	-					0
2	IV/c	-	-	-	-	-	1				1	1
3	IV/b	-	-	-	-	-	1				1	1
4	IV/a	-	-	-	-	1	13			2	12	14
5	III/d	-	-	-	-	8	5			6	7	13
6	III/c	-	-	-	27	13	3			5	41	46
7	III/b	-	-	46	4	7	1			9	58	67
8	III/a	-	-	28	7	14	-			5	53	58
9	II/d	-	-	9	2	-	-			2	14	16
10	II/c	1	3	1	-	-	-			6		6
11	II/b	-	3	3	-	-	-			7	1	8
12	II/a	-	2	1	-	-	-		3	25	2	30
13	I/d	11	2	-	-	-	-			13		13
14	I/c	10	-	-	-	-	-			10		10
15	I/b	1	-	-	-	-	-			1		1
16	I/a	14	-	-	-	-	-		2	8	4	14
Total		37	10	88	40	43	24		5	99	194	298

Catatan :

Total tidak sesuai dengan jumlah pendidikan yang ada karena data kurang lengkap

Jumlah PNS = 298

Jumlah PH = 160

Jumlah PHL = 91

Table BP-1

Role Demarcation on Flood Control, Water Allocation and Conservation of Environment

	Flood Control	Water Allocation	Conservation
Public Works Service	<ul style="list-style-type: none"> - Infrastructure planning - Infrastructure recovery - Infrastructure procurement 	Policy Infrastructure procurement	Policy Infrastructure procurement
Balai	<ul style="list-style-type: none"> - Infrastructure planning - Infrastructure recovery - Infrastructure procurement 	Infrastructure procurement	Infrastructure procurement
Satkorlak	Victim evacuation		
BP-SDA	Preservation on catchment area		Identification, planning, action, monitoring on forestry programme
PDAM		Operator	
Subak		Operator	

Table BP-2 DIP. TA. 2004, 2005, 2006
APBN PROP. BALI

(Dalam Ribuan Rupiah)

No.	URAIAN DIP.	TAHUN ANGGARAN			KET.
		2004	2005	2006	
1	2	3	4	5	6
1	IRIGASI BALI				
	Administrasi Proyek	1.147.602,00	1.251.010,00	1.566.080,00	
	Konstruksi RM	35.836.412,00	37.161.560,00	37.919.061,00	
	LOAN		33.958.000,00	14.041.000,00	
	Konsultan	1.274.368,00			
	Lain-lain	3.689.444,00			
	JUMLAH	41.947.826,00	72.370.570,00	53.526.141,00	
2	PPSA				
	Administrasi Proyek	342.907,00	374.348,00	914.968,00	
	Konstruksi RM	4.233.942,00	5.254.100,00	6.020.733,00	
	LOAN				
	Konsultan	100.000,00	801.677,00	5.313.600,00	
	Lain-lain	337.755,00	630.788,00	852.876,00	
	JUMLAH	5.014.604,00	7.060.913,00	13.102.177,00	
3	PAT				
	Administrasi Proyek	197.600,00	247.972,00	317.424,00	
	Konstruksi RM	2.055.834,00	2.255.226,00	1.697.655,80	
	LOAN		13.750.000,00	5.252.000,00	
	Konsultan				
	Lain-lain	772.009,00			
	JUMLAH	3.025.443,00	16.253.198,00	7.267.079,80	
4	Pengendalian Banjir				
	Administrasi Proyek	372.724,00	413.991,00	592.016,00	
	Konstruksi RM	4.638.619,00	6.777.821,00	17.850.226,00	
	LOAN	12.750.000,00			
	Konsultan RM	794.523,00	965.775,00	1.235.900,00	
	LOAN	250.000,00			
	Lain-lain	313.600,00	72.810,00	437.250,00	
	JUMLAH	19.119.466,00	8.230.397,00	20.115.392,00	
5	Proyek Air Baku				
	Administrasi Proyek	248.457,00	242.075,00	444.124,00	
	Konstruksi RM	4.000.000,00	18.425.255,00	18.181.462,00	
	LOAN				
	Konsultan	11.194.076,00	1.224.185,00	1.349.754,00	
	Lain-lain	1.254.015,00			
	JUMLAH	16.696.548,00	19.891.515,00	19.975.340,00	
6	PENGAMANAN PANTAI				
	Administrasi Proyek	225.088,00	281.612,00	366.076,00	
	Konstruksi RM	14.420.187,00	13.169.440,00	23.111.007,00	
	LOAN	17.807.000,00	169.923.800,00	154.821.653,00	
	Konsultan	13.799.576,00	23.306.279,00	11.178.347,00	
	Lain-lain		1.269.219,00	520.649,00	
	JUMLAH	46.251.851,00	207.950.350,00	189.997.732,00	

Table BP-3

LAMPIRAN IIIA

RENCANA PENGADAAN TAHUN ANGGARAN 2007

DIPA No. SP : 2231.0/033-08.01/2007

NAMA SATKER PUSAT / BALAI : WILAYAH BUNGA BALI - PENIDA

procurement

No.	NAMA PPK/SUB KEGIATAN/PAKET	F/N	LOKASI	SABARAN		PAGU (X Rp.1000)		TOTAL
				Vol.	Bal.	RPM	PLN	
1	2	3	4	5	6	7	8	9
REKOR TATA LAKSANAAN BWA BAHU NICA								
04.90.19	PROGRAM PENYELENGGARAAN PIMPINAN KENEGARAAN						3.867.364	3.867.364
0001	PENGELOLAAN GAJI, HONORARIUM DAN TUNJANGAN						1.322.979	1.322.979
	Lokasi/Prop : (22) Bali							
0001	PEMBAYARAN GAJI, LEMBUR, HONORARIUM DAN VAKASI	N	Denpasar	3.048	OB		1.322.979	1.322.979
0002	PENYELENGGARAAN OPERASIONAL PERKANTORAN						2.084.879	2.084.879
	Lokasi/Prop : (22) Bali							
0024	PENGADAAN MAKANAN / MINUAN PENAMBAH DAYA TAHAN	N	Denpasar	83.000	OT		830.960	830.960
	UANG MAKAN PNS							
0032	PENGADAAN PAKAIAN DINAS PEGAWAI	N	Denpasar	139	STEL		31.276	31.276
0098	RETRIBUSI LISTRIK, TELEPON, GAS DAN AIR (LTO)	N	Denpasar	12	BLN		412.388	412.388
0926	PENGADAAN PERLENGKAPAN KANTOR (ATK, BARANG CBT, DAN LANGGANAN MAJALAH)	N	Denpasar	12	DLN		120.422	120.422
2007	LANGGANAN DAYA DAN JASA	N	Denpasar	12	DLN		889.836	889.836
003	PERAWATAN GEDUNG KANTOR/KHUSUS						69.600	69.600
	Lokasi/Prop : (22) Bali							
0205	PERAWATAN GEDUNG KANTOR	F	Denpasar	1.200	M2		69.600	69.600
0004	PERAWATAN SARANA DAN PRASARANA KANTOR						379.896	379.896
	Lokasi/Prop : (22) Bali							
0205	PERAWATAN GEDUNG KANTOR	F	Denpasar	192	M2/T		11.136	11.136
0256	PERBAIKAN PERALATAN KANTOR	F	Denpasar	1	LS		41.360	41.360
1138	PERAWATAN KENDARAAN BERMOTOR RODA 4 / 6 / 9	F	Denpasar	17	UNIT		221.000	221.000
2005	PERAWATAN KENDARAAN BERMOTOR RODA 2	F	Denpasar	38	UNIT		106.400	106.400
05.90.19	PROGRAM PENYELENGGARAAN PIMPINAN KENEGARAAN						1.118.510	1.118.510
0001	PENGELOLAAN GAJI, HONORARIUM DAN TUNJANGAN						691.300	691.300
	Lokasi/Prop : (22) Bali							
0001	PEMBAYARAN GAJI, LEMBUR, HONORARIUM DAN VAKASI	N	Denpasar	1	LS		691.300	691.300
0002	PENYELENGGARAAN OPERASIONAL PERKANTORAN						489.246	489.246
	Lokasi/Prop : (22) Bali							
0024	PENGADAAN MAKANAN / MINUAN PENAMBAH DAYA TAHAN	N	Denpasar	12	DLN		386.960	386.960
	UANG MAKAN PNS							
0098	RETRIBUSI LISTRIK, TELEPON, GAS DAN AIR (LTO)	N	Denpasar	12	DLN		67.160	67.160
0926	PENGADAAN PERLENGKAPAN KANTOR (ATK, BARANG CBT, LANGGANAN MAJALAH)	N	Denpasar	12	DLN		66.126	66.126
003	PERAWATAN GEDUNG KANTOR/KHUSUS						11.000	11.000
	Lokasi/Prop : (22) Bali							
0205	PERAWATAN GEDUNG KANTOR	N	Denpasar	220	M2		11.000	11.000
0004	PERAWATAN SARANA DAN PRASARANA KANTOR						26.966	26.966
	Lokasi/Prop : (22) Bali							
0205	PERAWATAN GEDUNG KANTOR	N	Denpasar	176	M2/T		10.160	10.160
0256	PERBAIKAN PERALATAN KANTOR	F	Denpasar	12	DLN		16.816	16.816
06.90.19	PROGRAM PENYELENGGARAAN PIMPINAN KENEGARAAN						465.221	465.221
0001	PENGELOLAAN GAJI, HONORARIUM DAN TUNJANGAN						139.800	139.800
	Lokasi/Prop : (22) Bali							
0001	PEMBAYARAN GAJI, LEMBUR, HONORARIUM DAN VAKASI	N	Denpasar	684	OB		139.800	139.800
0002	PENYELENGGARAAN OPERASIONAL PERKANTORAN						210.626	210.626
	Lokasi/Prop : (22) Bali							
0024	PENGADAAN MAKANAN / MINUAN PENAMBAH DAYA TAHAN	N	Denpasar	11.880	OT		118.800	118.800
	UANG MAKAN PNS							
0032	PENGADAAN PAKAIAN DINAS PEGAWAI	N	Denpasar	30	OT		6.626	6.626
0926	PENGADAAN PERLENGKAPAN KANTOR (ATK, BARANG CBT, DAN LANGGANAN MAJALAH)	N	Denpasar	12	DLN		31.200	31.200

2007	LANGGANAN DAYA DAN JASA	N	Denpasar	12	BLN	84.000		84.000
0003	PERAWATAN GEDUNG KANTOR/KHUSUS					16.600		16.600
0205	Lokasi/Prop : (22) Bali PERAWATAN GEDUNG KANTOR			12	BLN	16.600		16.600
0004	PERAWATAN SARANA DAN PRASARANA KANTOR					94.870		94.870
0251	Lokasi/Prop : (22) Bali PERAWATAN KENDARAAN KHUSUS	F	Denpasar	1	UNIT	6.480		6.480
0256	PERBAIKAN PERALATAN KANTOR	F	Denpasar	16	UNIT	6.090		6.090
1138	PERAWATAN KENDARAAN BERMOTOR RODA 4 / 6 / 10	F	Denpasar	7	UNIT	87.000		87.000
2005	PERAWATAN KENDARAAN BERMOTOR RODA 2	F	Denpasar	7	UNIT	14.000		14.000
0005	PENYELENGGARAAN TATA USAHA PERKANTORAN KEARSIPAN, PERPUSTAKAAN DAN DOKUMENTASI					3.726		3.726
3276	Lokasi/Prop : (22) Bali JASA POS / GIRO / SERTIFIKAT	N	Denpasar	1	LB	3.726		3.726
04.04.01	PROGRAM PENGEMBANGAN, PENGELOLAAN, DAN KONSERVASI SUNGAI, DANAU DAN SUMBER AIR LAINNYA					668.968		668.968

1	2	3	4	5	6	7	8	9
4417	PEMBANGUNAN WADUK, EMBUNG, SITU DAN BANUNAN PENAMPUNG AIR LAINNYA					668.968		668.968
0002	Lokasi/prop : (22) BALI ADMINISTRASI KEGIATAN	N	Denpasar	226	OB	90.760		90.760
0095	PEMBINAAN / KOORDINASI DAN KONSULTASI PENGAWASAN IKLAN/PENGUMUMAN/PEMBERITAHUAN	N	Denpasar	1.777	OT	360.316		360.316
0273	PENGADAAN MEUBELAIR	F	Denpasar	1	LB	26.000		26.000
04.04.03	PROGRAM PENGEMBANGAN DAN PENGELOLAAN JARINGAN IRIGASI, RAWA DAN JARINGAN PENGAIRAN					192.900		192.900
0080	PENGADAAN TANAH					6.000		6.000
0297	Lokasi/Prop : (22) Bali PENGADAAN TANAH	F	Denpasar	2	ARE	6.000		6.000
4424	PEMBANGUNAN /PENINGKATAN PRASARANA IRIGASI DAN AIR TANAH					47.837		47.837
0301	Lokasi/Prop : (22) Bali PEMBUATAN SERTIFIKAT TANAH	N	Denpasar	1	LB	47.837		47.837
4426	REHABILITASI JARINGAN IRIGASI					669.463		669.463
0002	Lokasi/prop : (22) BALI ADMINISTRASI KEGIATAN	N	Denpasar	1.262	OT	264.882		264.882
0095	IKLAN/PENGUMUMAN/PEMBERITAHUAN	N	Denpasar			46.000		46.000
0121	PENGAWASAN/SUPERVISI, KONSTUKSI	N	Denpasar	1	LAP	469.671		469.671
0277	PENGADAAN ALAT PENGOLAH DATA	N	Denpasar	11	UNIT	70.000		70.000
05.04.04	PROGRAM PENGENDALIAN BANJIR DAN PENGAMANAN					1.633.667		1.633.667
0032	PEMBANGUNAN SARANA/PRASARANA PENGENDALIAN BANJIR					833.263		833.263
0002	Lokasi/prop : (22) BALI ADMINISTRASI KEGIATAN	N	Denpasar	3.936	OB	233.460		233.460
0032	PENGADAAN PAKAIAN DINAS PEGAWAI	N	Denpasar	40	STEL	9.000		9.000
0095	PEMBINAAN / KOORDINASI DAN KONSULTASI PENGAWASAN	N	Denpasar	856	OT	171.262		171.262
0092	PENELITIAN KLASIFIKASI, REGISTRASI, PENERAPAN SISTEM	N	Denpasar	1	LB	98.360		98.360
0095	IKLAN/PENGUMUMAN/PEMBERITAHUAN	N	Denpasar	1	LB	27.000		27.000
0121	PENGAWASAN/SUPERVISI KONSTUKSI	N	Denpasar	1	LB	20.867		20.867
0277	PENGADAAN ALAT PENGOLAH DATA	N	Denpasar	4	UNIT	47.000		47.000
1138	PERAWATAN KENDARAAN BERMOTOR RODA 4 / 6 / 10	N	Denpasar	12	BLN	193.600		193.600
2005	PERAWATAN KENDARAAN BERMOTOR RODA 2	N	Denpasar	12	BLN	42.864		42.864
4433	PEMBANGUNAN SARANA/PRASARANA PENGAMANAN PANTAI					700.674		700.674
0002	Lokasi/prop : (22) BALI ADMINISTRASI KEGIATAN	N	Denpasar	1	LB	192.410		192.410
0032	PENGADAAN PAKAIAN DINAS PEGAWAI	N	Denpasar	66	STEL	13.060		13.060
0095	IKLAN/PENGUMUMAN/PEMBERITAHUAN	N	Denpasar	2	KL	20.000		20.000
0251	PERAWATAN KENDARAAN KHUSUS	N	Denpasar	1	UNIT	11.000		11.000
0256	PERBAIKAN PERALATAN KANTOR	N	Denpasar	9	UNIT	6.120		6.120
0926	PENGADAAN PERLENGKAPAN KANTOR (ATK, BARANG CETAK DAN LANGGANAN MAJALAH)	N	Denpasar	1	LB	100.600		100.600
0967	MONITORING DAN EVALUASI	N	Denpasar	1	LB	134.844		134.844
1138	PERAWATAN KENDARAAN BERMOTOR RODA 4 / 6 / 10	N	Denpasar	10	UNIT	92.260		92.260
2005	PERAWATAN KENDARAAN BERMOTOR RODA 2	N	Denpasar	12	BLN	64.400		64.400
2007	LANGGANAN DAYA DAN JASA	N	Denpasar	12	BLN	66.000		66.000
06.03.01	PROGRAM PENYEDIAAN DAN PENGELOLAAN AIR BAKU					690.998		690.998

4442	PEMBANGUNAN PRASARANA PENGAMBILAN SAL. PEMBAWA AIR BAKU					890.999		890.999
	Lokasi/prop : (22) BALI							
0002	ADMINISTRASI KEGIATAN	N	Denpasar	1	LS	170.840		170.840
0059	PEMBINAAN/KOORDINASI DAN KONSULTANSI PENGAWASAN	N	Denpasar	1	LS	206.720		206.720
0277	PENGADAAN ALAT PENGOLAH DATA	N	Denpasar	3	UNIT	29.500		29.500
0306	PENGLOLAAN BARANG MILIK / KEKAYAAN NEGARA	N	Denpasar	1	LS	137.840		137.840
1920	PENGENDALIAN MUTU	N	Denpasar	1	LS	47.299		47.299

2. REKAPITULASI PERENCANAAN DAN PROGRAM

04.04.01	PROGRAM PENGEMBANGAN, PENGELOLAAN, DAN KONSERVASI SUNGAI, DANAU DAN SUMBER AIR LAINNYA					2.960.640		2.960.640
4417	PEMBANGUNAN WADUK, EMBUNG SITU DAN BANGUNAN PENAMPUNG AIR LAINNYA					2.960.640		2.960.640
1	- Studi Konservasi Danau Buyan	N	Kab. Buleleng	1	LAP	350.000		350.000
2	- Penyusunan Pola Pengembangan Sumber Daya Air Wilayah Sungai	N	Menyebarkan	1	LAP	750.000		750.000
3	- Detail Desain Embung	N	Kab. Buleleng	1	LAP	255.910		255.910
4	- Detail Desain Embung	N	Kab. Gianyar	1	LAP	255.500		255.500
5	- Detail Desain Embung	N	Kab. Bangli	1	LAP	262.100		262.100
6	- Detail Desain Embung Kecil di Kawasan Pura Basakih	N	Kab. Karangasem	1	LAP	244.370		244.370
7	- Detail Desain Embung di Daerah Kritis Air di Kecamatan Tejakula	N	Kab. Buleleng	1	LAP	215.550		215.550
8	- AMDAL dan Model Test Waduk Jernih	N	Kab. Bangli	1	LAP	350.000		350.000
9	- Model Test Waduk Tilab	N	Kab. Buleleng	1	LAP	275.000		275.000
04.04.03	PROGRAM PENGEMBANGAN DAN PENGELOLAAN JARINGAN IRIGASI, RAWA DAN JARINGAN PENGAIRAN					2.994.376		2.994.376
109	SURVEY / STUDI KELAYAKAN / PENYUSUNAN MASTER PLAN / DED / SID					2.994.376		2.994.376
10	- Survey Investigasi dan Detail Desain 5 (lima) buah Bendung	N	Kab. Buleleng	5	BH	350.000		350.000
11	- Survey Investigasi dan Detail Desain Jaringan Irigasi	N	Kab. Buleleng	1.011	HA	214.307		214.307
12	- Survey Investigasi dan Detail Desain 6 (lima) buah Bendung	N	Kab. Jembrana	5	BH	350.000		350.000
13	- Survey Investigasi dan Detail Desain Jaringan Irigasi	N	Kab. Jembrana	1.770	HA	229.619		229.619
14	- Survey Investigasi dan Detail Desain 5 (lima) buah Bendung	N	Kab. Karangasem	5	BH	350.000		350.000
15	- SIDD Ji. Di Kab. Karangasem, di Kab. Gianyar dan di Kab. Badung	N	Tersebar	1.992	HA	233.046		233.046

1	2	3	4	5	6	7	8	9
16	- SIDD 5 (lima) buah Bendung di Kab. Badung dan Kab. Tabanan	N	Tersebar	5	BH	350.000		350.000
17	- Survey Investigasi dan Detail Desain dan Jaringan Irigasi di Kab.	N	Kab. Tabanan	1.010	HA	217.404		217.404
18	- Pemb. Base Data JI pd Sub SWS 03.01.13, 03.01.15, 03.01.16 dan 03.01.17, 03.01.20 di Kab Klungkung dan 03.01.18	N	Tersebar	3	LKB	200.000		200.000
19	- Pemb. Base Data JI pd Sub SWS 03.01.01 di Kab. Badung dan di	N	Tersebar	1	LAP	200.000		200.000
20	- Study Pengembangan Sistem Pompa Hidran untuk memenuhi k	N	Kab. Tabanan	1	LAP	200.000		200.000
4453	PEMBINAAN PERENCANAAN TEKNIS IRIGASI AIR TANAH					100.000		100.000
21	- Pengukuran Situasi dan Detail Desain JIAT di Ekskavasi Melaya (2)	N	Kab. Tabanan	1	LAP	100.000		100.000
05.04.04	PROGRAM PENGENDALIAN BANJIR DAN PENYAMANAN					1.350.000		1.350.000
09	PEMBANGUNAN WADUK, EMBUNG SITU DAN BANGUNAN PENAMPUNG AIR LAINNYA					1.350.000		1.350.000
22	- Pengukuran dan Perencanaan Teknis Tukad Penet dan Anak Bt	N	Kab. Tabanan	1	LAP	350.000		350.000
23	- Pengukuran dan Perencanaan Teknis Tukad Yeh Lalang di Keo.	N	Kab. Buleleng	1	LAP	300.000		300.000
24	- Studi dan Perencanaan Teknis Pengendalian Banjir Tukad Bente	N	Kab. Karangasem	1	LAP	350.000		350.000
25	- Pengukuran dan Perencanaan Teknis Tukad Banyuning	N	Kab. Karangasem	1	LAP	250.000		250.000
26	- Pengukuran dan Perencanaan Teknis Tukad Pakelisan	N	Kab. Gianyar	1	LAP	100.000		100.000
06.03.01	PROGRAM PENYEDIAAN DAN PENGELOLAAN AIR BAKU					1.800.000		1.800.000
4442	PEMBANGUNAN PRASARANA PENGAMBILAN DAN SAL. PEMBAWA AIR BAKU					1.800.000		1.800.000
27	- Penyusunan Amdal Waduk Muara Nusa Dua Tahap II.	N	Kota Denpasar	1	LAP	275.000		275.000
28	- Penyusunan Amdal Waduk Muara Unda	N	Kab. Klungkung	1	LAP	250.000		250.000
29	- Studi Identifikasi Potensi Air Baku,	N	Kab. Gianyar	1	LAP	200.000		200.000
30	- Detail Desain Long Storage Tukad Penet,	N	Kab. Badung	1	LAP	275.000		275.000
31	- Detail Desain Waduk Telagawaja,	N	Kab. Karangasem	1	LAP	800.000		800.000

PRK PENGENDALIAN BANJIR DAN PENGAMANAN 23.501.412

04	PROGRAM PENGENDALIAN BANJIR DAN PENGAMANAN					23.501.412		23.501.412
	PEMBANGUNAN SARANA / PRASARANA PENGENDALI BANJIR					20.413.492		20.413.492
	- Pengadaan Theodolit TOTAL STATION dan Aksesoris	F	Denpasar	1	Unit	289.819		289.819
	- Pengadaan Handy GPS Receiver	F	Denpasar	1	Unit	9.000		9.000
	- Perkuatan Tebing dan Pemasangan Grassblock di Bantaran Tuk	F	Kota Denpasar	1	PKT	9.114.673		9.114.673
	- Normalisasi Alur dan Perkuatan Tebing Tukad Mati	F	Kota Denpasar	1	PKT	2.650.000		2.650.000
	- Normalisasi Alur dan Perkuatan Tebing Tukad Yeh Embang di K	F	Kab. Jembrana	1	PKT	1.280.000		1.280.000
	- Pembuatan Check Dam Tukad Belatung di Desa Ban,	F	Kab. Karangasem	1	PKT	7.100.000		7.100.000
	REHABILITASI SARANA / PRASARANA PENGENDALI BANJIR					687.920		687.920
	- Rehabilitasi Sarana/Prasarana Pengendali Banjir (swakelola)	F	Tersebar			687.920		687.920
	OPERASI DAN PEMELIHARAAN PRASARANA PENGENDALIAN BANJIR					2.400.000		2.400.000
	- Pengadaan Bronjong Kawal untuk Bahan Banjir, Penanggulangan	F	Denpasar	3.300	UNIT	1.185.000		1.185.000
	- Pengadaan Alat Berat Excavator (untuk menunjang kegiatan pe	F	Denpasar	1	UNIT	1.245.000		1.245.000
	dan urat bencana)							

PRK PENGEMBANGAN DAN KONSERVASI SUMBER DAYA AIR 48.872.881

01	PROGRAM PENGEMBANGAN, PENGELOLAAN, DAN KONSERVASI SUNGAI, DANAU DAN SUMBER AIR LAINNYA					48.872.881		48.872.881
7	PEMBANGUNAN WADUK, EMBUNG, SITU DAN BANGUNAN PENAMPUNG AIR LAINNYA					46.472.881		46.472.881
1	- Konsultan Supervisi Pembangunan Waduk Benel Tahap II	N	Kab. Jembrana	1	Lap	789.041		789.041
2	- Konsultan Supervisi Pembangunan Embung Baturinggit	N	Kab. Karangasem	1	Lap	128.000		128.000
3	- Konsultan Supervisi Pembangunan Embung Dalah	N	Kab. Karangasem	1	Lap	142.240		142.240
4	- Konsultan Supervisi Pembangunan Checkdam Tukad Sama di Ka	N	Kampus UNUD	1	Lap	90.973		90.973
5	- Survey Pengaliran / Hidrologi (Swakelola)	N	Tersebar	1	Lap	609.328		609.328
6	- Rehab. Tempat parkir/Garase SNVT Pengembangan dan Penga	F	Kota Denpasar	1	PKT	60.000		60.000
7	- Pembangunan Embung Batu Ringgit	F	Kab. Karangasem	1	PKT	3.000.000		3.000.000
8	- Pembangunan Embung Dalah	F	Kab. Karangasem	1	PKT	5.000.000		5.000.000
9	- Fasilitas Gerakan nasional Kemitraan Penyelamatan Air (Swake	N	Kota Denpasar	1	Lap	87.709		87.709
10	- Pembangunan Checkdam Tukad Yeh Hoo	F	Kab. Tabanan	1	PKT	1.500.000		1.500.000
11	- Pembangunan Checkdam Suplesi Tukad Sama	F	Kab. Buleleng	1	PKT	1.804.298		1.804.298
12	- Pembangunan Waduk Benel Tahap II	F	Kab. Jembrana	1	PKT	34.923.997		34.923.997
13	- Pengadaan Peralatan Hidrologi	F	Denpasar			300.000		300.000
14	- Pembangunan Pos Klimatologi	F	Denpasar	1	PKT	50.000		50.000
8	REHABILITASI WADUK, EMBUNG, SITU DAN BANGUNAN PENAMPUNG AIR LAINNYA					1.100.000		1.100.000
15	- Rehabilitasi Prasarana Waduk Grogak	F	Kab. Buleleng	1	PKT	300.000		300.000
16	- Rehabilitasi Prasarana Waduk Palasari	F	Kab. Jembrana	1	PKT	100.000		100.000
17	- Pengamanan Mata Air Telaga Tlata	F	Kab. Karangasem	1	PKT	350.000		350.000
18	- Pengamanan Mata Air Mengening Bestala	F	Kab. Buleleng	1	PKT	200.000		200.000
19	- Pengamanan Mata Air Pucuk Mananga	F	Kab. Karangasem	1	PKT	150.000		150.000

PRK PENGAMANAN PANTAI 26.898.874

1.04	PROGRAM PENGENDALIAN BANJIR DAN PENGAMANAN					26.898.874	181.443.000	178.041.874
13	PEMBANGUNAN SARANA/PRASARANA PENGAMANAN PANTAI					26.898.874	181.443.000	178.041.874
	- Pengamanan Pantai Soka/Serijong (135 m).	F	Kab. Tabanan	135	M	2.183.236		2.183.236

		2	3	4	5	6	8	9
	- Pengamanan Pantai Padanggalak (800 m),	F	Kota Denpasar	950	M	17.000.000		17.000.000
	- Supervisi untuk pek. pengamanan Pantai Soka/Serijong, Kab. Ta	N	Kab. Tabanan	1	LAP	600.000		600.000
	- pengamanan Pantai Padanggalak Kota Denpasar							
	- Consulting Services Ball Beach Conservation Project	N		1	LAP		8.700.000	8.700.000
	- Pengamanan Pantai Kuta	F	Kuta	1	PKT	6.816.438	117.721.208	124.538.646
	- Dana Cadangan			1	LS		26.021.792	26.021.792

PROGRAM PENGEMBANGAN DAN PENGELOLAAN AIR BAKU							16.436.812		16.436.812
06.03.01	PROGRAM PENYEDIAAN DAN PENGELOLAAN AIR BAKU								
0081	PENGADAAN KENDARAAN					170.000		170.000	
1	- Kendaraan Roda-2	F	Denpasar	2	UNIT	40.000		40.000	
2	- Kendaraan Roda-4	F	Denpasar	1	UNIT	130.000		130.000	
4442	PEMBANGUNAN PRASARANA PENGAMBILAN DAN SALURAN PEMBAWA AIR BAKU					18.266.812		18.266.812	
3	- Supervisi Pembangunan Sistem Penyediaan Air Baku Telagawa	N	Kab. Karangasem	1	LAP	300.000		300.000	
4	- Supervisi Pembangunan Sistem Penyediaan Air Baku Nusa Penida	N	Kab. Klungkung	1	LAP	50.000		50.000	
5	- Supervisi Penataan Kawasan Waduk Muara Nusa Dua	N	Kota Denpasar	1	LAP	50.000		50.000	
6	- Pembangunan Sistem Penyediaan Air Baku Telagawa, (Lanjut)	F	Kab. Karangasem	1	PKT	12.546.000		12.546.000	
7	- Pembangunan Sistem Penyediaan Air Baku Nusa Penida	F	Kab. Klungkung	1	PKT	1.500.000		1.500.000	
8	- Pembangunan Sistem Penyediaan Air Baku Desa Kedis Buauang	F	Kab. Buleleng	1	PKT	570.812		570.812	
9	- Penataan Kawasan Waduk Muara Nusa Dua	F	Kota Denpasar	1	PKT	750.000		750.000	
10	- Pembangunan Sistem Air Baku Desa Lembongan	F	Kab. Klungkung	1	PKT	500.000		500.000	
BRK PENYEDIAAN AIR BAKU							170.000	4.536.536	16.207.348
BRK PENYEDIAAN AIR TANAH							3.762.083	4.536.536	8.298.619
04.04.03	PROGRAM PENGEMBANGAN DAN PENGELOLAAN JARINGAN IRRIGASI, RAWA DAN JARINGAN PENGAIRAN								
4424	PEMBANGUNAN /PENINGKATAN PRASARANA IRRIGASI DAN AIR TANAH					459.603	4.536.536	4.996.139	
1	- Monitoring Kegiatan ME (swakelola)	F	Kab. Buleleng	1	PKT	109.603		109.603	
2	- Pemboran Sumur Uji 2 (dua) di Kab. Jembrana dan Kab. Buleleng	F	Tersebar	1	PKT	350.000		350.000	
3	- Pembangunan JIAT (473 Ha) di kab. Jembrana, Buleleng dan Kab. Bangli (Ball Groundwater Irrigation)	F	Tersebar	1	PKT		4.536.536	4.536.536	
4428	REHABILITASI PRASARANA IRRIGASI AIR TANAH					2.860.000		2.860.000	
4	- Peningkatan Jaringan Irigasi Air Tanah (18 Ha) PKT 05	F	Tersebar	1	PKT	150.000		150.000	
5	- Redevelopment, repumping test sumur pompa 10 lokasi	F	Tersebar	1	PKT	250.000		250.000	
6	- Pengadaan dan Pemasangan Mesin dan Pompa Turbin Kap 20 Kw Genaset dan Pompa Sumber-sumber 1 (satu)	F	Denpasar	1	PKT	950.000		950.000	
7	- Perbaikan Jaringan Irigasi Air Tanah 100 Ha	F	Tersebar	1	PKT	1.500.000		1.500.000	
4431	OPERASI DAN PEMELIHARAAN JARINGAN IRRIGASI AIR TANAH					442.450		442.450	
8	- Operasi dan Pemeliharaan Jaringan Irigasi (swakelola)	F	Tersebar	1	LAP	442.450		442.450	
BRK IRRIGASI							28.516.798	21.708.894	60.224.492
04.04.03	PROGRAM PENGEMBANGAN DAN PENGELOLAAN JARINGAN IRRIGASI, RAWA DAN JARINGAN PENGAIRAN								
0113	REHABILITASI GEDUNG KANTOR/SEKOLAH/RUMAH NEGARA					1.083.048		1.083.048	
1	- Rehab. Gedung sarana Penunjang Kegiatan Pelatihan Tatalaksana	F	Kab. Tabanan	1	PKT	583.048		583.048	
2	- Rehabilitasi dan Penataan Gedung Kantor di Kodya	F	Kodya Denpasar	1	PKT	500.000		500.000	
4422	PEMBANGUNAN / PENINGKATAN JARINGAN IRRIGASI					4.097.010		4.097.010	
4	- Pelatihan KPL/Fasilitator/Pemandu (swakelola)	N	Tersebar	1	LAP	1.182.530		1.182.530	
5	- Penataan Kawasan Bendungan Telaga Tunjung (2,50 ha)	F	Kab. Tabanan	1	PKT	1.602.184		1.602.184	
10	- Rehabilitasi Bendung Benta, Desa, Anyar dan Sb. Lea	F	Kab. Buleleng	1	PKT	1.271.198		1.271.198	
19	- Pengadaan mesin potong rumput	F	Kota Denpasar	2	UNIT	11.000		11.000	
4426	REHABILITASI JARINGAN IRRIGASI					23.338.740	21.708.894	45.044.434	
6	- Perbaikan Jaringan Irigasi Galungan dan Sekumpul di Kab. Buleleng	F	Kab. Buleleng	1	PKT	593.811		593.811	
7	- Saba Basin Irrigation Improvement (3,650 Ha) di Kab. Buleleng	F	Kab. Buleleng	3,650	HA	8.730.000		8.730.000	
8	- Perbaikan dan Peningkatan Ji. Pusaka Hulu, Pusaka Pale Rejod	F	Kab. Jembrana	1	PKT	2.000.000		2.000.000	
9	- Biluk Poh dan Tukad Aya Basin Irrigation Improvement (1,378 Ha)	F	Kab. Jembrana	1,378	HA	3.540.694		3.540.694	
10	- Perbaikan dan Peningkatan Ji. Bunteh Sangkulung, Bushan, Per	F	Kab. Gianyar	1	PKT	3.488.000		3.488.000	
11	- Perbaikan dan Peningkatan Jaringan Irigasi Di. Kedewatan	F	Kab. Gianyar	1	PKT	3.610.068		3.610.068	
12	- Perbaikan dan Peningkatan Ji. Bangklang Sidem, Tampugan I	F	Kab. Karangasem	1	PKT	3.100.000		3.100.000	
13	- Perbaikan dan Peningkatan Jaringan Irigasi Buangga, Belong P	F	Kab. Badung	1	PKT	2.435.600		2.435.600	
14	- Perbaikan dan Peningkatan Jaringan Irigasi Di. Membal	F	Kab. Badung	1	PKT	2.624.088		2.624.088	
15	- Perbaikan dan Peningkatan Jaringan Irigasi Tiyang Gading	F	Kab. Tabanan	1	PKT	3.105.000		3.105.000	
16	- Perbaikan dan Peningkatan Jaringan Irigasi Yeh Matan	F	Kab. Tabanan	1	PKT	747.183		747.183	
17	- Perbaikan dan Peningkatan Jaringan Irigasi Penebel	F	Kab. Tabanan	1	PKT	1.475.000		1.475.000	
18	- Unda Basin Irrigation Improvement	F	Kab. Klungkung	1	PKT		9.432.000	9.432.000	

04.04.01	PROGRAM PENGEMBANGAN, PENGELOLAAN, DAN KONSERVASI SUNGAI, DANAU DAN SUMBER AIR LAINNYA					218.000		218.000
4417	PEMBANGUNAN WADUK, EMBUNG SITU DAN BANGUNAN PENAMPUNG AIR LAINNYA					100.000		100.000

1	2	3	4	5	6	7	8	9	
1	- Monitoring dan Evaluasi Tahunan Waduk Pelasari	N	Kab. Jembrana		1	BUAH	80.000	80.000	
2	- Monitoring dan Evaluasi Tahunan Waduk Grogak	N	Kab. Buleleng		1	BUAH	80.000	80.000	
4419	O & P WADUK, EMBUNG, SITU DAN BANGUNAN PENAMPUNG AIR LAINNYA						118.000	118.000	
3	- O&P Waduk Grogak dan Pelasari	N	Kab. Buleleng Kab. Jembrana				118.000	118.000	
06.03.01	PROGRAM PENYEDIAAN DAN PENGELOLAAN AIR BAKU						764.080	764.080	
4446	O & P PRASARANA PENGAMBILAN DAN SALURAN PEMBAWA AIR BAKU						764.080	764.080	
4	- O & P Waduk Muara Nusa Ous, Embung Seraya, Mata Air Guyan Bendung Karat Timus, Reserv. Pabel, Reserv. Sembiran (swakelola)	N	Kab. Jembrana				764.080	764.080	
04.04.03	PROGRAM PENGEMBANGAN DAN PENGELOLAAN JARINGAN IRIGASI, RAWA DAN JARINGAN PENGAIRAN						643.881	643.881	
4426	REHABILITASI JARINGAN IRIGASI						643.881	643.881	
5	- Rencana O&P Waduk Telaga Tunjung (swakelola)	N	Kab. Tabanan				643.881	643.881	
05.04.04	PROGRAM PENGENDALIAN BANJIR DAN PENGAMANAN						726.000	726.000	
4439	OPERASI DAN PEMELIHARAAN PRASARANA PENGENDALIAN BANJIR						600.000	600.000	
6	- Pengamanan Bgn. Persungalan brp Perbaikan Park. Tobing Ana	F	Kab. Gianyar	30	M		99.500	99.500	
7	- Pengamanan Bgn. Persungalan brp Perbaikan Park. Tobing / Tal	F	Kab. Jembrana	76	M		126.500	126.500	
8	- Pengerukan Alur Tuked Badung dan Tuked Mail	F	Kota Denpasar	1.500	M		376.000	376.000	
4440	OPERASI DAN PEMELIHARAAN PRASARANA PENGAMANAN PANTAI						126.000	126.000	
9	- Pemeliharaan Bangunan Pengamanan Pantai Canggu	F	Kab. Badung	26	M		126.000	126.000	
Total							168.987.403	177.887.230	346.874.633
Jumlah Paket Fisik		59			59	PKT	148.847.216	177.887.230	324.834.446
Jumlah Paket Non Fisik		42			42	LAP	22.040.188	0	22.040.188

- Kolom
- 11 : Dilai Nomor Pinjaman Luar Negeri (??.) untuk kerjaan yang dibayar dengan PLN
 - A : Pengumuman : Medi Masa dan Elektronik
 - B : Pendaftaran/Pengambilan Dokumen Prakuualifikasi
 - C : Pemasukan Dokumen Prakuualifikasi
 - D : Evaluasi Dokumen Prakuualifikasi
 - E : Penetapan Hasil Prakuualifikasi
 - F : Pengumuman Daftar Pendek Pelelangan
 - G : Masa Banggah Prakuualifikasi
 - H : Undangan Kepada Peserta yang lulus Prakuualifikasi
 - I : Pengambilan Dokumen Lelang

- J : Penjelasan
- K : Pengumuman Berita Acara Penjelasan
- L : Pemasukan Penawaran
- M : Pembukaan Penawaran
- N : Evaluasi Penawaran
- O : Penetapan Pemenang
- P : Pengumuman Pemenang
- Q : Masa Banggah
- R : Penunjukan Pemenang
- S : Penandatanganan Kontrak

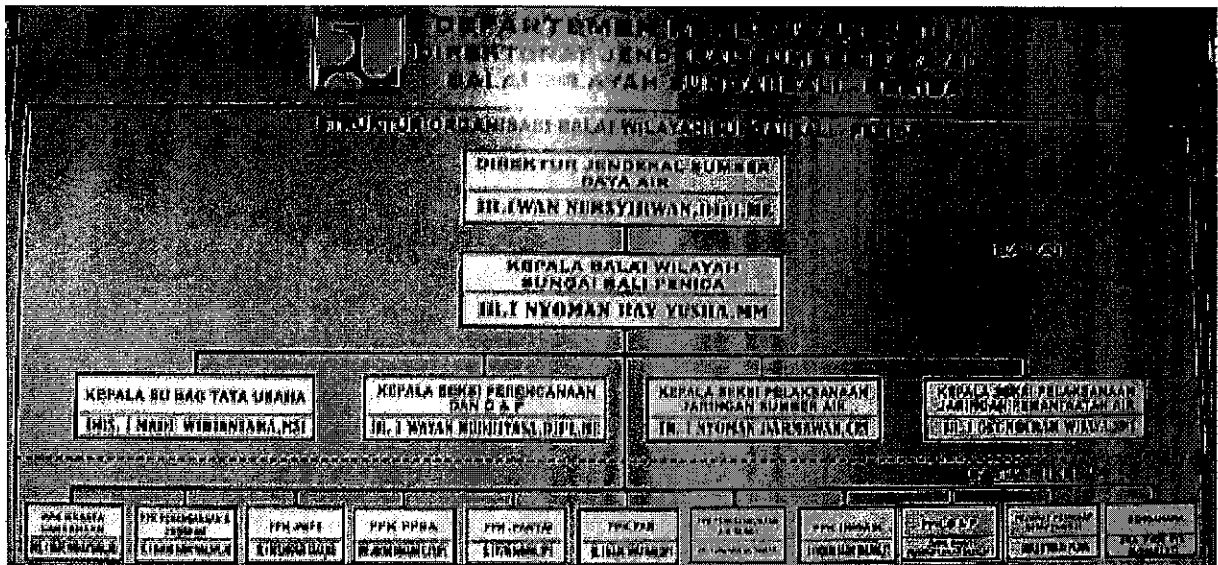


Fig. BP-1 Organization Chart of BWS Bali-Penida

Table PJTI-1 The role demarcation among the related organizations regarding to flood control, water allocation, and conservation of environment

<p><u>Flood control</u></p> <p>The regional government (Province/District) is ultimately responsible for flood management and addressing flood damage, but PJT I plays a primary role, having responsibility for O&M of flood protection infrastructure and for the Flood Forecasting and Warning System (FFWS). PJT I provides information concerning water levels. The FFWS at PJT I's main office is used to prevent or mitigate damage and to ensure public safety.</p>
<p><u>Water Allocation</u></p> <p>Water allocation in the Brantas Basin is based on a water allocation plan, which is discussed and agreed by representatives of various categories of water users, as well as by PJT I, in a coordinated forum called Provincial Water Resources Management Committee (PTPA). The committee established based on the East Java Governor's Decree No. 59 of 1994, is supposed to be a coordination body where decision on all management aspects in water resources (planning, implementing, supervising and controlling) in its respective area is made.</p> <p>PTPA members are currently from the water resources related agencies and the water user companies (State Electric Power Company/PLN and Regional Water Supply Enterprises/PDAM); other water users are represented by the related local government agencies, such as Irrigation, Industrial and Agricultural Services. However, it is planned to include all the stakeholders, such as farmers association, industrial association, etc.</p> <p>In carrying out its tasks, PTPA is supported by an executing committee for each river basin area, which is called the Basin Water Resources Management Committee (Panitia Pelaksana Tata Pengaturan Air/PPTPA). This basin committee has a technical team for each activity area, which is so far for water allocation and flood control, but should be expanded to cover other areas as well, such as watershed management, water quality control, etc.</p> <p>The committee meets in early November and May to ratify water allocations in wet and dry seasons and the reservoir operation patterns on a 10-day basis. Before these official meetings, a small preliminary meeting is held among PJT I, East Java Provincial Irrigation Service, State Electric Power Company (PLN) and other water users to negotiate for water allocation and decide on the proposed strategy. Historic water rights and existing water use permits are taken into account.</p>
<p><u>Conservation of environment</u></p> <p>For conservation of environment especially water pollution control, final responsibility lies with the Governor. Provincial Regulation 5/2000, in the interest of the decentralizing authority, makes it possible for the Governor to delegate responsibility to the head of the Provincial Environmental Pollution Control Office (Bapedalda). This agency coordinates all other agencies dealing with water pollution control. The Provincial Public Works Service (Dinas PU Pengairan Propinsi) is responsible for domestic and municipal wastewater and installation of sanitation facilities and Provincial Industry Service (Dinas Perindustrian) is considered responsible for industrial pollution control. Based on Governor Decree No. 28/2000, PJT I is responsible to conduct water quality monitoring in water bodies including monitoring and evaluating water quality changes in water bodies; collecting and evaluating water pollution data and reporting them to the Governor.</p> <p>Meanwhile, Law 22/1999 on Regional Government further devolves authority to District Governments and Urban Municipalities to deal with their industrial polluters and to handle sewerage and wastewater treatment. At the basin level, as part of the water sector reform, Government Regulation (PP) No. 82/2001 superseded PP 20/1990 and places management of urban and municipal water pollution under provincial, district and municipal purview. The Ministry of Agriculture is to be involved in non-point source pollution from agricultural sources but formally, its regulation is under Ministry of Environmental Affairs (KLH). Regardless of all these new developments, it is ultimately expected that the Governor or Regent, according to their authority, will take action for a polluter to be prosecuted.</p>

Table PJTI-2 Balance of Revenue and Cost of PJT I in 2004 – 2006

(in million Rp)

Item	2004	2005	2006
I. BUSINESS ACTIVITY			
A. INCOME	59,148	74,223	90,210
1. WATER SERVICE SECTOR	48,481	59,926	73,128
a. Electricity (PLN)	26,071	31,245	40,265
b. Domestic Water Supply (PDAM)	10,899	12,746	15,629
c. Industries (Industrial Companies)	11,512	15,935	17,234
2. NON WATER SERVICE SECTOR	10,667	14,297	17,082
a. Tourism	2,026	2,848	3,892
b. Equipment	4,081	4,718	3,892
c. Construction	3,658	5,764	7,959
d. Consultancy and Other Services	902	968	1,339
B. EXPENSE	53,513	64,275	81,232
1. WATER SERVICE SECTOR	48,678	56,659	70,927
a. O & M	25,804	33,694	44,162
b. Watershed Management	975	1,006	1,248
c. Depreciation	3,285	3,248	3,248
d. Employee Expenses	11,747	11,233	13,626
e. Production Services	1,415	1,580	1,870
f. Duty Trip Expenses	1,765	1,884	2,235
g. Miscellaneous	2,398	2,655	3,100
h. Marketing Expenses	967	1,059	1,079
i. R & D	322	300	358
2. NON WATER SERVICE SECTOR	4,835	7,616	10,305
a. Non-Water Services Expenses	4,624	7,382	9,892
b. Depreciation	211	234	413
C. PROFIT / LOSS	5,635	9,948	8,977
1. Water Service Sector	(197)	3,267	2,200
2. Non Water Service Sector	5,832	6,681	6,777
II. OTHER PJT I ACTIVITY			
A. OTHER PJT I INCOME	889	2,638	3,544
1. Government Subsidy	-	1,718	1,953
2. Bank Interest / Giro	562	604	1,084
3. Others	327	316	507
B. OTHER PJT I EXPENSE	292	2,668	3,751
1. Government Subsidy	-	1,718	1,953
2. Auditing KAP Expenses	89	97	1,798
3. Bank Administration Expenses, etc.	203	853	
C. PROFIT / LOSS	598	(30)	(207)
III. PROFIT/ LOSS BEFORE GOVERNMENT ASSIGNATION	6,233	9,918	8,770
IV. PUBLIC SERVICE OBLIGATION			
A. INCOME	1,821	-	3,974
1. Government Subsidy	1,821	-	-
2. Government Loan	-	-	3,974
B. EXPENSE	1,970	2,297	3,974
1. Using PJT I Budget	1,970	2,297	
2. Using Government Budget	-	-	3,974
C. PROFIT / LOSS	(149)	(2,297)	0
V. PROFIT / LOSS BEFORE TAX	6,084	7,621	8,770
VI. INCOME (PROFIT) TAX			
1. Paid Tax	2,045	2,530	2,790
2. Unpaid Tax	(232)	(379)	(202)
	1,813	2,151	2,588
VII. NET PROFIT (PROFIT AFTER TAX)	4,271	5,469	6,182

Source : Annual Report of PJT I in 2004 - 2006

Tabel PJTI-3 Number of Staff by Educational Background in PJT I

No.	Education Grade	ORG	NOTB	NOB	TOTAL
1	Master degree (S-2)	28			28
2	Academic Bachelor degree (S-1)	56	1	5	62
3	Professional Bachelor degree (D-3)	14		4	18
4	High School graduate (SLTA)	165	91	43	299
5	Midle School graduate or lower grade (≤SLTP)	61	30	1	92
	TOTAL	324	122	53	499

Tabel PJTI-4 Number of Staff based on Year of Experience in PJT I

No.	Year of Experience	ORG	NOTB	NOB	TOTAL
1	0 - 10	62	104	51	217
2	11 - 20	262	19	1	282
	TOTAL	324	123	52	499

Tabel PJTI-5 Number of Staff based on Age Structures in PJT I

No.	Range of Age	ORG	NOTB	NOB	TOTAL
1	20 - 30	14	4	32	50
2	31 - 40	53	34	13	100
3	41 - 50	141	66	6	213
4	51 - 60	116	19	1	136
	TOTAL	324	123	52	499

Note:

Excluding outsourcing staff

ORG : Permanent Staff

NOB : Non-permanent (Max. 3 Years)

NOTB : Non-permanent (Max. 5 Years)

Table PJTI-6 List of Practical Guidelines which Available and Not Available at PJT I

NO	PRACTICAL GUIDELINES	AVAILABLE	NOT AVAILABLE
1	Data entry and data management	√	
2	Measurement & analysis of rainfall and climate data	√	
3	Frequency Analysis for hydrological data	√	
4	O&M of Hydrology station	√	
5	Calibration and Maintenance of hydrological equipments	√	
6	Flows Measurement	√	
7	Management of River flows data	√	
8	Survey and Analysis of hydrology for river	√	
9	Collection and Monitoring Hydrological data	√	
10	Work Instructions of H-V Curve	√	
11	General Procedure of Calibration	√	
12	Procedure of Software Calibration	√	
13	Procedure Hydrology Collecting and Monitoring	√	
14	Work Instruction of measurement of river velocity & discharge	√	
15	Work Instructions of H-Q Curve Preparation	√	
16	River flow measurements	√	
17	Water Requirement		√
18	Basic Concept of Water Allocation	√	
19	Preparation of Priority water use & water license	√	
20	Water allocation management	√	
21	Preparation of Model of Water Allocation	√	
22	Training of Water Allocation		√
23	Preparation for Reservoir operation & Water Allocation	√	
24	Planning & Implementation for Controlling Daily water Allocation	√	
25	Technical Recommendation for Water Use	√	
26	Preparing Reservoir Operation & Water Allocation pattern	√	
27	Daily Water Allocation planning, implementation and controlling	√	
28	Procedure of Reservoir Daily Operation	√	
29	Water Volume Measurement Device Monitoring	√	
30	Operation of WR Infrastructure	√	
31	Basic Water Quality Management	√	
32	Method of sampling water & Its management	√	
33	Water Quality parameters	√	
34	Training of Water Quality		√
35	Monitoring of Water Quality Analysis	√	
36	Analysis of Water Quality	√	
37	Water Quality Monitoring & Action for Pollution	√	
38	Water Pollution Control	√	
39	Technical Recommendation on Waste Water Discharge	√	
40	Water Quality inspection	√	

41	Monitoring of waste water	✓	
42	Program of River Maintenance	✓	
43	River Maintenance Planning	✓	
44	Inventory of river data and river infrastructures	✓	
45	Engineering of River Environments	✓	
46	River Morphology	✓	
47	O&M of River & River Infrastructures	✓	
48	Training of O&M River		✓
49	O&M of River & River Infrastructures Cost	✓	
50	Survey and Analysis of hydraulic for river	✓	
51	Geological Survey		✓
52	Survey and Analysis for Soil Mechanic		✓
53	Survey and Analysis for Sediment	✓	
54	Analysis of river structures		✓
55	Survey and Analysis of Dam Monitoring	✓	
56	Planning & Implementation of Maintenance of WR Infrastructures	✓	
57	Design for Maintenance of WR Infrastructures	✓	
58	Calibration of Equipments	✓	
59	Survey, Monitoring & Evaluation of Dam safety Analysis	✓	
60	Survey and Monitoring Reservoir Sedimentation	✓	
61	Recommendation of River Corridor	✓	
62	Monitoring of the Dam Instrumentation	✓	
63	SOP of Flood Control	✓	
64	Flood Early-warning System	✓	
65	Planning for Flood Control	✓	
66	Identification for Flood Routing	✓	
67	Flood control for Sutami-Lahor Dam	✓	
68	Preparing Flood Alert Manual	✓	
69	Flood Control Realization Planning	✓	
70	General Procedure of Flood Control	✓	
71	Job Description of Provincial RBO		✓
72	Guideline of WR Institution for Provincial RBO		✓
73	Provincial & Basin WR Coordination Body		✓
74	Training of Institution of WR		✓
75	Public Participation on O&M of River		✓
76	Survey and Analysis of Ground Water		✓
77	Terrestrial Mapping for River		✓
78	Recommendation on Sand Mining	✓	
79	Preparation of Corporate Work Plan and Operational	✓	
80	Recommendation of Water Utilizing Permit	✓	

Figure PJTI-1 Flowchart of Establishing Manual Process

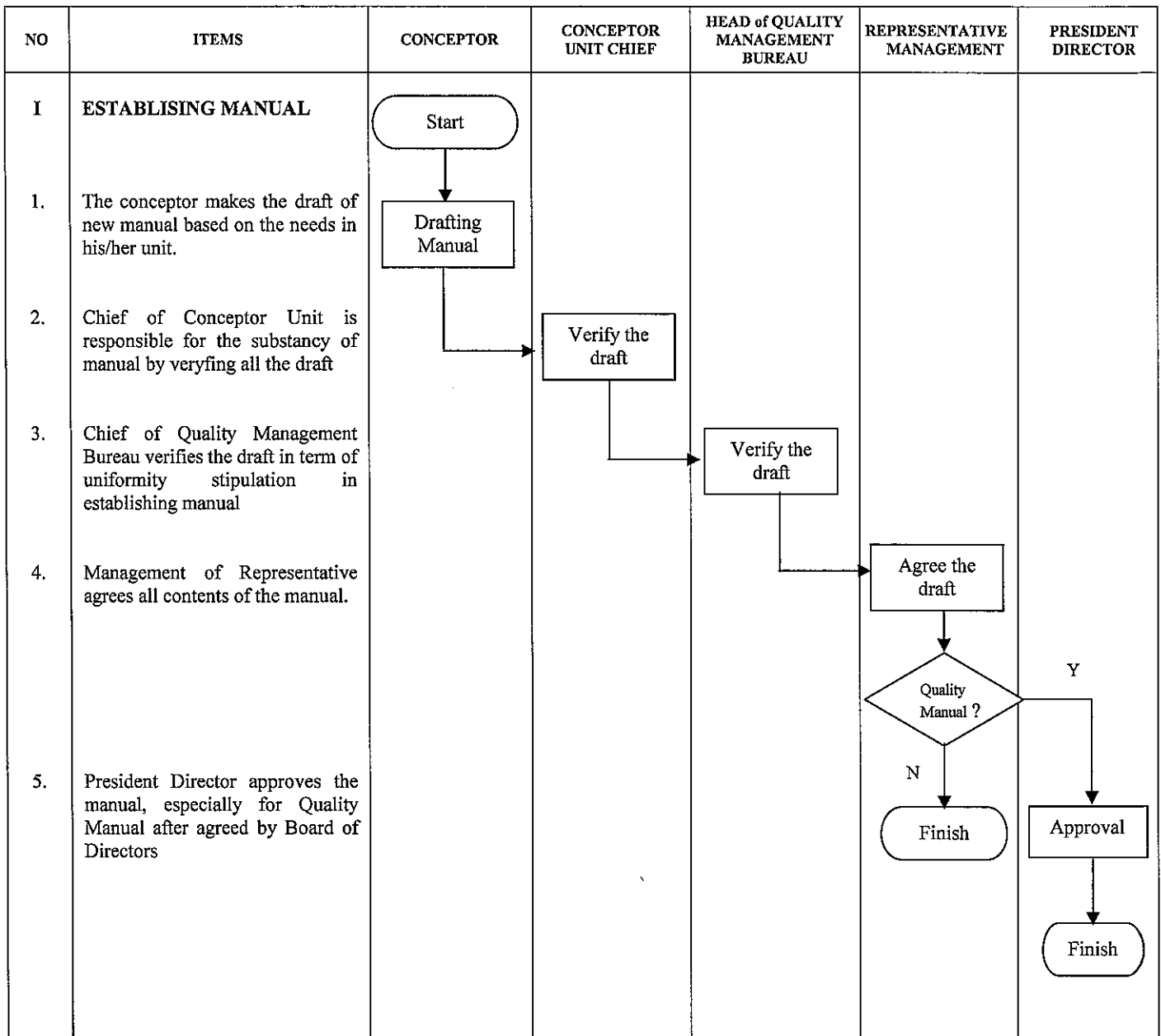


Figure PJTI-2 Flowchart of Revising Manual Process

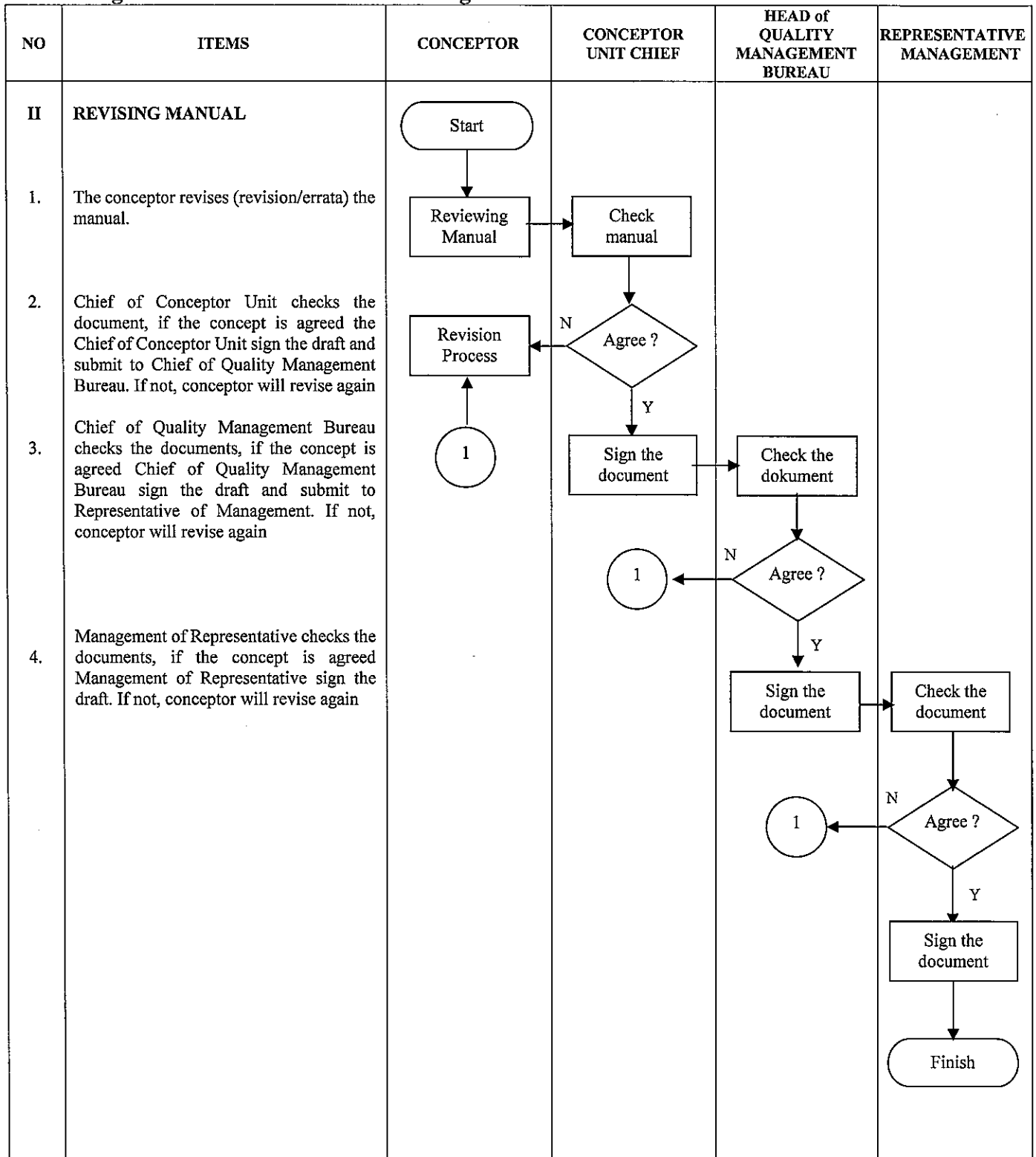


Table PJTII-1 IMPLEMENTATION BUDGETING

Year	Income (Rp)	Management Cost (Rp)	O&M Cost (Rp)
2004	163,398,834,149	120,650,857,320	24,887,548,144
2005	198,509,721,548	139,036,351,999	26,658,580,667
2006	219,038,838,111	146,251,110,900	35,659,194,056

Table PJTII-2 THE DATA OF PJT II EMPLOYEE

Table. PJTII-2.1 AGE of EMPLOYEE

YEAR OF BIRTH	Amount
1949	4 personnels
1950	0 personnels
1951	34 personnels
1952	105 personnels
1953	120 personnels
1954	123 personnels
1955	115 personnels
1956	117 personnels
1957	104 personnels
1958	82 personnels
1959	71 personnels
1960	72 personnels
1961	50 personnels
1962	27 personnels
1963	41 personnels
1964	27 personnels
1965	33 personnels
1966	27 personnels
1967	20 personnels
1968	21 personnels
1969	29 personnels
1970	22 personnels
1971	32 personnels
1972	27 personnels
1973	37 personnels
1974	34 personnels
1975	27 personnels
1976	30 personnels
1977	23 personnels
1978	15 personnels
1979	13 personnels
1980	8 personnels
1981	18 personnels
1982	10 personnels
1983	12 personnels
1984	14 personnels
1985	7 personnels
1986	6 personnels
1987	5 personnels
1988	0 personnels
TOTAL	1562 personnels

Table PJTII-2.2.Educational History

Educational	Amount
Master	27 personnels
Bachelor	187 personnels
Diploma	125 personnels
Senior High School	532 personnels
Junior High School	268 personnels
Basic Elementary	423 personnels
TOTAL	1562 personnels

Table PJTII-3 List of Guidelines/Manual on The Water Resources Management

No.	Document Number	Concerning
	Quality Manual	
1	PM No. 1/DU/PM/01	Quality Manual
	Operational Procedure	
1	PTL. 1/DU/PTL/10.01	Control of Documents
2	PTL. 1/DU/PTL/10.02	Management Review Meeting
3	PTL. 1/DU/PTL/10.03	Control Non Performance Process and Product
4	PTL. 1/DU/PTL/10.04	Corrective and Preventive Action
5	PTL. 1/DU/PTL/10.05	Control of Records
6	PTL. 1/DU/PTL/10.06	Internal Audit
7	PTL. 1/DU/PTL/10.07	Operation of Irrigation Network
8	PTL. 1/DU/PTL/10.08	Monitoring and Measurement of QMS Implementation
9	PTL. 1/DU/PTL/10.09	Maintenance of Water Resources Infrastructure
10	PTL. 1/DU/PTL/10.10	Company Work Plan and Budgeting Establishment
11	PTL. 1/DU/PTL/10.11	Educational and Training Employee
12	PTL. 1/DU/PTL/10.12	Planning of Product Realization
13	PTL. 1/DU/PTL/10.13	Contract Review of Raw Water Supply and Electric Power
14	PTL. 1/DU/PTL/10.15	Employee Recruitment
	Quality Plan	
1	RMO 1/DU/RMO/20.02	Raw Water Supply
2	RMO 1/DU/RMO/20.03	Water Supply for PT. sang Hyang Seri Company
3	RMO 1/DU/RMO/20.04	Water Supply for Industry and Regional Drinking Water Supply Company
4	RMO 1/DU/RMO/20.05	Water Supply for Industry and Regional Drinking Water Supply Company in Ir. H. Djuanda Dam
	Work Instruction	
1	PT 1/DT/PT/30.03	Water Intake Construction
2	PT 1/DT/PT/30.04	Data Analysis
3	PT 1/DT/PT/30.05	Calibration
4	PT 1/DT/PT/30.06	Theodolit Calibration
5	PT 1/DT/PT/30.07	Water Level Gauge Calibration
6	PT 1/DT/PT/30.08	Gate Opening Indicator Calibration
7	PT 1/DT/PT/30.09	Water Level Measurement with AWLR
8	PT 1/DT/PT/30.11	AWLR Calibration
9	PT 1/DL/PT/30.15	Irrigation Dewatering
10	PT 1/DT/PT/30.17	River Discharge Measurement
11	PT 1/DT/PT/30.21	Safety Dam Instrumentation Monitoring and Report
12	PT 1/DT/PT/30.22	Analysis and Evaluation of Industrial Water
13	PT 1/DT/PT/30.23	Dam Operation
	Work Instruction	
1	20/PP/40.01	Pejompongan Pumping Station
2	20/PP/40.02	Solving of Raw Water Pipe Lines Leakage
3	20/PP/40.03	Maintenance of Pejompongan and Pulo Gadung Raw Water Pipe Lines
4	20/PP/40.04	Instalation Operation of Pulo Gadung Raw Water Equipment
5	20/PP/40.05	Intake Operation of Buaran Raw Water Equipment
6	30/PP/40.02	Leuweung Seureuh Main Offtake Operation
7	30/PP/40.03	O & M East Tarum Electric Pumping Station
8	30/PP/40.04	O & M West Tarum Hidrolic Pump
9	30/PP/40.05	O & M Curug Weir

No.	Document Number	Concerning
10	30/PP/40.06	O & M Diesel 140 KV of Curug Weir
11	30/PP/40.07	O & M Pipe Lines and Pump
12	30/PP/40.08	O & M Trash Rack
13	30/PP/40.09	Curug Minihydro Power Plan Operation
14	50/PP/40.01	Hollow Jet Valve Operation
15	50/PP/40.05	Monitoring of Internal Movement of Dam Body
16	50/PP/40.06	Monitoring of Eksternal Movement of Dam Body
17	50/PP/40.07	Monitoring of Reservoir Evaporation
18	50/PP/40.08	Monitoring of Pore water Presure
19	50/PP/40.09	Monitoring of Seepage and Leakage of Dam Body
20	50/PP/40.10	Monitoring of Reservoir Waterlevel
	Support Documents	
1	Law of The Republic of Indonesia Number 7 of 2004	Water Resources
2	Law No. 23 of 1997	Environmental Management
3	Government Regulation Number 27 of 1999	Water Environmental Impact Analysis
4	Government Regulation Number 94 of 1999	Establishment of PJT II
5	Government Regulation Number 82 of 2001	Water Quality Management and Pollution Control
6	Governor Decree Number 521/Kep.1065-Binprod/2005	Padi Planting Schedule
7	Minister of Public Works Decree Number 141/KPTS/M/2006	Tariff of Water for Industry
8	West Java Governor Decree Number 39 of 1999	Raw Water Allocation and Water Quality Standards of Citarum River with Fork in West Java
9	West Java Governor Decree Number 614/0 SK.834-Huk/1997	The Implementation Committee for Coordination of Citarum River with Water Arrangement
10	West Java Governor Decree Number 6 of 1999	Quality Standards of Industrial Waste Water in West Java
11	West Java Governor Decree Number 611/ Kep.81/Huk/1987	Formation of West Java Province Irrigation Committee
12	Minister of Settlement and Regional Infrastructure Decree Number 18/KPTS/M/ 2000	Operation Manual of PJT II
13	The Decree of Ministry of State Ownwd Company Number KEP-101/MBU/2002 Date June 4, 2002	The Arrangement of State Owned Company RKAP
14	President Director Decree Number 1/436/ KPTS/2005	Planning of Water Provison and Water use for Irrigation, drinking water, industry, plantation and flushing
15	President Director Decree Number 1/560/ KPTS/2005	Establishment of Water Allocation and Water Resources Management Team
16	President Director Decree Number 1/524/ KPTS/2005	Organization of PJT II
17	Board of Directors Decree Numbner 1/79/KPTS/2006 Jo. Number 1/331/KPTS/ 2006	Competency Standard
18	PJT II Director Decree Number 1/103/KPTS 2006	Member of Coordination of Water Resources Management Team
19	PJT II Director Decree Number 1/97/KPTS/ 2006	Member of Evaluation of Water Resources Management Team
20	Declared by President of RI April 28, 2005	National Movement for Water Safety Partnership

付属資料4 収集資料リスト

付属資料4 収集資料リスト

No.	資料名	入手先	内容
F- 1	DARTAR BALAI BESAR & BALAI KECIL DIT. SDA	河川研究センター	Balai Besar/Balai のパンフレット
F- 2	MODUL DISMINIS PEDOMAN TEKNIK BIDANG SUMBER DAYA AIR TAHUN 2006	河川研究センター	水資源領域の技術に関する普及教材一覧
F- 3	LIST OF INFORMATION AVAILABLE ON WATER RESOURCES GEOGRAPHICAL INFORMATION SYSTEM	河川研究センター	水資源に関する既存のGIS情報の一覧
F- 4	PROCES PERUMUSAN DAN PENETAPAN STANDAR, PEDOMAN, DAN MANUAL	河川研究センター	基準、マニュアル類の作成のプロセス
F- 5	PEDOMAN TEKNIS OPERASI BENDUNG	PJT II	ダム操作技術手順(例)
F- 6	LIST OF TECHNICAL GUIDELINES	河川研究センター	要請書添付の80のガイドラインに対応する実際のガイドラインの名称、コードNo.
F- 7	List of equipment in new building of DUWRMT	ソロ、河川研究所	建設中のDUWRMTの建物に入る什器類のリスト (LCD Projector、スクリーン、白板を含む)
F- 8	新建屋 (DUWRMT) の配置図、完成予想図、工程、等一式	ソロ、河川研究所	河川地域の基準と範囲についての公共事業省規則
F- 9	PERATURAN MENTERI PEKERJAAN UMUM NOMOR:11A/PRT/M/2006 TENANG KRITERIA DAN PENETAPAN	ソロ、河川研究所	河川地域の基準と範囲についての公共事業省規則
F- 10	STRUCTUR ORGANISASI BALAI SUNGAI SURAKARTA	ソロ、河川研究所	ソロ河川事務所の組織図
F- 11	BENDUNGAN SUTAMI	スタミ堰	スタミ堰の概要
F- 12	BALAI BESAR WILAYAH BENGAWAN SOLO Home pageから抜粋	ソロ、河川研究所	主な実施項目、管理範囲、Polaの管理・計画のポイント、等
F- 13	BALAI BESAR WILAYAH SUNGAI CILIWUNG-CISADANE	ソロ、河川研究所	組織図、BBWSについて、
F- 14	PERUSAHAAN UMUM (PERUM) JASA TIRTA II	PJT II	機器類のモニタリングスケジュール (例)
F- 15	RESEARCH CENTRE FOR WATER RESOURCES (RCWR)	河川研究センター	河川研究所のパンフレット
F- 16	Database NSPM Bangunan Air T.A.-2004	河川研究センター	水施設 (?) のデータベース (CD)
F- 17	RESEARCH CENTRE FOR WATER RESOURCES (RCWR)	河川研究センター	VCD
F- 18	DIRECTORY NSCM (Norms, Standards, Guidelines and Manual) WATER RESOURCES CHAPTER	河川研究センター	水資源管理に関する標準、基準、ガイドライン、マニュアルの一覧
F- 19	CURG WIER(1968)	CIRUG堰	CIRUG堰の概要
F- 20	LAPARAN TENGGAHAN SISTEM INFORMASI GEOGRAFIS SUMBER DAYA AIR (SIG-SDA) BIDANG SUNGAI Tahun Anggaran 2007, BALAI SUNGAI	ソロ、河川研究所	河川領域での水資源地理情報システムに関する報告書
F- 21	TEKNOLOGI SUMBER DAYA AIR, BALAI SUGAI PUSLITBANG SUBER DAYA AIR, Vol. 1, No.2, April 2003	ソロ、河川研究所	水資源技術に関する論文集
F- 22	TEKNOLOGI SUMBER DAYA AIR, BALAI SUGAI PUSLITBANG SUBER DAYA AIR, Vol. 1, No.3, Nopember 2003	ソロ、河川研究所	水資源技術に関する論文集
F- 23	TEKNOLOGI SUMBER DAYA AIR, BALAI SUGAI PUSLITBANG SUBER DAYA AIR, Vol. 2, No.1, Juni 2004	ソロ、河川研究所	水資源技術に関する論文集
F- 24	TEKNOLOGI SUMBER DAYA AIR, BALAI SUGAI PUSLITBANG SUBER DAYA AIR, Vol. 2, No.2, Mei 2005	ソロ、河川研究所	水資源技術に関する論文集

付属資料4 収集資料リスト

No.	資料名	入手先	内容
F- 25	TEKNOLOGI SUMBER DAYA AIR, BALAI SUGAI PUSLITBANG SUBER DAYA AIR, Vol. 3, No.1, Februari 2006	ソロ、河川研究所	水資源技術に関する論文集
F- 26	TEKNOLOGI SUMBER DAYA AIR, BALAI SUGAI PUSLITBANG SUBER DAYA AIR, Vol. 3, No.1, Februari 2006	ソロ、河川研究所	水資源技術に関する論文集
F- 27	Indicative Results Framework for the Balai Bssar Of the Citarum Basin		
F- 28	Key Stakeholders Matrix		
F- 29	Organization chart of BBWS Serayu- Opak		A2版
F- 30	BALAI BESAR WILAYAH SUNGAI H.P. OF PU		
F- 31	C. PEMBANGIAN URUSAN PEMERINTAHAN BIDANG PEKERJAAN UMUM	BBWS Serayu-Opak	
F- 32	Vocanic Disaster Mitigation Urgent Disaster Reguction Project for Mt. Merapi, Progo River Basin (IP-524)		
F- 33	SKEMA IRIGASILAHAN PANTAI KABUPATEN KULON PROGC		
F- 34	PENANGGULANGAN BANJIR PEGELOLAAN BENCANA BANJIR & TEBING SUNGAI LONGSOR DALAM SISTEM PERUNDANG-UNDANGAN		
F- 35	MT. MERAPI ACTIVITY AND THE COUNTERMEASURE		
F- 36	MOUTA MERAPI DEBRIS CONTROL PROJECT		
F- 37	BRINBIN パンフレット		
F- 38	SISTEM IRIGASI LAHAN PANTAI PROPINSI DAERAH ISTIMEWA YOGYAKARTA		
F- 39	PEMBANGUNAN BENDUNGAN TELAGA TUNJUNG Di Kabupaten Tabanan		
F- 40	DECREASING WATER LEVEL'S PALASARI DAM		
F- 41	LAW OF THE REPUBLIC OF INDONESIA NUMBER 7 OF 2004 REGARDING WATER RESOURCES		
F- 42	ELUCIDATION ON LAW OF THE REPUBLIC OF INDONESIA No.7/2004 REGARDING WATER RESOURCES		
F- 43	SOSIALISASI UPT/BALAI DIREKTORAT JENDERAL SUMBER DAYA AIR (TAHUN 2007)		ATTACHMENTにRBOの設立規定がある。公共事業省令 No.12/PRT/2006, No.13/PRT/2006
F- 44	DISSEMINATION OF UPT (TECHNICAL IMPLEMENTING UNIT)/ CENTER OF THE DIRECTORATE GENERAL OF WATER RESOURCES (YEAR 2007)		F-43英訳版

付属資料4 収集資料リスト

No.	資料名	入手先	内容
F- 45	PERATURAN MENTERI PEKERJAAN UMUM NOMOR:26/PRT/M/2006 TENANG PERUBAHAN PERATURAN MENTERI PEKERJAAN UMUM NOMOR:12/PRT/M/2006 TENTANG SUSUNAN ORGANISASI DAN TATA KERJA BALAI BESAR WILAYAH SUNGAI DAN PERATURAN MENTERI PEKERJAAN UMUM NOMOR:13/PRT/M/2006 TENTANG SUSUNAN ORGANISASI DAN TATA KERJA BALAI WILAYAH SUNGAI	DGWR Mr. Imam	Balai Besarの設置省令（修正版）、英訳中
F- 46	ii) Peraturan Menteri Keuangan RI (DEPARTEMEN KEUNAGAN RI) (インドネシア財務大臣令：インドネシア財務省) - Nomor 07/PMK.02/2006 Persyaratan Administratif Penetapan PK BLU - Nomor 08/PMK.02/2006 Pengadaan Barang/Jasa BLU - Nomor 09/PMK.02/2006 Dewan Pengawas BLU - Nomor 10/PMK.02/2006 Remuerasi BLU - Nomor 66/PMK.02/2006 RBA dan DIPA BLU	DGWR Mr. Imam	BLU関連、英訳中
F- 47	PERATURAN PEMERINTAH REPUBLIK INDONESIA NOMOR 23 TAHUN 2005 TENTANG PENGELOLAAN KEUANGAN BADAN LAYANAN UMUM	DGWR Mr. Imam	BLU関連、英訳中
F- 48	List of Guidelines for JICA NARBO's	DGWR Mr. Imam	ガイドライン整備案

