

---

*ANNEX*

---

AN.1

LOCATION MAP OF STRUCTURAL MEASURES IN 24 VILLAGES

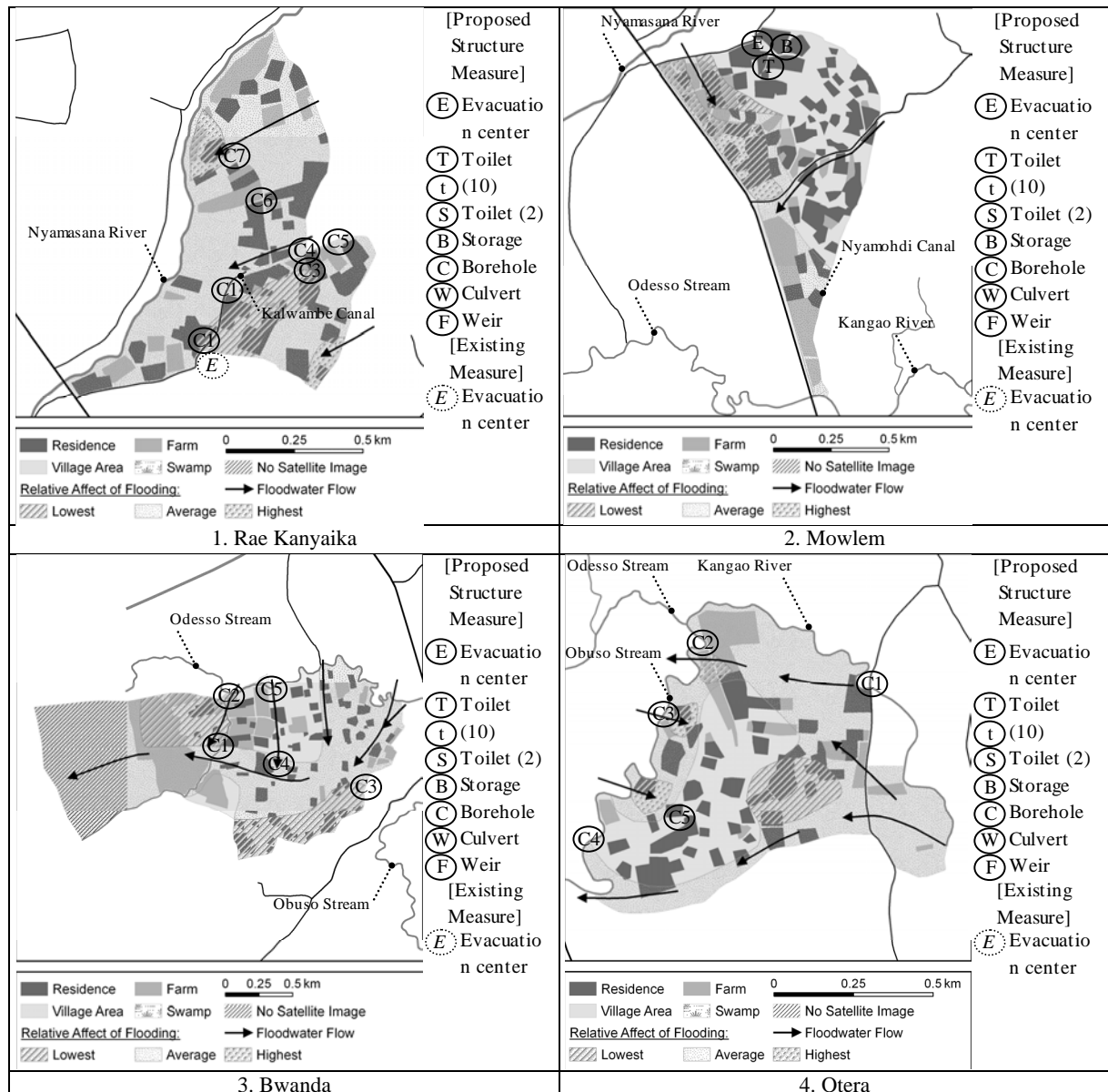
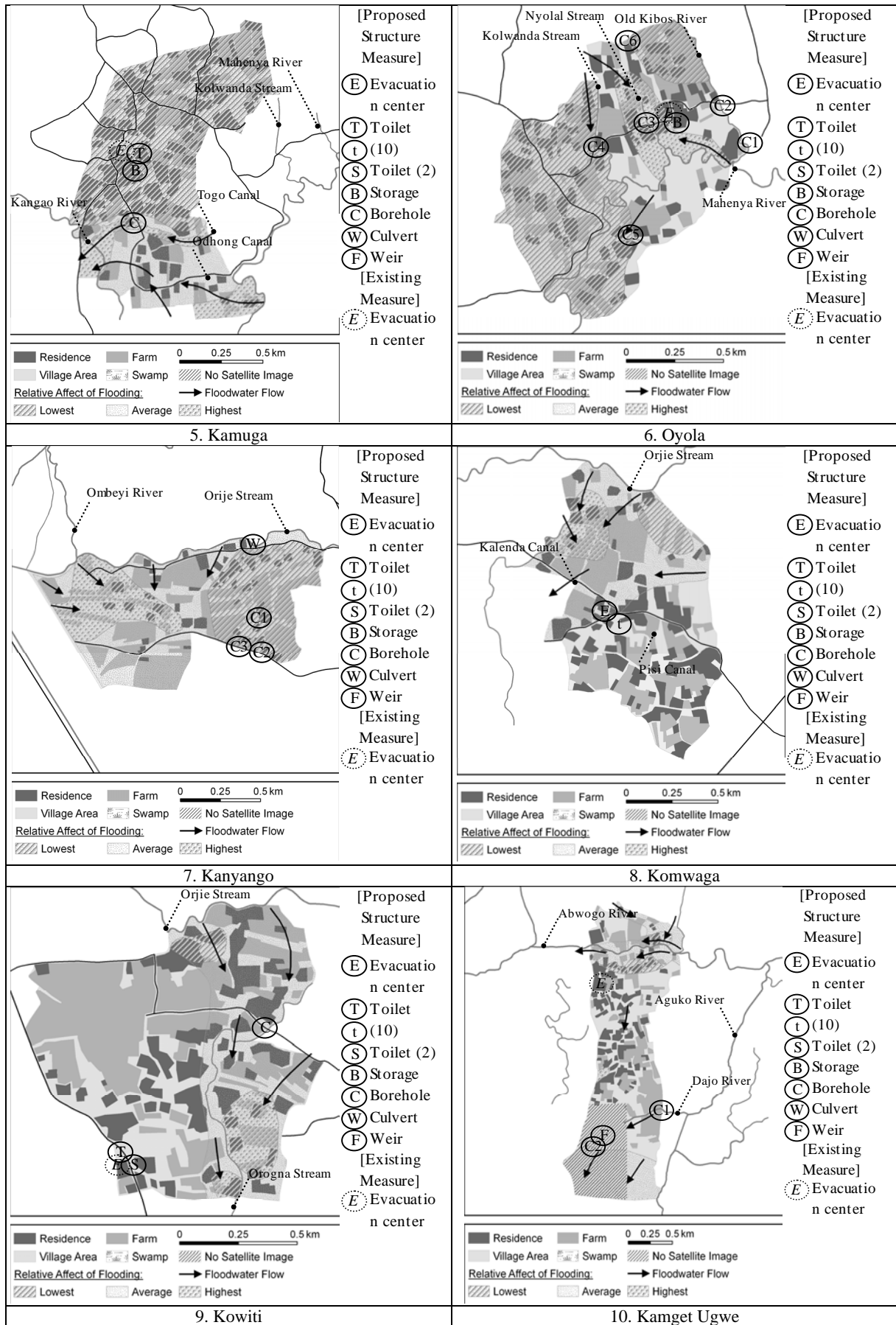


Figure 1.1 Location Map of Structural Measures (1/5)



**Figure 1.2 Location Map of Structural Measures (2/5)**

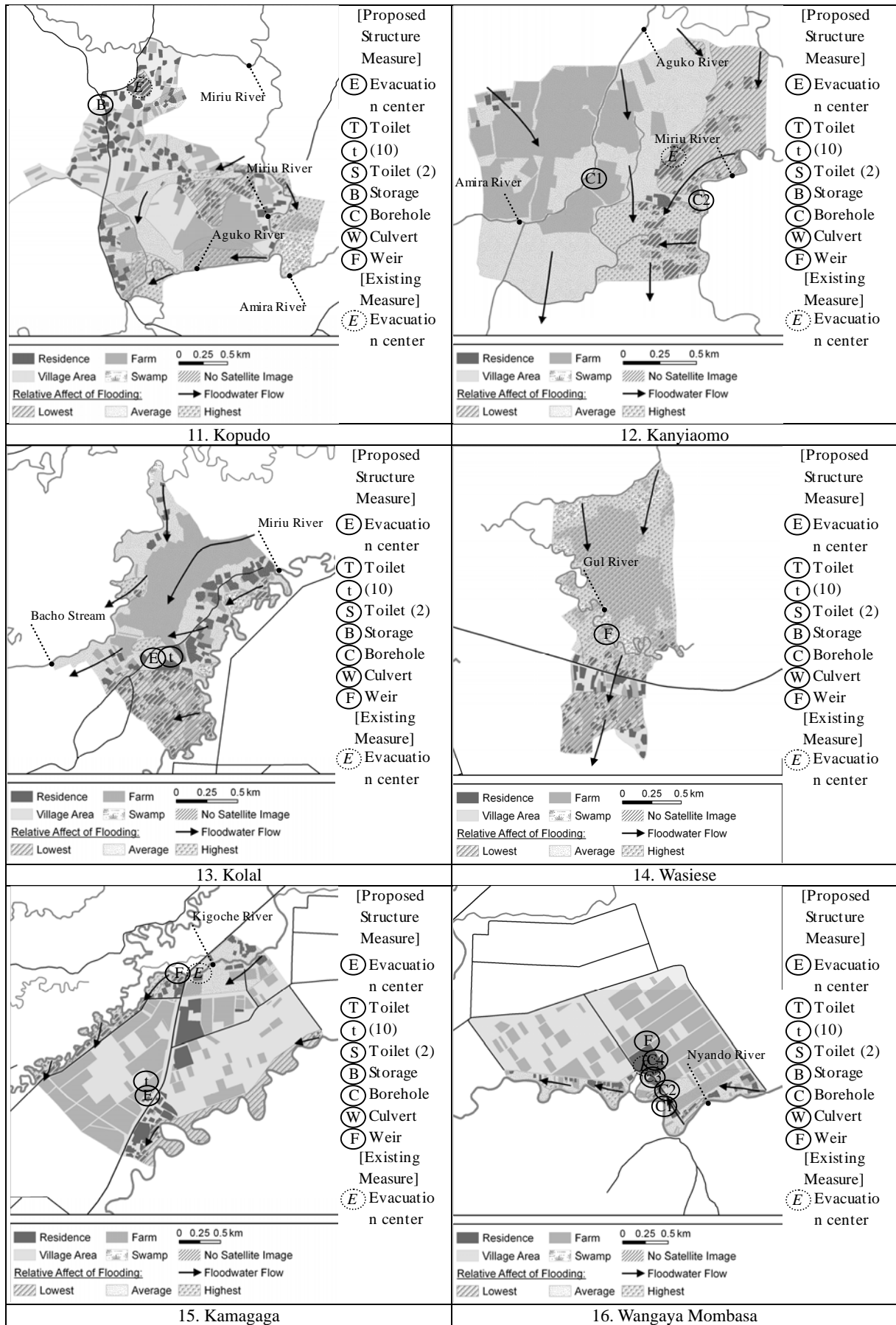


Figure 1.3 Location Map of Structural Measures (3/5)

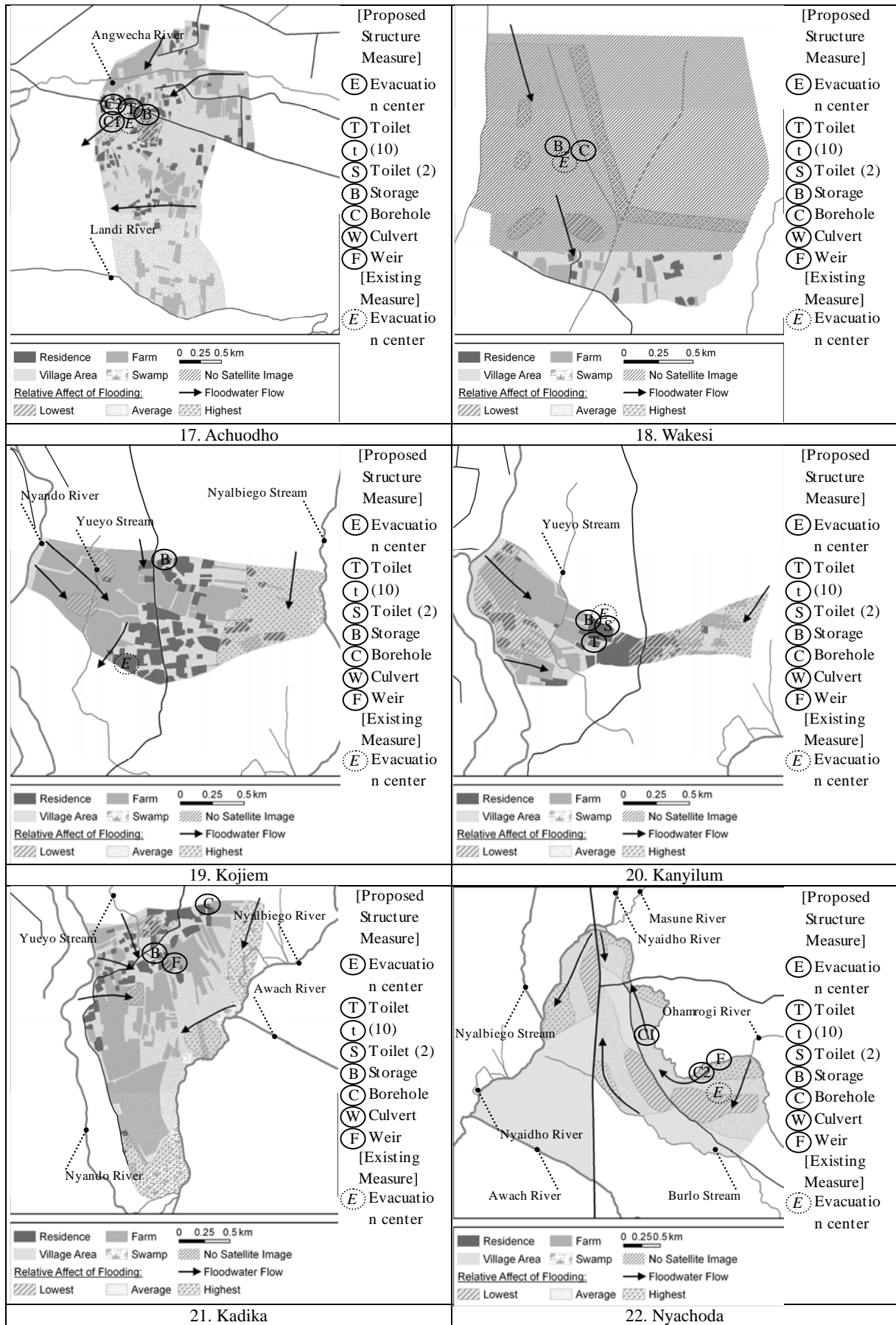


Figure 1.4 Location Map of Structural Measures (4/5)

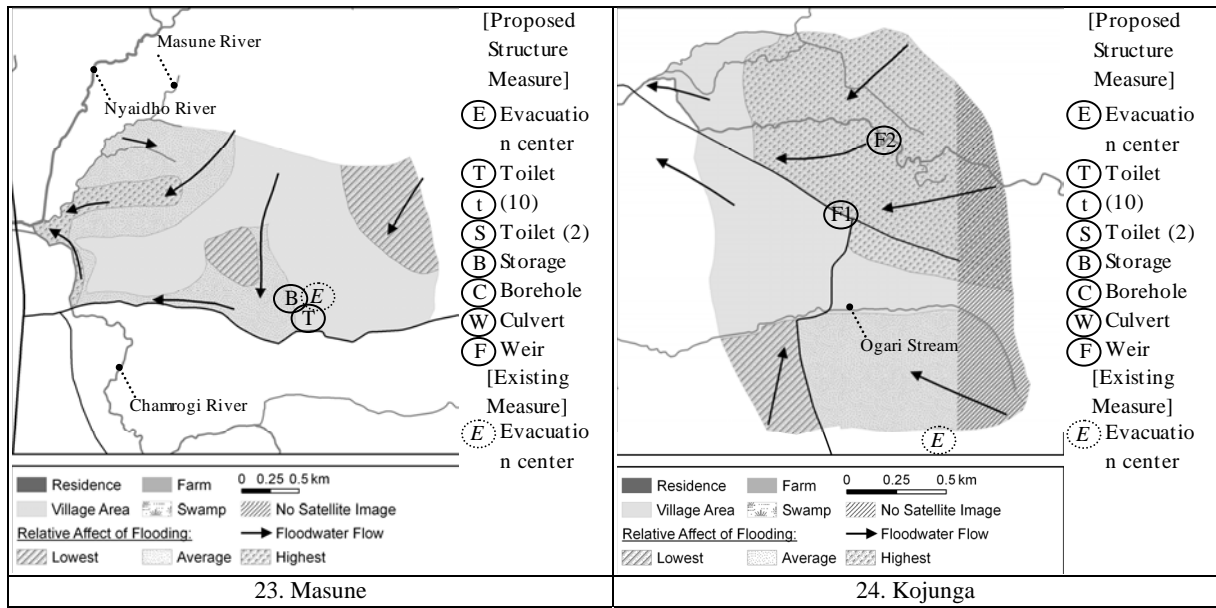


Figure 1.5 Location Map of Structural Measures (5/5)

**AN.2            OUTLINE DESIGN DRAWINGS OF ARCHITECTURAL WORKS**

Figure 2.1 Evacuation Center: Plan and Elevation ..... AN-7  
Figure 2.2 Evacuation Center: Elevation..... AN -8  
Figure 2.3 Toilet (10 compartments): Plan and Elevation ..... AN -9  
Figure 2.4 Toilet (2 compartments): Plan and Elevation ..... AN -10  
Figure 2.5 Storage Facility: Plan and Elevation ..... AN -11  
Figure 2.6 Borehole: Plan and Section of Hand Pump Apron ..... AN -12  
Figure 2.7 Borehole: Location Map and Typical Section ..... AN -13

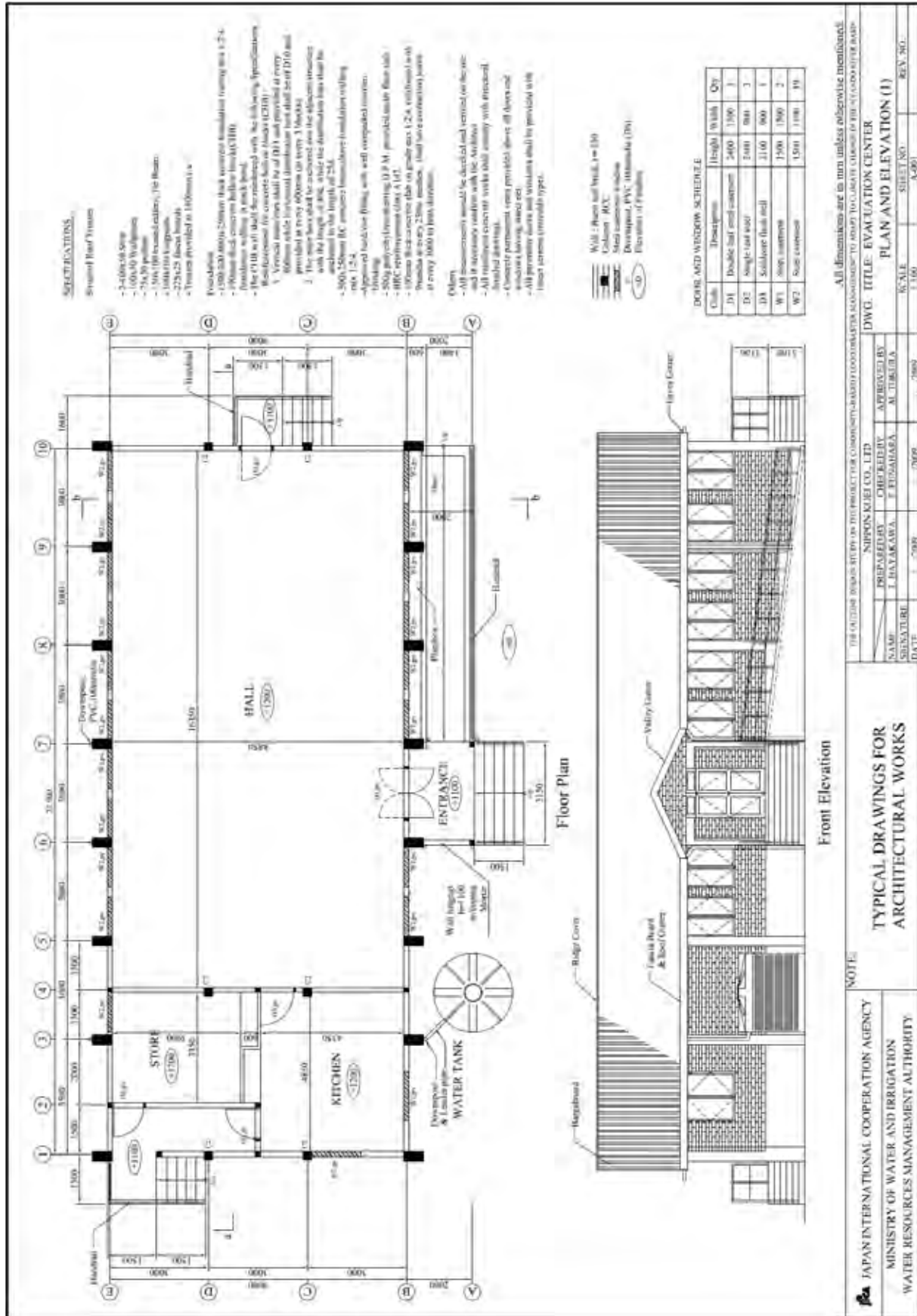
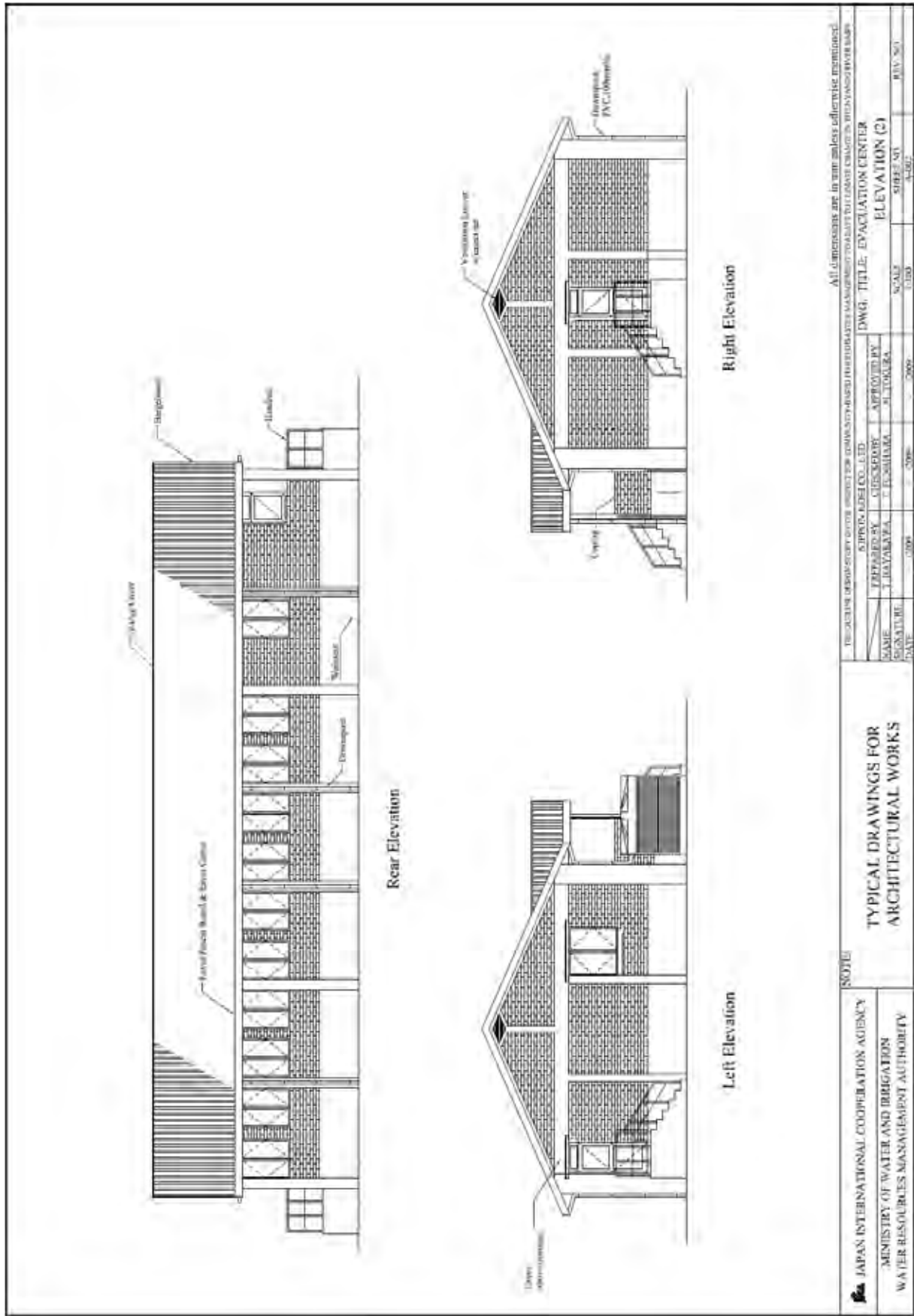


Figure 2.1 Evacuation Center: Plan and Elevation





All dimensions are in mm unless otherwise mentioned.

JAPAN INTERNATIONAL COOPERATION AGENCY MINISTRY OF WATER AND IRRIGATION WATER RESOURCES MANAGEMENT AUTHORITY		SCOTT TYPICAL DRAWINGS FOR ARCHITECTURAL WORKS		PROJECT: DESIGN-SECTOR STUDY FOR COMMUNITY-BASED PARTICIPATIVE MANAGEMENT FOR RIVER CHANNELS TO LEAVE CHANGE IN RIVER CHANNELS DWG. TITLE: EVACUATION CENTER ELEVATION (2)	
PREPARED BY T. HAYAKAWA	CHECKED BY T. FUSHIYAMA	APPROVED BY H. TOKURA	SCALE 1/100	SHEET NO. 4-002	REV. NO. -
SIGNATURE DATE	DATE	DATE	DATE	DATE	DATE

Figure 2.2 Evacuation Center: Elevation

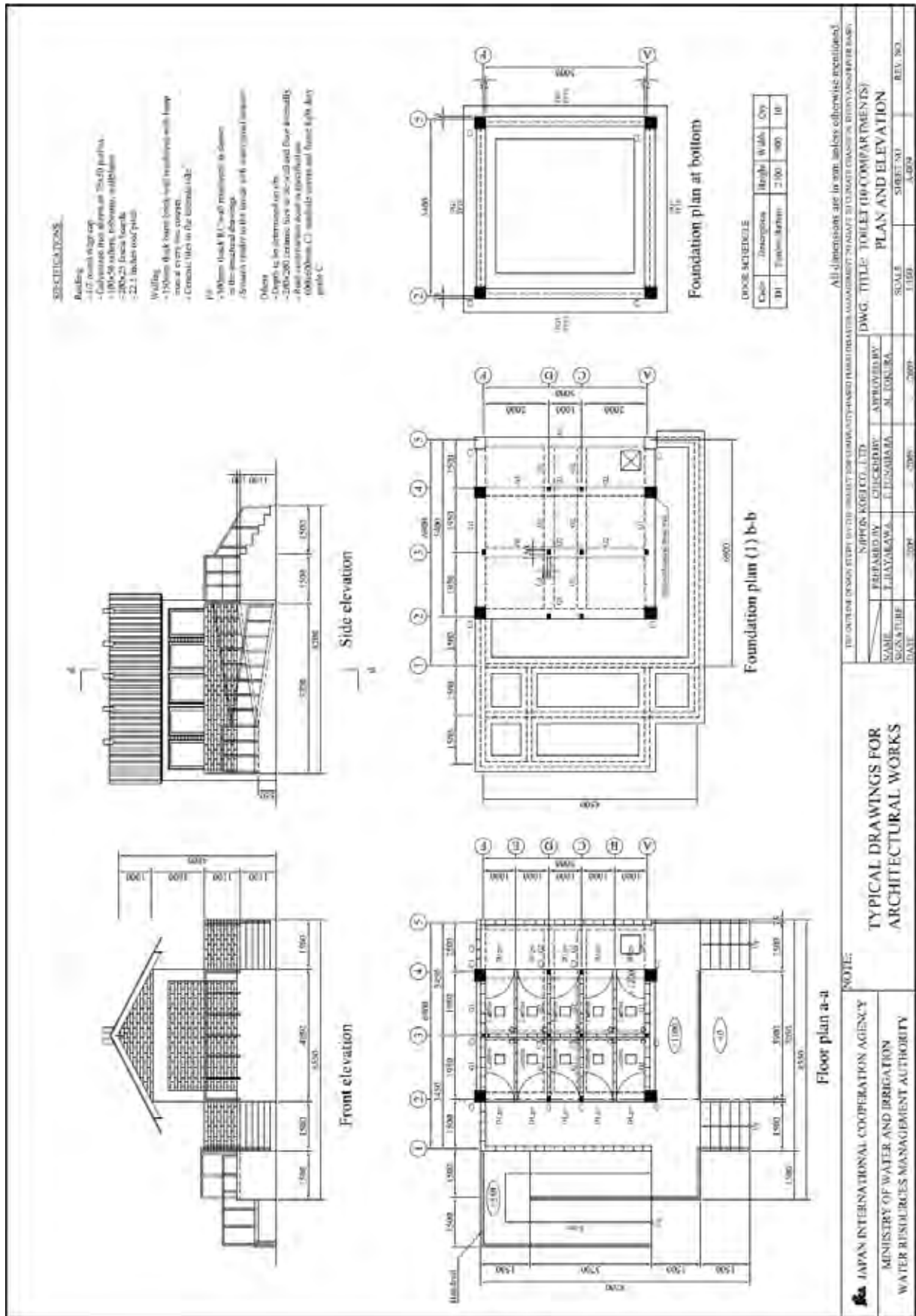


Figure 2.3 Toilet (10 compartments): Plan and Elevation

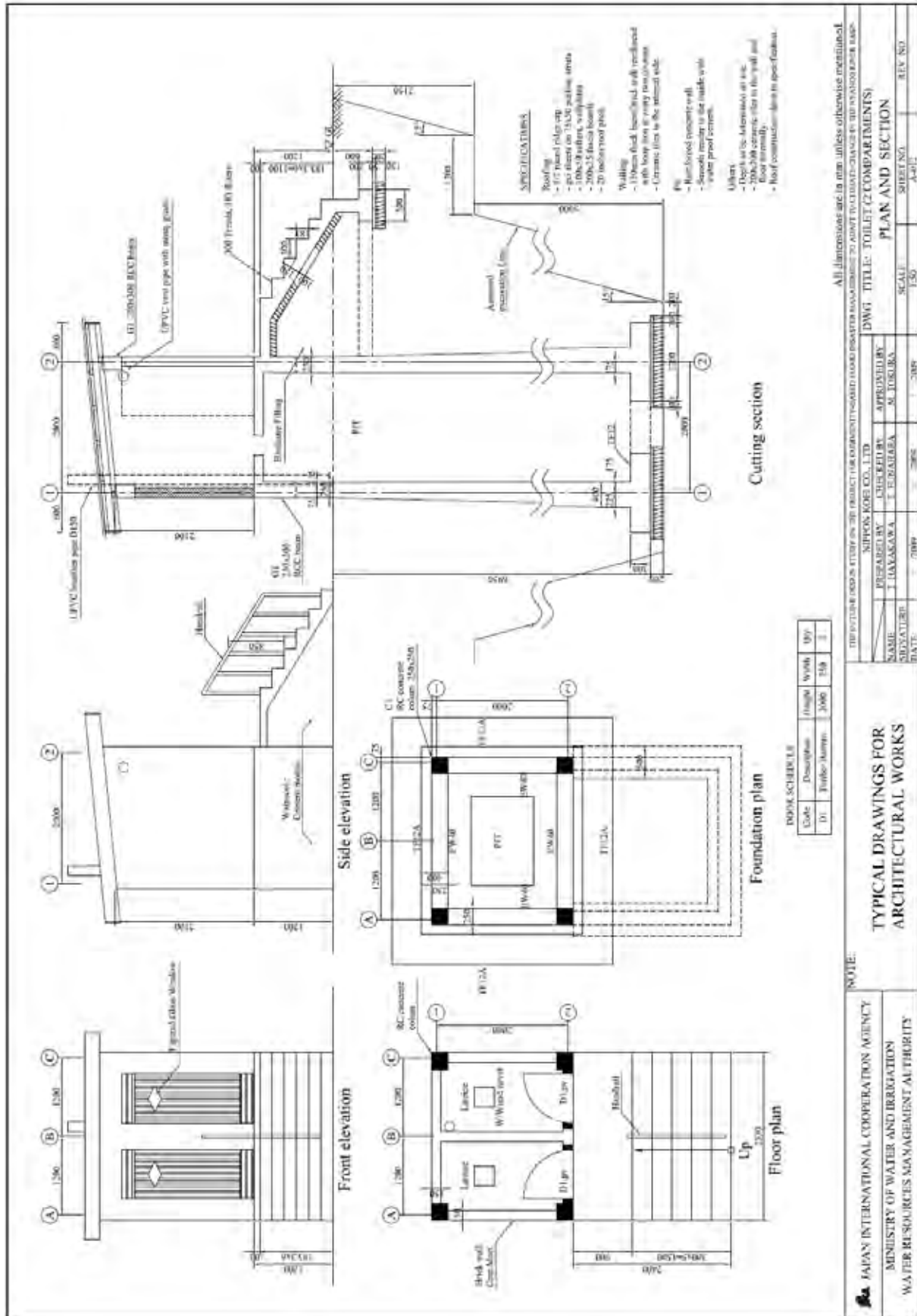


Figure 2.4 Toilet (2 compartments): Plan and Elevation

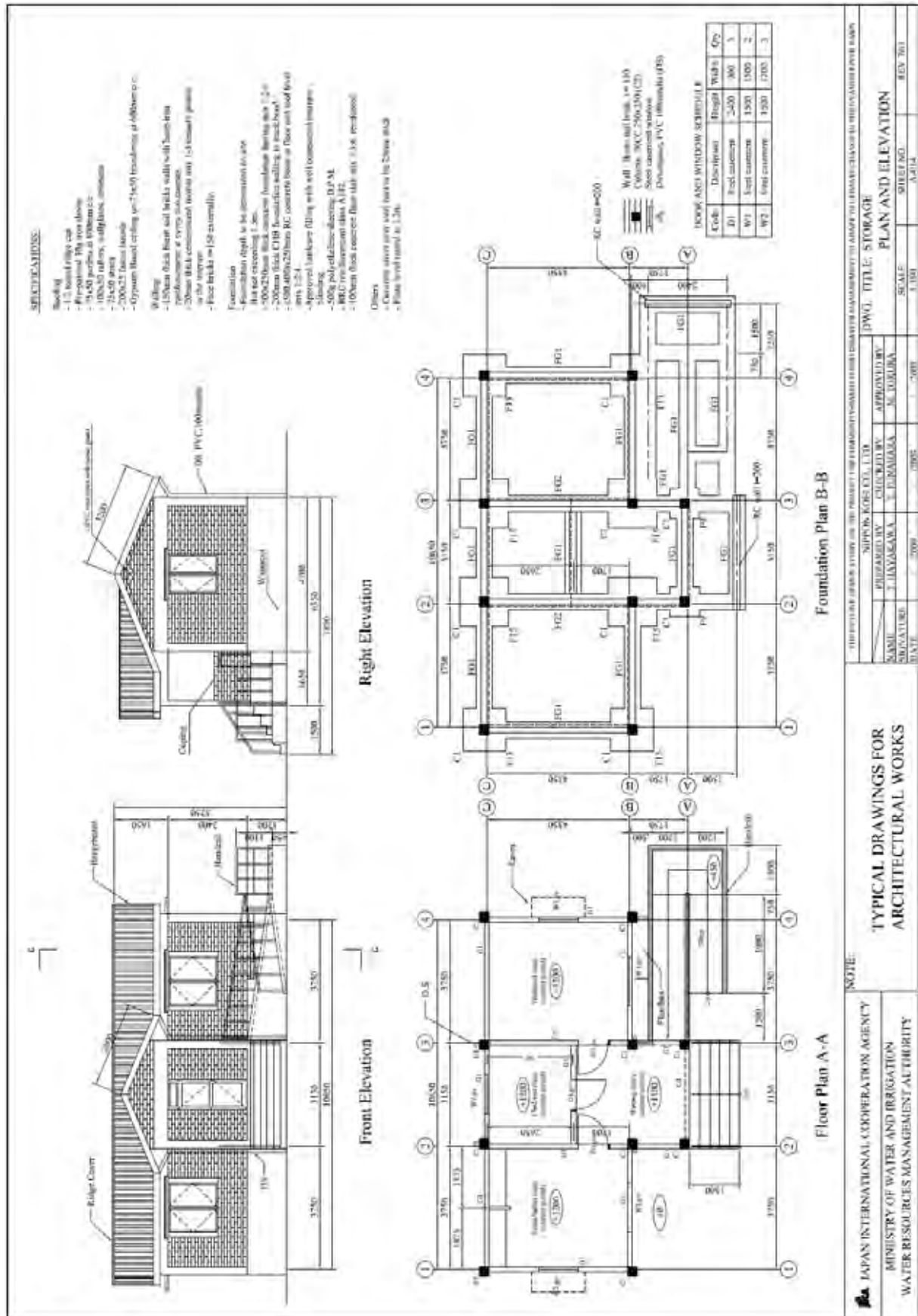


Figure 2.5 Storage Facility: Plan and Elevation

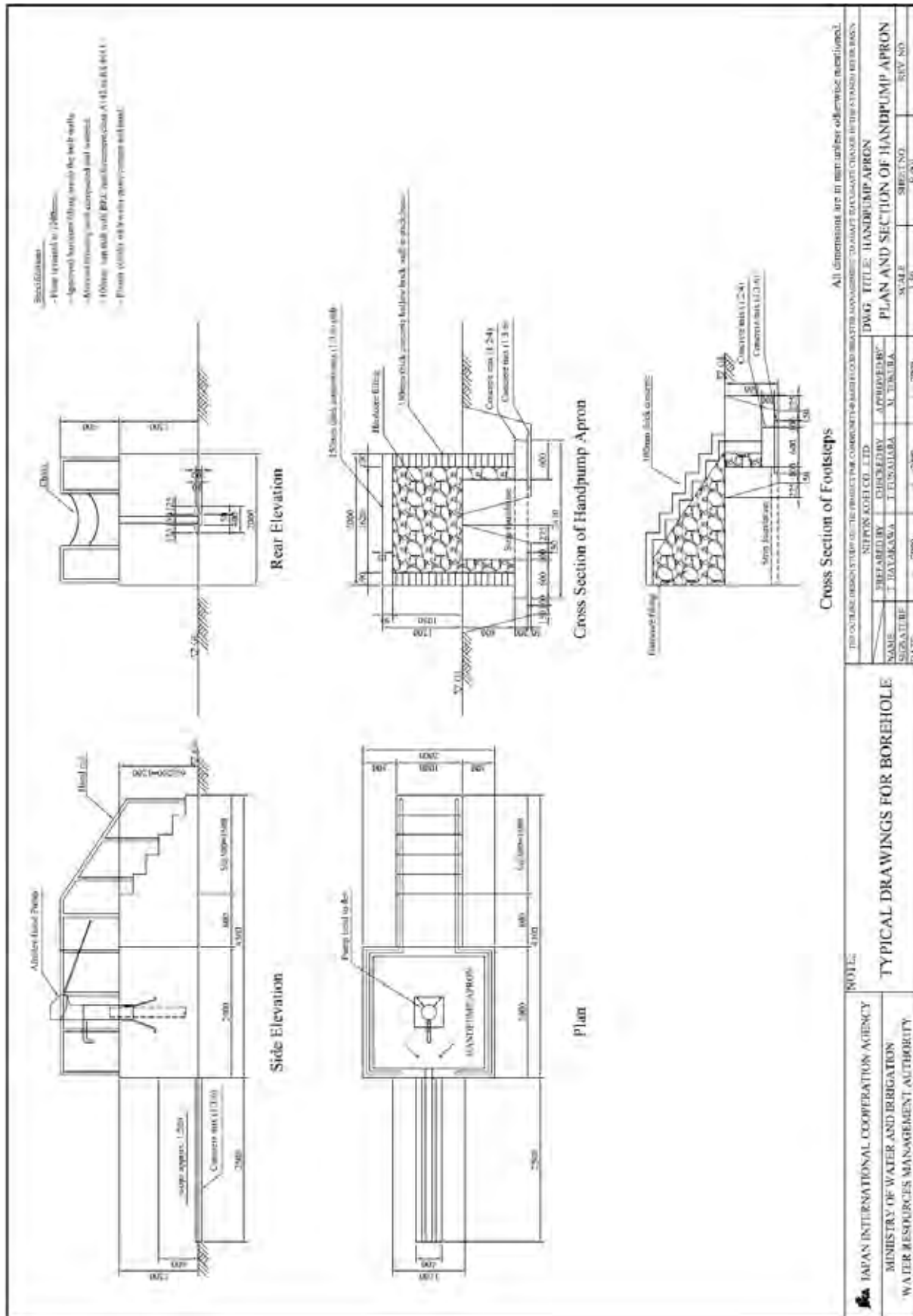
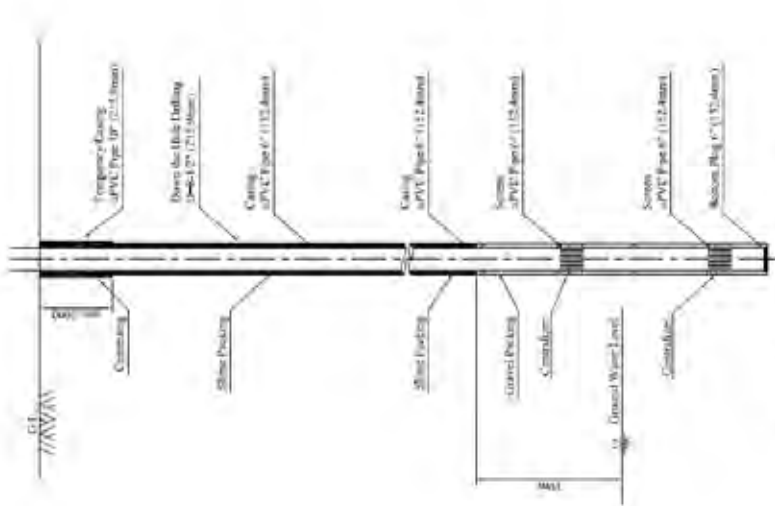


Figure 2.6 Borehole: Plan and Section of Hand Pump Apron



Standard Concept of Borehole Structure S-4.10

No.	District	Community	Proposed Site	Longitude	Latitude	Borehole Depth (M) - (ft)
1	Kisumu	Mwai Jiri	Mwai Kariakoo Primary School	0°12'10" S	34°46'54" E	70
2	Karungu	Karungu	Olonyo Primary School	0°07'04" S	34°46'53" E	80
3	Oyala	Oyala	Oyala Primary School	0°07'04" S	34°46'24" E	100
4	Myamba	Wangari Maathai	Chimbor Primary School	0°12'17" S	34°52'20" E	80
5	Achambani	Achambani	Achambani Primary School	0°06'34" S	34°53'45" E	60
6	Wakari	Wakari	Ogwallo Legoo Mbiri Church	0°02'00" S	34°55'02" E	60
7	Kariakoo	Kariakoo	Agwale Primary School	0°12'09" S	34°56'11" E	80
8	Karibia	Karibia	Wirothi Land	0°12'07" S	34°56'21" E	70
9	Muariki	Muariki	Agwari Primary School	0°12'10" S	34°56'20" E	70

Note: Borehole depths are estimated results.

Table of Description



Locations of Proposed Site

All dimensions are in mm unless otherwise mentioned.

<p><b>JICA</b> JAPAN INTERNATIONAL COOPERATION AGENCY          MINISTRY OF WATER AND IRRIGATION          WATER RESOURCES MANAGEMENT AUTHORITY</p>		<p>NOTE:  <b>TYPICAL DRAWINGS FOR BOREHOLE</b></p>		<p>DATE: 2009-09-2009          SCALE: 1:1000          SHEET NO: 3/4/01          REV: 01</p>	
<p>PREPARED BY: T. UEMURA          CHECKED BY: T. UEMURA          DRAWN BY: M. OKADA</p>		<p>APPROVED BY:          M. OKADA</p>		<p>PROJECT TITLE: BOREHOLE  <b>LOCATION MAP AND TYPICAL SECTION</b></p>	

THIS DRAWING DESIGN BELONGS TO THE PROJECT FOR COOPERATION IN WATER RESOURCES MANAGEMENT TO ADAPT TO CLIMATE CHANGE IN HIGHLANDS RIVER BASIN. AMENKO SCIENTIFIC CO., LTD.

Figure 2.7 Borehole: Location Map and Typical Section