
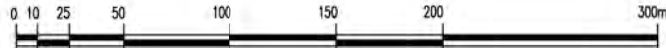

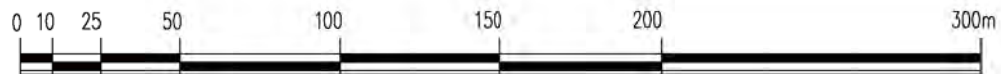
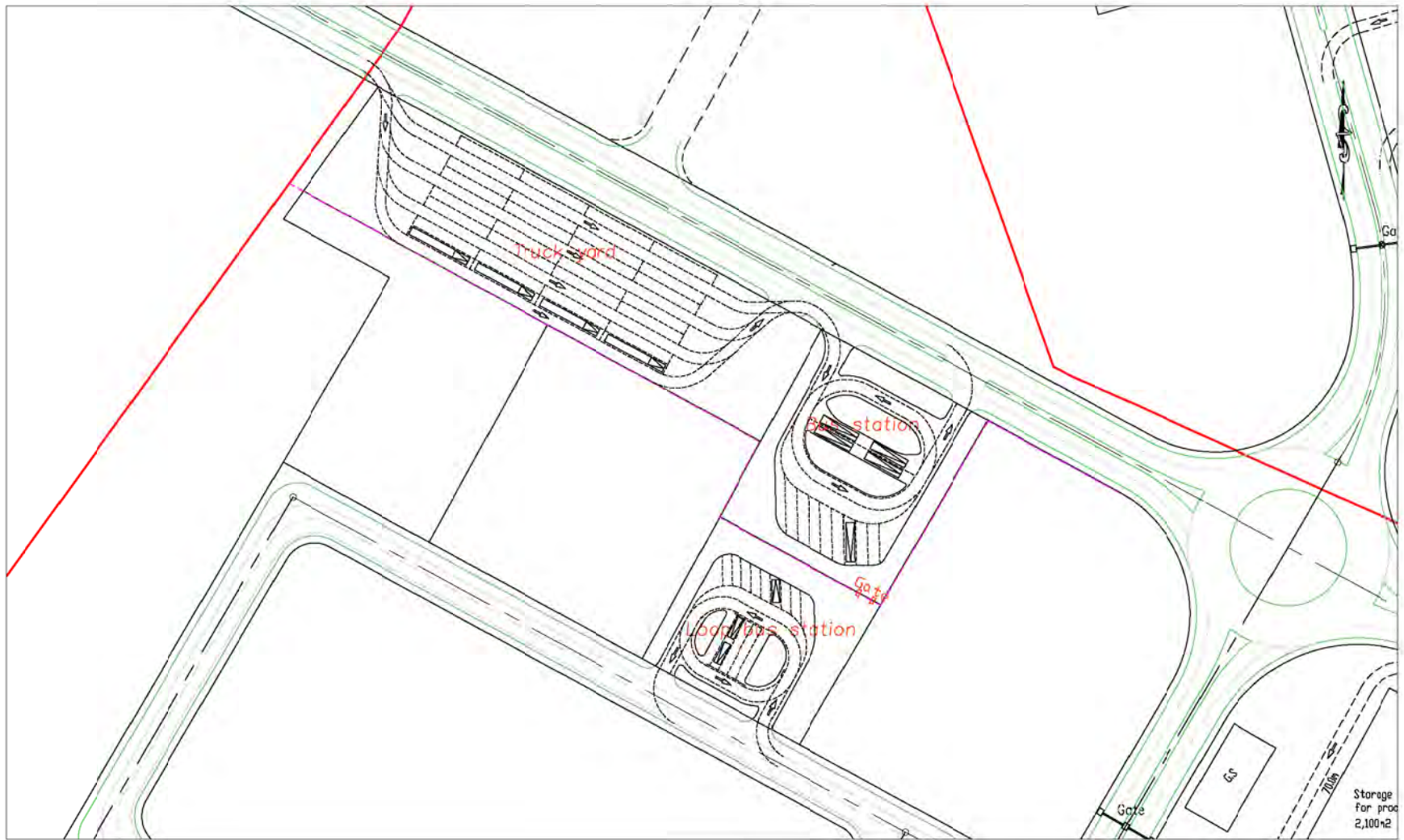

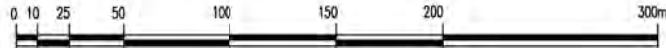
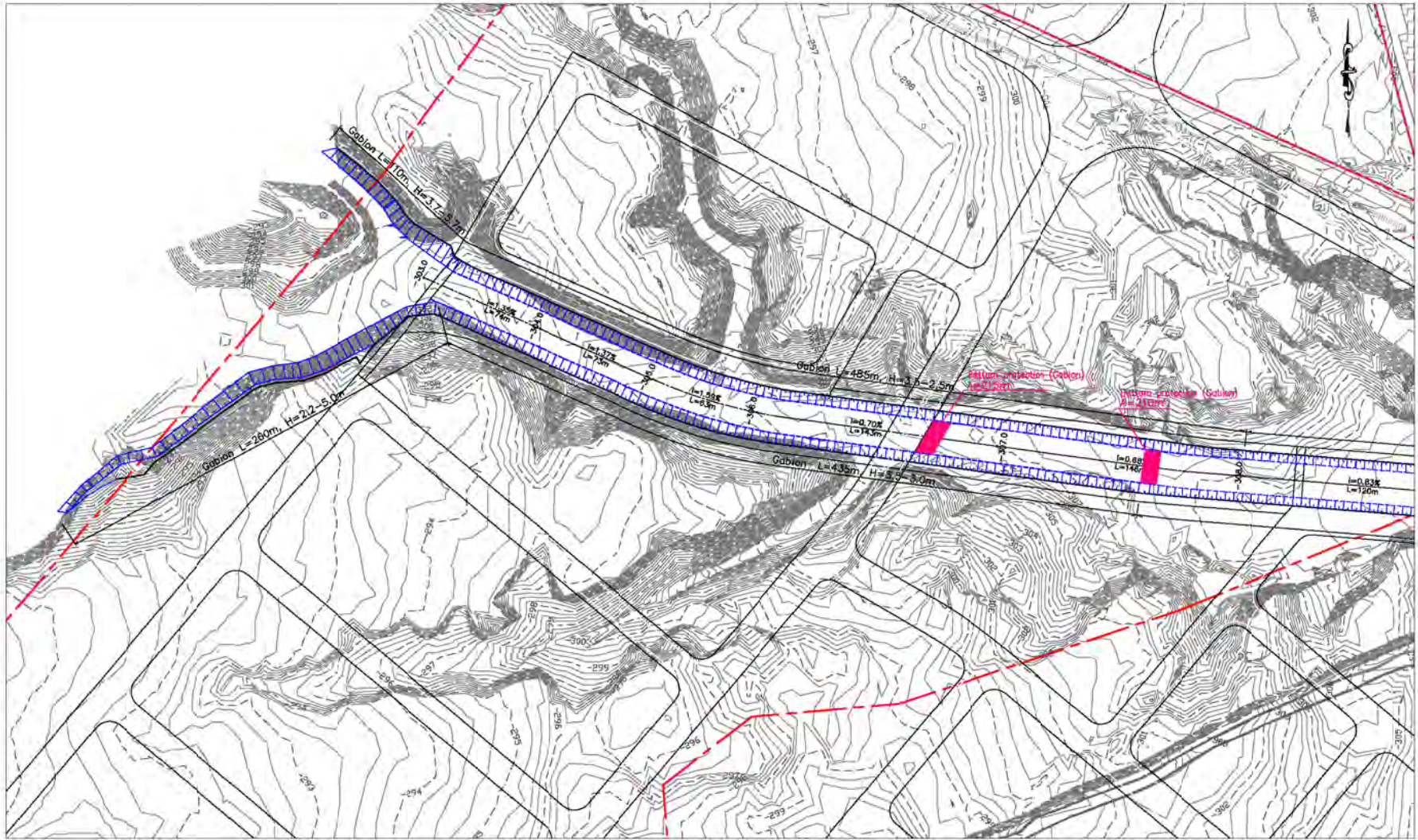
 JAPAN INTERNATIONAL COOPERATION AGENCY THE FEASIBILITY STUDY ON AGRO-INDUSTRIAL PARK DEVELOPMENT IN THE JORDAN RIVER RIFT VALLEY	
Drawing Title:	Distribution Area of Stage I Plan
Prepared by:	KRI INTERNATIONAL CORP.  NIPPON KOGI CO., LTD.
	Drawing No: 228 Date: November 2008



 JAPAN INTERNATIONAL COOPERATION AGENCY THE FEASIBILITY STUDY ON AGRO-INDUSTRIAL PARK DEVELOPMENT IN THE JORDAN RIVER RIFT VALLEY	
Drawing Title:	Distribution Area of Stage II and III Plan
Prepared by:	KRI INTERNATIONAL CORP.  NIPPON KOEI CO., LTD.
Drawing No:	229
Date:	November 2008



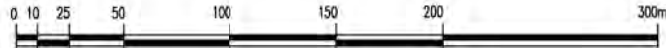
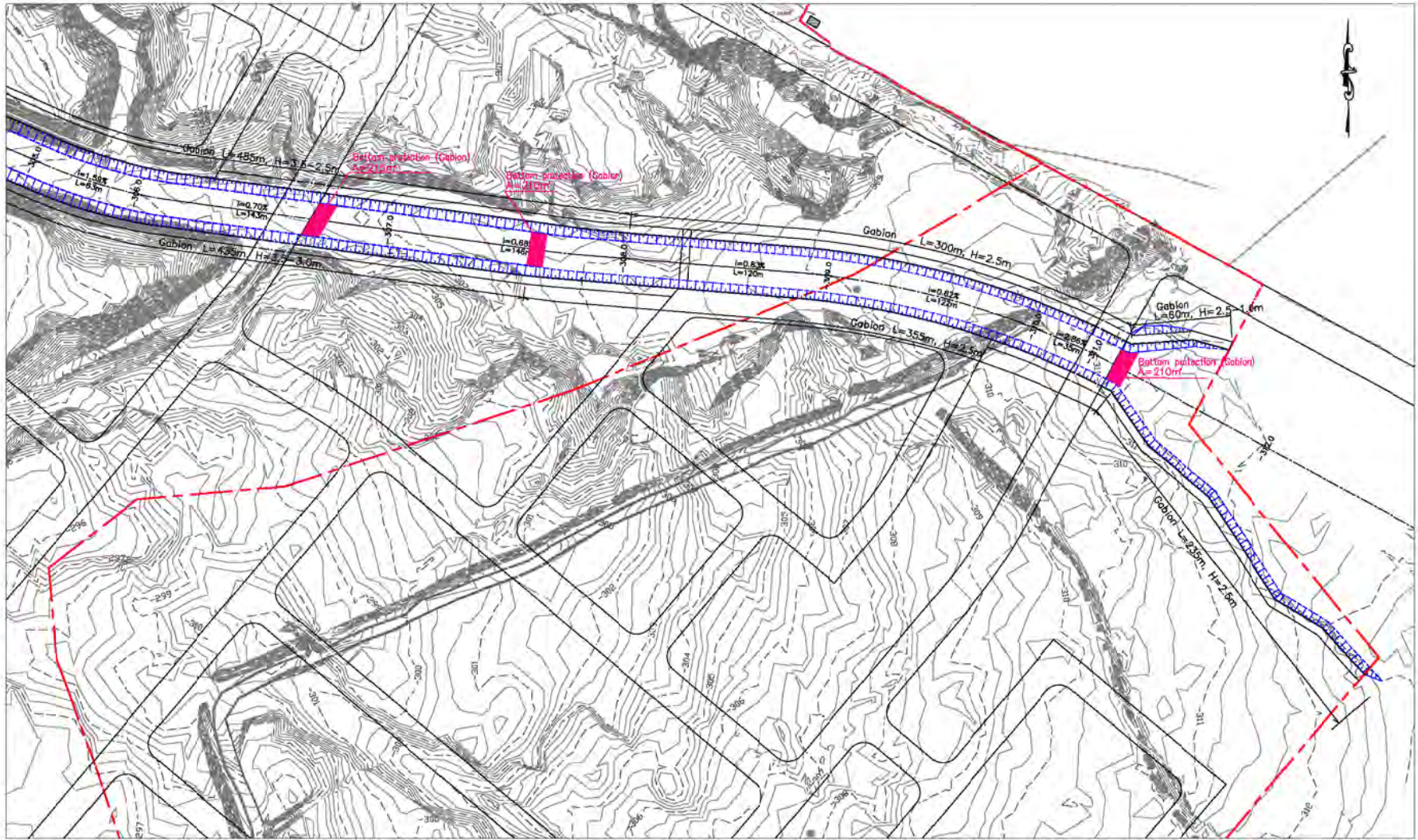
 JAPAN INTERNATIONAL COOPERATION AGENCY THE FEASIBILITY STUDY ON AGRO-INDUSTRIAL PARK DEVELOPMENT IN THE JORDAN RIVER RIFT VALLEY	
Drawing Title:	Bus Station & Truck Yard Plan
Prepared by:	KRI INTERNATIONAL CORP. Drawing No: 230 NIPPON KOEI CO., LTD. Date: November 2008



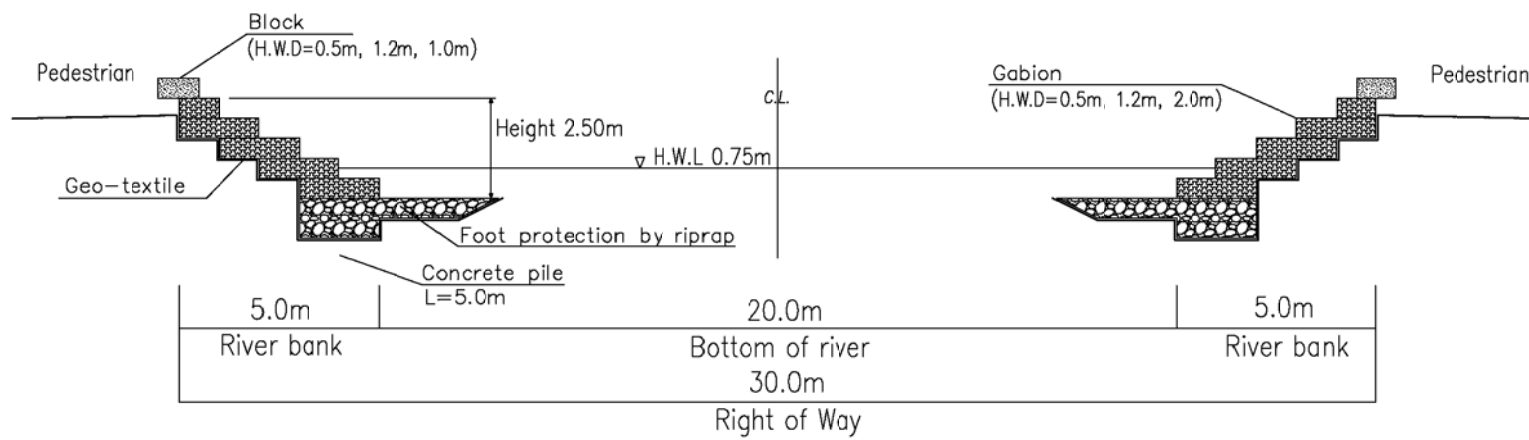
JAPAN INTERNATIONAL COOPERATION AGENCY
 THE FEASIBILITY STUDY ON AGRO-INDUSTRIAL PARK
 DEVELOPMENT
 IN THE JORDAN RIVER RIFT VALLEY

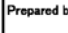
Drawing Title: **River Improvement of Stage II Plan**

Prepared by: KRI INTERNATIONAL CORP. Drawing No: **241**
 NIPPON KOEI CO., LTD. Date: **November 2008**



 JAPAN INTERNATIONAL COOPERATION AGENCY THE FEASIBILITY STUDY ON AGRO-INDUSTRIAL PARK DEVELOPMENT IN THE JORDAN RIVER RIFT VALLEY	
Drawing Title:	River Improvement of Stage III Plan
Prepared by:	KRI INTERNATIONAL CORP. Drawing No: 242  NIPPON KOEI CO., LTD. Date: November 2008






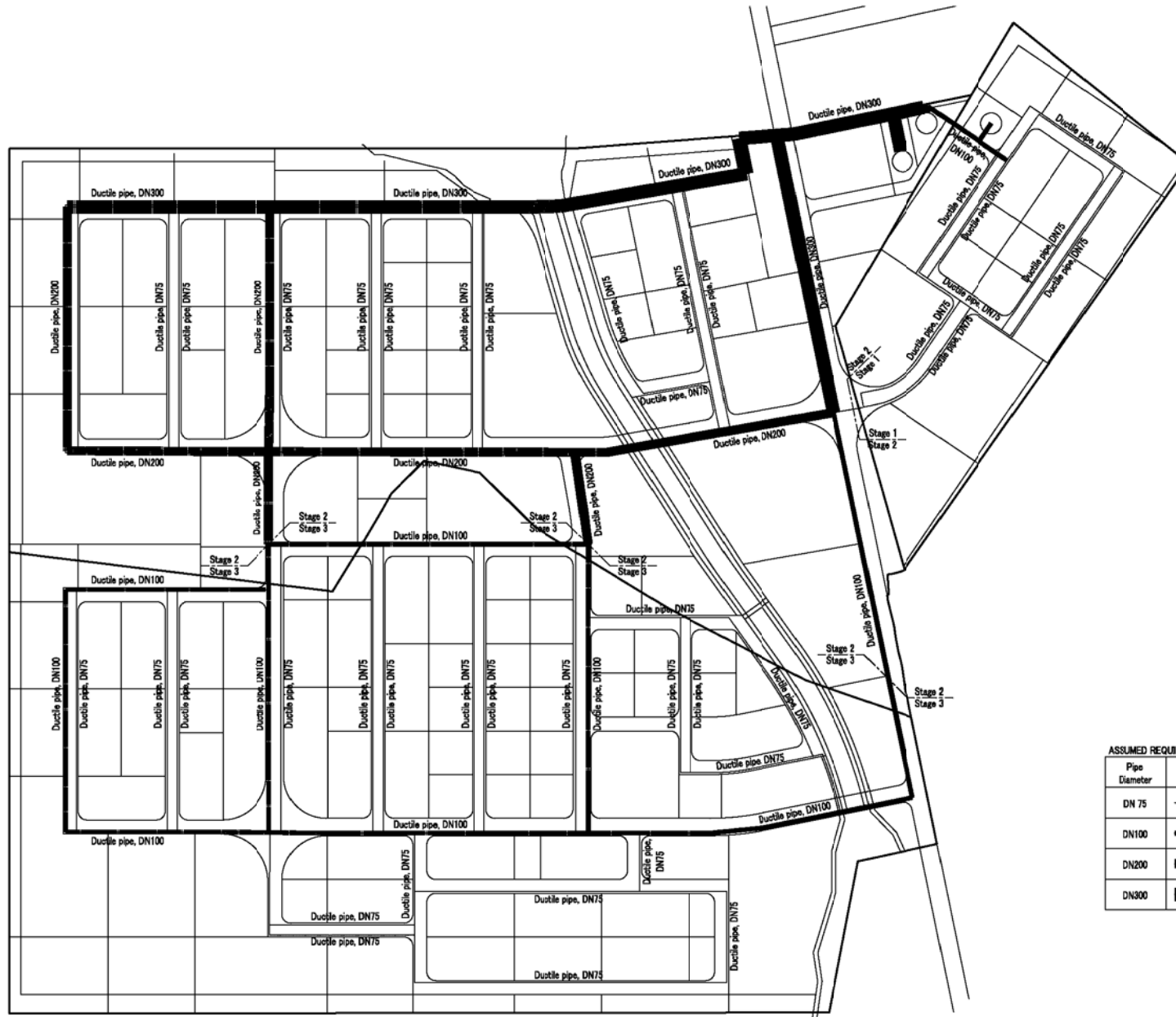
 JAPAN INTERNATIONAL COOPERATION AGENCY THE FEASIBILITY STUDY ON AGRO-INDUSTRIAL PARK DEVELOPMENT IN THE JORDAN RIVER RIFT VALLEY		
Drawing Title:		River Improvement Typical Cross Section
Prepared by:		Drawing No: 243
 KRI INTERNATIONAL CORP.		 NIPPON KOEI CO., LTD.
		Date: November 2008



- Legend
- Stage I
 - Stage II
 - Stage III
 - 33/0.4kV transformer

0 25 50 100 150 200 250 300 400 500m

 JAPAN INTERNATIONAL COOPERATION AGENCY THE FEASIBILITY STUDY ON AGRO-INDUSTRIAL PARK DEVELOPMENT IN THE JORDAN RIVER RIFT VALLEY		
Drawing Title:		Power Distribution Line Plan
Prepared by:	 KRI INTERNATIONAL CORP.  NIPPON KOEI CO., LTD.	Drawing No: 251 Date: November 2008



ASSUMED REQUIRED LENGTH

Pipe Diameter	Symbol	Stage 1	Stage 2	Sub-total (+2)	Stage 3	Total (+1+2+3)
DN 75	-----	1,490	3,130	4,320	5,260	9,880
DN100	■■■■■■	120	160	280	2,610	3,090
DN200	■■■■■■■	0	1,660	1,660	0	1,660
DN300	■■■■■■■	0	1,430	1,430	0	1,430

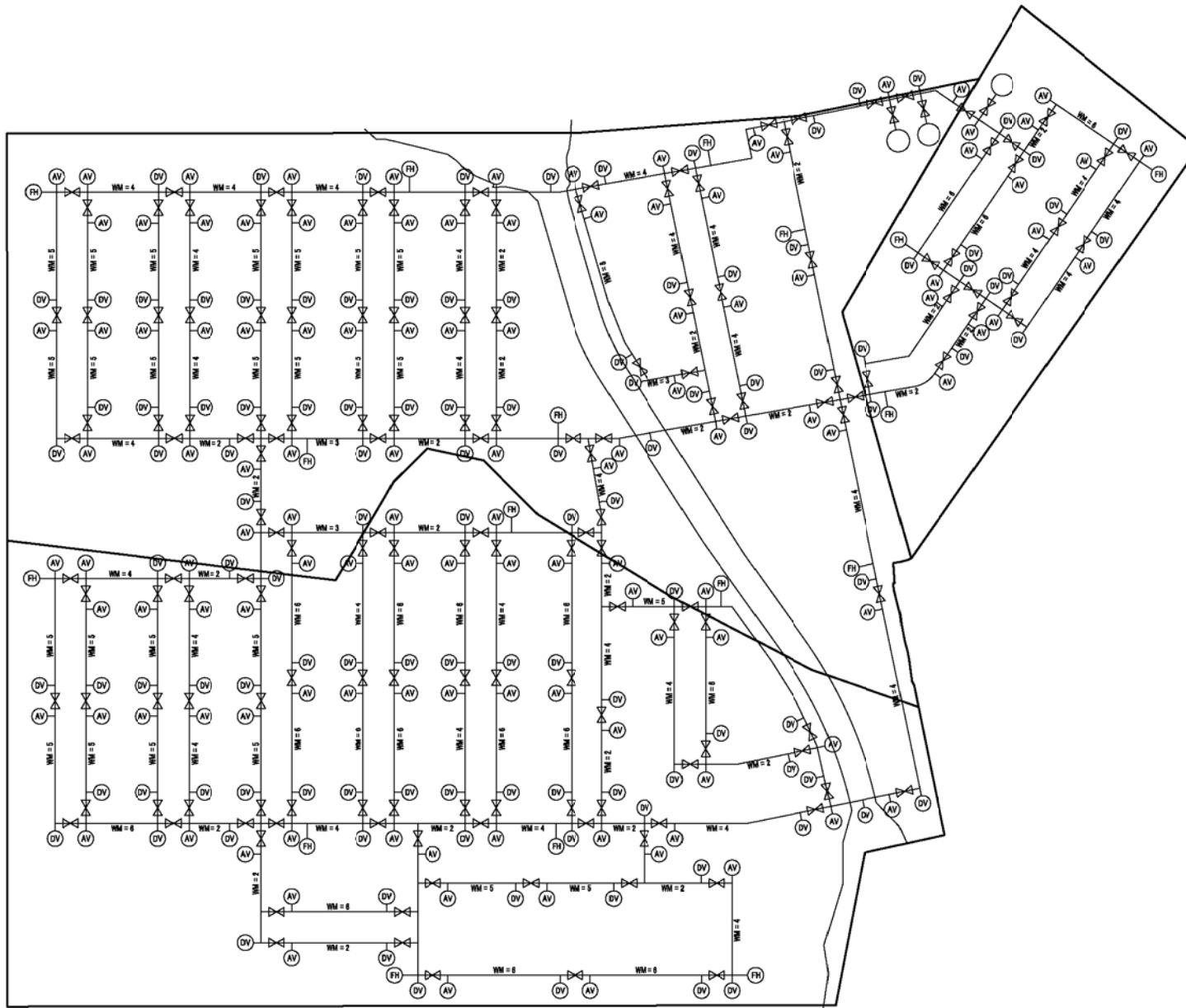
SCALE A 0 50 100 250 METRES

JICA JAPAN INTERNATIONAL COOPERATION AGENCY
 THE FEASIBILITY STUDY ON AGRO-INDUSTRIAL PARK DEVELOPMENT
 IN THE JORDAN RIVER RIFT VALLEY

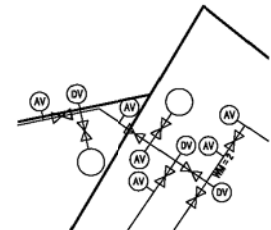
Drawing Title: **Water Supply Facilities
 Water Distribution Networks
 Plan**

Prepared by: **KRI INTERNATIONAL CORP.**
 NIPPON KOEI CO., LTD.

Drawing No: **261**
 Date: **November 2008**



ACCESSORIES DIAGRAM
(3 stages development)
(Not in Scale)



ACCESSORIES DIAGRAM
(2 stages development)
(Not in Scale)

Note: In case of 2 stage development, 3 water supply tanks shall be combined into 2 tanks. Thereby, arrangement of accessories surrounding the tanks are changed as shown in the above. Arrangement of other networks are not changed.

LEGEND

- SV : Sluice Valve
- AV : Air Valve
- DV : Drain Valve
- FH : Fire Hydrant
- WM : Water Meter

PLANNED NUMBER OF ACCESSORIES

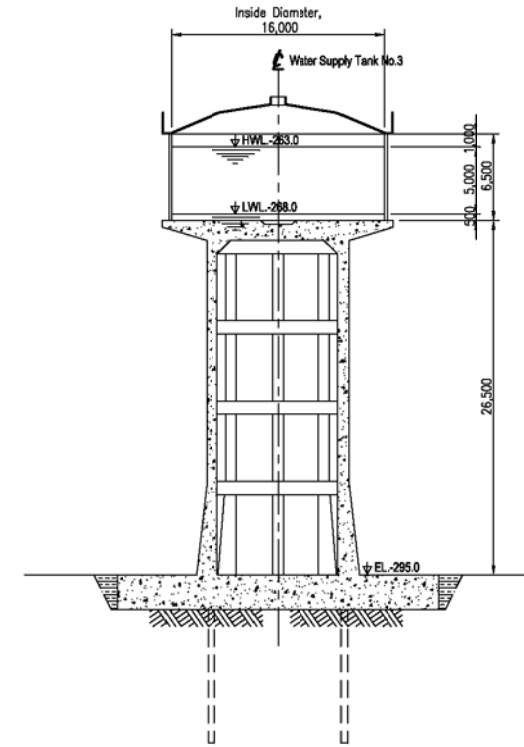
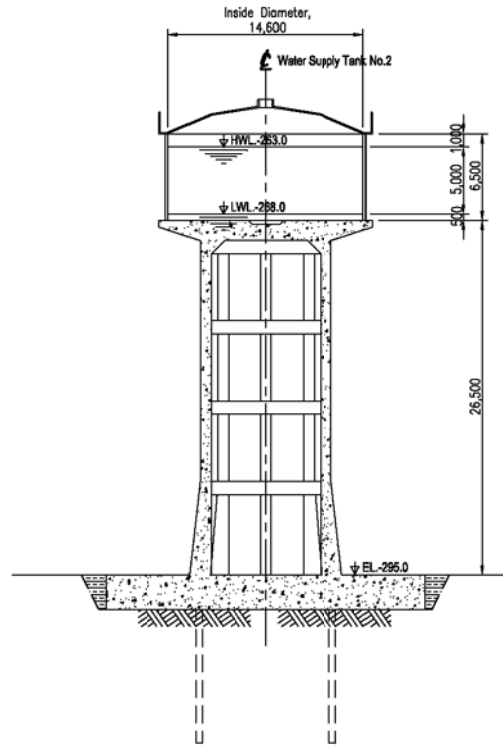
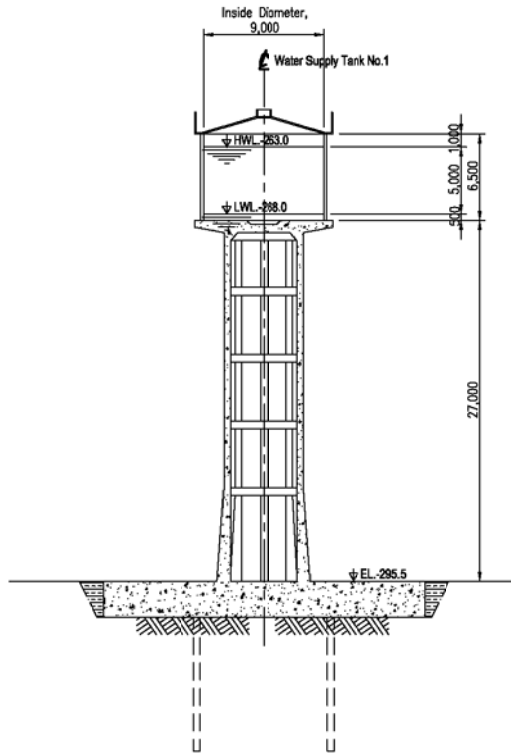
	Stage 1	Stage 2	Stage 3	Total
Sluice Valve				
DN 75	17	33	50	100
DN100	3	2	24	29
DN200	0	20	0	20
DN300	0	14	0	14
Air Valve				
DN 75	13	22	34	69
DN100	1	2	22	25
DN200	0	14	0	14
DN300	0	11	0	11
Drain Valve				
DN 75	12	22	34	68
DN100	2	1	21	24
DN200	0	13	0	13
DN300	0	12	0	12
Fire Hydrant	3	7	7	17
Water Meter	42	158	216	416

SCALE A METRES

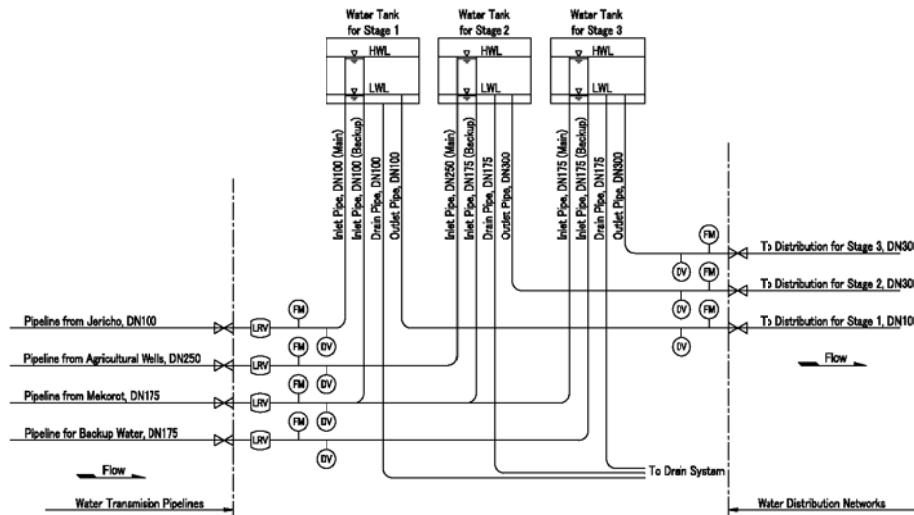
jica JAPAN INTERNATIONAL COOPERATION AGENCY
THE FEASIBILITY STUDY ON AGRO-INDUSTRIAL PARK DEVELOPMENT
IN THE JORDAN RIVER RIFT VALLEY

Drawing Title: **Water Supply Facilities
Water Distribution Networks
Accessories Diagram**

Prepared by: **KRI INTERNATIONAL CORP.** Drawing No: **262**
NIPPON KOEI CO., LTD. Date: **November 2008**



PROFILES OF WATER SUPPLY TANK
(3 stage development)
(Scale A)

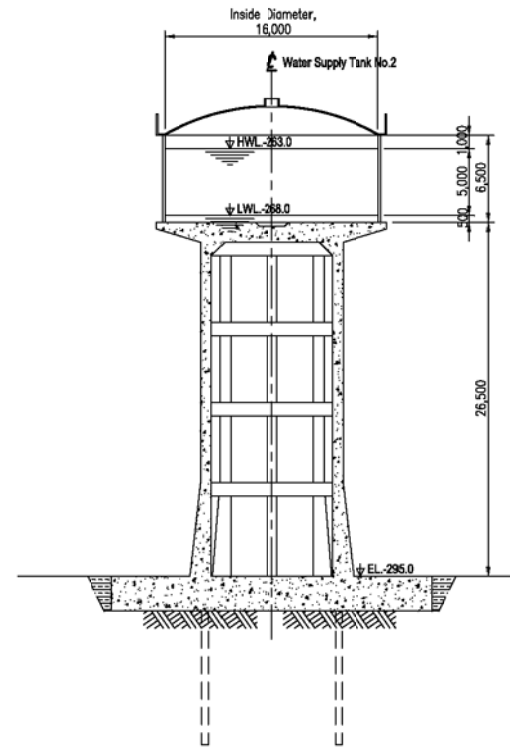
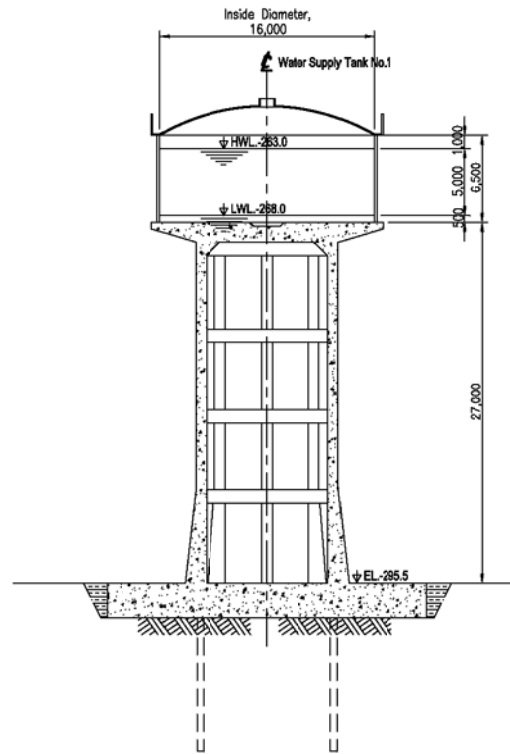


PROFILES & PIPELINE DIAGRAM
(3 stage development)
(Not in Scale)

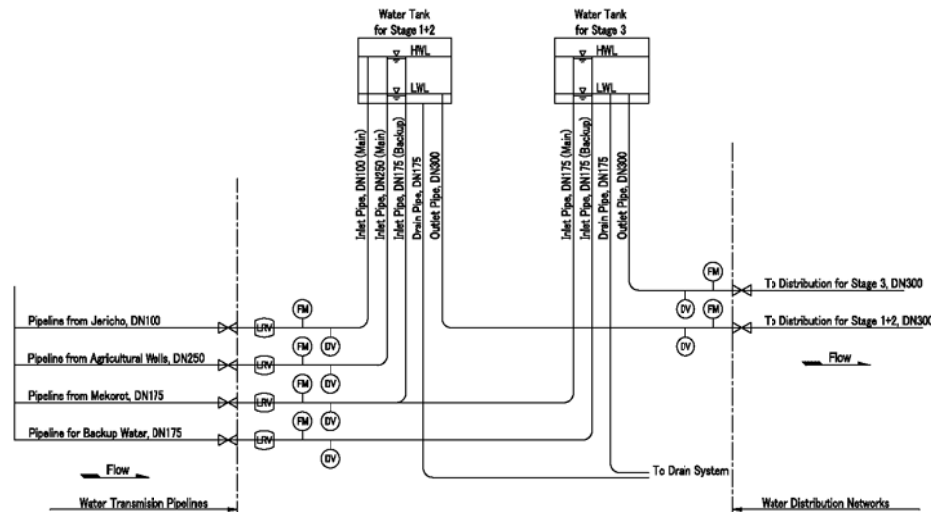
LIST OF ACCESORIES

	Stage 1	Stage 2	Stage 3	Total
Level Regulating Valve				
DN100	1	0	0	1
DN175	1	0	1	2
DN250	0	1	0	1
DN300	-	-	-	-
Drain Valve				
DN100	2	0	0	2
DN175	1	0	1	2
DN250	0	1	0	1
DN300	0	1	1	2
Flow Meter				
DN100	2	0	0	2
DN175	1	0	1	2
DN250	0	1	0	1
DN300	0	1	1	2

SCALE A 0 4 8 20 METRES



PROFILES OF WATER SUPPLY TANK
(2 stage development)
(Scale A)



PROFILES & PIPELINE DIAGRAM
(2 stage development)
(Not in Scale)

LIST OF ACCESSORIES

	Stage 1+2	Stage 2	Total
Level Regulating Valve			
DN100	1	0	1
DN175	1	1	2
DN250	1	0	1
DN300	-	-	-
Drain Valve			
DN100	1	0	1
DN175	1	1	2
DN250	1	0	1
DN300	1	1	2
Flow Meter			
DN100	1	0	1
DN175	1	1	2
DN250	1	0	1
DN300	1	1	2

SCALE A 0 4 8 20 METRES



Legend

- Wastewater Collection Facilities
- Reclaimed Water network



	JAPAN INTERNATIONAL COOPERATION AGENCY THE FEASIBILITY STUDY ON AGRO-INDUSTRIAL PARK DEVELOPMENT IN THE JORDAN RIVER RIFT VALLEY	
	Wastewater Collection Facilities and Reclaimed Water Network Stage I, II and III, Plan	
Drawing Title:		
Prepared by:	KRI INTERNATIONAL CORP. NIPPON KOEI CO., LTD.	Drawing No: 271 Date: November 2008

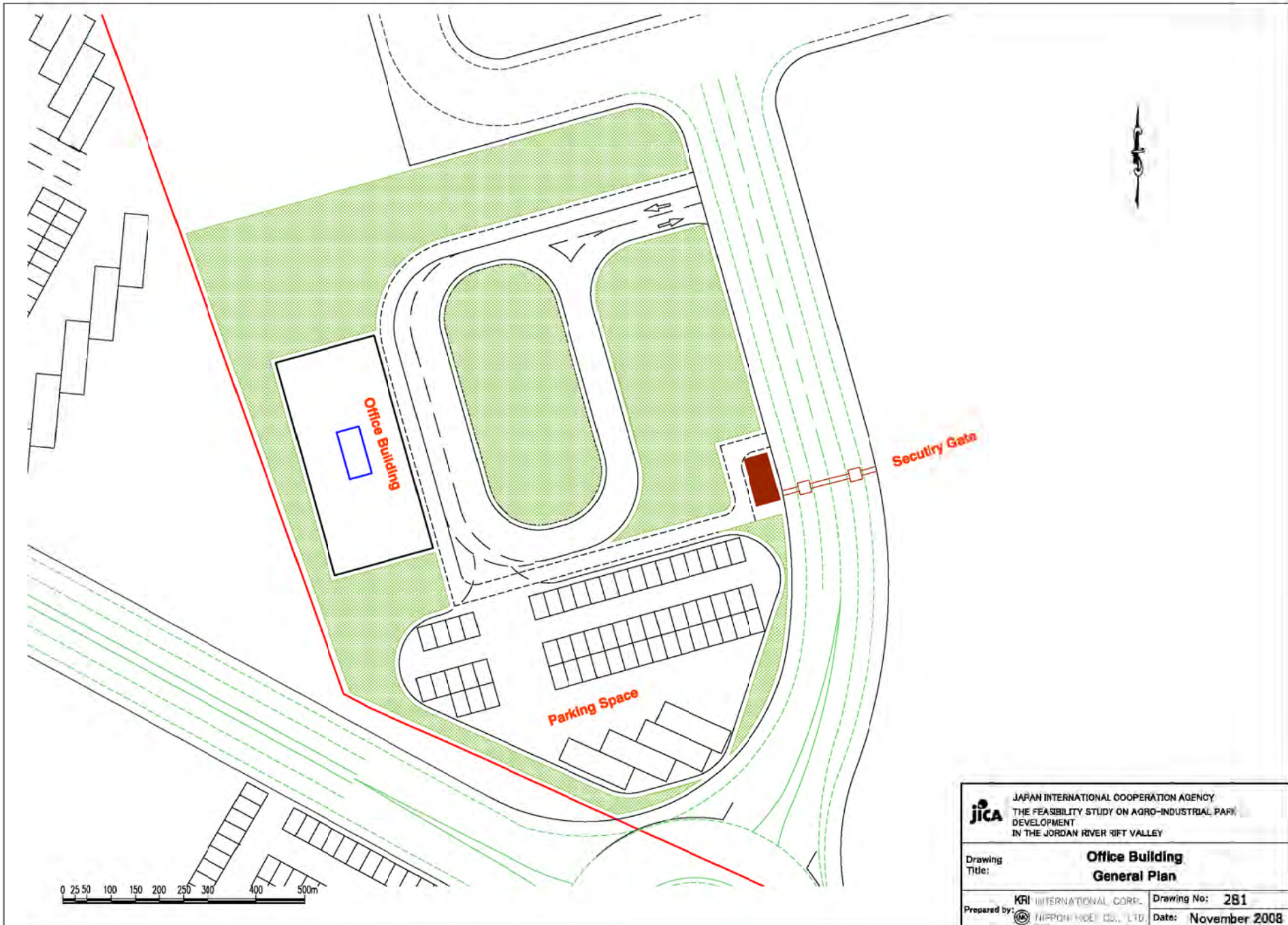




Legend

- Wastewater Collection Facilities
- Reclaimed Water network



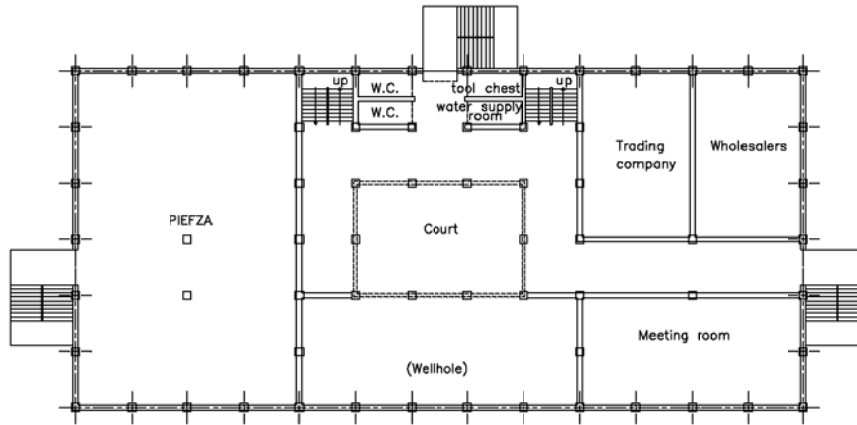
JAPAN INTERNATIONAL COOPERATION AGENCY THE FEASIBILITY STUDY ON AGRO-INDUSTRIAL PARK DEVELOPMENT IN THE JORDAN RIVER RIFT VALLEY	
Wastewater Collection Facilities and Reclaimed Water Network Stage I + II and III, Plan	
Drawing Title:	Drawing No: 272
Prepared by:	Date: November 2008
KRI INTERNATIONAL CORP. NIPPON KOEI CO., LTD.	



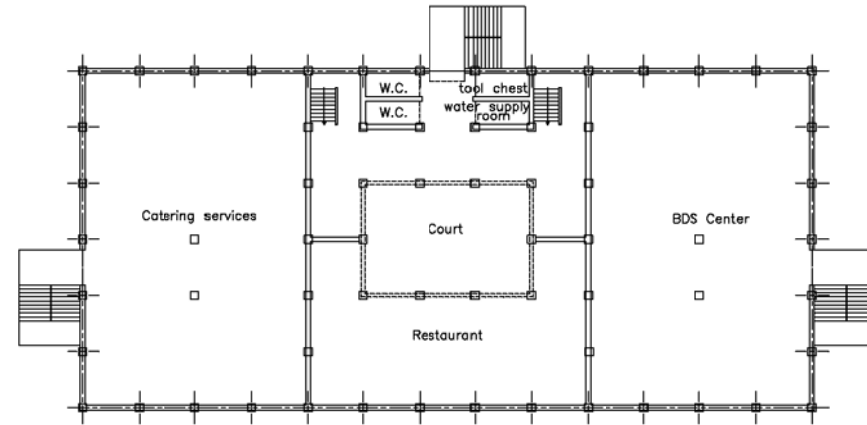
 JAPAN INTERNATIONAL COOPERATION AGENCY THE FEASIBILITY STUDY ON AGRO-INDUSTRIAL PARK DEVELOPMENT IN THE JORDAN RIVER RIFT VALLEY	
Drawing Title:	Office Building General Plan
Prepared by:	KRI INTERNATIONAL CORP.  NIPPON HOEI CO., LTD.
Drawing No:	281
Date:	November 2008

Office Building (I)

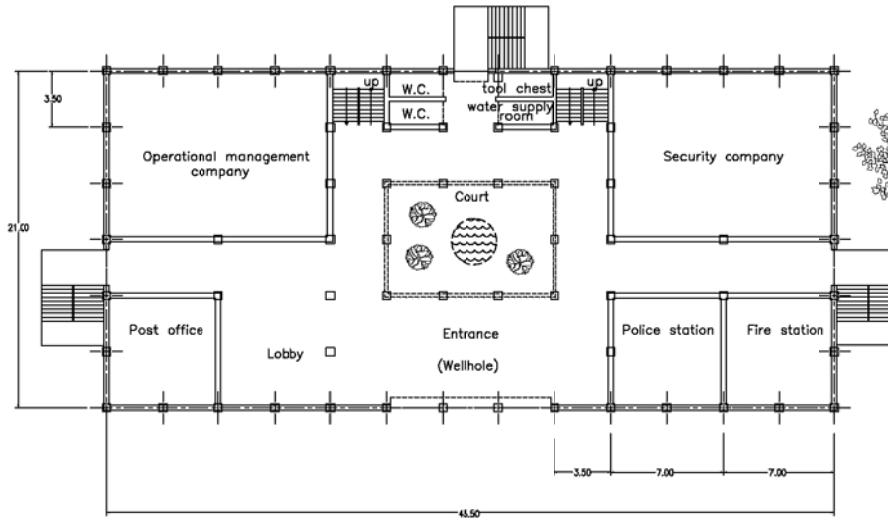
< 2F >



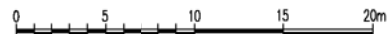
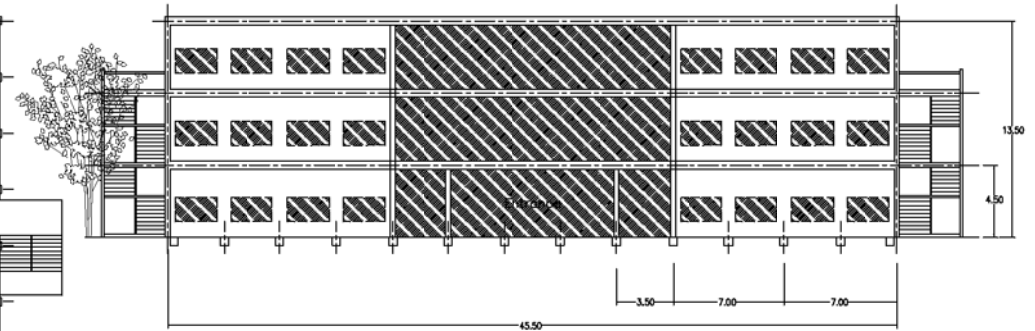
< 3F >




< 1F >





<Front view >



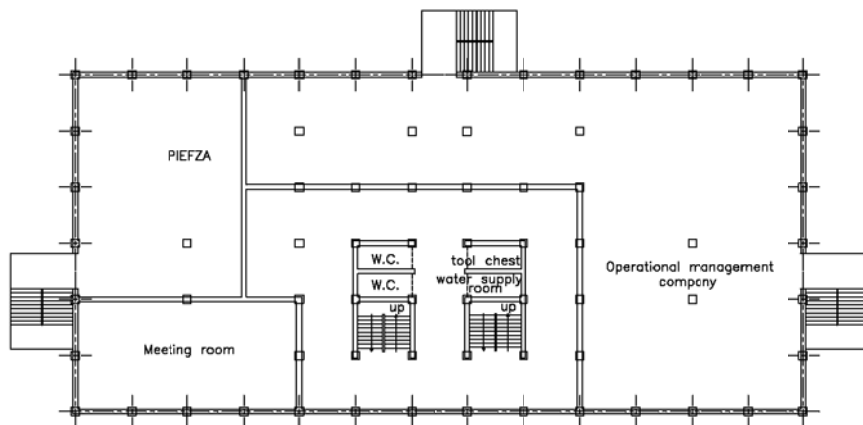

 JAPAN INTERNATIONAL COOPERATION AGENCY
 THE FEASIBILITY STUDY ON AGRO-INDUSTRIAL PARK
 DEVELOPMENT
 IN THE JORDAN RIVER RIFT VALLEY

Drawing Title: **Office Building Plan and Profile, Stage I**

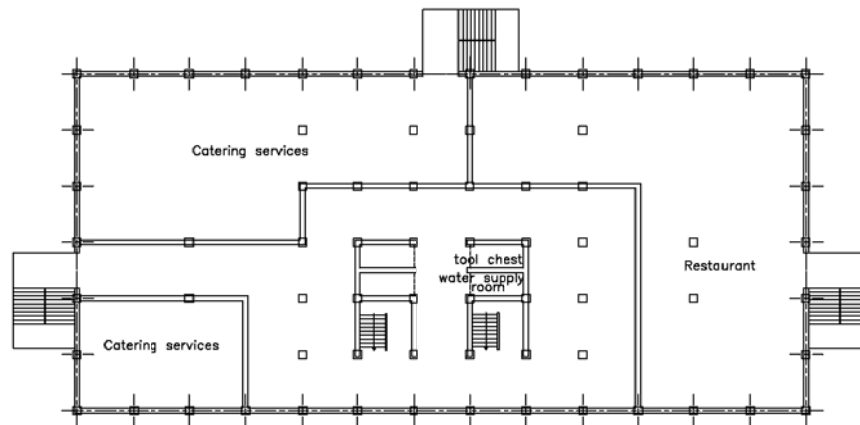
Prepared by:  KRI INTERNATIONAL CORP. Drawing No: 282
 NIPPON KOEI CO., LTD. Date: November 2008

Office Building (II)

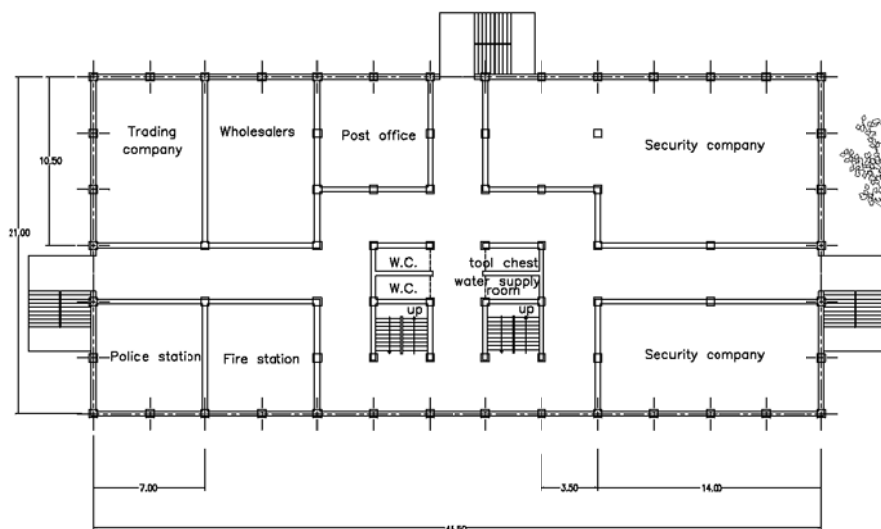
< 2F >



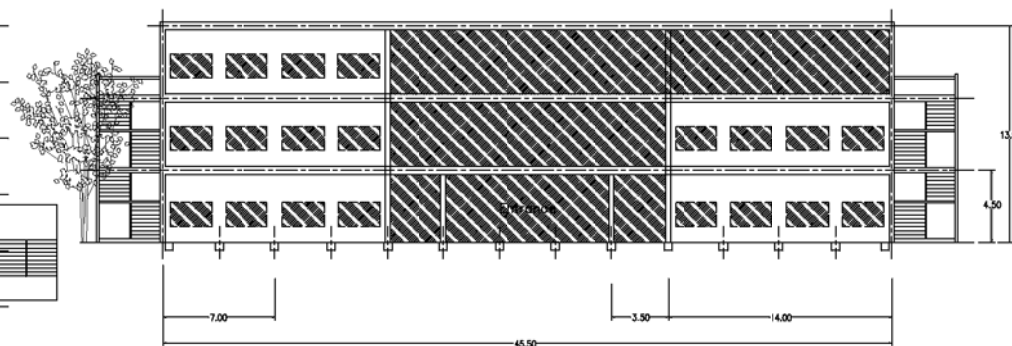
< 3F >



< 1F >



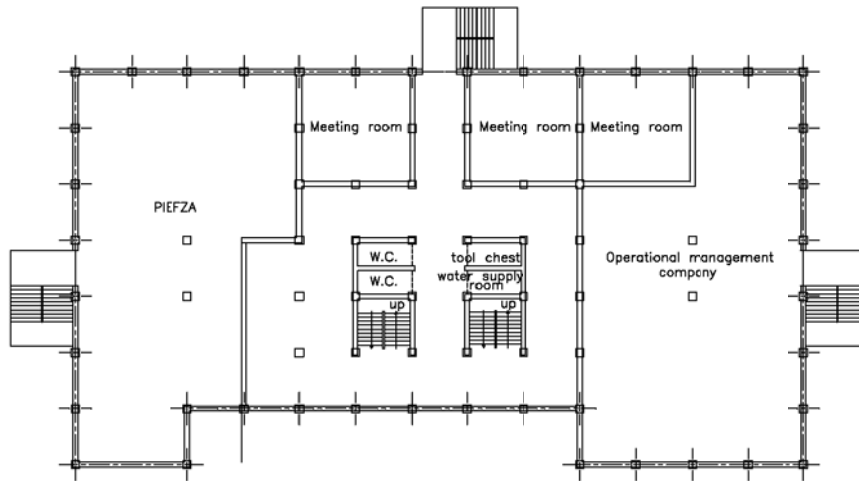
<Front view >



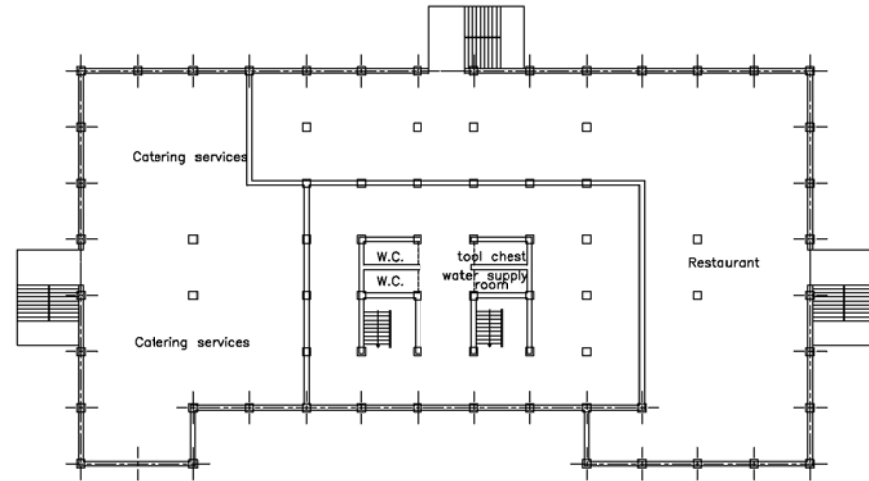
 JAPAN INTERNATIONAL COOPERATION AGENCY THE FEASIBILITY STUDY ON AGRO-INDUSTRIAL PARK DEVELOPMENT IN THE JORDAN RIVER RIFT VALLEY	
Office Building Plan and Profile, Stage II	
Drawing Title:	Drawing No: 283
Prepared by:	Date: November 2008
KRI INTERNATIONAL CORP. NIPPON KOEI CO., LTD.	

Office Building (III)

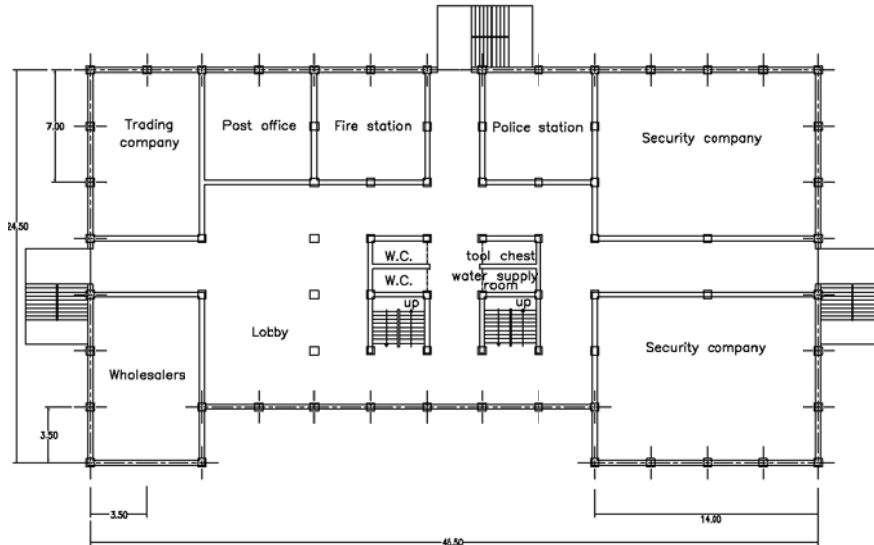
< 2F >



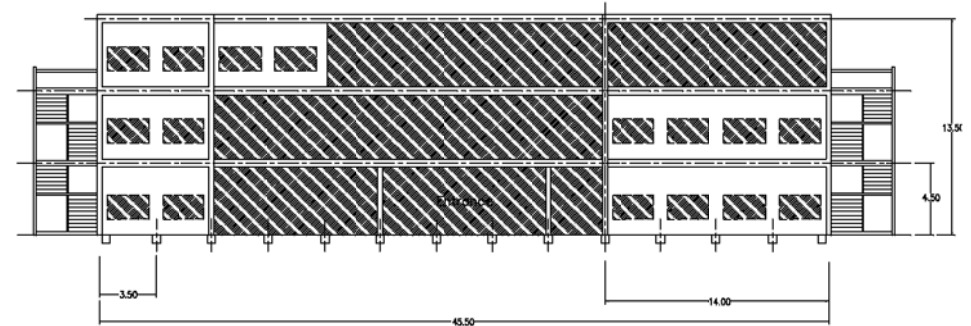
< 3F >



< 1F >



<Front view >



JAPAN INTERNATIONAL COOPERATION AGENCY
THE FEASIBILITY STUDY ON AGRO-INDUSTRIAL PARK
DEVELOPMENT
IN THE JORDAN RIVER RIFT VALLEY

Drawing
Title:

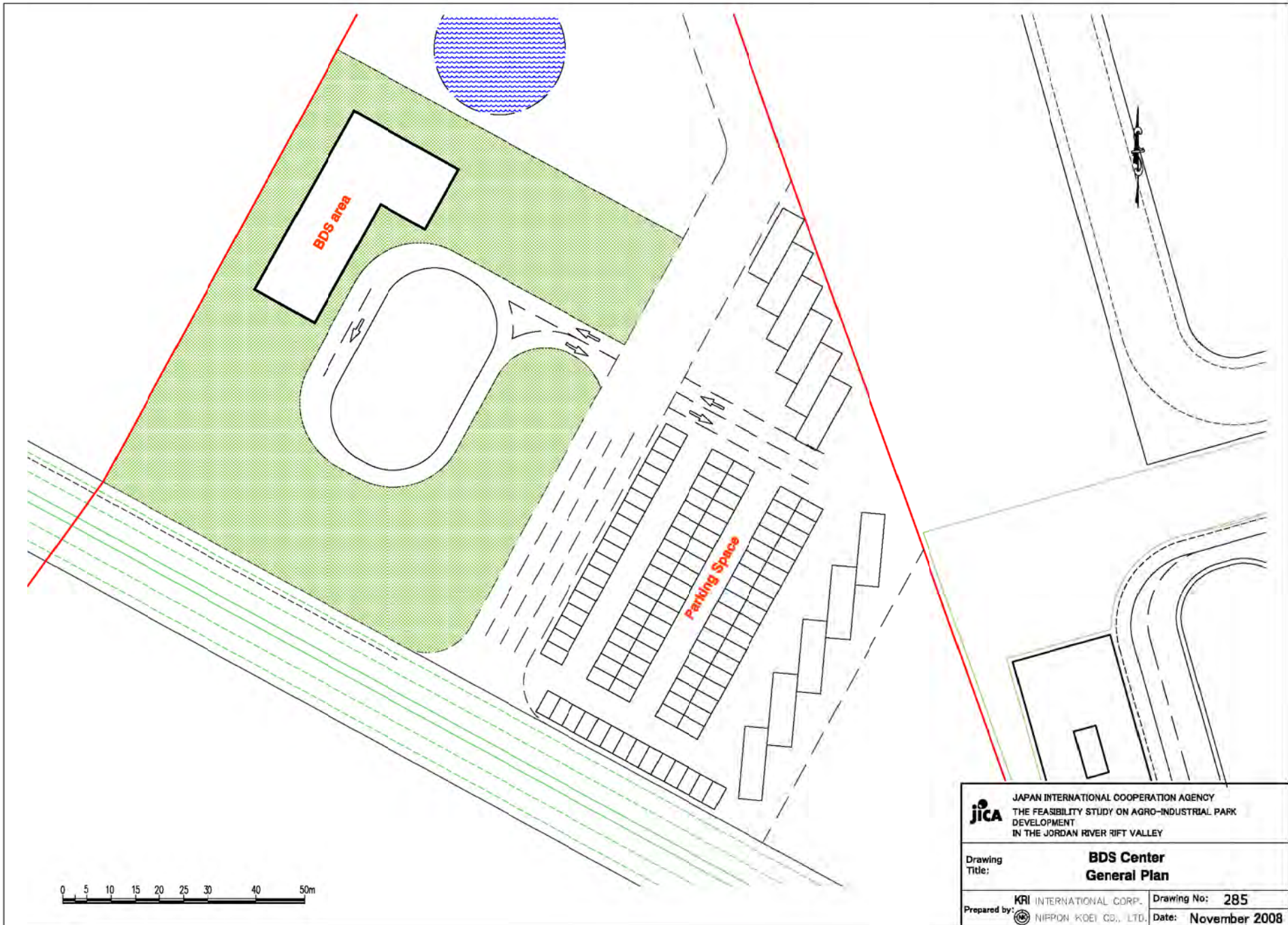
**Office Building
Plan and Profile, Stage III**



Prepared by:

KRI INTERNATIONAL CORP.
NIPPON KOEI CO., LTD.

Drawing No: 284

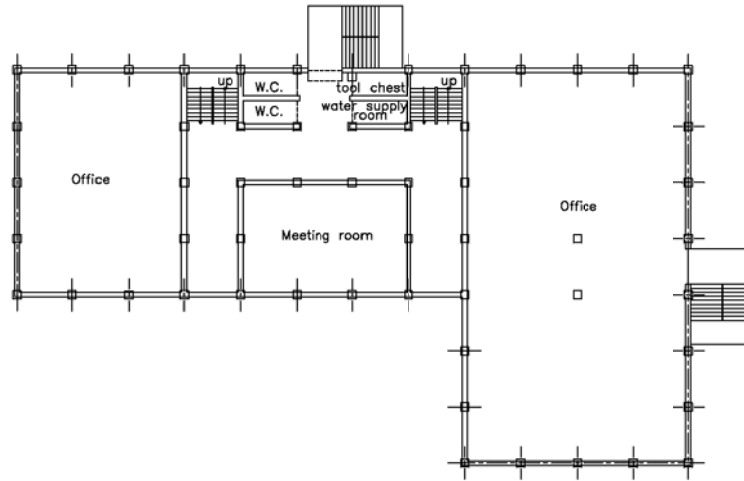
Date: November 2008



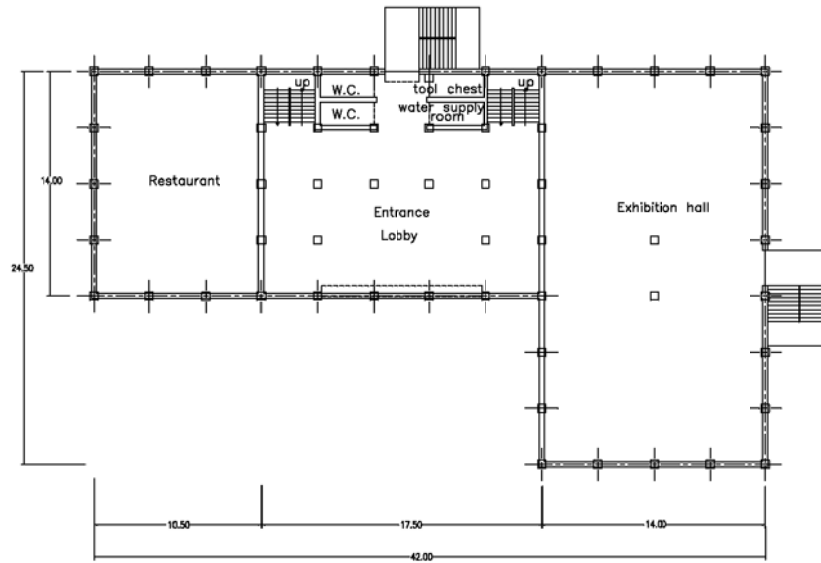
 JAPAN INTERNATIONAL COOPERATION AGENCY THE FEASIBILITY STUDY ON AGRO-INDUSTRIAL PARK DEVELOPMENT IN THE JORDAN RIVER RIFT VALLEY	
Drawing Title:	BDS Center General Plan
Prepared by:	KRI INTERNATIONAL CORP.  NIPPON KOEI CO., LTD.
Drawing No:	285
Date:	November 2008

BDS Center

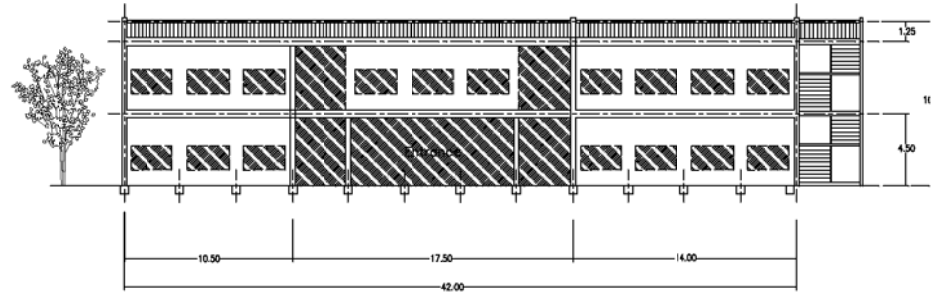
< 2F >




< 1F >



< Front view >

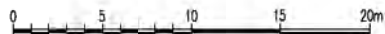
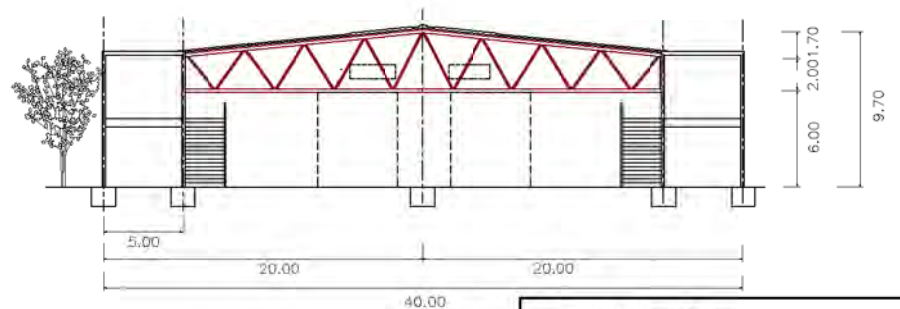
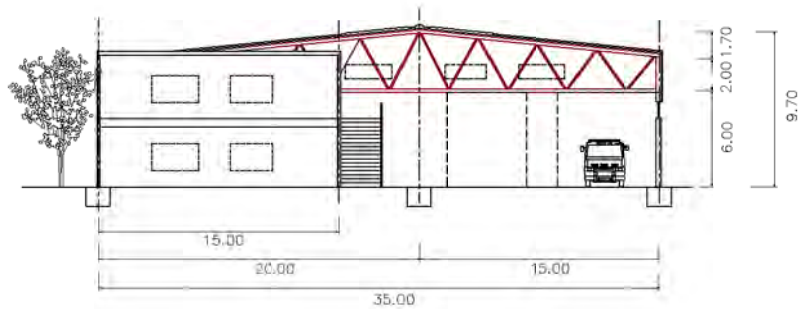


 JAPAN INTERNATIONAL COOPERATION AGENCY THE FEASIBILITY STUDY ON AGRO-INDUSTRIAL PARK DEVELOPMENT IN THE JORDAN RIVER RIFT VALLEY		
Drawing Title:		BDS Center Plan and Profile
Prepared by:	KRI INTERNATIONAL CORP.  NIPPON KOEI CO., LTD.	Drawing No: 286 Date: November 2008

STANDARD FACTORY BUILDING (standard size)



STANDARD FACTORY BUILDING (small size)

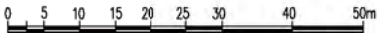
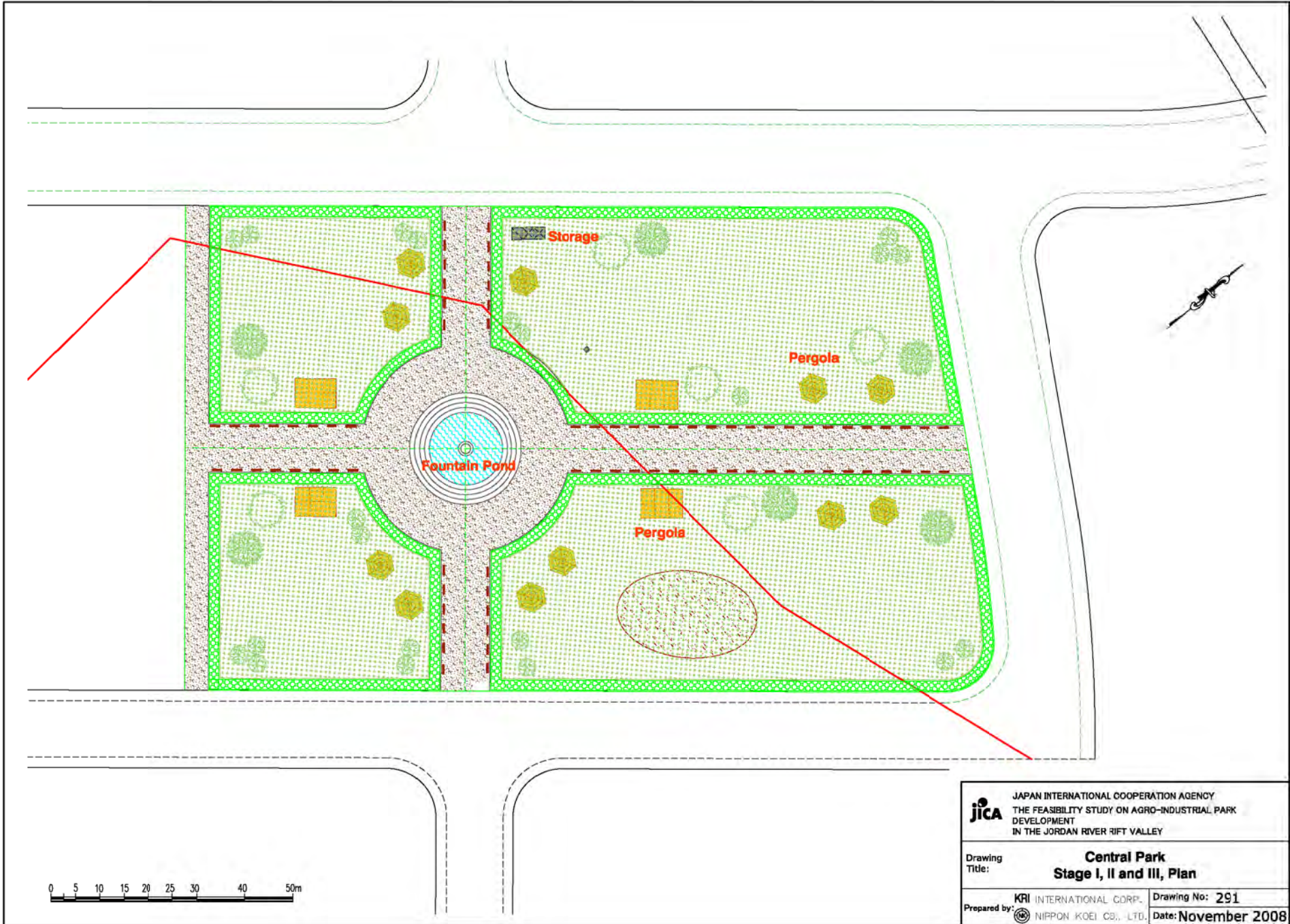



 JAPAN INTERNATIONAL COOPERATION AGENCY
 THE FEASIBILITY STUDY ON AGRO-INDUSTRIAL PARK
 DEVELOPMENT
 IN THE JORDAN RIVER RIFT VALLEY

Drawing Title: Standard Factory Building
 Plan nad Profile

Prepared by: KRI INTERNATIONAL CORP.  NIPPON KOEI CO., LTD.

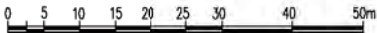
Drawing No: 287
Date: November 2008


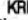



jica JAPAN INTERNATIONAL COOPERATION AGENCY
 THE FEASIBILITY STUDY ON AGRO-INDUSTRIAL PARK
 DEVELOPMENT
 IN THE JORDAN RIVER RIFT VALLEY

Drawing Title: **Central Park
 Stage I, II and III, Plan**

Prepared by: **KRI INTERNATIONAL GDRP.** Drawing No: **291**
NIPPON KOEI CO., LTD. Date: **November 2008**



 JAPAN INTERNATIONAL COOPERATION AGENCY THE FEASIBILITY STUDY ON AGRO-INDUSTRIAL PARK DEVELOPMENT IN THE JORDAN RIVER RIFT VALLEY	
Drawing Title: Central Park Section I and II, Plan	
Prepared by:  KRI INTERNATIONAL GDRP.  NIPPON KOEI CO., LTD.	Drawing No: 292 Date: November 2008