

添 付 資 料

1. 署名ミニッツ
2. 最終要請リスト
3. 協議議事録

MINUTES OF DISCUSSIONS
PREPARATORY SURVEY
ON THE PROJECT FOR THE REHABILITATION OF HOSPITALS AND SUPPLY OF
MEDICAL EQUIPMENT IN THE CENTRAL REGION IN UGANDA

In response to a request from the Government of the Republic of Uganda (hereinafter referred to as "Uganda"), the Government of Japan decided to conduct a Preparatory Survey on the Project for the Rehabilitation of Hospitals and Supply of Medical Equipment in the Central Region in Uganda (hereinafter referred to as "the Project") and entrusted the survey to the Japan International Cooperation Agency (hereinafter referred to as "JICA").

JICA sent to Uganda the Preparatory Survey Team (hereinafter referred to as "the Team"), which is headed by Mr. Tatsuya Murase, Senior Adviser to the Director General, Economic Infrastructure Department, JICA, and is scheduled to stay in the country from November 2 to November 26, 2008.

The Team held discussions with the officials concerned of the Government of the Republic of Uganda and conducted a field survey.

In the course of discussions and field survey, both parties confirmed the main items described in the attachment. Subject to the decision by the Government of Japan, JICA will conduct a Preparatory Survey (Basic Design) on the Project.

Kampala, November 14, 2008



Mr. Tatsuya MURASE
Leader
Preparatory Survey Team
Japan International Cooperation Agency



MARY L. NANNONO
Permanent Secretary
Ministry of Health
Government of the Republic of Uganda

ATTACHMENT

1. Objective of the Project

The objective of the Project is to improve the health care service delivery system in the Central Region in Uganda, through the construction and/or rehabilitation of selected new facilities and the procurement of medical equipment at hospitals.

2. Project Sites

The Project Sites are Masaka, Wakiso, Mpigi, Nakaseke, Kayunga, Mubende, Mukono and Mityana districts showed in Annex-1.

3. Responsible and Implementing Agency

3-1. The Responsible Agency is the Ministry of Health, the Government of the Republic of Uganda (Annex-2).

3-2. The Implementing Agency is the Health Infrastructure Division, the Department of Clinical Services, the Ministry of Health, the Government of the Republic of Uganda (Annex-3).

4. Items requested by the Government of the Republic of Uganda

After discussions with the Team, the following items were finally requested by the Uganda Side. JICA will assess the appropriateness of the request and will recommend the findings to the Government of Japan.

(1) The Uganda Side explained that construction and/or rehabilitation will be prioritized over the medical equipments.

(2) Construction and/or rehabilitation of the Facilities: Priority of sites is listed in Annex-4.

(3) Facilities: Details of facilities with priority will be submitted before 26 November 2008 to the Team.

(4) Selection criteria of the targeted equipment is attached as Annex-5.

(5) Procurement of the Equipment: Details of items with priority will be submitted before 26 November 2008 to the Team.

5. Japan's Grant Aid Scheme

5-1. The Uganda Side understands the Japan's Grant Aid Scheme explained by the Team, as described in Annex-6.

5-2. The team explained that JICA took over the implementation of the Grant Aid Scheme from October 2008.

5-3. The Uganda Side will take the necessary measures, as described in Annex-7, for smooth implementation of the Project, as a condition for the Japanese Grant Aid Scheme to be implemented.

6. Schedule of the Survey

6-1. Two consultant members of the Team will continue with the survey in Uganda up to November 26, 2008.

6-2. If the Project is found feasible as a result of the Preparatory Survey, JICA will send the Preparatory Survey (Basic Design) Team around February, 2009.



7. Other relevant issues

7-1. Budgets for Operation and Maintenance of the Targeted Facilities and Equipment

The Uganda Side has agreed to establish appropriate maintenance system of health facility and medical equipment in health care services. Both side agreed that vitalization of Maintenance Workshops including allocation of appropriate budget to operate and maintain will be important for the constructed and/or rehabilitated facilities and procured equipment by the Project properly and effectively.

7-2. Staff Recruitment and Capacity Building

The Uganda Side has agreed to promote the staff recruitment and capacity building for the effective use of the constructed and/or rehabilitated facilities and procured equipment by the Project, as a condition for the Project to be implemented.

7-3. Harmonization with the relevant districts

The Uganda Side agreed to provide Memoranda of Understanding between the Ministry of Health and District Local Governments indicating obligations of each party for the Project.

7-4. Allocation of the X-Ray and Ultrasound

The Uganda Side explained that they have already procured X-Ray and Ultrasound for some hospitals. Both sides agreed to delete X-Ray and Ultrasound from the equipment list for those hospitals.

7-5. The Uganda Side explained that Mubende Hospital will be upgraded to the Regional Referral Hospital from July 1, 2009. The Uganda Side requested to categorize that Hospital as high priority.

Annex- 1: Project Sites Map

- 2: Organization Chart of the Ministry of Health
- 3: Organization Chart of the Clinical Services Department
- 4: Priority of the Construction sites
- 5: Selection Criteria of the Targeted Equipment
- 6: Japan's Grant Aid Scheme
- 7: Major Undertakings to be taken by Each Government

ff

Annex-1-1 Project Sites Map



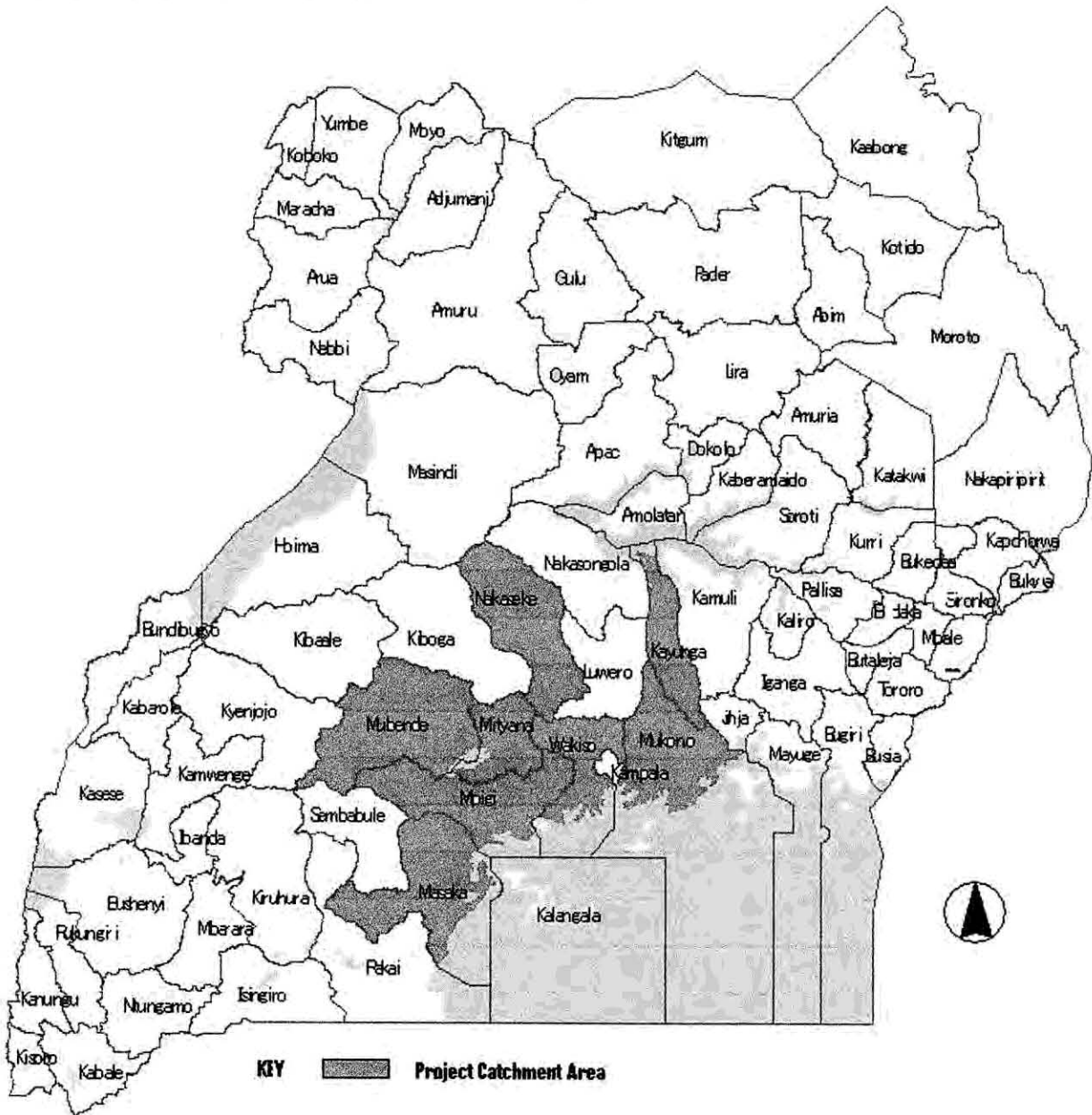
Base 803110A1 (G00031) 4-05

No.	District	Health Facility
1	Masaka	Masaka Regional Hospital
2	Mubende	Mubende Hospital
3	Mityana	Mityana Hospital
4	Wakiso	Entebbe Hospital
5	Mpigi	Gombe Hospital
6	Nakaseke	Nakaseke Hospital
7	Kayunga	Kayunga Hospital
8	Mukono	Kawolo Hospital

MUN

ss

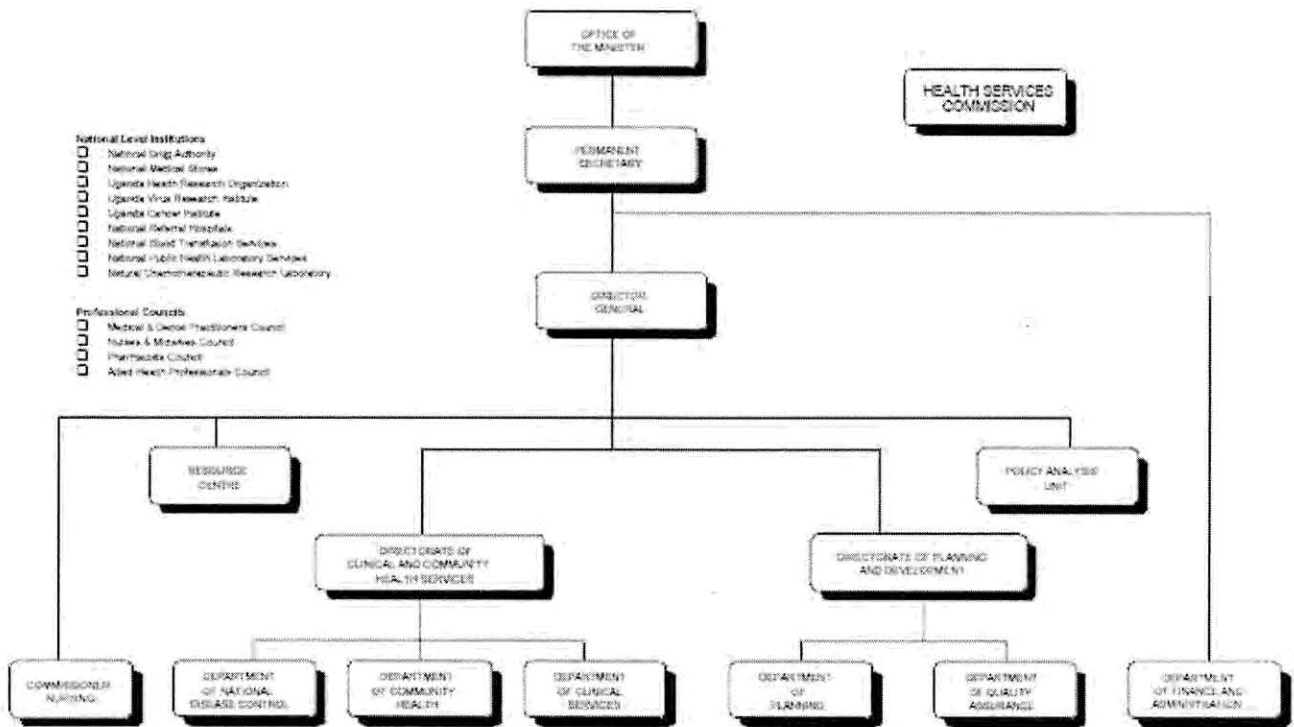
Annex-1-2 Project Sites Map (Catchment Area)



ss

MUN

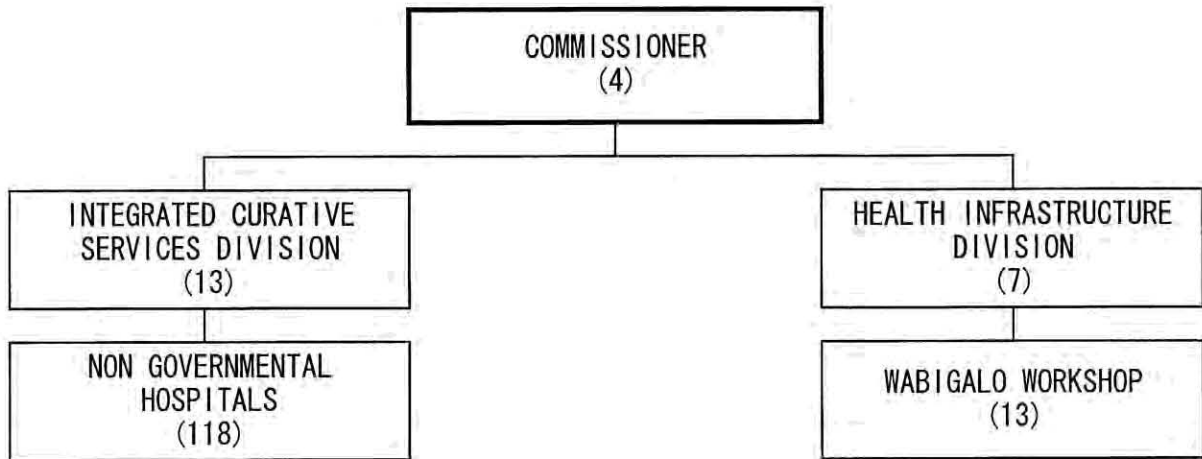
Annex-2 Organization Chart of the Ministry of Health



SS

MEM

Annex-3 Organization chart of the Clinical Services Department



ff

mcu

Annex-4 Priority of the Construction Sites

Masaka Regional Referral Hospital: A

Mubende Hospital: A

Mityana Hospital: A-

Entebbe Hospital: B

A: high priority

B: middle priority

C: low priority



Annex-5 Selection Criteria of the Targeted Equipment

1. Higher Priority

The targeted equipment of higher priority is shown as follows.

- Equipment operated by the staff members who have been well-trained for the operation of the equipment and enough clinical experiences
- Essential equipment for the basic health care service provided at the health unit
- Appropriate equipment suitable for the technical level of the health unit from the view point of the referral system establishment
- More highly cost-effective equipment from the standpoint of operation, maintenance and hospital management
- Equipment required replacement because of being too old for use in daily health care service
- Insufficient quantity of equipment to provide the daily health care service at the health unit

2. Lower Priority

The targeted equipment of lower priority is shown as follows.

- Equipment which needs difficult installation due to the lack of suitable facility
- Equipment that are already procured by District Health Services Project and/or Aid agency
- Equipment needs unaffordable cost for operation and maintenance
- Required non-available spare parts, consumable and reagent in Uganda
- Equipment that may cause an environmental pollution
- Equipment required more quantity than necessary at the health unit
- Equipment for most likely personal use by staff members like computers, motorcycles, etc.

JS

MCN

Annex-6 Japan's Grant Aid

The Grant Aid scheme provides a recipient country with non-reimbursable funds to procure the facilities, equipment and services (engineering services and transportation of the products, etc.) for economic and social development of the country under principles in accordance with the relevant laws and regulations of Japan. The Grant Aid is not supplied through the donation of materials as such.

1-1 Japan's Grant Aid Procedures

Japan's Grant Aid Scheme is executed by the following procedures.

Application	(Request made by a recipient country)
Survey	(Basic Design conducted by JICA)
Appraisal & Approval	(Appraisal by the Government of Japan and Approval by Cabinet)
Determination of Implementation	(Exchange of Notes between the Governments of Japan and the recipient country)

Firstly, the application or request for a Grant Aid project submitted by a recipient country is examined by the Government of Japan (the Ministry of Foreign Affairs) to determine whether or not it is eligible for the Grant Aid. If the request is deemed appropriate, the Government of Japan assigns JICA to conduct a survey on the request.

Secondly, JICA conducts the survey (Basic Design), using (a) Japanese consulting firm(s).

Thirdly, the Government of Japan appraises the project to see whether or not it is suitable for Japan's Grant Aid Scheme, based on the Basic Design report prepared by JICA, and the results are then submitted to the Cabinet for approval.

Fourthly, the project, once approved by the Cabinet, becomes official with the Exchange of Notes (E/N) signed by the Governments of Japan and the recipient country.

Finally, for the smooth implementation of the project, JICA assists the recipient country in such matters as preparing tenders, contracts and so on.

1-2 Basic Design

(1) Contents of the Survey

The aim of the Basic Design (hereafter referred to as "the Survey"), conducted by JICA on a requested project (hereafter referred to as "the Project") is to provide a basic document necessary for the appraisal of the Project by the Government of Japan. The contents of the Survey are as follows:

- Confirmation of the background, objectives, and benefits of the requested Project and also institutional capacity of agencies concerned of the recipient country necessary for the Project's implementation.
- Evaluation of the appropriateness of the Project to be implemented under the Grant Aid Scheme from a technical, social and economic point of view.
- Confirmation of items agreed upon by both parties concerning the basic concept of the Project.
- Preparation of a Basic Design of the Project
- Estimation of cost of the Project

MUN

js

The contents of the original request are not necessarily approved in their initial form as the contents of the Grant Aid project. The Basic Design of the Project is confirmed considering the guidelines of Japan's Grant Aid Scheme.

The Government of Japan requests the Government of the recipient country to take whatever measures are necessary to ensure its self-reliance in the implementation of the Project. Such measures must be guaranteed even though they may fall outside of the jurisdiction of the organization in the recipient country actually implementing the Project. Therefore, the implementation of the Project is confirmed by all relevant organizations of the recipient country through the Minutes of Discussions.

(2) Selection of Consultants

For smooth implementation of the Survey, JICA uses (a) registered consulting firm(s). JICA selects (a) firm(s) based on proposals submitted by interested firms. The firm(s) selected carry(ies) out a Basic Design and write(s) a report, based upon terms of reference set by JICA.

The consulting firm(s) used for the Survey is(are) recommended by JICA to the recipient country to also work on the Project's implementation after the Exchange of Notes, in order to maintain technical consistency.

1-3 Japan's Grant Aid Scheme

(1) Exchange of Notes (E/N)

Japan's Grant Aid is extended in accordance with the Notes exchanged by the two Governments concerned, in which the objectives of the Project, period of execution, conditions and amount of the Grant Aid, etc., are confirmed.

(2) "The period of the Grant Aid" means the one fiscal year which the Cabinet approves the Project for. Within the fiscal year, all procedures such as exchanging of the Notes, concluding contracts with (a) consulting firm(s) and (a) contractor(s) and final payment to them must be completed. However, in case of delays in delivery, installation or construction due to unforeseen factors such as natural disaster, the period of the Grant Aid can be further extended for a maximum of one fiscal year at most by mutual agreement between the two Governments.

(3) Under the Grant Aid, in principle, Japanese products and services including transport or those of the recipient country are to be purchased. When the two Governments deem it necessary, the Grant Aid may be used for the purchase of the products or services of a third country. However, the prime contractors, namely, consulting constructing and procurement firms, are limited to "Japanese nationals". (The term "Japanese nationals" means persons of Japanese nationality or Japanese corporations controlled by persons of Japanese nationality.)

(4) Necessity of "Verification"

The Government of recipient country or its designated authority will conclude contracts denominated in Japanese yen with Japanese nationals. Those contracts shall be verified by the Government of Japan. This "Verification" is deemed necessary to secure accountability to Japanese taxpayers.

(5) Undertakings required to the Government of the Recipient Country

In the implementation of the Grant Aid project, the recipient country is required to undertake such necessary measures as the following:

① To secure land necessary for the sites of the Project and to clear, level and reclaim the

land prior to commencement of the construction,

- ② To provide facilities for the distribution of electricity, water supply and drainage and other incidental facilities in and around the sites,
- ③ To secure buildings prior to the procurement in case the installation of the equipment,
- ④ To ensure all the expenses and prompt execution for unloading, customs clearance at the port of disembarkation and internal transportation of the products purchased under the Grant Aid,
- ⑤ To exempt Japanese nationals from customs duties, internal taxes and other fiscal levies which will be imposed in the recipient country with respect to the supply of the products and services under the Verified Contracts,
- ⑥ To accord Japanese nationals, whose services may be required in connection with the supply of the products and services under the Verified contracts, such facilities as may be necessary for their entry into the recipient country and stay therein for the performance of their work.

(6) "Proper Use"

The recipient country is required to operate and maintain the facilities constructed and equipment purchased under the Grant Aid properly and effectively and to assign staff necessary for this operation and maintenance as well as to bear all the expenses other than those covered by the Grant Aid.

(7) "Re-export"

The products purchased under the Grant Aid should not be re-exported from the recipient country.

(8) Banking Arrangements (B/A)

- a) The Government of the recipient country or its designated authority should open an account in the name of the Government of the recipient country in a bank in Japan (hereinafter referred to as "the Bank"). The Government of Japan will execute the Grant Aid by making payments in Japanese yen to cover the obligations incurred by the Government of the recipient country or its designated authority under the Verified Contracts.
- b) The payments will be made when payment requests are presented by the Bank to the Government of Japan under an Authorization to Pay(A/P) issued by the Government of the recipient country or its designated authority.

(9) Authorization to Pay (A/P)

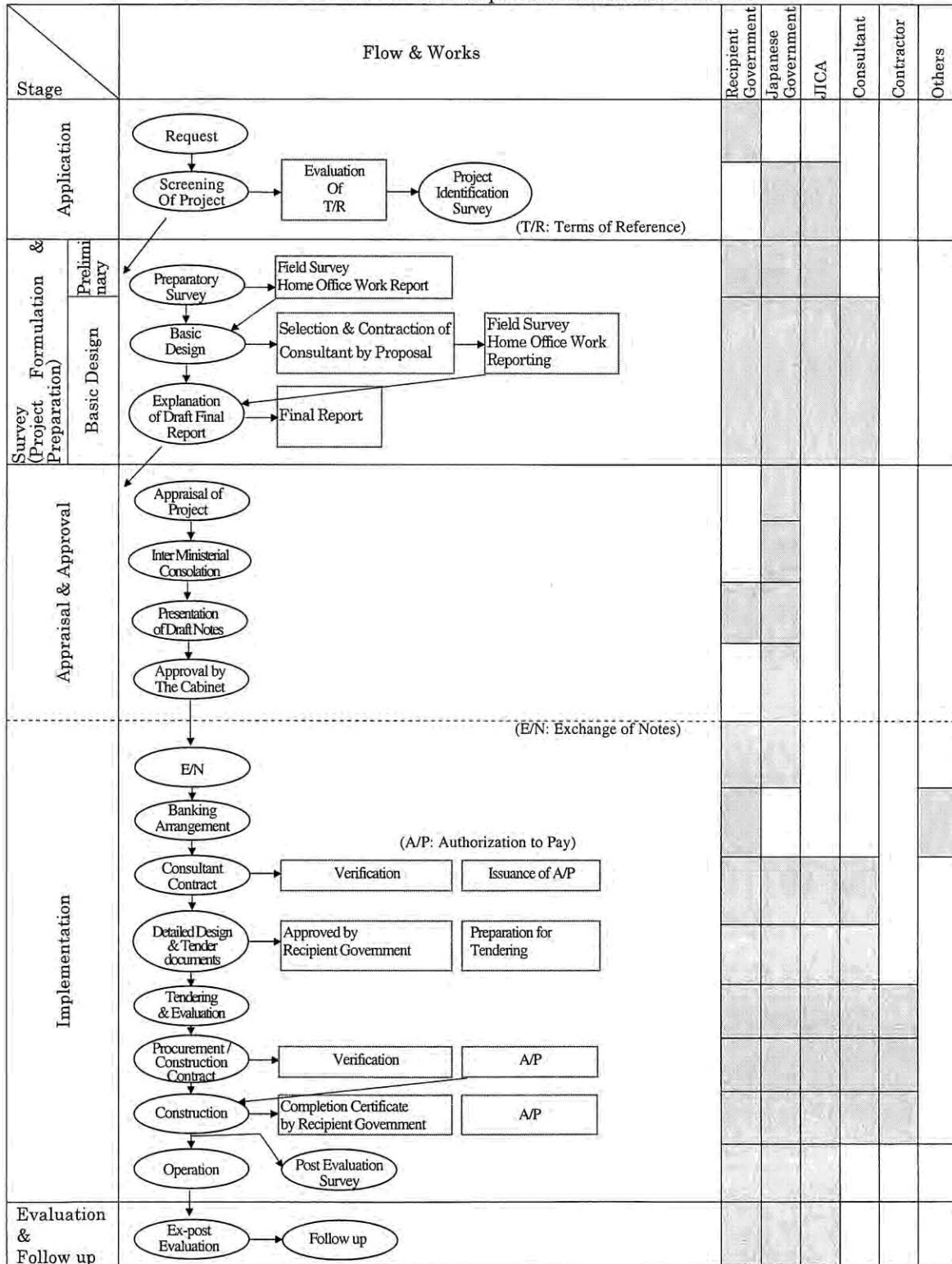
The Government of the recipient country should bear an advising commission of an Authorization to Pay and payment commissions to the Bank.

JP

NCW

1-4 Grant Aid Procedures

Flow Chart of Japan's Grant Aid Procedures



MW

PP

Annex-7 Major Undertaking to be taken by Each Government

No.	Items	To be covered by Grant Aid	To be covered by Recipient Side
1	To secure land		●
2	To clear, level and reclaim the site when needed		●
3	To construct gates and fences in and around the site		●
4	To construct the parking lot	(●)	(●)
5	To construct roads		
	1) Within the site	(●)	(●)
	2) Outside the site		●
6	To construct the buildings	●	
7	To provide facilities for the distribution of electricity, water supply, drainage and other incidental facilities		
	1) Electricity		
	a. The distributing line to the site (up to the facilities to be constructed)		●
	b. The drop wiring and internal wiring within the site	●	
	c. The Main circuit breaker and transformer	●	
	2) Water Supply		
	a. The city water distribution main to the site (up to the facilities to be constructed)		●
	b. The supply system within the site (receiving and elevated tanks)	●	
	3) Drainage		
	a. The city drainage main (for storm, sewer and others) to the site		●
	b. The drainage system (for toilet sewer, ordinary waste, storm drainage and others) within the site (up to the existing drainage line)	●	
	4) Gas Supply		
	a. The city gas main to the site	N/A	N/A
	b. The gas supply system within the site	N/A	N/A
	5) Telephone System		
	a. The telephone trunk line to the main distribution frame/panel (MDF) of the building		●
	b. The MDF and the extension after the frame/panel	●	
	6) Furniture and Equipment		
	a. General furniture		●
	b. Project equipment	●	
8	To bear the following commissions to the Japanese foreign exchange bank for the banking services based upon the B/A		
	1) Advising commission of A/P		●
	2) Payment commission		●
9	To ensure unloading and customs clearance at port of disembarkation in recipient country		
	1) Marine (Air) transportation of the products from Japan to the recipient country	●	
	2) Tax exemption and custom clearance of the products at the port of disembarkation		●
	3) Internal transportation from the port of disembarkation to the project site	●	
10	To accord Japanese nationals whose services may be required in connection with the supply of the products and the services under the verified contract such facilities as may be necessary for their entry into the recipient country and stay therein for the performance of their work.		●
11	To exempt Japanese nationals from customs duties, internal taxes and other fiscal levies which may be imposed in the recipient country with respect to the supply of the products and services under the verified contracts.		●
12	To maintain and use properly and effectively the facilities constructed and equipment provided under the Grant		●
13	To bear all the expenses, other than those to be borne by the Grant, necessary for construction of the facilities as well as for the transportation and installation of the equipment		●
14	To bear all the expenses, for training of the users and technicians to operate and maintain the facilities and equipments properly and effectively.		●