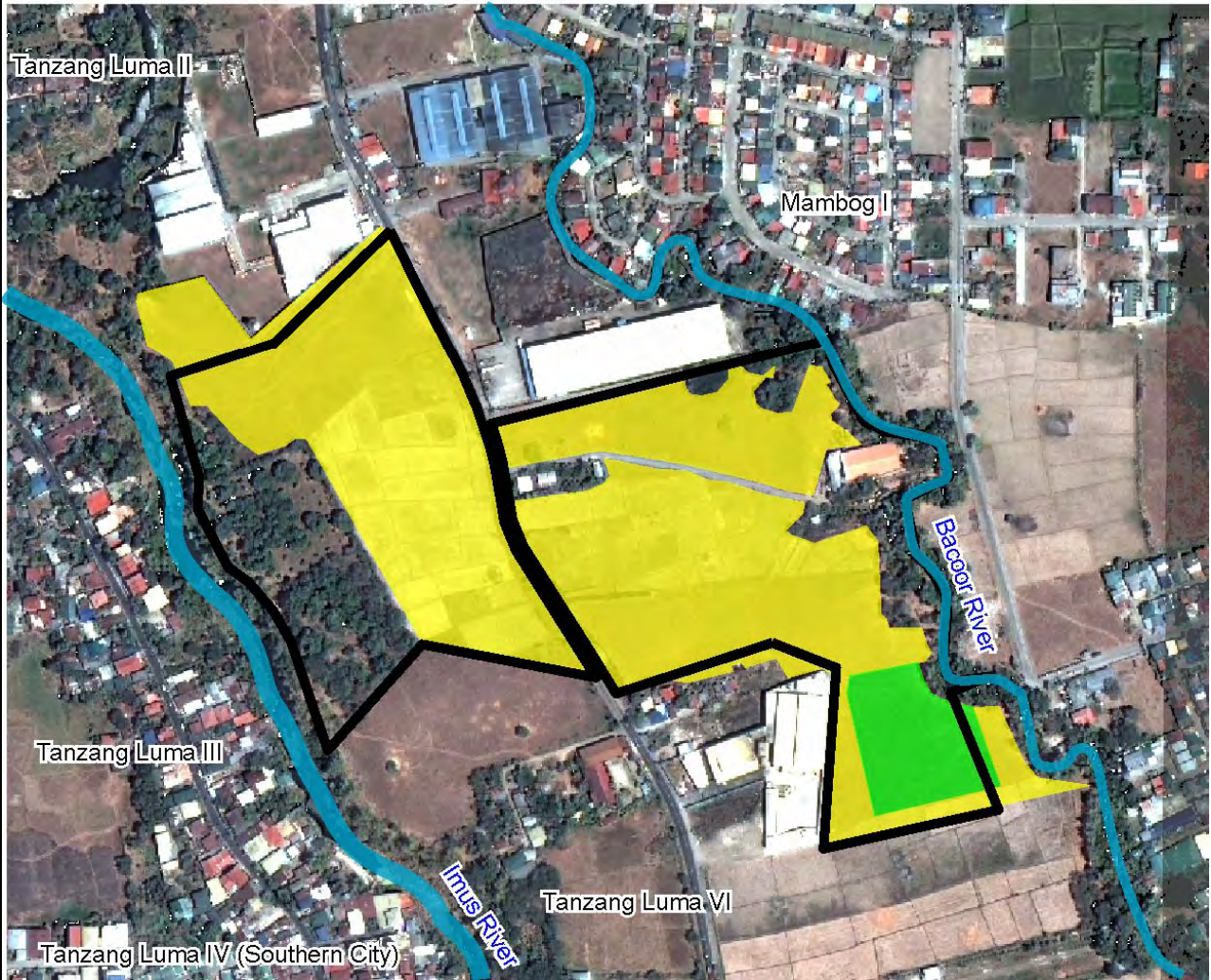
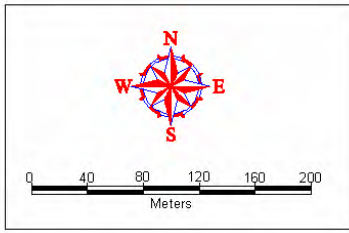


THE STUDY ON
 COMPREHENSIVE FLOOD MITIGATION
 FOR CAVITE LOWLAND AREA

CTI Engineering International Co., Ltd.
 Nippon Koei Co., Ltd

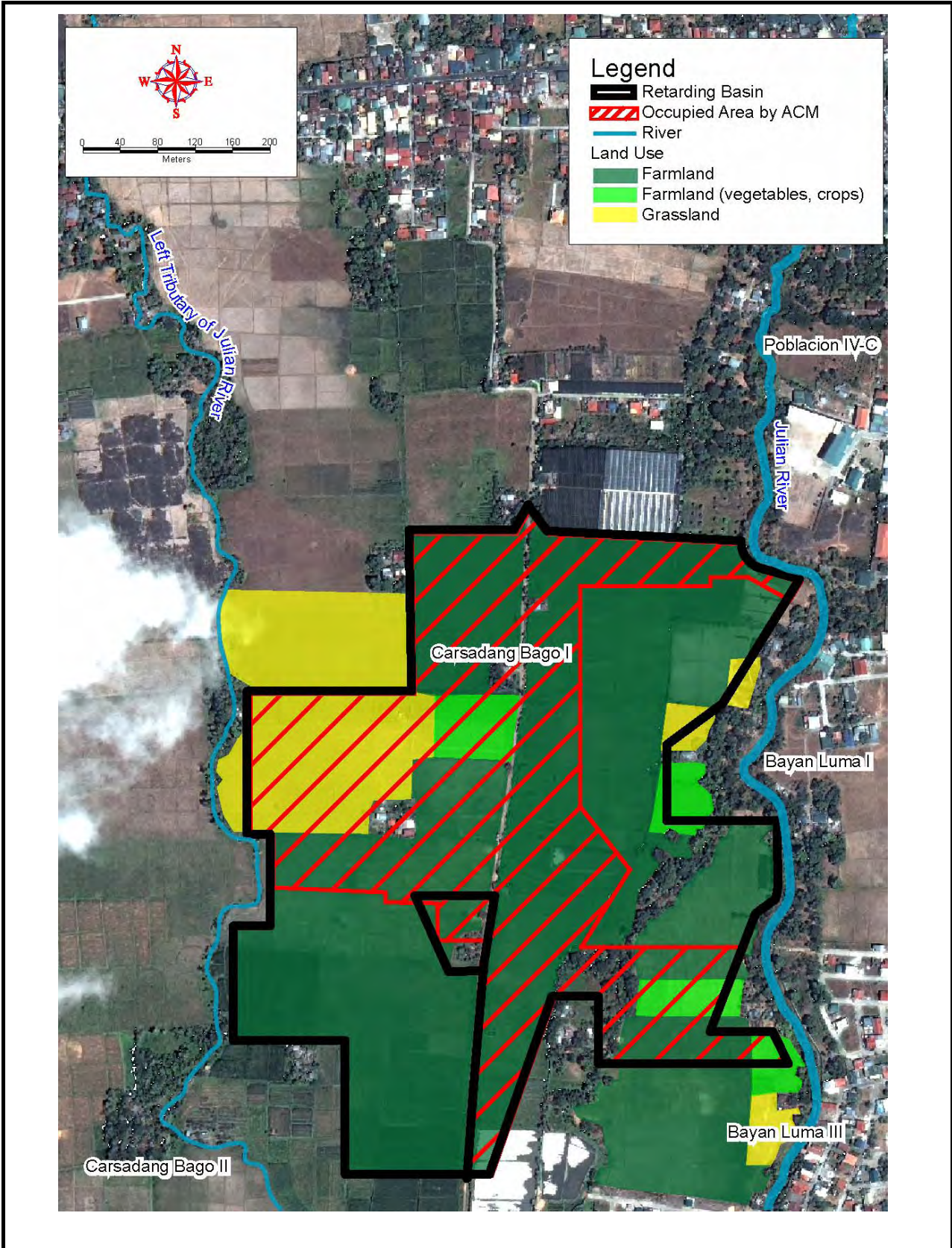
Fig. 2.31
 Present Land Use Classification
 in Proposed Imus Retarding Basin (I1) Site



THE STUDY ON
 COMPREHENSIVE FLOOD MITIGATION
 FOR CAVITE LOWLAND AREA

CTI Engineering International Co., Ltd.
 Nippon Koei Co., Ltd

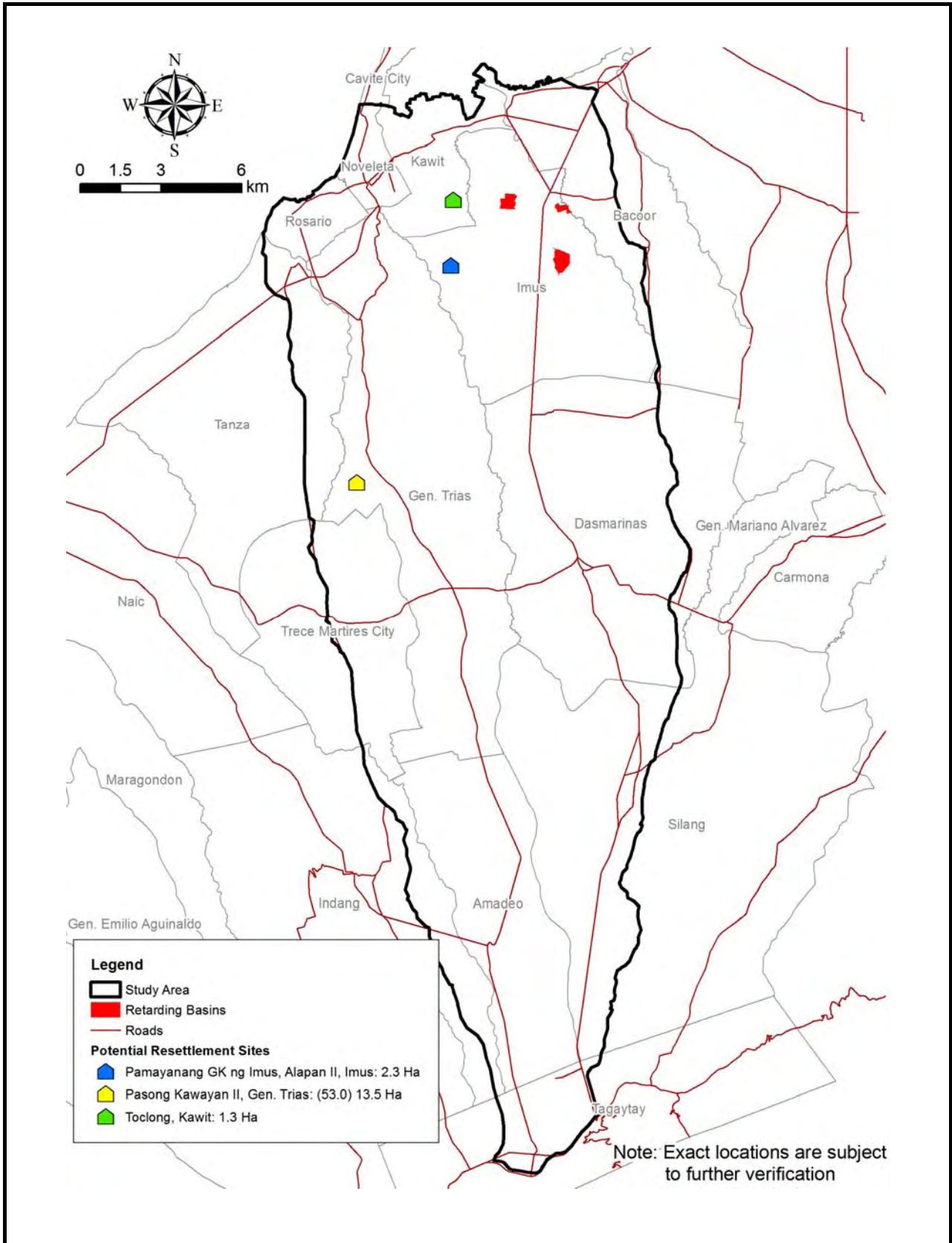
Fig. 2.32
 Present Land Use
 in Proposed Bacoor Retarding Basin (B4) Site



THE STUDY ON
 COMPREHENSIVE FLOOD MITIGATION
 FOR CAVITE LOWLAND AREA

CTI Engineering International Co., Ltd.
 Nippon Koei Co., Ltd

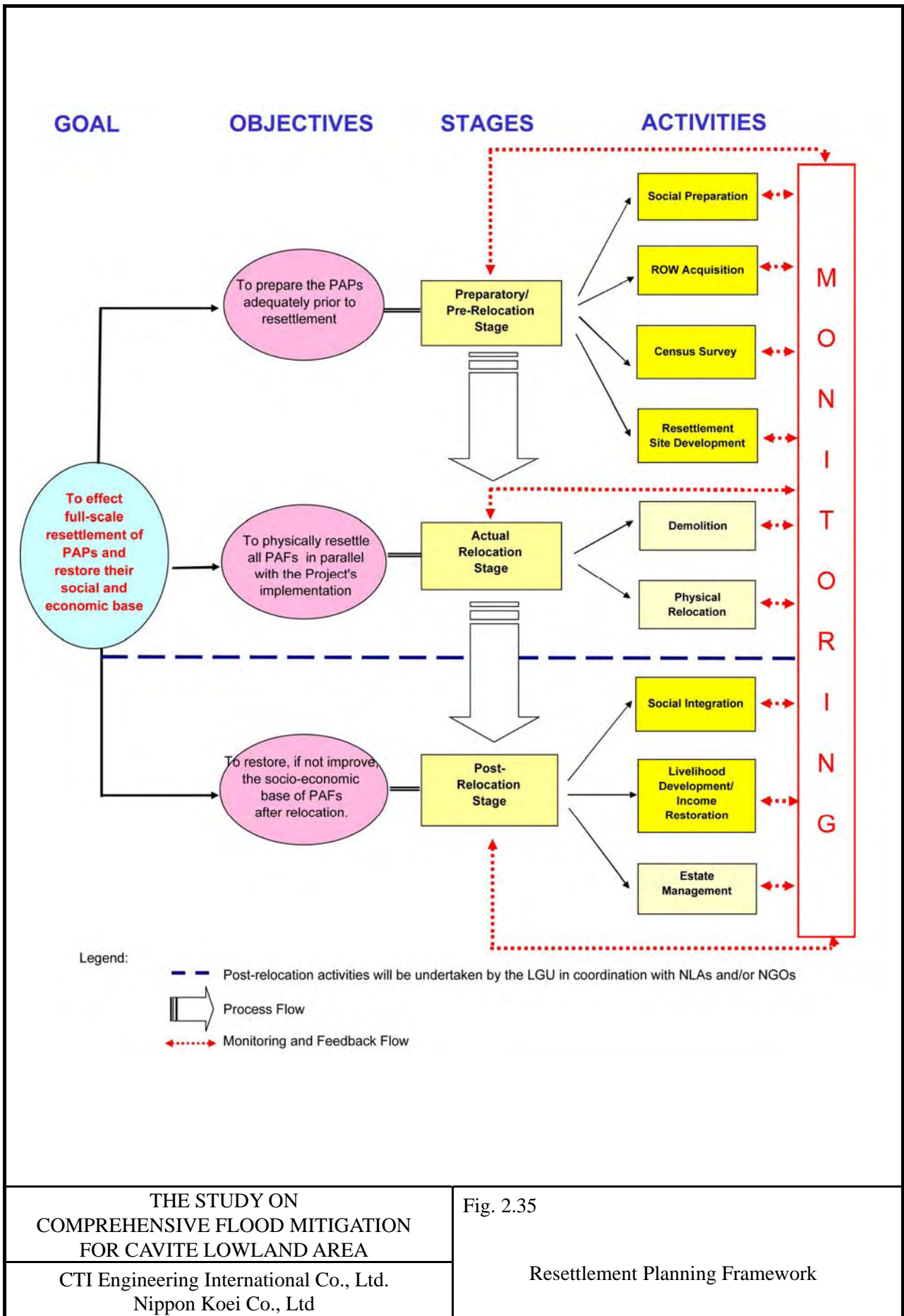
Fig. 2.33
 Present Land Use
 in Proposed Julian Retarding Basin (I1) Site



THE STUDY ON
 COMPREHENSIVE FLOOD MITIGATION
 FOR CAVITE LOWLAND AREA

CTI Engineering International Co., Ltd.
 Nippon Koei Co., Ltd

Fig. 2.34
 Potential Resettlement Sites



GK Resettlement Site in Brgy. Alapan II, Imus



GK Resettlement Site in Brgy. Aguado, Trece Martires City

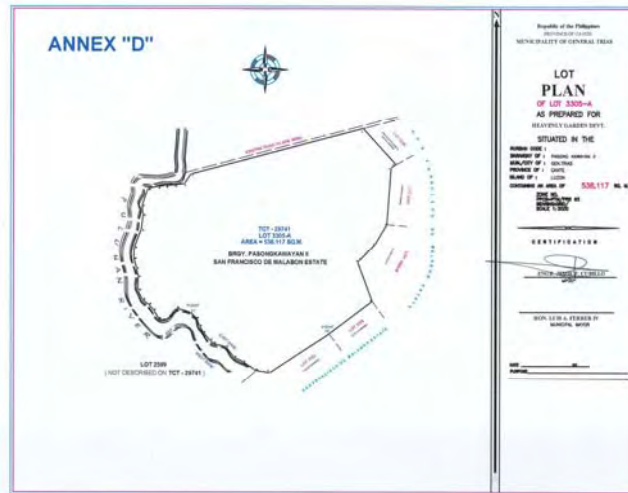


NHA-GK Resettlement Site in Southville Subd., Brgy. Aguado, Trece Martires City



THE STUDY ON
 COMPREHENSIVE FLOOD MITIGATION
 FOR CAVITE LOWLAND AREA
 CTI Engineering International Co., Ltd.
 Nippon Koei Co., Ltd

Fig. 2.36
 Gawad Kalinga Resettlement Sites



THE STUDY ON
 COMPREHENSIVE FLOOD MITIGATION
 FOR CAVITE LOWLAND AREA
 CTI Engineering International Co., Ltd.
 Nippon Koei Co., Ltd

Fig. 2.37
 Proposed Shelter Development Plan
 in Pasong Kawayan II

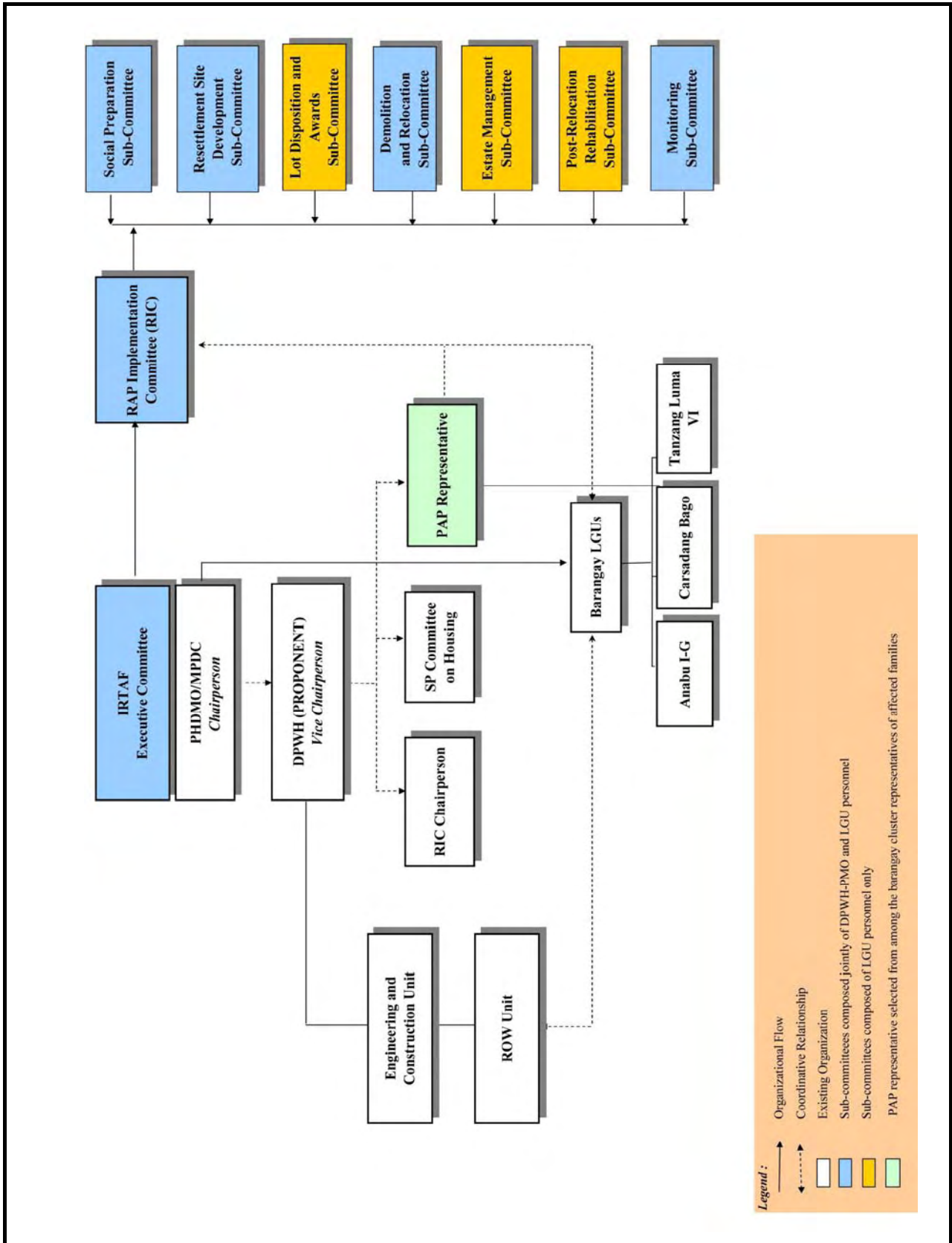


THE STUDY ON
COMPREHENSIVE FLOOD MITIGATION
FOR CAVITE LOWLAND AREA

CTI Engineering International Co., Ltd.
Nippon Koei Co., Ltd

Fig. 2.38

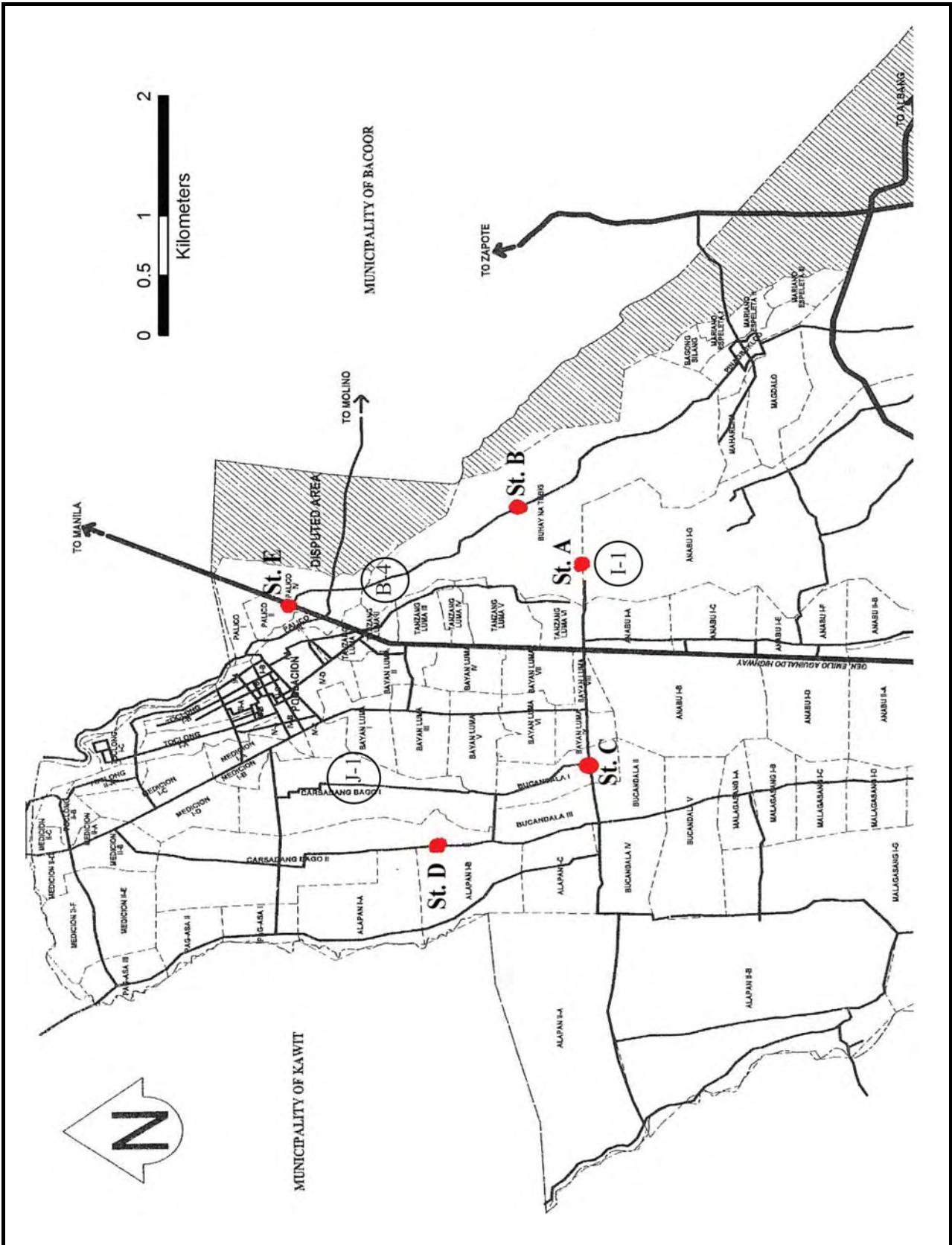
Techno-Livelihood Caravan (PCLEDO)



THE STUDY ON
 COMPREHENSIVE FLOOD MITIGATION
 FOR CAVITE LOWLAND AREA

CTI Engineering International Co., Ltd.
 Nippon Koei Co., Ltd

Fig. 2.39
 Proposed Organizational Structure
 of the Inter-agency Resettlement Task Force (IRTAF)



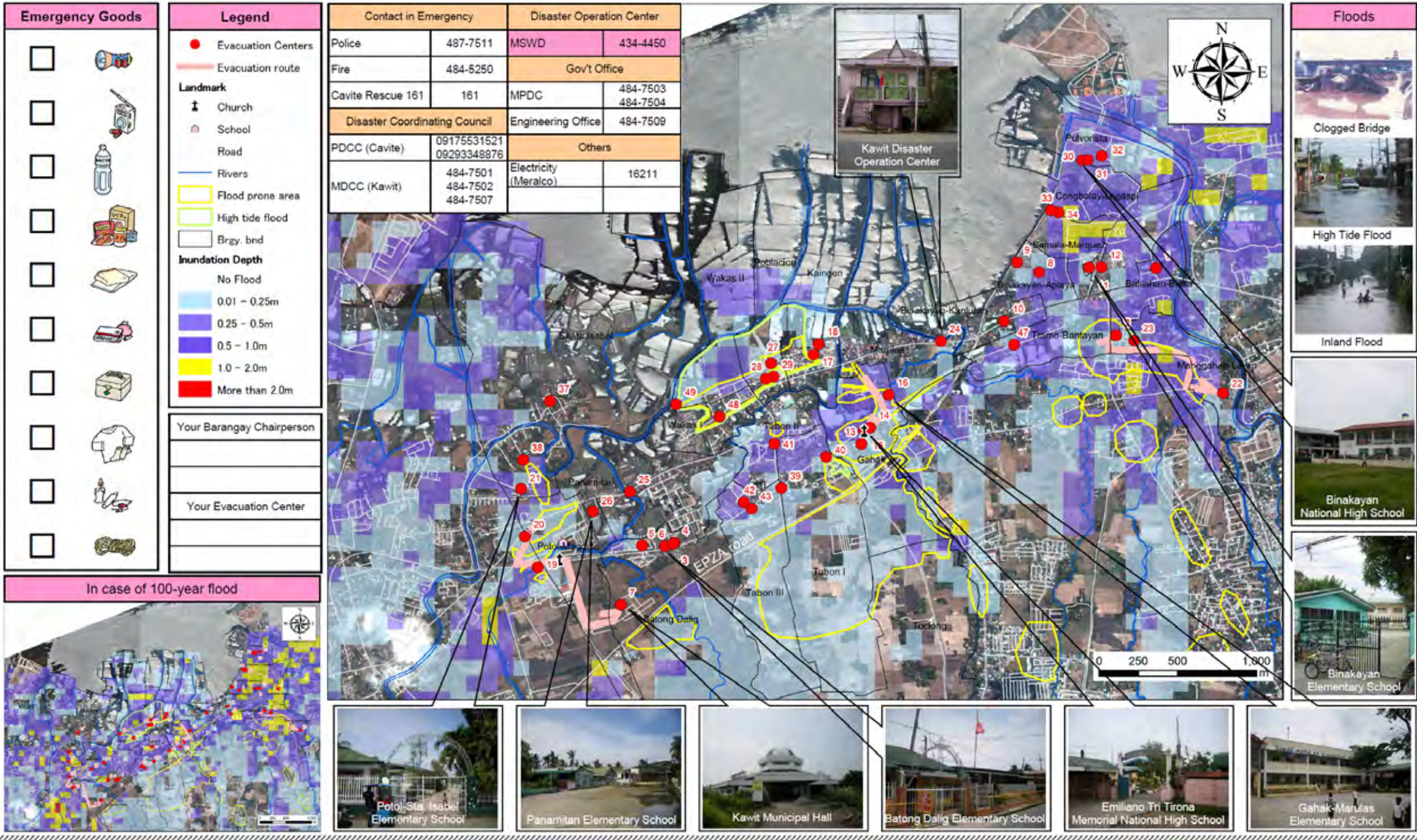
THE STUDY ON
 COMPREHENSIVE FLOOD MITIGATION
 FOR CAVITE LOWLAND AREA
 CTI Engineering International Co., Ltd.
 Nippon Koei Co., Ltd

Fig. 2.40
 Location of Traffic Observation

Draft Flood Hazard Map (Kawit)

Hazard Map: A flood hazard map is made aiming at a safe and quick evacuation. This map shows the simulated inundation area and depth of 5-year flood and also provides the information of evacuation centers. For residents, please use it for daily preparedness against floods and evacuation activities such as confirmation of the inundation situation around your house, evacuation centers and the route for your family in this map.
5-year flood: flood of scale that occurs about once every 5 years

What to do in the event of Flood:
 ✓ Monitor the weather news on the radio or television.
 ✓ Food, drinking water, batteries and first aid kits should be stored.
 ✓ If there's already a flood, shut down the main power switch in you house.
 ✓ Children, old and sick people should evacuate earlier.



Front Page

THE STUDY ON
 COMPREHENSIVE FLOOD MITIGATION
 FOR CAVITE LOWLAND AREA
 CTI Engineering International Co., Ltd.
 Nippon Koei Co., Ltd

Fig. 3.1 (1/2)

Flood Hazard Map (Kawit)

Evacuation Centers (Kawit)

Barangay	Evacuation Centers	
Balsahan-Bisita	1	Balsahan-Bisita Barangay Hall
	2	Philippine Independent Church
Batong Dalig	3	Batong Dalig Barangay Hall
	4	Batong Dalig Chapel
	5	Batong Dalig Day Care Center
	6	Batong Dalig Elementary School
	7	Kawit Municipal Hall
Binakayan-Aplaya	8	Binakayan-Aplaya Barangay Hall
	9	Binakayan-Aplaya Day Care Center
Binakayan-Kanluran	10	Binakayan-Kanluran Barangay Hall
Congbalay-Legaspi	11	Binakayan Elementary School
	12	Congbalay-Legaspi Barangay Hall
Gahak	13	Emiliano Tria Tirona Memorial National High School
	14	Gahak Barangay Hall
	15	Gahak Chapel
	16	Gahak-Marulas Elementary School
Kaingen	17	Kaingen Barangay Hall & Day Care Center
	18	Kaingen Basketball Court
Magdalo (Putol)	19	Borja Hall / Putol Day Care Center
	20	Magdalo (Putol) Barangay Hall
	21	Potol-Sta. Isabel Elementary School
Manggahan-Lawin	22	Lanai Day Care Center
	23	Manggahan-Lawin Barangay Hall / Day Care Center
Marulas	24	Marulas Barangay Hall
Panamitan	25	Panamitan Day Care Center
	26	Panamitan Elementary School
Poblacion	27	Kaingen-Poblacion Elementary School
	28	Poblacion Barangay Hall
	29	St. Mary Magdalene Church
Pulvorista	30	Binakayan National High School
	31	F. Ilano Memorial School
	32	Pulvorista Barangay Hall
Samala-Marquez	33	Samala-Marquez Barangay Hall
	34	Samala-Marquez Day Care Center
San Sebastian	35	San Sebastian Barangay Hall
	36	San Sebastian Day Care Center
Sta. Isabel	37	Dr. Timoteo V. Encarnacio Memorial Basketball Court
	38	Sta. Isabel Barangay Hall
Tabon I	39	Tabon I Barangay Hall
	40	Tabon I Day Care Center
Tabon II	41	Tabon II Barangay Hall
Tabon III	42	Tabon III Barangay Hall
	43	Tabon III Day Care Center
Toclong	44	Toclong Barangay Hall
	45	Toclong Elementary School
	46	Toclong Elementary School & Toclong Day Care Center
Tramo Bantayan	47	Tramo Bantayan Barangay Hall & Day Care Center
Wakas I	48	Wakas I Barangay Hall & Day Care Center
Wakas II	49	Wakas II Day Care Center

Memos

Please discussed with your family and note the information.
Ex. Where to evacuate, how to evacuate, how to meet and contact each other, etc.

Back Page

THE STUDY ON
COMPREHENSIVE FLOOD MITIGATION
FOR CAVITE LOWLAND AREA

CTI Engineering International Co., Ltd.
Nippon Koei Co., Ltd

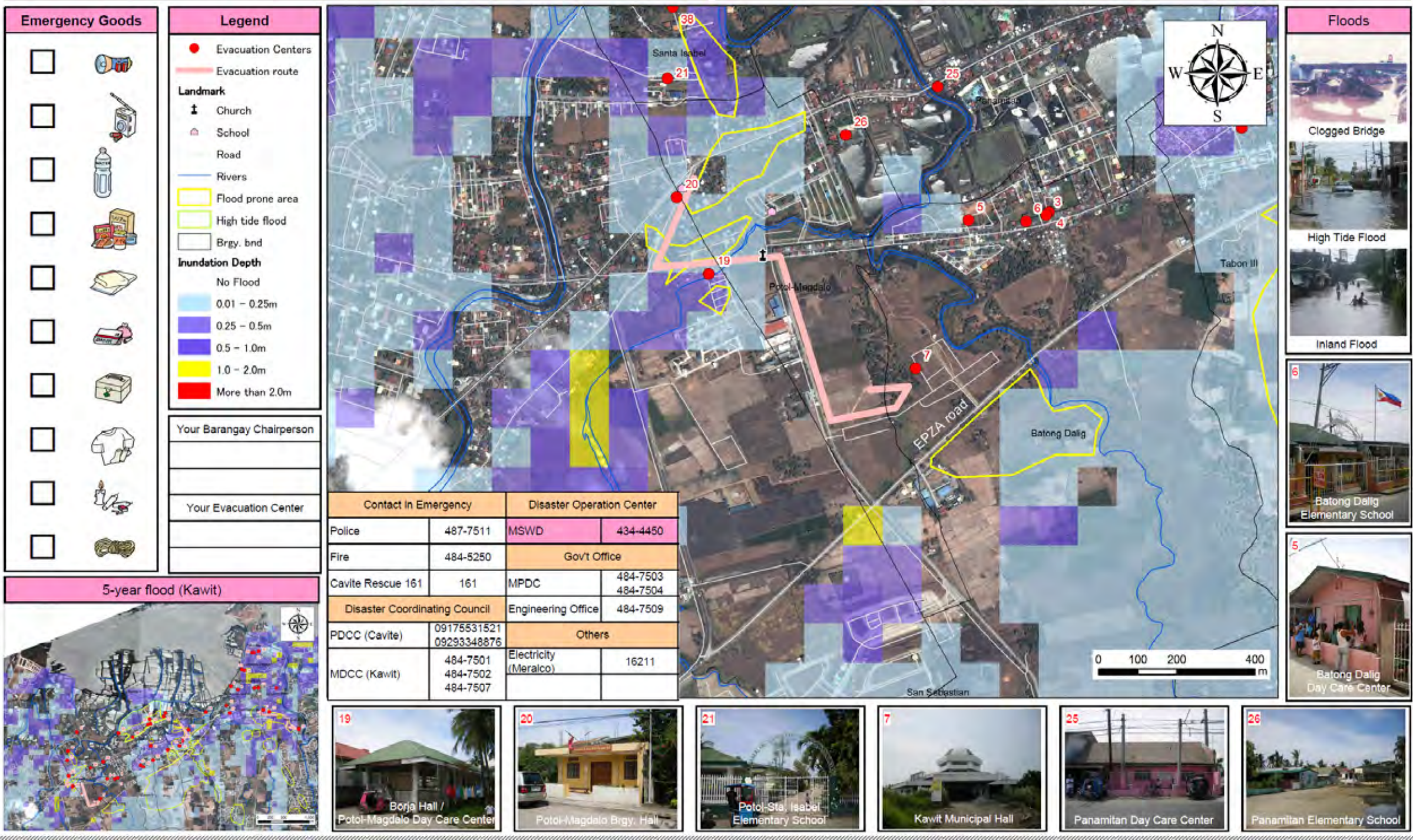
Fig. 3.1 (2/2)

Flood Hazard Map (Kawit)

Flood Hazard Map (Brgy. PotoI-Magdalo, Kawit)

Hazard Map: Ang flood hazard map ay ginawa para sa ligtas at mabilisang paglikas. Ipinapakita nito ang maaaring maging lawak at lalim ng isang **5-year flood**, gayundin ang mga impormasyon ukol sa mga **evacuation centers**. Ito'y inyong gamitin sa paghahanda laban sa baha at sa mga gawaing paglikas tulad ng pagsiguro sa kalagayan sa paligid ng inyong bahay, **evacuation centers** at sa maaaring daanan ng inyong pamilya.
5-year flood: bahang maaaring maganap ng isang beses sa loob ng limang taon

Mga dapat gawin sa oras ng pagbaha:
 Subaybayan ang ulat panahon sa radyo o telebisyon
 Mag-imbak ng pagkain, tubig inumin, baterya at mga gamit para sa agarang lunas.
 Patayin ang **main switch** ng kuryente kung mayroon nang baha.
 Maagang ilikas ang mga bata, matanda at ang mga maysakit.



Front Page

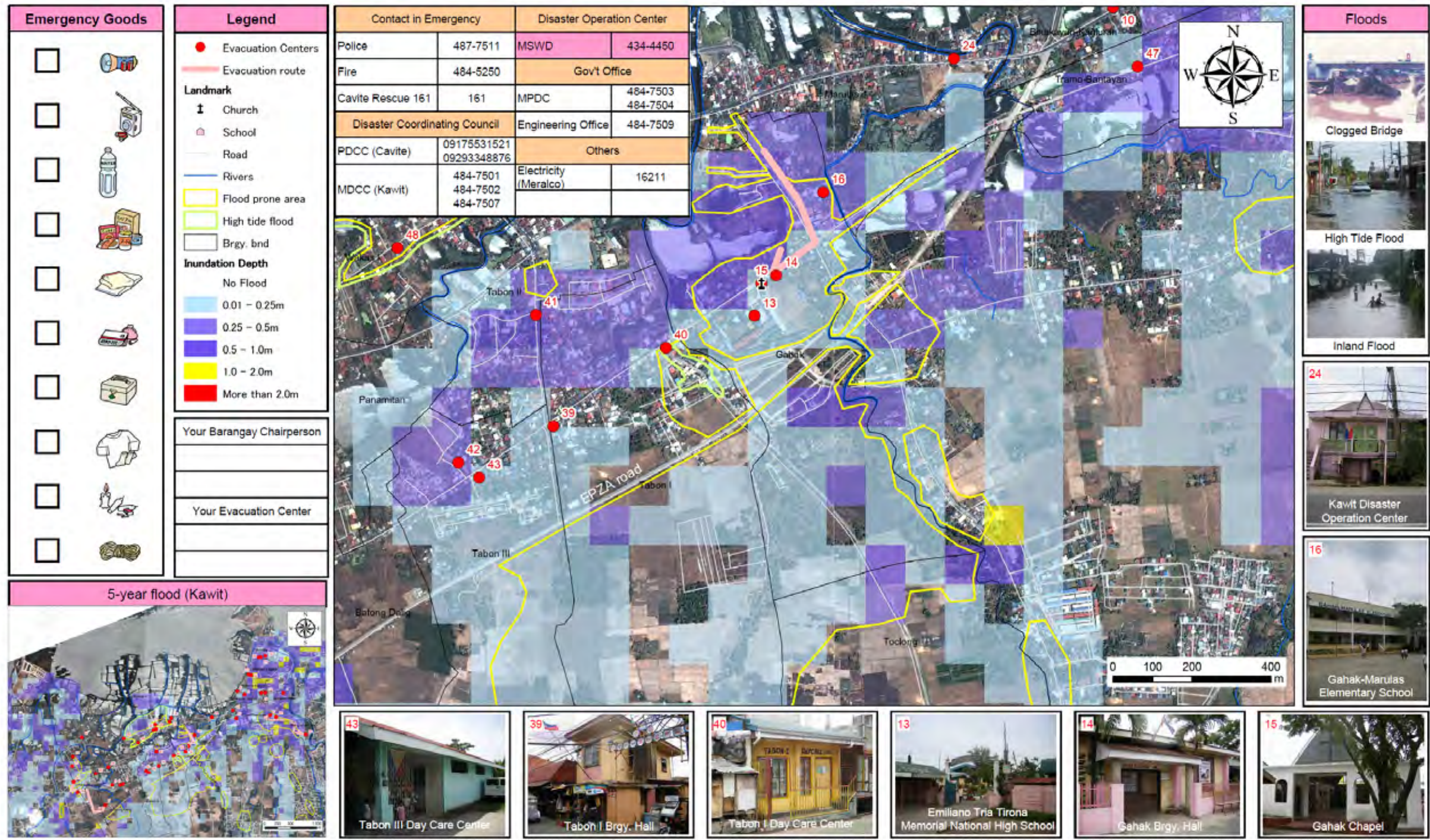
THE STUDY ON
 COMPREHENSIVE FLOOD MITIGATION
 FOR CAVITE LOWLAND AREA
 CTI Engineering International Co., Ltd.
 Nippon Koei Co., Ltd

Fig. 3.2 (1/3)
 Flood Hazard Map (Brgy. PotoI-Magdalo)

Flood Hazard Map (Brgy. Gahak, Kawit)

Hazard Map: Ang flood hazard map ay ginawa para sa ligtas at mabilisang paglikas. Ipinapakita nito ang maaaring maging lawak at lalim ng isang **5-year flood**, gayundin ang mga impormasyon ukol sa mga **evacuation centers**. Ito'y inyong gamitin sa paghahanda laban sa baha at sa mga gawaing paglikas tulad ng pagsiguro sa kalagayan sa paligid ng inyong bahay, **evacuation centers** at sa maaaring daanan ng inyong pamilya.
5-year flood: bahang maaaring maganap ng isang beses sa loob ng limang taon

Mga dapat gawin sa oras ng pagbaha:
 Subaybayan ang ulat panahon sa radyo o telebisyon
 Mag-imbak ng pagkain, tubig inumin, baterya at mga gamit para sa agarang lunas.
 Patayin ang **main switch** ng kuryente kung mayroon nang baha.
 Maagang ilikas ang mga bata, matanda at ang mga maysakit.



Front Page

THE STUDY ON
 COMPREHENSIVE FLOOD MITIGATION
 FOR CAVITE LOWLAND AREA

CTI Engineering International Co., Ltd.
 Nippon Koei Co., Ltd

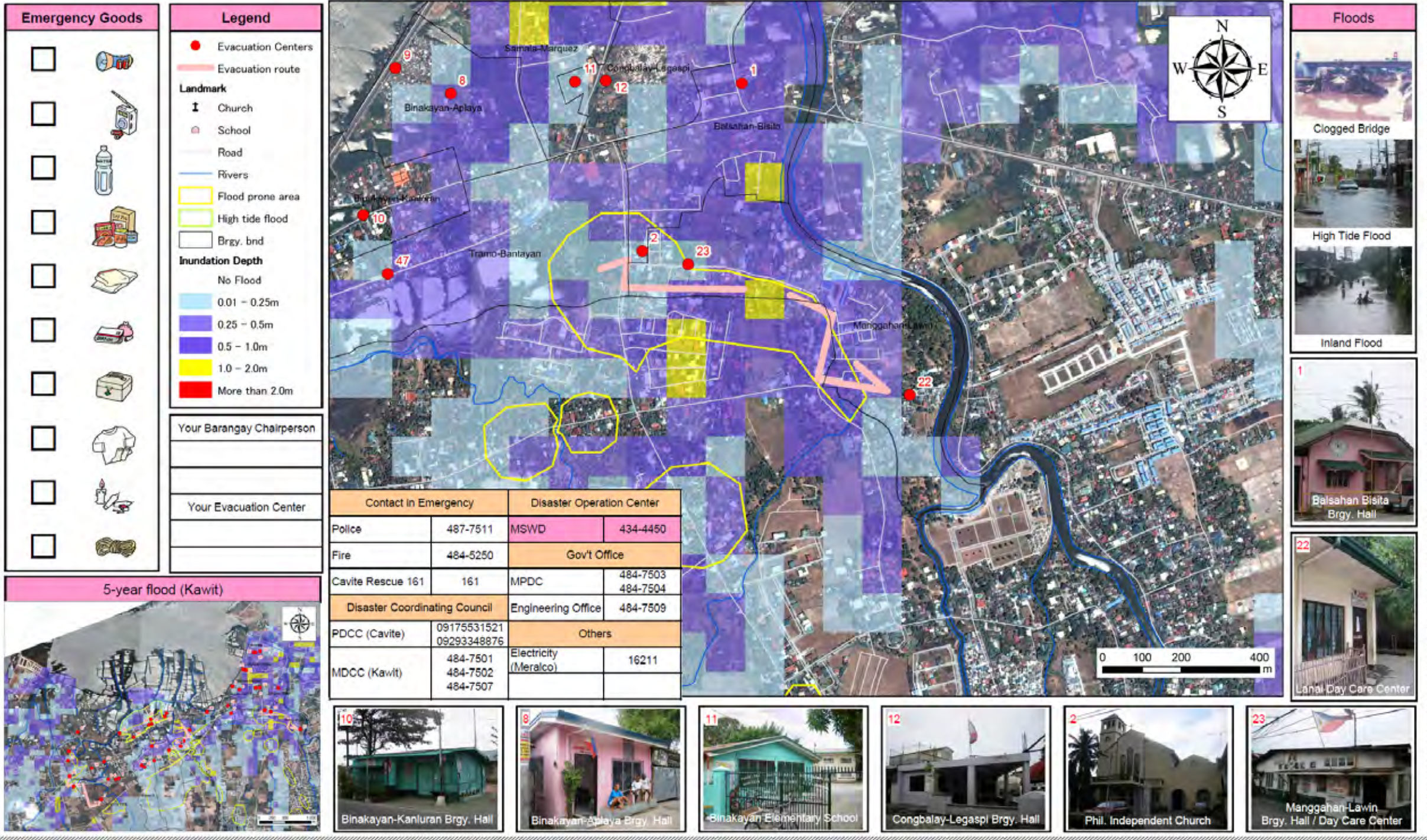
Fig. 3.2 (2/3)

Flood Hazard Map (Brgy. Gahak)

Flood Hazard Map (Brgy. Manggahan-Lawin, Kawit)

Hazard Map: Ang flood hazard map ay ginawa para sa ligtas at mabilisang paglikas. Ipinapakita nito ang maaaring maging lawak at lalim ng isang **5-year flood**, gayundin ang mga impormasyon ukol sa mga **evacuation centers**. Ito'y inyong gamitin sa paghahanda laban sa baha at sa mga gawaing paglikas tulad ng pagsiguro sa kalagayan sa paligid ng inyong bahay, **evacuation centers** at sa maaaring daanan ng inyong pamilya.
5-year flood: bahang maaaring maganap ng isang beses sa loob ng limang taon

Mga dapat gawin sa oras ng pagbaha:
 Subaybayan ang ulat panahon sa radyo o telebisyon
 Mag-imbak ng pagkain, tubig inumin, baterya at mga gamit para sa agarang lunas.
 Patayin ang *main switch* ng kuryente kung mayroon nang baha.
 Maagang ilikas ang mga bata, matanda at ang mga maysakit.



Front Page

THE STUDY ON
 COMPREHENSIVE FLOOD MITIGATION
 FOR CAVITE LOWLAND AREA
 CTI Engineering International Co., Ltd.
 Nippon Koei Co., Ltd

Fig. 3.2 (3/3)

Flood Hazard Map (Brgy. Manggahan-Lawin)