

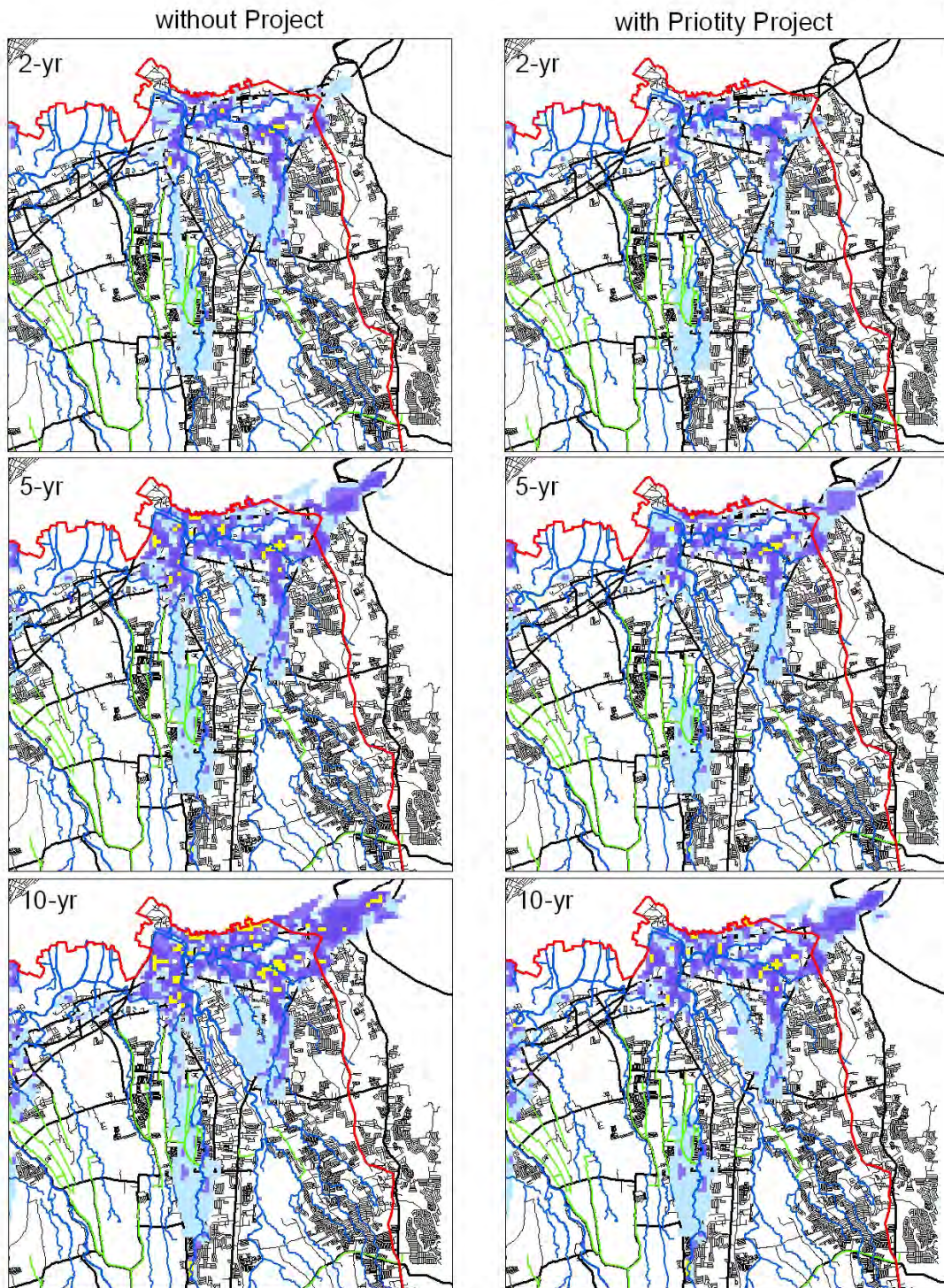
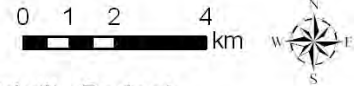
THE STUDY ON
 COMPREHENSIVE FLOOD MITIGATION
 FOR CAVITE LOWLAND AREA

CTI Engineering International Co., Ltd.
 Nippon Koei Co., Ltd.

Fig. 2.24

Policy on Available Disposal Sites and
 Areas for Excavated Materials of
 Construction of Retarding Basins

Present Condition (River Overflow Only)



Legend



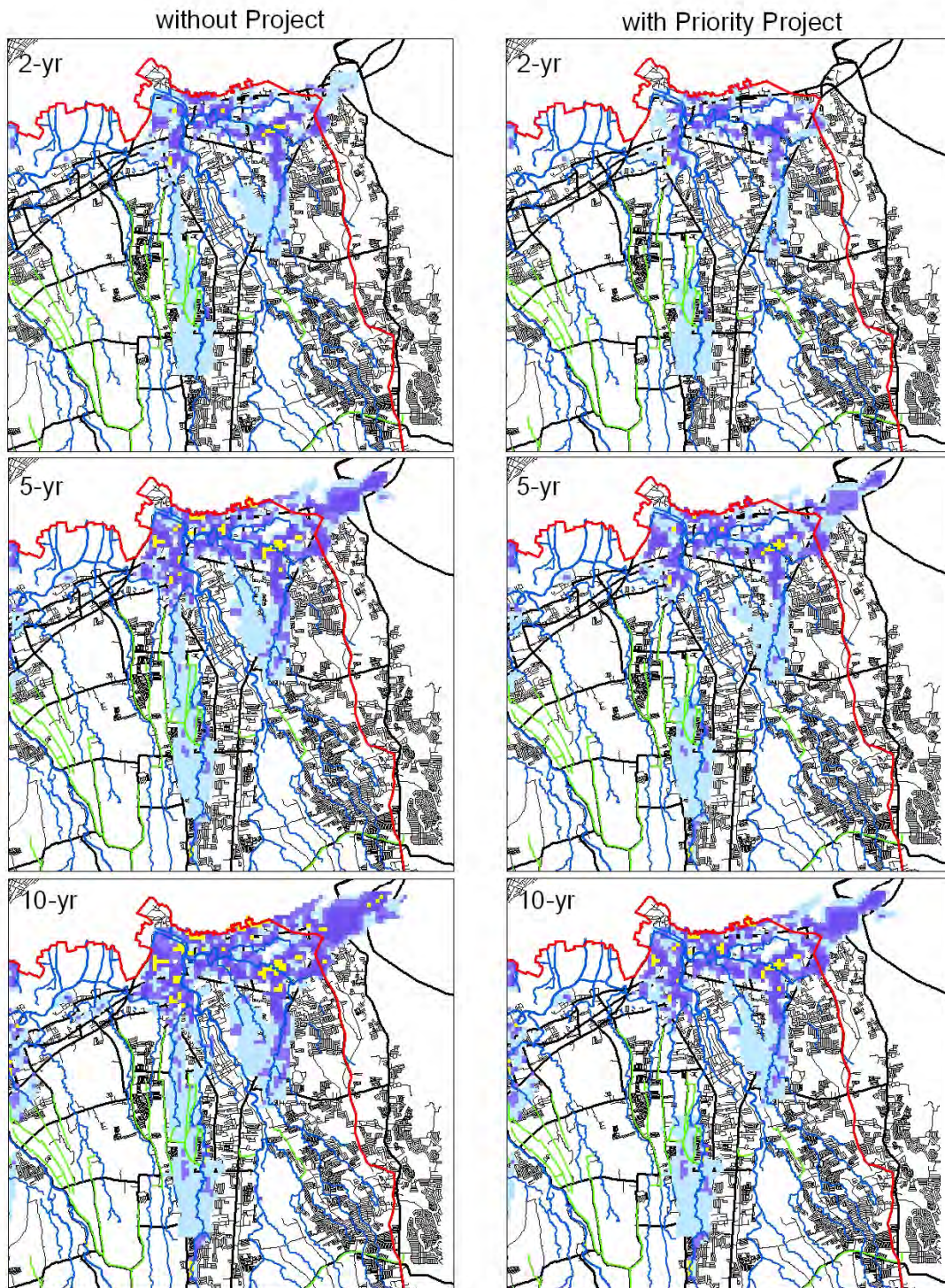
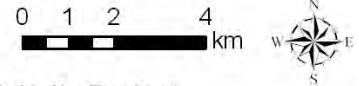
THE STUDY ON
COMPREHENSIVE FLOOD MITIGATION
FOR CAVITE LOWLAND AREA

CTI Engineering International Co., Ltd.
Nippon Koei Co., Ltd

Fig. 2.25 (1/2)

Simulation Result with Priority Project
in Imus River Basin

2020 with On-site Condition (River Overflow Only)



Legend

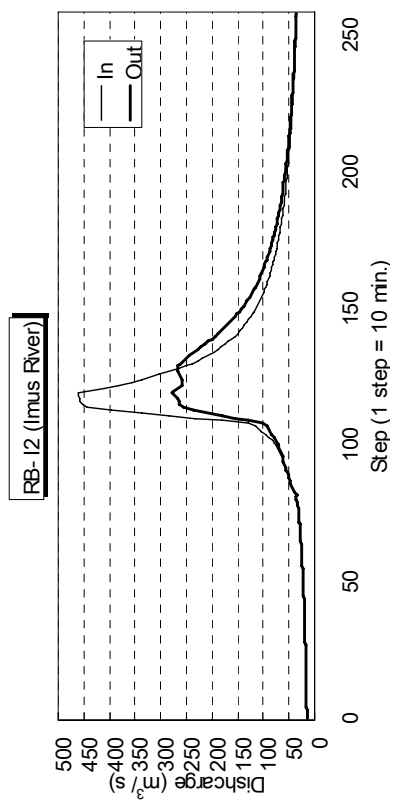


THE STUDY ON
COMPREHENSIVE FLOOD MITIGATION
FOR CAVITE LOWLAND AREA

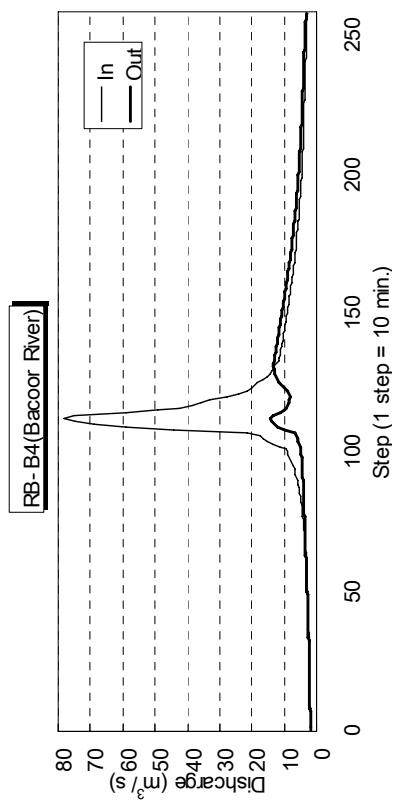
CTI Engineering International Co., Ltd.
Nippon Koei Co., Ltd

Fig. 2.25 (2/2)

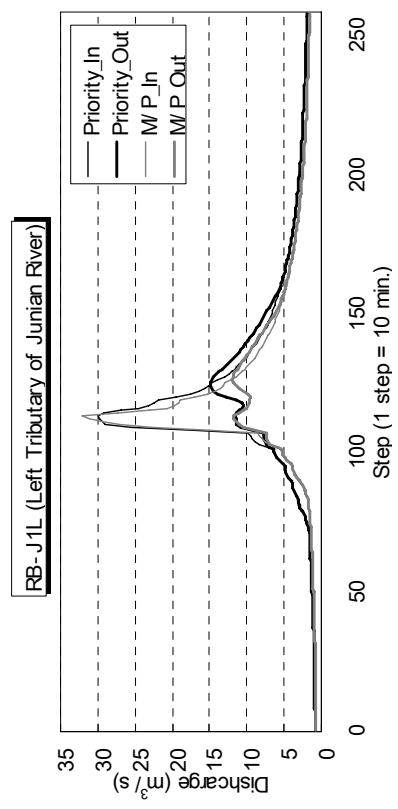
Simulation Result with Priority Project
In Imus River Basin



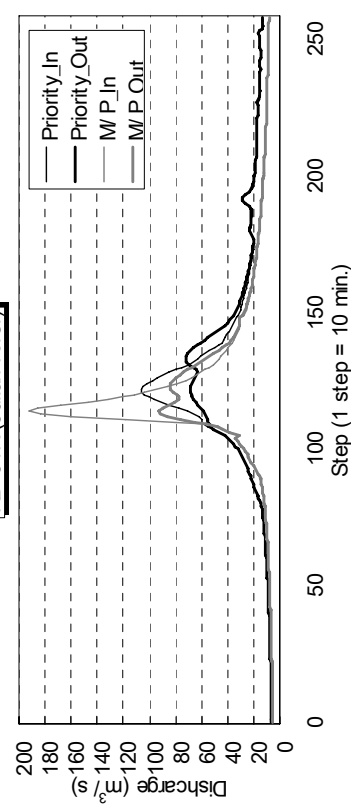
*:River hydraulic condition with priority project is same as with master plan



*:River hydraulic condition with priority project is same as with master plan



RB- J1L (Left Tributary of Junian River)



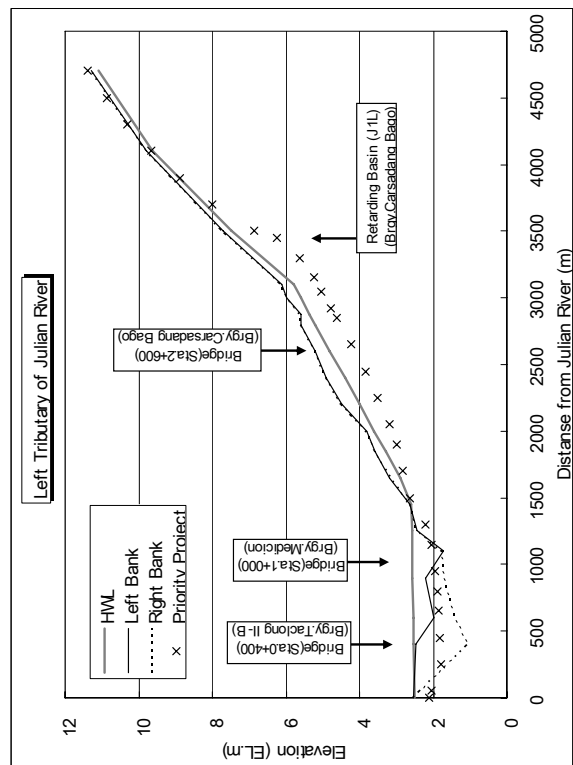
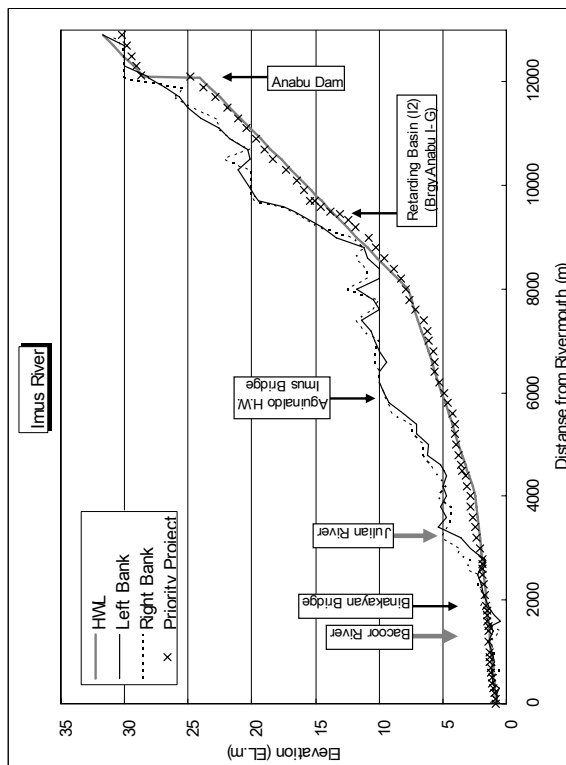
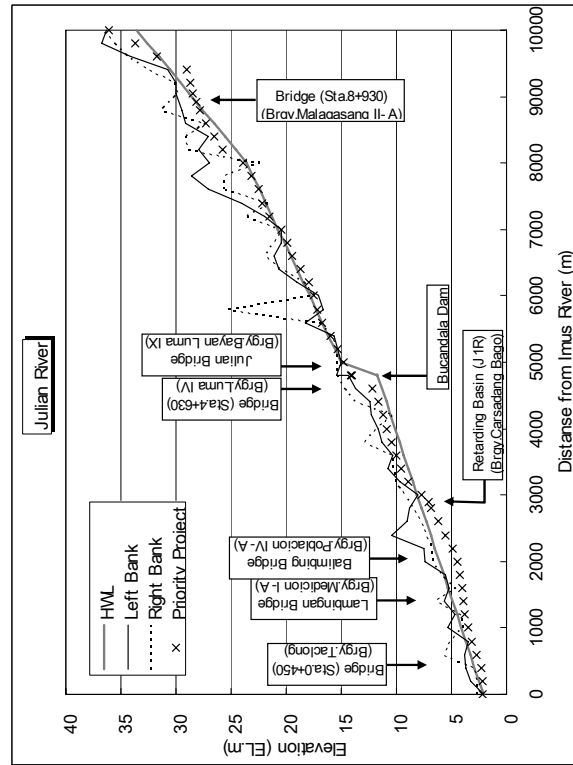
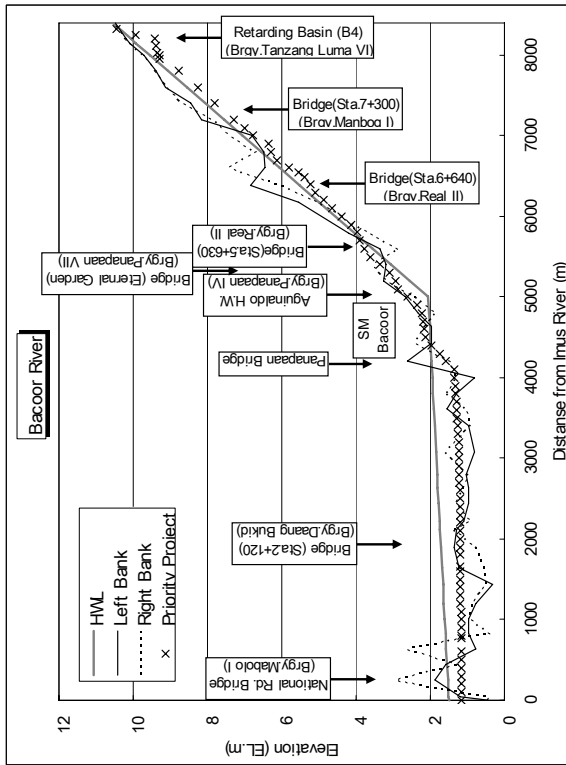
RB- J1R (Julian River)

THE STUDY ON
COMPREHENSIVE FLOOD MITIGATION
FOR CAVITE LOWLAND AREA

CTI Engineering International Co., Ltd.
Nippon Koei Co., Ltd

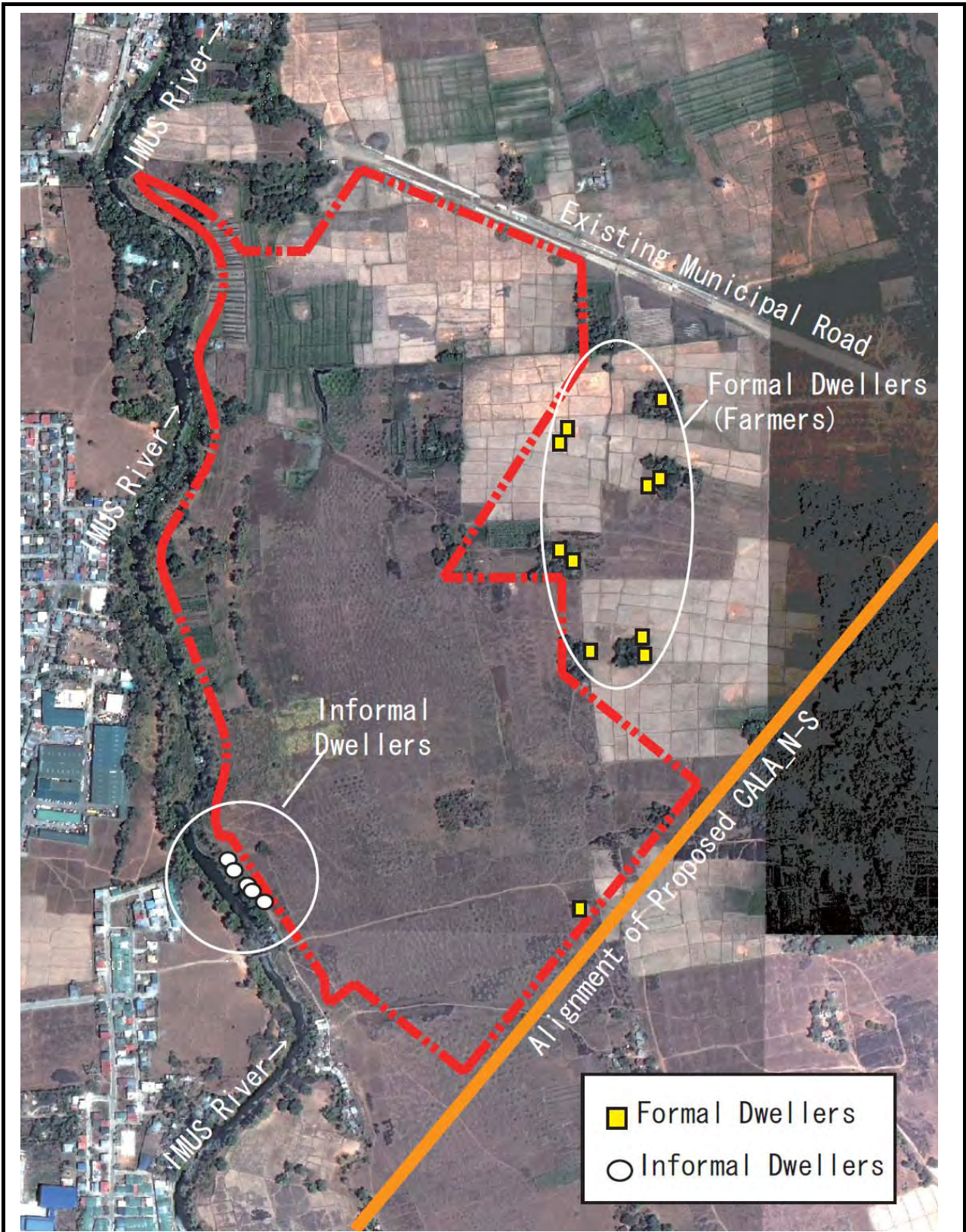
Fig. 2.26

Hydrograph at the point of Flood Retarding Basin



**THE STUDY ON
 COMPREHENSIVE FLOOD MITIGATION
 FOR CAVITE LOWLAND AREA**
 CTI Engineering International Co., Ltd.
 Nippon Koei Co., Ltd

Fig. 2.27
 Simulated Water Level Profile with Priority Project



THE STUDY ON
 COMPREHENSIVE FLOOD MITIGATION
 FOR CAVITE LOWLAND AREA

CTI Engineering International Co., Ltd.
 Nippon Koei Co., Ltd

Fig. 2.28

Present Land Use and Distribution of Houses
 in Proposed Imus Retarding Basin (I1) Site

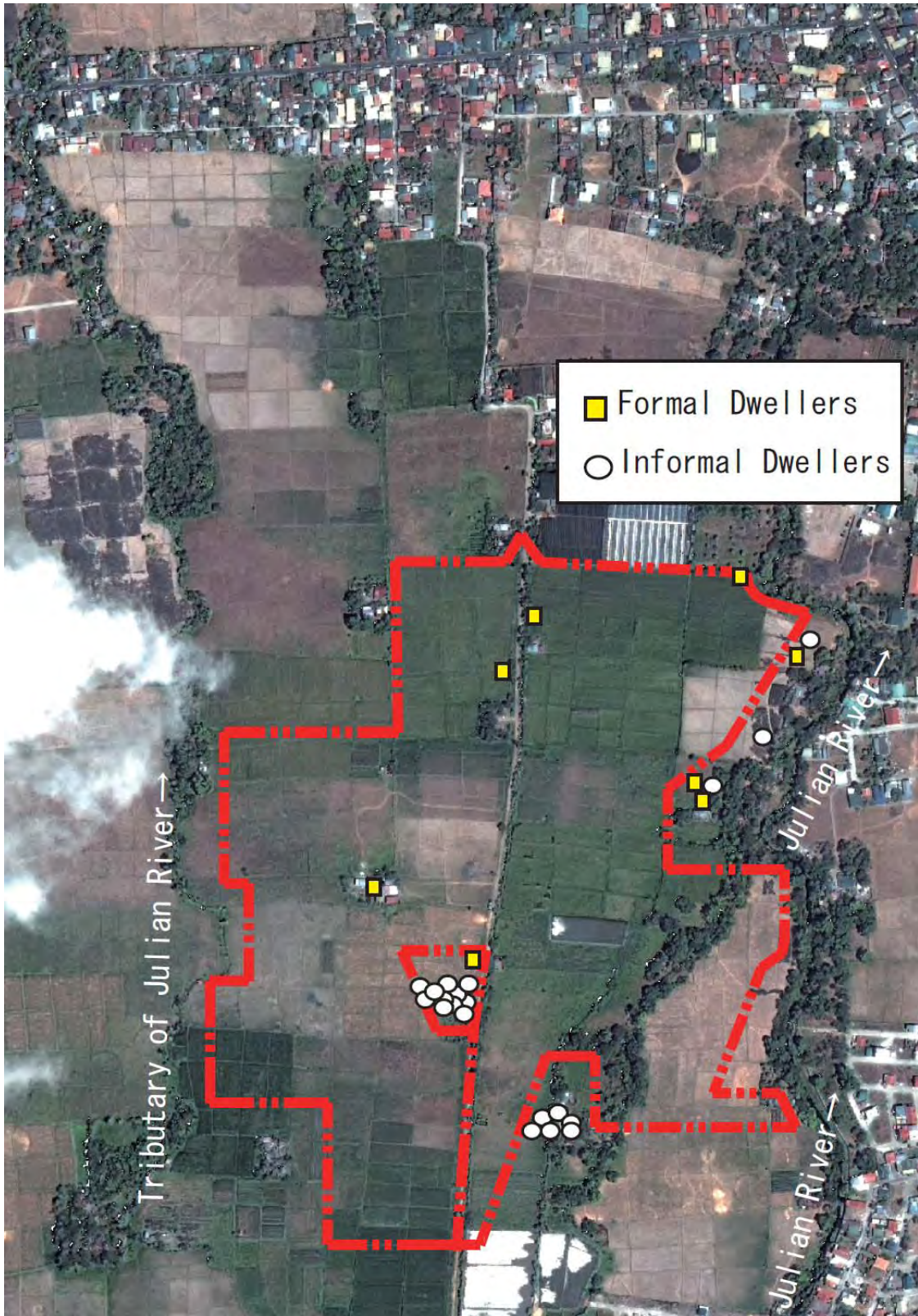


THE STUDY ON
 COMPREHENSIVE FLOOD MITIGATION
 FOR CAVITE LOWLAND AREA

CTI Engineering International Co., Ltd.
 Nippon Koei Co., Ltd

Fig. 2.29

Present Land Use and Distribution of Houses
 in Proposed Bacoor Retarding Basin (B4) Site



THE STUDY ON
 COMPREHENSIVE FLOOD MITIGATION
 FOR CAVITE LOWLAND AREA
 CTI Engineering International Co., Ltd.
 Nippon Koei Co., Ltd

Fig. 2.30
 Present Land Use and Distribution of Houses
 in Proposed Julian Retarding Basin (J1) Site