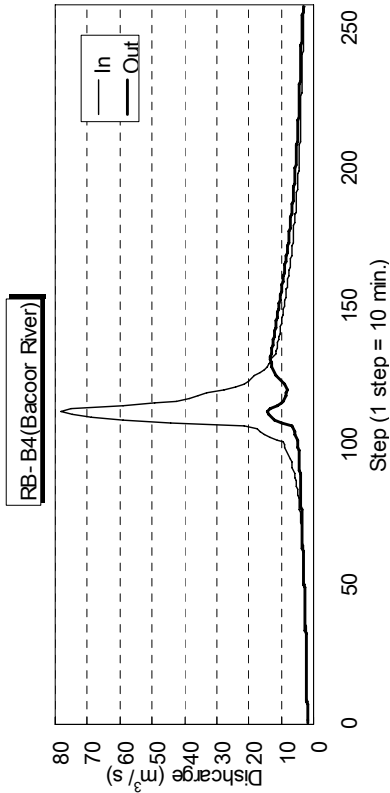
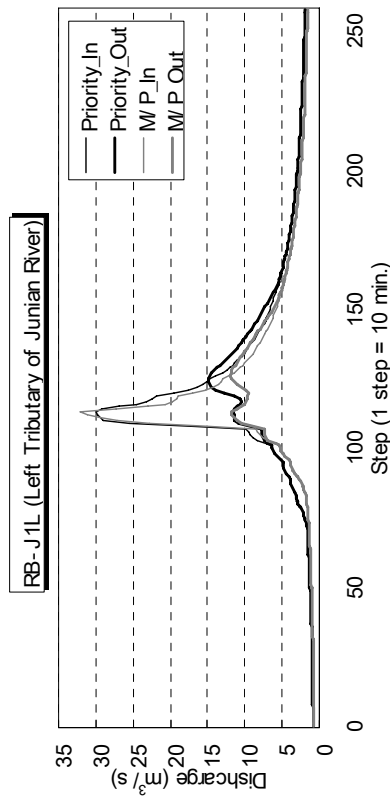


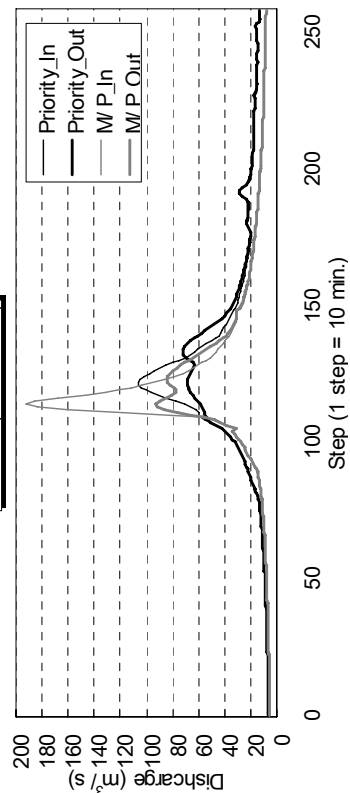
* : 河道状況はマスタープランと優先プロジェクトで同じである。



* : 河道状況はマスタープランと優先プロジェクトで同じである。



RB-J1R (Julian River)

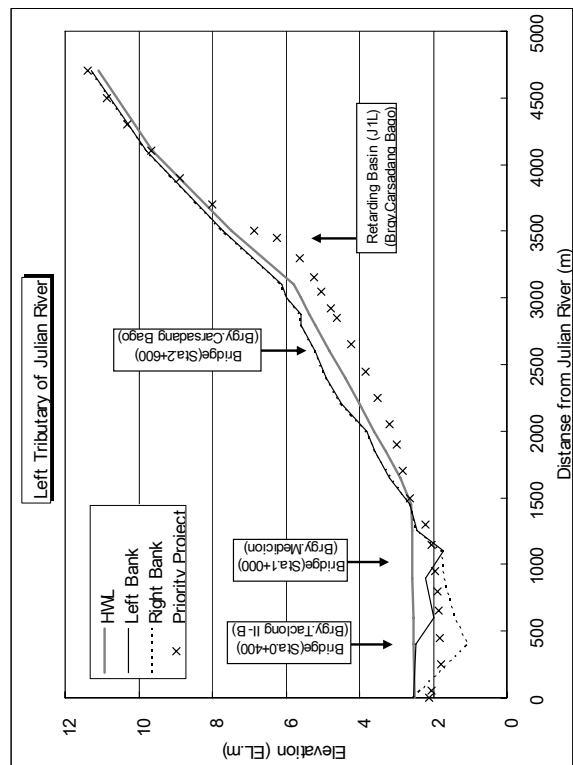
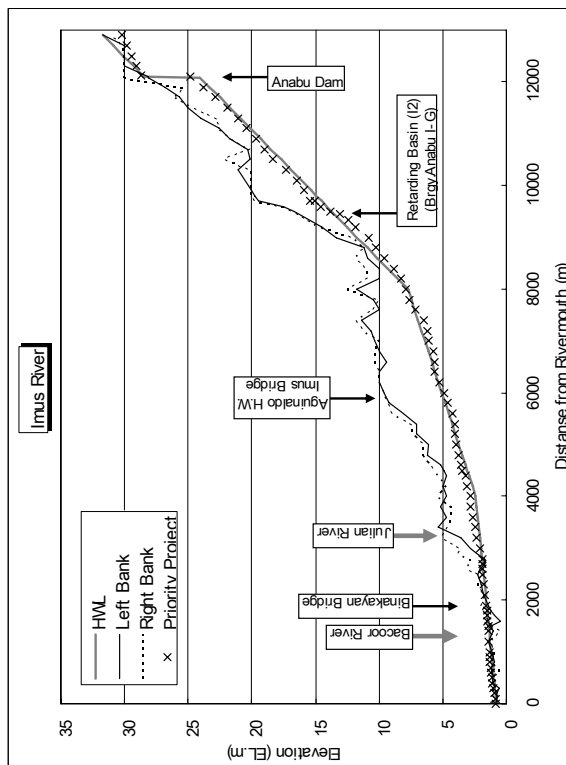
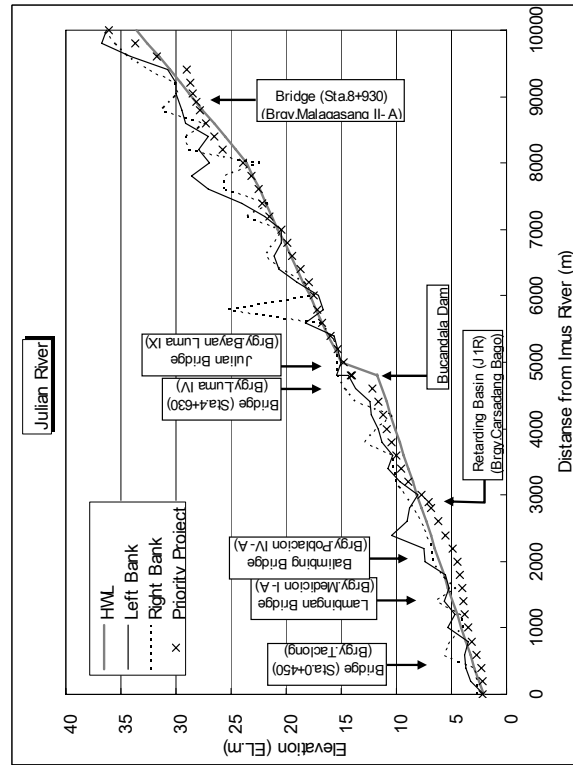
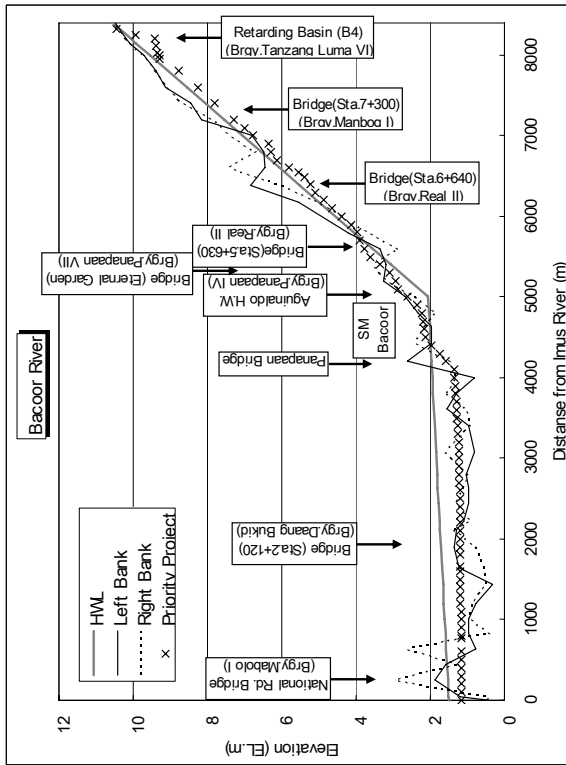


THE STUDY ON
COMPREHENSIVE FLOOD MITIGATION
FOR CAVITE LOWLAND AREA

CTI Engineering International Co., Ltd.
Nippon Koei Co., Ltd

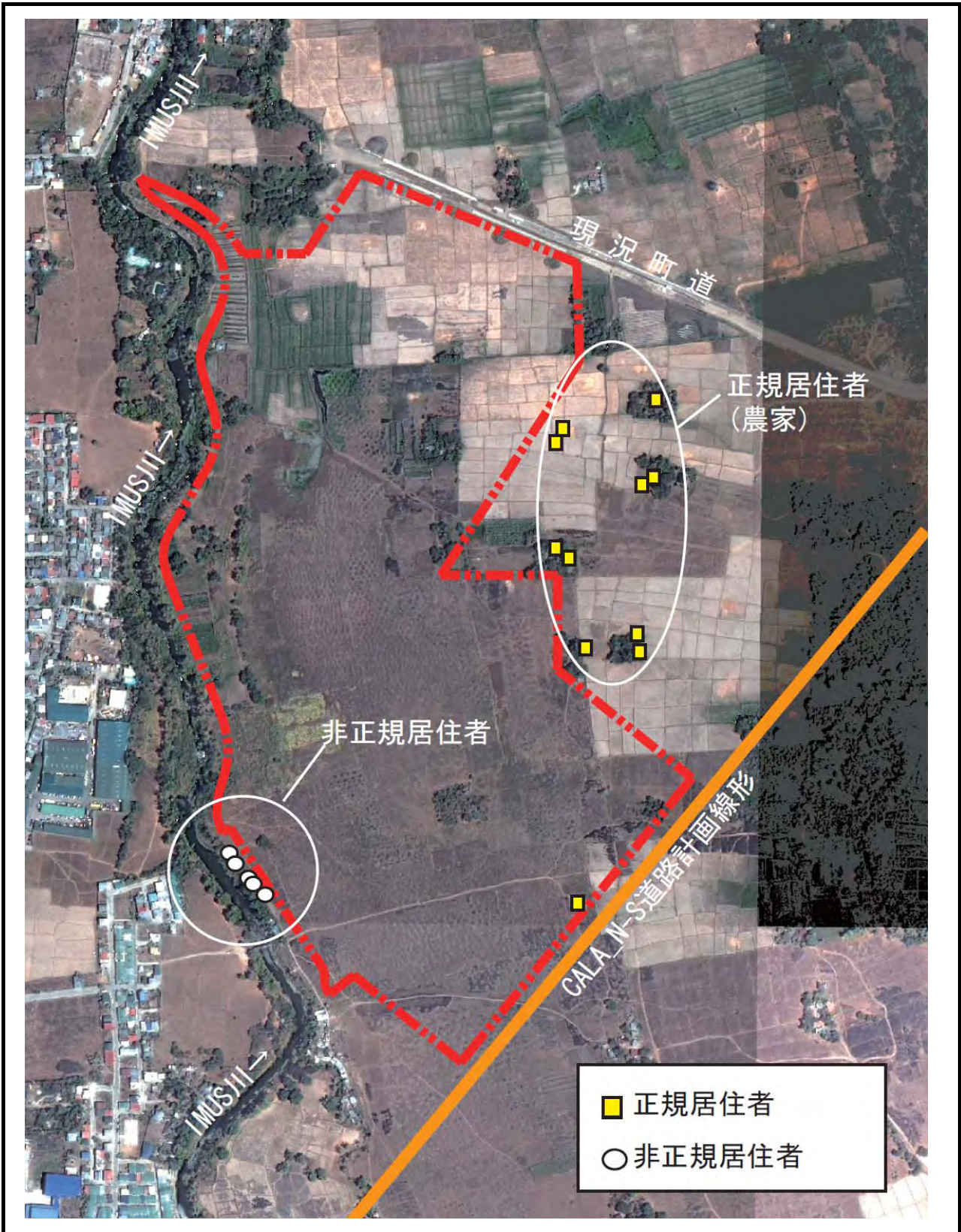
図 2.26

各遊水地地点における流量ハイドログラフ



THE STUDY ON
 COMPREHENSIVE FLOOD MITIGATION
 FOR CAVITE LOWLAND AREA
 CTI Engineering International Co., Ltd.
 Nippon Koei Co., Ltd

2.27
 対象河川の水位縦断面図
 (優先事業実施後の解析結果)



THE STUDY ON
COMPREHENSIVE FLOOD MITIGATION
FOR CAVITE LOWLAND AREA

CTI Engineering International Co., Ltd.
Nippon Koei Co., Ltd

図 2.28

Imus 遊水地 (I1)周辺の現況土地利用状況と
既存家屋位置

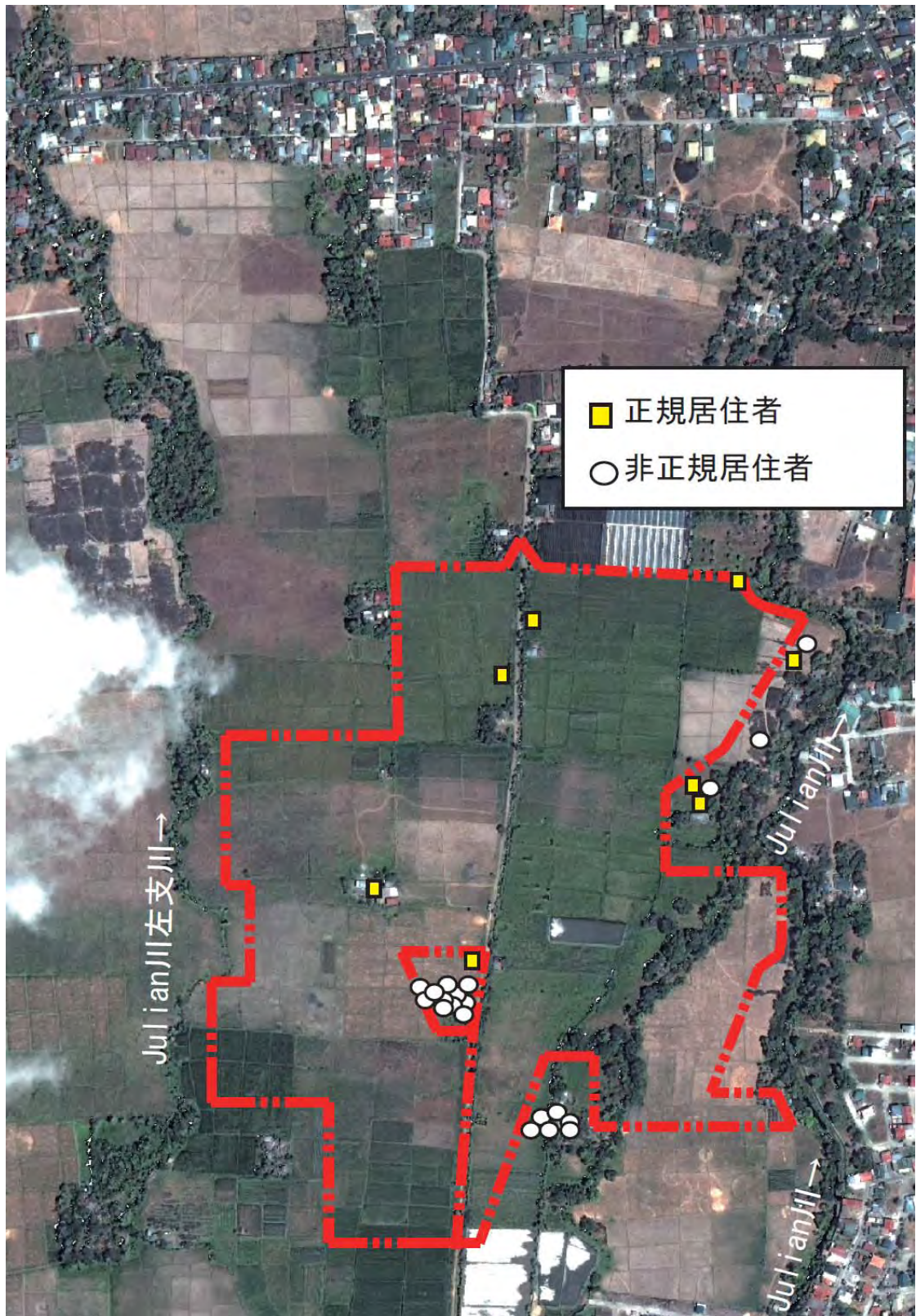


THE STUDY ON
 COMPREHENSIVE FLOOD MITIGATION
 FOR CAVITE LOWLAND AREA

CTI Engineering International Co., Ltd.
 Nippon Koei Co., Ltd

図 2.29

Bacoor 遊水地 (B4)周辺の現況土地利用状況と
 既存家屋位置

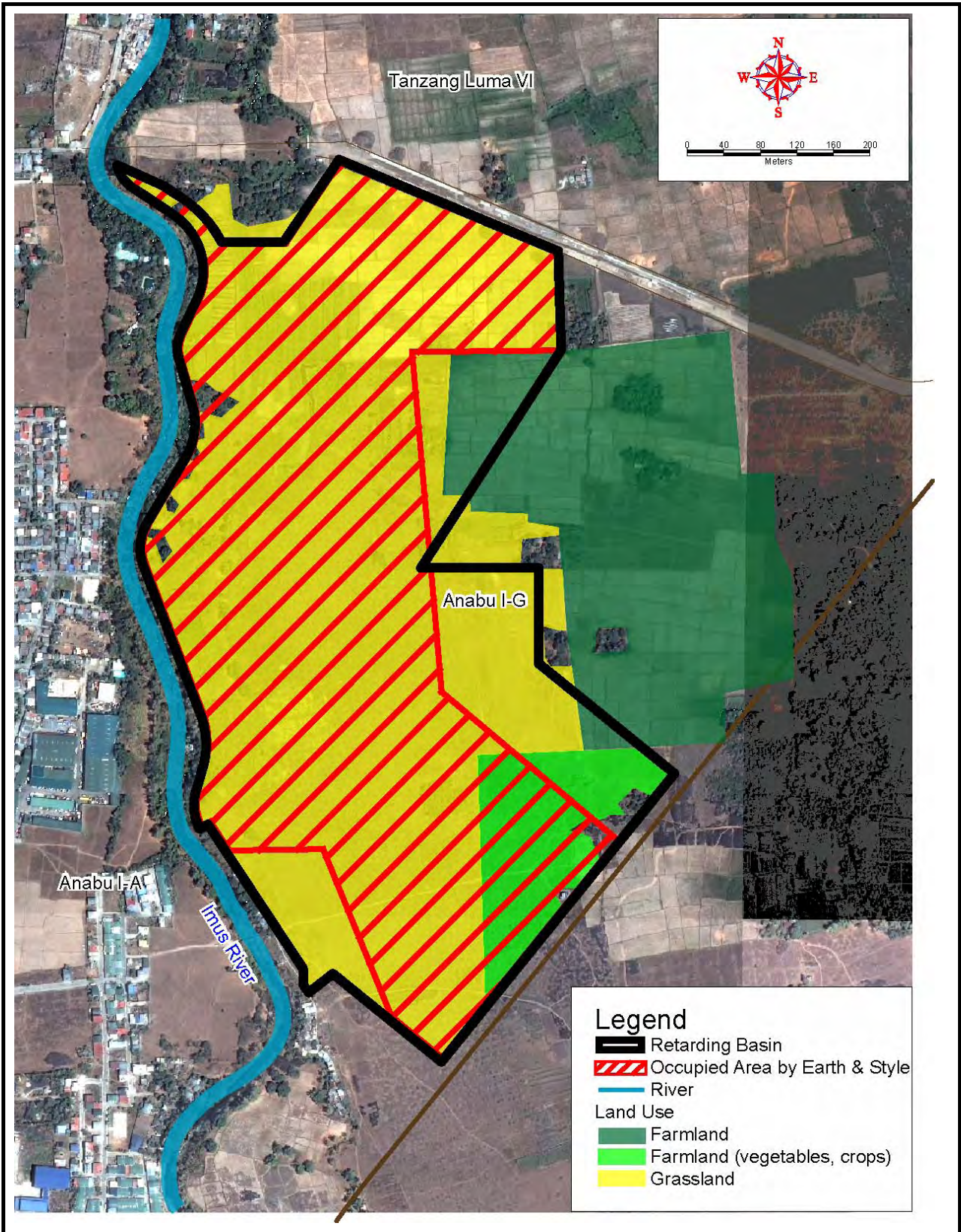


THE STUDY ON
 COMPREHENSIVE FLOOD MITIGATION
 FOR CAVITE LOWLAND AREA

CTI Engineering International Co., Ltd.
 Nippon Koei Co., Ltd

図 2.30

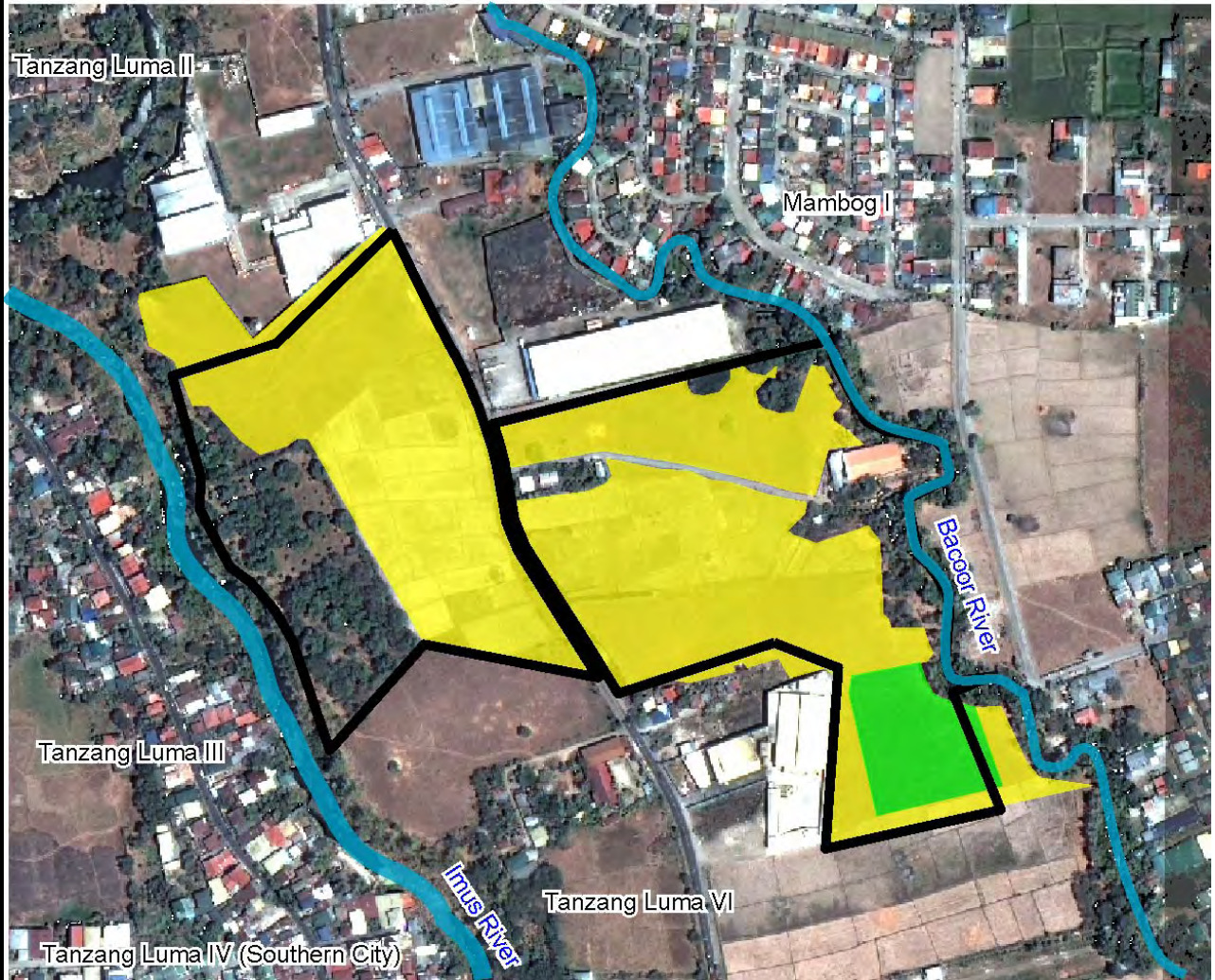
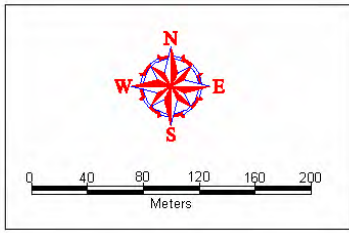
Julian 遊水地 (J1)周辺の現況土地利用状況と
 既存家屋位置



THE STUDY ON
 COMPREHENSIVE FLOOD MITIGATION
 FOR CAVITE LOWLAND AREA

CTI Engineering International Co., Ltd.
 Nippon Koei Co., Ltd

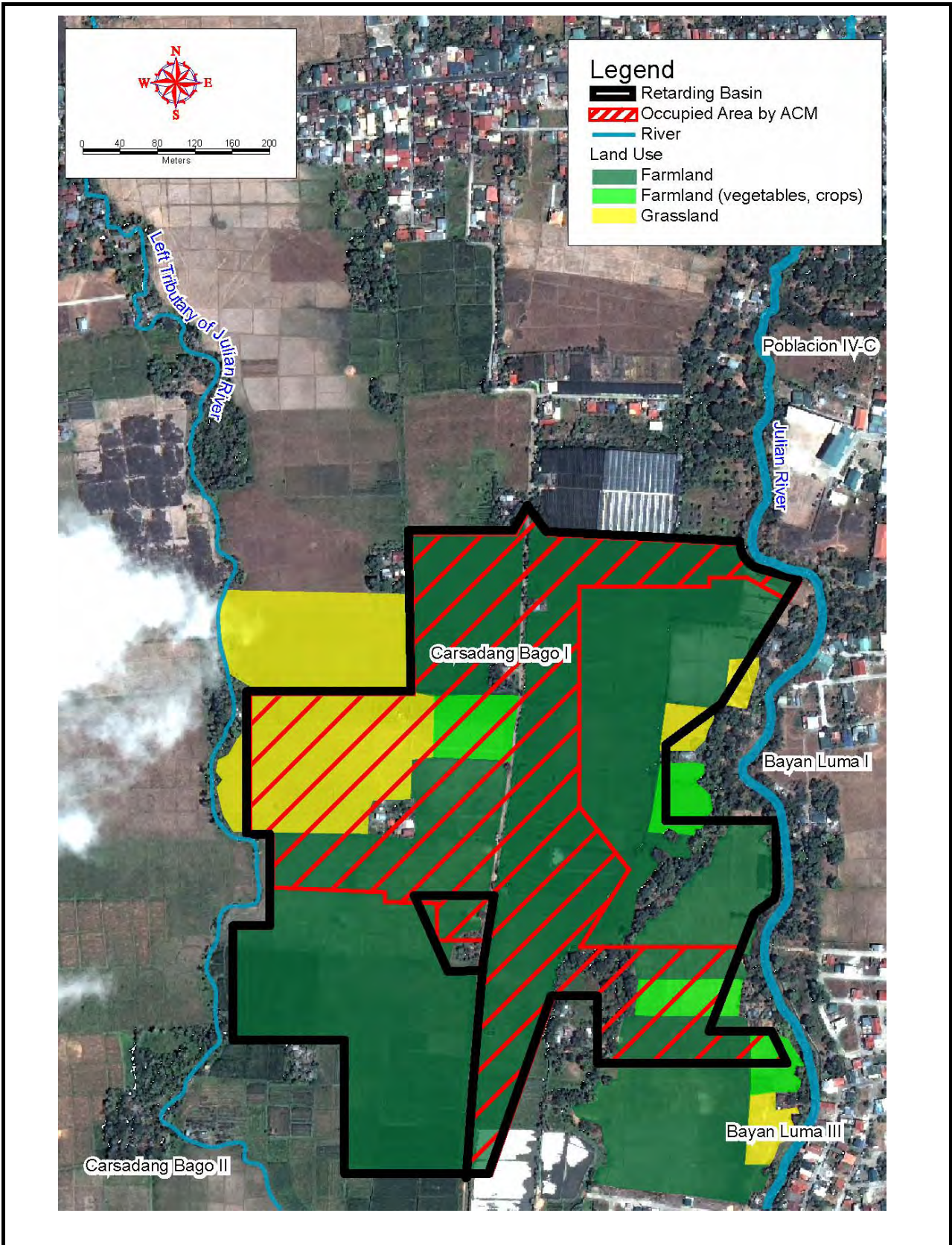
図 2.31
 Imus 遊水地 (II) の
 現況土地利用



THE STUDY ON
 COMPREHENSIVE FLOOD MITIGATION
 FOR CAVITE LOWLAND AREA

CTI Engineering International Co., Ltd.
 Nippon Koei Co., Ltd

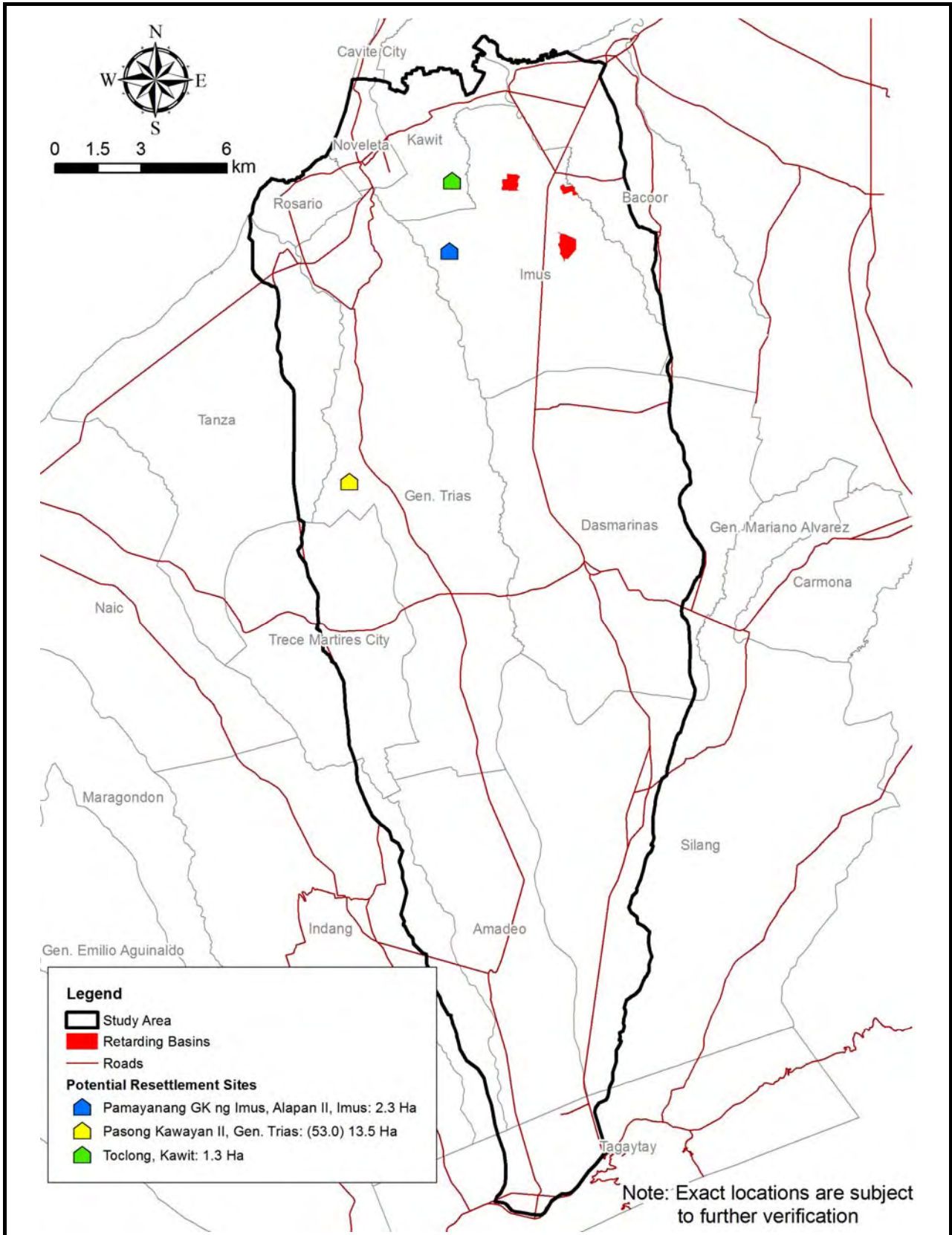
図 2.32
 Bacoor 遊水地(B4)の
 現況土地利用区分



THE STUDY ON
 COMPREHENSIVE FLOOD MITIGATION
 FOR CAVITE LOWLAND AREA

CTI Engineering International Co., Ltd.
 Nippon Koei Co., Ltd

図 2.33
 Julian 遊水地 (J1) の
 現況土地利用区分

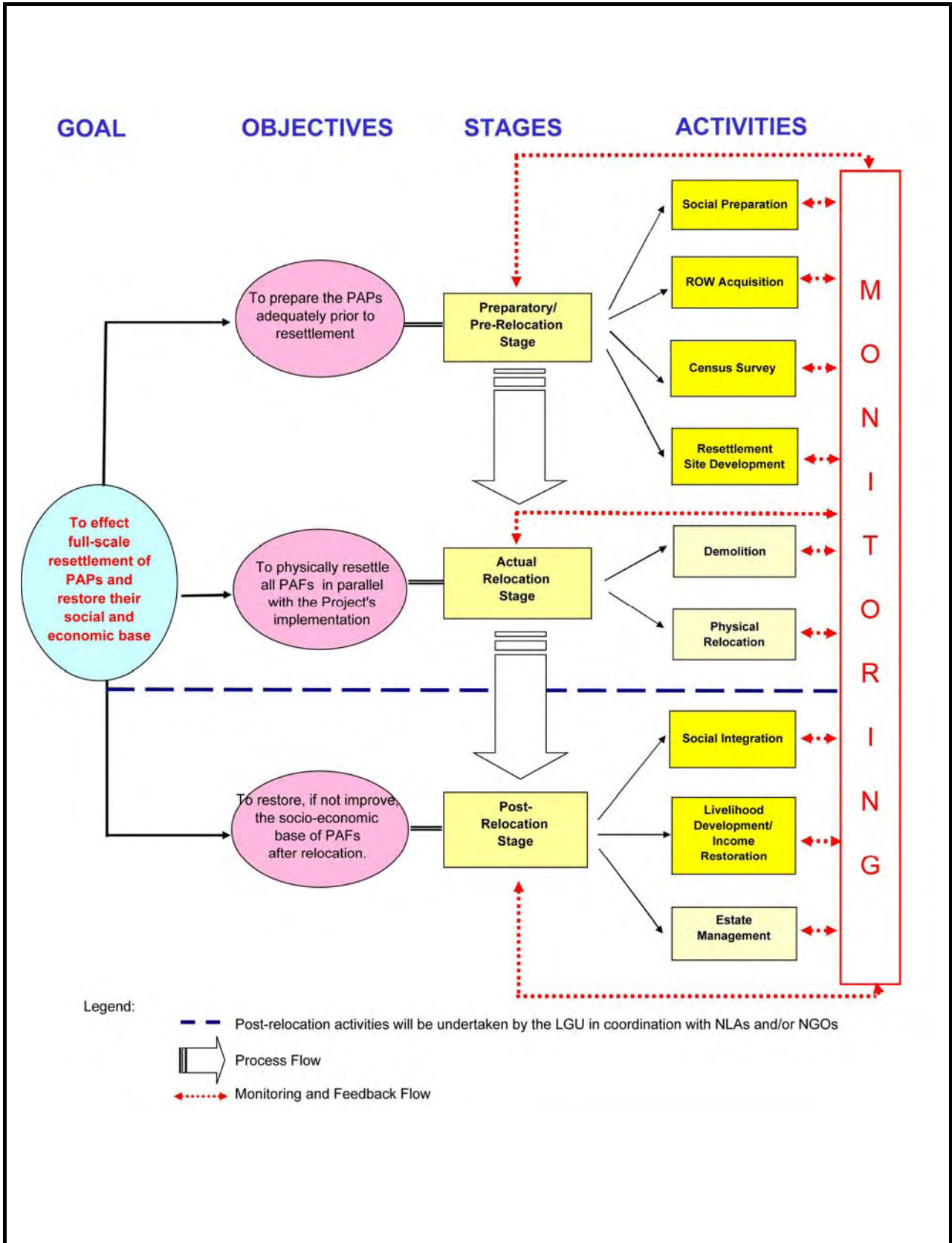


THE STUDY ON
 COMPREHENSIVE FLOOD MITIGATION
 FOR CAVITE LOWLAND AREA

CTI Engineering International Co., Ltd.
 Nippon Koei Co., Ltd

図 2.34

移転候補地



THE STUDY ON
 COMPREHENSIVE FLOOD MITIGATION
 FOR CAVITE LOWLAND AREA

CTI Engineering International Co., Ltd.
 Nippon Koei Co., Ltd

図 2.35

住民移転計画フレームワーク

GK Resettlement Site in Brgy. Alapan II, Imus



GK Resettlement Site in Brgy. Aguado, Trece Martires City

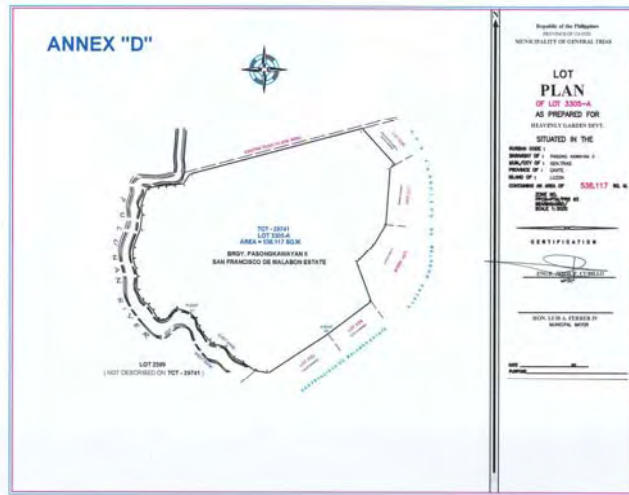


NHA-GK Resettlement Site in Southville Subd., Brgy. Aguado, Trece Martires City



THE STUDY ON
 COMPREHENSIVE FLOOD MITIGATION
 FOR CAVITE LOWLAND AREA
 CTI Engineering International Co., Ltd.
 Nippon Koei Co., Ltd

☒ 2.36
 Gawad Kalinga 移転地



THE STUDY ON
 COMPREHENSIVE FLOOD MITIGATION
 FOR CAVITE LOWLAND AREA

CTI Engineering International Co., Ltd.
 Nippon Koei Co., Ltd

図 2.37

団地開発計画 (Pasong Kawayan II)

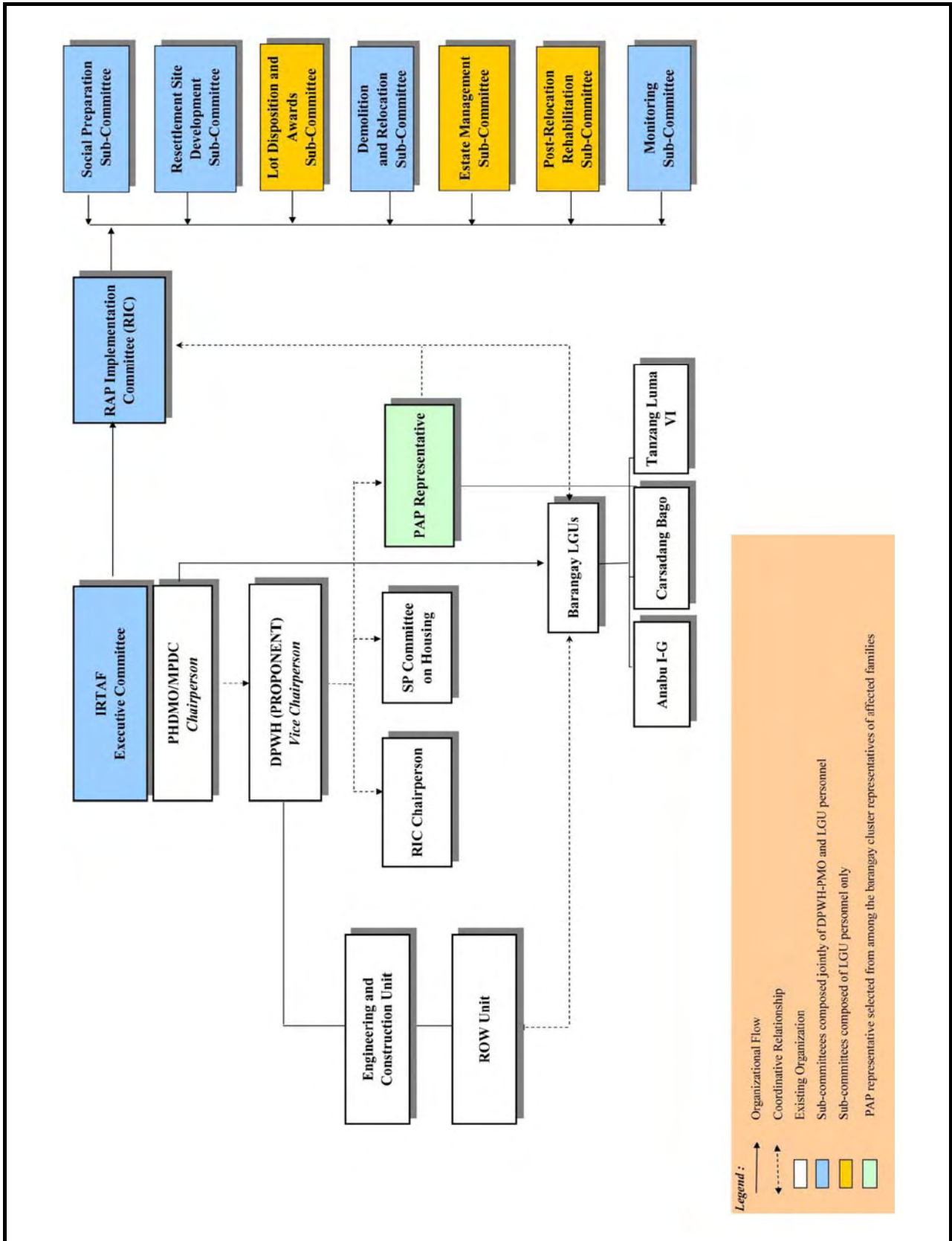


THE STUDY ON
COMPREHENSIVE FLOOD MITIGATION
FOR CAVITE LOWLAND AREA

CTI Engineering International Co., Ltd.
Nippon Koei Co., Ltd

図 2.38

職能生計支援キャラバン (PCLEDO)



THE STUDY ON
 COMPREHENSIVE FLOOD MITIGATION
 FOR CAVITE LOWLAND AREA

CTI Engineering International Co., Ltd.
 Nippon Koei Co., Ltd

図 2.39
 関係機関移転タスクフォース (IRTAF) の組織図