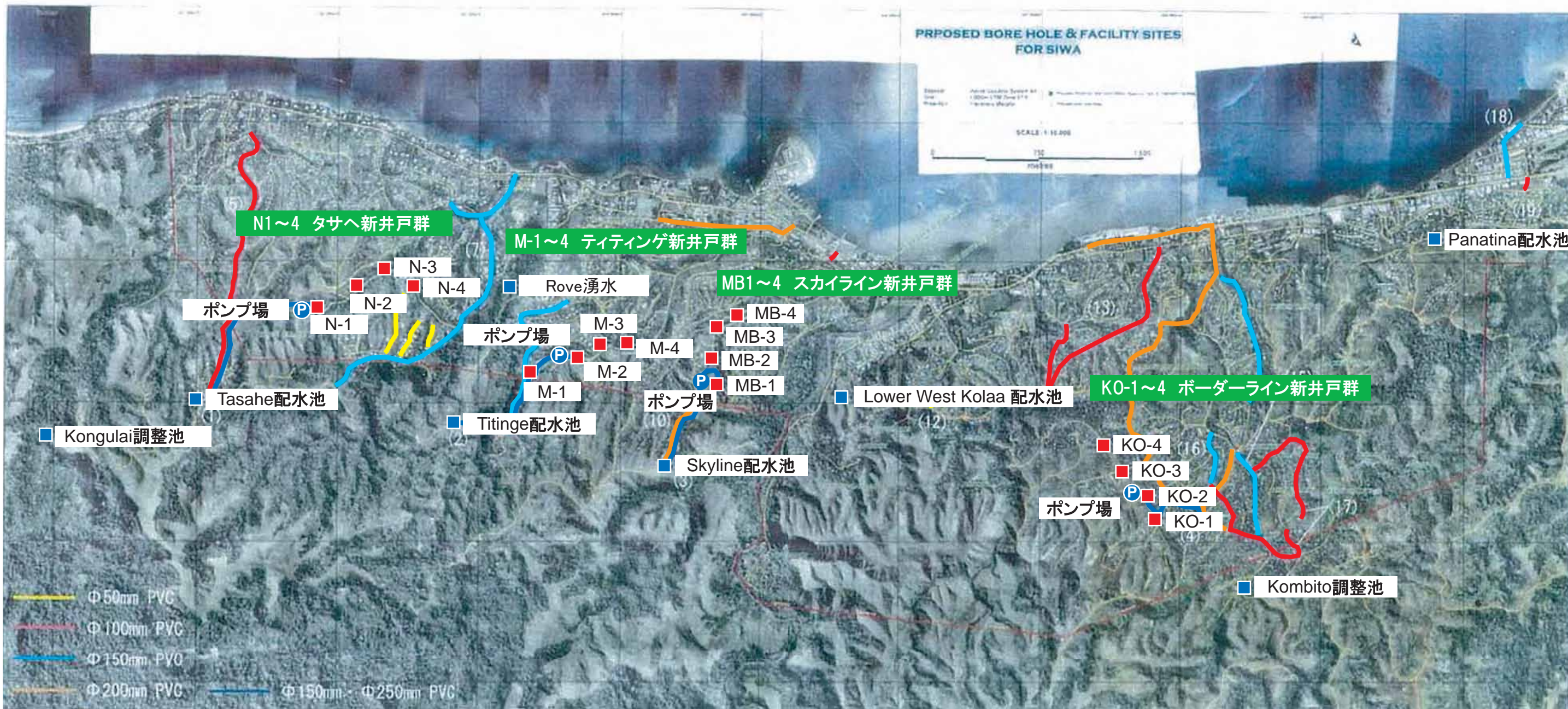


3-2-4 基本設計図

本プロジェクトの基本設計図は、以下のとおりであり、次頁以降に示す。

基本設計図面リスト

図面番号	図面タイトル
SWS-01	ホニアラ市要請施設配置図 (1/2)
SWS-02	ホニアラ市要請施設配置図 (2/2)
SWS-03	ホニアラ市フローシート (エリア 1)
SWS-04	ホニアラ市フローシート (エリア 2)
SWS-05	ホニアラ市フローシート (エリア 3)
SWS-06	ホニアラ市フローシート (エリア 7)
SWS-07	ホニアラ市フローシート (エリア 8)
SWS-08	コングライ高濁度対応型調整池配置図
SWS-09	コングライ高濁度対応型調整池平面図・断面図
SWS-10	コンビト高濁度対応型調整池配置図
SWS-11	コンビト高濁度対応型調整池平面図・断面図
SWS-12	ロベ湧水取水施設改善図
SWS-13	井戸構造図
SWS-14	送水ポンプ場平面・断面図 (標準図)
SWS-15	タサへ配水池平面・断面図
SWS-16	ティティンゲ配水池平面・断面図
SWS-17	スカイライン配水池平面・断面図
SWS-18	ロウア・ウエスト・コラ配水池平面・断面図
SWS-19	パナチナ配水池平面・断面図
SWS-20	アウキ市要請施設配置図 (1 枚)
SWS-21	アウキ市フローシート
SWS-22	単線結線図 (エリア 1)
SWS-23	単線結線図 (エリア 2)
SWS-24	単線結線図 (エリア 3) (1/2)
SWS-25	単線結線図 (エリア 3) (2/2)
SWS-26	単線結線図 (エリア 7)
SWS-27	単線結線図 (エリア 8)
SWS-28	単線結線図 (アウキ)

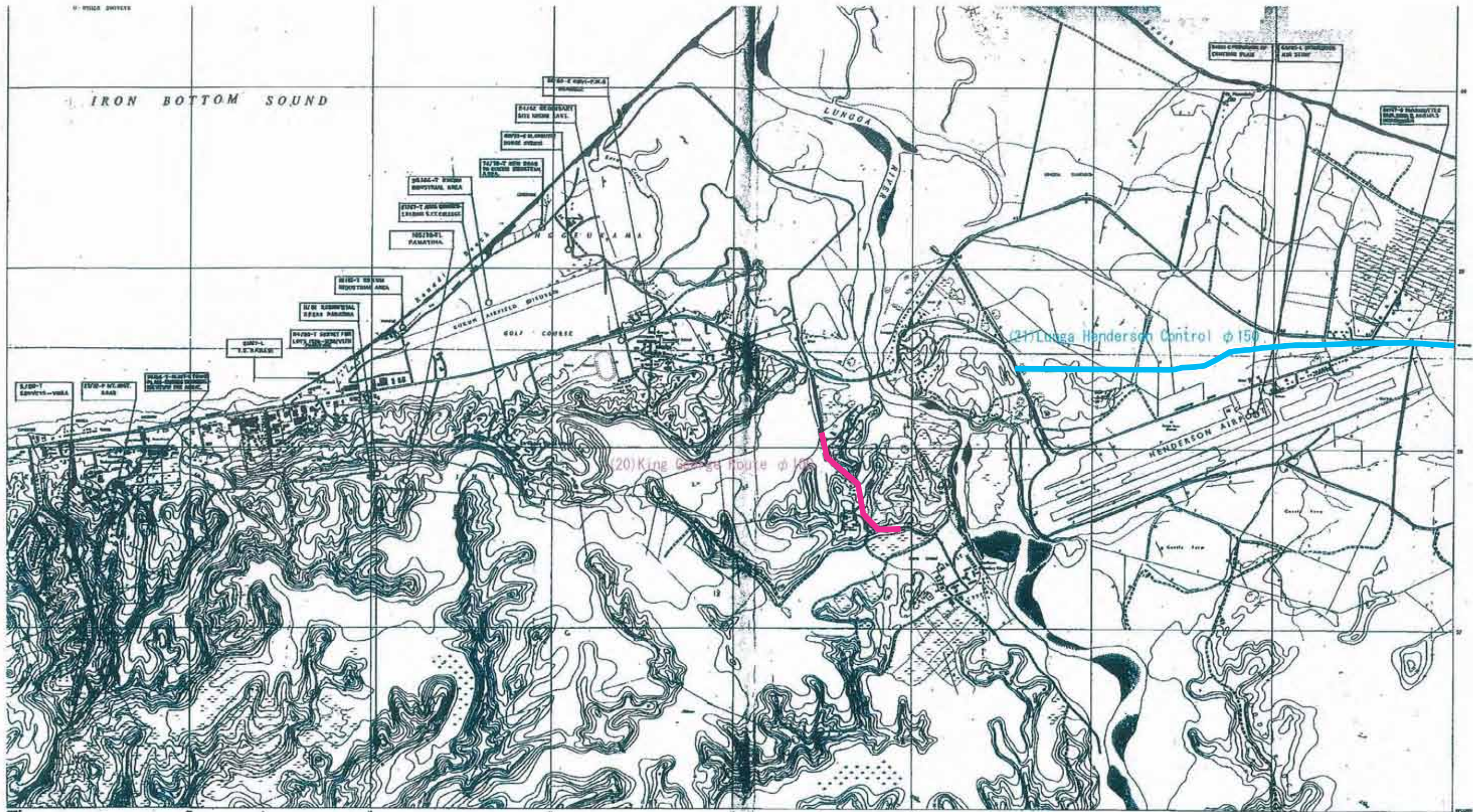


凡例:

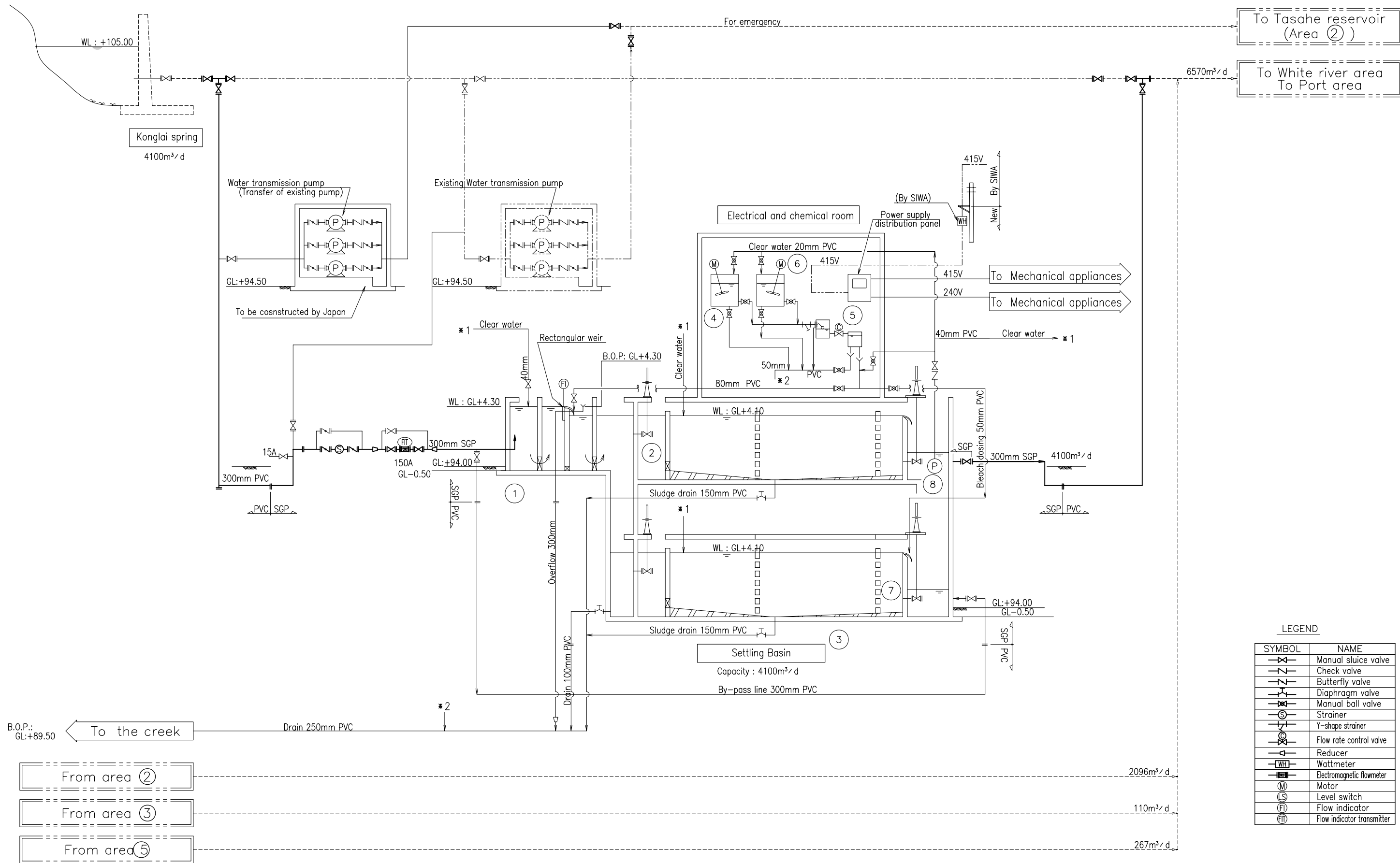
- 調整池/配水池
- Ⓟ ポンプ場
- 井戸

配水本管

- 50mm
- 100mm
- 150mm
- 200mm
- 150mm・200mm



配水本管
 100mm
 150mm



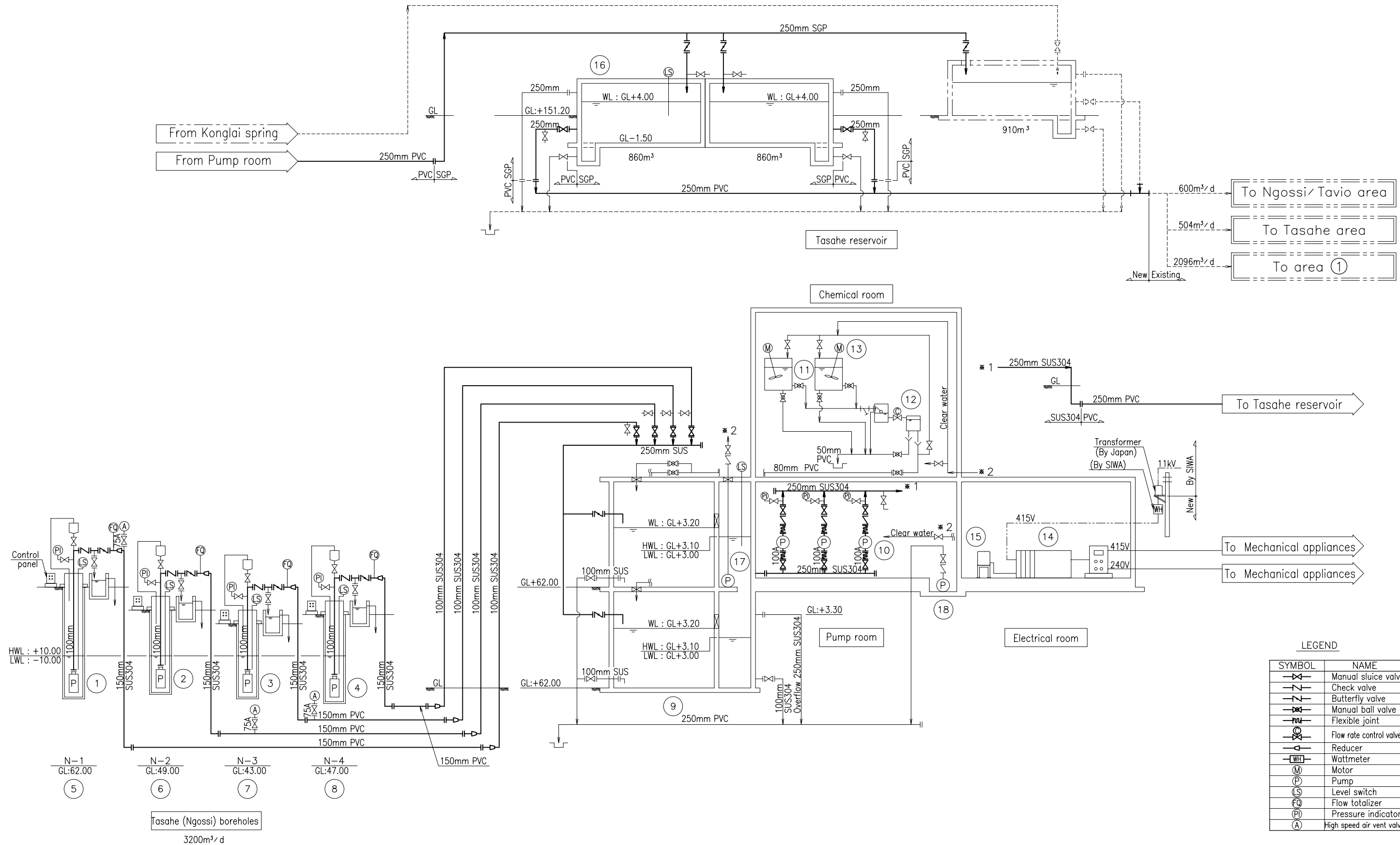
LEGEND

SYMBOL	NAME
	Manual sluice valve
	Check valve
	Butterfly valve
	Diaphragm valve
	Manual ball valve
	Strainer
	Y-shape strainer
	Flow rate control valve
	Reducer
	Wattmeter
	Electromagnetic flowmeter
	Motor
	Level switch
	Flow indicator
	Flow indicator transmitter

EQUIPMENT No.	(1)	(2)	(3)	(4)	(5)	(6)	(7)	(8)
NAME	Receiving well	Inlet valve	Settling Basin	Bleach solution tank	Bleach solution dosing device	Agitator for bleach solution	Outlet valve (For Emergency)	Sampling pump
TYPE / MATERIALS	Rectangular/RC	Manual sluice valve/FC+Resin	Plain sedimentation/RC	Circle/PE	/ PVC	Portable type/SUS304+PEL	Manual sluice valve/FC+Resin	Submersible type/SUS

SUS: SUS means stainless steel.

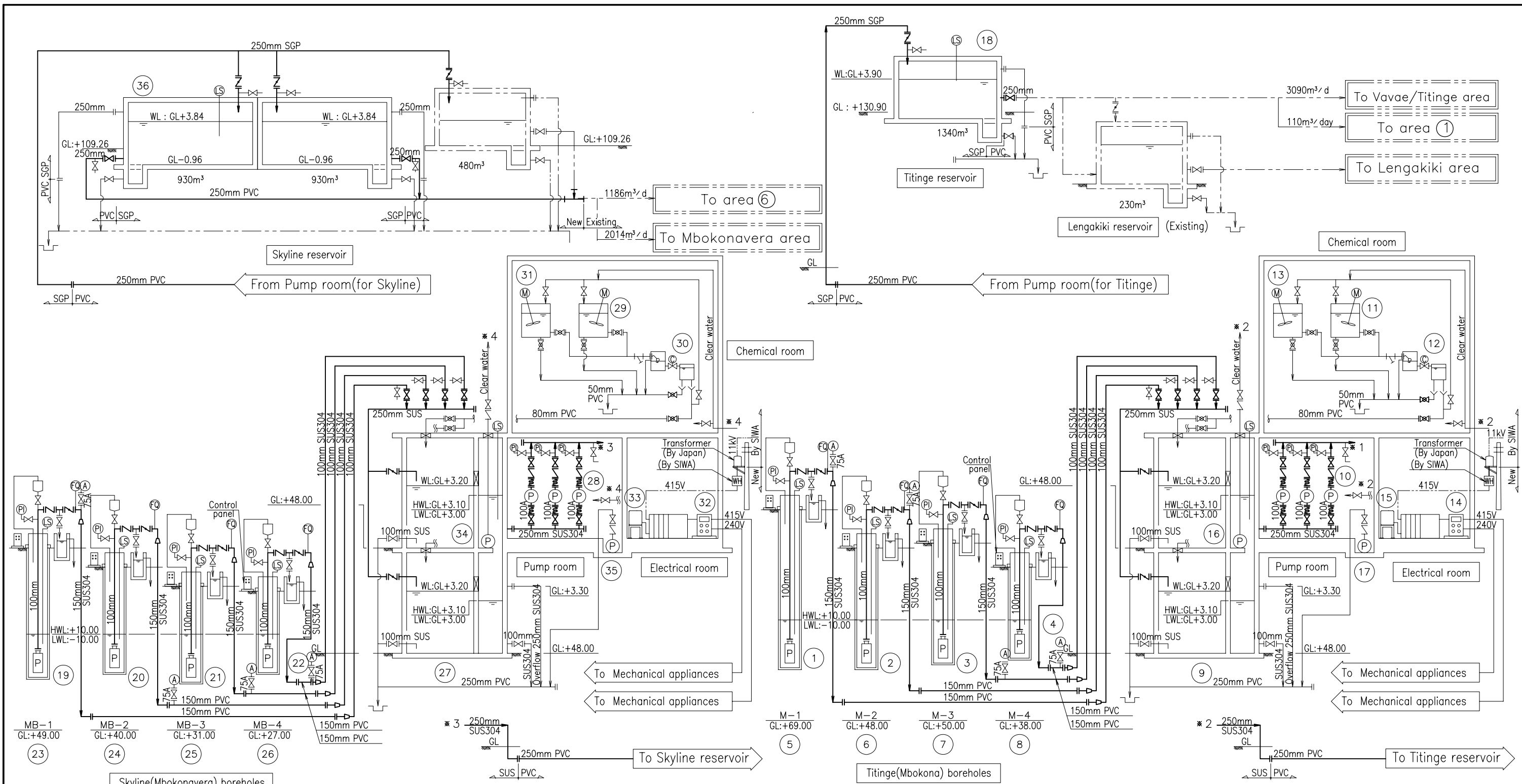
SWS-03 ホニアラ市フローシート (エリア 1)



EQUIPMENT No.	(1)	(2)	(3)	(4)	(5)	(6)	(7)	(8)	(9)	(10)
NAME	N-1 bore pump	N-2 bore pump	N-3 bore pump	N-4 bore pump	N-1 bore /SUS304	N-2 bore /SUS304	N-3 bore /SUS304	N-4 bore /SUS304	Collector tank Rectangular/RC	Transmission pump Vertical multi stage volute pump
TYPE / MATERIALS	Submergible type/SUS	Submergible type/SUS	Submergible type/SUS	Submergible type/SUS	N-1 bore /SUS304	N-2 bore /SUS304	N-3 bore /SUS304	N-4 bore /SUS304		
EQUIPMENT No.	(1)	(2)	(3)	(4)	(5)	(6)	(7)	(8)	(9)	
NAME	Bleach solution tank	Bleach solution dosing device	Agitator for bleach solution	Generator (for emergency)	Fuel tank	Tasaha reservoir	Sampling pump	Drain pump		
TYPE / MATERIALS	Circle/PE	/ PVC	Portable type/SUS304+PEL	Diesel Engine	SS400	Rectangular/RC	Submergible type/SUS	Submergible type/SUS		

SUS: SUS means stainless steel.

SWS-04 ホニアラ市フローシート (エリア2)



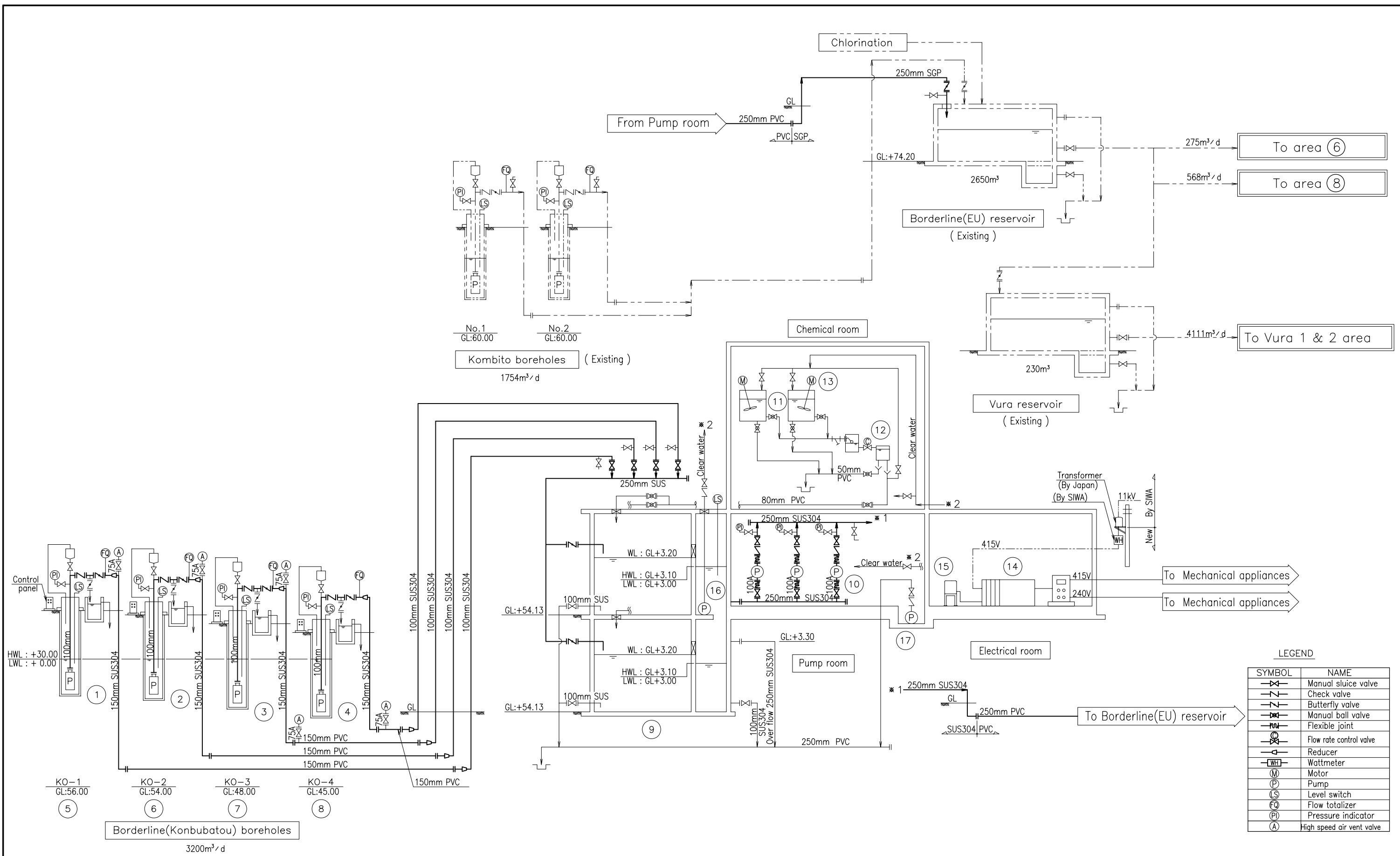
LEGEND

SYMBOL	NAME	SYMBOL	NAME
	Manual sluice valve		Wattmeter
	Check valve		Motor
	Butterfly valve		Pump
	Manual ball valve		Level switch
	Flexible joint		Flow totalizer
	Reducer		Pressure indicator
	Flow rate control valve		High speed air vent valve

EQUIPMENT No.	(1)	(2)	(3)	(4)	(5)	(6)	(7)	(8)	(9)	(10)
NAME	M-1 bore pump	M-2 bore pump	M-3 bore pump	M-4 bore pump	M-1 bore /SUS304	M-2 bore /SUS304	M-3 bore /SUS304	M-4 bore /SUS304	Collector tank(for Titinge) Rectangular/RC	Transmission pump Vertical multi stage volute pump
TYPE / MATERIALS	Submergible type/SUS	Submergible type/SUS	Submergible type/SUS	Submergible type/SUS						
EQUIPMENT No.	(11)	(12)	(13)	(14)	(15)	(16)	(17)	(18)	(19)	(20)
NAME	Bleach solution tank Circle/PE	Bleach solution dosing device /PVC	Agitator for bleach solution Portable type/SUS304+PEL	Generator(for emergency) Diesel Engine	Fuel tank(For Titinge) SS400	Sampling pump Submergible type/SUS	Drain pump Submergible type/SUS	Titinge reservoir Rectangular/RC	MB-1 bore pump Submergible type/SUS	MB-2 bore pump Submergible type/SUS
TYPE / MATERIALS										
EQUIPMENT No.	(21)	(22)	(23)	(24)	(25)	(26)	(27)	(28)	(29)	(30)
NAME	MB-3 bore pump Submergible type/SUS	MB-4 bore pump Submergible type/SUS	MB-1 bore /SUS304	MB-2 bore /SUS304	MB-3 bore /SUS304	MB-4 bore /SUS304	Collector tank(for Skyline) Rectangular/RC	Transmission pump Vertical multi stage volute pump	Bleach solution tank Circle/PE	Bleach solution dosing device /PVC
TYPE / MATERIALS										
EQUIPMENT No.	(31)	(32)	(33)	(34)	(35)	(36)				
NAME	Agitator for bleach solution Portable type/SUS304+PEL	Generator(for emergency) Diesel Engine	Fuel tank(For Skyline) SS400	Sampling pump Submergible type/SUS	Drain pump Submergible type/SUS	Skyline reservoir Rectangular/RC				
TYPE / MATERIALS										

SUS: SUS means stainless steel.

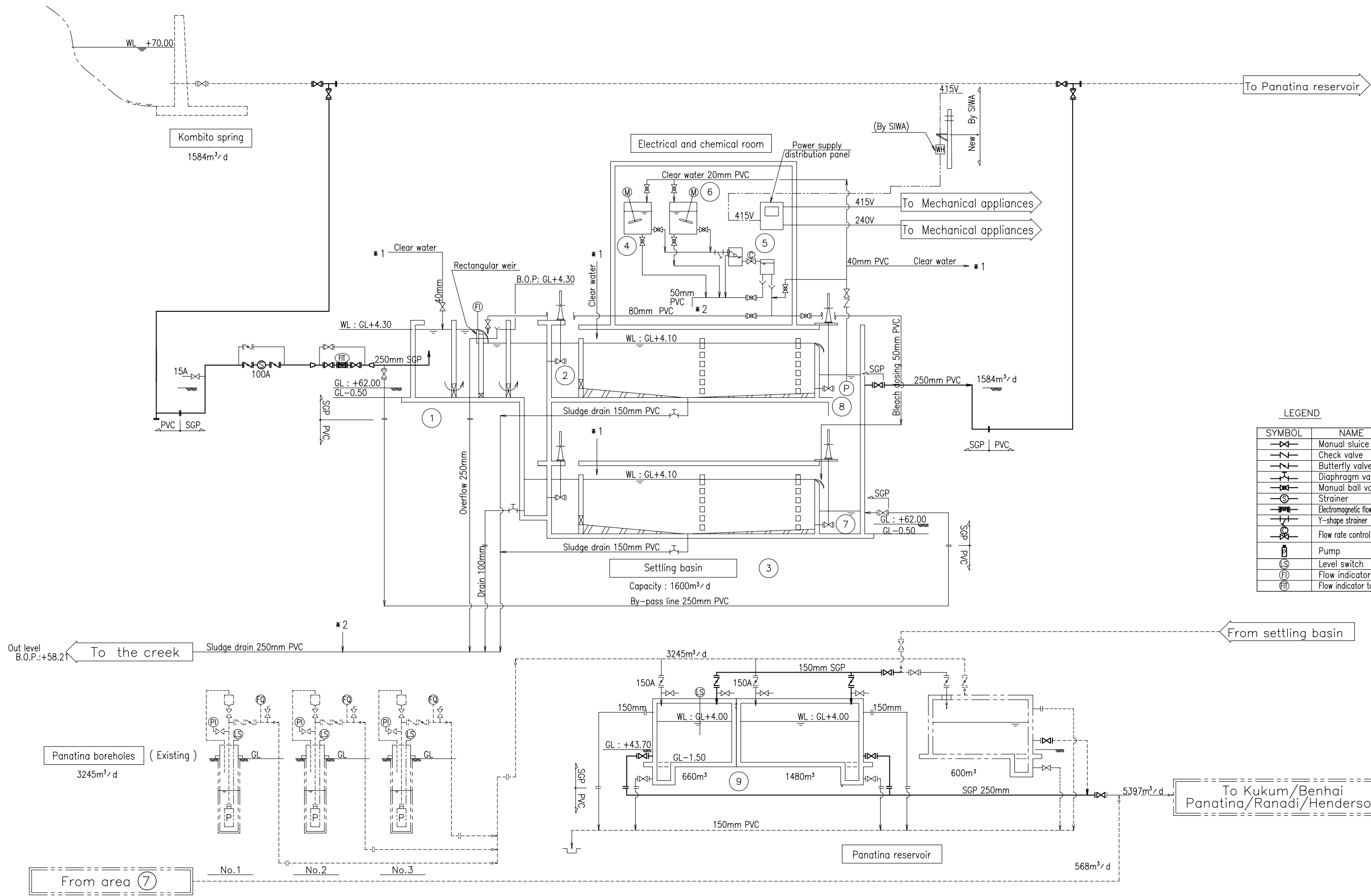
SWS-05 ホニアラ市フローシート (エリア3)



EQUIPMENT No.	(1)	(2)	(3)	(4)	(5)	(6)	(7)	(8)	(9)	(10)
NAME	KO-1 bore pump	KO-2 bore pump	KO-3 bore pump	KO-4 bore pump	KO-1 bore /SUS304	KO-2 bore /SUS304	KO-3 bore /SUS304	KO-4 bore /SUS304	Collector tank Rectangular/RC	Transmission pump Vertical multi stage volute pump
TYPE / MATERIALS	Submersible type/SUS304	Submersible type/SUS304	Submersible type/SUS304	Submersible type/SUS304						
EQUIPMENT No.	(1)	(2)	(3)	(4)	(5)	(6)	(7)			
NAME	Bleach solution tank	Bleach solution dosing device	Agitator for bleach solution	Generator(for emergency)	Fuel tank	Sampling pump	Drain pump			
TYPE / MATERIALS	Circle/PE	/PVC	Portable type/SUS304+PEL	Diesel Engine	SS400	Submersible type/SUS	Submersible type/SUS			

SWS-06 ホニアラ市フローシート (エリア7)

SUS: SUS means stainless steel.



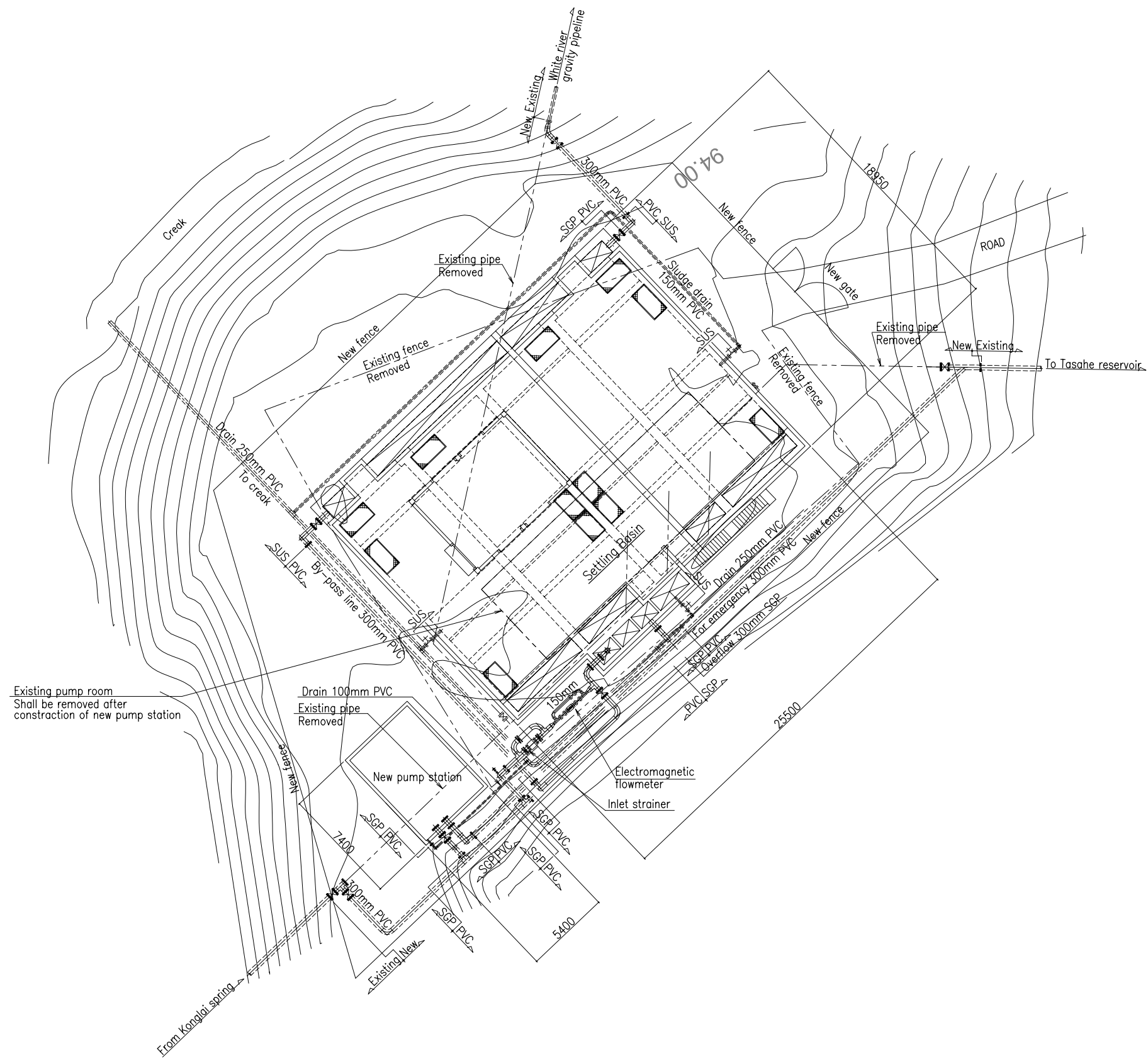
LEGEND

SYMBOL	NAME
	Manual sluice valve
	Check valve
	Butterfly valve
	Diaphragm valve
	Manual ball valve
	Strainer
	Electromagnetic flowmeter
	Y-shape strainer
	Flow rate control valve
	Pump
	Level switch
	Flow indicator
	Flow indicator totalizer

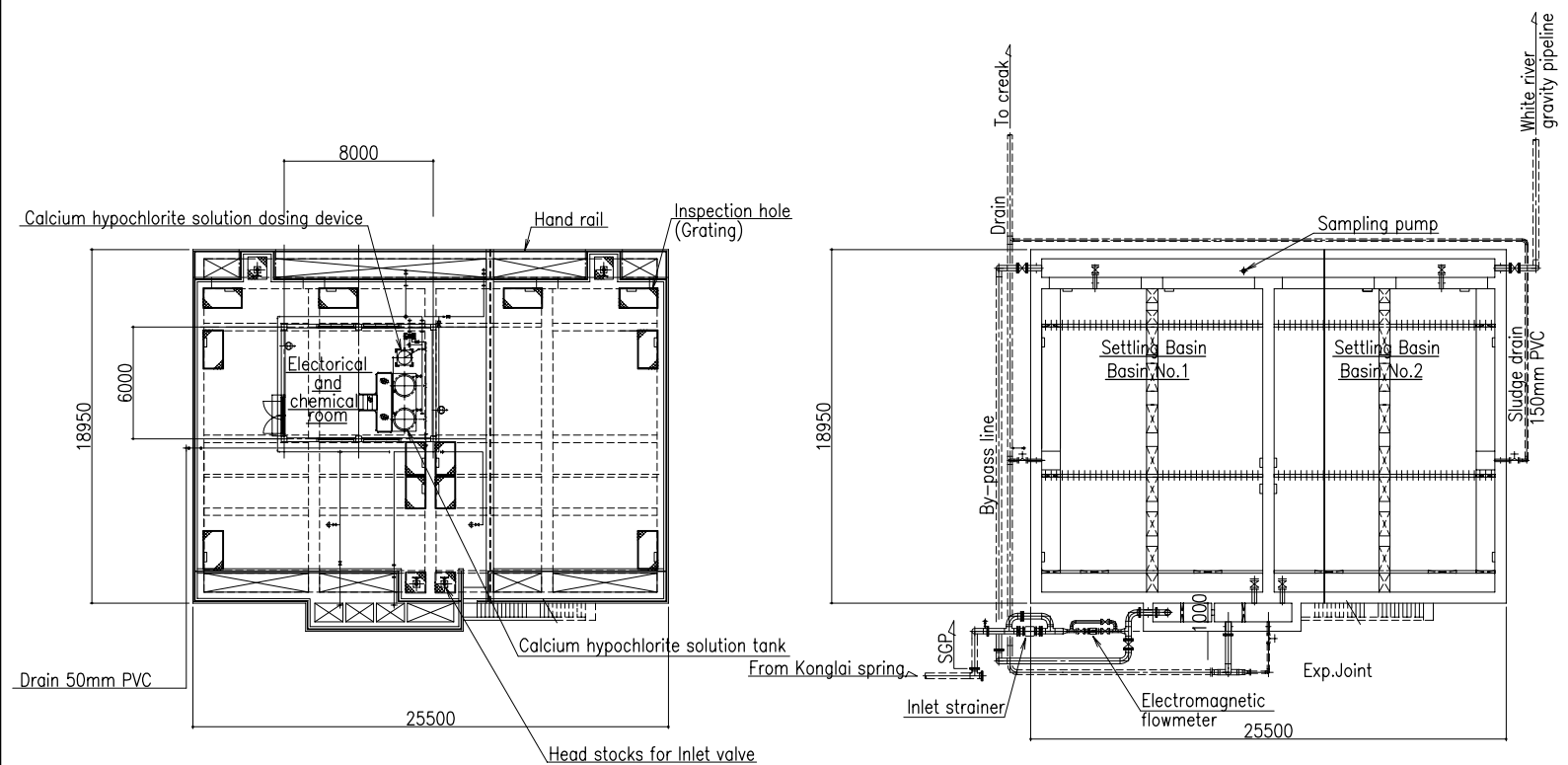
EQUIPMENT No.	(1)	(2)	(3)	(4)	(5)	(6)	(7)	(8)	(9)
NAME	Receiving well	Inlet valve	Settling basin	Bleach solution tank	Bleach solution dosing device	Agitator for bleach solution	Outlet valve (For Emergency)	Sampling pump	Panatina reservoir
TYPE / MATERIALS	Rectangular/RC	Manual sluice valve/FC+Resin	Plain sedimentation/RC	Circle/PE	/ PVC	Portable type/SUS304+PEL	Manual sluice valve/FC+Resin	Submersible type/SUS	Rectangular/RC

SUS: SUS means stainless steel.

SWS-07 ホニアラ市フローシート (エリア8)

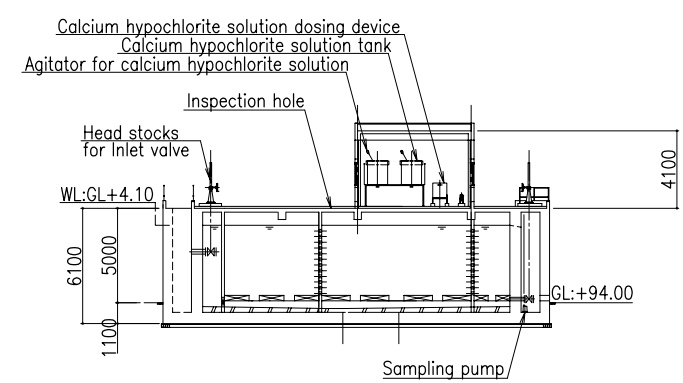


S=1:300
SWS-08 コングライ高濁度対応型調整池配置図

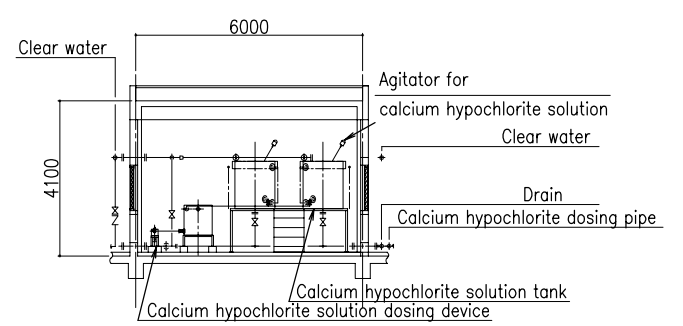


A-A SECTION
(1 : 400)

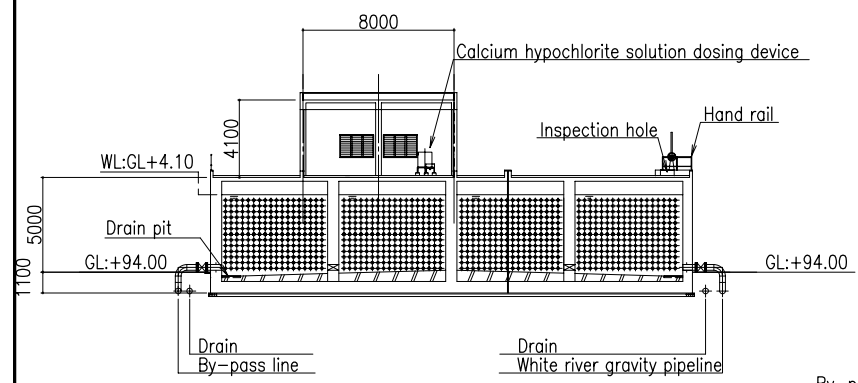
B-B SECTION
(1 : 400)



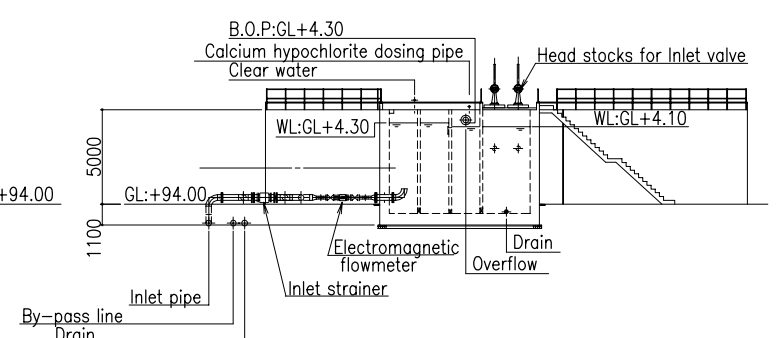
C-C SECTION
(1 : 400)



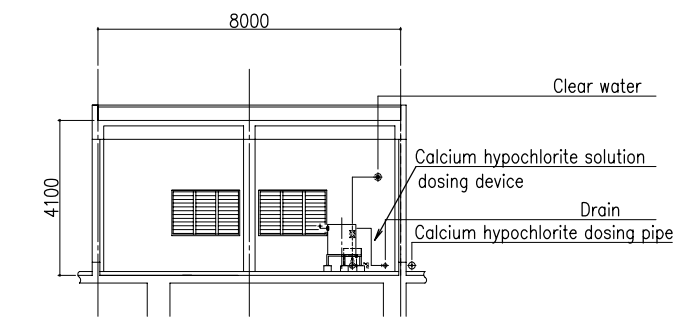
a-a SECTION
(1 : 200)



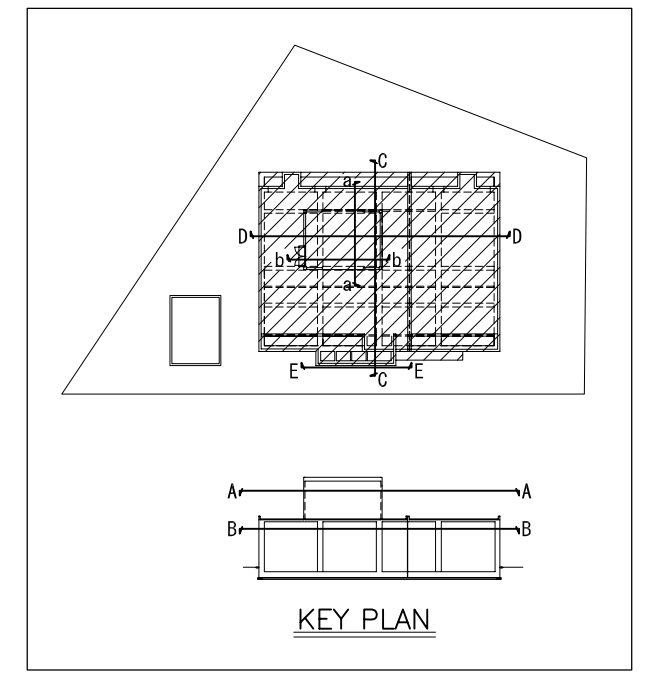
D-D SECTION
(1 : 400)



E-E SECTION
(1 : 400)

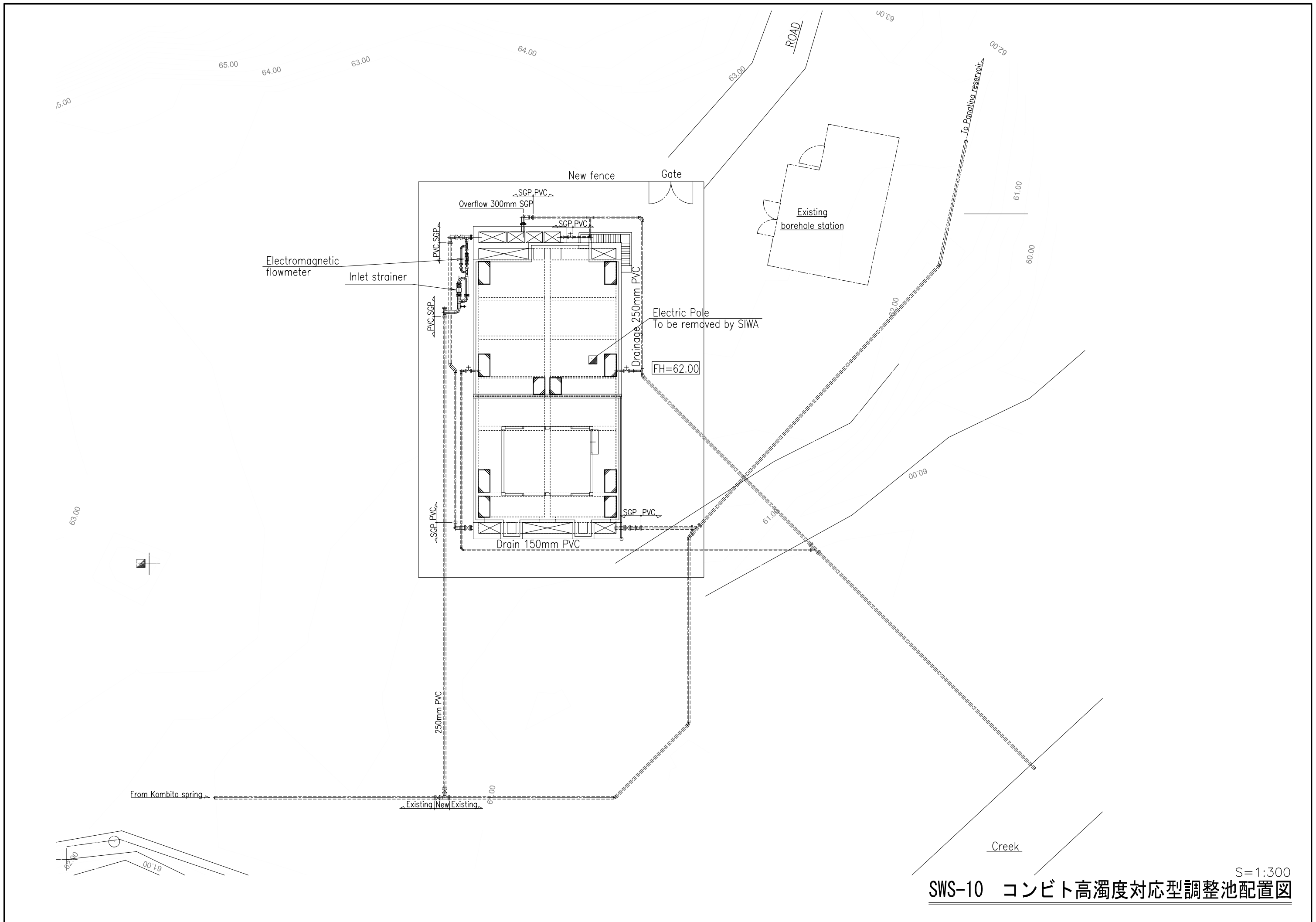


b-b SECTION
(1 : 200)

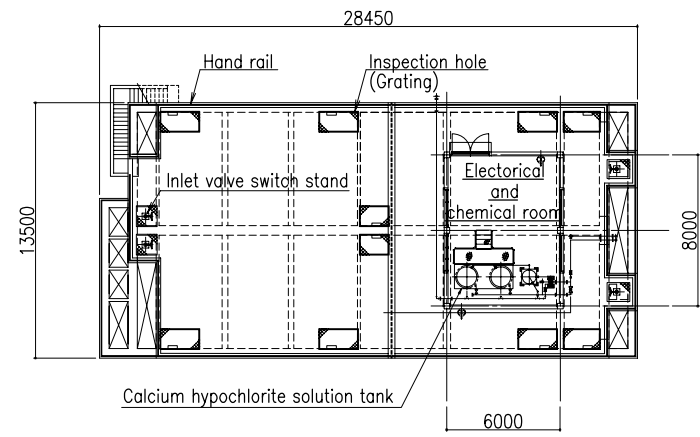
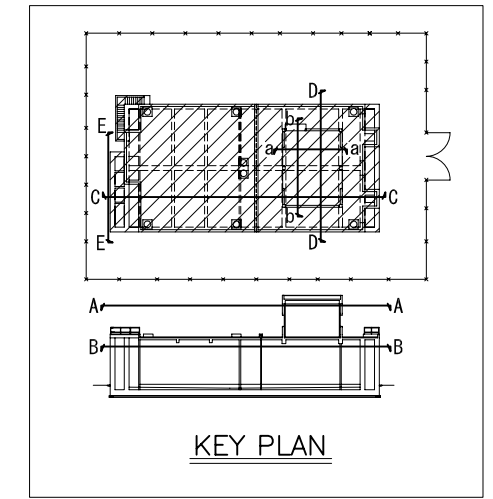


KEY PLAN

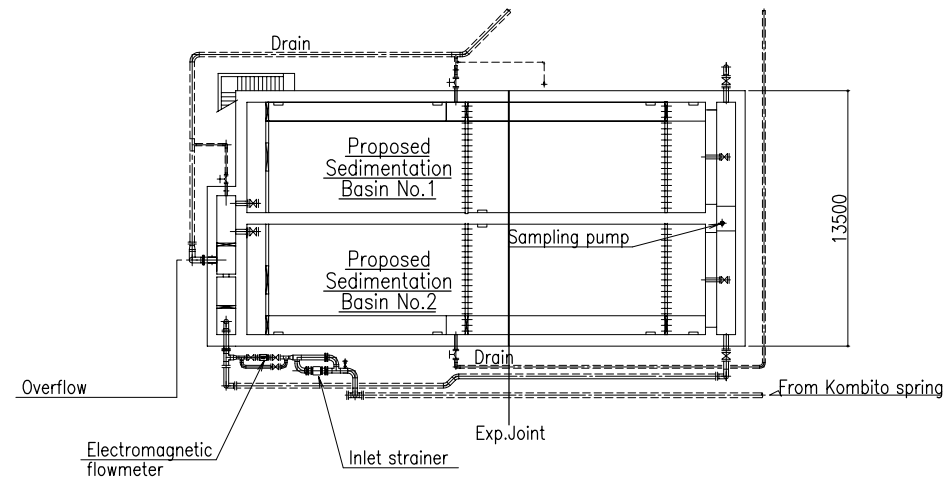
Electrical and chemical room



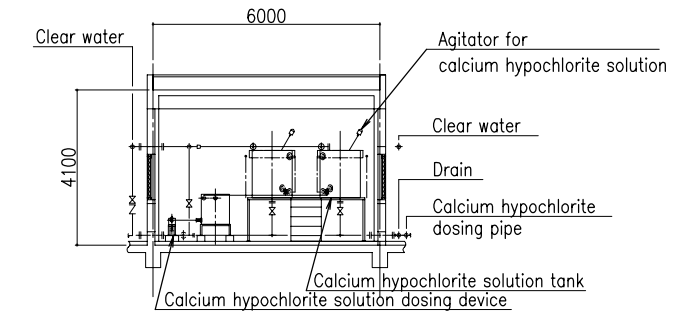
S=1:300
SWS-10 コンビト高濁度対応型調整池配置図



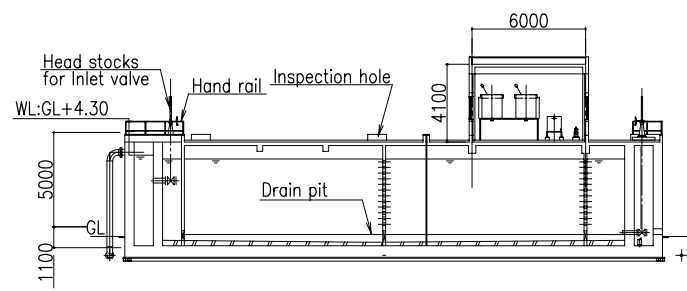
A-A SECTION
(1:400)



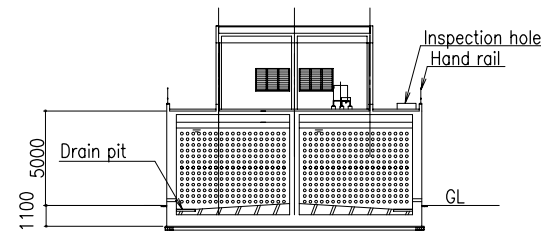
B-B SECTION
(1:400)



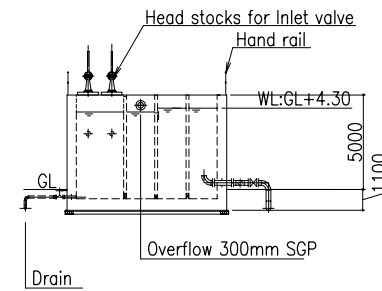
a-a SECTION
(1:200)



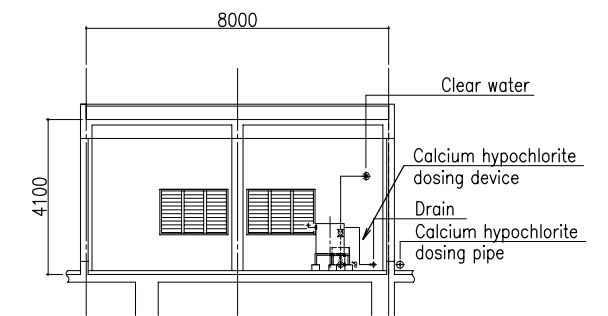
C-C SECTION
(1:400)



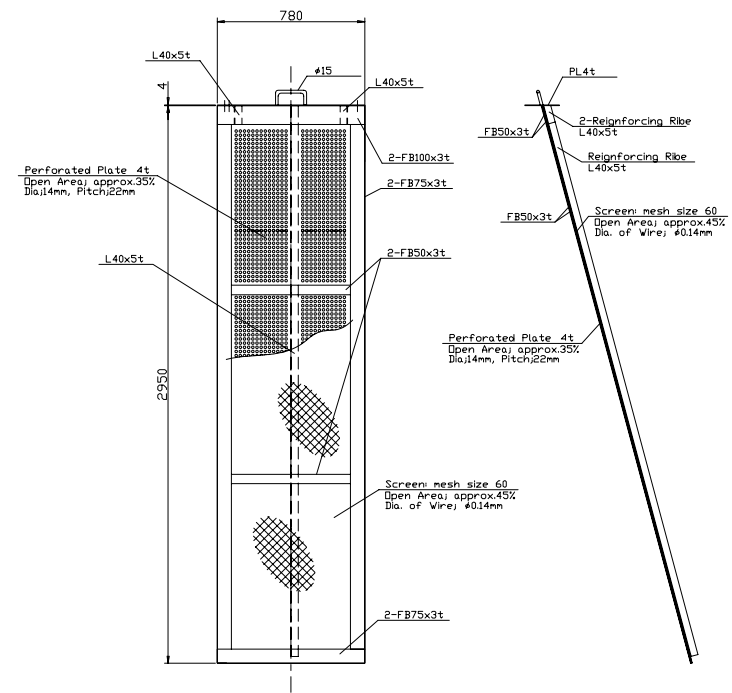
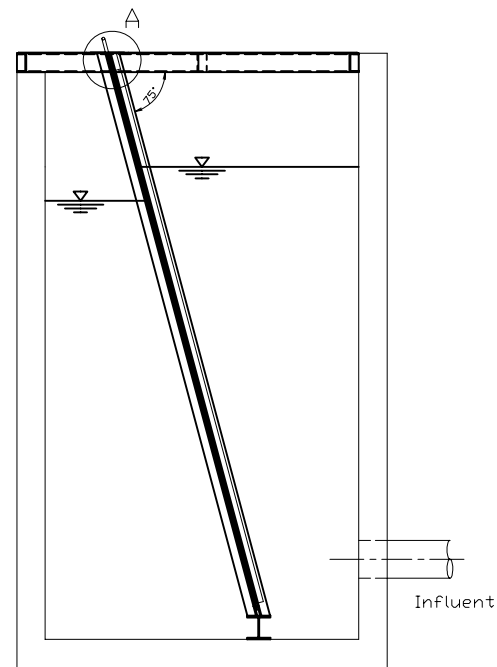
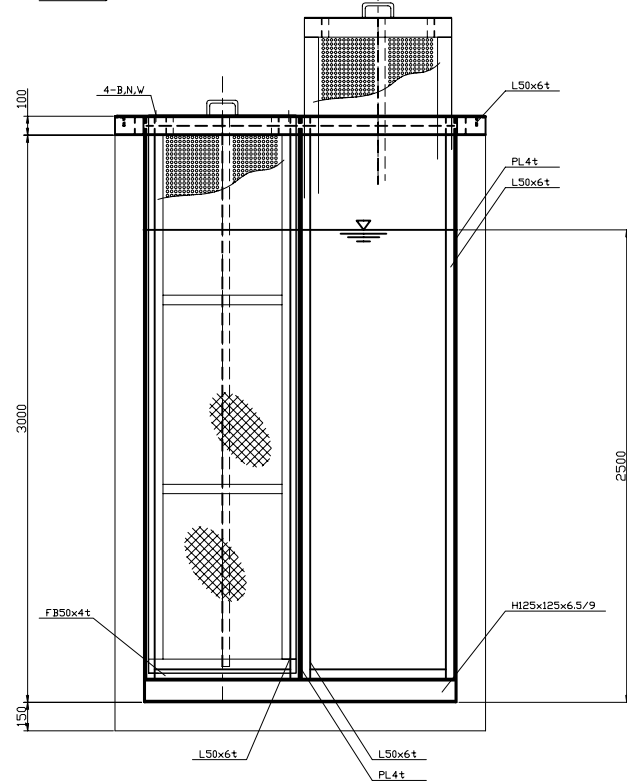
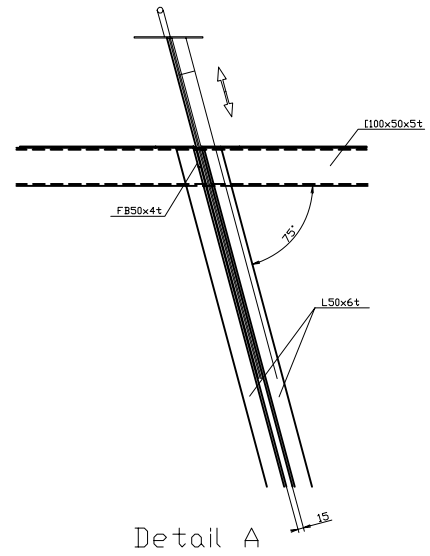
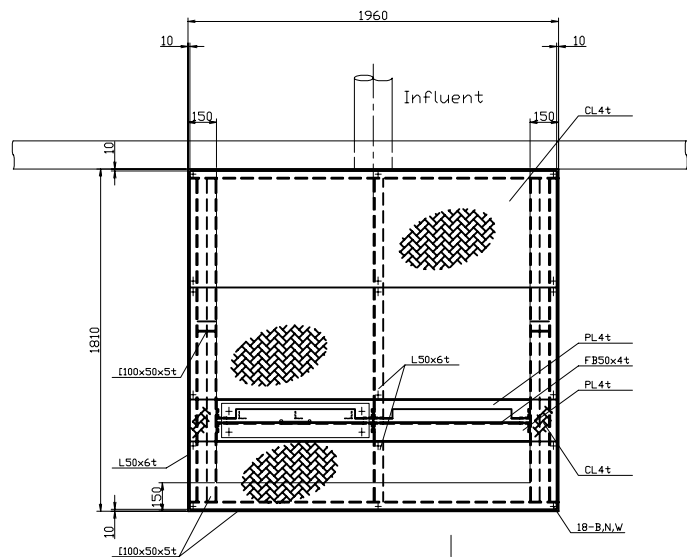
D-D SECTION
(1:400)



E-E SECTION
(1:400)



b-b SECTION
(1:200)



Frame
Material; SUS304

Screen
Material; SUS304

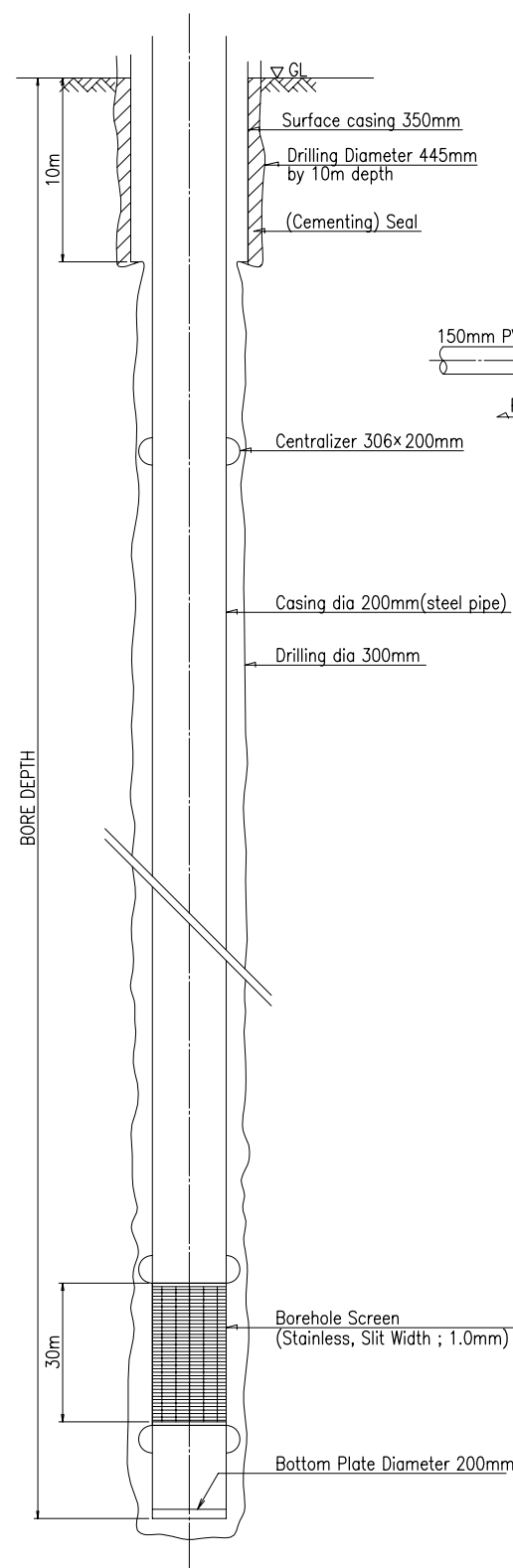
SWS-12 ロベ湧水取水施設改善図

SPECIFICATION OF BORE AND PUMP FOR HONIARA

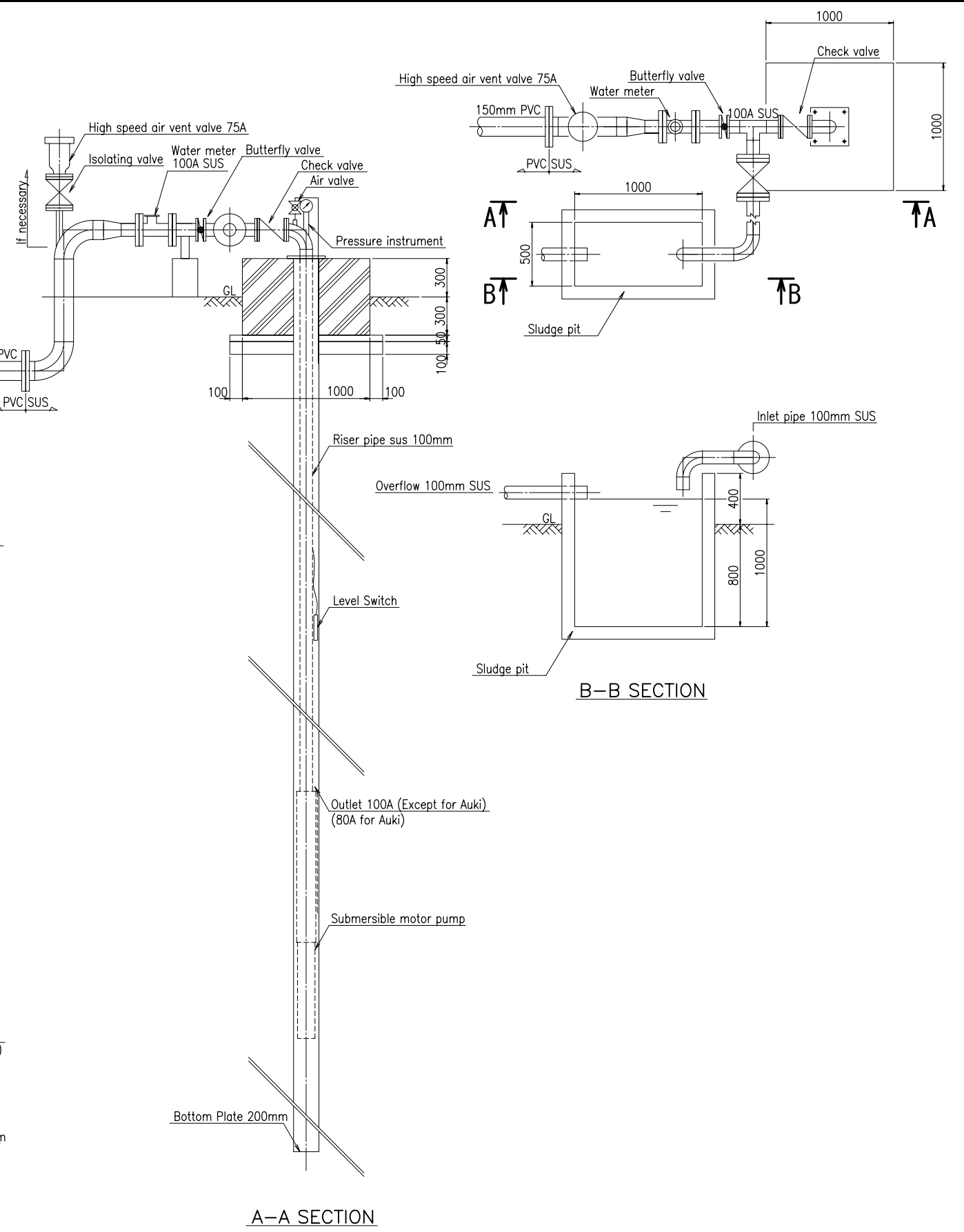
SITE NAME	BORE No.	GL (EL. m)	BORE DEPTH (GL.- m)	PUMP INSTLATION LEVEL (GL.- m)	WATER LOW LEVEL (EL. m)	PUMP CAPACITY	Requirement of high speed air vent valves	UNITS
TASAHE	N-1	62	130	80	-10	0.56m ³ /min×85mAq	○	1
	N-2	49	120	65	-10	0.56m ³ /min×85mAq	—	1
	N-3	43	120	60	-10	0.56m ³ /min×85mAq	—	1
	N-4	47	130	65	-10	0.56m ³ /min×85mAq	—	1
TITINGE	M-1	69	140	85	-10	0.56m ³ /min×85mAq	○	1
	M-2	48	130	65	-10	0.56m ³ /min×70mAq	○	1
	M-3	50	120	65	-10	0.56m ³ /min×70mAq	—	1
	M-4	38	110	55	-10	0.56m ³ /min×70mAq	—	1
SKYLINE	MB-1	49	130	65	-10	0.56m ³ /min×70mAq	○	1
	MB-2	40	120	55	-10	0.56m ³ /min×70mAq	—	1
	MB-3	31	120	50	-10	0.56m ³ /min×70mAq	—	1
	MB-4	27	110	45	-10	0.56m ³ /min×70mAq	—	1
BOARDERLINE	KO-1	56	100	65	0	0.56m ³ /min×65mAq	○	1
	KO-2	54	100	60	0	0.56m ³ /min×65mAq	○	1
	KO-3	48	100	55	0	0.56m ³ /min×65mAq	○	1
	KO-4	45	100	50	0	0.56m ³ /min×65mAq	—	1

SPECIFICATION OF BORE AND PUMP FOR AUKI

SITE NAME	BORE No.	GL (EL. m)	BORE DEPTH (GL.- m)	PUMP INSTLATION LEVEL (GL.- m)	WATER LOW LEVEL (EL. m)	PUMP CAPACITY	Requirement of high speed air vent valves	UNITS
AUKI	AK-1	29	100	45	-10	0.28m ³ /min×105mAq	—	1
	AK-2	37	100	50	-5	0.28m ³ /min×105mAq	—	1



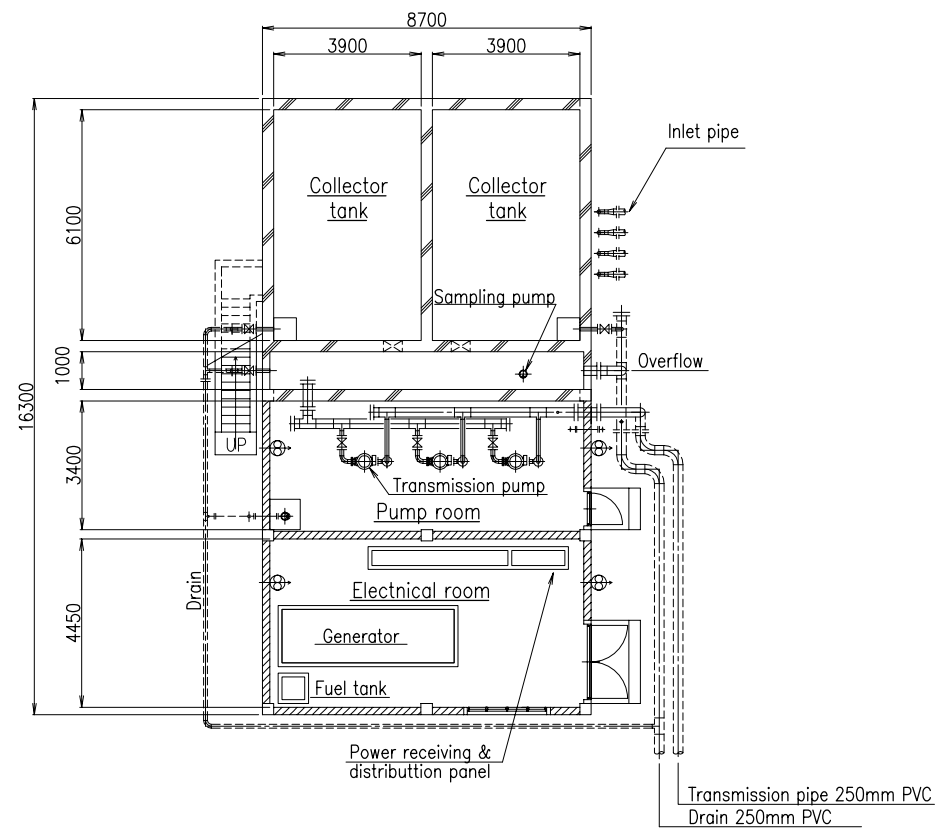
BOREHOLE STRUCTURE



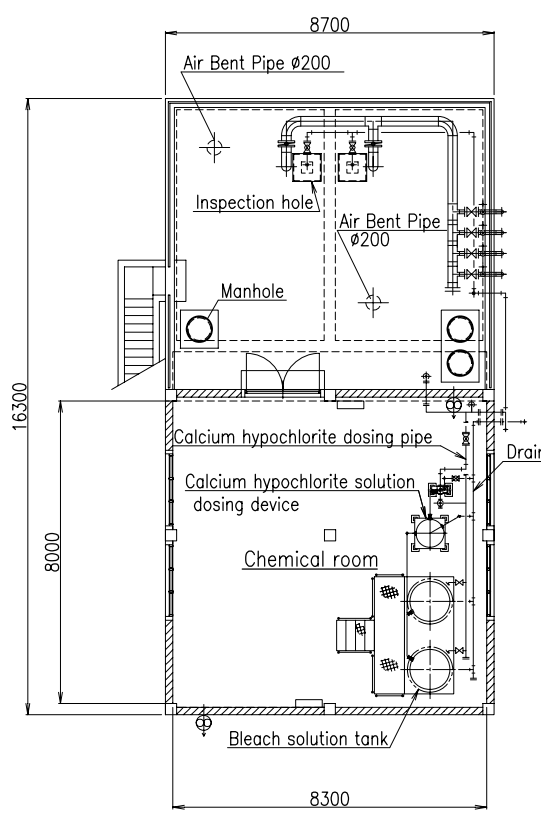
A-A SECTION

B-B SECTION

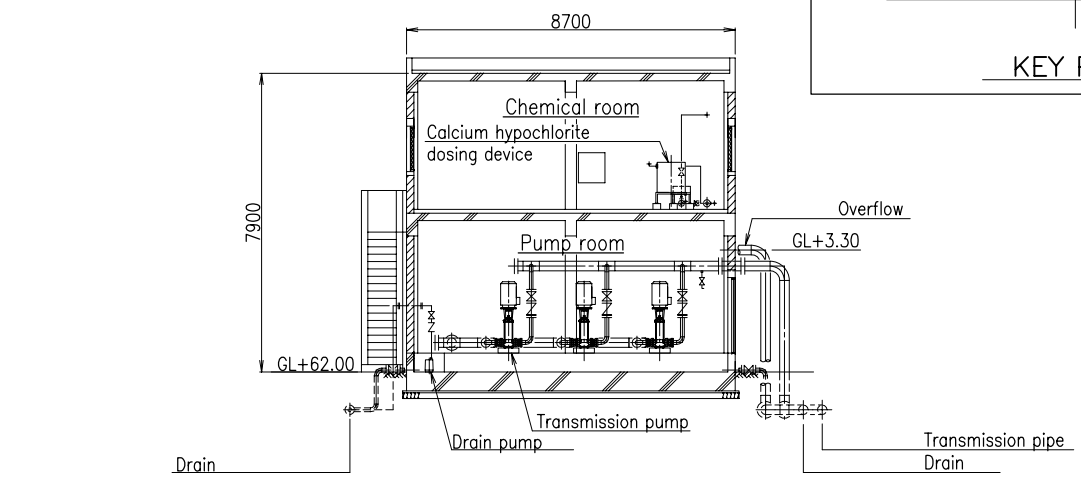
INSTALLATION OF SUBMERSIBLE MOTER PUMP



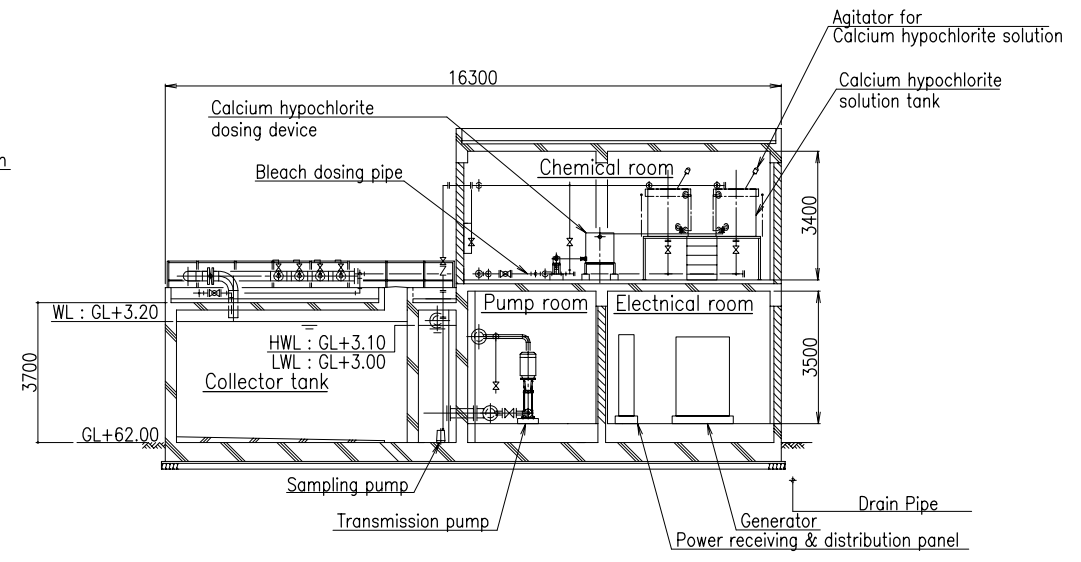
1F LAYOUT



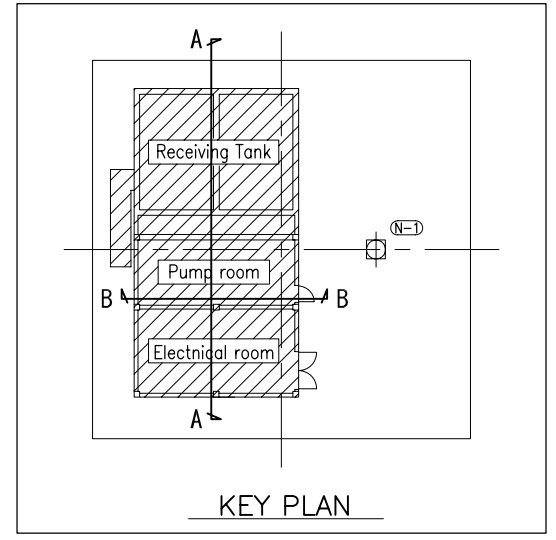
2F LAYOUT



B-B SECTION

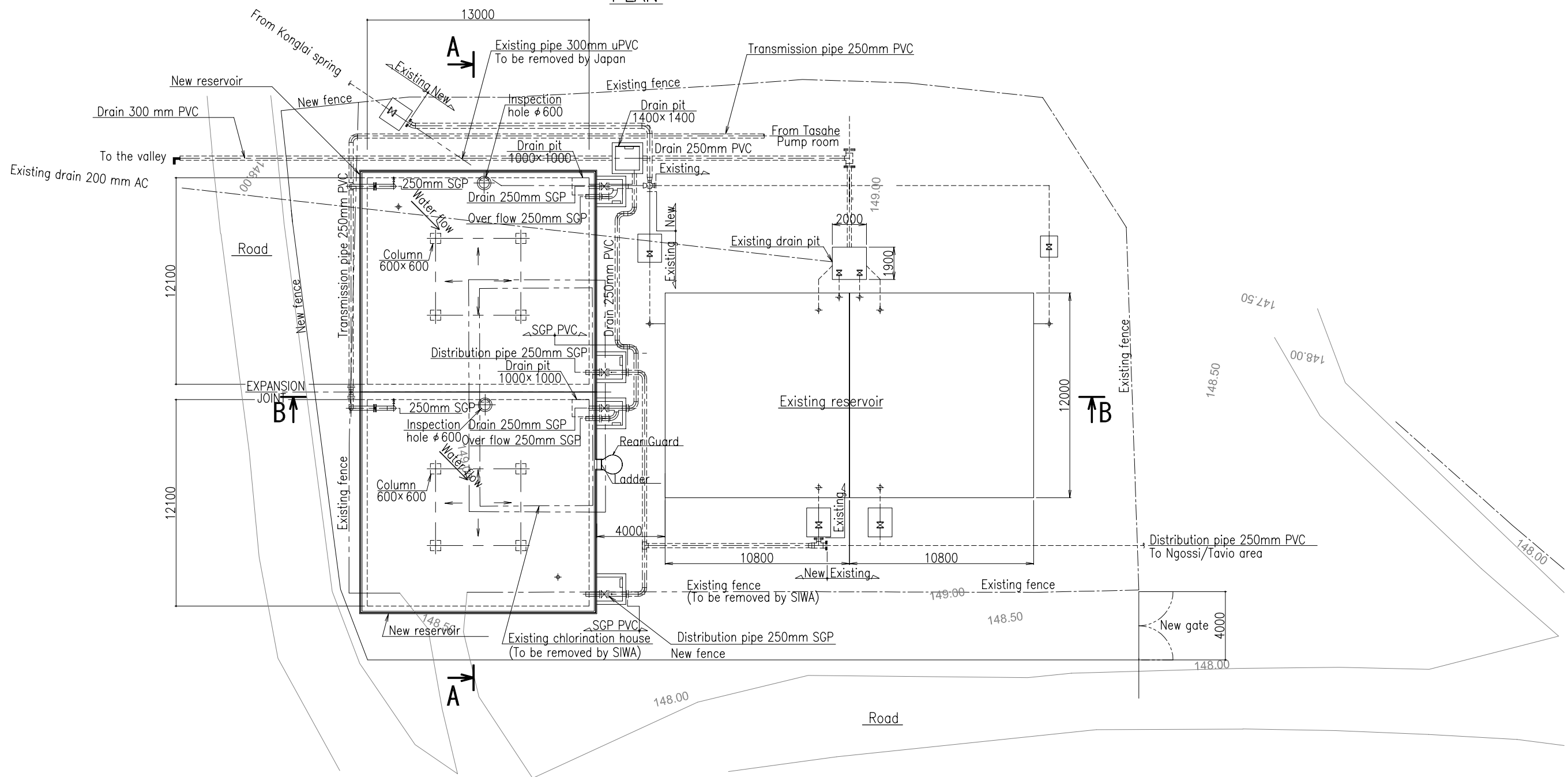


A-A SECTION

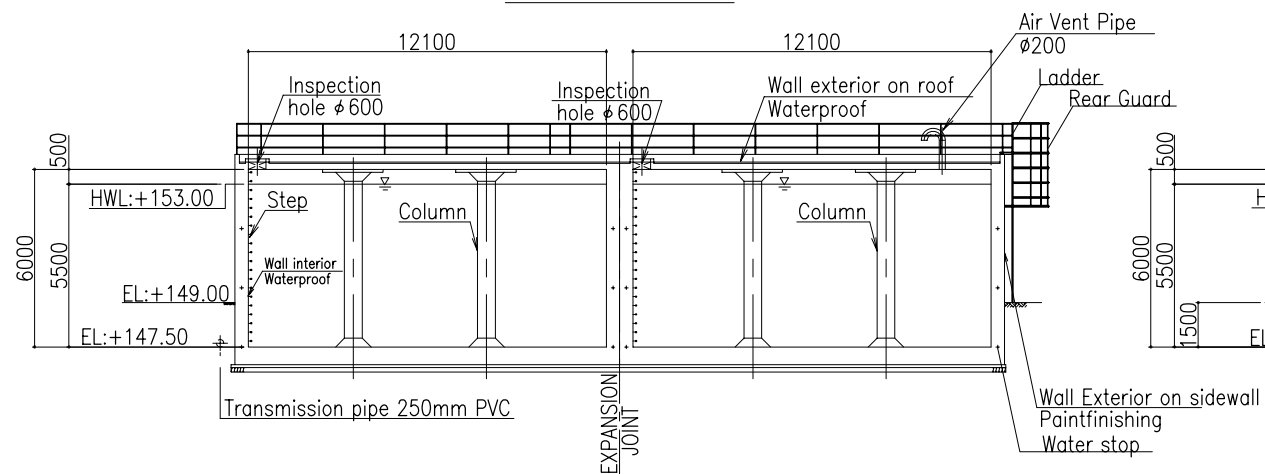


KEY PLAN

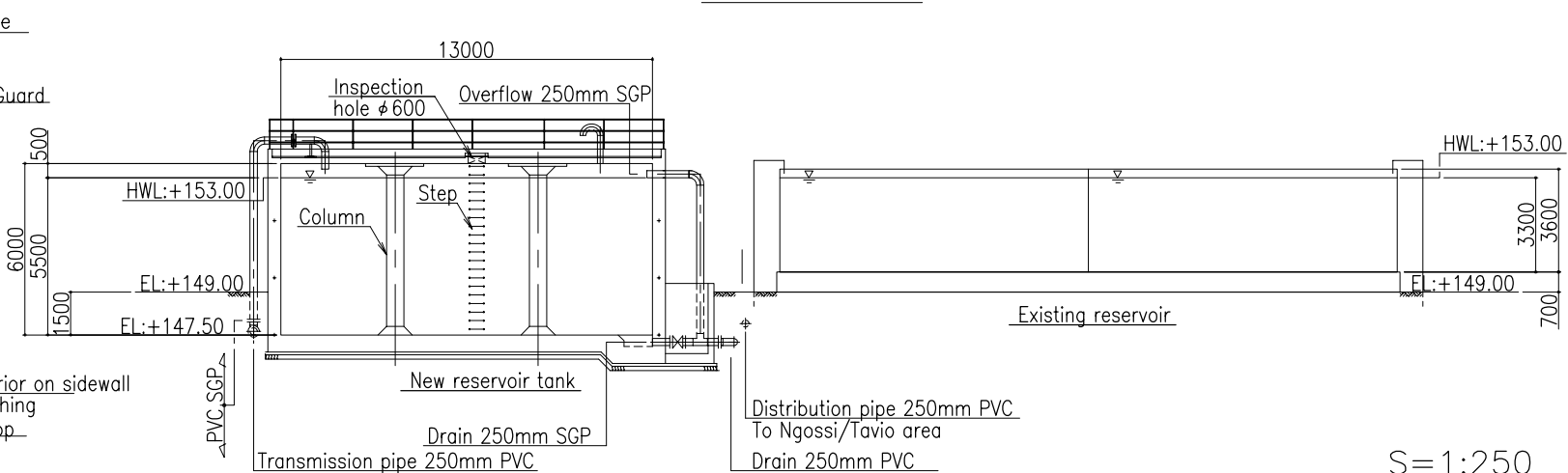
PLAN



A-A SECTION



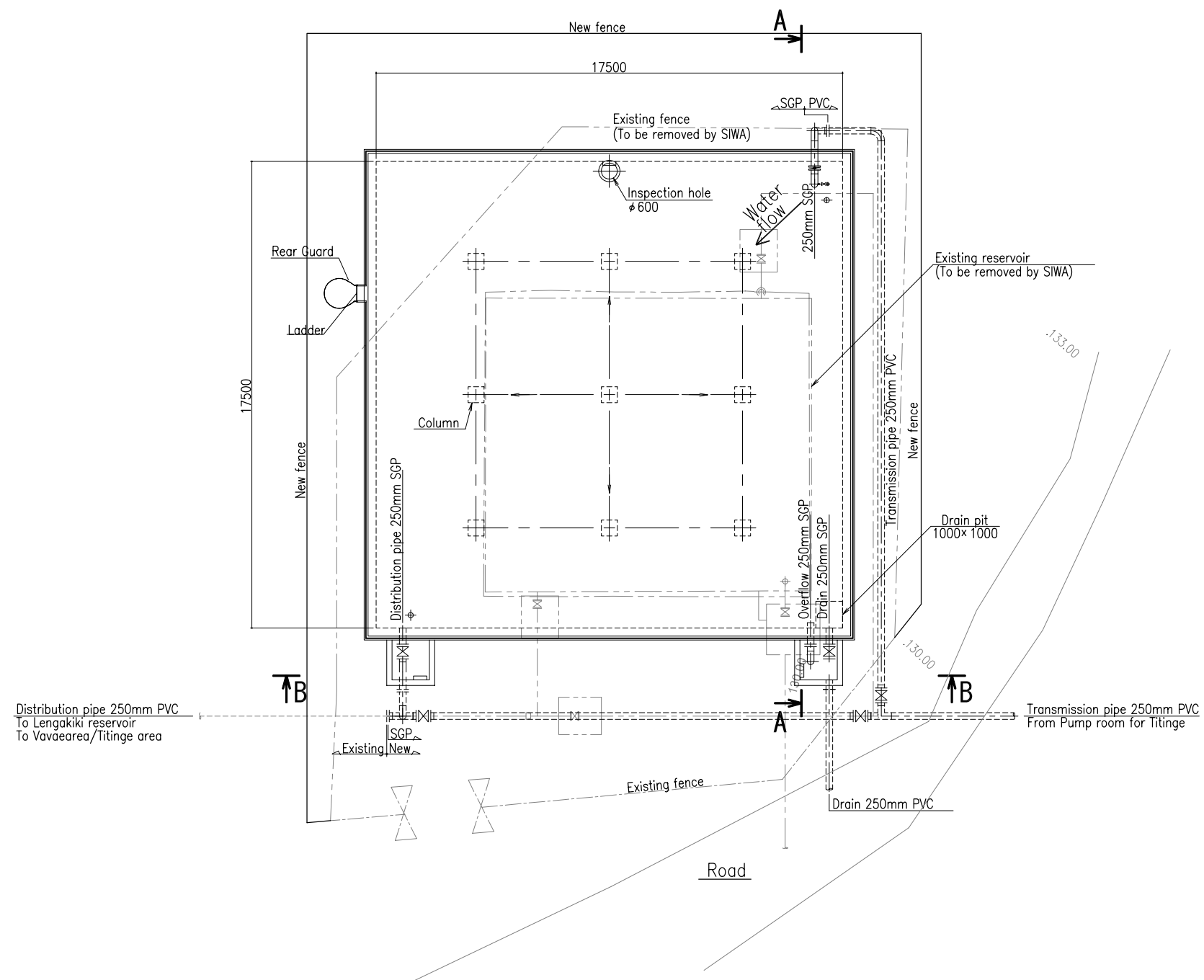
B-B SECTION



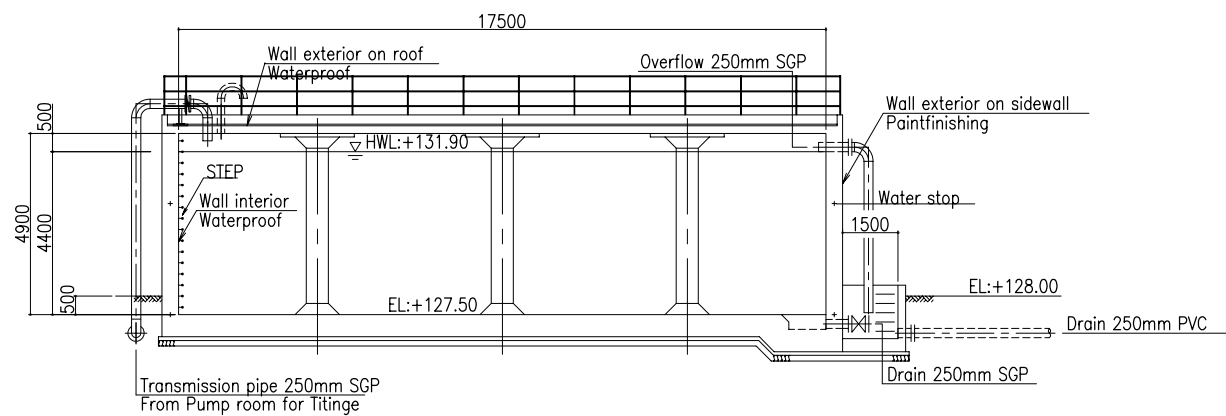
SWS-15 夕サへ配水池平面図・断面図

S=1:250

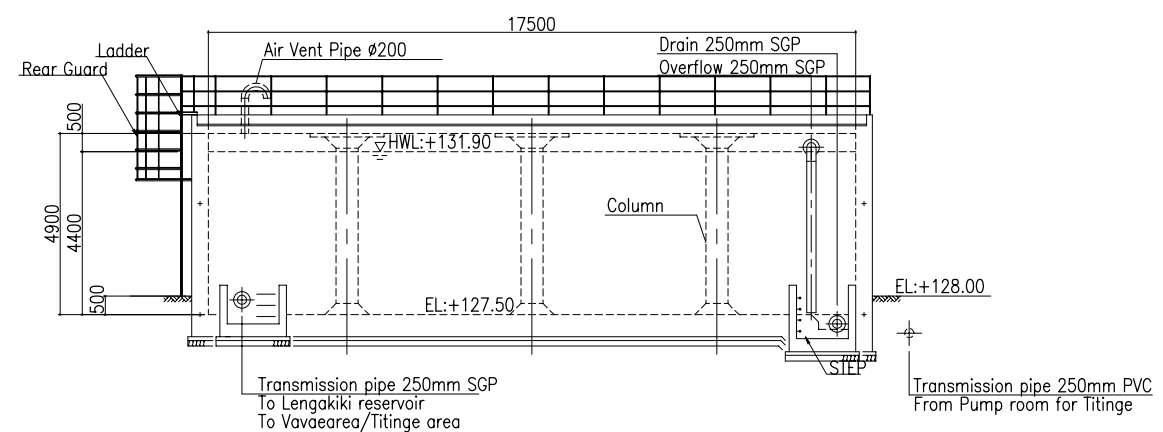
PLAN



A-A SECTION



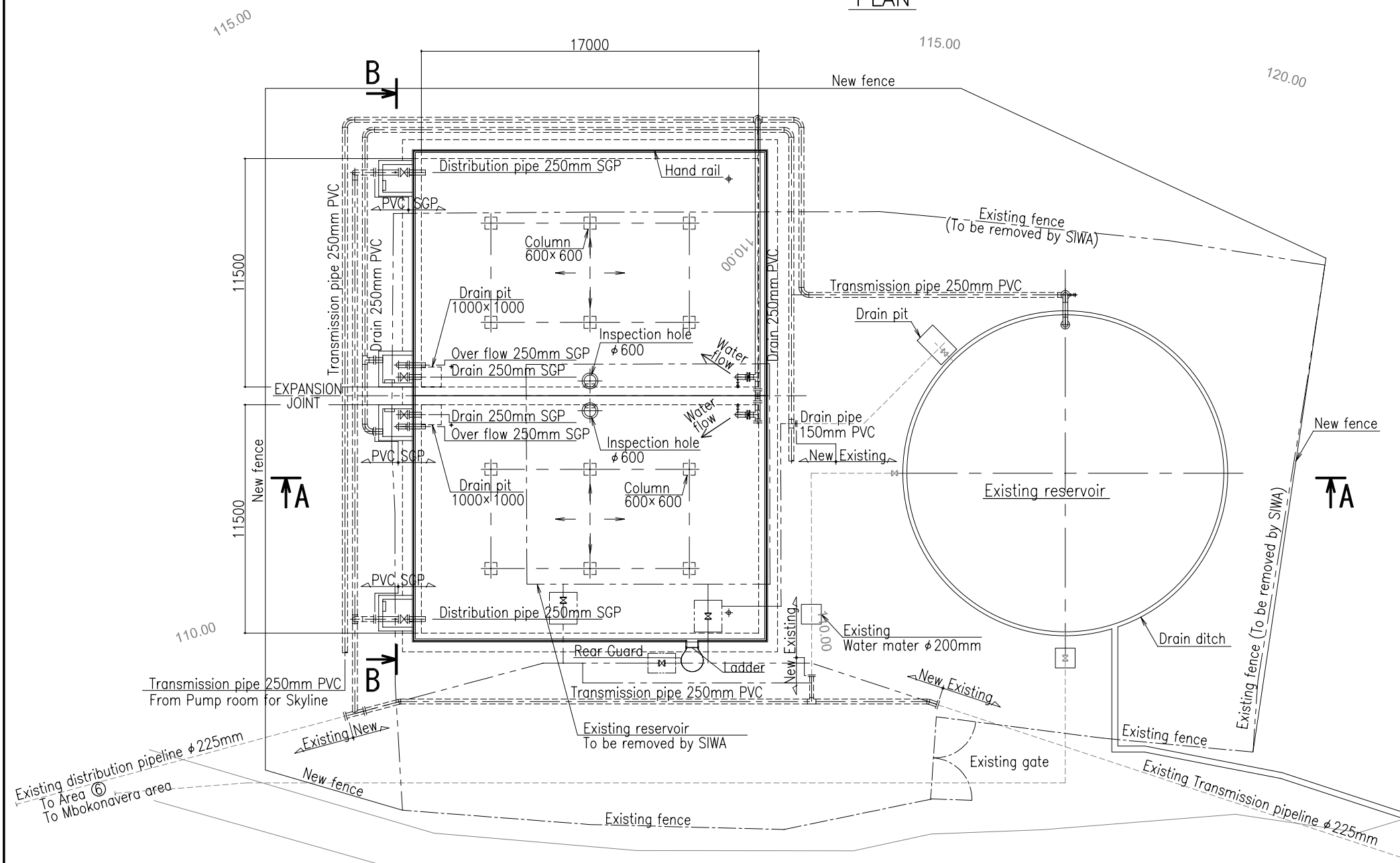
B-B SECTION



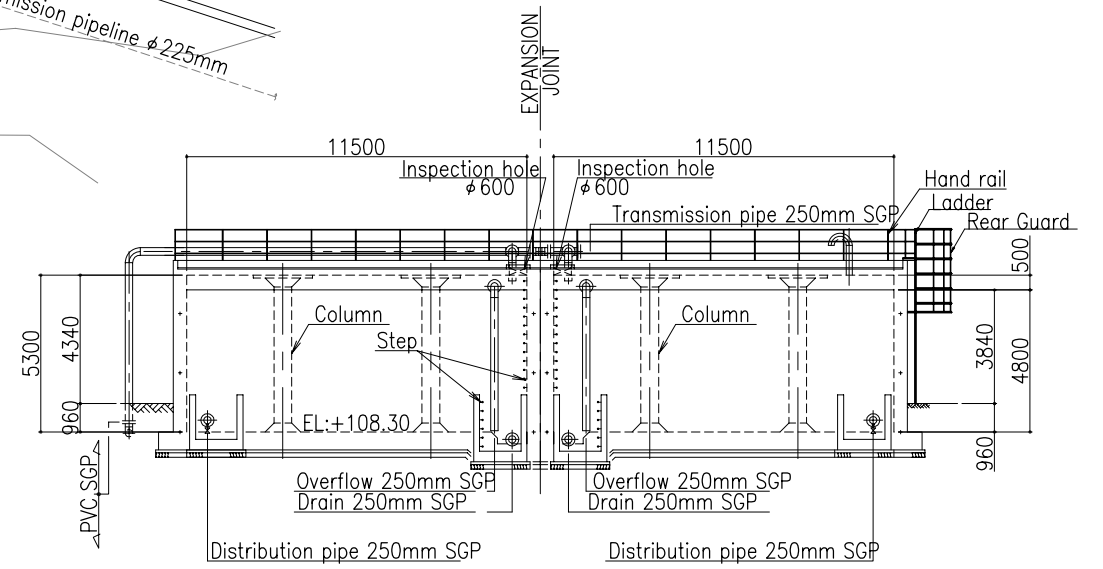
S=1:200

SWS-16 ティティンゲ配水池平面図・断面図

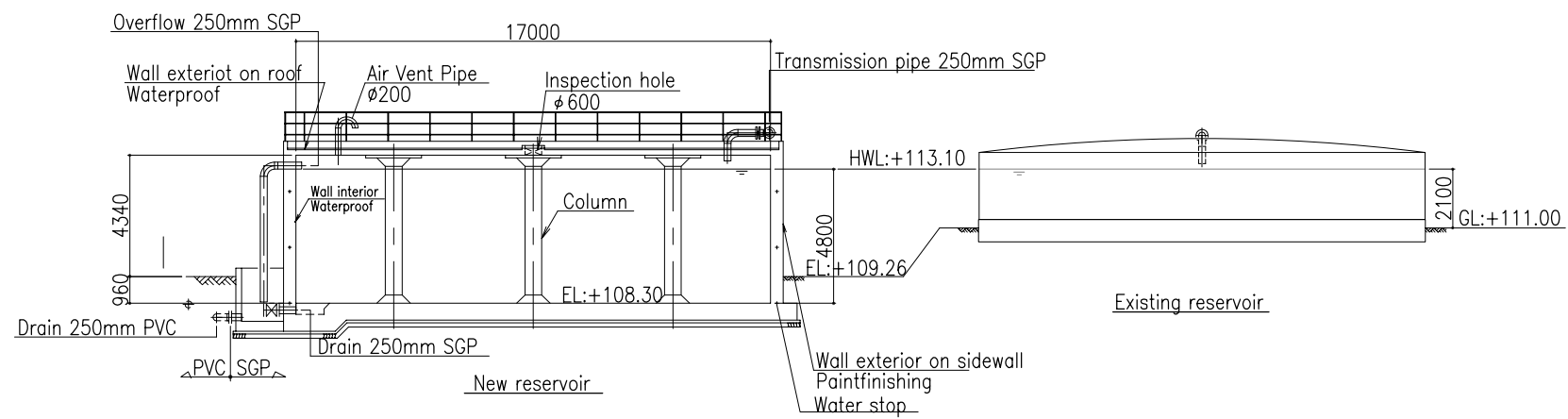
PLAN



B-B SECTION

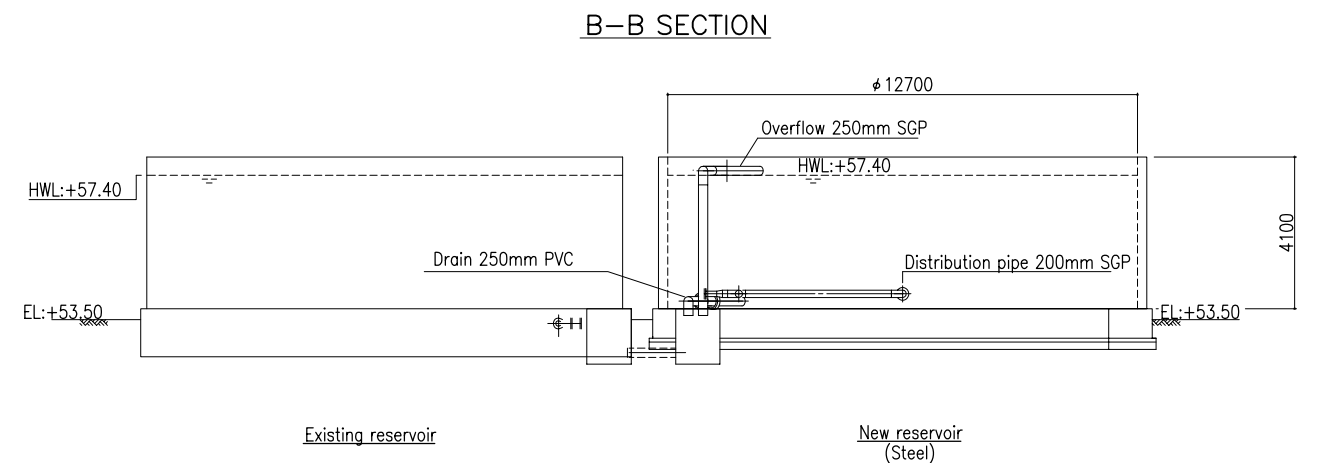
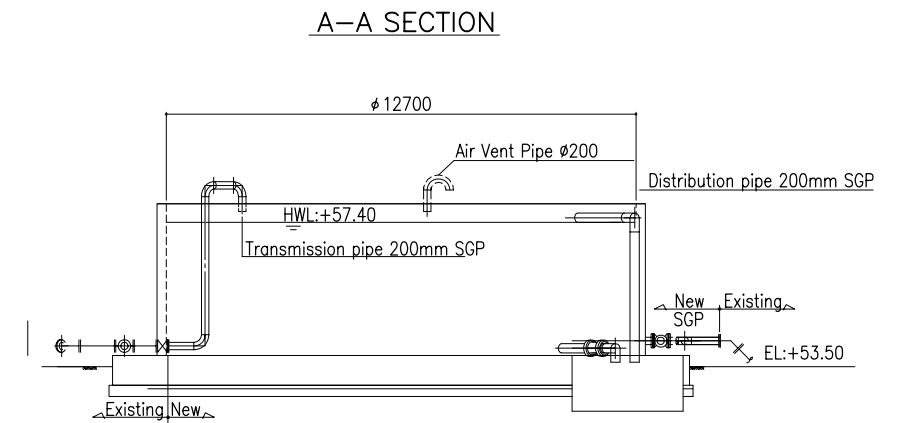
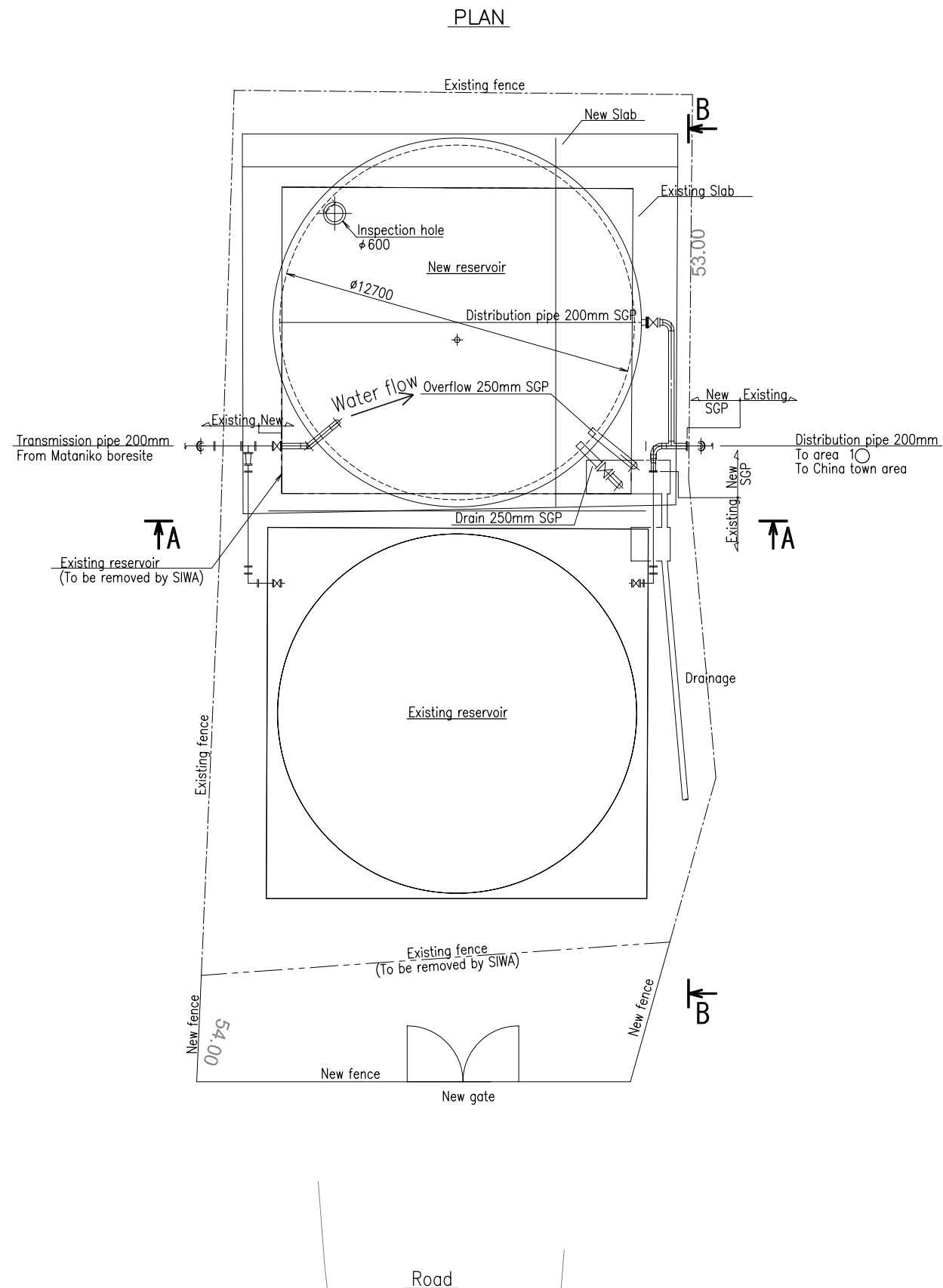


A-A SECTION



S=1:250

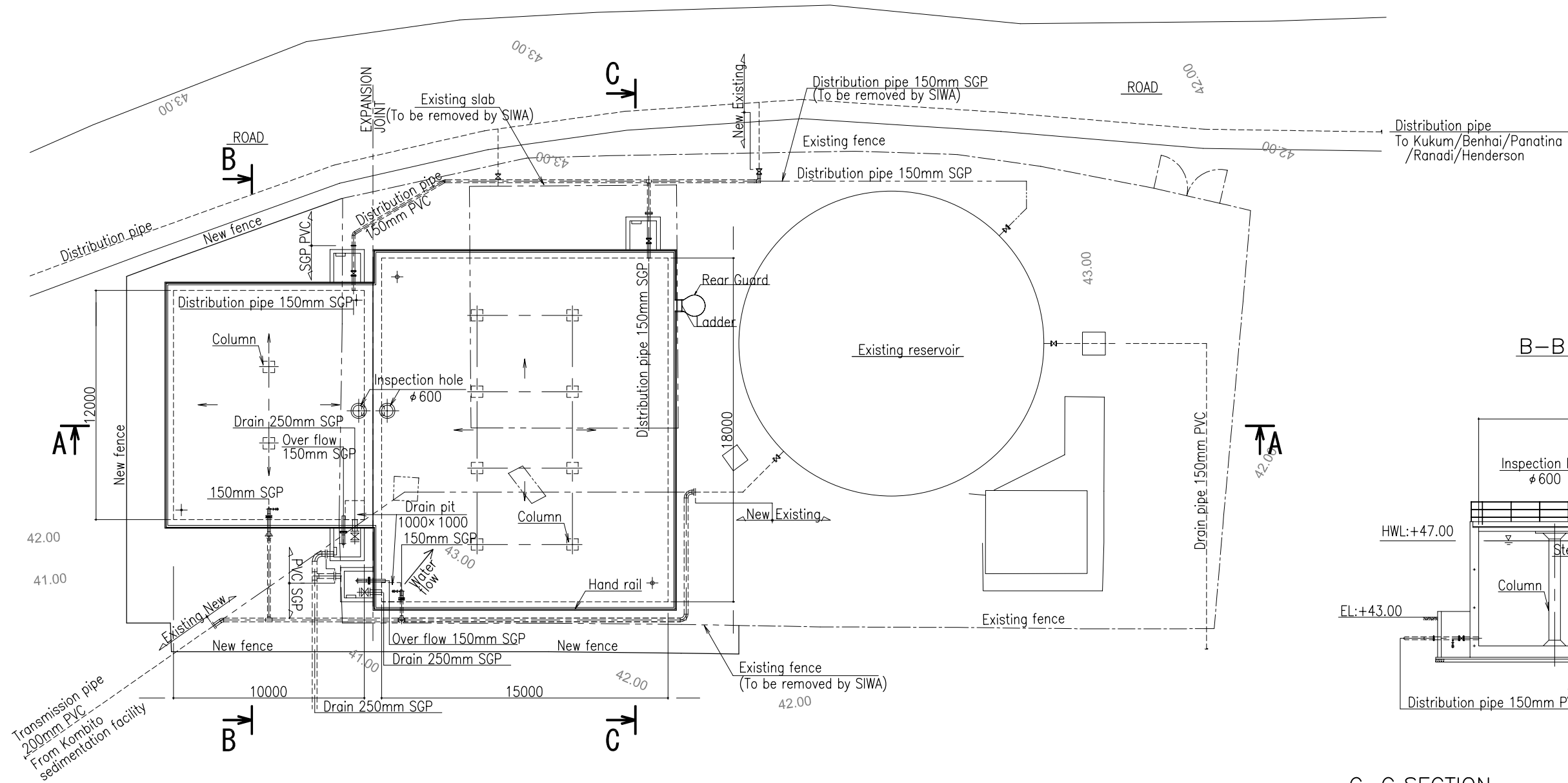
SWS-17 スカイライン配水池平面図・断面図



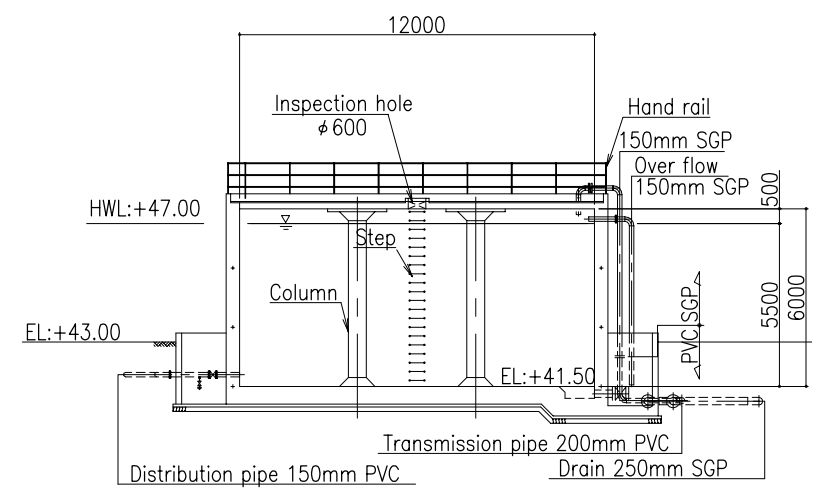
SWS-18 ローア・ウエスト・コラア配水池平面図・断面図

S=1:200

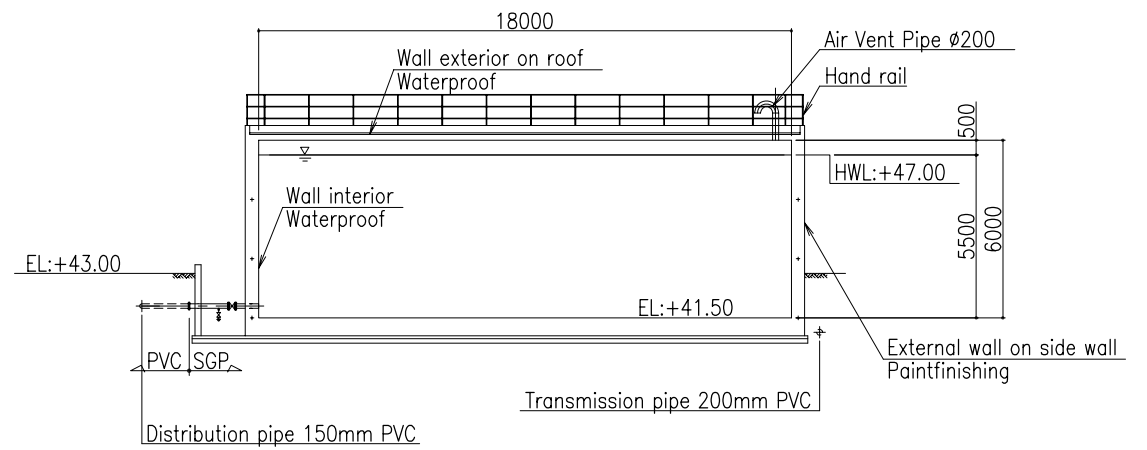
PLAN



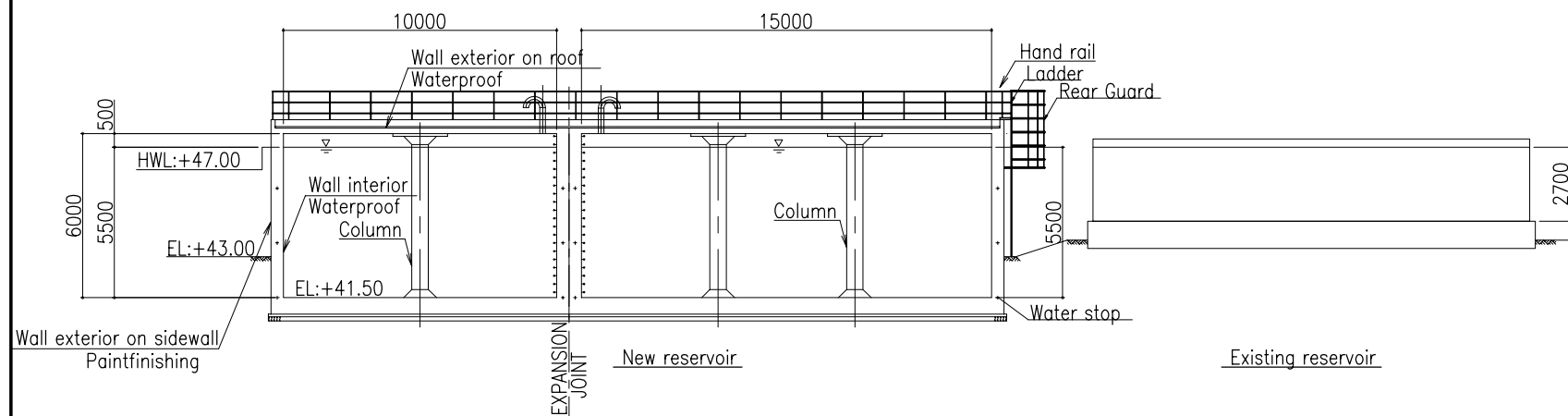
B-B SECTION



C-C SECTION



A-A SECTION



S=1:250

SWS-19 パナチナ配水池平面図・断面図



凡例:

- 新規井戸
- 既存配水池

SWS-20 アウキ市要請施設配置図