

## *Figures*

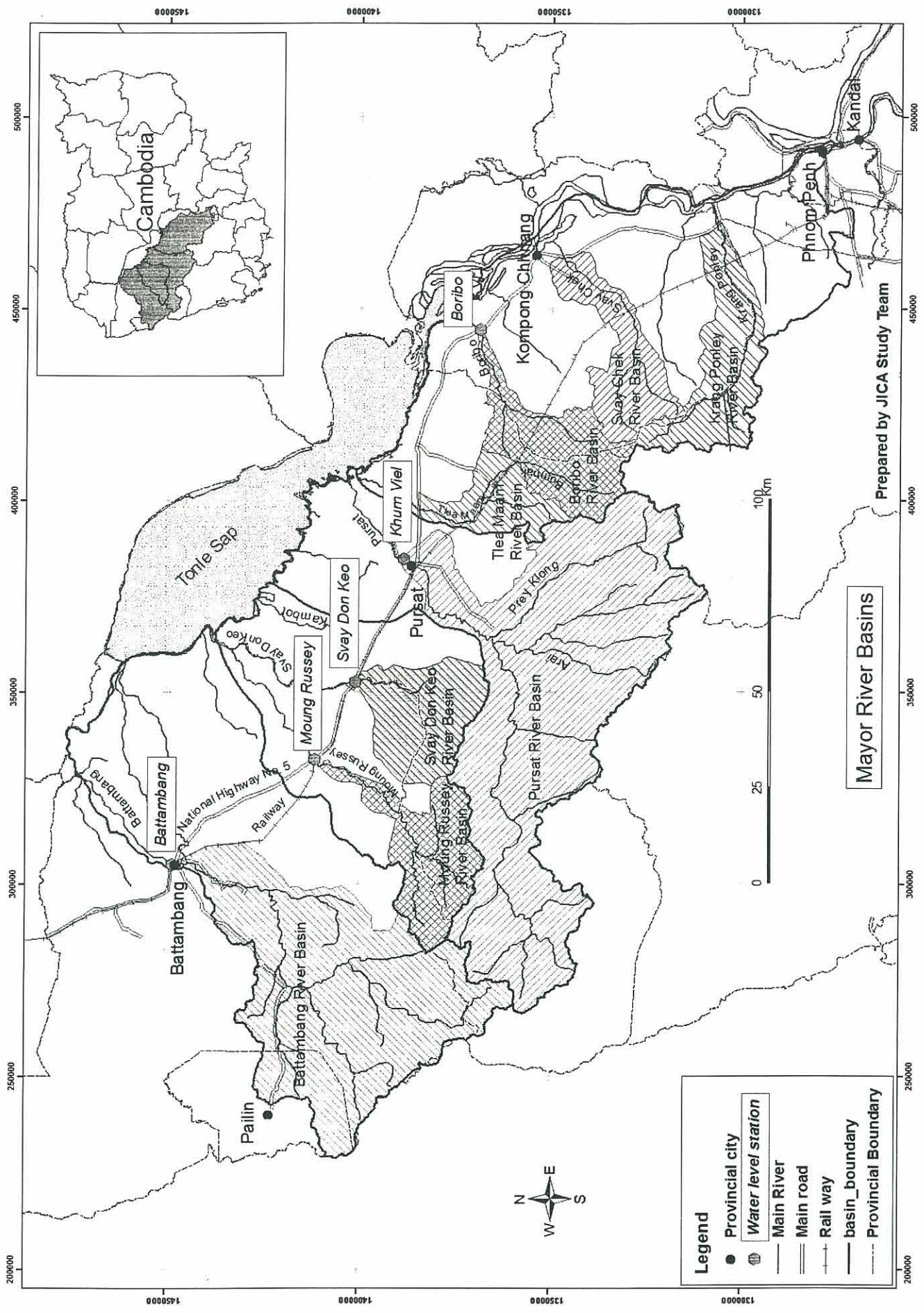


Figure 3.2-1 Major River Basins

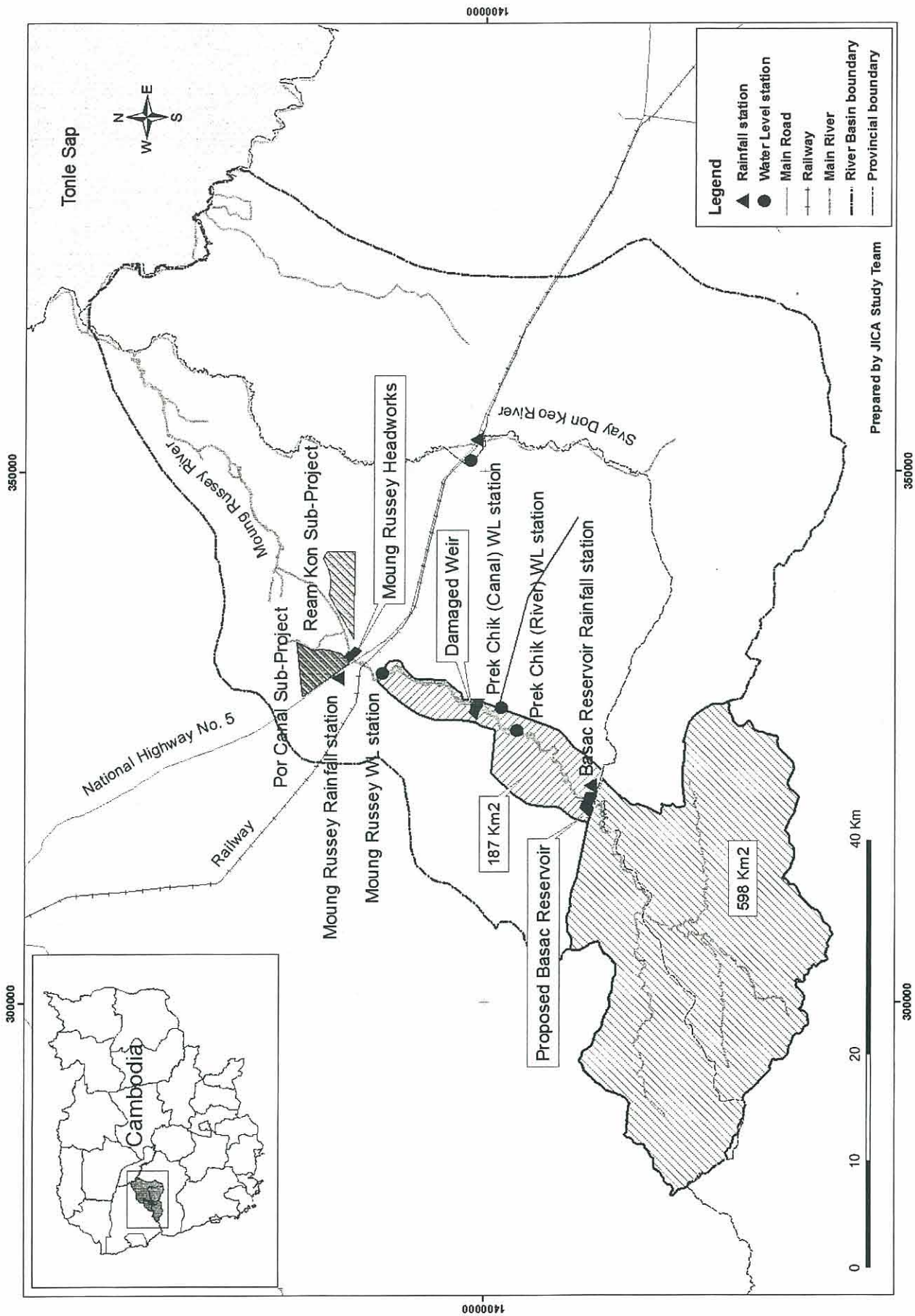


Figure 3.2-2 Catchment Area of Moung Russey Headworks, and Ream Kon and Por Canal Sub-Projects

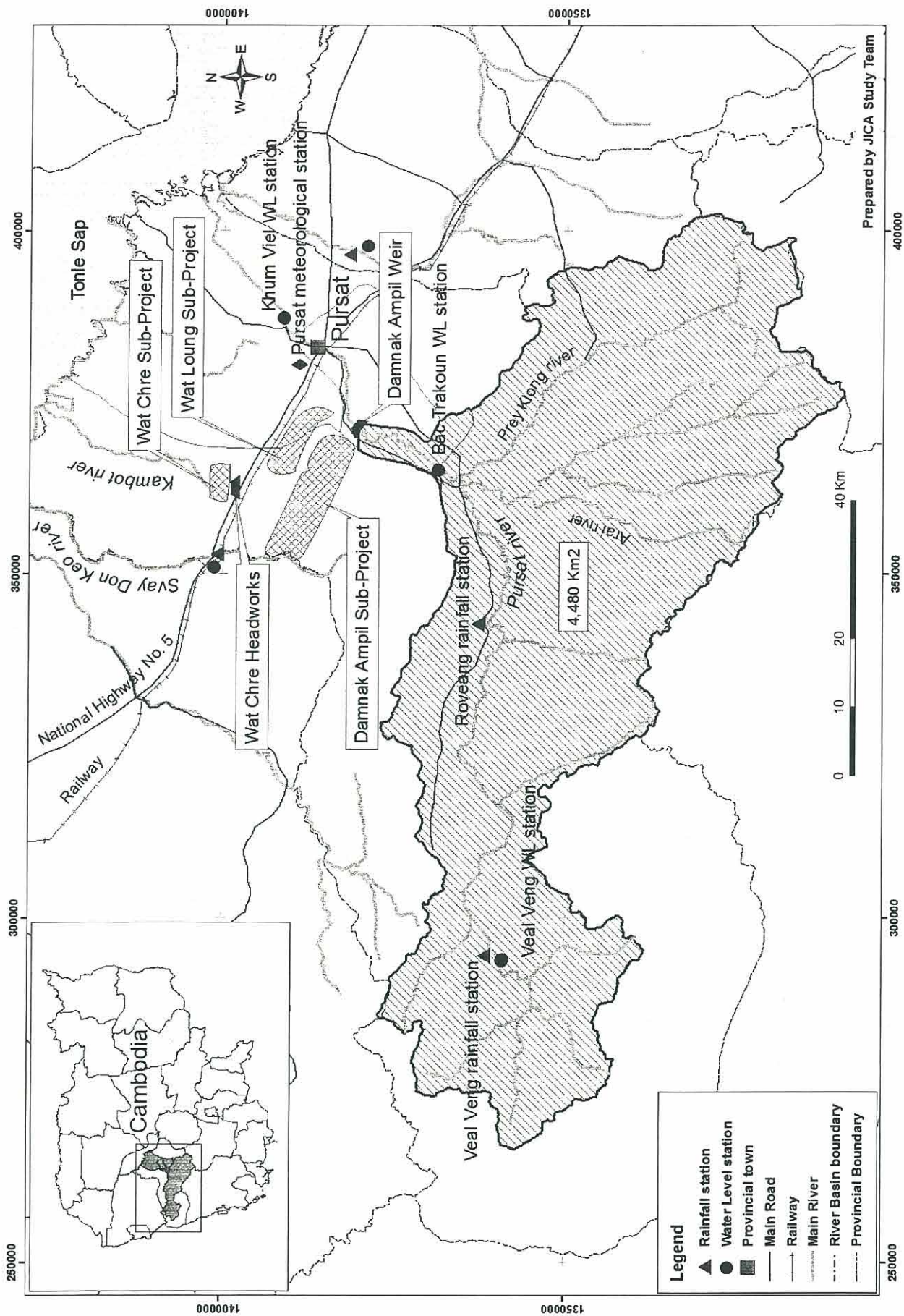


Figure 3.2-3 Catchment Area of Damnak Ampil Weir, and Wat Loung and Wat Chre Sub-Projects

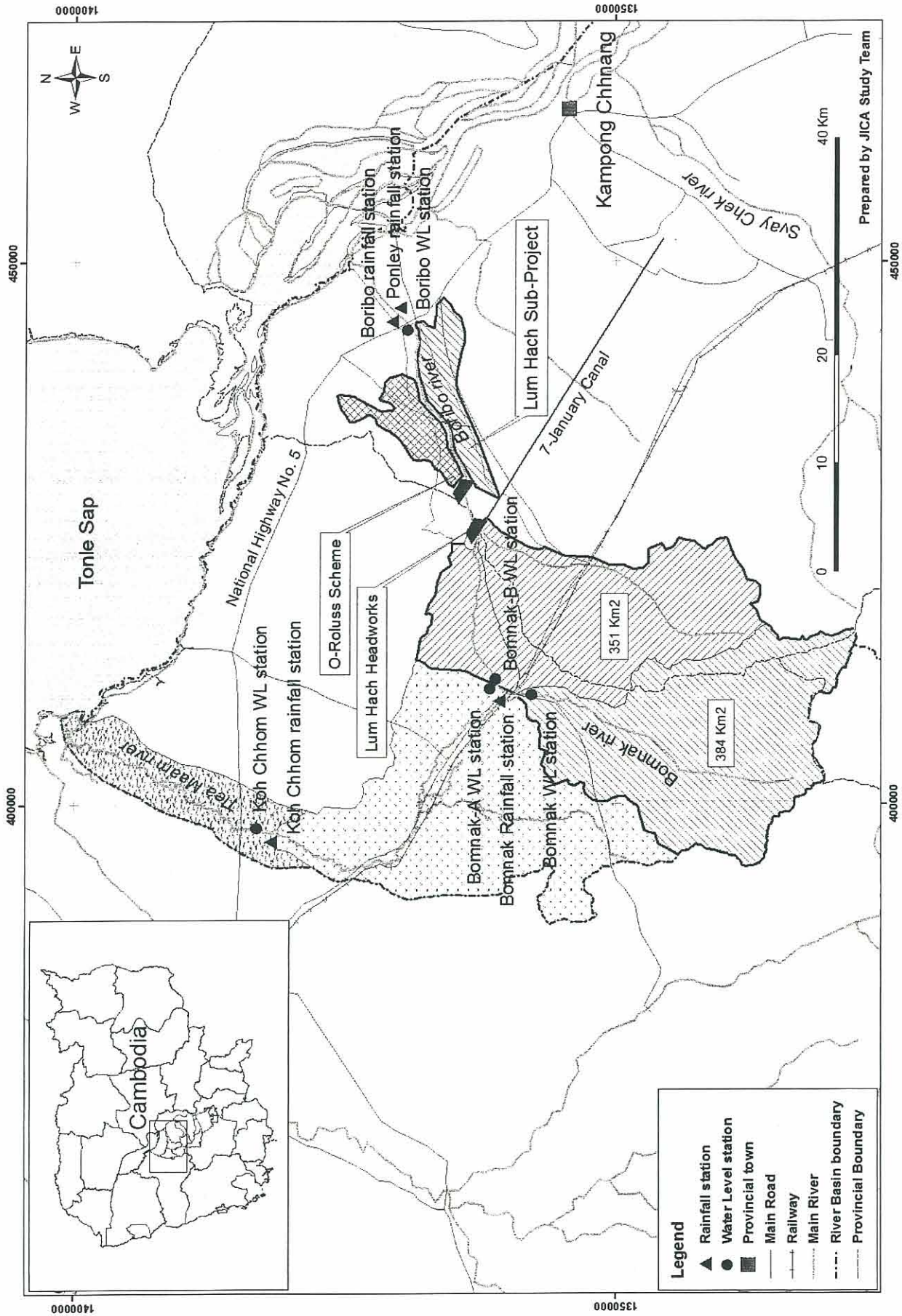


Figure 3.2-4 Catchment Area of Lum Hach Headworks and Lum Hach Sub-Project

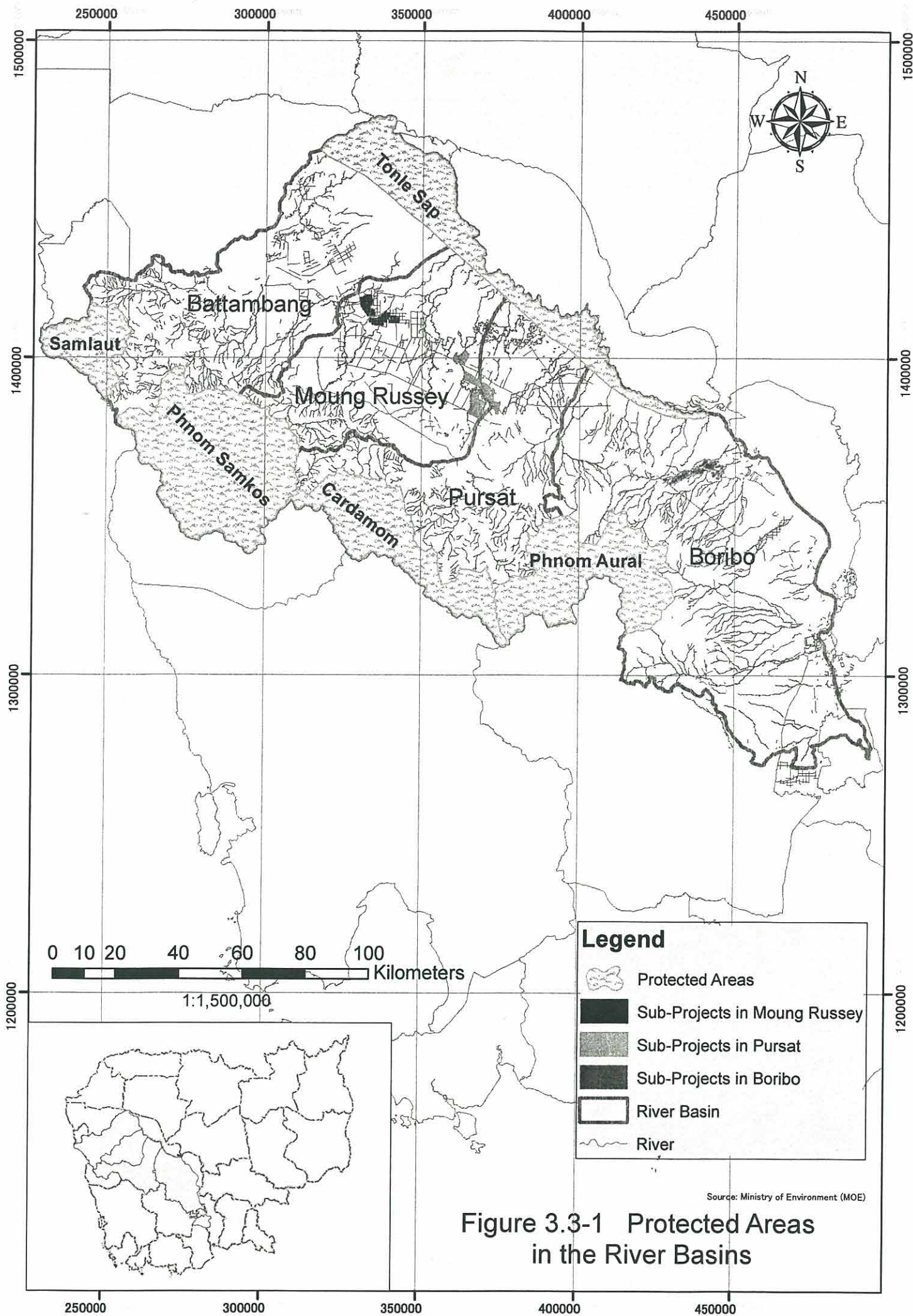
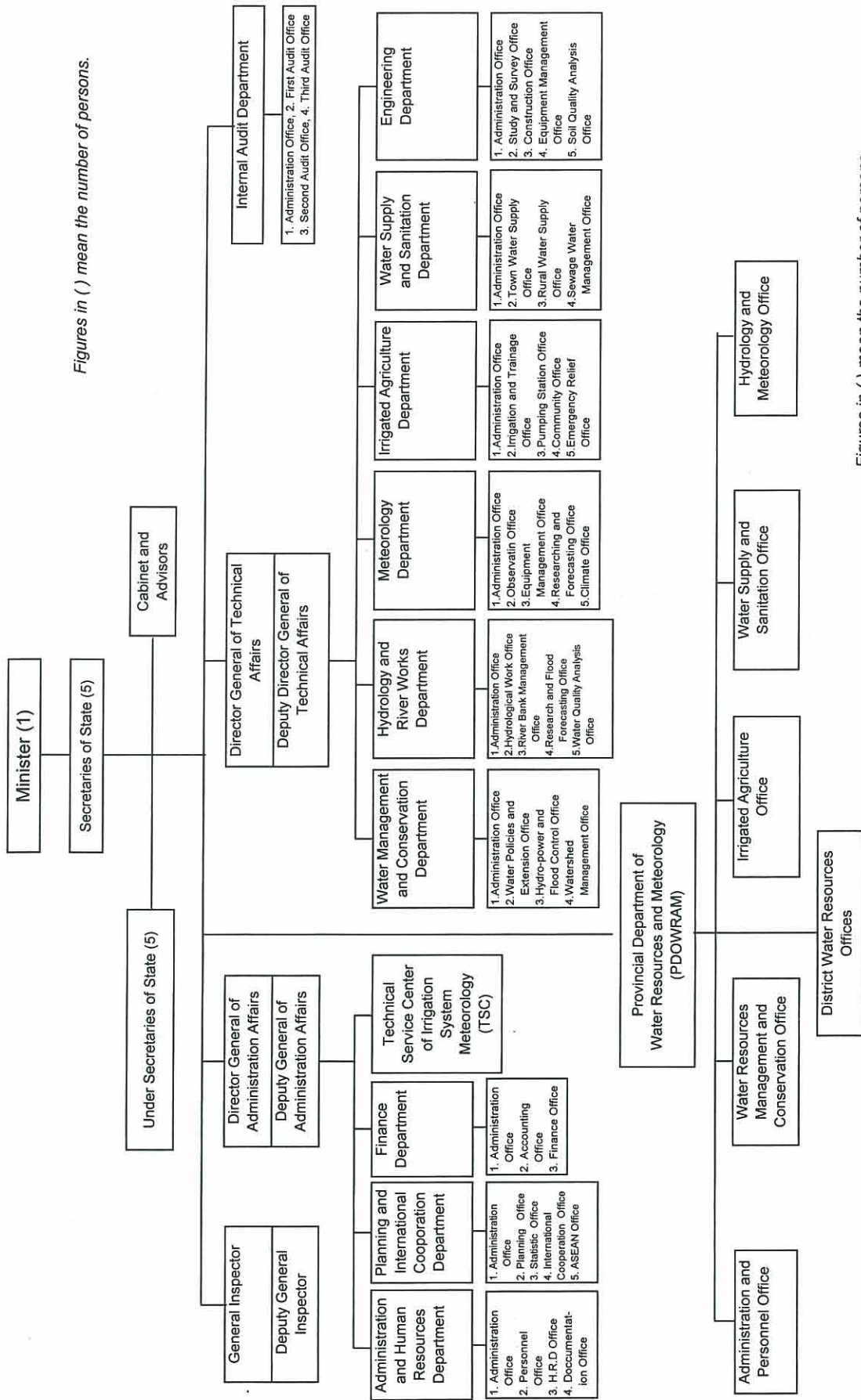


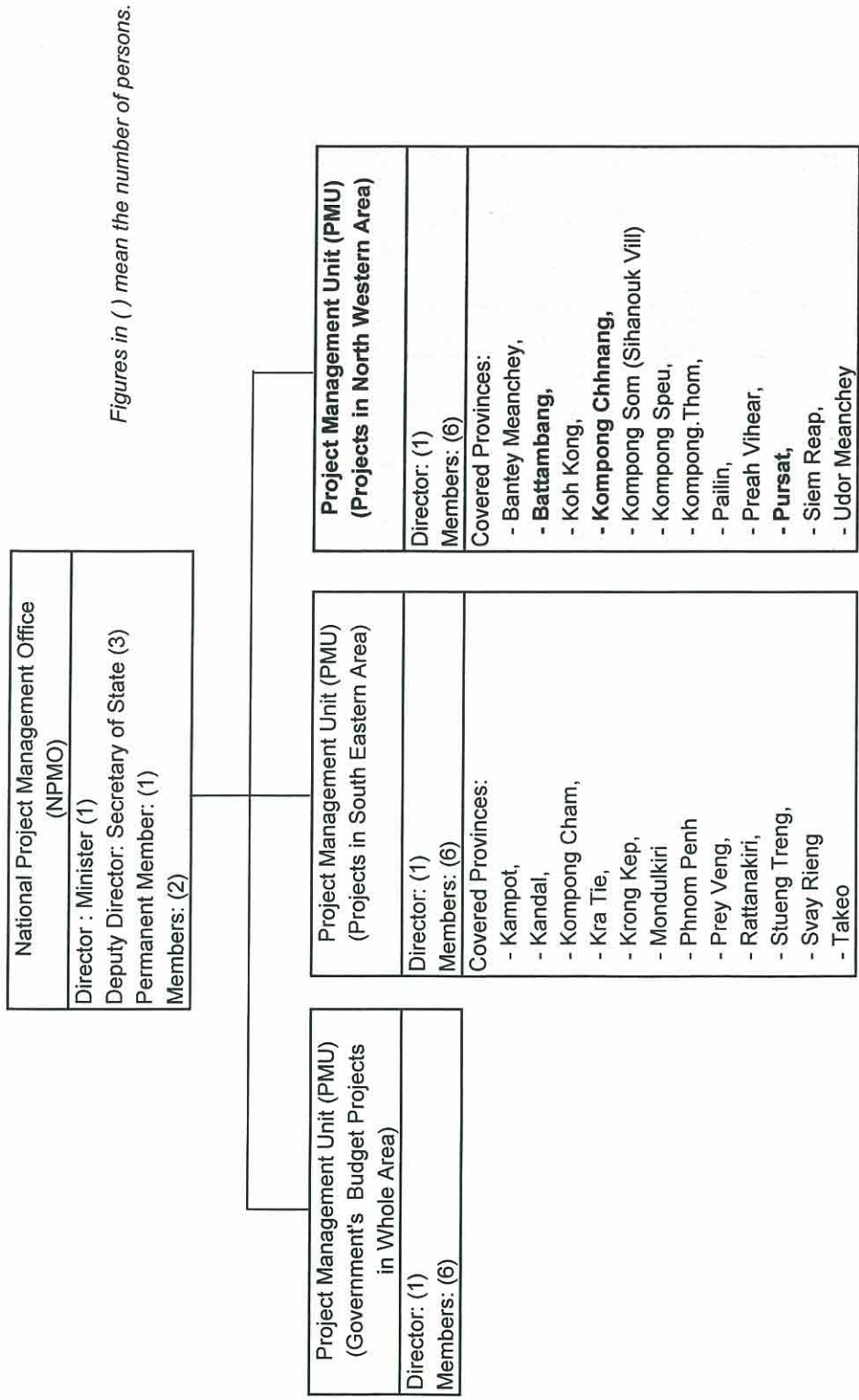
Figure 3.3-1 Protected Areas in the River Basins



Figures in ( ) mean the number of persons.

Figures in ( ) mean the number of persons.

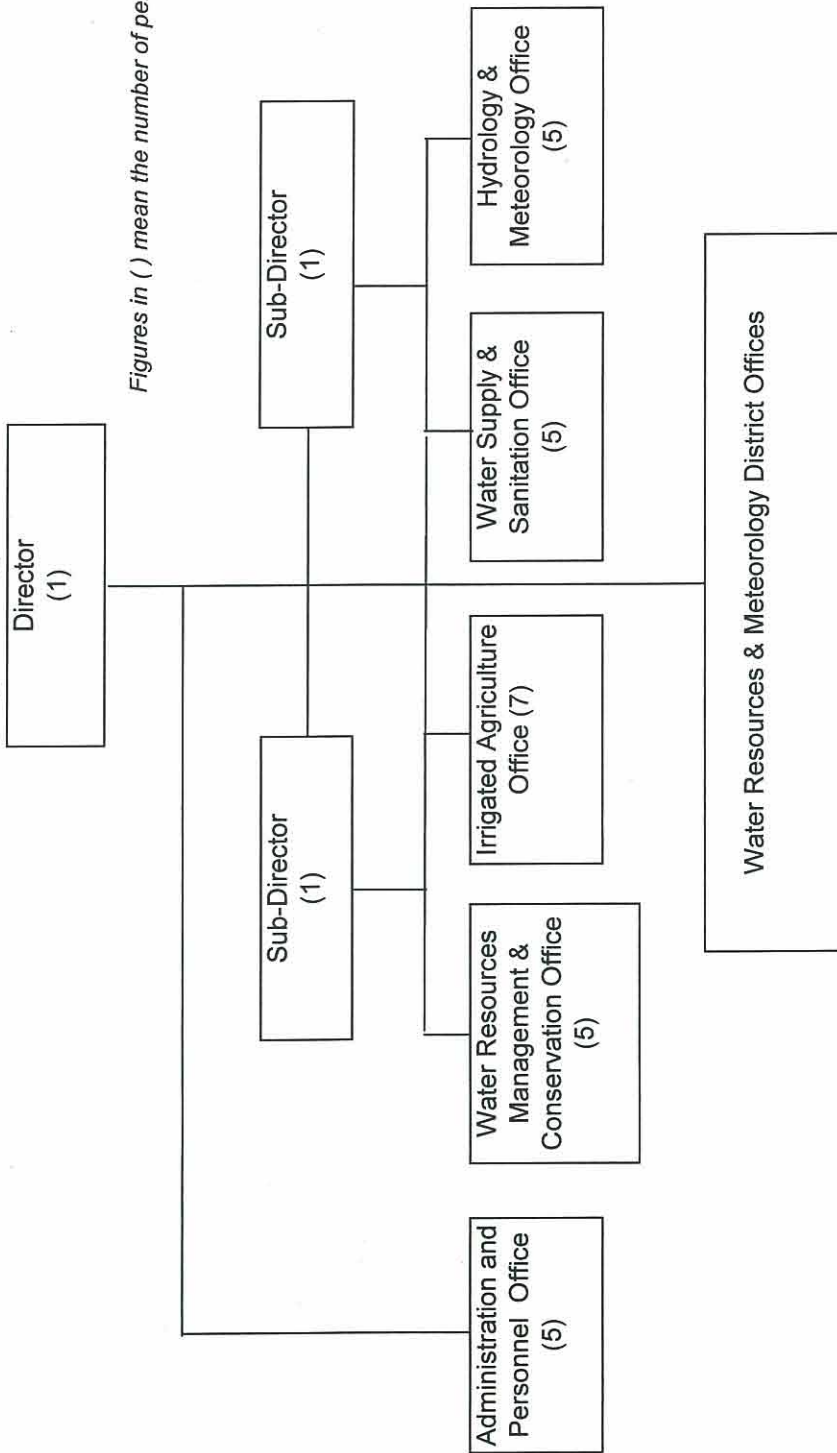
**Figure 3.10-1 Organizational Structure of Ministry of Water Resources and Meteorology**



**Figure 3.10-2 Organizational Structure of National Project Management Office (NPMO)**



**Kompong Chhnang Province**



Figures in ( ) mean the number of persons.

PDOWRAM:	30 persons
District Offices :	3 persons
<b>Total :</b>	<b>33 persons</b>

**Figure 3.10-3 Organizational Structure of PDOWRAM**

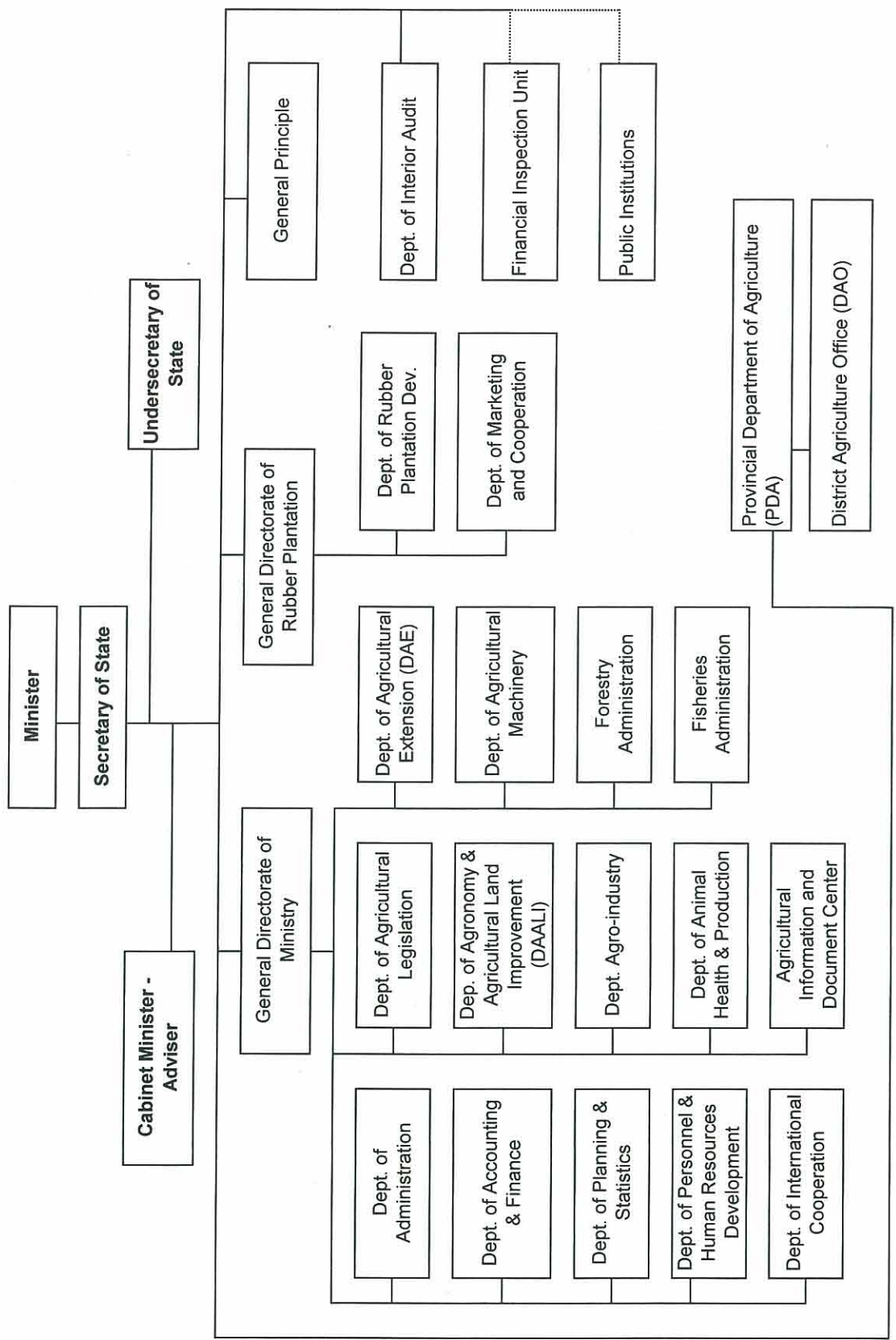


Figure 3.10-4 Organizational Structure of Ministry of Agriculture, Forestry and Fisheries

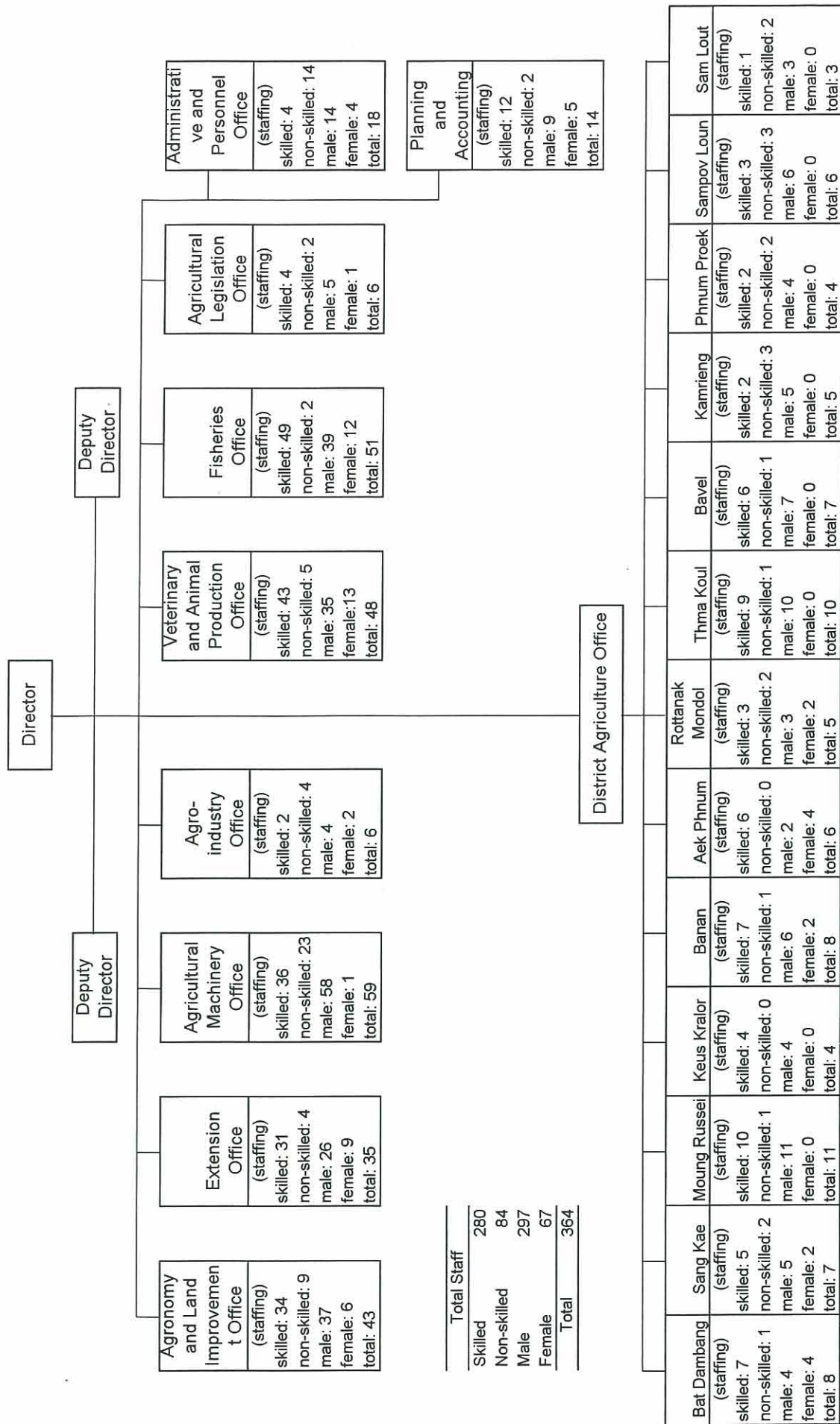
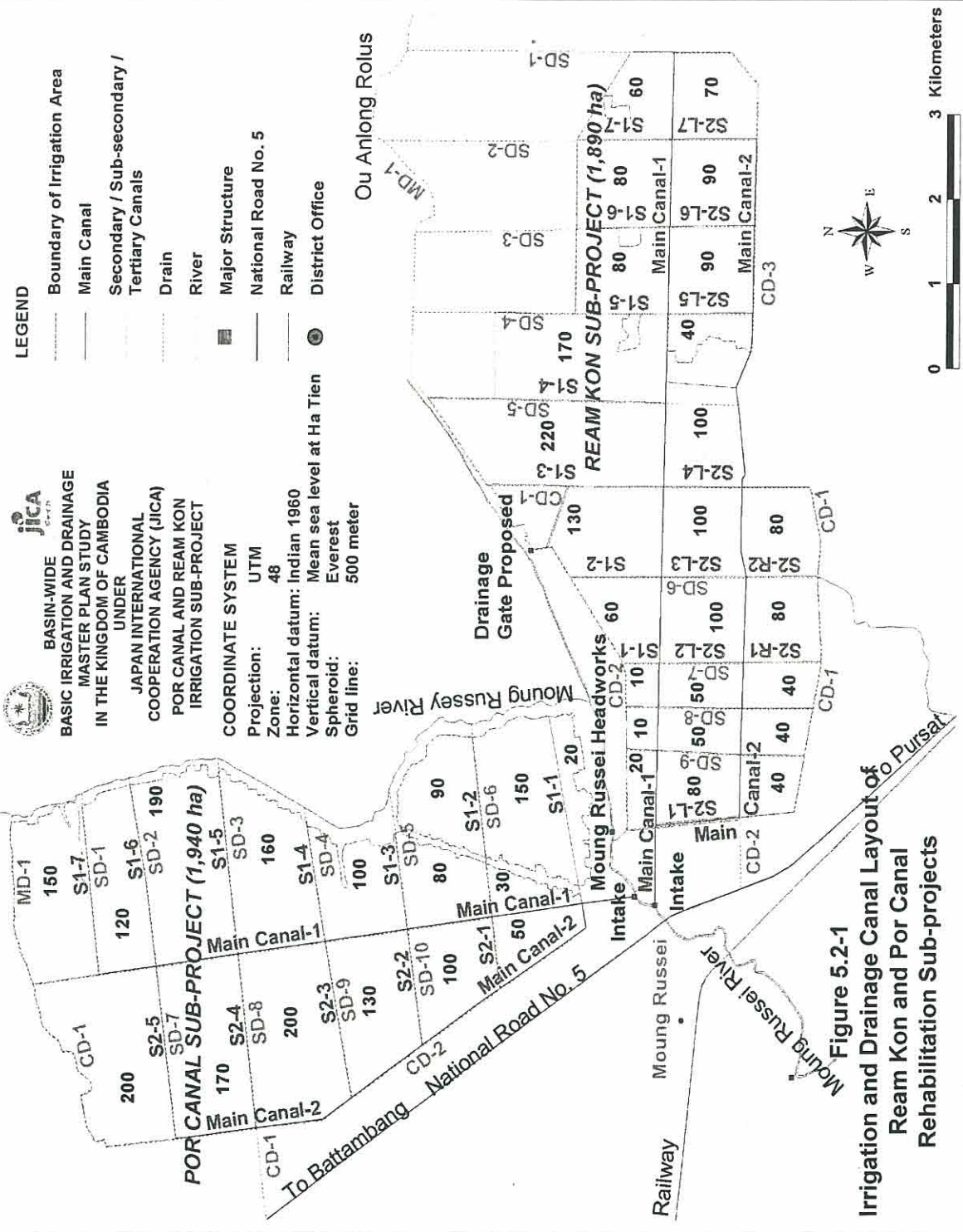


Figure 3.10-5 Organizational Structure of Provincial Department of Agriculture, Battambang



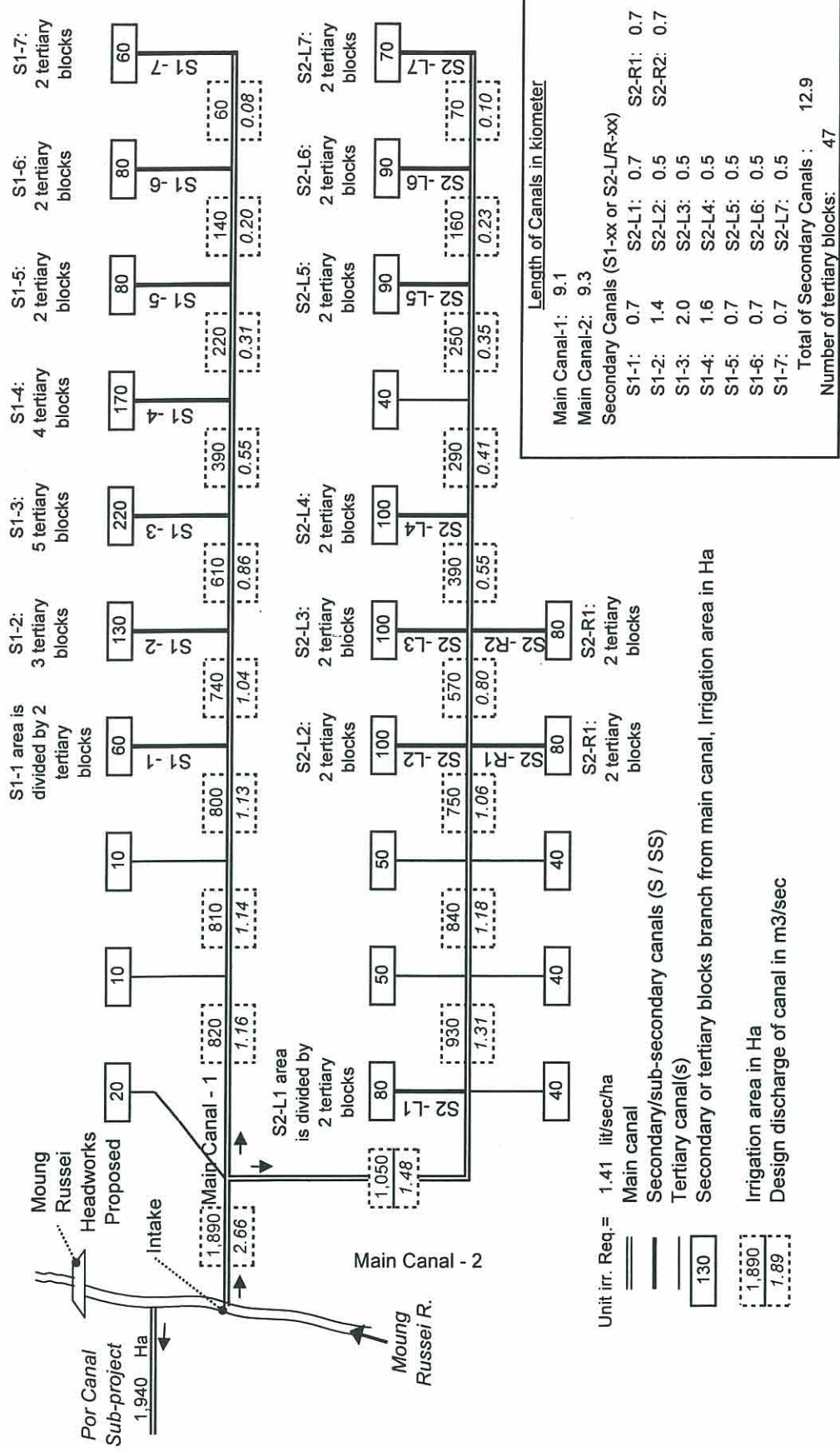


Figure 5.2-2 Irrigation Area Diagram of Ream Kon Rehabilitation Sub-project

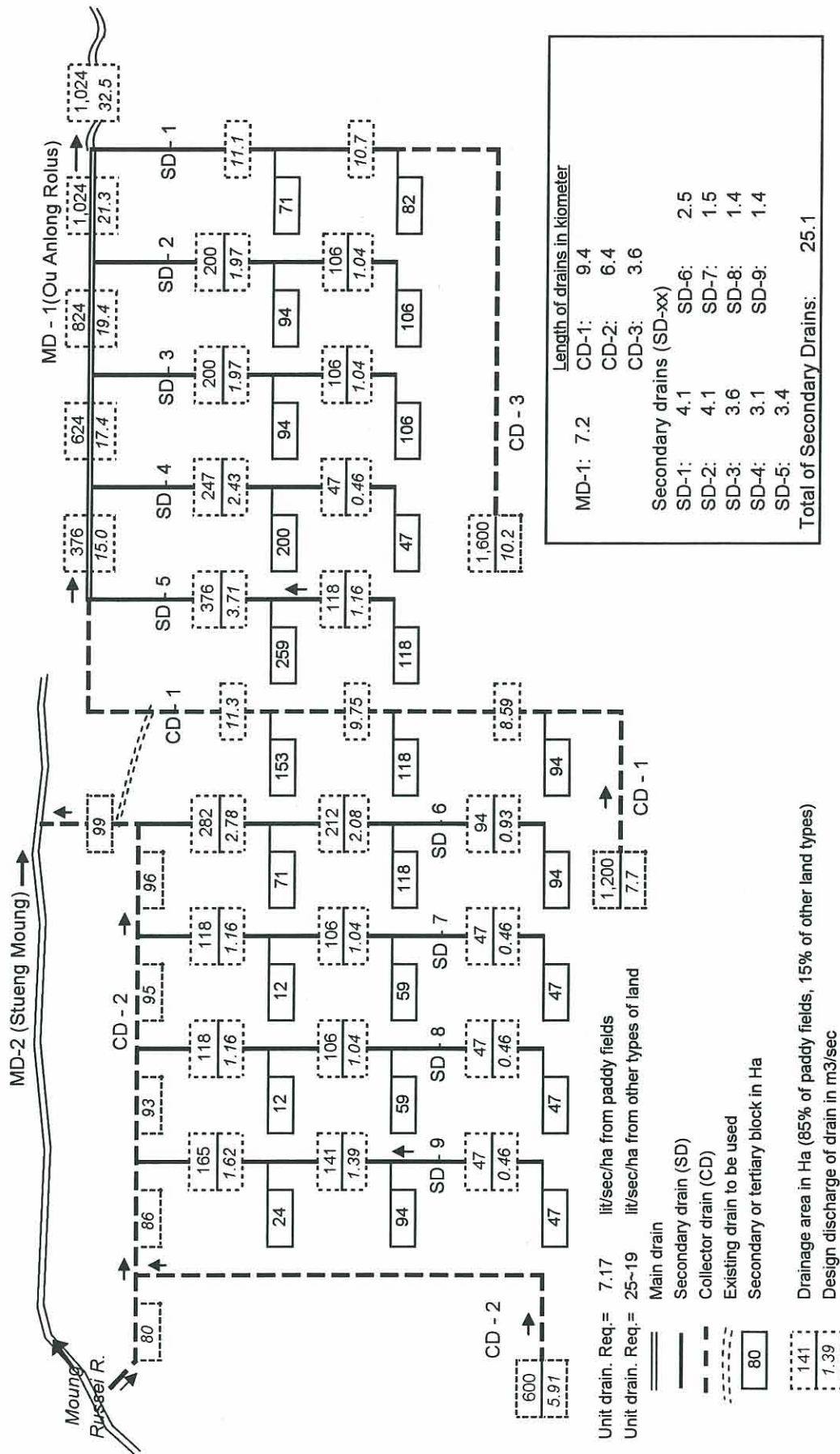
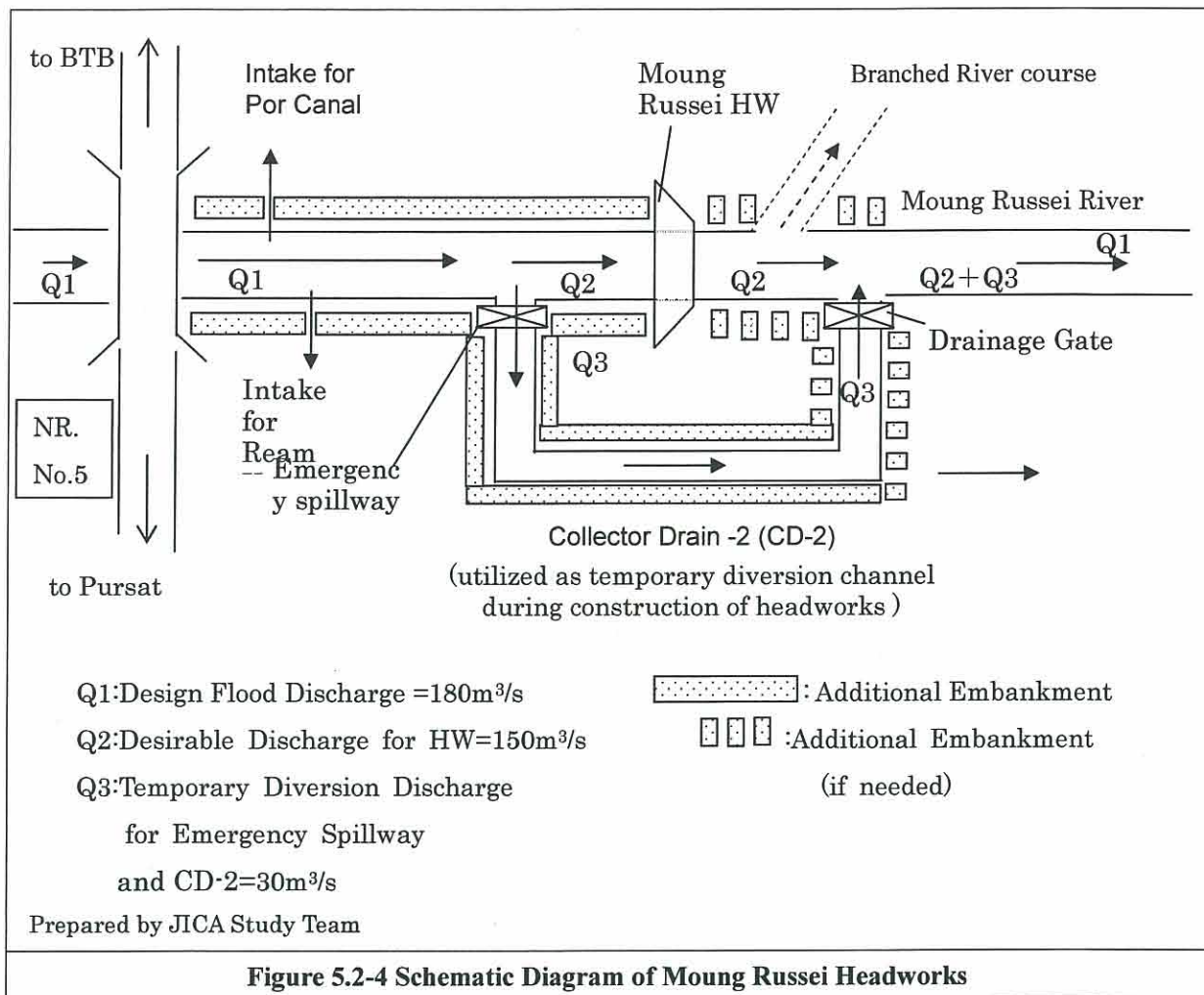
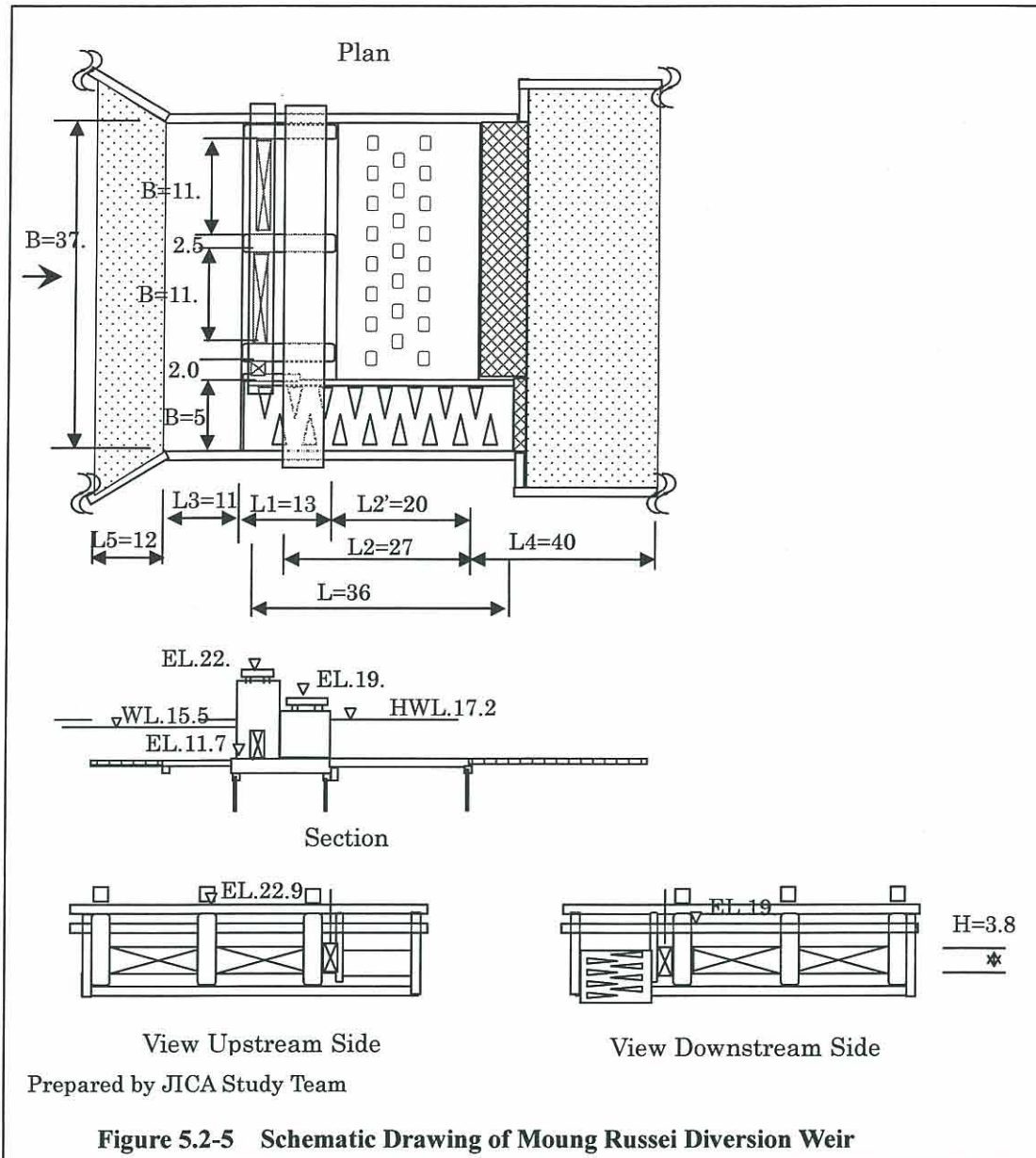
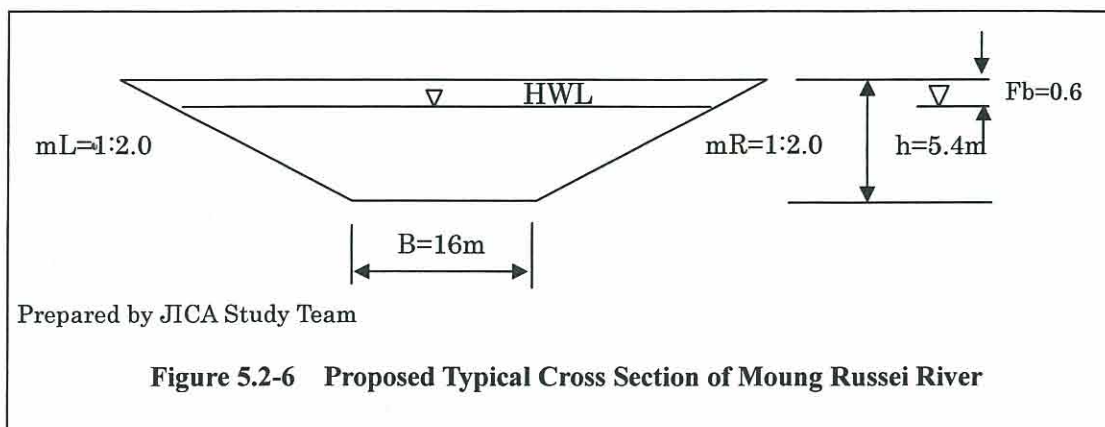


Figure 5.2-3 Drainage Area Diagram of Ream Kon Rehabilitation Sub-project





**Figure 5.2-5 Schematic Drawing of Moug Russei Diversion Weir**



**Figure 5.2-6 Proposed Typical Cross Section of Moug Russei River**