

DESIGN SLOPE OF RIVERBED	DESIGN DISCHARGE	DESIGN EXCAVATION WIDTH	DESIGN RIVERBED ELEVATION	DESIGN SLOPE OF LEVEE CREST	DESIGN CREST ELEVATION	DESIGN WATER LEVEL	ORIGINAL RIVERBED ELEVATION	LEFT BANK GROUND ELEVATION	RIGHT BANK GROUND ELEVATION	ACCUMULATIVE DISTANCE	DISTANCE	STATION No.
				1/4500 1:0.0002222	119.80							M1
												M2
												M3
												M4
												M5
												M6
												M7
												M8
												M9
												M10
												M11
												M12
												M13
												M14
												M15
												M16
												M17
												M18
												M19
												M20
												M21
												M22
												M23
												M24
												M25
												M26
												M27
												M28
												M29
												M30
												M31
												M32
												M33
												M34
												M35
												M36
												M37
												M38
												M39
												M40
												M41
												M42
												M43
												M44
												M45
												M46
												M47
												M48
												M49
												M50
												M51
												M52
												M53
												M54
												M55
												M56
												M57
												M58
												M59
												M60
												M61
												M62
												M63
												M64
												M65
												M66
												M67
												M68
												M69
												M70
												M71
												M72
												M73

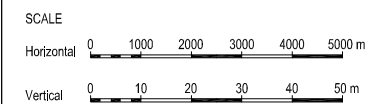
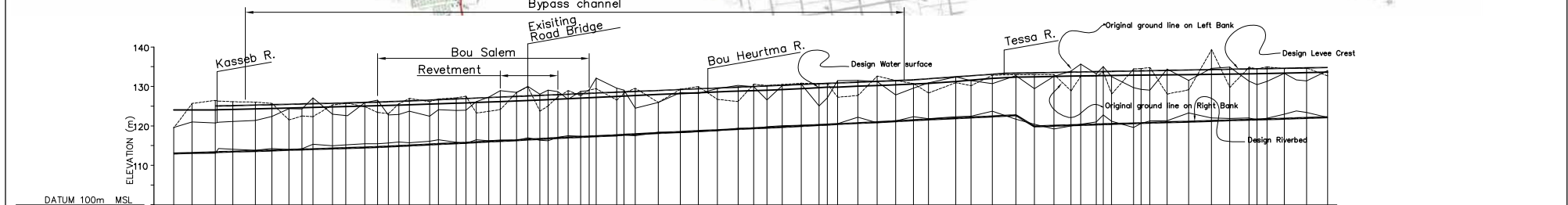
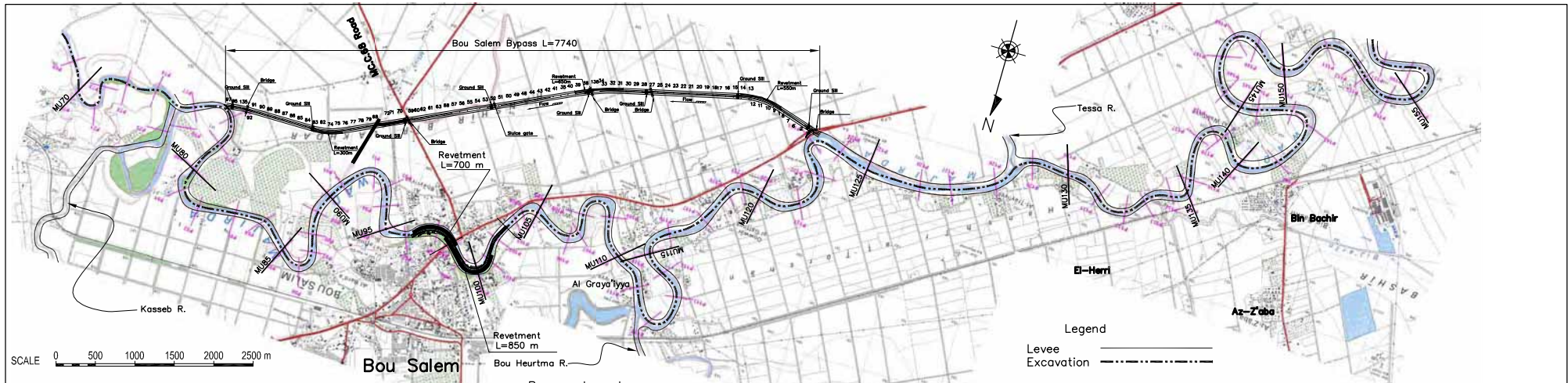


Figure D3.6.2 Profile of Mejerda River Upstream Reach (1/6)

REPUBLIC OF TUNISIA MINISTRY OF AGRICULTURE AND WATER RESOURCES DEPARTMENT OF DAMS AND LARGE HYDRAULIC WORKS		JAPAN INTERNATIONAL COOPERATION AGENCY
THE STUDY ON INTEGRATED BASIN MANAGEMENT FOCUSED ON FLOOD CONTROL IN MEJERDA RIVER		
DRAWING TITLE MEJERDA RIVER UPSTREAM REACH PLAN AND PROFILE (1/6)	SHEET NO. E-8	
NIPPON KOEI Co., Ltd.		



DESIGN SLOPE OF RIVERBED	1/370	1/3200	1/2000	1/3200	1/2400	1/3200	1/5500
DESIGN DISCHARGE	Q=1840m ³ /s	Q=1840m ³ /s (20y)	Q=1490m ³ /s (20y)	Q=1490m ³ /s (20y)	Q=1490m ³ /s (20y)	Q=1490m ³ /s (20y)	Q=1490m ³ /s (20y)
DESIGN EXCAVATION WIDTH	B=50m	B=50m	B=50m	B=50m	B=50m	B=50m	B=40m
DESIGN RIVERBED ELEVATION	113.00	113.15	113.33	113.47	113.65	113.78	113.92
DESIGN SLOPE OF LEVEE	1/4200	1/4200	1/2400	1/2400	1/1400	1/5500	1/5500
DESIGN CREST ELEVATION	124.99	125.02	125.02	125.14	125.27	125.37	125.43
DESIGN WATER LEVEL	124.00	124.00	124.00	124.14	124.30	124.44	124.58
ORIGINAL RIVERBED ELEVATION	113.11	113.05	113.06	113.06	113.06	113.06	113.06
LEFT BANK GROUND ELEVATION	119.52	119.58	120.89	120.89	120.89	120.89	120.89
RIGHT BANK GROUND ELEVATION	119.52	125.69	126.13	126.13	126.13	126.13	126.13
ACCUMULATIVE DISTANCE	29024.13	29489.42	30073.28	30522.16	31070.06	31510.88	31946.78
DISTANCE	321.48	465.29	558.28	592.216	626.02	659.721	693.336
STATION No.	MU73	MU74	MU75	MU76	MU77	MU78	MU79

Figure D3.6.2 Profile of Mejerda River Upstream Reach (2/6)

REPUBLIC OF TUNISIA MINISTRY OF AGRICULTURE AND WATER RESOURCES DEPARTMENT OF DAMS AND LARGE HYDRAULIC WORKS		JAPAN INTERNATIONAL COOPERATION AGENCY
THE STUDY ON INTEGRATED BASIN MANAGEMENT FOCUSED ON FLOOD CONTROL IN MEJERDA RIVER		
DRAWING TITLE	MEJERDA RIVER UPSTREAM REACH PLAN AND PROFILE (2/6)	SHEET NO. E-9
NIPPON KOEI Co., Ltd.		

DF-24

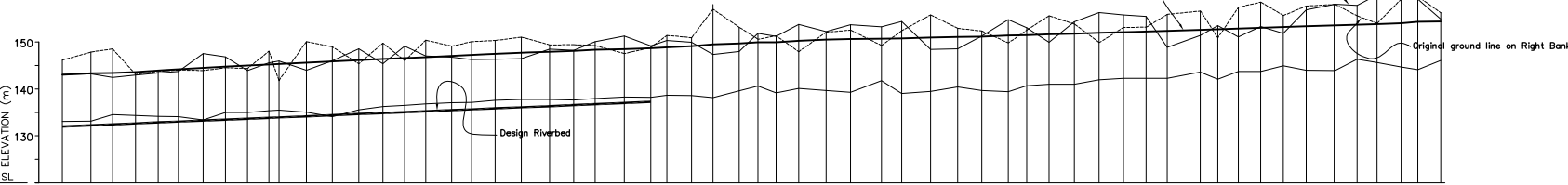
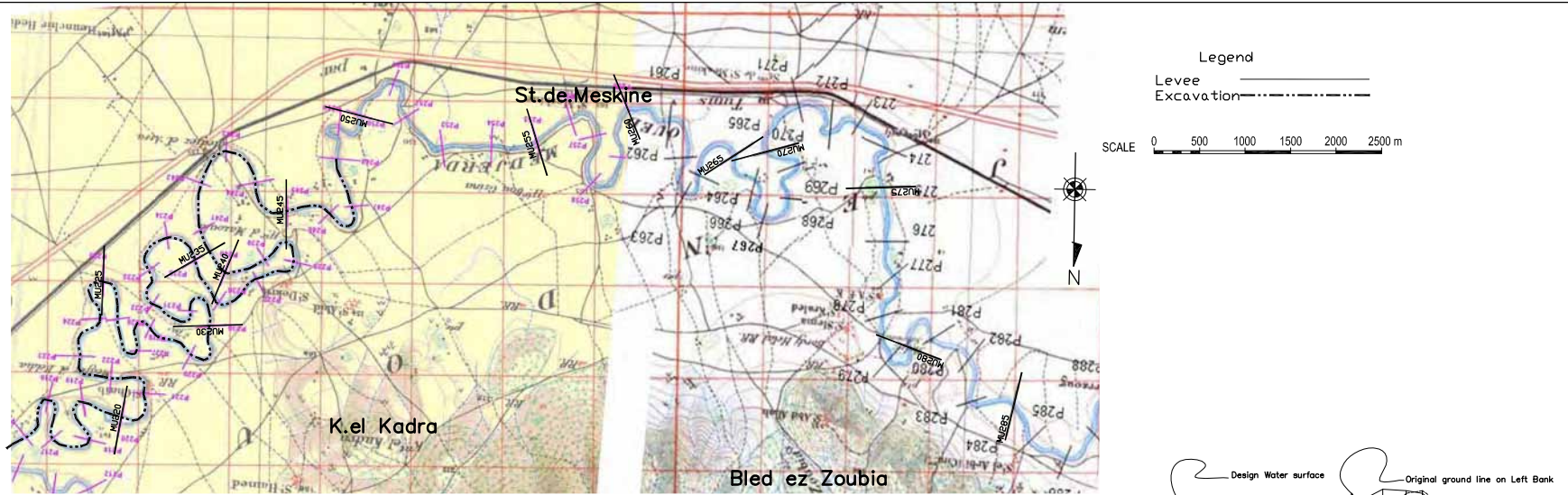
Figure D3.6.2 Profile of Mejerda River Upstream Reach (3/6)

The figure consists of three main parts: a plan view map at the top, an elevation profile in the middle, and a data table at the bottom. The plan view shows the river's path through the Jendouba area, with various zones (U1, U2) and structures like bridges and excavations. The elevation profile shows the design water surface, levee crest, riverbed, and original ground lines on both banks. The data table provides specific elevation and distance data for each station along the reach.

STATION No.	DISTANCE	ACCUMULATIVE DISTANCE	RIGHT BANK GROUND ELEVATION	LEFT BANK GROUND ELEVATION	DESIGN WATER LEVEL	DESIGN CREST ELEVATION	DESIGN SLOPE OF LEVEE CREST	DESIGN RIVERBED ELEVATION	DESIGN SLOPE OF RIVERBED
MU150	532.90	58285.81	132.65	134.04	132.11	132.64	1/5500	122.18	1/3200
MU151	665.22	58953.03	135.18	133.77	124.80	133.71	1/5500	122.39	1/3200
MU152	800.00	59000.00	135.50	133.50	125.00	133.50	1/5500	122.50	1/3200
MU153	935.00	59045.00	135.80	133.20	125.20	133.20	1/5500	122.70	1/3200
MU154	1070.00	59090.00	136.10	132.90	125.40	132.90	1/5500	122.90	1/3200
MU155	1205.00	59135.00	136.40	132.60	125.60	132.60	1/5500	123.10	1/3200
MU156	1340.00	59180.00	136.70	132.30	125.80	132.30	1/5500	123.30	1/3200
MU157	1475.00	59225.00	137.00	132.00	126.00	132.00	1/5500	123.50	1/3200
MU158	1610.00	59270.00	137.30	131.70	126.20	131.70	1/5500	123.70	1/3200
MU159	1745.00	59315.00	137.60	131.40	126.40	131.40	1/5500	123.90	1/3200
MU160	1880.00	59360.00	137.90	131.10	126.60	131.10	1/5500	124.10	1/3200
MU161	2015.00	59405.00	138.20	130.80	126.80	130.80	1/5500	124.30	1/3200
MU162	2150.00	59450.00	138.50	130.50	127.00	130.50	1/5500	124.50	1/3200
MU163	2285.00	59495.00	138.80	130.20	127.20	130.20	1/5500	124.70	1/3200
MU164	2420.00	59540.00	139.10	129.90	127.40	129.90	1/5500	124.90	1/3200
MU165	2555.00	59585.00	139.40	129.60	127.60	129.60	1/5500	125.10	1/3200
MU166	2690.00	59630.00	139.70	129.30	127.80	129.30	1/5500	125.30	1/3200
MU167	2825.00	59675.00	140.00	129.00	128.00	129.00	1/5500	125.50	1/3200
MU168	2960.00	59720.00	140.30	128.70	128.20	128.70	1/5500	125.70	1/3200
MU169	3095.00	59765.00	140.60	128.40	128.40	128.40	1/5500	125.90	1/3200
MU170	3230.00	59810.00	140.90	128.10	128.60	128.10	1/5500	126.10	1/3200
MU171	3365.00	59855.00	141.20	127.80	128.80	127.80	1/5500	126.30	1/3200
MU172	3500.00	59900.00	141.50	127.50	129.00	127.50	1/5500	126.50	1/3200
MU173	3635.00	59945.00	141.80	127.20	129.20	127.20	1/5500	126.70	1/3200
MU174	3770.00	59990.00	142.10	126.90	129.40	126.90	1/5500	126.90	1/3200
MU175	3905.00	60035.00	142.40	126.60	129.60	126.60	1/5500	127.10	1/3200
MU176	4040.00	60080.00	142.70	126.30	129.80	126.30	1/5500	127.30	1/3200
MU177	4175.00	60125.00	143.00	126.00	130.00	126.00	1/5500	127.50	1/3200
MU178	4310.00	60170.00	143.30	125.70	130.20	125.70	1/5500	127.70	1/3200
MU179	4445.00	60215.00	143.60	125.40	130.40	125.40	1/5500	127.90	1/3200
MU180	4580.00	60260.00	143.90	125.10	130.60	125.10	1/5500	128.10	1/3200
MU181	4715.00	60305.00	144.20	124.80	130.80	124.80	1/5500	128.30	1/3200
MU182	4850.00	60350.00	144.50	124.50	131.00	124.50	1/5500	128.50	1/3200
MU183	4985.00	60395.00	144.80	124.20	131.20	124.20	1/5500	128.70	1/3200
MU184	5120.00	60440.00	145.10	123.90	131.40	123.90	1/5500	128.90	1/3200
MU185	5255.00	60485.00	145.40	123.60	131.60	123.60	1/5500	129.10	1/3200
MU186	5390.00	60530.00	145.70	123.30	131.80	123.30	1/5500	129.30	1/3200
MU187	5525.00	60575.00	146.00	123.00	132.00	123.00	1/5500	129.50	1/3200
MU188	5660.00	60620.00	146.30	122.70	132.20	122.70	1/5500	129.70	1/3200
MU189	5795.00	60665.00	146.60	122.40	132.40	122.40	1/5500	129.90	1/3200
MU190	5930.00	60710.00	146.90	122.10	132.60	122.10	1/5500	130.10	1/3200
MU191	6065.00	60755.00	147.20	121.80	132.80	121.80	1/5500	130.30	1/3200
MU192	6200.00	60800.00	147.50	121.50	133.00	121.50	1/5500	130.50	1/3200
MU193	6335.00	60845.00	147.80	121.20	133.20	121.20	1/5500	130.70	1/3200
MU194	6470.00	60890.00	148.10	120.90	133.40	120.90	1/5500	130.90	1/3200
MU195	6605.00	60935.00	148.40	120.60	133.60	120.60	1/5500	131.10	1/3200
MU196	6740.00	60980.00	148.70	120.30	133.80	120.30	1/5500	131.30	1/3200
MU197	6875.00	61025.00	149.00	120.00	134.00	120.00	1/5500	131.50	1/3200
MU198	7010.00	61070.00	149.30	119.70	134.20	119.70	1/5500	131.70	1/3200
MU199	7145.00	61115.00	149.60	119.40	134.40	119.40	1/5500	131.90	1/3200
MU200	7280.00	61160.00	149.90	119.10	134.60	119.10	1/5500	132.10	1/3200
MU201	7415.00	61205.00	150.20	118.80	134.80	118.80	1/5500	132.30	1/3200
MU202	7550.00	61250.00	150.50	118.50	135.00	118.50	1/5500	132.50	1/3200
MU203	7685.00	61295.00	150.80	118.20	135.20	118.20	1/5500	132.70	1/3200
MU204	7820.00	61340.00	151.10	117.90	135.40	117.90	1/5500	132.90	1/3200
MU205	7955.00	61385.00	151.40	117.60	135.60	117.60	1/5500	133.10	1/3200
MU206	8090.00	61430.00	151.70	117.30	135.80	117.30	1/5500	133.30	1/3200
MU207	8225.00	61475.00	152.00	117.00	136.00	117.00	1/5500	133.50	1/3200
MU208	8360.00	61520.00	152.30	116.70	136.20	116.70	1/5500	133.70	1/3200
MU209	8495.00	61565.00	152.60	116.40	136.40	116.40	1/5500	133.90	1/3200
MU210	8630.00	61610.00	152.90	116.10	136.60	116.10	1/5500	134.10	1/3200
MU211	8765.00	61655.00	153.20	115.80	136.80	115.80	1/5500	134.30	1/3200
MU212	8900.00	61700.00	153.50	115.50	137.00	115.50	1/5500	134.50	1/3200
MU213	9035.00	61745.00	153.80	115.20	137.20	115.20	1/5500	134.70	1/3200
MU214	9170.00	61790.00	154.10	114.90	137.40	114.90	1/5500	134.90	1/3200
MU215	9305.00	61835.00	154.40	114.60	137.60	114.60	1/5500	135.10	1/3200
MU216	9440.00	61880.00	154.70	114.30	137.80	114.30	1/5500	135.30	1/3200
MU217	9575.00	61925.00	155.00	114.00	138.00	114.00	1/5500	135.50	1/3200
MU218	9710.00	61970.00	155.30	113.70	138.20	113.70	1/5500	135.70	1/3200
MU219	9845.00	62015.00	155.60	113.40	138.40	113.40	1/5500	135.90	1/3200
MU220	9980.00	62060.00	155.90	113.10	138.60	113.10	1/5500	136.10	1/3200
MU221	10115.00	62105.00	156.20	112.80	138.80	112.80	1/5500	136.30	1/3200
MU222	10250.00	62150.00	156.50	112.50	139.00	112.50	1/5500	136.50	1/3200
MU223	10385.00	62195.00	156.80	112.20	139.20	112.20	1/5500	136.70	1/3200

Figure D3.6.2 Profile of Mejerda River Upstream Reach (3/6)

REPUBLIC OF TUNISIA MINISTRY OF AGRICULTURE AND WATER RESOURCES DEPARTMENT OF DAMS AND LARGE HYDRAULIC WORKS		JAPAN INTERNATIONAL COOPERATION AGENCY
THE STUDY ON INTEGRATED BASIN MANAGEMENT FOCUSED ON FLOOD CONTROL IN MEJERDA RIVER		
DRAWING TITLE	MEJERDA RIVER UPSTREAM REACH PLAN AND PROFILE (3/6)	SHEET NO. E-10
NIPPON KOEI Co., Ltd.		



STATION No.	DISTANCE	ACCUMULATIVE DISTANCE	RIGHT BANK GROUND ELEVATION	LEFT BANK GROUND ELEVATION	ORIGINAL RIVERBED ELEVATION	DESIGN WATER LEVEL	DESIGN CREST ELEVATION	DESIGN SLOPE OF LEVEE CREST	DESIGN RIVERBED ELEVATION
MU230	461.85	87159.76	146.14	143.11	133.04	143.03			132.00
MU231	469.48	87769.24	147.87	143.24	133.14	143.34			132.25
MU232	461.44	88330.68	148.55	142.47	134.54	143.41			132.44
MU233	494.50	88725.18	143.12	142.99	134.31	143.62			132.65
MU234	477.05	89202.23	143.76	143.42	134.12	143.97			132.85
MU235	434.74	89636.97	144.06	143.72	134.05	144.17			133.03
MU236	324.22	90161.19	143.93	147.55	133.36	144.52			133.25
MU237	481.78	90642.97	144.53	146.87	135.00	144.77			133.45
MU238	464.53	91107.50	144.37	143.90	134.96	145.04			133.64
MU239	451.24	91568.74	145.63	145.37	135.84	145.25			133.84
MU240	211.48	91780.22	141.79	145.37	135.38	145.35			133.82
MU241	384.64	92164.86	130.09	144.00	135.01	145.63			134.17
MU242	553.43	92718.29	149.01	146.02	134.11	145.83			134.40
MU243	567.02	93285.31	145.36	148.56	135.53	146.12			134.63
MU244	515.56	93790.87	149.78	145.37	136.25	146.38			134.85
MU245	467.04	94257.91	149.15	136.48	146.60	146.61			135.04
MU246	458.66	94716.57	149.25	130.09	137.06	147.07			135.23
MU247	458.66	95175.23	149.25	130.09	137.06	147.07			135.46
MU248	426.23	95601.46	130.08	146.68	137.12	147.26			135.64
MU249	497.57	96098.03	130.34	146.37	137.56	147.47			135.84
MU250	564.26	96662.29	151.06	146.49	137.74	147.72			136.08
MU251	608.29	97270.58	149.40	148.47	137.76	147.93			136.33
MU252	518.93	97799.51	148.83	149.21	138.21	148.71			136.54
MU253	458.66	98258.17	149.25	130.09	137.98	148.37			136.73
MU254	624.02	98882.19	147.55	151.28	138.28	148.52			136.99
MU255	563.07	99445.26	148.83	149.21	138.21	148.71			137.23
MU256	342.88	100008.23	151.44	150.26	138.66	148.87			
MU257	528.67	100536.90	149.99	138.61	149.13				
MU258	458.69	101045.59	157.04	147.34	138.15	149.50			
MU259	399.76	101545.35	153.14	148.02	139.58	149.73			
MU260	399.76	102045.11	150.61	151.85	140.61	149.93			
MU261	387.77	102532.88	151.37	151.25	139.19	149.96			
MU262	484.07	103016.95	147.95	153.76	140.09	150.27			
MU263	584.41	103601.36	152.13	152.25	139.64	150.51			
MU264	524.64	104125.99	152.35	153.72	139.27	150.69			
MU265	657.77	104783.76	149.26	153.28	141.75	150.74			
MU266	433.31	105217.07	152.44	154.40	139.82	150.79			
MU267	611.57	105828.64	153.82	148.46	139.48	150.96			
MU268	388.59	106217.23	152.92	148.53	140.42	151.08			
MU269	515.82	106733.05	152.37	151.31	139.66	151.19			
MU270	564.64	107297.69	149.81	154.78	139.40	151.40			
MU271	479.41	107777.10	152.57	153.06	140.69	151.49			
MU272	540.42	108327.52	153.83	154.37	141.00	151.82			
MU273	326.27	108853.79	149.90	156.28	141.95	152.01			
MU274	447.09	109380.88	152.14	152.25	142.25	152.14			
MU275	482.22	109862.97	153.18	155.47	142.25	152.27			
MU276	447.09	110310.06	155.92	148.91	142.26	152.42			
MU277	709.89	111019.95	156.65	151.39	143.60	152.57			
MU278	369.59	111389.54	150.91	153.53	142.06	152.74			
MU279	441.00	111830.54	157.44	151.12	143.70	152.90			
MU280	479.20	112309.74	158.53	153.35	143.72	153.04			
MU281	477.90	112788.64	155.68	151.88	144.95	153.20			
MU282	486.69	113275.33	157.69	156.88	143.97	153.38			
MU283	620.17	113905.50	158.04	158.07	143.90	153.56			
MU284	466.45	114475.95	157.01	156.31	146.31	153.73			
MU285	424.39	115000.34	154.02	160.06	145.66	153.86			
MU286	517.97	115518.31	159.18	159.73	144.70	154.04			
MU287	356.99	116055.30	159.72	159.18	144.09	154.32			
MU288	487.96	116543.26	156.22	154.89	146.09	154.44			

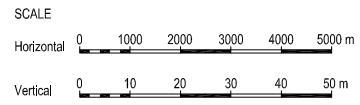
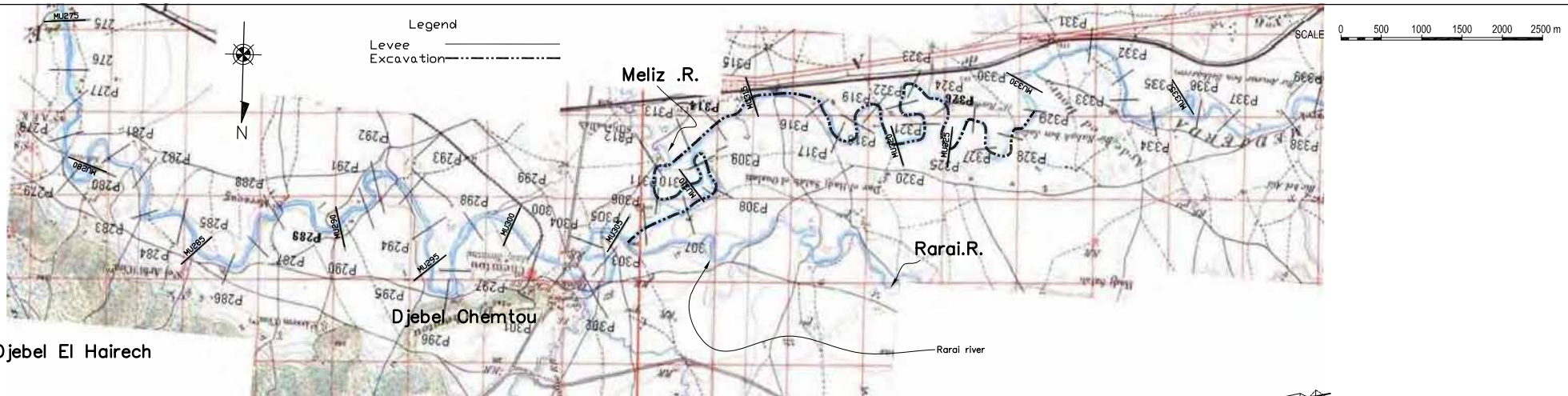
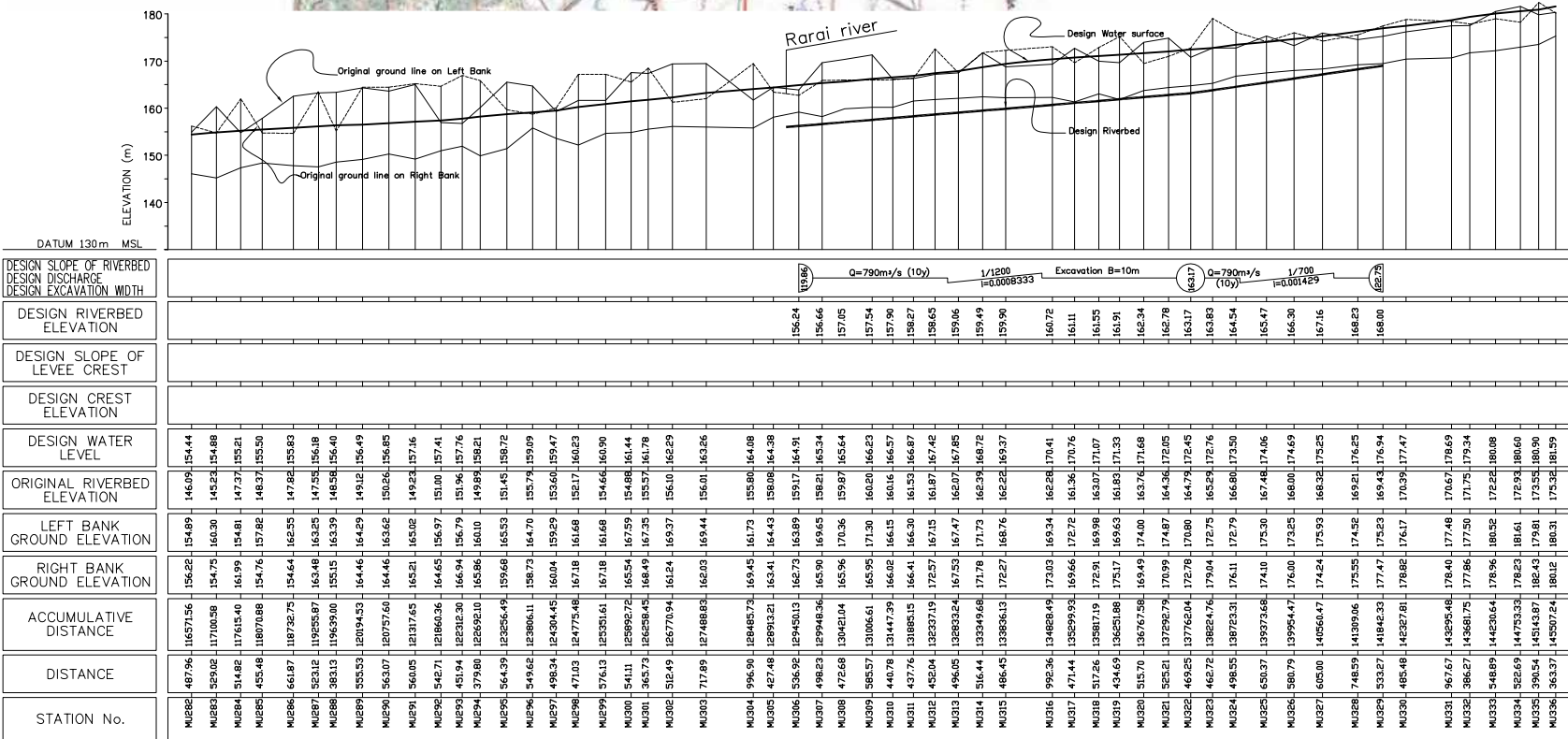


Figure D3.6.2 Profile of Mejerda River Upstream Reach (4/6)

REPUBLIC OF TUNISIA MINISTRY OF AGRICULTURE AND WATER RESOURCES DEPARTMENT OF DAMS AND LARGE HYDRAULIC WORKS		JAPAN INTERNATIONAL COOPERATION AGENCY
THE STUDY ON INTEGRATED BASIN MANAGEMENT FOCUSED ON FLOOD CONTROL IN MEJERDA RIVER		
DRAWING TITLE	MEJERDA RIVER UPSTREAM REACH PLAN AND PROFILE (4/6)	SHEET NO. E-11
NIPPON KOEI Co., Ltd.		



Djebel El Hairech



STATION No.	DISTANCE	ACCUMULATIVE DISTANCE	RIGHT BANK GROUND ELEVATION	LEFT BANK GROUND ELEVATION	ORIGINAL RIVERBED ELEVATION	DESIGN WATER LEVEL	DESIGN CREST ELEVATION	DESIGN SLOPE OF LEVEE CREST	DESIGN RIVERBED ELEVATION	DESIGN SLOPE OF RIVERBED	DESIGN DISCHARGE	DESIGN EXCAVATION WIDTH
MU282	487.96	116571.56	156.22	154.89	146.09	154.44						
MU283	329.02	117100.58	154.75	160.30	145.23	154.68						
MU284	314.82	117615.40	161.99	154.81	147.37	155.21						
MU285	455.48	118070.88	154.76	157.82	148.37	155.50						
MU286	161.87	118232.75	154.64	162.35	147.82	155.83						
MU287	323.12	119255.87	163.48	163.25	147.55	156.18						
MU288	383.13	119639.00	155.15	163.39	148.58	156.40						
MU289	355.53	120194.53	164.46	164.29	149.12	156.49						
MU290	563.07	120757.60	164.46	163.62	150.26	156.85						
MU291	560.05	121317.65	165.21	165.02	149.23	157.16						
MU292	545.71	121863.36	164.65	156.97	151.00	157.41						
MU293	451.94	122315.30	166.94	156.79	151.96	157.76						
MU294	379.80	122695.10	165.86	160.10	149.89	158.21						
MU295	564.39	123259.49	159.68	165.53	151.45	158.72						
MU296	549.62	123809.11	158.73	164.70	155.79	159.09						
MU297	498.34	124307.45	160.04	159.29	153.60	159.47						
MU298	471.03	124778.48	167.18	161.68	152.17	160.23						
MU299	376.13	125354.61	167.18	161.68	154.66	160.90						
MU300	541.11	125895.72	165.54	167.59	154.88	161.44						
MU301	363.73	126259.45	168.43	167.35	153.57	161.78						
MU302	512.49	126771.94	161.24	169.37	156.10	162.29						
MU303	717.89	127489.83	162.03	169.44	156.01	163.26						
MU304	996.90	128486.73	169.45	161.73	155.80	164.08						
MU305	427.48	128914.21	163.41	164.43	158.08	164.38						
MU306	536.92	129451.13	162.73	163.89	159.17	164.91						
MU307	498.23	129949.36	165.90	169.65	158.21	165.34						
MU308	472.68	130421.04	165.96	170.36	159.87	165.64						
MU309	585.57	131006.61	165.95	171.30	160.20	166.23						
MU310	440.78	131447.39	166.02	166.16	160.16	166.57						
MU311	437.76	131885.15	166.41	166.30	161.53	166.87						
MU312	452.04	132337.19	172.57	167.15	161.87	167.42						
MU313	446.05	132833.24	167.53	167.47	162.07	167.85						
MU314	516.44	133349.68	171.78	171.73	162.39	168.72						
MU315	466.45	133836.13	172.27	168.76	162.22	169.37						
MU316	995.36	134828.49	173.03	169.34	162.26	170.41						
MU317	471.44	135299.93	169.66	172.72	161.36	170.76						
MU318	317.26	135817.19	172.91	169.98	163.07	171.07						
MU319	434.69	136251.88	175.17	169.63	161.83	171.33						
MU320	515.70	136767.58	169.43	174.00	163.76	171.68						
MU321	525.21	137292.79	170.99	174.87	164.36	172.05						
MU322	469.25	137762.04	172.78	170.80	164.79	172.45						
MU323	462.72	138224.76	179.04	172.75	165.29	172.76						
MU324	498.55	138723.31	176.11	172.79	166.80	173.50						
MU325	650.37	139273.68	174.10	175.30	167.48	174.06						
MU326	580.79	139954.47	176.00	173.25	168.00	174.69						
MU327	655.00	140560.47	174.24	173.93	168.32	175.25						
MU328	748.59	141309.06	175.95	174.52	169.21	176.25						
MU329	533.27	141842.33	177.47	175.23	169.43	176.94						
MU330	485.48	142327.81	178.82	176.17	170.39	177.47						
MU331	967.67	143295.48	178.40	177.48	170.67	178.69						
MU332	386.27	143681.75	177.86	177.50	171.75	179.34						
MU333	548.89	144230.64	178.96	180.52	172.22	180.08						
MU334	322.69	144753.33	178.23	181.61	172.93	180.60						
MU335	390.54	145143.87	182.43	179.81	173.55	180.90						
MU336	363.37	145507.24	180.12	180.31	175.32	181.59						

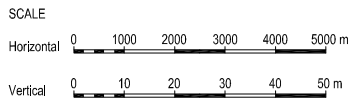


Figure D3.6.2 Profile of Mejerda River Upstream Reach (5/6)

REPUBLIC OF TUNISIA MINISTRY OF AGRICULTURE AND WATER RESOURCES DEPARTMENT OF DAMS AND LARGE HYDRAULIC WORKS		JAPAN INTERNATIONAL COOPERATION AGENCY
THE STUDY ON INTEGRATED BASIN MANAGEMENT FOCUSED ON FLOOD CONTROL IN MEJERDA RIVER		
DRAWING TITLE	MEJERDA RIVER UPSTREAM REACH PLAN AND PROFILE (5/6)	SHEET NO. E-12
NIPPON KOEI Co., Ltd.		

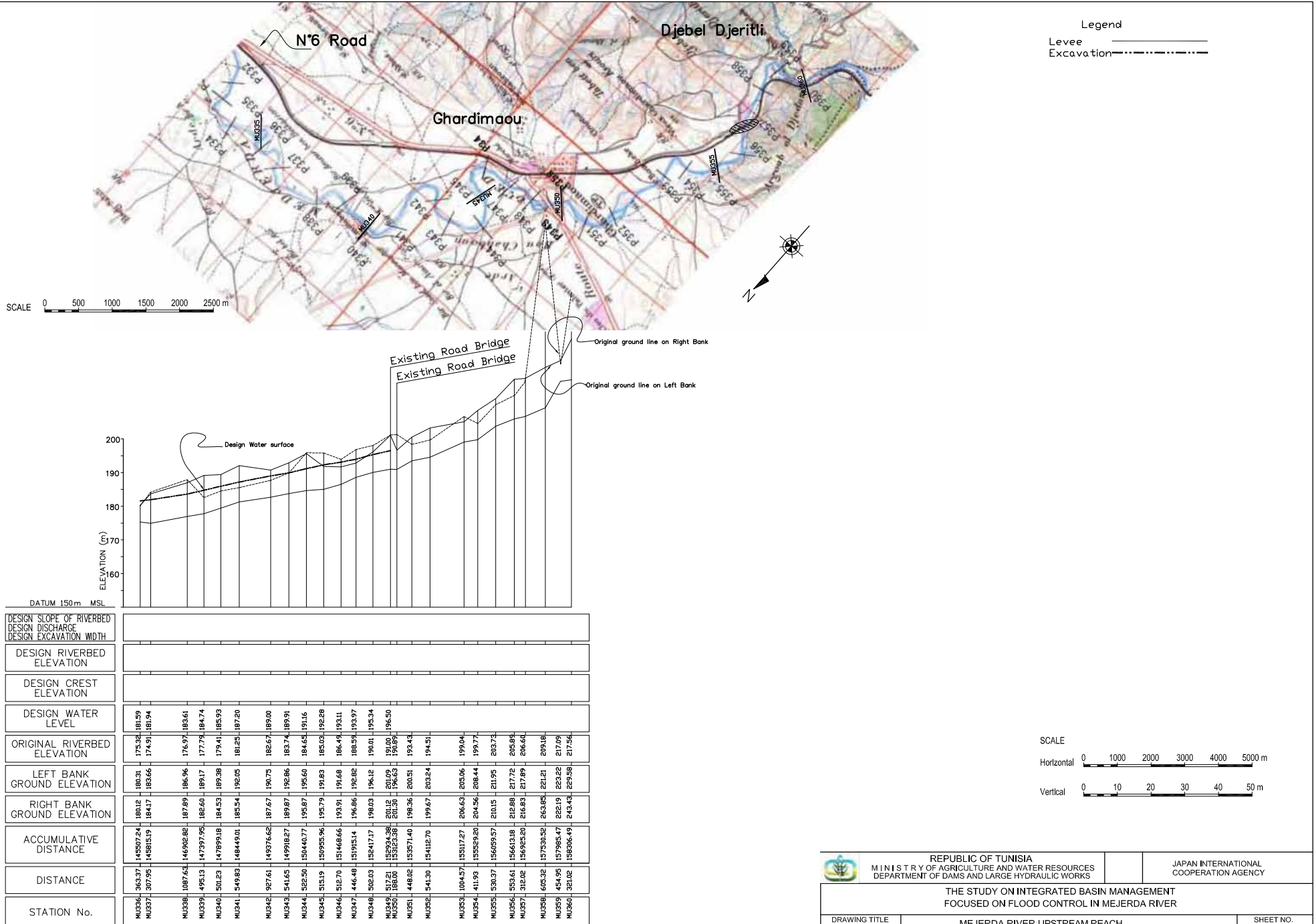
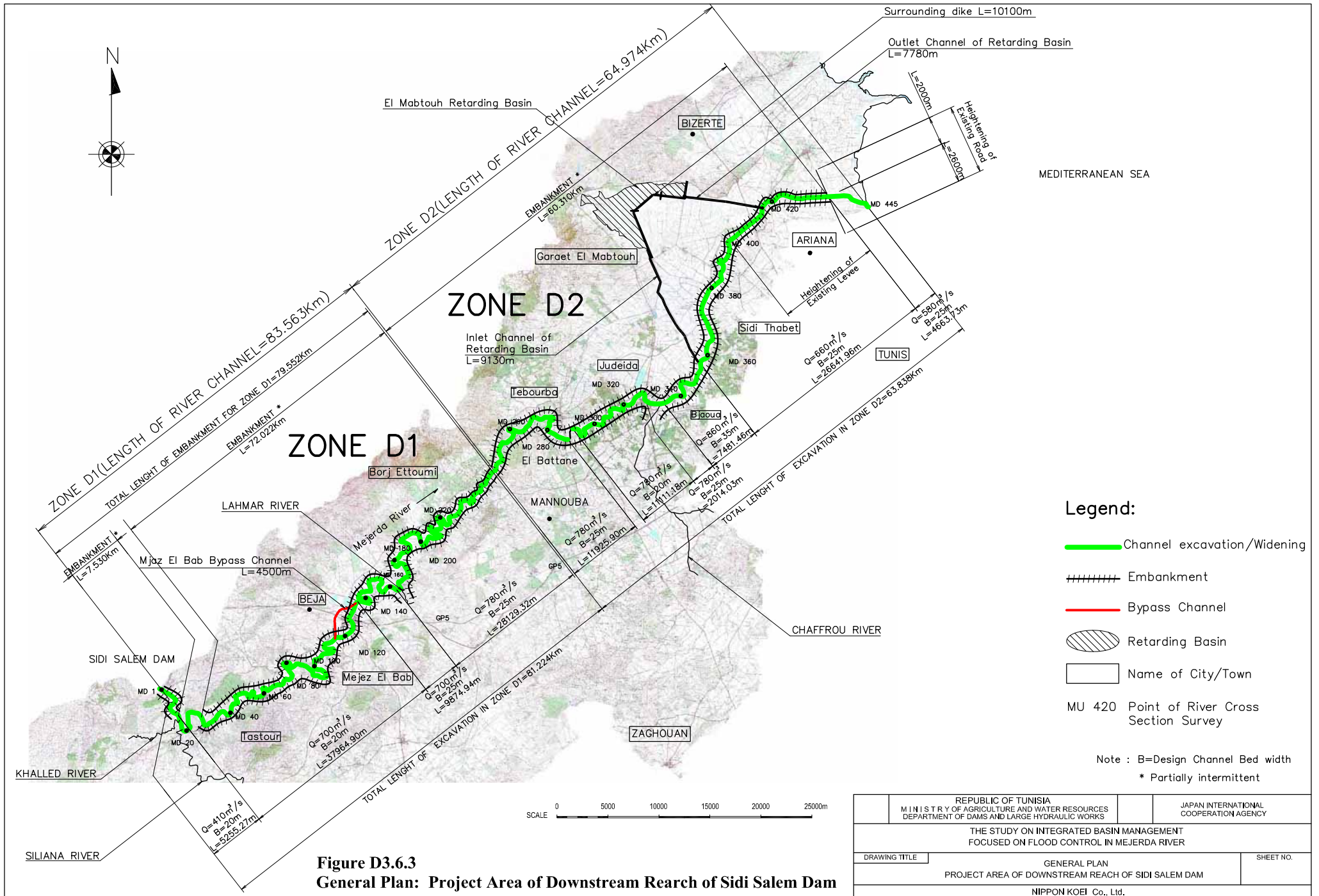


Figure D3.6.2 Profile of Mejerda River Upstream Reach (6/6)

REPUBLIC OF TUNISIA MINISTRY OF AGRICULTURE AND WATER RESOURCES DEPARTMENT OF DAMS AND LARGE HYDRAULIC WORKS		JAPAN INTERNATIONAL COOPERATION AGENCY
THE STUDY ON INTEGRATED BASIN MANAGEMENT FOCUSED ON FLOOD CONTROL IN MEJERDA RIVER		
DRAWING TITLE	MEJERDA RIVER UPSTREAM REACH PLAN AND PROFILE (6/6)	SHEET NO. E-13
NIPPON KOEI Co., Ltd.		



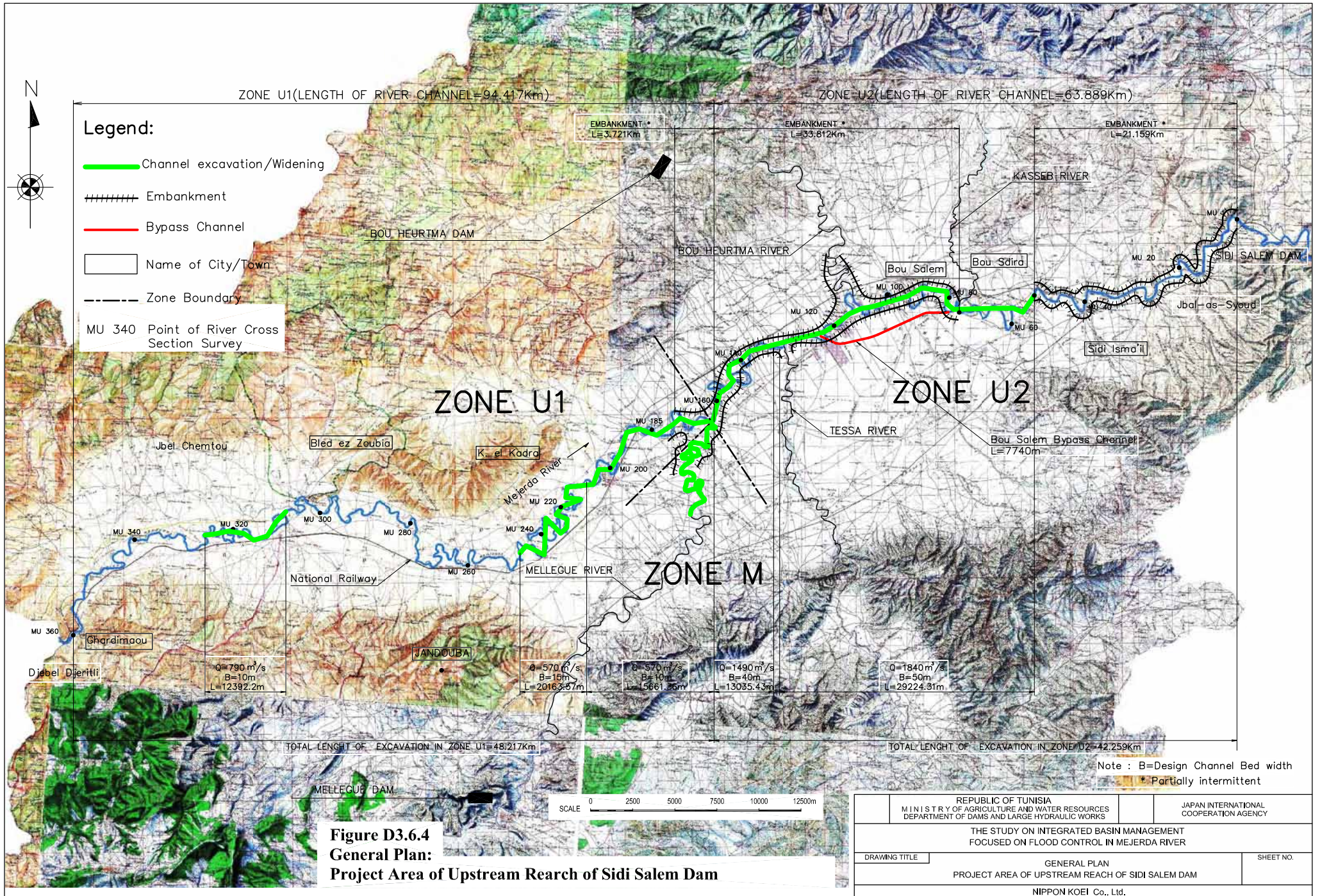


Figure D3.6.4
General Plan:
Project Area of Upstream Reach of Sidi Salem Dam

REPUBLIC OF TUNISIA MINISTRY OF AGRICULTURE AND WATER RESOURCES DEPARTMENT OF DAMS AND LARGE HYDRAULIC WORKS		JAPAN INTERNATIONAL COOPERATION AGENCY
THE STUDY ON INTEGRATED BASIN MANAGEMENT FOCUSED ON FLOOD CONTROL IN MEJERDA RIVER		
DRAWING TITLE	GENERAL PLAN PROJECT AREA OF UPSTREAM REACH OF SIDI SALEM DAM	SHEET NO.
NIPPON KOEI Co., Ltd.		

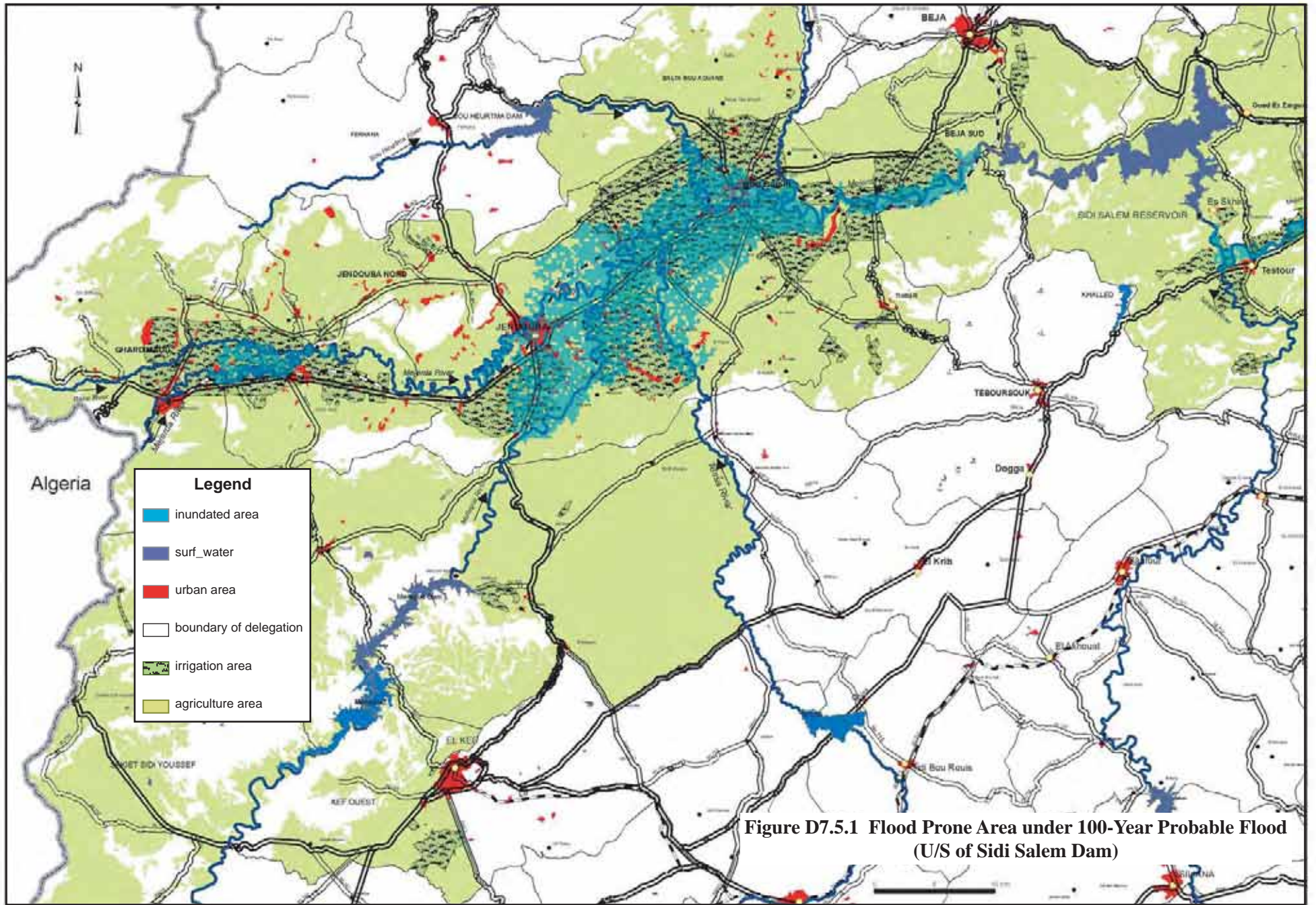


Figure D7.5.1 Flood Prone Area under 100-Year Probable Flood (U/S of Sidi Salem Dam)

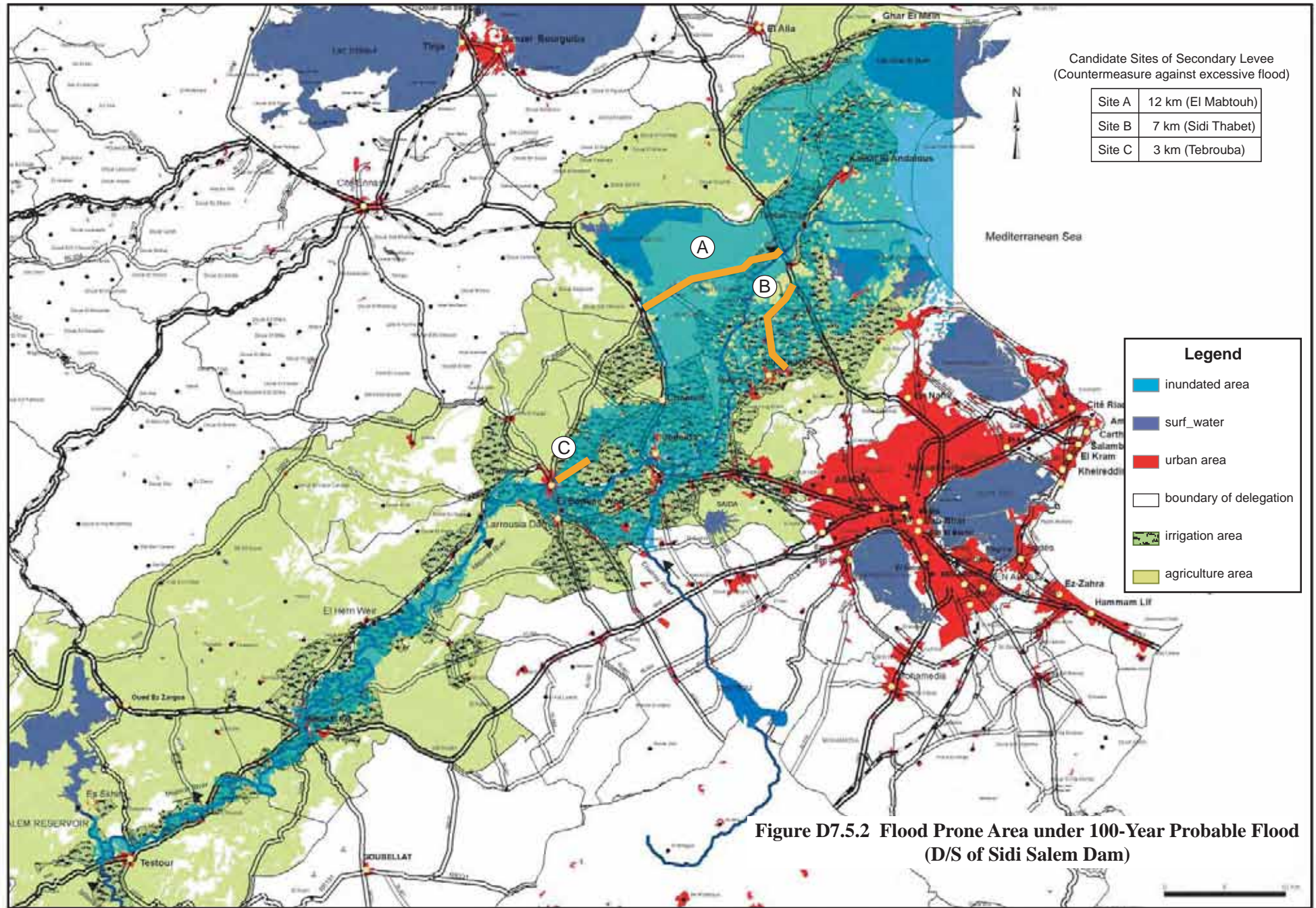


Figure D7.5.2 Flood Prone Area under 100-Year Probable Flood (D/S of Sidi Salem Dam)