

Figure D3.4.1
Division of Zones in Priority at
El Mabtouh Plain



Figure D3.4.2 Present Conditions of Sluiceways along El Mabtouh Canal



Figure D3.4.3 Present Conditions of Sluiceways along El Mabtouh Canal

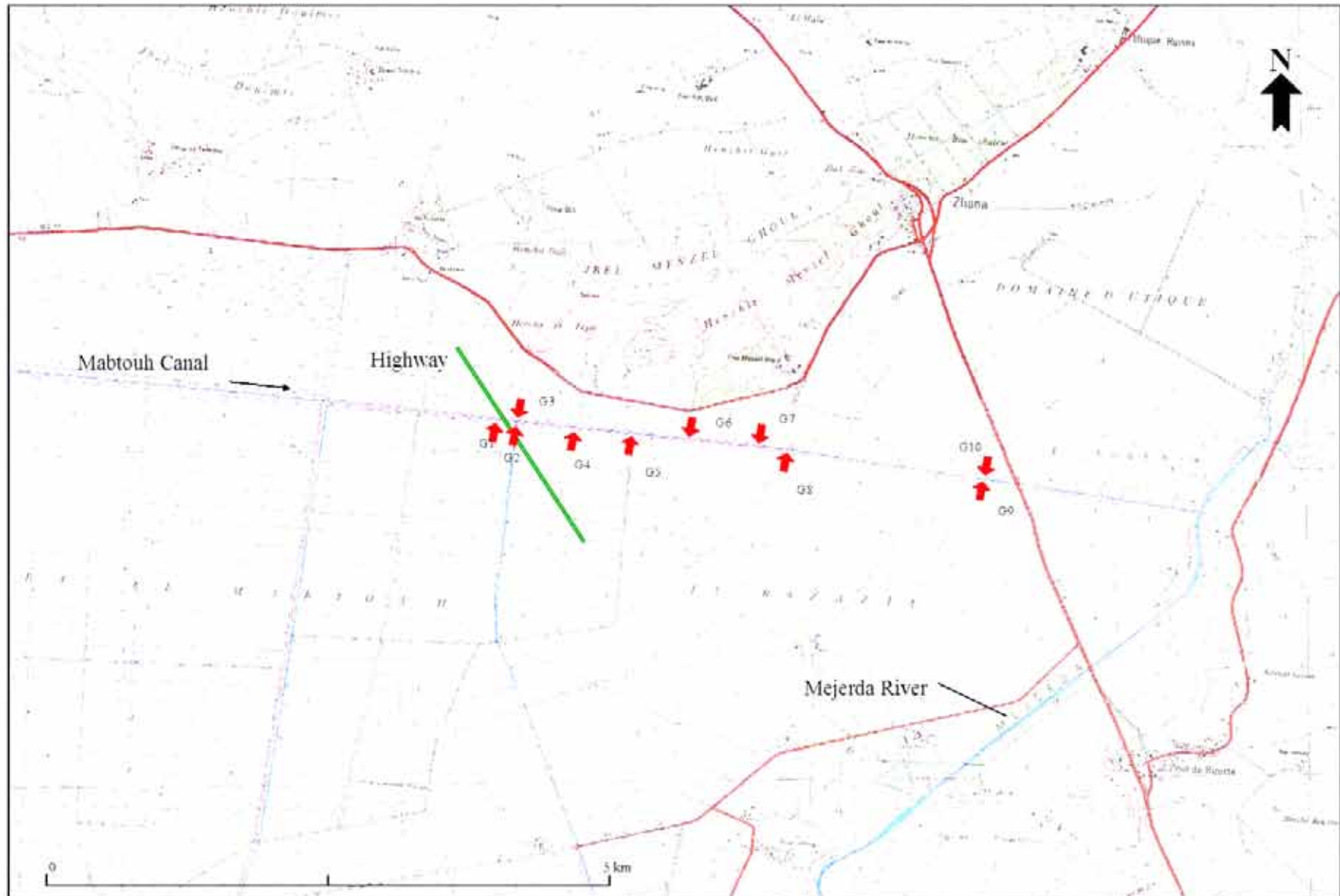


Figure D3.4.4 Location Map of Existing Sluiceways along El Mabtouh Canal

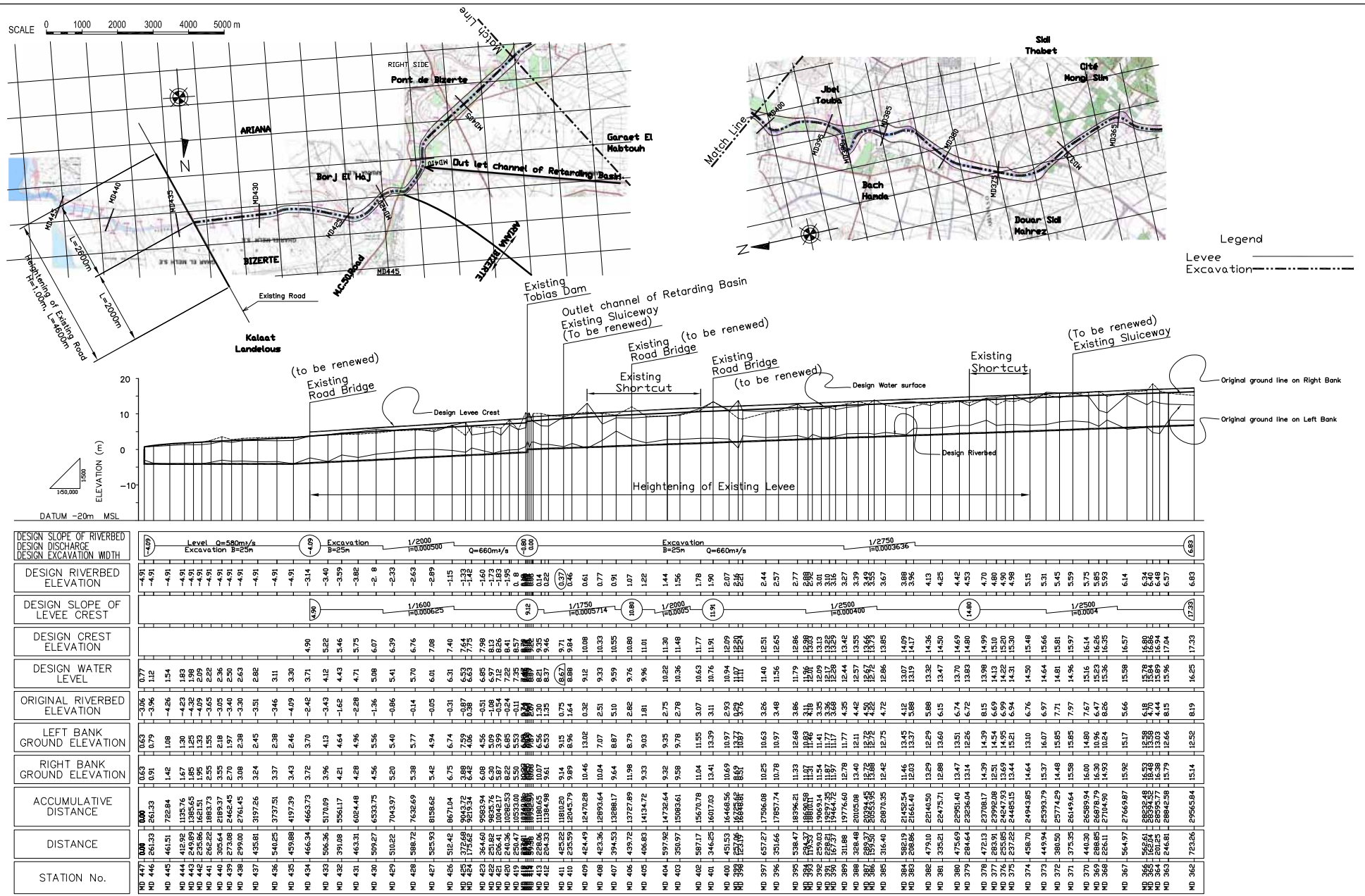
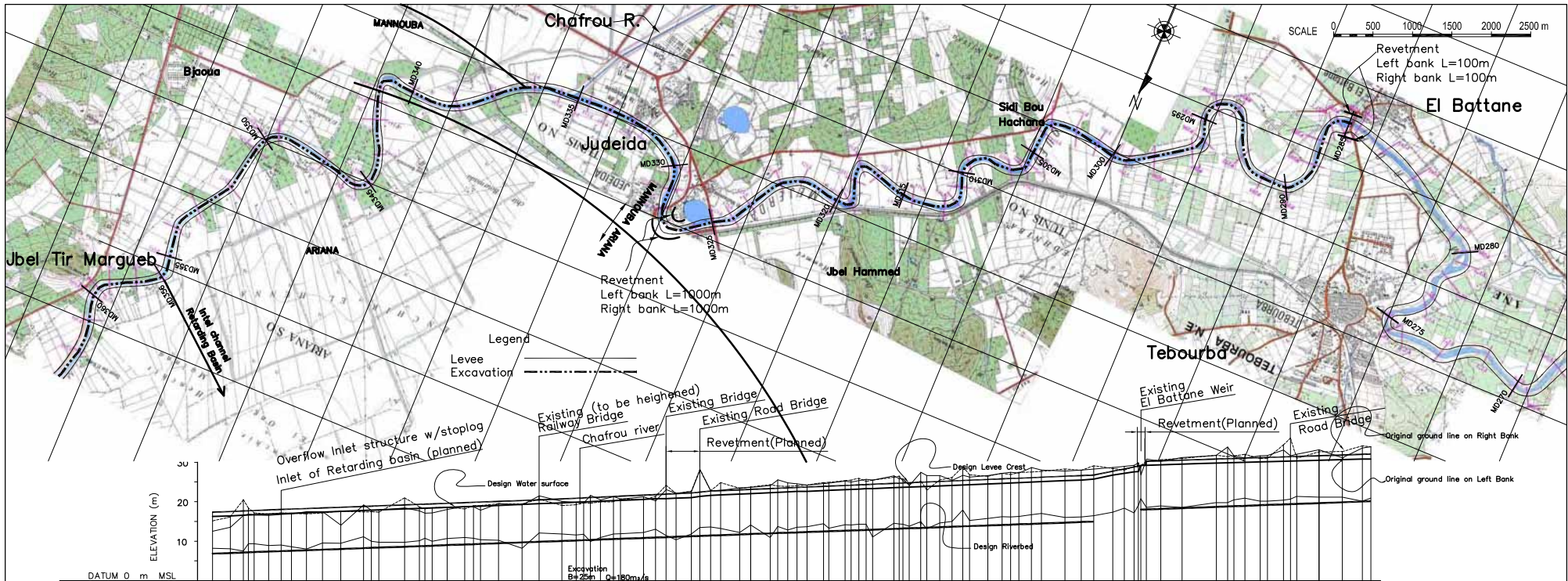


Figure D3.6.1 Profile of Mejerda River Downstream Reach (1/5)



STATION No.	DISTANCE	ACCUMULATIVE DISTANCE	RIGHT BANK GROUND ELEVATION	LEFT BANK GROUND ELEVATION	DESIGN WATER LEVEL	DESIGN CREST ELEVATION	DESIGN SLOPE OF LEVEE CREST	DESIGN RIVERBED ELEVATION	DESIGN SLOPE OF RIVERBED
MD 362	723.26	239565.84	15.14	12.52	16.25	17.33	1/3.50	6.83	1/6.00
MD 361	451.18	300707.02	16.12	13.52	16.42	17.51	1/3.50	6.99	1/6.00
MD 360	333.08	335137.90	16.97	14.37	16.56	17.66	1/3.50	7.12	1/6.00
MD 359	325.70	338387.60	17.07	14.47	16.66	17.76	1/3.50	7.19	1/6.00
MD 357	363.44	309883.54	16.89	16.54	16.80	17.90	1/3.50	7.35	1/6.00
MD 356	317.15	313005.69	17.18	16.75	16.95	18.03	1/3.50	7.46	1/6.00
MD 355	263.41	315669.10	17.07	16.90	17.06	18.13	1/3.50	7.56	1/6.00
MD 354	378.73	319477.83	16.81	17.46	17.19	18.27	1/3.50	7.70	1/6.00
MD 353	406.54	323543.37	17.12	17.46	17.36	18.42	1/3.50	7.84	1/6.00
MD 352	462.66	328177.05	17.64	14.06	17.55	18.59	1/3.50	8.01	1/6.00
MD 351	582.78	333999.83	17.38	11.08	17.79	18.80	1/3.50	8.22	1/6.00
MD 349	186.36	337847.12	17.32	17.82	17.84	18.95	1/3.50	8.36	1/6.00
MD 348	655.53	344339.65	18.69	10.71	18.29	19.33	1/3.50	8.60	1/6.00
MD 347	373.64	348133.28	18.89	17.63	18.41	19.59	1/3.50	8.74	1/6.00
MD 346	373.72	351867.00	18.69	16.77	18.12	19.66	1/3.50	8.86	1/6.00
MD 344	384.39	355202.87	18.61	16.03	18.55	19.59	1/3.50	9.00	1/6.00
MD 343	441.72	359625.99	18.18	18.78	18.75	19.75	1/3.50	9.16	1/6.00
MD 342	181.09	361437.08	18.22	18.74	18.82	19.80	1/3.50	9.20	1/6.00
MD 341	181.09	363248.17	18.22	18.74	18.82	19.80	1/3.50	9.20	1/6.00
MD 340	452.57	368177.51	19.47	19.51	19.05	20.07	1/3.50	9.47	1/6.00
MD 339	602.02	374197.53	19.44	19.19	19.32	20.29	1/3.50	9.69	1/6.00
MD 338	428.67	378481.15	20.65	21.46	19.49	20.45	1/3.50	9.84	1/6.00
MD 337	580.18	384283.33	19.04	20.04	19.72	20.71	1/3.50	10.05	1/6.00
MD 336	358.92	387871.15	19.24	19.79	19.86	20.69	1/3.50	10.18	1/6.00
MD 335	358.92	391460.07	19.24	19.79	19.86	20.69	1/3.50	10.18	1/6.00
MD 334	253.44	394052.51	19.92	20.43	20.12	21.16	1/3.50	10.41	1/6.00
MD 333	378.32	397830.83	19.95	20.26	20.27	21.31	1/3.50	10.53	1/6.00
MD 332	178.68	399609.15	20.73	20.84	20.37	21.33	1/3.50	10.59	1/6.00
MD 330	586.76	405509.29	20.50	21.24	20.61	21.66	1/3.50	10.81	1/6.00
MD 329	300.89	408011.18	21.35	20.20	20.75	21.92	1/3.50	10.92	1/6.00
MD 328	269.86	410711.04	24.15	23.04	20.79	21.92	1/3.50	11.01	1/6.00
MD 327	251.93	413227.97	22.08	22.13	20.88	22.03	1/3.50	11.11	1/6.00
MD 326	396.22	417019.19	22.66	22.52	21.06	22.21	1/3.50	11.25	1/6.00
MD 325	216.87	419208.06	28.20	28.06	21.32	22.42	1/3.50	11.32	1/6.00
MD 324	253.71	421741.77	27.16	27.16	21.46	22.60	1/3.50	11.41	1/6.00
MD 323	253.71	424280.48	27.62	27.62	21.70	22.80	1/3.50	11.52	1/6.00
MD 322	481.86	429338.88	23.40	23.52	21.93	23.00	1/3.50	11.69	1/6.00
MD 321	280.87	432147.75	23.71	23.63	21.11	22.08	1/3.50	11.79	1/6.00
MD 320	494.45	437089.20	24.31	24.05	22.27	23.32	1/3.50	11.97	1/6.00
MD 319	190.21	438989.41	23.84	25.51	22.37	23.40	1/3.50	12.04	1/6.00
MD 318	235.78	441557.17	23.89	24.79	22.47	23.51	1/3.50	12.13	1/6.00
MD 317	250.97	444140.14	24.23	24.19	22.57	23.62	1/3.50	12.21	1/6.00
MD 316	458.26	448680.40	24.86	24.75	22.89	23.81	1/3.50	12.31	1/6.00
MD 315	458.26	453228.66	24.86	24.75	22.89	23.81	1/3.50	12.31	1/6.00
MD 314	156.23	454790.89	25.34	25.19	23.05	24.02	1/3.50	12.46	1/6.00
MD 313	156.23	456353.12	25.34	25.19	23.05	24.02	1/3.50	12.46	1/6.00
MD 312	184.48	458197.60	25.16	25.46	23.19	24.14	1/3.50	12.52	1/6.00
MD 311	184.48	460042.08	25.16	25.46	23.19	24.14	1/3.50	12.52	1/6.00
MD 310	184.48	461886.56	25.16	25.46	23.19	24.14	1/3.50	12.52	1/6.00
MD 309	533.63	468418.19	26.18	26.52	23.58	24.63	1/3.50	13.11	1/6.00
MD 308	533.63	473751.82	26.18	26.52	23.58	24.63	1/3.50	13.11	1/6.00
MD 307	280.87	476555.69	26.18	26.52	23.58	24.63	1/3.50	13.11	1/6.00
MD 306	280.87	479359.56	26.18	26.52	23.58	24.63	1/3.50	13.11	1/6.00
MD 305	280.87	482163.43	26.18	26.52	23.58	24.63	1/3.50	13.11	1/6.00
MD 304	326.41	485029.84	26.14	25.43	24.10	25.25	1/3.50	13.54	1/6.00
MD 303	312.04	487906.88	26.14	25.43	24.10	25.25	1/3.50	13.54	1/6.00
MD 302	173.11	489638.99	26.95	26.93	24.32	25.33	1/3.50	13.65	1/6.00
MD 299	463.57	492271.56	26.44	26.60	24.50	25.62	1/3.50	13.98	1/6.00
MD 298	361.14	495887.75	27.17	27.21	24.64	25.77	1/3.50	14.11	1/6.00
MD 297	209.07	498000.82	27.41	27.23	24.83	25.85	1/3.50	14.27	1/6.00
MD 294	315.92	503341.05	27.49	28.66	24.97	26.08	1/3.50	14.38	1/6.00
MD 293	254.24	505888.29	27.66	28.04	25.10	26.19	1/3.50	14.47	1/6.00
MD 292	594.34	511823.63	28.29	27.77	25.36	26.44	1/3.50	14.69	1/6.00
MD 291	412.96	515955.53	27.95	28.03	25.46	26.61	1/3.50	14.84	1/6.00
MD 290	316.83	519123.36	29.11	28.24	25.71	26.74	1/3.50	14.96	1/6.00
MD 289	485.43	523977.79	28.42	28.67	26.74	27.71	1/3.50	15.13	1/6.00
MD 288	270.69	526684.48	28.91	28.91	27.58	28.29	1/3.50	15.31	1/6.00
MD 287	270.69	529391.17	28.91	28.91	27.58	28.29	1/3.50	15.31	1/6.00
MD 284	134.39	533433.64	30.21	30.82	28.33	30.35	1/3.50	18.18	1/6.00
MD 283	366.97	536912.61	30.62	30.52	28.33	30.35	1/3.50	18.18	1/6.00
MD 282	534.55	541477.16	30.96	31.18	28.50	30.52	1/3.50	18.37	1/6.00
MD 281	862.10	550099.26	31.76	31.68	28.76	30.80	1/3.50	18.69	1/6.00
MD 279	788.92	557988.18	31.40	31.82	28.98	30.89	1/3.50	18.76	1/6.00
MD 278	278.41	557433.99	31.88	31.05	29.95	31.04	1/3.50	18.95	1/6.00
MD 277	384.76	560287.75	30.95	31.65	30.09	31.16	1/3.50	19.09	1/6.00
MD 276	186.17	562171.92	31.01	30.12	30.13	31.22	1/3.50	19.16	1/6.00
MD 275	405.72	567248.69	34.43	31.08	30.26	31.35	1/3.50	19.31	1/6.00
MD 274	163.54	568882.23	30.52	30.52	30.33	31.48	1/3.50	19.33	1/6.00
MD 272	560.52	574821.72	32.82	33.13	30.48	31.64	1/3.50	19.64	1/6.00
MD 271	594.04	580157.76	32.70	31.15	30.65	31.83	1/3.50	19.85	1/6.00
MD 270	289.22	583744.98	33.50	31.60	30.83	32.07	1/3.50	20.04	1/6.00
MD 269	211.19	585366.17	34.30	31.94	30.83	32.07	1/3.50	20.04	1/6.00

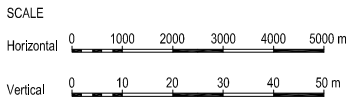


Figure D3.6.1 Profile of Mejerda River Downstream Reach (2/5)

REPUBLIC OF TUNISIA MINISTRY OF AGRICULTURE AND WATER RESOURCES DEPARTMENT OF DAMS AND LARGE HYDRAULIC WORKS		JAPAN INTERNATIONAL COOPERATION AGENCY
THE STUDY ON INTEGRATED BASIN MANAGEMENT FOCUSED ON FLOOD CONTROL IN MEJERDA RIVER		
DRAWING TITLE	MEJERDA RIVER DOWNSTREAM REACH PLAN AND PROFILE (2/5)	SHEET NO. E-4
NIPPON KOEI Co., Ltd.		

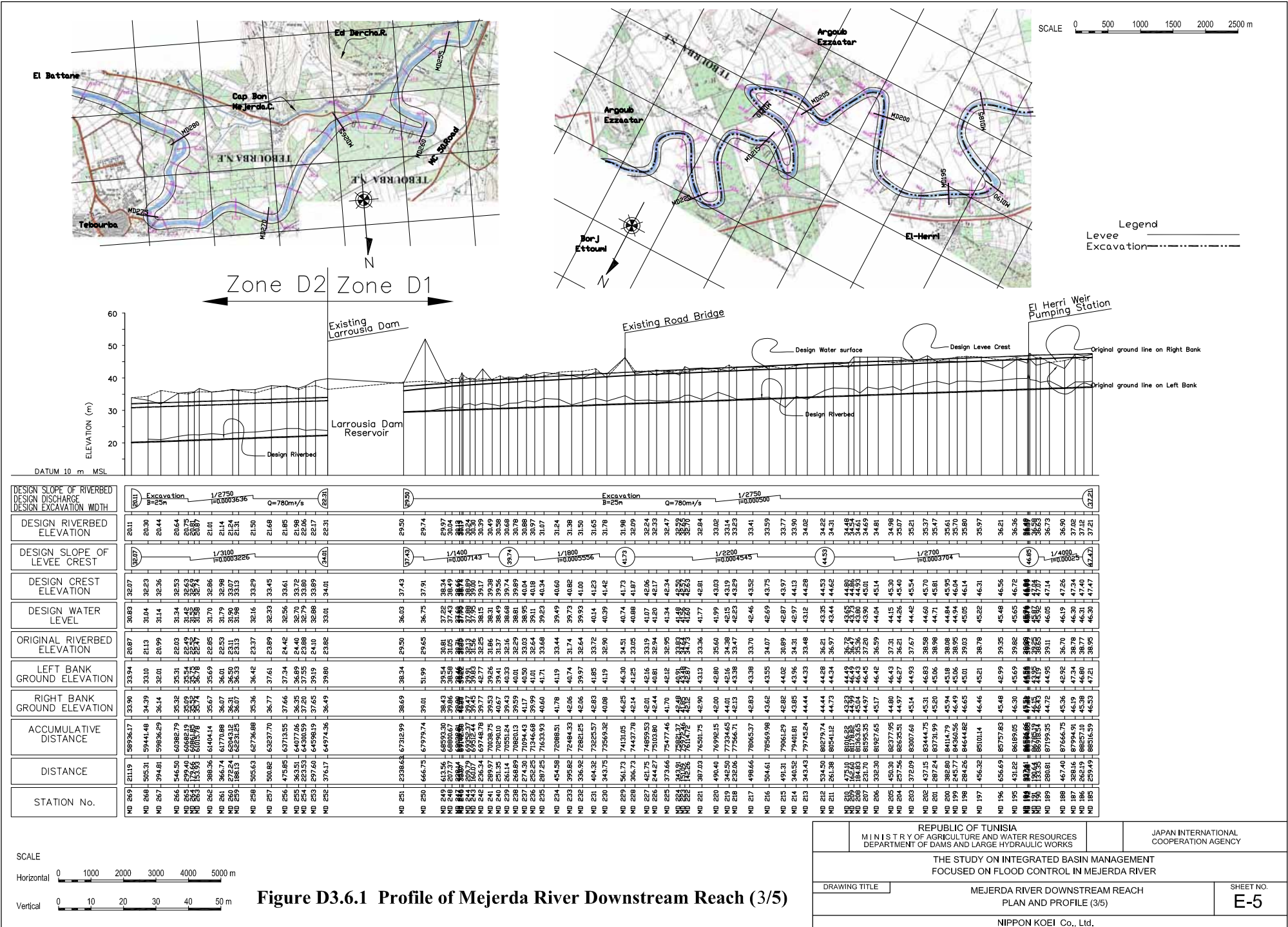


Figure D3.6.1 Profile of Mejerda River Downstream Reach (3/5)

REPUBLIC OF TUNISIA MINISTRY OF AGRICULTURE AND WATER RESOURCES DEPARTMENT OF DAMS AND LARGE HYDRAULIC WORKS		JAPAN INTERNATIONAL COOPERATION AGENCY
THE STUDY ON INTEGRATED BASIN MANAGEMENT FOCUSED ON FLOOD CONTROL IN MEJERDA RIVER		
DRAWING TITLE	MEJERDA RIVER DOWNSTREAM REACH PLAN AND PROFILE (3/5)	SHEET NO. E-5
NIPPON KOEI Co., Ltd.		

