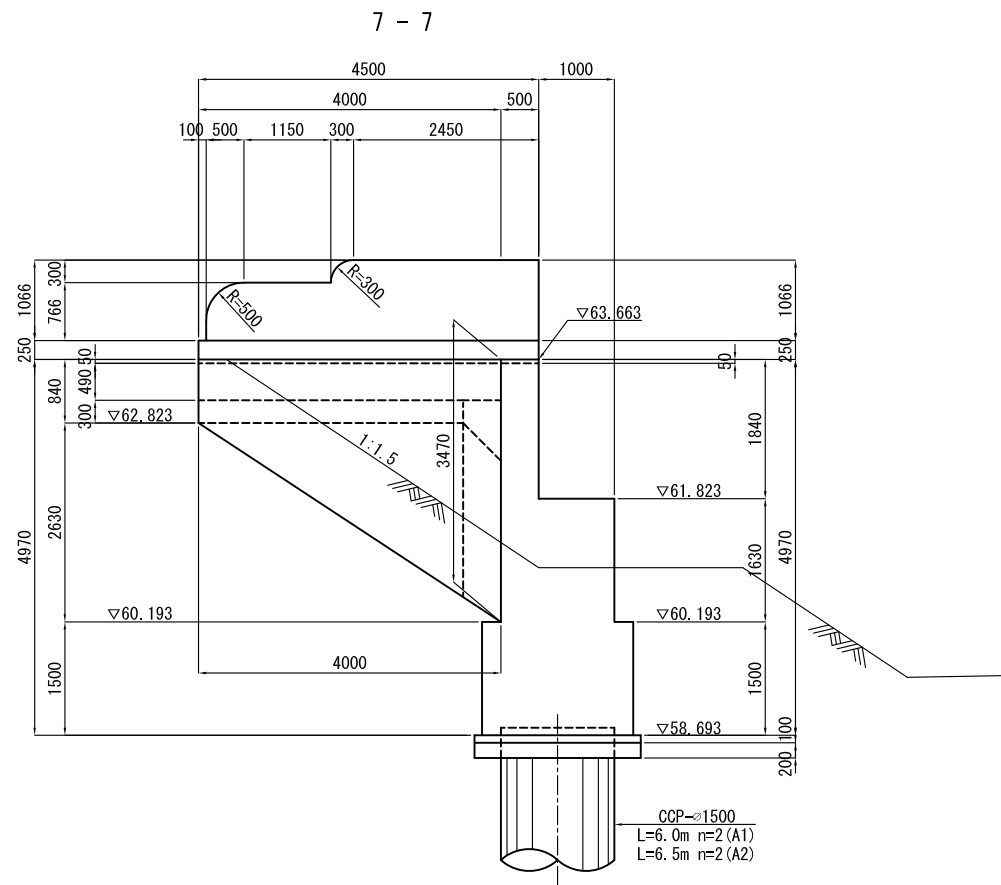
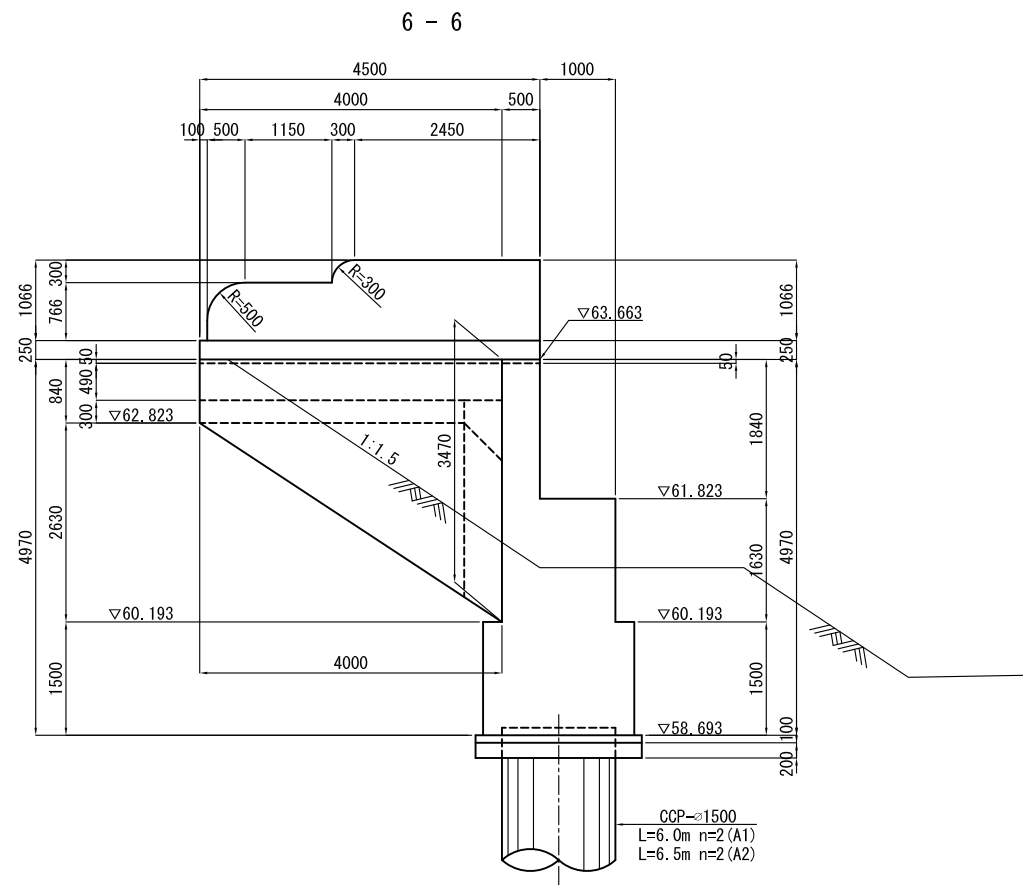
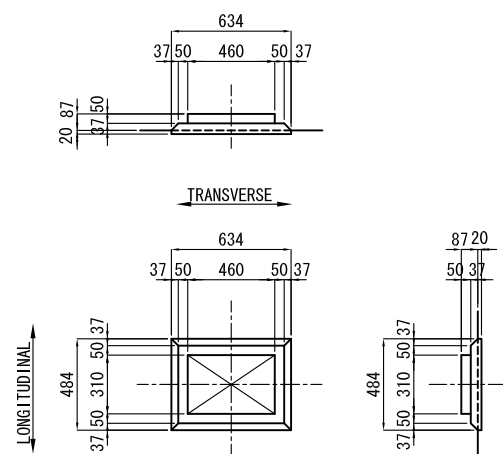


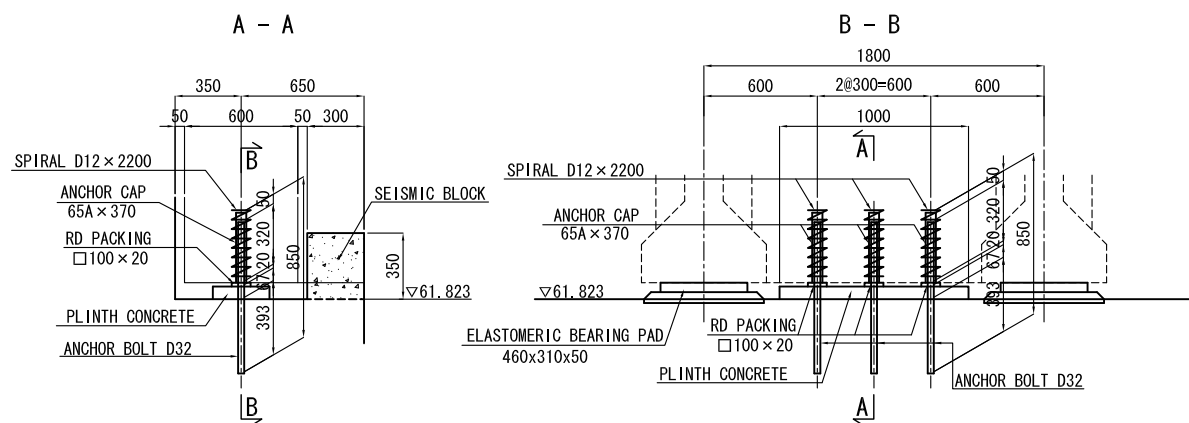
STRUCTURAL DRAWING OF A1, A2 ABUTMENT (2) SCALE 1:50



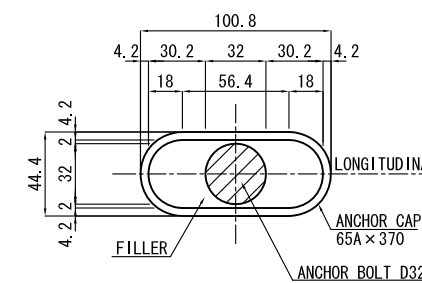
DETAILS SCALE 1:20



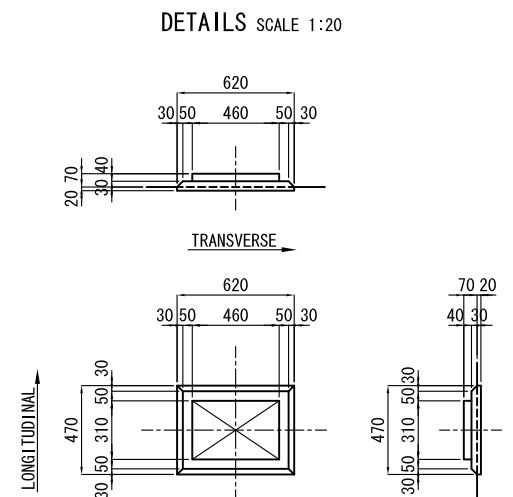
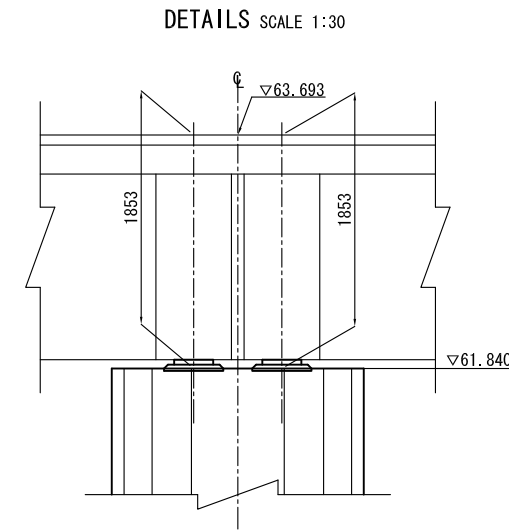
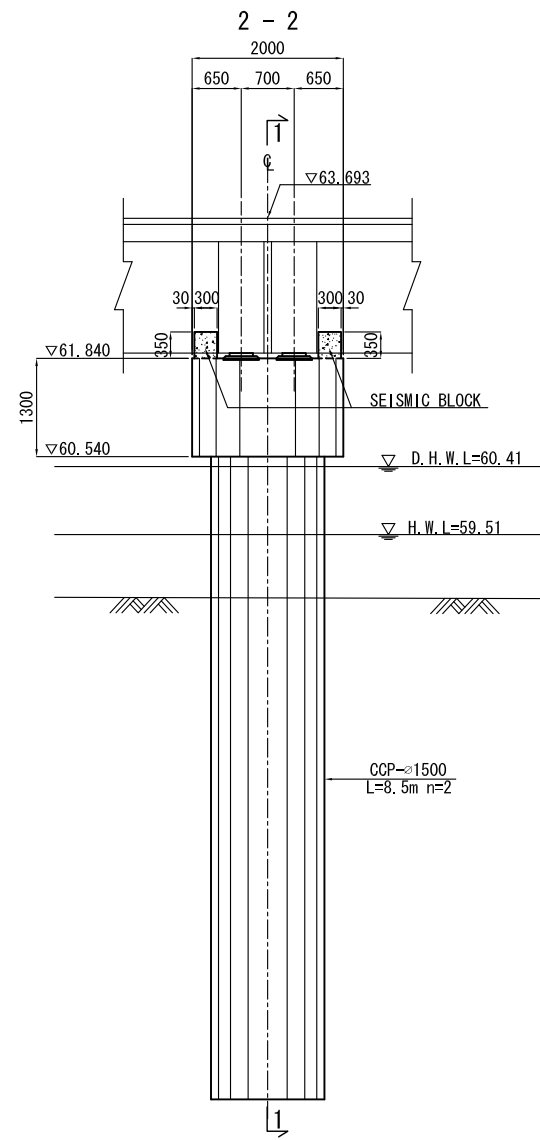
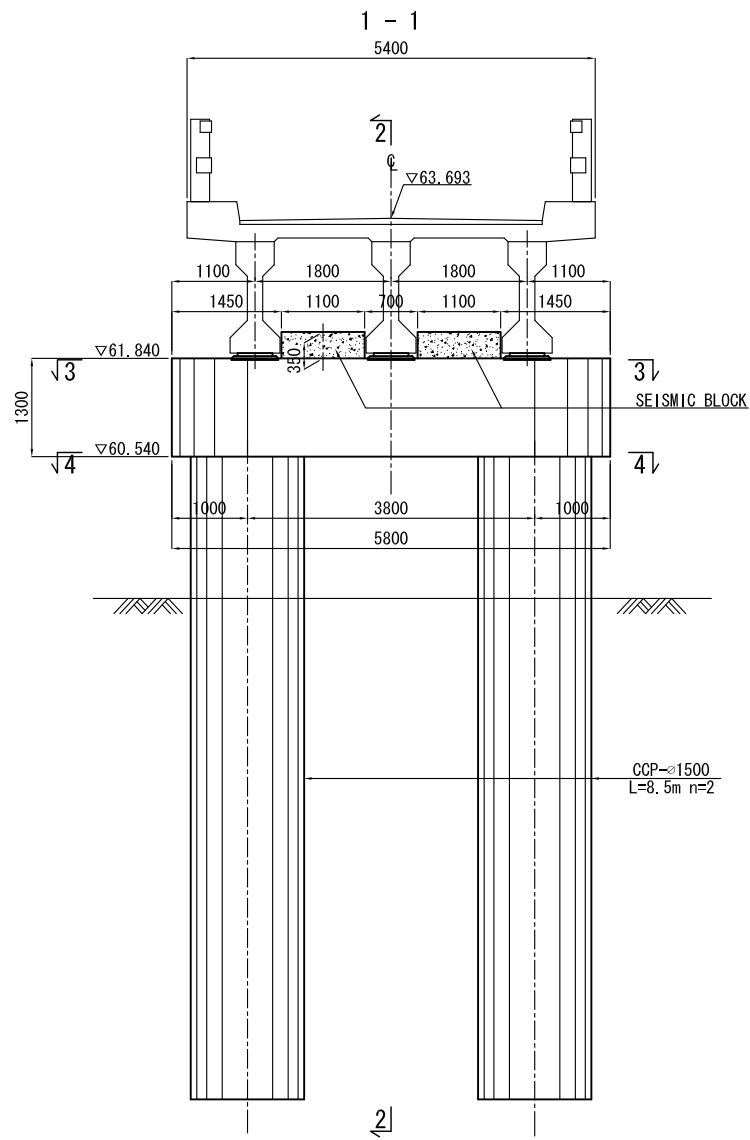
DETAILS SCALE 1:20



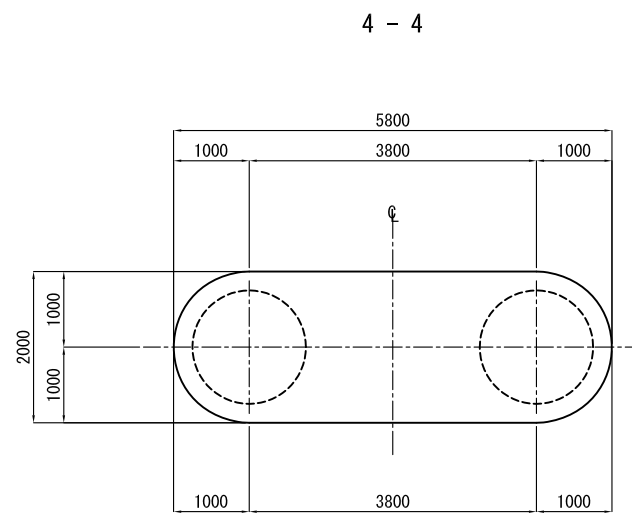
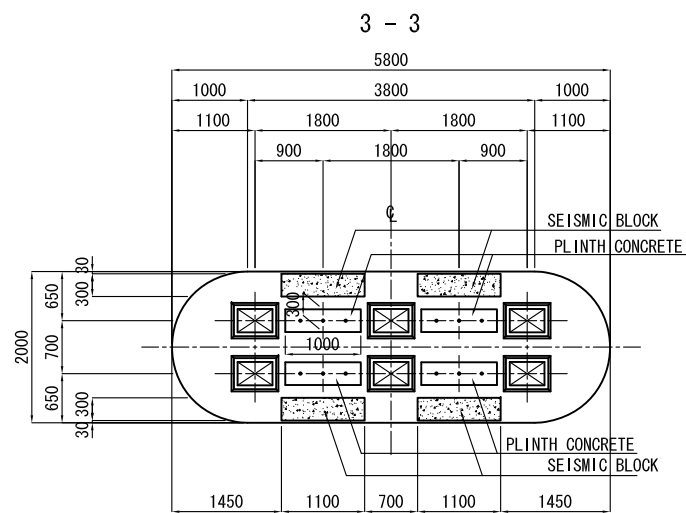
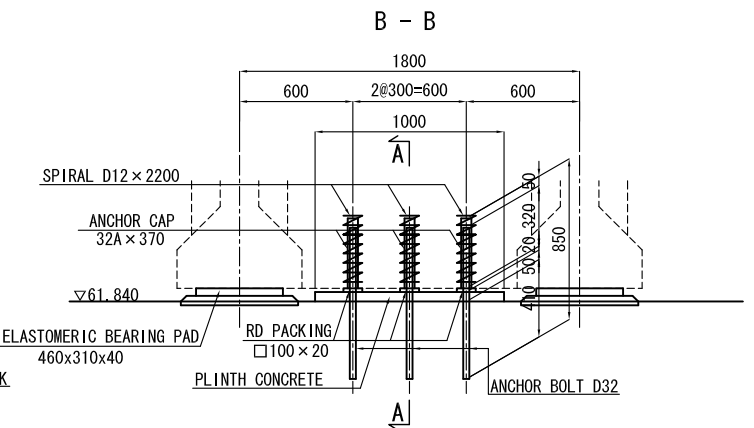
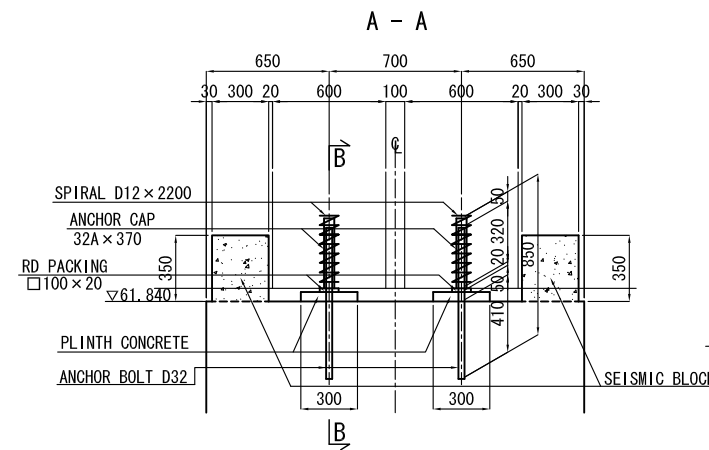
ANCHOR CAP SCALE 1:2  
Movable



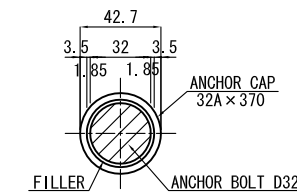
STRUCTURAL DRAWING OF P1~P3 BRIDGE PIER SCALE 1:50

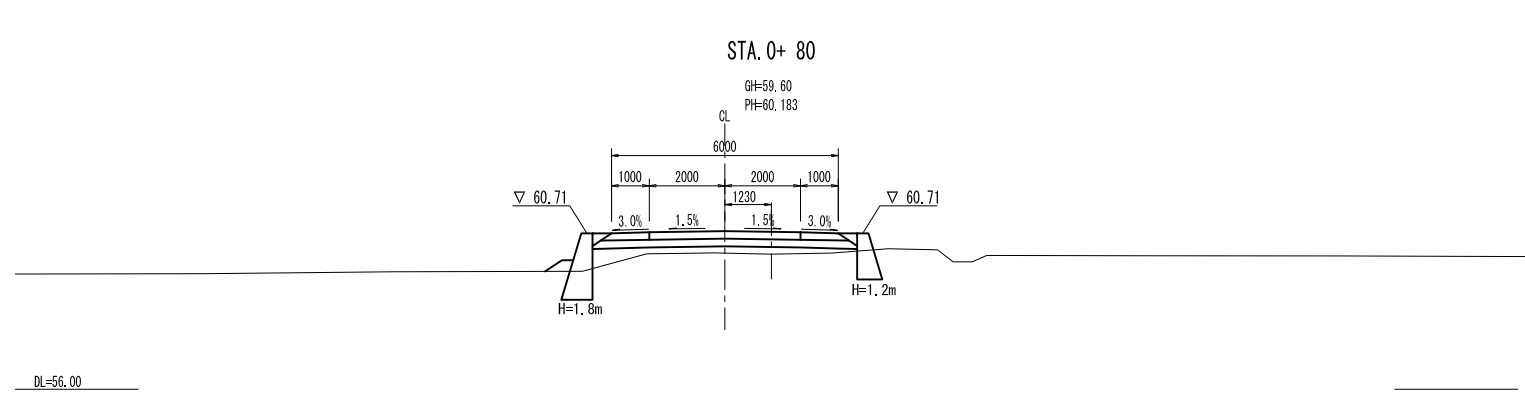
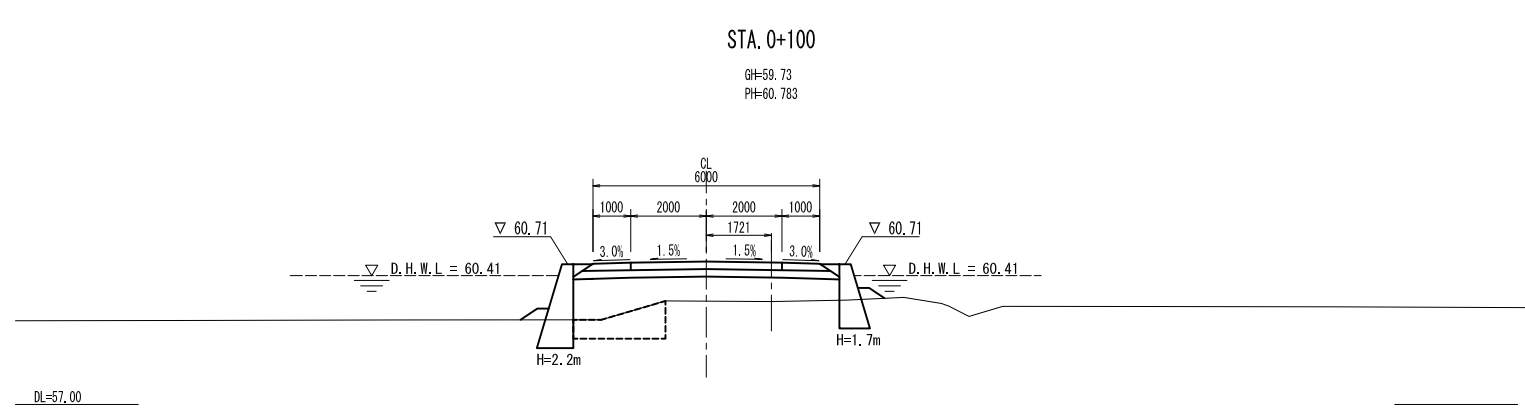
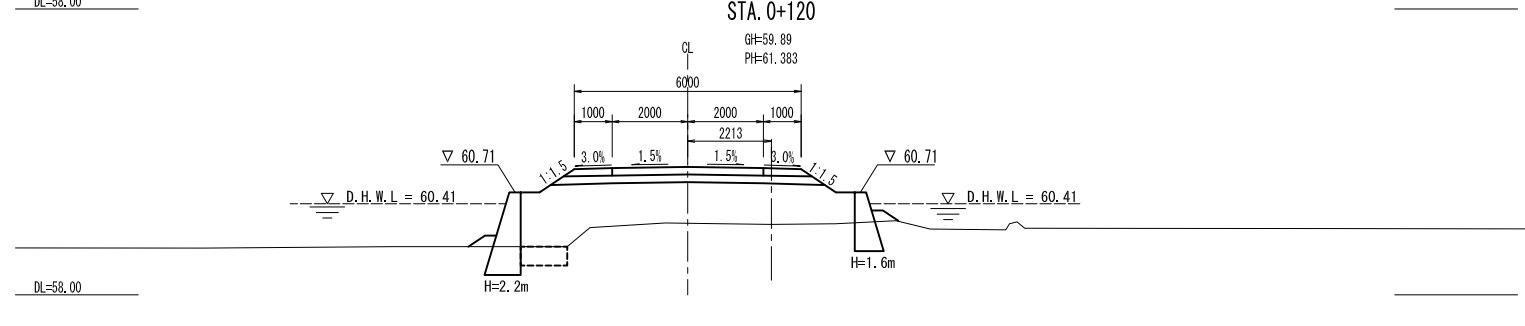
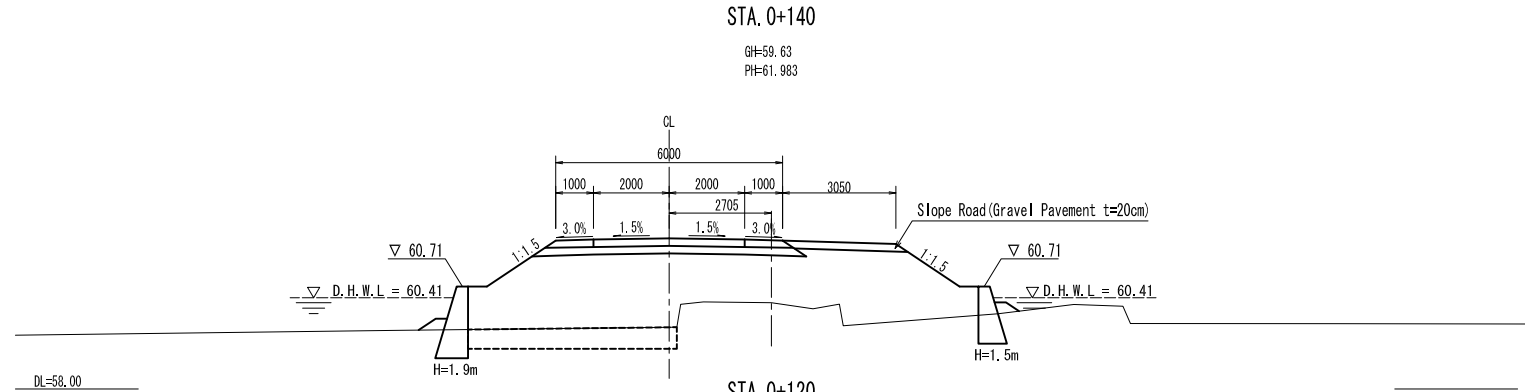
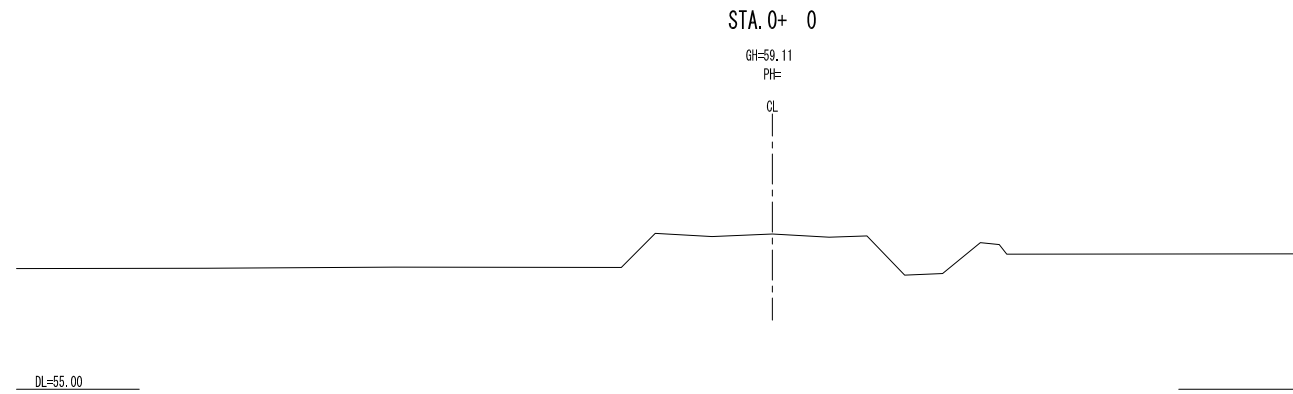
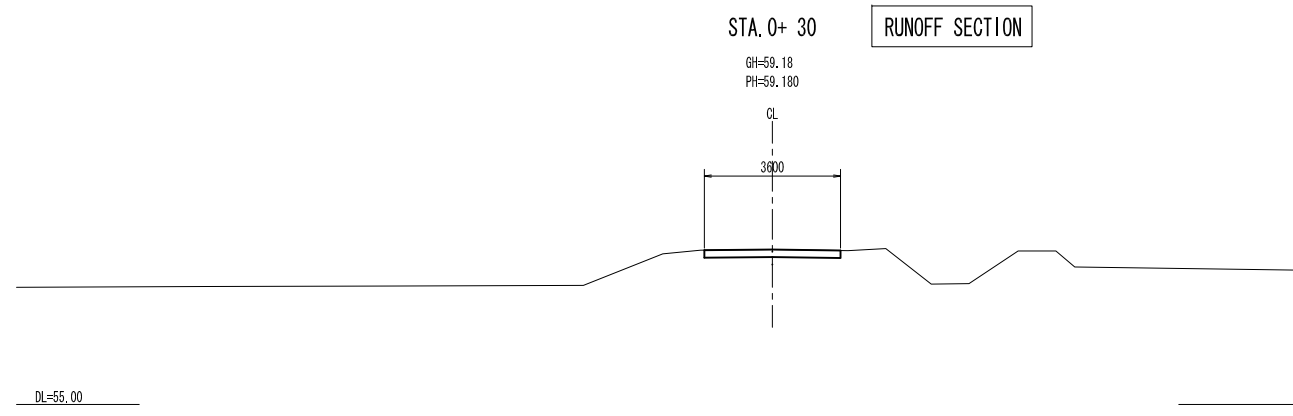
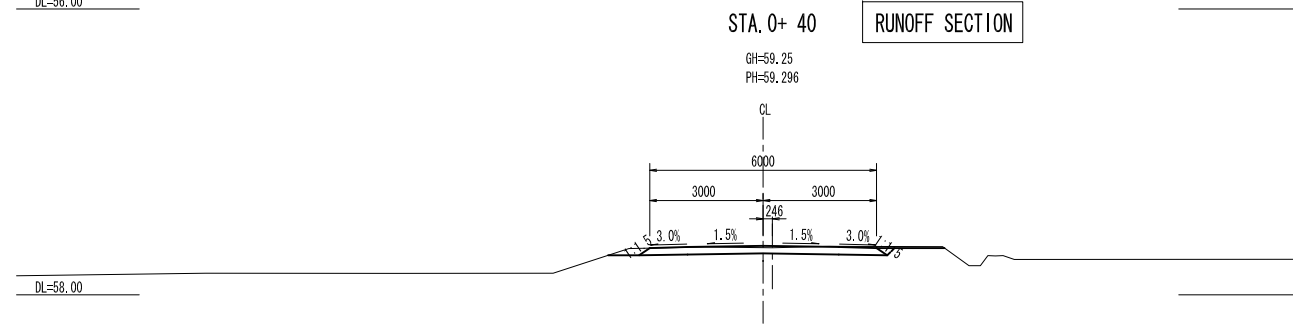
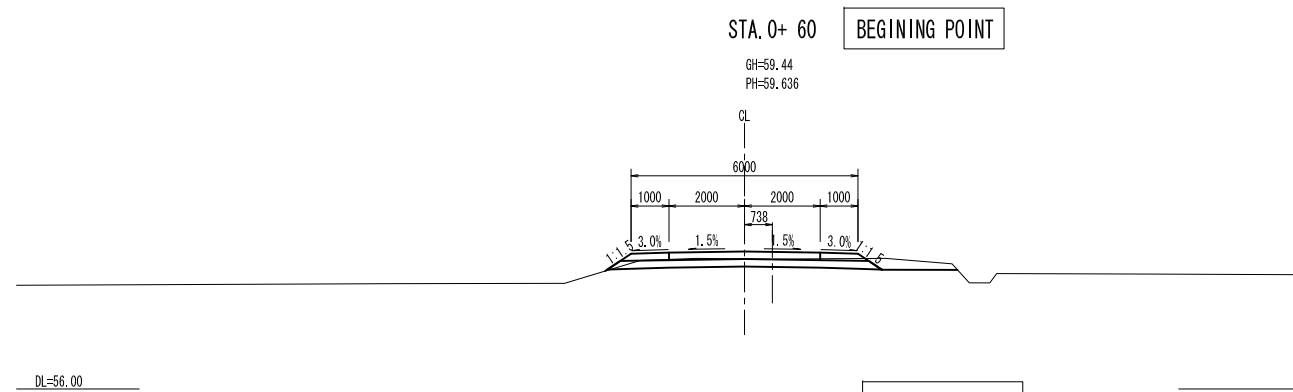


DETAILS SCALE 1:20

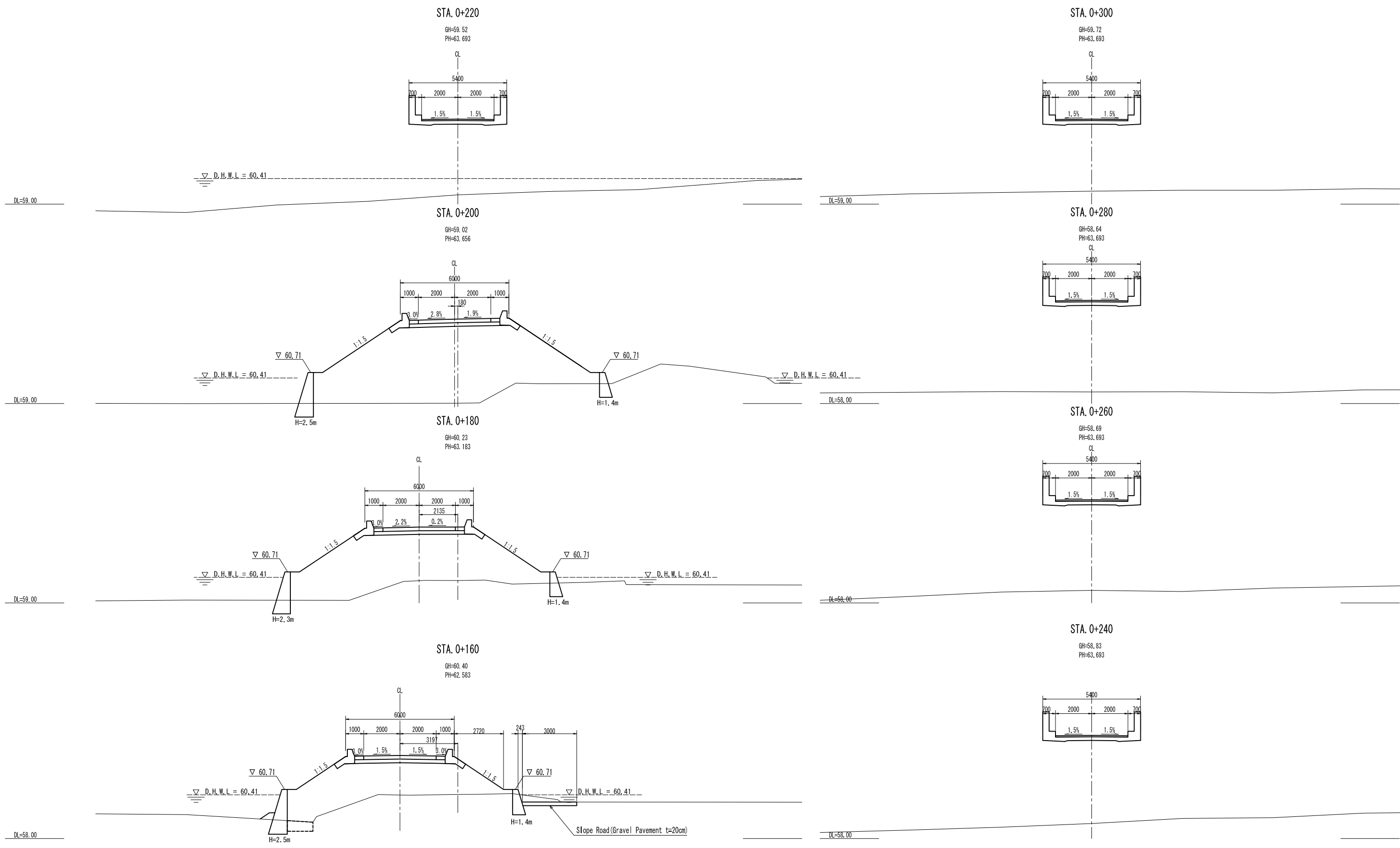


ANCHOR CAP SCALE 1:2  
Fix

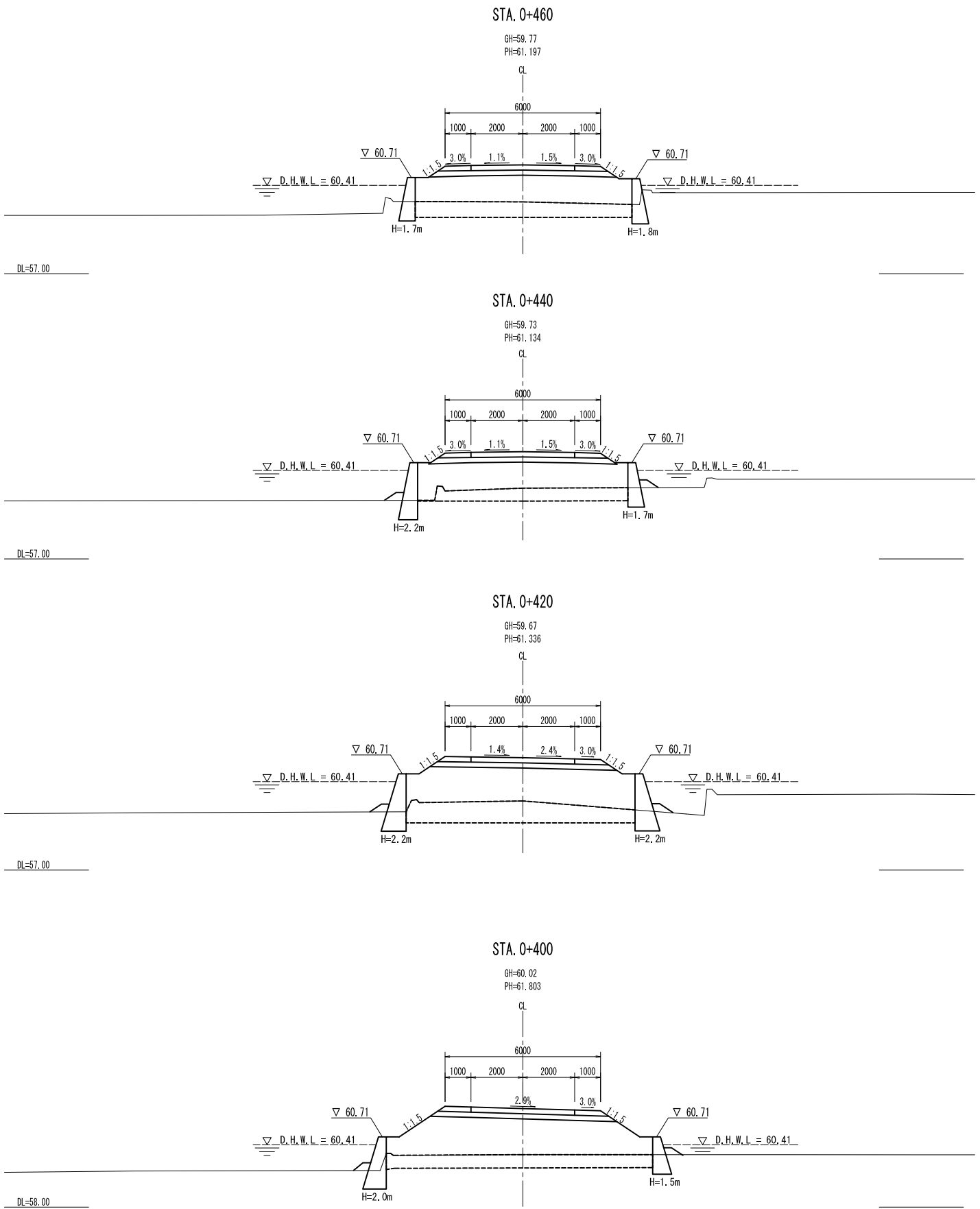
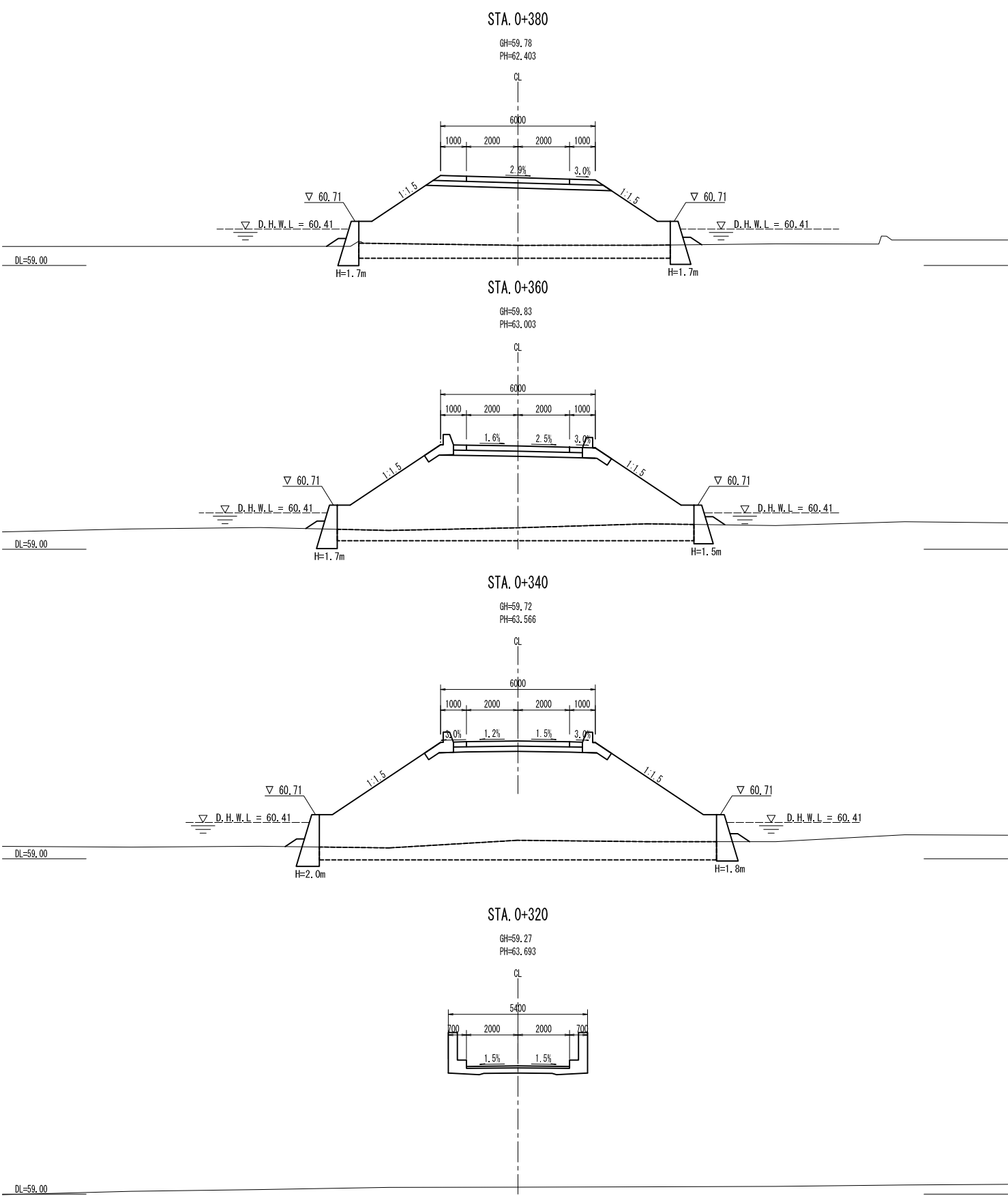




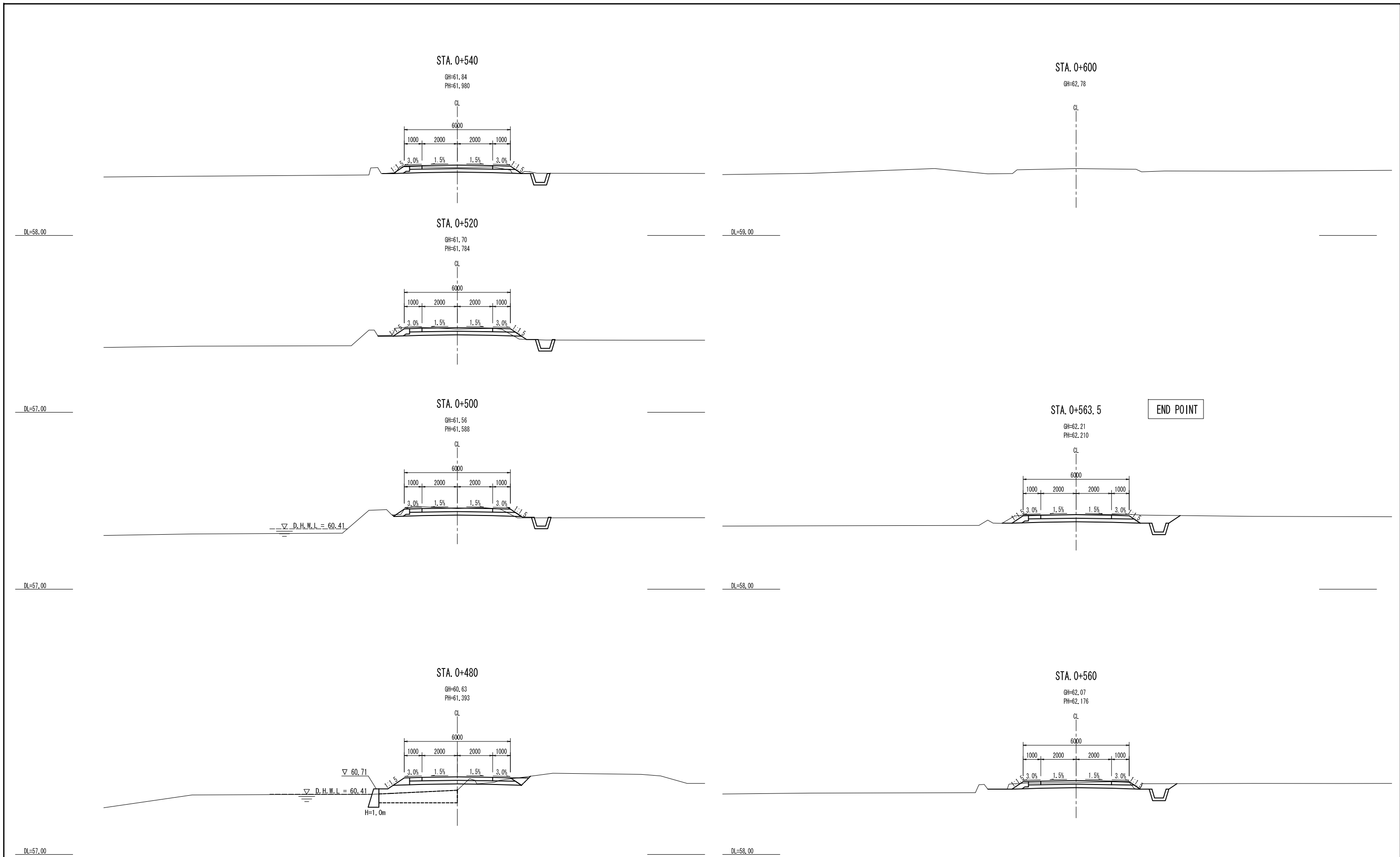
DEPARTMENT OF AGRARIAN REFORM THE REPUBLIC OF THE PHILIPPINES	BASIC DESIGN STUDY ON THE BRIDGE CONSTRUCTION PROJECT FOR EXPANDED AGRARIAN REFORM COMMUNITIES DEVELOPMENT	JAPAN INTERNATIONAL COOPERATION AGENCY CTI ENGINEERING INTERNATIONAL CO., LTD.	TITLE : BAZAL BRIDGE ROAD CROSS SECTION (1/4)	SCALE S=1:100	Drawing No. B13	/
--	---	---	--	------------------	--------------------	---



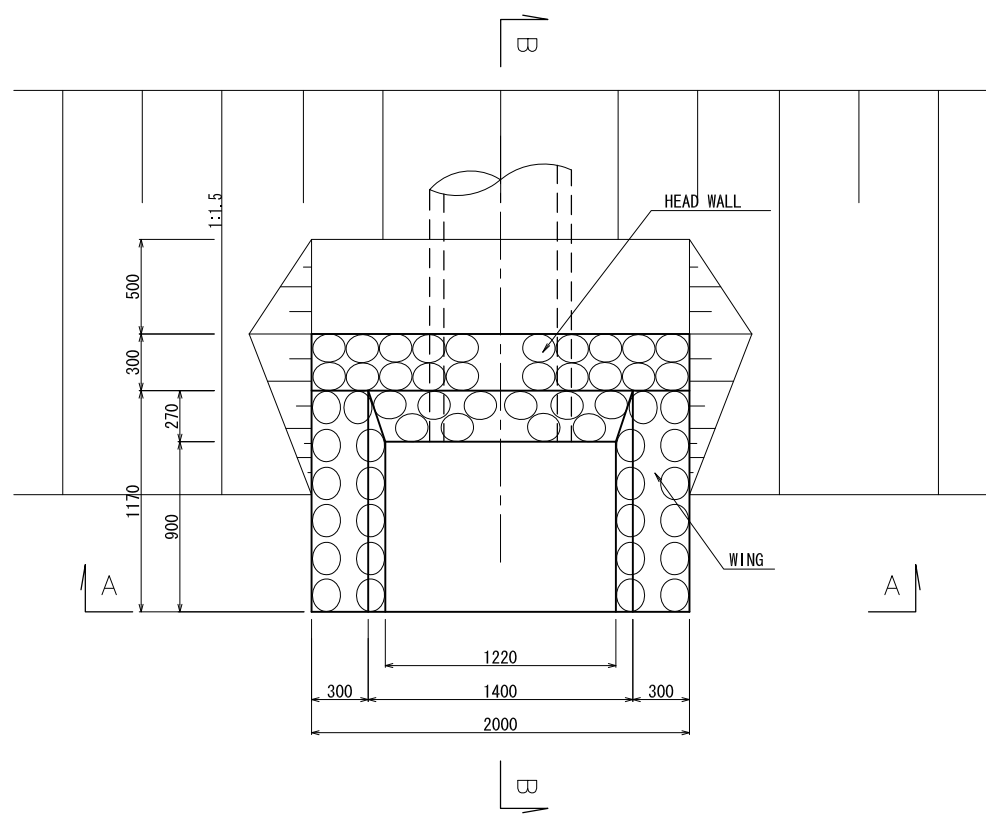
DEPARTMENT OF AGRARIAN REFORM THE REPUBLIC OF THE PHILIPPINES	BASIC DESIGN STUDY ON THE BRIDGE CONSTRUCTION PROJECT FOR EXPANDED AGRARIAN REFORM COMMUNITIES DEVELOPMENT	JAPAN INTERNATIONAL COOPERATION AGENCY CTI ENGINEERING INTERNATIONAL CO., LTD.	TITLE : BAZAL BRIDGE ROAD CROSS SECTION (2/4)	SCALE S=1:100	Drawing No. B14
--	---	---	--	------------------	--------------------



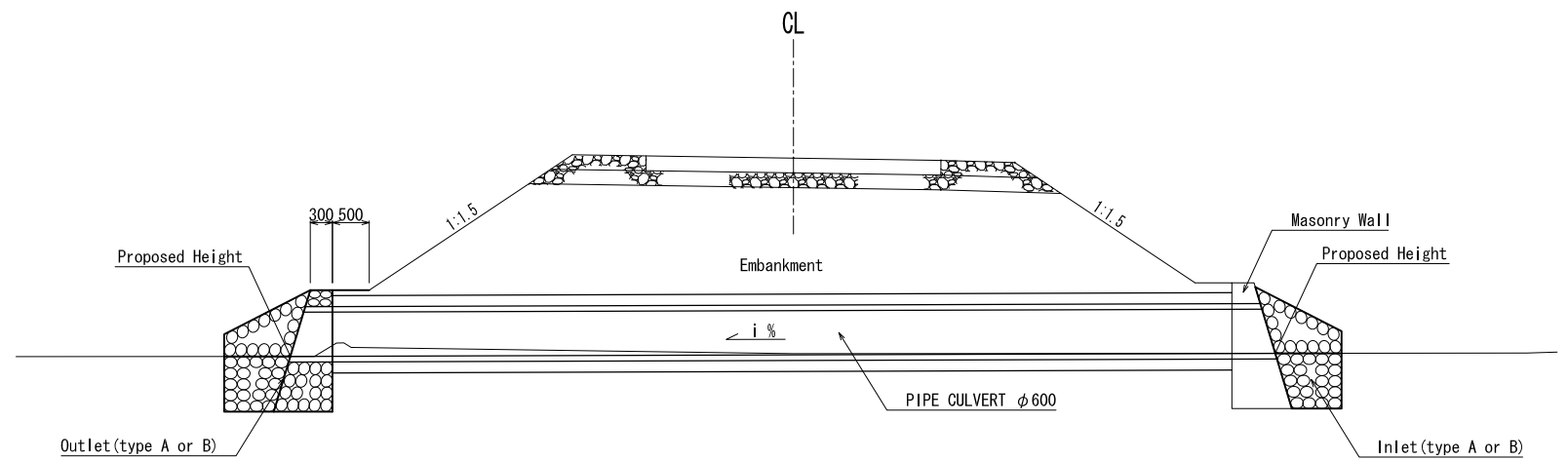
DEPARTMENT OF AGRARIAN REFORM THE REPUBLIC OF THE PHILIPPINES	BASIC DESIGN STUDY ON THE BRIDGE CONSTRUCTION PROJECT FOR EXPANDED AGRARIAN REFORM COMMUNITIES DEVELOPMENT	JAPAN INTERNATIONAL COOPERATION AGENCY CTI ENGINEERING INTERNATIONAL CO., LTD.	TITLE : BAZAL BRIDGE ROAD CROSS SECTION (3/4)	SCALE S=1:100	Drawing No. B15
--	---	---	--	------------------	--------------------



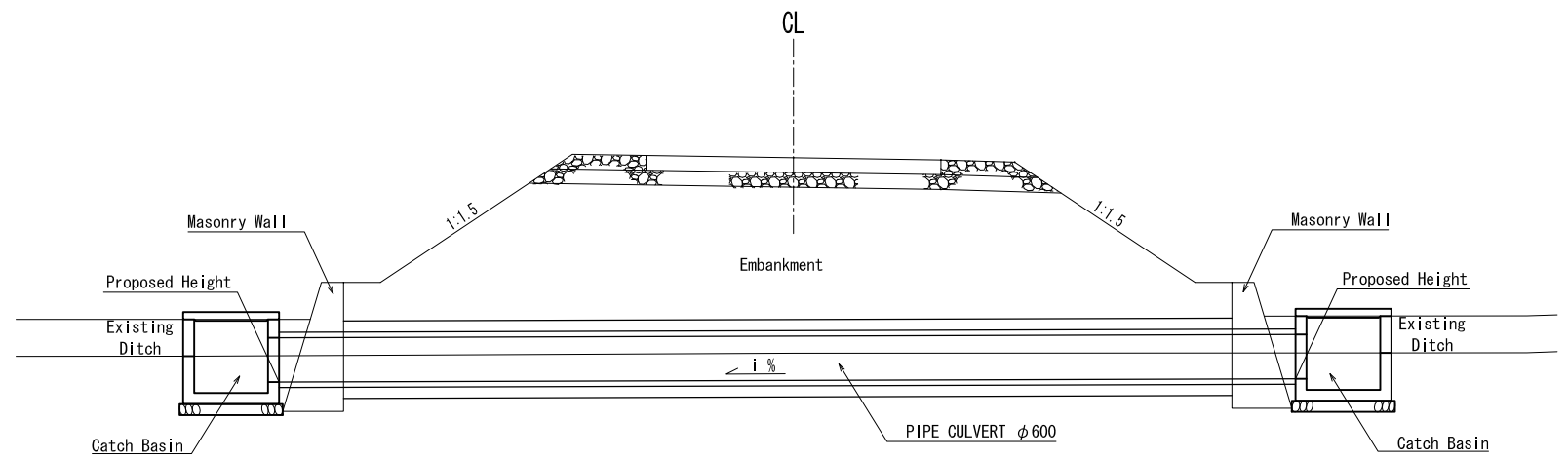
DEPARTMENT OF AGRARIAN REFORM THE REPUBLIC OF THE PHILIPPINES	BASIC DESIGN STUDY ON THE BRIDGE CONSTRUCTION PROJECT FOR EXPANDED AGRARIAN REFORM COMMUNITIES DEVELOPMENT	JAPAN INTERNATIONAL COOPERATION AGENCY CTI ENGINEERING INTERNATIONAL CO., LTD.	TITLE : BAZAL BRIDGE ROAD CROSS SECTION (4/4)	SCALE S=1:100	Drawing No. B16	/
--	---	---	--	------------------	--------------------	---



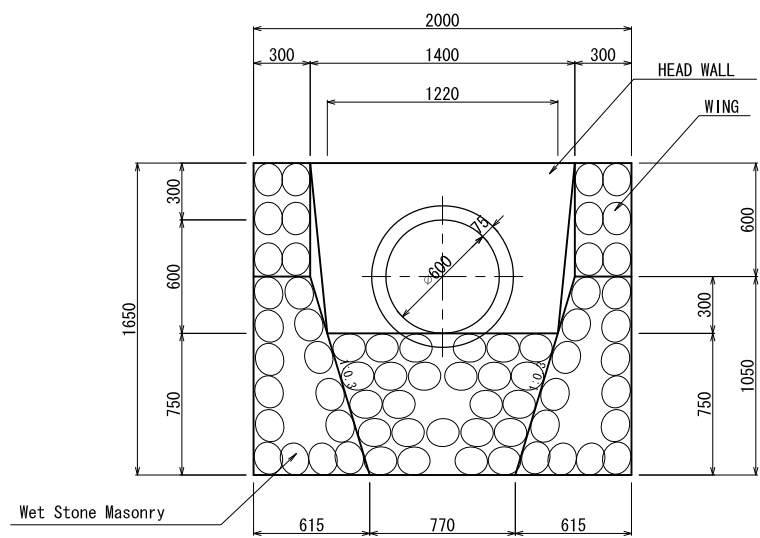
PLAN



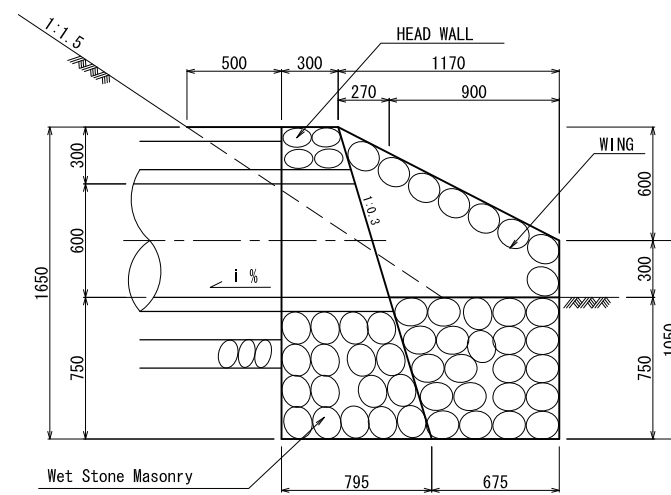
CROSS DRAINAGE (INLET/OUTLET) S=1:50



CROSS DRAINAGE (CATCH BASIN) S=1:50



SECTION A-A



SECTION B-B

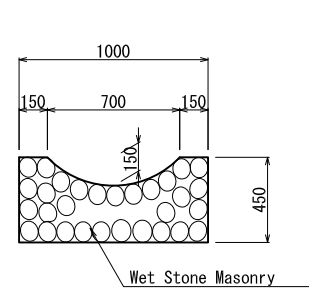
INLET/OUTLET (TYPE A) STRUCTURE S=1:20

INLET/OUTLET (TYPE B) (WING ONLY)

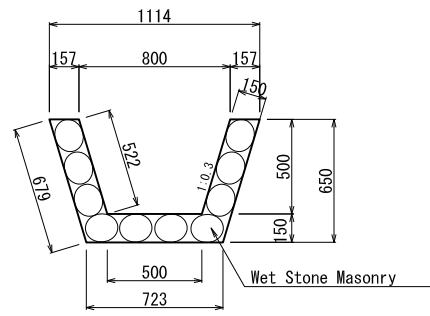
TABLE OF CONTENTS

STATION	INLET		OUTLET		PIPE CULVERT LENGTH (m)
	TYPE	PH	TYPE	PH	
0+60.0	A	58.25	A	58.22	9.50
0+138.0	catch basin	59.33	catch basin	58.70	15.20
0+350.0	B	59.74	B	59.63	15.90
0+381.5	catch basin	59.11	catch basin	59.03	13.70
0.420.0	B	59.26	B	59.24	10.30
0+480.0	A	60.01	B	59.81	9.70

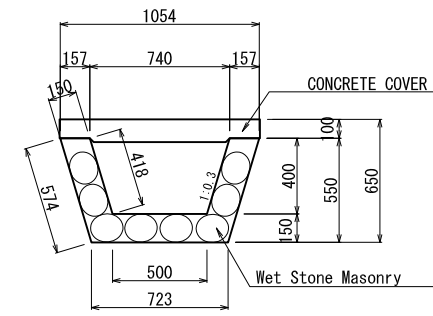
NOTE: PH= PROPOSED HEIGHT



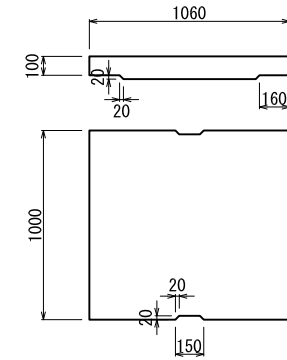
SLOPE DRAIN  
S=1:20



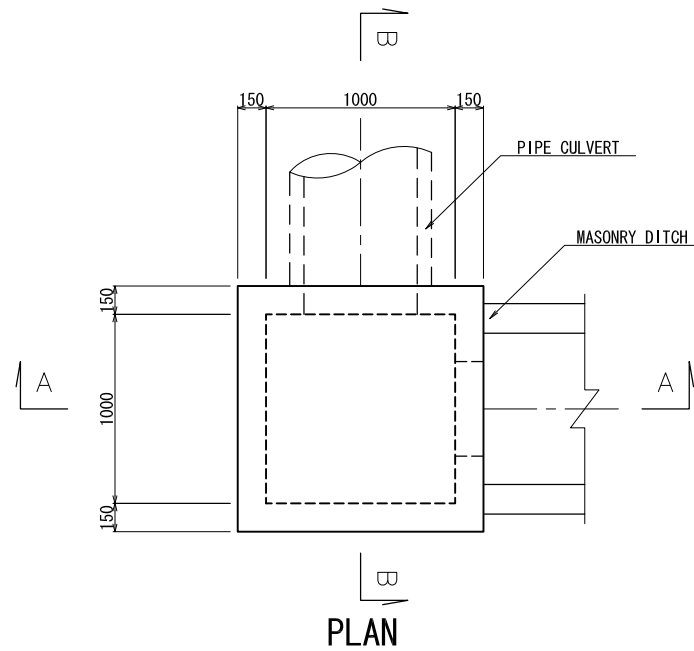
TYPE A



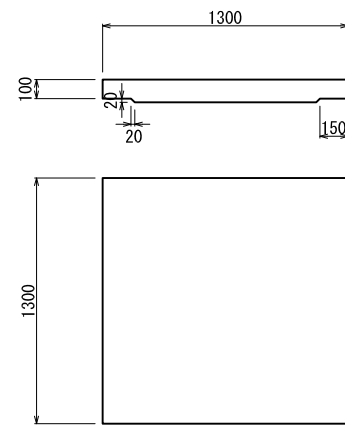
TYPE B  
MASONRY DITCH S=1:20



CONCRETE COVER



PLAN



CONCRETE COVER

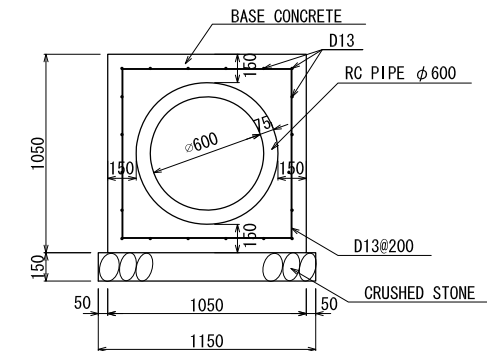
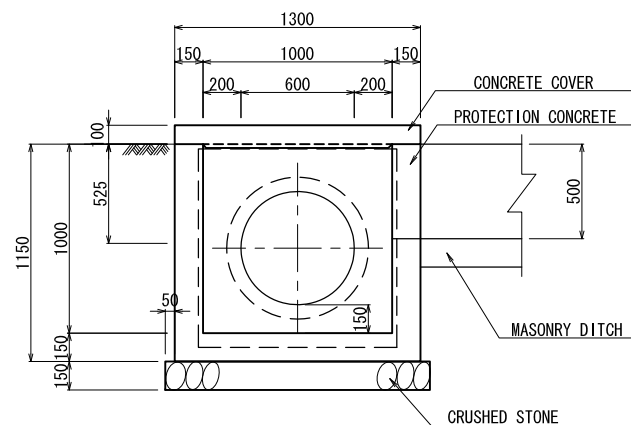
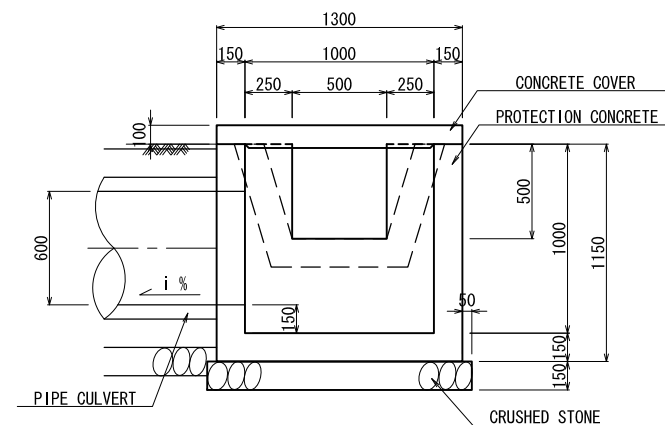


TABLE OF CONTENTS		UNIT: 10m
ITEM	STANDARD	QUANTITY
CONCRETE	$\sigma C k = 18N/mm^2$	6.61 m <sup>3</sup>
FRAME WORK		20.0 m <sup>2</sup>
CRUSHED STONE	RC-40	11.5 m <sup>2</sup>
HUME PIPE	D600	10.0 m
BAR	D13	429.84 kg

PIPE CULVERT 1:20



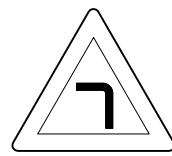
SECTION A-A



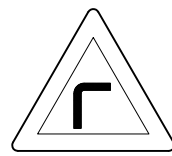
SECTION B-B

CATCH BASIN (TYPE A) S=1:20

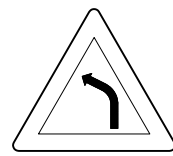




SHARP TURN  
W 1-1 (L)



SHARP TURN  
W 1-1 (R)



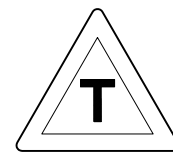
CURVE AHEAD  
W 1-3 (L)



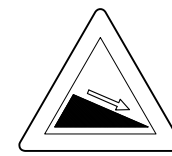
CURVE AHEAD  
W 1-3 (R)



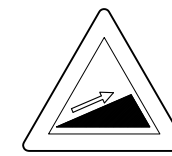
WINDING ROAD  
W 1-5



T JUNCTION  
W 2-4



STEEP DESCENT  
W 5-4



STEEP CLIMB  
W 5-5



SPEED LIMIT  
R 4-1

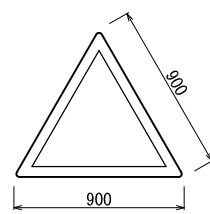


VEHICLE LOAD LIMIT  
R 6-4

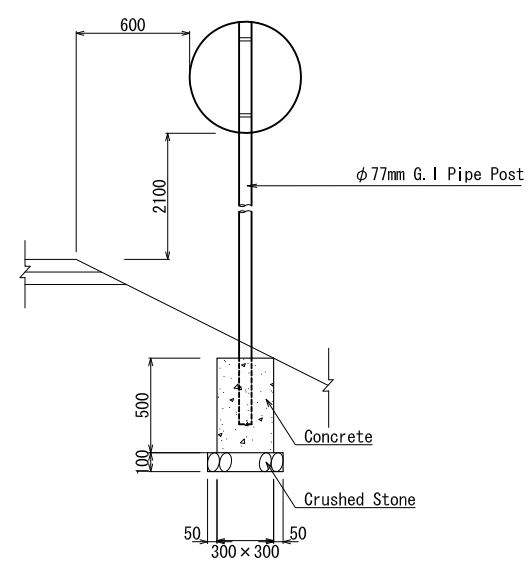
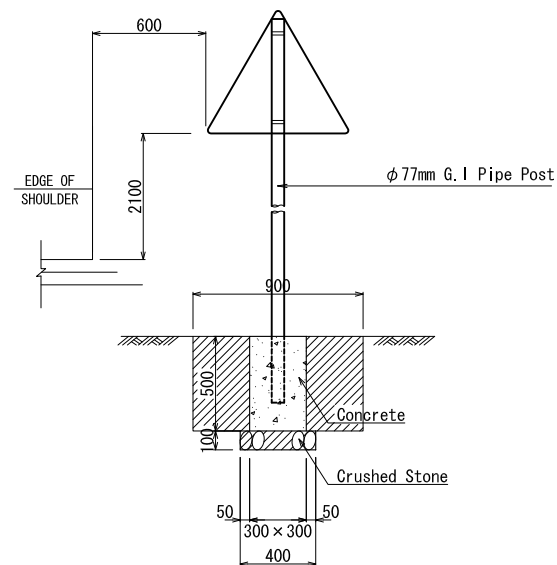
WARNING SIGN

PROHIBITORY SIGN

WARNING SIGN

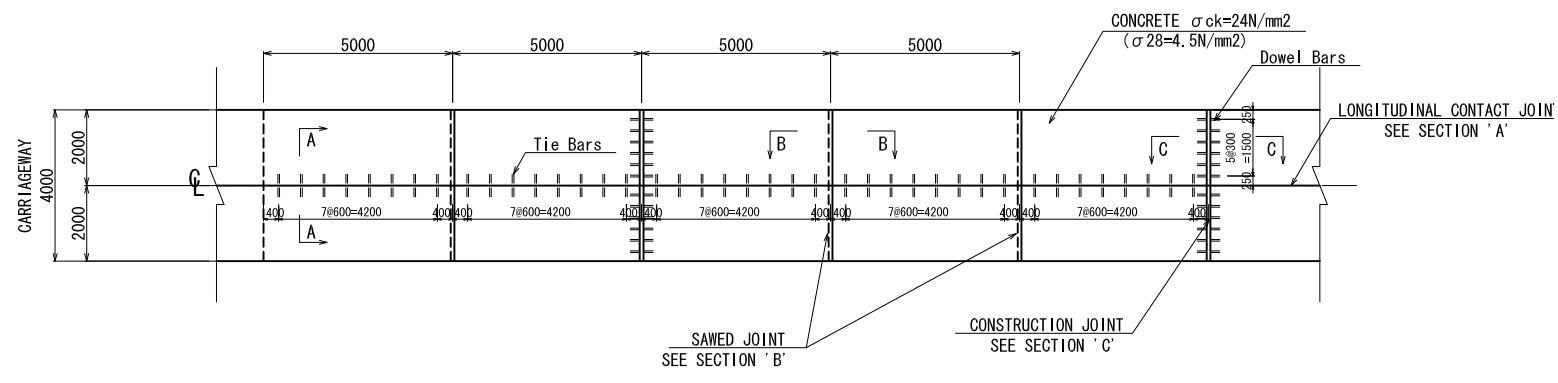


PROHIBITORY SIGN

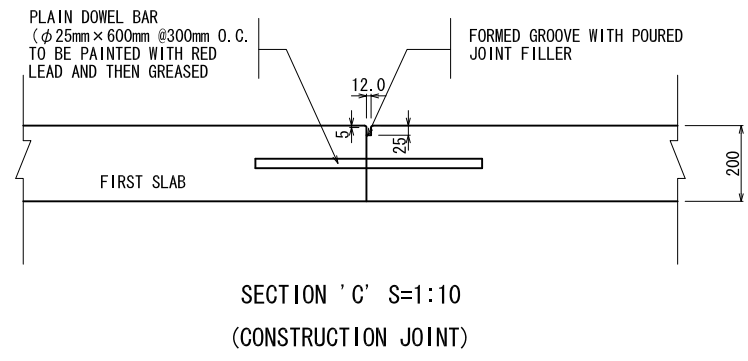
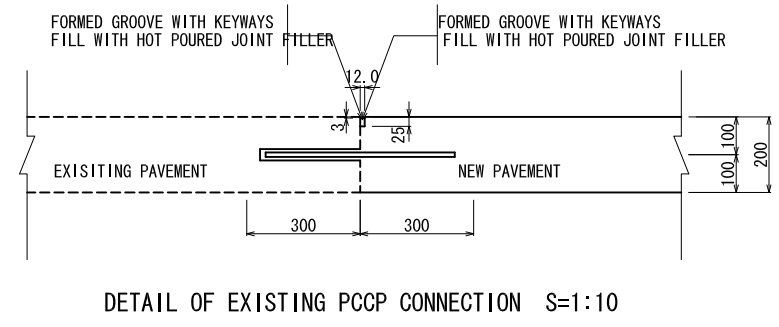
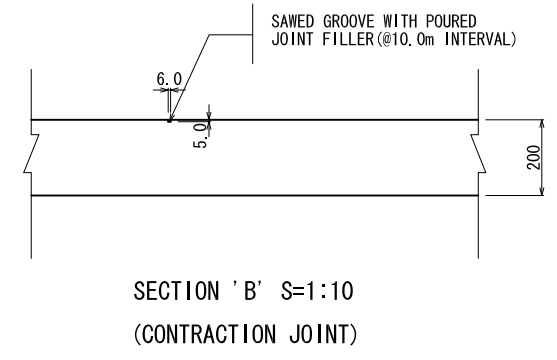
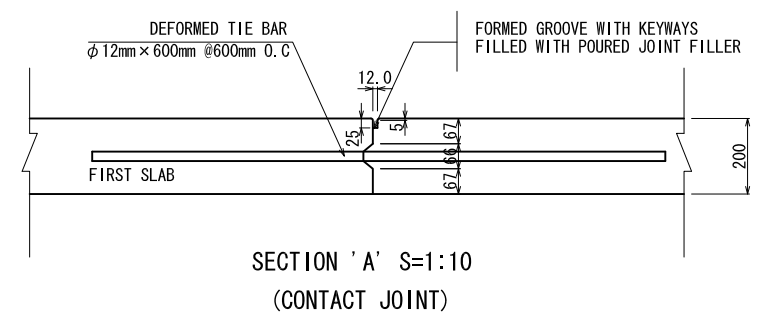


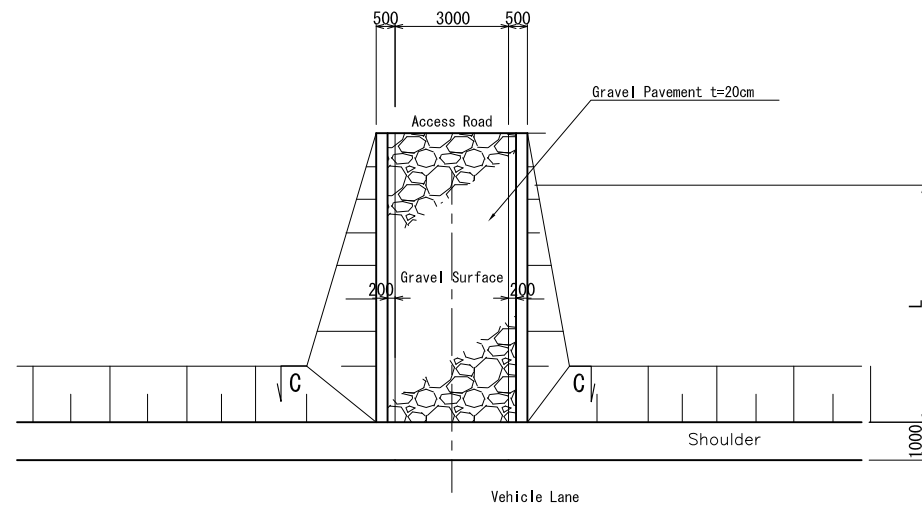
LIST OF TRAFFIC SIGNS (BAZAL)

STATION	SHARP TURN		SHARP TURN		CURVE AHEAD		CURVE AHEAD		WINDING ROAD		T JUNCTION		STEEP DESCENT		STEEP CLIMB		STEEP LIMIT		VEHICLE LOAD LIMIT		
	W 1-1(L)		W 1-1(R)		W 1-3(L)		W 1-3(R)		W 1-5		W 2-4		W 5-4		W 5-5		R 4-1		R 6-4		
	L	R	L	R	L	R	L	R	L	R	L	R	L	R	L	R	L	R	L	R	
0+60.0																1			1		
0+160.0						1															
0+207.0																					1
0+327.0													1								
0+333.0									1												
0+207.0								1					1								
0+327.0																					1
0+447.0						1															
0+460.0															1						
0+563.0																					1
SUBTOTAL	0	0	0	0	1	1	1	1	0	0	0	0	1	1	1	1	1	1	1	1	1
SUM OF L & R	0	0	0	0	2	2	2	2	0	0	0	0	2	2	2	2	2	2	2	2	2
TOTAL	12																				

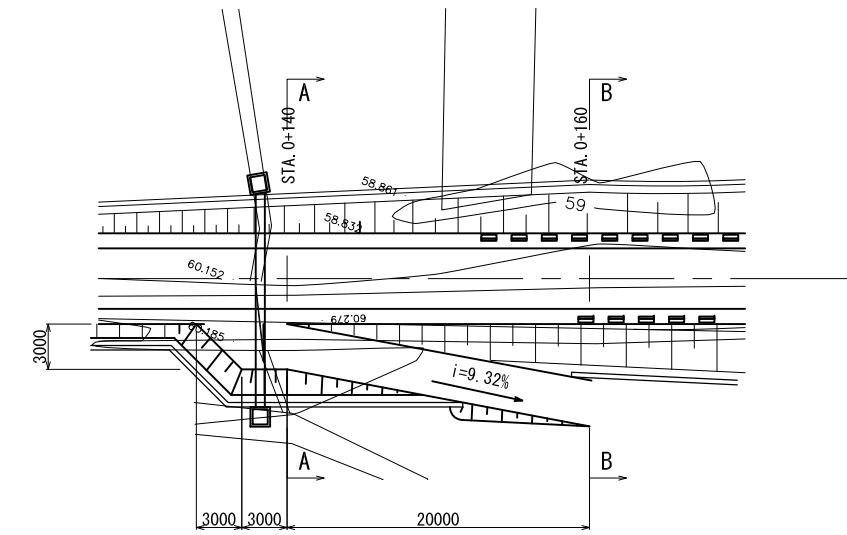


PLAN S=1:100

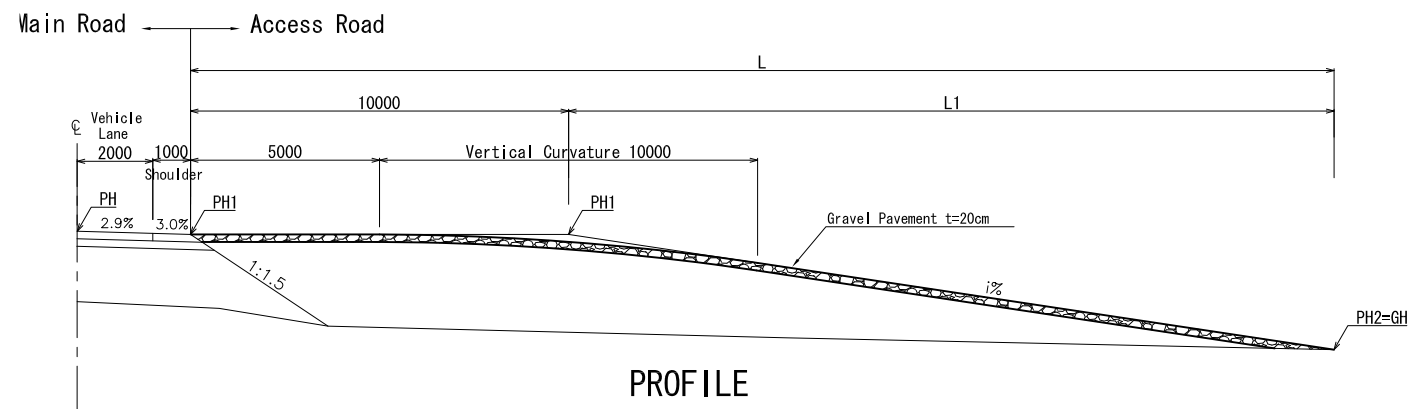




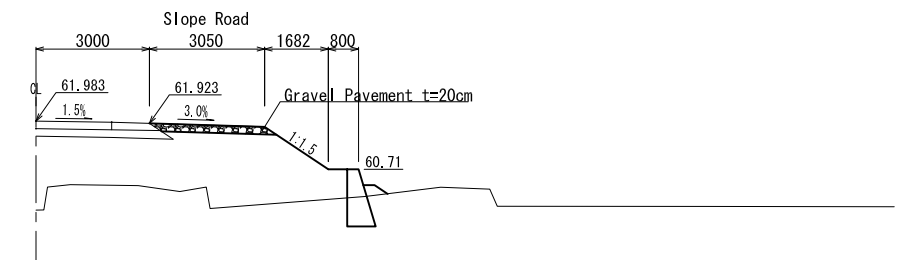
PLAN



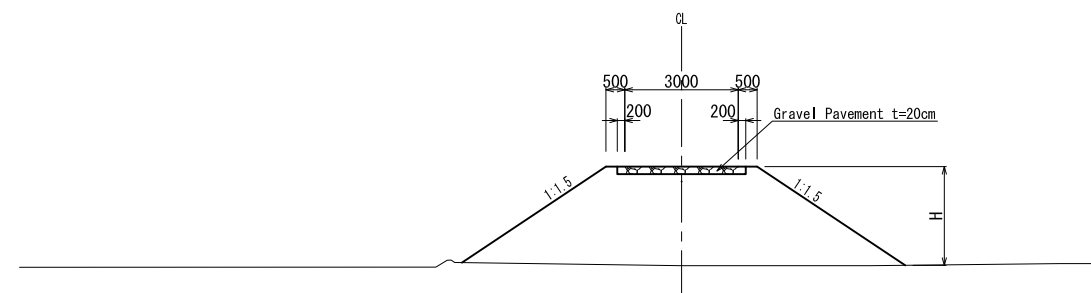
PLAN S=1:250



PROFILE

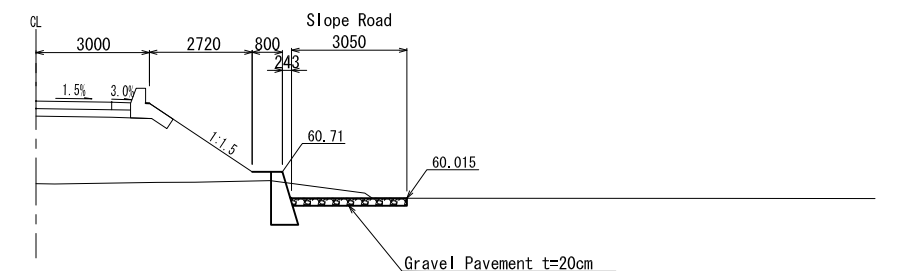


SECTION A-A S=1:100

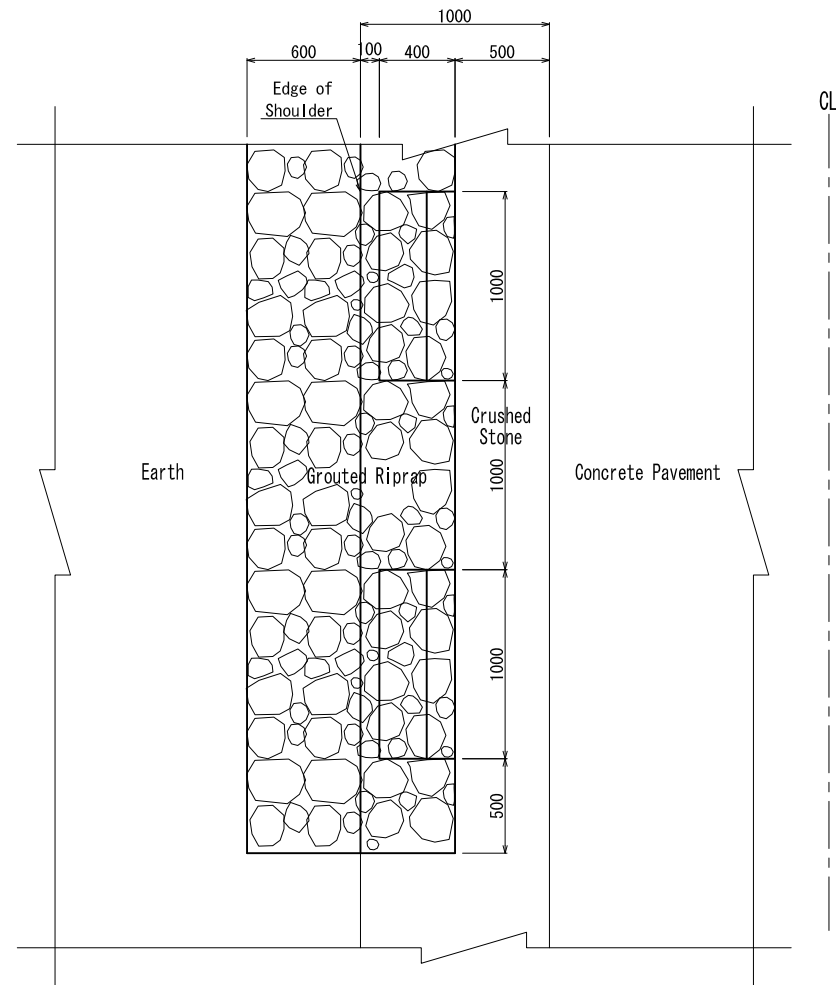


C-C SECTION  
DETAIL OF ACCESS ROAD S=1:100

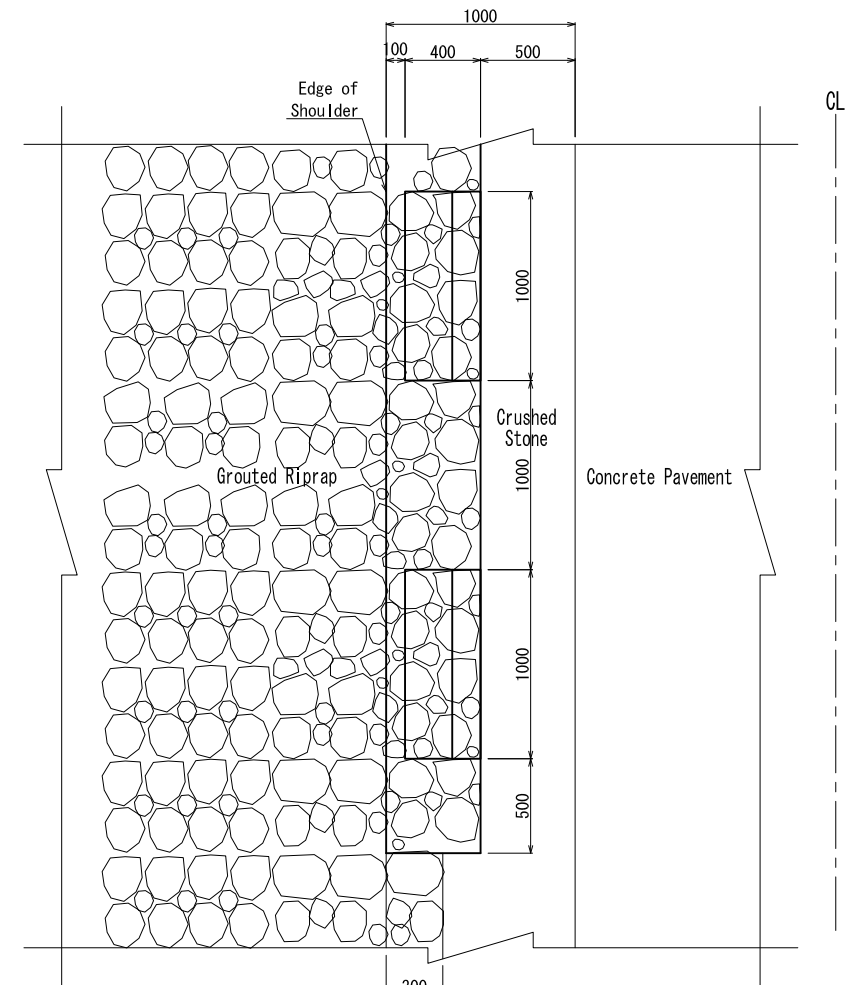
Access Road	Station	PH (m)	PH1 (m)	PH2=GH (m)	i (%)	L1 (m)	L (m)	H (m)
A	0+386.6 (L)	62.205	62.117	60.00	6.0	35.3	45.3	1.98
B	0+386.6 (R)	62.205	62.117	61.00	5.0	22.3	32.3	1.57



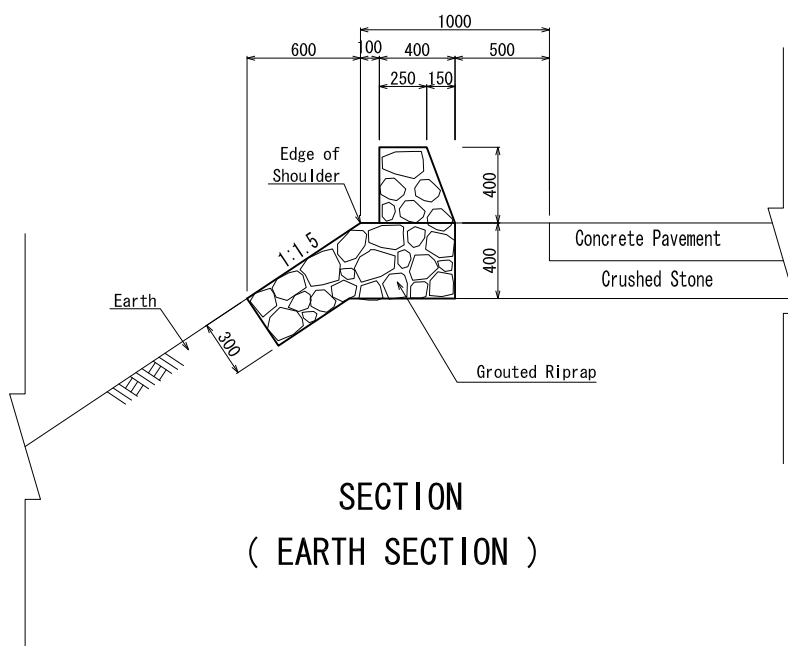
SECTION B-B S=1:100  
DETAIL OF SLOPE ROAD  
( STA. 0+140 (R) )



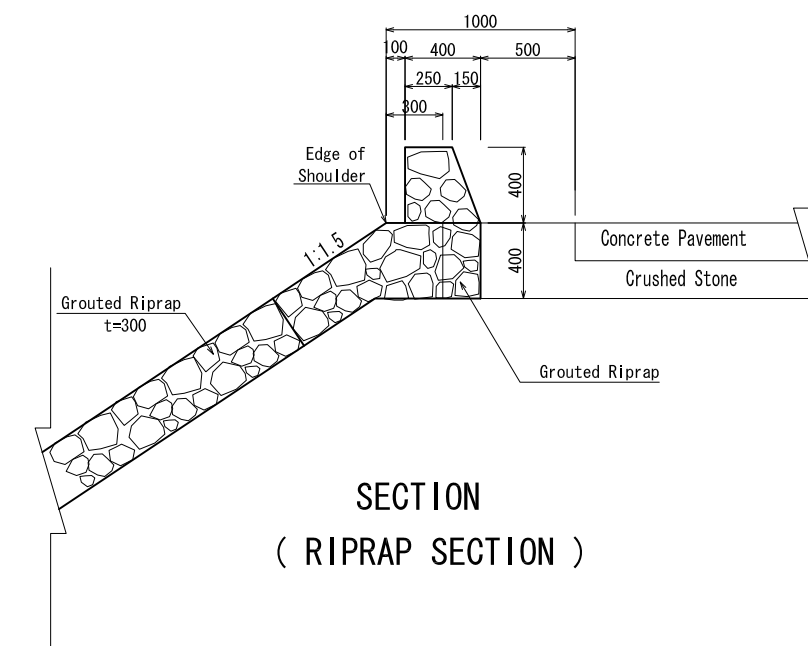
PLAN  
( EARTH SECTION )



PLAN  
( RIPRAP SECTION )



SECTION  
( EARTH SECTION )



SECTION  
( RIPRAP SECTION )

RIPRAP GUARDBLOCK (TYPE A) S=1:20

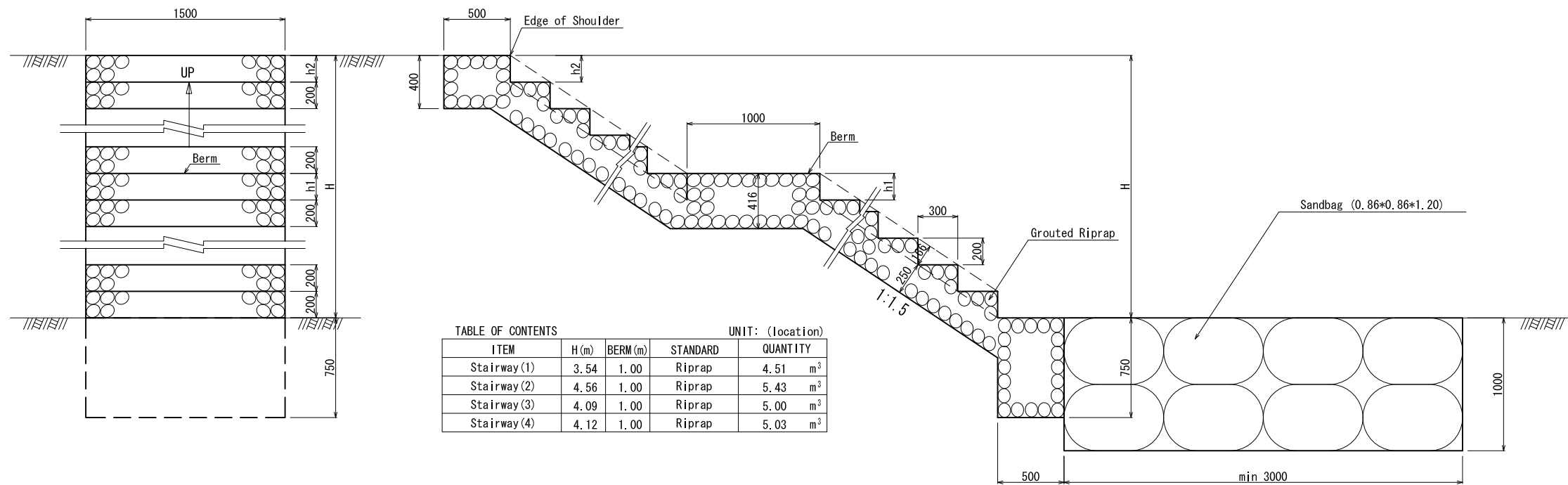
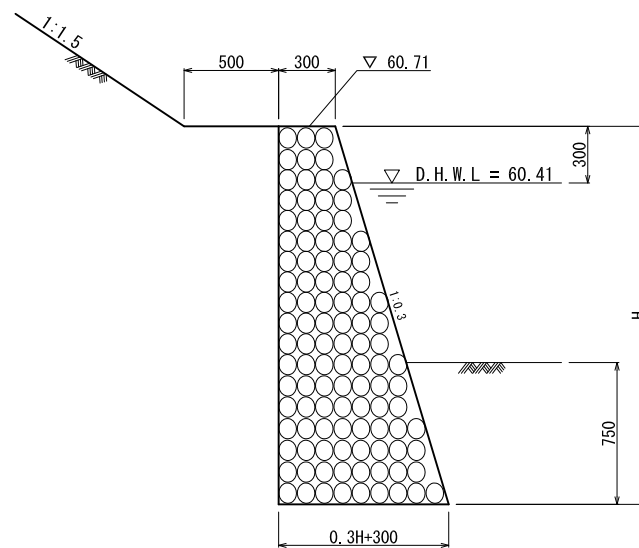


TABLE OF CONTENTS UNIT: (location)

ITEM	H (m)	BERM (m)	STANDARD	QUANTITY
Stairway (1)	3.54	1.00	Riprap	4.51 m <sup>3</sup>
Stairway (2)	4.56	1.00	Riprap	5.43 m <sup>3</sup>
Stairway (3)	4.09	1.00	Riprap	5.00 m <sup>3</sup>
Stairway (4)	4.12	1.00	Riprap	5.03 m <sup>3</sup>

STAIRWAY S=1:20



LIST OF MASONRY WALL

STATION	H (m)	
	LEFT SIDE	RIGHT SIDE
0+80.0	1.80	1.20
0+100.0	2.20	1.70
0+120.0	2.20	1.60
0+140.0	1.90	1.50
0+160.0	2.50	1.40
0+180.0	2.30	1.40
0+200.0	2.50	1.40
0+340.0	2.00	1.80
0+360.0	1.70	1.50
0+380.0	1.70	1.70
0+400.0	2.00	1.50
0+420.0	2.20	2.20
0+440.0	2.20	1.70
0+460.0	1.70	1.80
0+480.0	1.00	---

MASONRY WALL (TYPE A) S=1:20