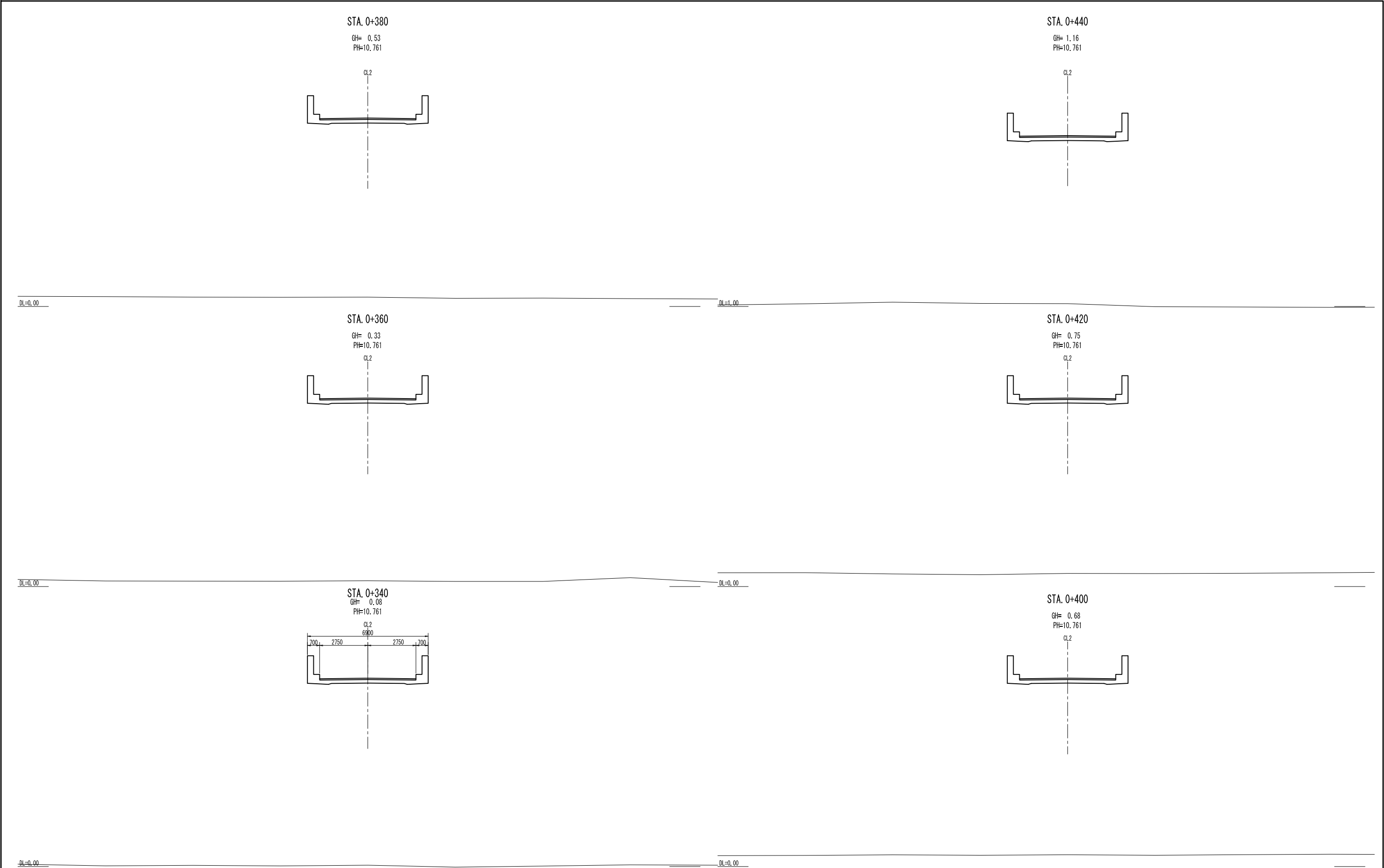
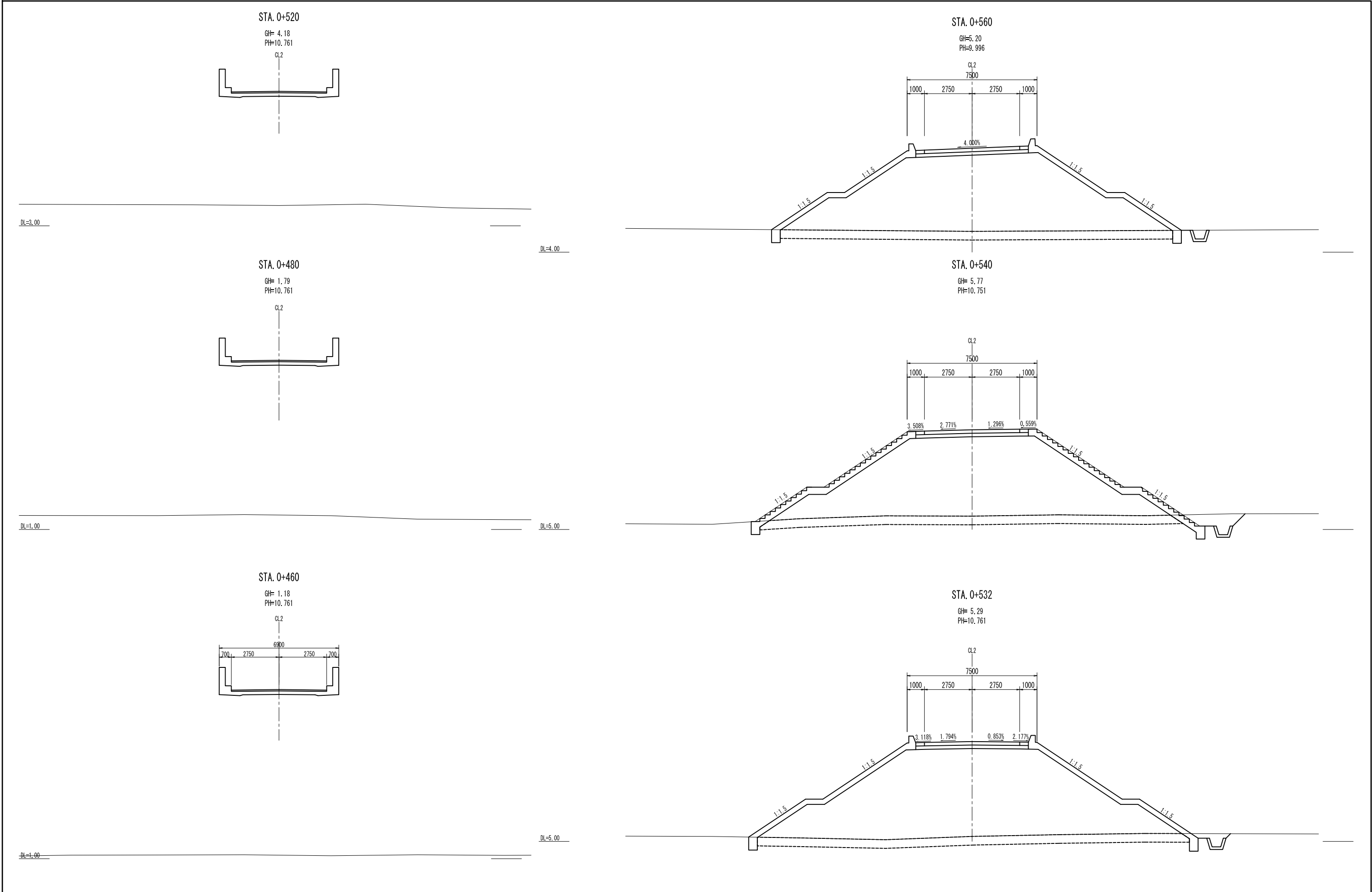


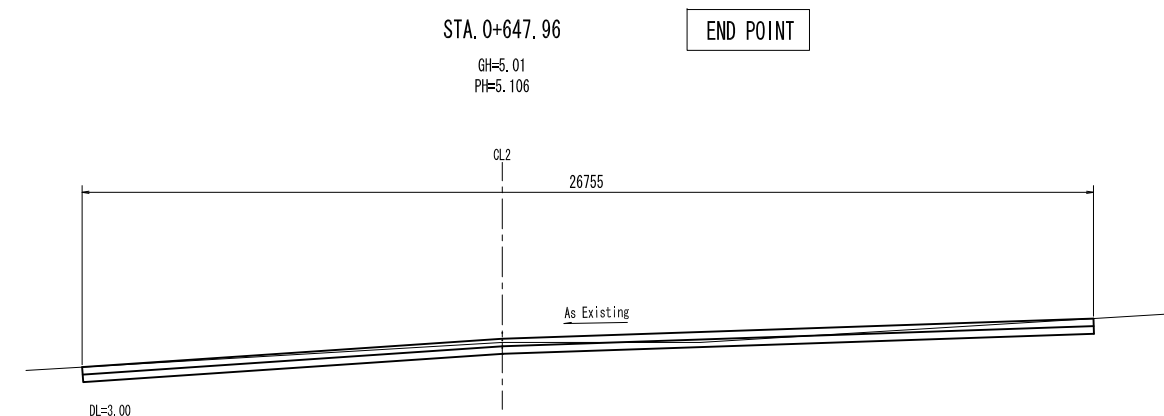
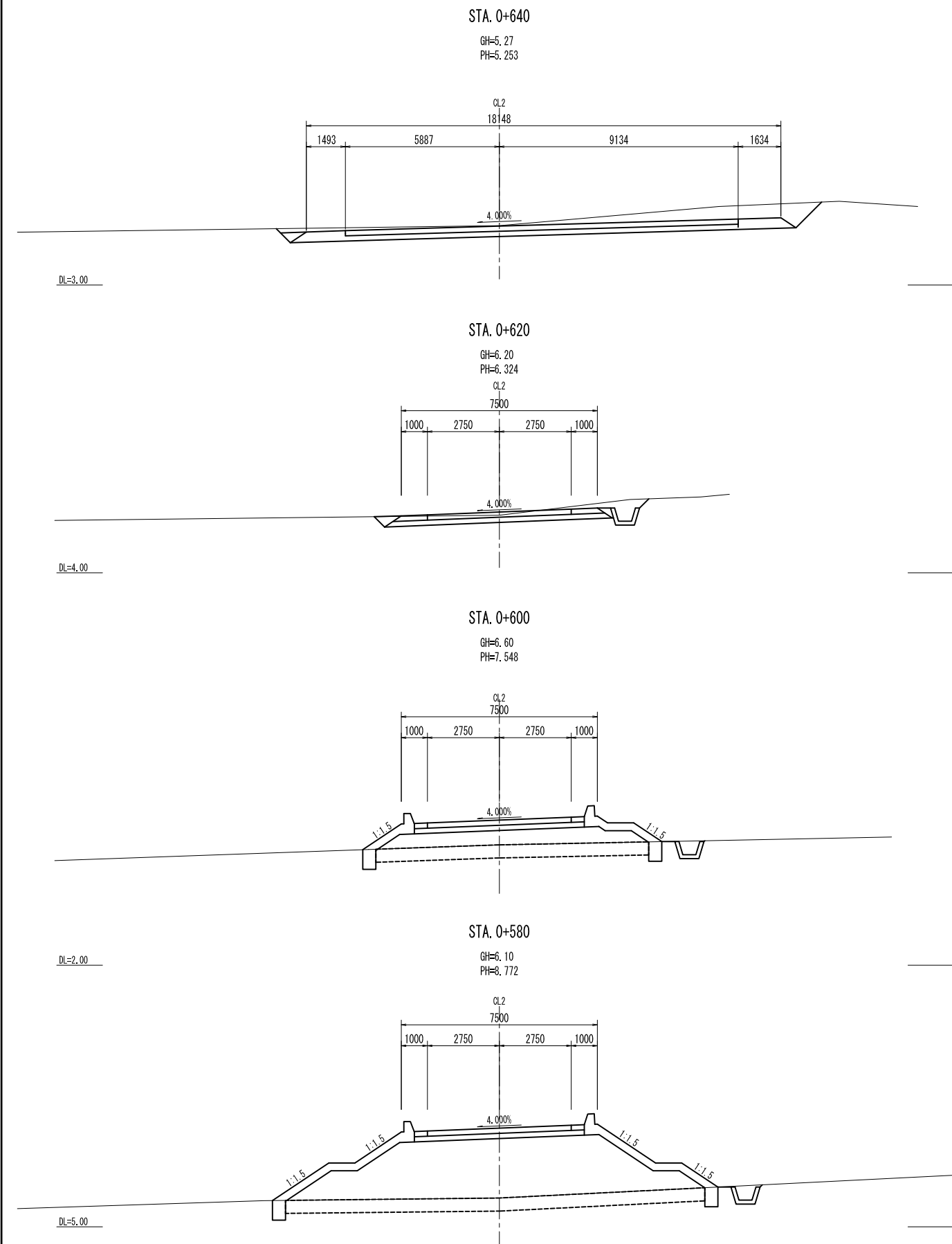
DEPARTMENT OF AGRARIAN REFORM THE REPUBLIC OF THE PHILIPPINES	BASIC DESIGN STUDY ON THE BRIDGE CONSTRUCTION PROJECT FOR EXPANDED AGRARIAN REFORM COMMUNITIES DEVELOPMENT	JAPAN INTERNATIONAL COOPERATION AGENCY CTI ENGINEERING INTERNATIONAL CO., LTD.	TITLE : UMIRAY BRIDGE ROAD CROSS SECTION (3/6)	SCALE S=1:100	Drawing No.	/
					U21	



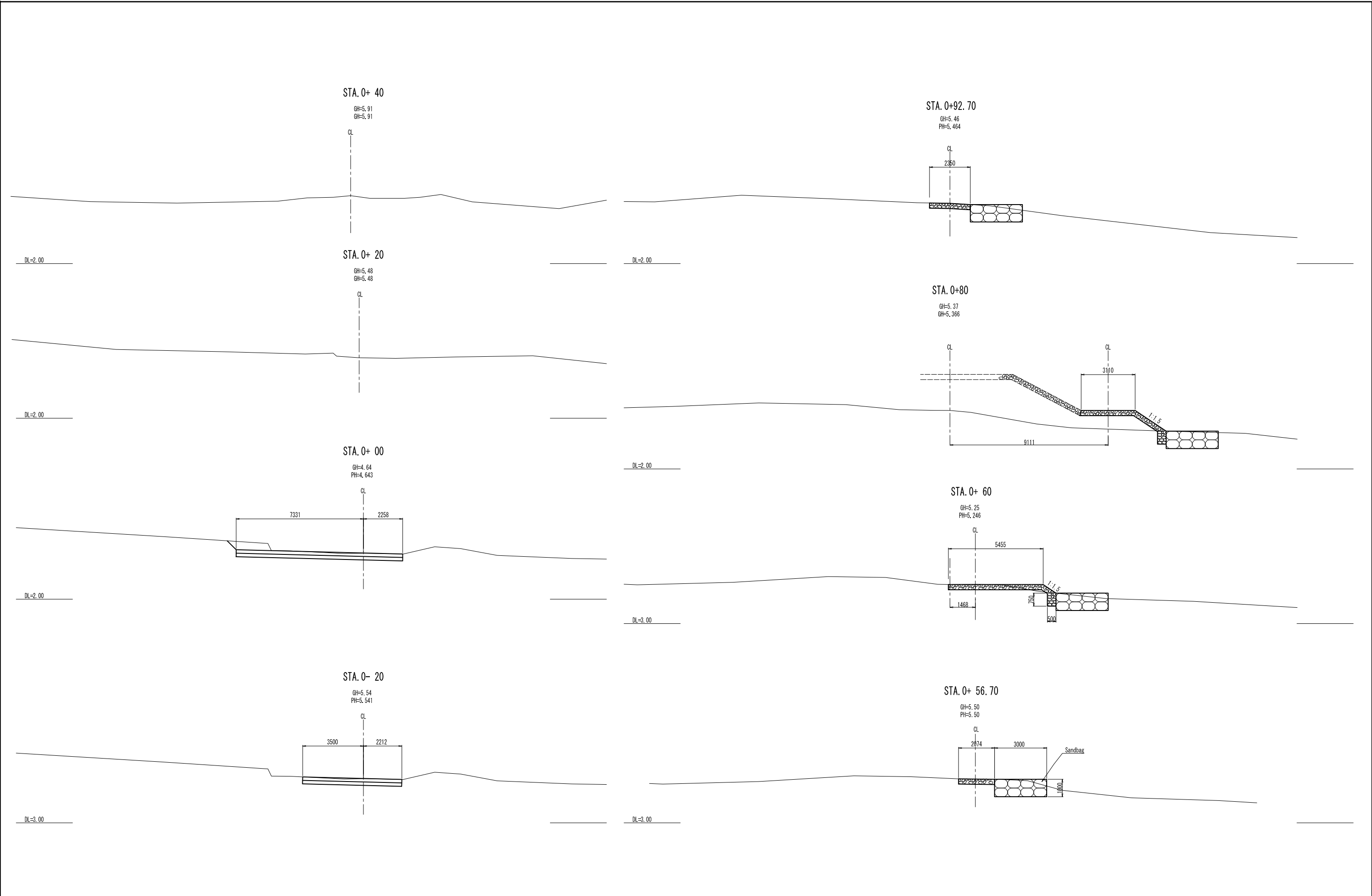
DEPARTMENT OF AGRARIAN REFORM THE REPUBLIC OF THE PHILIPPINES	BASIC DESIGN STUDY ON THE BRIDGE CONSTRUCTION PROJECT FOR EXPANDED AGRARIAN REFORM COMMUNITIES DEVELOPMENT	JAPAN INTERNATIONAL COOPERATION AGENCY CTI ENGINEERING INTERNATIONAL CO., LTD.	TITLE : UMIRAY BRIDGE ROAD CROSS SECTION (4/6)	SCALE S=1:100	Drawing No.	/
					U22	



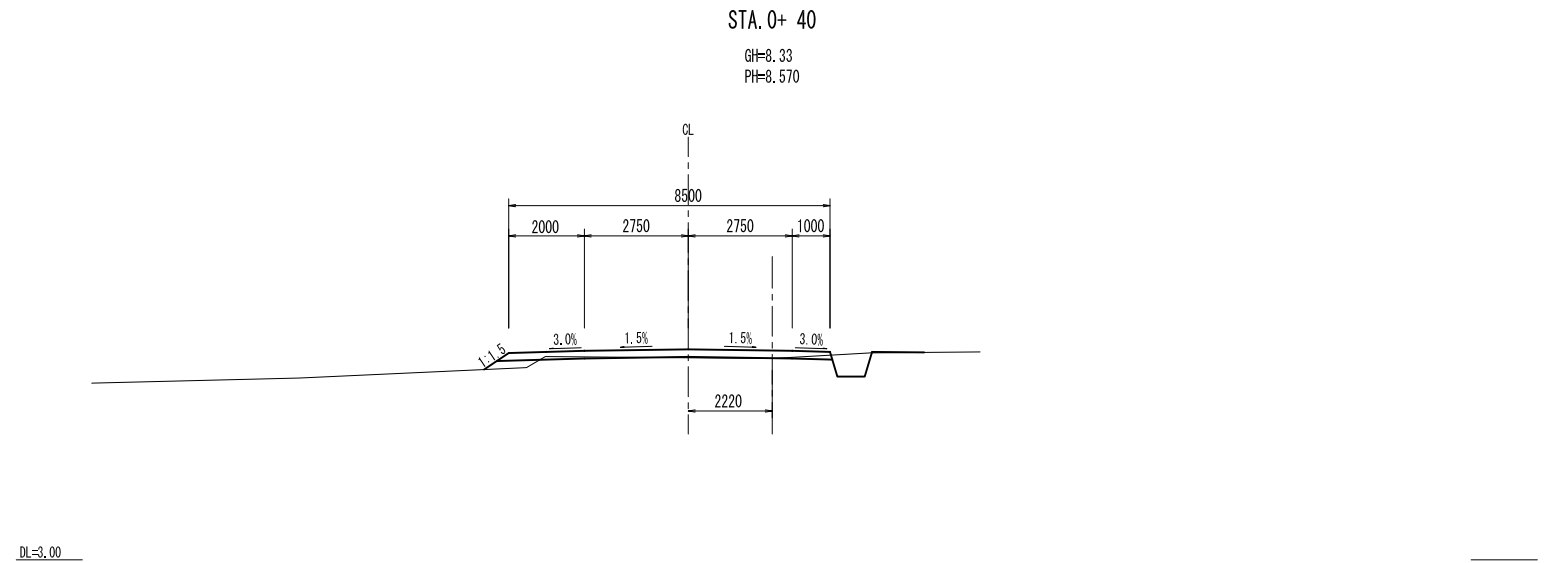
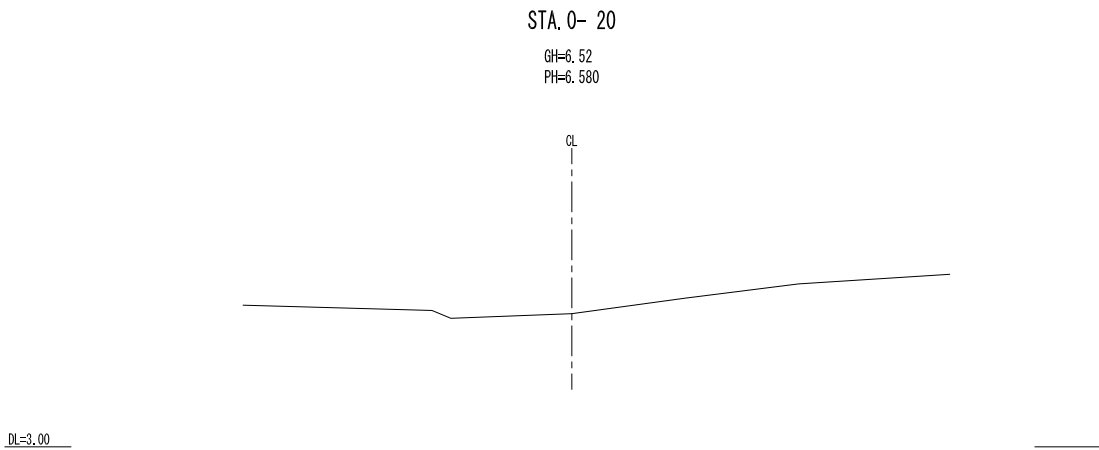
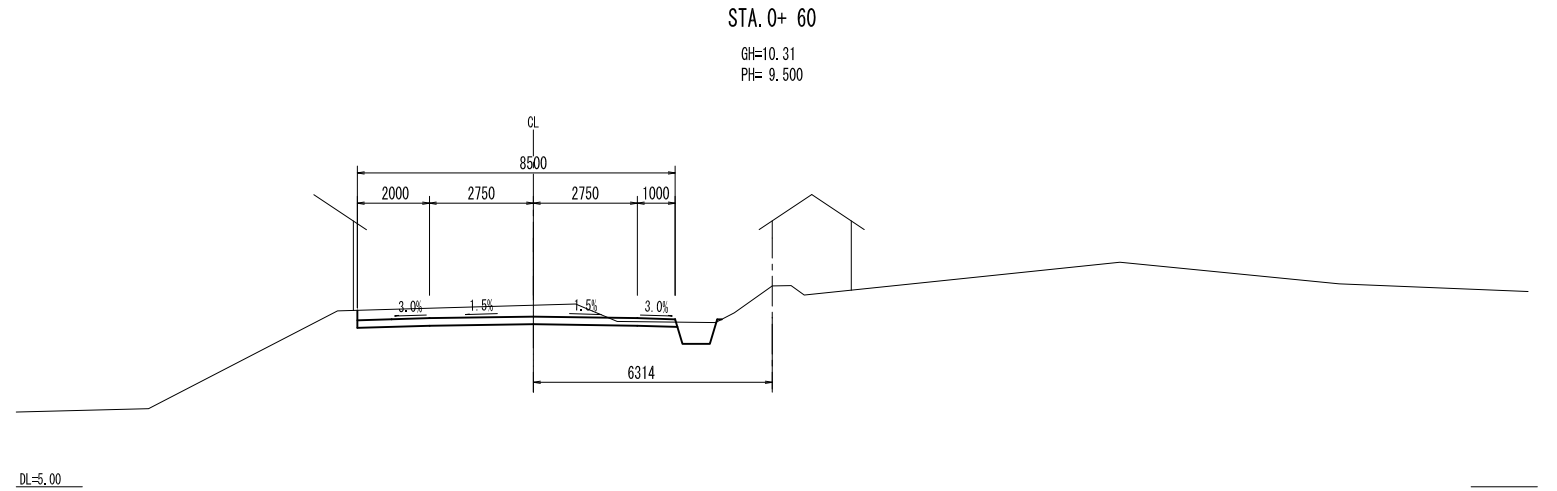
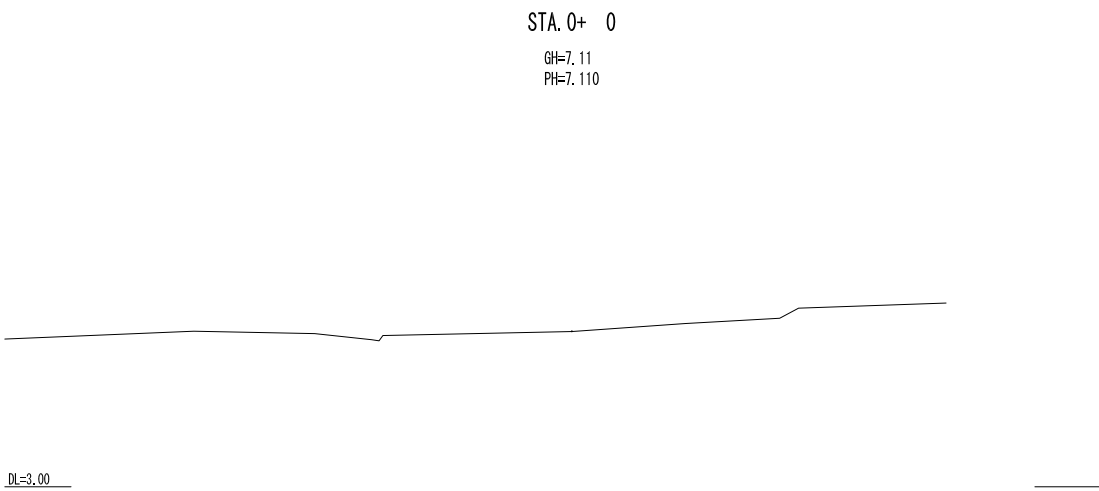
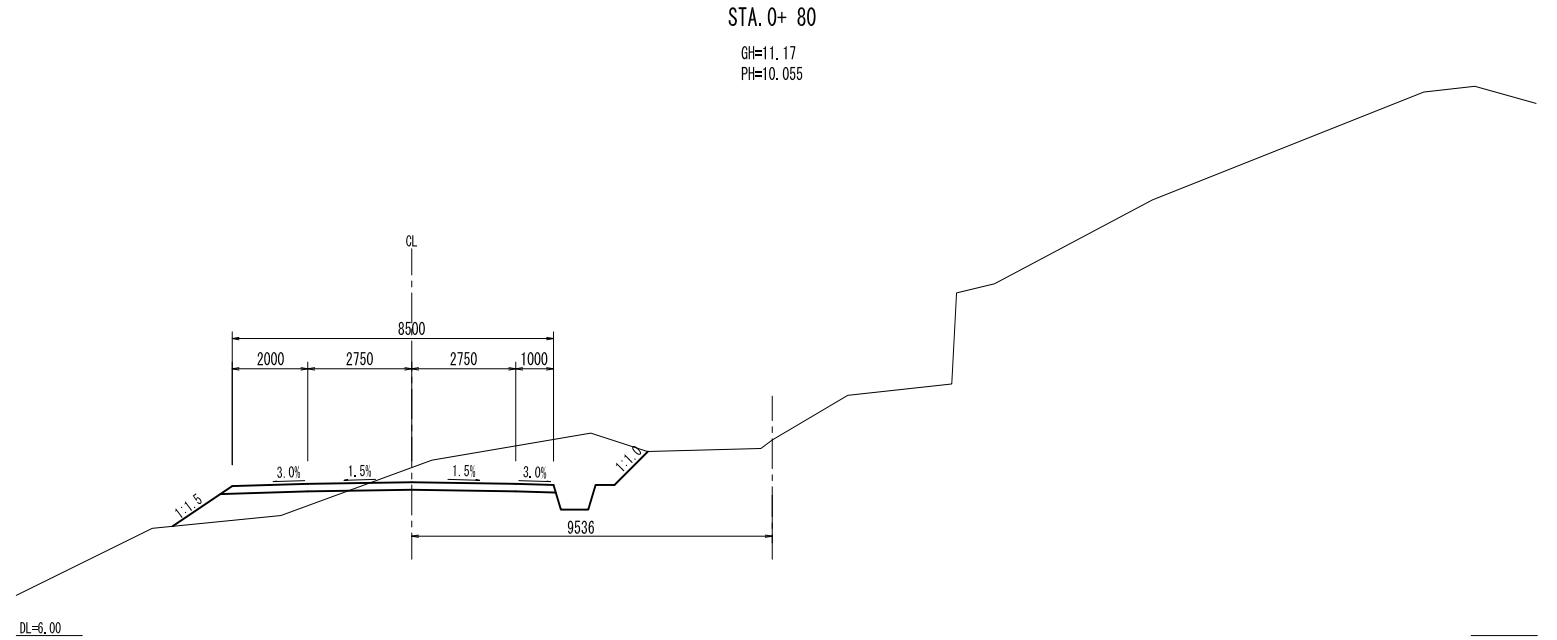
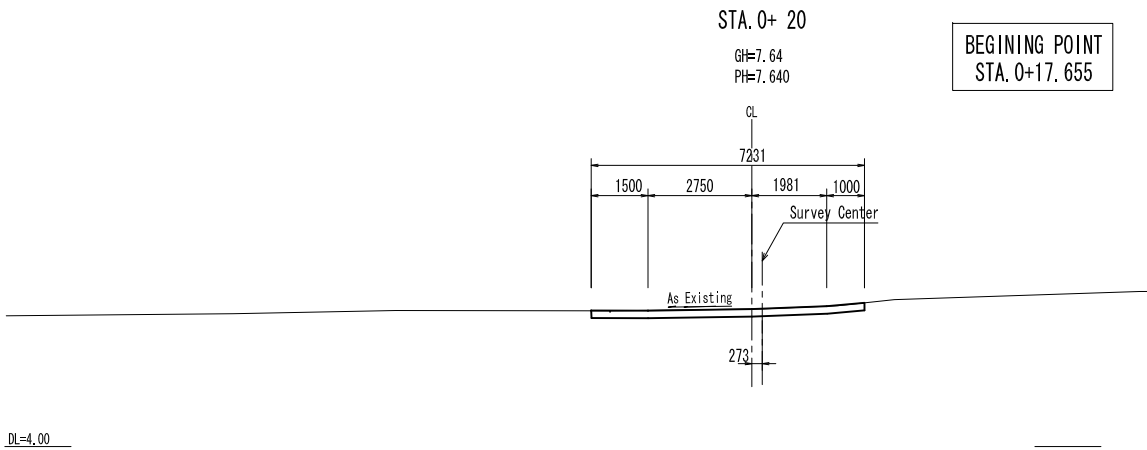
DEPARTMENT OF AGRARIAN REFORM THE REPUBLIC OF THE PHILIPPINES	BASIC DESIGN STUDY ON THE BRIDGE CONSTRUCTION PROJECT FOR EXPANDED AGRARIAN REFORM COMMUNITIES DEVELOPMENT	JAPAN INTERNATIONAL COOPERATION AGENCY CTI ENGINEERING INTERNATIONAL CO., LTD.	TITLE : UMIRAY BRIDGE ROAD CROSS SECTION (5/6)	SCALE S=1:100	Drawing No.	/
					U23	



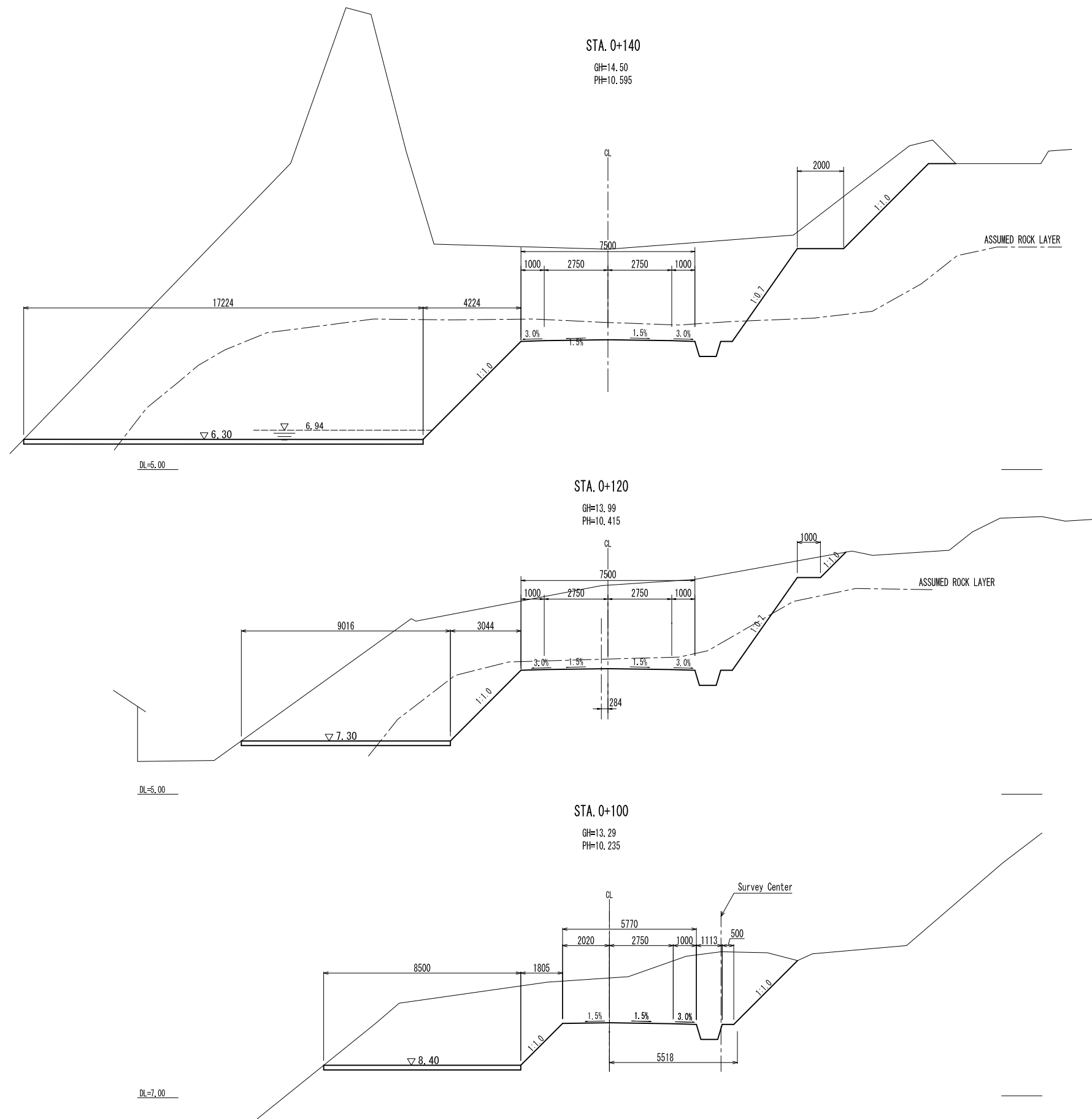
DEPARTMENT OF AGRARIAN REFORM THE REPUBLIC OF THE PHILIPPINES	BASIC DESIGN STUDY ON THE BRIDGE CONSTRUCTION PROJECT FOR EXPANDED AGRARIAN REFORM COMMUNITIES DEVELOPMENT	JAPAN INTERNATIONAL COOPERATION AGENCY CTI ENGINEERING INTERNATIONAL CO., LTD.	TITLE : UMIRAY BRIDGE ROAD CROSS SECTION (6/6)	SCALE S=1:100	Drawing No.	/
					U24	



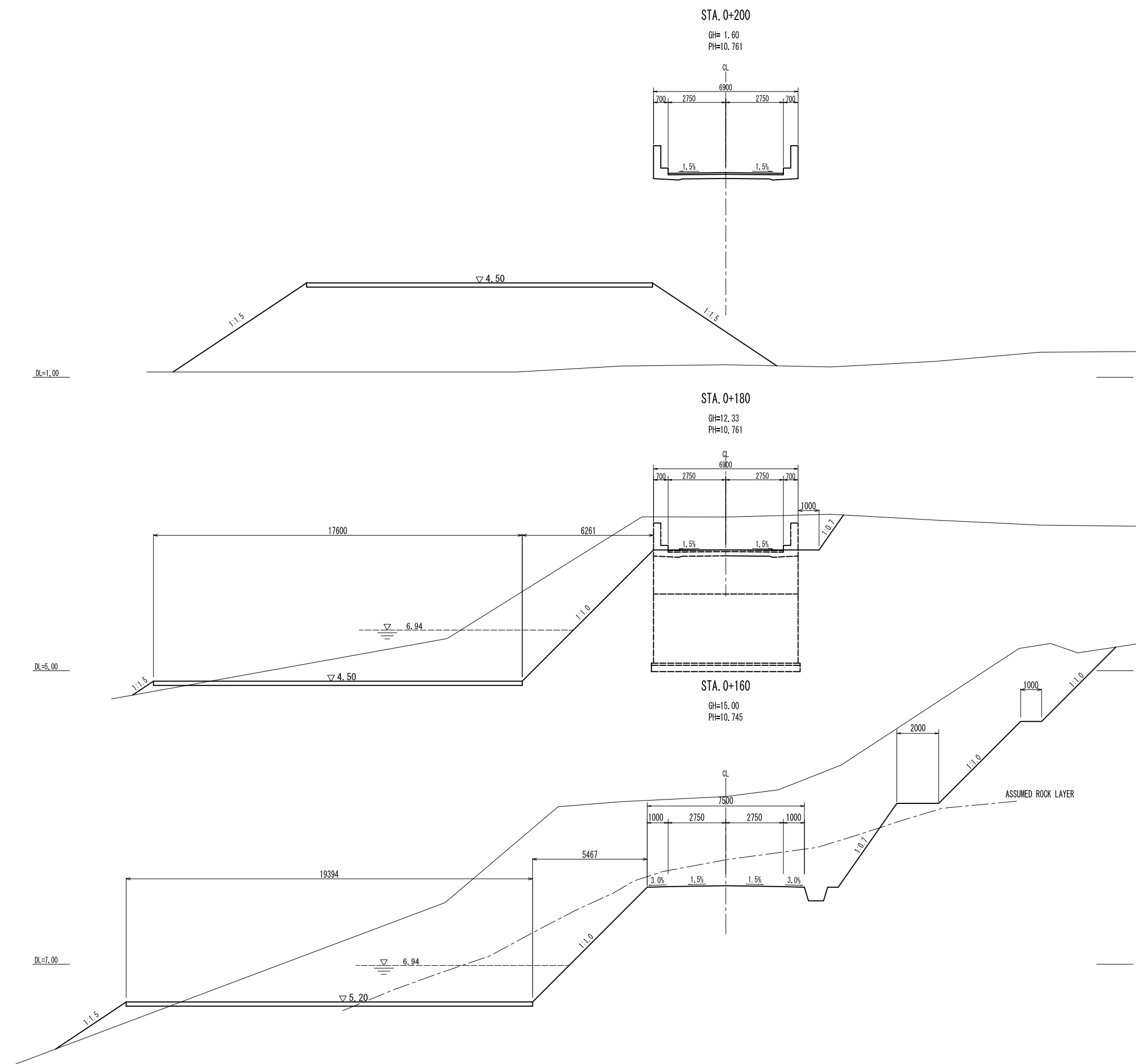
DEPARTMENT OF AGRARIAN REFORM THE REPUBLIC OF THE PHILIPPINES	BASIC DESIGN STUDY ON THE BRIDGE CONSTRUCTION PROJECT FOR EXPANDED AGRARIAN REFORM COMMUNITIES DEVELOPMENT	JAPAN INTERNATIONAL COOPERATION AGENCY CTI ENGINEERING INTERNATIONAL CO., LTD.	TITLE : UMRAY BRIDGE CROSS SECTION OF DETOUR ROAD	SCALE S=1:100	Drawing No.	/
					U25	



DEPARTMENT OF AGRARIAN REFORM THE REPUBLIC OF THE PHILIPPINES	BASIC DESIGN STUDY ON THE BRIDGE CONSTRUCTION PROJECT FOR EXPANDED AGRARIAN REFORM COMMUNITIES DEVELOPMENT	JAPAN INTERNATIONAL COOPERATION AGENCY CTI ENGINEERING INTERNATIONAL CO., LTD.	TITLE : UMIRAY BRIDGE CROSS SECTION FOR TEMPORARY WORKS (1/3)	SCALE S=1:100	Drawing No.	/
					U26	



DEPARTMENT OF AGRARIAN REFORM THE REPUBLIC OF THE PHILIPPINES	BASIC DESIGN STUDY ON THE BRIDGE CONSTRUCTION PROJECT FOR EXPANDED AGRARIAN REFORM COMMUNITIES DEVELOPMENT	JAPAN INTERNATIONAL COOPERATION AGENCY CTI ENGINEERING INTERNATIONAL CO., LTD.	TITLE : UMIRAY BRIDGE CROSS SECTION FOR TEMPORARY WORKS (2/3)	SCALE S=1:100	Drawing No.	/
					U27	



DEPARTMENT OF AGRARIAN REFORM
THE REPUBLIC OF THE PHILIPPINES

BASIC DESIGN STUDY
ON THE BRIDGE CONSTRUCTION PROJECT
FOR EXPANDED AGRARIAN REFORM
COMMUNITIES DEVELOPMENT

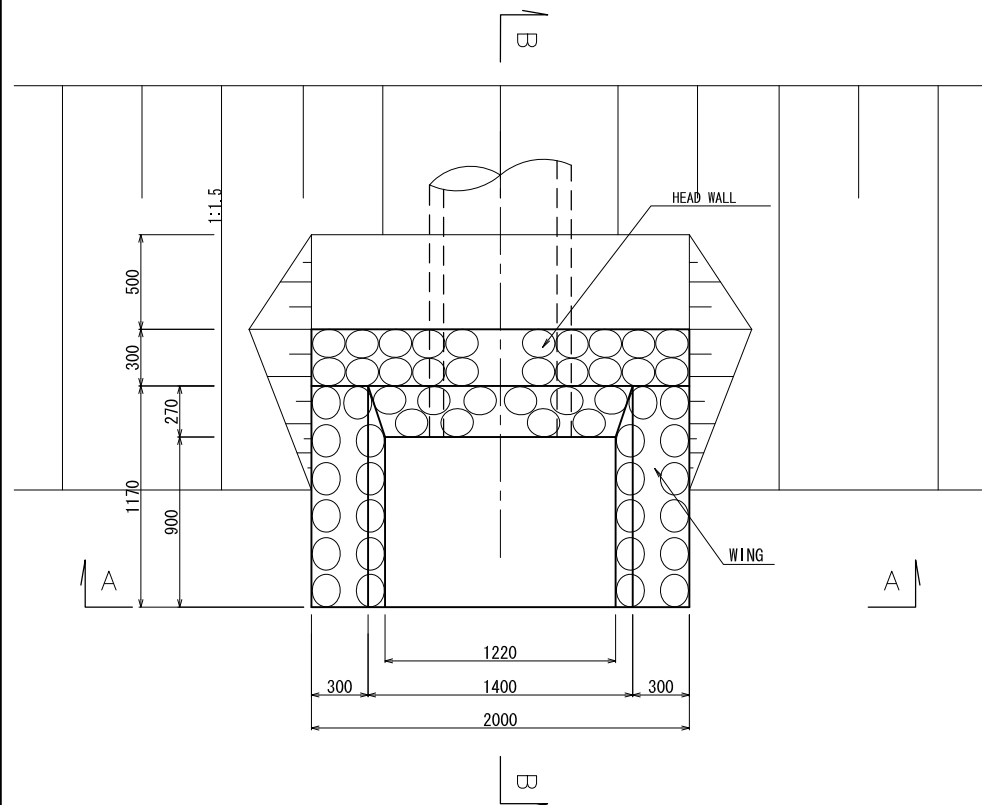
JAPAN INTERNATIONAL COOPERATION AGENCY
CTI ENGINEERING INTERNATIONAL CO., LTD.

TITLE : UMIRAY BRIDGE
CROSS SECTION FOR
TEMPORARY WORKS (3/3)

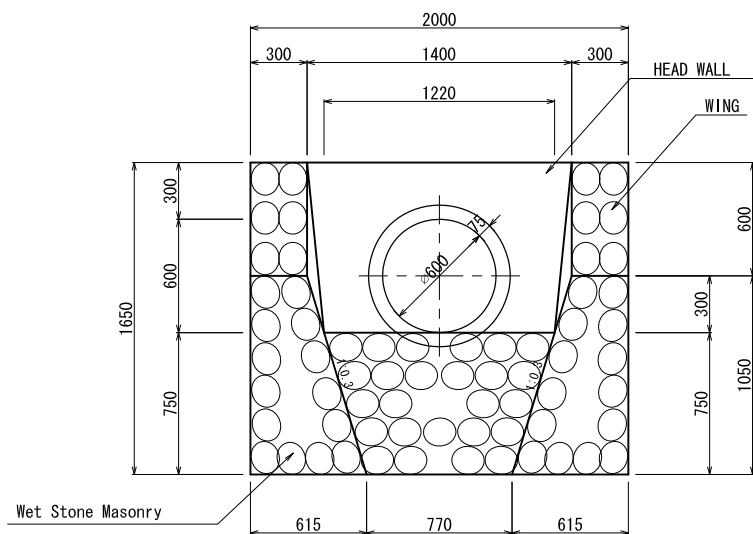
SCALE
S=1:100

Drawing No.
U28

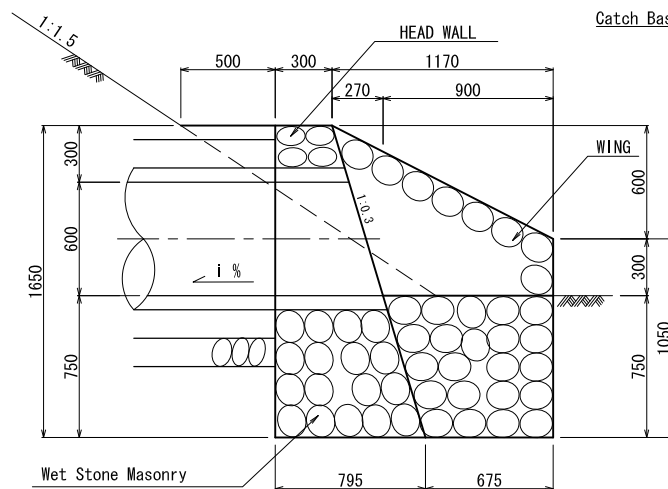
/



PLAN



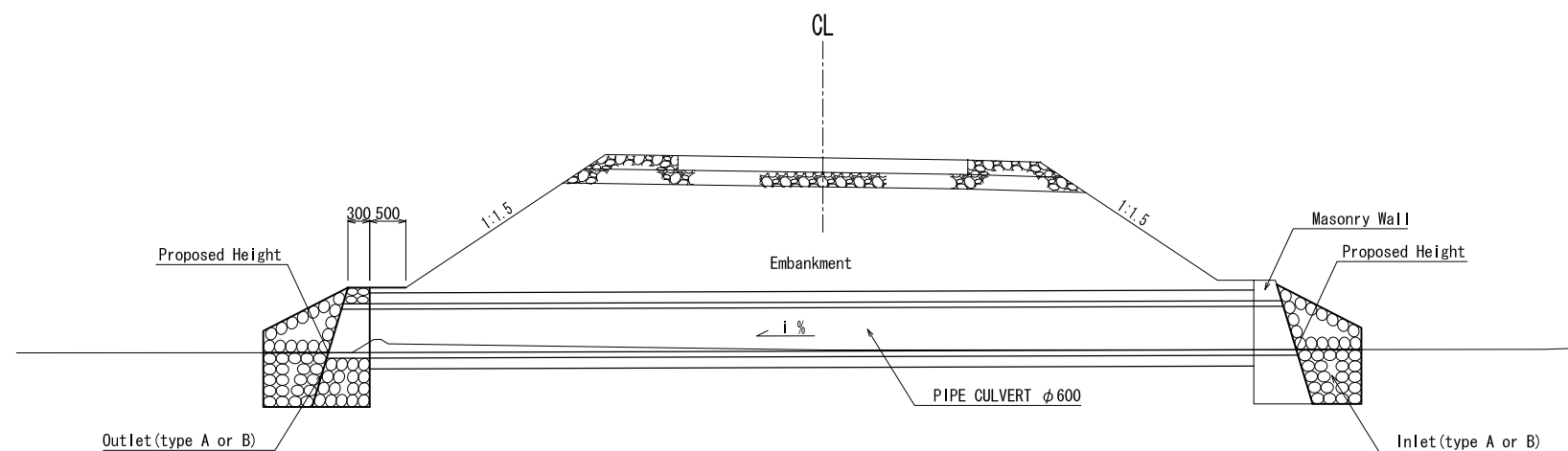
SECTION A-A



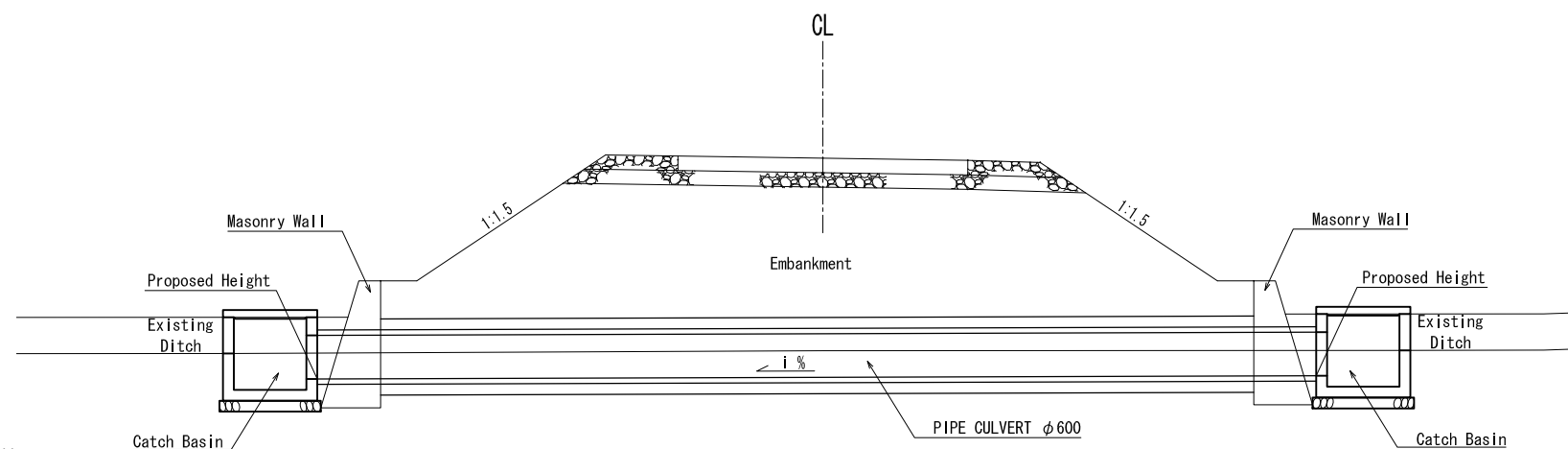
SECTION B-B

INLET/OUTLET (TYPE A) STRUCTURE S=1:20

INLET/OUTLET (TYPE B) (WING ONLY)



CROSS DRAINAGE (INLET/OUTLET) S=1:50

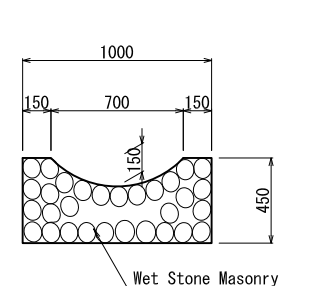


CROSS DRAINAGE (CATCH BASIN) S=1:50

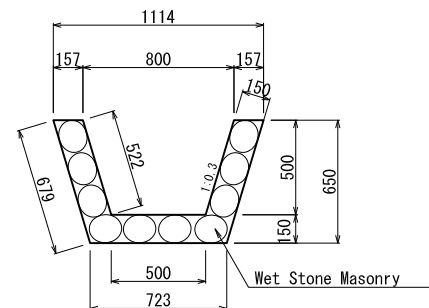
TABLE OF CONTENTS

STATION	INLET		OUTLET		PIPE CULVERT LENGTH (m)
	TYPE	PH	TYPE	PH	
0+40.0	catch basin	7.15	catch basin	6.51	13.00
0+525.0	catch basin	4.10	A	4.00	13.00
0+609.0	catch basin	5.37	catch basin	5.04	13.00
0+643.0	catch basin	4.04	catch basin	4.00	12.50

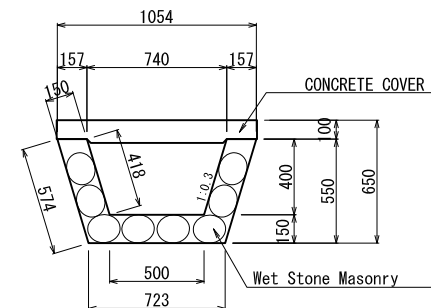
NOTE: PH= PROPOSED HEIGHT



SLOPE DRAIN
S=1:20

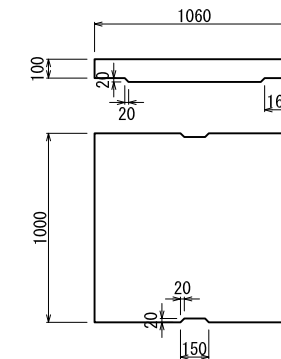


TYPE A

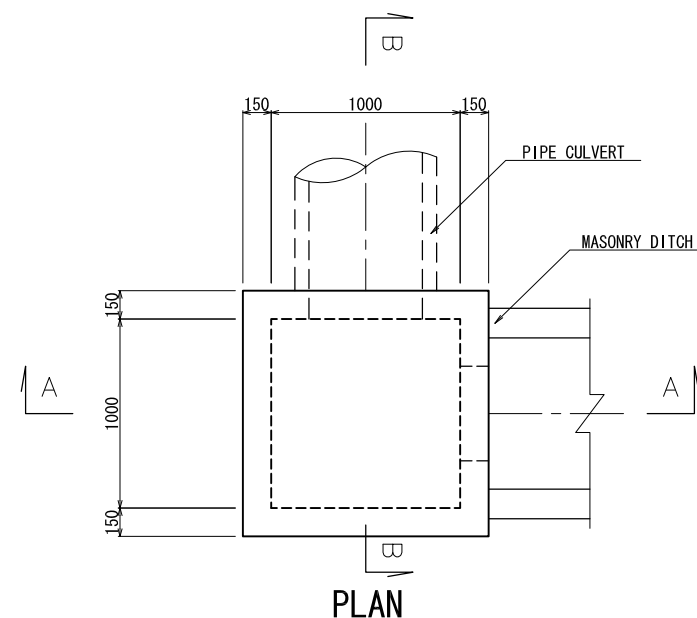


TYPE B

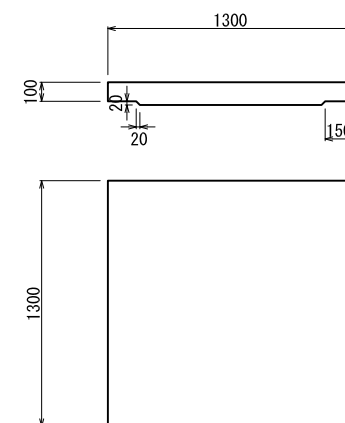
MASONRY DITCH S=1:20



CONCRETE COVER



PLAN



CONCRETE COVER

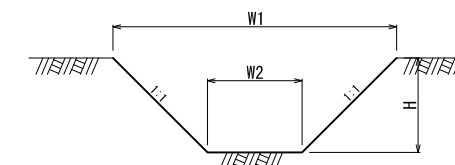
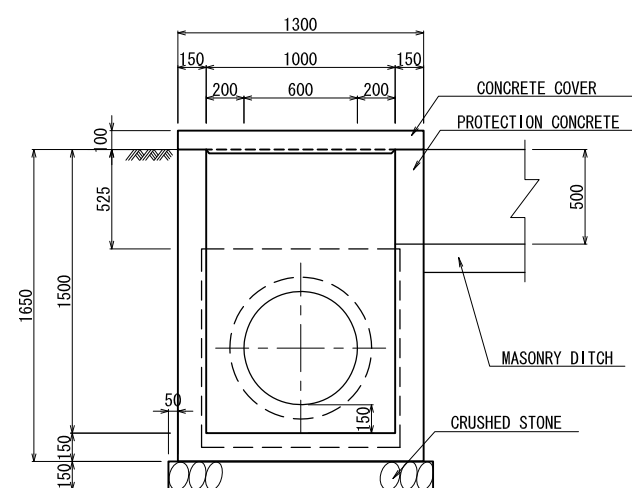


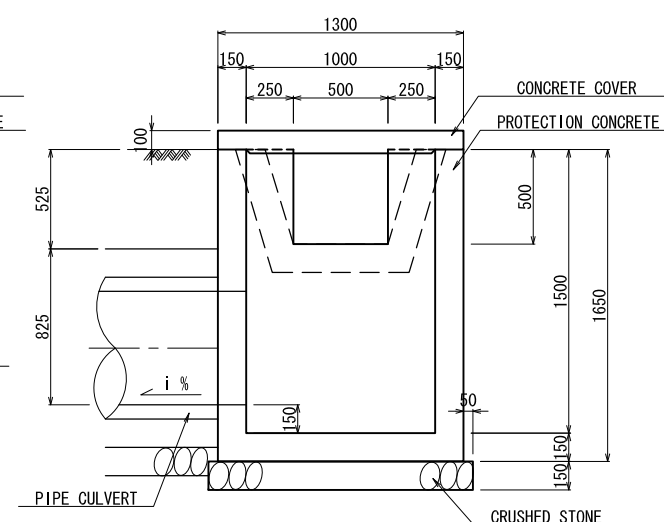
TABLE OF CONTENTS

TYPE	W1	W2	H
TYPE A	900	300	300
TYPE B	1500	500	500
TYPE C	3000	1000	1000

EARTH DITCH S=1:20



SECTION A-A



SECTION B-B

CATCH BASIN (TYPE B) S=1:20

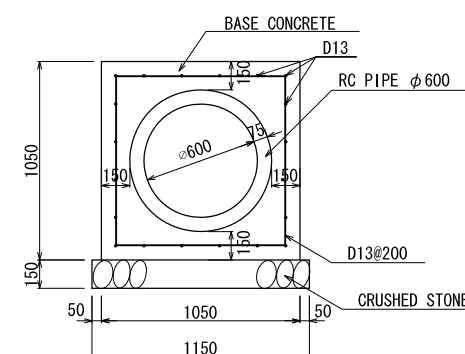
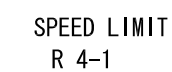
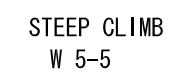
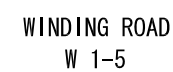
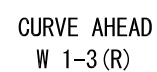
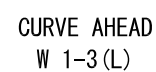
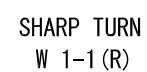
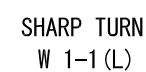


TABLE OF CONTENTS

ITEM	STANDARD	QUANTITY
CONCRETE	σ C k = 18N/mm ²	6.61 m ³
FRAME WORK		20.0 m ²
CRUSHED STONE	RC-40	11.5 m ²
HUME PIPE	D600	10.0 m
BAR	D13	429.84 kg

UNIT: 10m

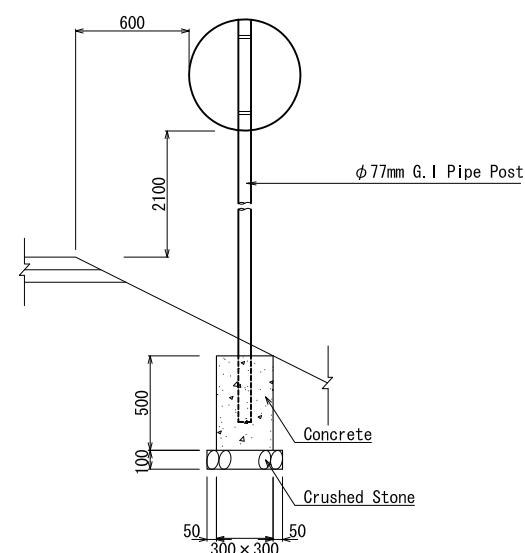
PIPE CULVERT 1:20

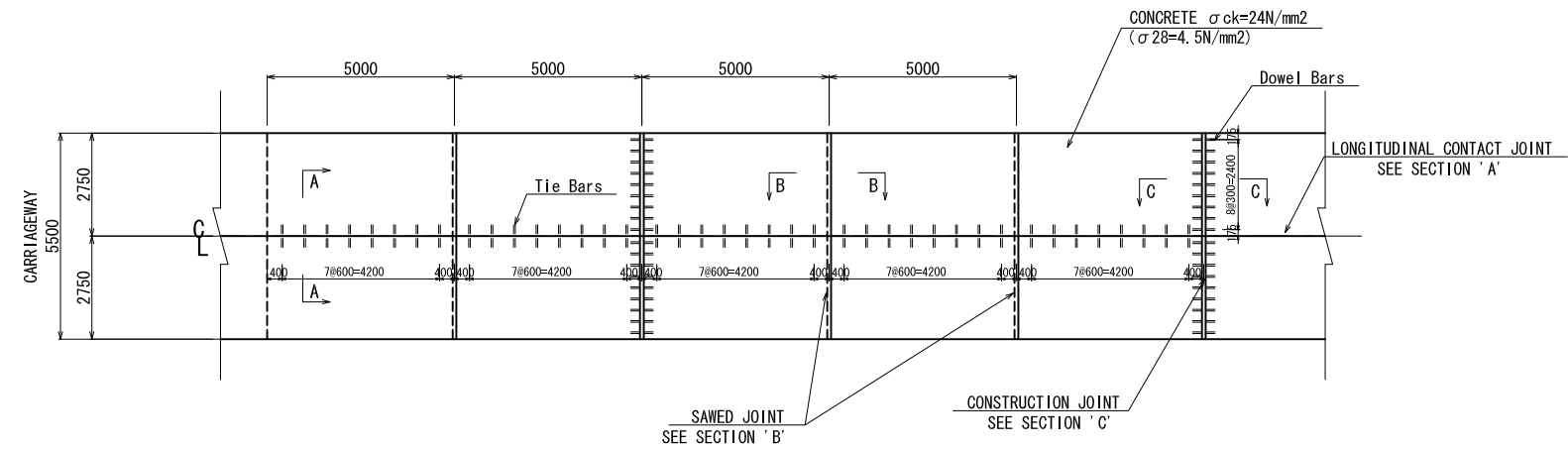


PROHIBITORY SIGN

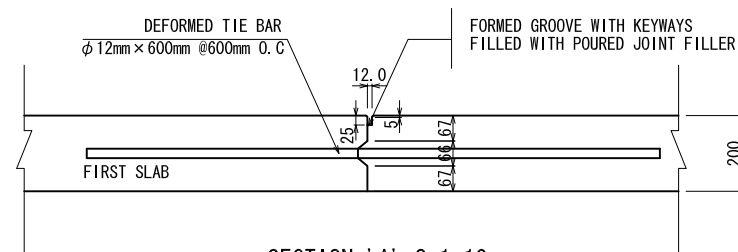


STATION	SHARP TURN		SHARP TURN		CURVE AHEAD		CURVE AHEAD		WINDING ROAD		T JUNCTION		STEEP DESCENT		STEEP CLIMB		STEEP LIMIT		VEHICLE LOAD LIMIT	
	W 1-1(L)		W 1-1(R)		W 1-3(L)		W 1-3(R)		W 1-5		W 2-4		W 5-4		W 5-5		R 4-1		R 6-4	
	L	R	L	R	L	R	L	R	L	R	L	R	L	R	L	R	L	R	L	R
0+20.0										1						1		1		
0+146.0		1																		
0+537.5														1						
0+523.0						1														
0+80.0														1						
0+141.0									1											
0+146.0			1																	
0+640.0							1					1			1		1			
SUBTOTAL	0	1	1	0	0	1	1	0	1	1	0	1	1	1	1	1	1	1	0	
SUM OF L & R	1		1		1		1		2		1		2		2		2		0	
TOTAL	13																			

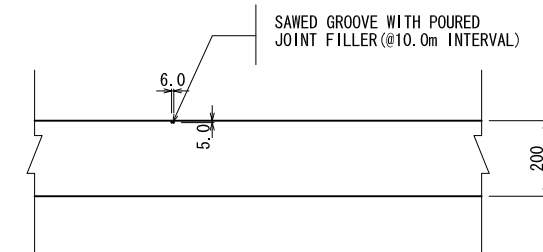




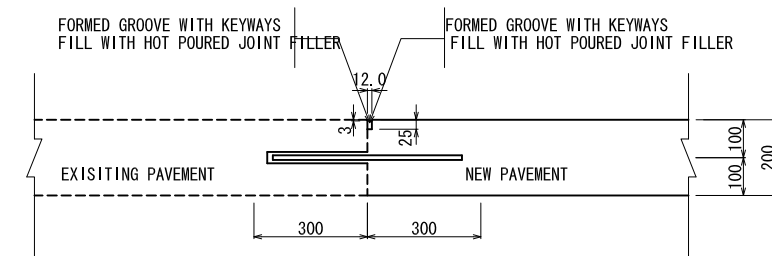
PLAN S=1:100



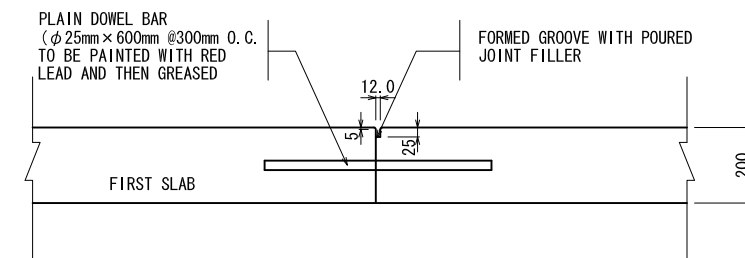
SECTION 'A' S=1:10
(CONTACT JOINT)



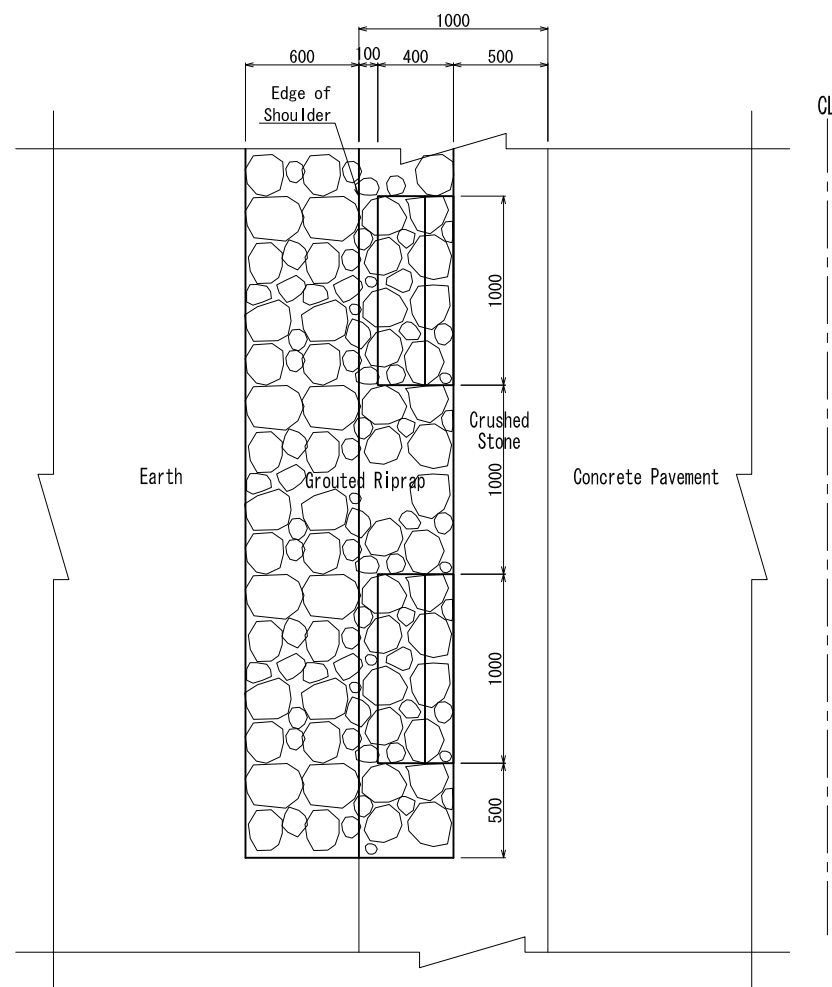
SECTION 'B' S=1:10
(CONTRACTION JOINT)



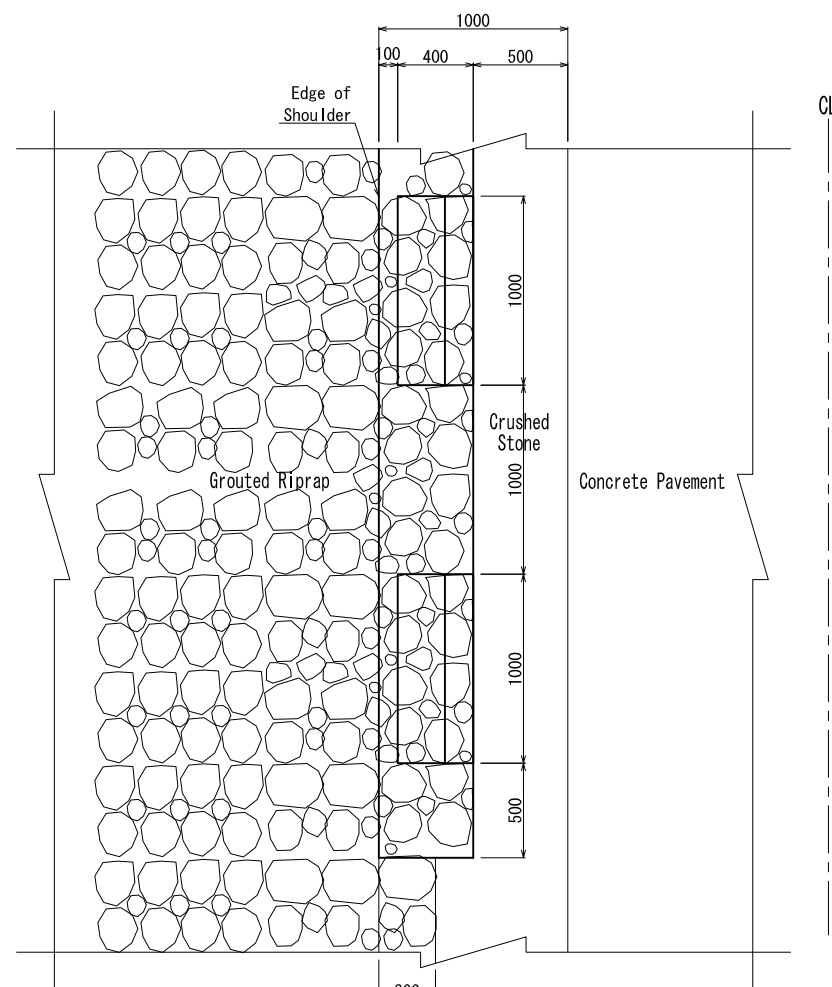
DETAIL OF EXISTING PCCP CONNECTION S=1:10



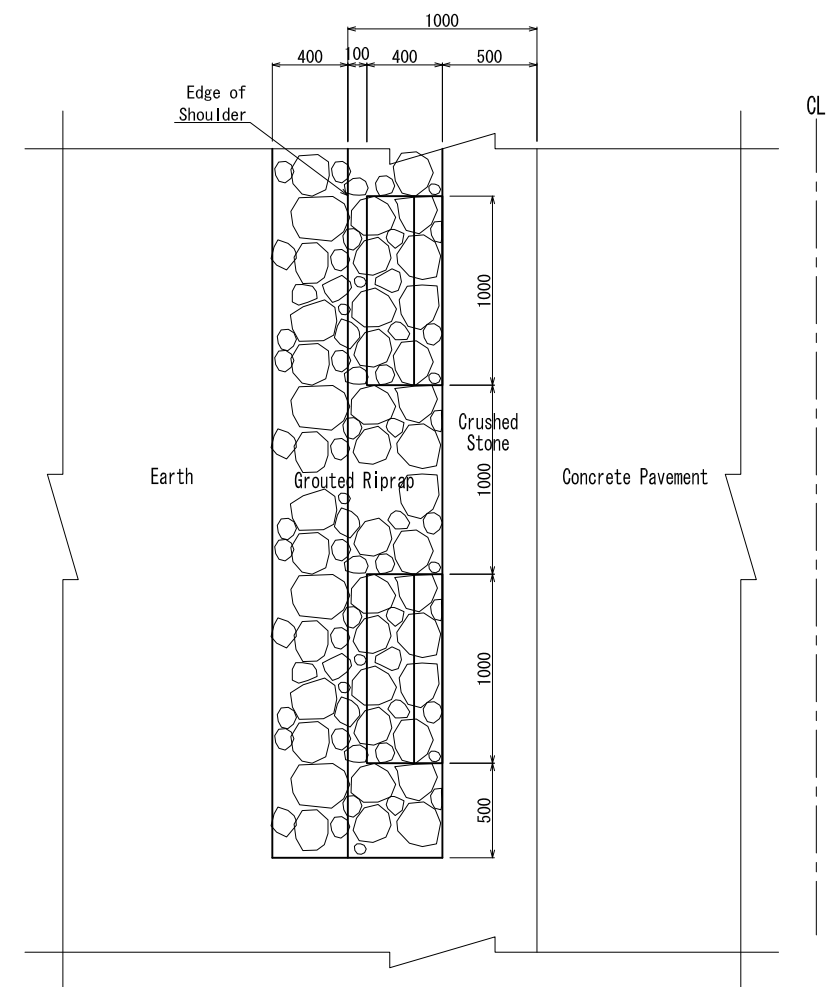
SECTION 'C' S=1:10
(CONSTRUCTION JOINT)



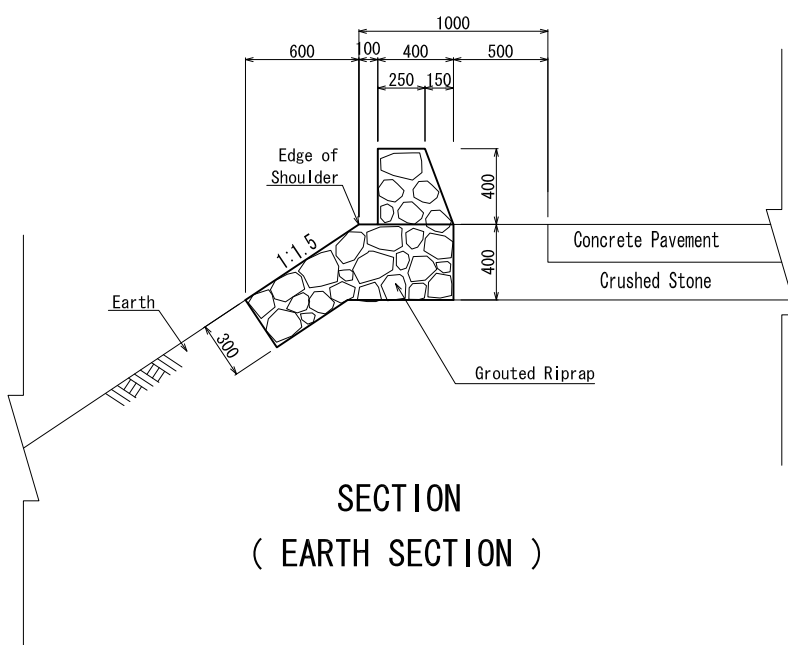
PLAN
(EARTH SECTION)



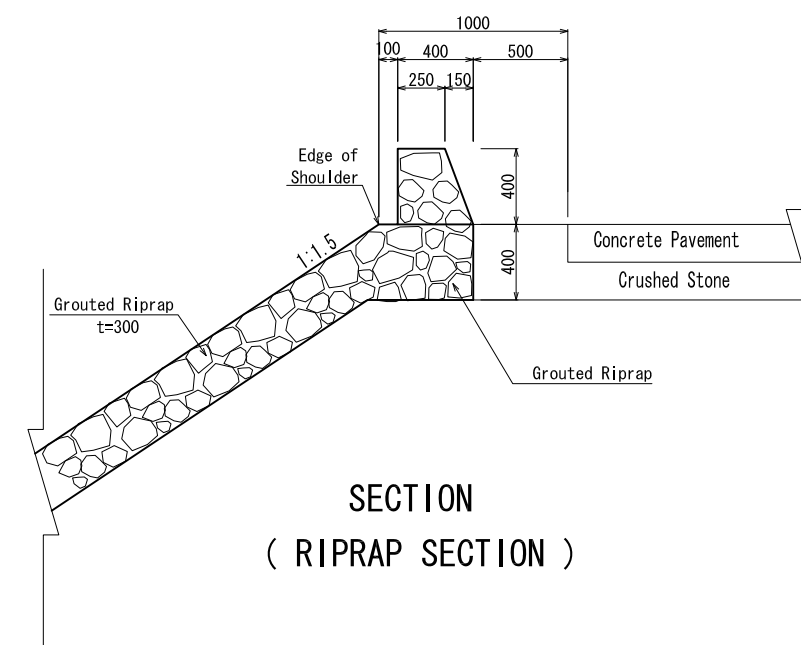
PLAN
(RIPRAP SECTION)



PLAN

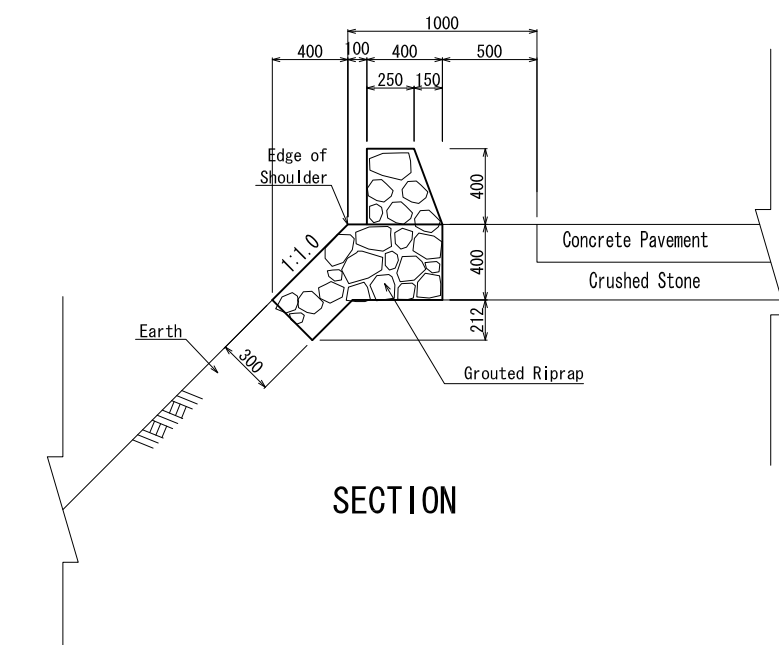


SECTION
(EARTH SECTION)



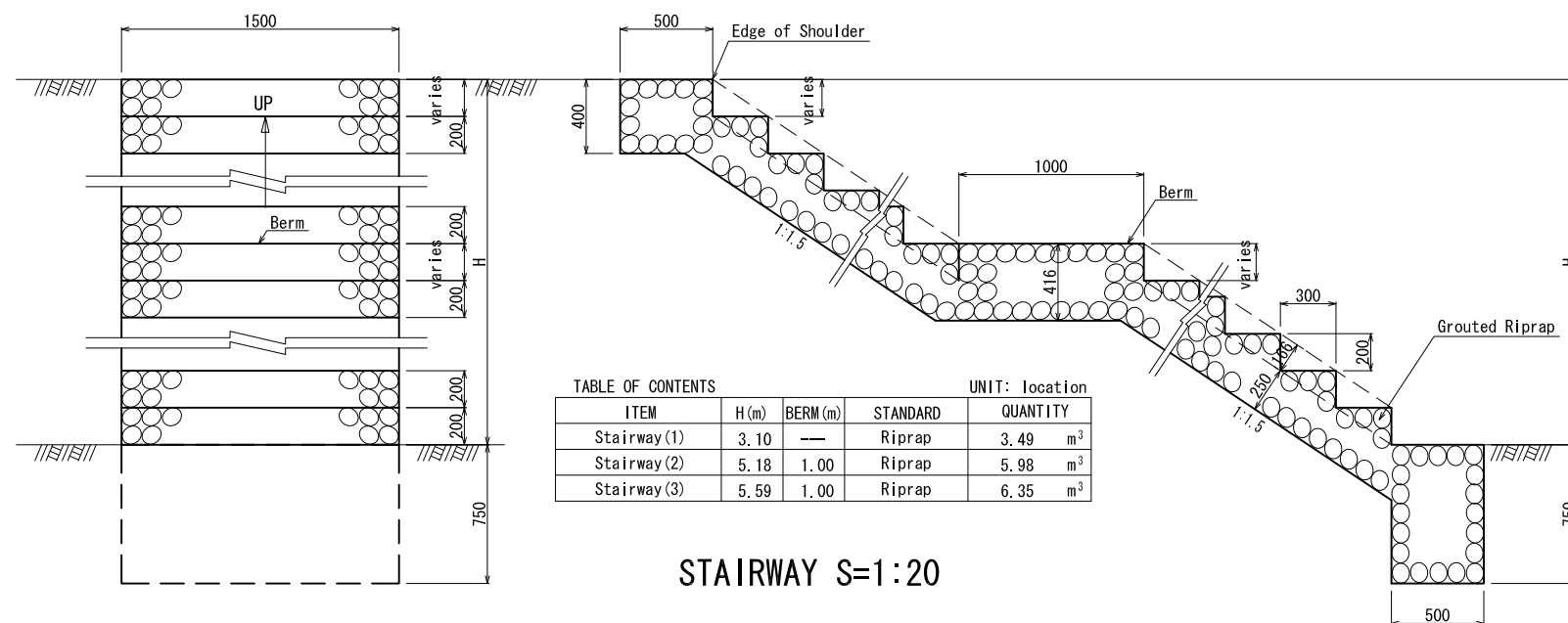
SECTION
(RIPRAP SECTION)

RIPRAP GUARDBLOCK (TYPE A) S=1:20

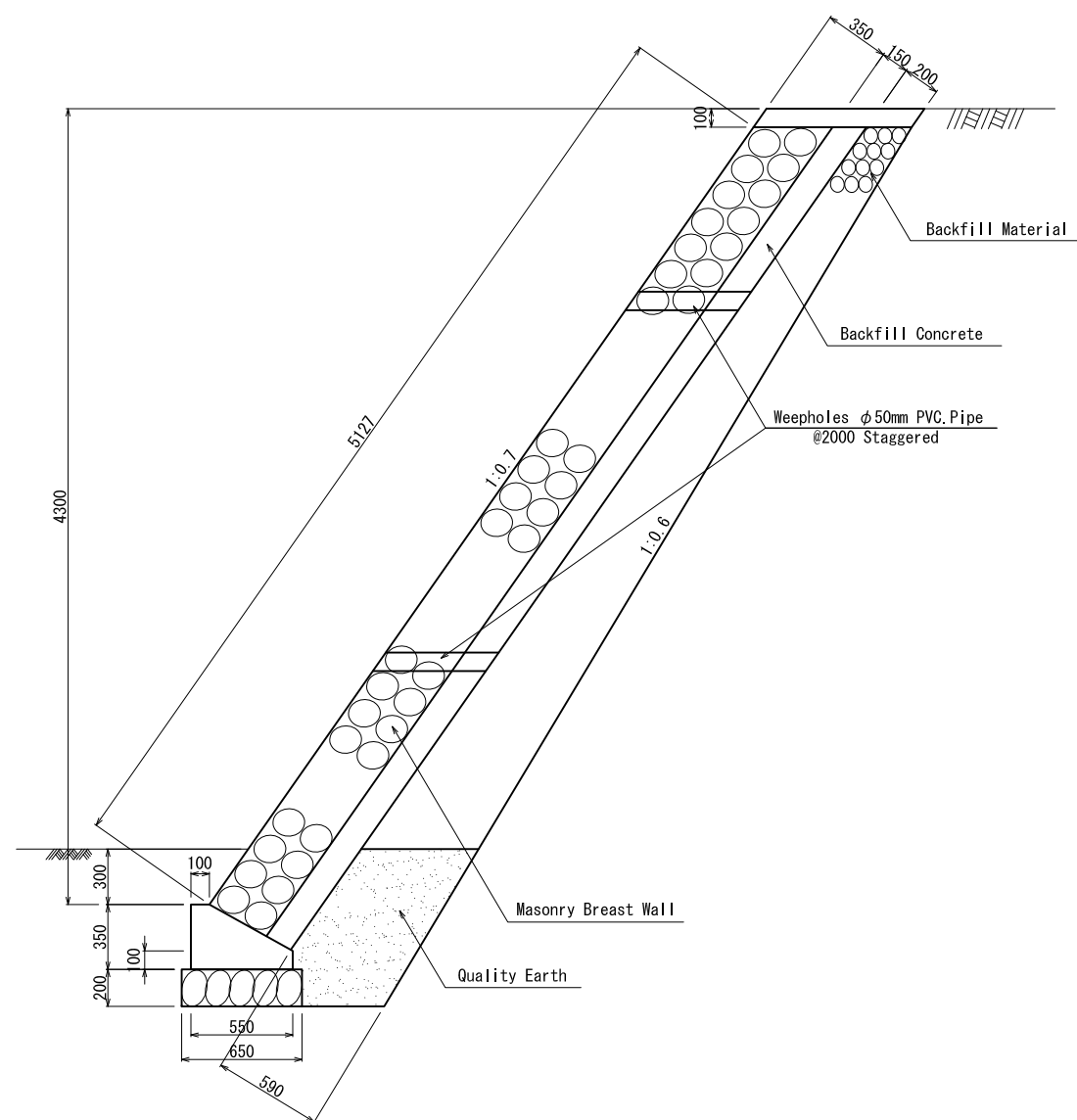


SECTION

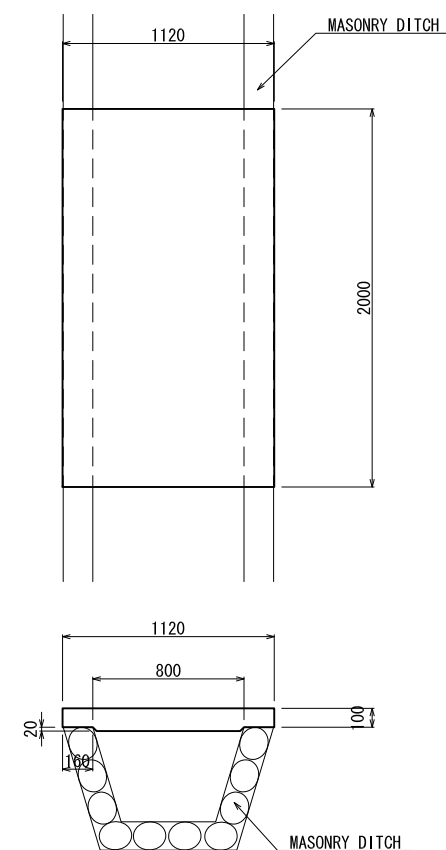
RIPRAP GUARDBLOCK (TYPE B) S=1:20



STAIRWAY S=1:20



MASONRY WALL (TYPE B) S=1:20



CONCRETE SLAB
S=1:20