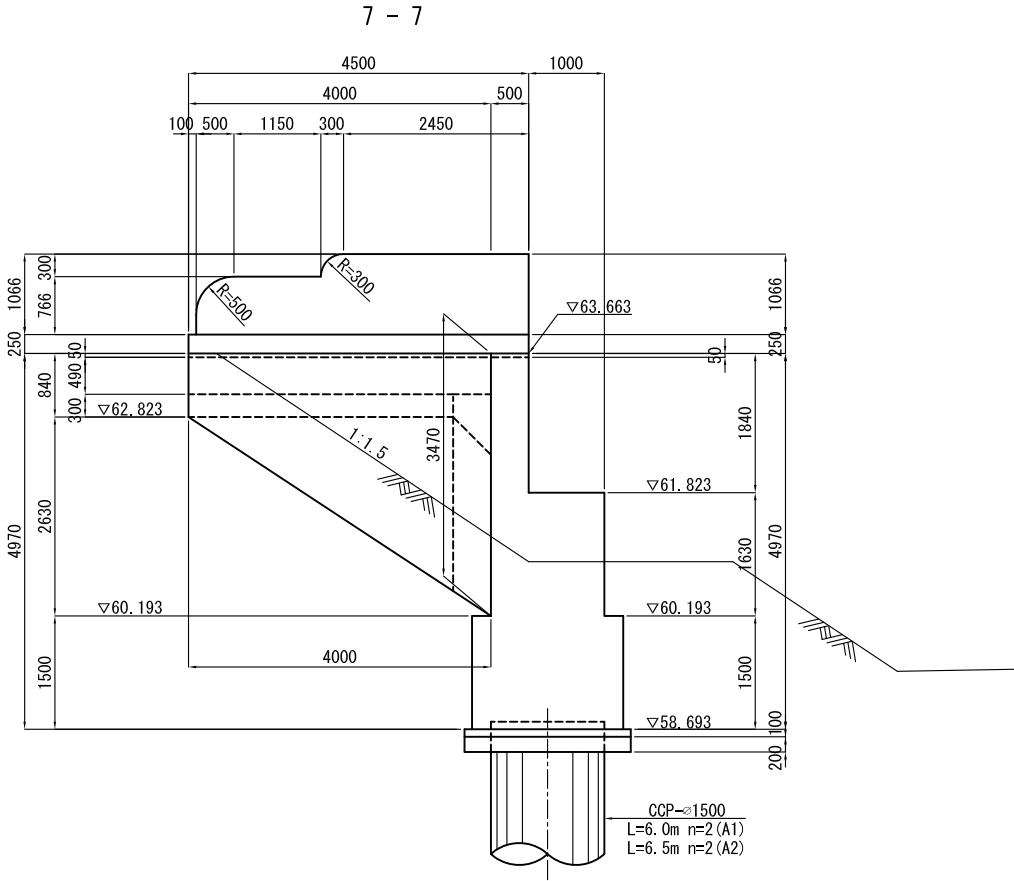
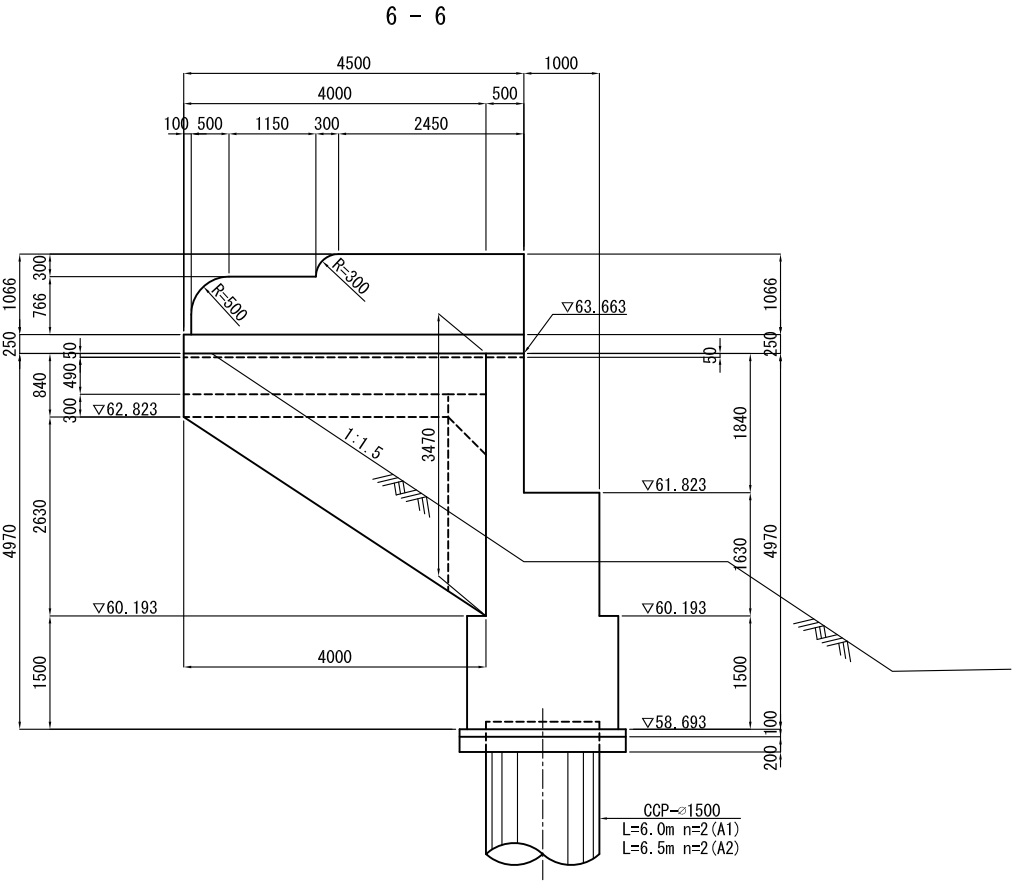
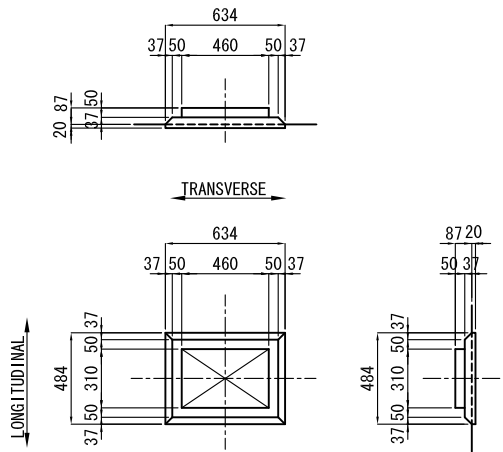


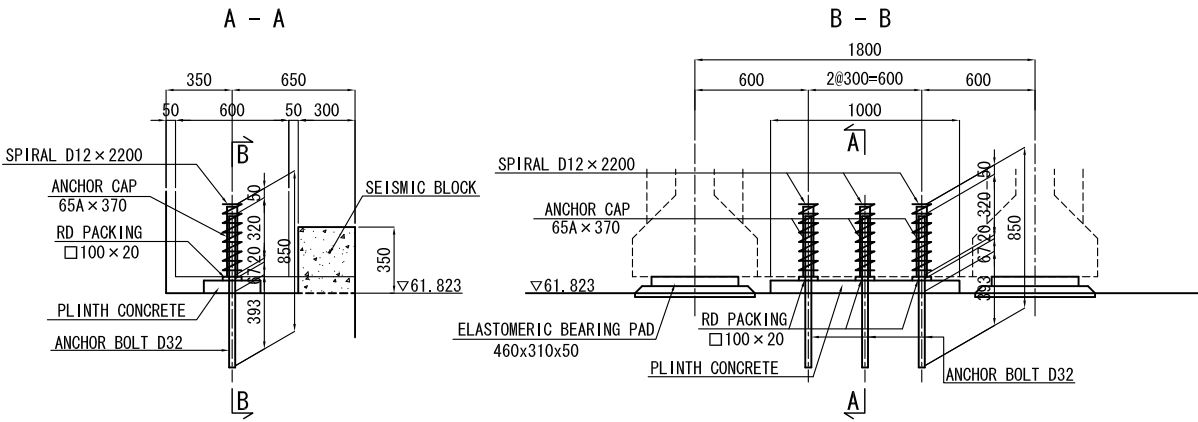
STRUCTURAL DRAWING OF A1, A2 ABUTMENT (2) SCALE 1:50



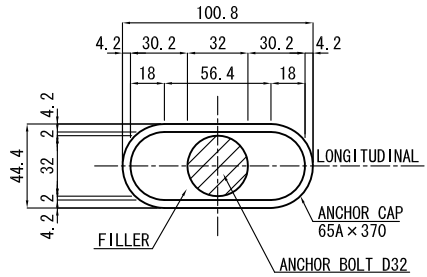
DETAILS SCALE 1:20



DETAILS SCALE 1:20

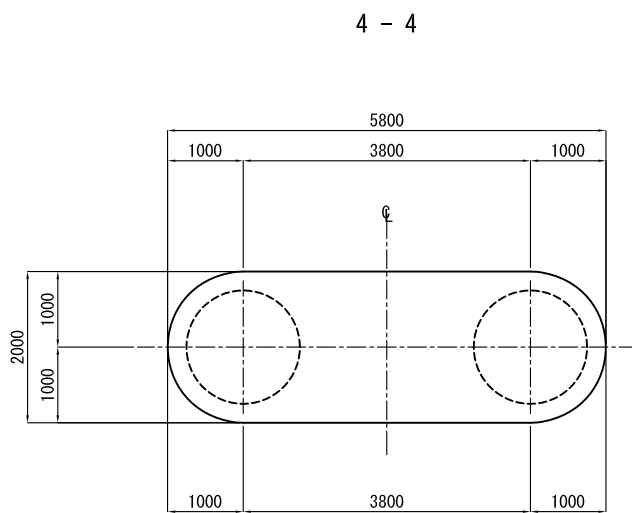
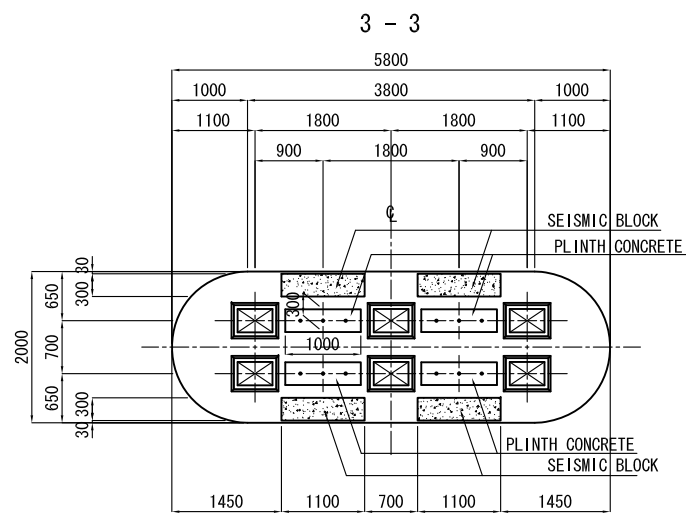
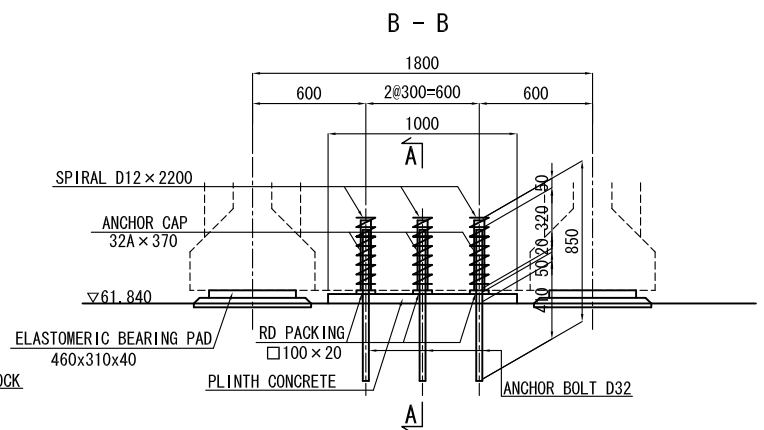
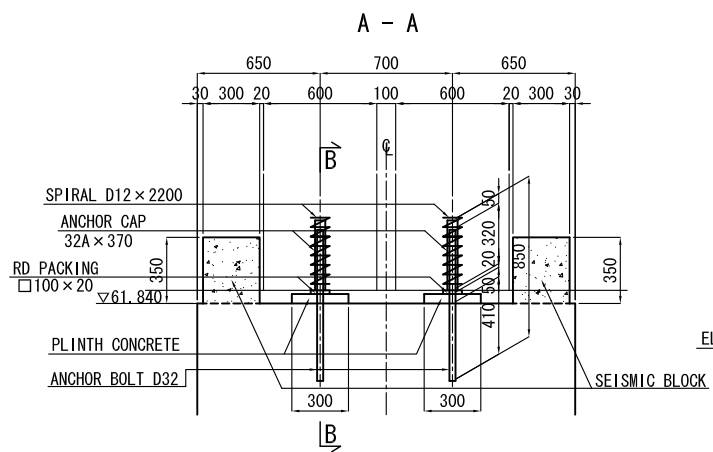
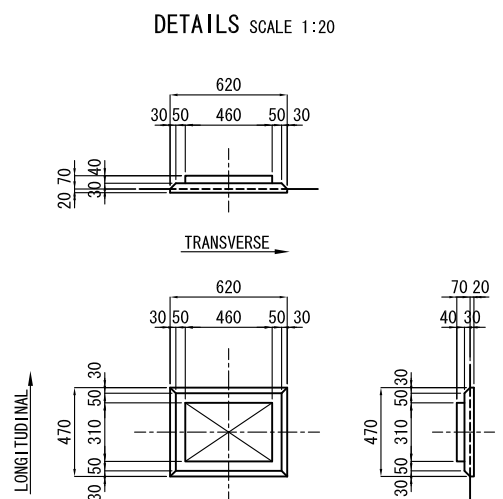
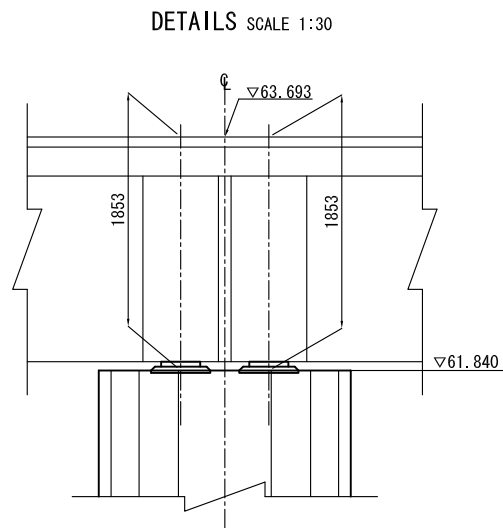
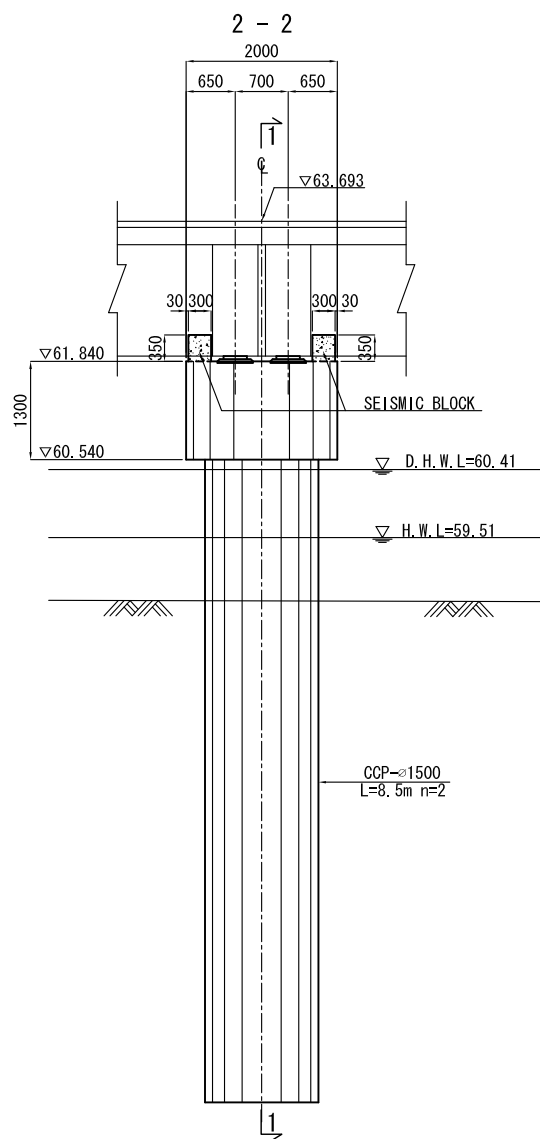
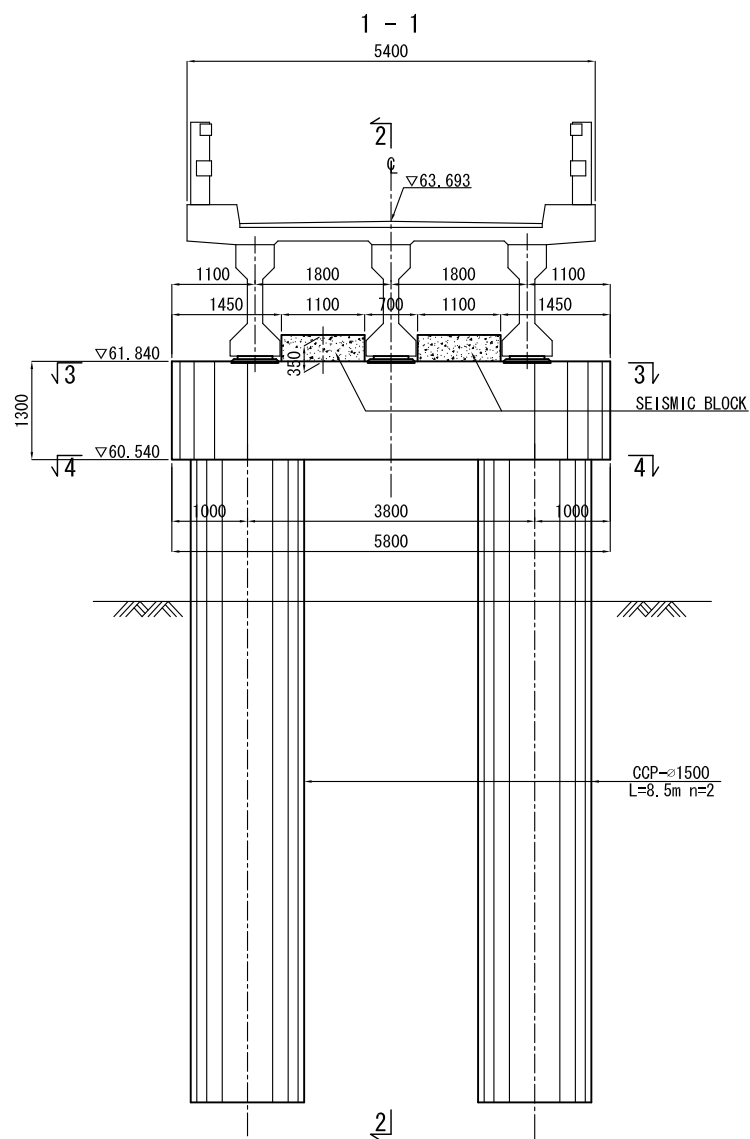


ANCHOR CAP SCALE 1:2
Movable

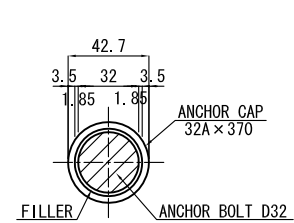


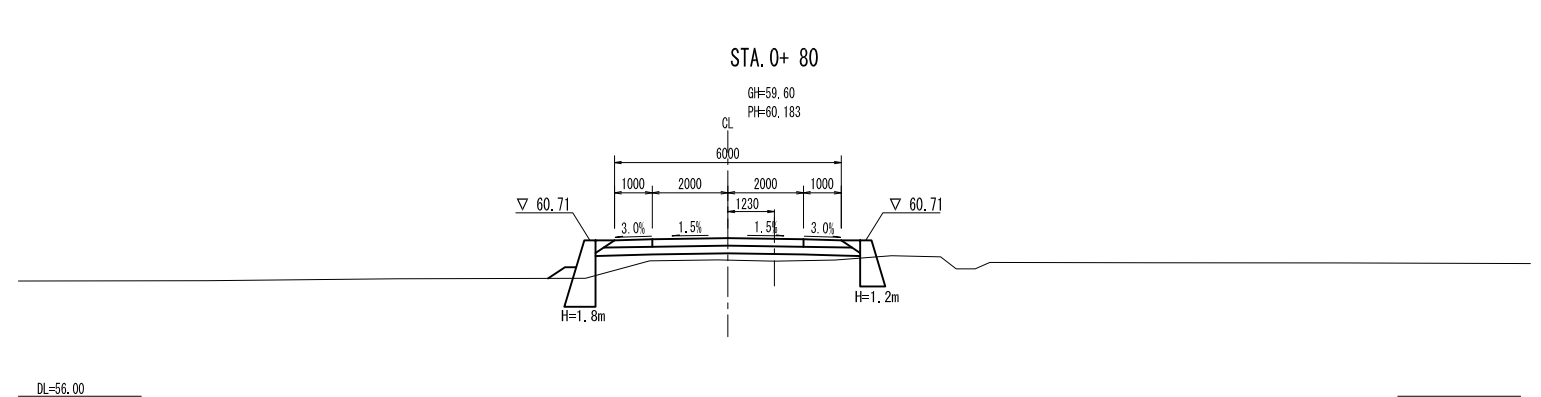
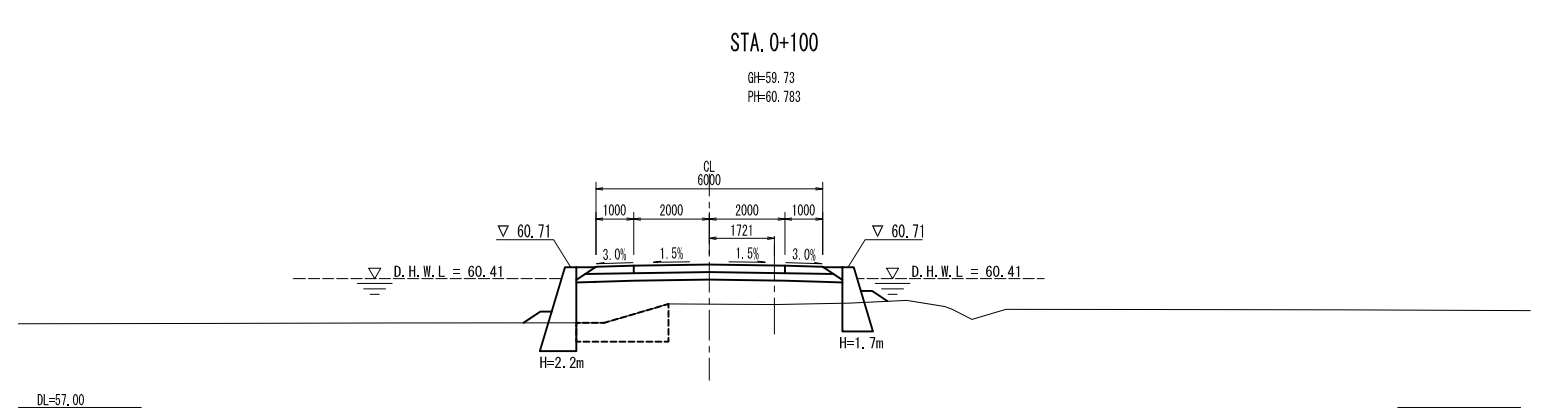
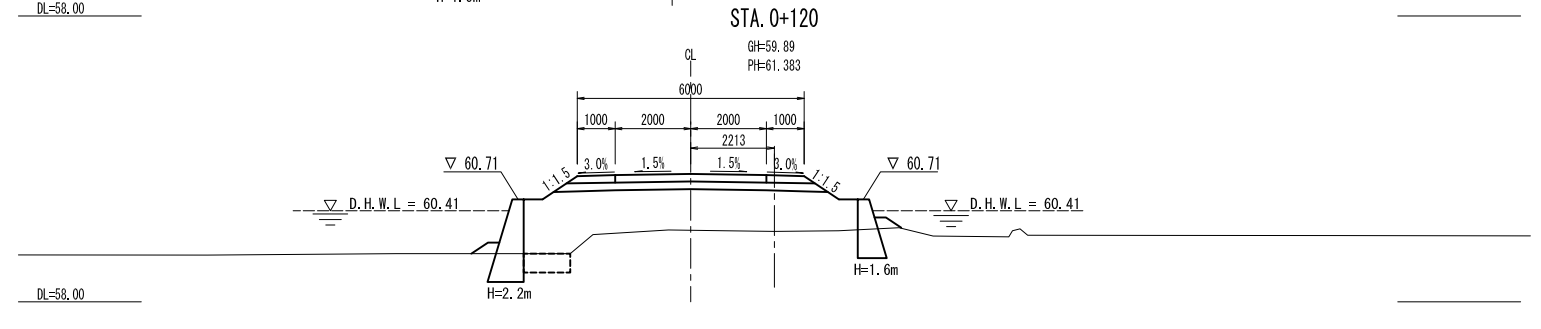
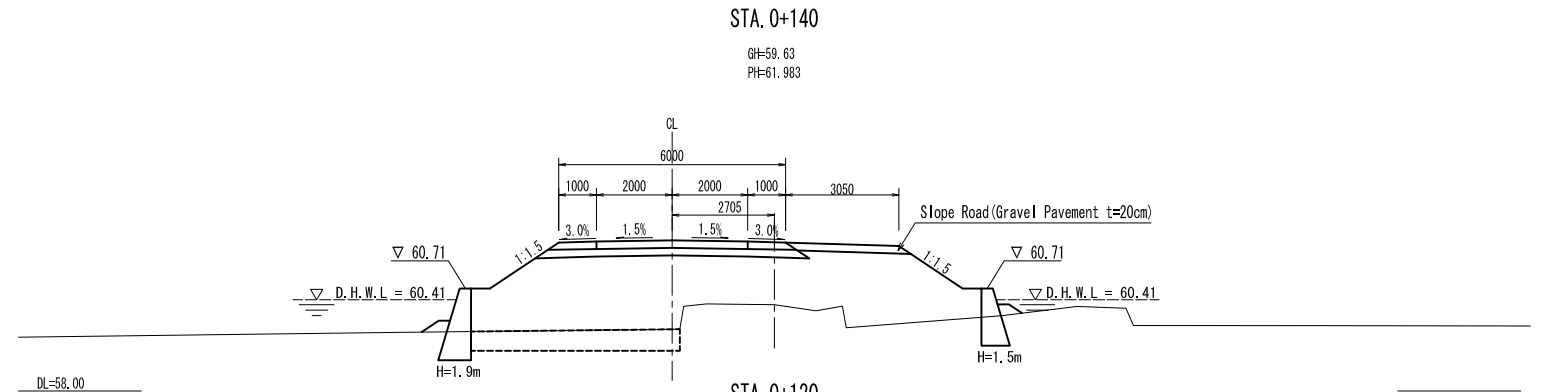
STRUCTURAL DRAWING OF P1~P3 BRIDGE PIER

SCALE 1:50

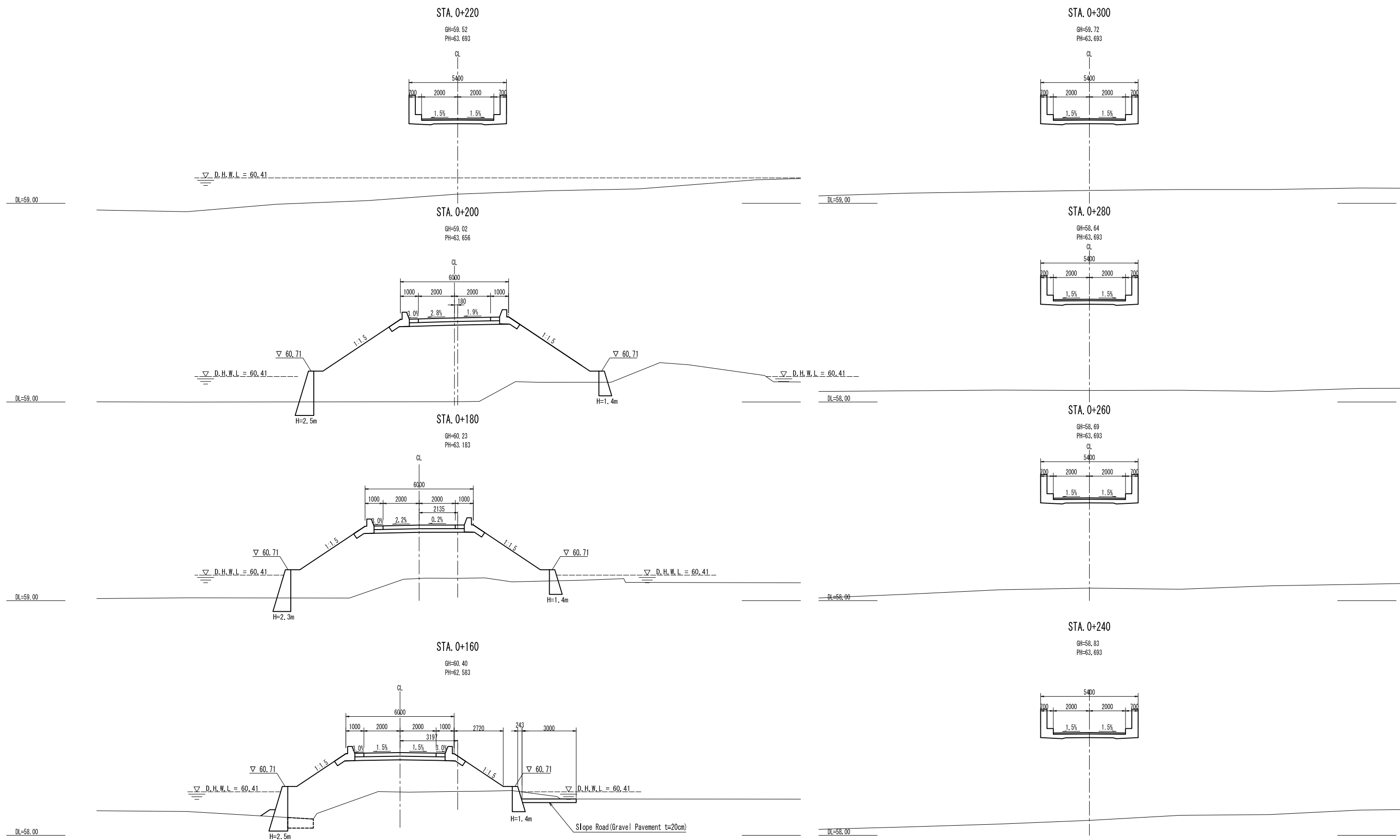


ANCHOR CAP SCALE 1:2





DEPARTMENT OF AGRARIAN REFORM THE REPUBLIC OF THE PHILIPPINES	BASIC DESIGN STUDY ON THE BRIDGE CONSTRUCTION PROJECT FOR EXPANDED AGRARIAN REFORM COMMUNITIES DEVELOPMENT	JAPAN INTERNATIONAL COOPERATION AGENCY CTI ENGINEERING INTERNATIONAL CO., LTD.	TITLE : BAZAL BRIDGE ROAD CROSS SECTION (1/4)	SCALE S=1:100	Drawing No.	/
					B13	



DEPARTMENT OF AGRARIAN REFORM
THE REPUBLIC OF THE PHILIPPINES

BASIC DESIGN STUDY
ON THE BRIDGE CONSTRUCTION PROJECT
FOR EXPANDED AGRARIAN REFORM
COMMUNITIES DEVELOPMENT

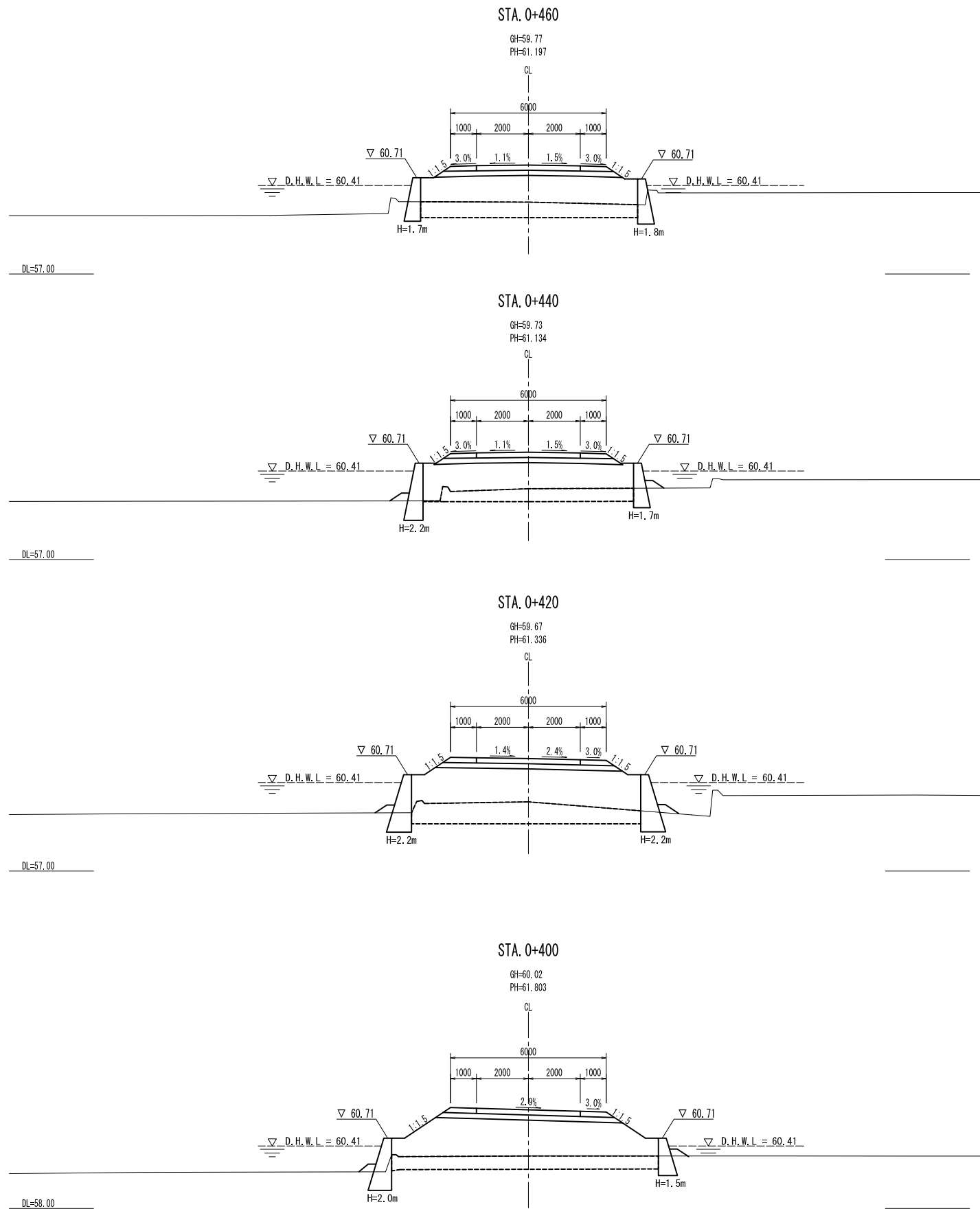
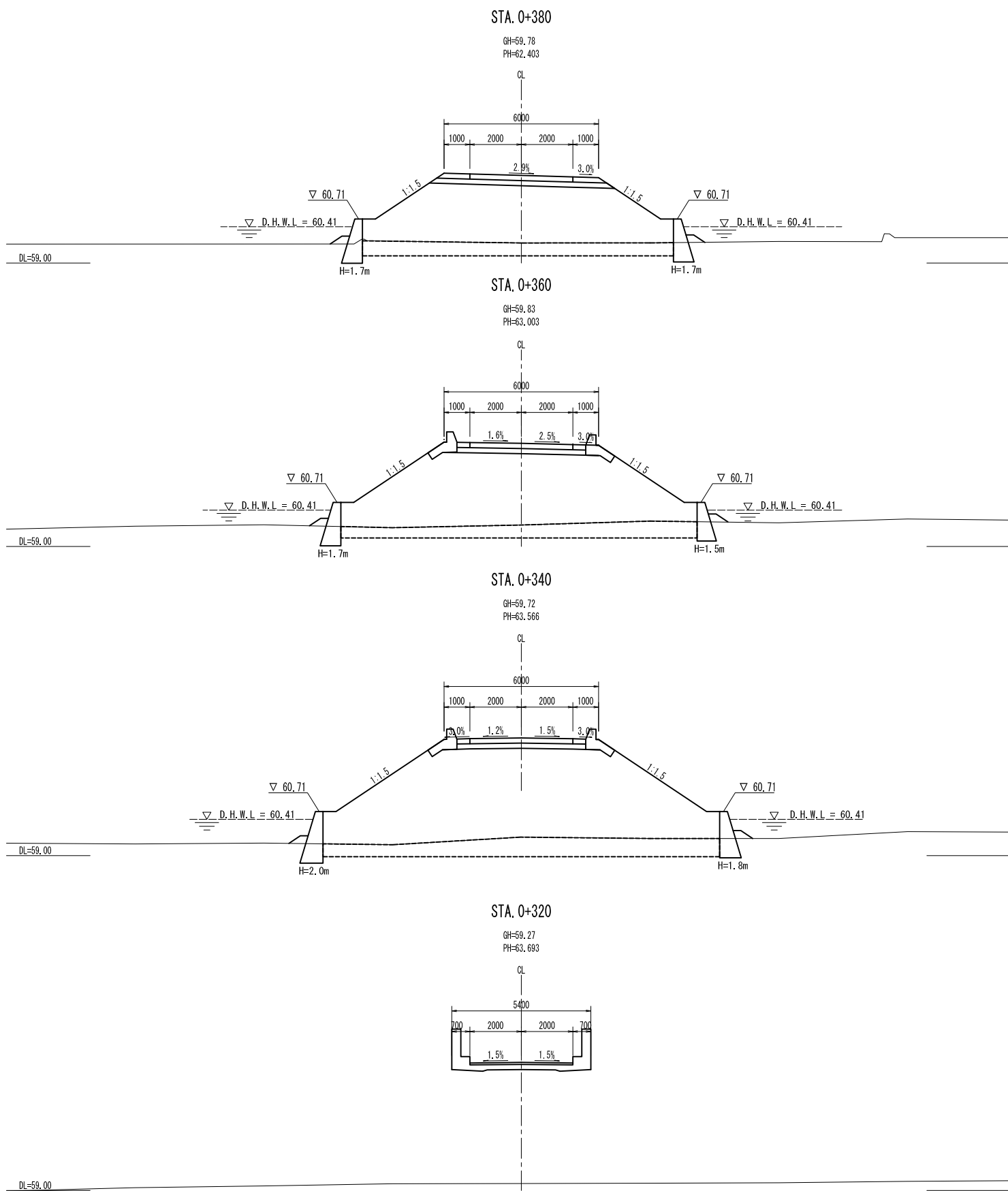
JAPAN INTERNATIONAL COOPERATION AGENCY
CTI ENGINEERING INTERNATIONAL CO., LTD.

TITLE : BAZAL BRIDGE
ROAD CROSS SECTION (2/4)

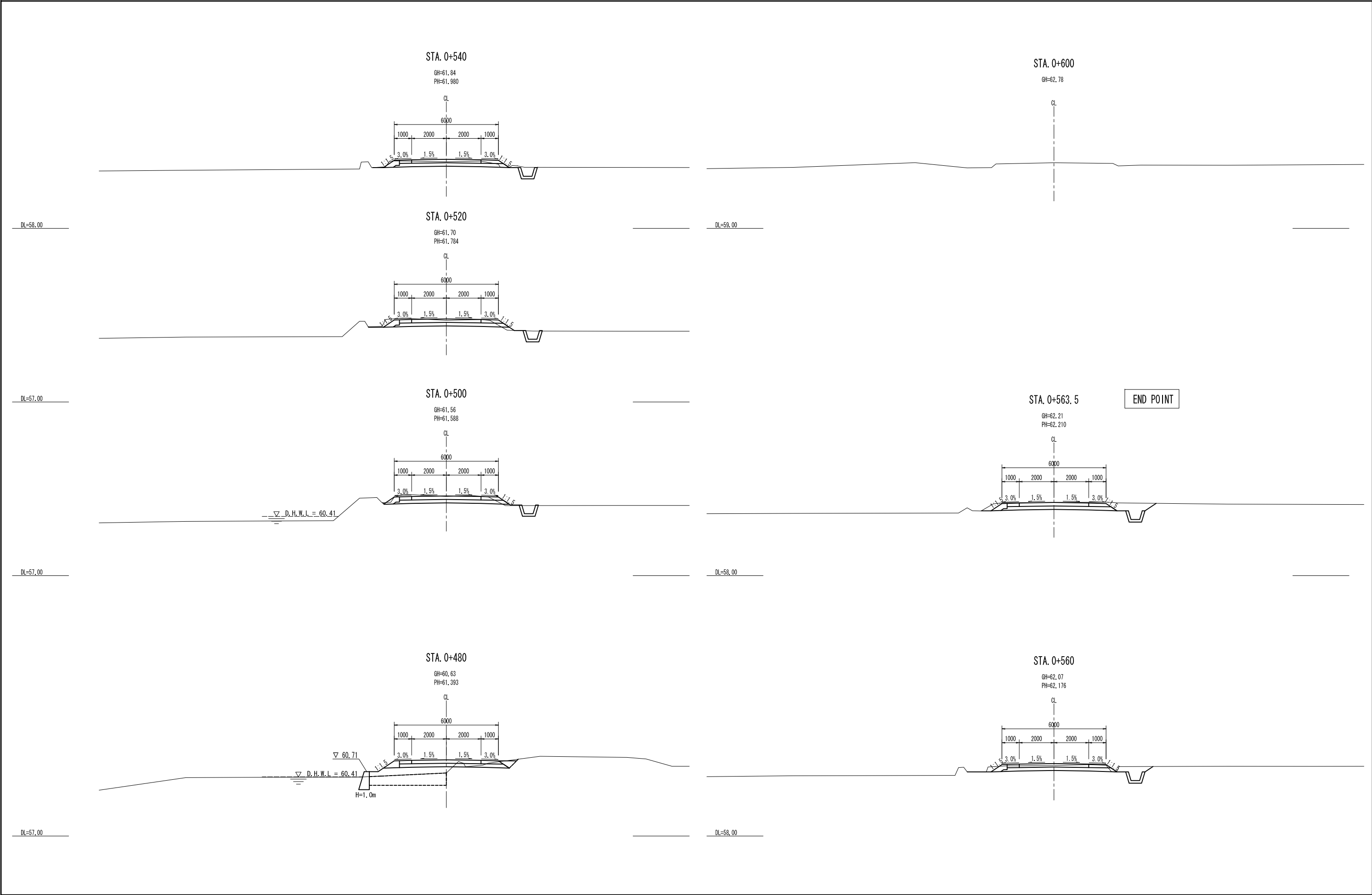
SCALE
S=1:100

Drawing No.
B14

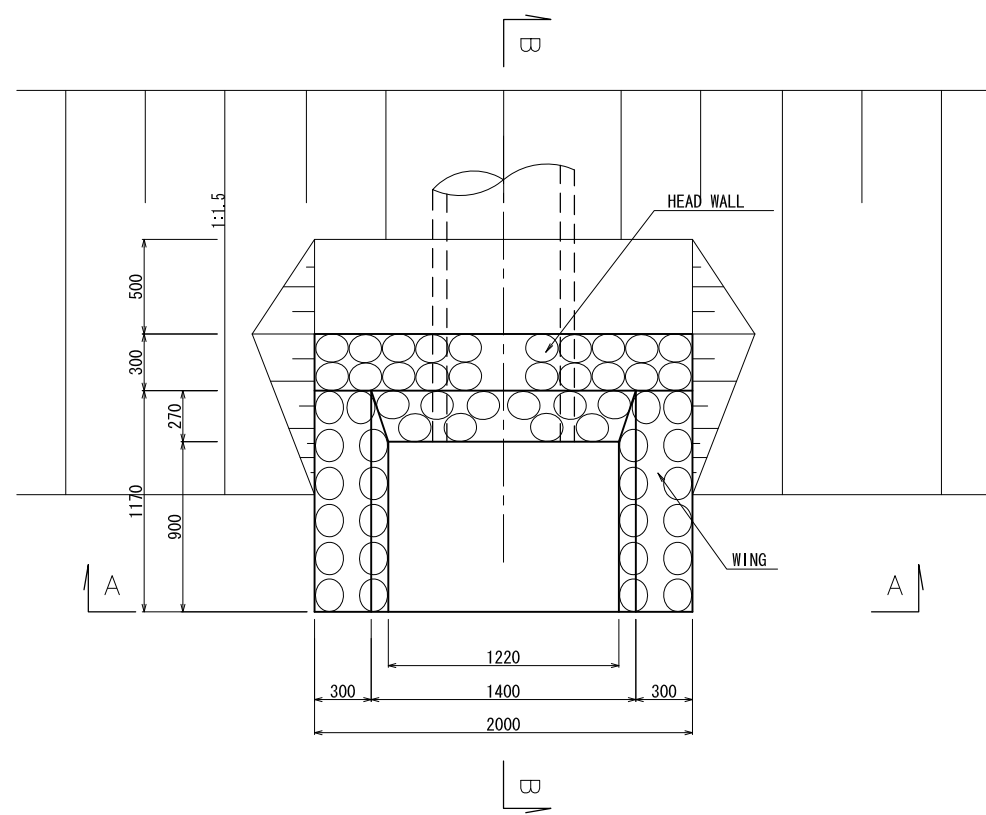
✓



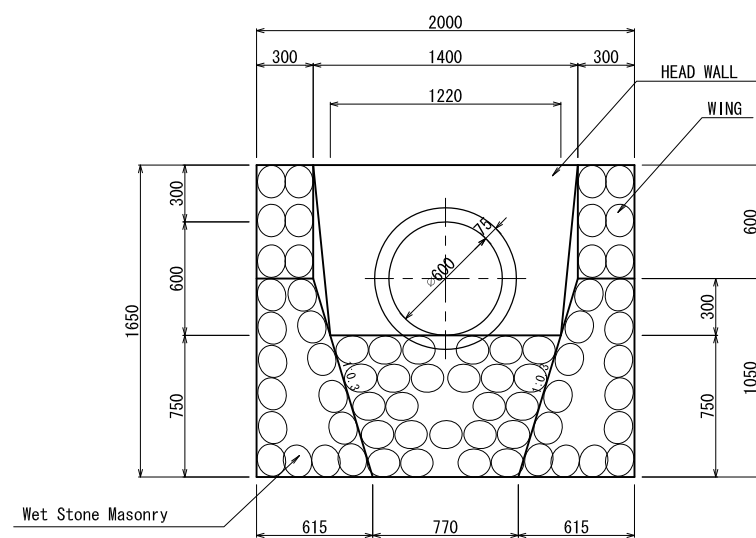
DEPARTMENT OF AGRARIAN REFORM THE REPUBLIC OF THE PHILIPPINES	BASIC DESIGN STUDY ON THE BRIDGE CONSTRUCTION PROJECT FOR EXPANDED AGRARIAN REFORM COMMUNITIES DEVELOPMENT	JAPAN INTERNATIONAL COOPERATION AGENCY CTI ENGINEERING INTERNATIONAL CO., LTD.	TITLE : BAZAL BRIDGE ROAD CROSS SECTION (3/4)	SCALE S=1:100	Drawing No.	/
					B15	



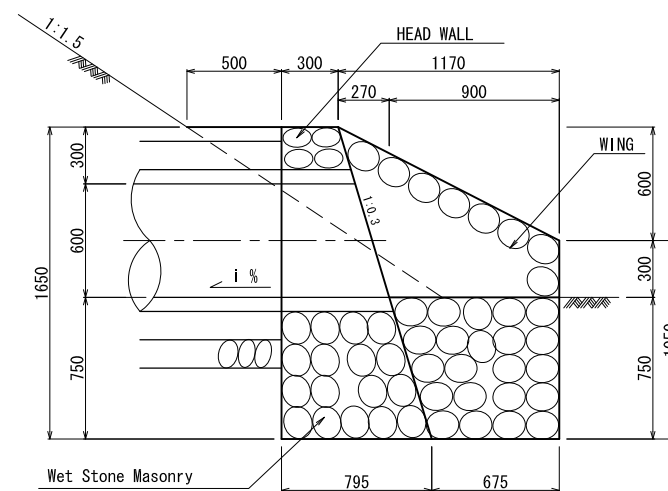
DEPARTMENT OF AGRARIAN REFORM THE REPUBLIC OF THE PHILIPPINES	BASIC DESIGN STUDY ON THE BRIDGE CONSTRUCTION PROJECT FOR EXPANDED AGRARIAN REFORM COMMUNITIES DEVELOPMENT	JAPAN INTERNATIONAL COOPERATION AGENCY CTI ENGINEERING INTERNATIONAL CO., LTD.	TITLE : BAZAL BRIDGE ROAD CROSS SECTION (4/4)	SCALE S=1:100	Drawing No.	/
					B16	



PLAN



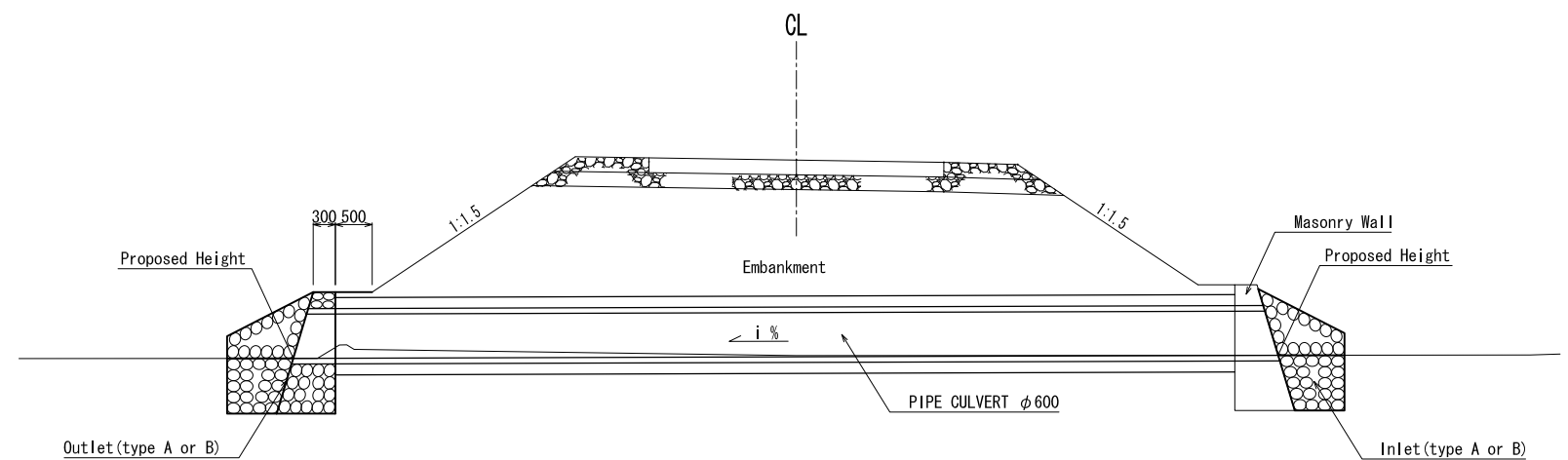
SECTION A-A



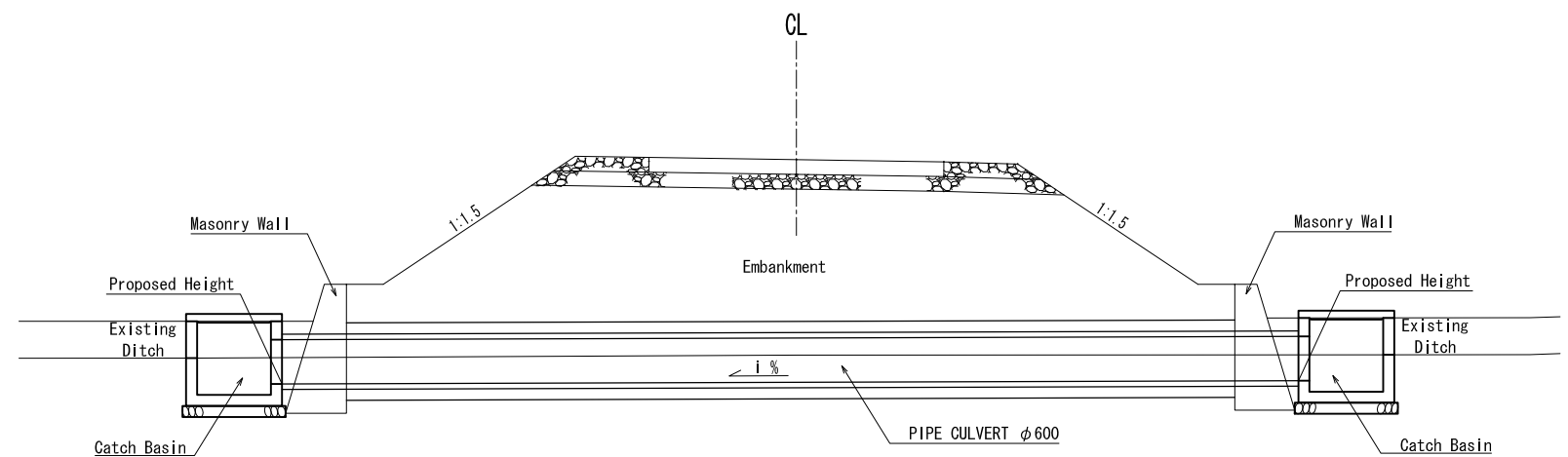
SECTION B-B

INLET/OUTLET (TYPE A) STRUCTURE S=1:20

INLET/OUTLET (TYPE B) (WING ONLY)



CROSS DRAINAGE (INLET/OUTLET) S=1:50

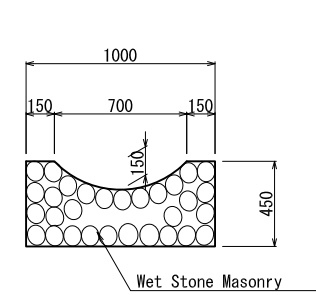


CROSS DRAINAGE (CATCH BASIN) S=1:50

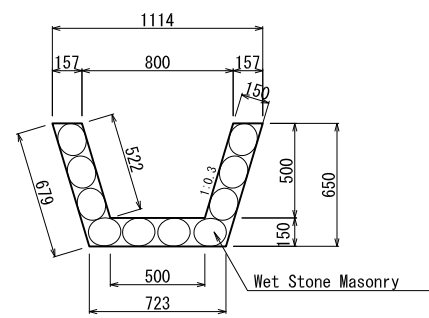
TABLE OF CONTENTS

STATION	INLET		OUTLET		PIPE CULVERT LENGTH (m)
	TYPE	PH	TYPE	PH	
0+60.0	A	58.25	A	58.22	9.50
0+138.0	catch basin	59.33	catch basin	58.70	15.20
0+350.0	B	59.74	B	59.63	15.90
0+381.5	catch basin	59.11	catch basin	59.03	13.70
0.420.0	B	59.26	B	59.24	10.30
0+480.0	A	60.01	B	59.81	9.70

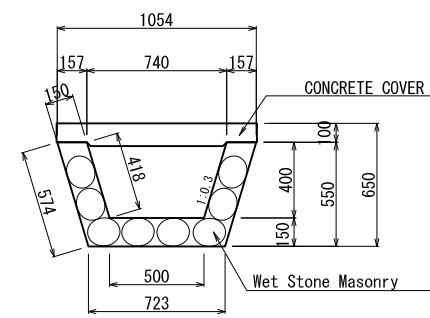
NOTE: PH= PROPOSED HEIGHT



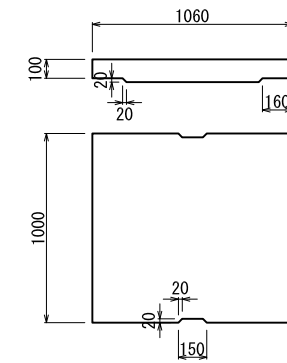
SLOPE DRAIN
S=1:20



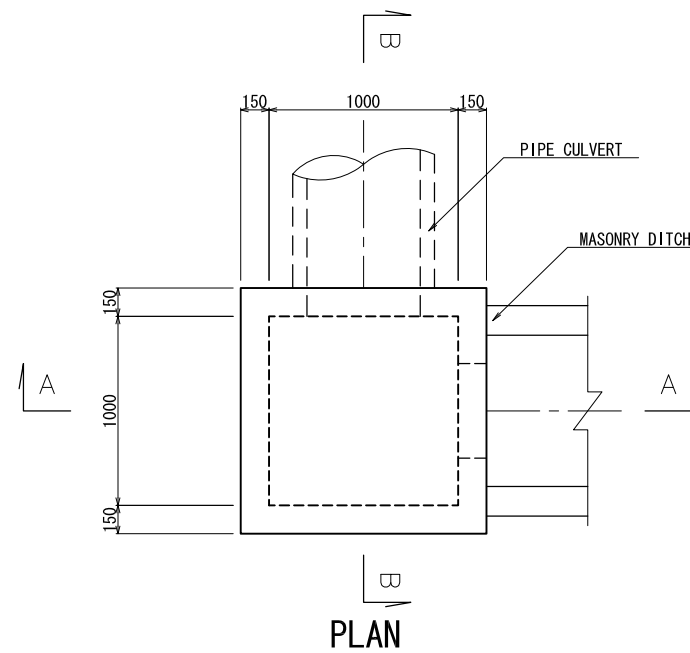
TYPE A



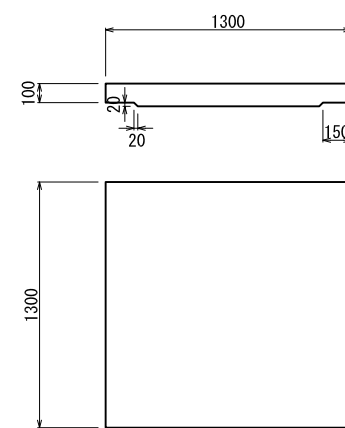
TYPE B
MASONRY DITCH S=1:20



CONCRETE COVER



PLAN



CONCRETE COVER

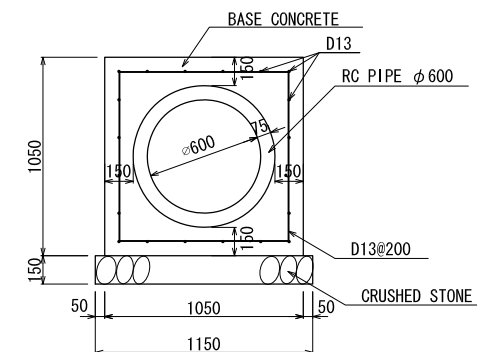
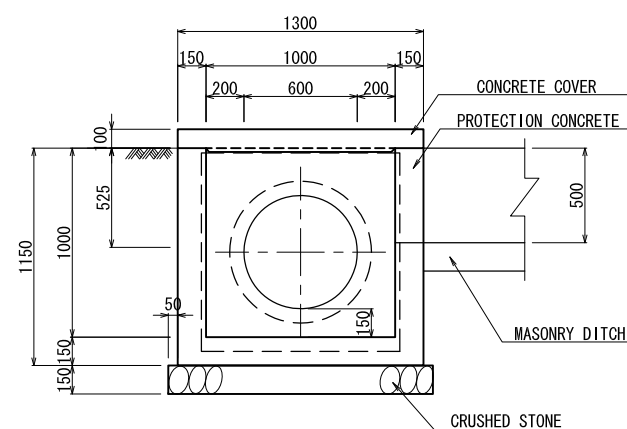
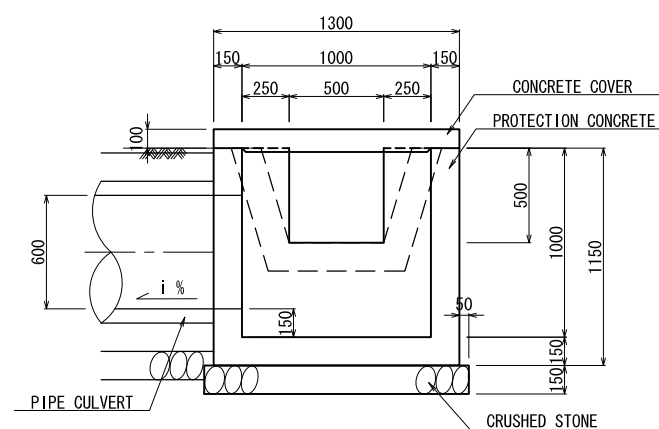


TABLE OF CONTENTS		UNIT: 10m	
ITEM	STANDARD	QUANTITY	
CONCRETE	σ C k = 18N/mm ²	6.61	m ³
FRAME WORK		20.0	m ²
CRUSHED STONE	RC-40	11.5	m ²
HUME PIPE	D600	10.0	m
BAR	D13	429.84	kg

PIPE CULVERT 1:20

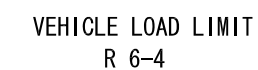
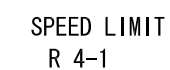
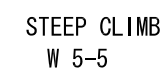
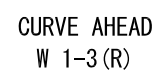
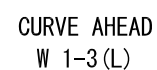
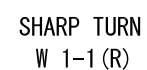


SECTION A-A



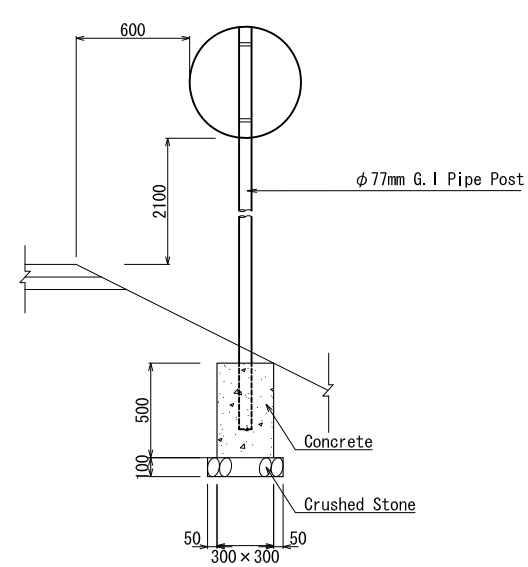
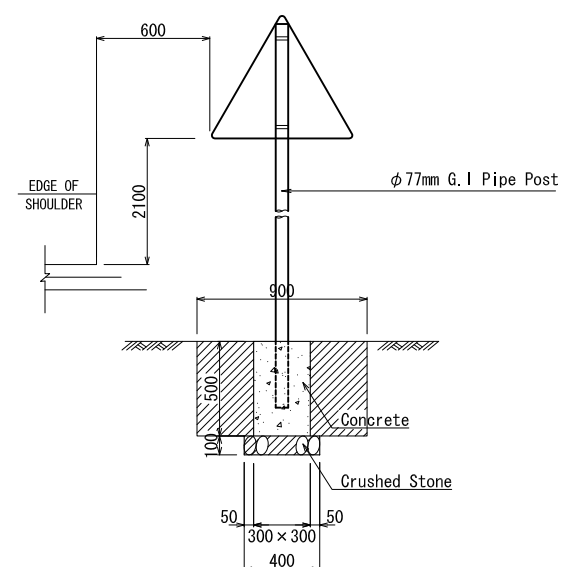
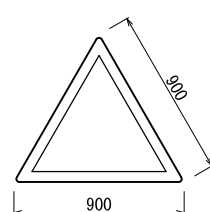
SECTION B-B

CATCH BASIN (TYPE A) S=1:20



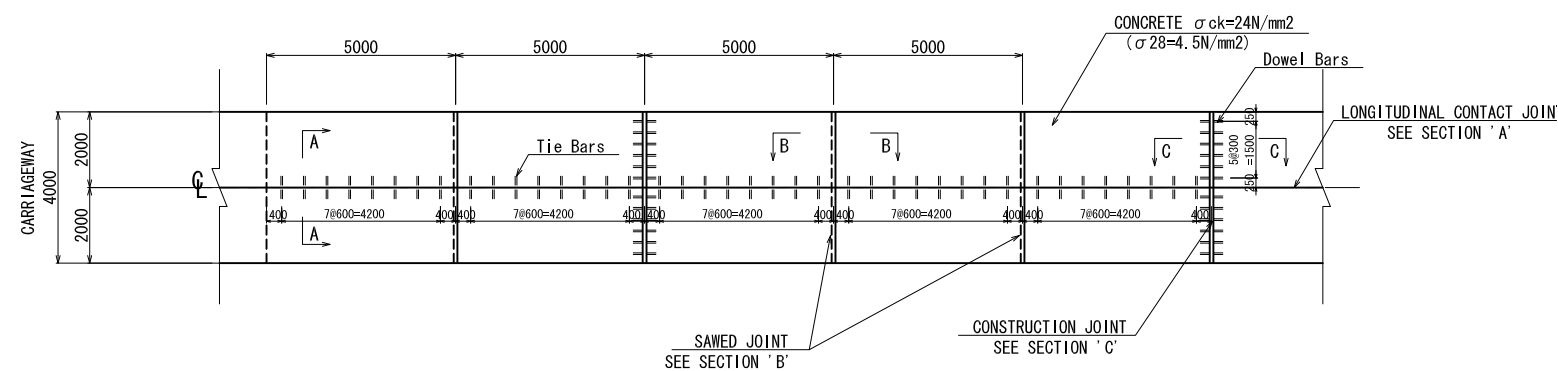
WARNING SIGN

PROHIBITORY SIGN

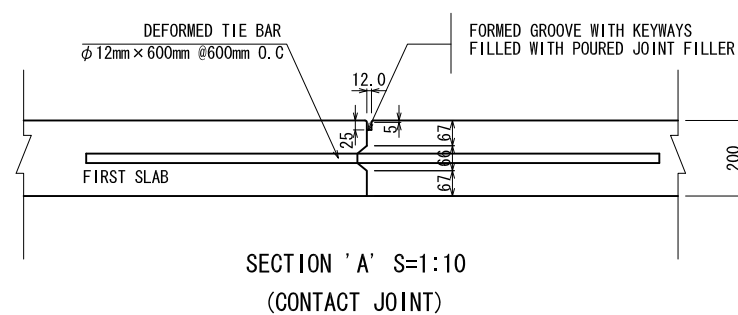


LIST OF TRAFFIC SIGNS (BAZAL)

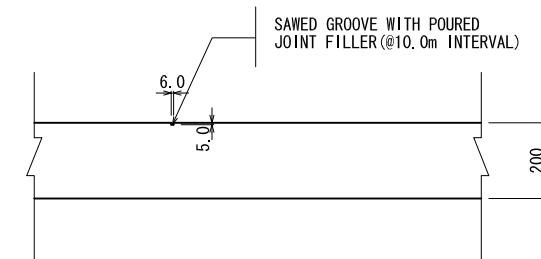
STATION	SHARP TURN		SHARP TURN		CURVE AHEAD		CURVE AHEAD		WINDING ROAD		T JUNCTION		STEEP DESCENT		STEEP CLIMB		STEEP LIMIT		VEHICLE LOAD LIMIT	
	W 1-1(L)		W 1-1(R)		W 1-3(L)		W 1-3(R)		W 1-5		W 2-4		W 5-4		W 5-5		R 4-1		R 6-4	
	L	R	L	R	L	R	L	R	L	R	L	R	L	R	L	R	L	R	L	R
0+60.0																1		1		
0+160.0						1														
0+207.0																				
0+327.0														1						
0+333.0								1												
0+207.0							1							1						
0+327.0																			1	
0+447.0						1														
0+460.0																1				
0+563.0																		1		
SUBTOTAL	0	0	0	0	1	1	1	1	0	0	0	0	1	1	1	1	1	1	1	
SUM OF L & R	0		0		2		2		0		0		2		2		2		2	
TOTAL	12																			



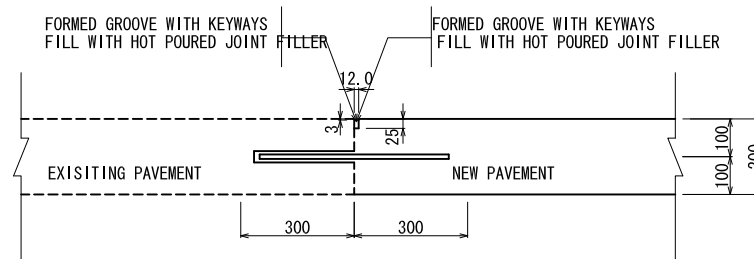
PLAN S=1:100



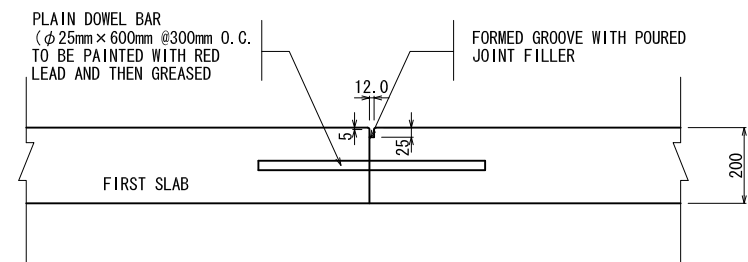
SECTION 'A' S=1:10
(CONTACT JOINT)



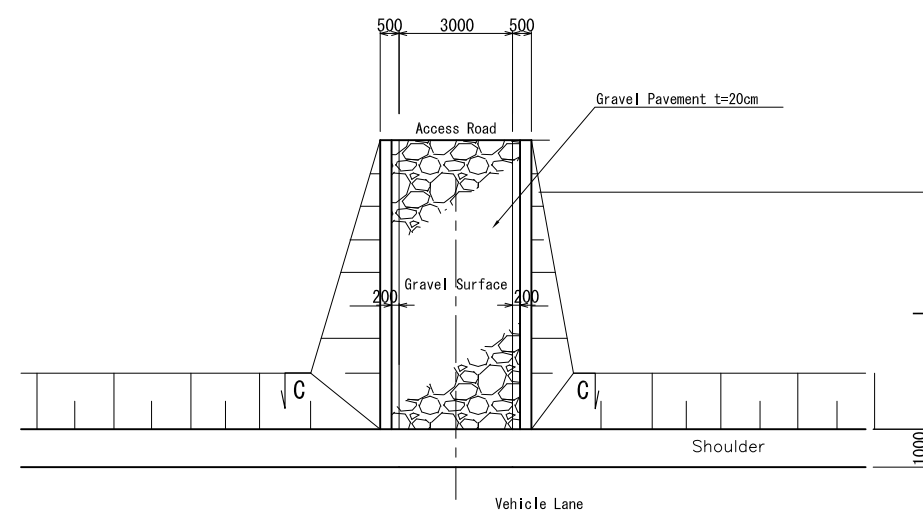
SECTION 'B' S=1:10
(CONTRACTION JOINT)



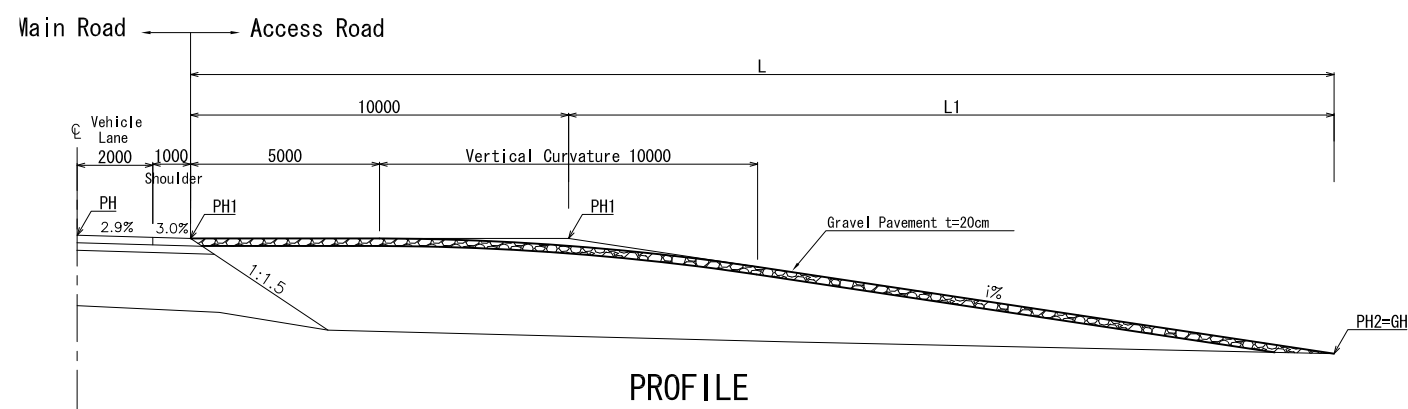
DETAIL OF EXISTING PCCP CONNECTION S=1:10



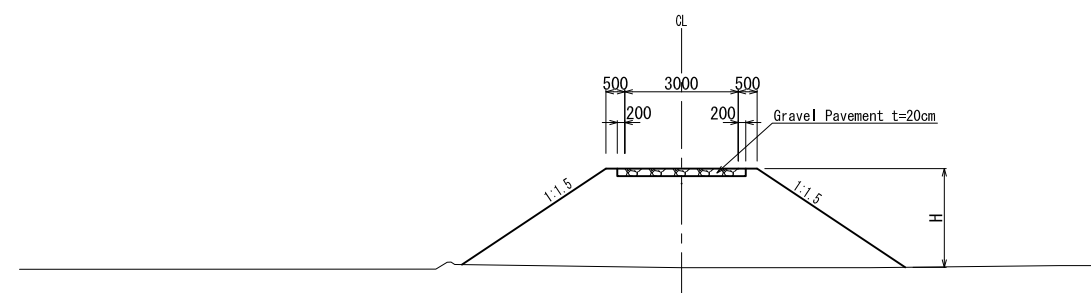
SECTION 'C' S=1:10
(CONSTRUCTION JOINT)



PLAN

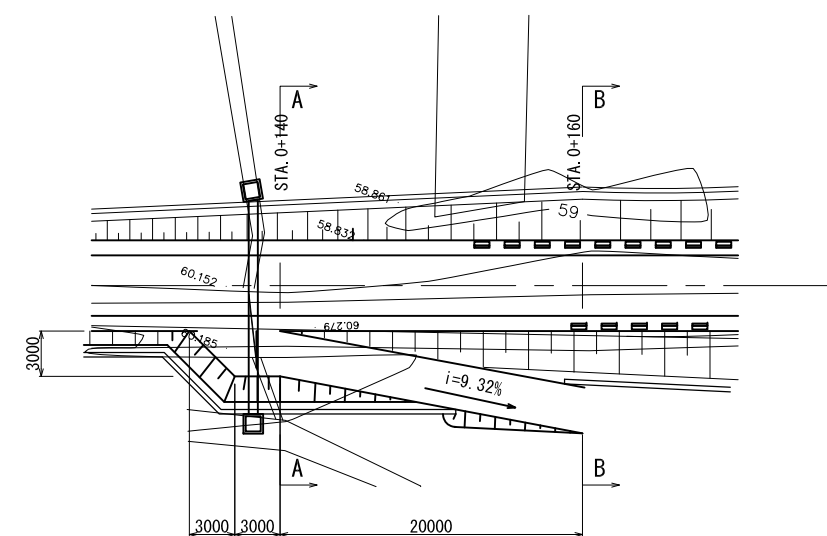


PROFILE

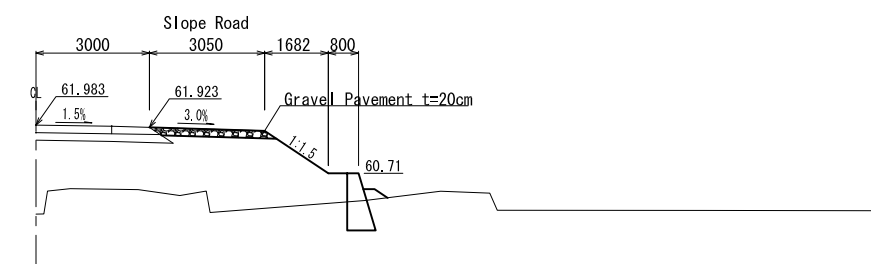


C-C SECTION
DETAIL OF ACCESS ROAD S=1:100

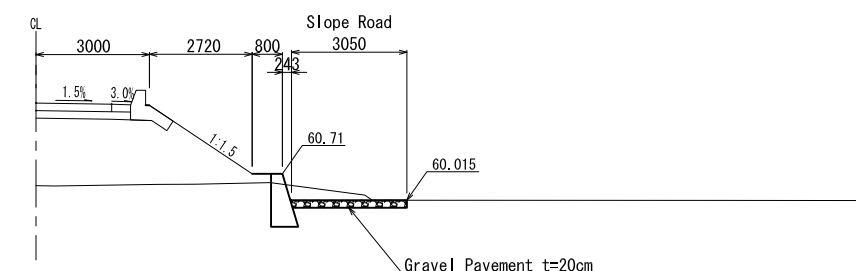
Access Road	Station	PH (m)	PH1 (m)	PH2=GH (m)	i (%)	L1 (m)	L (m)	H (m)
A	0+386.6 (L)	62.205	62.117	60.00	6.0	35.3	45.3	1.98
B	0+386.6 (R)	62.205	62.117	61.00	5.0	22.3	32.3	1.57



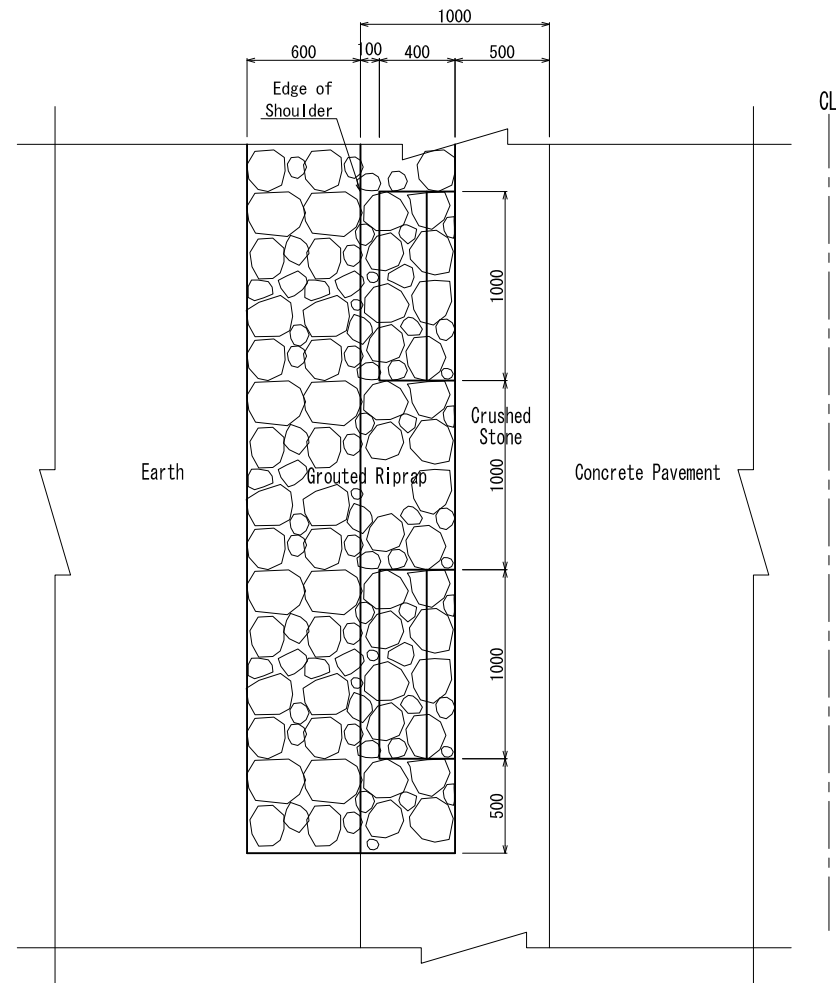
PLAN S=1:250



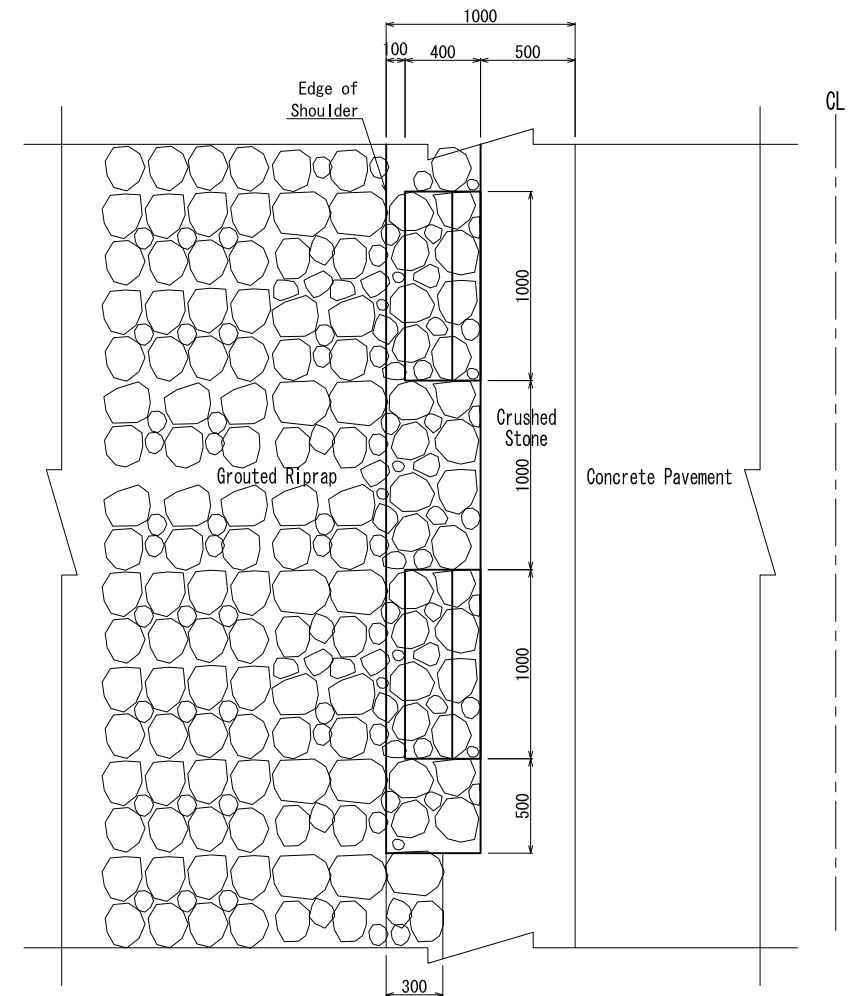
SECTION A-A S=1:100



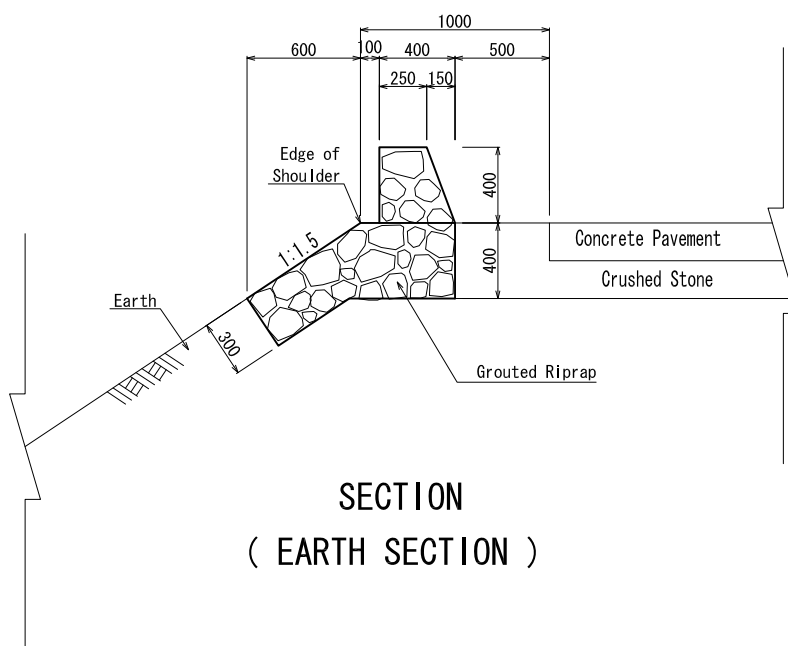
SECTION B-B S=1:100
DETAIL OF SLOPE ROAD
(STA. 0+140 (R))



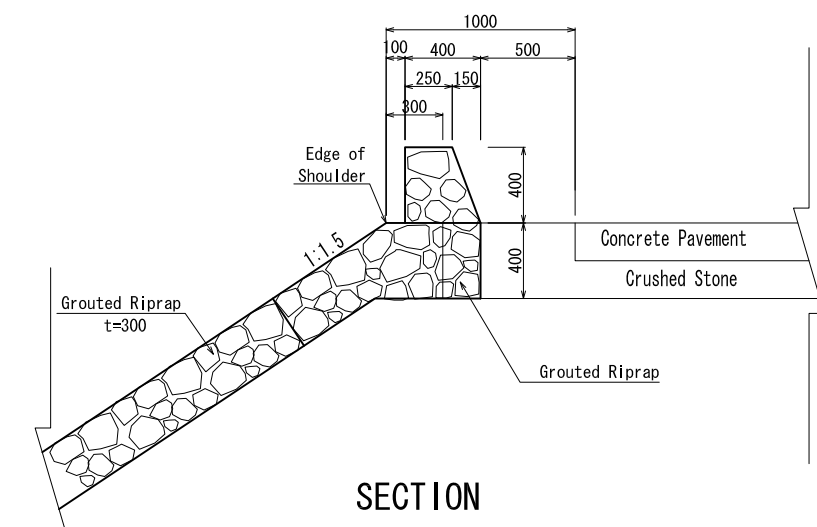
PLAN
(EARTH SECTION)



PLAN
(RIPRAP SECTION)

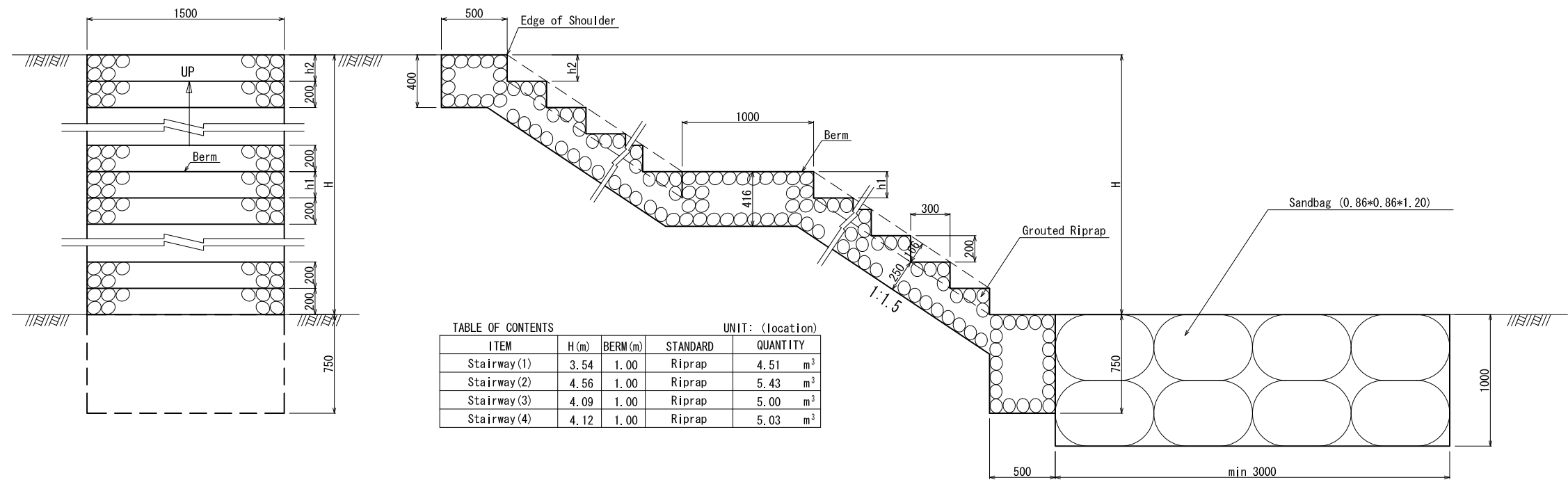


SECTION
(EARTH SECTION)

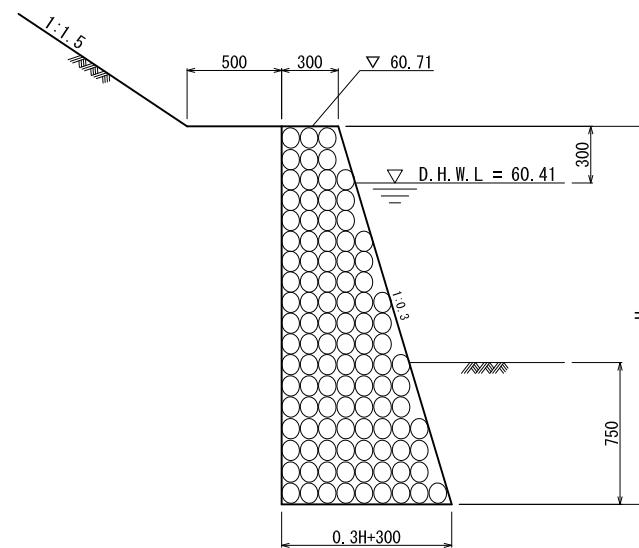


SECTION
(RIPRAP SECTION)

RIPRAP GUARDBLOCK (TYPE A) S=1:20



STAIRWAY S=1:20



LIST OF MASONRY WALL		
STATION	H (m)	
	LEFT SIDE	RIGHT SIDE
0+80.0	1.80	1.20
0+100.0	2.20	1.70
0+120.0	2.20	1.60
0+140.0	1.90	1.50
0+160.0	2.50	1.40
0+180.0	2.30	1.40
0+200.0	2.50	1.40
0+340.0	2.00	1.80
0+360.0	1.70	1.50
0+380.0	1.70	1.70
0+400.0	2.00	1.50
0+420.0	2.20	2.20
0+440.0	2.20	1.70
0+460.0	1.70	1.80
0+480.0	1.00	---

MASONRY WALL (TYPE A) S=1:20