

LEGEND

- STC-X PERMANENT HORIZONTAL AND VERTICAL CONTROL
- BH-1 BORE HOLE
- High Water Level, Water Level
- X.XX SPOT HEIGHT
- #X.XX TREE AND COCONUT WITH STEM DIAMETER
- X.XX CONTOUR LINE WITH INDEX VALUE
- BOUNDARY LINE OF THE RIVER
- BOUNDARY LINE OF THE SANDBANK IN A RIVER
- BOUNDARY LINE OF THE BUSH, FOREST AND PLANTATION
- BOUNDARY LINE OF THE AREA OF *CROSS

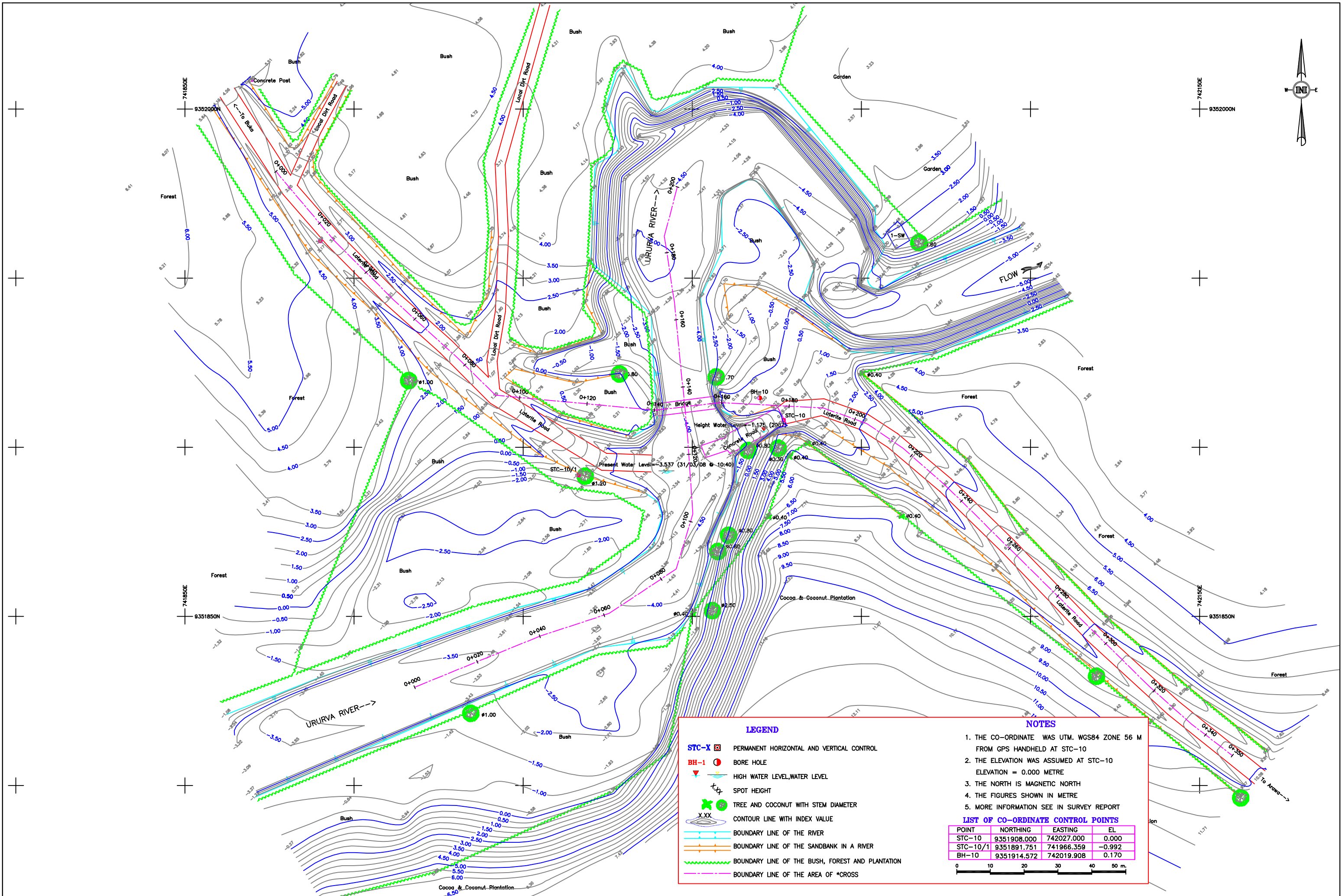
NOTES

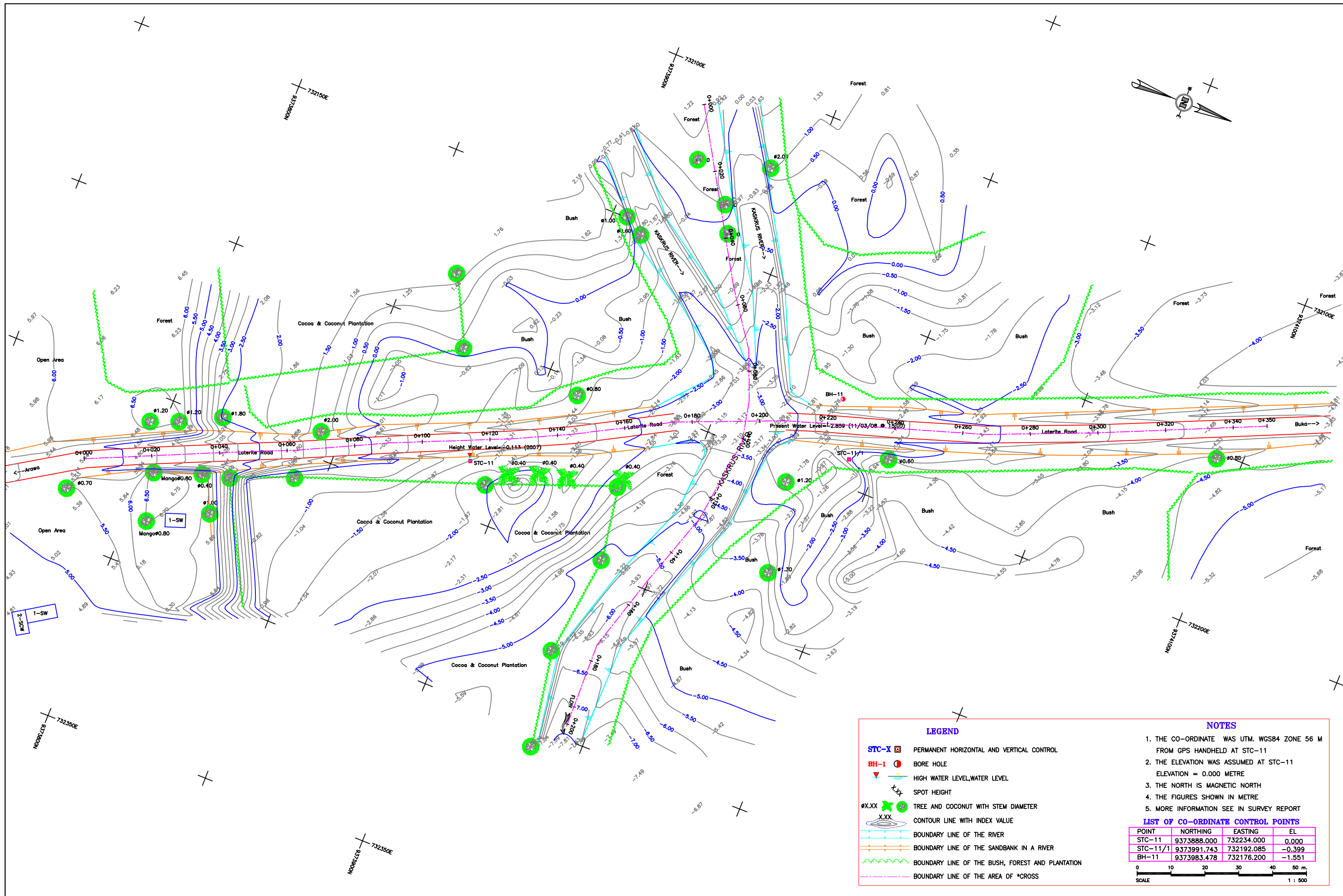
1. THE CO-ORDINATE WAS UTM. WGS84 ZONE 56 M FROM GPS HANDHELD AT STC-09
2. THE ELEVATION WAS ASSUMED AT STC-09 ELEVATION = 0.000 METRE
3. THE NORTH IS MAGNETIC NORTH
4. THE FIGURES SHOWN IN METRE
5. MORE INFORMATION SEE IN SURVEY REPORT

LIST OF CO-ORDINATE CONTROL POINTS

POINT	NORTHING	EASTING	EL
STC-09	9346242.000	752455.000	0.000
STC-09/1	9346206.349	752490.651	-0.237
BH-9	9346239.523	752447.828	-0.557

0 10 20 30 40 50 m.
SCALE 1 : 500





LEGEND

- **STC-X** PERMANENT HORIZONTAL AND VERTICAL CONTROL
- **BH-1** BORE HOLE
- HIGH WATER LEVEL, WATER LEVEL
- x SPOT HEIGHT
- **ØX.XX** TREE AND COCONUT WITH STEM DIAMETER
- CONTOUR LINE WITH INDEX VALUE
- BOUNDARY LINE OF THE RIVER
- BOUNDARY LINE OF THE SANDBANK IN A RIVER
- BOUNDARY LINE OF THE BUSH, FOREST AND PLANTATION
- BOUNDARY LINE OF THE AREA OF *CROSS

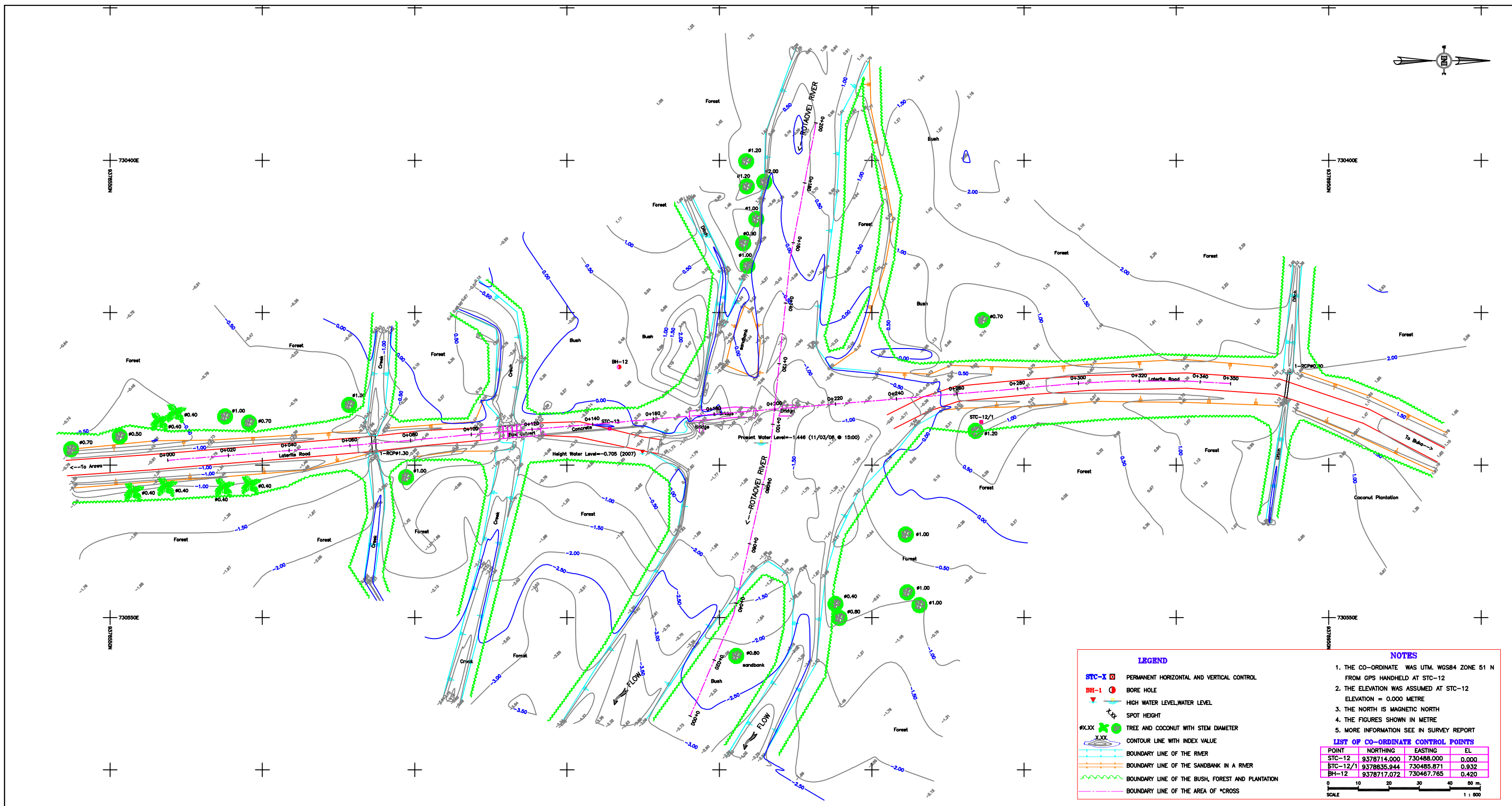
NOTES

1. THE CO-ORDINATE WAS UTM. WGS84 ZONE 56 M FROM GPS HANDHELD AT STC-11
2. THE ELEVATION WAS ASSUMED AT STC-11 ELEVATION = 0.000 METRE
3. THE NORTH IS MAGNETIC NORTH
4. THE FIGURES SHOWN IN METRE
5. MORE INFORMATION SEE IN SURVEY REPORT

LIST OF CO-ORDINATE CONTROL POINTS

POINT	NORTHING	EASTING	EL
STC-11	9373888.000	732234.000	0.000
STC-11/1	9373991.743	732192.085	-0.399
BH-11	9373983.478	732176.200	-1.551

0 10 20 30 40 50 m.
 SCALE 1 : 500



LEGEND

- STC-X □ PERMANENT HORIZONTAL AND VERTICAL CONTROL
- BH-1 ● BORE HOLE
- ▽ HIGH WATER LEVEL/WATER LEVEL
- ⊕ SPOT HEIGHT
- #X.XX ● TREE AND COCONUT WITH STEM DIAMETER
- CONTOUR LINE WITH INDEX VALUE
- BOUNDARY LINE OF THE RIVER
- BOUNDARY LINE OF THE SANDBANK IN A RIVER
- BOUNDARY LINE OF THE BUSH, FOREST AND PLANTATION
- BOUNDARY LINE OF THE AREA OF *CROSS

NOTES

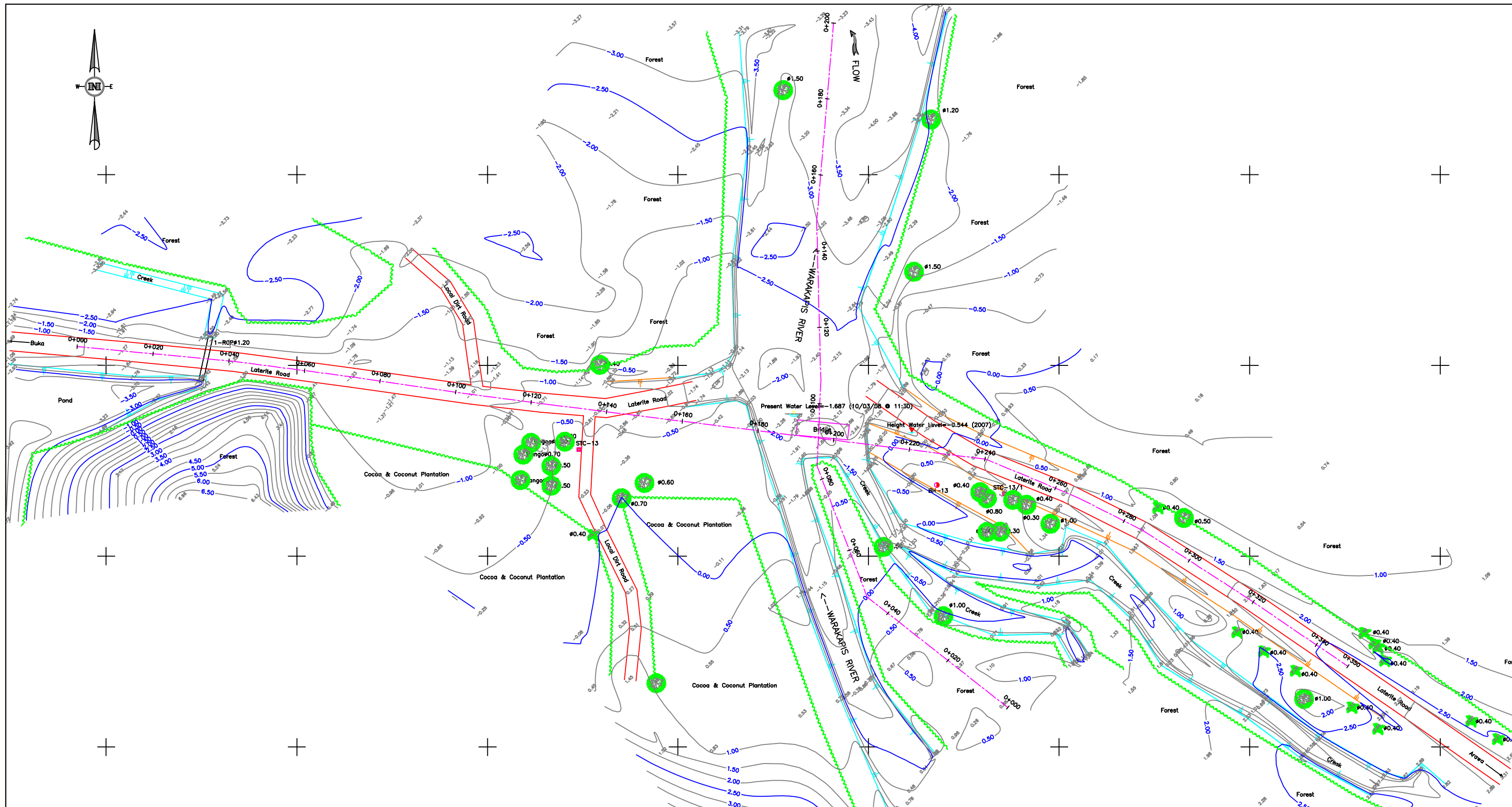
1. THE CO-ORDINATE WAS UTM, WGS84 ZONE 51 N FROM GPS HANDHELD AT STC-12
2. THE ELEVATION WAS ASSUMED AT STC-12 ELEVATION = 0.000 METRE
3. THE NORTH IS MAGNETIC NORTH
4. THE FIGURES SHOWN IN METRE
5. MORE INFORMATION SEE IN SURVEY REPORT

LIST OF CO-ORDINATE CONTROL POINTS

POINT	NORTHING	EASTING	EL
STC-12	9378714.000	730488.000	0.000
STC-12/1	9378835.944	730485.871	0.932
BH-12	9378717.072	730467.765	0.420

0 10 20 30 40 50 m
SCALE 1 : 500

DEPARTMENT OF WORKS	THE PROJECT FOR CONSTRUCTION OF BRIDGES ON BOUGAINVILLE COASTAL TRUNK ROAD IN THE INDEPENDENT STATE OF PAPUA NEW GUINEA	JAPAN INTERNATIONAL COOPERATION AGENCY (JICA)	TITLE TOPOGRAPHIC MAP OF THE ROTAOVEI RIVER	SCALE HOR: 1:500 VER: 1:500	DATE 15/04/08	DRAWING NO. STC-12
---------------------	---	---	--	-----------------------------------	------------------	-----------------------



LEGEND

- STC-X PERMANENT HORIZONTAL AND VERTICAL CONTROL
- BH-1 BORE HOLE
- HIGH WATER LEVEL, WATER LEVEL
- x.xx SPOT HEIGHT
- #X.XX TREE AND COCONUT WITH STEM DIAMETER
- CONTOUR LINE WITH INDEX VALUE
- BOUNDARY LINE OF THE RIVER
- BOUNDARY LINE OF THE SANDBANK IN A RIVER
- BOUNDARY LINE OF THE BUSH, FOREST AND PLANTATION
- BOUNDARY LINE OF THE AREA OF *CROSS

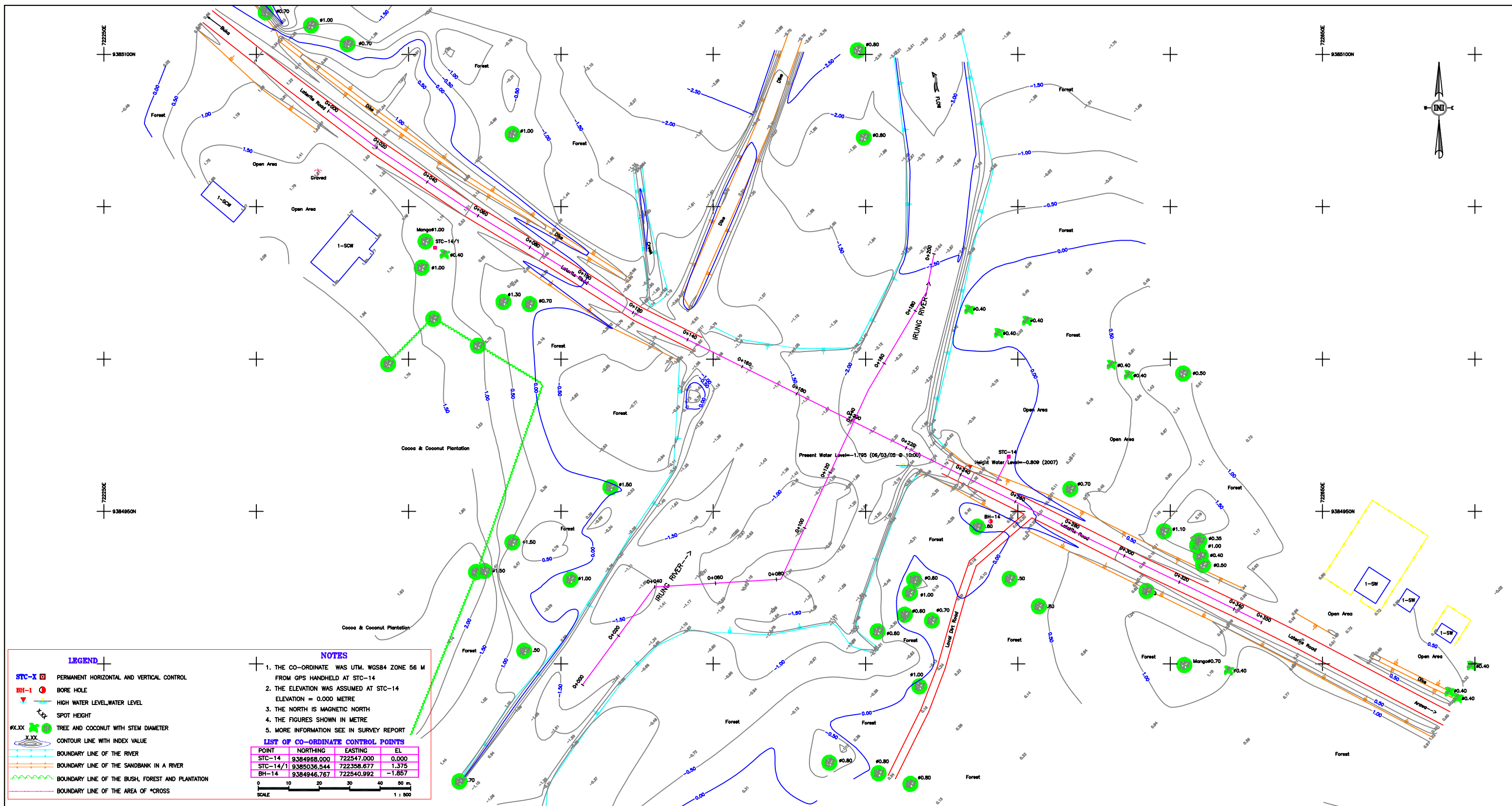
NOTES

1. THE CO-ORDINATE WAS UTM. WGS84 ZONE 56 M FROM GPS HANDHELD AT STC-13
2. THE ELEVATION WAS ASSUMED AT STC-13 ELEVATION = 0.000 METRE
3. THE NORTH IS MAGNETIC NORTH
4. THE FIGURES SHOWN IN METRE
5. MORE INFORMATION SEE IN SURVEY REPORT

LIST OF CO-ORDINATE CONTROL POINTS

POINT	NORTHING	EASTING	EL
STC-13	9384378.000	723824.000	0.000
STC-13/1	9384366.336	723935.598	1.197
BH-13	9384368.681	723917.887	-0.055

0 10 20 30 40 50 m.
SCALE 1 : 500



LEGEND

- STC-X PERMANENT HORIZONTAL AND VERTICAL CONTROL
- BH-1 BORE HOLE
- High Water Level, Water Level
- Spot Height
- #X.XX TREE AND COCONUT WITH STEM DIAMETER
- Contour Line with Index Value
- Boundary Line of the River
- Boundary Line of the Sandbank in a River
- Boundary Line of the Bush, Forest and Plantation
- Boundary Line of the Area of *Cross

NOTES

1. THE CO-ORDINATE WAS UTM, WGS84 ZONE 56 M FROM GPS HANDHELD AT STC-14
2. THE ELEVATION WAS ASSUMED AT STC-14 ELEVATION = 0.000 METRE
3. THE NORTH IS MAGNETIC NORTH
4. THE FIGURES SHOWN IN METRE
5. MORE INFORMATION SEE IN SURVEY REPORT

LIST OF CO-ORDINATE CONTROL POINTS

POINT	NORTHING	EASTING	EL
STC-14	9384968.000	722547.000	0.000
STC-14/1	9385036.544	722358.677	1.375
BH-14	9384946.767	722540.992	-1.857

0 10 20 30 40 50 m
SCALE 1 : 800

DEPARTMENT OF WORKS	THE PROJECT FOR CONSTRUCTION OF BRIDGES ON BOUGAINVILLE COASTAL TRUNK ROAD IN THE INDEPENDENT STATE OF PAPUA NEW GUINEA	JAPAN INTERNATIONAL COOPERATION AGENCY (JICA)	TITLE TOPOGRAPHIC MAP OF THE IRUNG RIVER	SCALE HOR: 1:500 VER: 1:50	DATE 15/04/08	DRAWING NO. STC-14
---------------------	---	---	---	----------------------------------	------------------	-----------------------



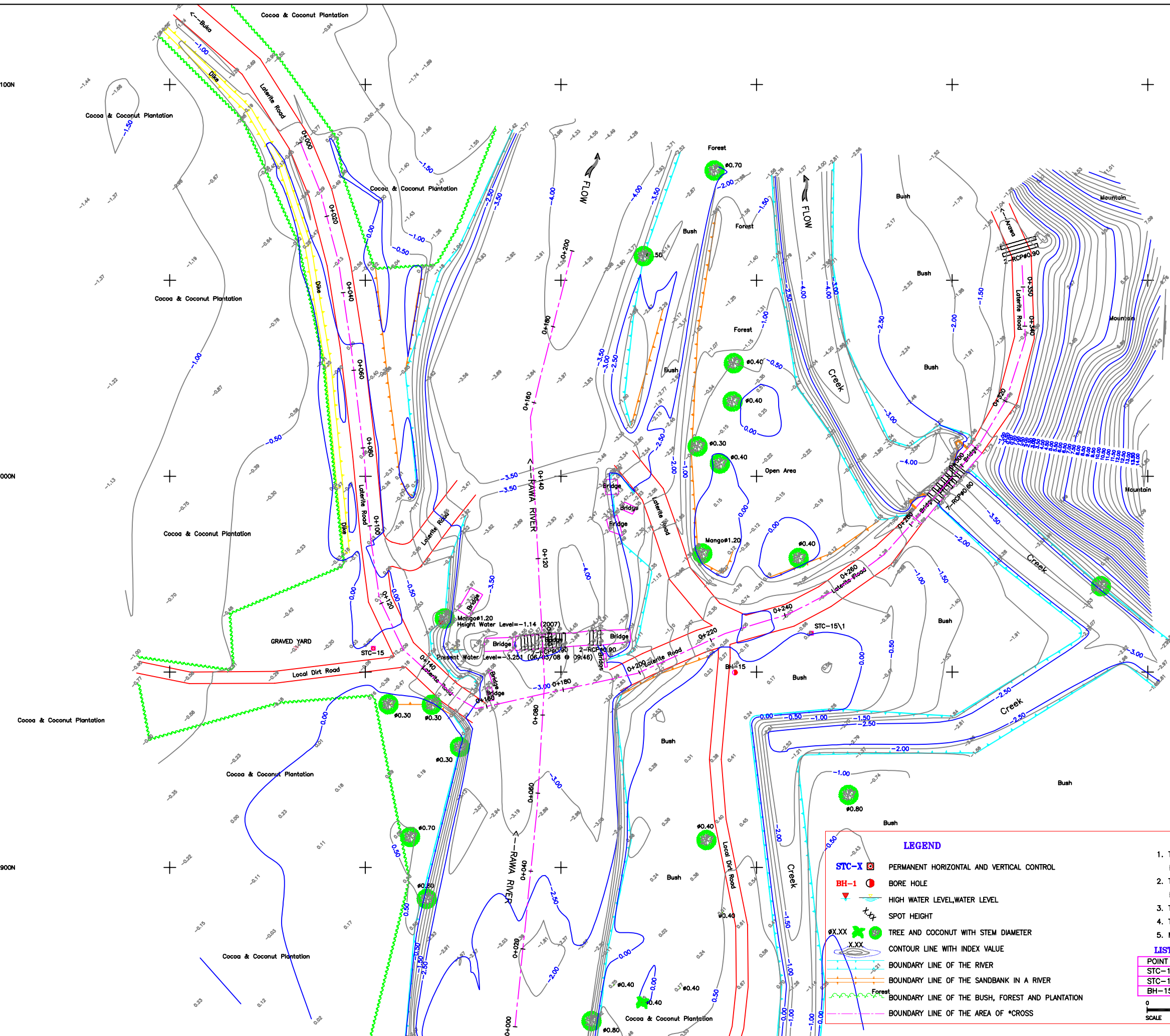
711800E
9387100N

711800E
9387000N

711800E
9386900N

712150E
9387100N

712150E
9387000N



LEGEND

- STC-X PERMANENT HORIZONTAL AND VERTICAL CONTROL
- BH-1 BORE HOLE
- High Water Level, Water Level
- SPOT HEIGHT
- ØX.XX TREE AND COCONUT WITH STEM DIAMETER
- X.XX CONTOUR LINE WITH INDEX VALUE
- BOUNDARY LINE OF THE RIVER
- BOUNDARY LINE OF THE SANDBANK IN A RIVER
- BOUNDARY LINE OF THE BUSH, FOREST AND PLANTATION
- BOUNDARY LINE OF THE AREA OF *CROSS

- NOTES**
1. THE CO-ORDINATE WAS UTM. WGS84 ZONE 56 M FROM GPS HANDHELD AT STC-15
 2. THE ELEVATION WAS ASSUMED AT STC-15 ELEVATION = 0.000 METRE
 3. THE NORTH IS MAGNETIC NORTH
 4. THE FIGURES SHOWN IN METRE
 5. MORE INFORMATION SEE IN SURVEY REPORT

LIST OF CO-ORDINATE CONTROL POINTS

POINT	NORTHING	EASTING	EL
STC-15	9386956.000	711902.000	0.000
STC-15/1	9386959.910	712013.978	0.504
BH-15	9386949.868	711994.451	0.457

0 10 20 30 40 50 m.
SCALE 1 : 500

DEPARTMENT OF WORKS

THE PROJECT FOR CONSTRUCTION OF BRIDGES ON BOUGAINVILLE
COASTAL TRUNK ROAD IN THE INDEPENDENT STATE OF PAPUA NEW GUINEA

A7-2-16 JAPAN INTERNATIONAL COOPERATION AGENCY (JICA)

TITLE
TOPOGRAPHIC MAP OF THE RAWA RIVER

SCALE	DATE	DRAWING NO.
HOR.1:500 VER.1:50	15/04/08	STC-15