






予定井戸掘削地点の凡例について


 : 選定された井戸掘削候補地
BH6


 : 除外された井戸掘削候補地
BH6


 : 村落中心部


 : 既存手掘り抜き井戸
Dug Well

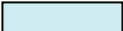
 : 既存浅井戸
Shallow


 : 開発調査によって成功井と認められた井戸
JICA


 : リニアメント

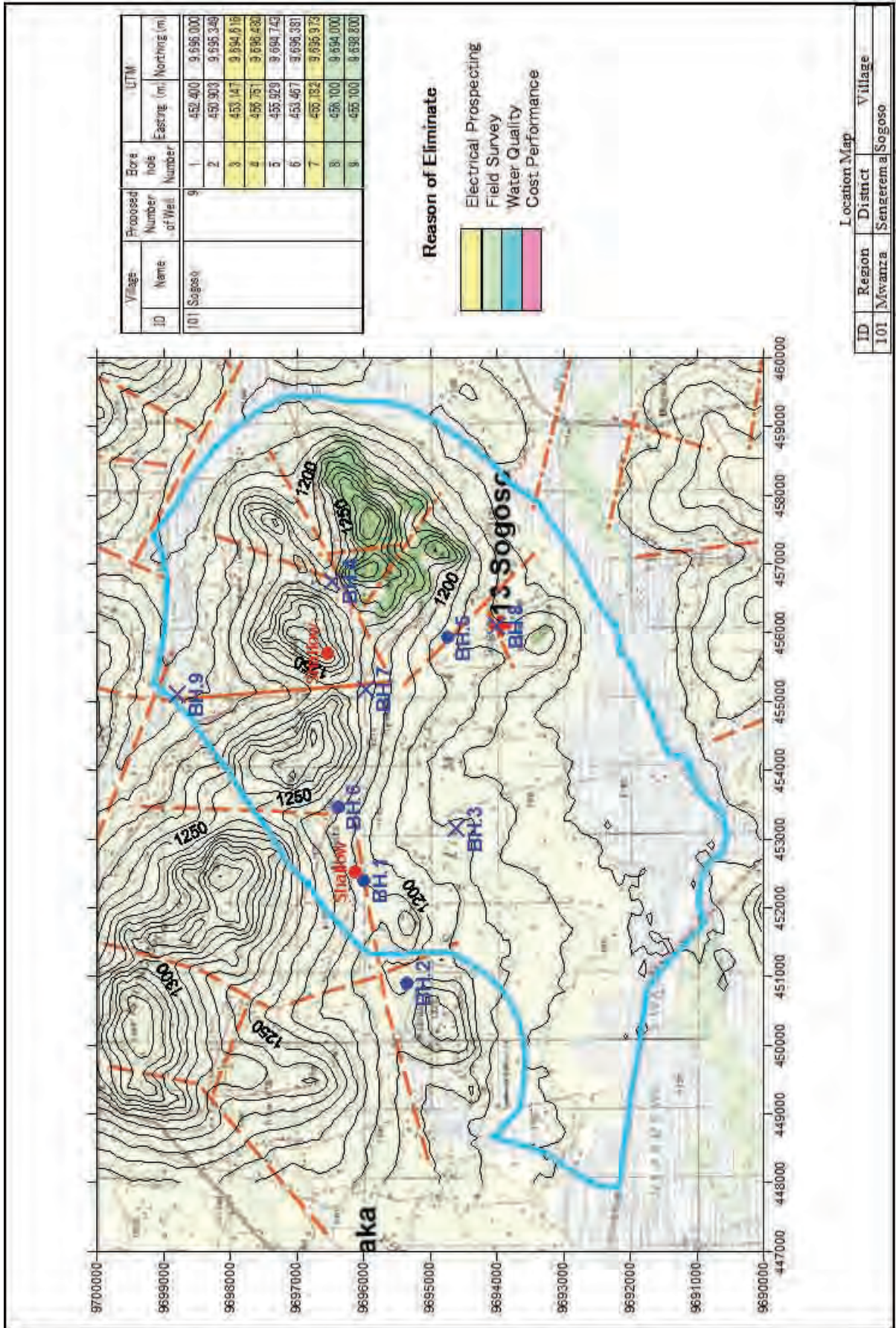
 : 村落境界

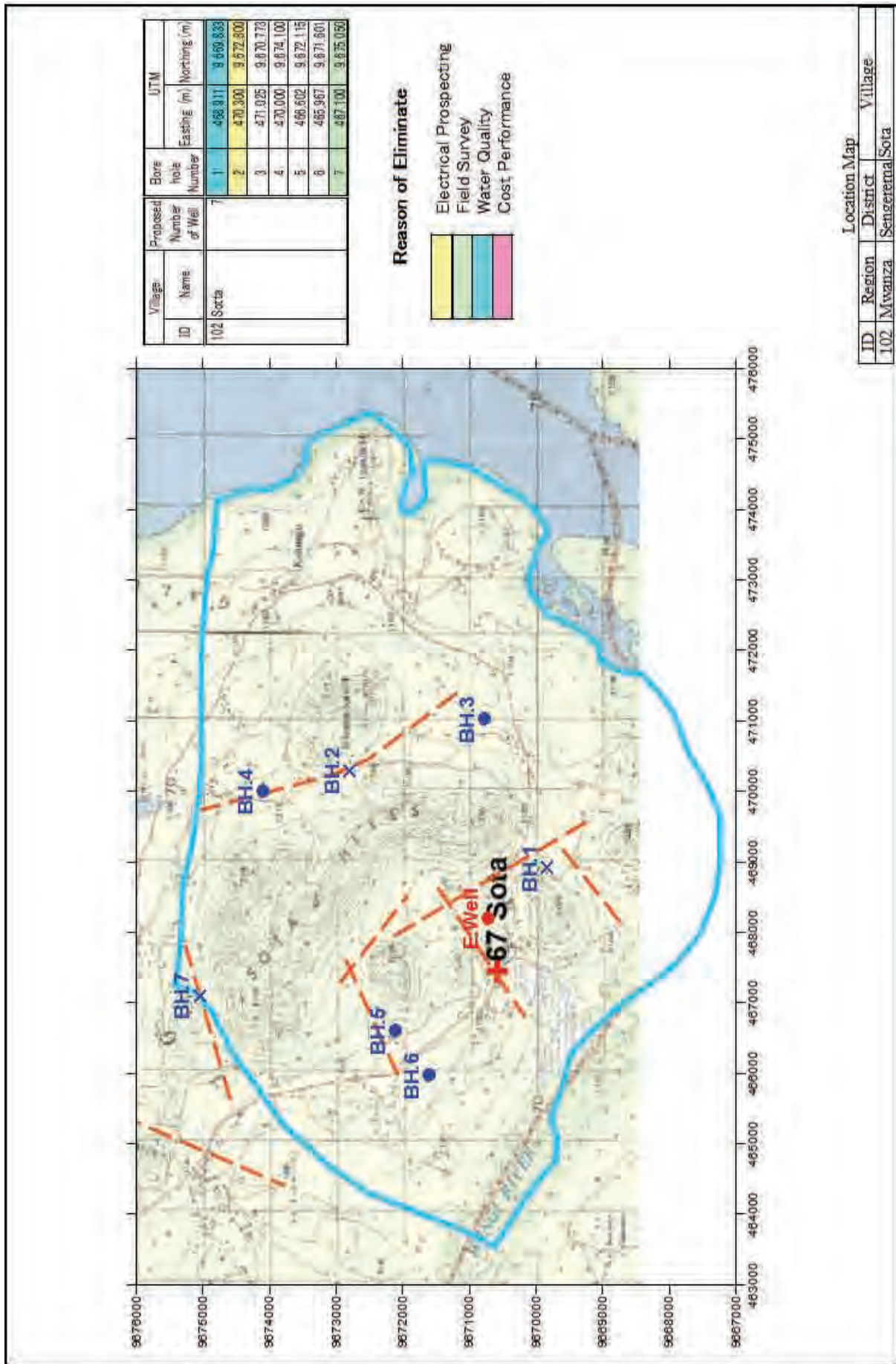
 : 垂直電気探査結果により除外された井戸掘削予定地

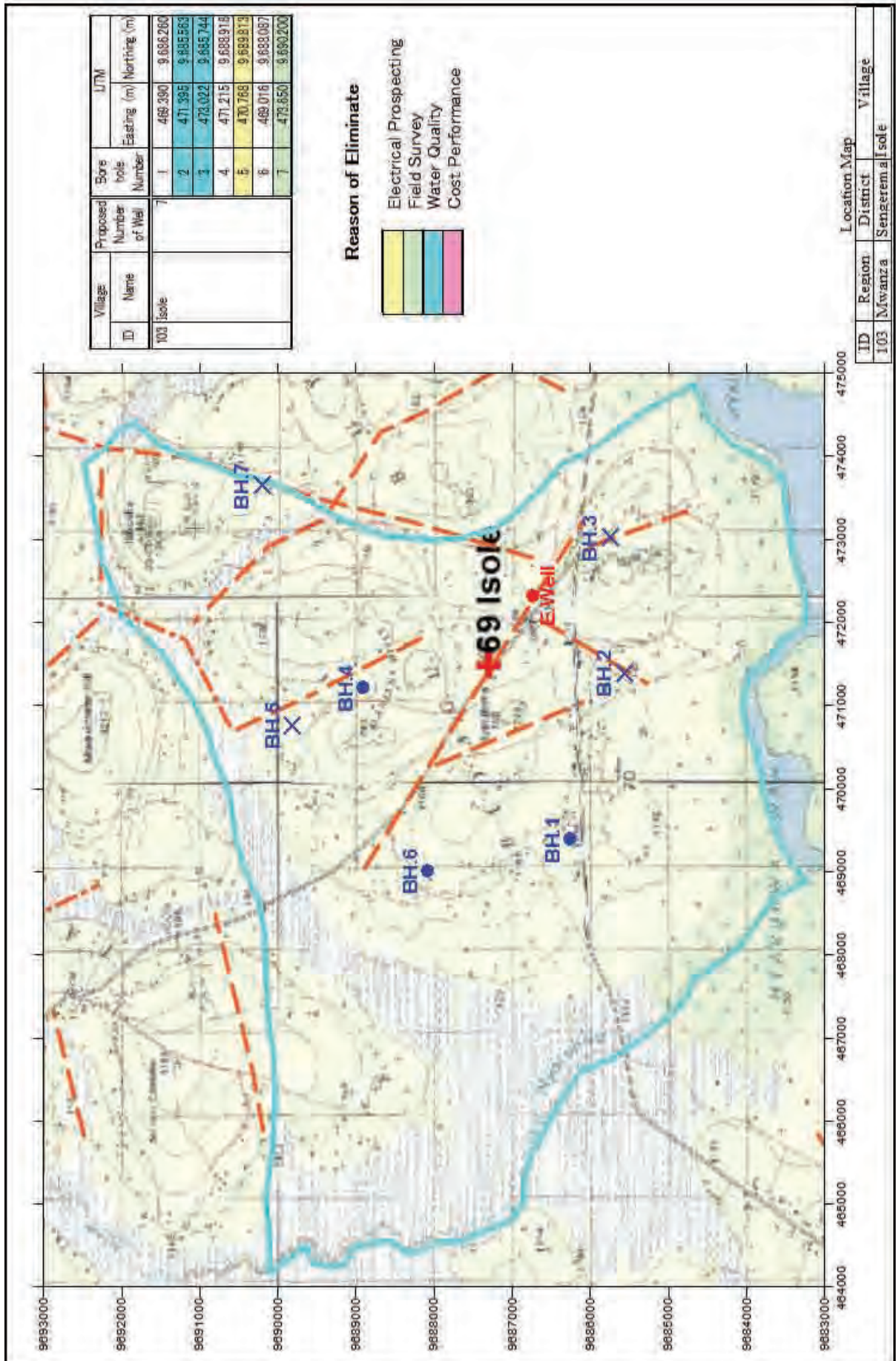
 : 現地踏査結果により除外された井戸掘削予定地

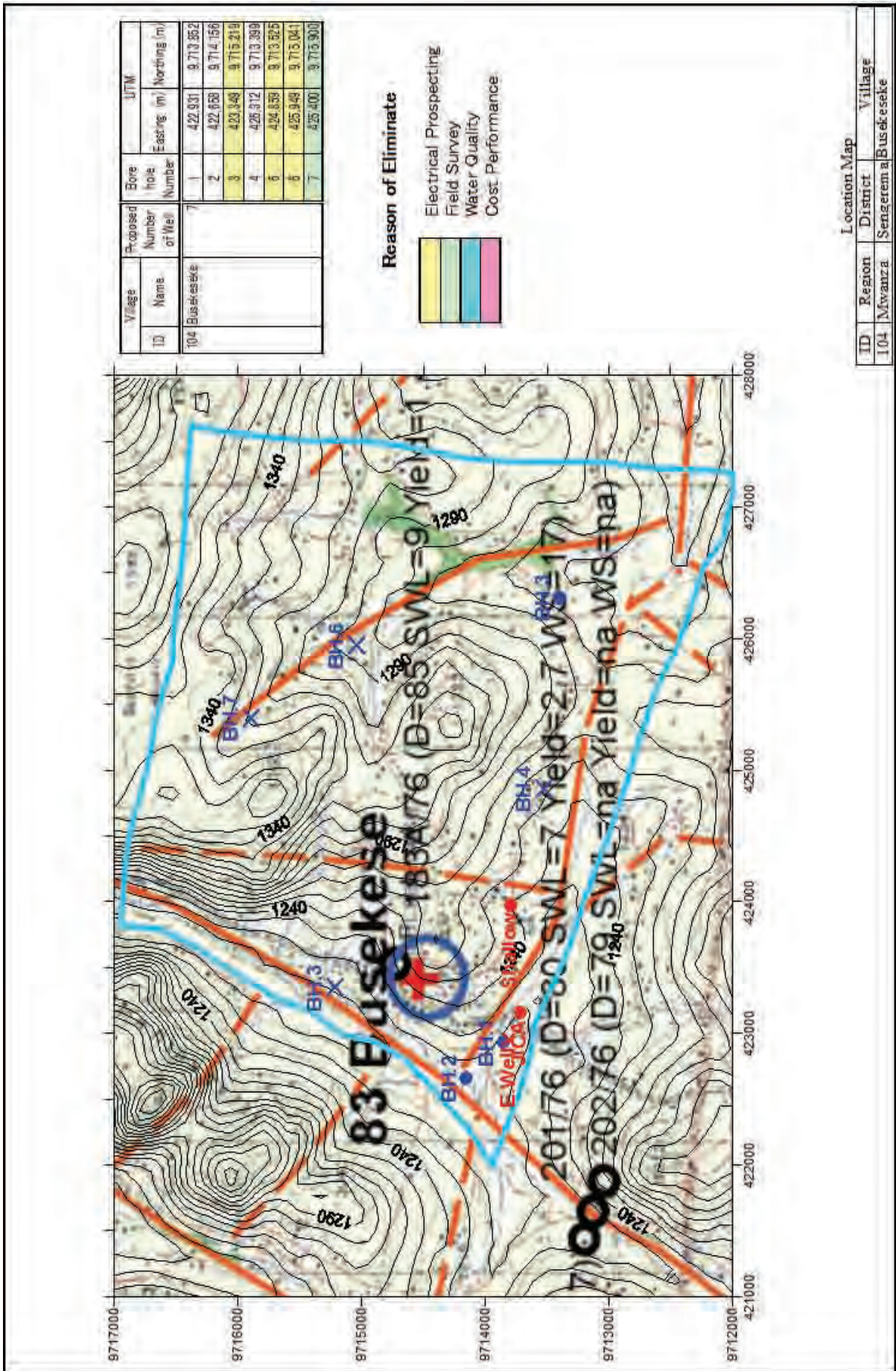
 : 水質試験結果により除外された井戸掘削予定地

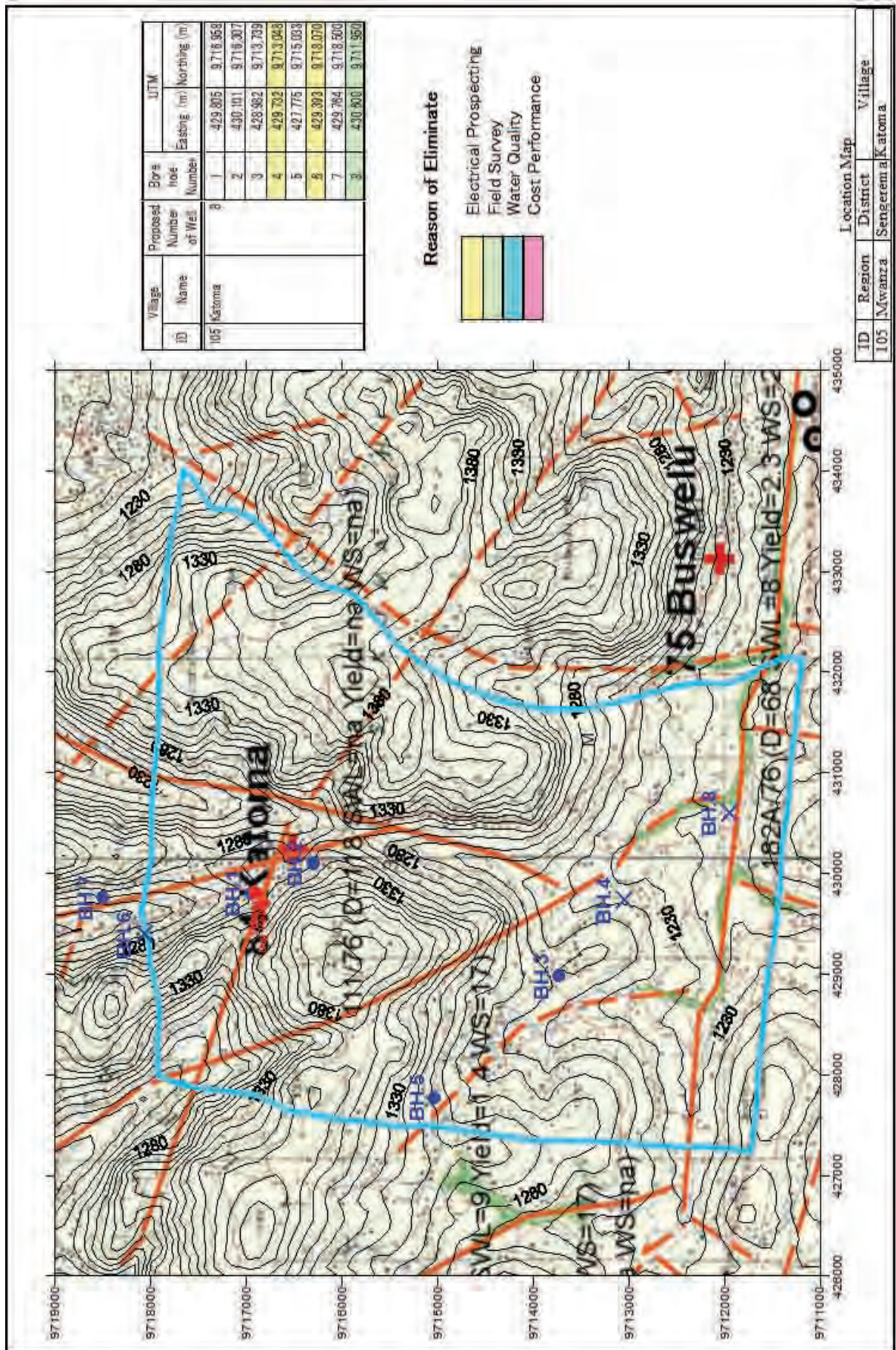
 : 想定井戸掘削成功率が低いと判断され除外された井戸掘削予定地

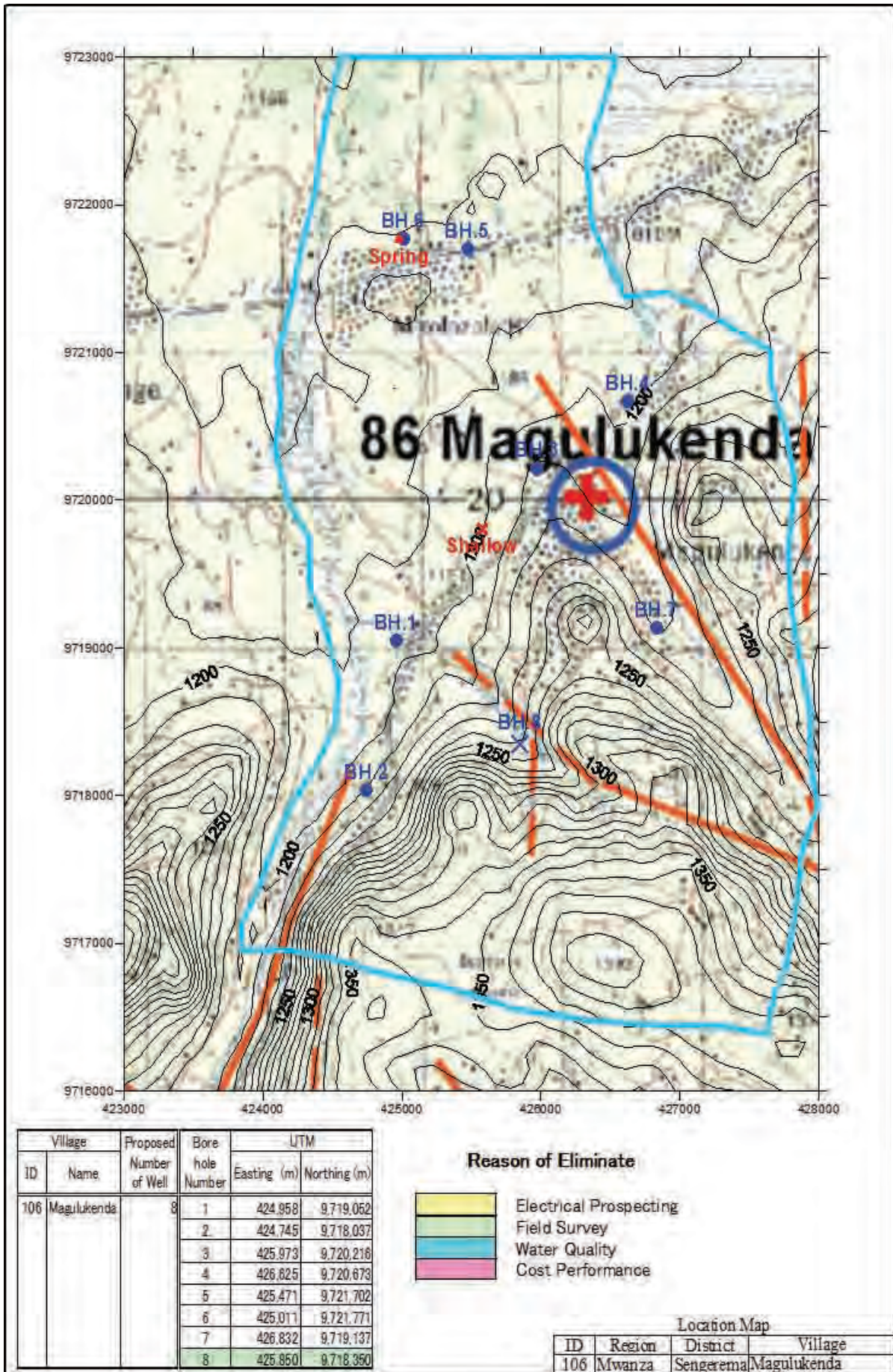




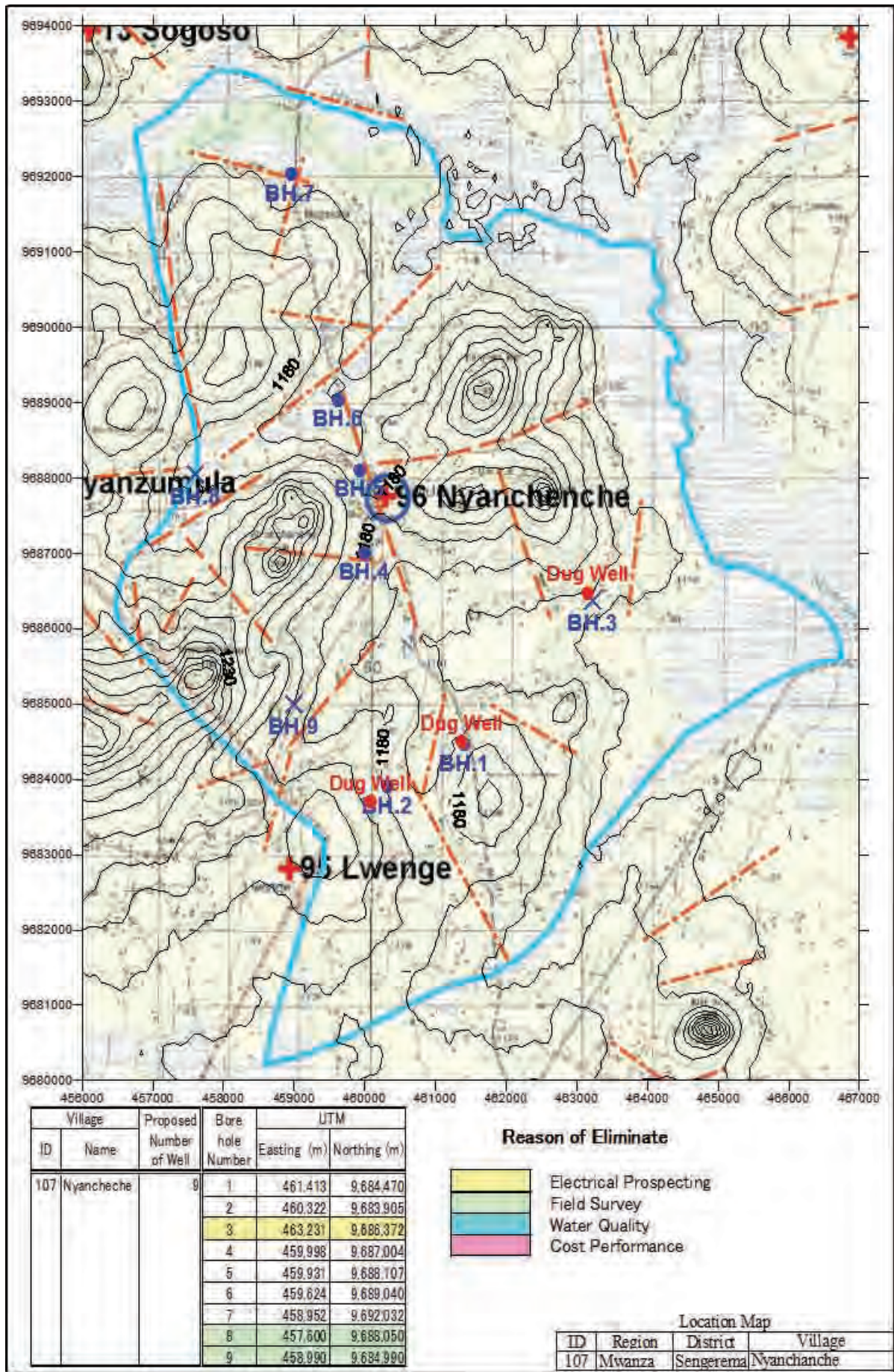


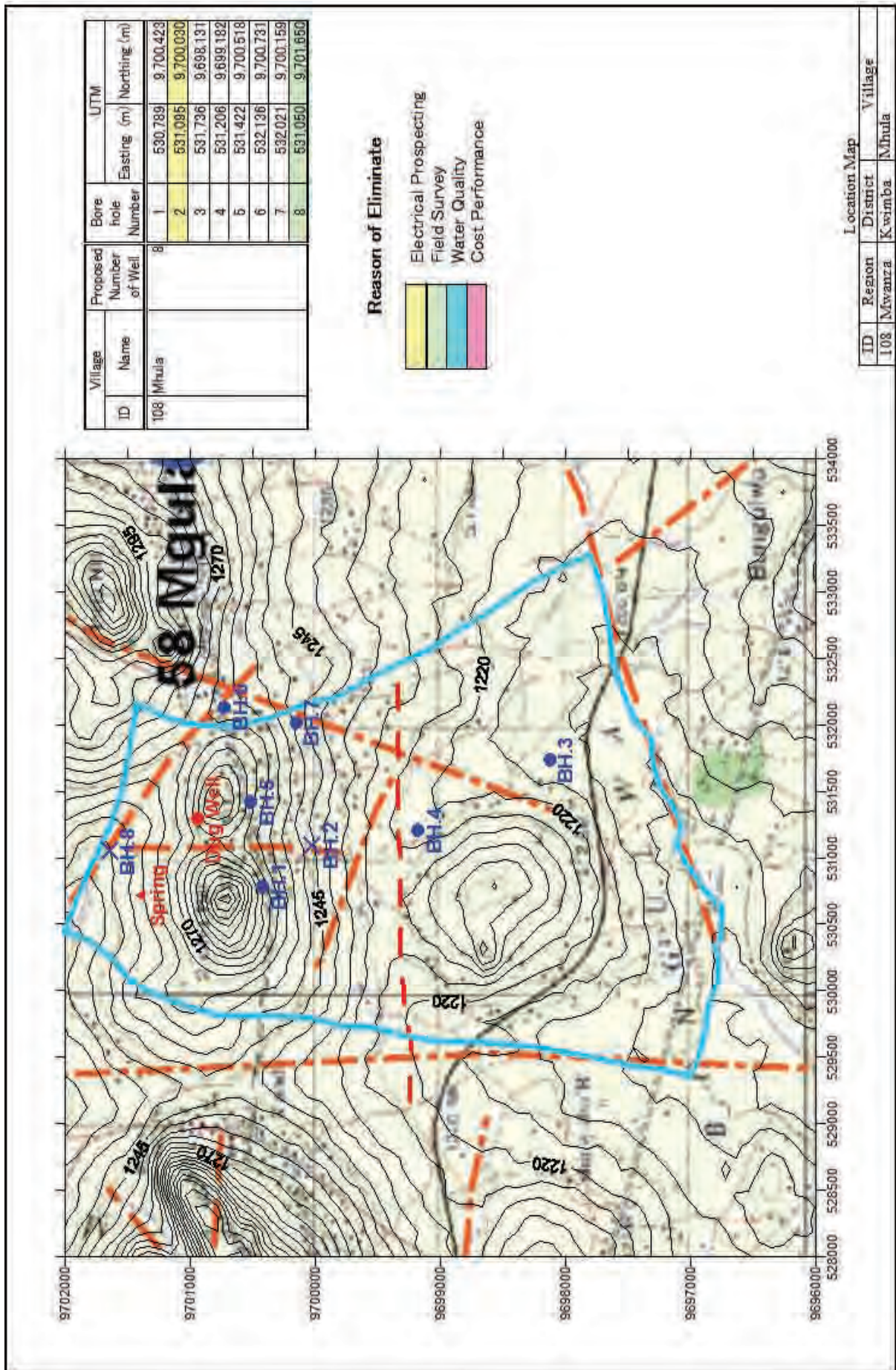


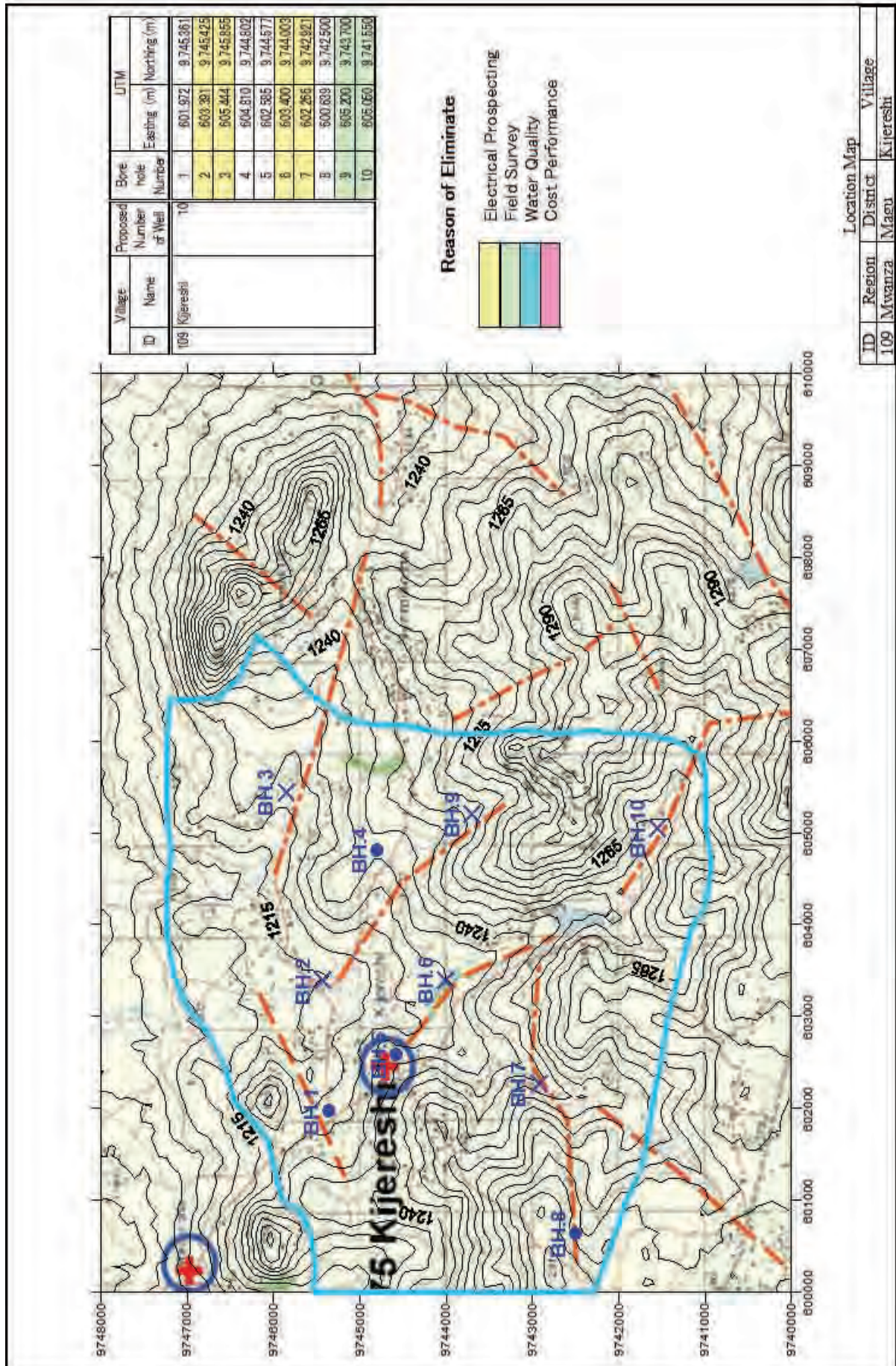


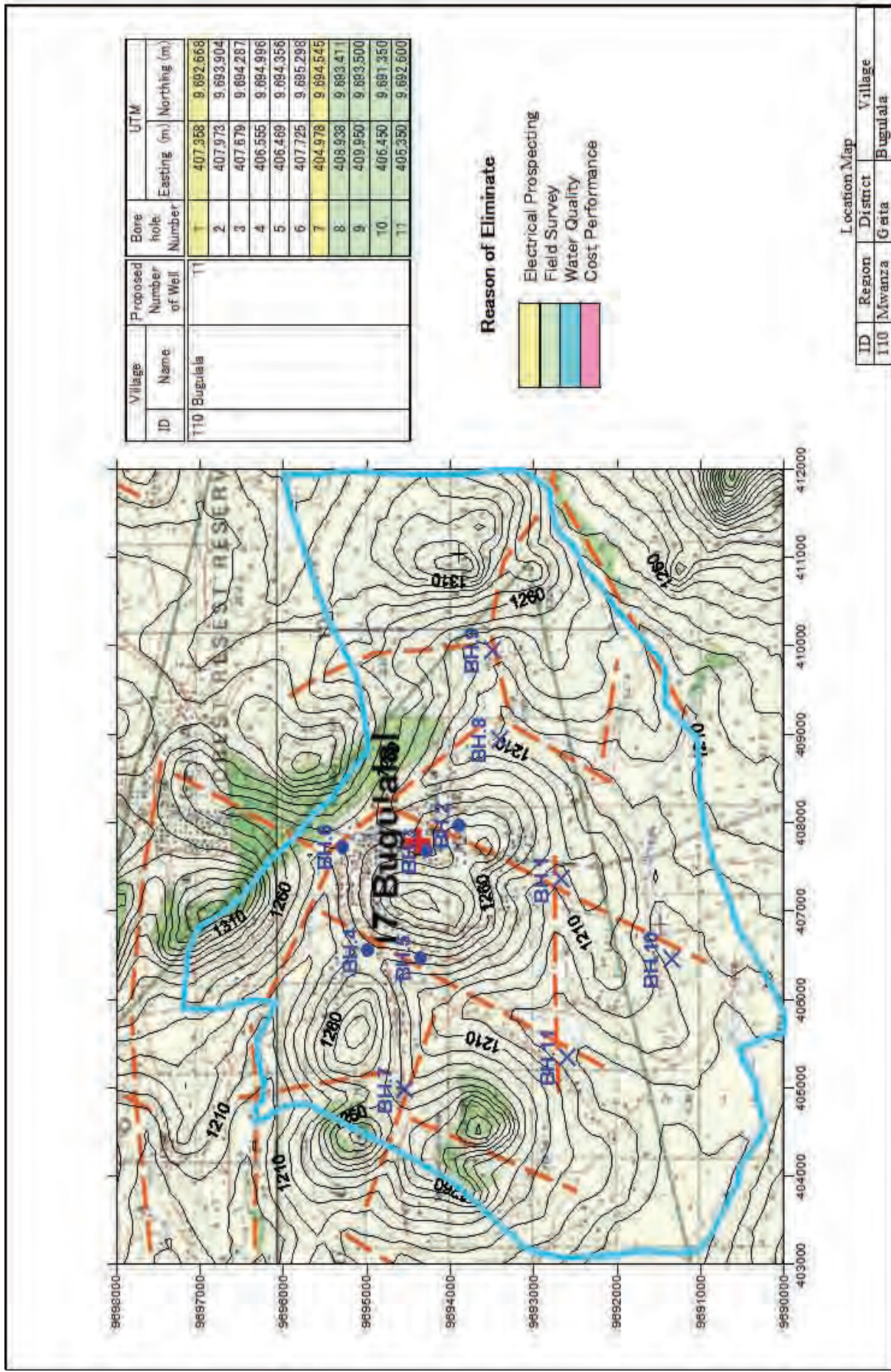


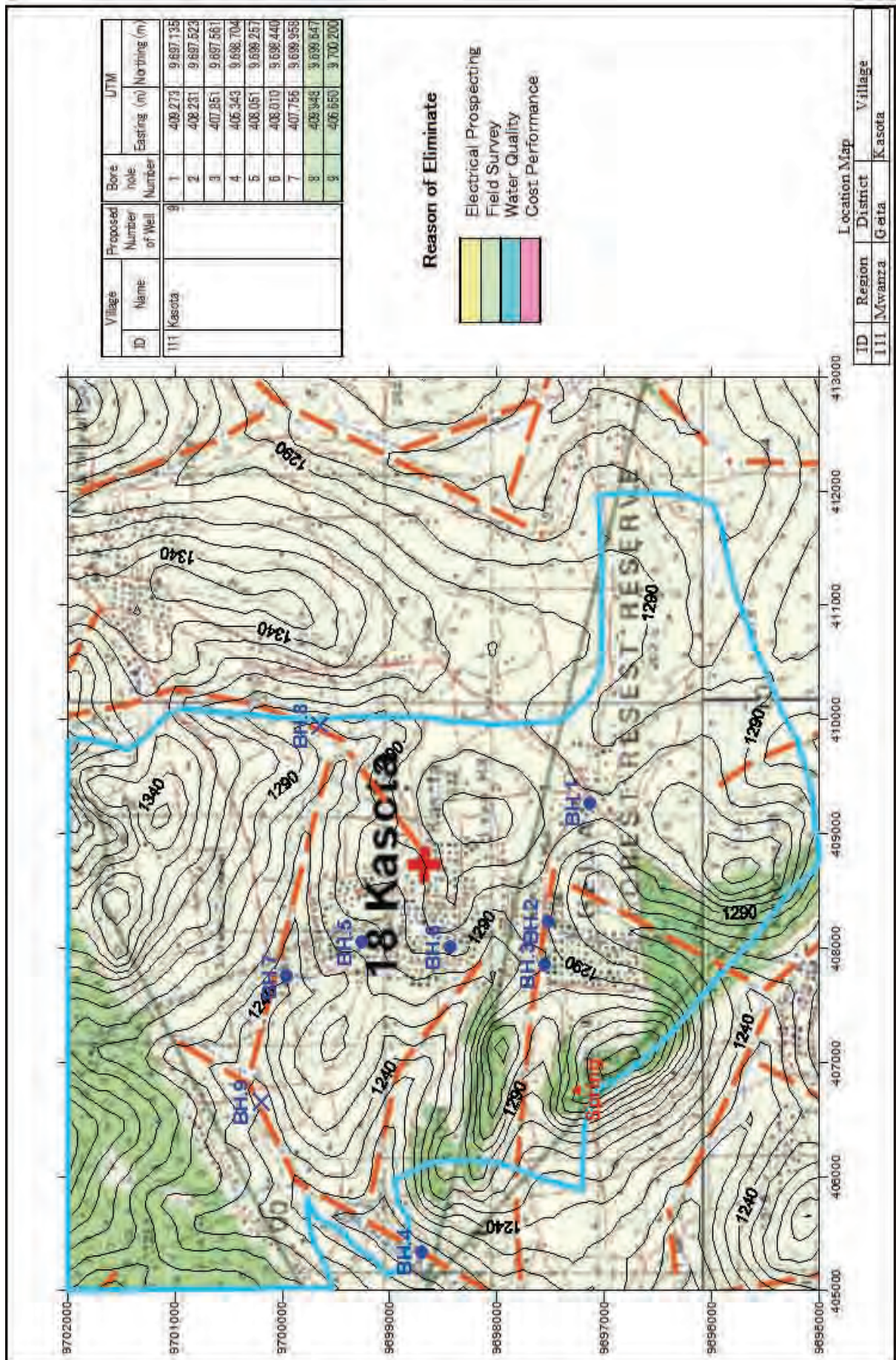
Village		Proposed Number of Well	Bore hole Number	UTM	
ID	Name			Easting (m)	Northing (m)
106	Magulukenda	8	1	424.958	9.719.062
			2	424.745	9.718.037
			3	425.973	9.720.216
			4	426.625	9.720.673
			5	425.471	9.721.702
			6	425.011	9.721.771
			7	426.832	9.719.137
			8	425.850	9.718.350

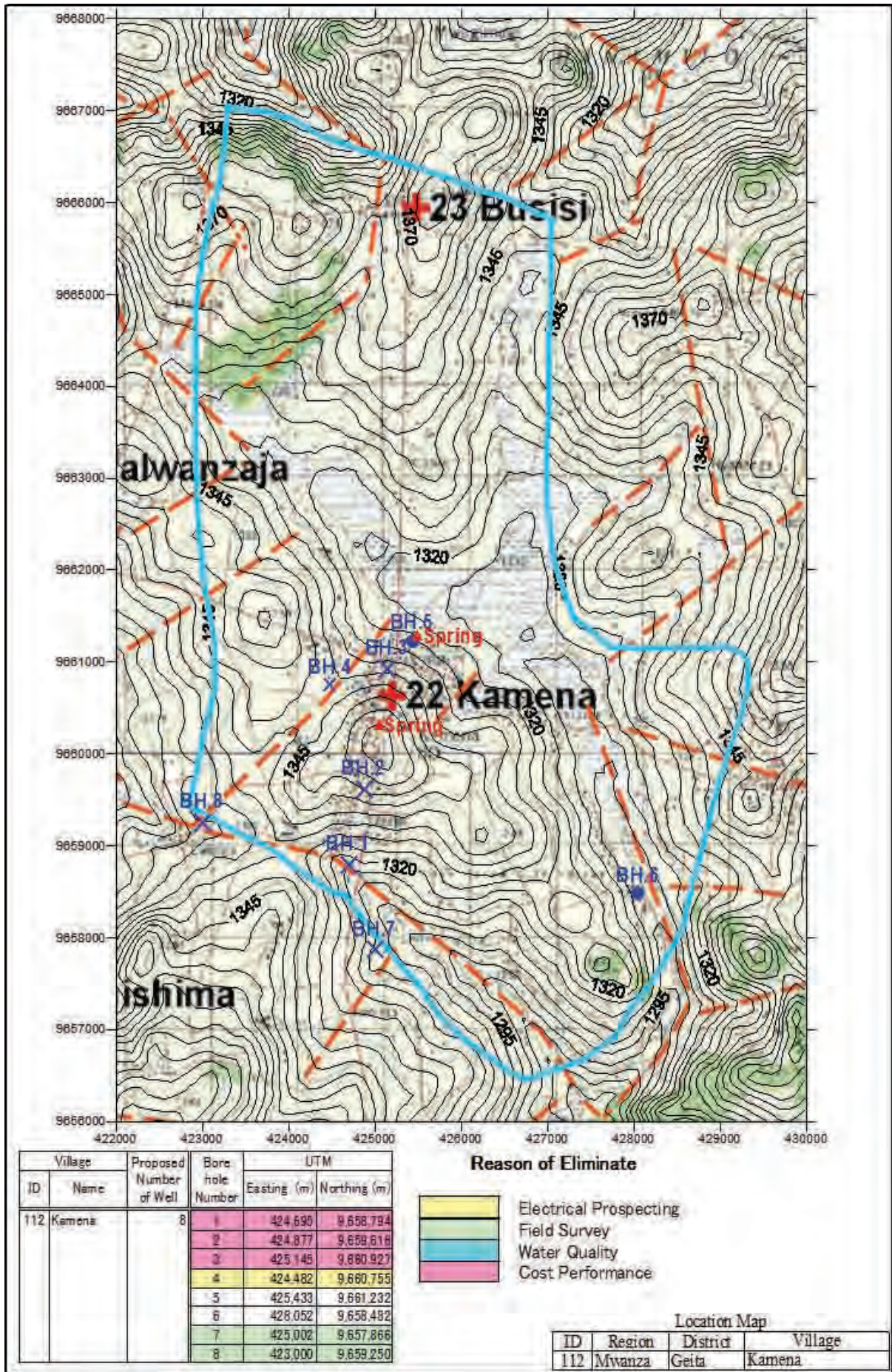












Village	Proposed Number of Well	Bore hole Number	UTM	
			Easting (m)	Northing (m)
112 Kamena	8	1	424 690	9 658 794
		2	424 877	9 658 618
		3	425 145	9 680 927
		4	424 482	9 660 755
		5	425 433	9 661 232
		6	428 052	9 658 482
		7	425 002	9 657 866
		8	423 000	9 659 250

