

Attachment-1(7)

Brochure on the Study



Work Schedule (First Year)

Work Period / Work Item	FY2006											
	First Year											
	Jun	Jul	Aug	Sep	Oct	Nov	Dec	Jan	Feb	Mar		
	Phase 1											
	Pre- para- tory Work	First Field Work										First Home Office Work in Japan
1 Preparatory Work in Japan												
[1-1] Study on Plan of Operation (Scope, Study Contents, Methods, Schedule and Technology Transfer Methods)												
[1-2] Preparation of Overall Study Plan												
[1-3] Preparation of Inception Report (Draft)												
[1-4] Finalization of Inception Report												
2 First Field Work in Ghana												
[2-1] Explanation and Discussion on Inception Report												
[2-2] Exchange of Views with Donor Agencies												
[2-3] Confirmation of Policy Plans												
[2-4] Preparation of Brochure on the Study												
[2-5] Collection and Analyses of Existing Data and Information												
[2-6] Baseline Survey and Analyses on Rice Production and Post-harvest Activities												
[2-7] Baseline Survey and Analyses on Rice Marketing System												
[2-8] Analyses on Development Constraints and Potentials for Promotion of Domestic Rice												
[2-9] Preparation of Progress Report (1)												
[2-10] Workshop for Participatory Problem Analyses												
[2-11] Supplementary Survey and Study												
[2-12] Prioritization of Targets and Preparation of Draft Master Plan												
[2-13] Preparation of Technology Transfer Program												
3 First Home Office Work in Japan												
[3-1] Preparation of Interim Report												
[3-2] Finalization of Interim Report												


JICA Ghana Office

Millennium Heights building, 4th Floor,

P.O.Box 6402 Accra – North, Ghana

Tel (233-21) 774903 / 771354 / 446080 / 760781-2 Fax (233-21) 760954

URL: <http://www.jica.go.jp>



Japan International Cooperation Agency

Ministry of Food and Agriculture
Republic of Ghana

THE STUDY ON THE PROMOTION OF DOMESTIC RICE IN THE REPUBLIC OF GHANA

The objectives of the Study are:

- (1) To make policy recommendations and plan actions to improve rice production. Aspects to be covered will include post-harvesting and marketing through improving the competitiveness of rice production in Ghana.
- (2) To carry out technology transfer to Ghanaian counterpart personnel through on-the-job training in the course of the Study.

The Study Area:

The Master Plan(s) will cover the whole area of the Republic of Ghana. The Action Plan(s) will cover priority area(s) that will be established in the Master Plan(s).

Scope of the Study:

The Study will be undertaken over 24 months from June 2006 to May 2008. The Study will consist of two phases;

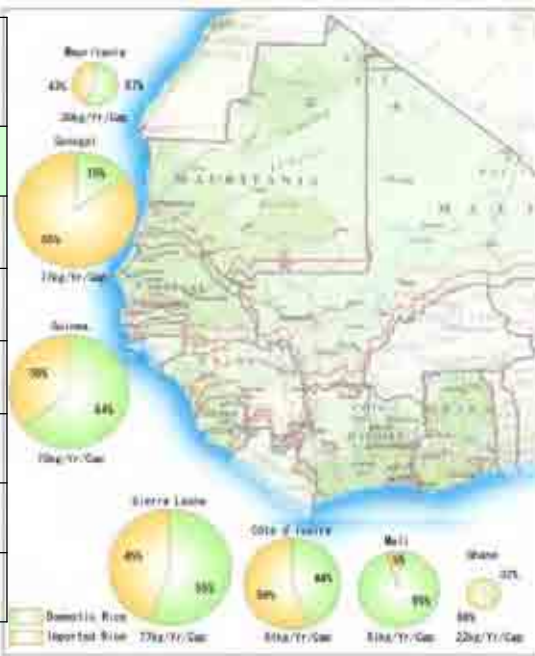
- Phase 1 (Master Plan Formulation) June 2006 to March 2007 (around 10 months)
- Phase 2 (Action Plan Formulation) April 2007 to May 2008 (around 14 months)

Basic Study Approaches

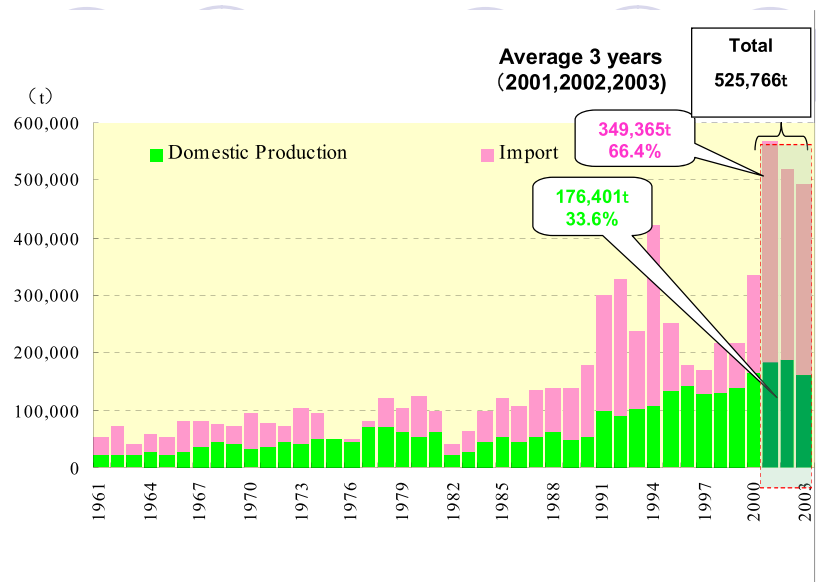
- (1) Formulation of Master Plan and associated Action plan aiming at quick effect for poverty alleviation and promotion of domestic rice development
- (2) Selection of appropriate development approaches to meet local conditions of rice producing areas
- (3) Practical and effective technology transfer and creation of ownership of the plans by stakeholders by using participatory planning methods
- (4) Roles of baseline study considering Food and Agriculture Sector Development Policy and Ghana Poverty Reduction Strategies-II

Country	Area harvested (1,000ha)	Production (Rice) (1,000t)	Unit yield (t/ha)	Gross Consumption (Rice) (1,000t)	Population (1,000)
Ghana	117	159	2.0	453	20,467
Sierra Leone	210	176	1.3	381	5,732
Senegal	87	154	2.6	774	10,580
Mauritania	17	51	4.5	85	2,912
Mali	406	625	2.3	664	11,626
Guinea	525	600	1.7	637	9,030
Togo	35	45	1.9	95	5,429

Source :FAOSTAT

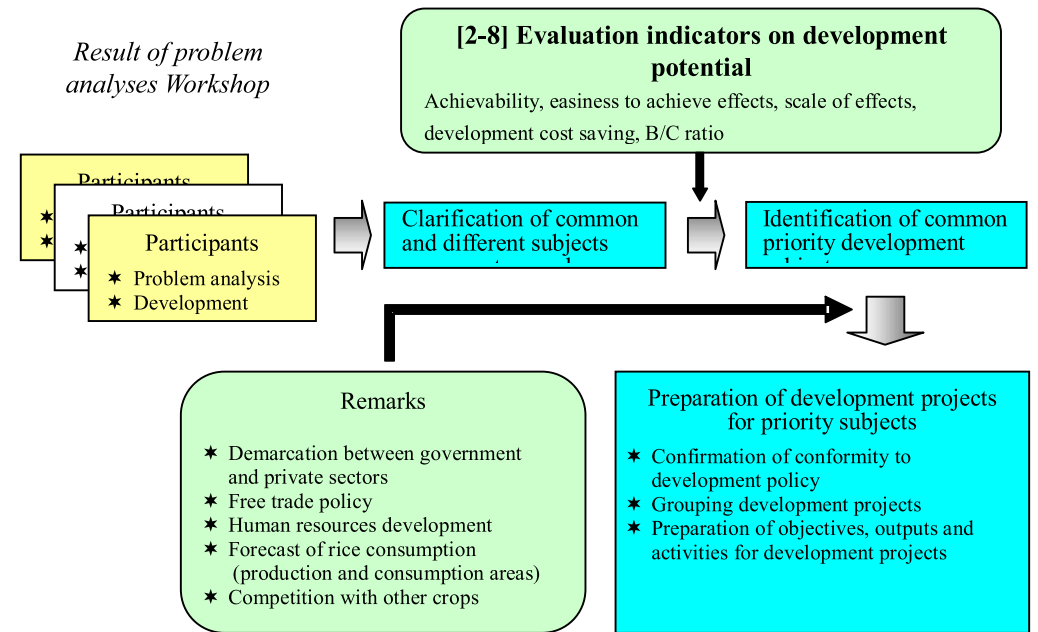


Production of Rice in West Africa

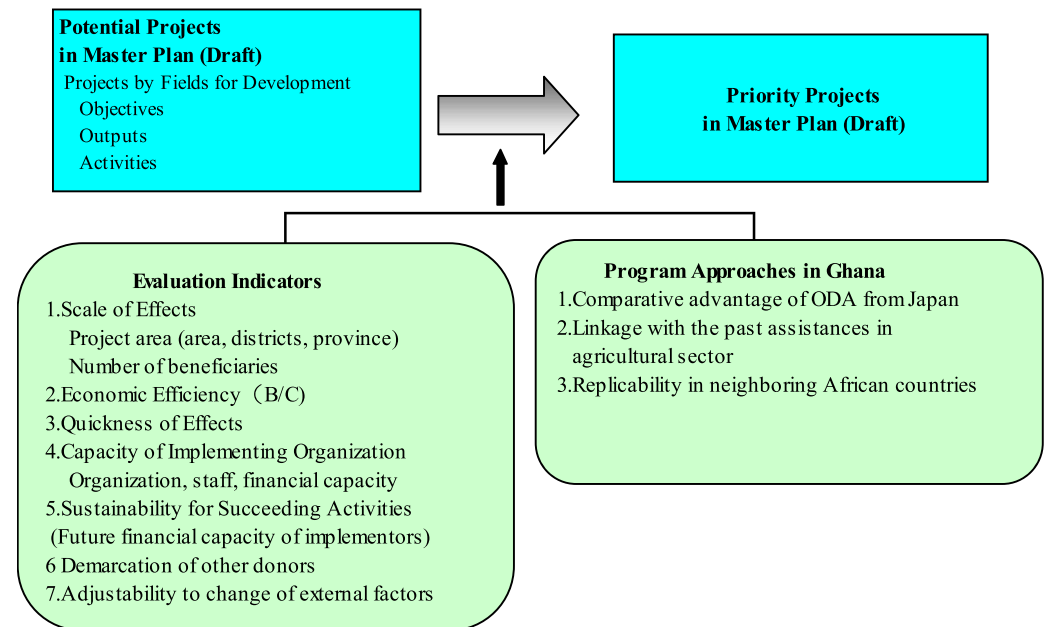


Domestic Production and Import of Rice

Result of problem analyses Workshop



Work flow for preparation of the Master Plan (draft)



Prioritization for Projects in Master Plan (Draft)