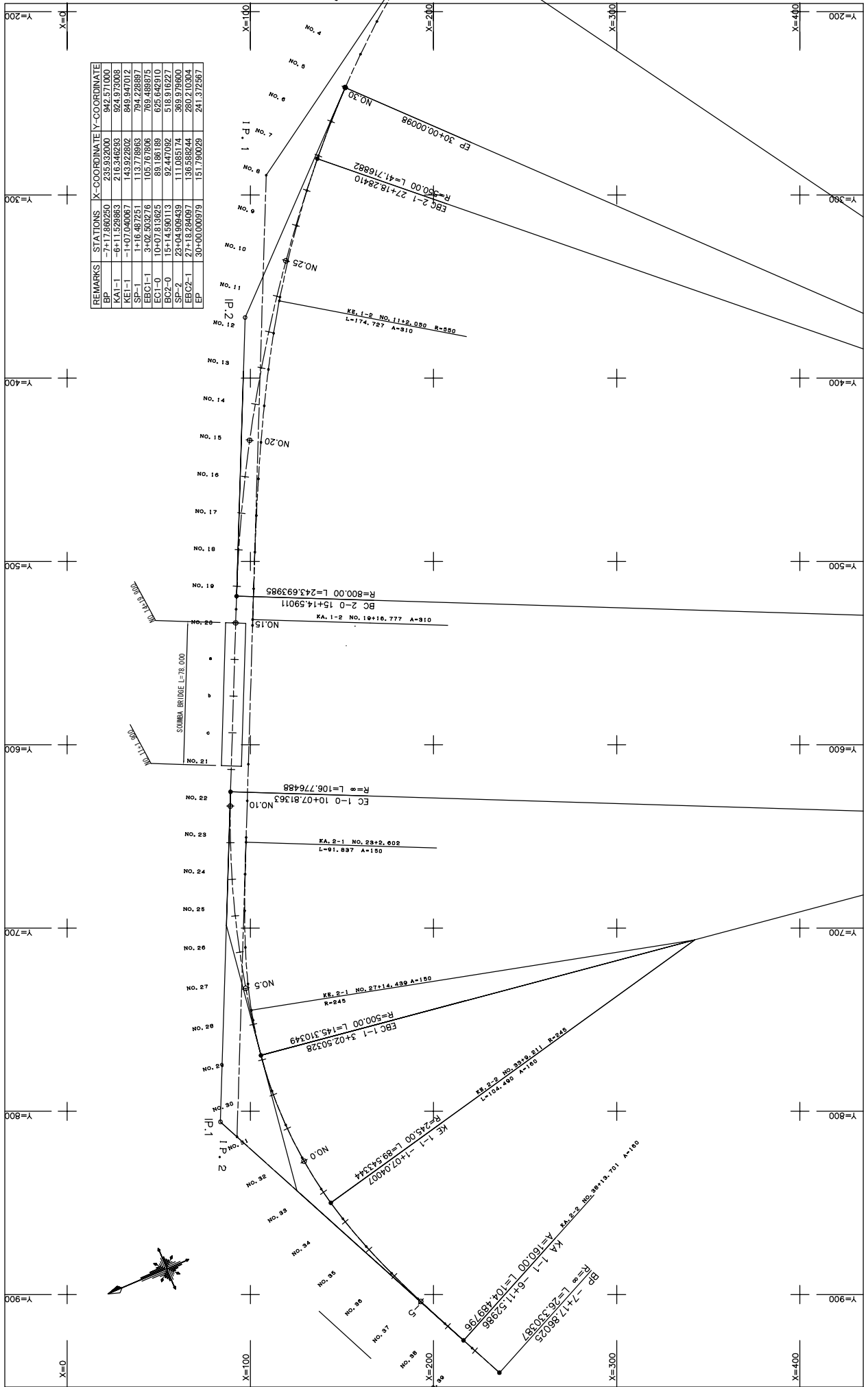
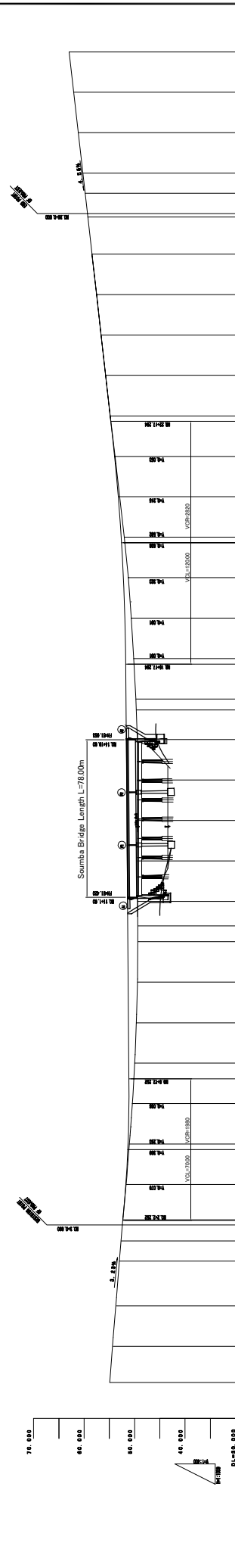
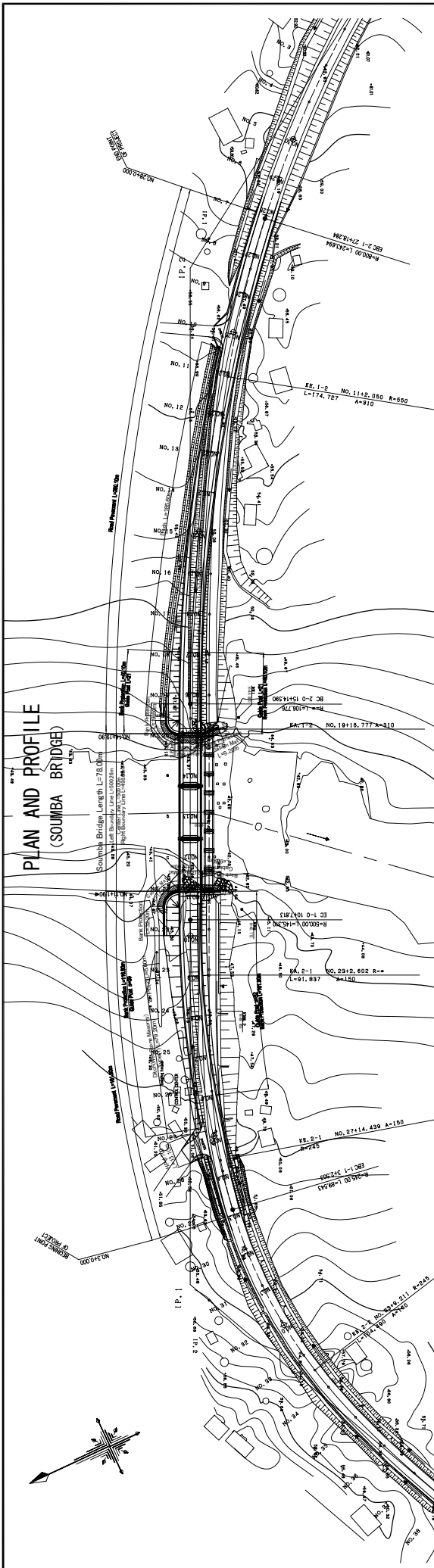


COORDINATION DRAWING
(SOMBA BRIDGE)



REMARKS	STATIONS	X-COORDINATE	Y-COORDINATE
BP	0+00	218.92400	82.25100
KA-1	6+11.82690	82.25100	82.25100
KA-1	140.7040687	143.92262	86.947012
SP-1	1+16.487251	113.776863	794.228397
EBG1-1	3+02.503276	105.767806	769.489875
EC1-0	10+07.813625	88.186189	625.642910
EC2-0	15+14.590113	92.447092	518.916227
SP-2	23+04.909493	111.065174	369.979600
EBG2-1	27+18.284087	136.582444	280.210304
EP	30+00.000998	151.790029	241.372867

MINISTRY OF PUBLIC WORKS, URBANIZATION AND HABITAT	ROAD INVESTMENT DEPARTMENT	NATIONAL ROADS IN THE REPUBLIC OF GUINEA	JAPAN INTERNATIONAL COOPERATION AGENCY KATAHIRA & ENGINEERS INTERNATIONAL	COORDINATION DRAWING	SCALE: S=1:1000 DRAWING No: S-2
--	----------------------------	--	--	----------------------	------------------------------------



STATION	GROUND ELEVATION	PAVEMENT HEIGHT	GROUND HEIGHT	INTERVAL
NO. 0	20.000	54.239	54.239	
NO. 1	20.000	53.889	53.889	
NO. 2	20.000	52.826	52.826	
NO. 3	20.000	52.248	52.248	
IBC-2	2.503	52.108	52.108	
NO. 4	17.497	51.535	51.535	
NO. 5	17.288	51.584	51.584	
NO. 6	20.000	50.305	51.151	
NO. 7	20.000	49.810	51.174	
NO. 8	20.000	48.830	51.234	
NO. 9	20.000	47.800	51.294	
NO. 10	20.000	46.700	51.364	
BC-2-0	7.813	51.377	51.377	
NO. 11	12.187	46.300	51.414	
NO. 12	20.000	45.145	51.474	
NO. 13	20.000	45.233	51.534	
NO. 14	20.000	45.086	51.594	
NO. 15	20.000	44.560	51.654	
EC-1-0	14.590	51.697	51.697	
NO. 16	5.410	47.810	51.714	
NO. 17	20.000	47.780	51.775	
NO. 18	20.000	46.680	51.825	
NO. 19	20.000	45.980	52.18	
NO. 20	20.000	45.100	52.25	
NO. 21	20.000	42.460	53.225	
NO. 22	20.000	43.810	53.941	
NO. 23	20.000	44.805	54.799	
NO. 24	20.000	45.726	55.709	
NO. 25	20.000	46.620	56.619	
NO. 26	20.000	47.512	57.529	
NO. 27	20.000	48.445	58.439	
NO. 28	1.716	49.349	59.349	
NO. 29	20.000	50.242	60.242	
NO. 30	20.000	51.164	61.164	
NO. 31	20.000	52.071	62.071	
NO. 32	20.000	52.980	62.980	

ROAD INVESTMENT DEPARTMENT
MINISTRY OF PUBLIC WORKS, URBANIZATION AND HABITAT

BASIC DESIGN ON THE PROJECT FOR
REHABILITATION OF BRIDGES ON ARTERIAL
NATIONAL ROADS IN THE REPUBLIC OF GUINEA

JAPAN INTERNATIONAL COOPERATION AGENCY
KATAHIRA & ENGINEERS INTERNATIONAL

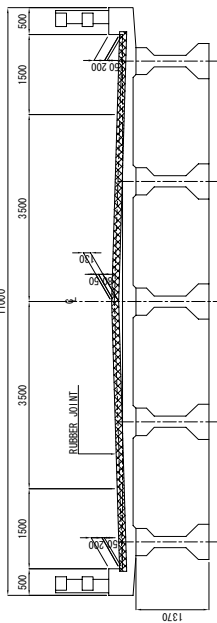
TITLE: SOUMBA BRIDGE
PLAN AND PROFILE

SCALE: H=1:1000
V=1:400

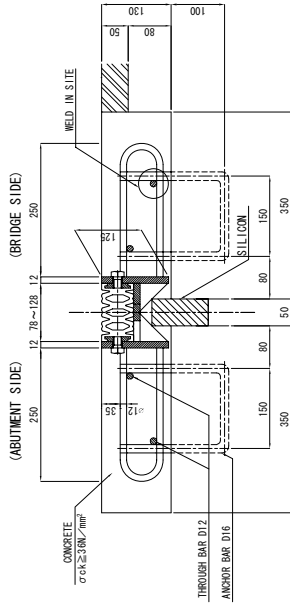
DRAWING No: S-3

DETAILS OF EXPANSION JOINT AND DRAINAGE (SOUNBA BRIDGE)

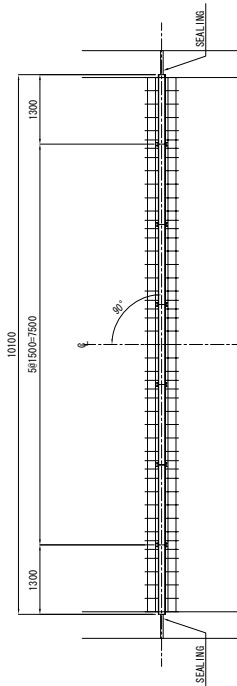
SECTION SCALE 1:50



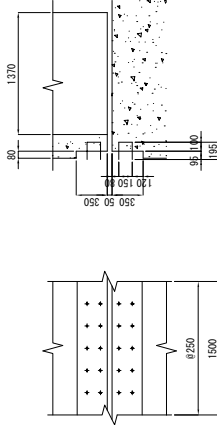
CROSS SECTION SCALE 1:5
RUBBER JOINT FOR ROADWAY



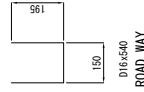
PLAN SCALE 1:50



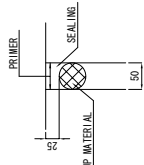
ANCHOR BAR UNDER CONCRETE SCALE 1:30



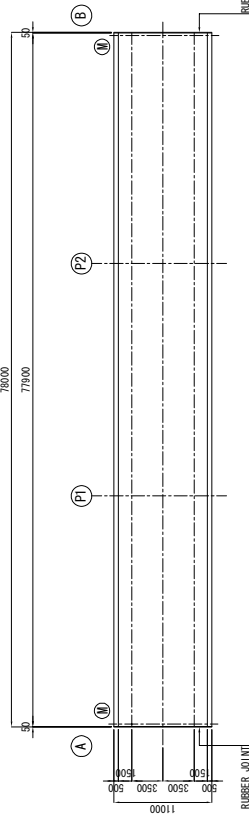
ANCHOR BAR SCALE 1:10



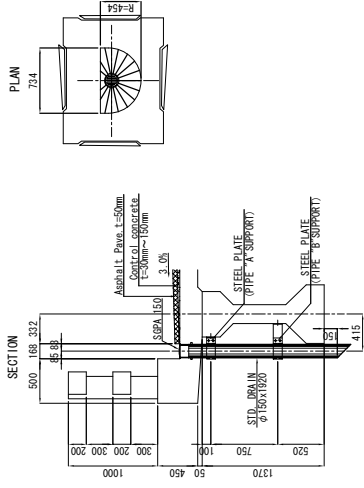
SEALING SCALE 1:5



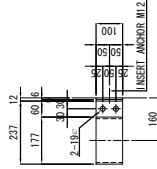
MARKING DIAGRAM SCALE 1:300



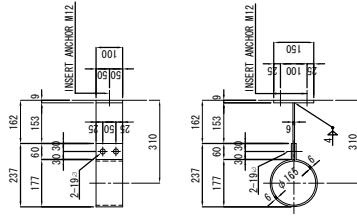
DRAINAGE SCALE 1:30



"A" SUPPORT SCALE 1:10



"B" SUPPORT SCALE 1:10



- 2-PL 100x6x651 (SS400)
- 1-PL 100x6x213 (SS400)
- 1-PL 100x6x150
- 2-RN M16x40 (SS400)
- 2-INSERT ANCHOR M12 (SS400)

- 2-PL 100x6x651 (SS400)
- 1-PL 100x6x 66 (SS400)
- 1-PL 100x6x150
- 2-RN M16x40 (SS400)
- 2-INSERT ANCHOR M12 (SS400)

MATERIAL OF EXPANSION JOINT

MATERIAL	QUALITY	QUANTITY		REMARKS
		④	⑤	
RUBBER JOINT FOR ROADWAY	SS400 COMPOSITE RUBBER SR235 SD295	10.10 m	10.10 m	ROADWAY
SEALING	SILICON	1.8 liter	1.8 liter	3.6 liter

ANCHOR BAR

SIZE	QUANTITY		WEIGHT		REMARKS
	④	⑤	TOTAL	TOTAL	
D16x540	70	70	140	0.852 kg	ROADWAY

BASIC DESIGN ON THE PROJECT FOR
REHABILITATION OF BRIDGES ON ARTERIAL
NATIONAL ROADS IN THE REPUBLIC OF GUINEA

ROAD INVESTMENT DEPARTMENT
MINISTRY OF PUBLIC WORKS, URBANIZATION AND HABITAT

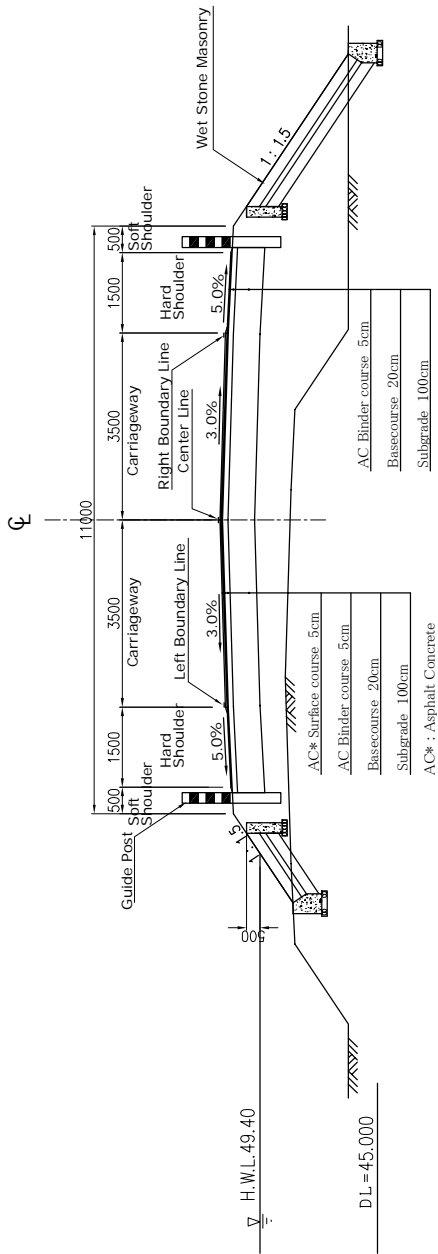
JAPAN INTERNATIONAL COOPERATION AGENCY
KATAHIRA & ENGINEERS INTERNATIONAL

TITLE: SOUNBA BRIDGE
DETAILS OF EXPANSION JOINT AND DRAINAGE

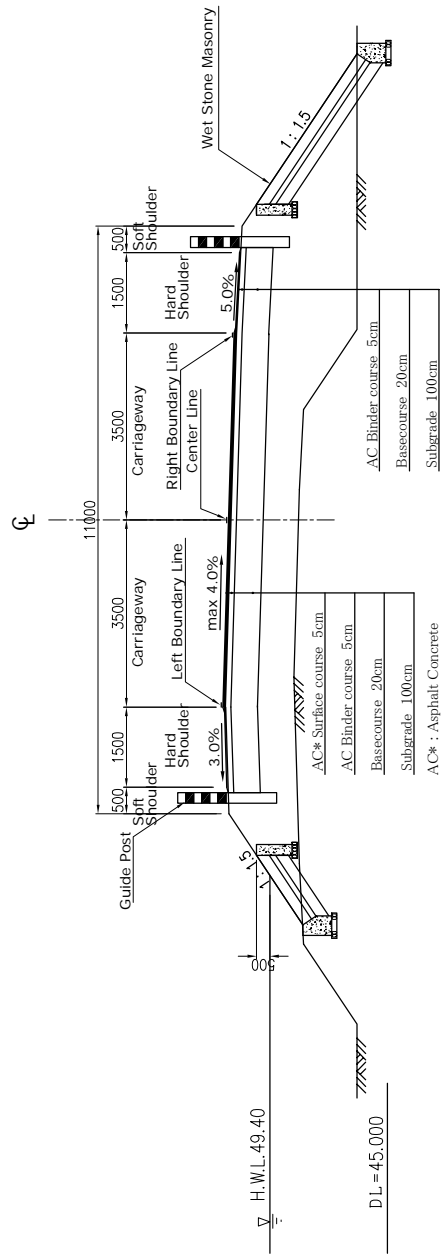
SCALE: S=1:5
DRAWING No: S-6

TYPICAL CROSS SECTION OF APPROACH ROAD
(SOUNBA BRIDGE)

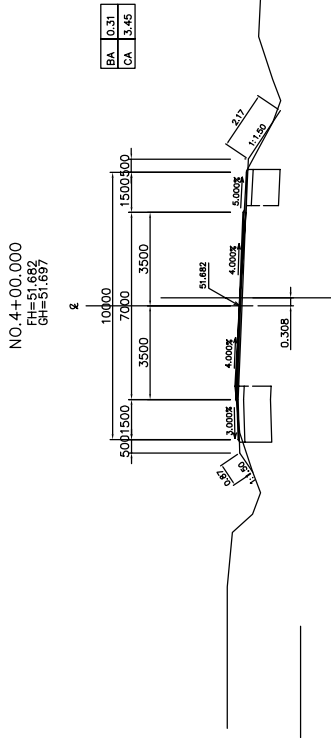
GENERAL SECTION



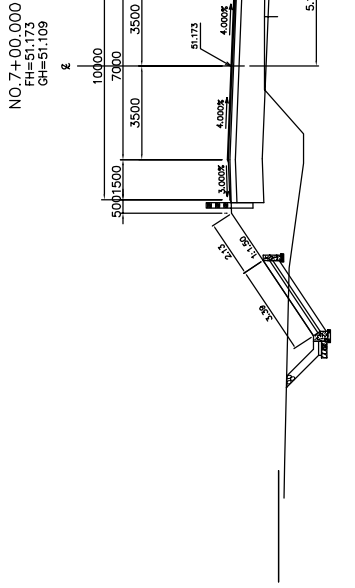
SUPERELEVATED SECTION



CROSS SECTIONS OF ROAD (1) (SOUNBA BRIDGE)

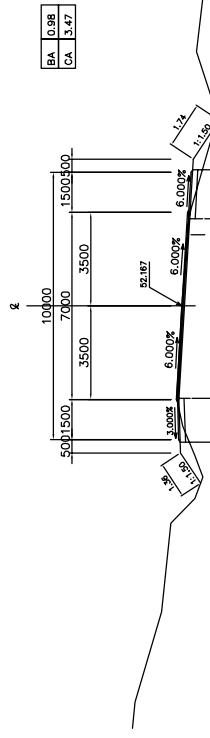


DL=45.00

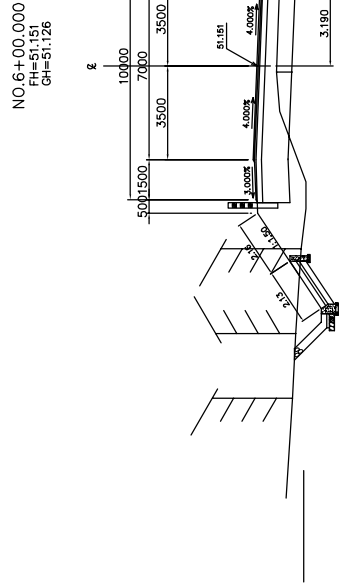


DL=45.00

EBC 1-1 (NO. 3+02.503)

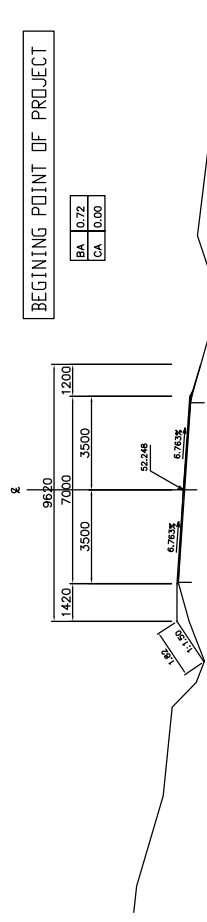


DL=45.00

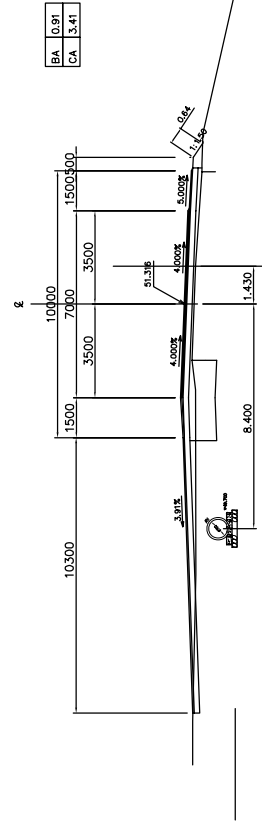


DL=45.00

NO. 3+00.000
FH=52.248
GH=52.249



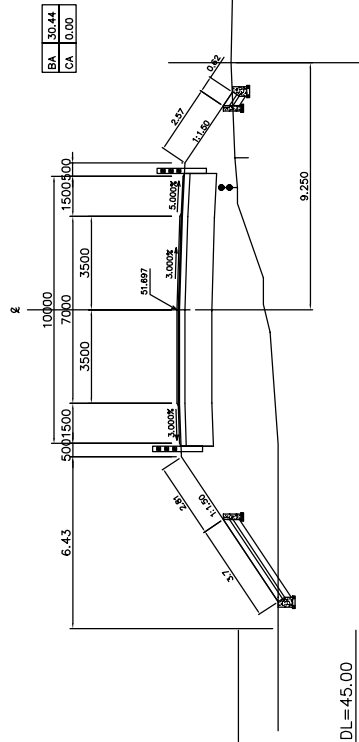
NO. 5+00.000
FH=51.316
GH=51.322



ROAD INVESTMENT DEPARTMENT MINISTRY OF PUBLIC WORKS, URBANIZATION AND HABITAT	BASIC DESIGN ON THE PROJECT FOR REHABILITATION OF BRIDGES ON ARTERIAL NATIONAL ROADS IN THE REPUBLIC OF GUINEA	JAPAN INTERNATIONAL COOPERATION AGENCY KATAHIRA & ENGINEERS INTERNATIONAL	TITLE: SOUNBA BRIDGE CROSS SECTIONS OF ROAD (1) (NO. 3+00 - NO. 7+00)
		SCALE: S=1:100	DRAWING No: S-11

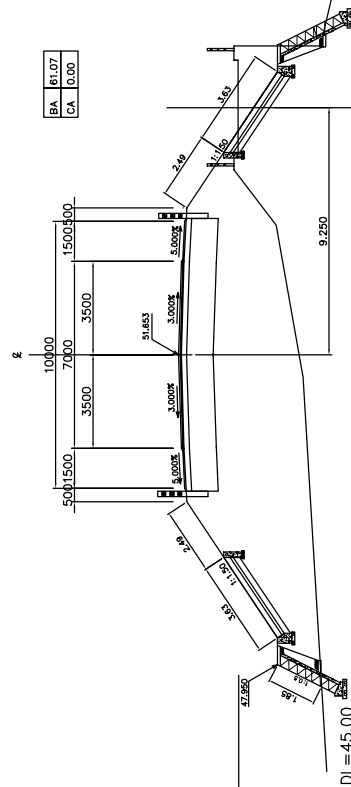
CROSS SECTIONS OF ROAD (3) (SOUNBA BRIDGE)

BC 2-0(NO.15+14.590)
FH=51.697
GH=51.633



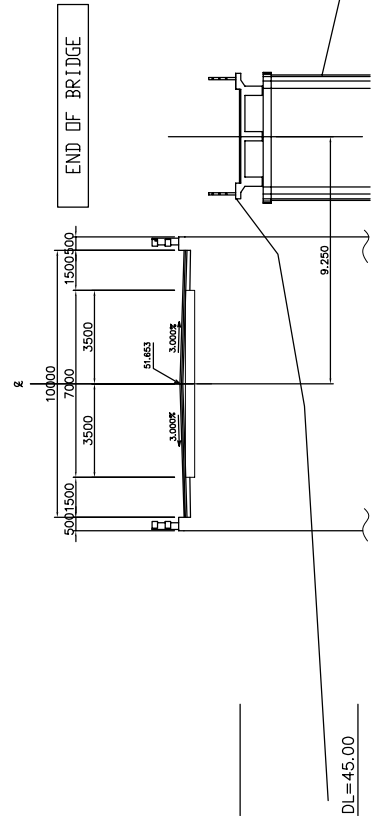
DL=45.00

NO.15+0.000
FH=51.654
GH=51.389



DL=45.00

NO.14+19.900
FH=51.653
GH=51.589



DL=45.00

ROAD INVESTMENT DEPARTMENT
MINISTRY OF PUBLIC WORKS, URBANIZATION AND HABITAT

BASIC DESIGN ON THE PROJECT FOR
REHABILITATION OF BRIDGES ON ARTERIAL
NATIONAL ROADS IN THE REPUBLIC OF GUINEA

JAPAN INTERNATIONAL COOPERATION AGENCY
KATAHIRA & ENGINEERS INTERNATIONAL

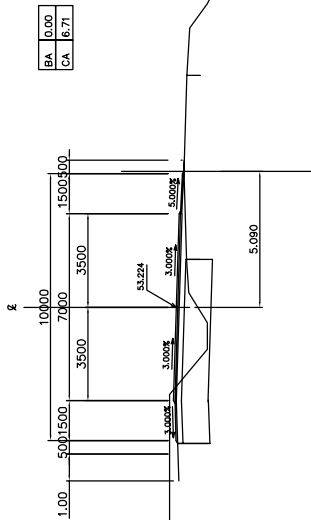
TITLE : SOUNBA BRIDGE
CROSS SECTIONS OF ROAD (3)
(NO. 14+19.90 - NO. 18+0.00)

SCALE :
S=1:100

DRAWING No:
S-13

CROSS SECTIONS OF ROAD (4) (SOUNBA BRIDGE)

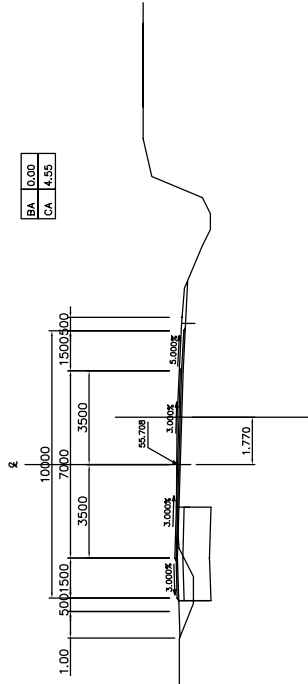
NO. 21+00.000
FH=53.224
GH=53.242



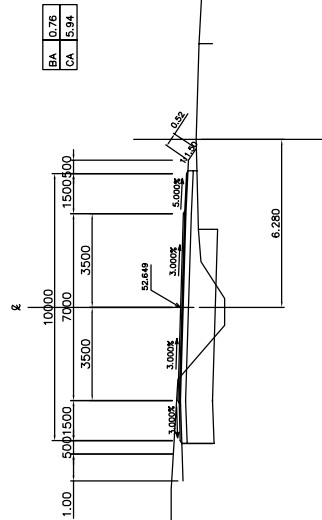
BA	0.00
CA	6.71

BA	0.00
CA	4.35

NO. 24+00.000
FH=55.798
GH=55.743



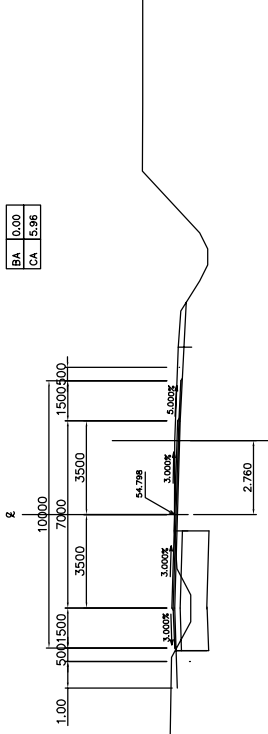
NO. 20+00.000
FH=52.849
GH=52.850



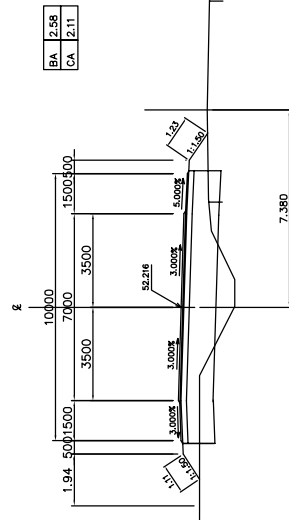
BA	0.76
CA	5.94

BA	0.00
CA	5.96

NO. 23+00.000
FH=54.798
GH=54.841



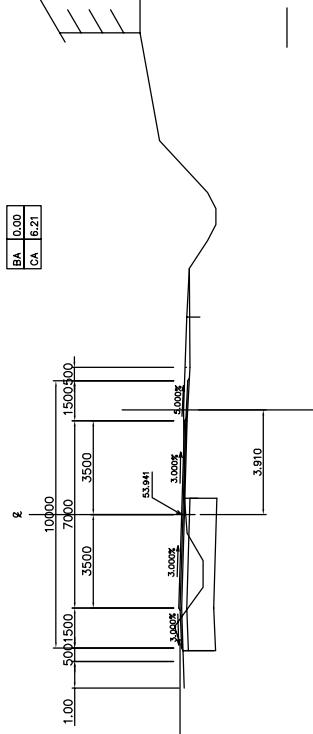
NO. 19+00.000
FH=52.216
GH=52.198



BA	2.58
CA	2.11

BA	0.00
CA	6.21

NO. 22+00.000
FH=53.941
GH=53.974



ROAD INVESTMENT DEPARTMENT
MINISTRY OF PUBLIC WORKS, URBANIZATION AND HABITAT

BASIC DESIGN ON THE PROJECT FOR
REHABILITATION OF BRIDGES ON ARTERIAL
NATIONAL ROADS IN THE REPUBLIC OF GUINEA

JAPAN INTERNATIONAL COOPERATION AGENCY
KATAHIRA & ENGINEERS INTERNATIONAL

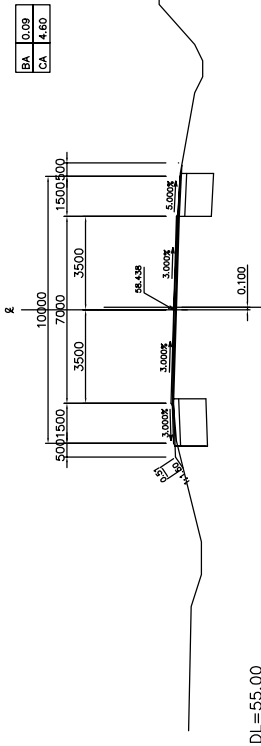
TITLE : SOUNBA BRIDGE
CROSS SECTIONS OF ROAD (4)
(NO. 19+00.00 - NO. 24+00.00)

SCALE :
S=1:100

DRAWING No:
S-14

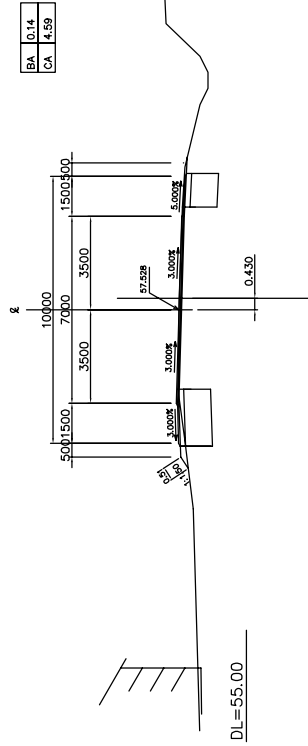
CROSS SECTIONS OF ROAD (5) (SOUNBA BRIDGE)

NO.27+00.000
FH=58.438
GH=58.439



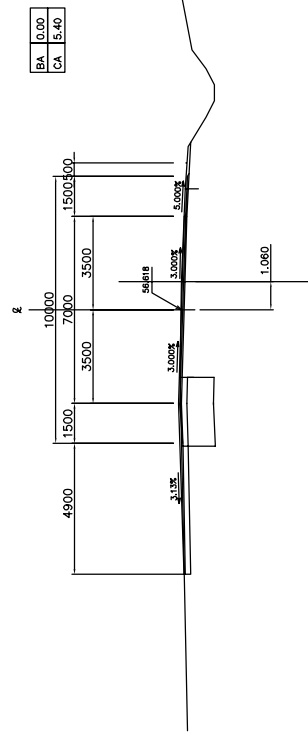
DL=55.00

NO.26+00.000
FH=57.528
GH=57.546



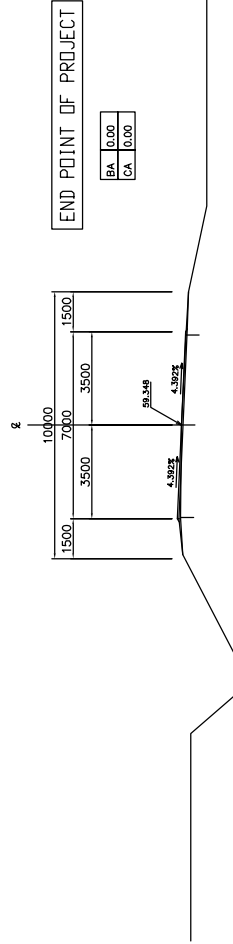
DL=55.00

NO.25+00.000
FH=56.618
GH=56.644



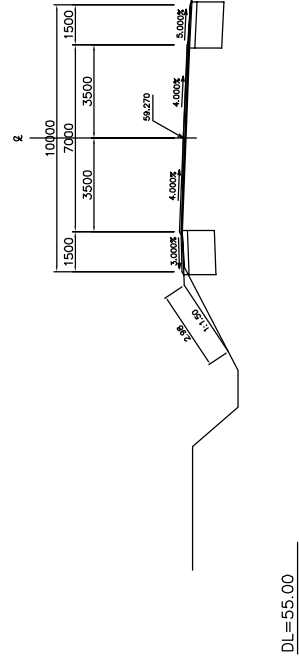
DL=50.00

NO.28+00.000
FH=59.348
GH=59.349



DL=55.00

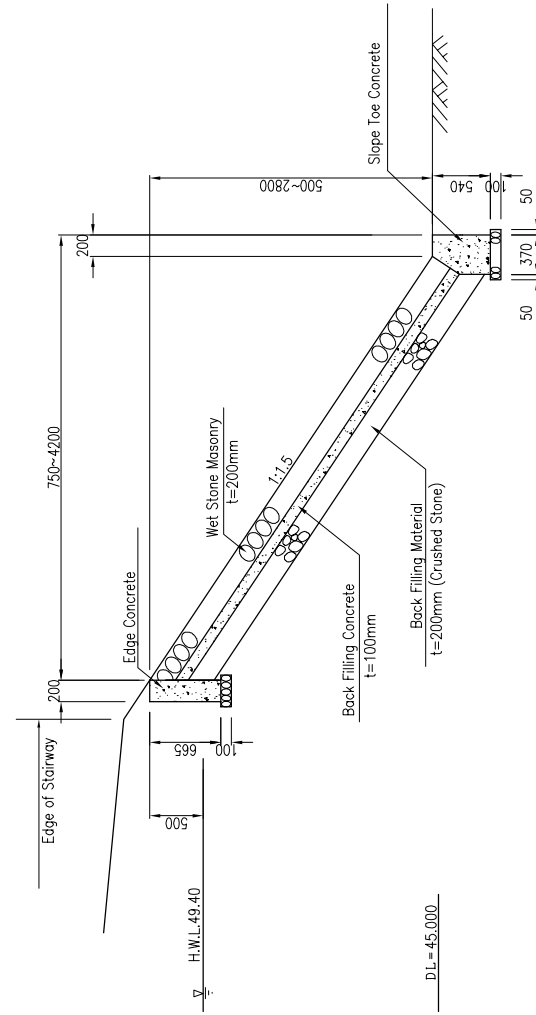
EBC 2-1(NO.27+18.284)
FH=59.270
GH=59.272



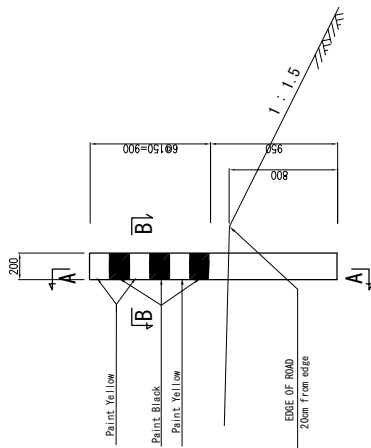
DL=55.00

ROAD INVESTMENT DEPARTMENT MINISTRY OF PUBLIC WORKS, URBANIZATION AND HABITAT	BASIC DESIGN ON THE PROJECT FOR REHABILITATION OF BRIDGES ON ARTERIAL NATIONAL ROADS IN THE REPUBLIC OF GUINEA	JAPAN INTERNATIONAL COOPERATION AGENCY KATAHIRA & ENGINEERS INTERNATIONAL	TITLE :SOUNBA BRIDGE CROSS SECTIONS OF ROAD (5) (NO.25+0.00 - NO.28+0.00)	SCALE : S=1:100	DRAWING No: S-15
--	--	--	---	--------------------	---------------------

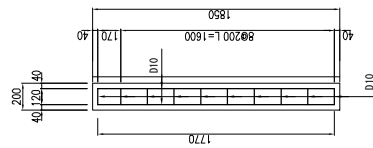
GUIDE POST AND BANK PROTECTION
(SOUNBA BRIDGE)



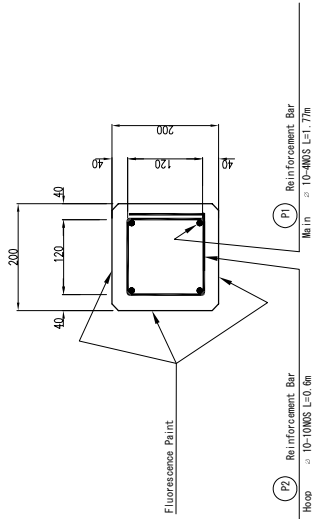
BANK PROTECTION Scale 1:25



GUIDE POST Scale 1:20



DETAIL A-A Scale 1:20



DETAIL B-B Scale 1:5

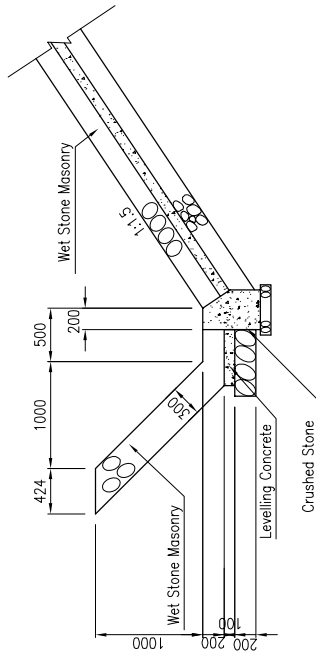
MARK	DIA- METER	LENGTH mm	NO.	WEIGHT/m kg/m	WEIGHT/ZONE kg	WEIGHT	REMARKS
P.1	D.10	1770	4	0.616	1.090	4.4	—
P.2	"	600	10	"	0.370	3.7	—
						8.1	kg

SCHEDULED LIST OF GUIDE POST

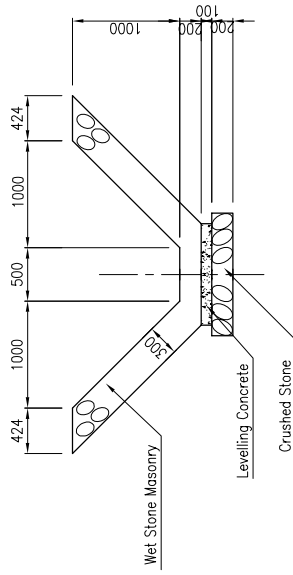
STATION	LEFT SIDE		RIGHT SIDE	
	LENGTH (m)	Number (Nos.)	STATION	LENGTH (m)
6+0.0 to 11+1.9	101.9	52	14+19.9 to 17+0.0	40.1
TOTAL (Left + Right) = 52x2+41x2 = 186 Nos.				21

NOTE: To be installed at the outer side of the curve of 2 meters interval

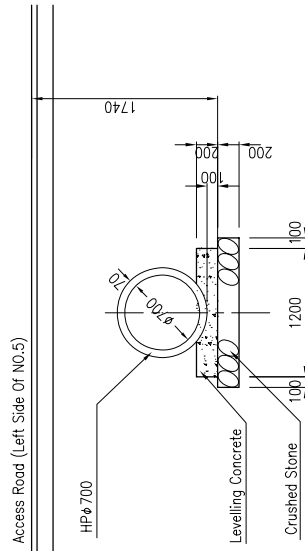
**DITCH AND PIPE CULVERT
(SOUNBA BRIDGE)**



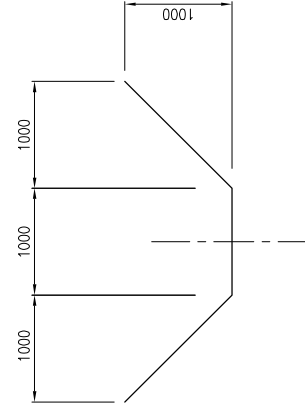
Ditch(Wet Stone Masonry) Type 1



Ditch(Wet Stone Masonry) Type 2



Culvert



Soil Ditch

ROAD INVESTMENT DEPARTMENT
MINISTRY OF PUBLIC WORKS, URBANIZATION AND HABITAT

BASIC DESIGN ON THE PROJECT FOR
REHABILITATION OF BRIDGES ON ARTERIAL
NATIONAL ROADS IN THE REPUBLIC OF GUINEA

JAPAN INTERNATIONAL COOPERATION AGENCY
KATAHIRA & ENGINEERS INTERNATIONAL

TITLE: SOUNBA BRIDGE
DITCH AND PIPE CULVERT

SCALE:
S=1:25

DRAWING No:
S-17

Sheet No.

