

Single Line Diagram

Central



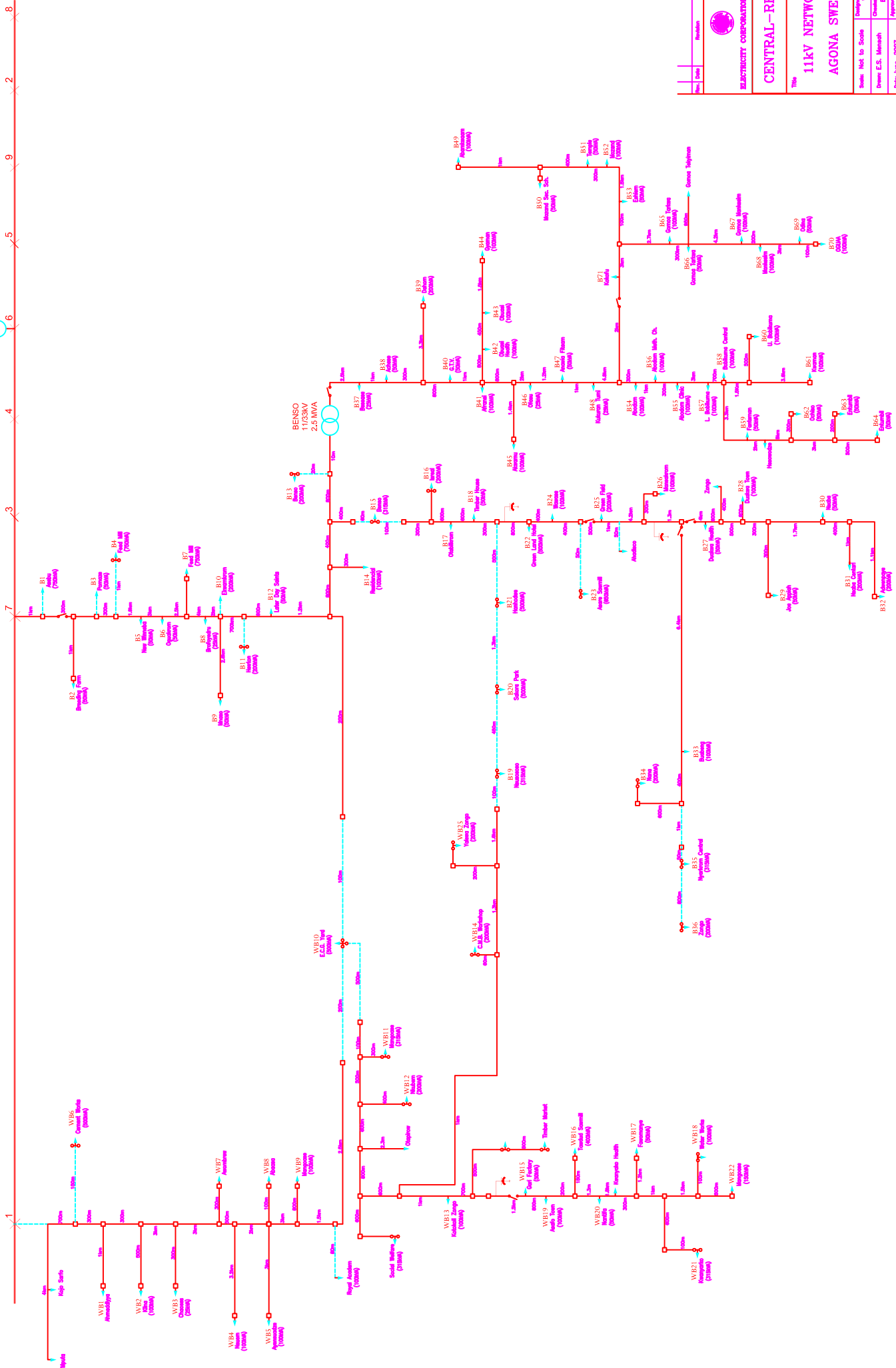


V.R.A. INCOMER

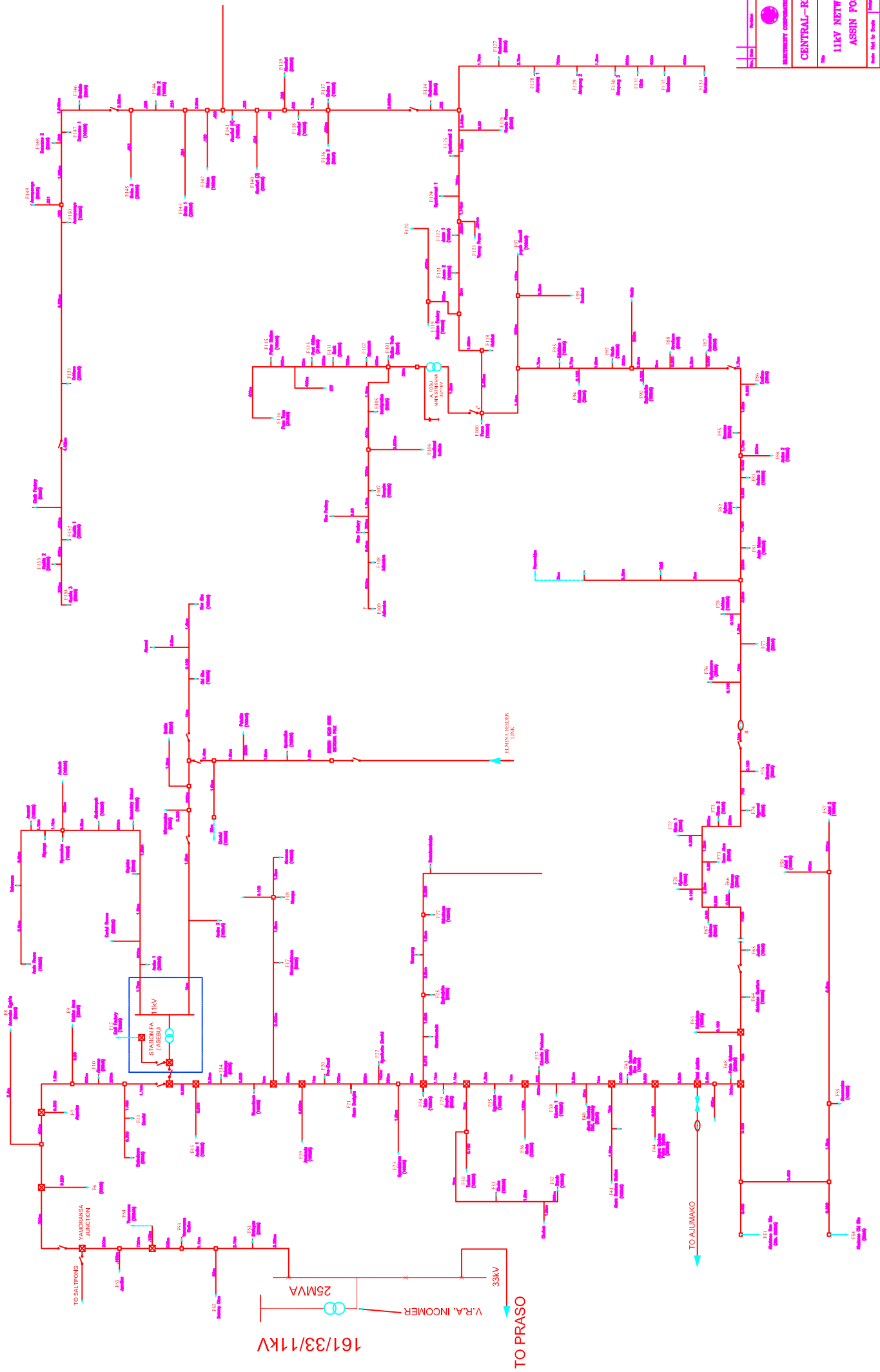
INCOMER (Spare)

SWEDRU 2

SWEDRU 1

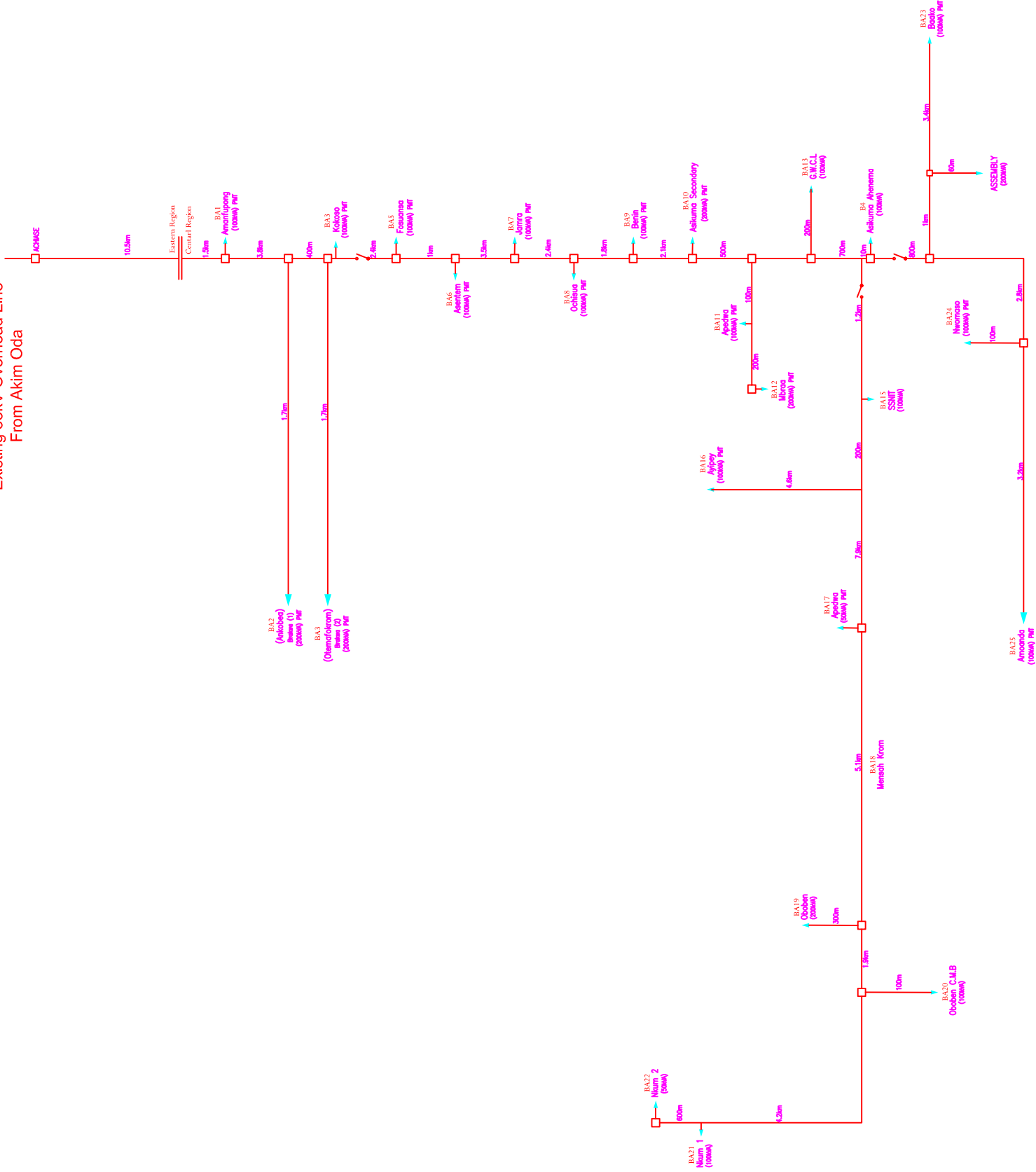


No.	Date	Revision	Drawn	Checked
 <b>ELECTRICITY CORPORATION OF GHANA</b>				
<b>CENTRAL-REGION</b>				
<b>11KV NETWORK</b>				
<b>AGONA SWEDRU</b>				
Scale: Not to Scale				
Drawn: E.S. Mensah				
Checked: R. Agyemang				
Date: June, 2007				
Approved: B. Yeboah				
Drawing No.: D.A. Jorjua				
Rev: _____				

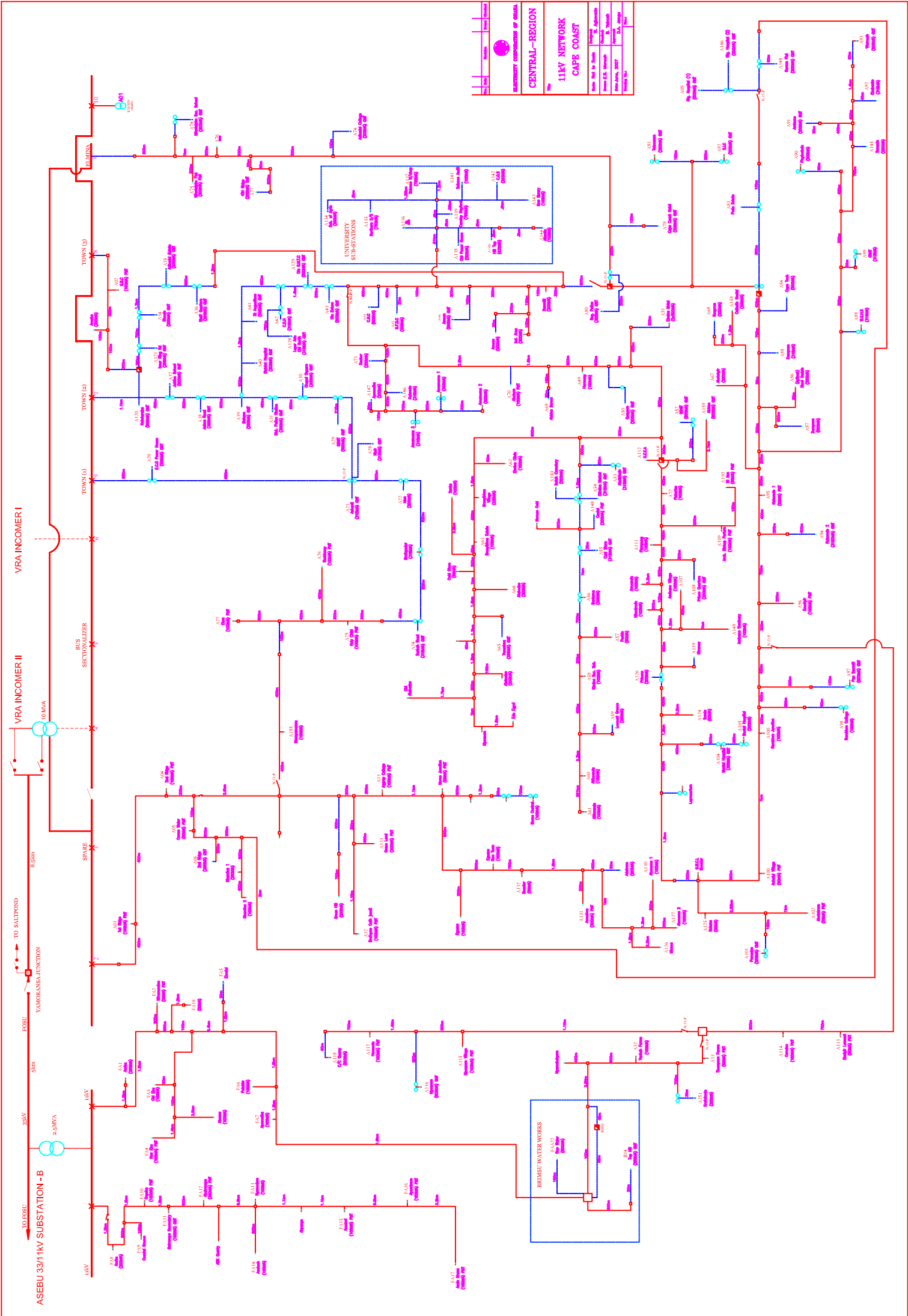


ELECTRICITY CORPORATION OF GHANA  
**CENTRAL-REGION**  
**11KV NETWORK**  
**ASSIN POSU**

Existing 33kV Overhead Line  
From Akim Oda



Map	Scale	Revision	Drawn	Checked
 <b>MINISTRY OF ENERGY OF GHANA</b>				
<b>CENTRAL-REGION</b>				
<b>33KV NETWORK</b>				
<b>BREMAN ASIKUMA</b>				
Made Not to Scale Drawing No. A/Asikuma				
Prepared E.S. Mervah Checked B. Valsarth				
Date Issued, 2027 Prepared by D.A. Janga				
Drawing No.				

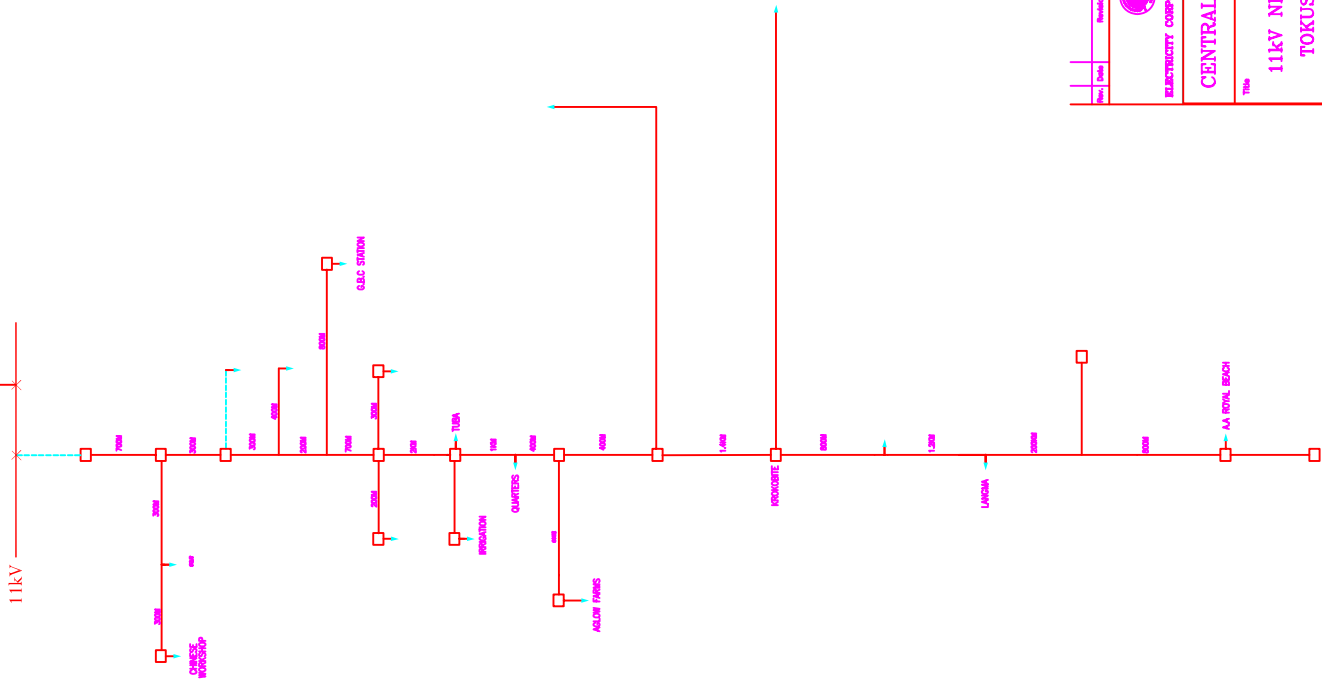


UNIVERSITY COMPANIES OF GHANA	
<b>CENTRAL - REGION</b>	
<b>11kV NETWORK CAPE COAST</b>	
Drawn By: M. A. Agyemang	Checked By: M. A. Agyemang
Drawn Date: 2022	Checked Date: 2022
Drawn No: 1000	Checked No: 1000
Drawn Title: 11kV NETWORK CAPE COAST	Checked Title: 11kV NETWORK CAPE COAST

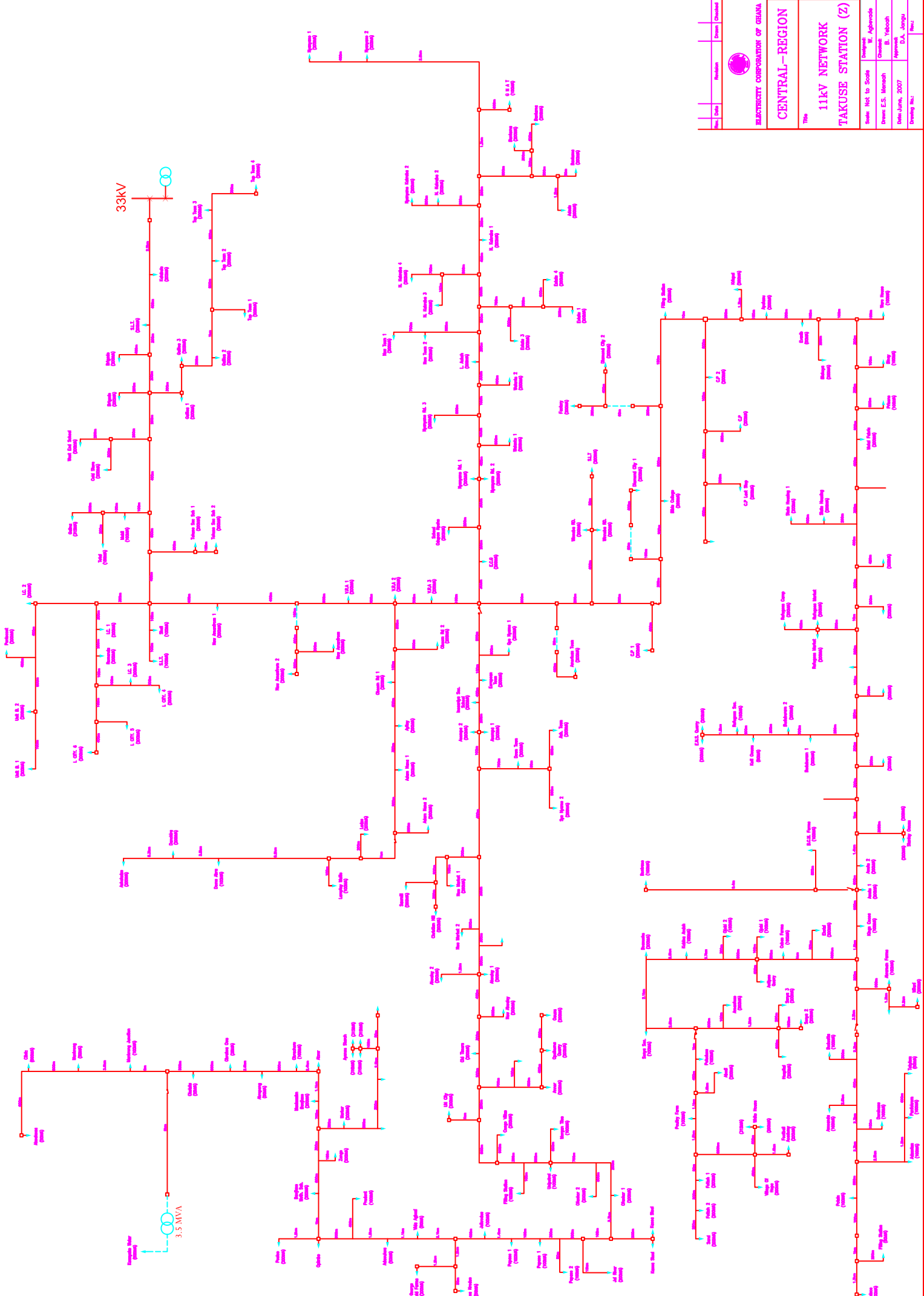




# TOKUSE (Z)

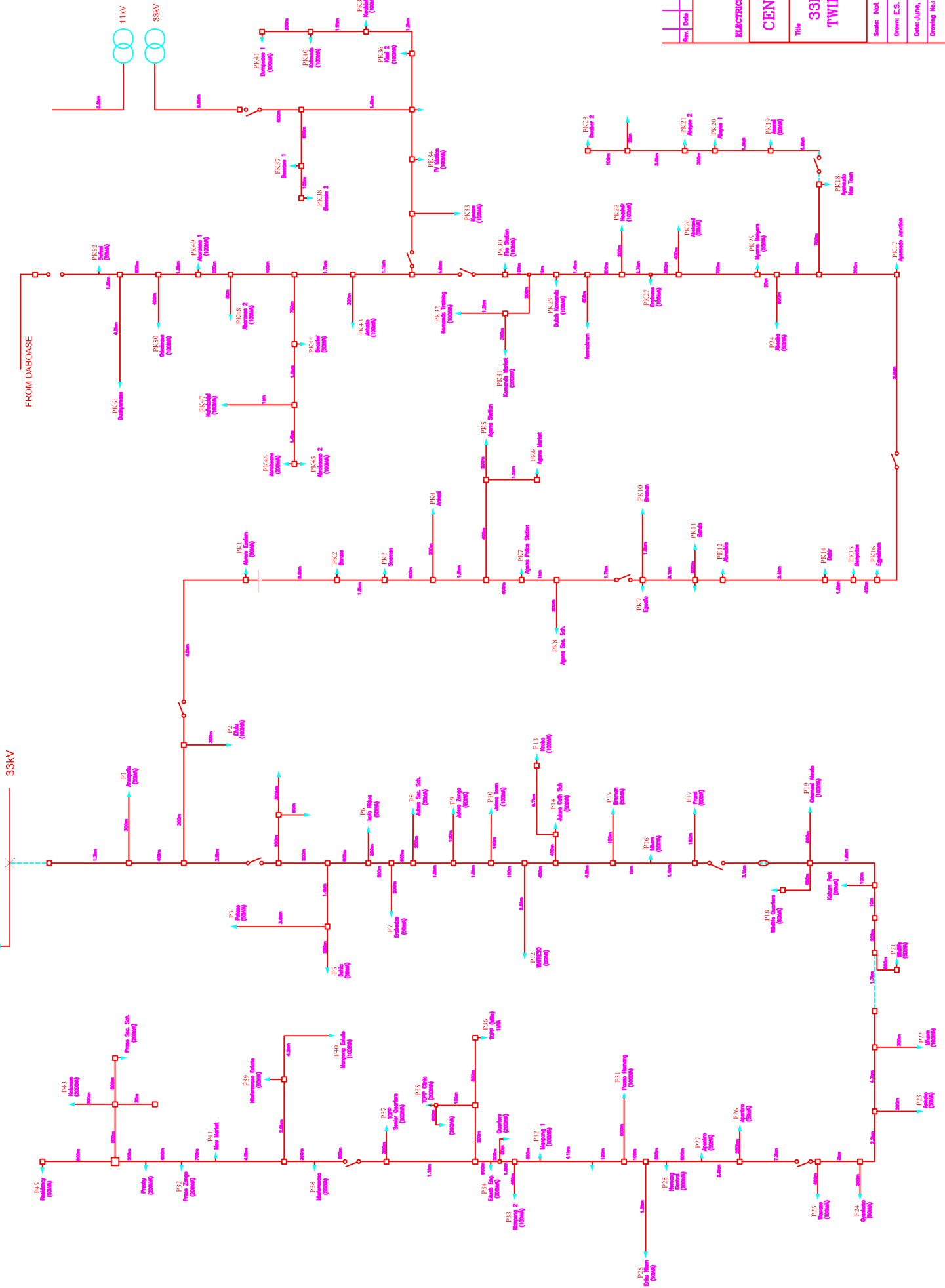


Rev:	Date:	Revised:	Drawn:	Checked:
 <b>ELECTRICITY CORPORATION OF GHANA</b>				
<b>CENTRAL-REGION</b>				
<b>11kV NETWORK TOKUSE (Z)</b>				
Scale: Not to Scale		Designed by: Agbenode		
Drawn: E.S. Memmah		Checked: B. Yabooh		
Date: June, 2007		Approved:		
Drawing No.:		Rev.:		



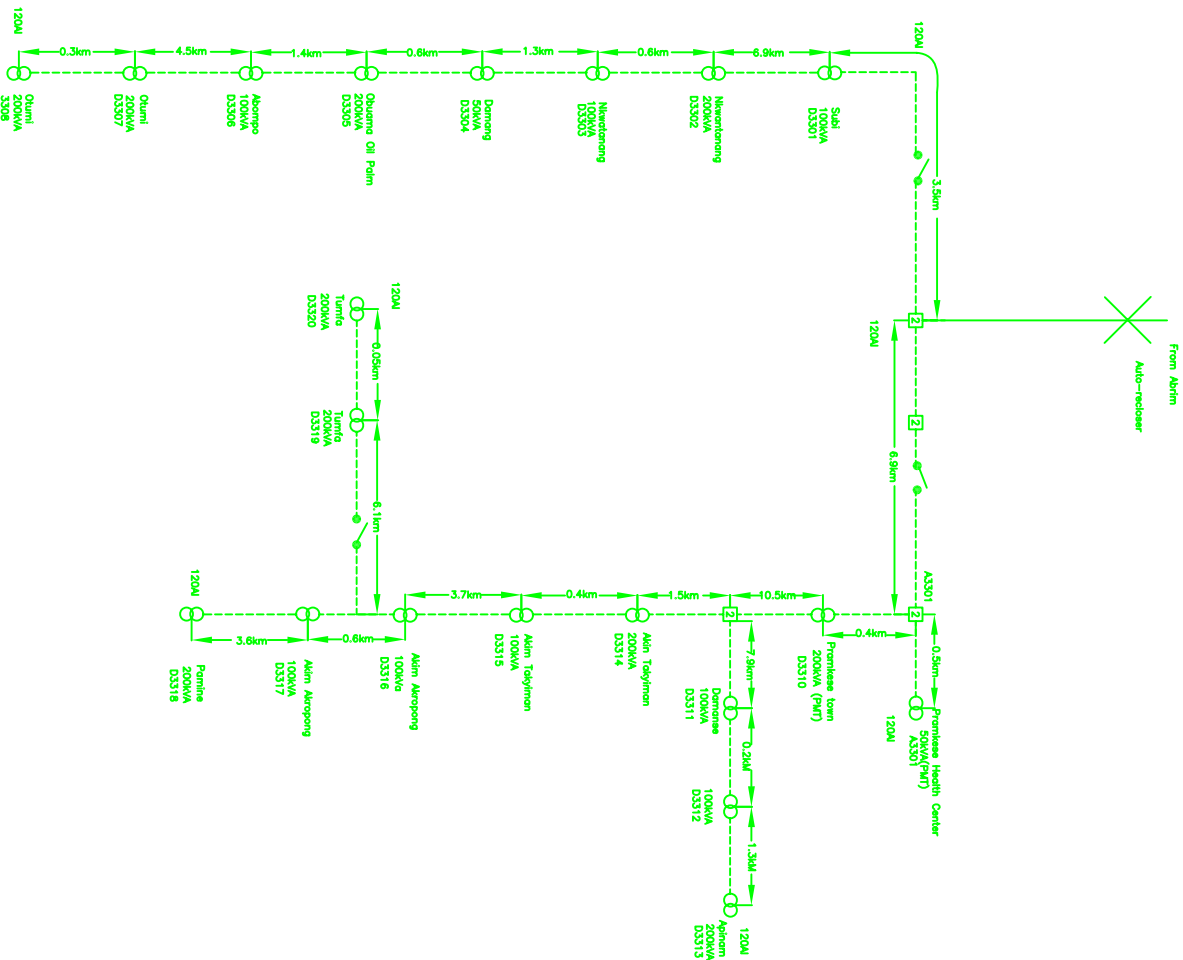
Rev	Date	Revised	By	Checked
 ELECTRICITY CORPORATION OF GHANA <b>CENTRAL—REGION</b>				
<b>11kV NETWORK</b> <b>TAKUSE STATION (Z)</b>				
Scale: Not to Scale Drawn: E.S. Meneah Checked: B. Yaboboh Approved: _____ Date: 14/01/2007 Drawing No.: _____ Rev: _____				


V.R.A. INCOMER  
10/13MVA 161/33



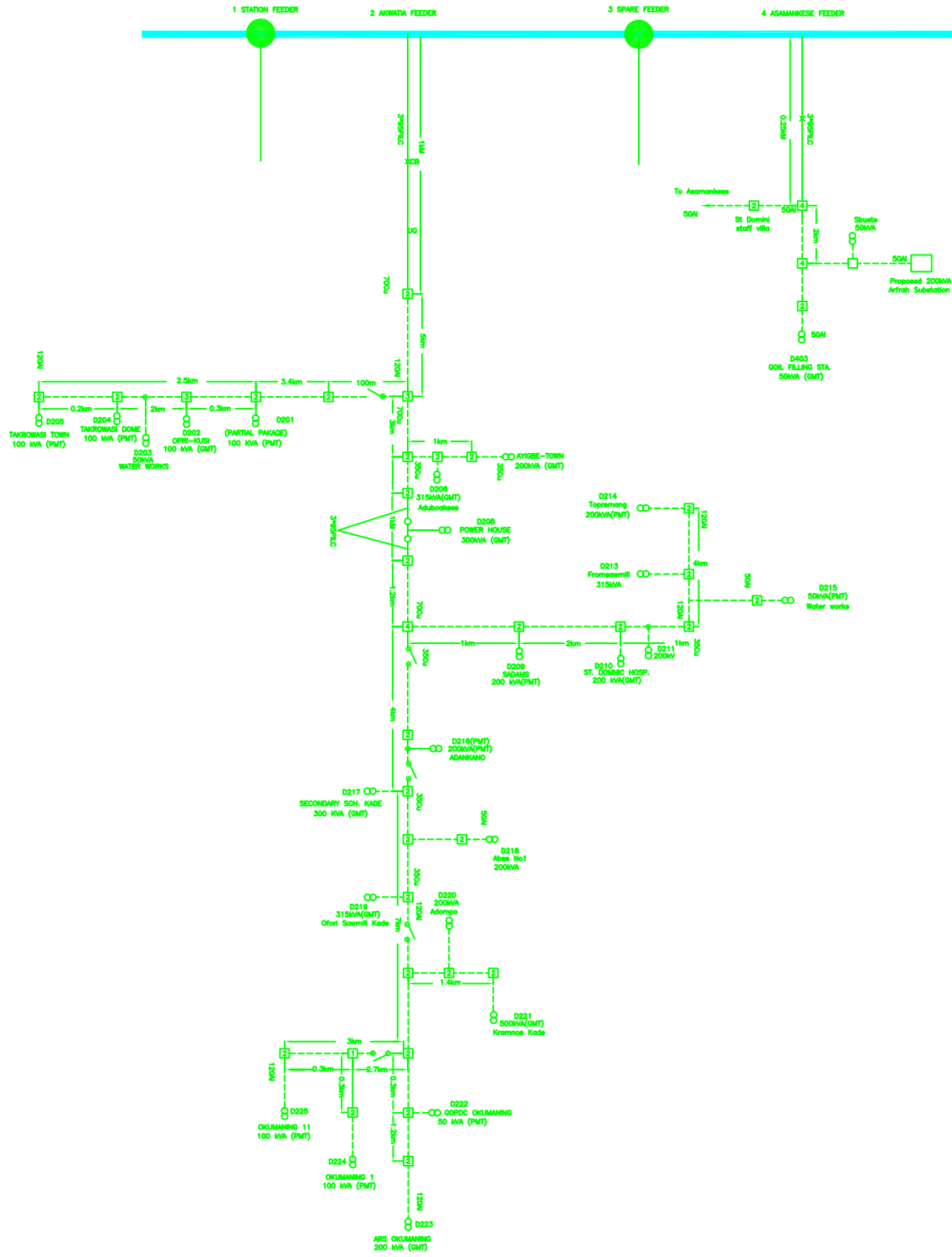
## Single Line Diagram Eastern

**SINGLE LINE DIAGRAM (SCHEMATIC) FOR THE 33KV OHL AT AKWATIA DISTRICT**



Rev.	Date	Revision	Drawn	Checked
 <b>ELECTRICITY COMPANY OF GHANA</b> <b>SINGLE LINE DIAGRAM (SCHEMATIC)</b> <b>EASTERN REGION</b>				
<b>Title</b> <b>AKWATIA DISTRICT 33KV HIGH VOLTAGE ROUTE DESIGN</b>				
<b>Scale</b> 1:1000		<b>Designed &amp; Drawn</b> M. A. ADUO		
<b>Date</b> APRIL, 2017		<b>Approved</b> K. ADUMU (EN)		
<b>Drawing No.</b>				<b>Rev.</b> 0

# SINGLE LINE DIAGRAM (SCHEMATIC) FOR THE 11kV OHL AT AKWATIA DISTRICT

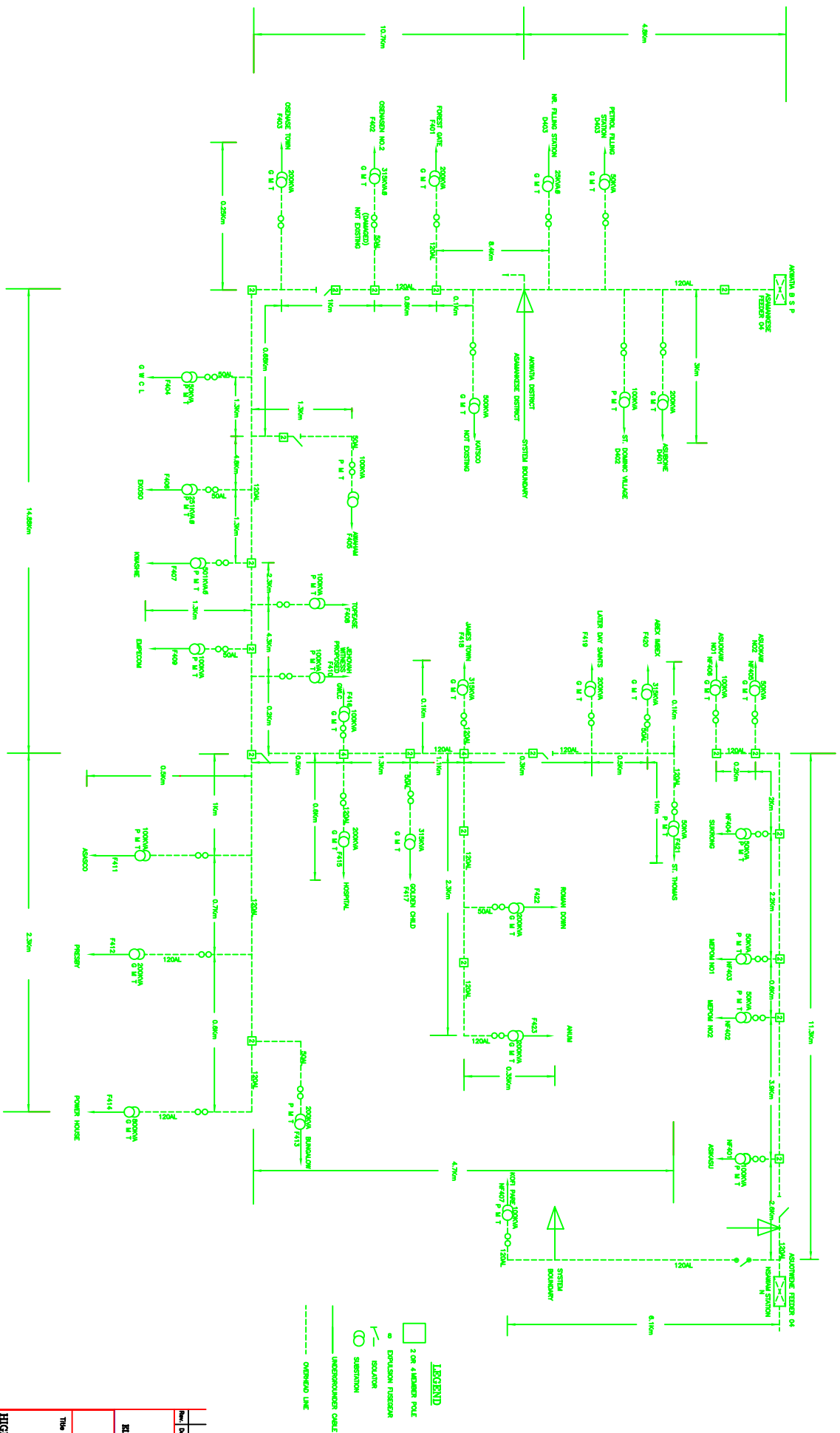


## LEGEND

- 8 SUBSTATION
- 2 11KV POLE
- 3 11KV POLE
- 4 11KV POLE
- U/O CABLE
- O/H LINE
- \* CIRCUIT BREAKER


<b>Rev.</b>		<b>Revision</b>		<b>Drawn</b>	
<b>Date</b>					
<b>RAKREACTIVITY COMPANY OF GHANA</b>					
<b>SINGLE LINE DIAGRAM (SCHEMATIC)</b>					
<b>EASTERN REGION</b>					
<b>Title</b>					
<b>AKWATIA DISTRICT 11KV</b>					
<b>HIGH VOLTAGE ROUTE DESIGN</b>					
<b>Scale</b>		<b>Designed &amp; Drawn</b>		<b>Checked</b>	
<b>Drawn</b>	M. T. AITER	<b>Checked</b>	M. K. DOMAH		
<b>Date</b>	APRIL, 2007	<b>Approved</b>	K. ADOMAH (ENR)		
<b>Drawing No.</b>		<b>Rev.</b>			0

## SINGLE LINE DIAGRAM (SCHEMATIC) FOR THE 11kV OHL AT ASAMANKESE DISTRICT

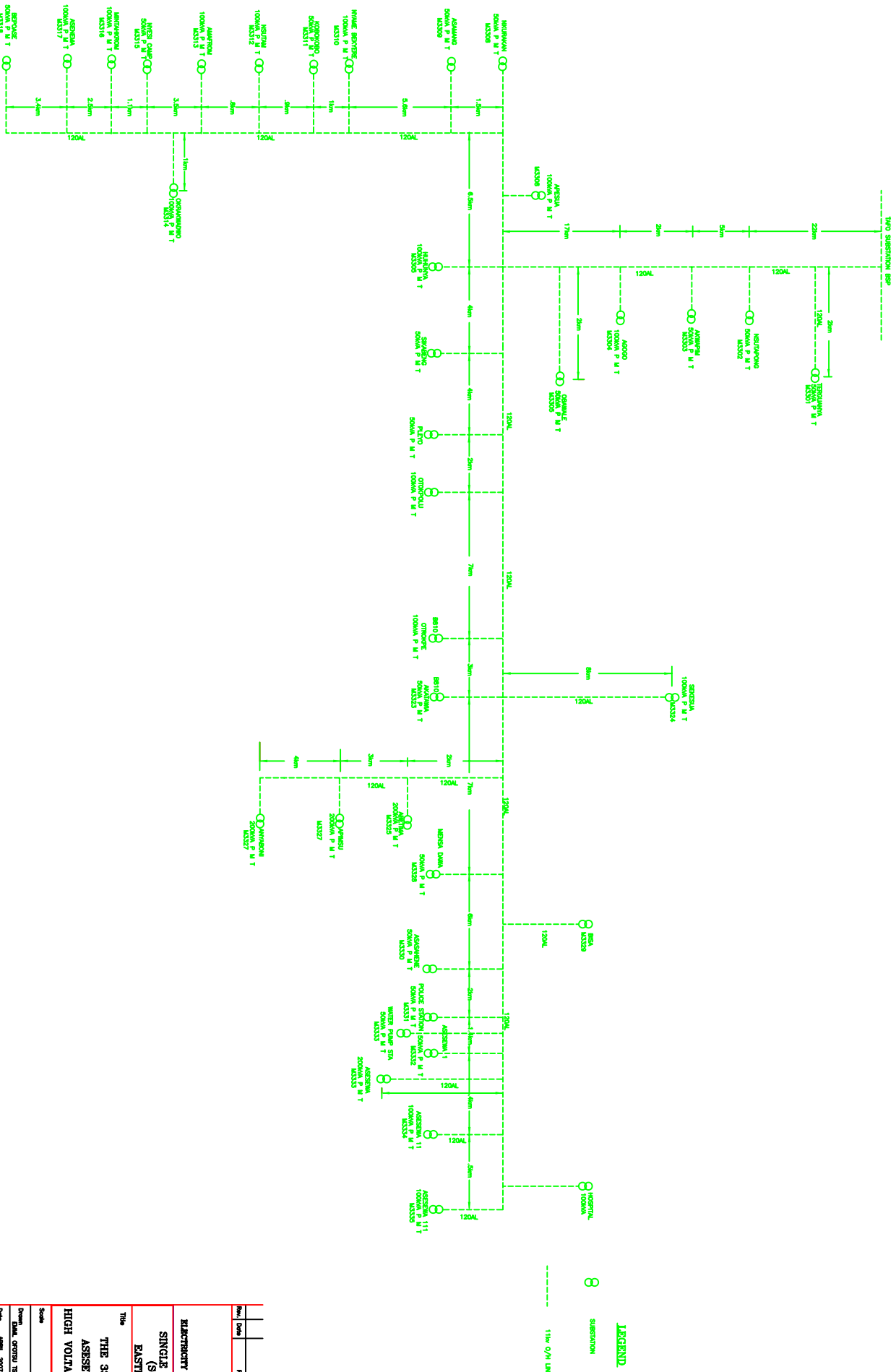


Rev.	Date	Revision	Drawn	Checked
0	APRIL, 2007		E. O. TSEMATA	CHUCKLEI K. ADOMAH (DN)

	
<b>ELECTRICITY COMPANY OF GHANA</b> <b>SINGLE LINE DIAGRAM (SCHEMATIC)</b> <b>ASAMANKESE DISTRICT</b> <b>EASTERN REGION</b>	
Title <b>THE 11KV OHL AT ASAMANKESE DISTRICT HIGH VOLTAGE ROUTE DESIGN</b>	
Scale	Developed & Drawn
Drawn	Checked
Date	Approved
Drawing No.	Rev.
	<b>0</b>

# SINGLE LINE DIAGRAM (SCHEMATIC) FOR THE 33KV OHL AT ASESEWA DISTRICT



**LEGEND**

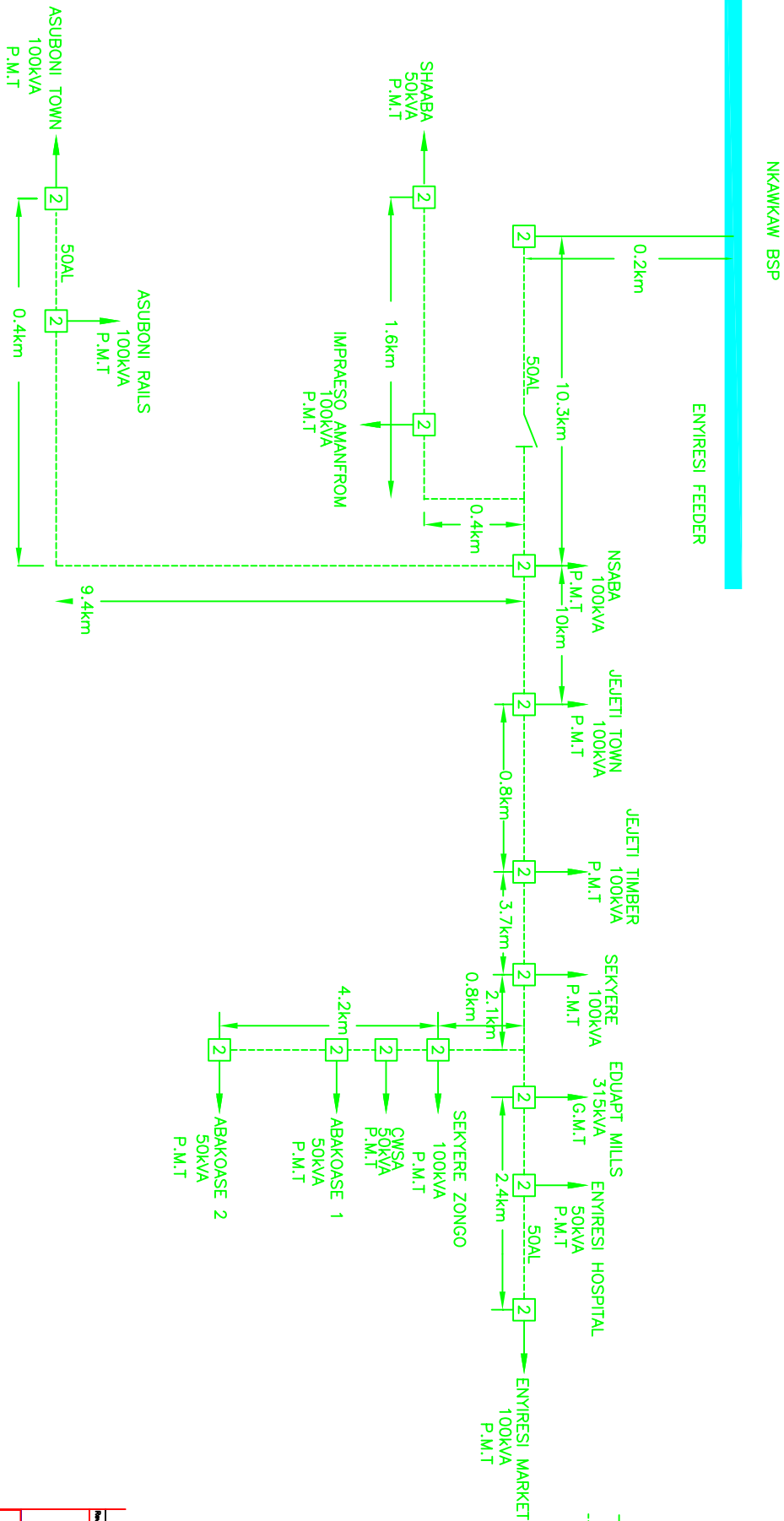
○ SUBSTATION

--- 11KV OHL LINE

<b>Rev.</b>		<b>Issue</b>		<b>Drawn</b>	
<b>ELECTRICITY COMPANY OF GHANA</b> <b>SINGLE LINE DIAGRAM (SCHEMATIC)</b> <b>EASTERN REGION</b>					
<b>Title</b> <b>THE 33KV OHL AT ASESEWA DISTRICT HIGH VOLTAGE ROUTE DESIGN</b>					
<b>Scale</b> Drawn: <b>EMIL OGTUO TESHAN</b> Date: <b>APRIL, 2017</b>			Developed: <b>G. OYIENOMI</b> Checked: <b>M. K. KODJAH</b> Approved: <b>K. JOHANN (EN)</b>		
<b>Drawing No.</b>					<b>Rev. 0</b>

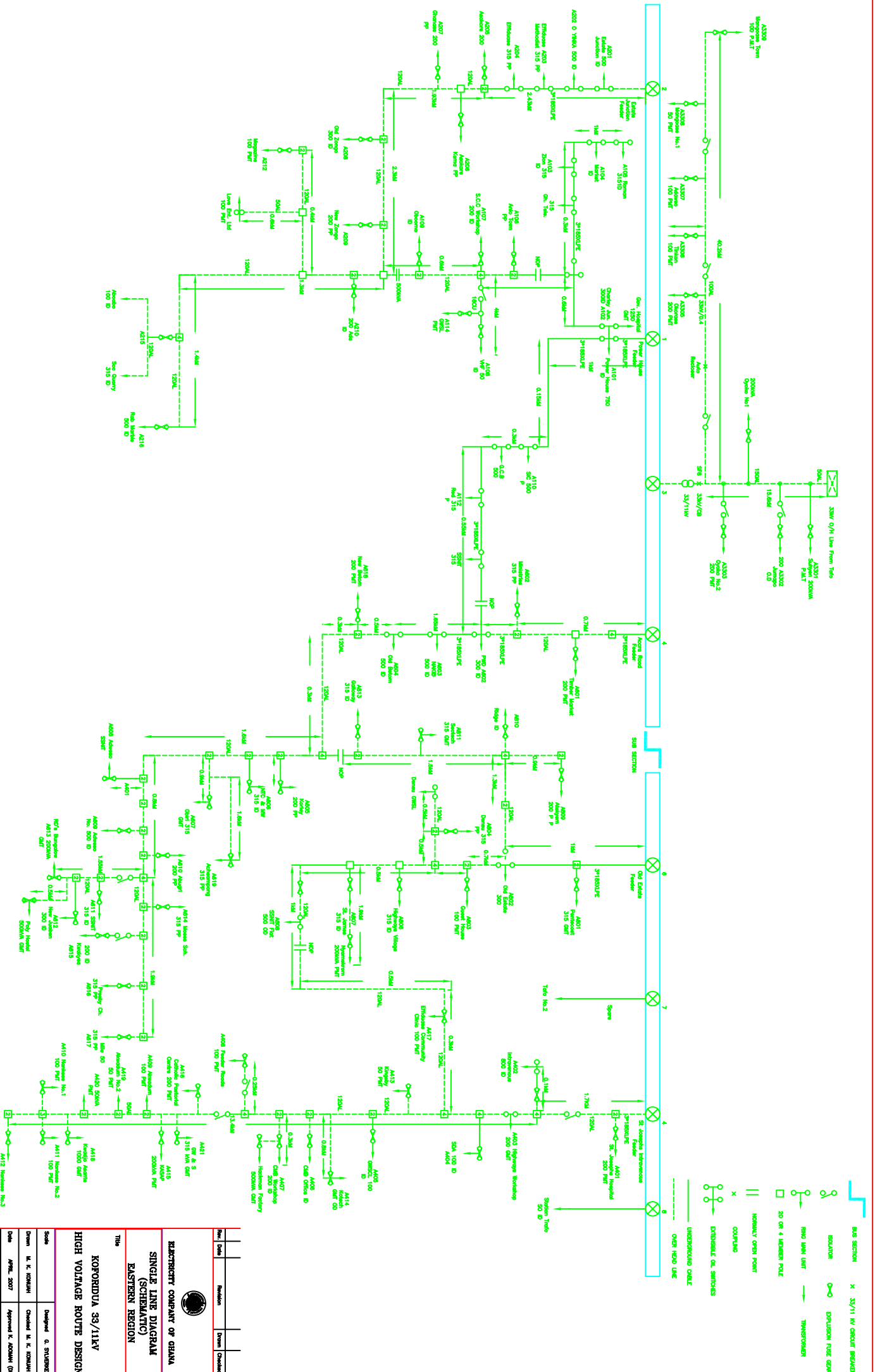


# SINGLE LINE DIAGRAM (SCHEMATIC) FOR THE 33KV OHL AT NKAWKAW DISTRICT



- LEGEND**
- 2 OR 3 MEMBER POLE
  - OO 50KV INSULATOR
  - OO 100KV INSULATOR
  - STATION
  - UNDERGROUND CABLE
  - OVERHEAD LINE

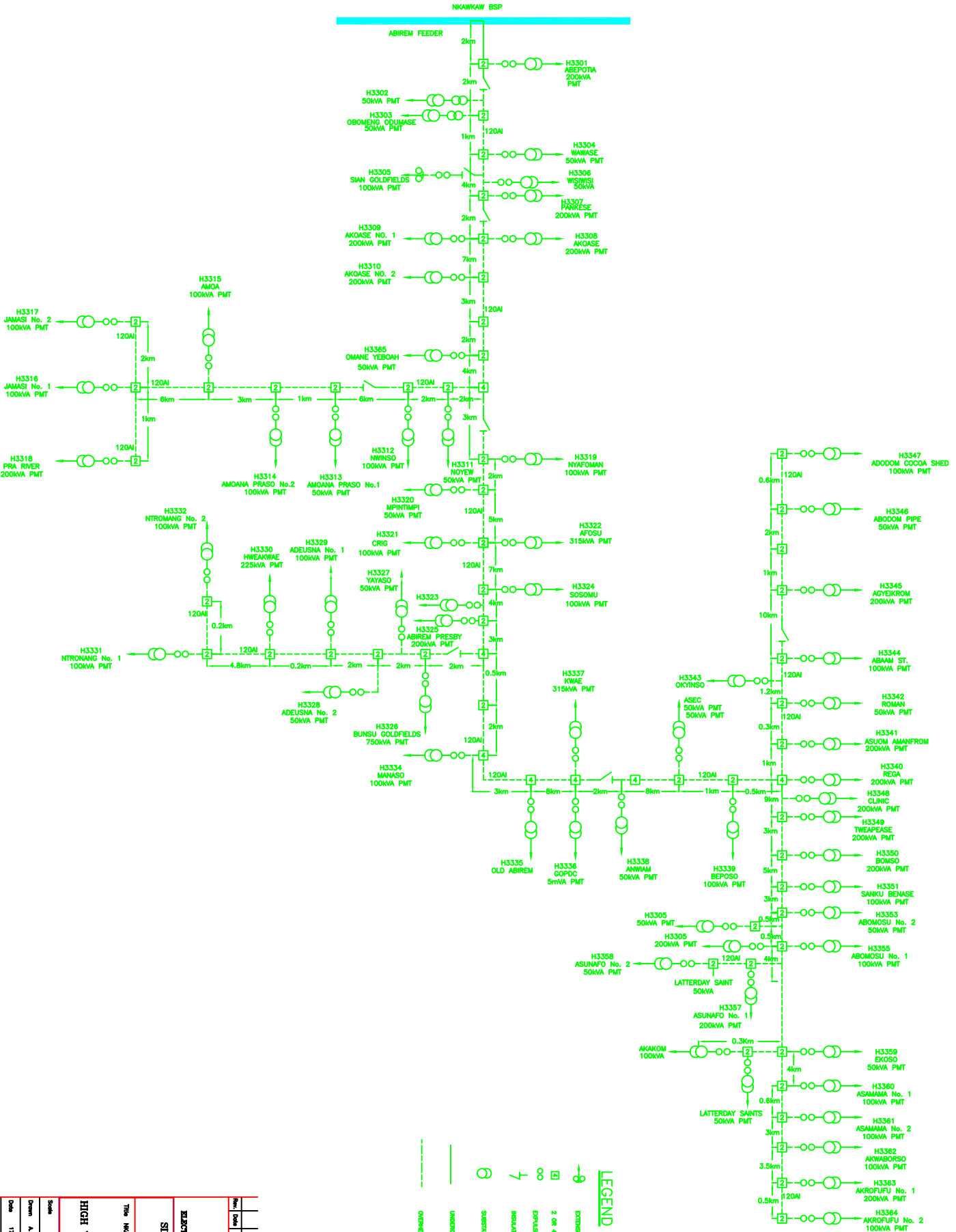
<b>Rev.</b>		<b>Revision</b>		<b>Drawn/Checked</b>	
<b>ELECTRICITY COMPANY OF GHANA</b> <b>SINGLE LINE DIAGRAM (SCHEMATIC)</b> <b>EASTERN REGION</b>					
<b>Title</b> <b>NKAWKAW 33KV</b> <b>HIGH VOLTAGE ROUTE DESIGN</b>					
<b>Scale</b>		<b>Designed</b>	<b>G. STANBORG</b>		
<b>Drawn</b>	<b>M. K. KOSUHI</b>	<b>Checked</b>	<b>M. K. KOSUHI</b>		
<b>Date</b>	<b>APRIL 2007</b>	<b>Approved</b>	<b>K. JOHANN (EN)</b>		
<b>Drawing No.</b>		<b>Rev.</b>	<b>0</b>		



Rev.	Date	Revision	Drawn/Checked
0	APRIL 2007		Approved: K. ADOMAH (DW) Checked: M. K. KODJAH Designed: G. STANBROOK Drawn: M. K. KODJAH

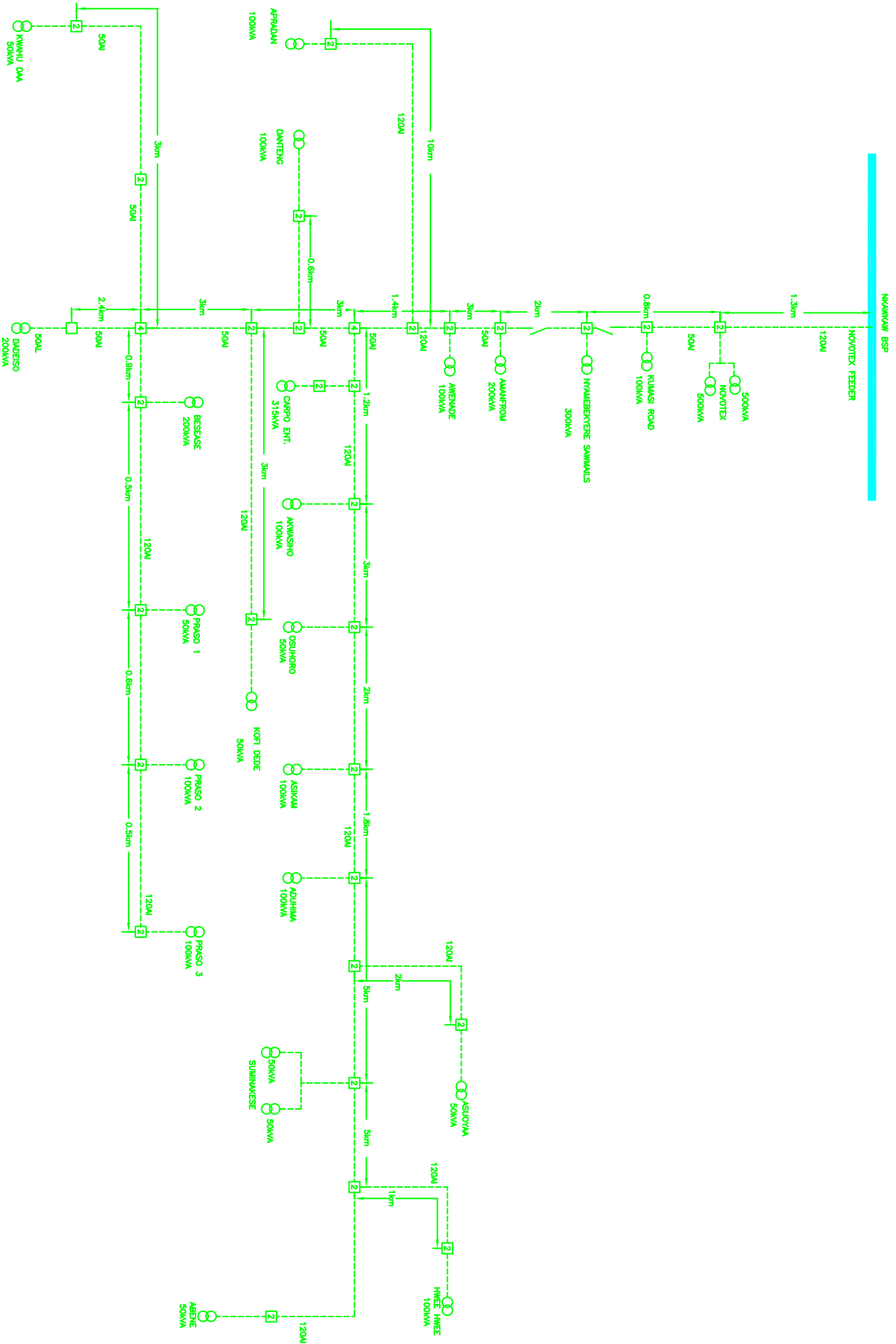
**KORONDUA 33/11KV**  
**HIGH VOLTAGE ROUTE DESIGN**  
**SINGLE LINE DIAGRAM**  
**(SCHEMATIC)**  
**EASTERN REGION**  
**UTILITY COMPANY OF GHANA**


# SINGLE LINE DIAGRAM SCHEMATIC FOR 33KV O/H LINE AT NEW ABIREM DISTRICT (NKAWKAW TO ABIREM)



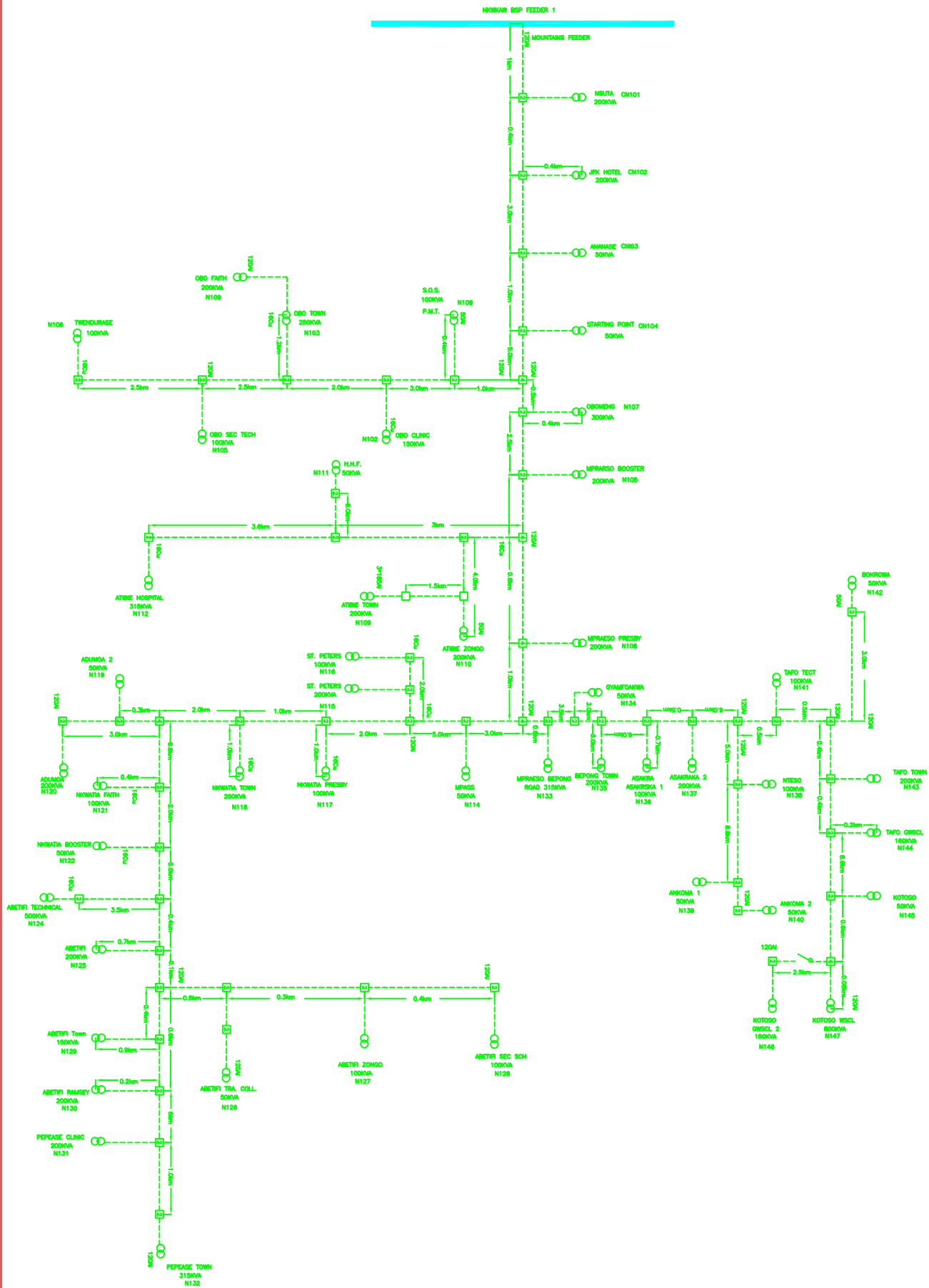
Proj. No.		Revision		Drawn	
Date		Checked		Designed & Drawn	
<b>ELECTRICITY COMPANY OF GHANA</b> <b>SINGLE LINE DIAGRAM (SCHEMATIC)</b> <b>EASTERN REGION</b> This Network is under <b>NKAWKAW 33KV</b> <b>HIGH VOLTAGE ROUTE DESIGN</b>					
Drawn	A. O. YEDDAH	Checked	A. K. KODJAH	Designed & Drawn	
Date	17 April 2007	Approved	K. ADOMAH (M)		
Drawing No.		Rev.	0		

# NKAWKAW TO DADEISO SINGLE LINE DIAGRAM




 <b>ELECTRICITY COMPANY OF GHANA</b> <b>SINGLE LINE DIAGRAM (SCHEMATIC)</b> <b>EASTERN REGION</b>	<b>NKAWKAW 11kV</b> <b>HIGH VOLTAGE ROUTE DESIGN</b>	Title: NKAWKAW TO DADEISO			
Scale:	Developed & Drawn:	Design: O. OYEGBUNMI			
Date:	Approved:	Checked: M. K. KODJIANI			
Drawing No.:	Rev.:	0			

# SINGLE LINE DIAGRAM SCHEMATIC FOR 11KV O/H LINE AT NEW ABIREM DISTRICT (NKAWKAW TO MOUNTAINS)

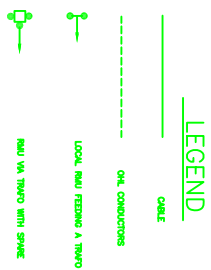
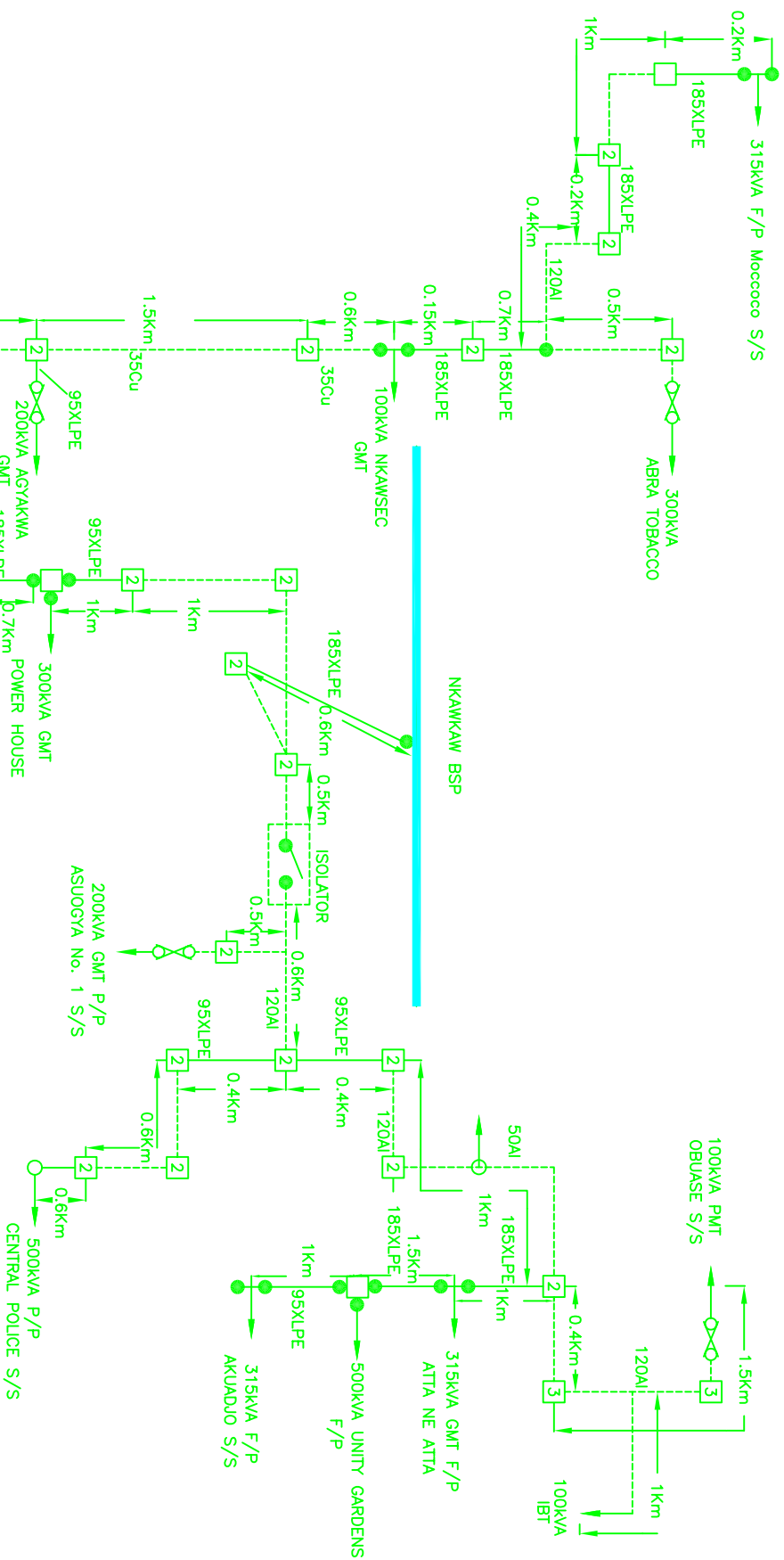


<b>Rev.</b>		<b>Revision</b>		<b>Drawn</b>	
<b>Date</b>	APRIL, 2007	<b>Approved</b>	K. ADUMBA (DN)	<b>Scale</b>	AS SHOWN
<b>Designing No.</b>		<b>Checked</b>	M. K. ADUMBA	<b>Drawn</b>	A. O. YERUHI
<b>Rev.</b>	0	<b>Checked</b>		<b>Drawn</b>	

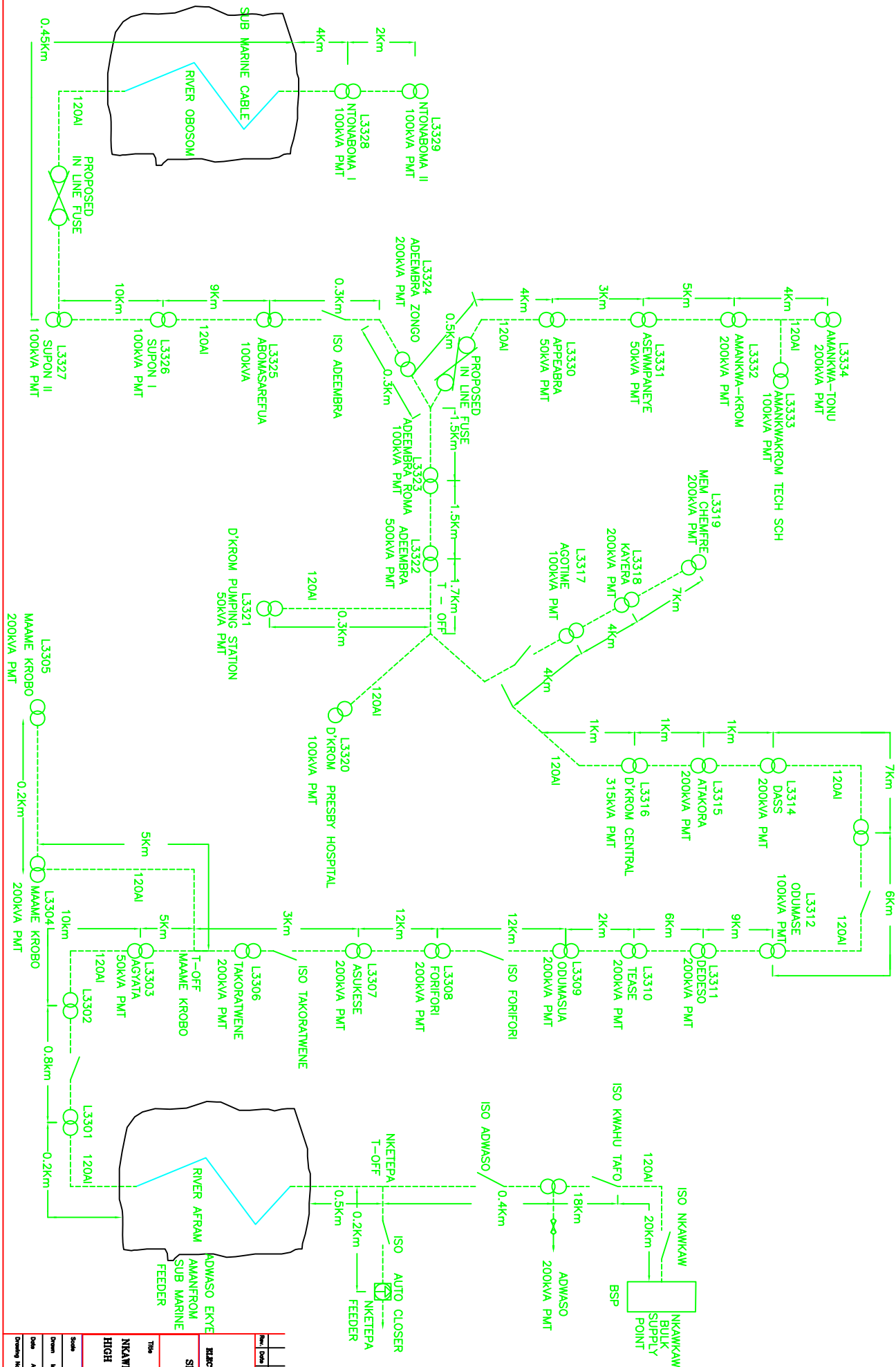
<b>PROJECT INFORMATION</b>	<b>DESIGNER'S INFORMATION</b>
<b>Title</b>	<b>Name</b>
<b>ELECTRICITY COMPANY OF GHANA</b> <b>SINGLE LINE DIAGRAM</b> <b>(SCHEMATIC)</b> <b>NEW ABIREM DISTRICT 11KV</b> <b>EASTERN REGION</b>	 <b>DESIGNED BY</b> <b>MOUNTAINS TO NEW ABIREM</b> <b>MPRAESO DISTRICT 11KV</b> <b>HIGH VOLTAGE ROUTE DESIGN</b>

# SINGLE LINE DIAGRAM (SCHEMATIC) FOR 11KV O/H LINE AT (NKAWKAW TOWN FEEDER) DISTRICT



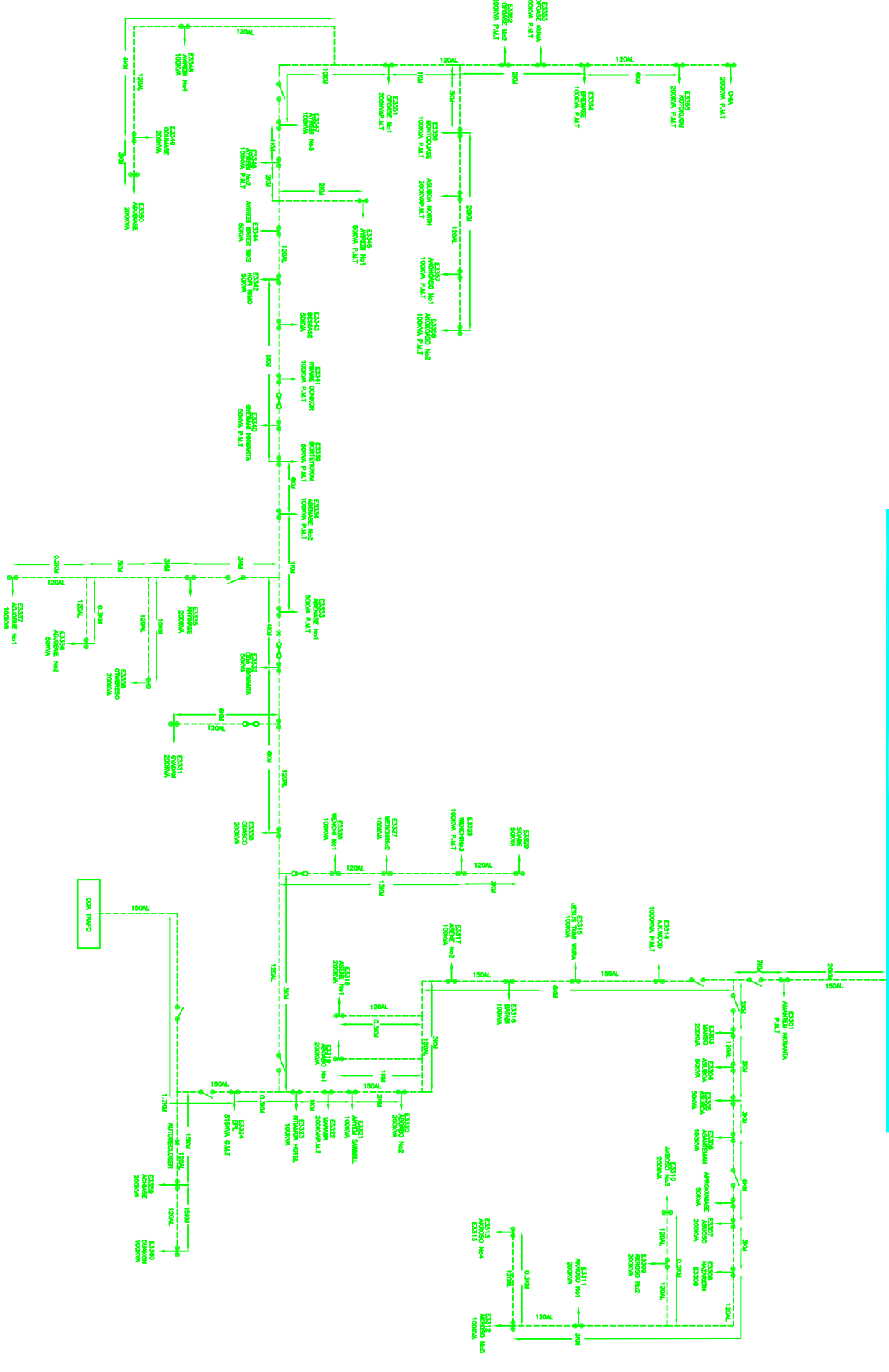
<b>Rev.</b>		<b>Revision</b>		<b>Drawn</b>	
<b>Date</b>					
<b>ELECTRICITY COMPANY OF GHANA</b> <b>SINGLE LINE DIAGRAM (SCHEMATIC)</b> <b>EASTERN REGION</b>					
<b>Title</b>					
<b>NKAWKAW FEEDER 11KV</b> <b>HIGH VOLTAGE ROUTE DESIGN</b>					
<b>Scale</b>		<b>Designed &amp; Drawn</b>			
Drawn: ADJUSTINE YEDJAH		Checked: M. K. KUMAH			
Date: 10 FEB. 2007		Approved: K. ADOMAH (DG)			
Drawing No.		Rev.		0	

**SINGLE LINE DIAGRAM (SCHEMATIC) FOR THE 33kV OHL AT DONKORRROM DISTRICT  
NKAWKAW-DONKORRROM**



		<b>ELECTRICITY COMPANY OF GHANA</b> <b>SINGLE LINE DIAGRAM (SCHEMATIC)</b> <b>EAŠTERN REGION</b>
<b>33kV NKAWKAW-DONKORRROM HIGH VOLTAGE ROUTE DESIGN</b>		
<b>Title</b> NKAWKAW-DONKORRROM 33kV HIGH VOLTAGE ROUTE DESIGN	<b>Scale</b> 1:1000	<b>Drawn &amp; Checked</b> M. K. DONKORRROM / G. DONKORRROM
<b>Date</b> APRIL 2017	<b>Approved</b> K. DONKORRROM (DG)	<b>Rev.</b> 0

# SINGLE LINE DIAGRAM SCHEMATIC FOR 33KV O/H LINE AT ODA DISTRICT



### LEGEND

- TRANSFORMER
- 2 OR 4 MEMBER POLE
- SOLAR
- POLE MOUNTED THWAO
- G.L.T
- GROUND MOUNTED THWAO
- EXPUSION FUSE GEAR
- UNDERGROUND CABLE
- OVER HEAD LINE
- X AUTO RECLOSER

Rev.	Date	Revision	Drawn	Checked

**ELECTRICITY COMPANY OF GHANA**

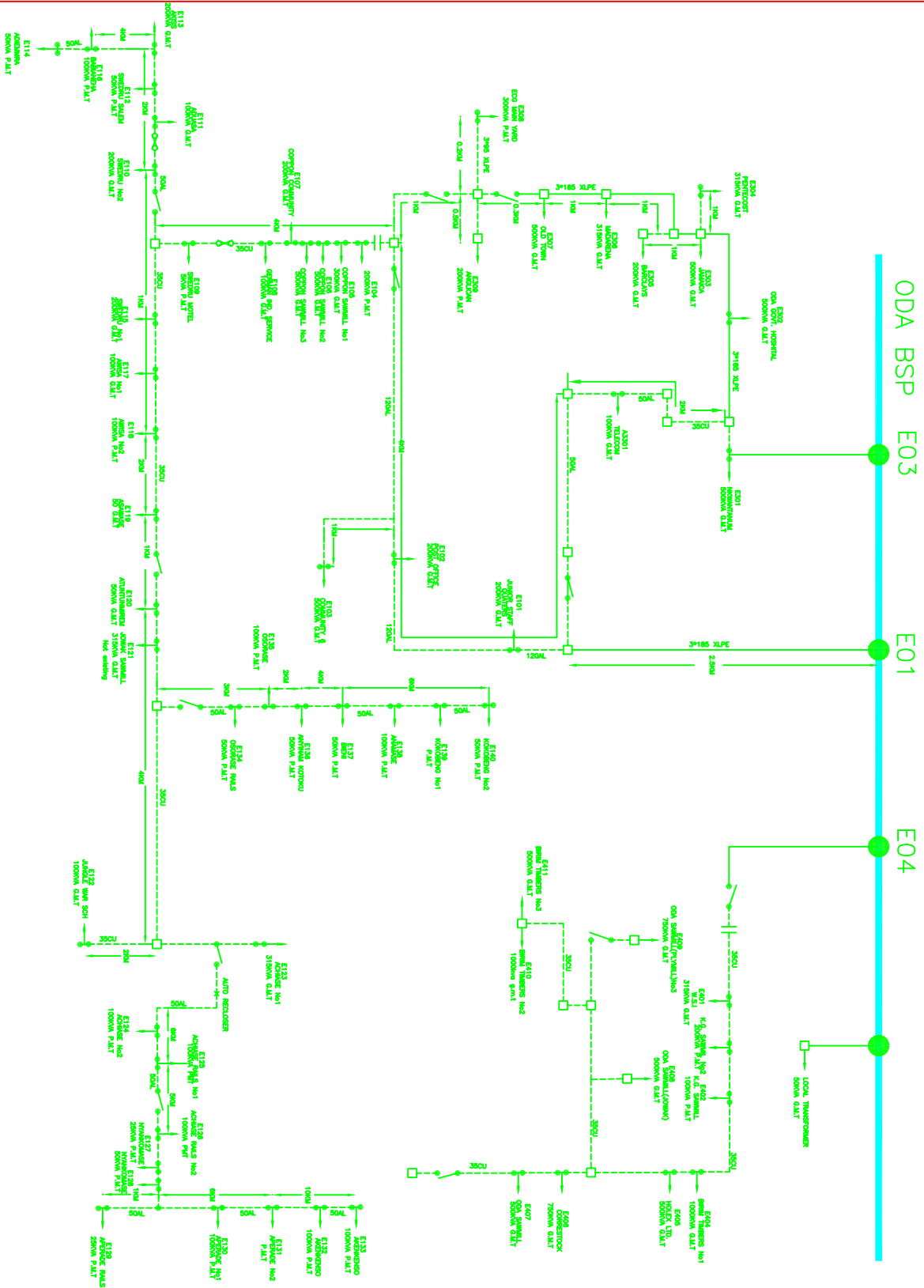
**SINGLE LINE DIAGRAM (SCHEMATIC) EASTERN REGION**

**ODA DISTRICT 33KV HIGH VOLTAGE ROUTE DESIGN**

Scale	Designed & Drawn	Checked
Drawn: CHARLES K. OBO	Designed & Drawn: CHARLES K. OBO	Checked: L. K. KUMAH
Date: APRIL, 2007	Approved: K. ADUMAH (DW)	Rev: 0



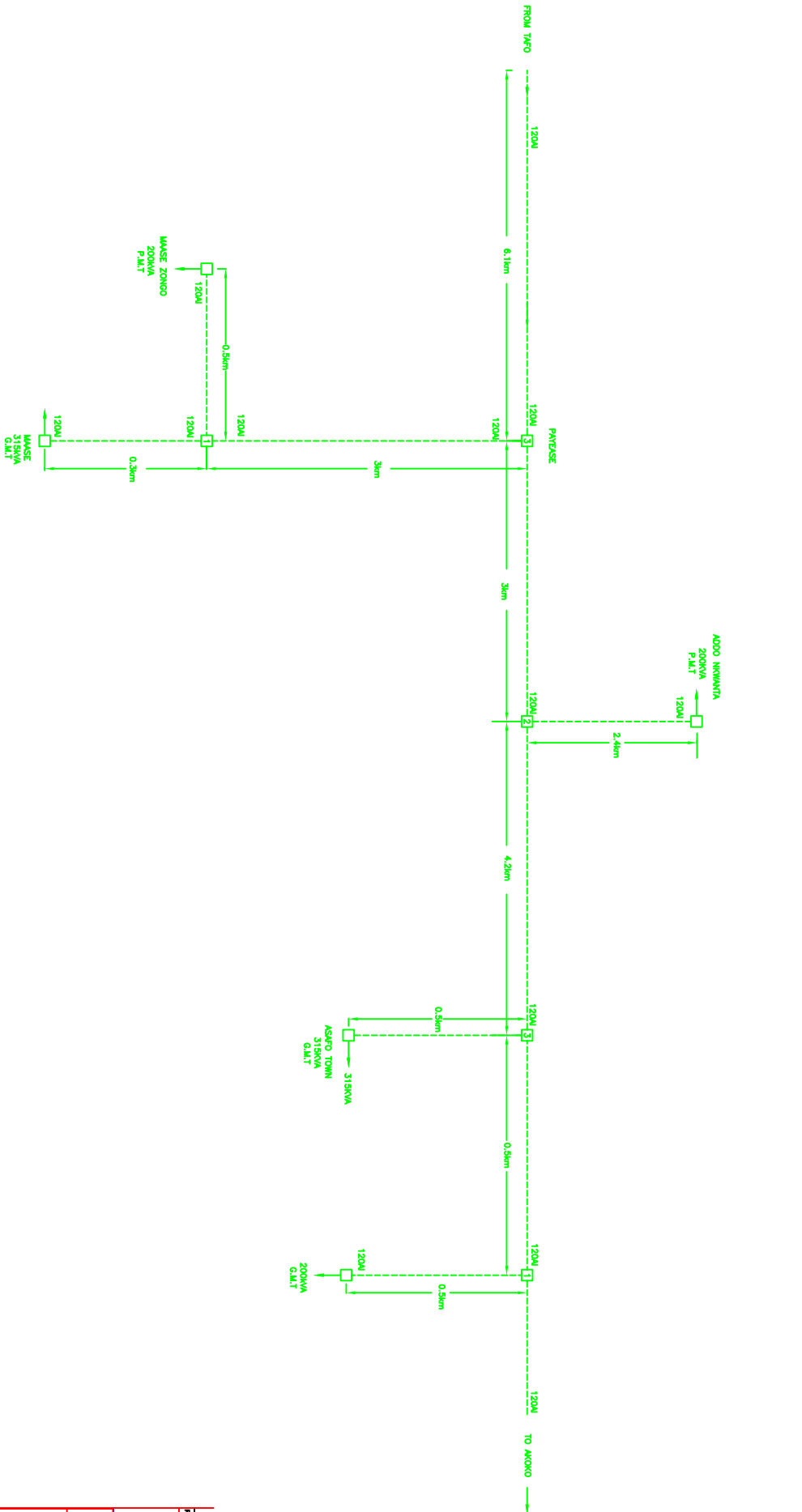
# SINGLE LINE DIAGRAM SCHEMATIC FOR 11KV O/H LINE AT ODA DISTRICT



- LEGEND**
- TRANSFORMER
  - 2 OR 4 BREAKER POLE
  - SOLAR
  - ! POLE MOUNTED THRO
  - P.M.T. GROUND MOUNTED THRO
  - 0 M.T. EXPLOSION RISE GEAR
  - UNDERGROUND CABLE
  - OVER HEAD LINE
  - NORMALLY OPEN POINT
  - AUTO RECLOSER
  - X

<b>Rev.</b>		<b>Revision</b>		<b>Drawn</b>	
<b>Drawn</b>		<b>Checked</b>		<b>Approved</b>	
<b>ELECTRICITY COMPANY OF GHANA</b> <b>SINGLE LINE DIAGRAM (SCHEMATIC)</b> <b>EASTERN REGION</b>					
Title <b>ODA 11KV</b> <b>HIGH VOLTAGE ROUTE DESIGN</b>					
<b>Scale</b>		<b>Designed &amp; Drawn</b>		<b>Date</b>	
<b>Drawn</b>	C.K. OBO	<b>Checked</b>	L. K. KUMAH	<b>Date</b>	11 APRIL 2007
<b>Drawn</b>		<b>Approved</b>	K. JOHNSON (DN)	<b>Drawing No.</b>	
				<b>Rev.</b>	<b>0</b>

# SINGLE LINE DIAGRAM SCHEMATIC FOR 11KV O/H LINE AT TAFO DISTRICT

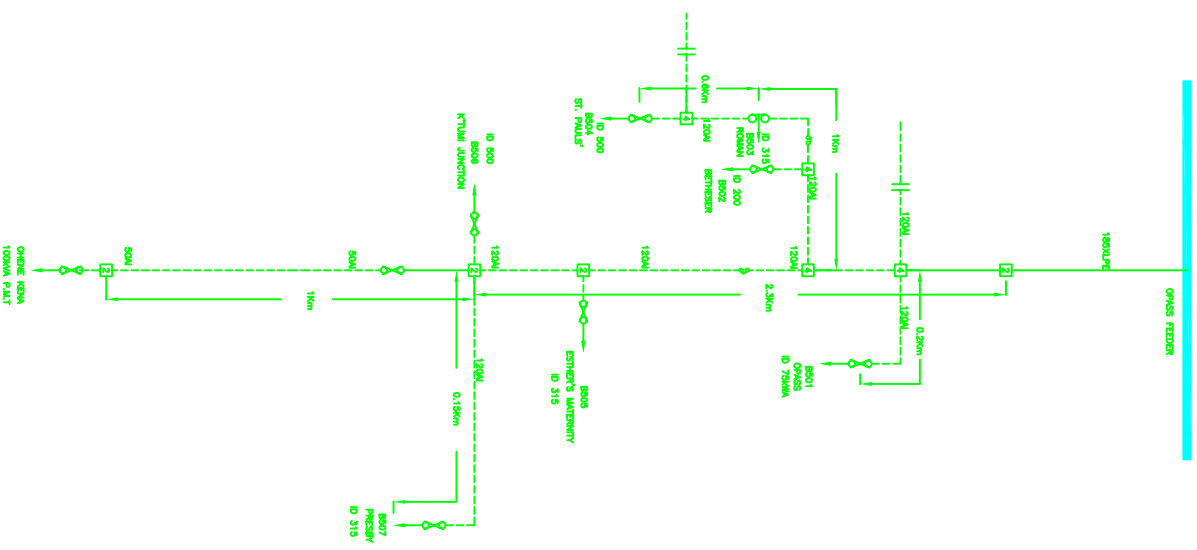


**LEGEND**

- 2 OR 4 MEMBER POLE
- TRANSFORMER
- - - OVER HEAD LINE

<b>Rev.</b>		<b>Revision</b>		<b>Drawn</b>	
<b>Date</b>				<b>Checked</b>	
<b>ELECTRICITY COMPANY OF GHANA</b> <b>SINGLE LINE DIAGRAM (SCHEMATIC)</b> <b>EASTERN REGION</b>					
<b>Title</b> <b>TAFO 11KV</b> <b>HIGH VOLTAGE ROUTE DESIGN</b>					
<b>Scale</b>		<b>Designed</b>	<b>G. STANBORG</b>		
<b>Drawn</b>	<b>A. B. MUMU</b>	<b>Checked</b>	<b>M. K. KOSUMU</b>		
<b>Date</b>	<b>APRIL 2007</b>	<b>Approved</b>	<b>K. ADOMU (ENR)</b>		
<b>Drawing No.</b>		<b>Rev.</b>		<b>0</b>	

# SINGLE LINE DIAGRAM SCHEMATIC FOR 11KV O/H LINE AT TAFO DISTRICT OPASS FEEDER



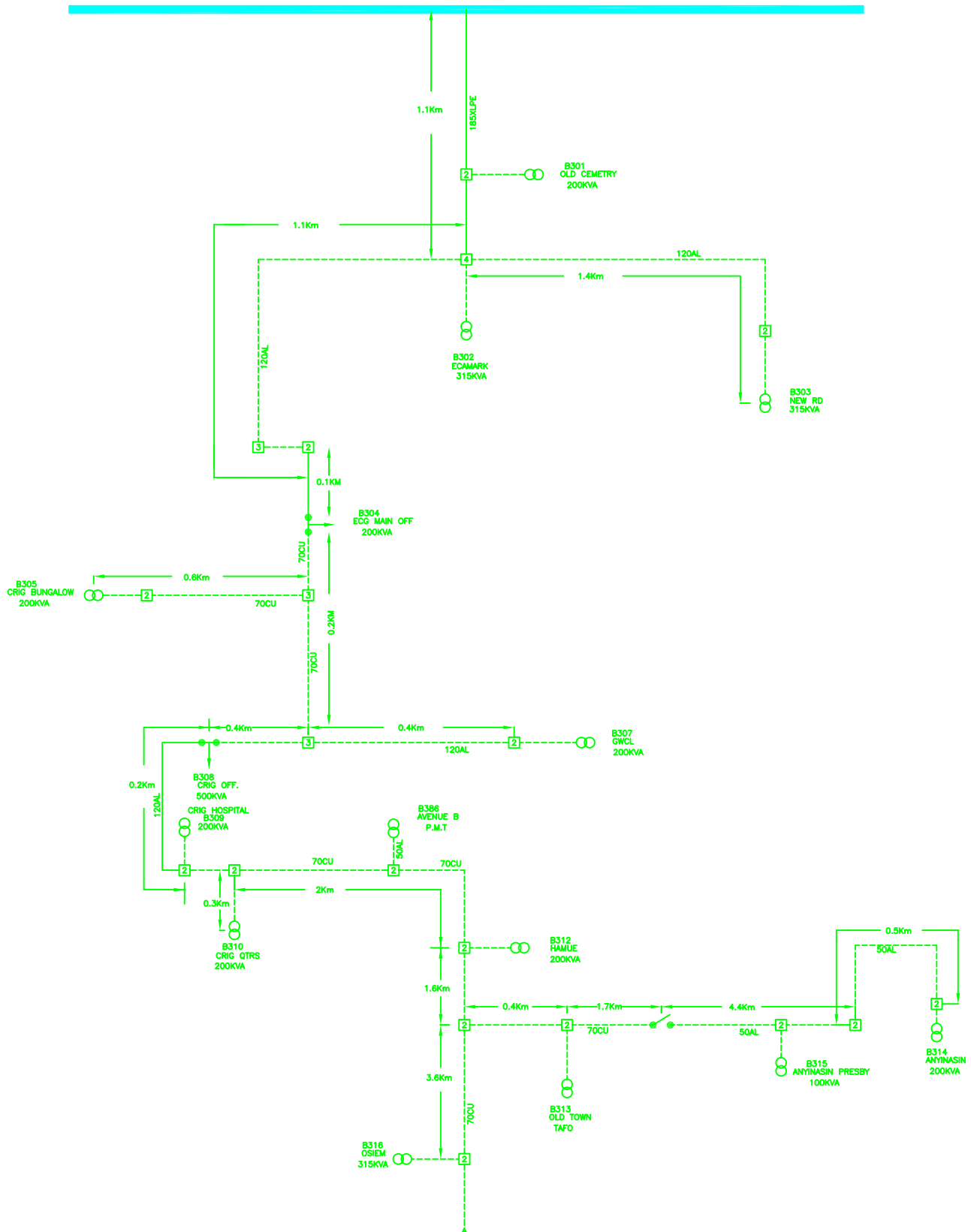
### LEGEND

- RING MAIN UNIT
- INDOOR TAP
- POLE MOUNTED TAP
- 2 OR 4 MEMBER POLE
- ISOLATOR
- EPULSION FUSE CORE
- NORMALLY OPEN POINT
- TRANSFORMER
- UNDERGROUND CABLE
- OVERHEAD LINE

<b>Rev.</b>		<b>Revision</b>		<b>Drawn</b>	
<b>Date</b>					
<b>ELECTRICITY COMPANY OF GHANA</b>					
<b>SINGLE LINE DIAGRAM (SCHEMATIC)</b>					
<b>EASTERN REGION</b>					
<b>Title</b>					
<b>OPASS FEEDER 11KV</b>					
<b>HIGH VOLTAGE ROUTE DESIGN</b>					
<b>Scale</b>		<b>Designed</b>	<b>D. GEMANTY</b>	<b>Checked</b>	<b>H. BONGBO</b>
<b>Drawn</b>	<b>M. K. KODJAH</b>	<b>Checked</b>	<b>H. BONGBO</b>	<b>Approved</b>	<b>K. JOHNSON (M)</b>
<b>Date</b>	<b>10 FEB. 2007</b>				
<b>Drawing No.</b>		<b>Rev.</b>	<b>0</b>		

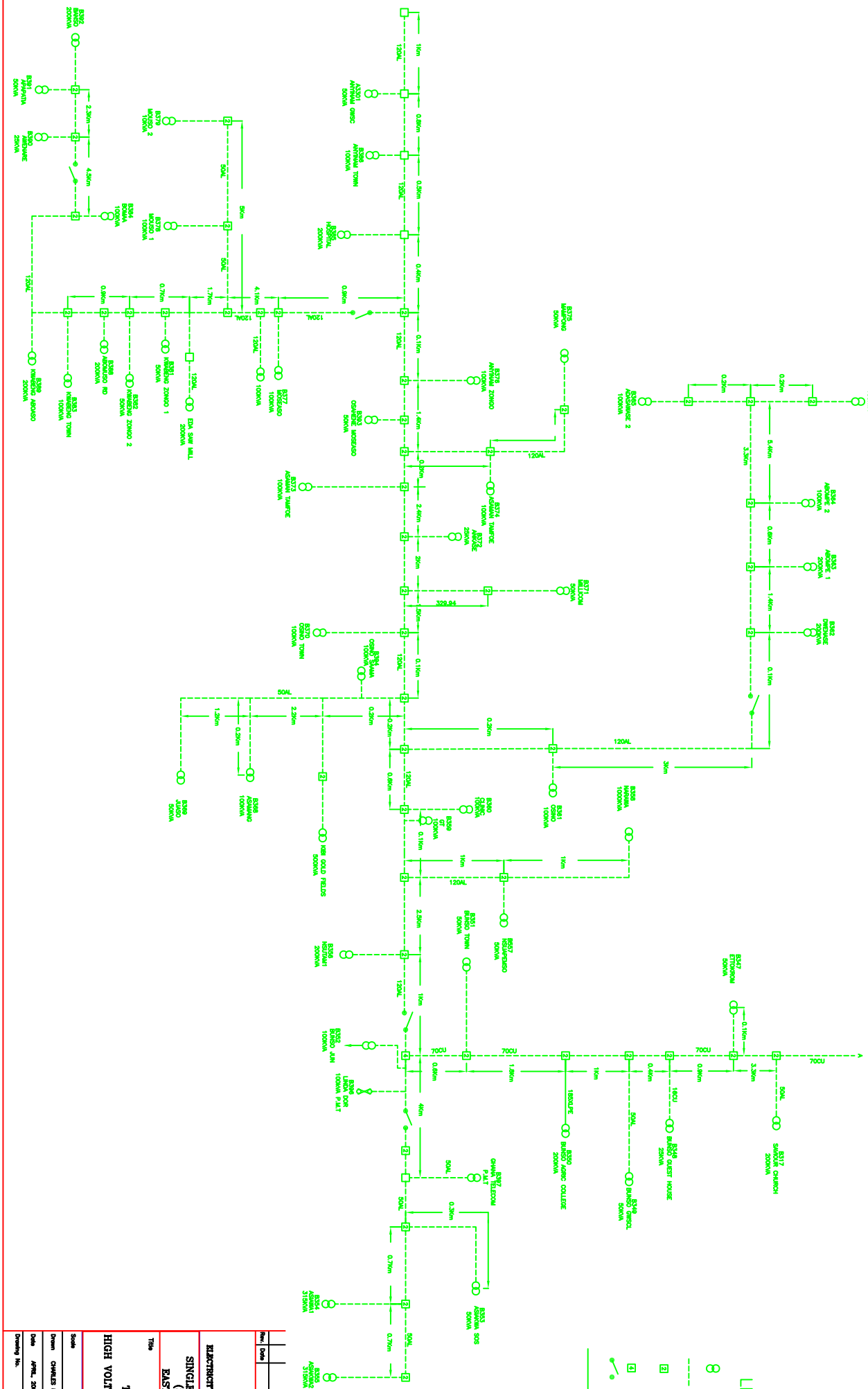
# SINGLE LINE DIAGRAM (SCHEMATIC) FOR 11KV O/H LINE AT (TAFO-ANYANAM FEEDER) DISTRICT

## TAFO BSP



<b>Rev.</b>		<b>Revision</b>		<b>Drawn</b>	
<b>Date</b>					
<b>RAJASTHANI COMPANY OF CHINA</b>					
<b>SINGLE LINE DIAGRAM (SCHEMATIC)</b>					
<b>EASTERN REGION</b>					
<b>TAFO-ANYANAM 11KV</b>					
<b>HIGH VOLTAGE ROUTE DESIGN</b>					
<b>Scale</b>		<b>Designed &amp; Drawn</b>		<b>Checked</b>	
<b>Drawn</b>	CHARLES K. OBI	<b>Checked</b>	M. K. OBI		
<b>Date</b>	13 APRIL 2007	<b>Approved</b>	K. JOSEPH (M)		
<b>Drawing No.</b>		<b>Rev.</b>			0

# SINGLE LINE DIAGRAM (SCHEMATIC) FOR 11KV O/H LINE AT (TAFU) DISTRICT

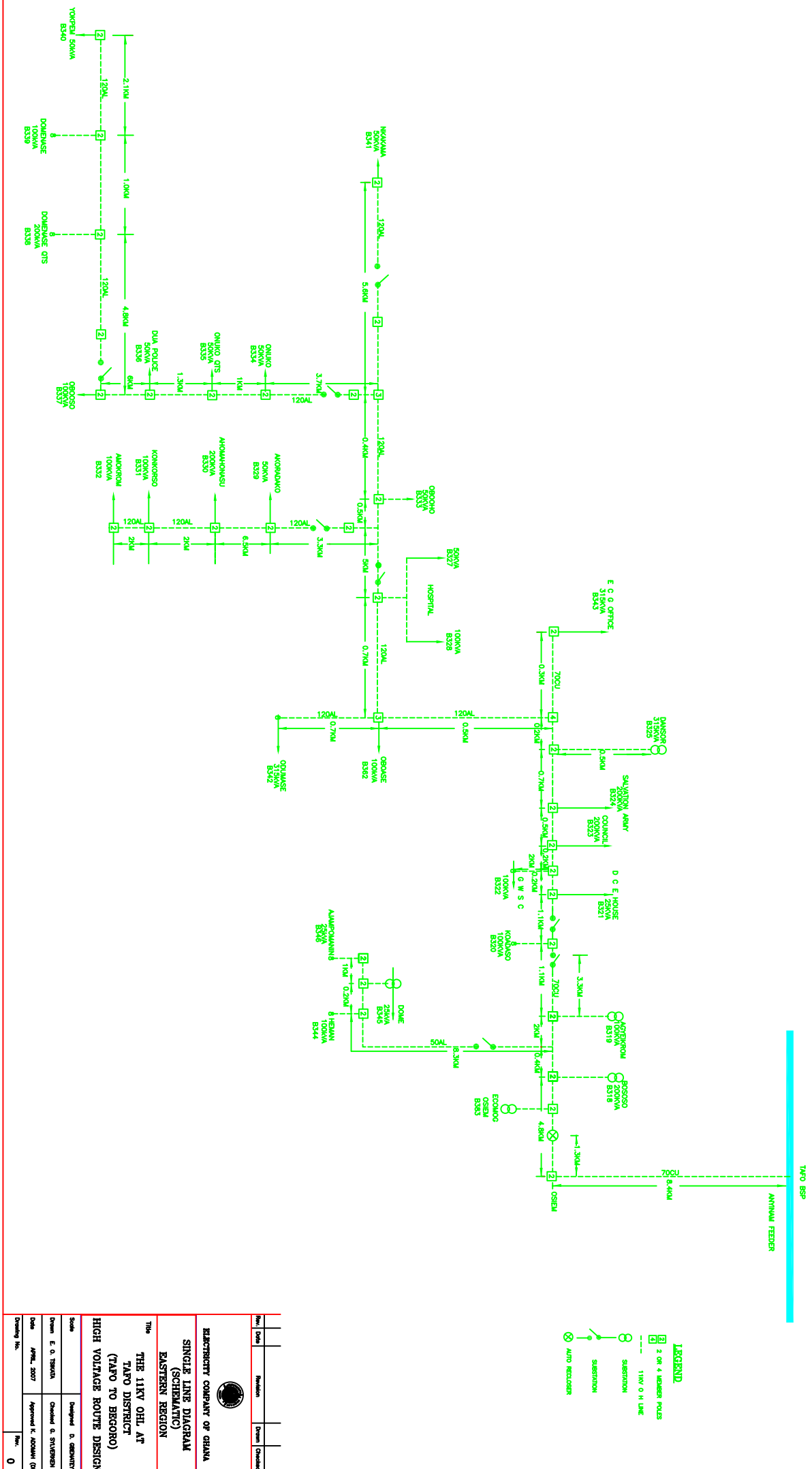


## LEGEND

- 8 STATION
- 11KV O/H LINE
- 2 MEMBER POLE
- 4 MEMBER POLE
- SOLAR
- CABLE

<b>Rev.</b>	<b>Date</b>	<b>Revision</b>	<b>Drawn</b>	<b>Checked</b>
<b>ELECTRICITY COMPANY OF GHANA</b> <b>SINGLE LINE DIAGRAM (SCHEMATIC)</b> <b>EASTERN REGION</b>				
<b>Title</b> TAFU 11KV HIGH VOLTAGE ROUTE DESIGN				
<b>Scale</b>	<b>Designed &amp; Drawn</b> CHARLES K. OBO			
<b>Drawn</b>	<b>Checked</b> L. K. KUMAH			
<b>Date</b>	<b>Approved</b> K. JOHNSON (M)			
<b>Drawing No.</b>	<b>Rev.</b> 0			

SINGLE LINE DIAGRAM (SCHEMATIC) FOR THE 11KV OHL TAFO DISTRICT  
(TAFO TO BEGORO)



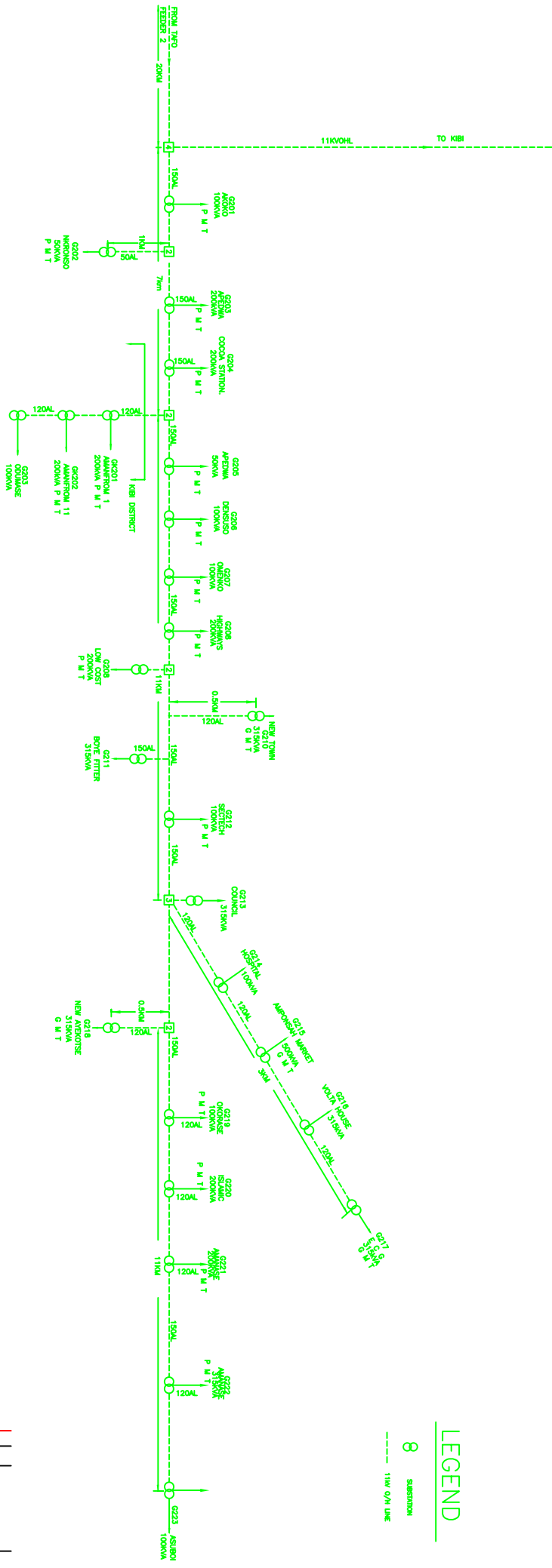
**LEGEND**

- 3 OR 4 MEMBER POLES
- 11KV O H LINE
- SUBSTATION
- AUTO RECLOSER

No.	Date	Revision	Drawn	Checked
<b>ELECTRICITY COMPANY OF GHANA</b> <b>SINGLE LINE DIAGRAM (SCHEMATIC)</b> <b>EASTERN REGION</b>				
<p style="text-align: center;">Title</p> <p style="text-align: center;"><b>THE 11KV OHL AT TAFO DISTRICT (TAFO TO BEGORO) HIGH VOLTAGE ROUTE DESIGN</b></p>				
Scale	Drawn	Designed		
	E. O. TERWA	D. GERANTYI		
Date	APRIL, 2007	Checked & SUPERVISOR		
Drawing No.		Approved & MANAGER (EM)		
			Rev.	0



# SINGLE LINE DIAGRAM (SCHEMATIC) FOR THE 11KV OHL AT SUHUM DISTRICT TAFU TO SUHUM




## LEGEND

- 8 SUBSTATION
- 11KV O/H LINE

No.	Date	Revision	Drawn	Checked

 <b>ELECTRICITY COMPANY OF GHANA</b> <b>SINGLE LINE DIAGRAM (SCHEMATIC)</b> <b>EASTERN REGION</b>			
<b>THE 11KV OHL AT SUHUM (TAFU TO SUHUM)</b> <b>TAFU 11KV</b> <b>HIGH VOLTAGE ROUTE DESIGN</b>			
Drawn	E. O. TRIMATA	Checked	M. K. KODJAH
Date	APRIL, 2007	Approved	K. ADOMAH (EN)
Drawing No.		Rev.	0

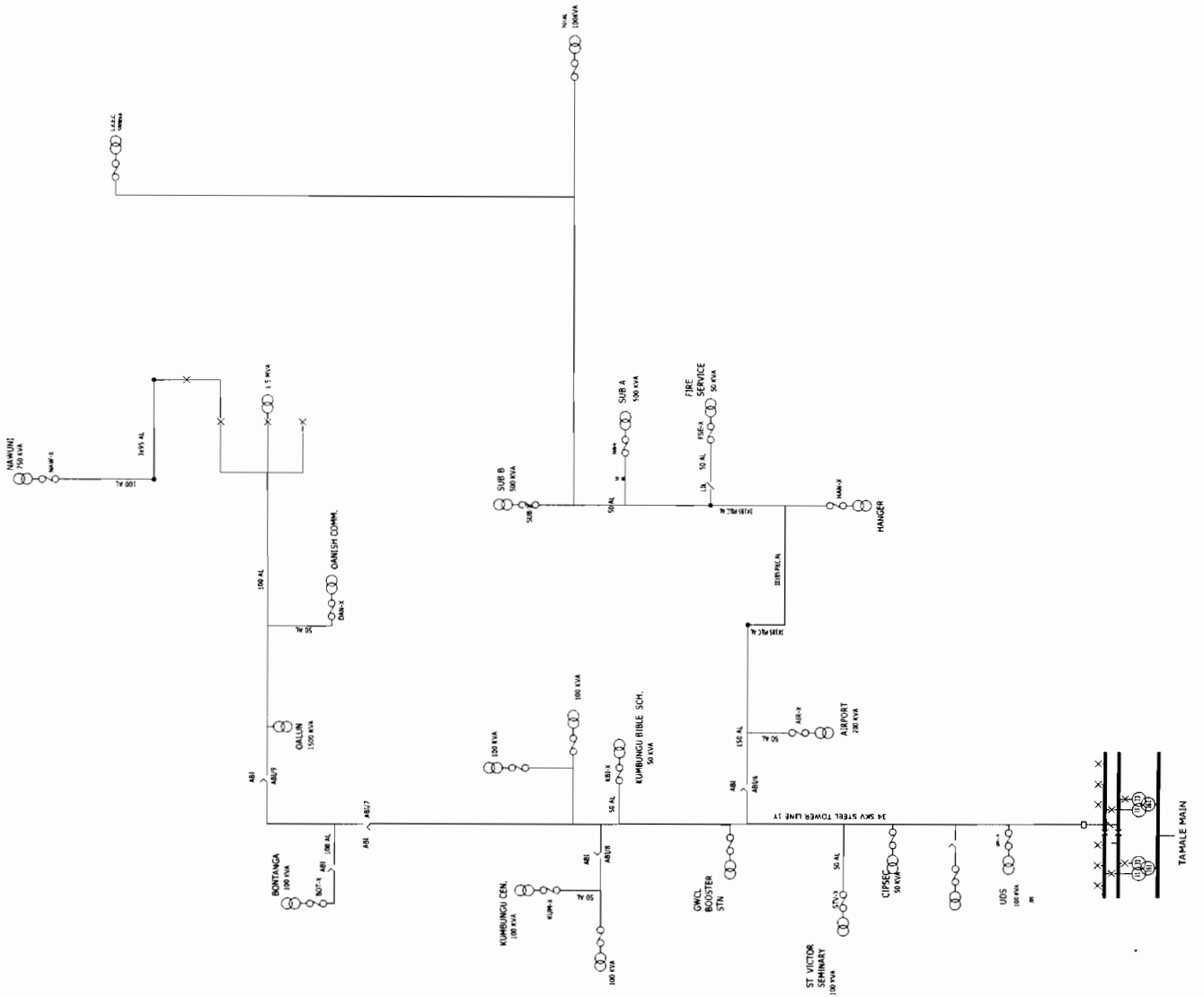


Single Line Diagram

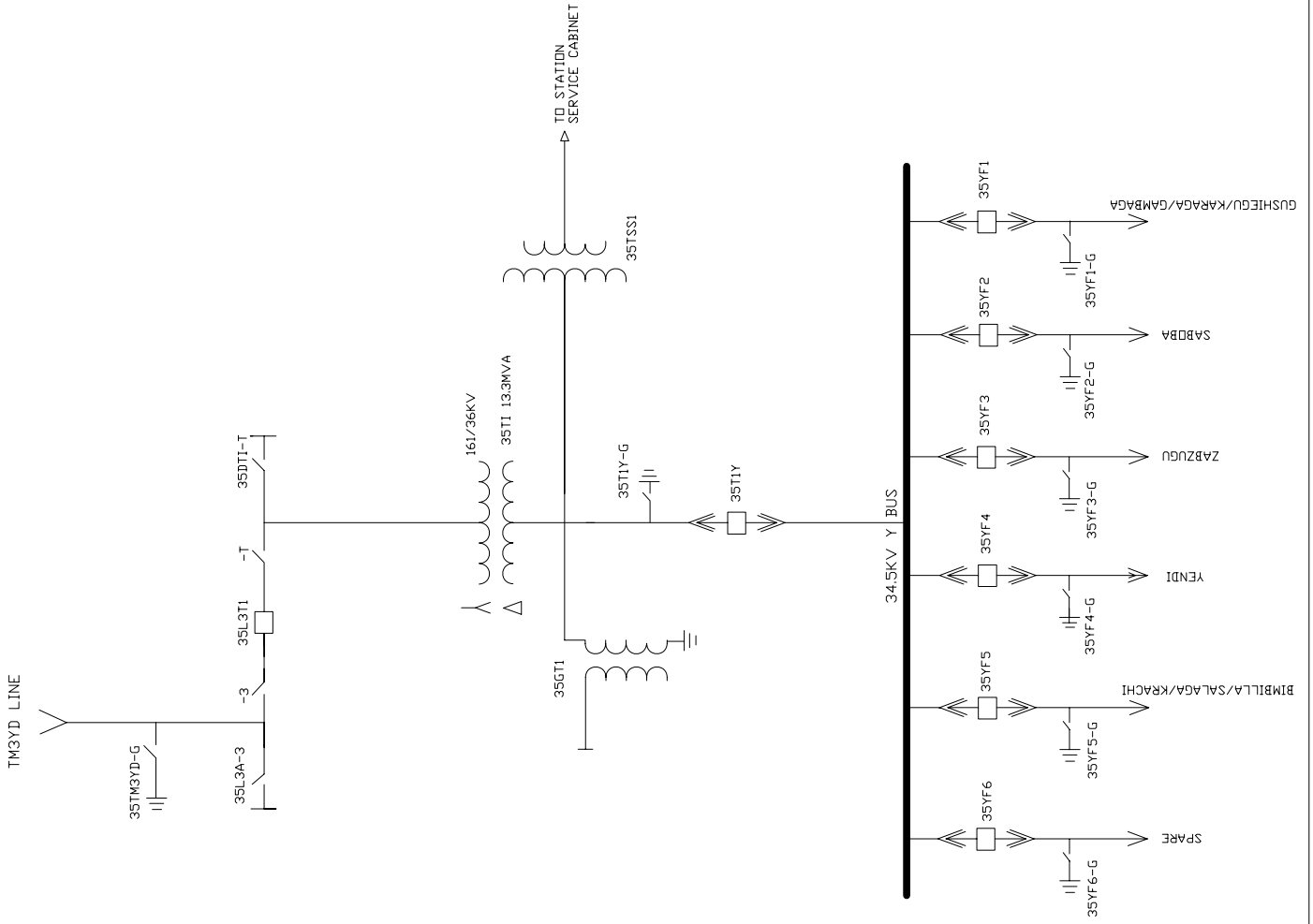
Northern

LEGEND

- X— CIRCUIT BREAKER
- |— AIR BREAKER ISOLATOR (AB)
- |— DROP OUT WITH LINKS
- DROP OUT FUSES
- TRANSFORMER AND CAPACITY KVA
- OVERHEAD LINE
- UNDERGROUND LINE
- LINE ISOLATING LINK (LIL)







Substation Name		YENDI SUBSTATION YD35	
OPERATING DIAGRAM	ISSUED	CHECKED	REVISED
DRAWN			APPROVED
DETAILS			
DATE			