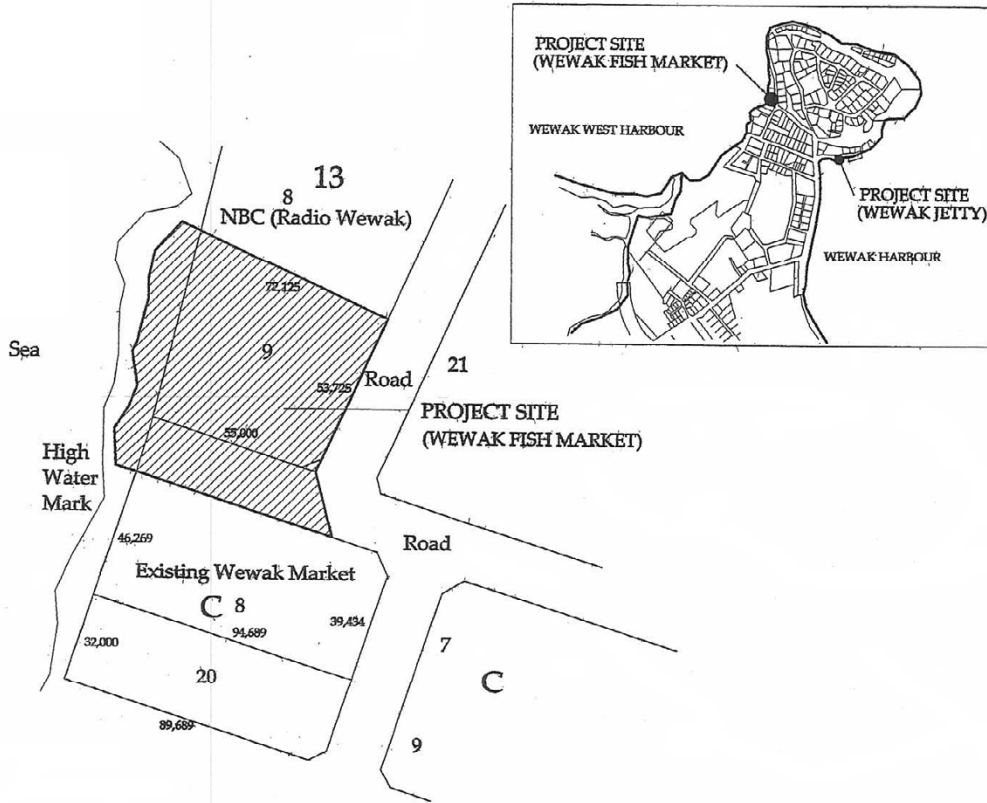
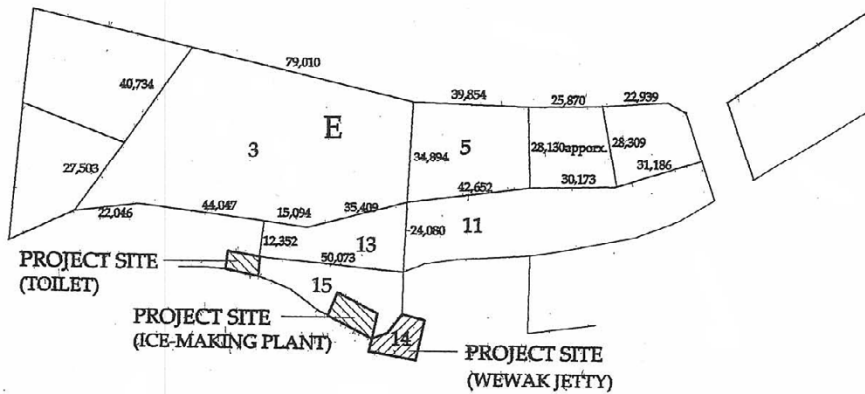


Annex-I



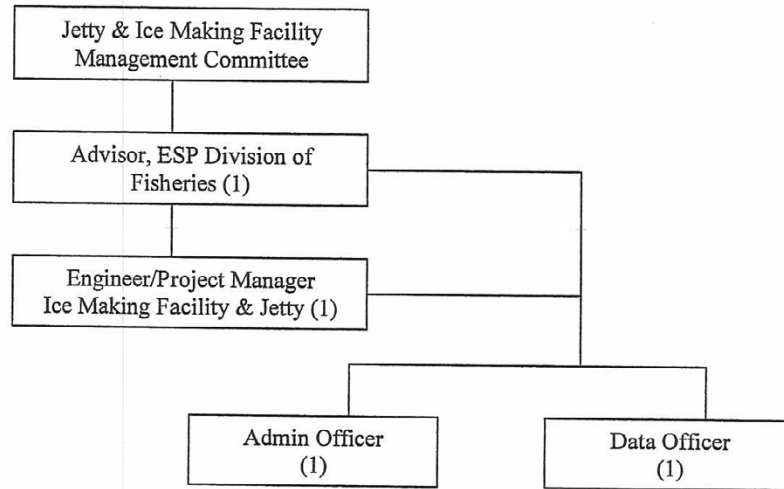
WEWAK FISH MARKET SITE SCALE: 1/2,000



WEWAK JETTY SITE SCALE: 1/2,000

Organisation chart of the Wewak Fish Market and Jetty

Jetty and Ice-Making Facility:



Jetty & Ice Making Facility Management Committee

The Jetty and Ice Making Facility will be managed by a Management Committee whose members will include a representative from the National Fisheries Authority, Provincial Division of Fisheries and Marine Resources, Provincial Planning and Wewak Town Commission.

Role of Jetty & Ice Making Facility Management Committee

The main role of the Management Committee is to establish policies to ensure the sound management of the jetty and ice-making facility and to ensure that these investments are properly operated.

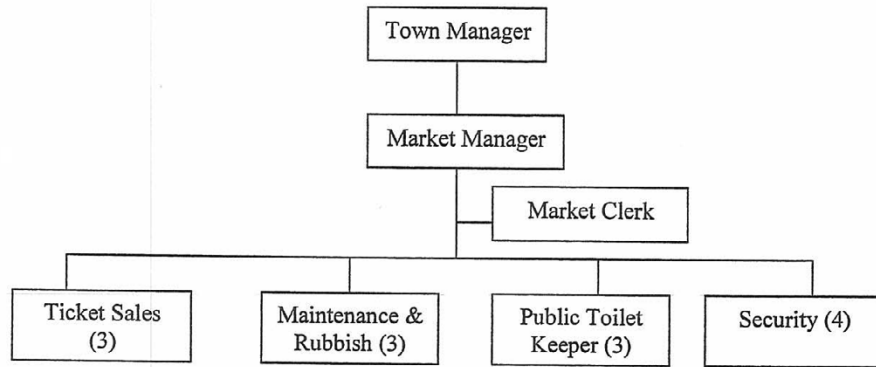
Engineer/Project Manager

The position of the motor mechanic is already established within the structure of the Division of Fisheries and Marine Resources. This position will be upgraded to be known as the Engineer/Project Manager –Ice Making Facility and Jetty. The main responsibility of this position will be to manage the facilities and to ensure their smooth operation.

Admin Officer and Data Officer

These positions are already established within the structure of the Division of Fisheries and Marine Resources. These officers will be delegated the tasks of assisting the Project Manager in the operation of the facilities.

Wewak Fish Market:



Handwritten scribble

Handwritten signature and circled number 21

Annex-III: List of Requested Components

Basic Design Study			Preliminary Study				
Component	Quantity / contents	Priority	Remarks	Component	Quantity / contents	Priority	Remarks
A.1	Market sheds with tables and benches, connected by corridors	A	Single-story, layout, number, type and sizes of the retail spaces are examined by the Basic Design Study Team (hereinafter referred to as "the Team").	Market buildings	-	A	The number of lots for each vendor type and sizes are examined by the Basic Design Study Team (hereinafter referred to as "the Team").
A.2							
A.3	Administration office building	A	Rooms and respective sizes are examined by the Team.	Administration office building	-	A	Rooms and respective sizes are examined by the Team.
A.4	Kiosk	A	The necessity and size are examined by the Team.	Kiosk	3	A	The number and size are examined by the Team.
A.5	Public toilet	A	The size is examined by the study Team.	Public toilet	-	A	The number and size are examined by the study Team.
A.6	Storage	A	The necessity and size of the place are examined by the Team.	Storage	-	A	Each size is examined by the Team.
A.7	Refreshment space	A	The necessity and size of the place are examined by the Team.	Refreshment space	-	A	The size of the rest place is examined by the Team.
A.8	Corridor	B	The necessity and size are examined by the Team.	Corridor	-	A	The size is examined by the Team.
A.9	Fencing space		The PNG side responsibility	Parking space	-		The PNG side responsibility
A.10	Bus terminal		The PNG side responsibility	Bus terminal	-		The PNG side responsibility
A.11	Fencing		The PNG side responsibility	Fencing	-		The PNG side responsibility
A.12	Pavement on the premise necessary area	A	The PNG side requested the pavement on the premise of the market in order to prevent from muddy ground condition. The necessity and type are examined by the Team.				
B.1	Reconstruction of Jetty	A	The scale is examined by the Team.	Reconstruction of Jetty	-	A	The scale is examined by the Team.
B.2	Pontoon		The PNG side responsibility	Pontoon	-		The PNG side responsibility
B.3	Ice making building	A	The rooms and respective size are examined by the Team.	Ice making building	-	A	The rooms is examined by the Team.
B.4	Ice making plant	A	Final capacity is examined by the Team (including Hand tools to maintain ice plant(1))	Ice making plant	-	A	The capacity is examined by the Team (including Hand tools to maintain ice plant(1))
B.5	Emergency generator	B	The necessity and capacity are examined by the Team.	Emergency generator	-	A	The necessity and capacity are examined by the Team.
B.6	Small Public Toilet (in place of the toilet for the Ice Making Building)	A	Instead of the toilet in the Ice Making Building the PNG side requested the public toilet in order to provide public service. The necessity and type are examined by the Team.				
C.1	Ice box	B	The necessity and quantity are examined by the Team.	Ice box	100 liters(5)	A	Request has been revised by the PNG side. The necessity and quantities are examined by the Team.
C.2	Ice box	B	The necessity and quantity are examined by the Team.	Ice box	200 liters(5)	A	Request has been revised by the PNG side. The necessity and quantities are examined by the Team.
C.3	Scale	A	The necessity and quantity are examined by the Team.	Scales	100kg(1)	A	The necessity and quantity are examined by the Team.

	Maintenance tools	sec B4	Maintenance tools	70kg/sq centi meters(2)	sec B4
C.3	High pressure washer	The PNG side responsibility	High pressure washer		B
C.6	Hoses, cleaning tools, tables, chairs and etc	The PNG side responsibility	Hoses, cleaning tools, tables, chairs and etc		The PNG side responsibility
C.7	4WD double cabin, 500kg loading(1)	The PNG side responsibility	4WD double cabin, 300kg loading(1)		The PNG side responsibility
C.8	Desktop type with 17 LCD,USP and software(2)	The PNG side responsibility	Desktop type with 17 LCD,USP and software(2)		The PNG side responsibility
C.9	Ink jet type, A4size,600x1,200dpi(2)	The PNG side responsibility	Ink jet type, A4size,600x1,200dpi(2)		The PNG side responsibility
C.10	Desks, chairs, cabinet, notice boards and etc	The PNG side responsibility	Desks, chairs, cabinet, notice boards and etc		The PNG side responsibility

A: the top priority or very urgent portion
 B:unavoidable but not the top priority
 C:desirable if improved within the Project

US