

**PART III : DRAWINGS OF DEVELOPMENT OF CENTRALIZED MATERIAL
RECOVERY FACILITY ON BORACAY ISLAND**

DEVELOPMENTS OF CENTRALIZED MATERIAL RECOVERY FACILITY ON BORACAY ISLAND

DRAWINGS

Malay, Boracay Island 2008

PREPARED BY :



NIPPON KOEI CO., LTD.

2. Kojimachi 4-chome, Chiyoda-ku
Tokyo 102-0083 JAPAN
Phone : +81-3-5276-3930 Fax : +81-3-5276-2656
E-mail : int.e@gx.n-koei.co.jp
<http://www.n-koei.co.jp>

LIST OF DRAWINGS


DESCRIPTION :

SET NO.

DWRG. NO.


TOPOGRAPHIC SURVEY RESULT, ARCHITECTURAL & CIVIL DRAWING

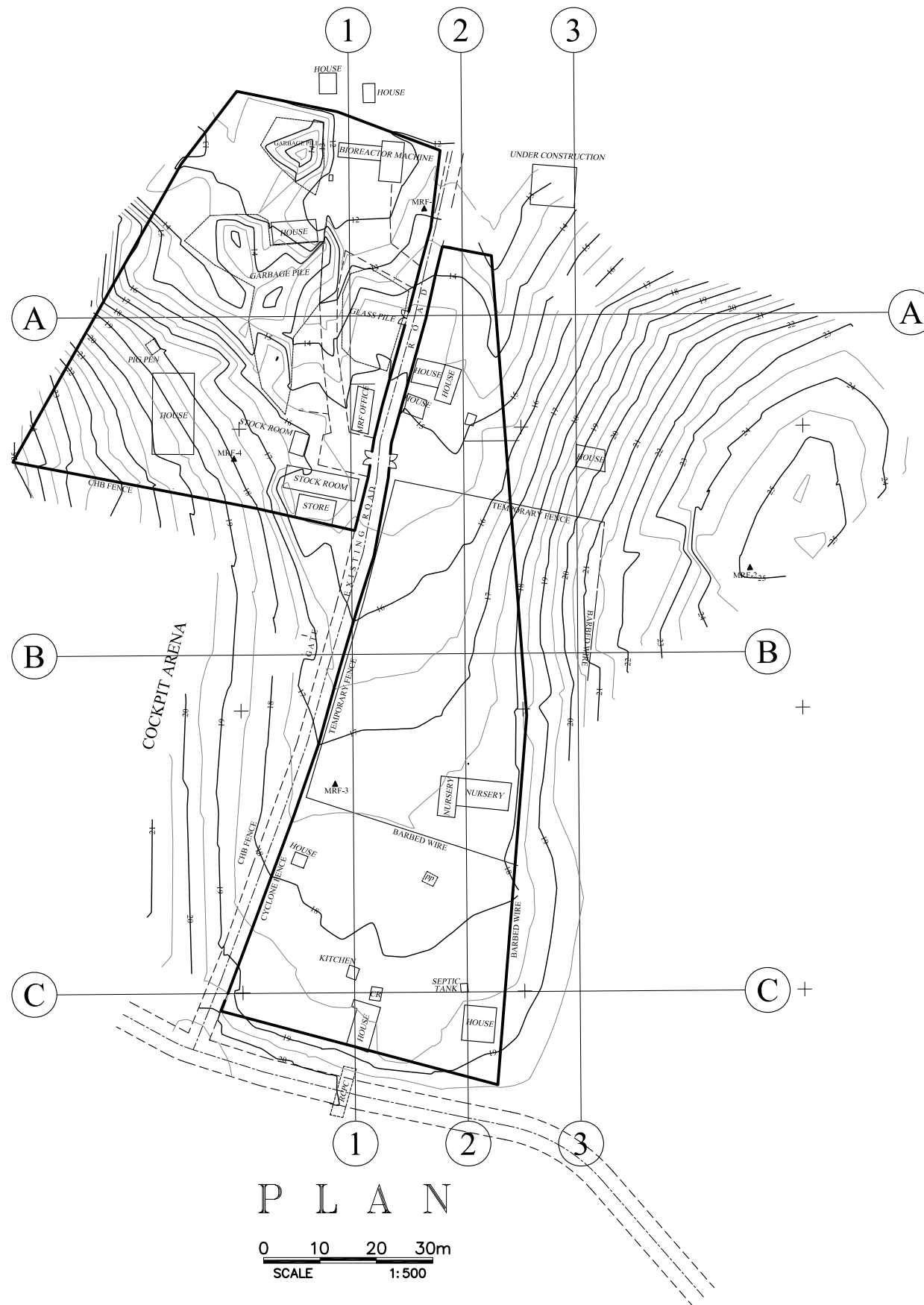
TOPOGRAPHIC MAP -----	1 OF 26 -----	P - 01
CROSS SECTION (LINE-1) OF TOPOGRAPHIC MAP -----	2 OF 26 -----	P - 02
CROSS SECTION (LINE-2) OF TOPOGRAPHIC MAP -----	3 OF 26 -----	P - 03
CROSS SECTION (LINE-3) OF TOPOGRAPHIC MAP -----	4 OF 26 -----	P - 04
CROSS SECTION (LINE-A) OF TOPOGRAPHIC MAP -----	5 OF 26 -----	P - 05
CROSS SECTION (LINE-B) OF TOPOGRAPHIC MAP -----	6 OF 26 -----	P - 06
CROSS SECTION (LINE-C) OF TOPOGRAPHIC MAP -----	7 OF 26 -----	P - 07
SITE DEVELOPMENT LAYOUT PLAN OF MRF FACILITY (PHASE I, II, III) -----	8 OF 26 -----	P - 08
DRAINAGE PLAN OF PHASE I -----	9 OF 26 -----	P - 09
DRAINAGE PLAN OF PHASE II -----	10 OF 26 -----	P - 10
DRAINAGE PLAN OF PHASE III -----	11 OF 26 -----	P - 11
OFFICE BUILDING = 196 SQM (PHASE I, II, III) -----	12 OF 26 -----	P - 12
BIODEGRADABLE & RECYLABLE HANDLING AREA = 276 SQM (PHASE I) -----	13 OF 26 -----	P - 13
BIODEGRADABLE HANDLING AREA = 500 SQM (PHASE II, III) -----	14 OF 26 -----	P - 14
DETAIL OF BIOREACTOR -----	15 OF 26 -----	P - 15

PROJECT TITLE:	CLIENT:	CONSULTANT:	DRAWING TITLE:	DESIGNED BY:	DRAWING CONTENT:
THE MASTER PLAN ON SOLID WASTE MANAGEMENT FOR BORACAY ISLAND AND MALAY MUNICIPALITY	JAPAN INTERNATIONAL COOPERATION AGENCY	 NIPPON KOEI CO., LTD. 2, Kojimachi 4-chome, Chiyoda-ku Tokyo 102-0083 JAPAN Phone : +81-3-5276-3930 Fax : +81-3-5276-2656 E-mail : int.a@nx.n-koei.co.jp http://www.n-koei.co.jp	DEVELOPMENT OF CENTRALIZED MATERIAL RECOVERY FACILITY ON BORACAY ISLAND	DRAWN BY:	LIST OF DRAWINGS
				CHECKED BY:	
				APPROVED BY:	
				DATE: January 2008	


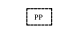

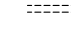
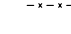




LIST OF DRAWINGS

DESCRIPTION :	SET NO.	DWRG. NO.
CURING AREA FOR COMPOST = 443 SQM (PHASE I, II, III) -----	16 OF 26 -----	P - 16
RECYCLABLE HANDLING AREA = 300 SQM (PHASE II, III) -----	17 OF 26 -----	P - 17
DETAIL OF UNLOADING AREA @ RECYCLABLE HANDLING AREA -----	18 OF 26 -----	P - 18
STORAGE AREA OF RECYCLABLE = 312 SQM (PHASE II, III) -----	19 OF 26 -----	P - 19
RECYCLING PROMOTION CENTER = 86 SQM (PHASE III) -----	20 OF 26 -----	P - 20
OPERATION PLAN OF COLLECTION VEHICLE PHASE I -----	21 OF 26 -----	P - 21
OPERATION PLAN OF COLLECTION VEHICLE FOR BIODEGRADABLE (PHASE II, III) -----	22 OF 26 -----	P - 22
OPERATION PLAN OF COLLECTION VEHICLE FOR RECYCLABLE (PHASE II, III)-----	23 OF 26 -----	P - 23
OPERATION PLAN OF COLLECTION VEHICLE FOR RESIDUAL (PHASE II, III)-----	24 OF 26 -----	P - 24
OPERATION PLAN OF BIODEGRADABLE HANDLING AREA (PHASE II, III,) -----	25 OF 26 -----	P - 25
OPERATION PLAN OF RECYCLABLE HANDLING AREA (PHASE II, III) -----	26 OF 26 -----	P - 26

PROJECT TITLE:	CLIENT:	CONSULTANT:	DRAWING TITLE:	DESIGNED BY:	DRAWING CONTENT:
THE MASTER PLAN ON SOLID WASTE MANAGEMENT FOR BORACAY ISLAND AND MALAY MUNICIPALITY	JAPAN INTERNATIONAL COOPERATION AGENCY	 NIPPON KOEI CO., LTD. 2, Kojimachi 4-chome, Chiyoda-ku Tokyo 102-0083 JAPAN Phone : +81-3-5276-3930 Fax : +81-3-5276-2656 E-mail : int.a@nx.n-koei.co.jp http://www.n-koei.co.jp	DEVELOPMENT OF CENTRALIZED MATERIAL RECOVERY FACILITY ON BORACAY ISLAND	DRAWN BY:	LIST OF DRAWINGS
				CHECKED BY:	
				APPROVED BY:	
				DATE: January 2008	



LEGEND

-  BUILDING / HOUSE / NEPA HUT
-  PIG PEN
-  SEPTIC TANK
-  EXISTING ROAD
-  BARBED WIRE
-  MAJOR CONTOUR
-  MINOR CONTOUR
-  CHB WALL
-  GPS CONTROL STATION / BENCH MARKS

PHILIPPINE REFERENCE SYSTEM 1992

HORIZONTAL DATUM: GPS STATION AKN-17 AND AKN-20, ESTABLISHED BY NAMRIA
BRGY. POBLACION, BURUANGA, AKLAN AND BRGY. PINATUAD, NABAS, AKLAN


VERTICAL DATUM: MEAN SEA LEVEL
BENCH MARK AK-B-2, BRGY. POBLACION, NABAS, AKLAN
COAST AND GEODETIC SURVEY 1959

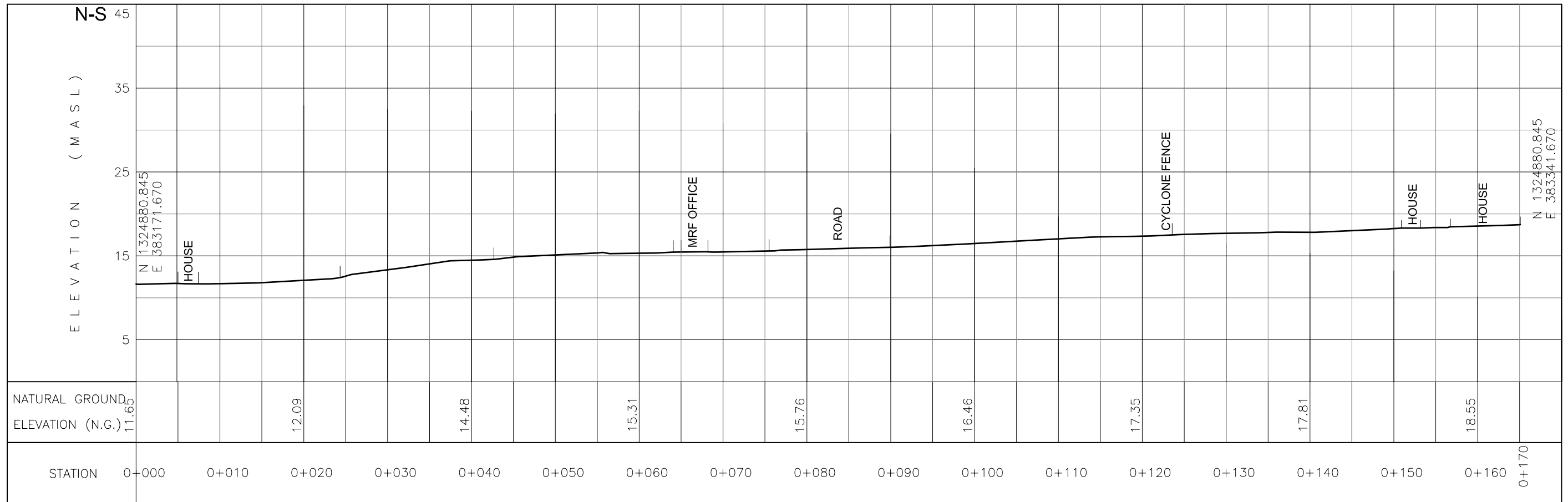
CONTROL POINTS

MRF-01	N 1321815.644	E 384702.212	ELEV.=12.877 M.
MRF-02	N 1321752.015	E 384760.011	ELEV.=25.188 M.
MRF-03	N 1321713.563	E 384686.428	ELEV.=17.435 M.
MRF-04	N 1321771.226	E 384668.467	ELEV.=17.944 M.

P L A N

0 10 20 30m
SCALE 1:500

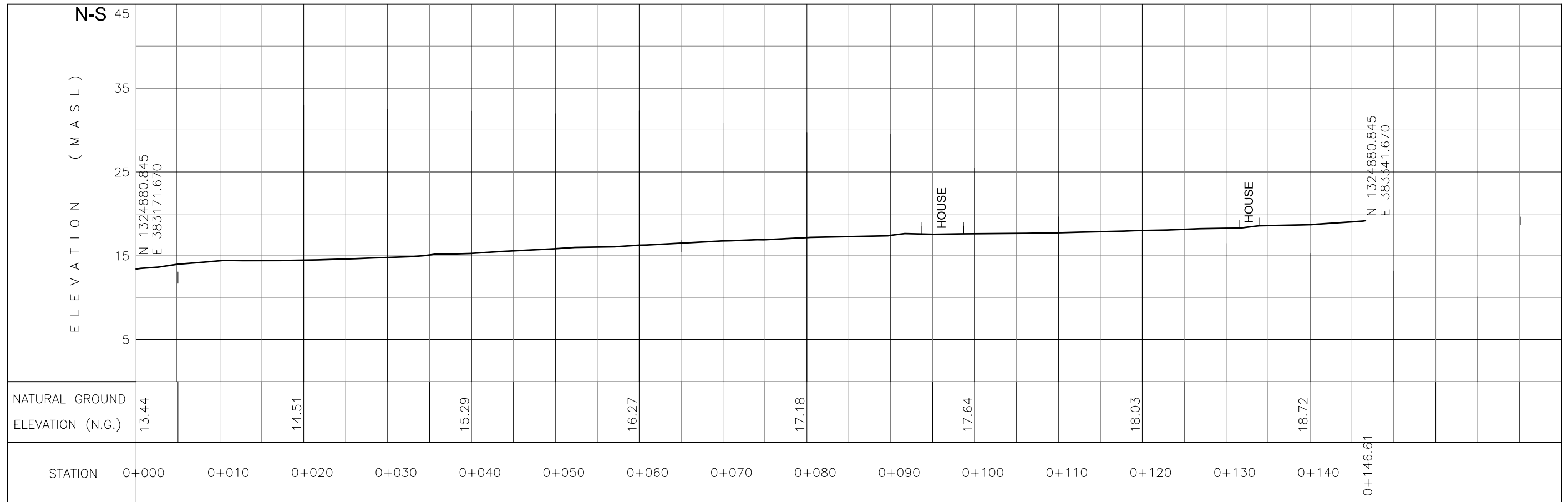
PROJECT TITLE:	CLIENT:	CONSULTANT:	SUB COMPONENT:	DESIGNED BY:	DRAWING TITLE:	DRWG. NO.
THE MASTER PLAN ON SOLID WASTE MANAGEMENT FOR BORACAY ISLAND AND MALAY MUNICIPALITY	JAPAN INTERNATIONAL COOPERATION AGENCY	 NIPPON KOEI CO., LTD. 2, Kojimachi 4-chome, Chiyoda-ku Tokyo 102-0083 JAPAN Phone : +81-3-5276-3930 Fax : +81-3-5276-2656 E-mail : int.e@qx.n-koei.co.jp http://www.n-koei.co.jp	DEVELOPMENT OF CENTRALIZED MATERIAL RECOVERY FACILITY ON BORACAY ISLAND	DRAWN BY:	TOPOGRAPHIC MAP	P-01
				CHECKED BY:		
				APPROVED BY:		
				DATE: January 2008		
						SET NO. 1 OF 26



LINE-1 CROSS SECTION



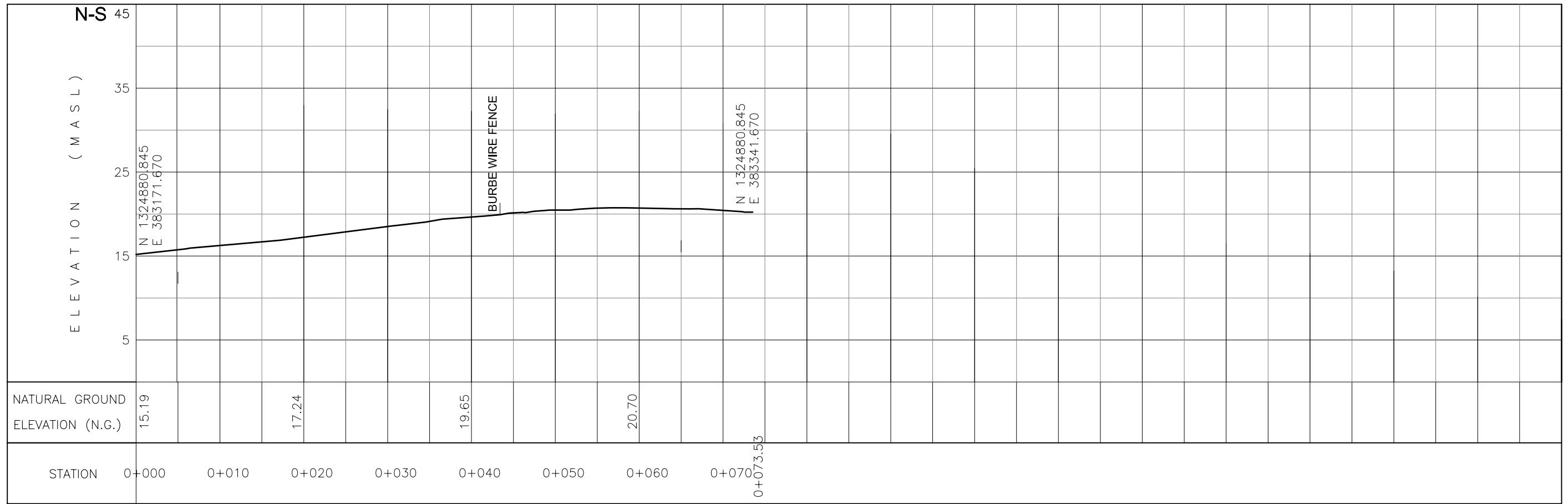
PROJECT TITLE:	CLIENT:	CONSULTANT:	SUB COMPONENT:	DESIGNED BY:	DRAWING TITLE:	DRWG. NO.
THE MASTER PLAN ON SOLID WASTE MANAGEMENT FOR BORACAY ISLAND AND MALAY MUNICIPALITY	JAPAN INTERNATIONAL COOPERATION AGENCY	NIPPON KOEI CO., LTD. <small>2, Kojimachi 4-chome, Chiyoda-ku Tokyo 102-0083 JAPAN Phone : +81-3-5276-3930 Fax : +81-3-5276-2656 E-mail : int.a@gx.n-koei.co.jp http://www.n-koei.co.jp.</small>	DEVELOPMENT OF CENTRALIZED MATERIAL RECOVERY FACILITY ON BORACAY ISLAND	DRAWN BY:	CROSS SECTION (LINE-1) OF TOPOGRAPHIC MAP	P-02
				CHECKED BY:		
				APPROVED BY:		
				DATE: January 2008		
						SET NO. 2 OF 26



LINE-2 CROSS SECTION



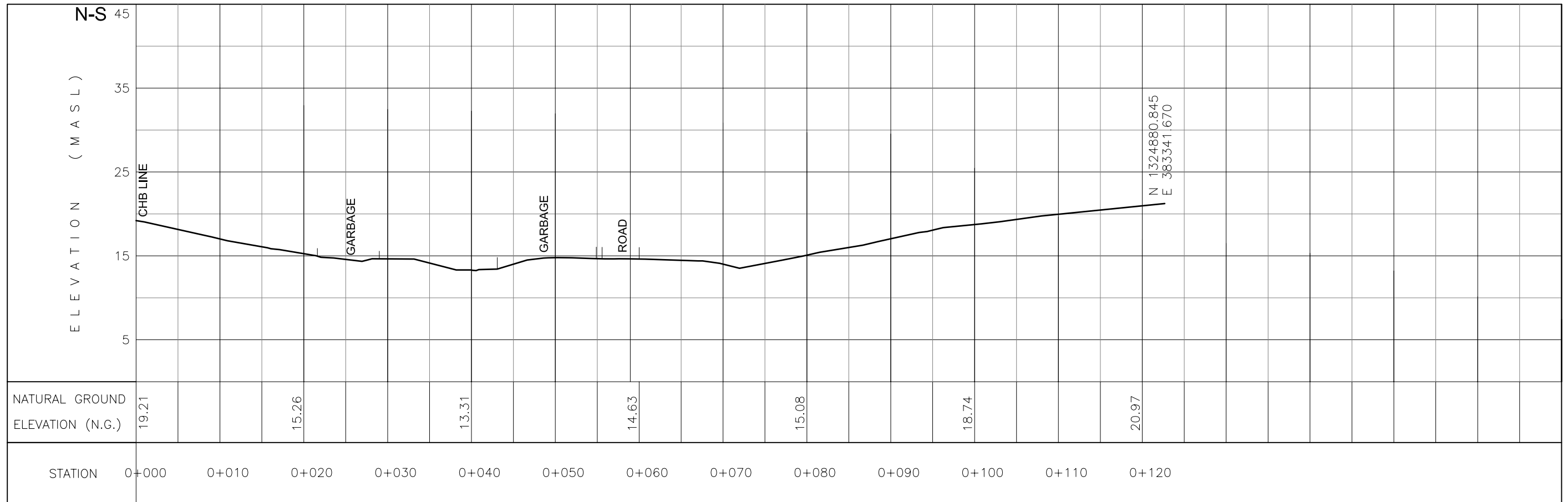
PROJECT TITLE:	CLIENT:	CONSULTANT:	SUB COMPONENT:	DESIGNED BY:	DRAWING TITLE:	DRWG. NO.
THE MASTER PLAN ON SOLID WASTE MANAGEMENT FOR BORACAY ISLAND AND MALAY MUNICIPALITY	JAPAN INTERNATIONAL COOPERATION AGENCY	 NIPPON KOEI CO., LTD. <small>2, Kojimachi 4-chome, Chiyoda-ku Tokyo 102-0083 JAPAN Phone : +81-3-5276-3930 Fax : +81-3-5276-2656 E-mail : int.a@gx.n-koei.co.jp http://www.n-koei.co.jp.</small>	DEVELOPMENT OF CENTRALIZED MATERIAL RECOVERY FACILITY ON BORACAY ISLAND	DRAWN BY:	CROSS SECTION (LINE-2) OF TOPOGRAPHIC MAP	P-03
				CHECKED BY:		
				APPROVED BY:		
				DATE: January 2008		
						SET NO. 3 OF 26



LINE-3 CROSS SECTION



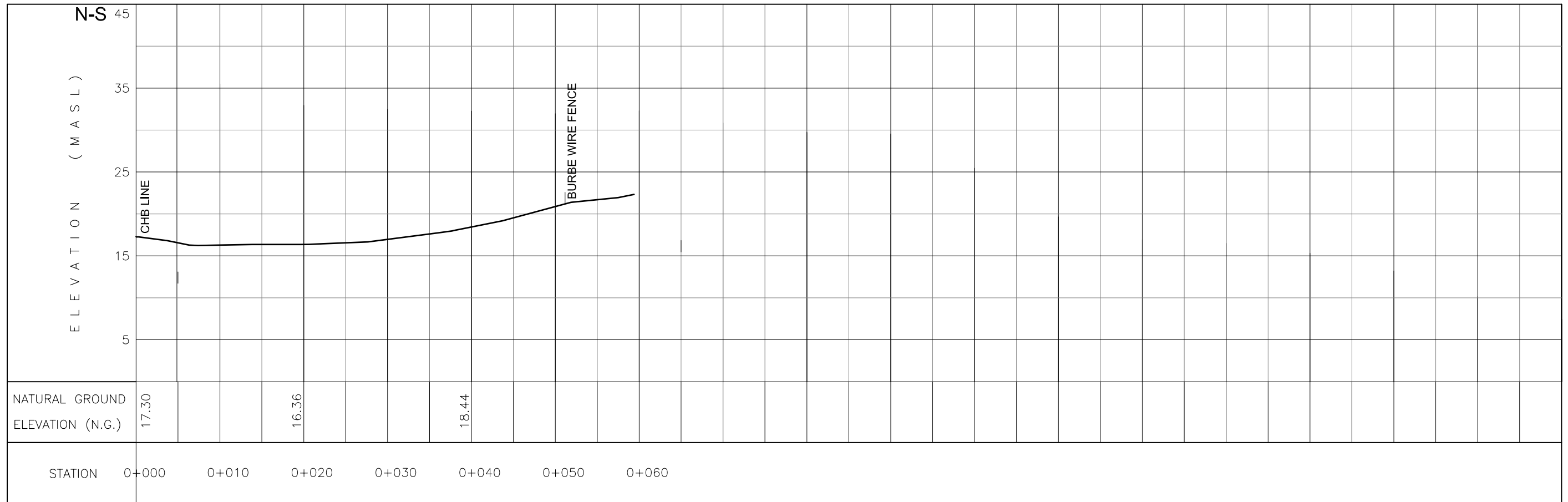
PROJECT TITLE:	CLIENT:	CONSULTANT:	SUB COMPONENT:	DESIGNED BY:	DRAWING TITLE:	DRWG. NO.
THE MASTER PLAN ON SOLID WASTE MANAGEMENT FOR BORACAY ISLAND AND MALAY MUNICIPALITY	JAPAN INTERNATIONAL COOPERATION AGENCY	 NIPPON KOEI CO., LTD. <small>2. Kojimachi 4-chome, Chiyoda-ku Tokyo 102-0083 JAPAN Phone : +81-3-5276-3930 Fax : +81-3-5276-2656 E-mail : int.a@gx.n-koei.co.jp http://www.n-koei.co.jp.</small>	DEVELOPMENT OF CENTRALIZED MATERIAL RECOVERY FACILITY ON BORACAY ISLAND	DRAWN BY:	CROSS SECTION (LINE-3) OF TOPOGRAPHIC MAP	P-04
				CHECKED BY:		
				APPROVED BY:		
				DATE: January 2008		
						SET NO. 4 OF 26



LINE-A CROSS SECTION



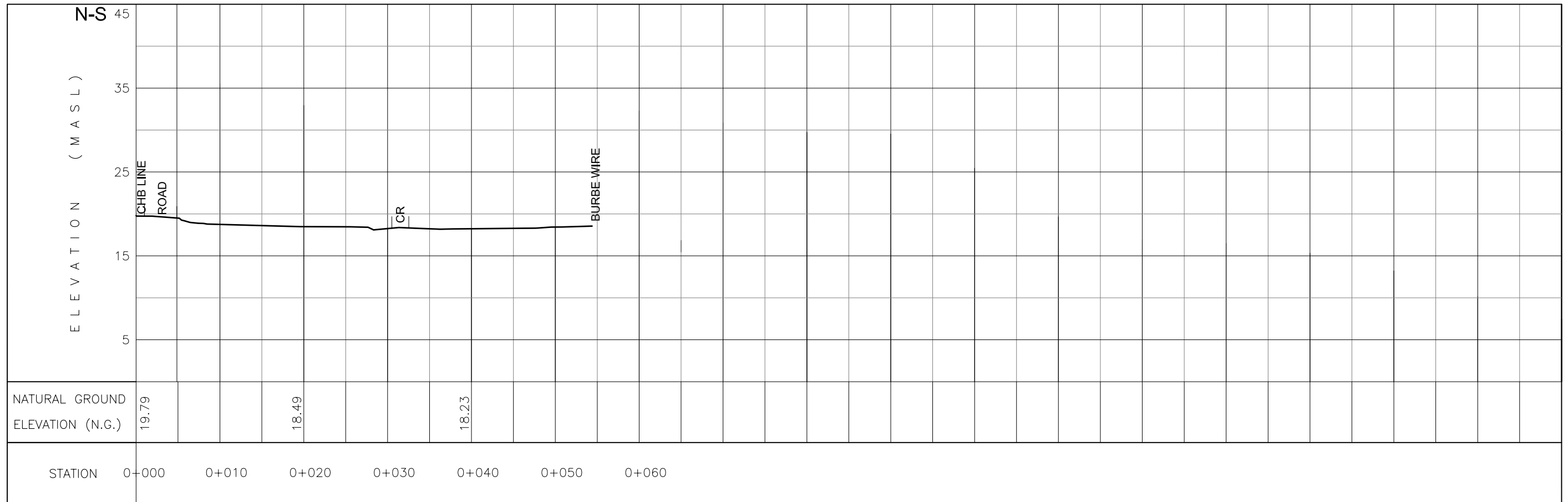
PROJECT TITLE:	CLIENT:	CONSULTANT:	SUB COMPONENT:	DESIGNED BY:	DRAWING TITLE:	DRWG. NO.
THE MASTER PLAN ON SOLID WASTE MANAGEMENT FOR BORACAY ISLAND AND MALAY MUNICIPALITY	JAPAN INTERNATIONAL COOPERATION AGENCY	NIPPON KOEI CO., LTD. <small>2, Kojimachi 4-chome, Chiyoda-ku Tokyo 102-0083 JAPAN Phone : +81-3-5276-3930 Fax : +81-3-5276-2656 E-mail : int.a@gx.n-koei.co.jp http://www.n-koei.co.jp.</small>	DEVELOPMENT OF CENTRALIZED MATERIAL RECOVERY FACILITY ON BORACAY ISLAND	DRAWN BY:	CROSS SECTION (LINE-A) OF TOPOGRAPHIC MAP	P-05
				CHECKED BY:		
				APPROVED BY:		
				DATE: January 2008		
						SET NO. 5 OF 26



LINE-B CROSS SECTION



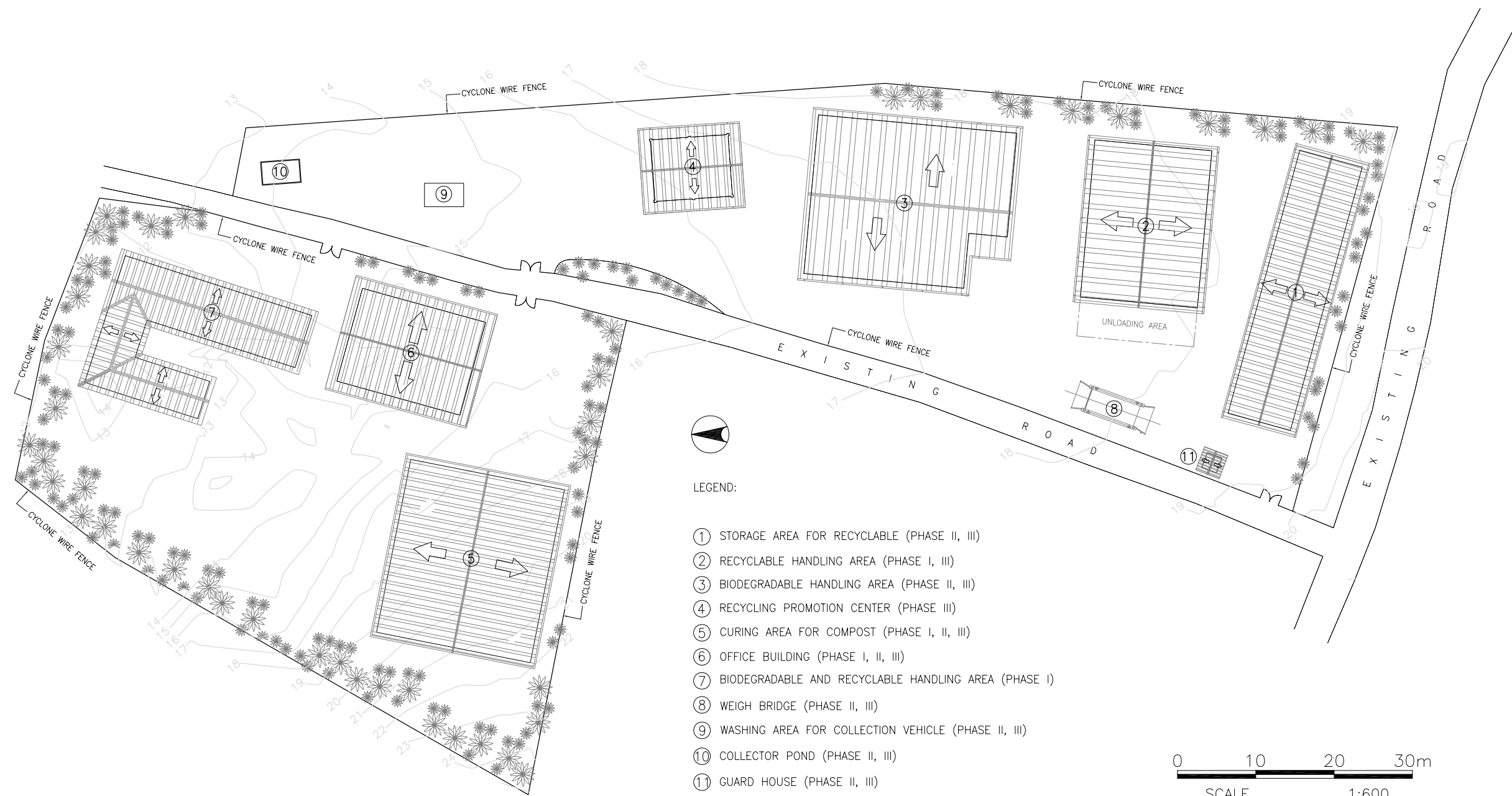
PROJECT TITLE:	CLIENT:	CONSULTANT:	SUB COMPONENT:	DESIGNED BY:	DRAWING TITLE:	DRWG. NO.
THE MASTER PLAN ON SOLID WASTE MANAGEMENT FOR BORACAY ISLAND AND MALAY MUNICIPALITY	JAPAN INTERNATIONAL COOPERATION AGENCY	NIPPON KOEI CO., LTD. <small>2, Kojimachi 4-chome, Chiyoda-ku Tokyo 102-0083 JAPAN Phone : +81-3-5276-3930 Fax : +81-3-5276-2656 E-mail : int.a@nx.n-koei.co.jp http://www.n-koei.co.jp.</small>	DEVELOPMENT OF CENTRALIZED MATERIAL RECOVERY FACILITY ON BORACAY ISLAND	DRAWN BY:	CROSS SECTION (LINE-B) OF TOPOGRAPHIC MAP	P-06
				CHECKED BY:		
				APPROVED BY:		
				DATE: January 2008		
						SET NO. 6 OF 26



LINE-C CROSS SECTION




PROJECT TITLE:	CLIENT:	CONSULTANT:	SUB COMPONENT:	DESIGNED BY:	DRAWING TITLE:	DRWG. NO.
THE MASTER PLAN ON SOLID WASTE MANAGEMENT FOR BORACAY ISLAND AND MALAY MUNICIPALITY	JAPAN INTERNATIONAL COOPERATION AGENCY	 NIPPON KOEI CO., LTD. <small>2, Kojimachi 4-chome, Chiyoda-ku Tokyo 102-0083 JAPAN Phone : +81-3-5276-3930 Fax : +81-3-5276-2656 E-mail : int.a@nx.n-koei.co.jp http://www.n-koei.co.jp.</small>	DEVELOPMENT OF CENTRALIZED MATERIAL RECOVERY FACILITY ON BORACAY ISLAND	DRAWN BY:	CROSS SECTION (LINE-C) OF TOPOGRAPHIC MAP	P-07
				CHECKED BY:		
				APPROVED BY:		
				DATE: January 2008		
						SET NO. 7 OF 26



- LEGEND:
- ① STORAGE AREA FOR RECYCLABLE (PHASE II, III)
 - ② RECYCLABLE HANDLING AREA (PHASE I, III)
 - ③ BIODEGRADABLE HANDLING AREA (PHASE II, III)
 - ④ RECYCLING PROMOTION CENTER (PHASE III)
 - ⑤ CURING AREA FOR COMPOST (PHASE I, II, III)
 - ⑥ OFFICE BUILDING (PHASE I, II, III)
 - ⑦ BIODEGRADABLE AND RECYCLABLE HANDLING AREA (PHASE I)
 - ⑧ WEIGH BRIDGE (PHASE II, III)
 - ⑨ WASHING AREA FOR COLLECTION VEHICLE (PHASE II, III)
 - ⑩ COLLECTOR POND (PHASE II, III)
 - ⑪ GUARD HOUSE (PHASE II, III)

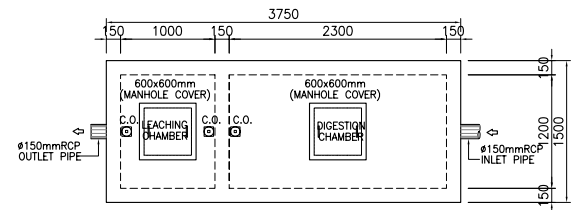
0 10 20 30m
SCALE 1:600

SITE DEVELOPMENT LAYOUT PLAN OF MRF FACILITY (PHASE I, II, III)
SCALE 1:600M

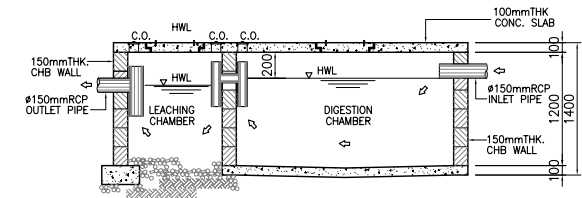
PROJECT TITLE:	CLIENT:	CONSULTANT:	DRAWING TITLE:	DESIGNED BY:	DRAWING CONTENT:	DRWG. NO.
THE MASTER PLAN ON SOLID WASTE MANAGEMENT FOR BORACAY ISLAND AND MALAY MUNICIPALITY	JAPAN INTERNATIONAL COOPERATION AGENCY	 NIPPON KOEI CO., LTD. 2, Kojimachi 4-chome, Chiyoda-ku Tokyo 102-0083 JAPAN Phone : +81-3-5276-3930 Fax : +81-3-5276-2656 E-mail : int.e@nx.n-koei.co.jp http://www.n-koei.co.jp	DEVELOPMENT OF CENTRALIZED MATERIAL RECOVERY FACILITY ON BORACAY ISLAND	DRAWN BY: CHECKED BY: APPROVED BY: DATE: January 2008	SITE DEVELOPMENT LAYOUT PLAN OF MRF FACILITY (PHASE I, II, III)	P-08 SET NO. 8 OF 26



1 DET. OF TRIANGULAR EARTH CANAL
 P-02P-02 NOT TO SCALE

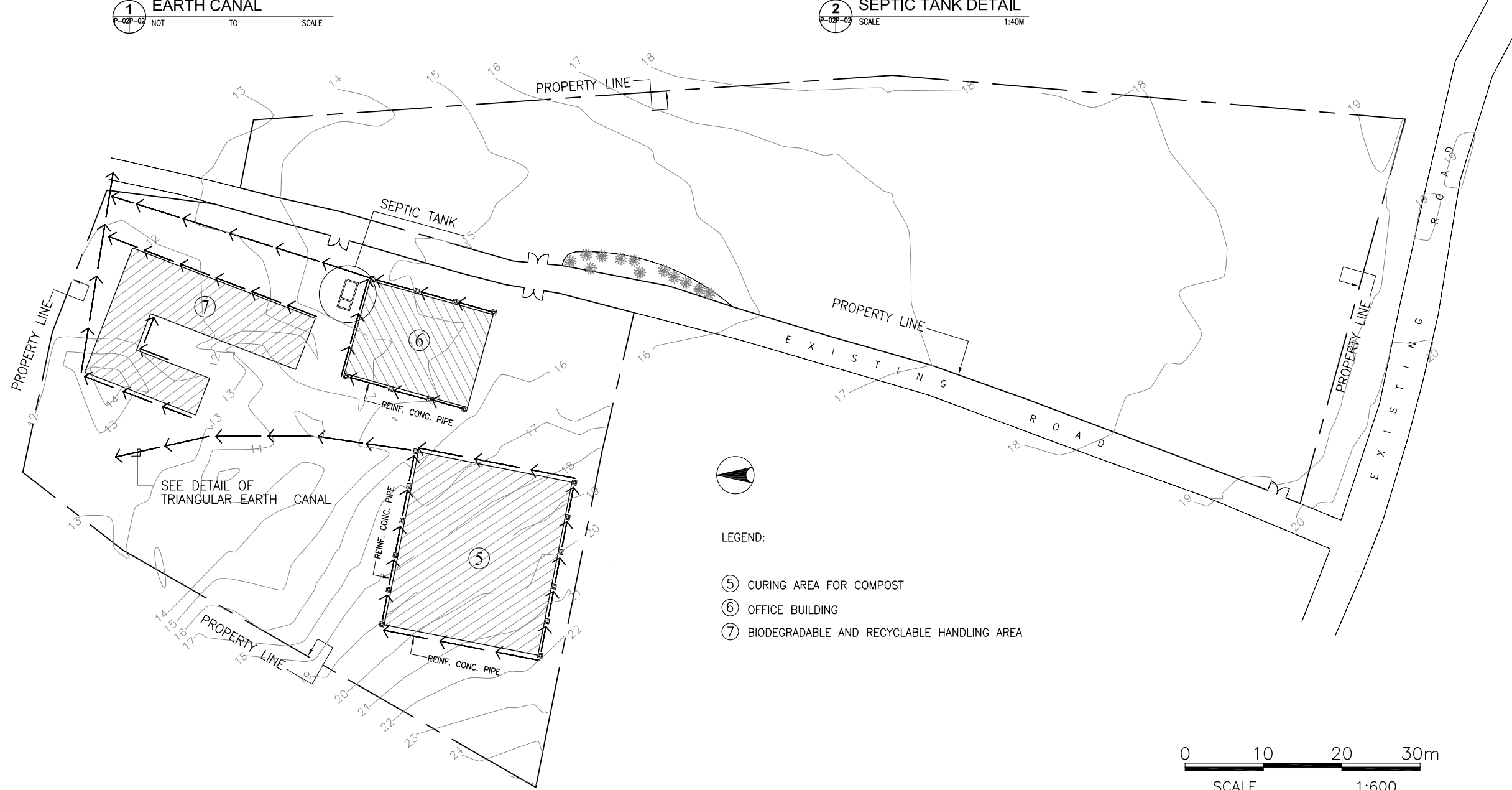


PLAN



2 SEPTIC TANK DETAIL
 P-02P-02 SCALE 1:40M


SECTION

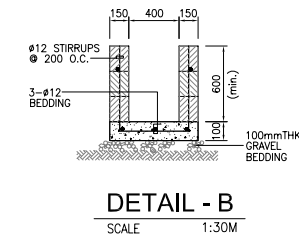
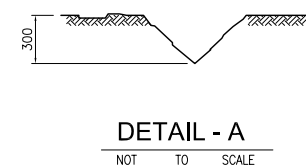
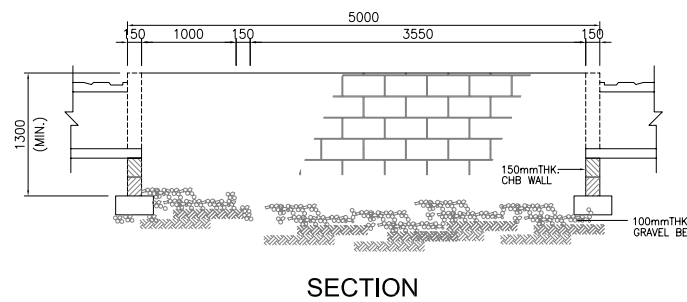
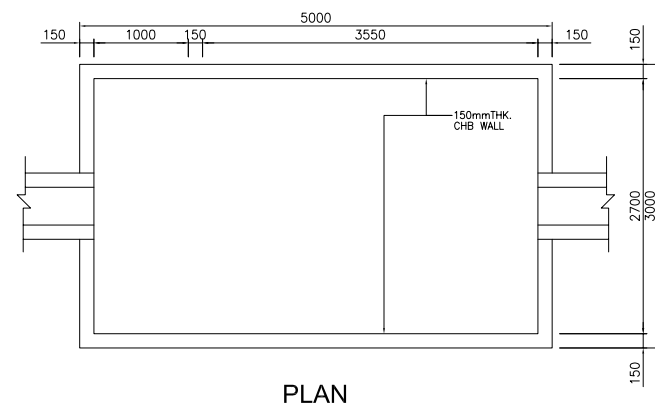


- LEGEND:
- ⑤ CURING AREA FOR COMPOST
 - ⑥ OFFICE BUILDING
 - ⑦ BIODEGRADABLE AND RECYCLABLE HANDLING AREA

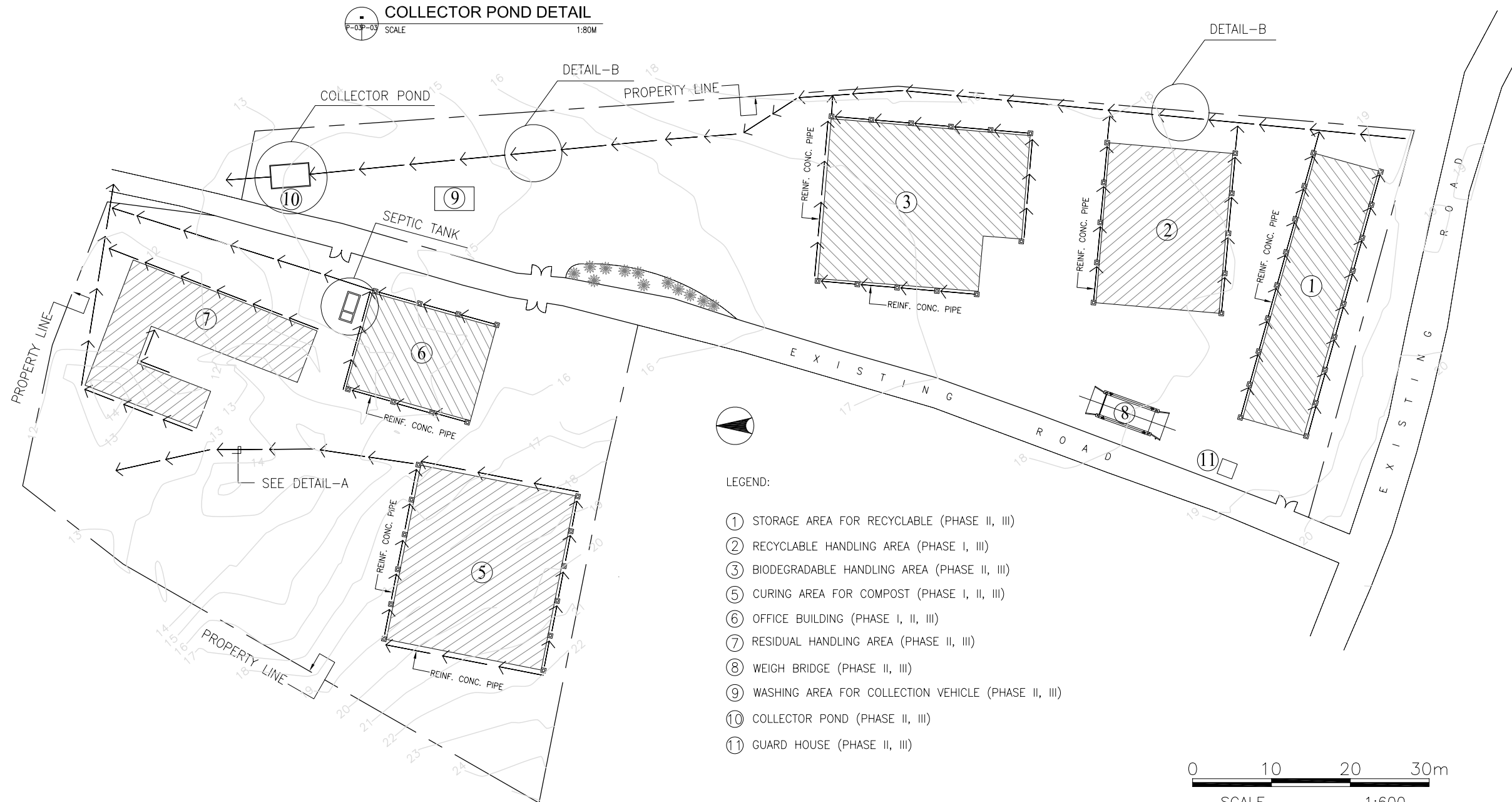


DRAINAGE PLAN OF PHASE I
 P-02P-02 SCALE 1:600M

PROJECT TITLE:	CLIENT:	CONSULTANT:	DRAWING TITLE:	DESIGNED BY:	DRAWING CONTENT:	DRWG. NO.
THE MASTER PLAN ON SOLID WASTE MANAGEMENT FOR BORACAY ISLAND AND MALAY MUNICIPALITY	JAPAN INTERNATIONAL COOPERATION AGENCY	 NIPPON KOEI CO., LTD. 2, Kojimachi 4-chome, Chiyoda-ku Tokyo 102-0083 JAPAN Phone : +81-3-5276-3930 Fax : +81-3-5276-2656 E-mail : int.a@n-koei.co.jp http://www.n-koei.co.jp	DEVELOPMENT OF CENTRALIZED MATERIAL RECOVERY FACILITY ON BORACAY ISLAND	DRAWN BY: CHECKED BY: APPROVED BY: DATE: January 2008	DRAINAGE PLAN OF PHASE I	P-09 SET NO. 9 OF 26




COLLECTOR POND DETAIL
SCALE 1:80M



- LEGEND:
- ① STORAGE AREA FOR RECYCLABLE (PHASE II, III)
 - ② RECYCLABLE HANDLING AREA (PHASE I, III)
 - ③ BIODEGRADABLE HANDLING AREA (PHASE II, III)
 - ⑤ CURING AREA FOR COMPOST (PHASE I, II, III)
 - ⑥ OFFICE BUILDING (PHASE I, II, III)
 - ⑦ RESIDUAL HANDLING AREA (PHASE II, III)
 - ⑧ WEIGH BRIDGE (PHASE II, III)
 - ⑨ WASHING AREA FOR COLLECTION VEHICLE (PHASE II, III)
 - ⑩ COLLECTOR POND (PHASE II, III)
 - ⑪ GUARD HOUSE (PHASE II, III)

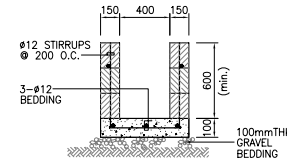


DRAINAGE PLAN OF PHASE II
SCALE 1:600M

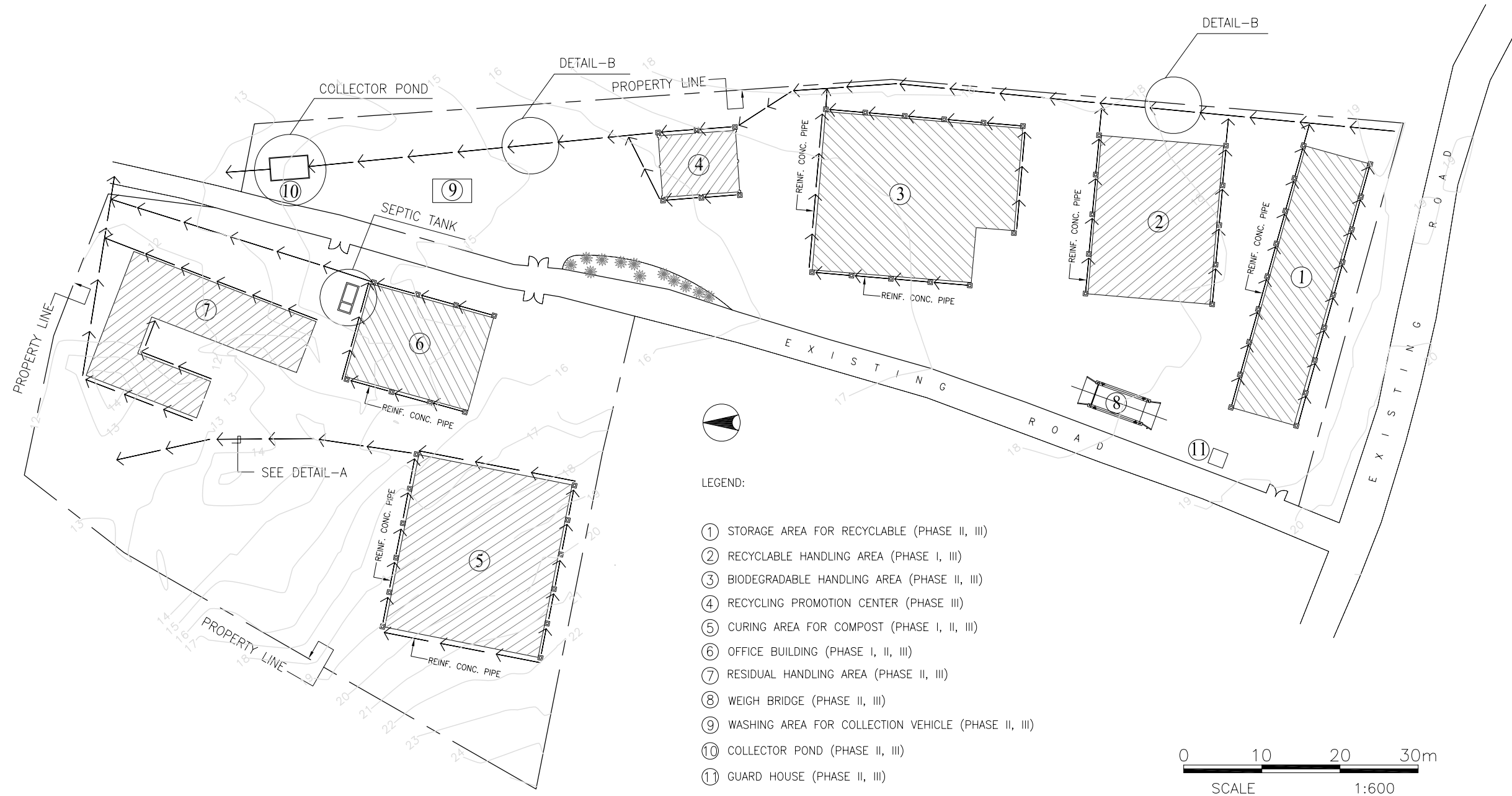
PROJECT TITLE:	CLIENT:	CONSULTANT:	DRAWING TITLE:	DESIGNED BY:	DRAWING CONTENT:	DRWG. NO.
THE MASTER PLAN ON SOLID WASTE MANAGEMENT FOR BORACAY ISLAND AND MALAY MUNICIPALITY	JAPAN INTERNATIONAL COOPERATION AGENCY	 NIPPON KOEI CO., LTD. 2, Kojimachi 4-chome, Chiyoda-ku Tokyo 102-0083 JAPAN Phone : +81-3-5276-3930 Fax : +81-3-5276-2656 E-mail : int.e@n-koei.co.jp http://www.n-koei.co.jp	DEVELOPMENT OF CENTRALIZED MATERIAL RECOVERY FACILITY ON BORACAY ISLAND	DRAWN BY: CHECKED BY: APPROVED BY: DATE: January 2008	DRAINAGE PLAN OF PHASE II	P-10 SET NO. 10 OF 26




DETAIL - A
NOT TO SCALE

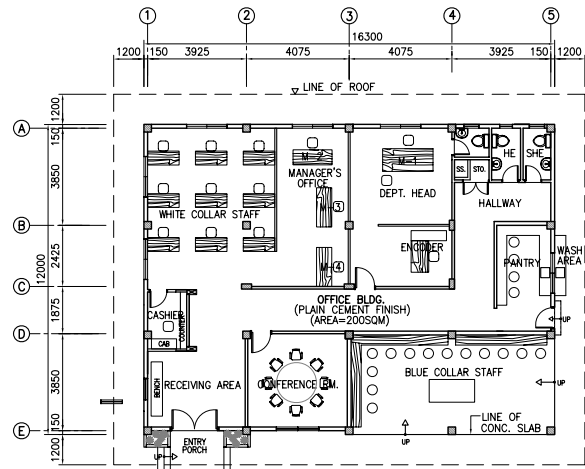


DETAIL - B
SCALE 1:30M

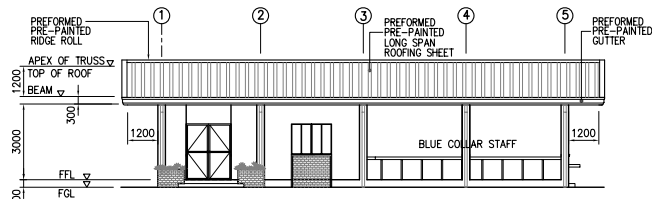


DRAINAGE PLAN OF PHASE III
SCALE 1:600M

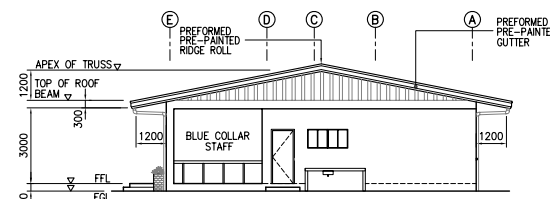
PROJECT TITLE:	CLIENT:	CONSULTANT:	DRAWING TITLE:	DESIGNED BY:	DRAWING CONTENT:	DRWG. NO.
THE MASTER PLAN ON SOLID WASTE MANAGEMENT FOR BORACAY ISLAND AND MALAY MUNICIPALITY	JAPAN INTERNATIONAL COOPERATION AGENCY	 NIPPON KOEI CO., LTD. 2, Kojimachi 4-chome, Chiyoda-ku Tokyo 102-0083 JAPAN Phone : +81-3-5276-3930 Fax : +81-3-5276-2656 E-mail : int.e@n-koei.co.jp http://www.n-koei.co.jp	DEVELOPMENT OF CENTRALIZED MATERIAL RECOVERY FACILITY IN BORACAY ISLAND	DRAWN BY: CHECKED BY: APPROVED BY: DATE: January 2008	DRAINAGE PLAN OF PHASE III	P-11 SET NO. 11 OF 26



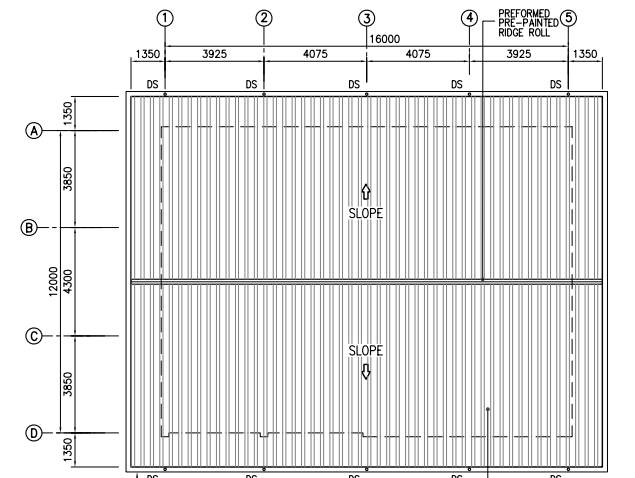
1 PLAN
SCALE 1:300M



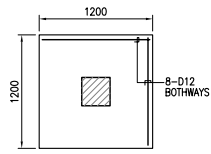
3 FRONT ELEVATION
SCALE 1:300M



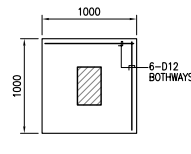
4 RIGHTSIDE ELEVATION
SCALE 1:300M



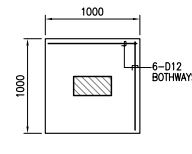
5 ROOF PLAN
SCALE 1:300M



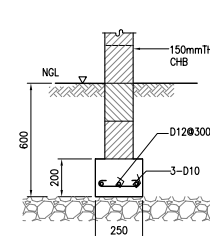
PLAN



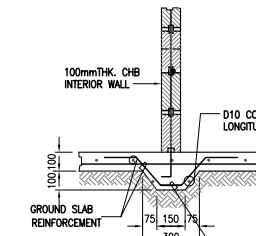
PLAN



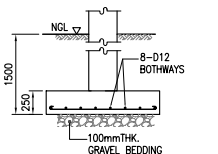
PLAN



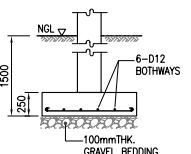
WALL FTG DETAIL WF1
SCALE 1:40M



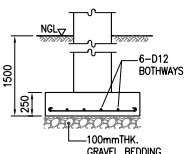
DETAIL OF INTERIOR CHB WALL ON THICKENED SLAB
SCALE 1:40M



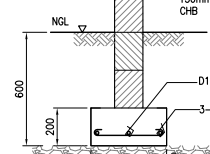
SECTION COLUMN FTG DETAIL F1
SCALE 1:80M



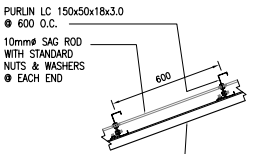
SECTION COLUMN FTG DETAIL F2
SCALE 1:80M



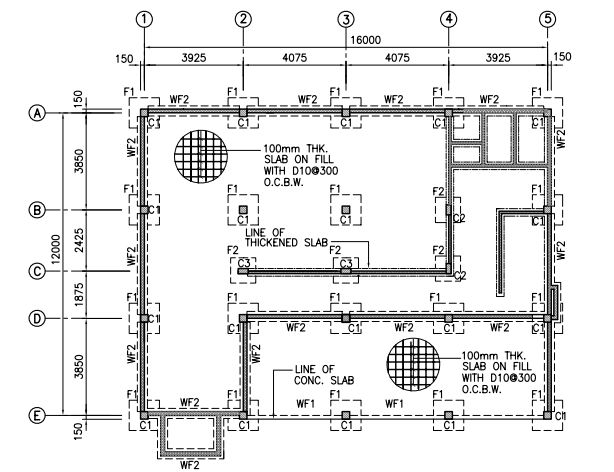
SECTION COLUMN FTG DETAIL F3
SCALE 1:80M



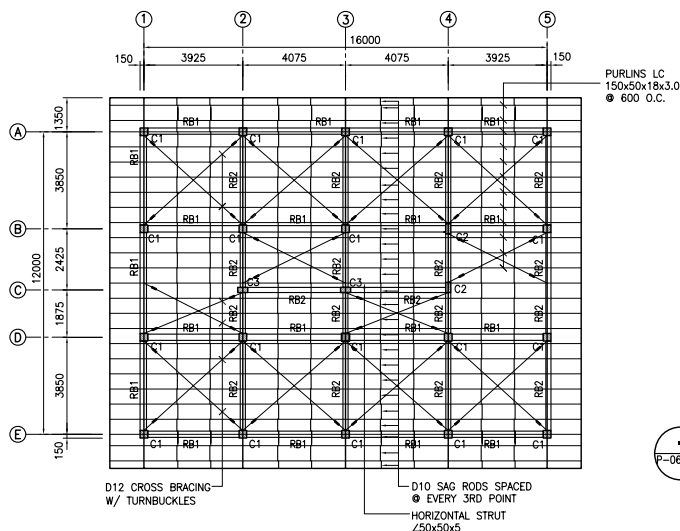
WALL FTG DETAIL WF2
SCALE 1:40M



TRUSS-PURLIN DETAIL
SCALE 1:40M



6 FOUNDATION PLAN
SCALE 1:300M



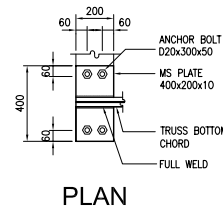
2 ROOF FRAMING PLAN
SCALE 1:300M

BEAM SCHEDULE

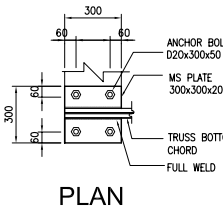
BEAM MARK	SIZE (mm)		TOP REINFORCEMENT			BOTTOM REINFORCEMENT			STIRRUPS (10mm#)
	B	H	LEFT	MID	RIGHT	LEFT	MID	RIGHT	
ROOF BEAMS									
RB1	250	300	3-D16	3-D16	3-D16	3-D16	3-D16	3-D16	2#50, 10#100, REST#150, 10#100, 2#50
RB2	200	300	4-D16	4-D16	4-D16	4-D16	4-D16	4-D16	2#50, 10#100, REST#150, 10#100, 2#50

COLUMN SCHEDULE

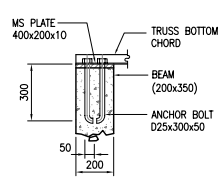
MARK	C1	C2	C3
LEVEL			
ROOF BEAM			
SIZE:	300 x 300	200 x 400	200 x 400
VERT. BARS:	12-D16	8-D16	8-D16
TIES:	D10-2#50, 10#100, REST #150, 10#100, 2#50	D10-2#50, 10#100, REST #150, 10#100, 2#50	D10-2#50, 10#100, REST #150, 10#100, 2#50



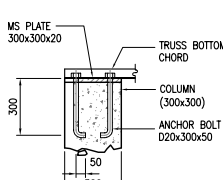
PLAN



PLAN



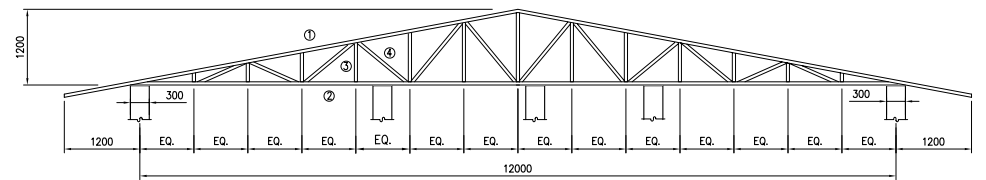
ELEVATION



ELEVATION

BASE PLATE DETAIL-1
SCALE 1:40M

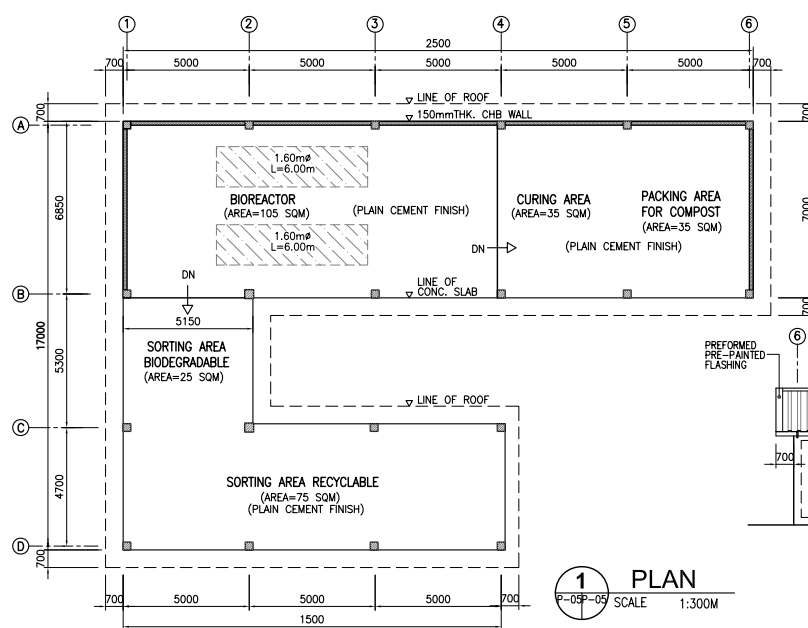
BASE PLATE DETAIL-2
SCALE 1:40M



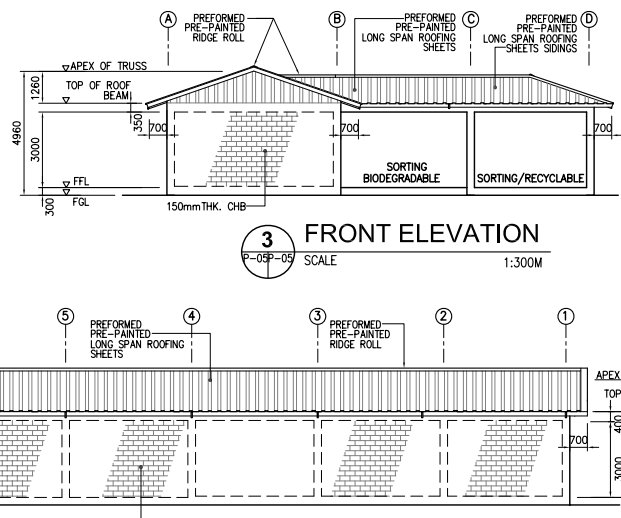
7 TRUSS DIAGRAM
SCALE 1:30M

TRUSS SCHEDULE

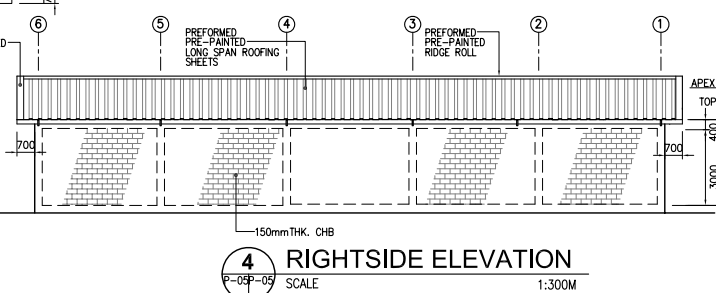
MEMBER	T1	T2	T3
① TOP CHORD	2 ∠ 50x50x3	2 ∠ 50x50x5	2 ∠ 50x50x3
② BOTTOM CHORD	2 ∠ 50x50x3	2 ∠ 50x50x5	2 ∠ 50x50x3
③ VERTICAL	∠ 50x50x5	∠ 50x50x3	∠ 50x50x5
④ DIAGONAL	∠ 50x50x5	∠ 50x50x3	∠ 50x50x6



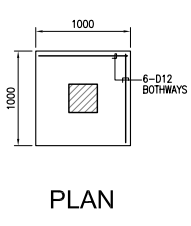
1 PLAN
SCALE 1:300M



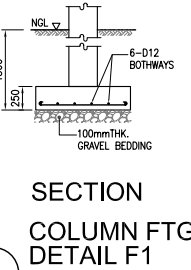
3 FRONT ELEVATION
SCALE 1:300M



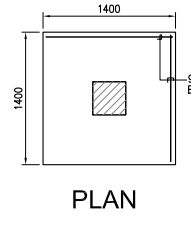
4 RIGHTSIDE ELEVATION
SCALE 1:300M



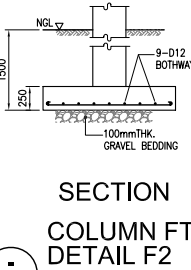
PLAN
SCALE 1:80M



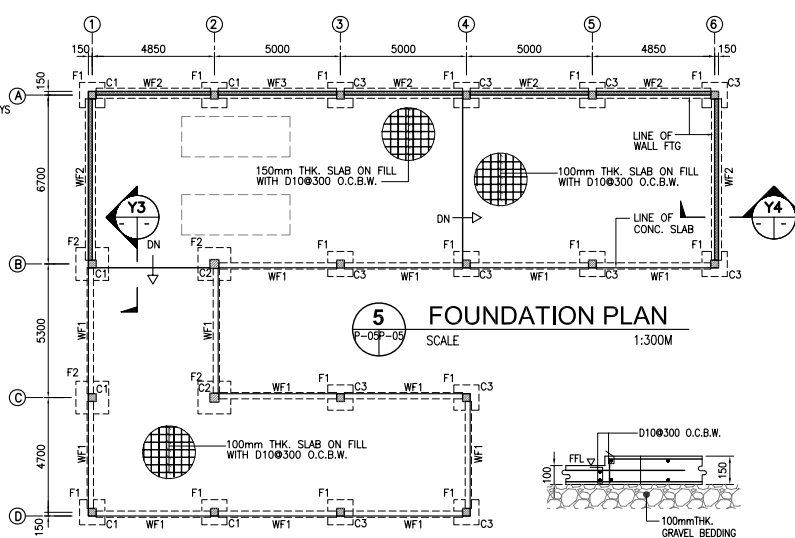
SECTION COLUMN FTG DETAIL F1
SCALE 1:80M



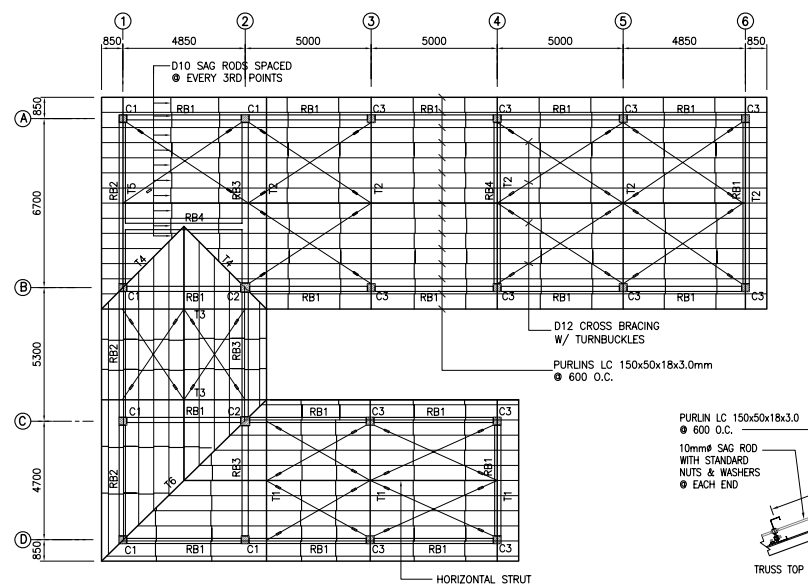
PLAN
SCALE 1:80M



SECTION COLUMN FTG DETAIL F2
SCALE 1:80M

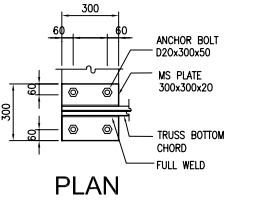


5 FOUNDATION PLAN
SCALE 1:300M

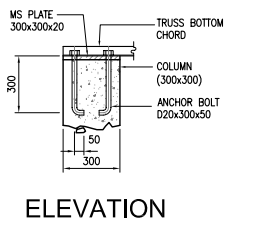


2 ROOF FRAMING PLAN
SCALE 1:300M

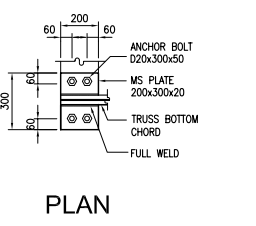
TRUSS-PURLIN DETAIL
SCALE 1:40M



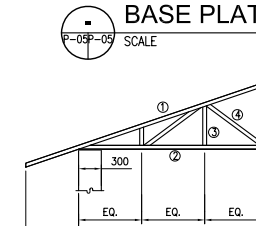
PLAN
SCALE 1:40M



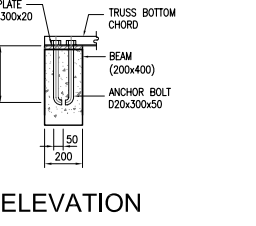
ELEVATION
SCALE 1:40M



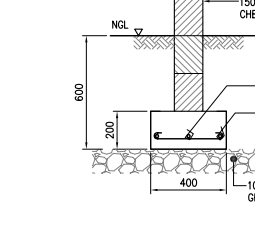
PLAN
SCALE 1:40M



ELEVATION
SCALE 1:40M

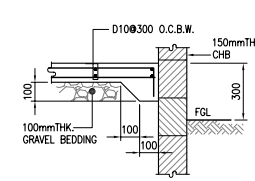


ELEVATION
SCALE 1:40M



ELEVATION
SCALE 1:40M

SECTION - Y3
SCALE 1:40M



SECTION - Y4
SCALE 1:40M

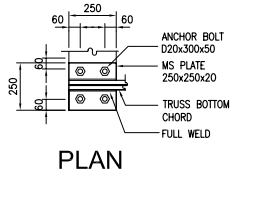


COLUMN SCHEDULE

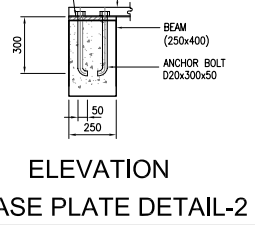
MARK	C1	C2	C3
LEVEL			
ROOF BEAM			
SIZE:	300 x 300	350 x 350	300 x 300
VERT. BARS:	12-D16	16-D16	8-D16
TIES:	D10-2@50, 10@100, REST @150, 10@100, 2@50	D10-2@50, 10@100, REST @150, 10@100, 2@50	D10-2@50, 10@100, REST @150, 10@100, 2@50

BEAM SCHEDULE

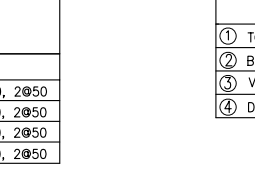
BEAM MARK	SIZE		TOP REINFORCEMENT			BOTTOM REINFORCEMENT			STIRRUPS (10mmφ)
	B	H	LEFT	MID	RIGHT	LEFT	MID	RIGHT	
ROOF BEAMS									
RB1	200	400	3-D16	3-D16	3-D16	3-D16	3-D16	3-D16	2@50, 15@100, REST@150, 15@100, 2@50
RB2	250	400	3-D16	3-D16	3-D16	3-D16	3-D16	3-D16	2@50, 10@100, REST@150, 10@100, 2@50
RB3	250	400	4-D16	4-D16	4-D16	4-D16	4-D16	4-D16	2@50, 10@100, REST@150, 10@100, 2@50
RB4	250	350	4-D16	4-D16	4-D16	4-D16	4-D16	4-D16	2@50, 10@100, REST@150, 10@100, 2@50



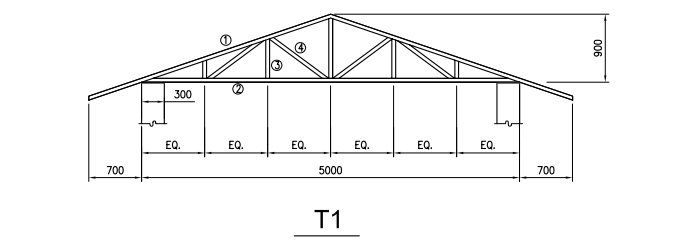
PLAN
SCALE 1:40M



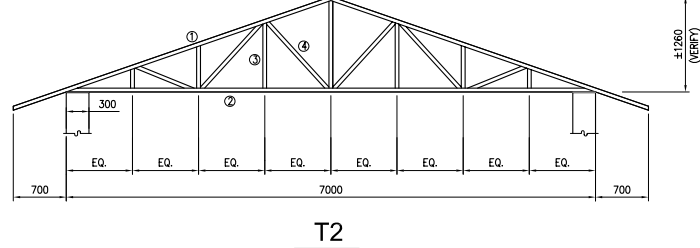
ELEVATION
SCALE 1:40M



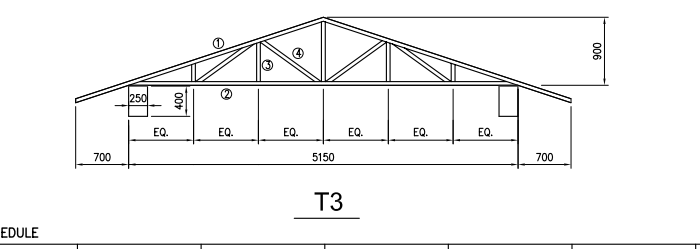
ELEVATION
SCALE 1:40M



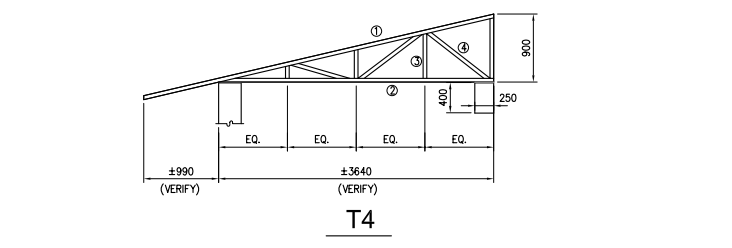
T1



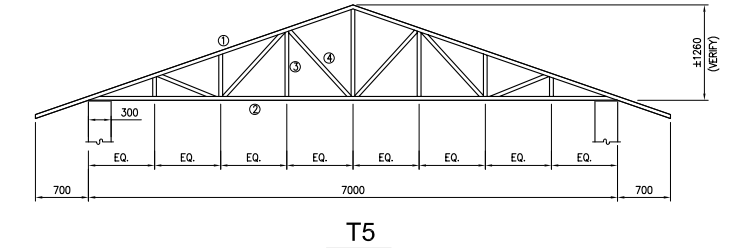
T2



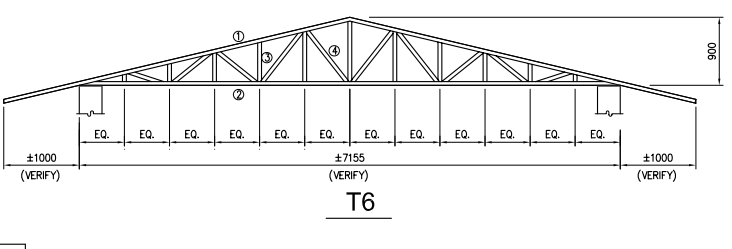
T3



T4



T5



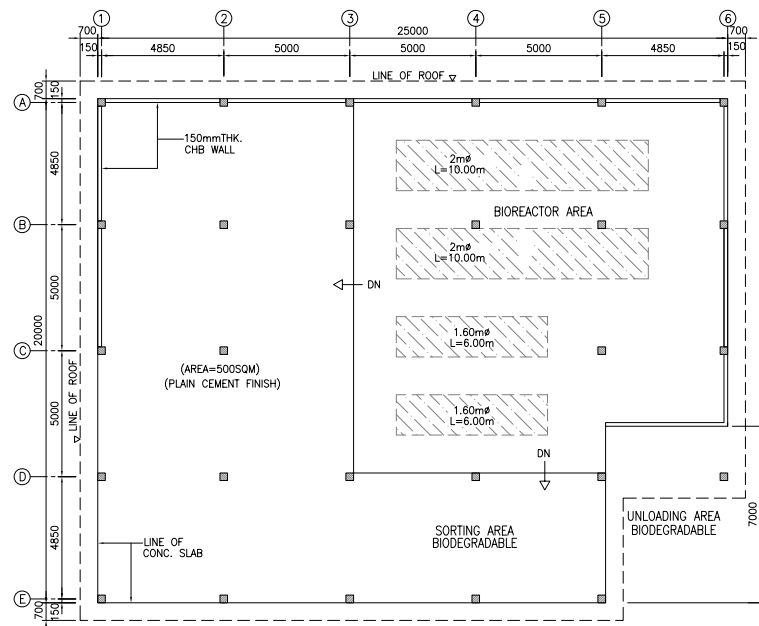
T6

TRUSS SCHEDULE

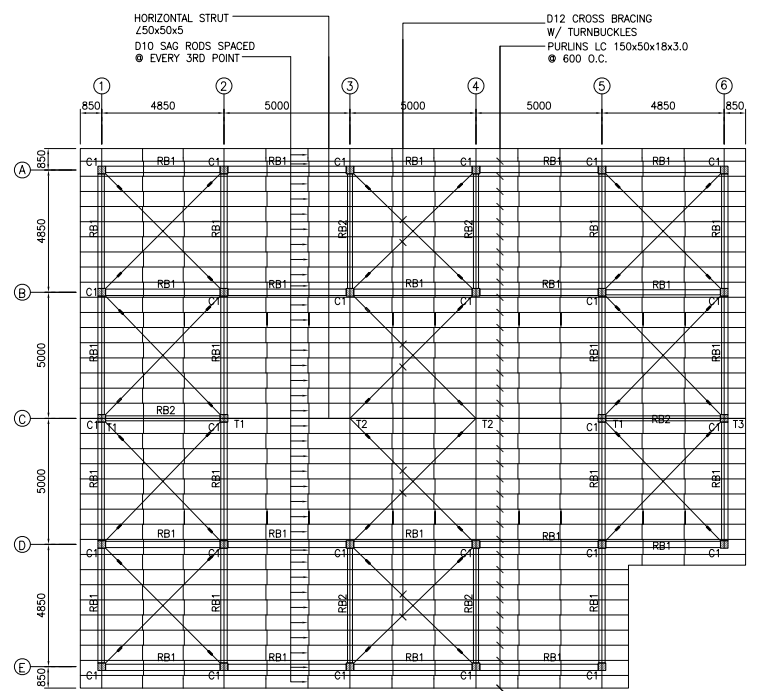
MEMBER	T1	T2	T3	T4	T5	T5
① TOP CHORD	2 ∠50x50x3	2 ∠50x50x3	2 ∠50x50x3	2 ∠50x50x5	2 ∠50x50x3	2 ∠50x50x6
② BOTTOM CHORD	2 ∠50x50x3	2 ∠50x50x3	2 ∠50x50x3	2 ∠50x50x3	2 ∠50x50x3	2 ∠50x50x3
③ VERTICAL	∠50x50x3	∠50x50x5	∠50x50x3	∠50x50x3	∠50x50x5	∠50x50x5
④ DIAGONAL	∠50x50x3	∠50x50x3	∠50x50x3	∠50x50x3	∠50x50x3	∠50x50x3

6 TRUSS DIAGRAM
SCALE 1:100M

PROJECT TITLE: THE MASTER PLAN ON SOLID WASTE MANAGEMENT FOR BORACAY ISLAND AND MALAY MUNICIPALITY	CLIENT: JAPAN INTERNATIONAL COOPERATION AGENCY	CONSULTANT: NIPPON KOEI CO., LTD. 2, Kojimachi 4-chome, Chiyoda-ku Tokyo 102-0083 JAPAN Phone : +81-3-5276-3930 Fax : +81-3-5276-2656 E-mail : int.e@n-koei.co.jp http://www.n-koei.co.jp	DRAWING TITLE: DEVELOPMENT OF CENTRALIZED MATERIAL RECOVERY FACILITY ON BORACAY ISLAND	DESIGNED BY: DRAWN BY: CHECKED BY: APPROVED BY: DATE: January 2008	DRAWING CONTENT: BIODEGRADABLE AND RECYCLABLE HANDLING AREA (PHASE I)	DRWG. NO. P-13 SET NO. 13 OF 26
---	---	--	---	--	--	--

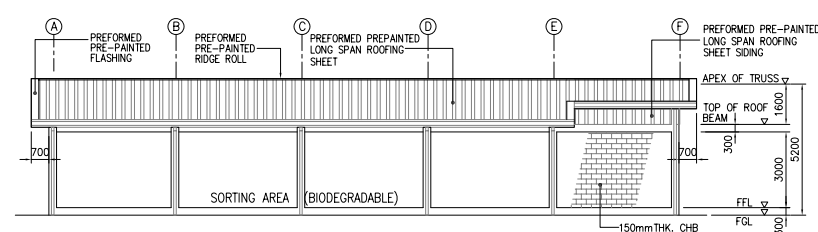


1 PLAN
SCALE 1:300M

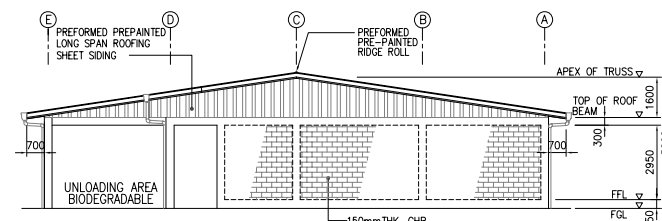


2 ROOF FRAMING PLAN
SCALE 1:300M

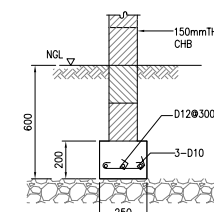
BEAM MARK	SIZE (mm)		TOP REINFORCEMENT			BOTTOM REINFORCEMENT			STIRRUPS (10mmφ)
	B	H	LEFT	MID	RIGHT	LEFT	MID	RIGHT	
ROOF BEAMS									
RB1	250	300	3-D16	3-D16	3-D16	3-D16	3-D16	3-D16	2φ50, 10φ100, REST@150, 10φ100, 2φ50
RB2	200	300	4-D16	4-D16	4-D16	4-D16	4-D16	4-D16	2φ50, 10φ100, REST@150, 10φ100, 2φ50



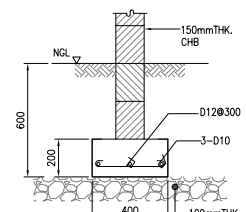
3 FRONT ELEVATION
SCALE 1:300M



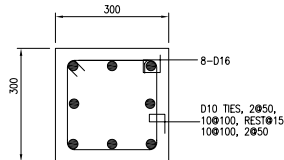
4 RIGHTSIDE ELEVATION
SCALE 1:300M



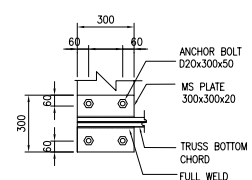
WALL FTG DETAIL WF1
SCALE 1:40M



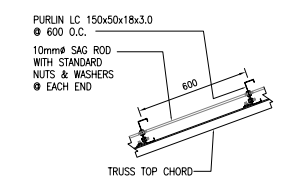
WALL FTG DETAIL WF2
SCALE 1:40M



5 COLUMN DETAIL C1
SCALE 1:20M

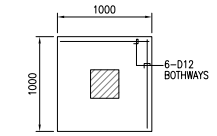


BASE PLATE DETAIL
SCALE 1:40M

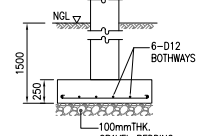


TRUSS-PURLIN DETAIL
SCALE 1:40M

MEMBER	TRUSS SCHEDULE		
	T1	T2	T3
① TOP CHORD	2 ∠ 50x50x3	2 ∠ 50x50x5	2 ∠ 50x50x3
② BOTTOM CHORD	2 ∠ 50x50x3	2 ∠ 50x50x5	2 ∠ 50x50x3
③ VERTICAL	∠ 50x50x5	2 ∠ 50x50x3	∠ 50x50x5
④ DIAGONAL	∠ 50x50x5	2 ∠ 50x50x3	∠ 50x50x6

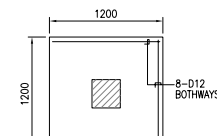


PLAN

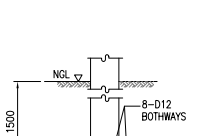


SECTION

COLUMN FTG DETAIL F1
SCALE 1:80M

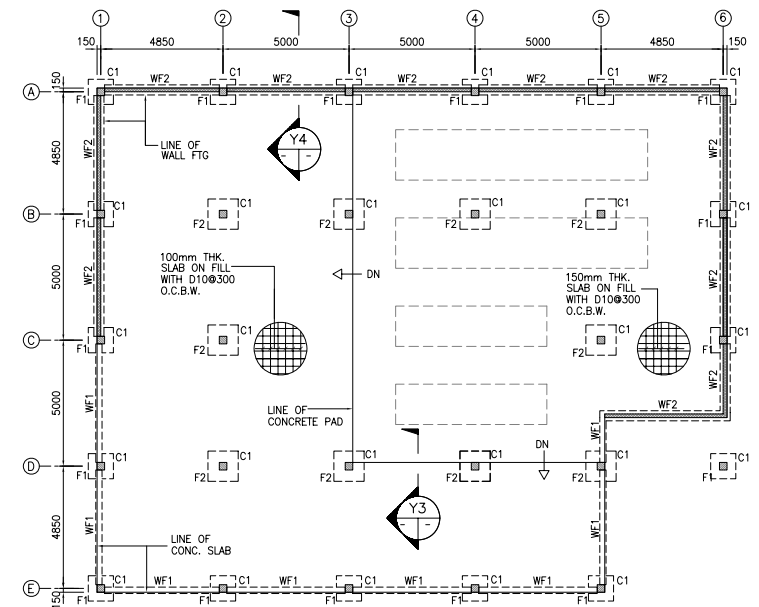


PLAN

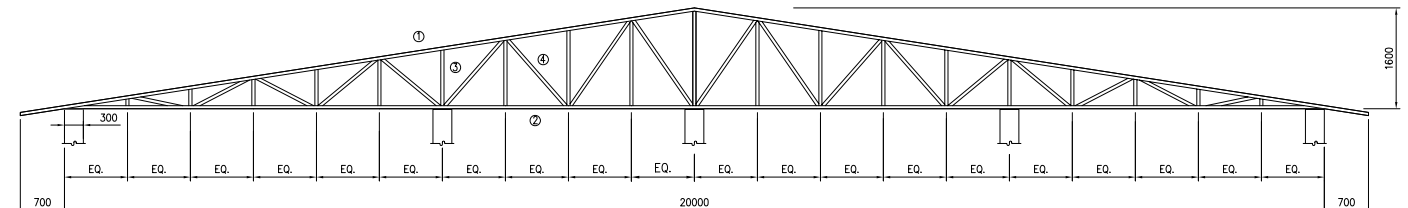


SECTION

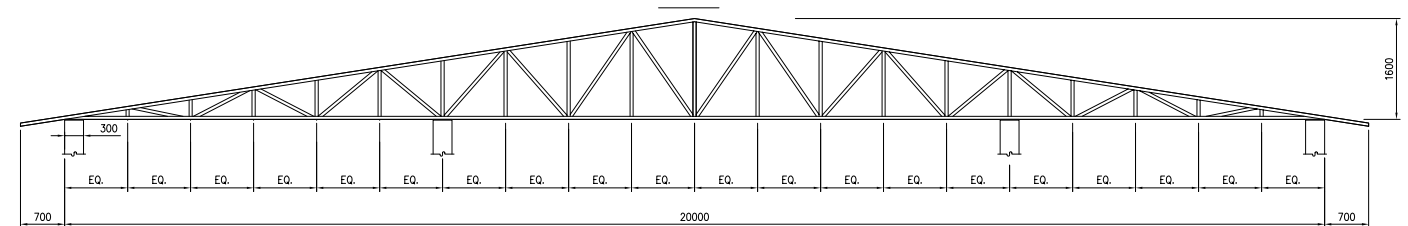
COLUMN FTG DETAIL F2
SCALE 1:80M



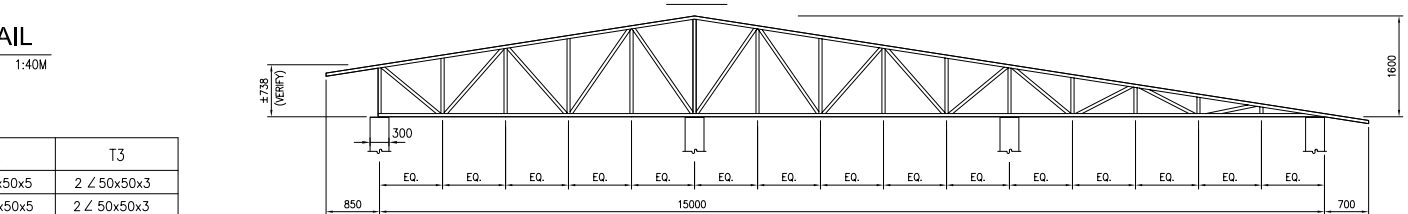
6 FOUNDATION PLAN
SCALE 1:300M



T1



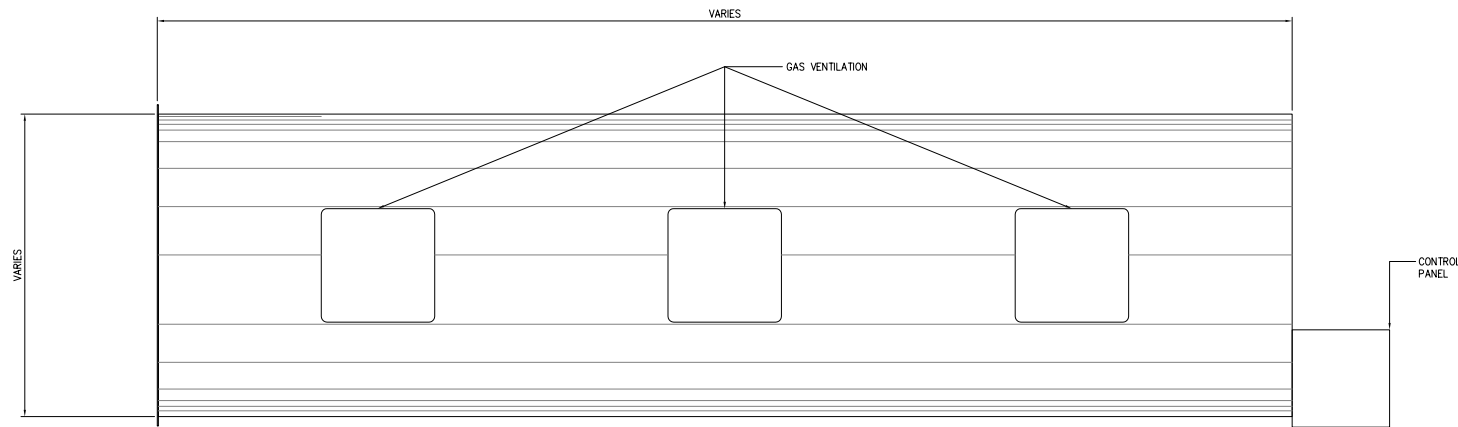
T2



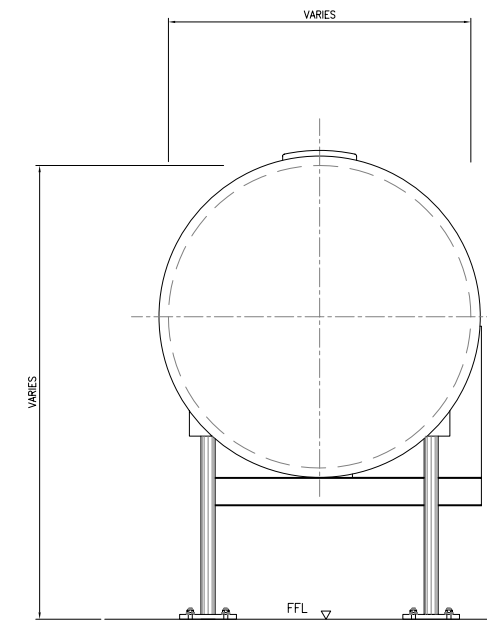
T3

7 TRUSS DIAGRAM
SCALE 1:300M

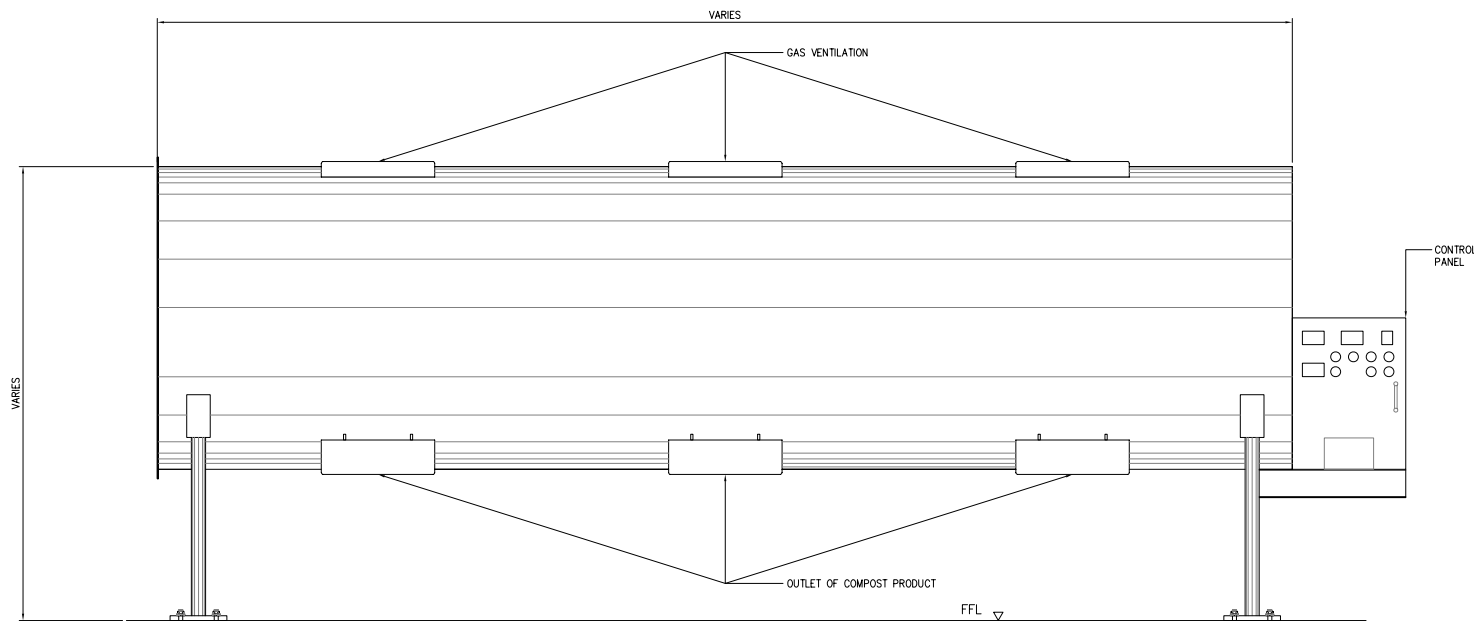
PROJECT TITLE:	CLIENT:	CONSULTANT:	DRAWING TITLE:	DESIGNED BY:	DRAWING CONTENT:	DRWG. NO.
THE MASTER PLAN ON SOLID WASTE MANAGEMENT FOR BORACAY ISLAND AND MALAY MUNICIPALITY	JAPAN INTERNATIONAL COOPERATION AGENCY	NIPPON KOEI CO., LTD. 2, Kojimachi 4-chome, Chiyoda-ku Tokyo 102-0083 JAPAN Phone : +81-3-5276-3930 Fax : +81-3-5276-2656 E-mail : int.e@n-koei.co.jp http://www.n-koei.co.jp	DEVELOPMENT OF CENTRALIZED MATERIAL RECOVERY FACILITY ON BORACAY ISLAND	DRAWN BY:	BIODEGRADABLE HANDLING AREA (PHASE II, III)	P-14
				CHECKED BY:		SET NO.
				APPROVED BY:		14 OF 26
				DATE:	January 2008	



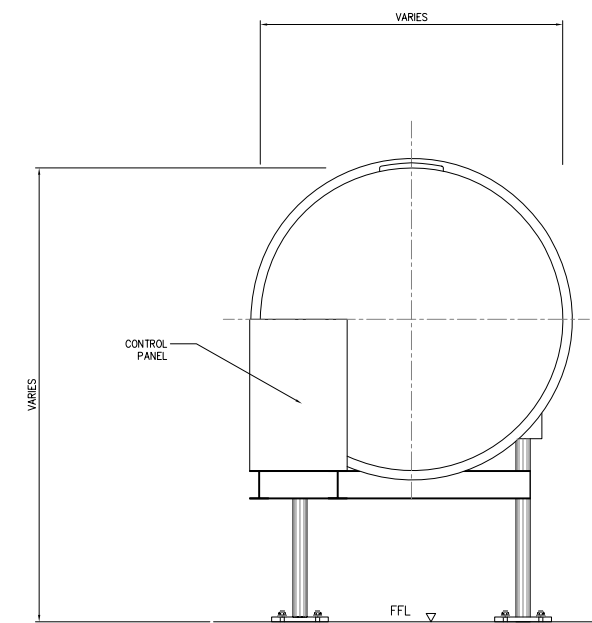
PLAN



LEFTRSIDE ELEVATION




SIDE ELEVATION



RIGHTSIDE ELEVATION

DETAIL OF BIOREACTOR
SCALE 1:20M

PROJECT TITLE:	CLIENT:	CONSULTANT:	DRAWING TITLE:	DESIGNED BY:	DRAWING CONTENT:	DRWG. NO.
THE MASTER PLAN ON SOLID WASTE MANAGEMENT FOR BORACAY ISLAND AND MALAY MUNICIPALITY	JAPAN INTERNATIONAL COOPERATION AGENCY	 NIPPON KOEI CO., LTD. 2, Kojimachi 4-chome, Chiyoda-ku Tokyo 102-0083 JAPAN Phone : +81-3-5276-3930 Fax : +81-3-5276-2656 E-mail : int.e@nx.n-koei.co.jp http://www.n-koei.co.jp	DEVELOPMENT OF CENTRALIZED MATERIAL RECOVERY FACILITY ON BORACAY ISLAND	DRAWN BY: CHECKED BY: APPROVED BY: DATE: January 2008	DETAIL OF BIOREACTOR	P-15 SET NO. 15 OF 26