

**PART II : DRAWINGS OF REHABILITATION OF OLD DUMP SITE
ON BORACAY ISLAND**

REHABILITATION OF OLD DUMPSITE ON BORACAY ISLAND

BRGY. BALABAG, MALAY
PROVINCE OF AKLAN

DRAWINGS

Malay, Boracay Island 2008

PREPARED BY :




NIPPON KOEI CO., LTD.

2. Kojimachi 4-chome, Chiyoda-ku
Tokyo 102-0083 JAPAN
Phone : +81-3-5276-3930 Fax : +81-3-5276-2656
E-mail : int.e@gx.n-koei.co.jp
<http://www.n-koei.co.jp>

LIST OF DRAWINGS

DESCRIPTION :	SET NO.	DWRG. NO.
TOPOGRAPHIC MAP OF OLD DUMP SITE -----	1 OF 13 -----	O - 01
INFERRED CONTOURS ON THE BASE OF THE WASTE (TOP OF THE LIMESTONE BEDROCK)-----	2 OF 13 -----	O - 02
CROSS SECTIONS USED IN VOLUME CALCULATION -----	3 OF 13 -----	O - 03
CROSS SECTIONS @ LINE 1A-1B & 2A-2B -----	4 OF 13 -----	O - 04
CROSS SECTIONS @ LINE 3A-3B & 4A-4B -----	5 OF 13 -----	O - 05
CROSS SECTIONS @ LINE 5A-5B -----	6 OF 13 -----	O - 06
CROSS SECTIONS @ LINE A1-A2 & B1-B2 -----	7 OF 13 -----	O - 07
CROSS SECTIONS @ LINE C1-C2 & D1-D2 -----	8 OF 13 -----	O - 08
CROSS SECTIONS @ LINE E1-E2-----	9 OF 13 -----	O - 09
PLAN AND SECTIONS OF OPTION 1 -----	10 OF 13 -----	O - 10
PLAN AND SECTIONS OF OPTION 2 -----	11 OF 13 -----	O - 11
PLAN AND SECTIONS OF OPTION 3 -----	12 OF 13 -----	O - 12
PLAN AND SECTIONS OF OPTION 4 -----	13 OF 13 -----	O - 13

PROJECT TITLE:	CLIENT:	CONSULTANT:	DRAWING TITLE:	DESIGNED BY:	DRAWING CONTENT:
THE MASTER PLAN ON SOLID WASTE MANAGEMENT FOR BORACAY ISLAND AND MALAY MUNICIPALITY	JAPAN INTERNATIONAL COOPERATION AGENCY	 NIPPON KOEI CO., LTD. 2, Kojimachi 4-chome, Chiyoda-ku Tokyo 102-0083 JAPAN Phone : +81-3-5276-3930 Fax : +81-3-5276-2656 E-mail : int.a@nx.n-koei.co.jp http://www.n-koei.co.jp	REHABILITATION OF OLD DUMPSITE ON BORACAY ISLAND BRGY, BALABAG, MALAY PROVINCE OF AKLAN	DRAWN BY: CHECKED BY: APPROVED BY: DATE: January 2008	LIST OF DRAWINGS

PHILIPPINE REFERENCE SYSTEM 1992

HORIZONTAL DATUM: GPS STATION AKN-17 AND AKN-20, ESTABLISHED BY NAMRIA
BRGY.POBLACION, BURUANGA, AKLAN AND BRGY. PINATUAD, NABAS, AKLAN

VERTICAL DATUM: MEAN SEA LEVEL
BENCH MARK AK-B-2 ,BRGY.POBLACION, NABAS, AKLAN
COAST AND GEODETIC SURVEY 1959

GROUND WATER WELL

GW-01	N 1324902.940	E 383198.140	ELEV.=57.65 M.
GW-02	N 1324903.880	E 383318.100	ELEV.=32.12 M.

CONTROL POINTS

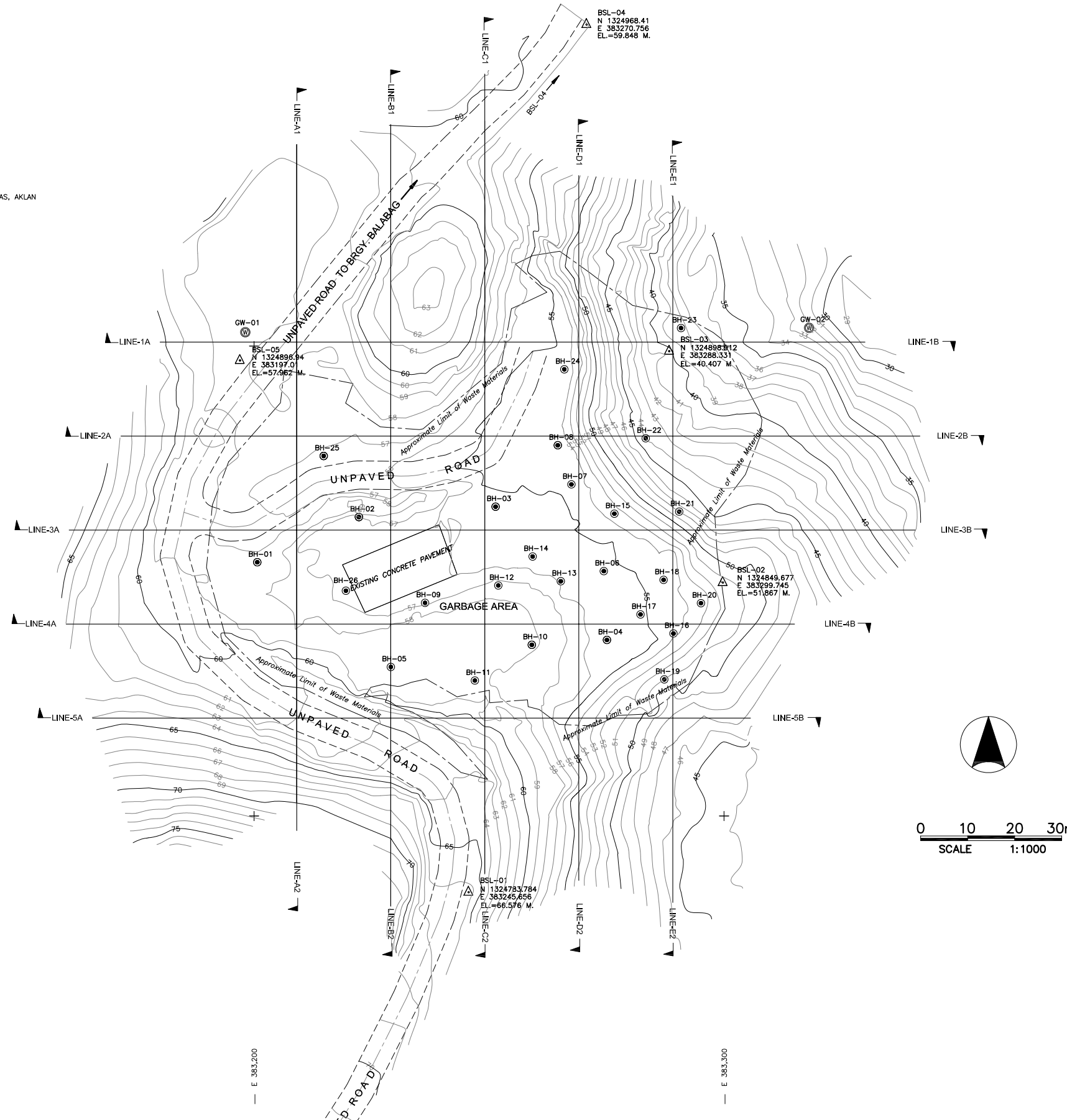
BSL-01	N 1324783.784	E 383245.656	ELEV.=66.576 M.
BSL-02	N 1324849.677	E 383299.745	ELEV.=51.867 M.
BSL-03	N 1324898.912	E 383288.331	ELEV.=40.407 M.
BSL-04	N 1324968.410	E 383270.756	ELEV.=59.848 M.
BSL-05	N 1324896.940	E 383197.010	ELEV.=57.962 M.

BOREHOLES

BH-1	N=1324854.00	E=383200.69	ELEV.=58.27 M.
BH-2	N=1324863.62	E=383222.31	ELEV.=57.00 M.
BH-3	N=1324865.82	E=383251.39	ELEV.=55.25 M.
BH-4	N=1324837.47	E=383275.08	ELEV.=55.50 M.
BH-5	N=1324831.72	E=383229.01	ELEV.=58.47 M.
BH-6	N=1324852.11	E=383274.41	ELEV.=55.55 M.
BH-7	N=1324870.57	E=383267.52	ELEV.=54.50 M.
BH-8	N=1324878.89	E=383264.62	ELEV.=54.20 M.
BH-9	N=1324845.36	E=383236.38	ELEV.=56.92 M.
BH-10	N=1324836.43	E=383259.09	ELEV.=58.17 M.
BH-11	N=1324828.83	E=383246.98	ELEV.=58.40 M.
BH-12	N=1324849.06	E=383251.96	ELEV.=57.32 M.
BH-13	N=1324849.96	E=383265.26	ELEV.=55.97 M.
BH-14	N=1324855.22	E=383259.27	ELEV.=55.78 M.
BH-15	N=1324864.33	E=383276.66	ELEV.=53.50 M.
BH-16	N=1324838.84	E=383289.23	ELEV.=54.17 M.
BH-17	N=1324842.89	E=383282.22	ELEV.=55.12 M.
BH-18	N=1324850.25	E=383287.13	ELEV.=55.47 M.
BH-19	N=1324829.07	E=383287.28	ELEV.=51.00 M.
BH-20	N=1324845.29	E=383295.08	ELEV.=53.50 M.
BH-21	N=1324864.77	E=383290.45	ELEV.=48.02 M.
BH-22	N=1324880.37	E=383283.33	ELEV.=44.00 M.
BH-23	N=1324903.83	E=383290.84	ELEV.=38.17 M.
BH-24	N=1324895.05	E=383266.01	ELEV.=54.50 M.
BH-25	N=1324876.61	E=383214.81	ELEV.=56.87 M.
BH-26	N=1324847.94	E=383219.54	ELEV.=56.92 M.

LEGEND :

- MAJOR CONTOUR
- MINOR CONTOUR
- BM/GPS STATION
- BORE HOLE
- GROUND WATER WELL



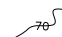




PROJECT TITLE:	CLIENT:	CONSULTANT:	SUB COMPONENT:	DESIGNED BY:	DRAWING TITLE:	DRWG. NO.
THE MASTER PLAN ON SOLID WASTE MANAGEMENT FOR BORACAY ISLAND AND MALAY MUNICIPALITY	JAPAN INTERNATIONAL COOPERATION AGENCY	<p>NIPPON KOEI CO., LTD. 2, Kojimachi 4-chome, Chiyoda-ku Tokyo 102-0083 JAPAN Phone : +81-3-5276-3930 Fax : +81-3-5276-2656 E-mail : int.e@nx.n-koei.co.jp http://www.n-koei.co.jp</p>	REHABILITATION OF OLD DUMPSITE ON BORACAY ISLAND BRGY. BALABAG, MALAY PROVINCE OF AKLAN	DRAWN BY:	TOPOGRAPHIC MAP OF OLD DUMPSITE	O-01
				CHECKED BY:		
				APPROVED BY:		
				DATE: January 2008		
						SET NO. 1 OF 12

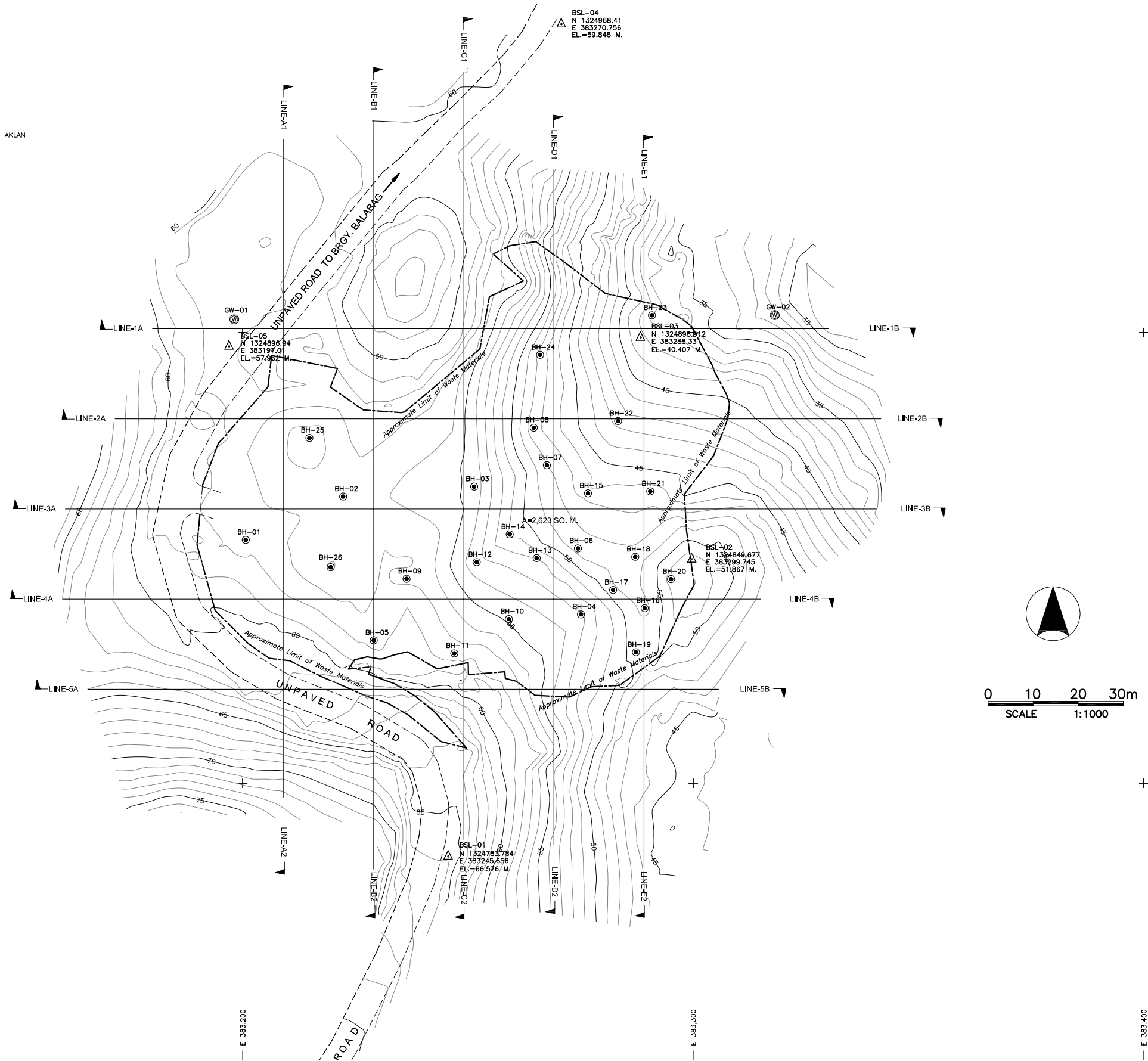
PHILIPPINE REFERENCE SYSTEM 1992


HORIZONTAL DATUM: GPS STATION AKN-17 AND AKN-20, ESTABLISHED BY NAMRIA
BRGY.POBLACION, BURIANGA, AKLAN AND BRGY. PINATUAD, NABAS, AKLAN

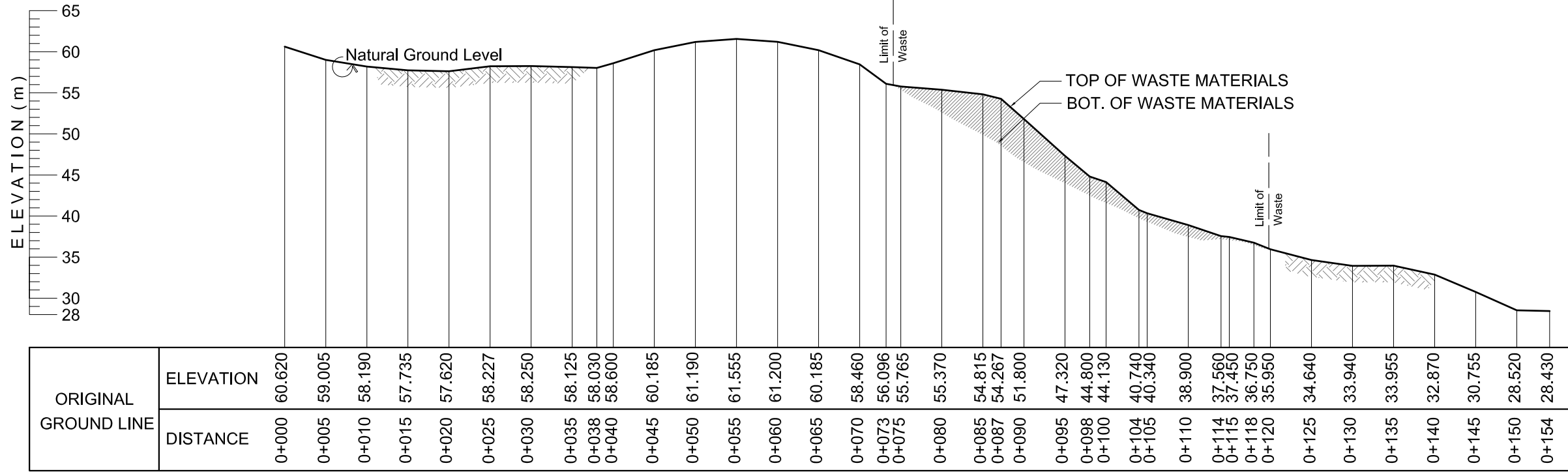
VERTICAL DATUM: MEAN SEA LEVEL
BENCH MARK AK-B-2 ,BRGY.POBLACION, NABAS, AKLAN
COAST AND GEODETIC SURVEY 1959

LEGEND :

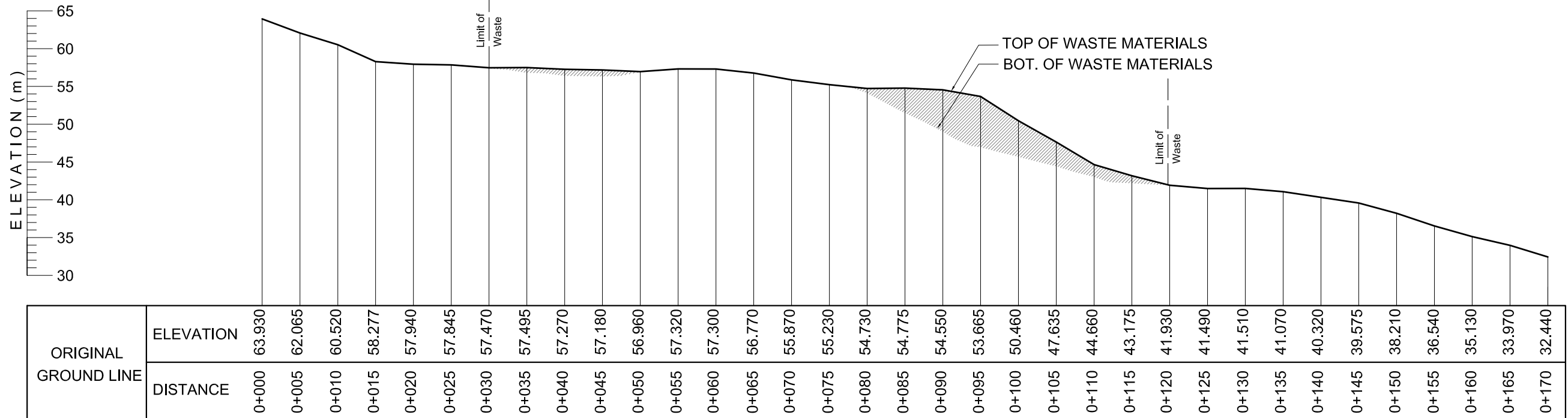
-  - MAJOR CONTOUR
-  - MINOR CONTOUR
-  - BM/GPS STATION
-  - BORE HOLE
-  - GROUND WATER WELL




PROJECT TITLE:	CLIENT:	CONSULTANT:	SUB COMPONENT:	DESIGNED BY:	DRAWING TITLE:	DRWG. NO.
THE MASTER PLAN ON SOLID WASTE MANAGEMENT FOR BORACAY ISLAND AND MALAY MUNICIPALITY	JAPAN INTERNATIONAL COOPERATION AGENCY	 NIPPON KOEI CO., LTD. 2, Kojimachi 4-chome, Chiyoda-ku Tokyo 102-0083 JAPAN Phone : +81-3-5276-3930 Fax : +81-3-5276-2656 E-mail : int.e@nx.n-koei.co.jp http://www.n-koei.co.jp	REHABILITATION OF OLD DUMPSITE ON BORACAY ISLAND BRGY. BALABAG, MALAY PROVINCE OF AKLAN	DRAWN BY:	INFERRED CONTOURS ON THE BASE OF THE WASTE (TOP OF THE LIMESTONE BEDROCK)	O-02
				CHECKED BY:		
				APPROVED BY:		
				DATE: January 2008		
						SET NO. 2 OF 12

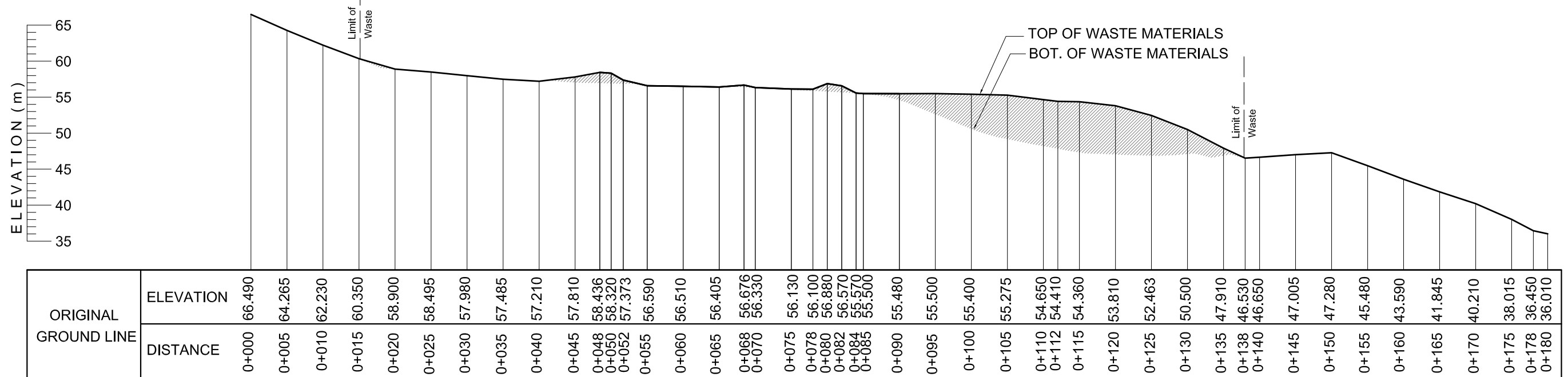


CROSS SECTION @ LINE 1A - 1B
SCALE: 1:600 M.

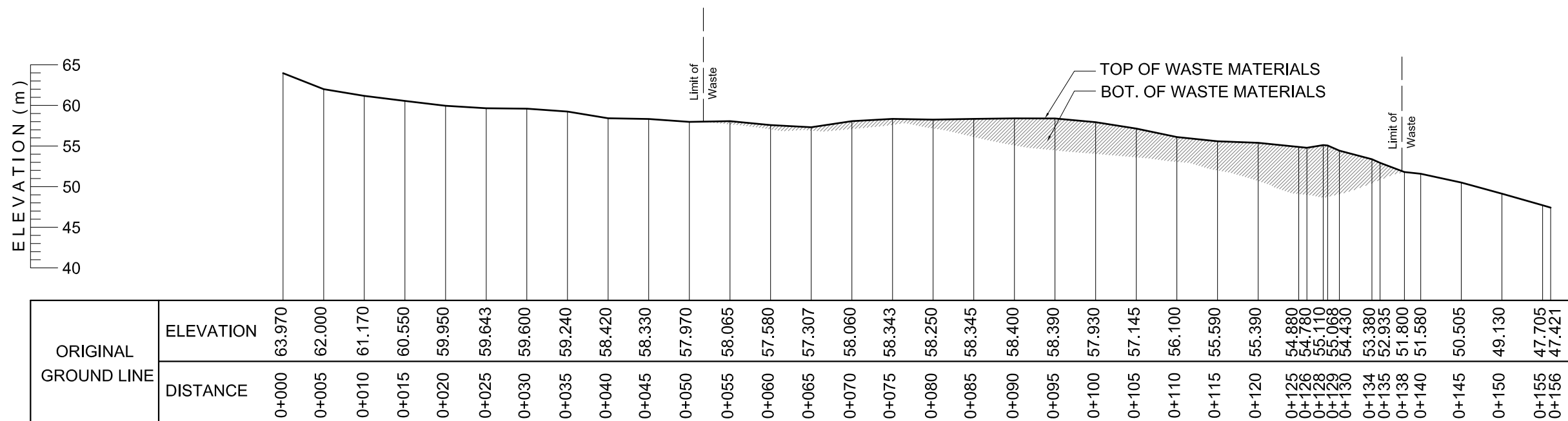


CROSS SECTION @ LINE 2A-2B
SCALE: 1:600 M.

PROJECT TITLE:	CLIENT:	CONSULTANT:	SUB COMPONENT:	DESIGNED BY:	DRAWING TITLE:	DRWG. NO.
THE MASTER PLAN ON SOLID WASTE MANAGEMENT FOR BORACAY ISLAND AND MALAY MUNICIPALITY	JAPAN INTERNATIONAL COOPERATION AGENCY	 NIPPON KOEI CO., LTD. 2, Kojimachi 4-chome, Chiyoda-ku Tokyo 102-0083 JAPAN Phone : +81-3-5276-3930 Fax : +81-3-5276-2656 E-mail : int.a@gx.n-koei.co.jp http://www.n-koei.co.jp	REHABILITATION OF OLD DUMPSITE ON BORACAY ISLAND BRGY. BALABAG, MALAY PROVINCE OF AKLAN	DRAWN BY: CHECKED BY: APPROVED BY: DATE: January 2008	CROSS SECTIONS @ LINE 1A-1B & 2A-2B	O-03 SET NO. 3 OF 12




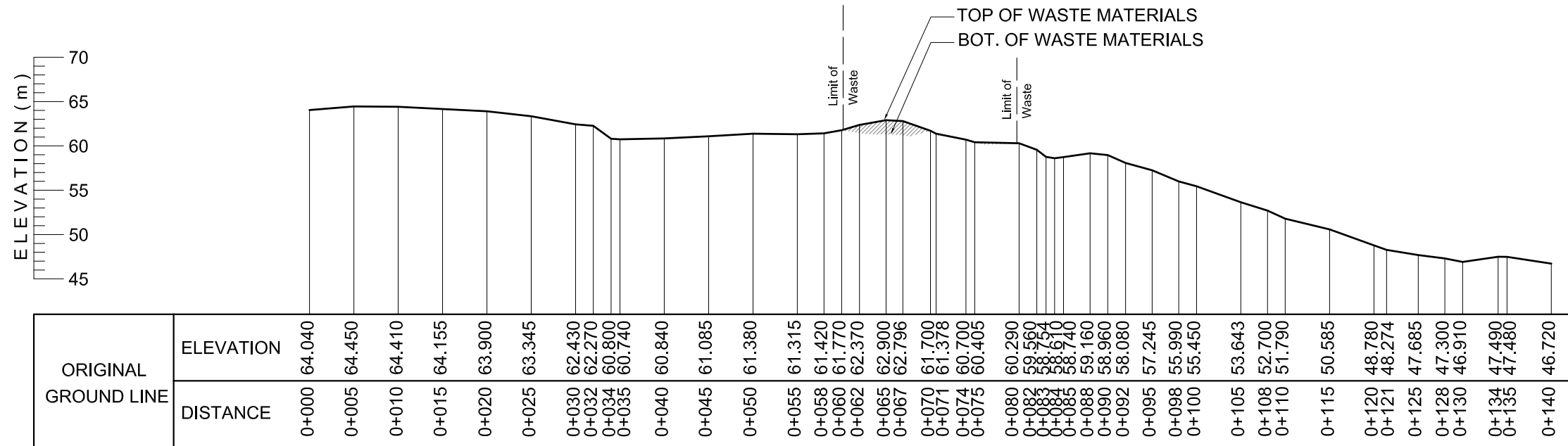
CROSS SECTION @ LINE 3A-3B



CROSS SECTION @ LINE 4A-4B



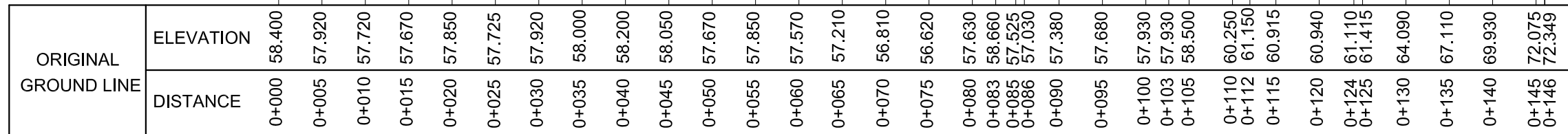
PROJECT TITLE:	CLIENT:	CONSULTANT:	SUB COMPONENT:	DESIGNED BY:	DRAWING TITLE:	DRWG. NO.
THE MASTER PLAN ON SOLID WASTE MANAGEMENT FOR BORACAY ISLAND AND MALAY MUNICIPALITY	JAPAN INTERNATIONAL COOPERATION AGENCY	 NIPPON KOEI CO., LTD. 2, Kojimachi 4-chome, Chiyoda-ku Tokyo 102-0083 JAPAN Phone : +81-3-5276-3930 Fax : +81-3-5276-2656 E-mail : int.a@nx.n-koei.co.jp http://www.n-koei.co.jp	REHABILITATION OF OLD DUMPSITE ON BORACAY ISLAND BRGY. BALABAG, MALAY PROVINCE OF AKLAN	DRAWN BY: CHECKED BY: APPROVED BY: DATE: January 2008	CROSS SECTIONS @ LINE 3A-3B & 4A-4B	O-04 SET NO. 4 OF 12



CROSS SECTION @ LINE 5A-5B
 SCALE: 1:600 M.

PROJECT TITLE:	CLIENT:	CONSULTANT:	SUB COMPONENT:	DESIGNED BY:	DRAWING TITLE:	DRWG. NO.
THE MASTER PLAN ON SOLID WASTE MANAGEMENT FOR BORACAY ISLAND AND MALAY MUNICIPALITY	JAPAN INTERNATIONAL COOPERATION AGENCY	NIPPON KOEI CO., LTD. <small>2, Kojimachi 4-chome, Chiyoda-ku Tokyo 102-0083 JAPAN Phone : +81-3-5276-3930 Fax : +81-3-5276-2656 E-mail : int.a@nx.n-koei.co.jp http://www.n-koei.co.jp.</small>	REHABILITATION OF OLD DUMPSITE ON BORACAY ISLAND BRGY. BALABAG, MALAY PROVINCE OF AKLAN	DRAWN BY:	CROSS SECTIONS @ LINE 5A-5B	O-05
				CHECKED BY:		
				APPROVED BY:		
				DATE: January 2008		
						SET NO. 5 OF 12

ELEVATION (m)



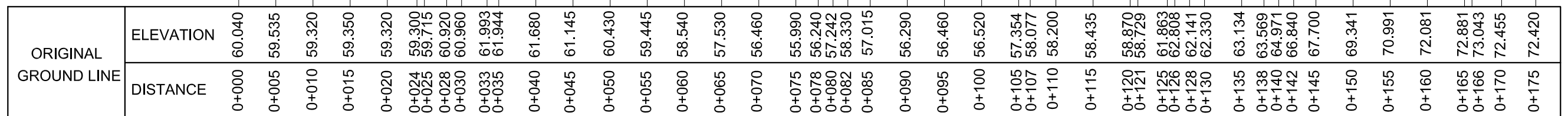
CROSS SECTION @ LINE A1-A2



SCALE:

1:600 M.

ELEVATION (m)




CROSS SECTION @ LINE B1-B2



SCALE:

1:600 M.

PROJECT TITLE:	CLIENT:	CONSULTANT:	SUB COMPONENT:	DESIGNED BY:	DRAWING TITLE:	DRWG. NO.
THE MASTER PLAN ON SOLID WASTE MANAGEMENT FOR BORACAY ISLAND AND MALAY MUNICIPALITY	JAPAN INTERNATIONAL COOPERATION AGENCY	 NIPPON KOEI CO., LTD. 2, Kojimachi 4-chome, Chiyoda-ku Tokyo 102-0083 JAPAN Phone : +81-3-5276-3930 Fax : +81-3-5276-2656 E-mail : int.a@nx.n-koei.co.jp http://www.n-koei.co.jp	REHABILITATION OF OLD DUMPSITE ON BORACAY ISLAND BRGY. BALABAG, MALAY PROVINCE OF AKLAN	DRAWN BY: CHECKED BY: APPROVED BY: DATE: January 2008	CROSS SECTIONS @ LINE A1-A2 & B1-B2	O-06 SET NO. 6 OF 12