
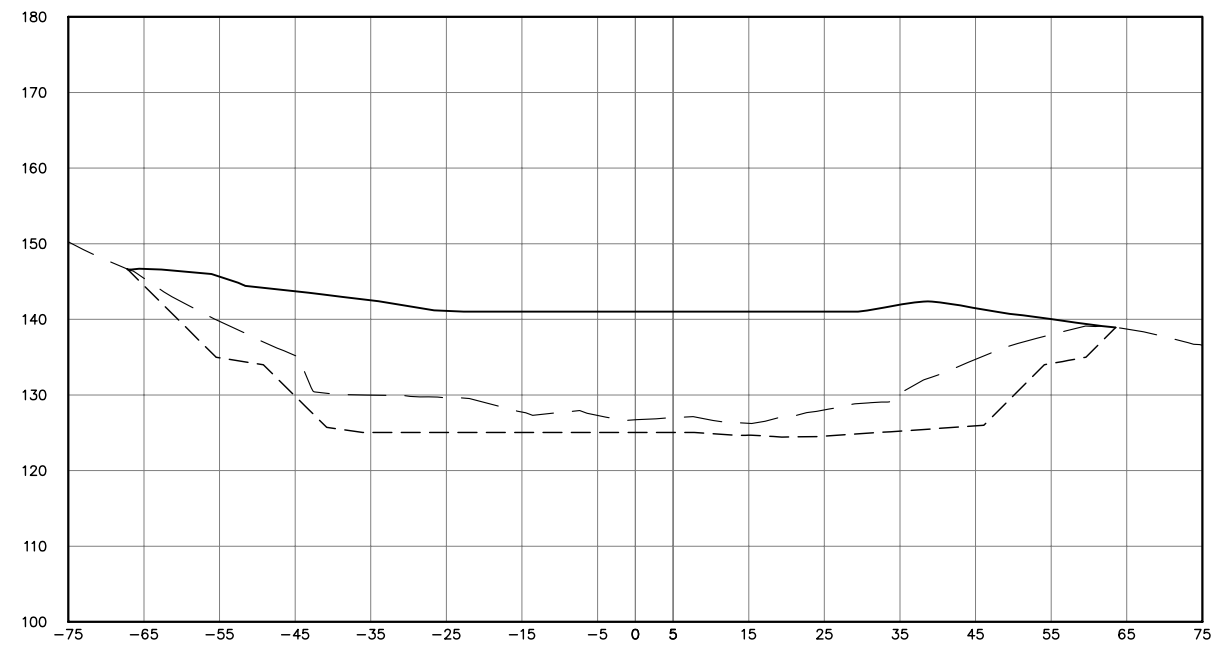


PROJECT TITLE:	CLIENT:	CONSULTANT:	DRAWING TITLE:	DESIGNED BY:	DRAWING CONTENT:	DRWG. NO.
THE MASTER PLAN ON SOLID WASTE MANAGEMENT FOR BORACAY ISLAND AND MALAY MUNICIPALITY	JAPAN INTERNATIONAL COOPERATION AGENCY	 <p><b>NIPPON KOEI CO., LTD.</b>          2, Kojimachi 4-chome, Chiyoda-ku          Tokyo 102-0083 JAPAN          Phone : +81-3-5276-3930 Fax : +81-3-5276-2656          E-mail : int.a@nx.n-koei.co.jp          http://www.n-koei.co.jp</p>	DEVELOPMENT OF NEW LANDFILL SITE IN MALAY MUNICIPALITY	DRAWN BY: CHECKED BY: APPROVED BY: DATE: January 2008	LINES OF CROSS SECTIONS	<b>K-10</b> SET NO. 10 OF 21

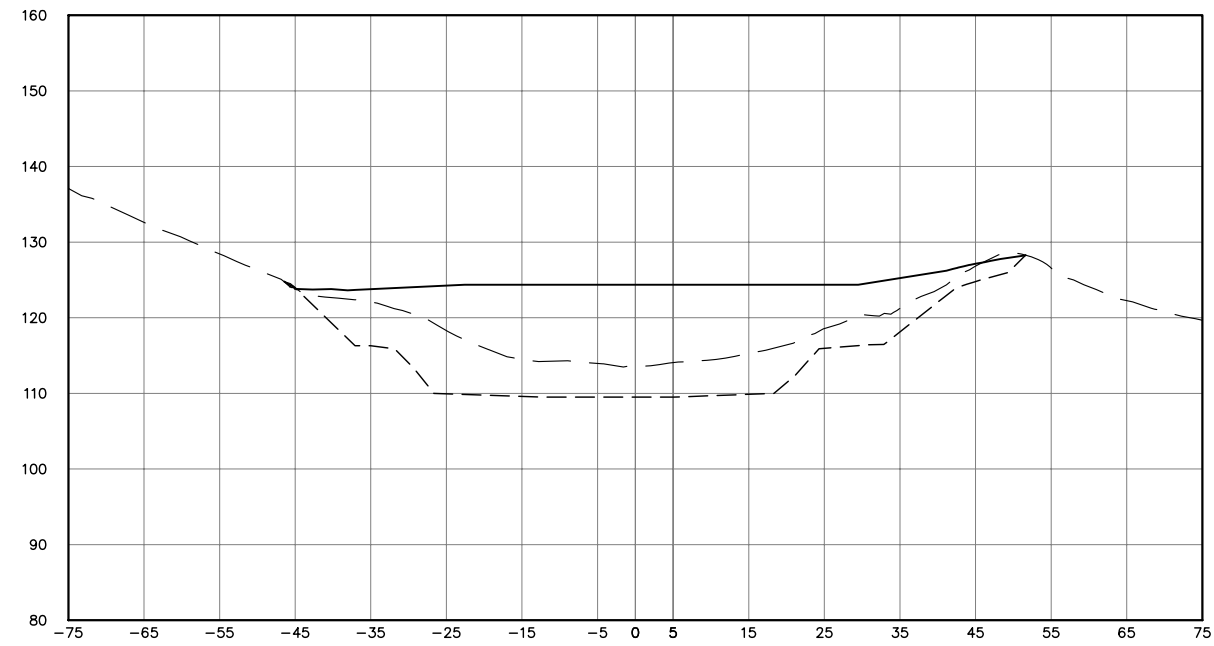
SECTION B-B



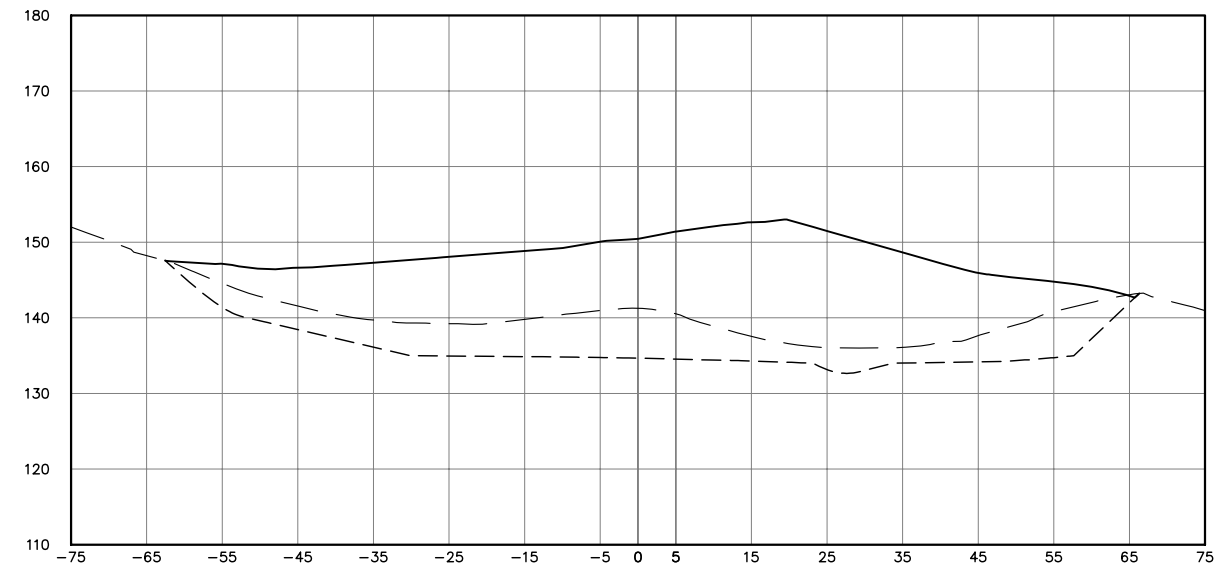
LEGEND :


- - - - - EXISTING GROUND
- · - · - TOP OF BASAL LINER
- PROPOSED RESTORATION LEVEL

SECTION A-A

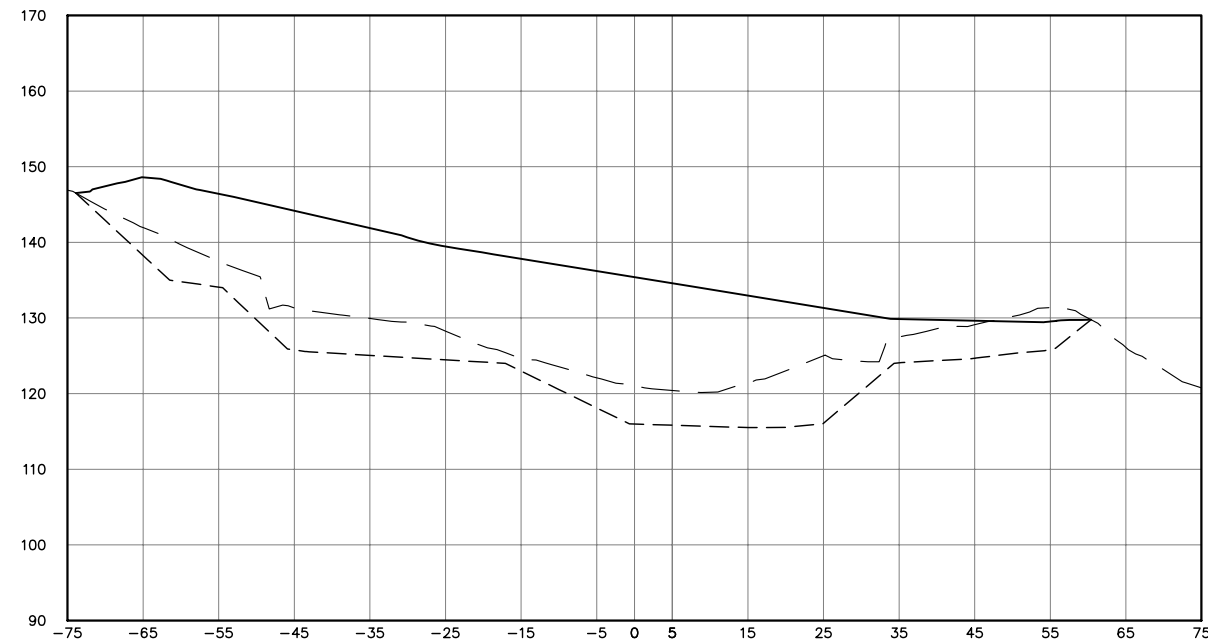


SECTION C-C



PROJECT TITLE:	CLIENT:	CONSULTANT:	DRAWING TITLE:	DESIGNED BY:	DRAWING CONTENT:	DRWG. NO.
THE MASTER PLAN ON SOLID WASTE MANAGEMENT FOR BORACAY ISLAND AND MALAY MUNICIPALITY	JAPAN INTERNATIONAL COOPERATION AGENCY	 <b>NIPPON KOEI CO., LTD.</b> 2, Kojimachi 4-chome, Chiyoda-ku Tokyo 102-0083 JAPAN Phone : +81-3-5276-3930 Fax : +81-3-5276-2656 E-mail : int.a@nx.n-koei.co.jp http://www.n-koei.co.jp	DEVELOPMENT OF NEW LANDFILL SITE IN MALAY MUNICIPALITY	DRAWN BY:	CROSS SECTION A-A CROSS SECTION B-B CROSS SECTION C-C	<b>K-11</b>
				CHECKED BY:		
				APPROVED BY:		
				DATE: January 2008		
						SET NO. 11 OF 21

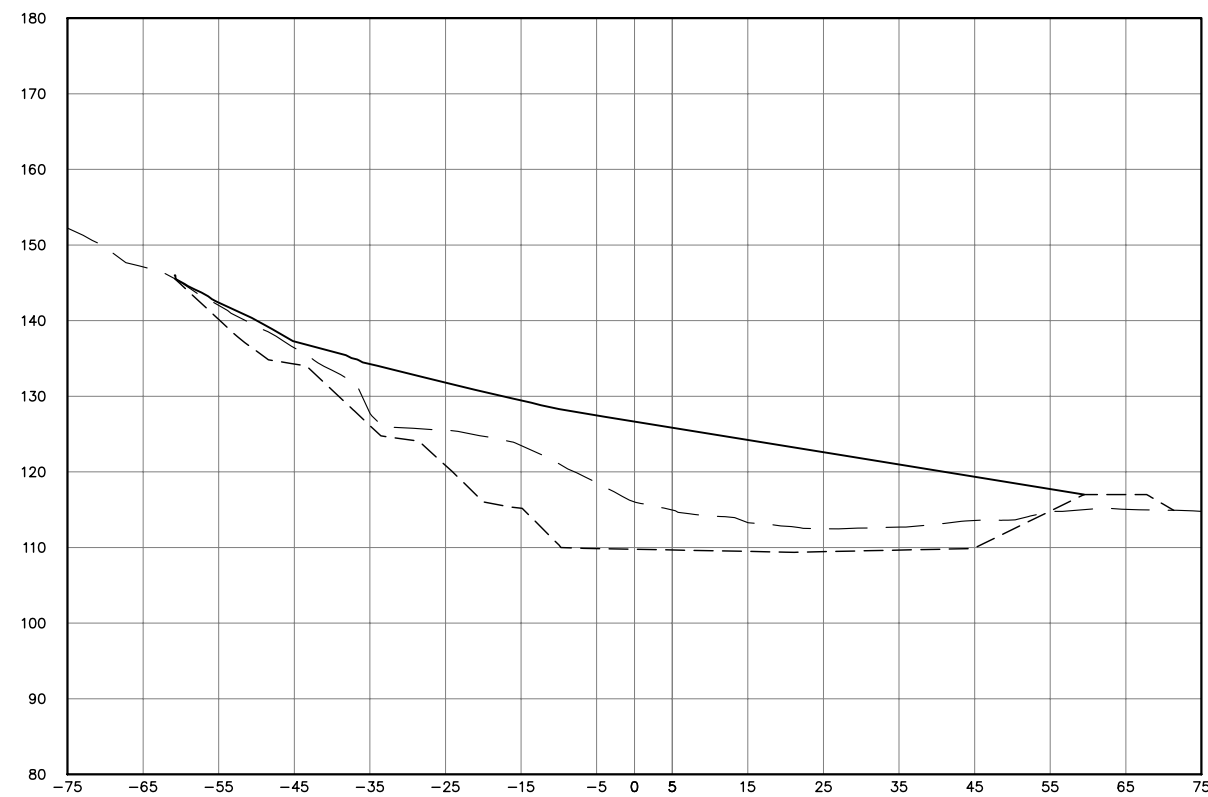
SECTION 2-2



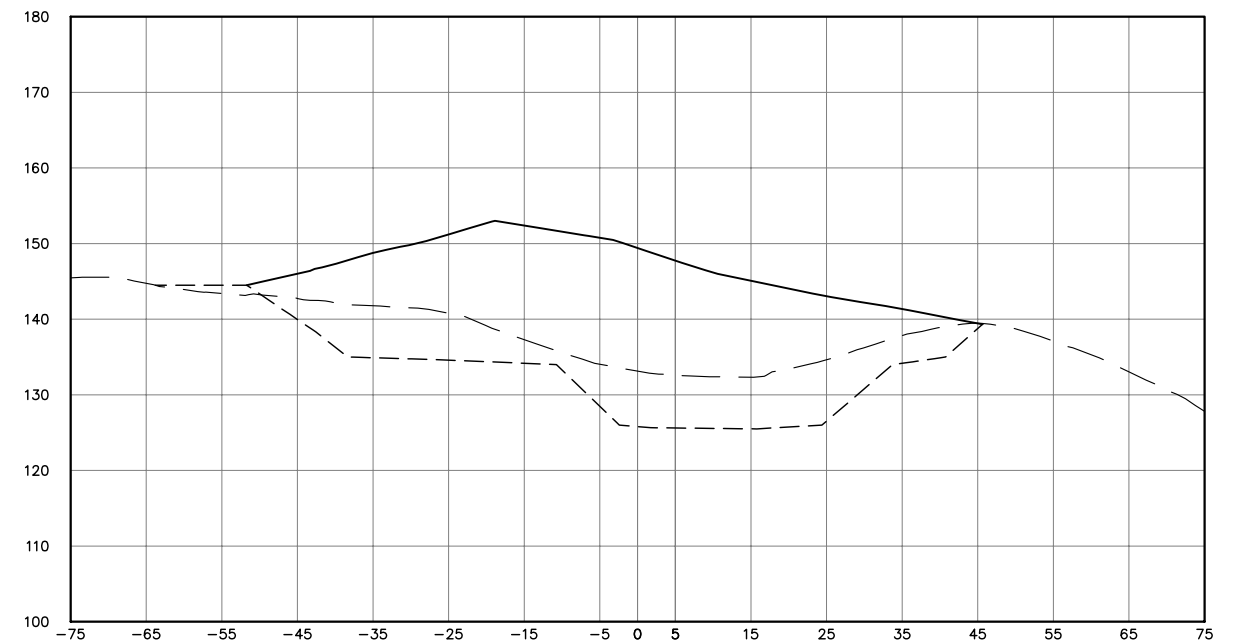
LEGEND :


- - - - - EXISTING GROUND
- · - · - TOP OF BASAL LINER
- PROPOSED RESTORATION LEVEL

SECTION 1-1

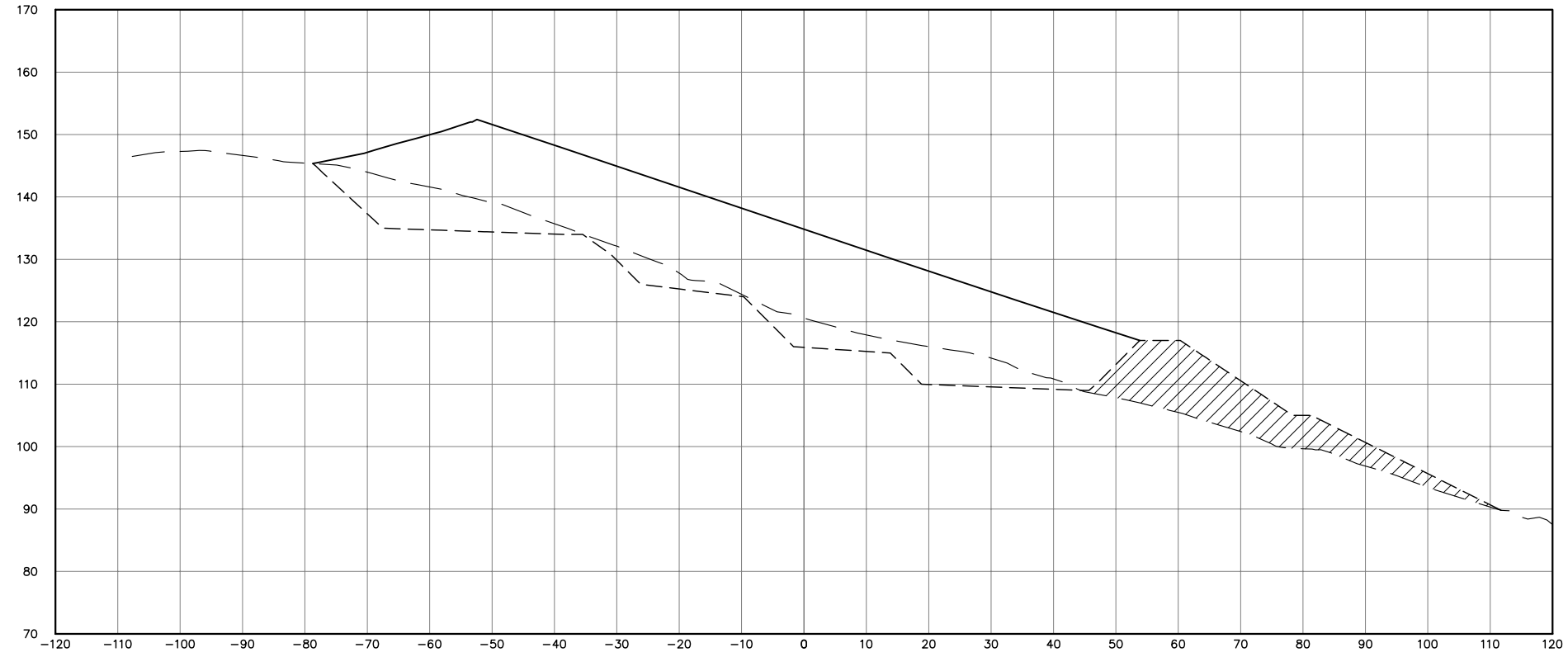


SECTION 3-3



PROJECT TITLE:	CLIENT:	CONSULTANT:	DRAWING TITLE:	DESIGNED BY:	DRAWING CONTENT:	DRWG. NO.
THE MASTER PLAN ON SOLID WASTE MANAGEMENT FOR BORACAY ISLAND AND MALAY MUNICIPALITY	JAPAN INTERNATIONAL COOPERATION AGENCY	 <b>NIPPON KOEI CO., LTD.</b> 2, Kojimachi 4-chome, Chiyoda-ku Tokyo 102-0083 JAPAN Phone : +81-3-5276-3930 Fax : +81-3-5276-2656 E-mail : int.e@nx.n-koei.co.jp http://www.n-koei.co.jp	DEVELOPMENT OF NEW LANDFILL SITE IN MALAY MUNICIPALITY	DRAWN BY:	CROSS SECTION 1-1 CROSS SECTION 2-2 CROSS SECTION 3-3	<b>K-12</b>
				CHECKED BY:		
				APPROVED BY:		
				DATE: January 2008		
						SET NO. 12 OF 21

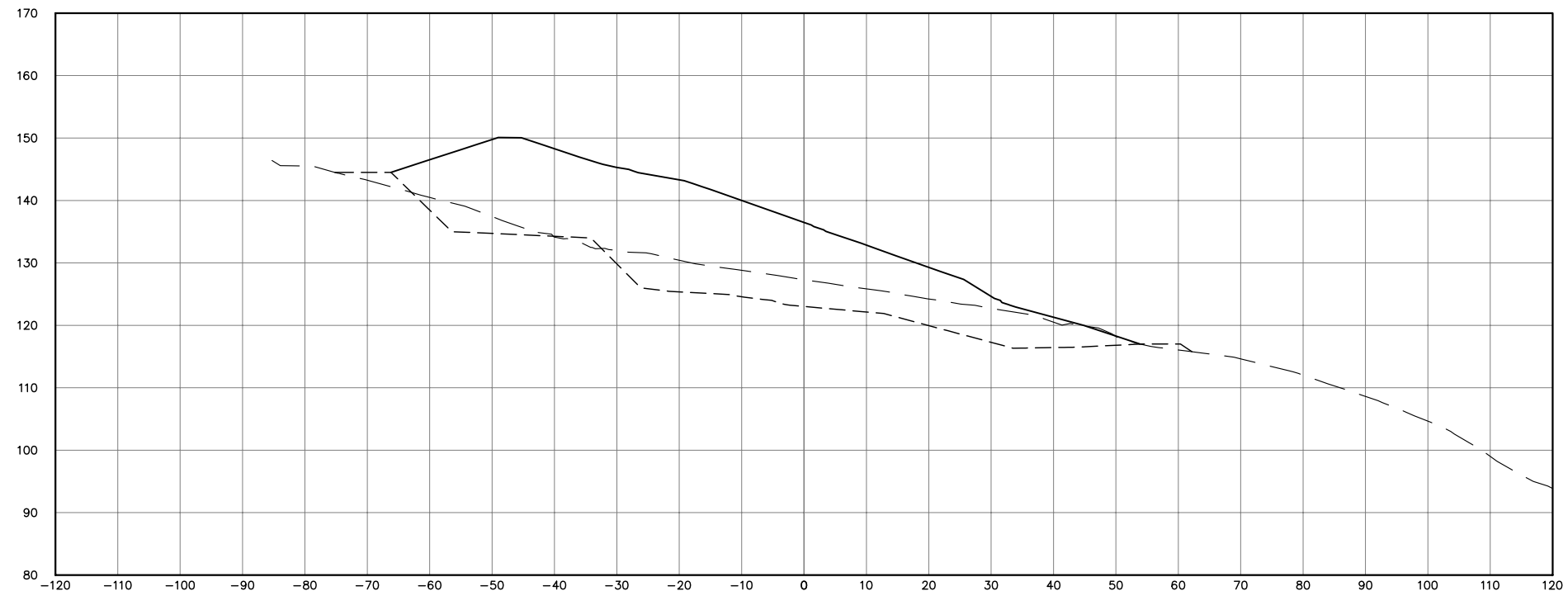
SECTION Y-Y




LEGEND :

- - - - - EXISTING GROUND
- - - - - TOP OF BASAL LINER
- PROPOSED RESTORATION LEVEL

SECTION X-X

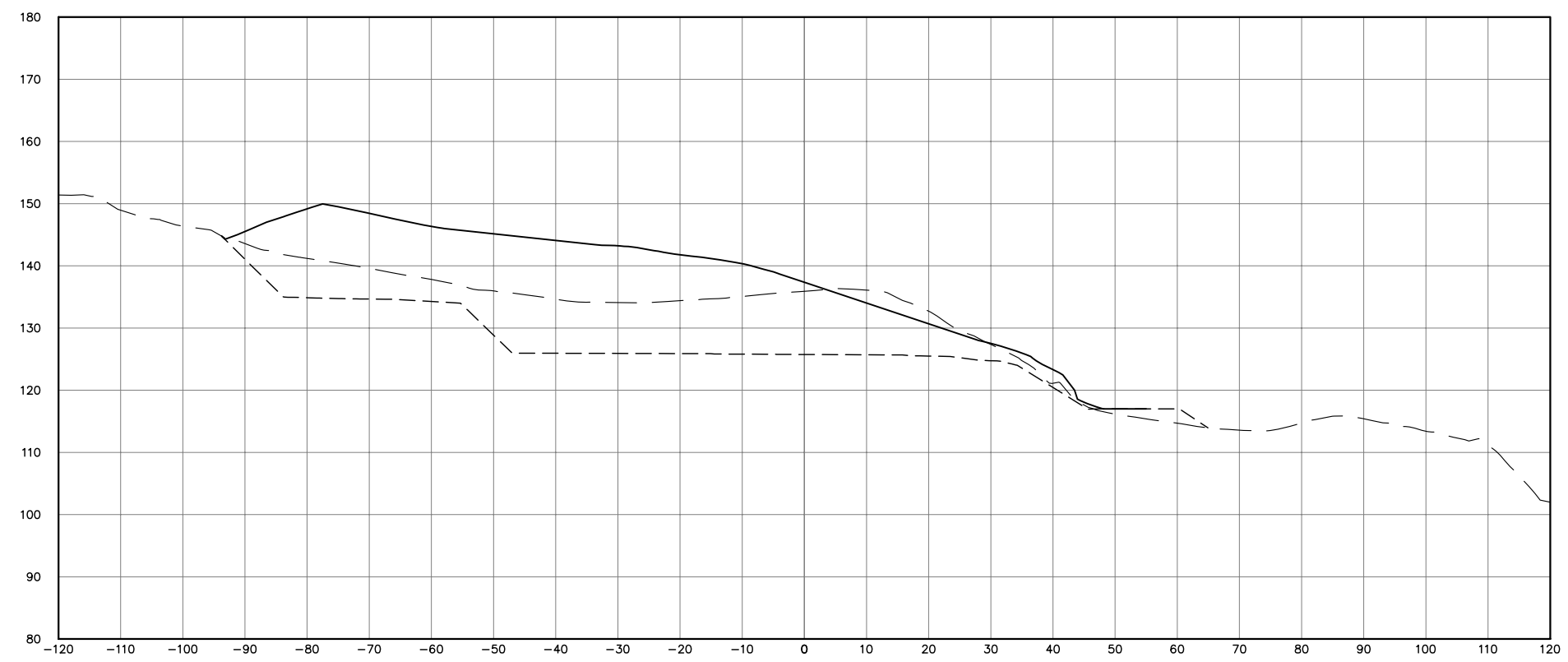



PROJECT TITLE:	CLIENT:	CONSULTANT:	DRAWING TITLE:	DESIGNED BY:	DRAWING CONTENT:	DRWG. NO.
THE MASTER PLAN ON SOLID WASTE MANAGEMENT FOR BORACAY ISLAND AND MALAY MUNICIPALITY	JAPAN INTERNATIONAL COOPERATION AGENCY	 <b>NIPPON KOEI CO., LTD.</b> 2, Kojimachi 4-chome, Chiyoda-ku Tokyo 102-0083 JAPAN Phone : +81-3-5276-3930 Fax : +81-3-5276-2656 E-mail : int.a@nx.n-koei.co.jp http://www.n-koei.co.jp	DEVELOPMENT OF NEW LANDFILL SITE IN MALAY MUNICIPALITY	DRAWN BY:	CROSS SECTION X-X CROSS SECTION Y-Y	<b>K-13</b>
				CHECKED BY:		
				APPROVED BY:		
				DATE: January 2008		
						SET NO. 13 OF 21

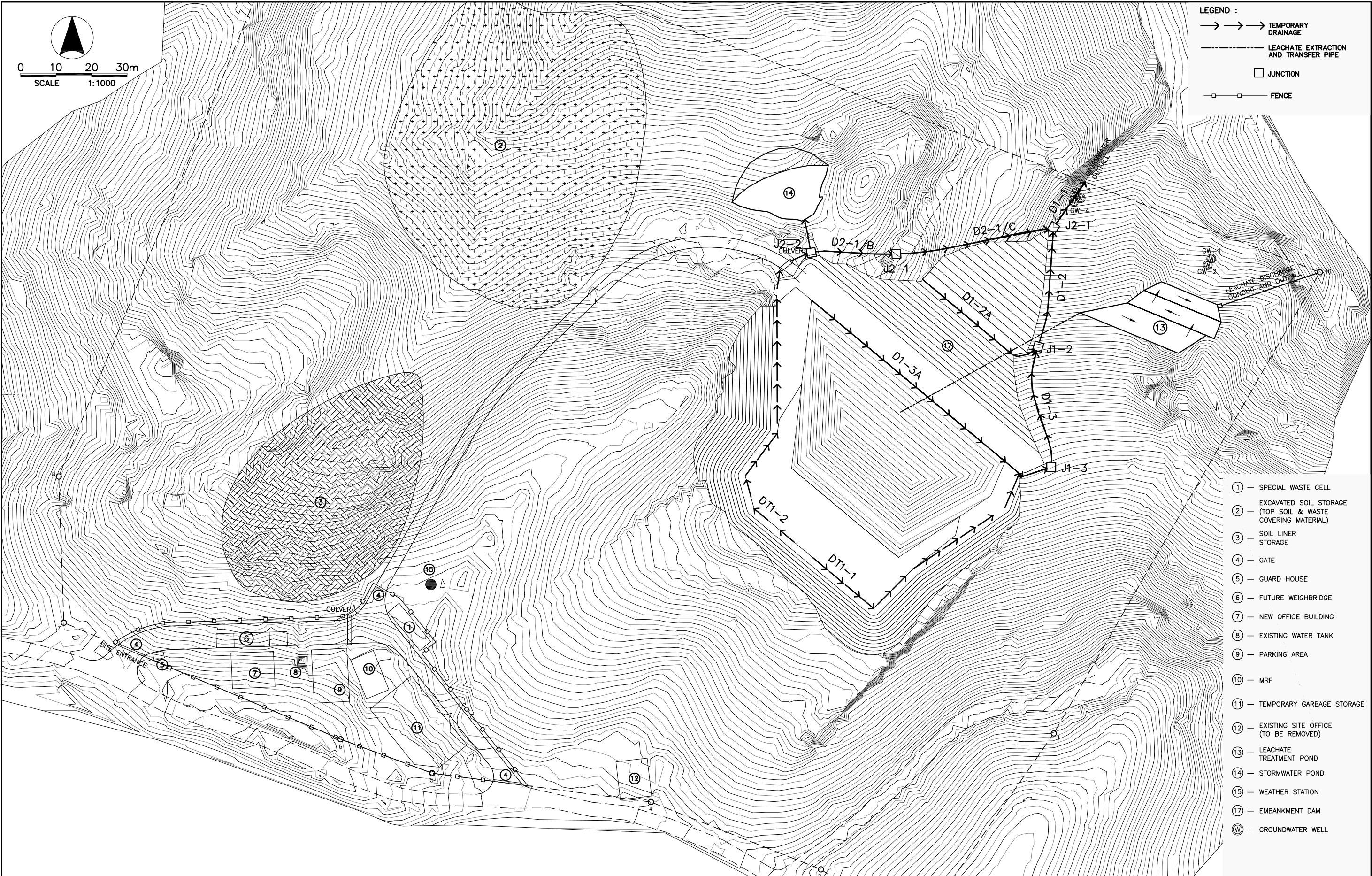
LEGEND :

- — — — — EXISTING GROUND
- - - - - TOP OF BASAL LINER
- PROPOSED RESTORATION LEVEL

SECTION Z-Z




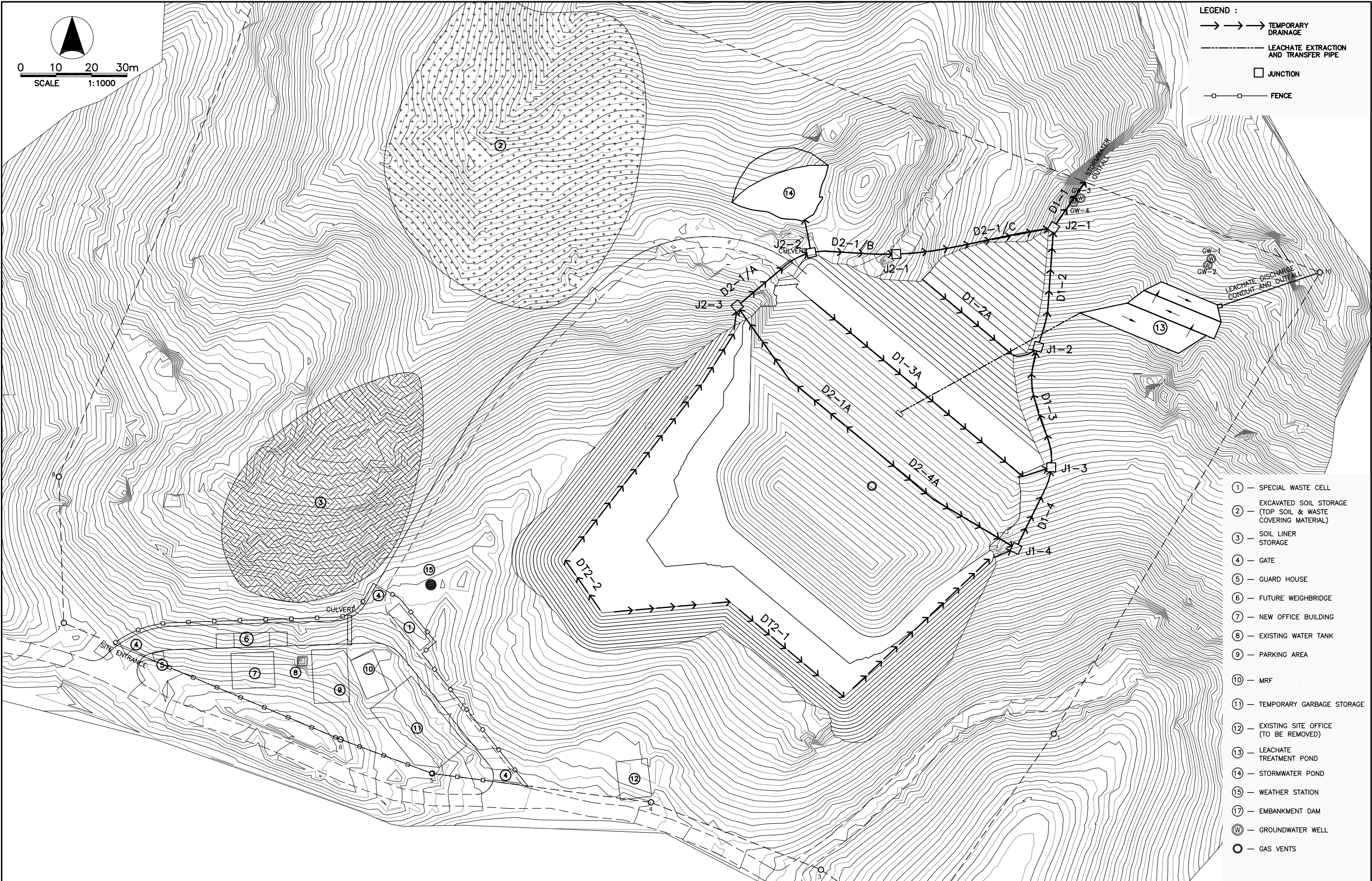
PROJECT TITLE:	CLIENT:	CONSULTANT:	DRAWING TITLE:	DESIGNED BY:	DRAWING CONTENT:	DRWG. NO.
THE MASTER PLAN ON SOLID WASTE MANAGEMENT FOR BORACAY ISLAND AND MALAY MUNICIPALITY	JAPAN INTERNATIONAL COOPERATION AGENCY	 <p><b>NIPPON KOEI CO., LTD.</b>                  2, Kojimachi 4-chome, Chiyoda-ku                  Tokyo 102-0083 JAPAN                  Phone : +81-3-5276-3930 Fax : +81-3-5276-2656                  E-mail : int.a@nx.n-koei.co.jp                  http://www.n-koei.co.jp</p>	DEVELOPMENT OF NEW LANDFILL SITE IN MALAY MUNICIPALITY	DRAWN BY: CHECKED BY: APPROVED BY: DATE: January 2008	CROSS SECTION Z-Z	<b>K-14</b> SET NO. 14 OF 21



- LEGEND :
- → → → TEMPORARY DRAINAGE
  - LEACHATE EXTRACTION AND TRANSFER PIPE
  - JUNCTION
  - FENCE


- ① - SPECIAL WASTE CELL
- ② - EXCAVATED SOIL STORAGE (TOP SOIL & WASTE COVERING MATERIAL)
- ③ - SOIL LINER STORAGE
- ④ - GATE
- ⑤ - GUARD HOUSE
- ⑥ - FUTURE WEIGHBRIDGE
- ⑦ - NEW OFFICE BUILDING
- ⑧ - EXISTING WATER TANK
- ⑨ - PARKING AREA
- ⑩ - MRF
- ⑪ - TEMPORARY GARBAGE STORAGE
- ⑫ - EXISTING SITE OFFICE (TO BE REMOVED)
- ⑬ - LEACHATE TREATMENT POND
- ⑭ - STORMWATER POND
- ⑮ - WEATHER STATION
- ⑰ - EMBANKMENT DAM
- ⊕ - GROUNDWATER WELL

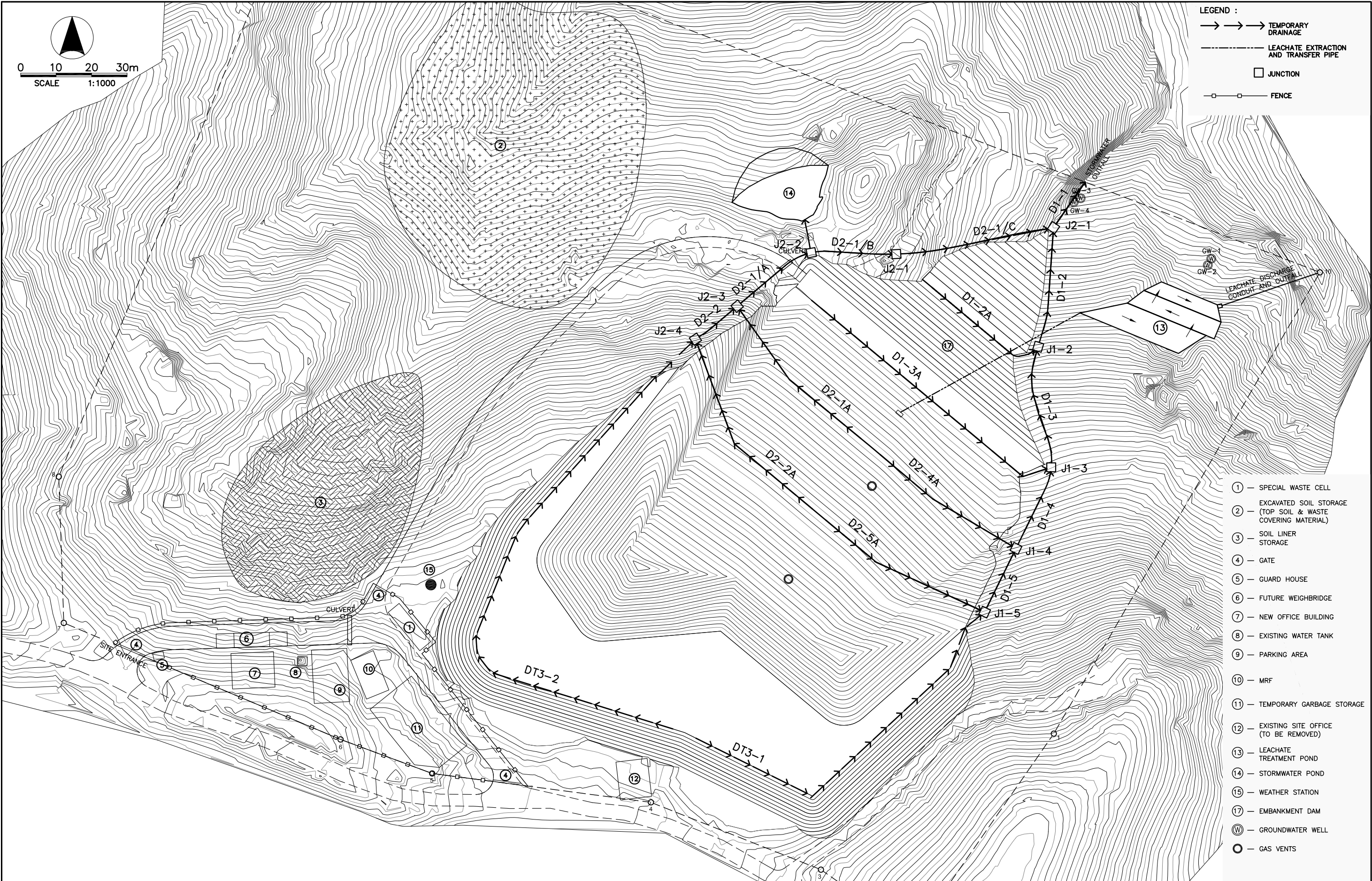
PROJECT TITLE:	CLIENT:	CONSULTANT:	DRAWING TITLE:	DESIGNED BY:	DRAWING CONTENT:	DRWG. NO.
THE MASTER PLAN ON SOLID WASTE MANAGEMENT FOR BORACAY ISLAND AND MALAY MUNICIPALITY	JAPAN INTERNATIONAL COOPERATION AGENCY	 <b>NIPPON KOEI CO., LTD.</b> 2, Kojimachi 4-chome, Chiyoda-ku Tokyo 102-0083 JAPAN Phone : +81-3-5276-3930 Fax : +81-3-5276-2656 E-mail : int.e@nx.n-koei.co.jp http://www.n-koei.co.jp	DEVELOPMENT OF NEW LANDFILL SITE IN MALAY MUNICIPALITY	DRAWN BY: CHECKED BY: APPROVED BY: DATE: January 2008	PROGRESSIVE RESTORATION CONTOURS AND SURFACE WATER MANAGEMENT SYSTEM SUB-PHASE 1A	<b>K-15</b> SET NO. 15 OF 21



- LEGEND :
- → → → TEMPORARY DRAINAGE
  - LEACHATE EXTRACTION AND TRANSFER PIPE
  - JUNCTION
  - FENCE

- ① — SPECIAL WASTE CELL
- ② — EXCAVATED SOIL STORAGE (TOP SOIL & WASTE COVERING MATERIAL)
- ③ — SOIL LINER STORAGE
- ④ — GATE
- ⑤ — GUARD HOUSE
- ⑥ — FUTURE WEIGHBRIDGE
- ⑦ — NEW OFFICE BUILDING
- ⑧ — EXISTING WATER TANK
- ⑨ — PARKING AREA
- ⑩ — MRF
- ⑪ — TEMPORARY GARBAGE STORAGE
- ⑫ — EXISTING SITE OFFICE (TO BE REMOVED)
- ⑬ — LEACHATE TREATMENT POND
- ⑭ — STORMWATER POND
- ⑮ — WEATHER STATION
- ⑰ — EMBANKMENT DAM
- Ⓜ — GROUNDWATER WELL
- ⊙ — GAS VENTS

PROJECT TITLE:	CLIENT:	CONSULTANT:	DRAWING TITLE:	DESIGNED BY:	DRAWING CONTENT:	DRWG. NO.
THE MASTER PLAN ON SOLID WASTE MANAGEMENT FOR BORACAY ISLAND AND MALAY MUNICIPALITY	JAPAN INTERNATIONAL COOPERATION AGENCY	 <b>NIPPON KOEI CO., LTD.</b> 2, Kojimachi 4-chome, Chiyoda-ku Tokyo 102-0083 JAPAN Phone : +81-3-5276-3930 Fax : +81-3-5276-2656 E-mail : int.a@nx.n-koei.co.jp http://www.n-koei.co.jp	DEVELOPMENT OF NEW LANDFILL SITE IN MALAY MUNICIPALITY	DRAWN BY: CHECKED BY: APPROVED BY: DATE: January 2008	PROGRESSIVE RESTORATION CONTOURS AND SURFACE WATER MANAGEMENT SYSTEM SUB-PHASE 1B	<b>K-16</b> SET NO. 16 OF 21




LEGEND :

- → → → TEMPORARY DRAINAGE
- LEACHATE EXTRACTION AND TRANSFER PIPE
- JUNCTION
- FENCE

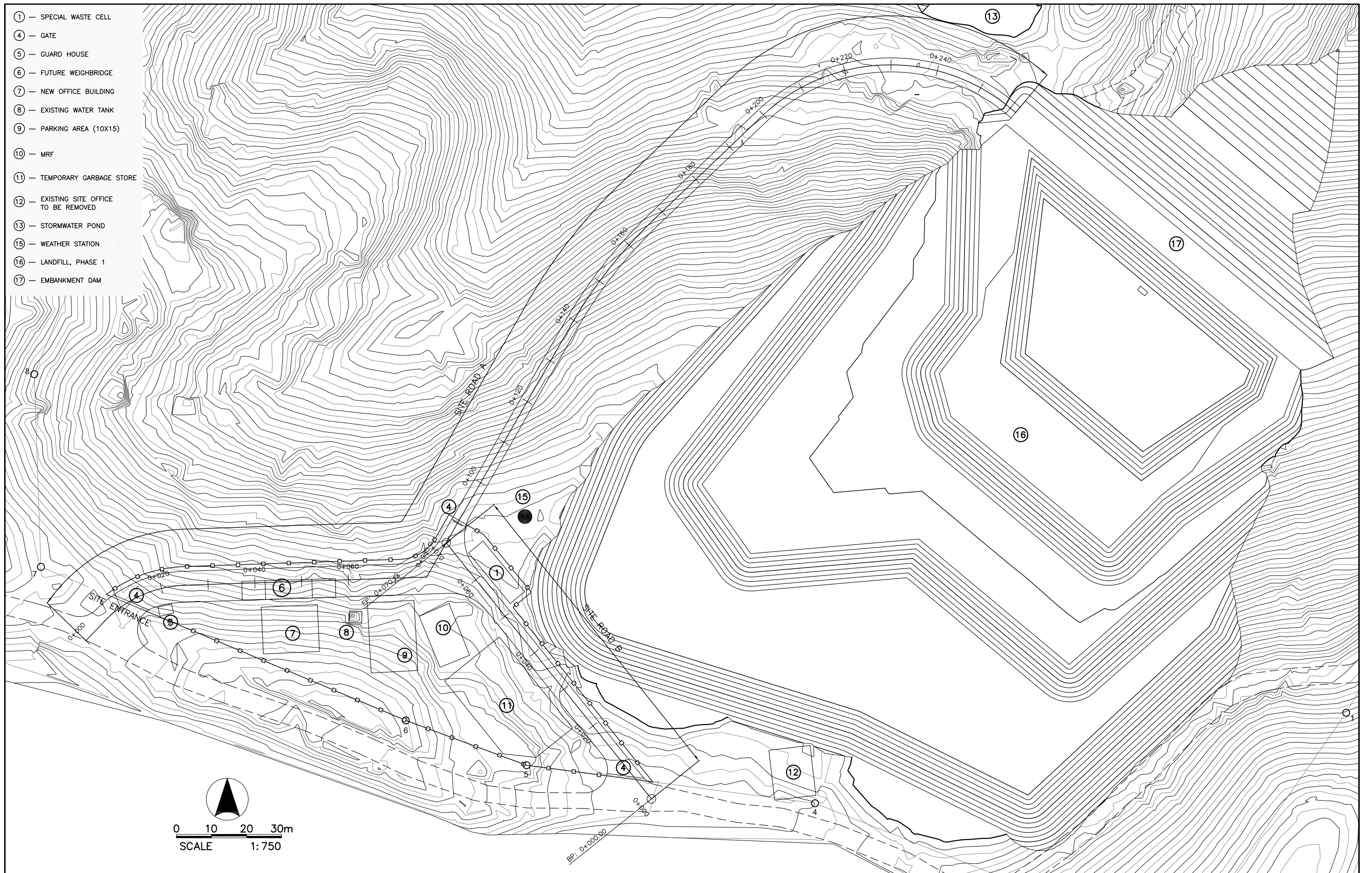
0 10 20 30m  
SCALE 1:1000


- ① - SPECIAL WASTE CELL
- ② - EXCAVATED SOIL STORAGE (TOP SOIL & WASTE COVERING MATERIAL)
- ③ - SOIL LINER STORAGE
- ④ - GATE
- ⑤ - GUARD HOUSE
- ⑥ - FUTURE WEIGHBRIDGE
- ⑦ - NEW OFFICE BUILDING
- ⑧ - EXISTING WATER TANK
- ⑨ - PARKING AREA
- ⑩ - MRF
- ⑪ - TEMPORARY GARBAGE STORAGE
- ⑫ - EXISTING SITE OFFICE (TO BE REMOVED)
- ⑬ - LEACHATE TREATMENT POND
- ⑭ - STORMWATER POND
- ⑮ - WEATHER STATION
- ⑰ - EMBANKMENT DAM
- Ⓜ - GROUNDWATER WELL
- - GAS VENTS

PROJECT TITLE:	CLIENT:	CONSULTANT:	DRAWING TITLE:	DESIGNED BY:	DRAWING CONTENT:	DRWG. NO.
THE MASTER PLAN ON SOLID WASTE MANAGEMENT FOR BORACAY ISLAND AND MALAY MUNICIPALITY	JAPAN INTERNATIONAL COOPERATION AGENCY	 <b>NIPPON KOEI CO., LTD.</b> 2, Kojimachi 4-chome, Chiyoda-ku Tokyo 102-0083 JAPAN Phone : +81-3-5276-3930 Fax : +81-3-5276-2656 E-mail : int.e@nx.n-koei.co.jp http://www.n-koei.co.jp	DEVELOPMENT OF NEW LANDFILL SITE IN MALAY MUNICIPALITY	DRAWN BY: CHECKED BY: APPROVED BY: DATE: January 2008	PROGRESSIVE RESTORATION CONTOURS AND SURFACE WATER MANAGEMENT SYSTEM SUB-PHASE 1C	<b>K-17</b> SET NO. 17 OF 21

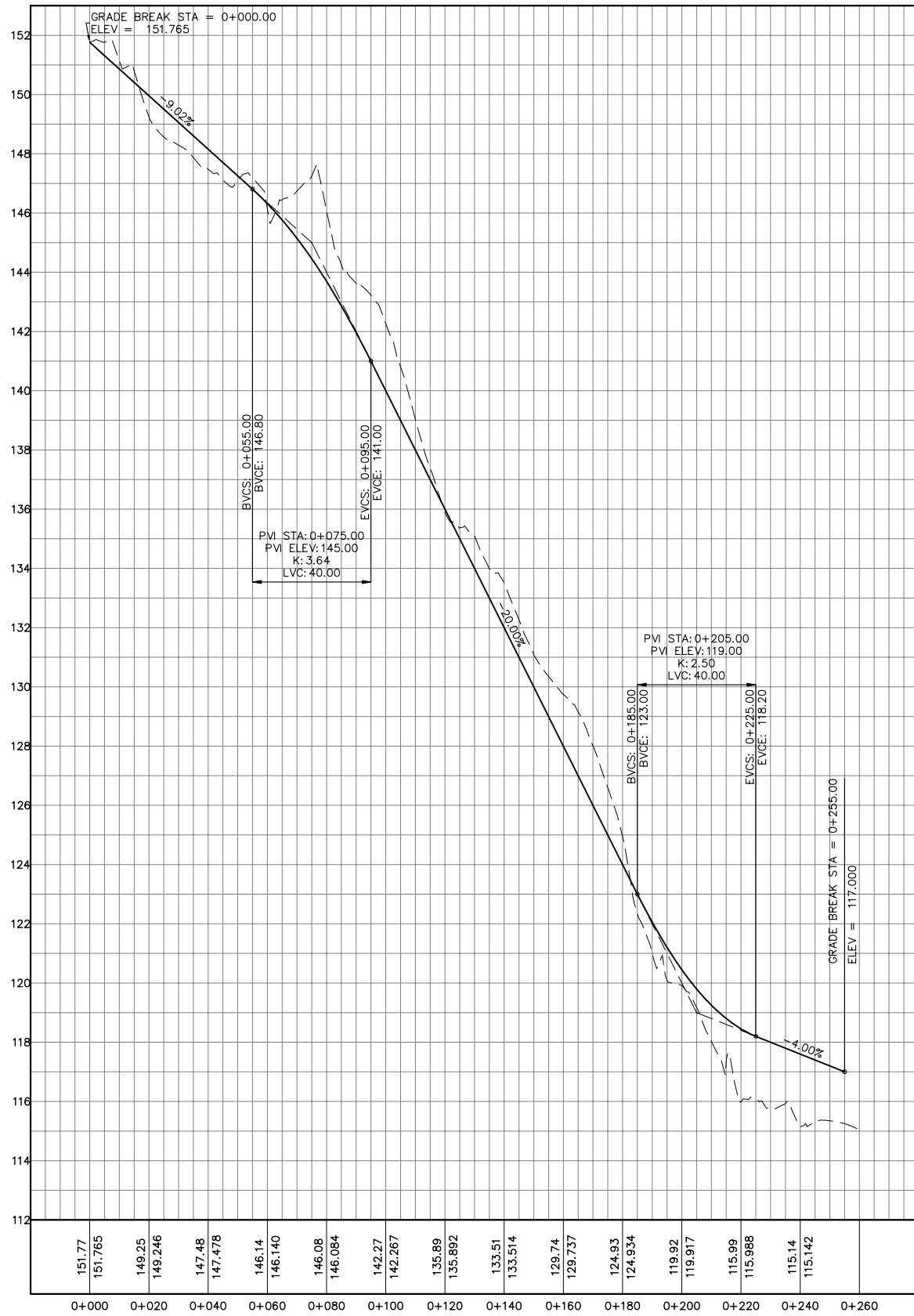


- ① — SPECIAL WASTE CELL
- ④ — GATE
- ⑤ — GUARD HOUSE
- ⑥ — FUTURE WEIGHBRIDGE
- ⑦ — NEW OFFICE BUILDING
- ⑧ — EXISTING WATER TANK
- ⑨ — PARKING AREA (10X15)
- ⑩ — MRF
- ⑪ — TEMPORARY GARBAGE STORE
- ⑫ — EXISTING SITE OFFICE TO BE REMOVED
- ⑬ — STORMWATER POND
- ⑮ — WEATHER STATION
- ⑯ — LANDFILL, PHASE 1
- ⑰ — EMBANKMENT DAM

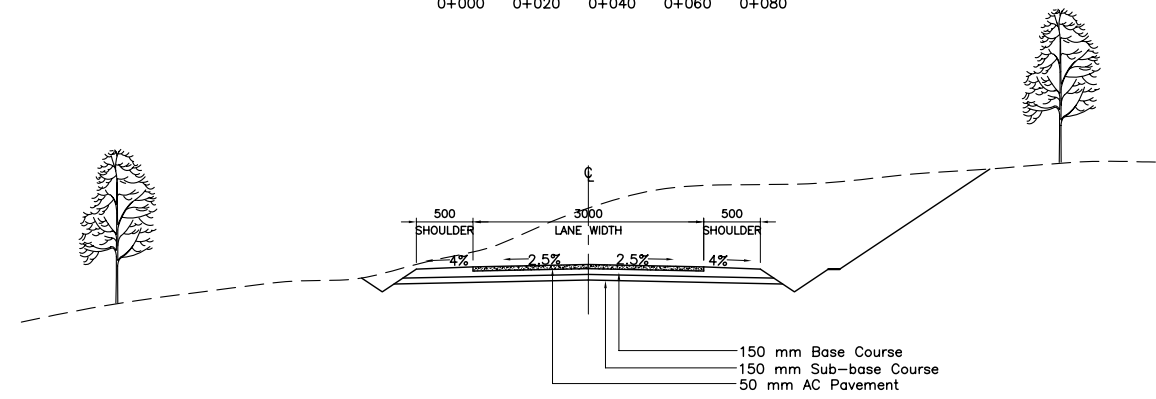
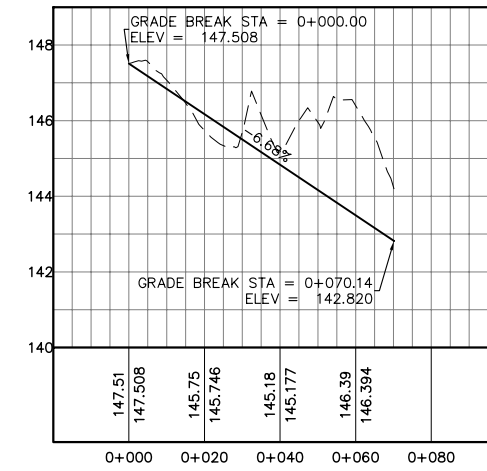


PROJECT TITLE:	CLIENT:	CONSULTANT:	DRAWING TITLE:	DESIGNED BY:	DRAWING CONTENT:	DRWG. NO.
THE MASTER PLAN ON SOLID WASTE MANAGEMENT FOR BORACAY ISLAND AND MALAY MUNICIPALITY	JAPAN INTERNATIONAL COOPERATION AGENCY	 <b>NIPPON KOEI CO., LTD.</b> 2, Kojimachi 4-chome, Chiyoda-ku Tokyo 102-0083 JAPAN Phone : +81-3-5276-3930 Fax : +81-3-5276-2656 E-mail : int.e@nx.n-koei.co.jp http://www.n-koei.co.jp	DEVELOPMENT OF NEW LANDFILL SITE IN MALAY MUNICIPALITY	DRAWN BY: CHECKED BY: APPROVED BY: DATE: January 2008	LAYOUT OF OPERATION COMPOUND AND ALIGNMENT OF SITE ROAD	<b>K-18</b> SET NO. 18 OF 21

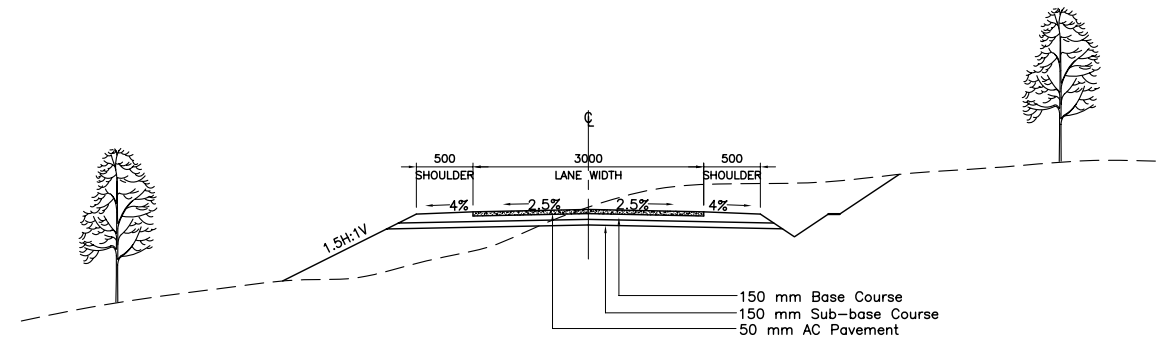
SITE ROAD A PROFILE



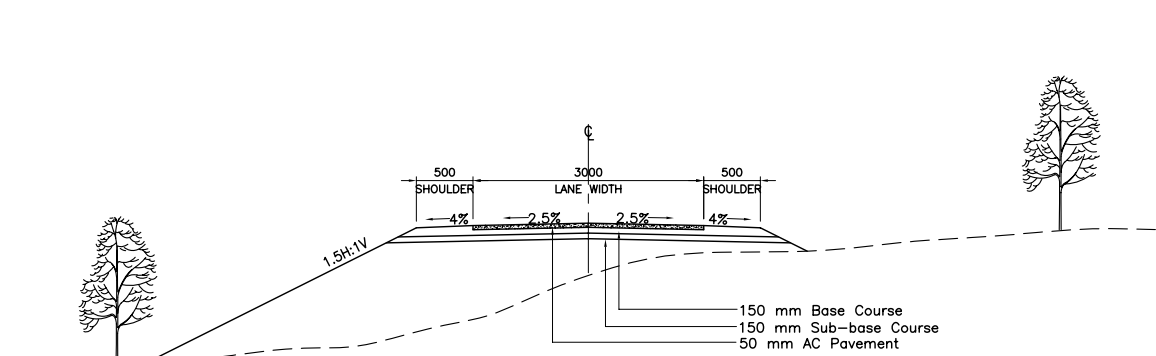
SITE ROAD B PROFILE




CUT SECTION

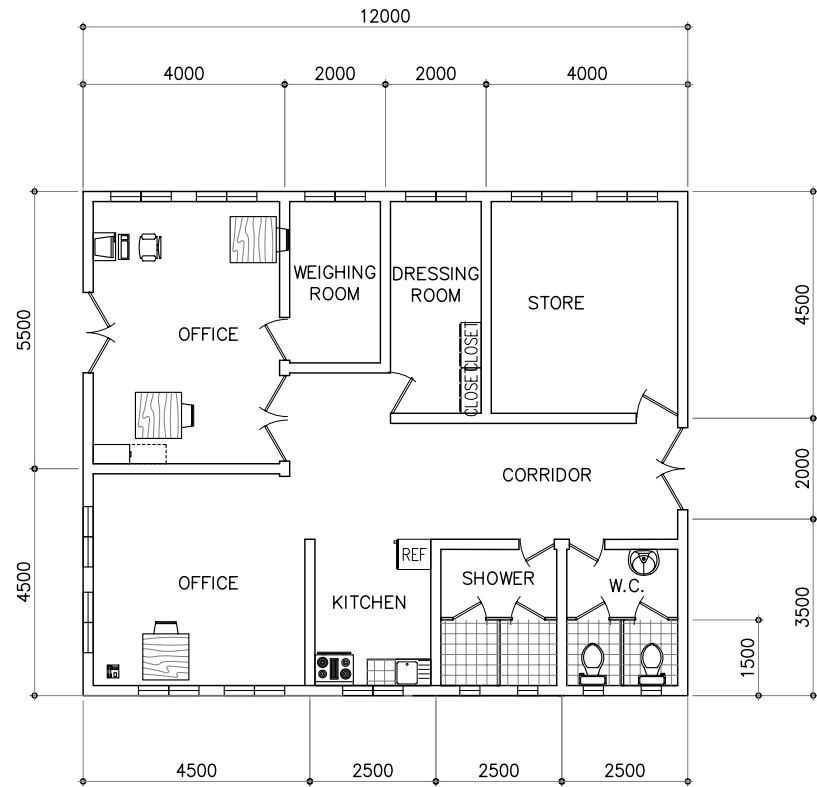


CUT AND FILL SECTION

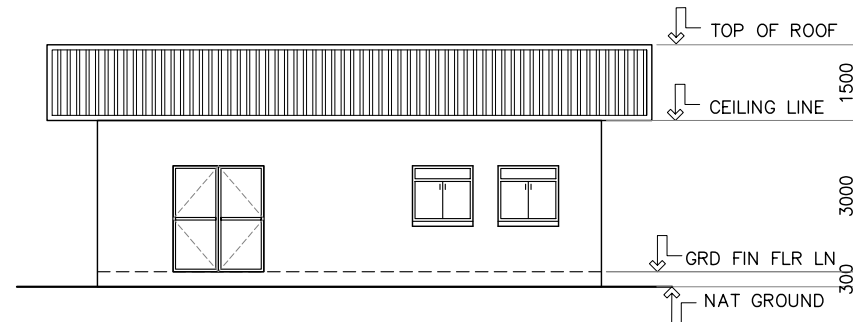


FILL SECTION

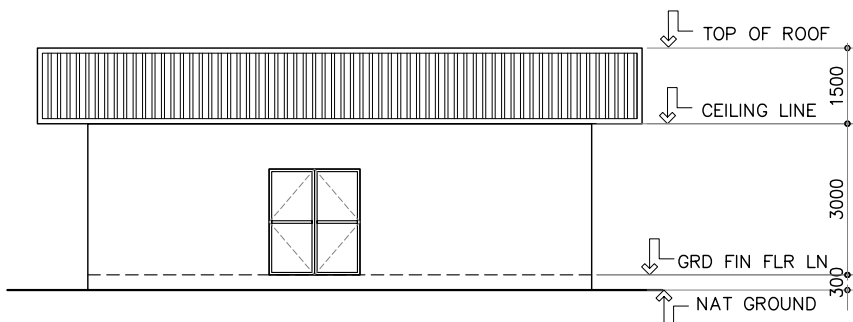
PROJECT TITLE:	CLIENT:	CONSULTANT:	DRAWING TITLE:	DESIGNED BY:	DRAWING CONTENT:	DRWG. NO.
THE MASTER PLAN ON SOLID WASTE MANAGEMENT FOR BORACAY ISLAND AND MALAY MUNICIPALITY	JAPAN INTERNATIONAL COOPERATION AGENCY	 <b>NIPPON KOEI CO., LTD.</b> 2, Kojimachi 4-chome, Chiyoda-ku Tokyo 102-0083 JAPAN Phone : +81-3-5276-3930 Fax : +81-3-5276-2656 E-mail : int.a@nx.n-koei.co.jp http://www.n-koei.co.jp	DEVELOPMENT OF NEW LANDFILL SITE IN MALAY MUNICIPALITY	DRAWN BY:	PROFILE AND TYPICAL SECTIONS OF SITE ROADS	<b>K-19</b>
				CHECKED BY:		
				APPROVED BY:		SET NO.
				DATE: January 2008		19 OF 21



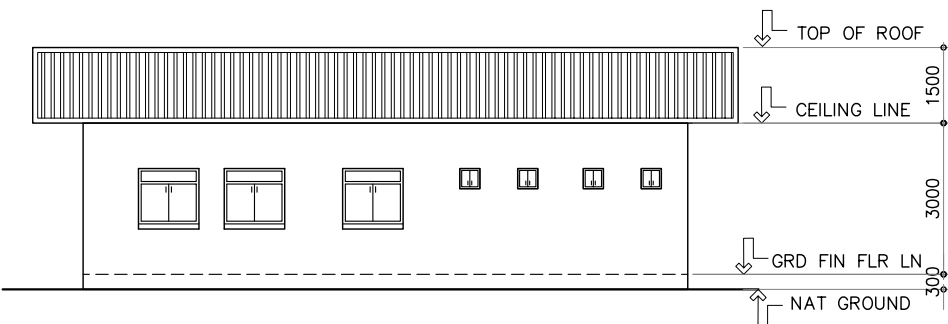
FLOOR PLAN



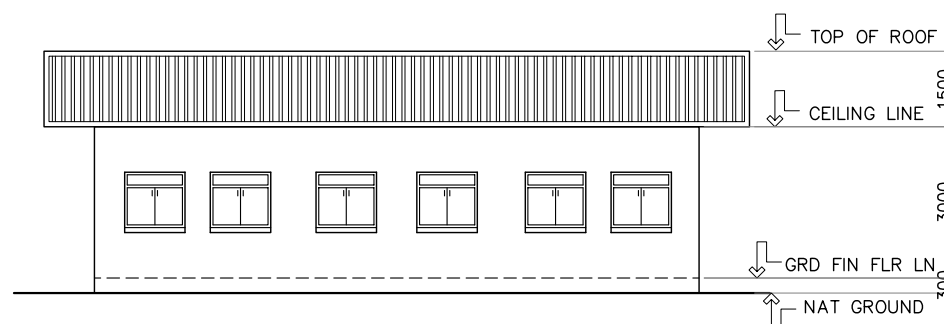
WEST SIDE ELEVATION



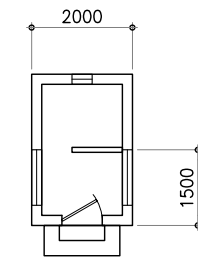
EAST SIDE ELEVATION



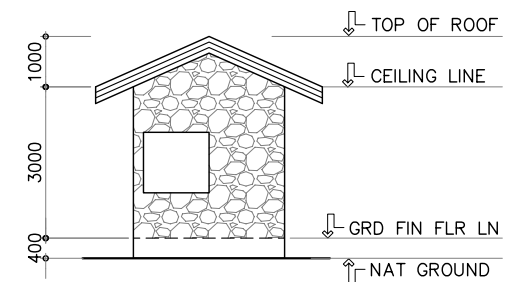
REAR ELEVATION



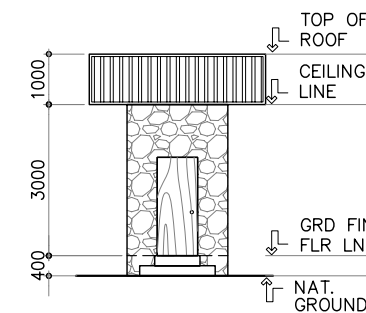
FRONT ELEVATION



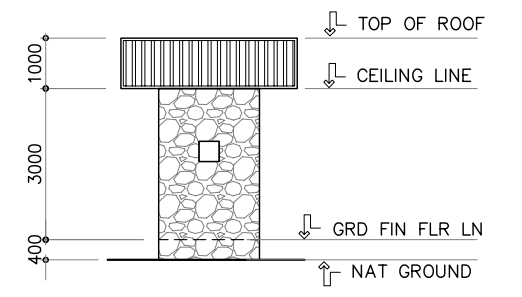
FLOOR PLAN



SIDE ELEVATION




FRONT ELEVATION

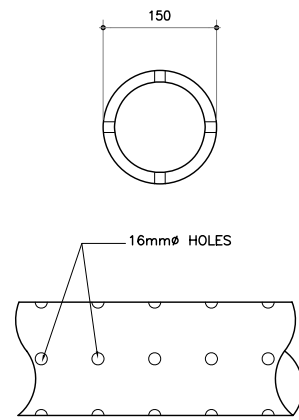


REAR ELEVATION

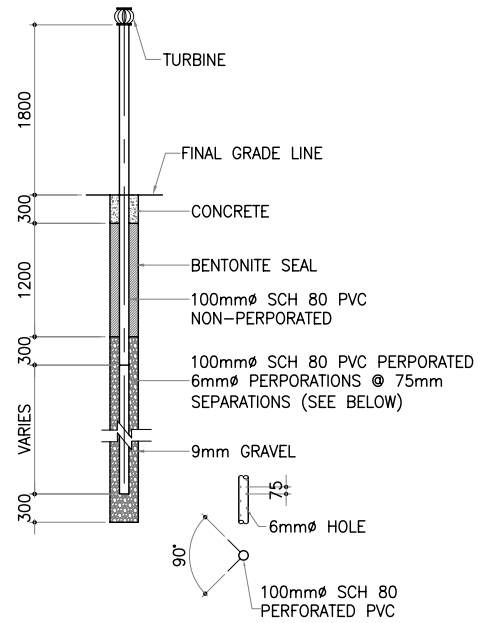
NEW SITE OFFICE  
SCALE 1 : 150 M

GUARD HOUSE  
SCALE 1 : 150 M

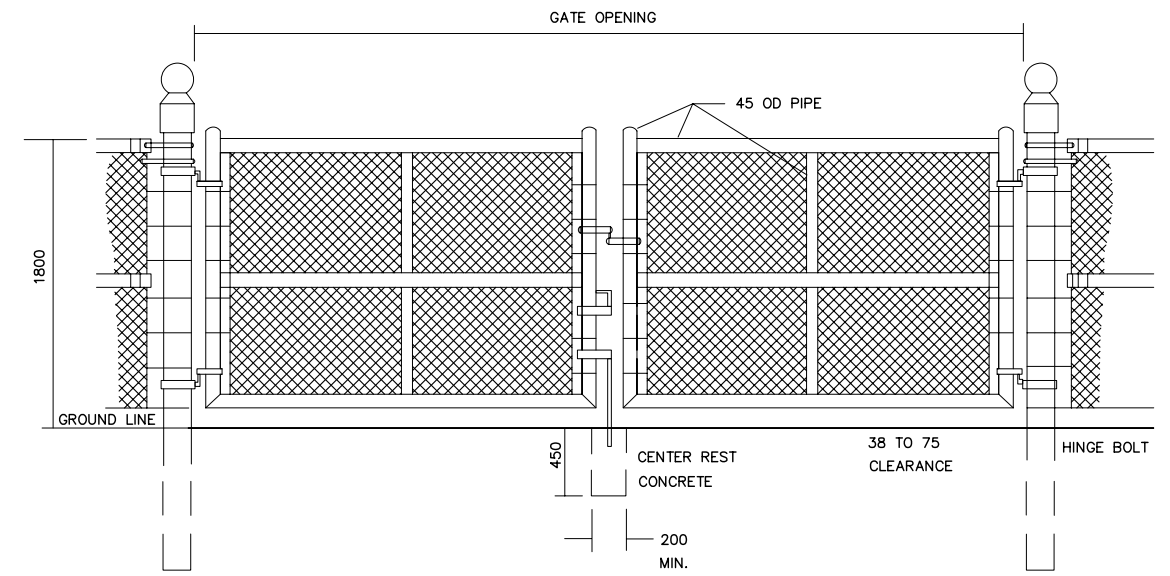
PROJECT TITLE:	CLIENT:	CONSULTANT:	DRAWING TITLE:	DESIGNED BY:	DRAWING CONTENT:	DRWG. NO.
THE MASTER PLAN ON SOLID WASTE MANAGEMENT FOR BORACAY ISLAND AND MALAY MUNICIPALITY	JAPAN INTERNATIONAL COOPERATION AGENCY	 <b>NIPPON KOEI CO., LTD.</b> 2, Kojimachi 4-chome, Chiyoda-ku Tokyo 102-0083 JAPAN Phone : +81-3-5276-3930 Fax : +81-3-5276-2656 E-mail : int.a@nx.n-koei.co.jp http://www.n-koei.co.jp	DEVELOPMENT OF NEW LANDFILL SITE IN MALAY MUNICIPALITY	DRAWN BY: CHECKED BY: APPROVED BY: DATE: January 2008	DETAILS OF BUILDING FACILITIES	<b>K-20</b> SET NO. 20 OF 21



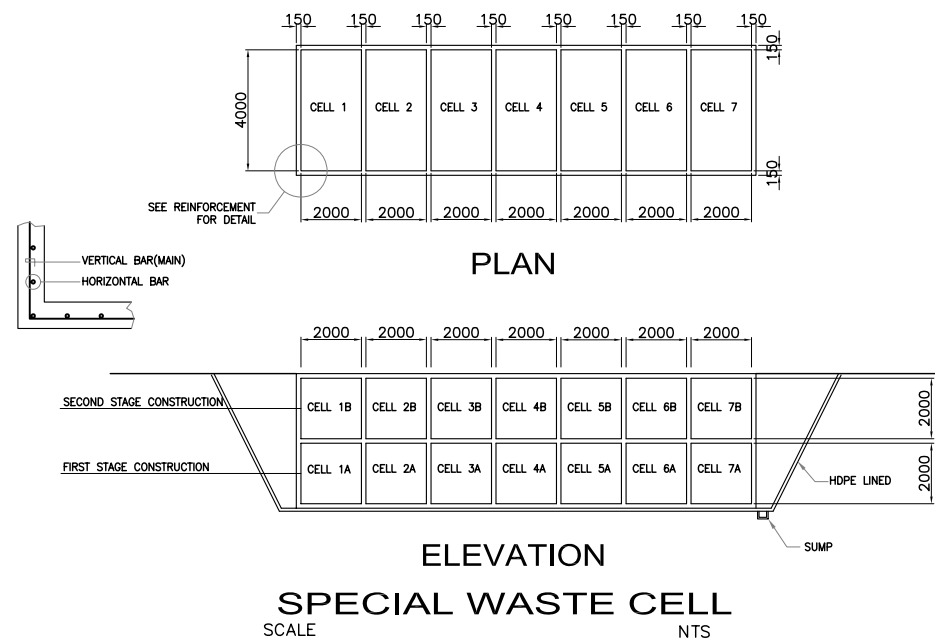
**GAS VENT PIPE**  
SCALE 1 : 10 M



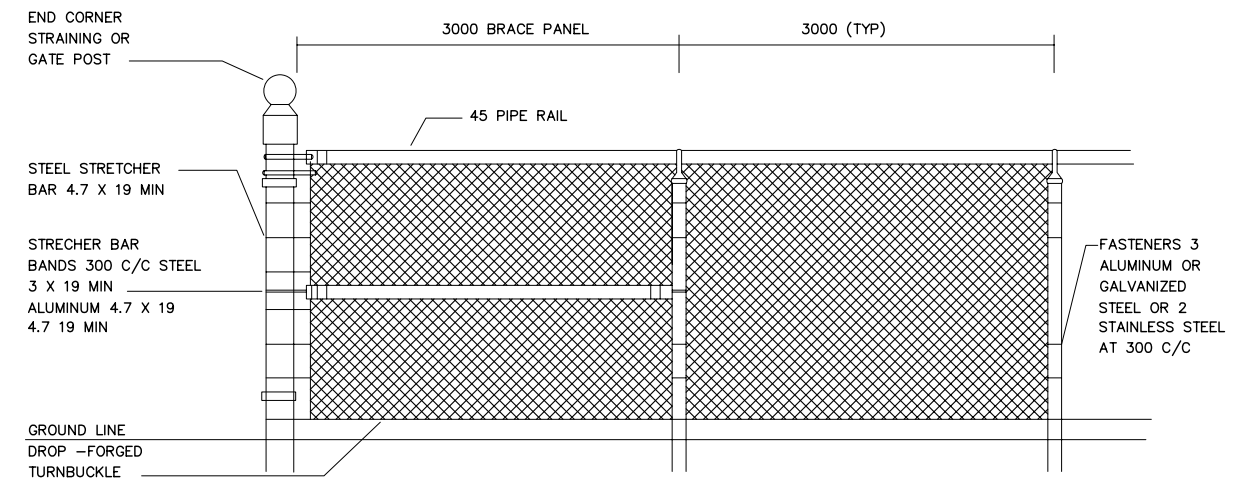
**TYPICAL PASSIVE GAS VENT**  
SCALE 1 : 80 M




**DETAIL : DOUBLE GATE**  
SCALE 1 : 30 M



**SPECIAL WASTE CELL**  
SCALE NTS



**DETAIL : CHAIN LINK FENCE**  
SCALE 1 : 30 M

PROJECT TITLE:	CLIENT:	CONSULTANT:	DRAWING TITLE:	DESIGNED BY:	DRAWING CONTENT:	DRWG. NO.
THE MASTER PLAN ON SOLID WASTE MANAGEMENT FOR BORACAY ISLAND AND MALAY MUNICIPALITY	JAPAN INTERNATIONAL COOPERATION AGENCY	 <b>NIPPON KOEI CO., LTD.</b> 2, Kojimachi 4-chome, Chiyoda-ku Tokyo 102-0083 JAPAN Phone : +81-3-5276-3930 Fax : +81-3-5276-2656 E-mail : int.e@nkk.co.jp http://www.nkk.co.jp	DEVELOPMENT OF NEW LANDFILL SITE IN MALAY MUNICIPALITY	DRAWN BY: CHECKED BY: APPROVED BY: DATE: January 2008	DETAILS OF OTHER SUPPORT INFRASTRUCTURE (GAS VENTS AND FENCE)	<b>K-21</b> SET NO. 21 OF 21